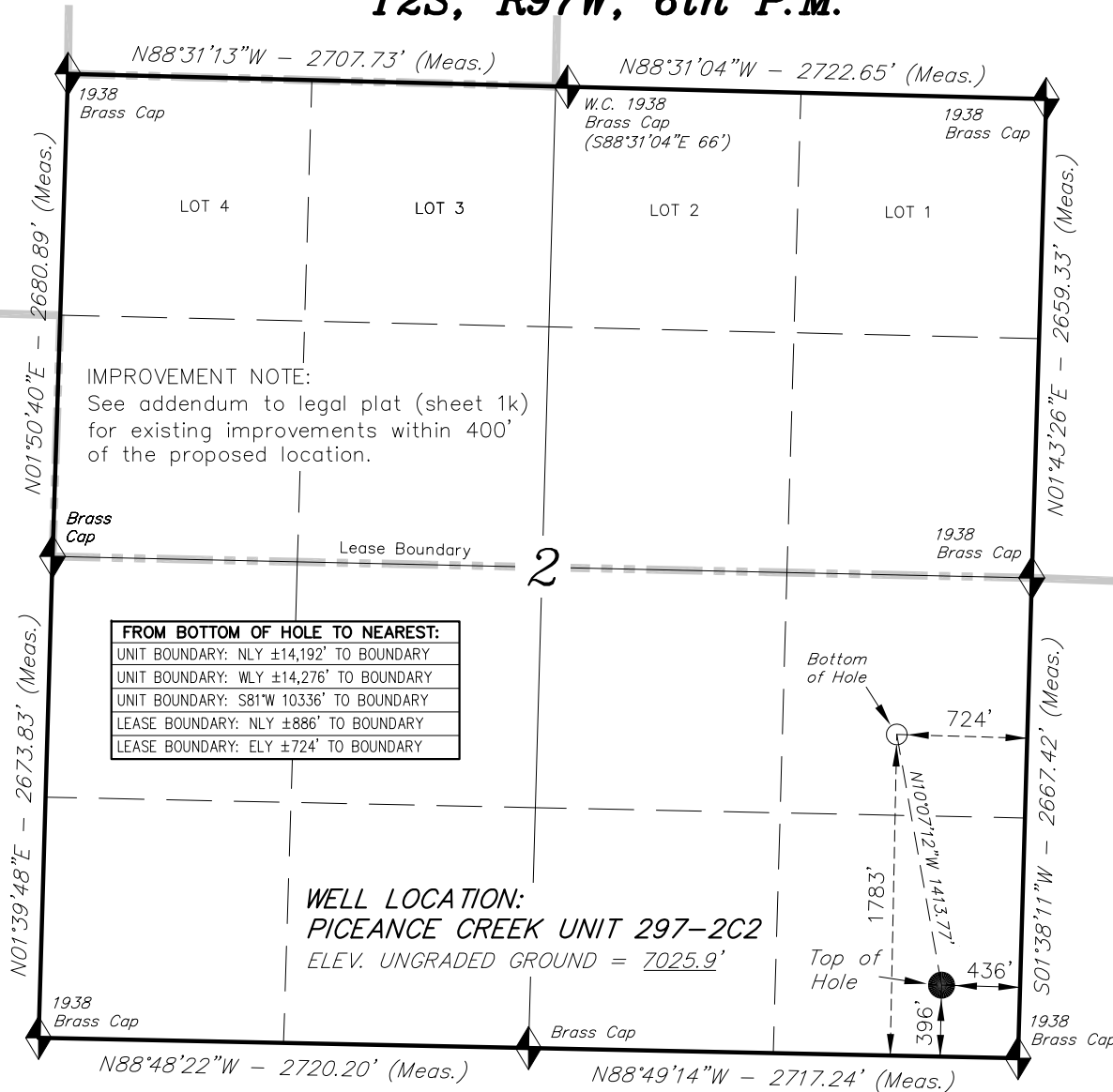


T2S, R97W, 6th P.M.



ExxonMobil Oil Corporation

WELL LOCATION, PICEANCE CREEK UNIT 297-2C2,
LOCATED AS SHOWN IN THE SE 1/4 SE 1/4 OF
SECTION 2, T2S, R97W, 6th P.M., RIO BLANCO
COUNTY, COLORADO.



◆ = SECTION CORNERS LOCATED

BASIS OF BEARINGS & BASIS OF ELEVATION

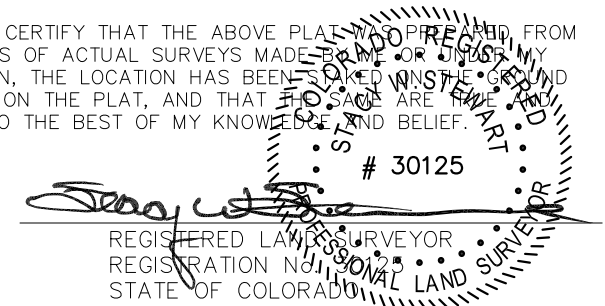
BASIS OF BEARINGS IS A LINE BETWEEN MAGNOLIA & MEYERS TRIANGULATION STATION GRID COORDINATES WHICH IS ASSUMED TO BEAR S82°36'07"E.

BASIS OF ELEVATIONS IS MAGNOLIA TRIANGULATION STATION LOCATED IN THE NW 1/4 OF SECTION 9, T2S, R96W, 6th P.M. REPORTED FROM THE NATIONAL GEODETIC SURVEY AS BEING 7529 FEET (NAVD 88). WE MEASURED IT TO BE 7526.2'

NOTES:

1. Well footages are measured at right angles to the Section Lines.
2. Bearings are based on Global Positioning Satellite observations.
3. G.P.S. Operator: S. VERNON, (PDOP) = 1.8

THIS IS TO CERTIFY THAT THE ABOVE PLAT WAS PREPARED FROM FIELD NOTES OF ACTUAL SURVEYS MADE BY ME OR UNDER MY SUPERVISION, THE LOCATION HAS BEEN SPOKE TO THE GROUND AS SHOWN ON THE PLAT, AND THAT THE SAME ARE TRUE AND CORRECT TO THE BEST OF MY KNOWLEDGE AND BELIEF.



CO-NORTH NAD 83 (SURFACE LOCATION)	CO-NORTH NAD 83 (BOTTOM HOLE)	FROM SURFACE LOCATION TO NEAREST:
LATITUDE = 39°53'59.88" (39.899967)	LATITUDE = 39°54'13.55" (39.903763)	TOWN/COMMUNITY: NE 19.7 MILES TO MEEKER
LONGITUDE = 108°14'23.67" (108.239908)	LONGITUDE = 108°14'27.40" (108.240946)	UNIT BOUNDARY: NLY ±15,577' TO BOUNDARY
STATE PLANE COORDINATES	STATE PLANE COORDINATES	UNIT BOUNDARY: WLY ±14,551' TO BOUNDARY
N: = 1218282.737 E: = 2231401.437	N: = 1219674.019 E: = 2231153.111	UNIT BOUNDARY: S89°W 10,469' TO BOUNDARY
CO-NORTH NAD 27 (SURFACE LOCATION)	CO-NORTH NAD 27 (BOTTOM HOLE)	LEASE BOUNDARY: NLY ±2,272' TO BOUNDARY
LATITUDE = 39°53'59.98" (39.899995)	LATITUDE = 39°54'13.65" (39.903791)	LEASE BOUNDARY: ELY ±4,524' TO BOUNDARY
LONGITUDE = 108°14'21.36" (108.239267)	LONGITUDE = 108°14'25.10" (108.240305)	LEASE BOUNDARY: N27°E 1,037' TO BOUNDARY
STATE PLANE COORDINATES	STATE PLANE COORDINATES	EXISTING WELL: SWLY ±1,765' TO PCU T62X-11G9
N: = 218283.728 E: = 1231561.329	N: = 219675.000 E: = 1231313.000	

TRI STATE LAND SURVEYING & CONSULTING

180 NORTH VERNAL AVE. — VERNAL, UTAH 84078
(435) 781-2501

DATE SURVEYED: 07-12-10	SURVEYED BY: S.V.	SHEET 1b
DATE DRAWN: 07-12-10	DRAWN BY: R.V.C.	
REVISED:	SCALE: 1" = 1000'	