

Run 4

Date Created: 17-FEB-2010 8:19:35

Logging Cable

Type:	7-39P LXS
Serial Number:	
Length:	13115 FT
Conveyance Method:	Wireline
Rig Type:	LAND

Log Sequence:	First Log In the Well
Rig Up Length At Surface:	0.00 FT
Rig Up Length At Bottom:	0.00 FT
Rig Up Length Correction:	0.00 FT
Stretch Correction:	3.50 FT
Tool Zero Check At Surface:	

- 1.
- 2.
- 3.
- 4.
- 5.
- 6.

THE USE OF AND RELIANCE UPON THIS RECORDED-DATA BY THE HEREIN NAMED COMPANY (AND ANY OF ITS AFFILIATES, PARTNERS, REPRESENTATIVES, AGENTS, CONSULTANTS AND EMPLOYEES) IS SUBJECT TO THE TERMS AND CONDITIONS AGREED UPON BETWEEN SCHLUMBERGER AND THE COMPANY, INCLUDING: (a) RESTRICTIONS ON USE OF THE RECORDED-DATA; (b) DISCLAIMERS AND WAIVERS OF WARRANTIES AND REPRESENTATIONS REGARDING COMPANY'S USE OF AND RELIANCE UPON THE RECORDED-DATA; AND (c) CUSTOMER'S FULL AND SOLE RESPONSIBILITY FOR ANY INFERENCE DRAWN OR DECISION MADE IN CONNECTION WITH THE USE OF THIS RECORDED-DATA.

OTHER SERVICES2
OS1:
OS2:
OS3:
OS4:
OS5:

REMARKS: RUN NUMBER 2

ed wells.

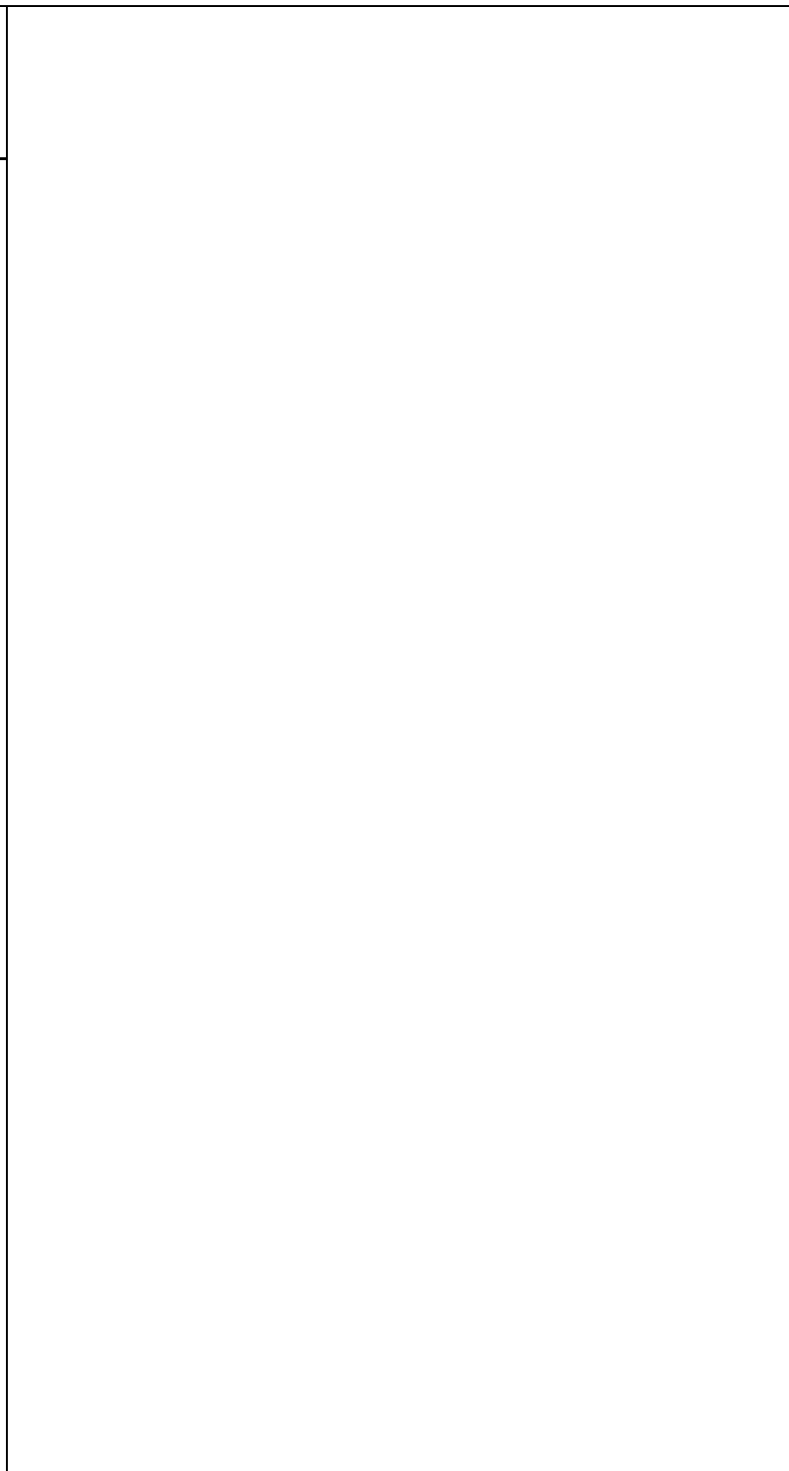
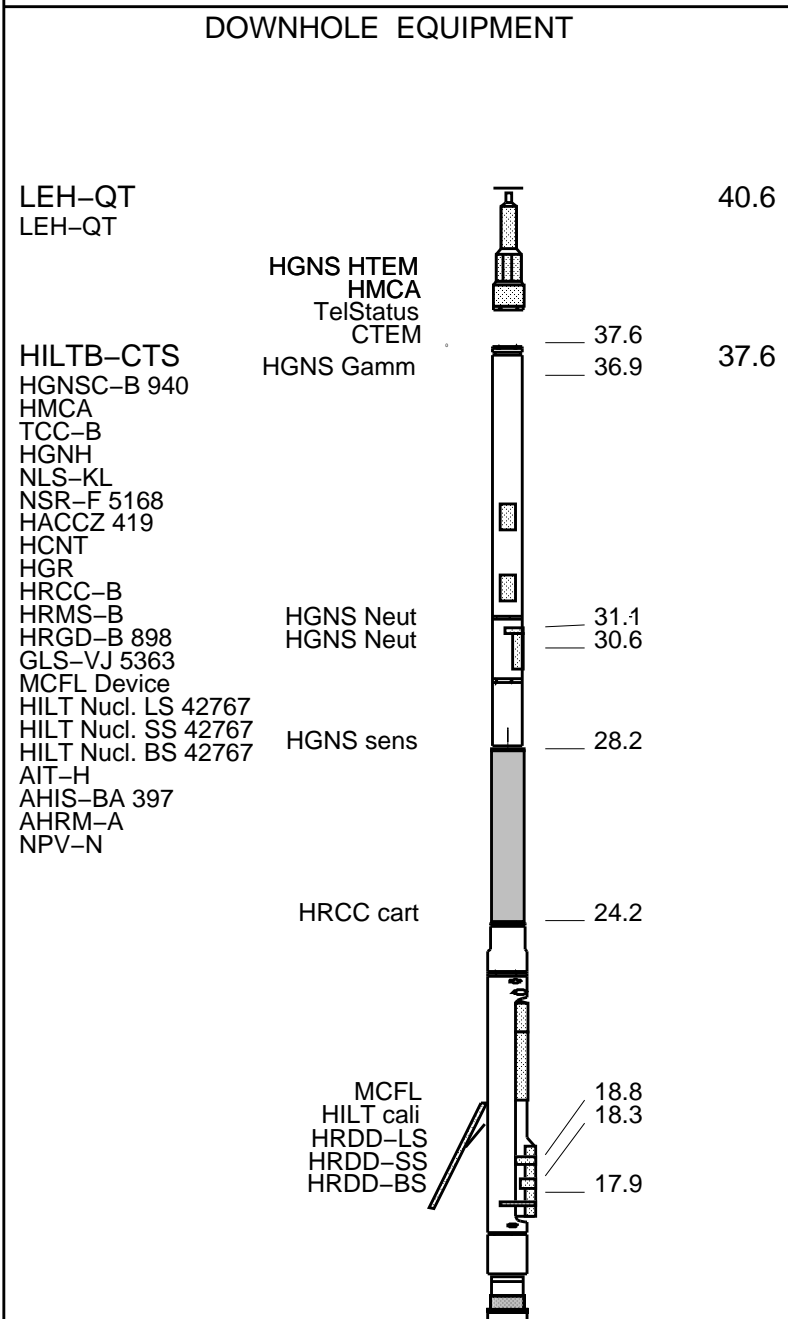
Rig: Xtreme 12	
Crew: Mark Hoffman and Shane Walker	

RUN 1			RUN 2		
SERVICE ORDER #:			SERVICE ORDER #:		
PROGRAM VERSION:			PROGRAM VERSION:		
FLUID LEVEL:			FLUID LEVEL:		
LOGGED INTERVAL	START	STOP	LOGGED INTERVAL	START	STOP

EQUIPMENT DESCRIPTION					
RUN 1			RUN 2		

SURFACE EQUIPMENT

WITM (CTS)-A NCS-VB
GSR-U/Y
NCT-B
CNB-AB



Induction
Temperatu
Power Sup

7.9

SP SENSOR
HTEN HMAS
Accelerom HV
Mud Resis
Tension

0.1

0.0

TOOL ZERO

MAXIMUM STRING DIAMETER 4.63 IN
MEASUREMENTS RELATIVE TO TOOL ZERO
ALL LENGTHS IN FEET

Production String

(in)

(ft)

OD

ID

MD

Well Schematic

(ft)

(in)

MD

OD

ID

Casing String

Casing String

Casing Shoe
Borehole Segment

0.0

8.625

609.0

8.625

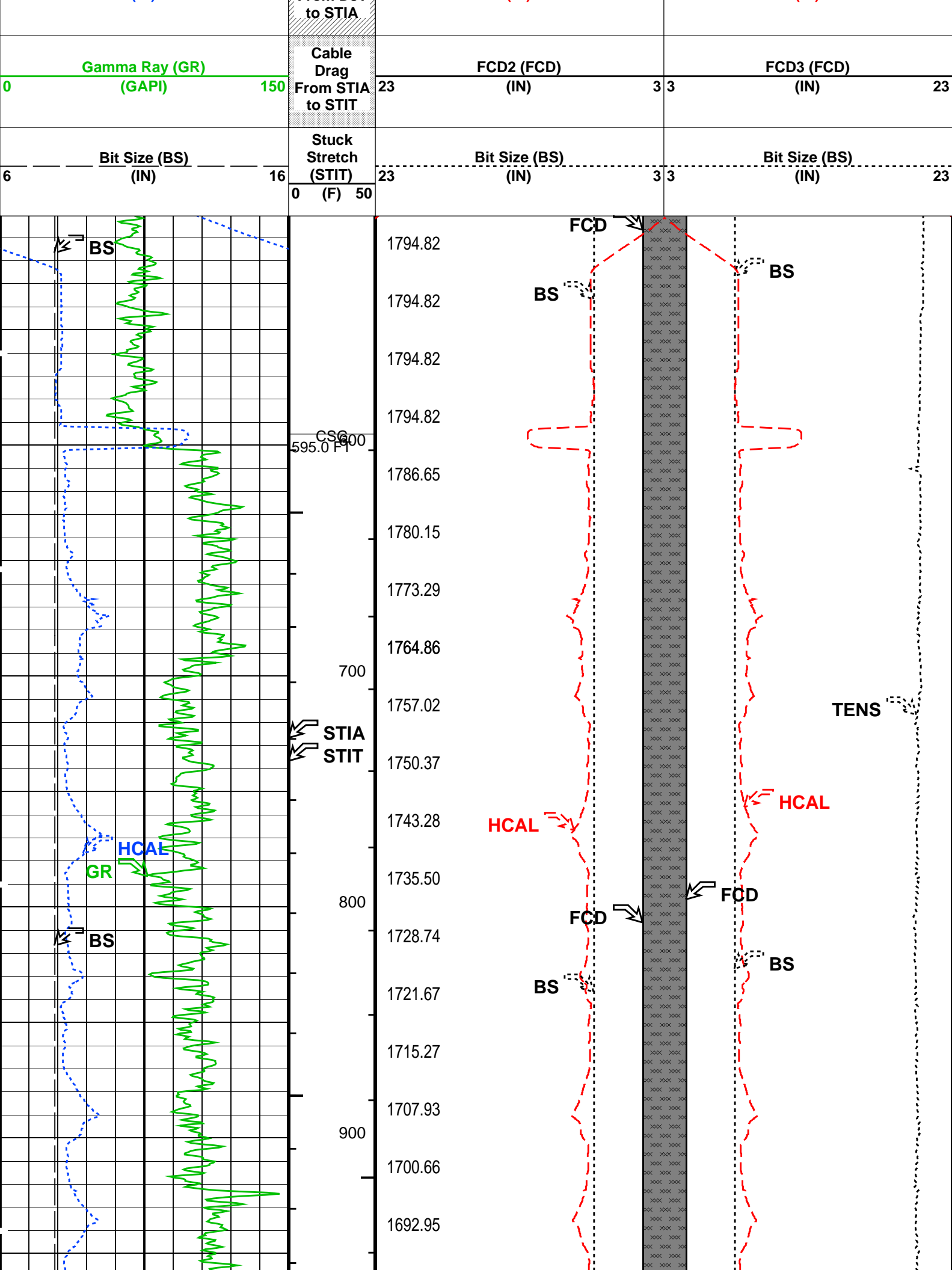
609.0

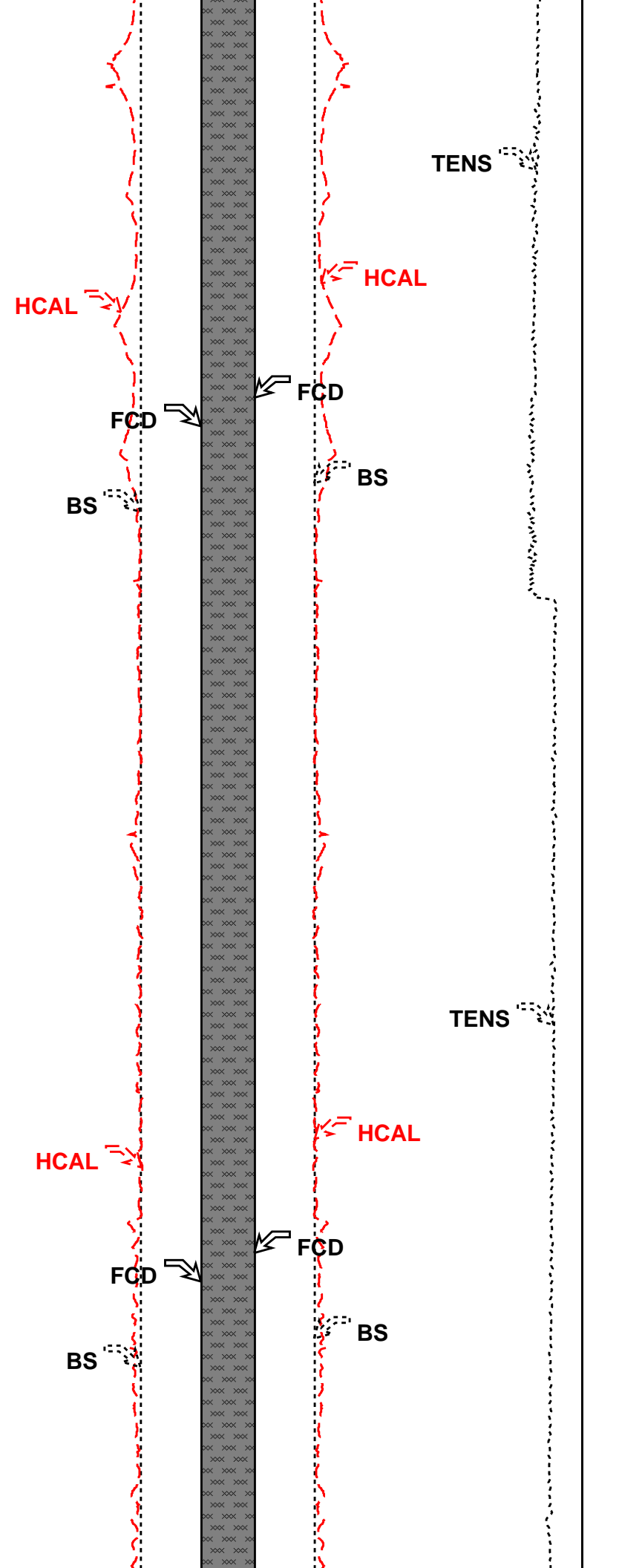
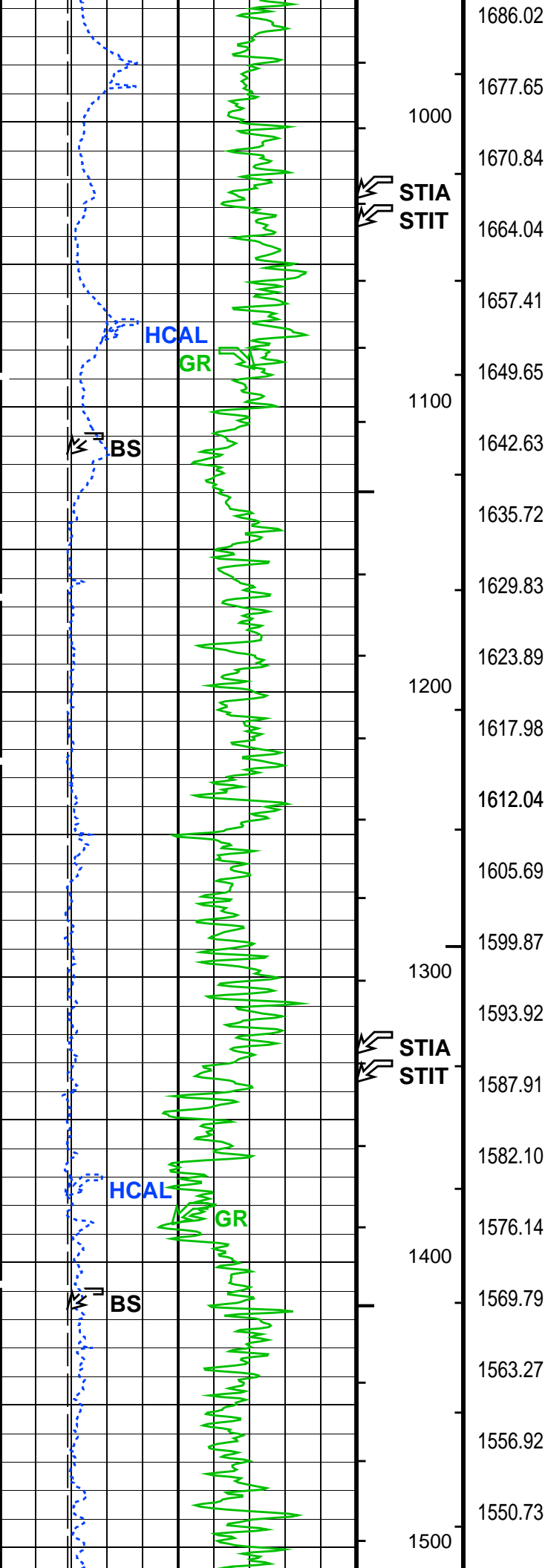
7.875

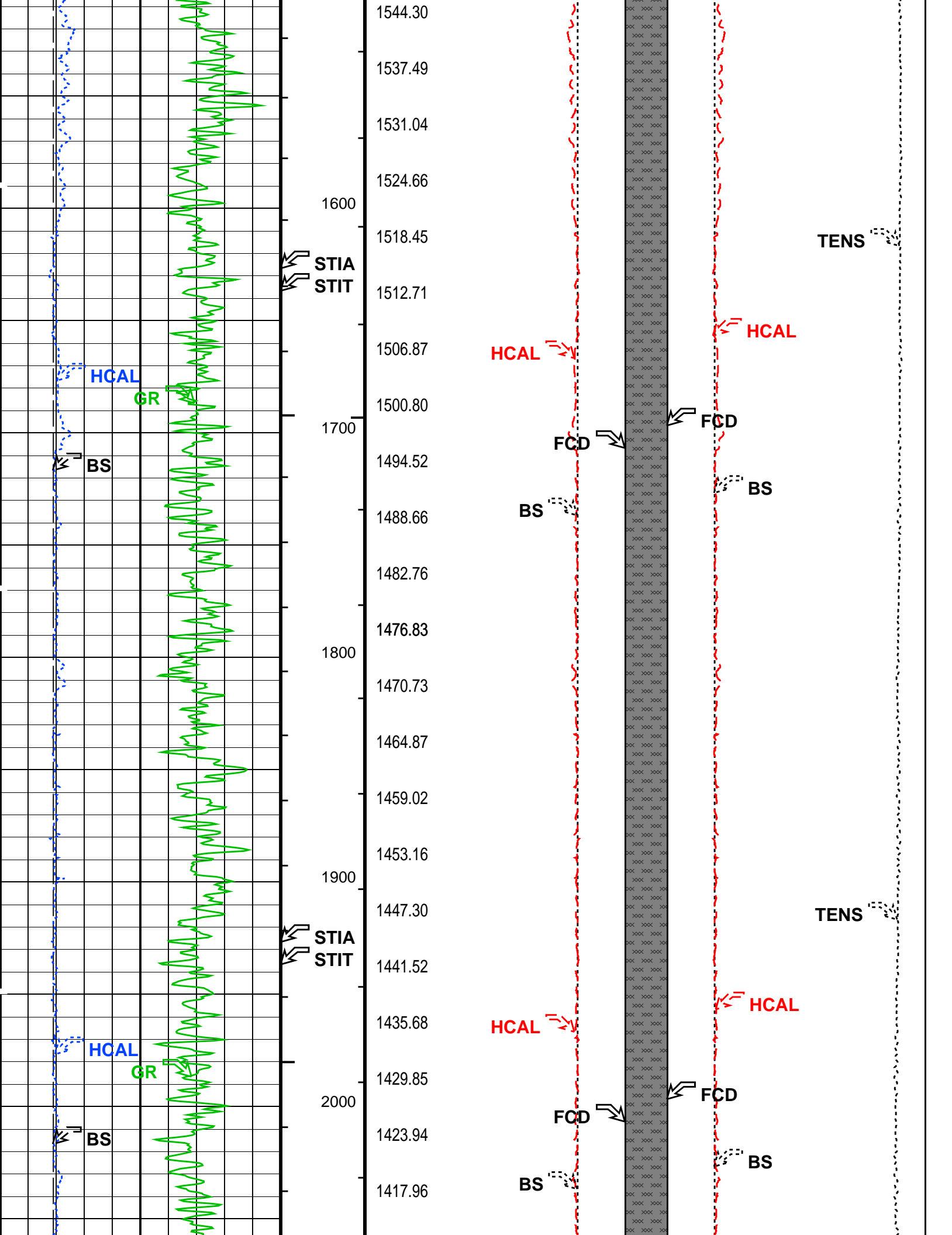
--	--	--	--	--	--	--	--

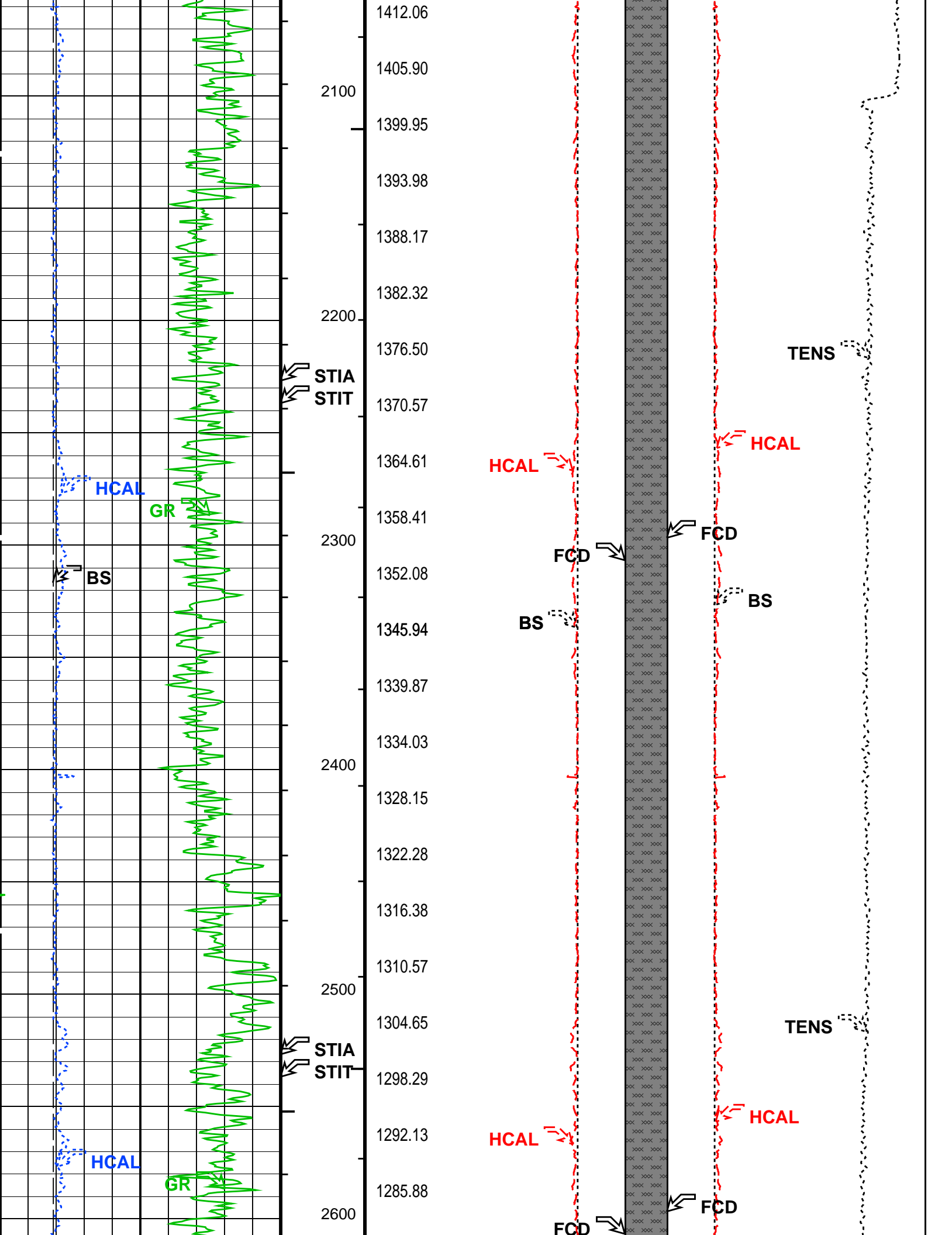
All depths are driller's depths

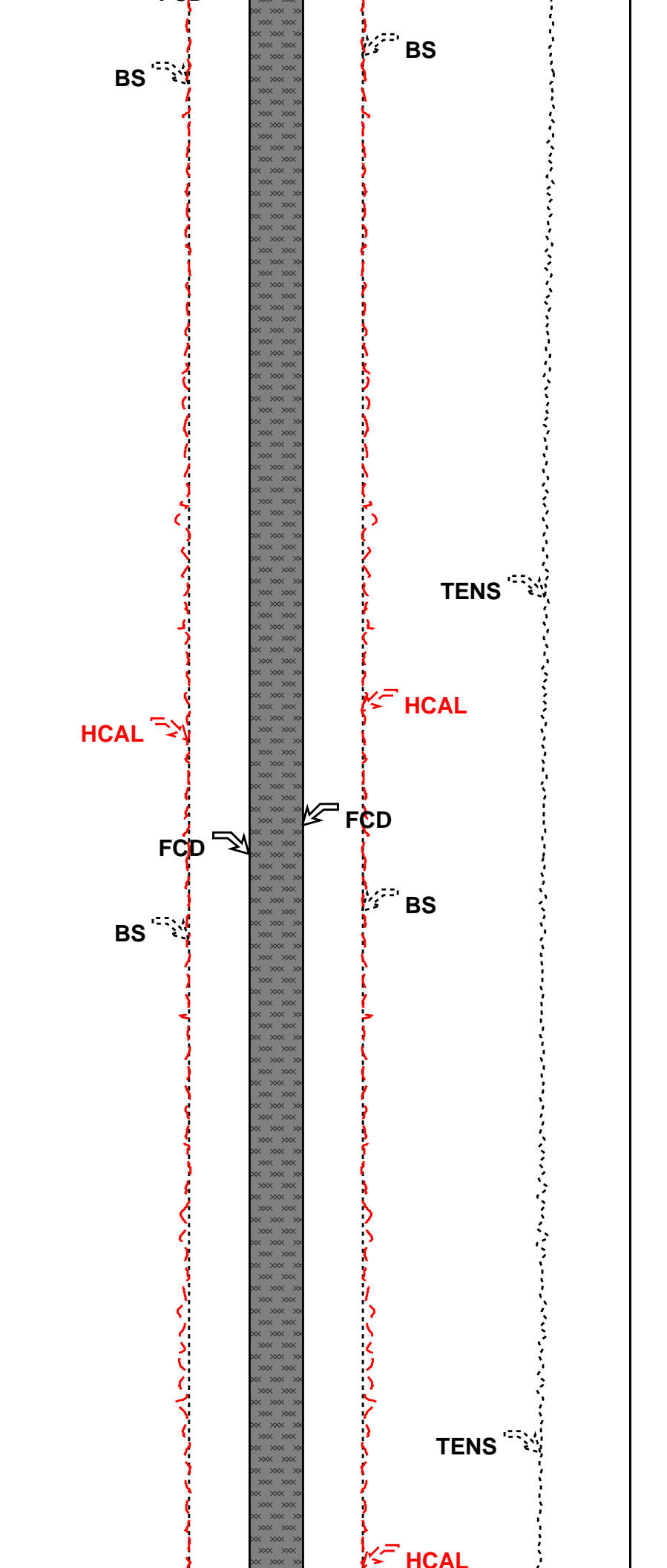
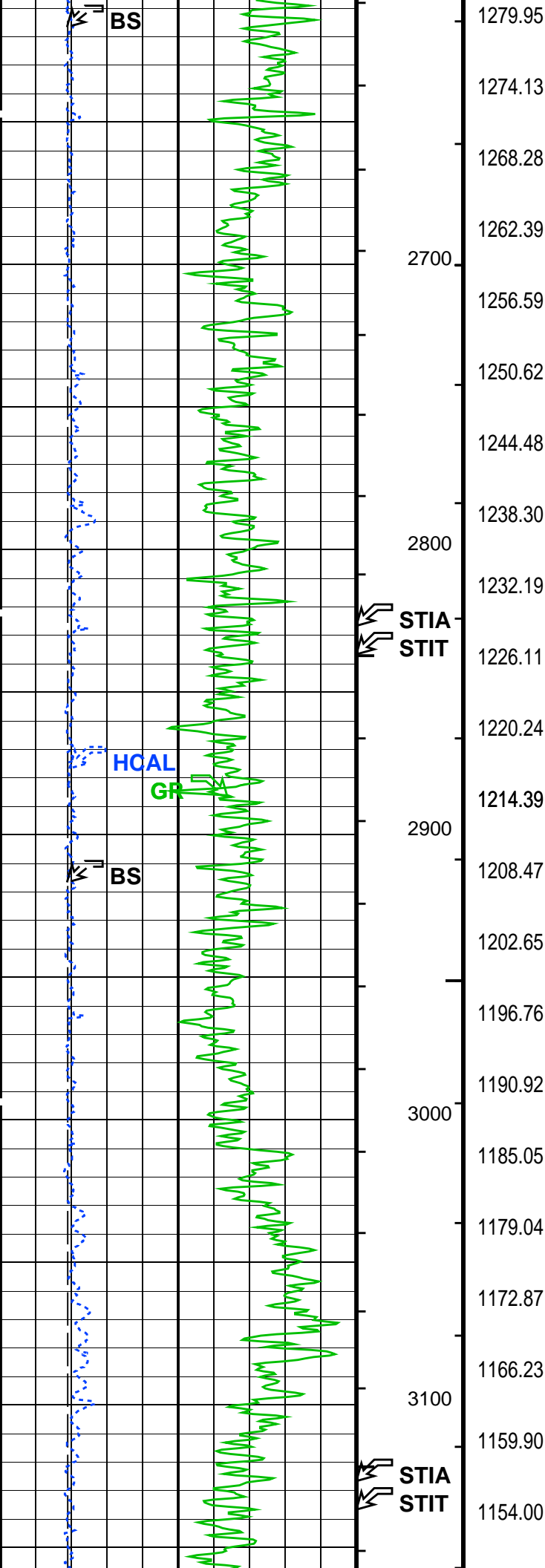
Output DLIS Files						
DEFAULT	AIT_TLD_MCFL_CNL_006LUP	FN:5	PRODUCER	17-Feb-2010 08:13	8040.0 FT	500.2 FT
Integrated Hole/Cement Volume Summary						
Hole Volume = 2615.69 F3						
Cement Volume = 1794.82 F3 (assuming 4.50 IN casing O.D.)						
Computed from 8027.0 FT to 595.0 FT using data channel(s) HCAL						
OP System Version: 17C0-154						
HILTB-CTS	17C0-154					
PIP SUMMARY						
└ Integrated Hole Volume Minor Pip Every 10 F3						
└ Integrated Hole Volume Major Pip Every 100 F3						
└ Integrated Cement Volume Minor Pip Every 10 F3						
└ Integrated Cement Volume Major Pip Every 100 F3						
Time Mark Every 60 S						
		FCD2 – FCD3 From FCD2 to FCD3				
		Cement Volume (ICV) (F3)		Tension (TENS) 6000 (LBF) 0		
HILT Caliper (HCAL) (IN)		Tool/Tot. Drag From D3T	HILT Caliper (HCAL) (IN)		HILT Caliper (HCAL) (IN)	
6	16	23	3	3	23	23

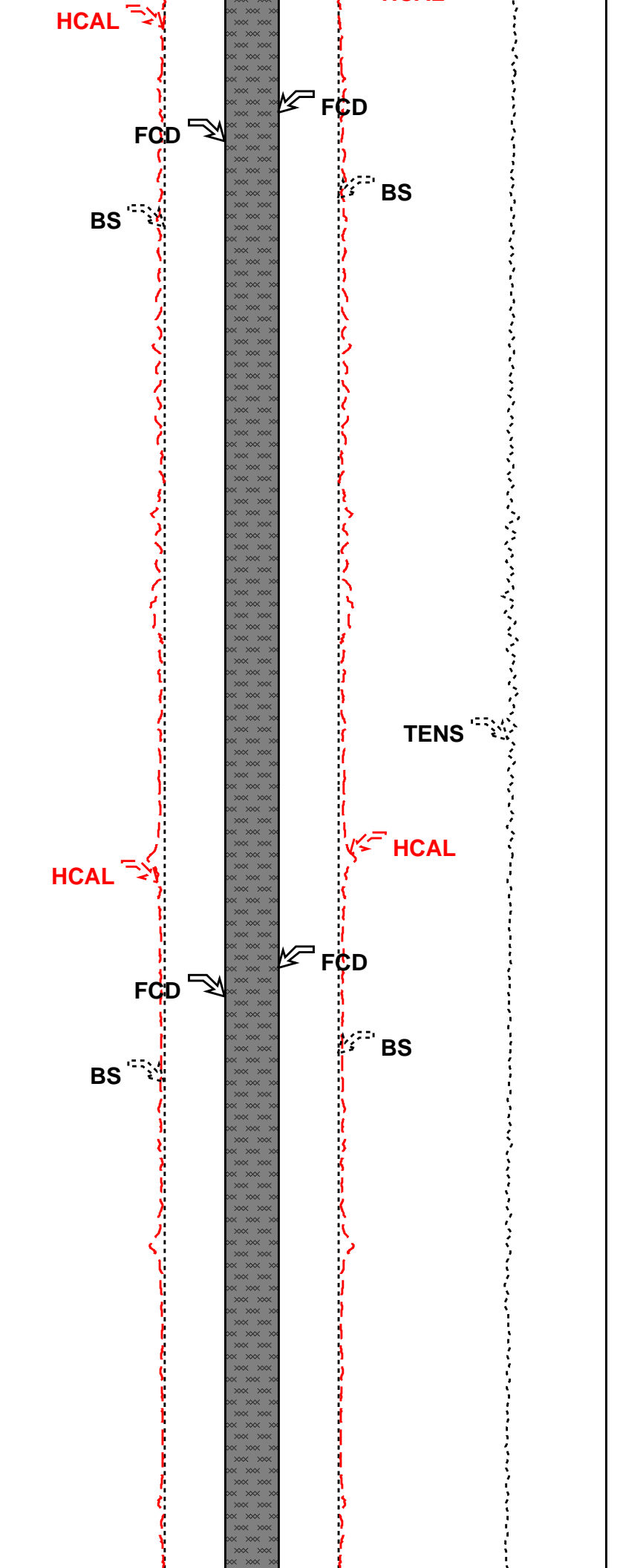
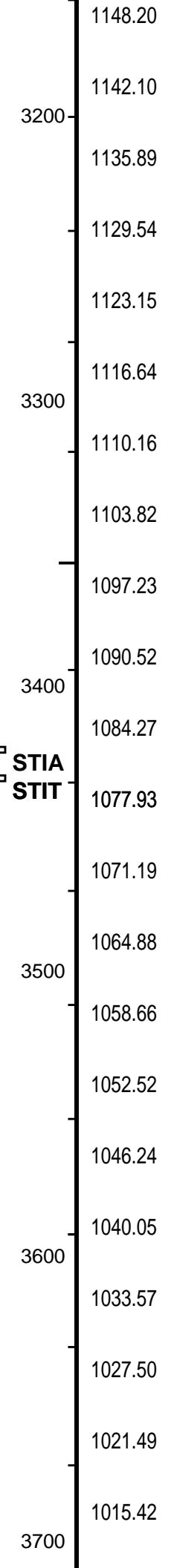
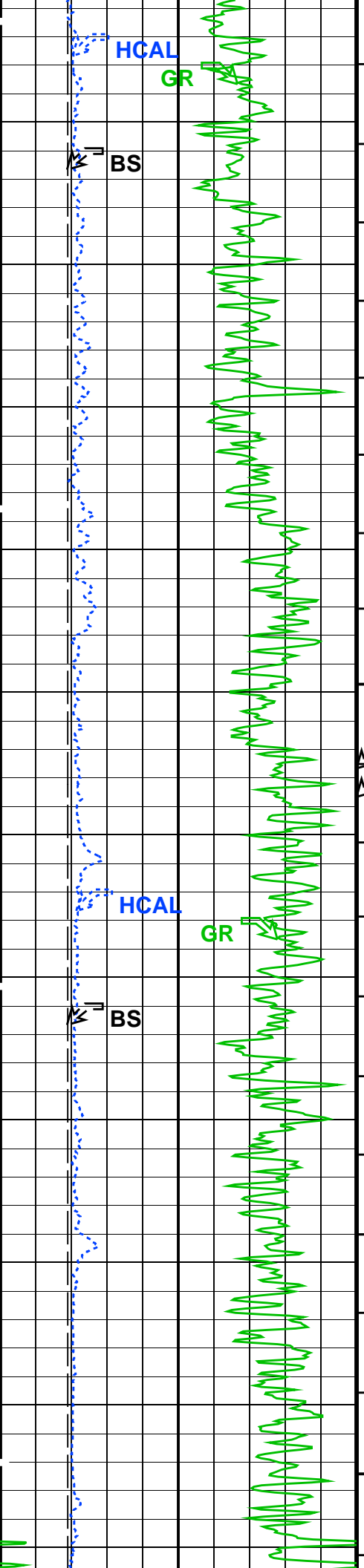


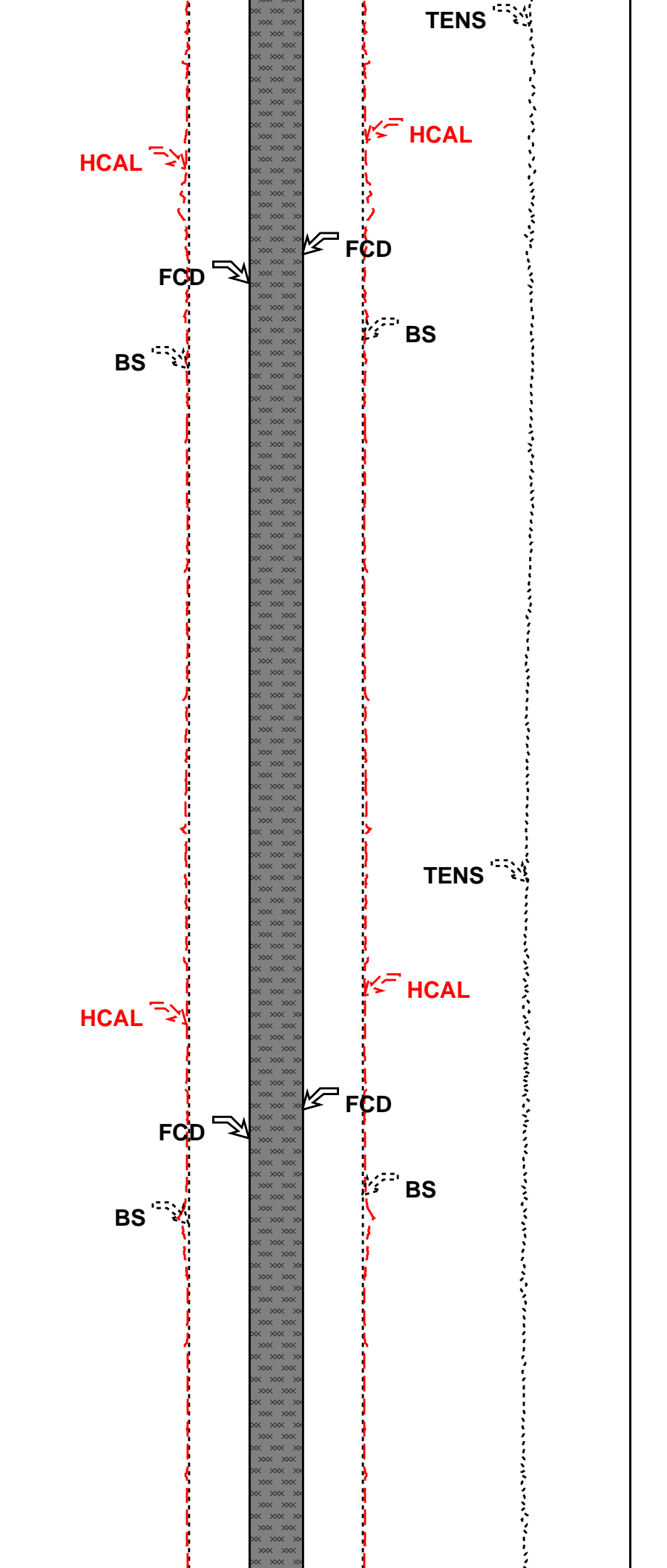
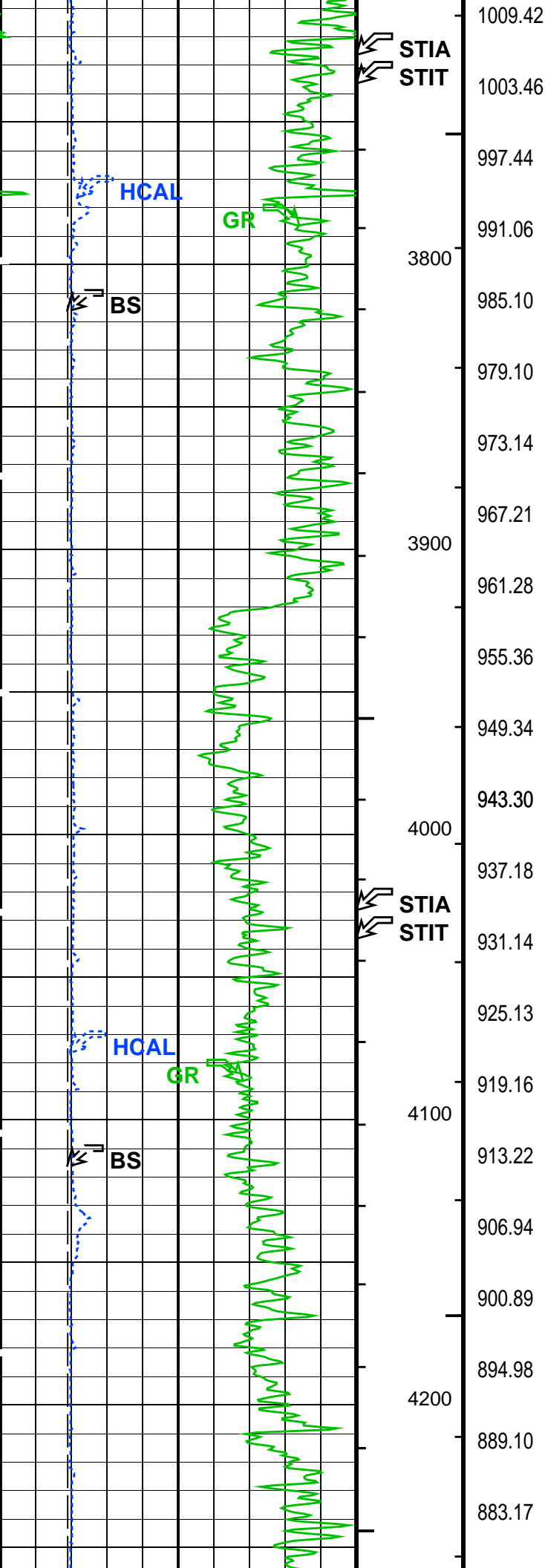


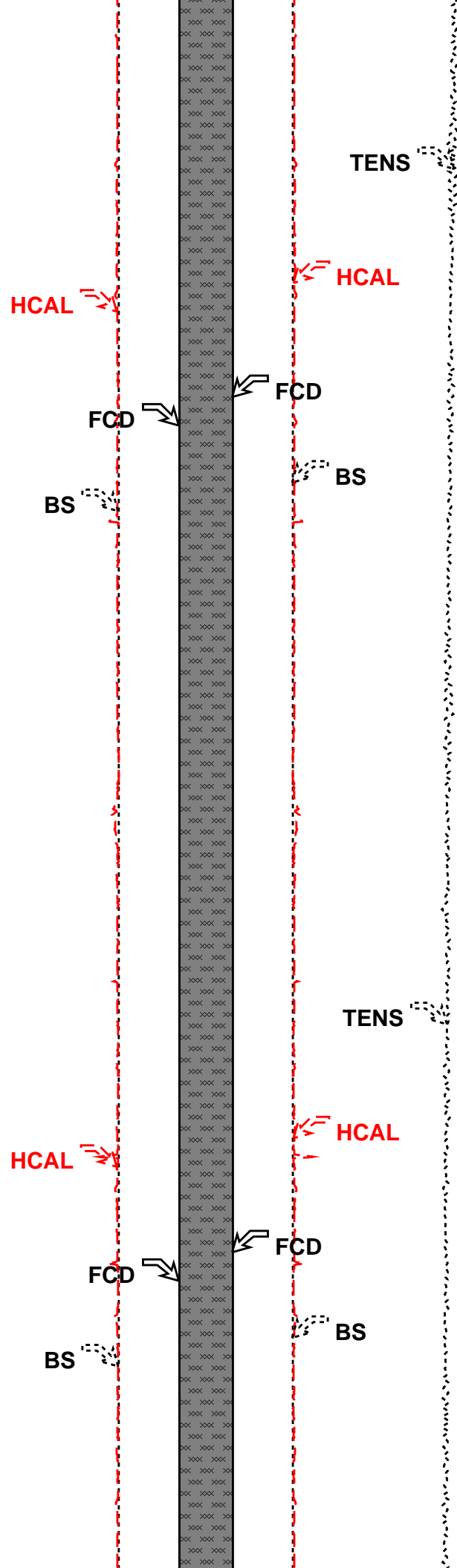
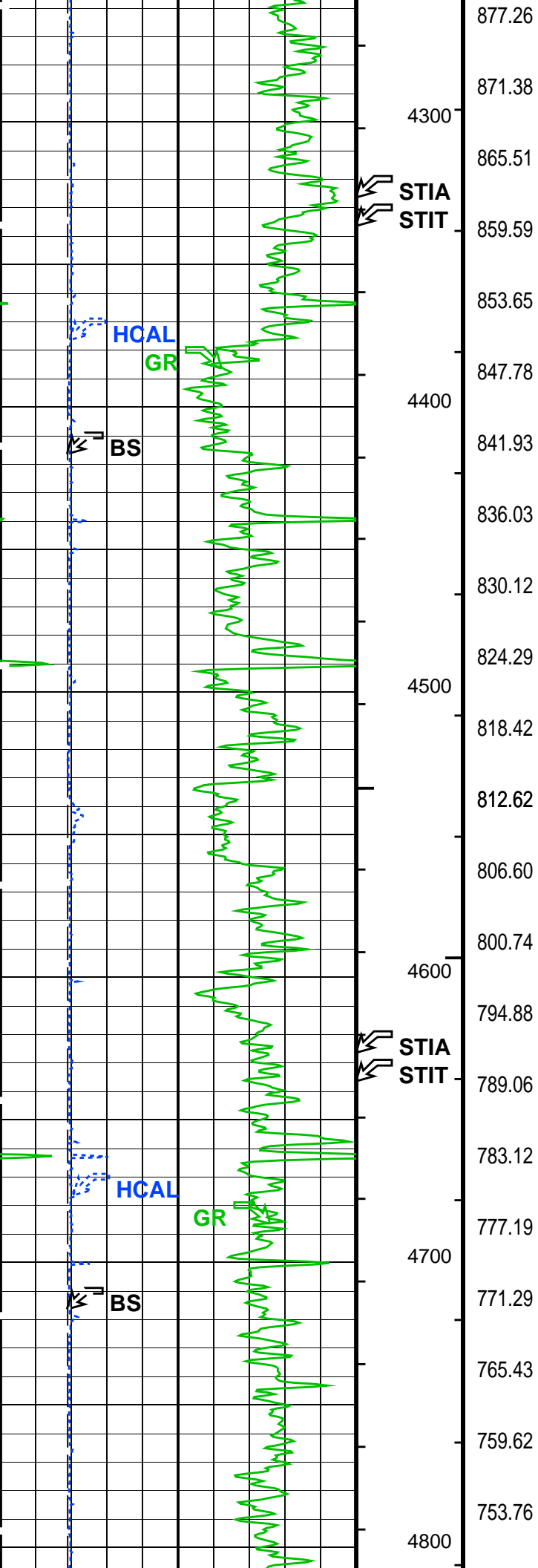


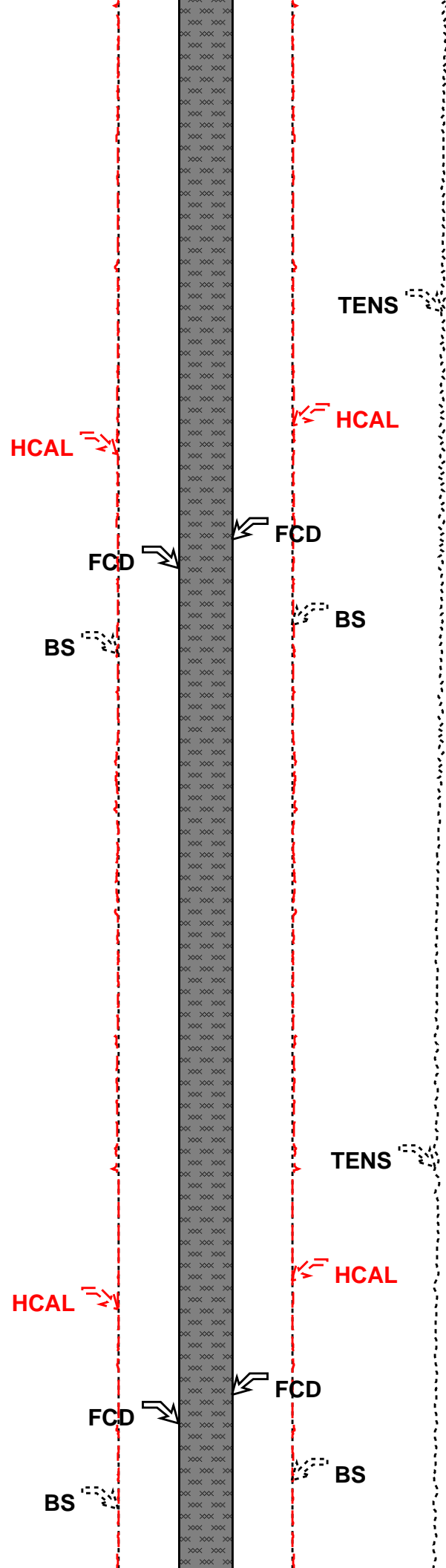
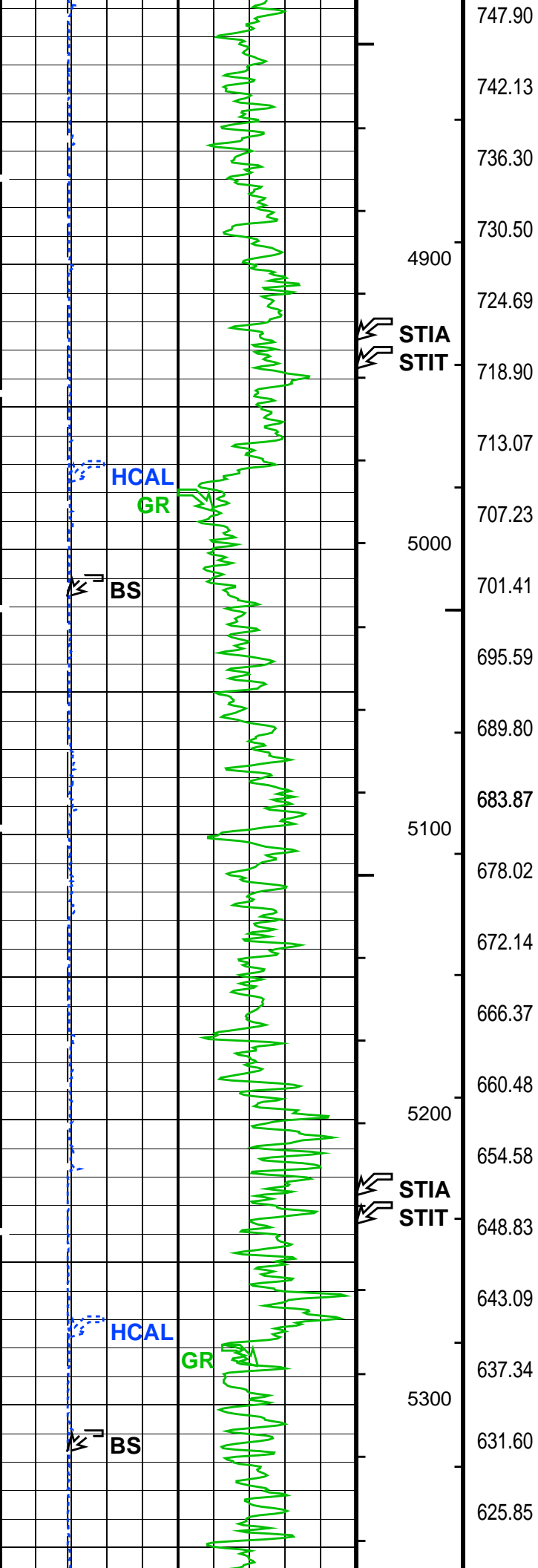


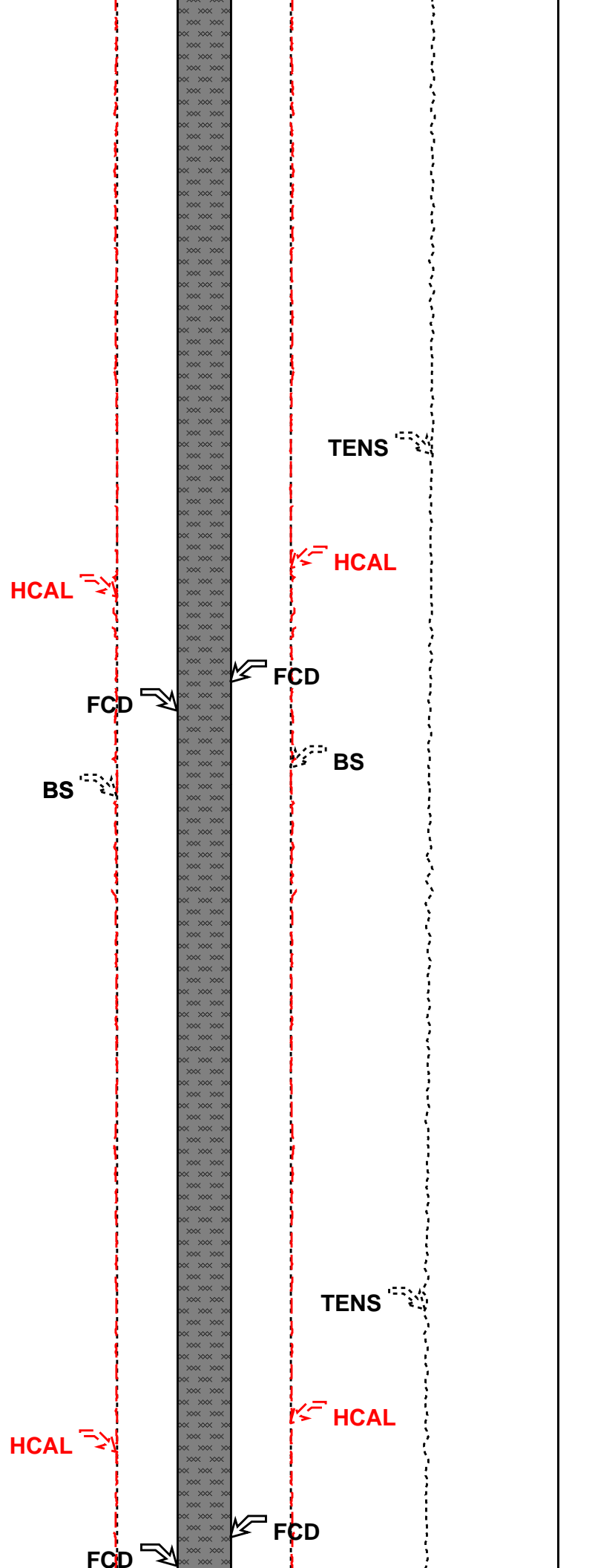
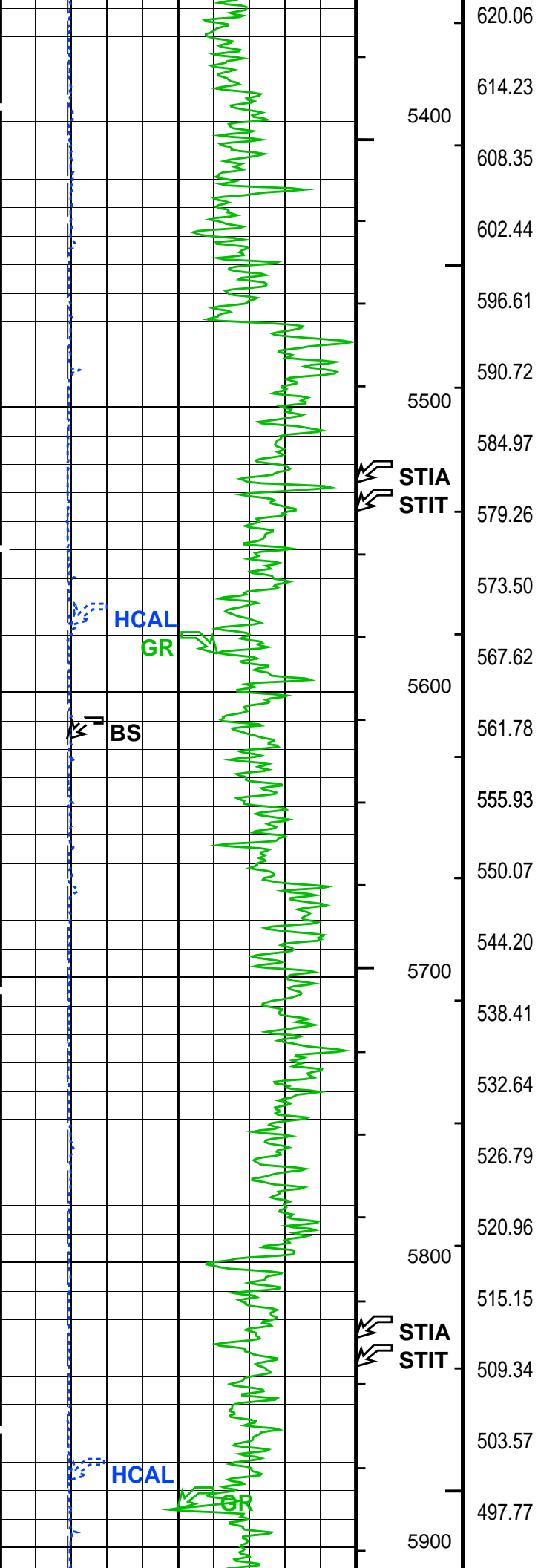


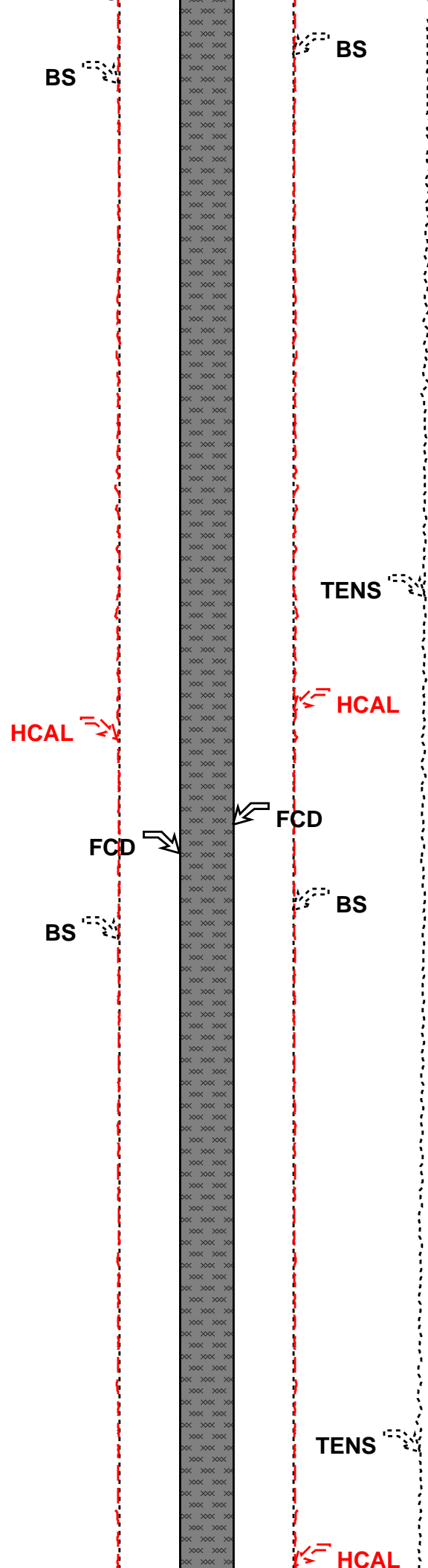
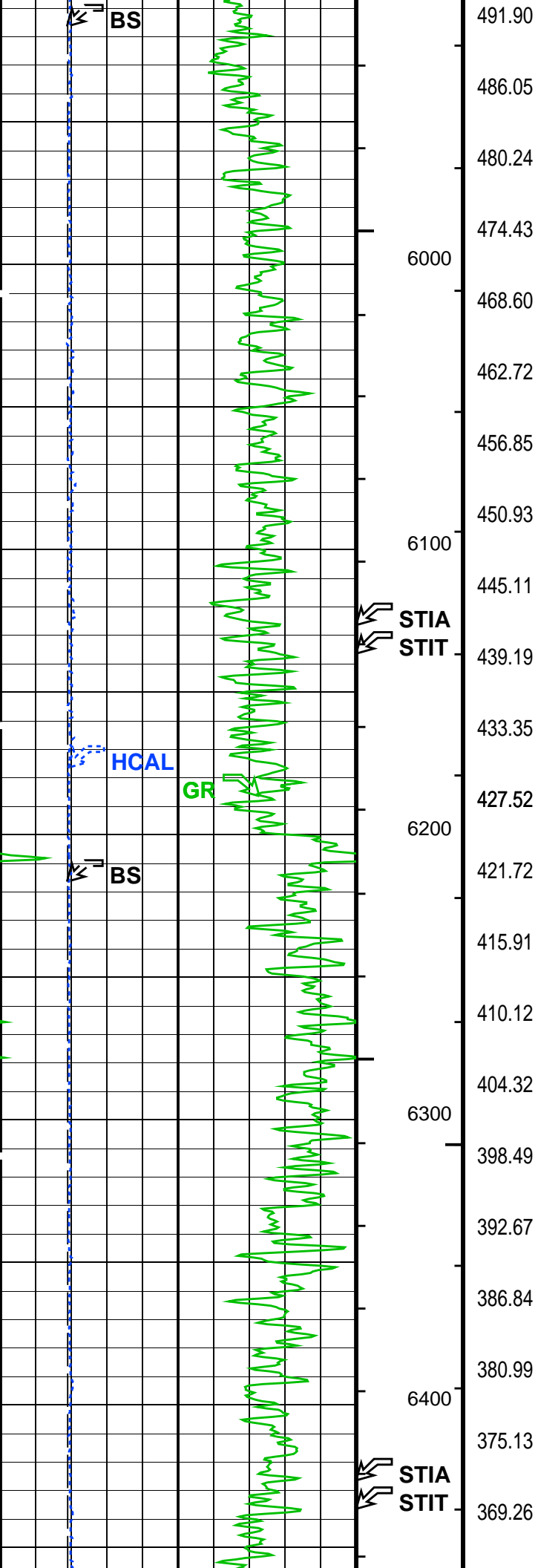


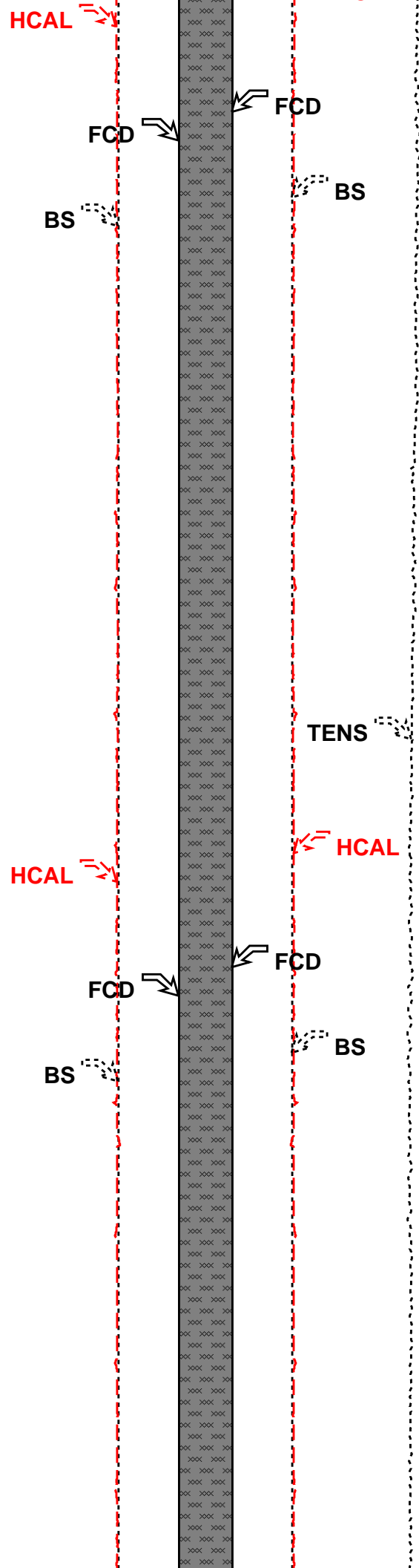
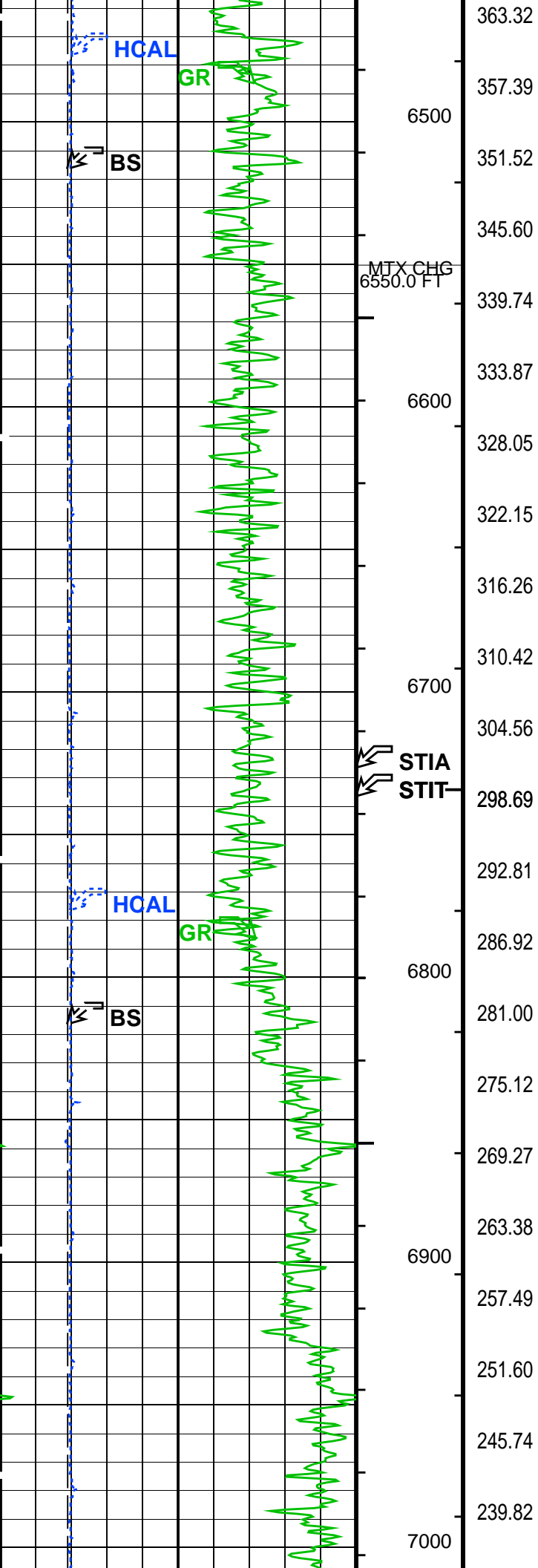


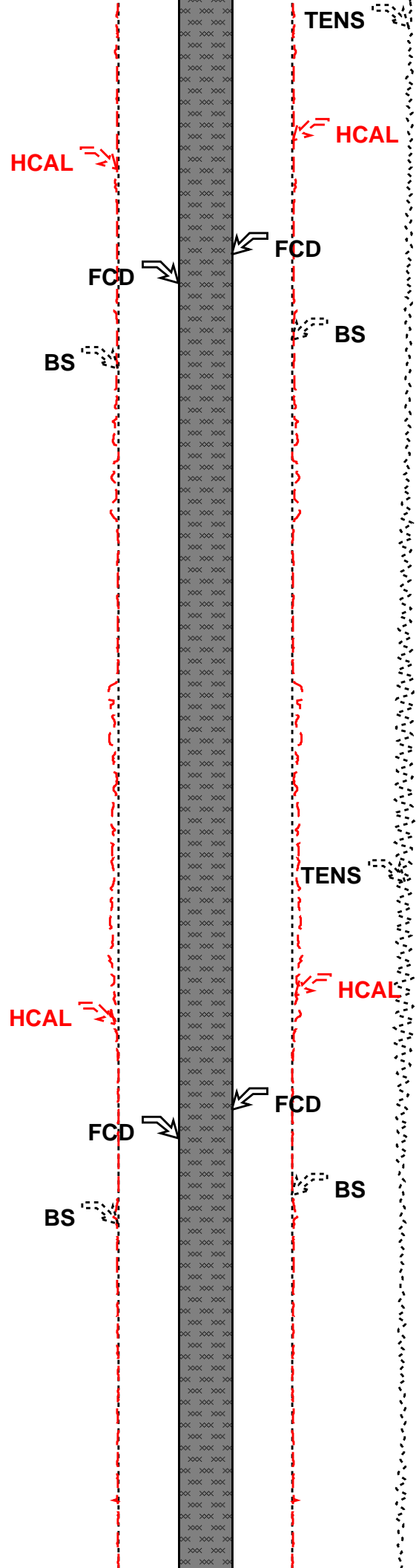
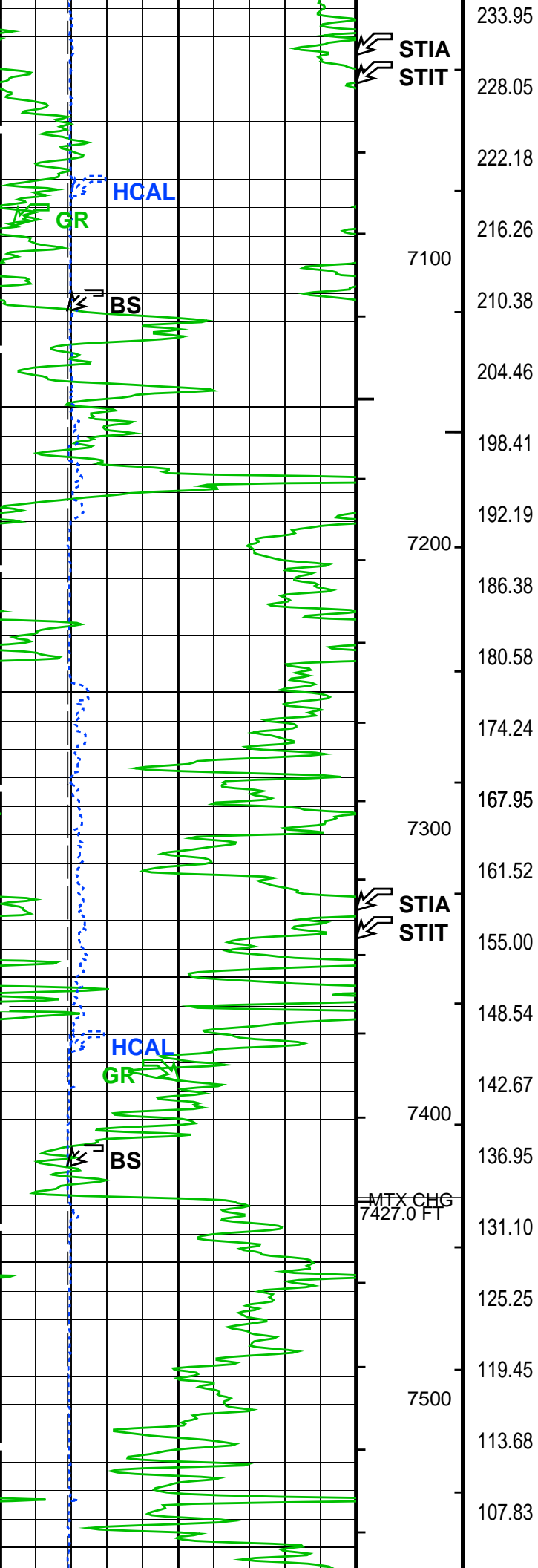


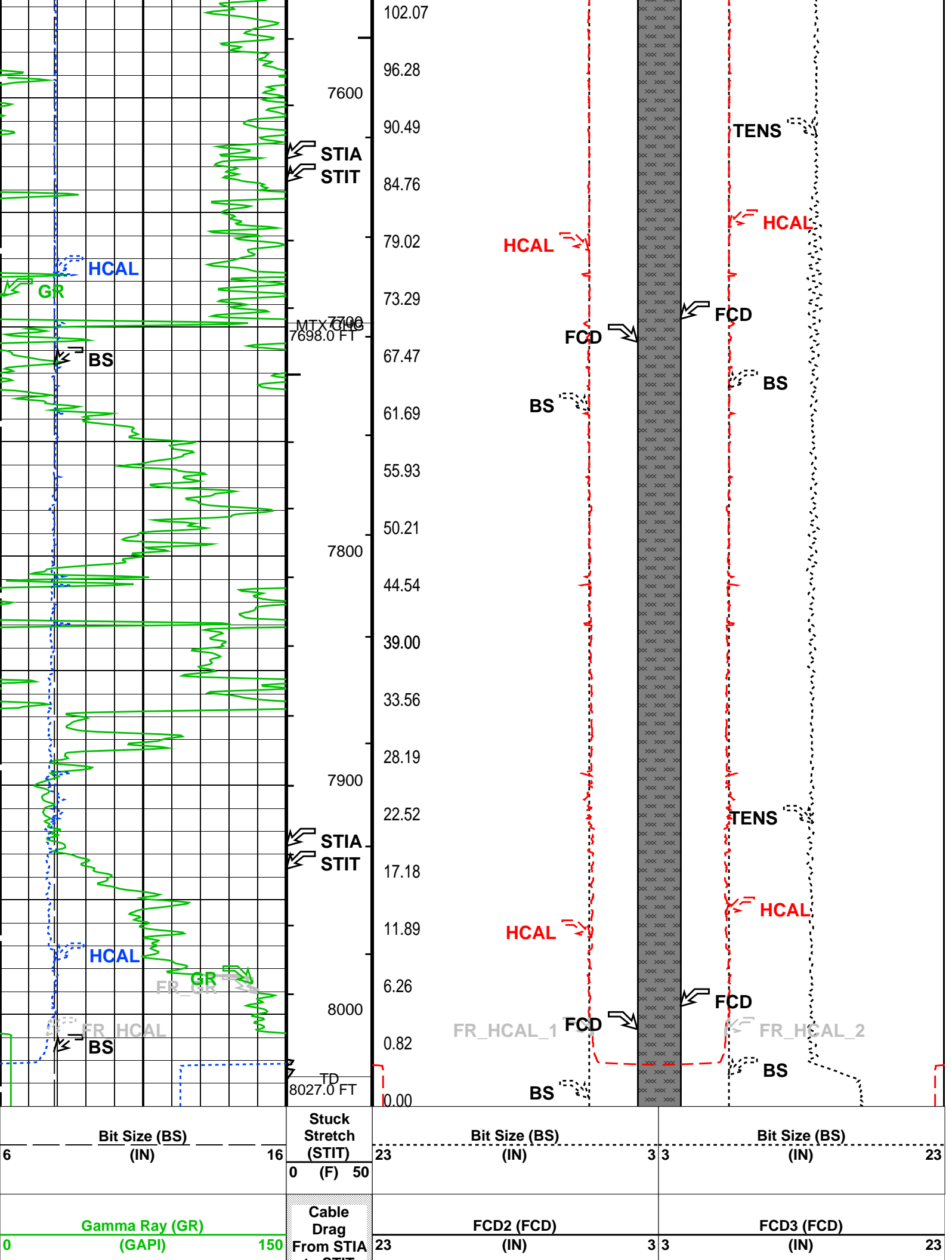












PIP SUMMARY

- └ Integrated Hole Volume Minor Pip Every 10 F3
- └ Integrated Hole Volume Major Pip Every 100 F3
 - └ Integrated Cement Volume Minor Pip Every 10 F3
 - └ Integrated Cement Volume Major Pip Every 100 F3

Time Mark Every 60 S

Parameters			
DLIS Name	Description	Value	
	HOLEV: Integrated Hole/Cement Volume		
FCD	Future Casing (Outer) Diameter	4.5	IN
HVCS	Integrated Hole Volume Caliper Selection	HCAL	
	STI: Stuck Tool Indicator		
LBFR	Trigger for MAXIS First Reading Label	TDL	
STKT	STI Stuck Threshold	2.5	FT
TDD	Total Depth – Driller	8035.00	FT
TDL	Total Depth – Logger	8027.00	FT
	System and Miscellaneous		
BS	Bit Size	7.875	IN
DORL	Depth Offset for Repeat Analysis	0.0	FT
TD	Total Depth	8027	FT

OP System Version: 17C0-154

Output DLIS Files				
DEFAULT	AIT_TLD_MCFL_CNL_006LUP	FN:5	PRODUCER	17-Feb-2010 08:13

Schlumberger

Platform Express Cement Volume