



NUETRON LOG

Baker Atlas

File No: 1752 Company: WARATHON OIL COMPANY

Well: 898-6A-43

API No: 05045183350000 Field: GRAND VALLEY

County: GARFIELD State: COLORADO

Location

SHL: 3485' PUL & 1296' PUL

SEC 5 TWP 8S RGE 98E

Other Services

3.781" GAUGE
BOND LOG

Elevations

KB 8158 ft
DF 8157 ft
GL 8137 ft

G.L. Elevation 8137 ft

K.B. 24 ft Above P. D.

KELLY BUSHING

Permanent Datum
Log Measured From
Drill Measured From

Date: 20 APR 2010

Run: ONE

Service Order: 578794

Depth Driller: 10326 ft

Depth Logger: 10306 ft

Bottom Logged Interval: 10306 ft

Top Logged Interval: 8747 ft

Time Started: 03:30

Time Finished: 06:30

Operator Rig Time: 5 hrs

Type of Fluid in Hole: WATER

Fluid Density: W/A

Salinity: W/A

Fluid Level: FULL

Logged Cement Top: W/A

Wellhead Pressure: 1000 psi

Maximum Hole Deviation: W/A

Nominal Logging Speed: 30 fpm

Maximum Recorded Temperature: 258 degF

Reference Log: NONE

Reference Log Date: W/A

Equipment No.: 4271 Location: VERNAL, UT

Recorded By: J. OSTLER

Witnessed By: MR. DOUGL EPPERSON

- FOLD HERE

In making interpretations of logs, our employees will give the customer the benefit of their best judgement. But since all interpretations are opinions based on inferences from electrical or other measurements, we cannot, and we do not guarantee the accuracy or correctness of any interpretation. We shall not be liable or responsible for any loss, cost, damages, or expenses whatsoever incurred or sustained by the customer resulting from any interpretation made by any of our employees.

Borehole Record

Bit Size	From	To
8.75 in	SURFACE	8182 ft
7.875 in	SURFACE	10326 ft

Casing Record

Size	Weight	Grade	From	To
9.625 in	36 lbm/ft	J-55	SURFACE	10326 ft
4.5 in	11.8 lbm/ft	P-110	SURFACE	10326 ft

Remarks

THIS IS THE FIRST LOG OF THE WELL.
WELL WAS LOGGED WITH 1000 PSI AT THE WELL HEAD
BHT = 258°F
SHORT JOINTS AT 8958' TO 8979' AND 8465' TO 8486'

Equipment Data

Run	Trip	Tool	Series Number	Serial Number	Position
1	1	VDL	1426XA	957	CENTRALIZED
1	1	GR/CCL/NEU	2459XA	503	CENTRALIZED

MAIN SECTION

MEASUREMENT TYPE	PARAMETER	VALUE	UNITS	TOP	BOTTOM
RAL	Amp Gate Start Far	316.900	usec	18.943	10316.500
RAL	Amp Gate Start Near	200.391	usec	18.943	10316.500
RAL	Amp Gate Start Radial	200.391	usec	18.943	10316.500
RAL	Amp Gate Width Far	25.000	usec	18.943	10316.500
RAL	Amp Gate Width Near	25.000	usec	18.943	10316.500
RAL	Amp Gate Width Radial	25.000	usec	18.943	10316.500
RAL	casing od	4.500	inches	18.943	10316.500
RAL	casing wt	11.600	lbm/ft	18.943	10316.500
RAL	FB Start Far	291.900	usec	18.943	10316.500
RAL	FB Start Near	175.391	usec	18.943	10316.500
RAL	FB Start Radial	175.391	usec	18.943	10316.500
RAL	FB Thresh Far	10.000	mv	18.943	10316.500
RAL	FB Thresh Near	4.000	mv	18.943	10316.500
RAL	FB Thresh Radial	4.000	mv	18.943	10316.500
RAL	Fluid Travel Time	200.000	usec/ft	18.943	10316.412

DEPTH OFFSETS (for Acquired Curves)

SERIES	DEPTH OFFSET	ACQUIRED CURVES					
1426XA	-15.360	ACAL	ANR	AR1	AR2	AR3	AR4
		AR5	AR6	AR7	AR8	CHV	FPR2
		FPR3	FPR5	TT3	TTR1	TTR2	TTR3
		TTR4	TTR5	TTR6	TTR7	TTR8	XAMP
1426XA	-15.360	AFAR	SIG	TT5			
1426XA	-7.250	CCL					
1426XA	-5.390	GR					
1426XA	0.000	NEU					

Created by : MIXED

Plotted by : PlotMgr, v5.4.504

Company : MARATHON OIL COMPANY

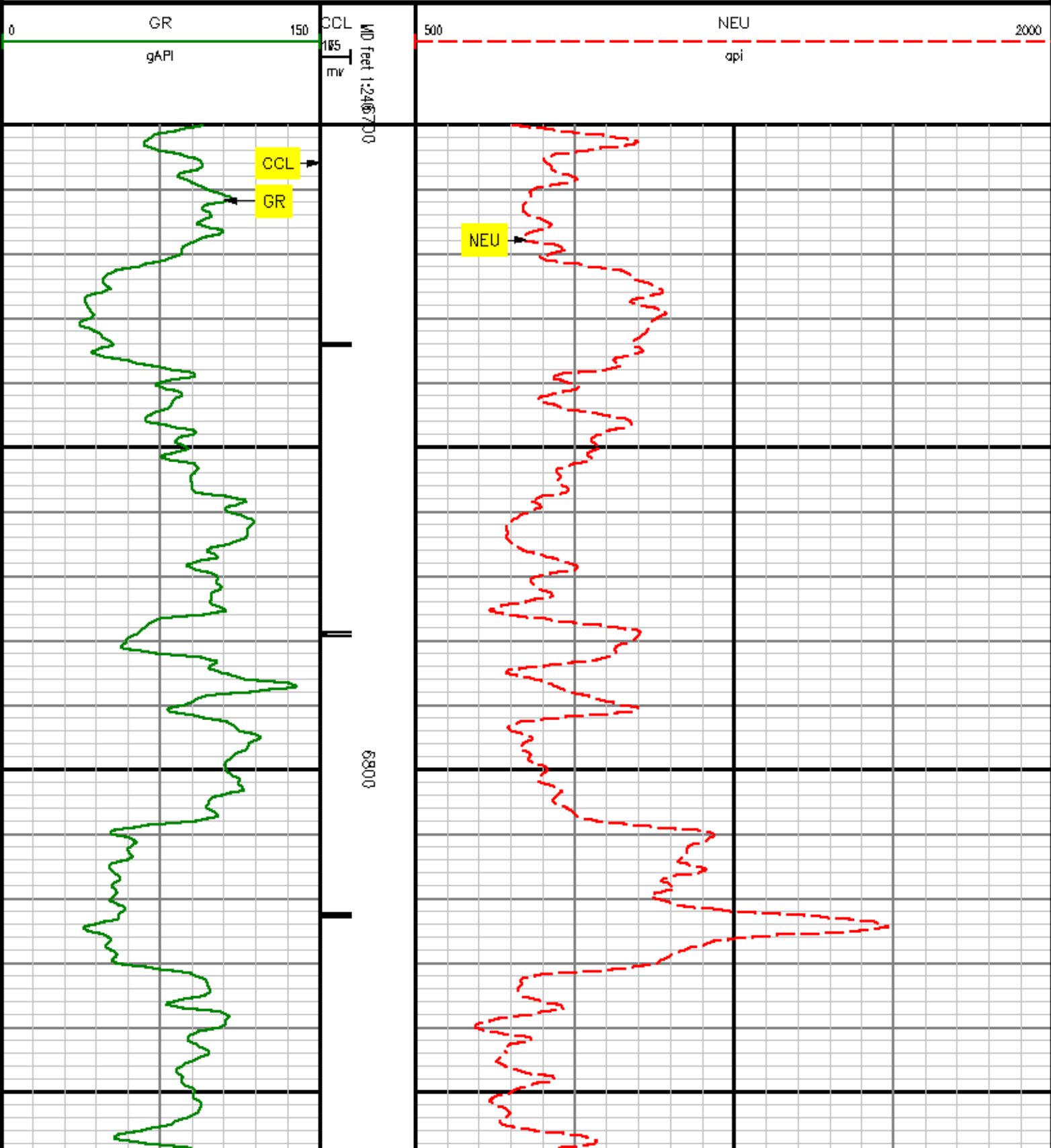
Well : 696-6A-43

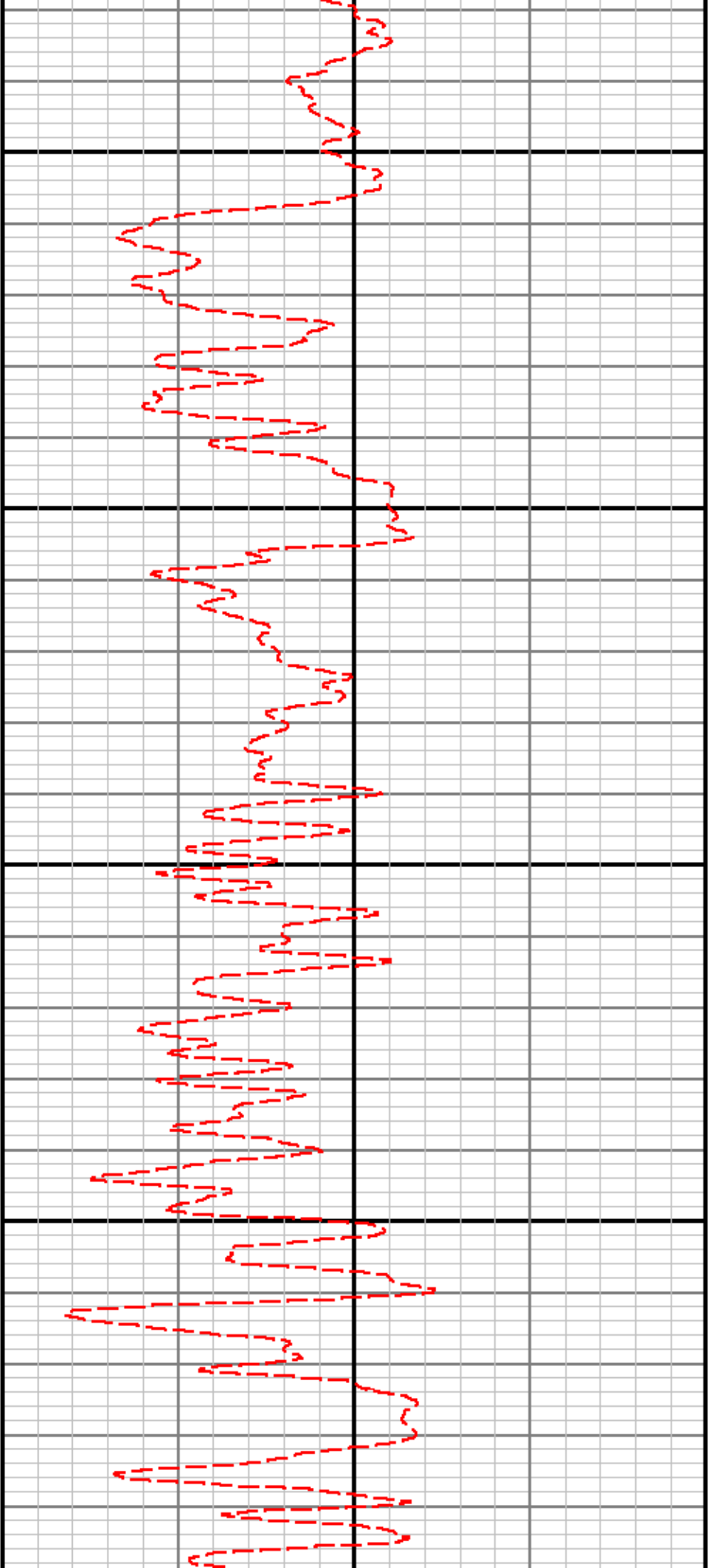
File Name : d:\welldata\43rad\main.xtf

Mode : PlotMgr 5.4.504

Interval : 6700.00 - 10312.00 feet UP

Created : 4/20/2010 5:21:37 AM

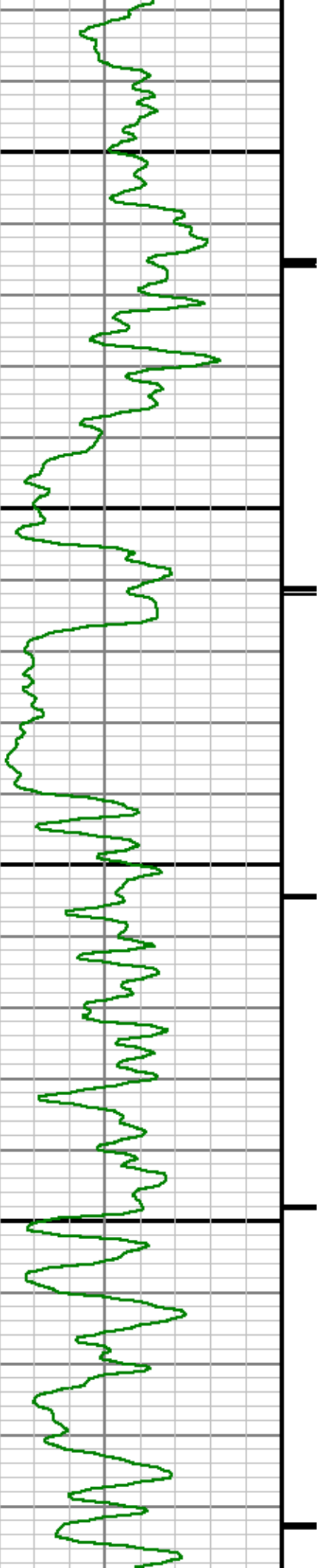


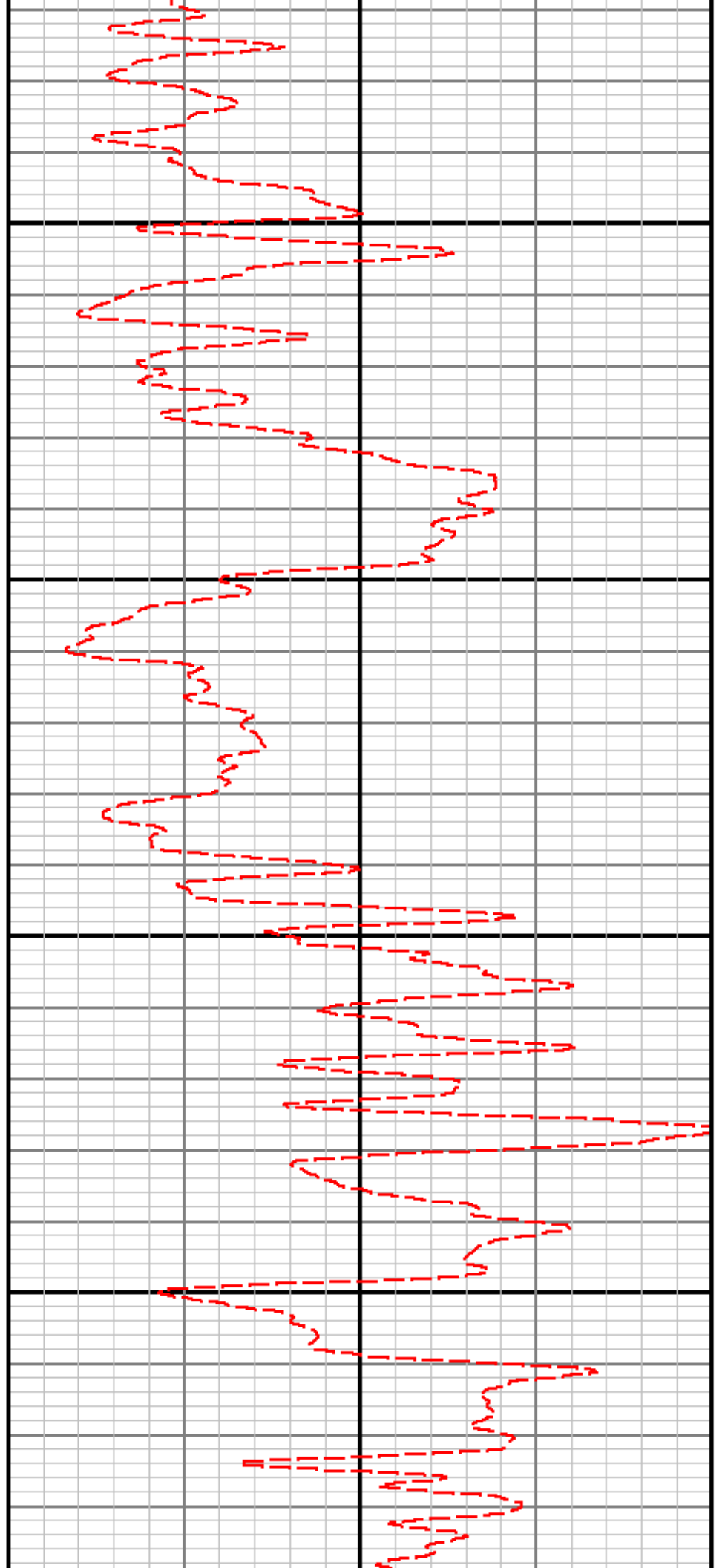
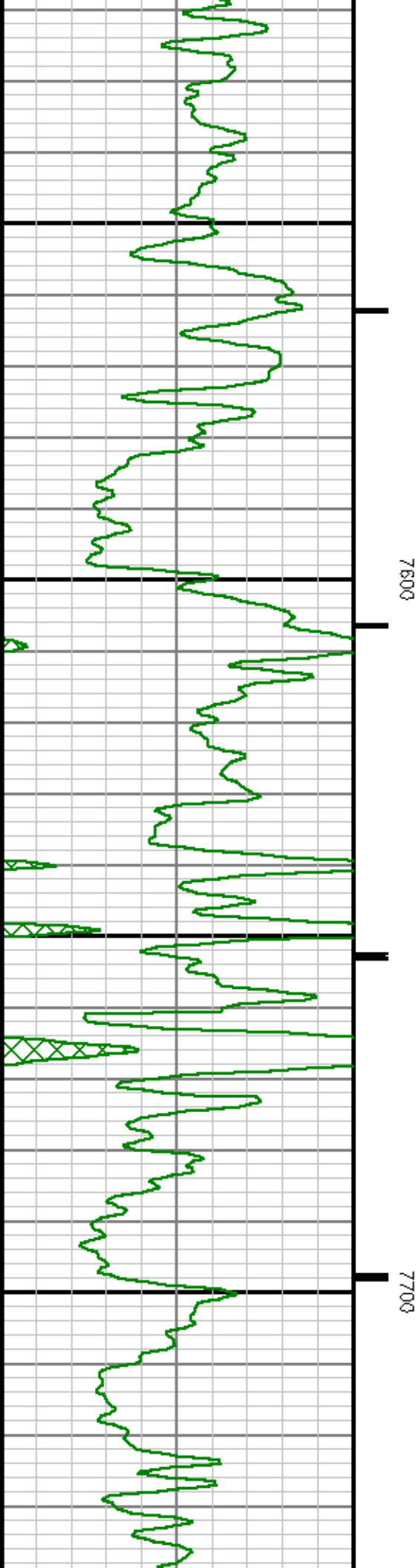


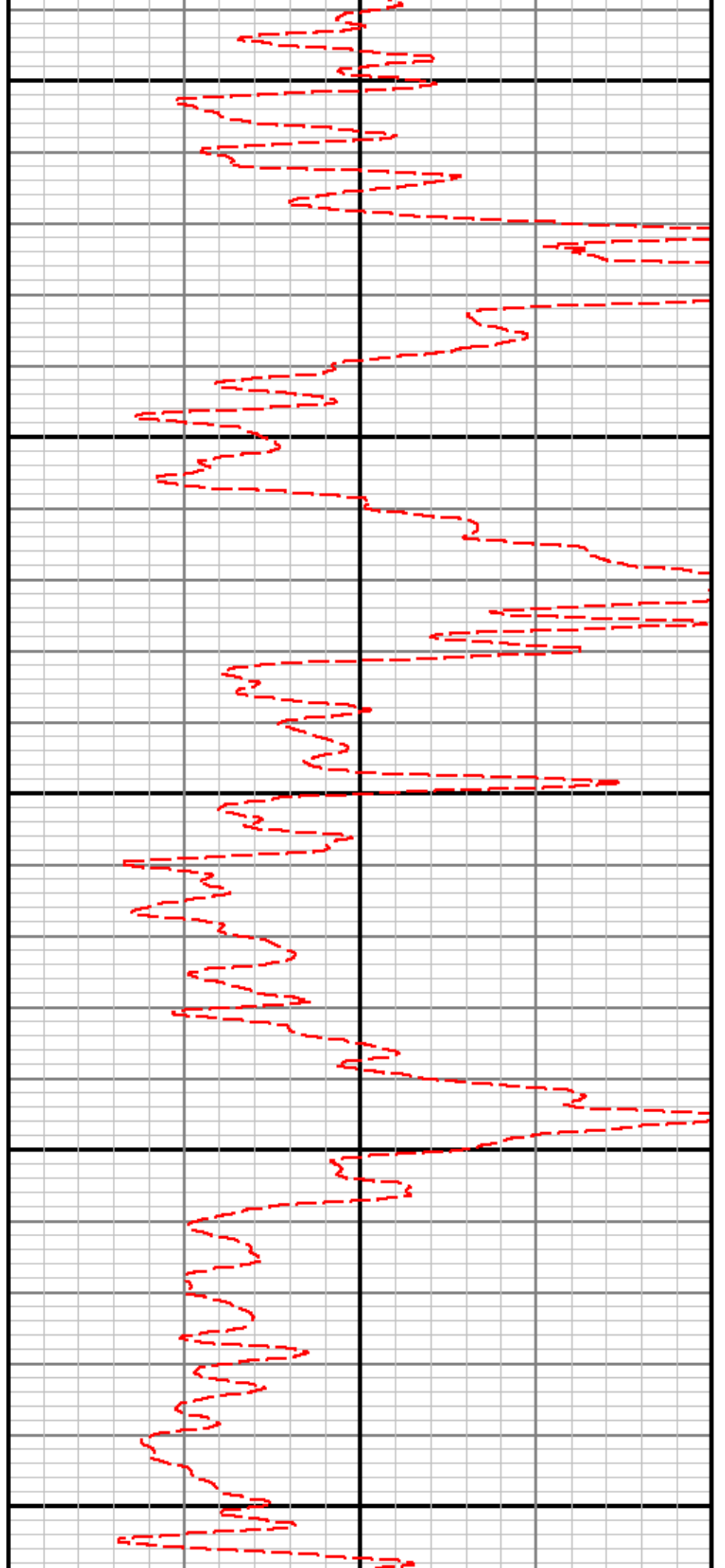
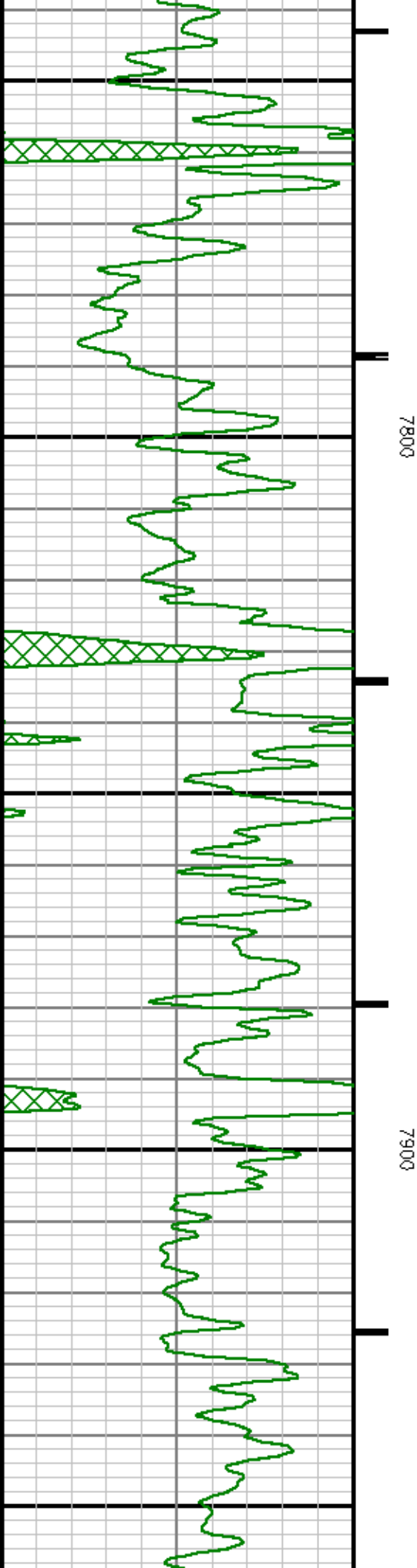
7100

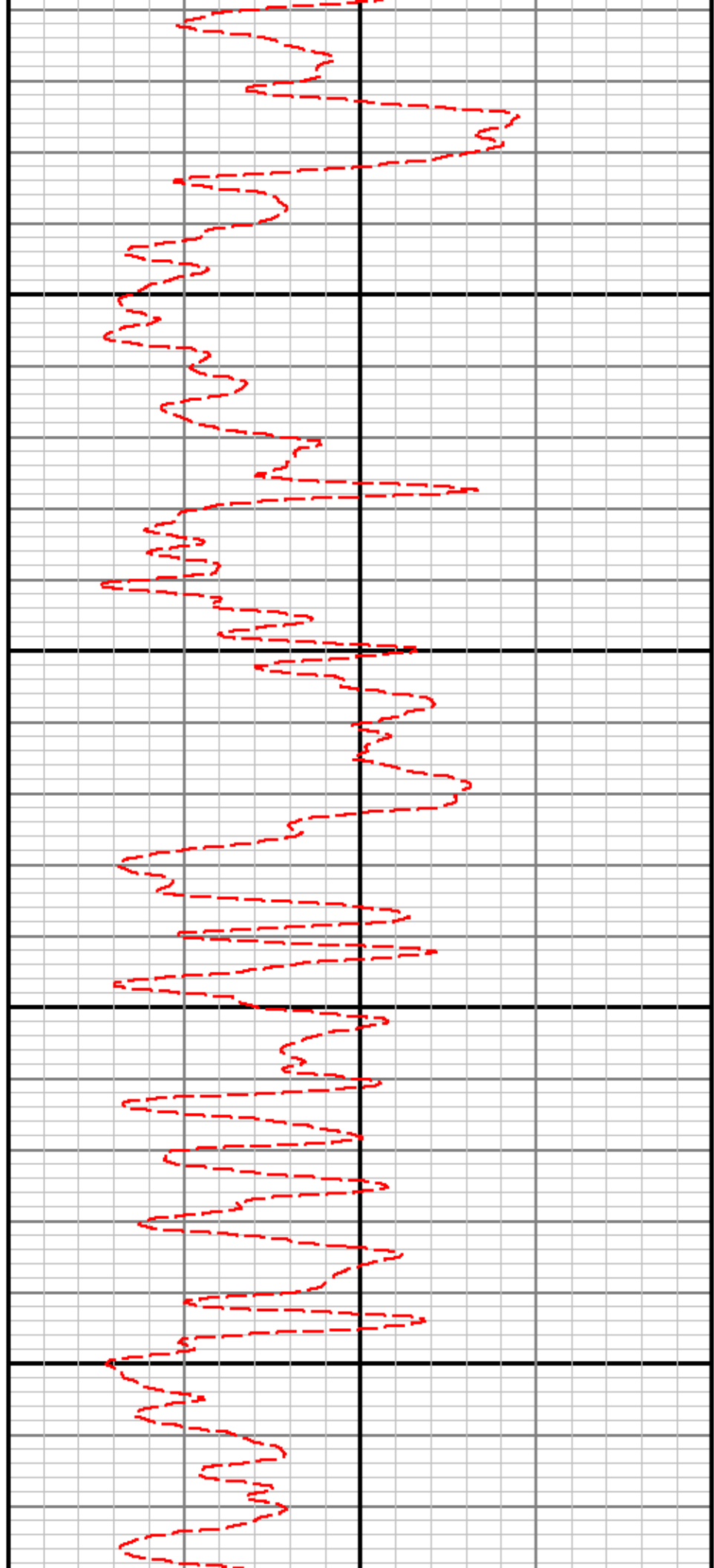
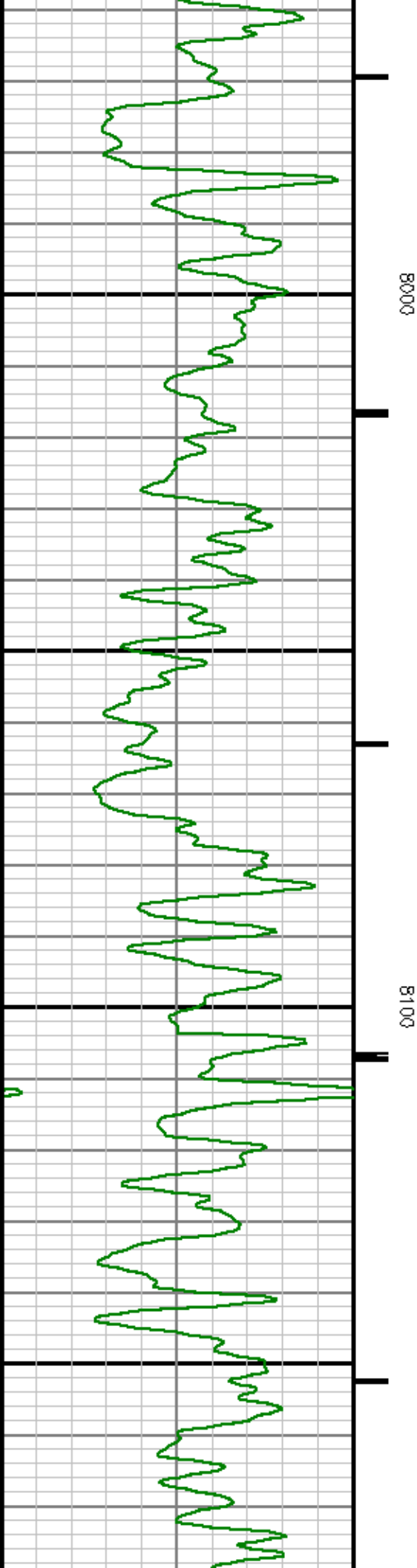
7200

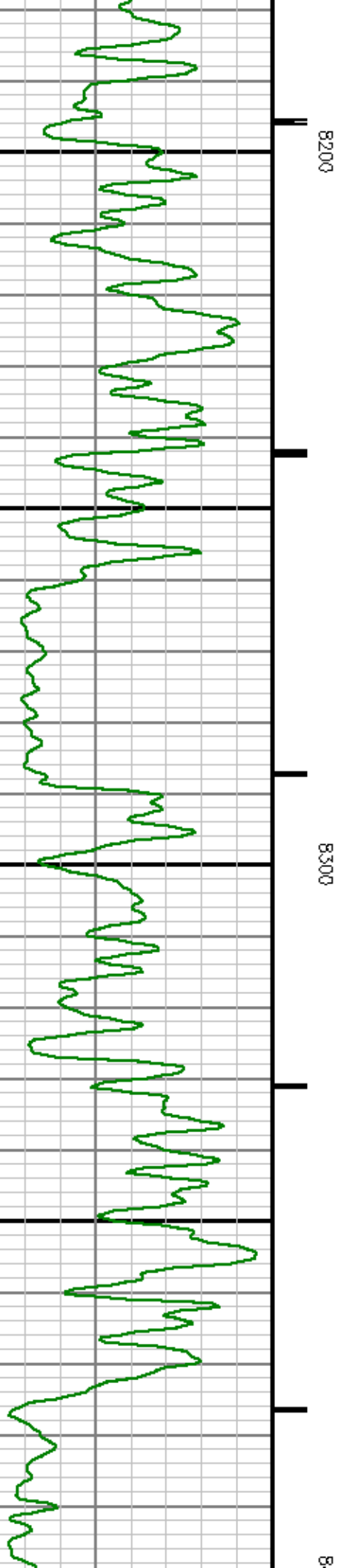
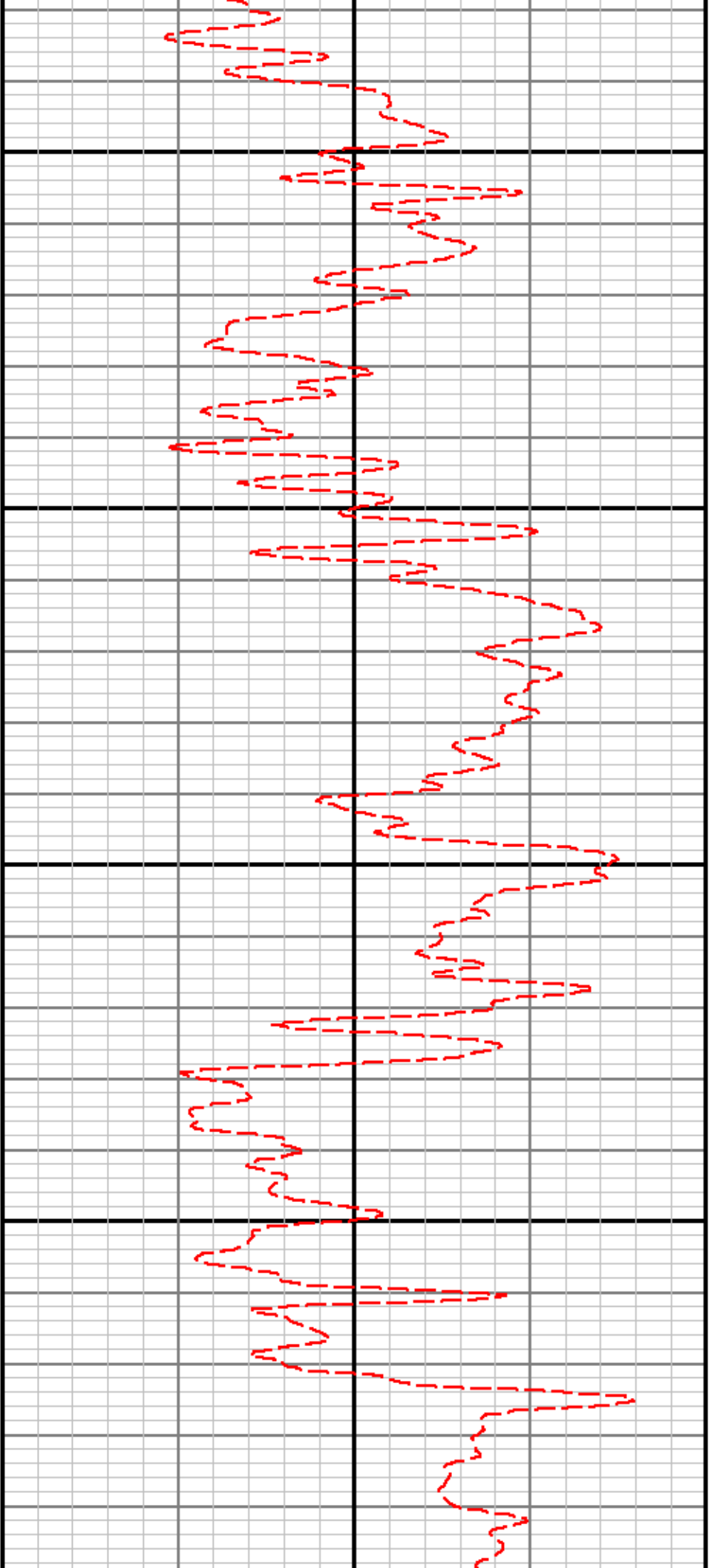
7

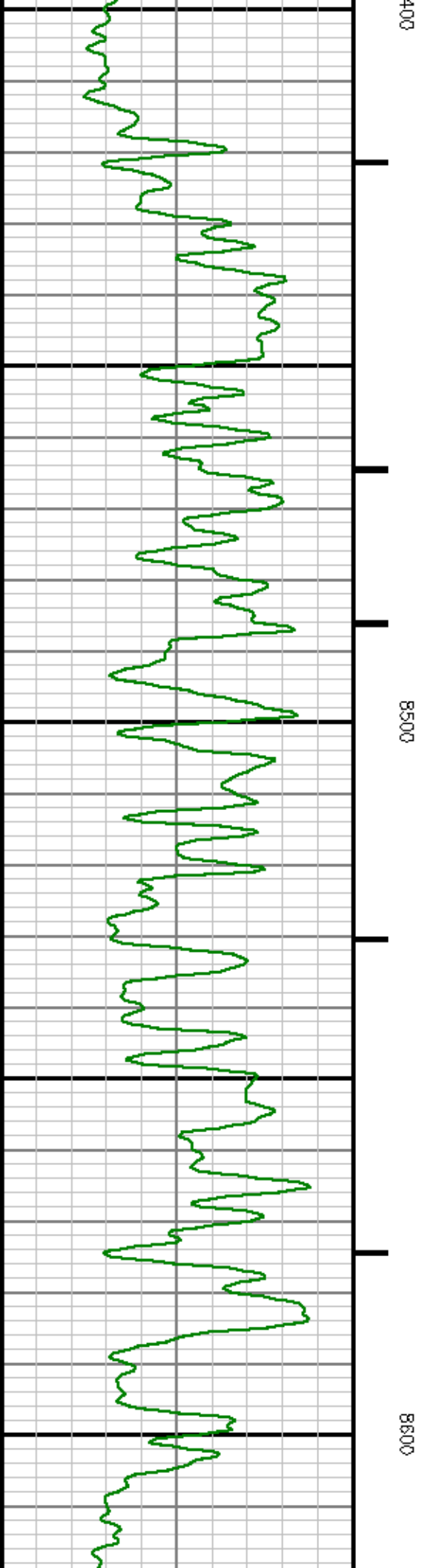
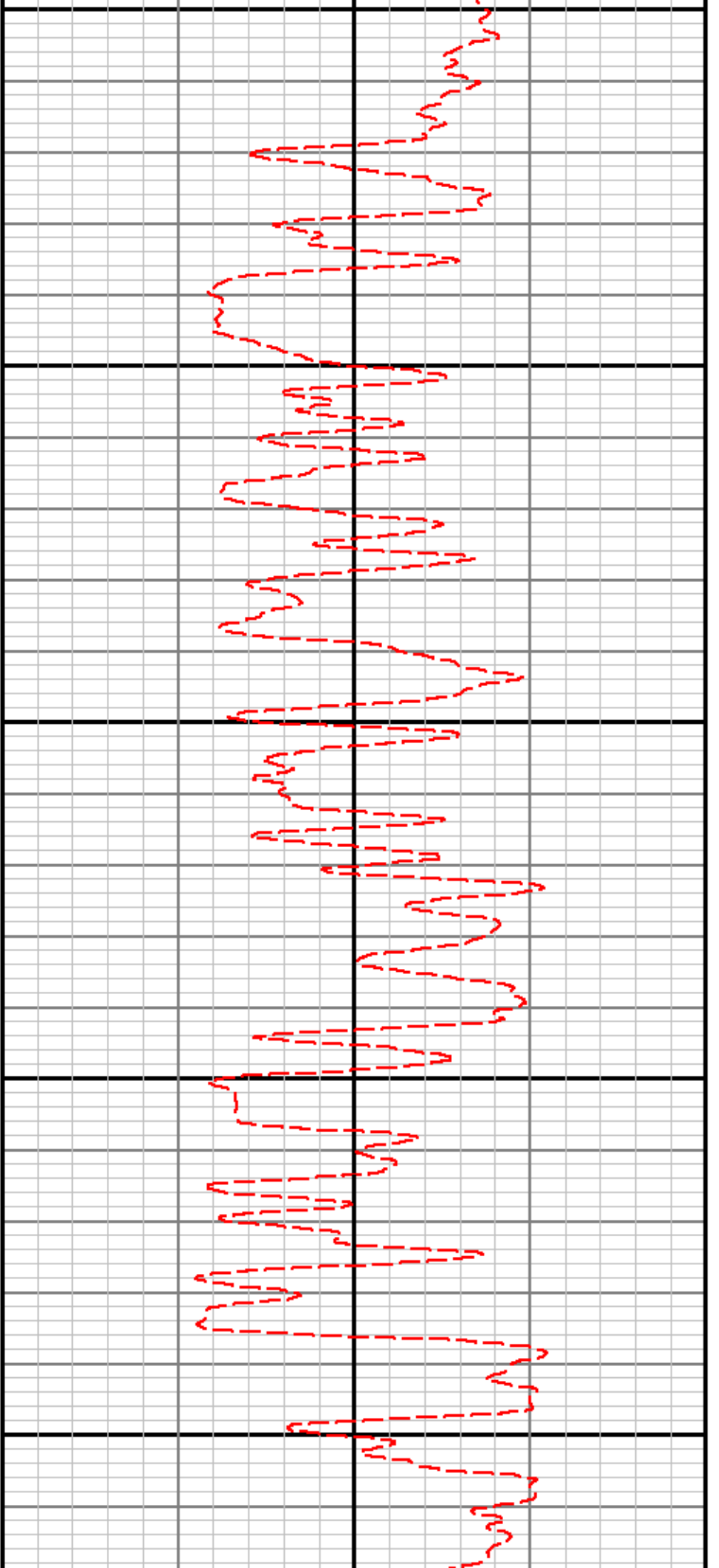


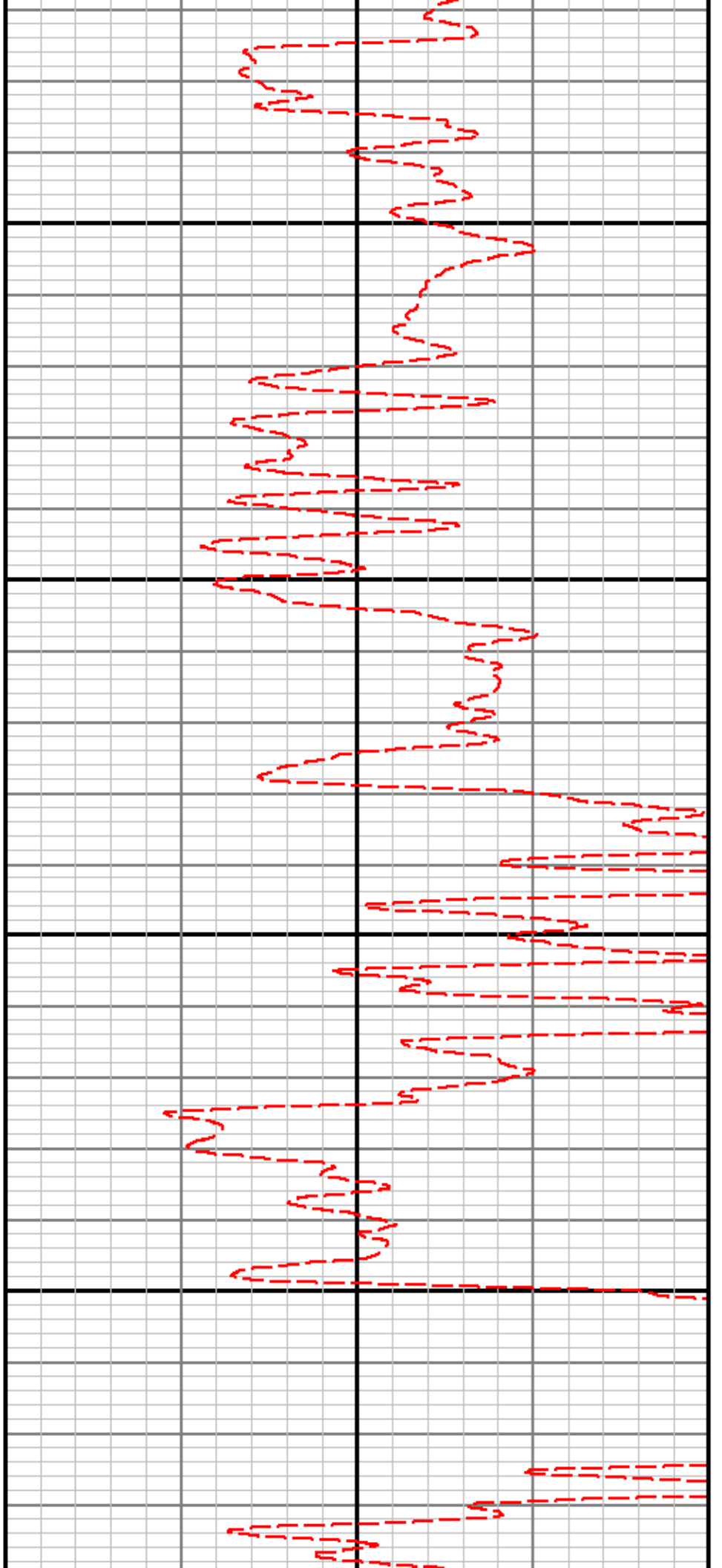
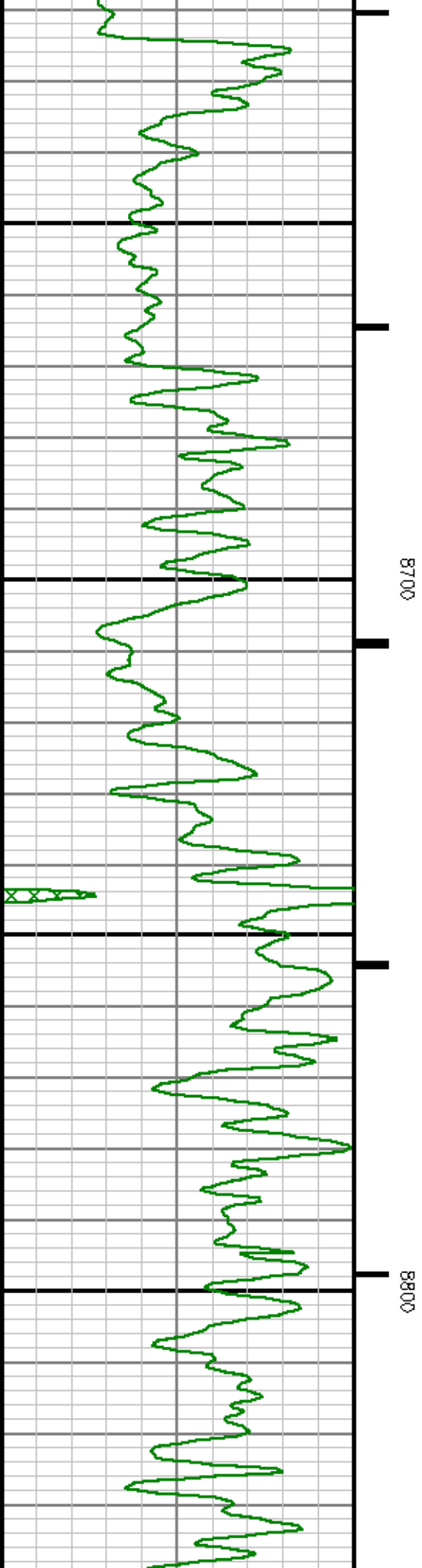


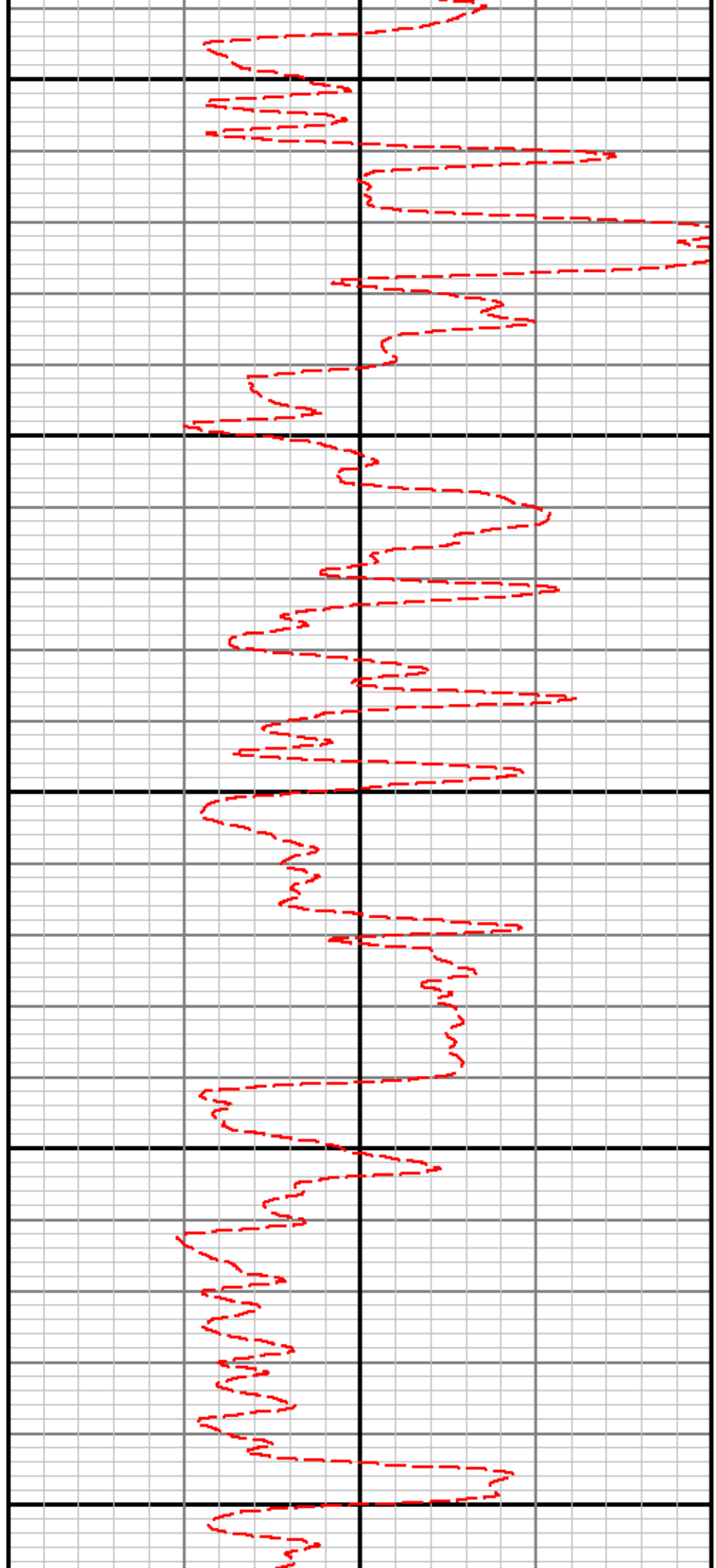
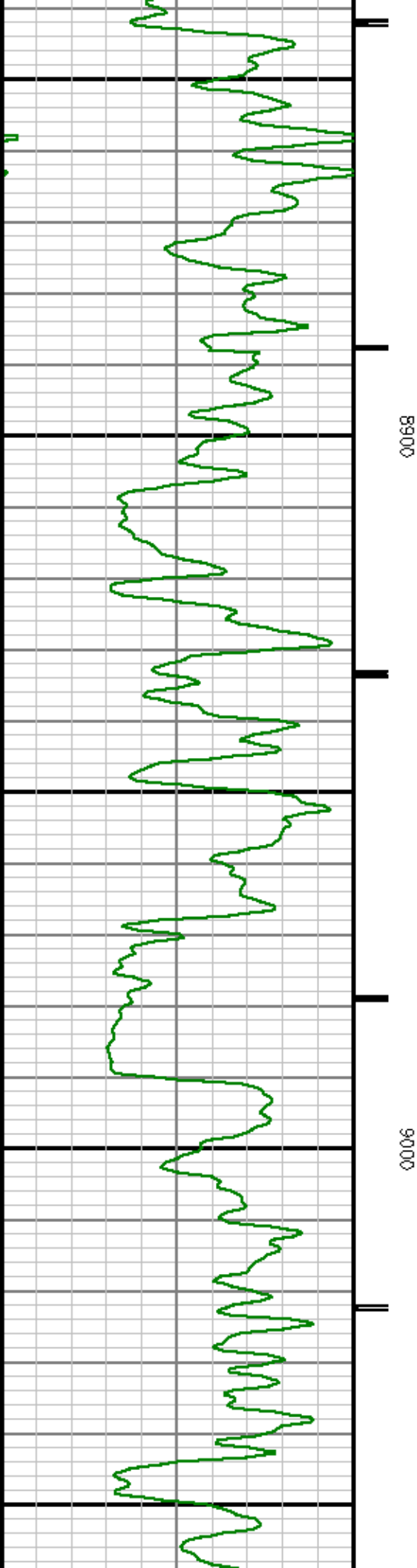


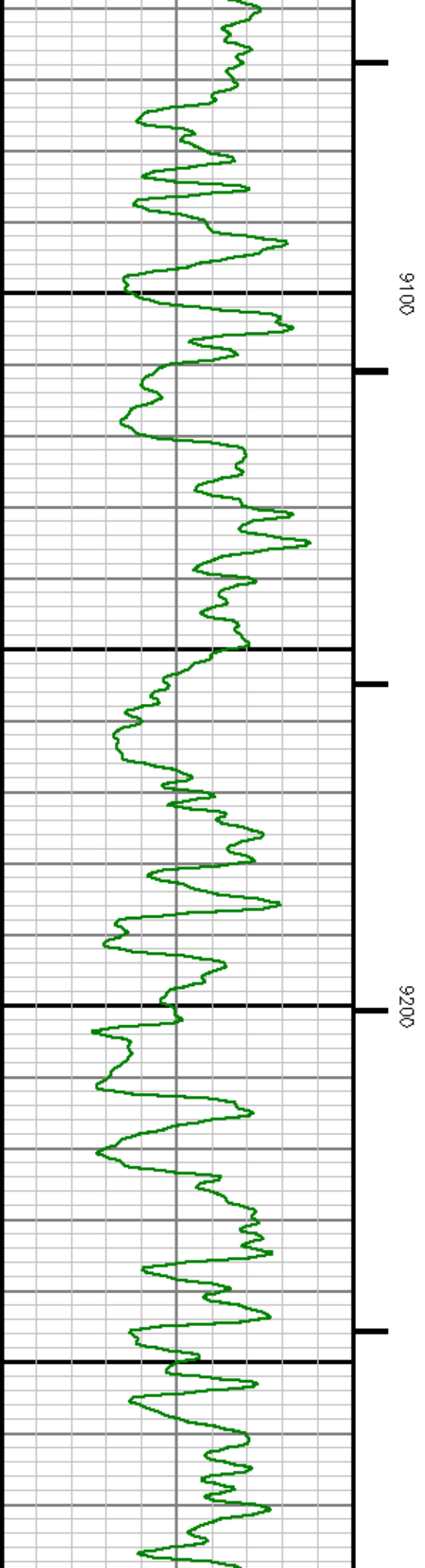
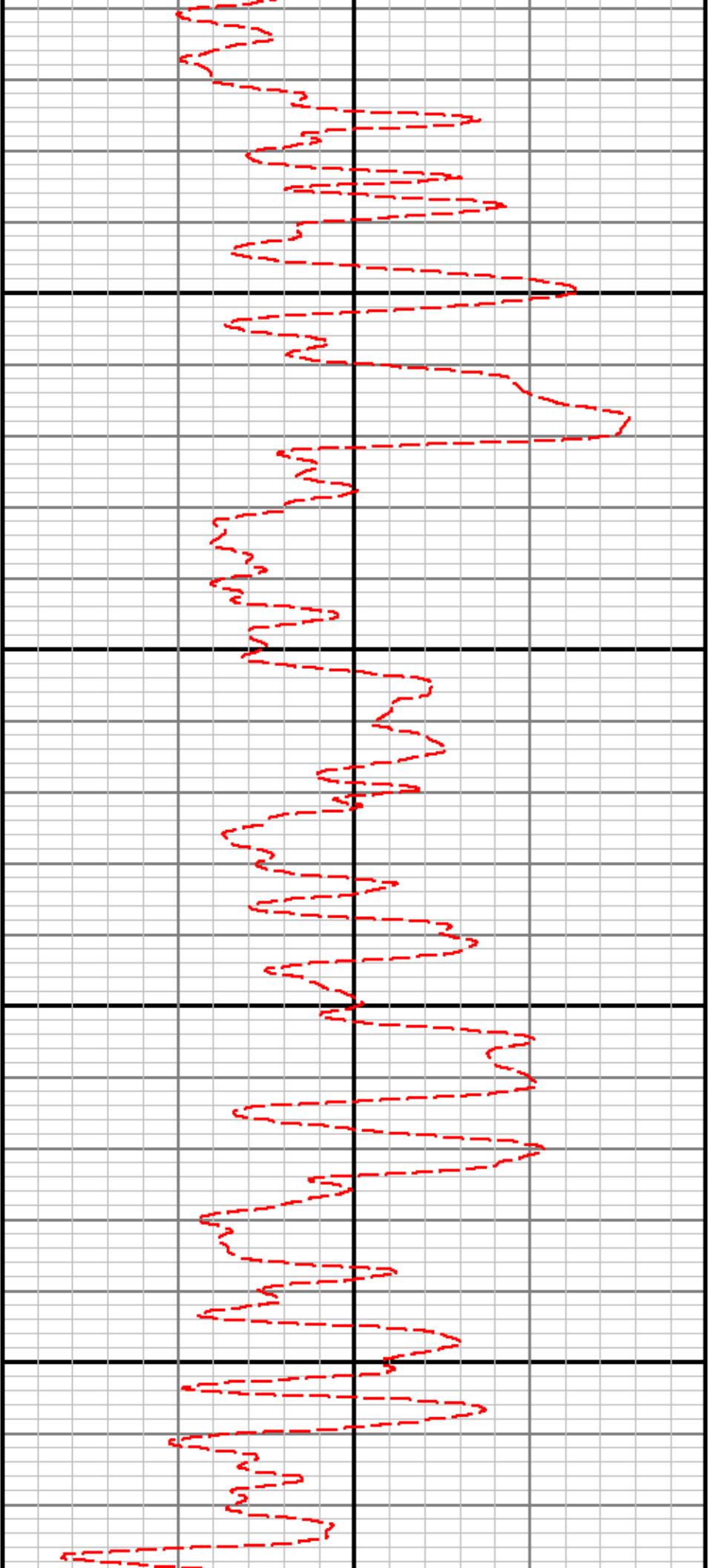


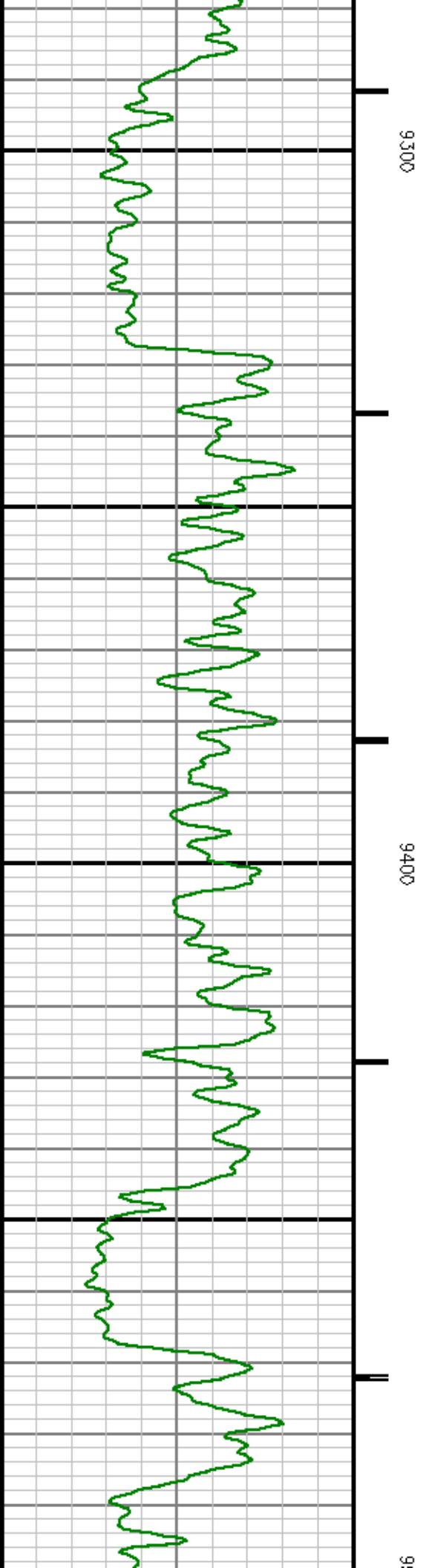
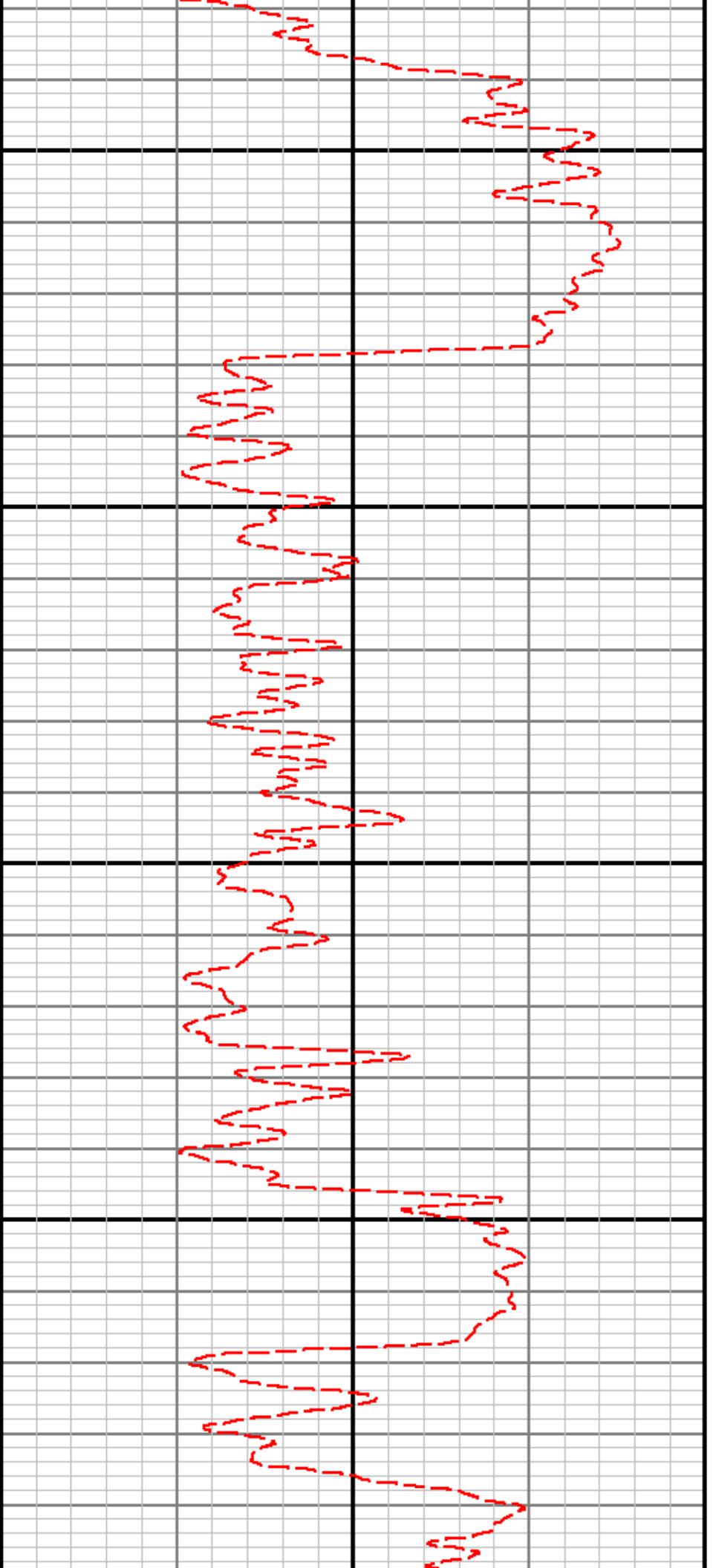


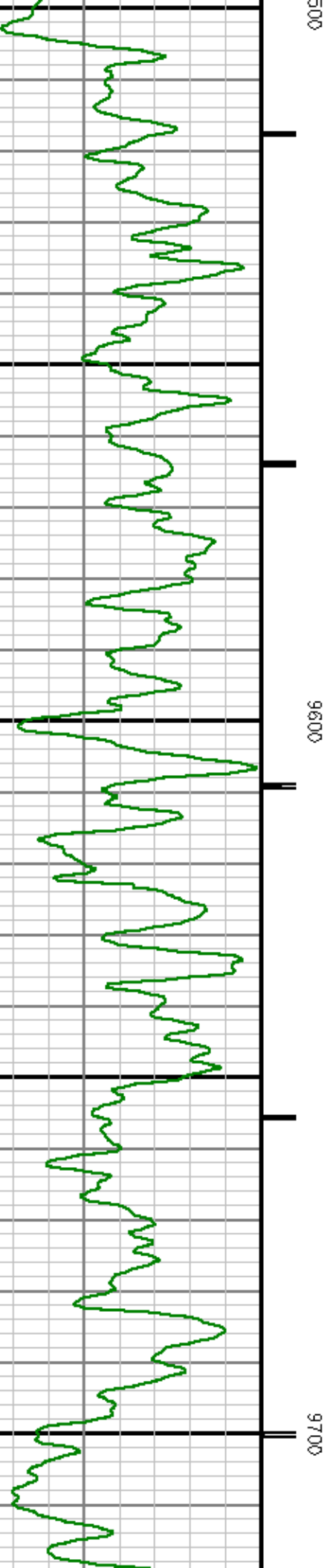
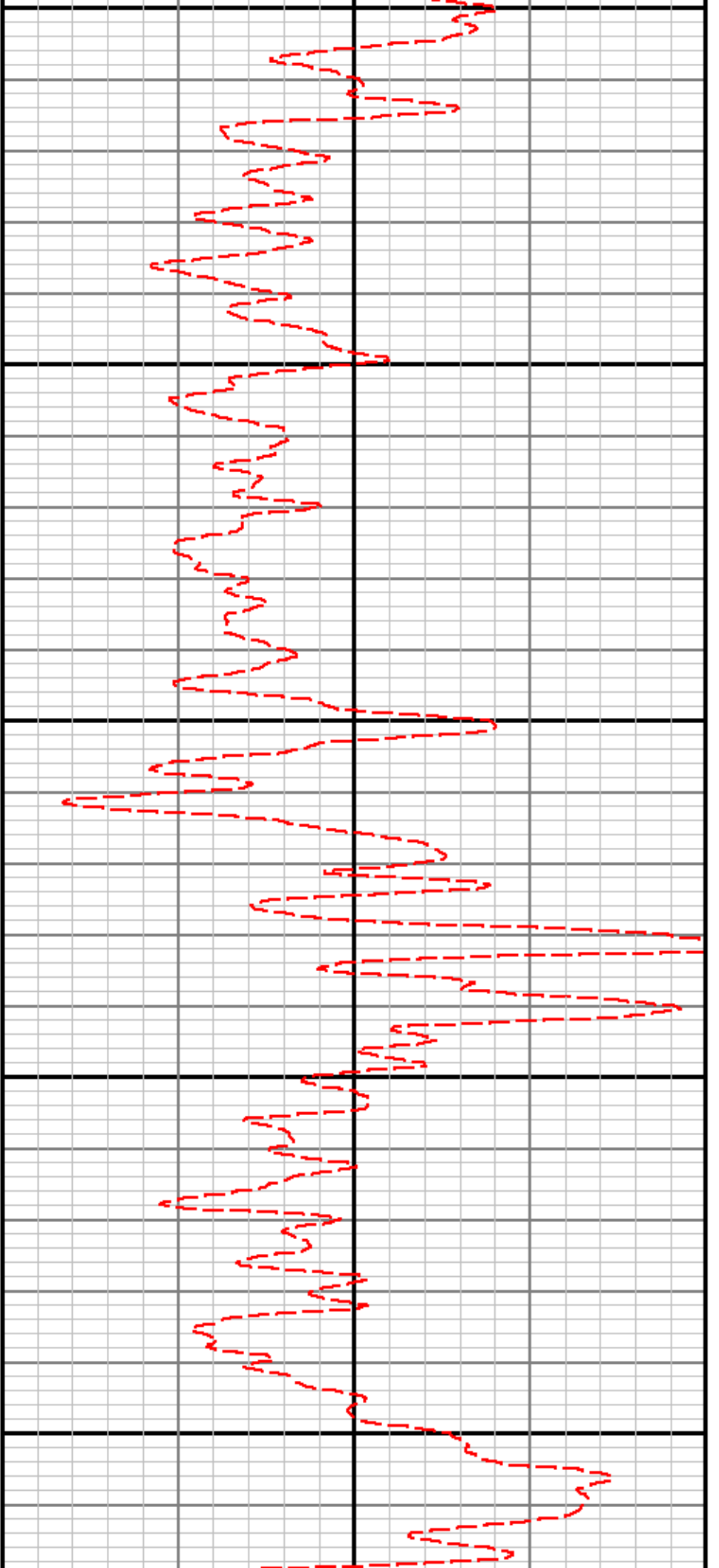


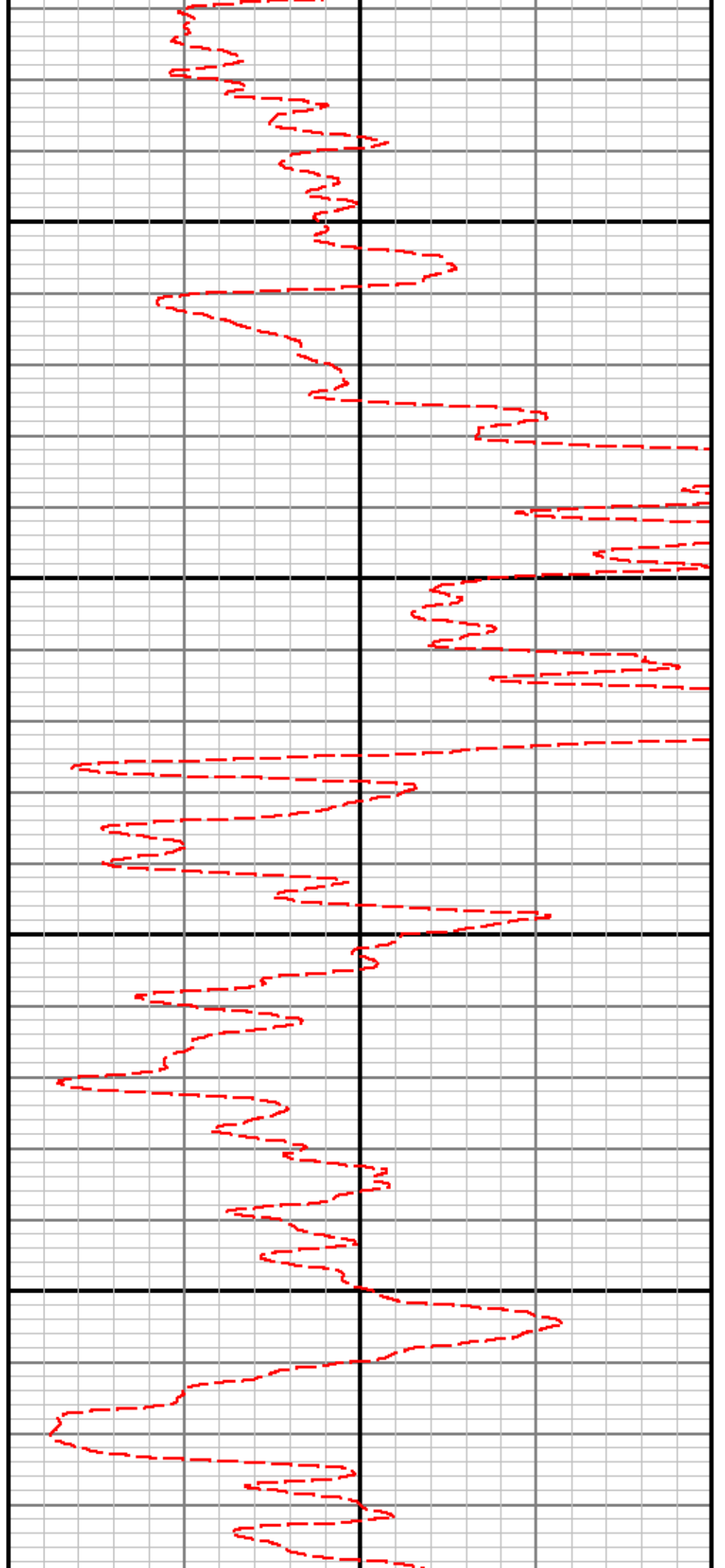
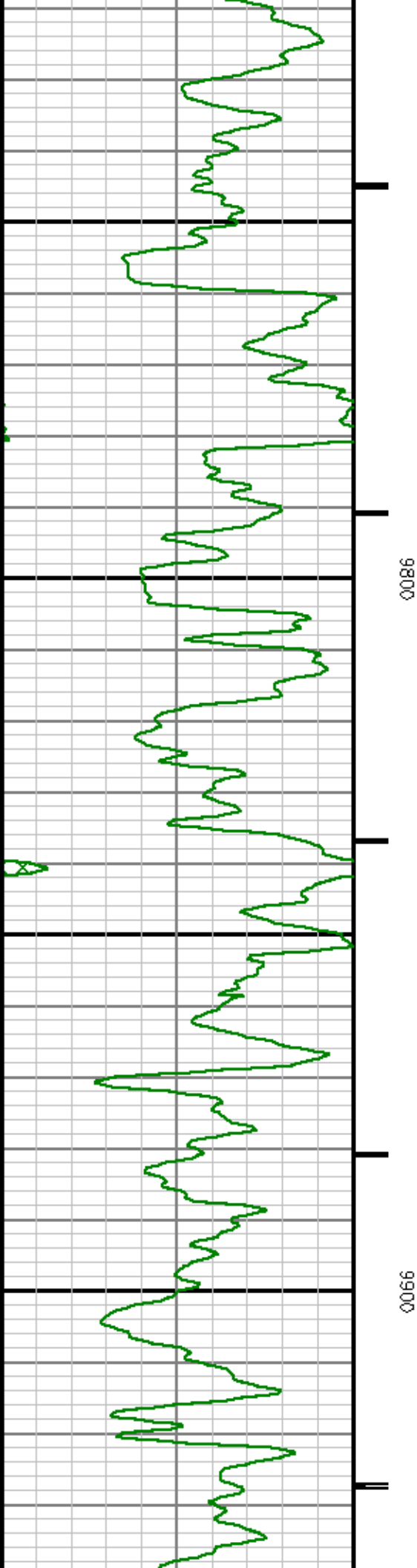


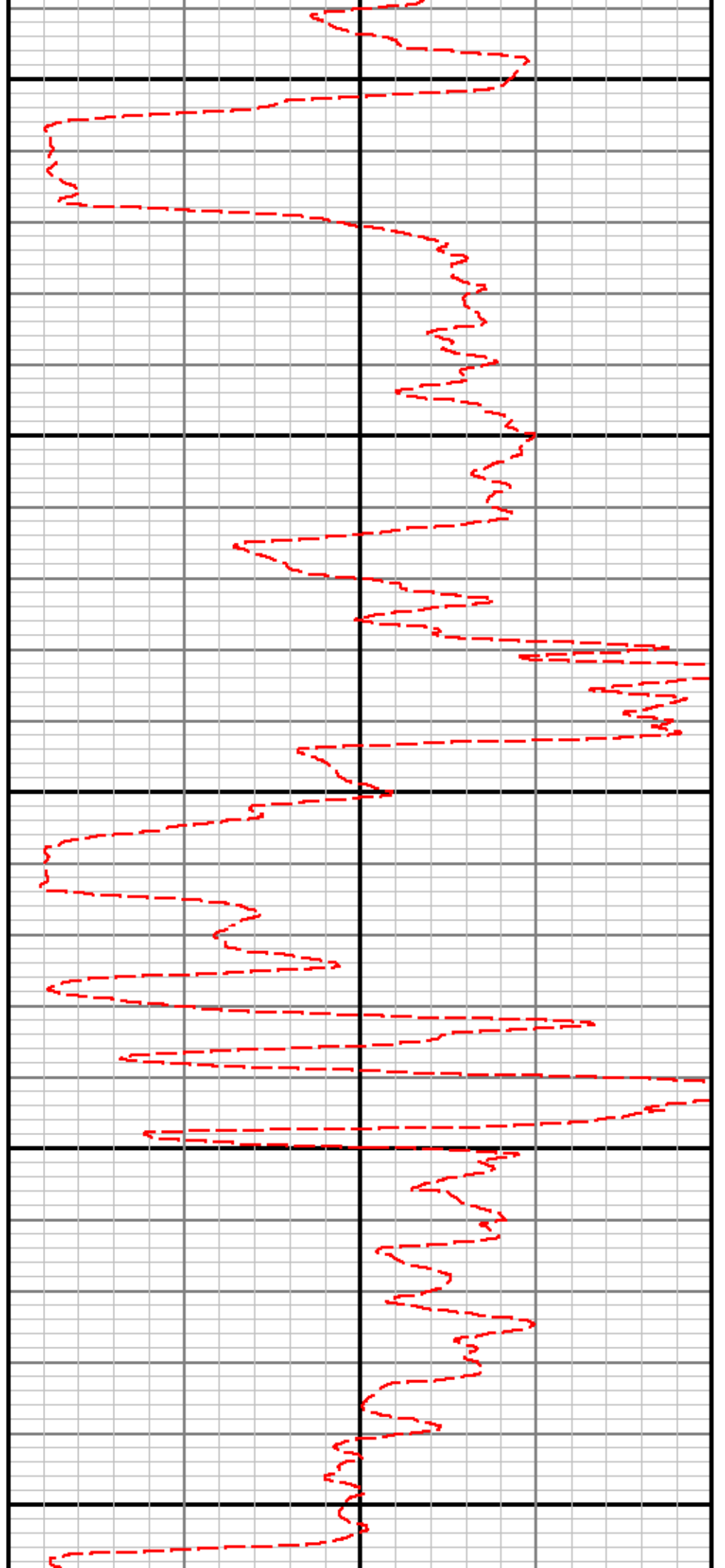
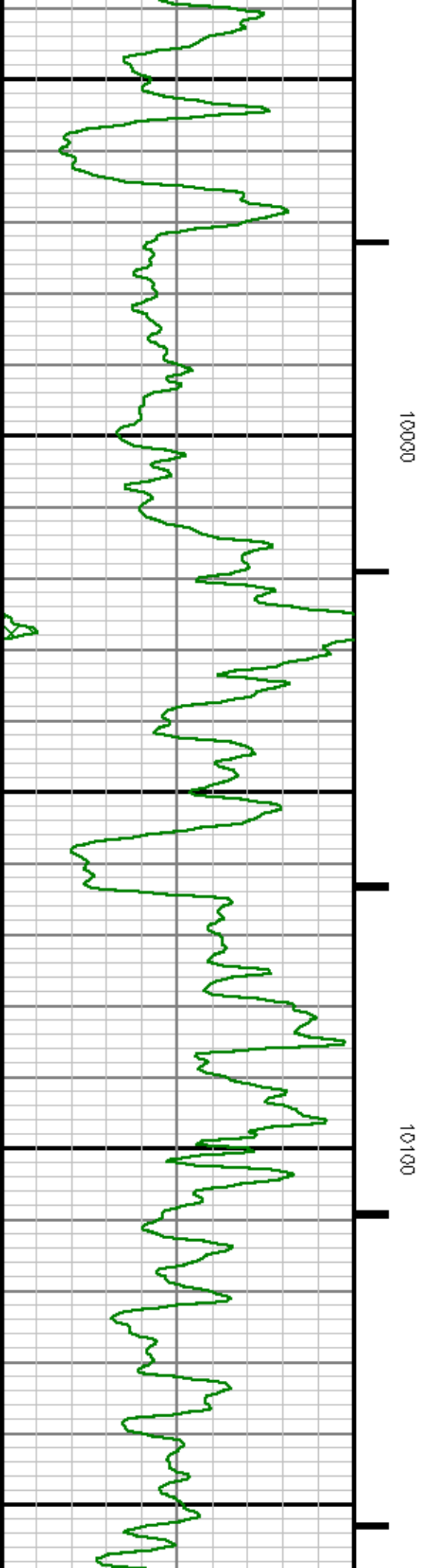












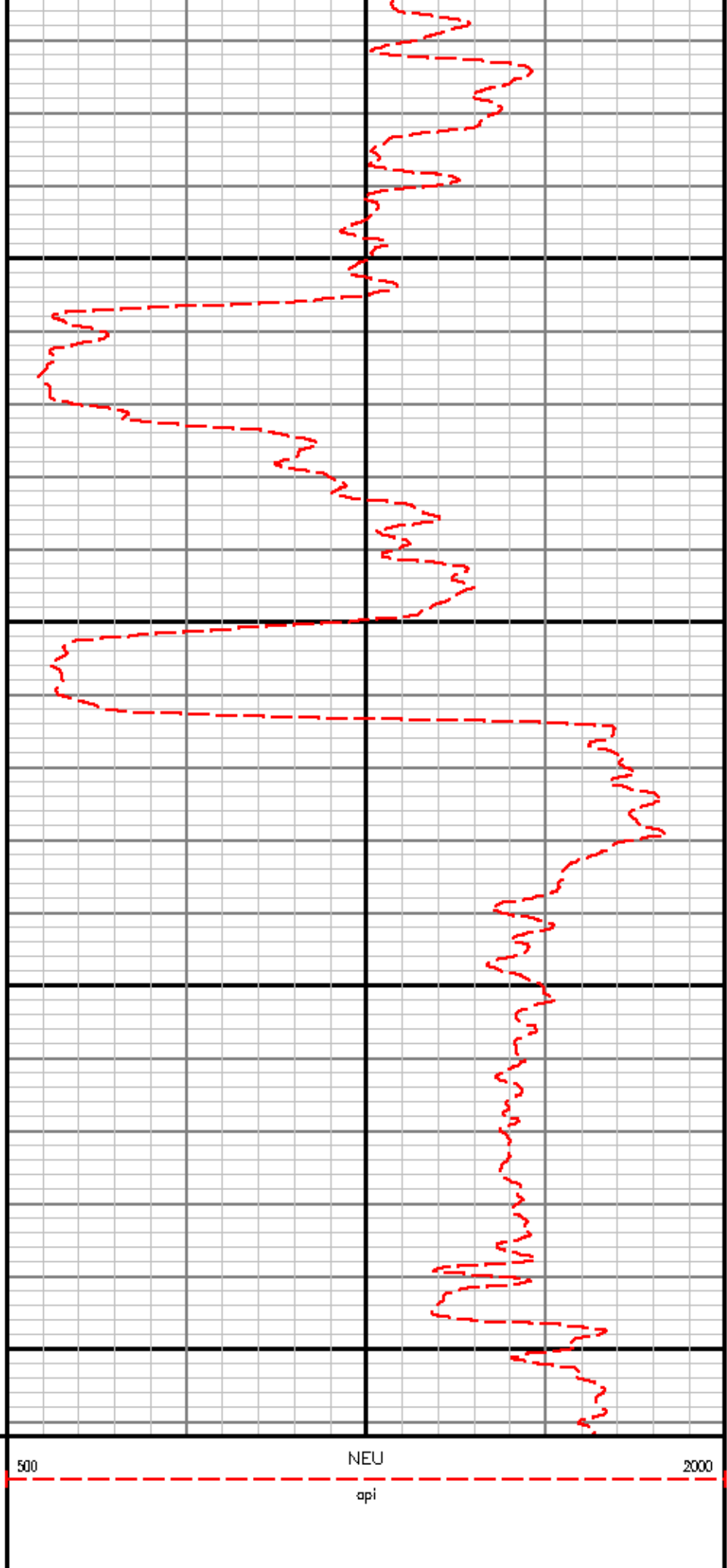
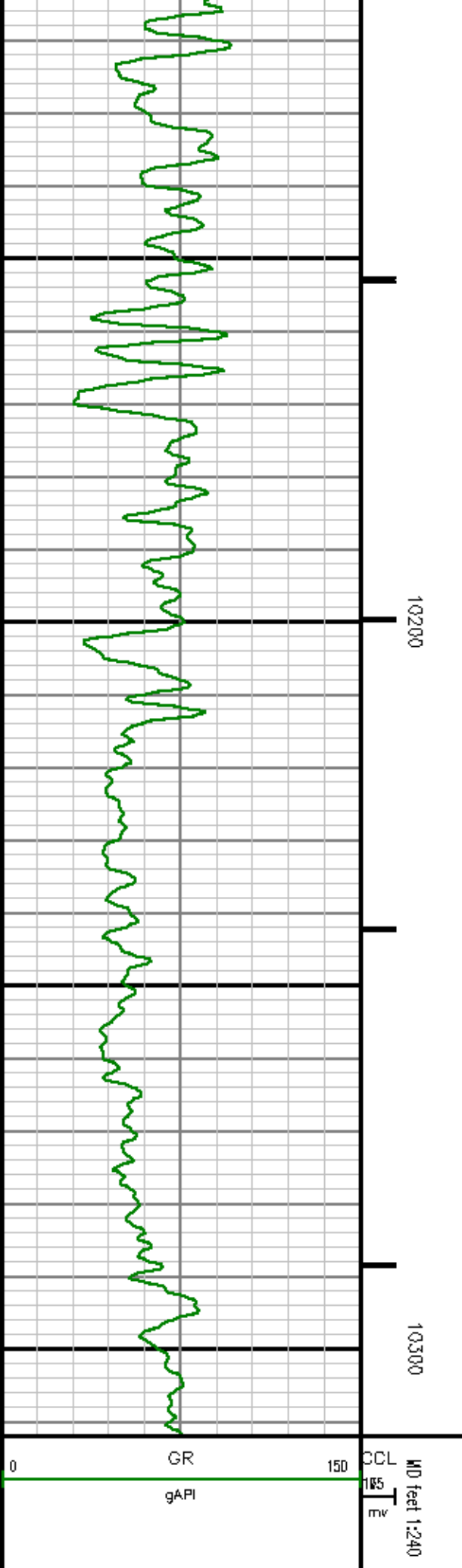
MEASUREMENT TYPE	PARAMETER	VALUE	UNITS	TOP	BOTTOM
RAL	Amp Gate Start Far	316.900	usec	10099.975	10317.000
RAL	Amp Gate Start Near	200.391	usec	10099.975	10317.000
RAL	Amp Gate Start Radial	200.391	usec	10099.975	10317.000
RAL	Amp Gate Width Far	25.000	usec	10099.975	10317.000
RAL	Amp Gate Width Near	25.000	usec	10099.975	10317.000
RAL	Amp Gate Width Radial	25.000	usec	10099.975	10317.000
RAL	casing od	4.500	inches	10099.975	10317.000
RAL	casing wt	11.600	lbm/ft	10099.975	10317.000
RAL	FB Start Far	291.900	usec	10099.975	10317.000
RAL	FB Start Near	175.391	usec	10099.975	10317.000
RAL	FB Start Radial	175.391	usec	10099.975	10317.000
RAL	FB Thresh Far	10.000	mv	10099.975	10317.000
RAL	FB Thresh Near	4.000	mv	10099.975	10317.000
RAL	FB Thresh Radial	4.000	mv	10099.975	10317.000
RAL	Fluid Travel Time	200.000	usec/ft	10099.975	10318.662

DEPTH OFFSETS
(for Acquired Curves)

SERIES	DEPTH OFFSET	ACQUIRED CURVES					
1426XA	-15.360	ACAL	ANR	AR1	AR2	AR3	AR4
		AR5	AR6	AR7	AR8	CHV	FPR2
		FPR3	FPR5	TT3	TTR1	TTR2	TTR3
		TTR4	TTR5	TTR6	TTR7	TTR8	XAMP
1426XA	-15.360	AFAR	SIG	TT5			
1426XA	-7.250	CCL					
1426XA	-5.390	GR					
1426XA	0.000	NEU					

Created by : RAL, v4.6.007
Plotted by : PlotMgr, v5.4.504
Company : MARATHON OIL COMPANY
Well : 696-6A-43
File Name : d:\well\data\43rad\repeat.xtf
Mode : PlotMgr 5.4.504
Interval : 10109.75 - 10312.00 feet UP
Created : 4/20/2010 5:05:51 AM





CCL
105
mv

MD feet 1:240

CALIBRATION SUMMARY

GAMMA RAY

Calibration File: C:\case\calver\GR\503M1.cal

CALIBRATION SUMMARY

DATE/TIME PERFORMED:	Wed Mar 17 08:33:21 2010	TOOL SERIES:	1426XA	ASSET:	503	SEQ:	M1
Calibrator #	Background [cps]	Calibrator On [cps]	Multiplicative	Background [api]	Calibrator On [api]	Differential [api]	
S2K DAB56	26.93	166.27	1.328	35.76	220.76	185.00	

Verification File: C:\case\calver\GR\503M1.VP

PRIMARY LOG VERIFICATION

DATE/TIME PERFORMED:	Wed Mar 17 08:36:14 2010	TOOL SERIES:	1426XA	ASSET:	503	SEQ:	M1
Calibrator #	Background [cps]	Calibrator On [cps]	Multiplicative	Background [api]	Calibrator On [api]	Differential [api]	
S2K DAB56	26.40	171.91	1.328	35.05	228.26	193.20	

NEUTRON

Calibration File: C:\CASE\CALVER\NEU\50344.cal

CALIBRATION SUMMARY

DATE/TIME PERFORMED:	Thu Apr 08 10:04:39 2010	TOOL SERIES:	2459XA	ASSET:	503	SEQ:	A4
Calibrator #	Source #	Bushing Down [cps]	Bushing Up [cps]	Multiplicative	Bushing Down [api]	Bushing Up [api]	Differential [api]
SHOP SHOP	S17R5 S35012	1571.64	575.31	0.873	1372.36	502.36	870.00

TOOL DIAGRAM

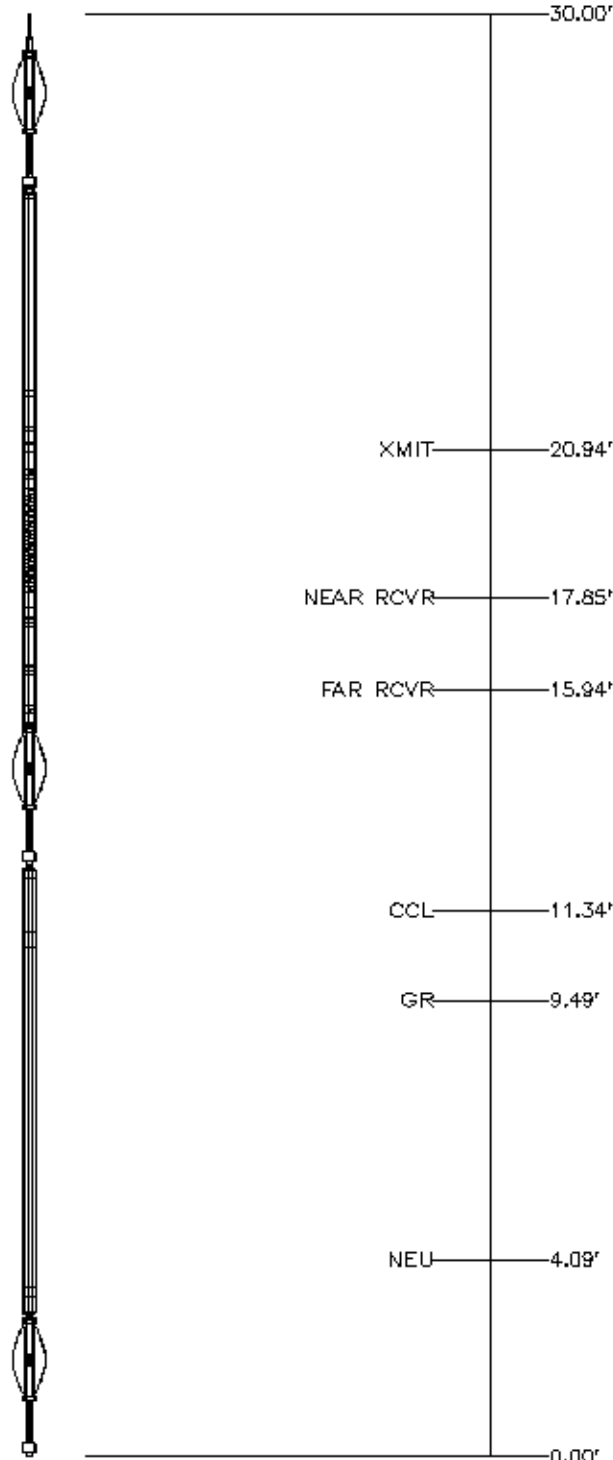
OTA SHORT CABLE HEAD	
CENTRALIZER	
Series	RALCENT
Mnemonic	CENT
Diameter	3.12"
Weight	20.00 lb

PROBE 2 3/4 DUAL RECEIVER RADII	
Series	1426XA
Mnemonic	PROB
Diameter	2.75"
Length	11.17'
Measure Point	0.75' FAR RCVR
Measure Point	2.67' NEAR RCVR
Measure Point	5.75' XMIT
Temp Rating	350.00 °F
Press Rating	18000.00 PSI

CENTRALIZER	
Series	RALCENT
Mnemonic	CENT
Diameter	3.12"
Weight	20.00 lb

Probe GR/CCL/NEU	
Series	2459XA
Mnemonic	PROB
Diameter	2.75"
Length	9.42'
Measure Point	1.21' NEU
Measure Point	6.60' GR
Measure Point	8.46' CCL

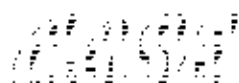
CENTRALIZER	
Series	RALCENT
Mnemonic	CENT
Diameter	3.12"
Weight	20.00 lb



Total Length: 30.00'
Total Weight: Not Available
Max Diameter: 0' 3.12"



Baker Atlas



Company	WARATHON OIL COMPANY
Well	696-6A-43
Field	GRAND VALLEY
County	GARFIELD
State	COLORADO

Location	Elevations
SHL: 3465' FNL & 1296' FNL	KB 8158 ft
	DF 8157 ft

File No:
1752
API No:
06045183850000

GL 8137 ft