



SUPERIOR
Hays,
Kansas

SONIC LOG

Company MULL DRILLING COMPANY, INC.
Well #1-14 TALLMAN FARMS "A"
Field WILDCAT
County KIOWA
State COLORADO

Company MULL DRILLING COMPANY, INC.
Well #1-14 TALLMAN FARMS "A"
Field WILDCAT
County KIOWA State COLORADO

Location: API # : 05-061-06836-0000

1294' FSL & 605' FWL

SEC 14 TWP 18S RGE 45W

Permanent Datum GROUND LEVEL Elevation 3937
Log Measured From KELLY BUSHING 13' A.G.L.
Drilling Measured From KELLY BUSHING

Elevation
K.B. 3950
D.F. 3948
G.L. 3937

Date 12/23/09

Run Number TWO

Depth Driller 5050

Depth Logger 5050

Bottom Logged Interval 5037

Top Log Interval 300

Casing Driller 8 5/8"@335'

Casing Logger 336

Bit Size 7 7/8

Type Fluid in Hole CHEMICAL MUD

Density / Viscosity 9.2/84

pH / Fluid Loss 10.5/8.0

Source of Sample FLOWLINE

Rm @ Meas. Temp 1.20@60F

Rmf @ Meas. Temp .900@60F

Rmc @ Meas. Temp 1.44@60F

Source of Rmf / Rmc MEASUREMENT

Rm @ BHT .576@125F

Time Circulation Stopped 5 HOURS

Time Logger on Bottom 7:00 P.M.

Maximum Recorded Temperature 125F

Equipment Number 0836

Location HAYS, KANSAS

Recorded By JEFF LUEBBERS

Witnessed By KEVIN KESSLER

<<< Fold Here >>>

All interpretations are opinions based on inferences from electrical or other measurements and we cannot and do not guarantee the accuracy or correctness of any interpretation, and we shall not, except in the case of gross or willful negligence on our part, be liable or responsible for any loss, costs, damages, or expenses incurred or sustained by anyone resulting from any interpretation made by any of our officers, agents or employees. These interpretations are also subject to our general terms and conditions set out in our current Price Schedule.

Comments

THANK YOU FOR USING SUPERIOR WELL SERVICES HAYS, KANSAS (785) 628-6395
DIRECTIONS
BRANDON, CO. & HWY 96 E. EDGE @MM #186, 3 N. ON RD. #59, 1/4 E., N. INTO

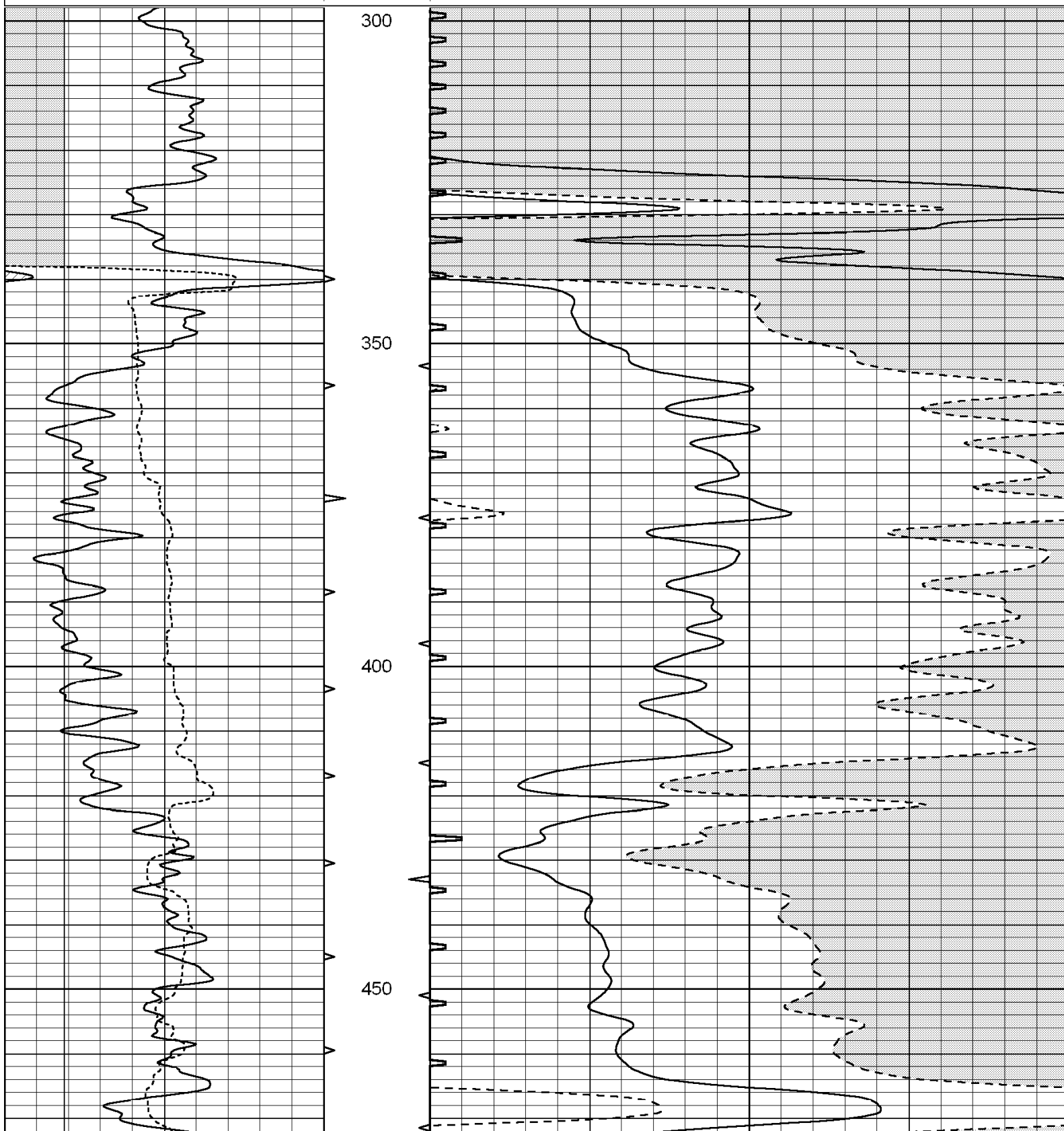


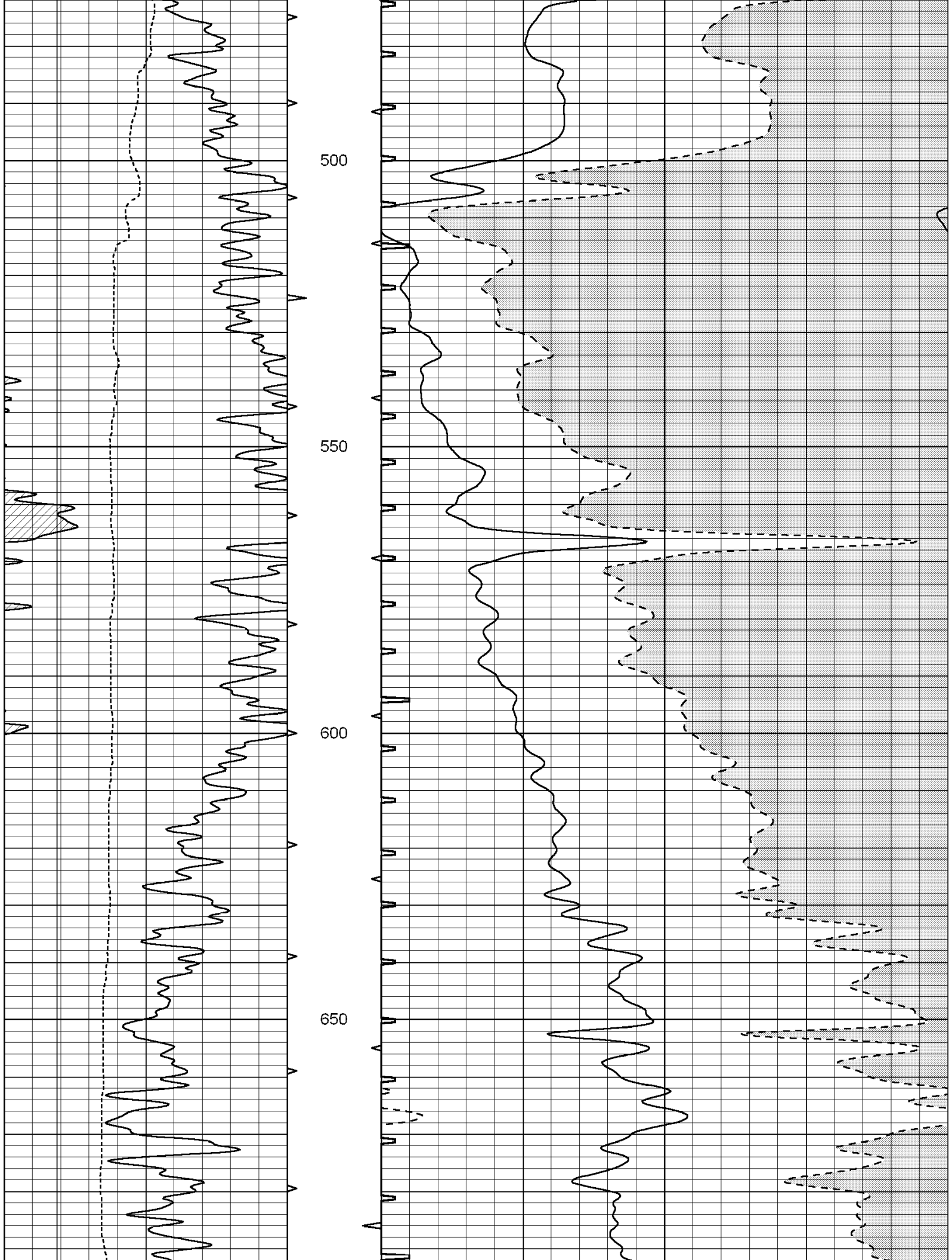
SUPERIOR
Hays,
Kansas

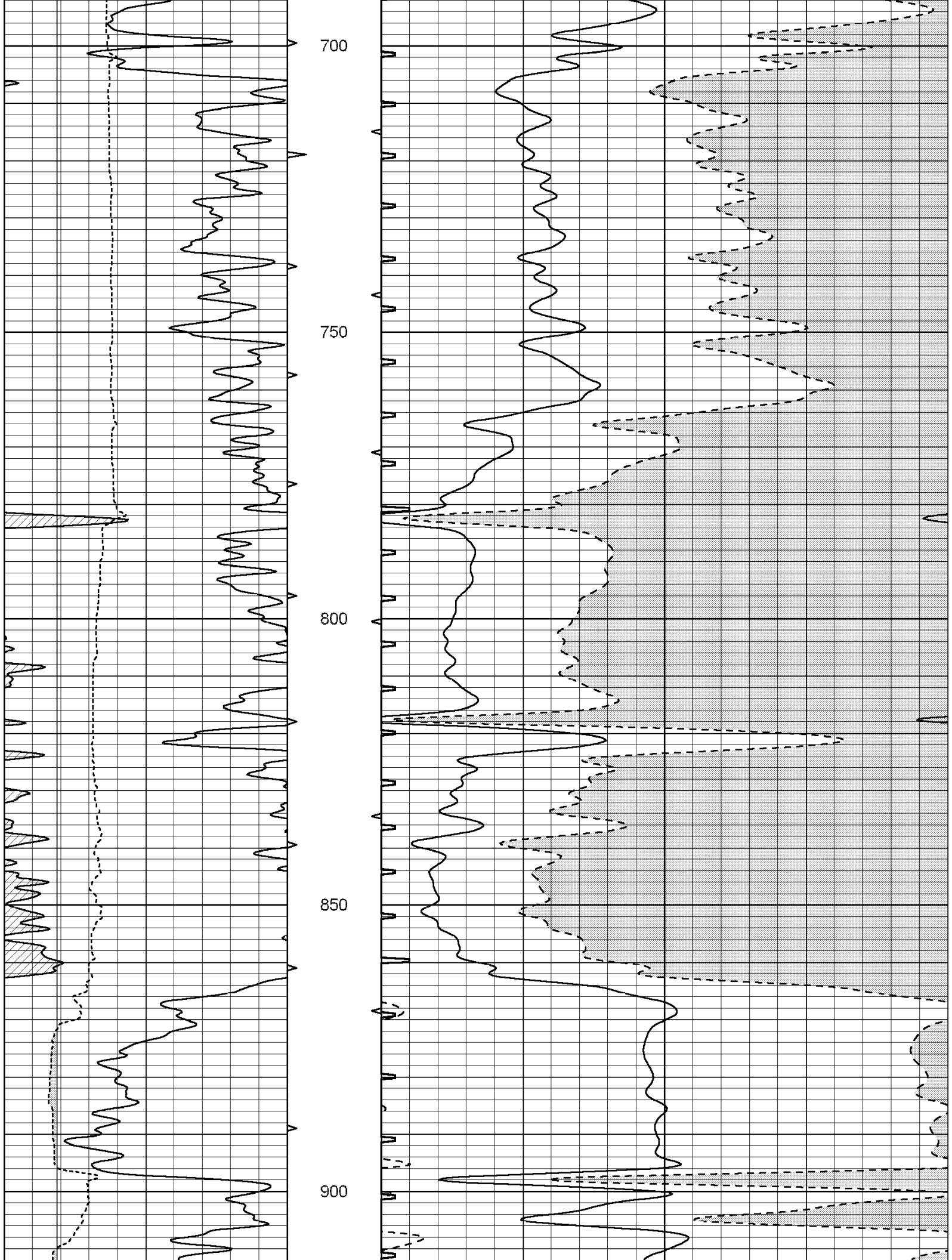
MAIN SECTION

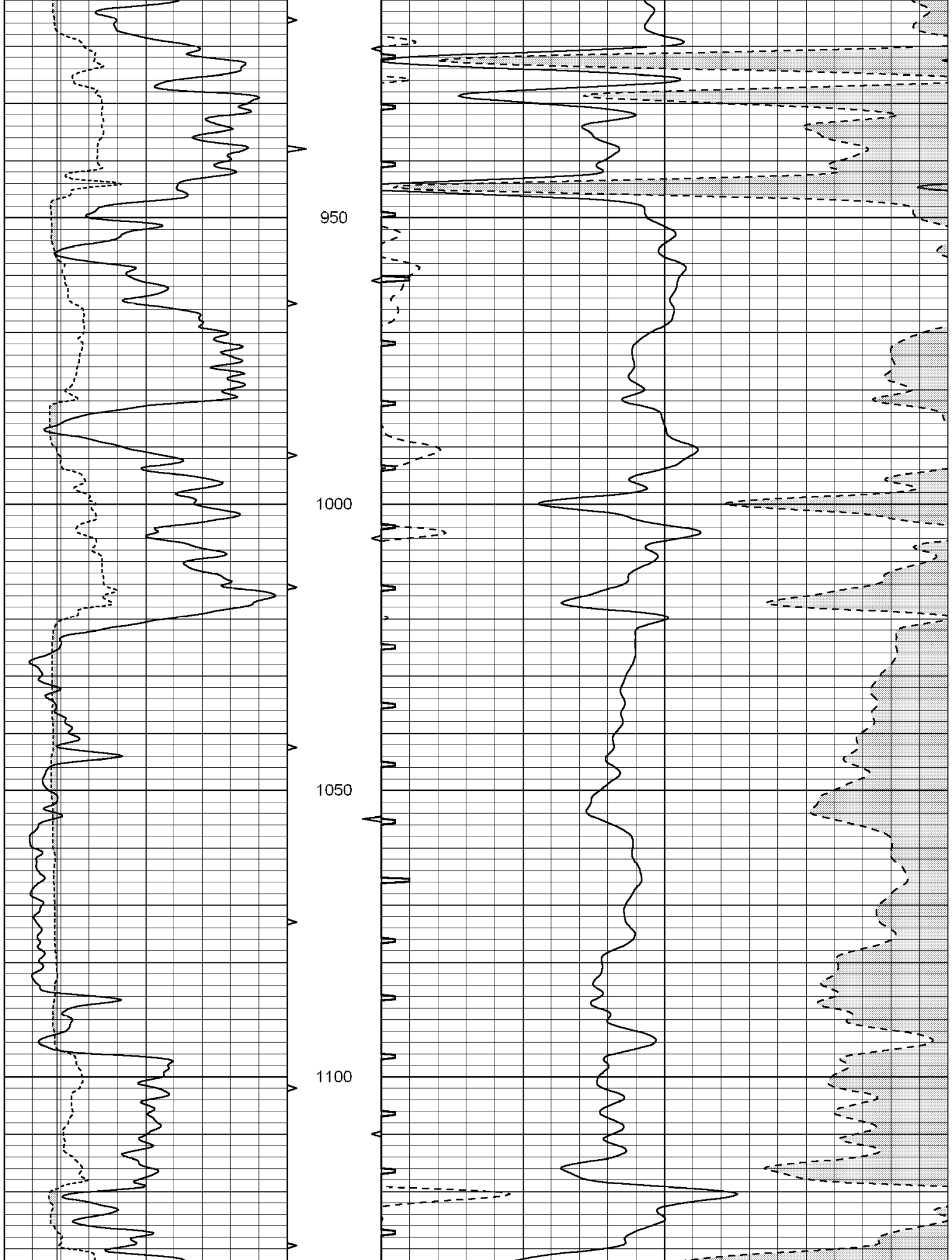
Database File: 004396pe.db
Dataset Pathname: pass7.4
Presentation Format: slt
Dataset Creation: Tue Dec 22 23:28:03 2009
Charted by: Depth in Feet scaled 1:240

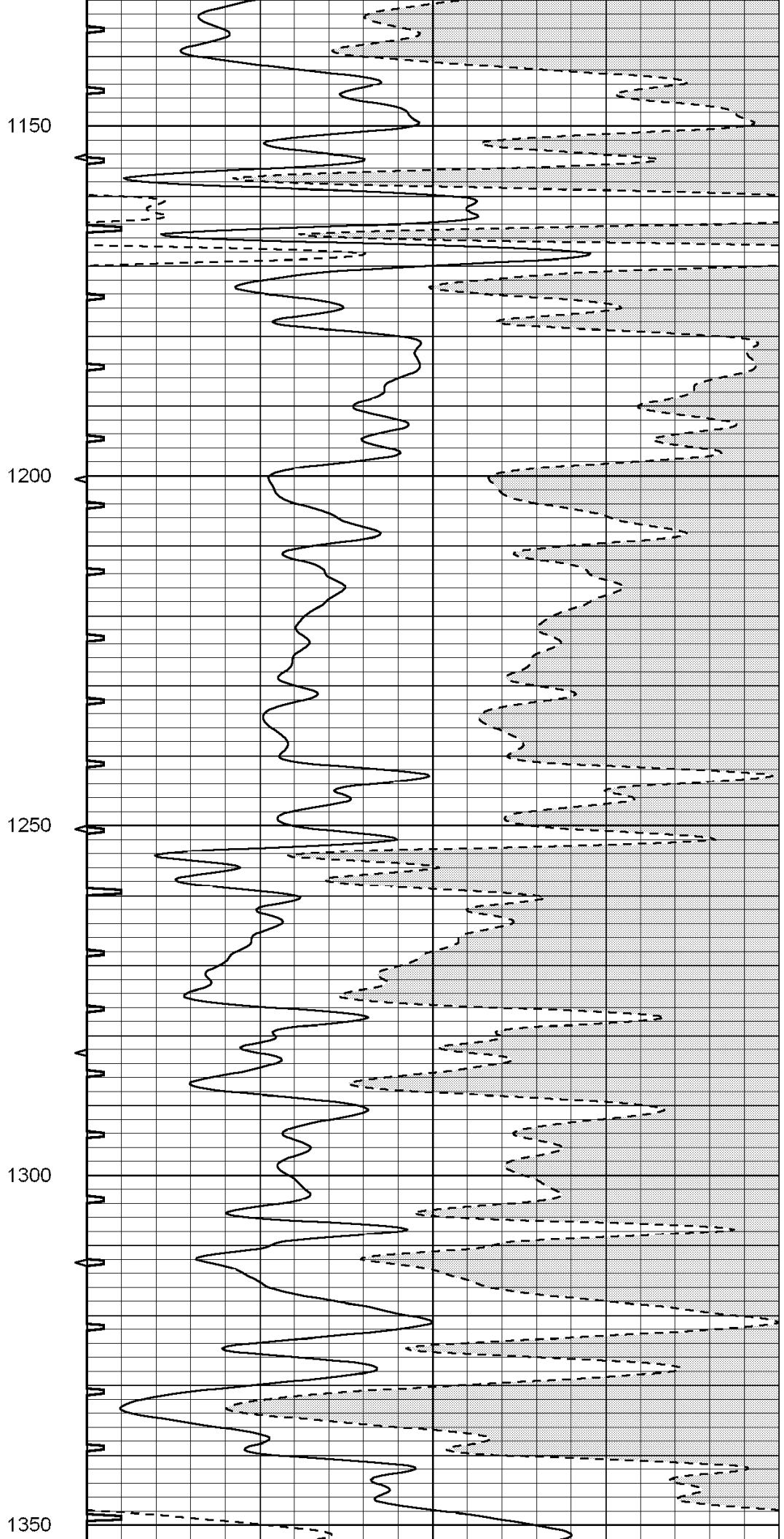
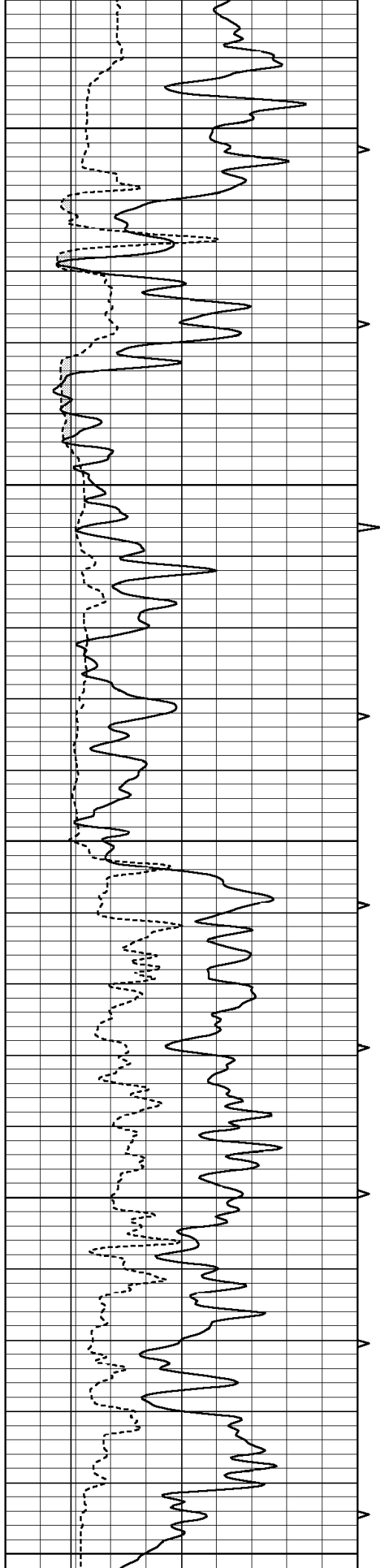
0	GAMMA RAY (GAPI)	150	ABHV	140	DELTA TIME (usec/ft)	40
6	CALIPER (in)	16	10 (ft3) 0	30	SONIC POROSITY (pu)	-10
			TBHV	0	ITT (msec)	20
			0 (ft3) 10			

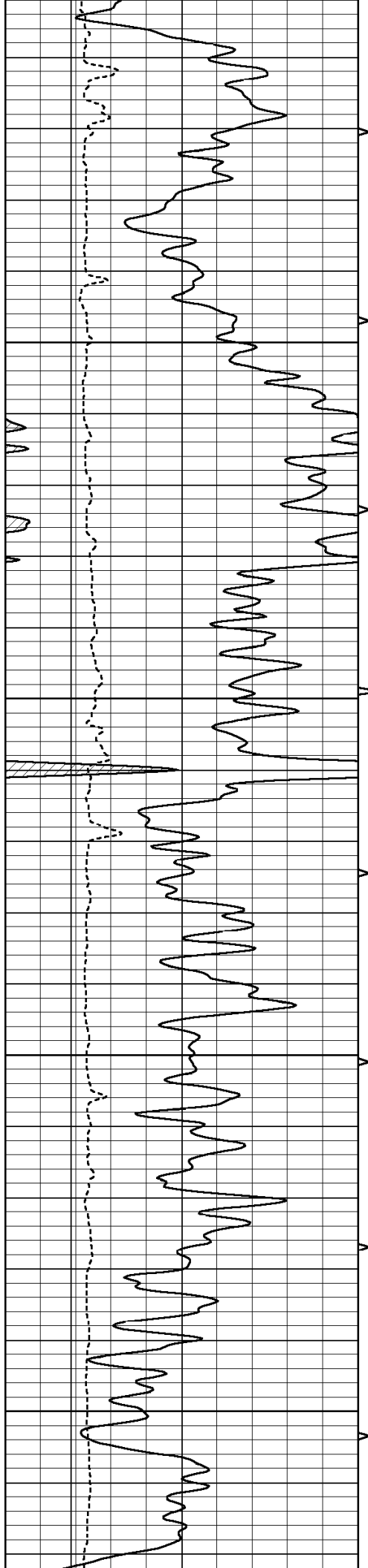










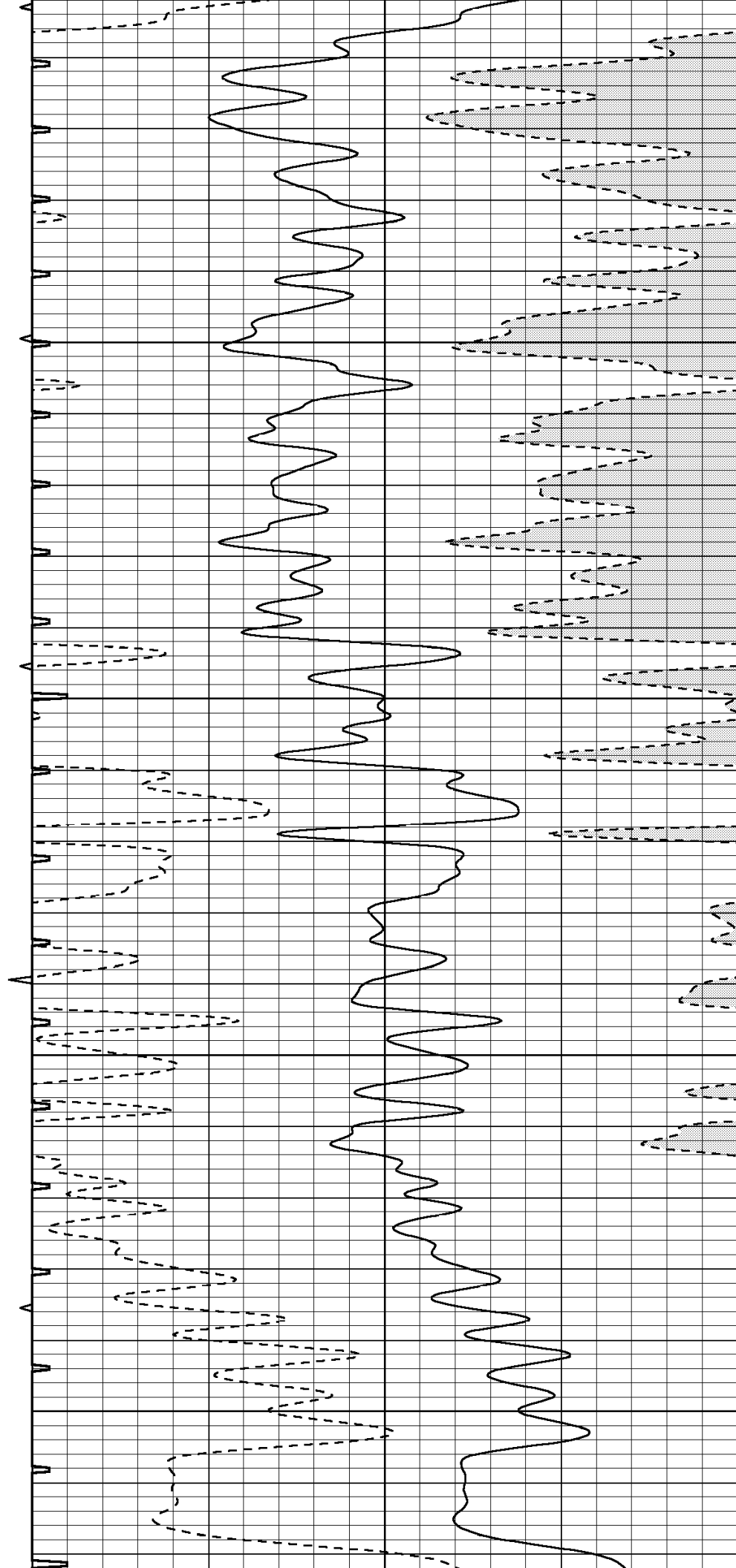


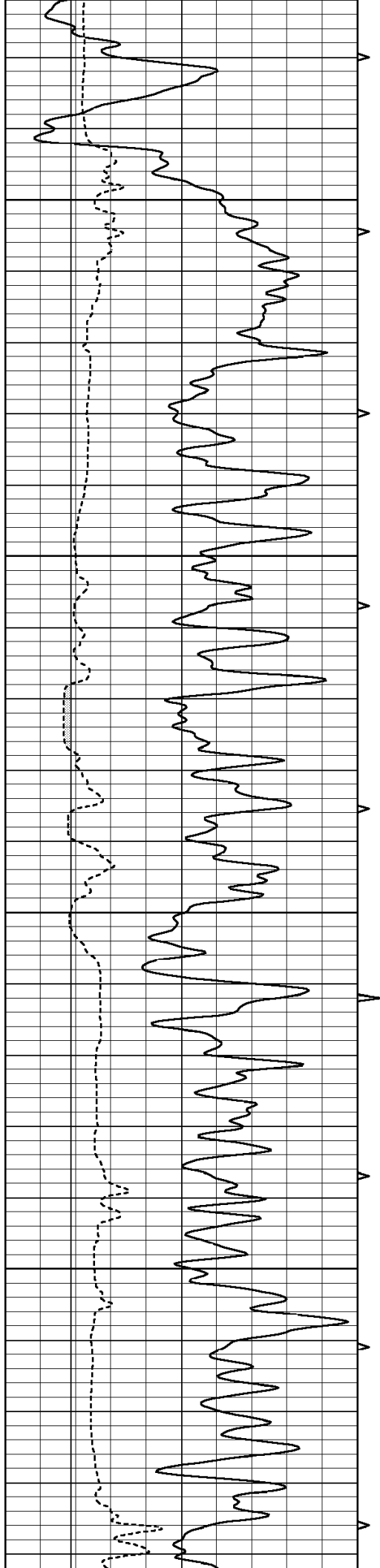
1400

1450

1500

1550



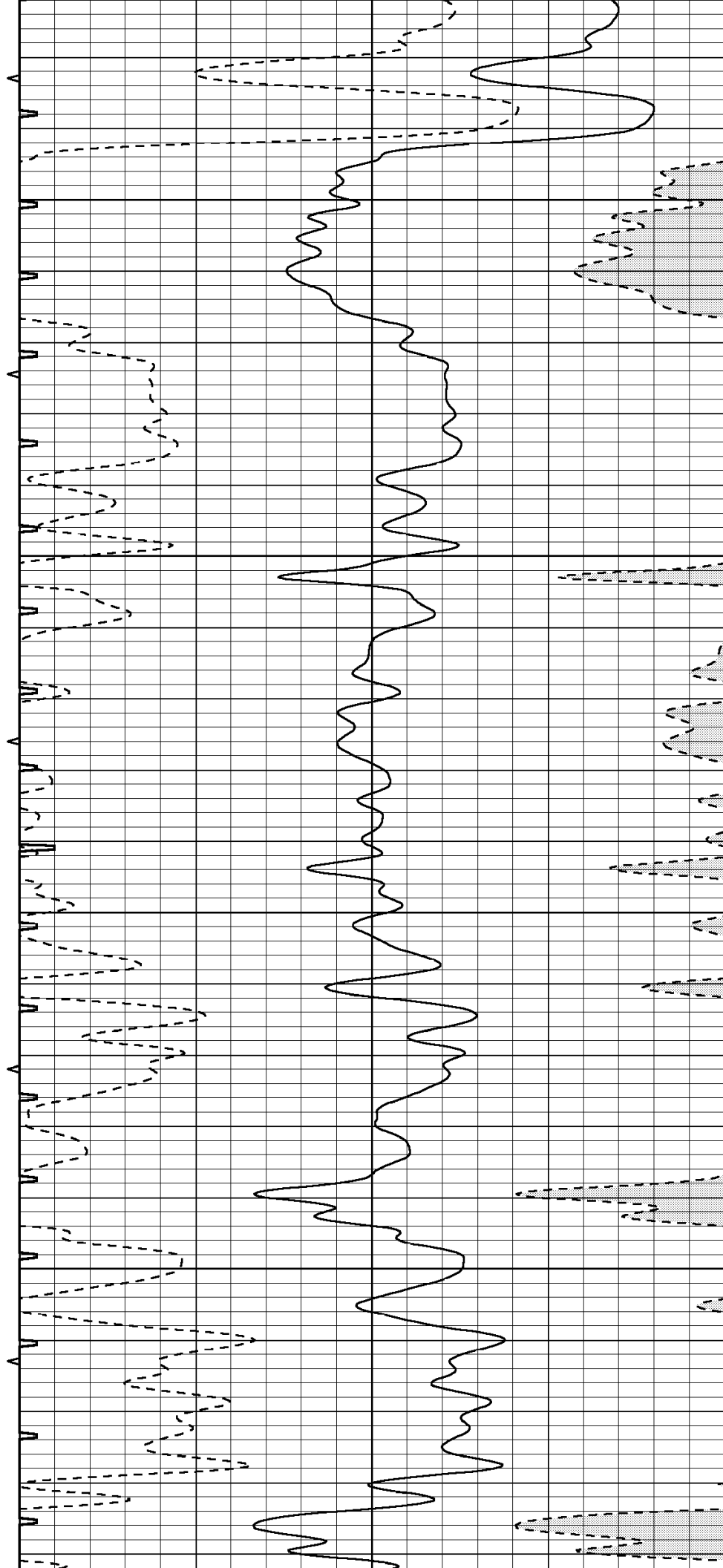


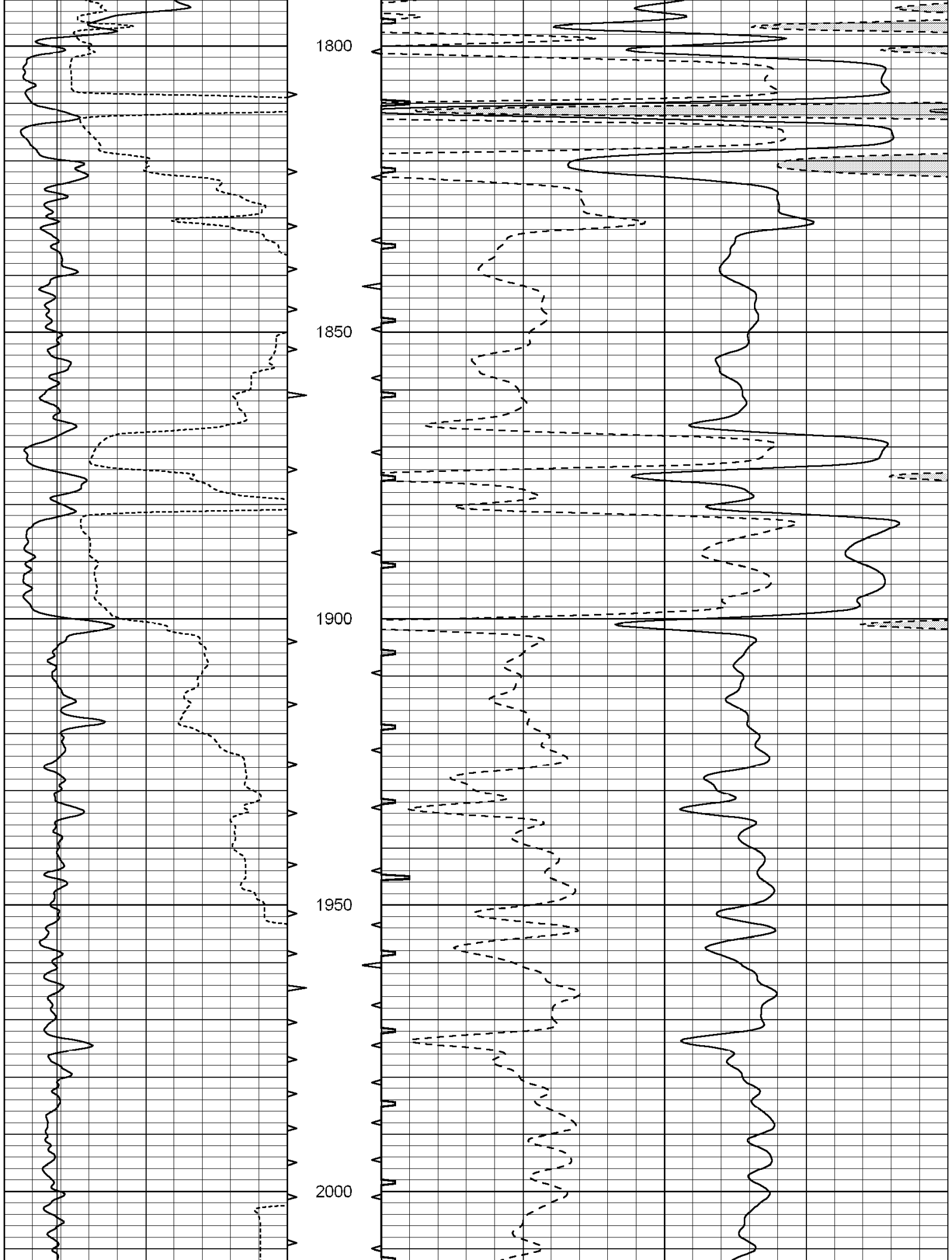
1600

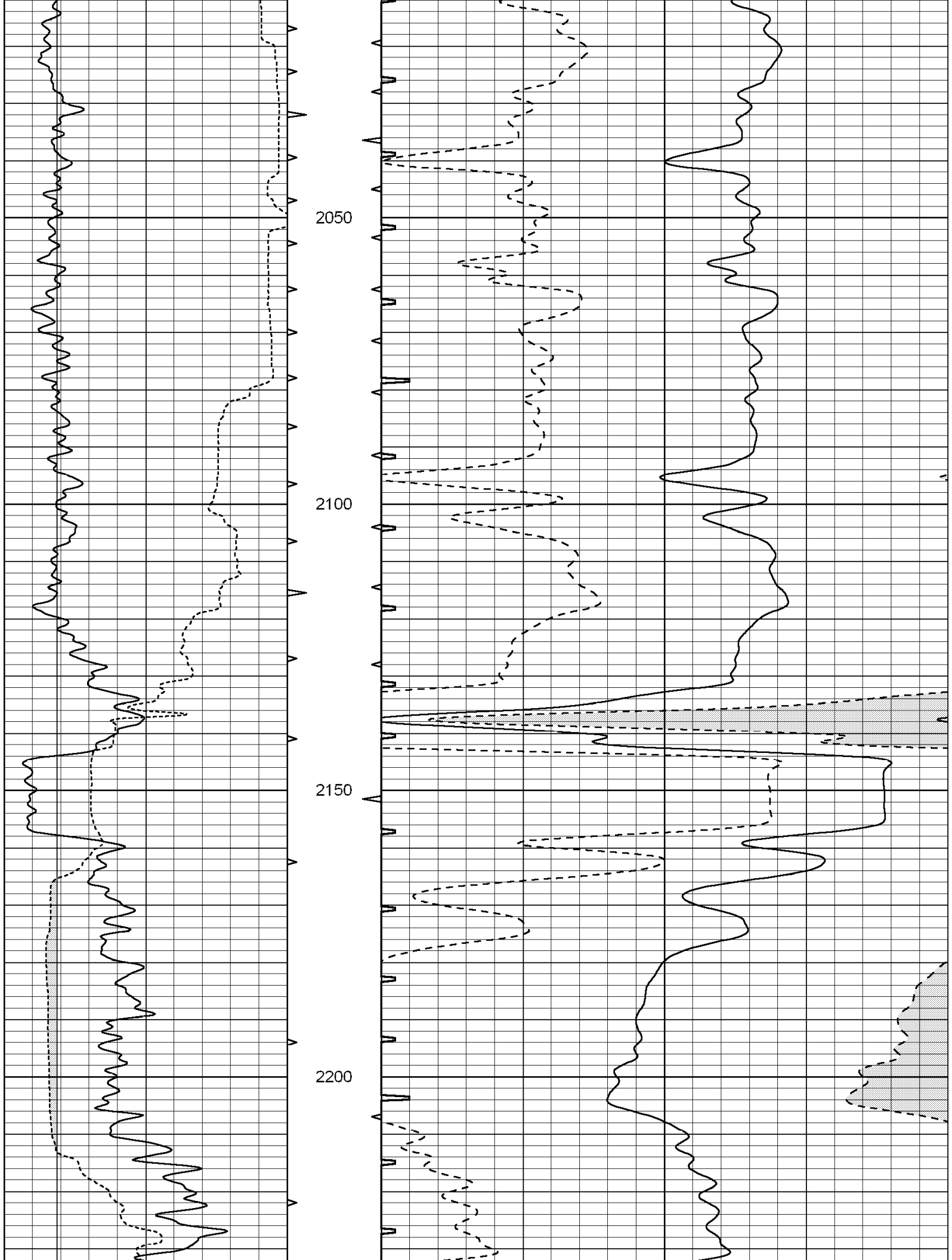
1650

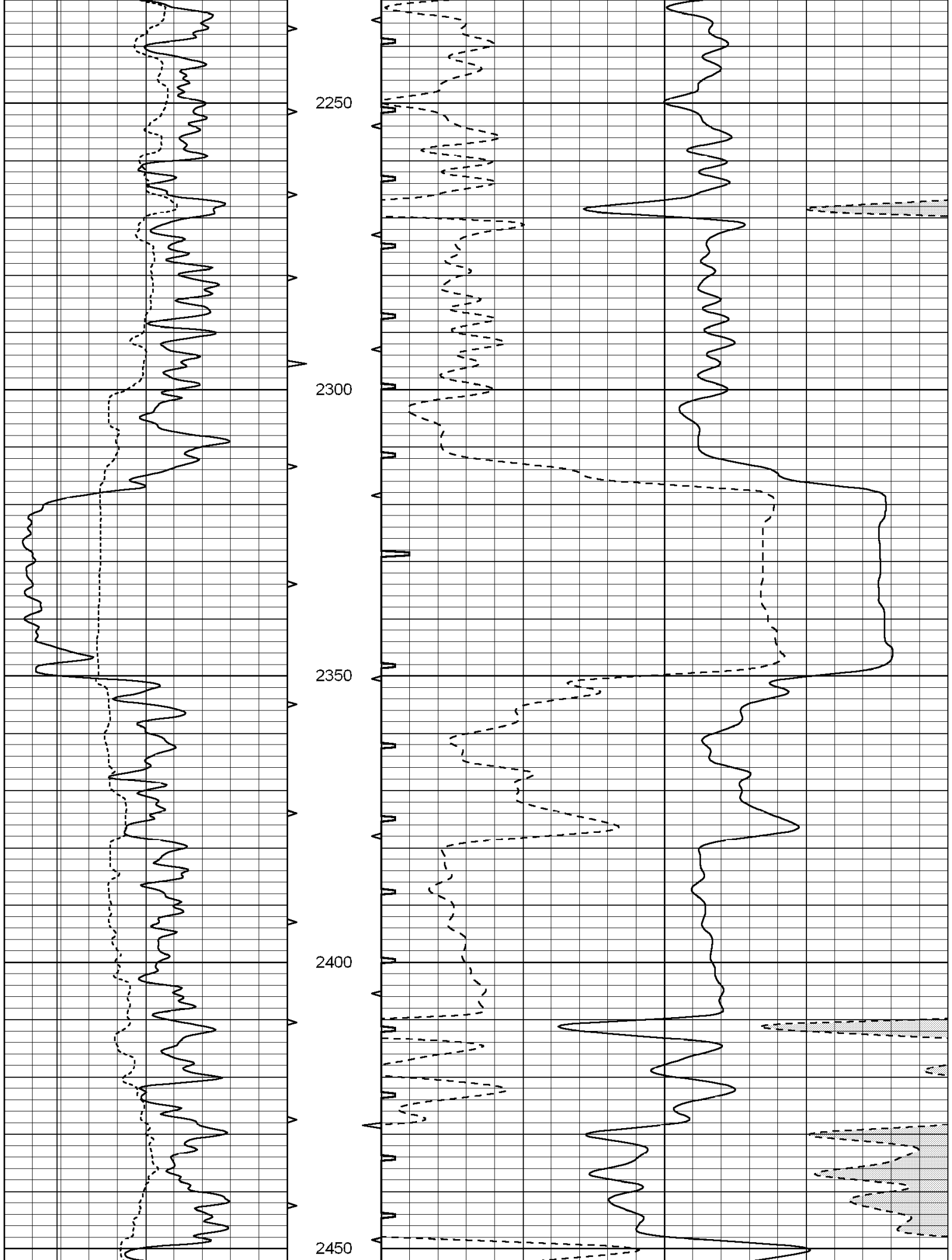
1700

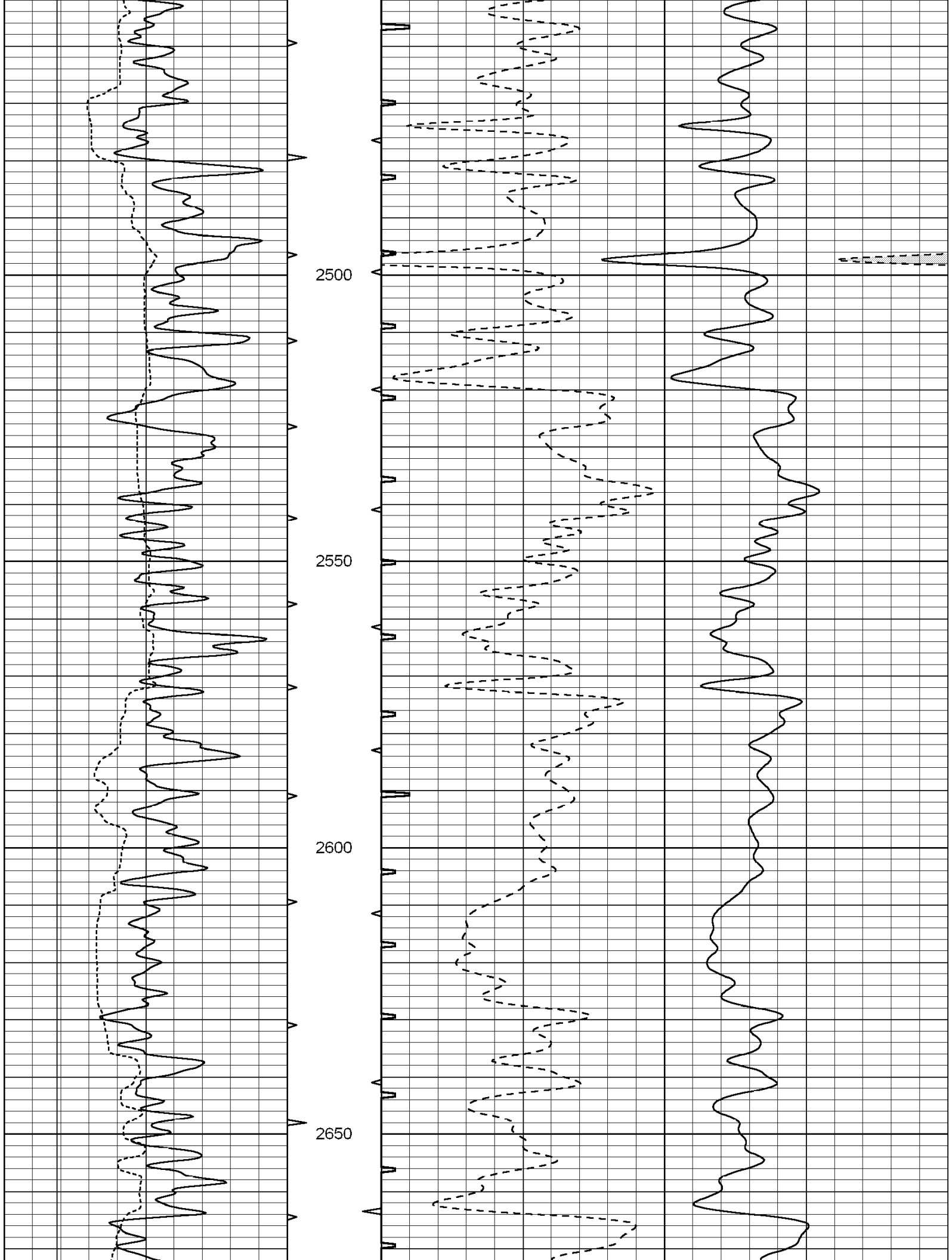
1750

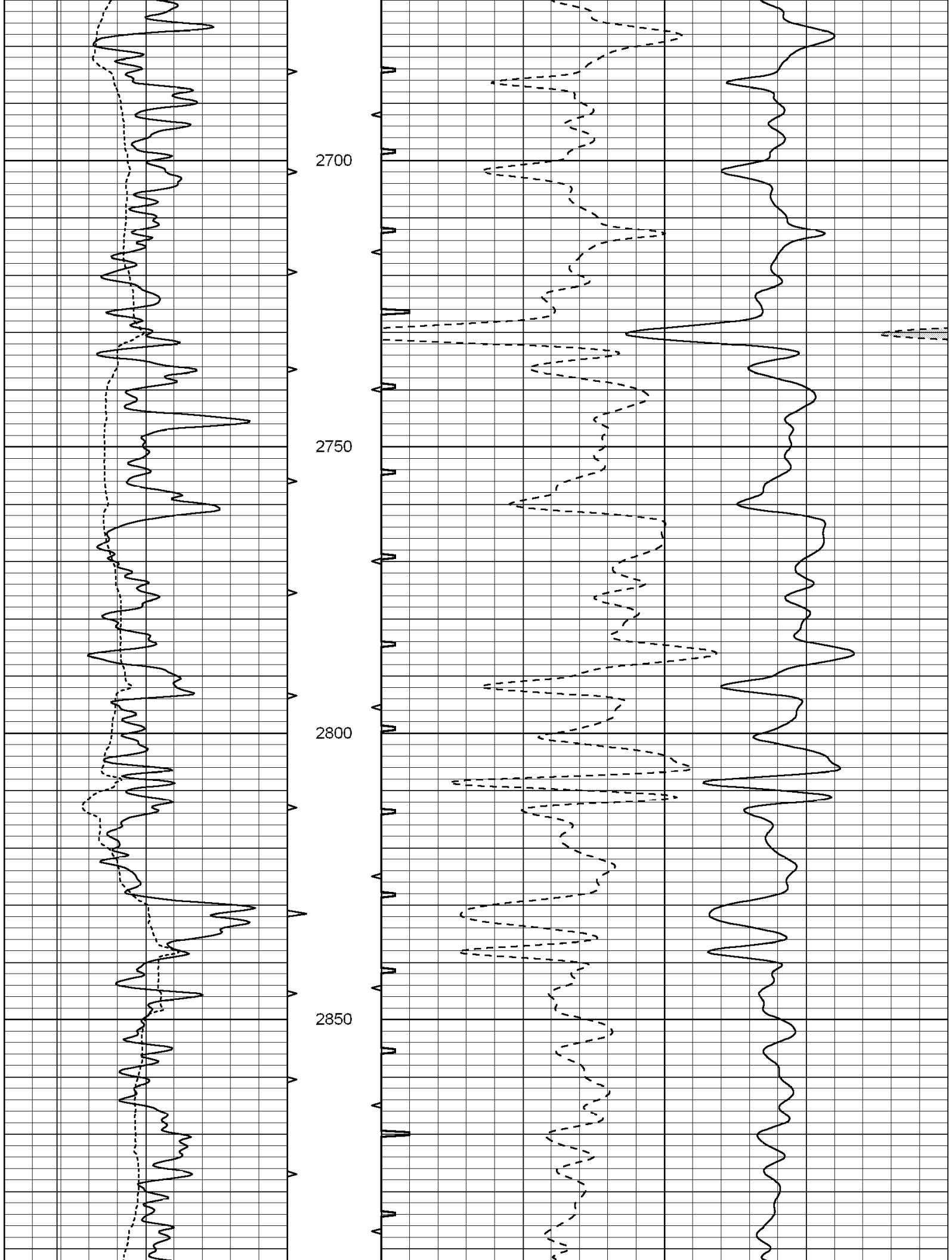


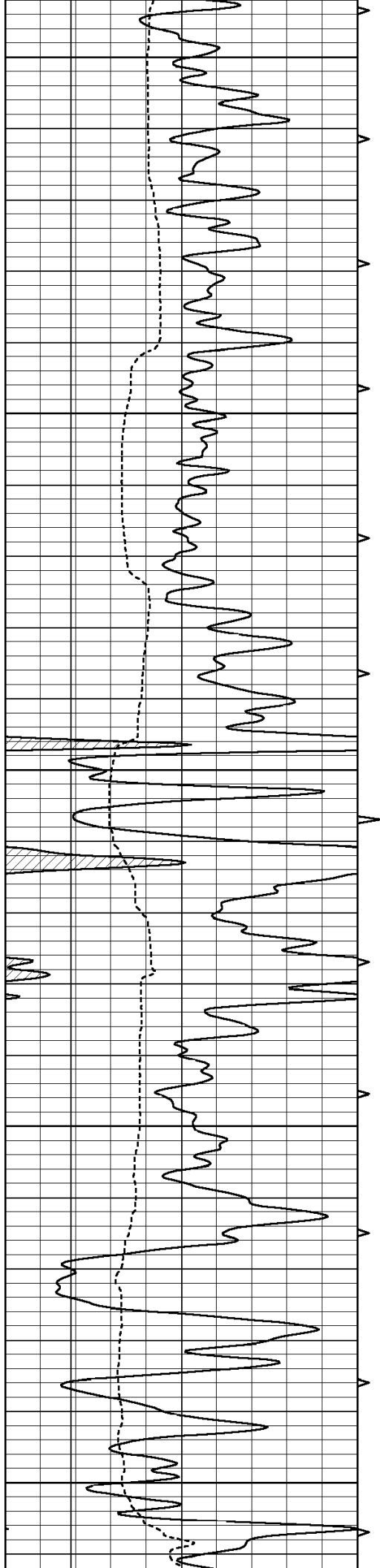












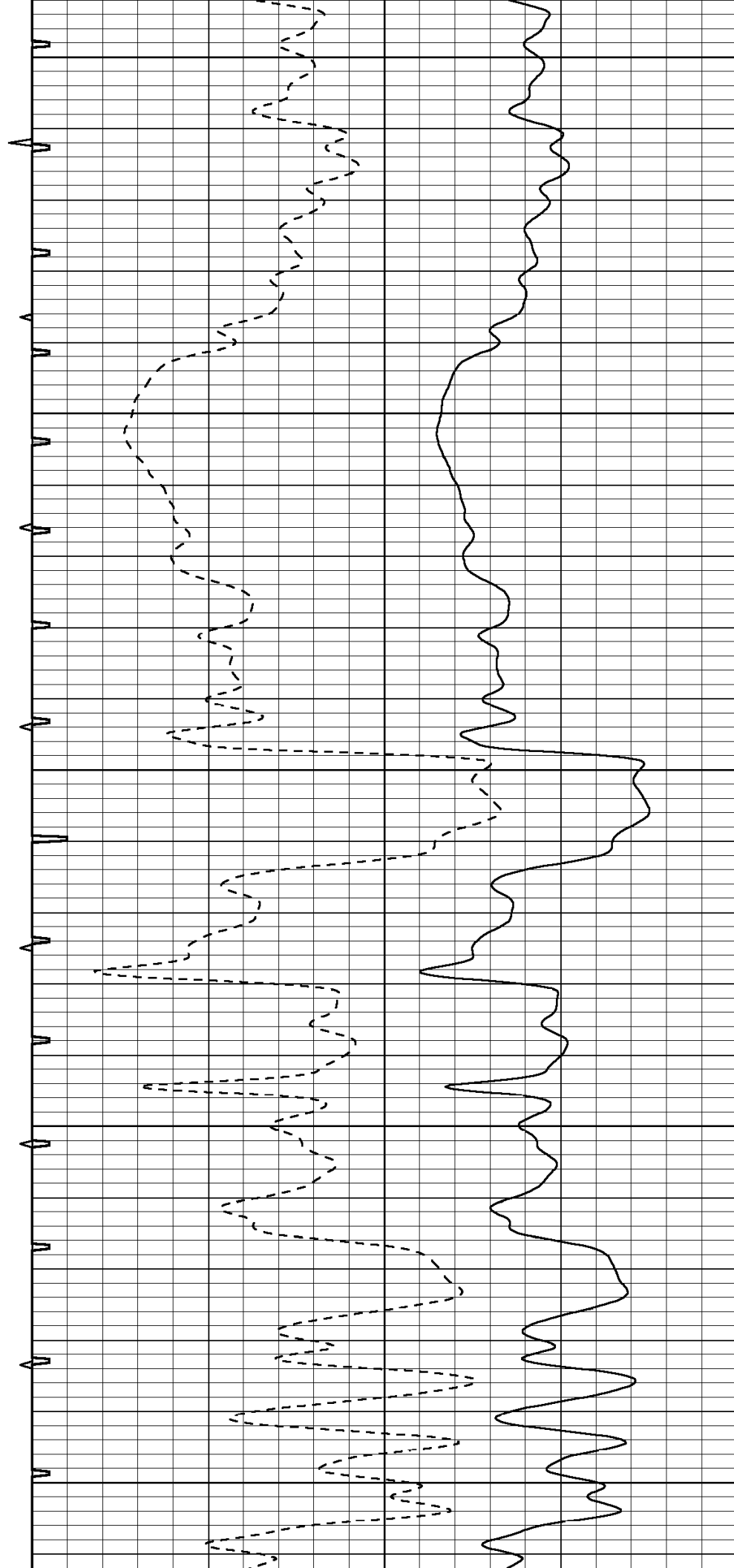
2900

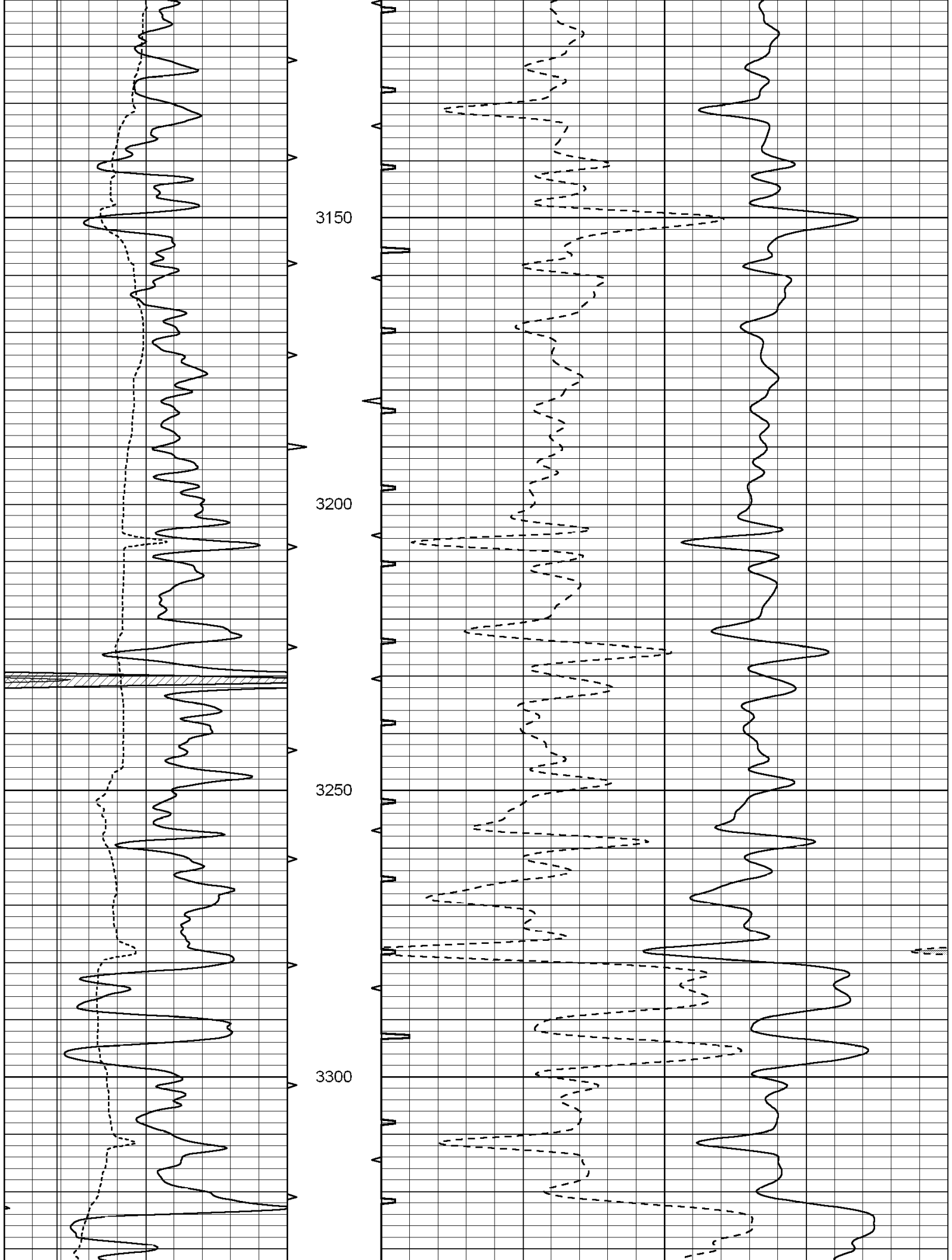
2950

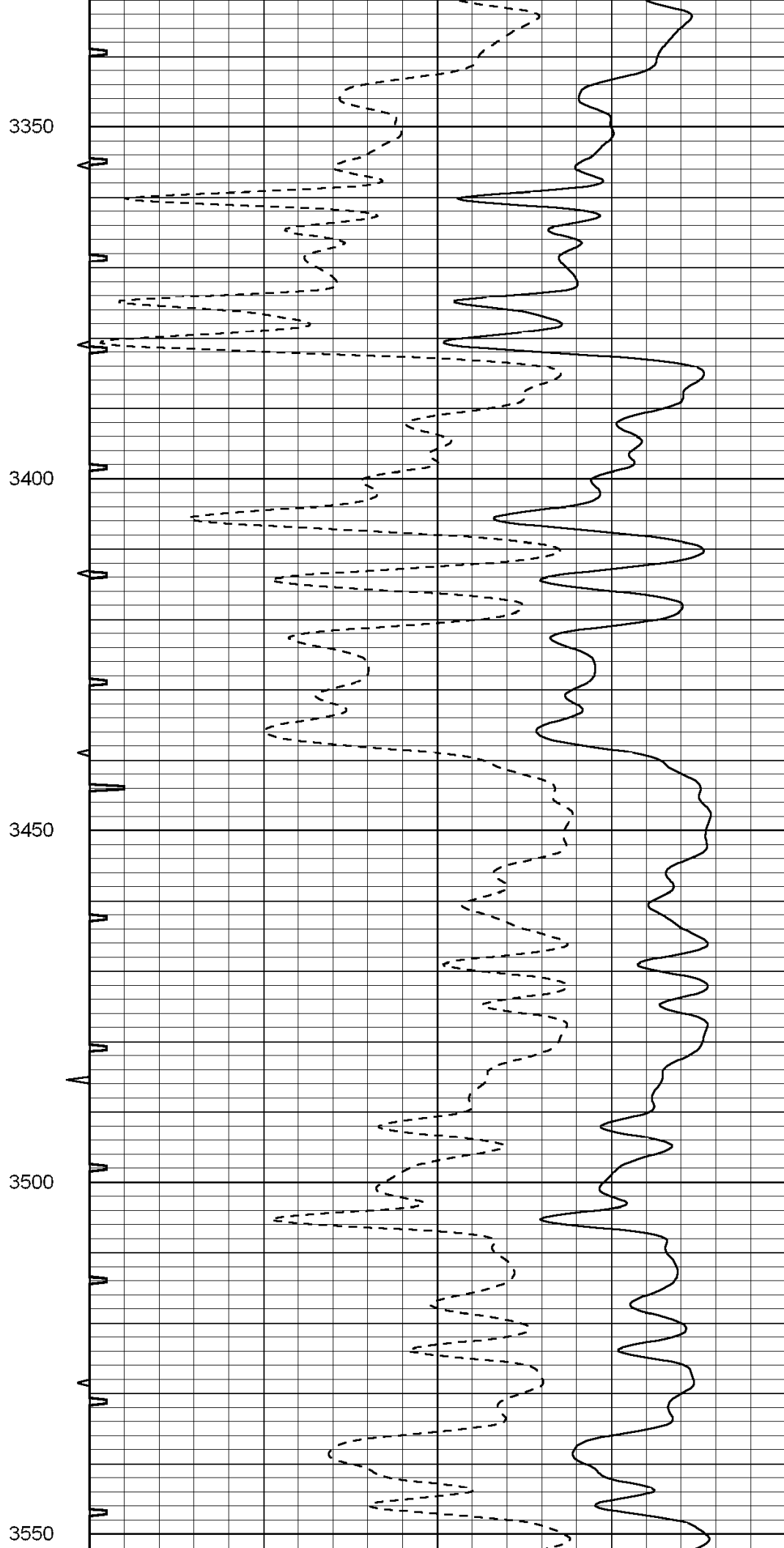
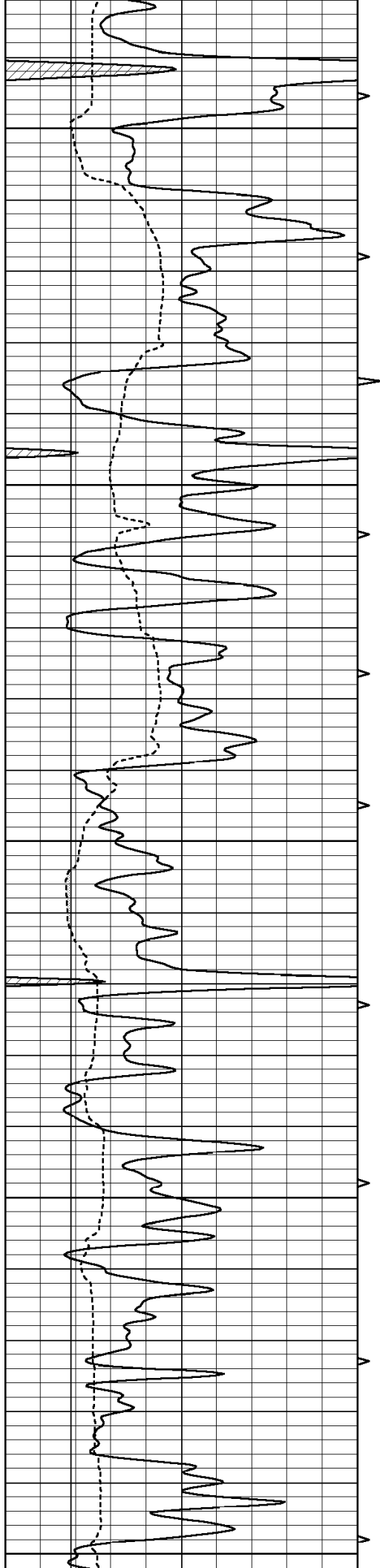
3000

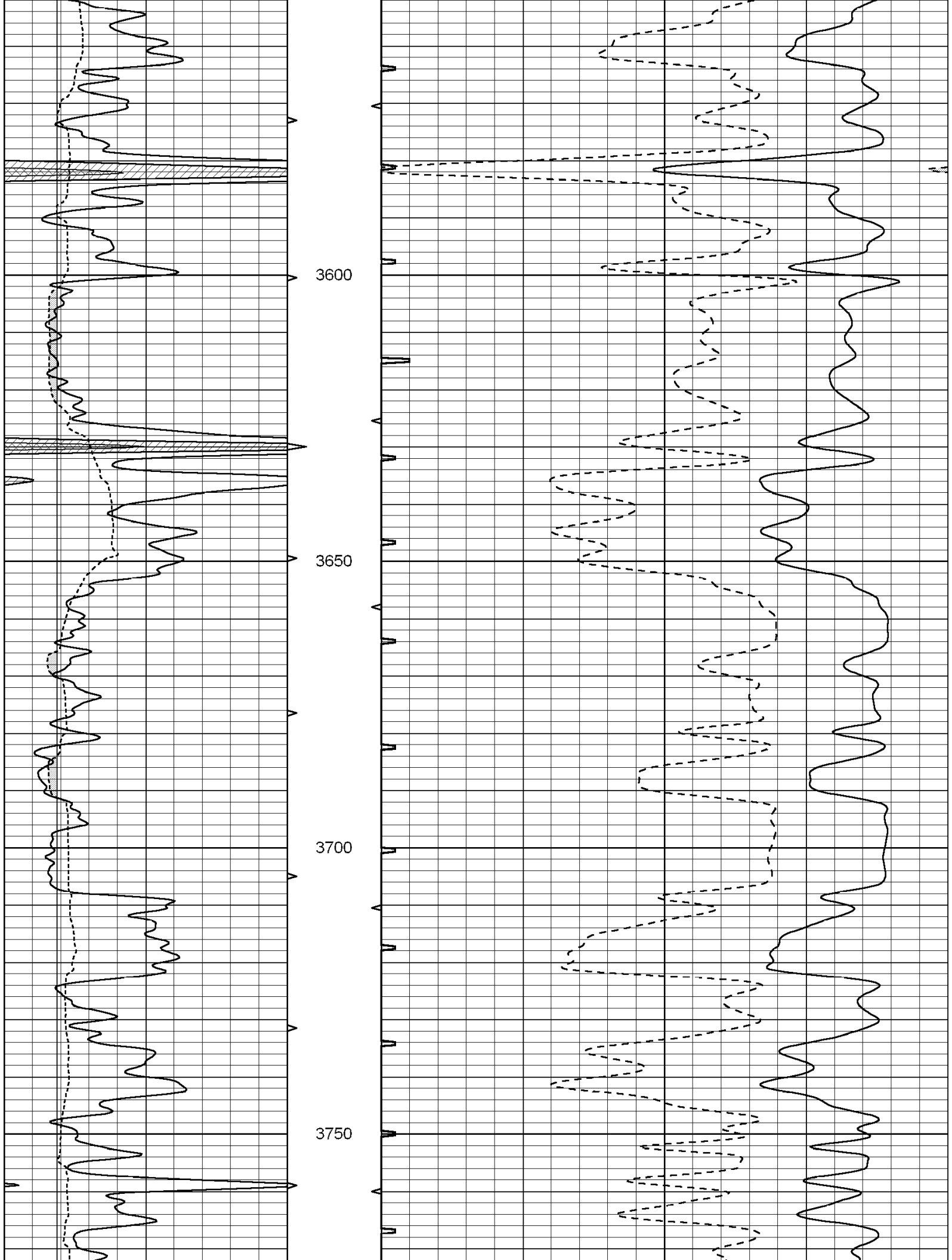
3050

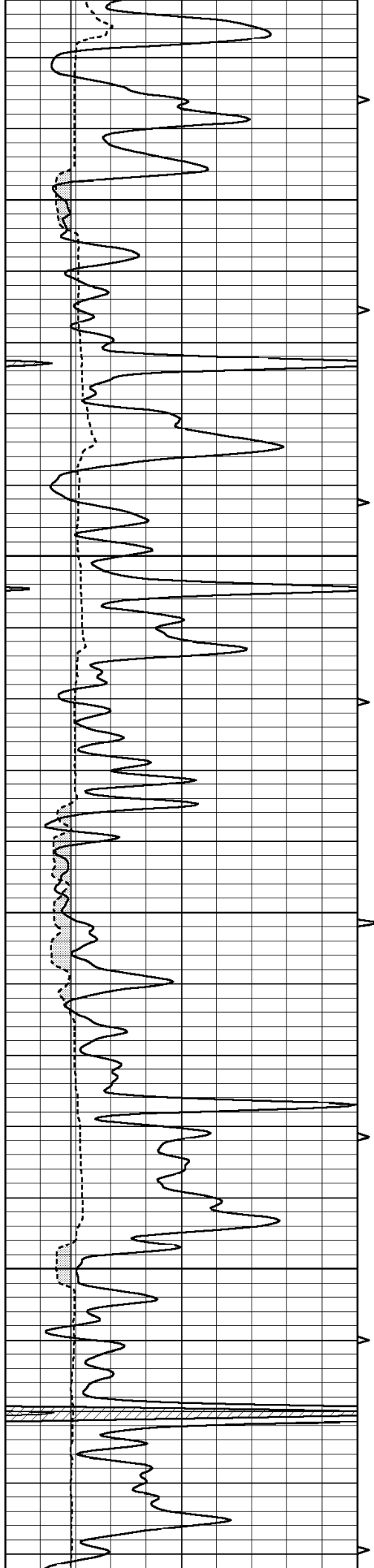
3100









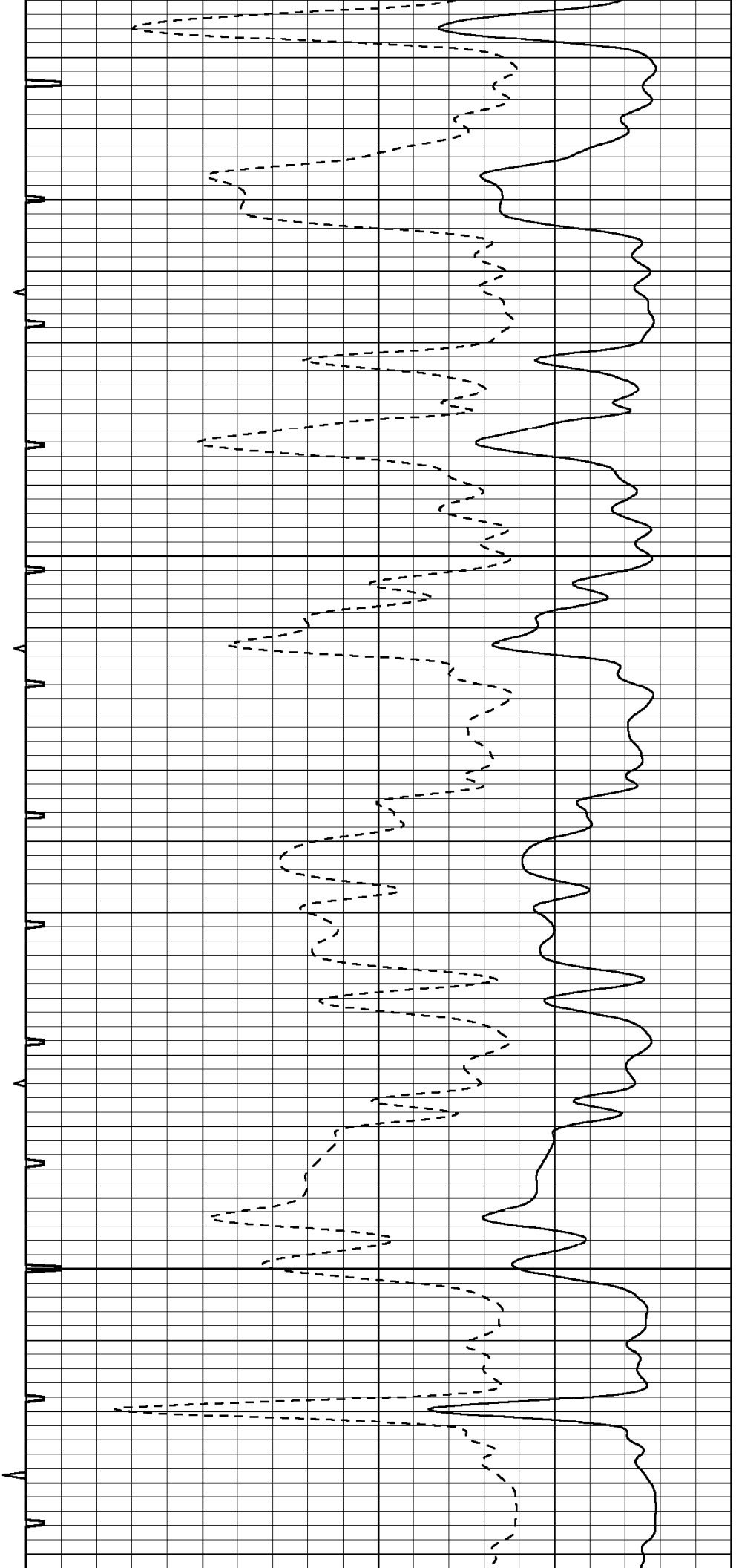


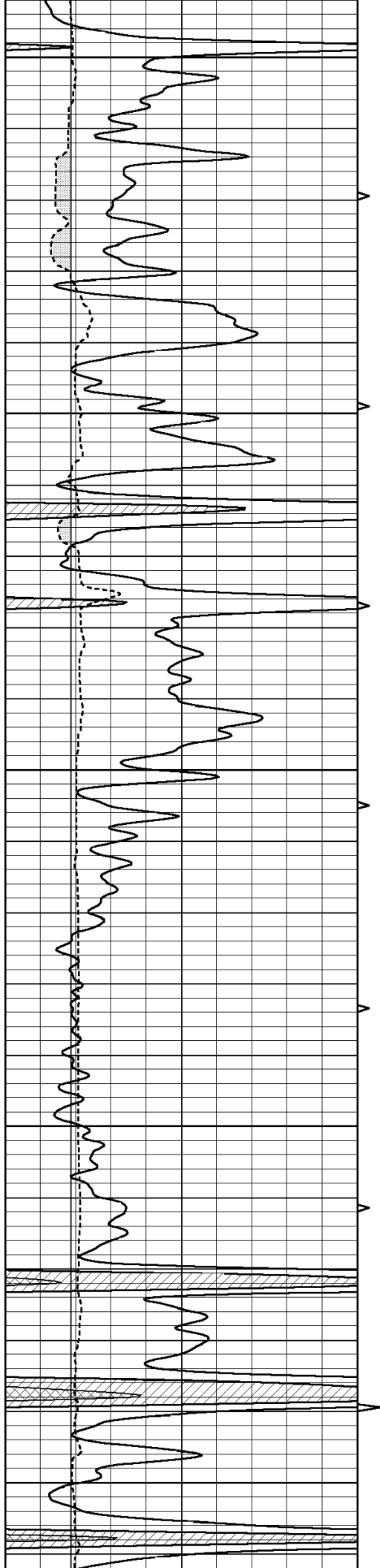
3800

3850

3900

3950





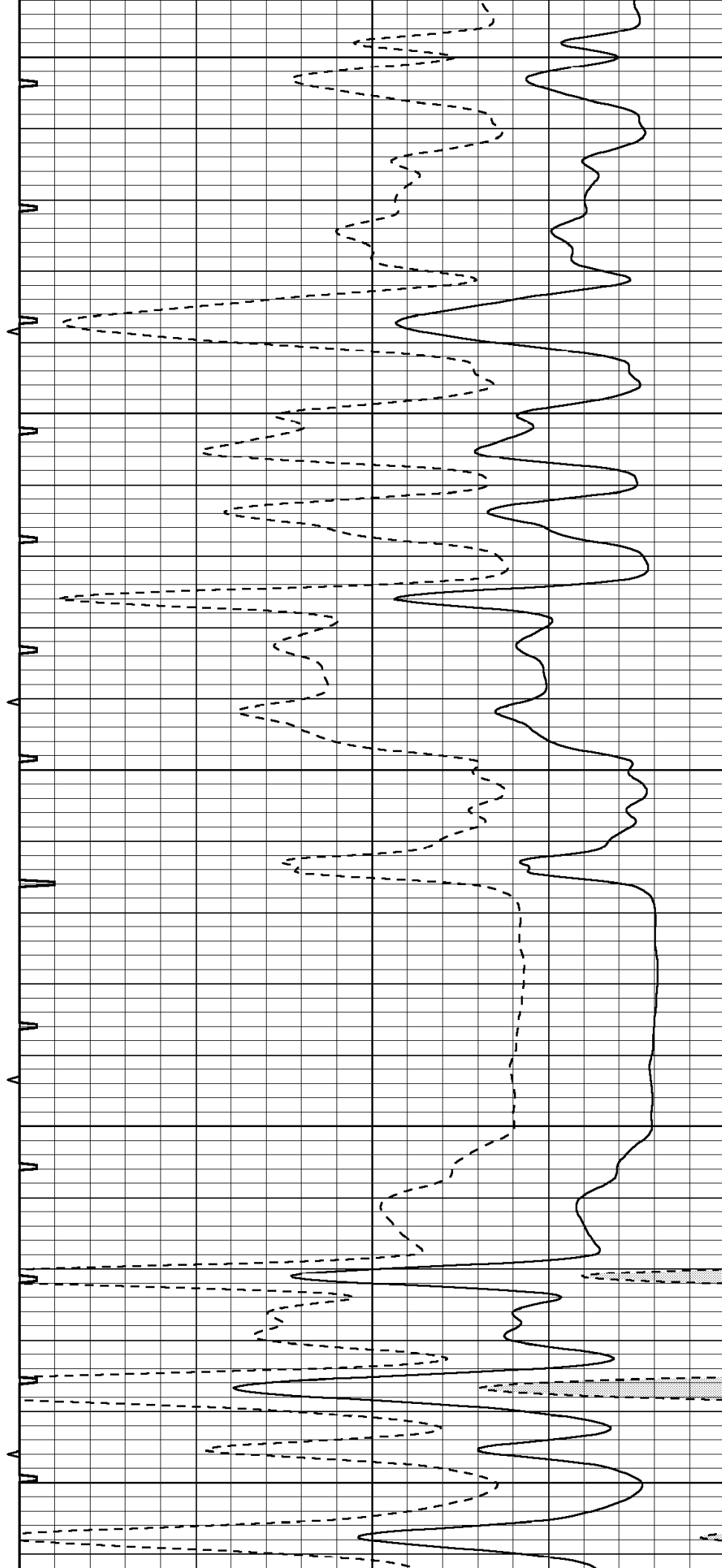
4000

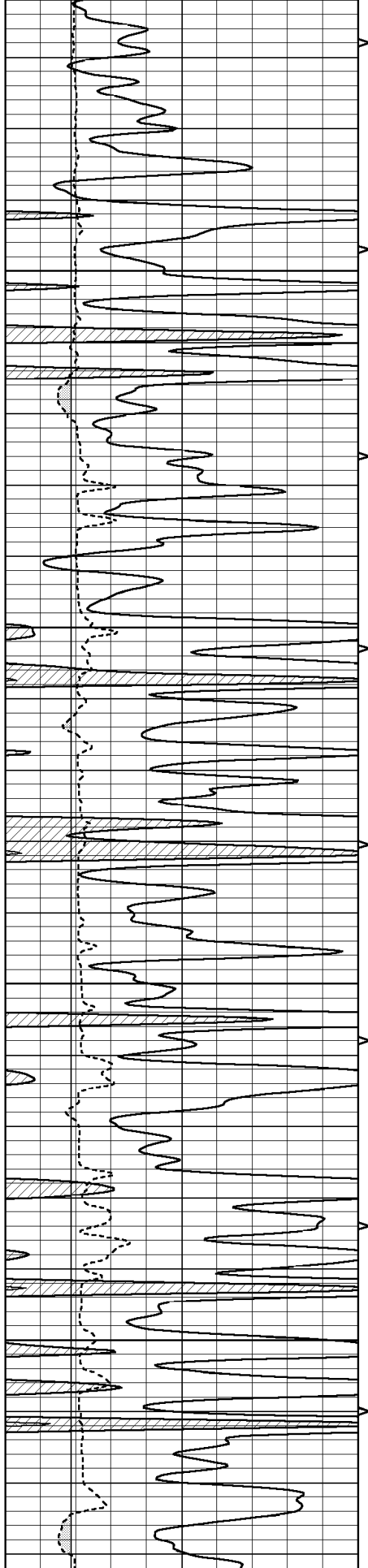
4050

4100

4150

4200



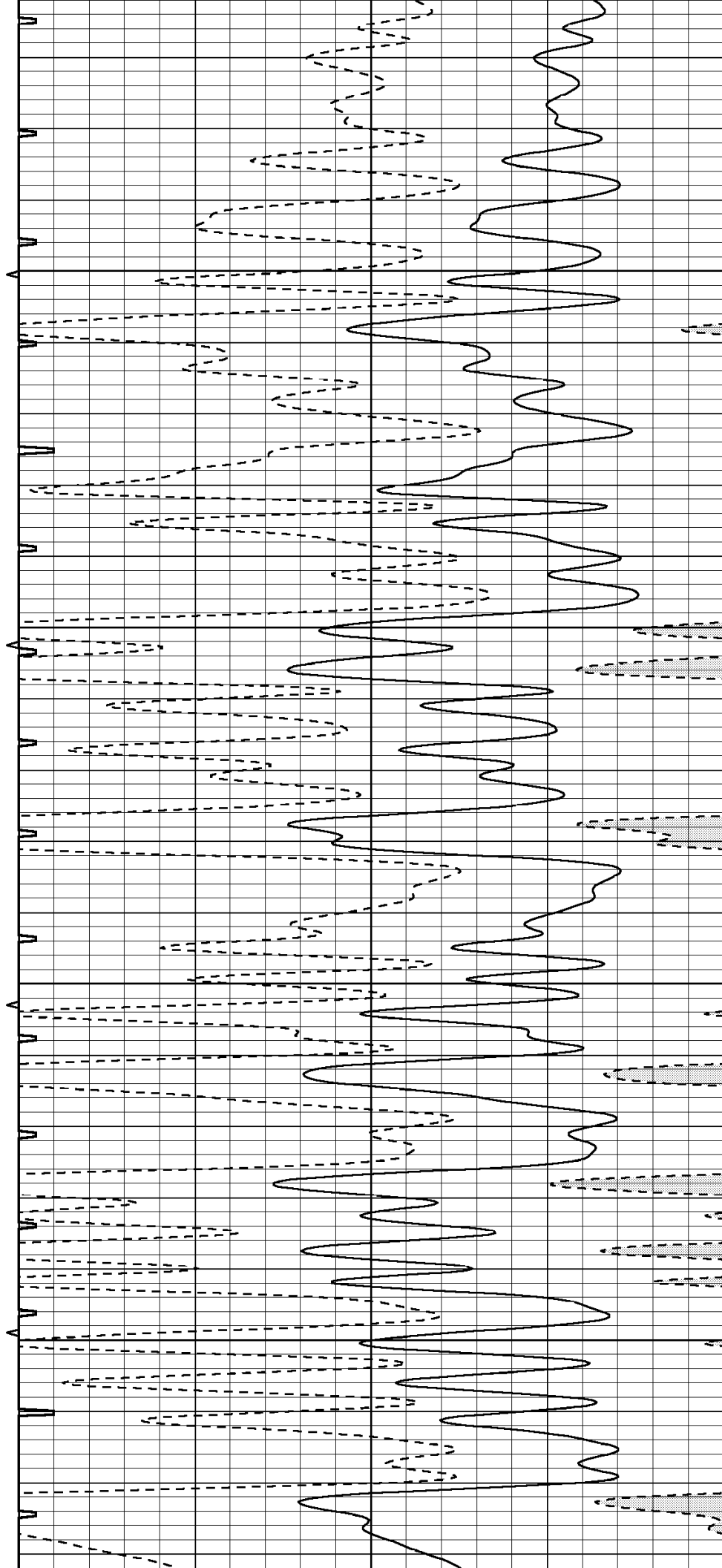


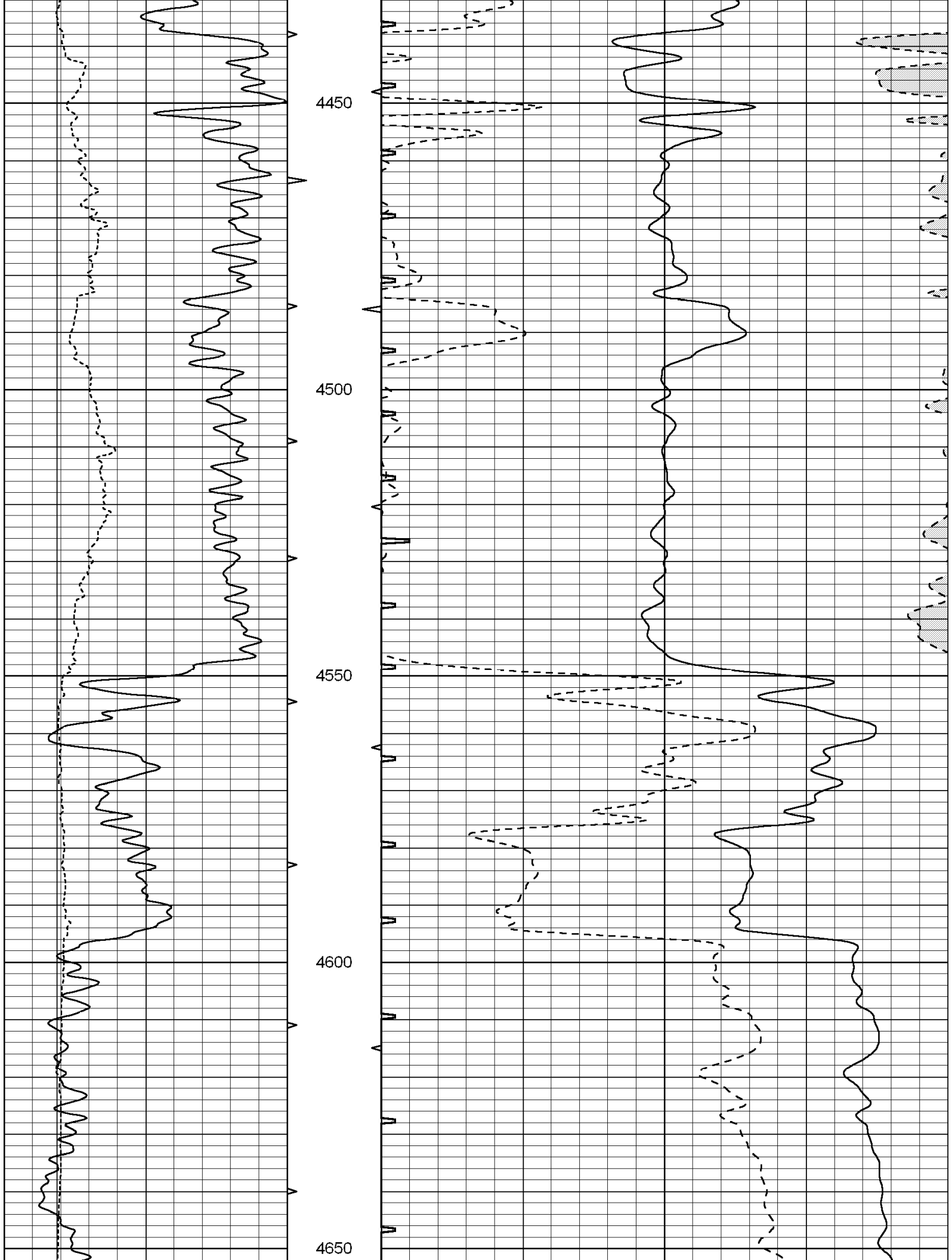
4250

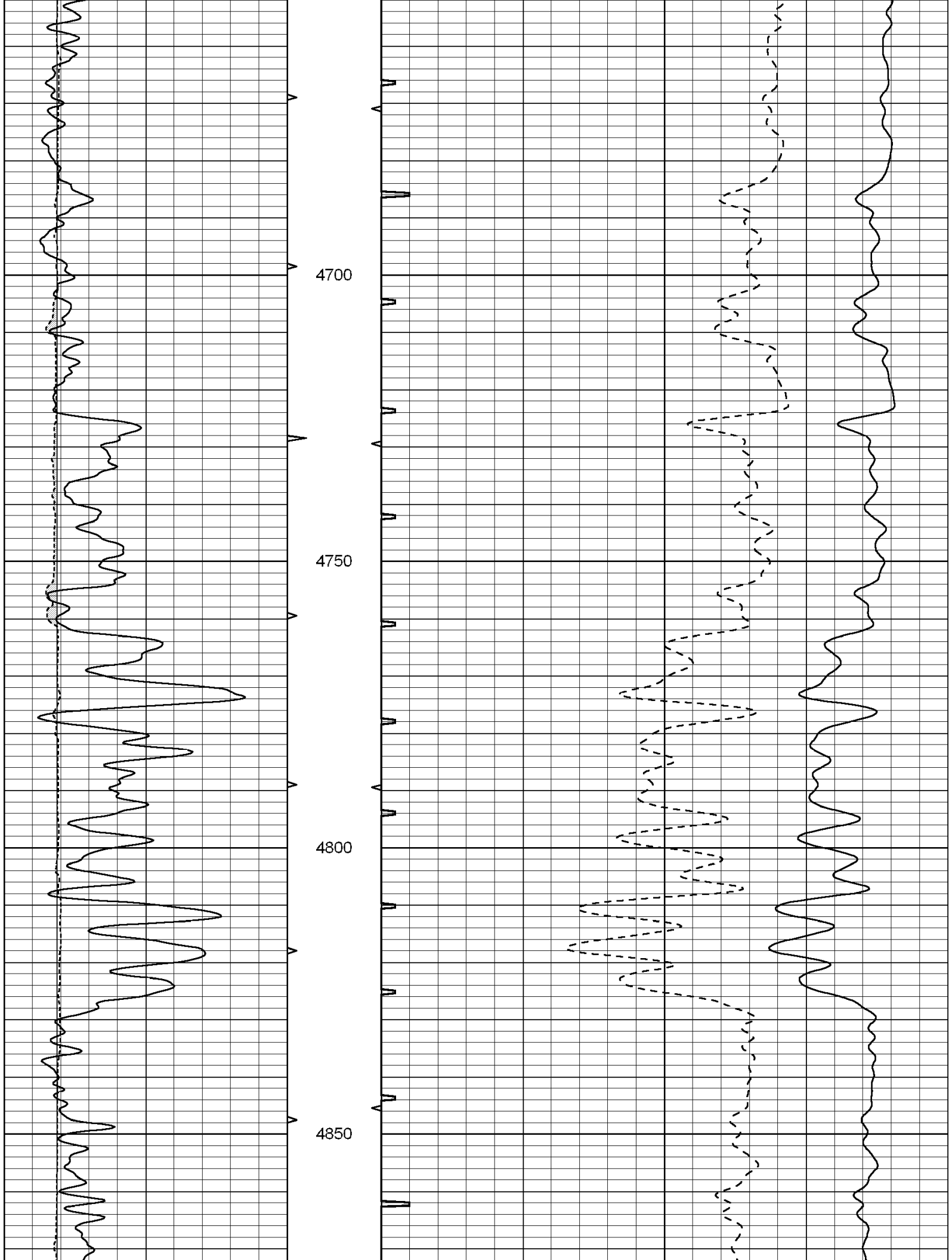
4300

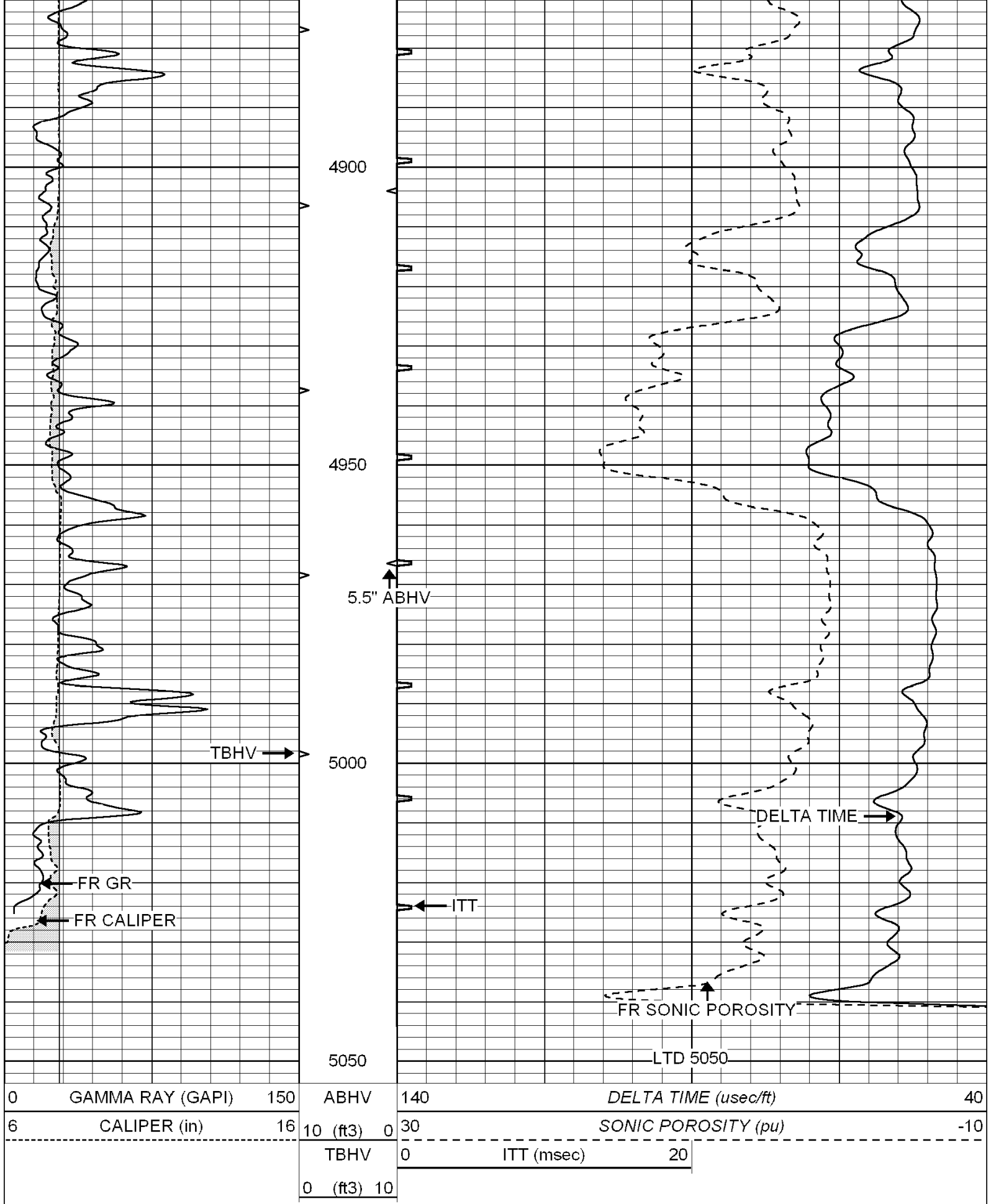
4350

4400









SUPERIOR
Hays

REPEAT SECTION

Database File: 004396pe.db
Dataset Pathname: pass6.1
Presentation Format: slt
Dataset Creation: Tue Dec 22 22:05:23 2009
Charted by: Depth in Feet scaled 1:240

0	GAMMA RAY (GAPI)	150	ABHV	140	DELTA TIME (usec/ft)	40
6	CALIPER (in)	16	10 (ft3) 0	30	SONIC POROSITY (pu)	-10
			TBHV	0	ITT (msec)	20
			0 (ft3) 10			

