

[illegible]

All interpretations of log data are opinions based on inferences from electrical or other measurements. We do not guarantee the accuracy or correctness of any interpretation or

recommendation and we shall not be liable or responsible for any loss, cost, damages or expenses incurred or sustained by anyone resulting from any interpretation or recommendation made by any of our employees or agents.

COMPANY FRAM OPERATING LLC

WELL SEMINOE 32-2-J

FIELD WHITEWATER

COUNTY MESA

STATE COLORADO



Weatherford®

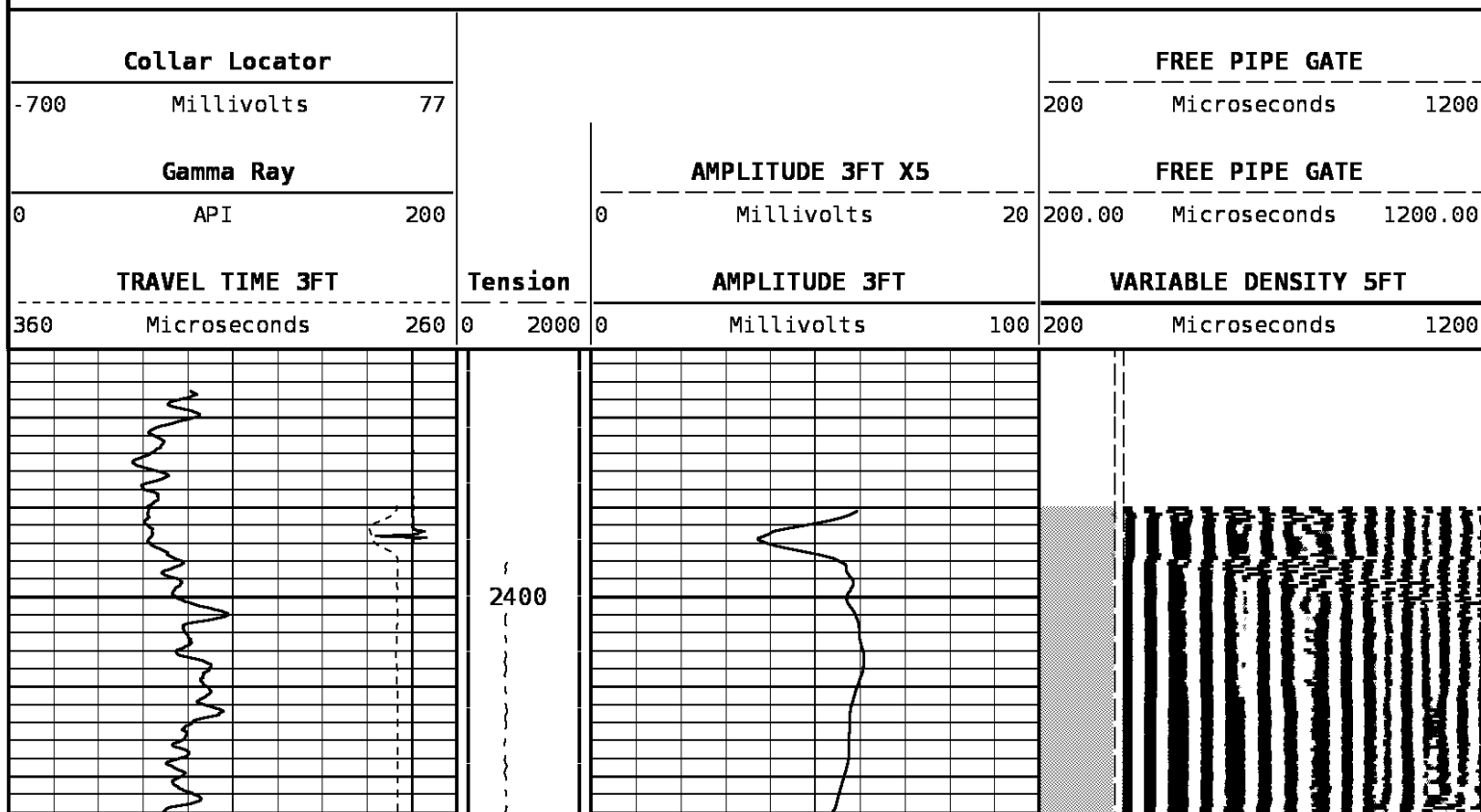
DEPTH SCALE: 5":100'

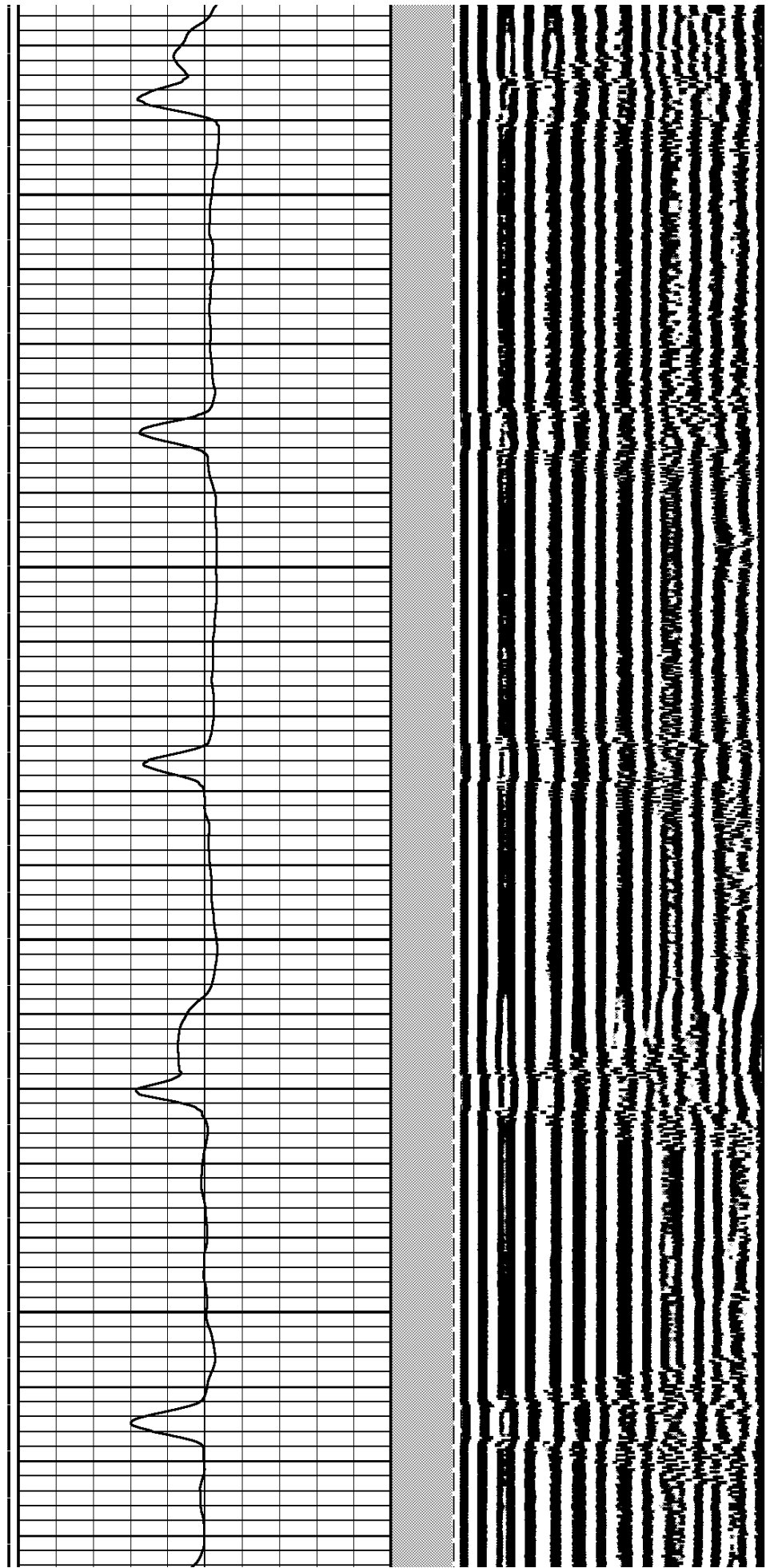
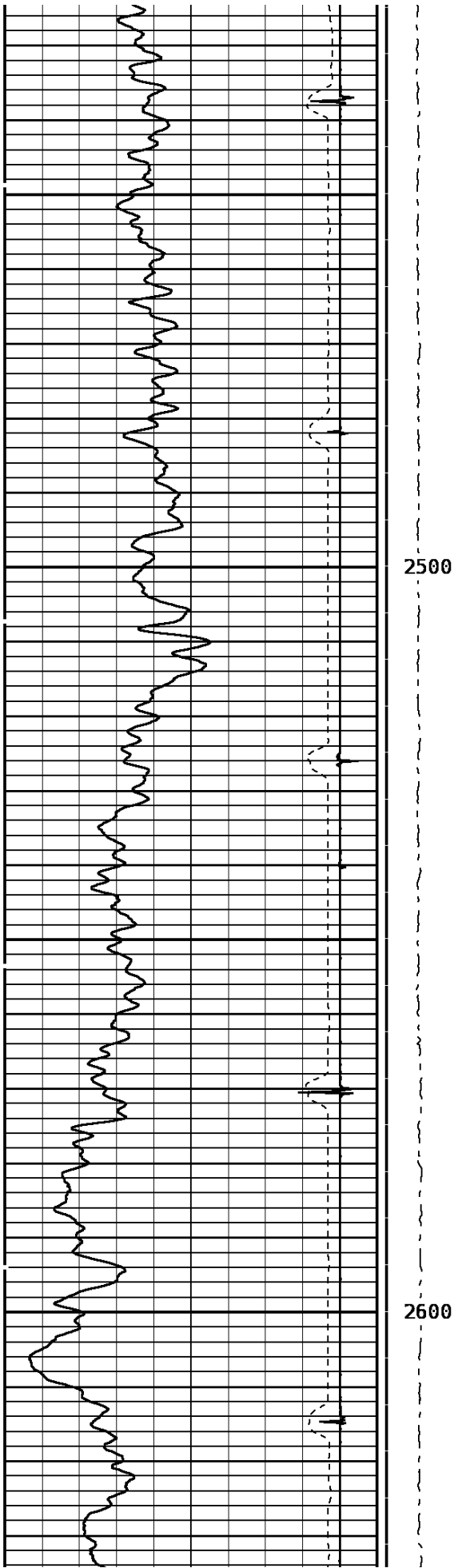
VERSION: 80214133R"

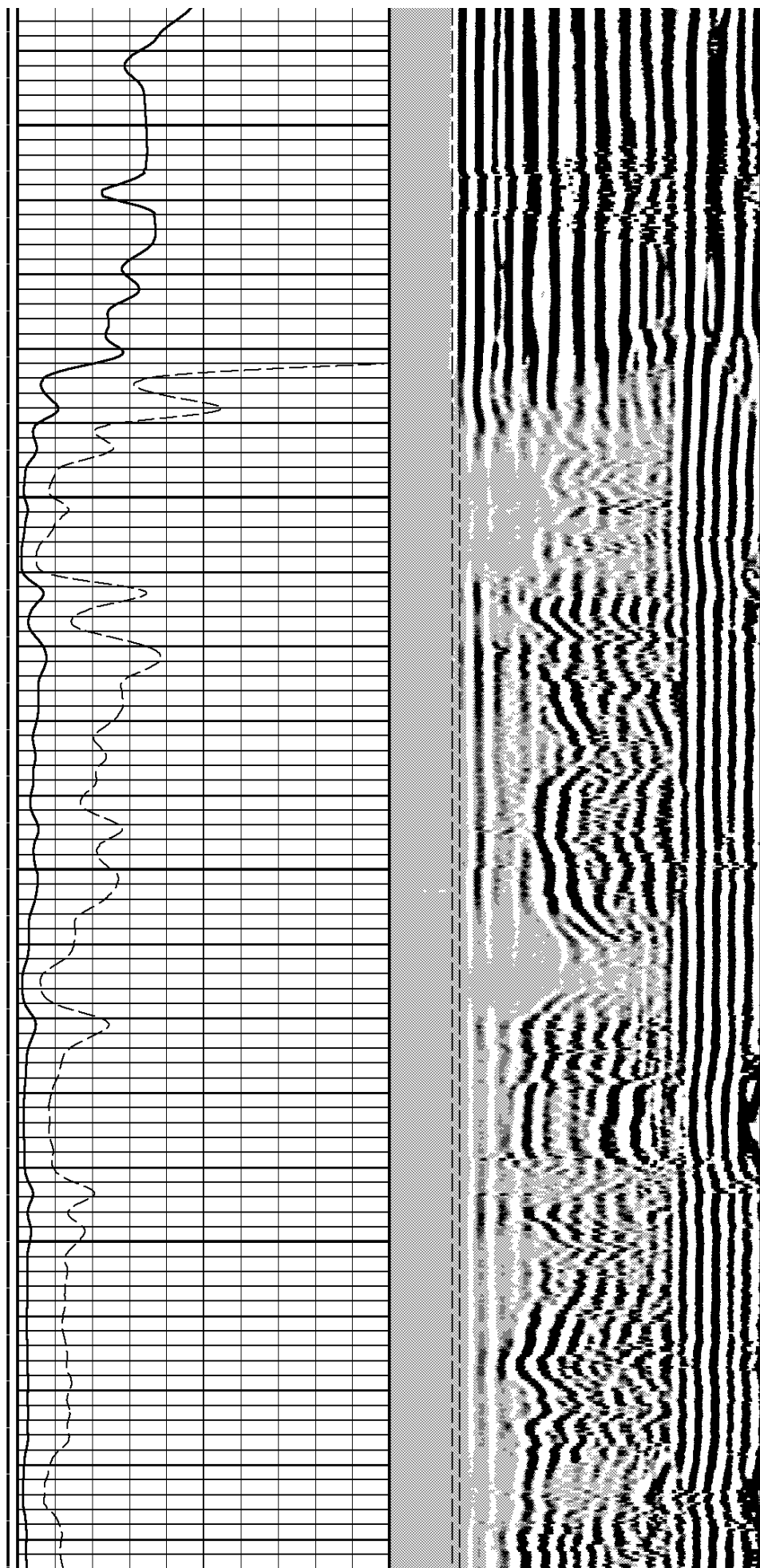
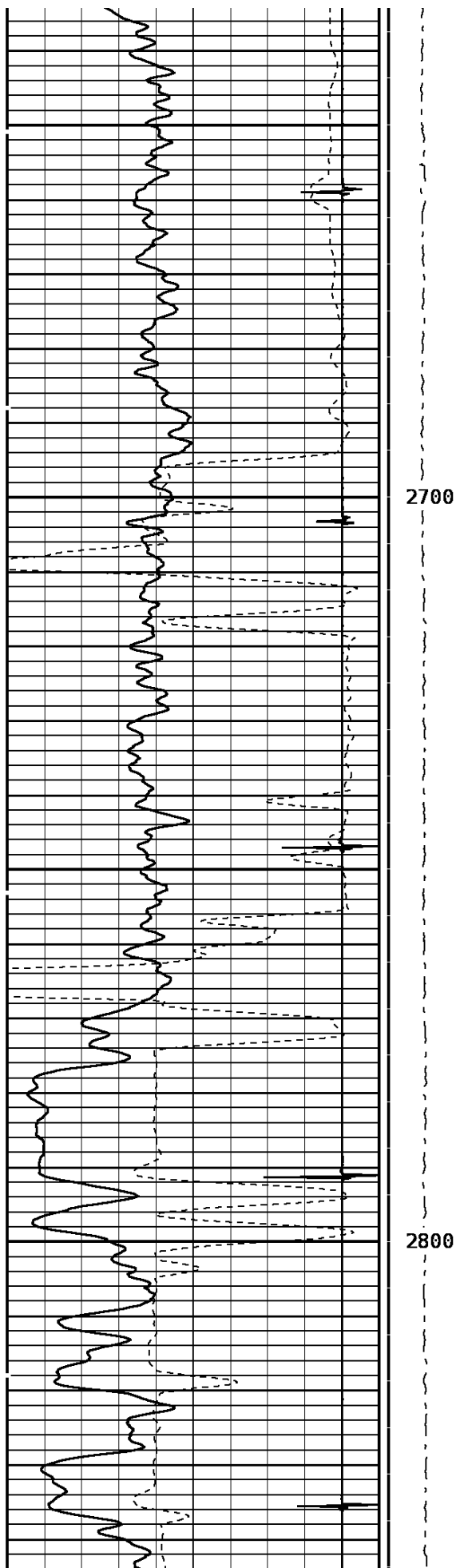
MAIN PASS

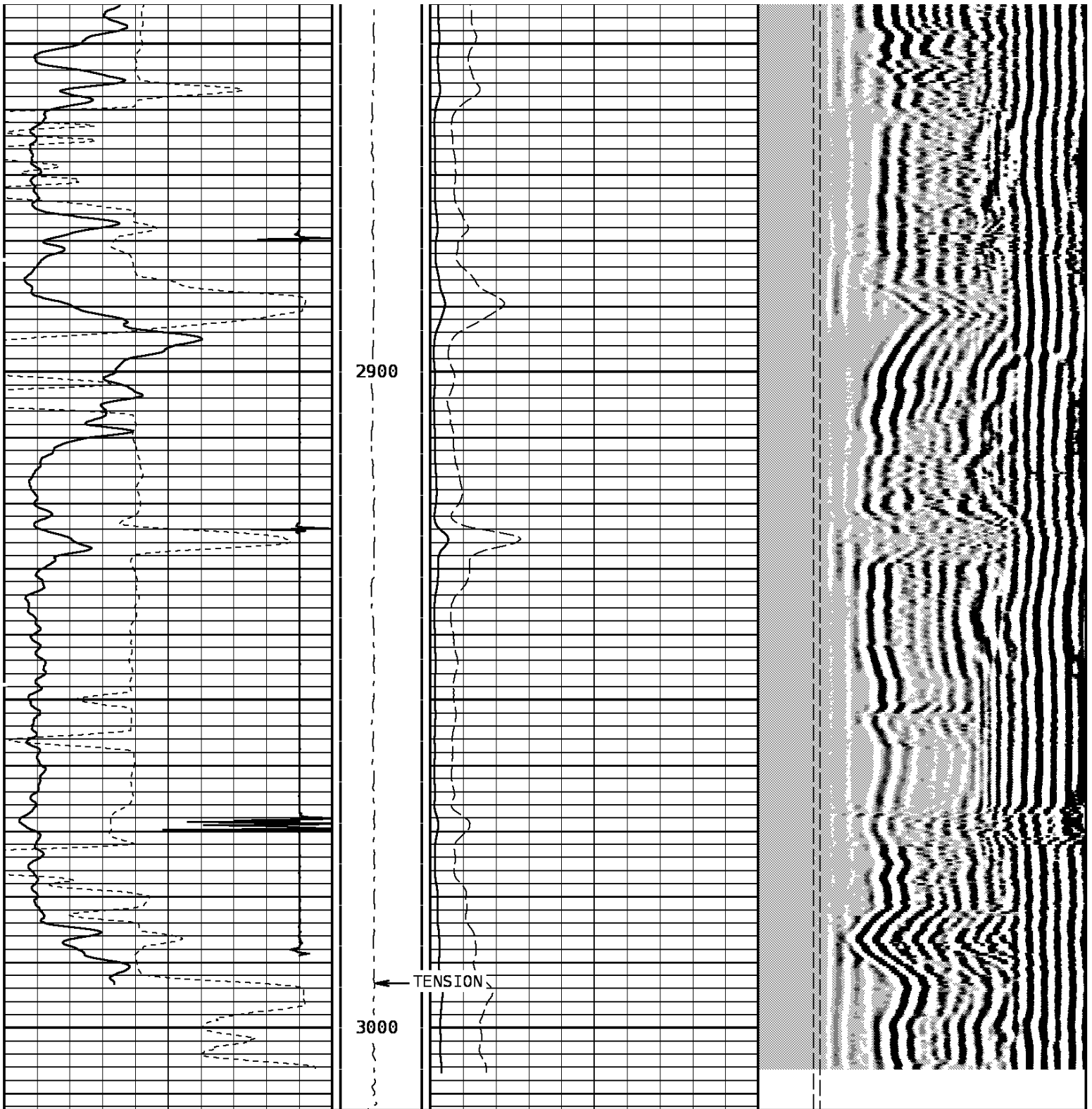
168479 CBL2

FINISH DEPTH: 2396.1 Feet DIRECTION: UP DATE: 04/07/2010 TIME: 13:19 MODE: RECOMPUTE
RECOMPUTED DATE: 04/07/2010 TIME: 13:51









TRAVEL TIME 3FT		Tension	AMPLITUDE 3FT		VARIABLE DENSITY 5FT	
360	Microseconds		0	Millivolts	200	Microseconds
260			100		1200	
Gamma Ray		Tension	AMPLITUDE 3FT X5		FREE PIPE GATE	
0	API		0	Millivolts	200.00	Microseconds
200			20		1200.00	
Collar Locator		Tension			FREE PIPE GATE	
-700	Millivolts				200	Microseconds
77					1200	

START DEPTH: 3012.6 DIRECTION: UP DATE: 04/07/2010 TIME: 13:18 MODE: RECOMPUTE
RECOMPUTED DATE: 04/07/2010 TIME: 13:51

168479 CBL2

MAIN PASS

DEPTH SCALE: 5":100'

VERSION: 80214133R"

Slim Hole Centralizer

Weight 11.9 lb
Length 2.49 ft
Max. Diameter 2.717 in

Collar Locator

Weight 39.8 lb
Length 3.40 ft
Max. Diameter 2.717 in

Slim Hole Gamma Ray

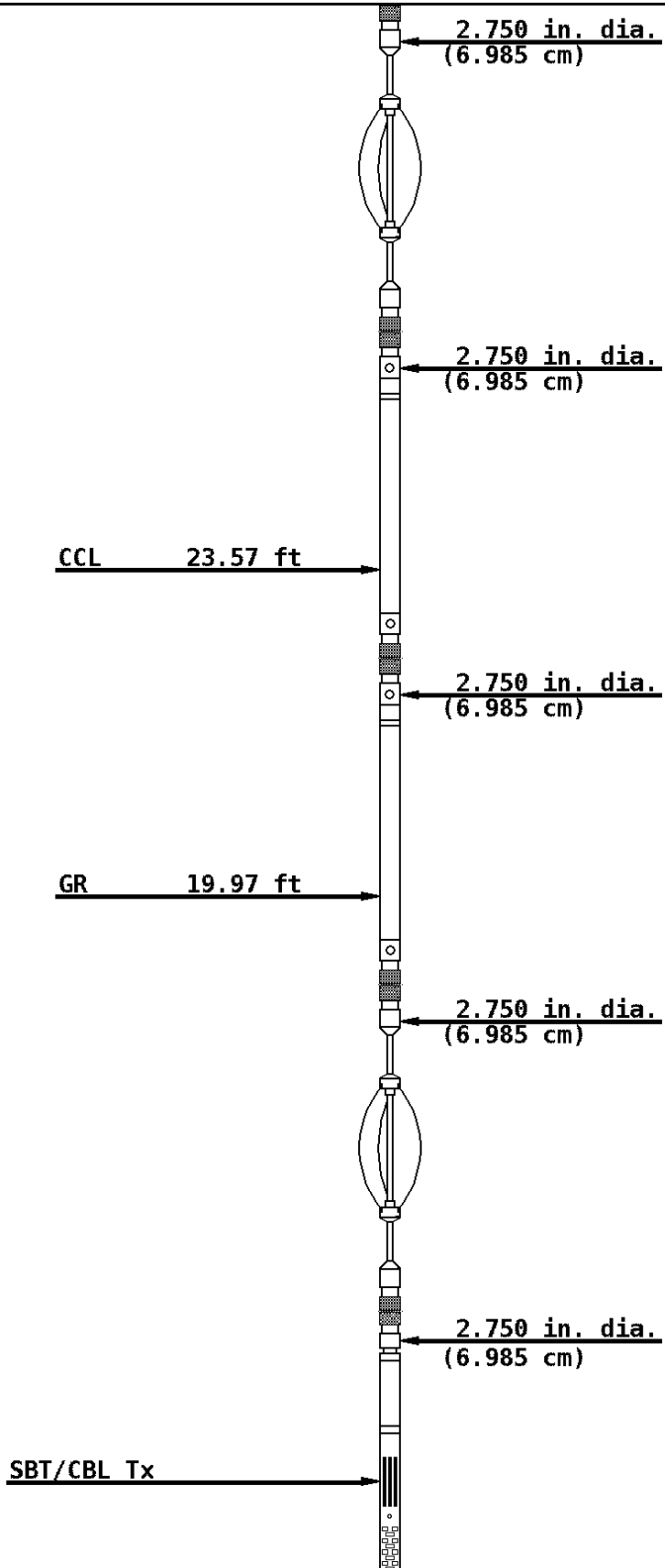
Weight 39.8 lb
Length 4.71 ft
Max. Diameter 2.717 in

Slim Hole Centralizer

Weight 23.8 lb
Length 3.08 ft
Max. Diameter 2.717 in

Sector Bond

Weight 89.8 lb
Length 10.32 ft
Max. Diameter 2.717 in



SBT Rx 7.77 ft

3' Rx 7.28 ft

5' Rx 6.28 ft

2.750 in. dia.
(6.985 cm)

Slim Hole Centralizer

Weight 11.9 lb
Length 2.82 ft
Max. Diameter 2.717 in

COMPANY FRAM OPERATING LLC

WELL SEMINOE 32-2-J

FIELD WHITEWATER

COUNTY MESA

STATE COLORADO



Weatherford®