



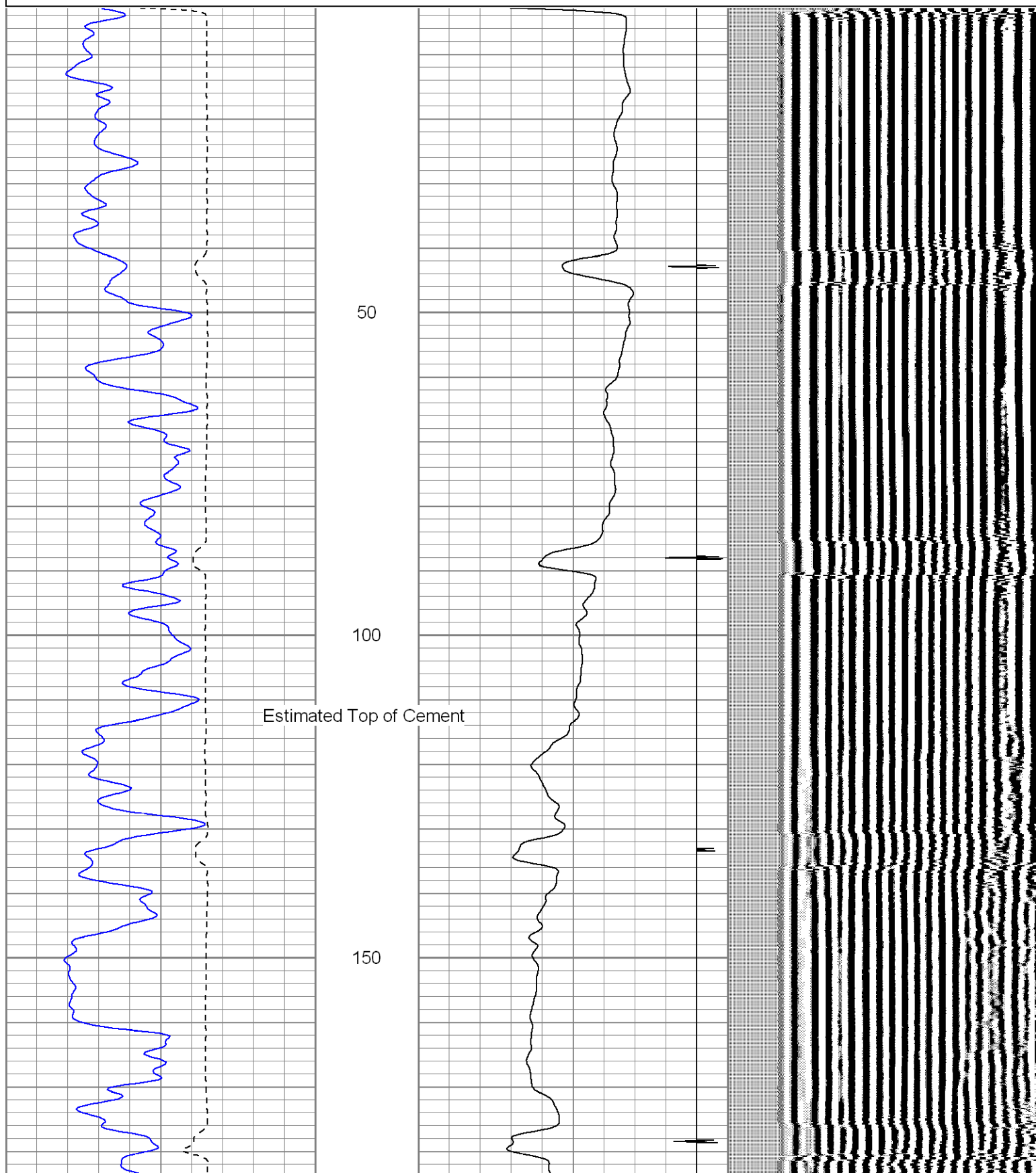
<<< Fold Here >>>
All interpretations are opinions based on inferences from electrical or other measurements and we cannot and do not guarantee the accuracy or correctness of any interpretation, and we shall not, except in the case of gross or willful negligence on our part, be liable or responsible for any loss, costs, damages, or expenses incurred or sustained by anyone resulting from any interpretation made by any of our officers, agents or employees. These interpretations are also subject to our general terms and conditions set out in our current Price Schedule.
Comments
XTO Hill stay on main road past Dead Horse, stay on main road past Beige Tanks, down thru Alamosa Canyon take second left, at Y go left, at next Y go right stay on main road, dead end on location.  CBL ran under 1000 PSI.

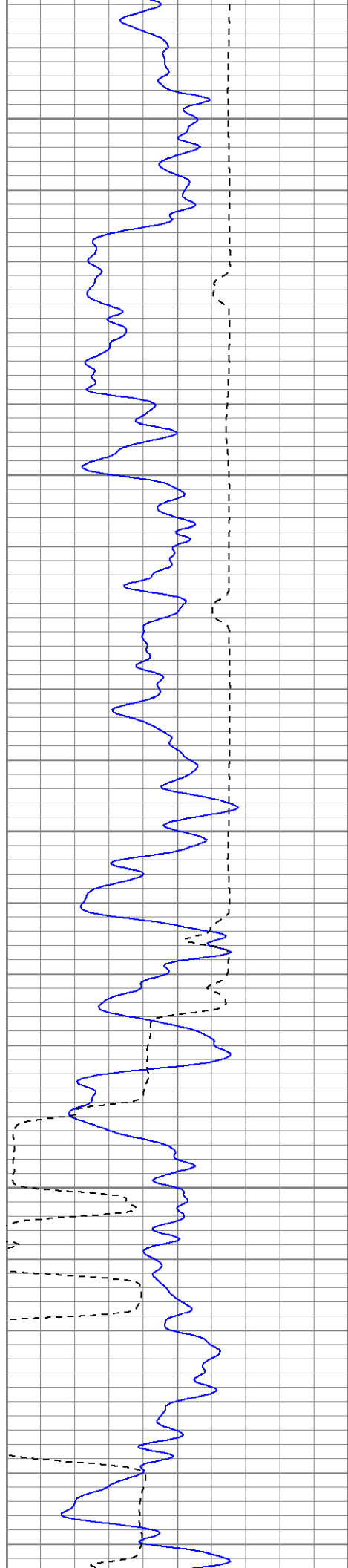


Database File: hr01-08b.db  
Dataset Pathname: pass2  
Presentation Format: cblsec  
Dataset Creation: Tue Feb 23 12:55:44 2010 by Log Open-Cased 071220  
Charted by: Depth in Feet scaled 1:240

0	GR (GAPI)	200
200	GR (GAPI)	400
400	TT3 (usec)	200
-----		

18	CCL	-2	200	VDL	1200
0	AMP3 (mV)	100			





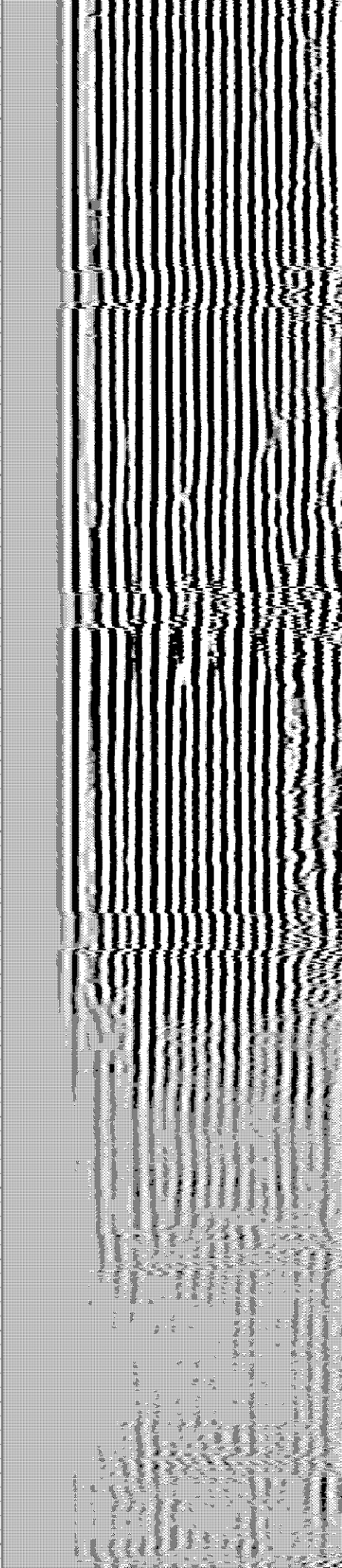
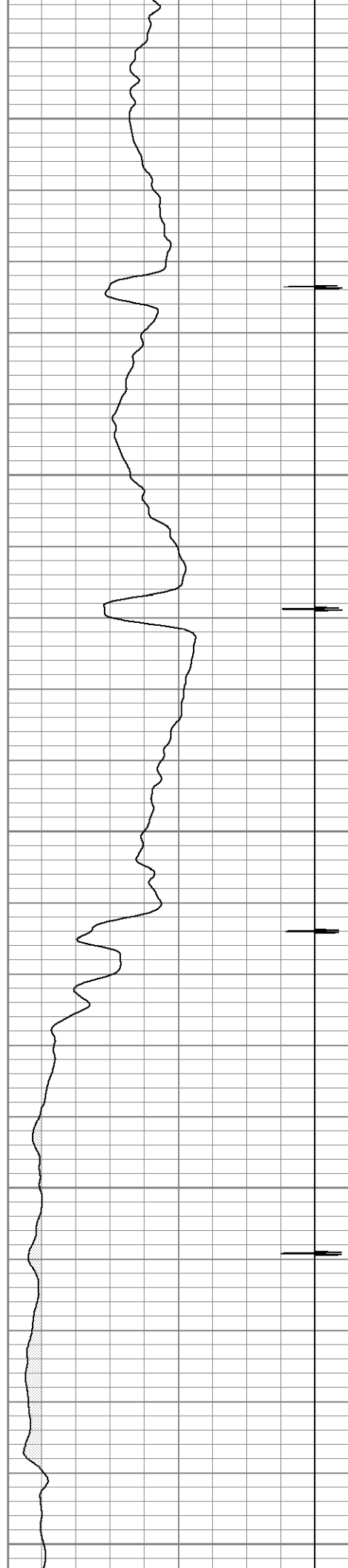
200

250

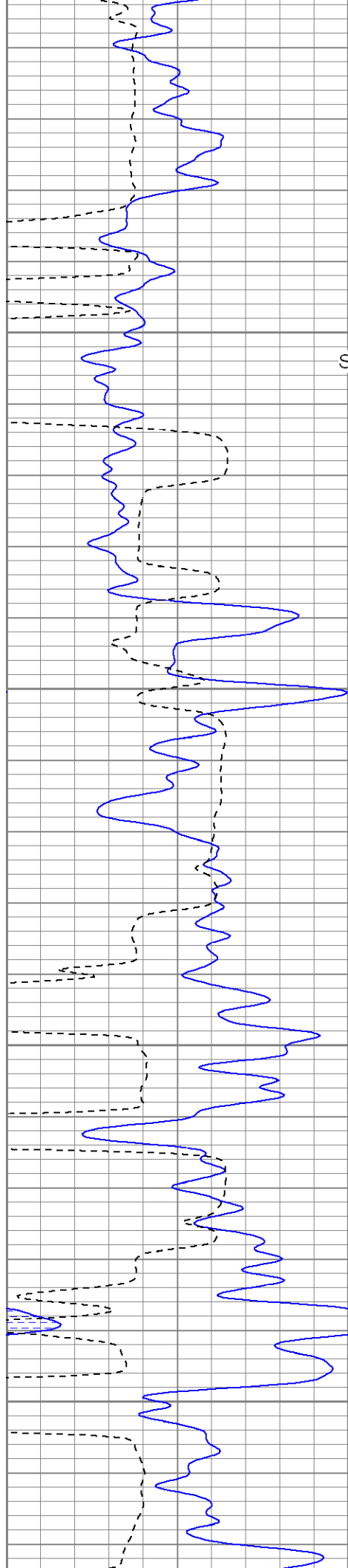
300

350

400





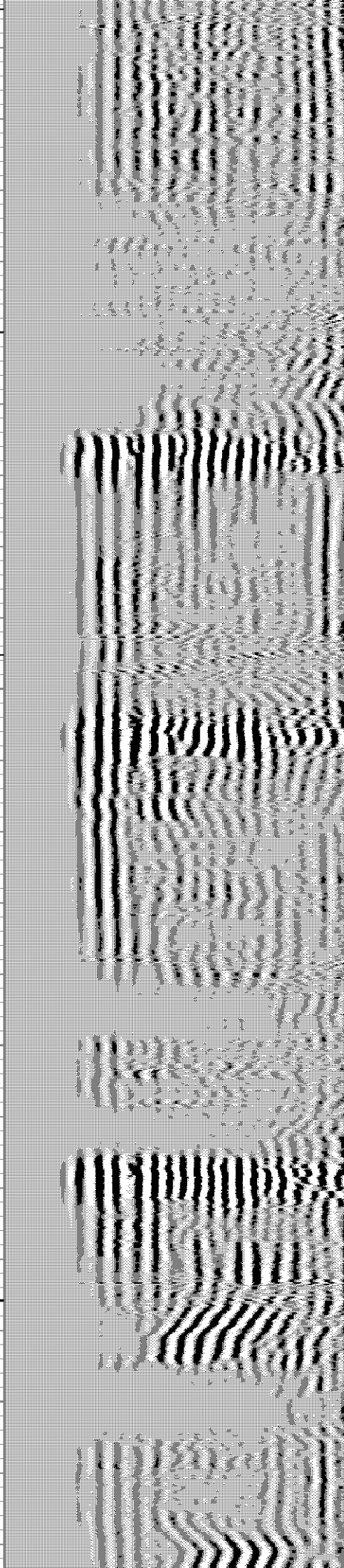
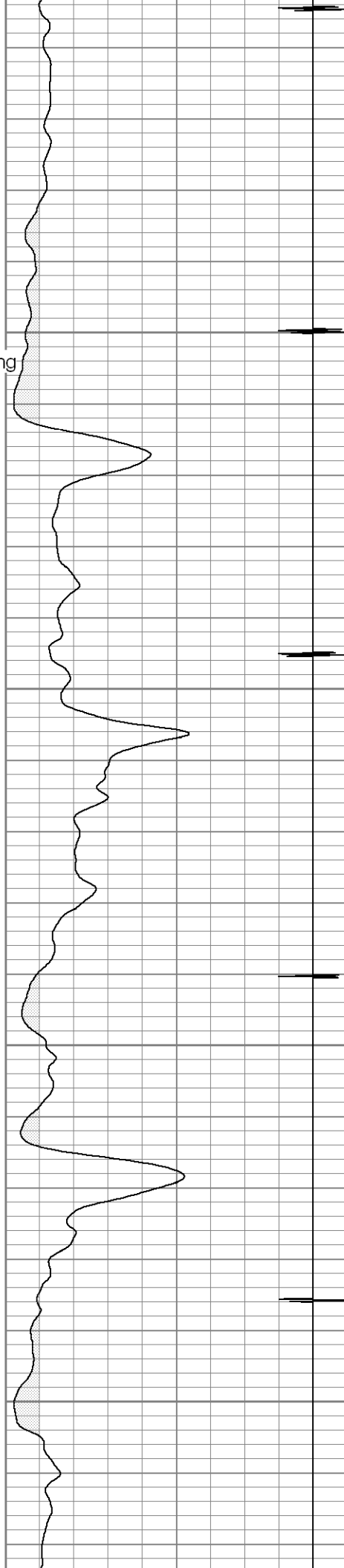


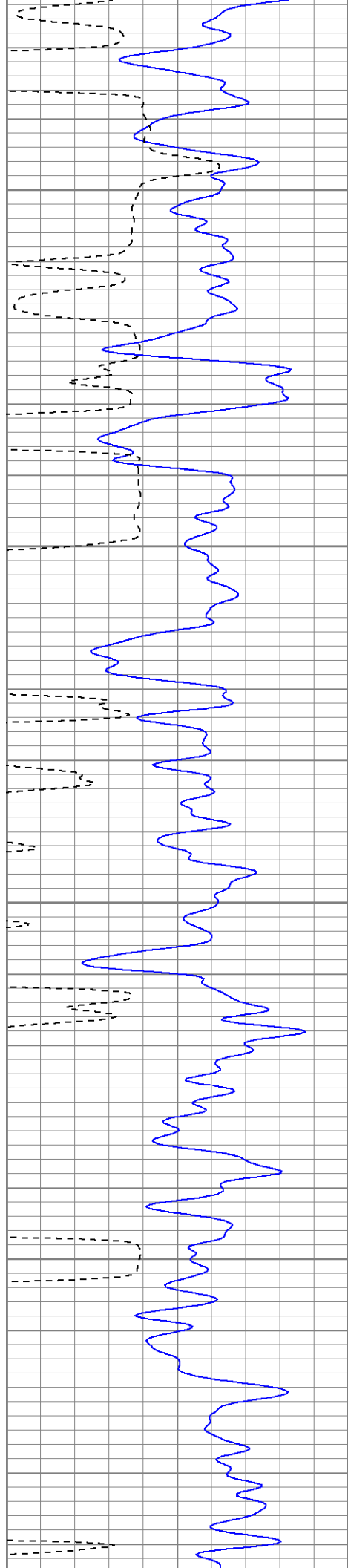
450  
Surface Casing

500

550

600



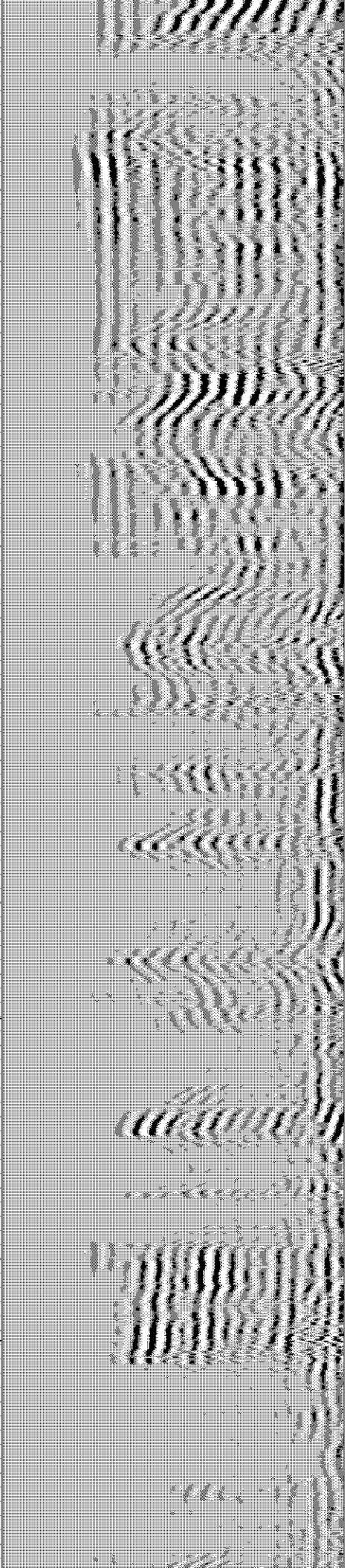
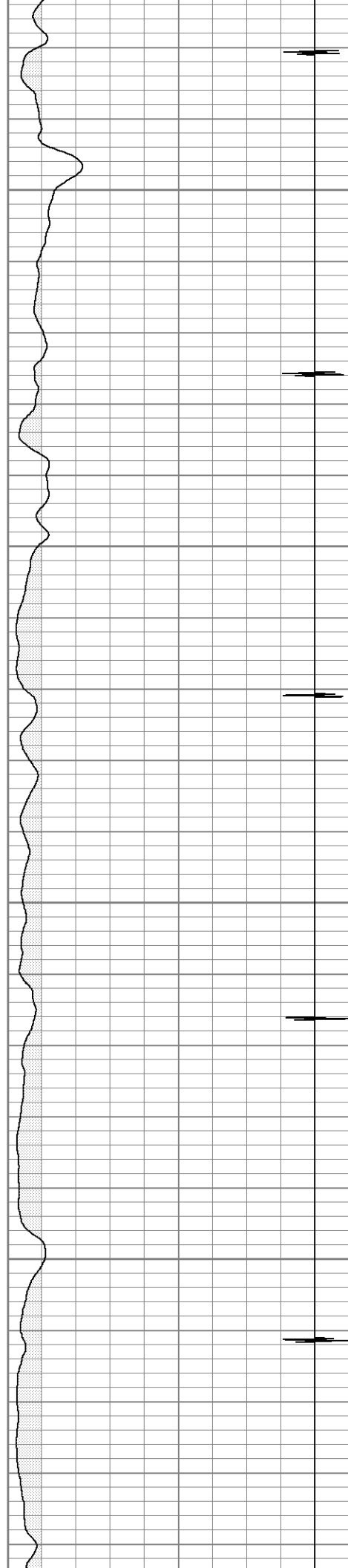


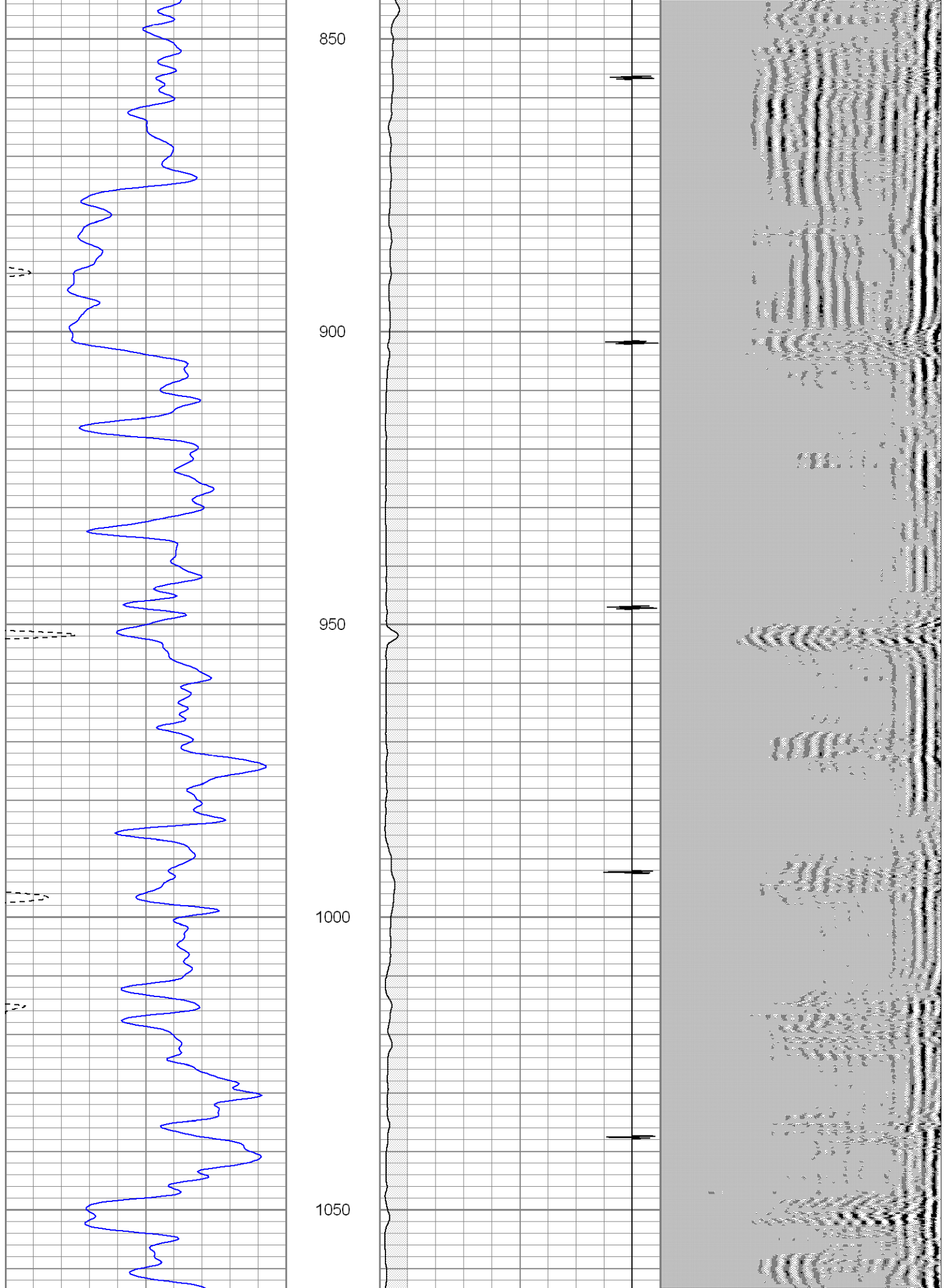
650

700

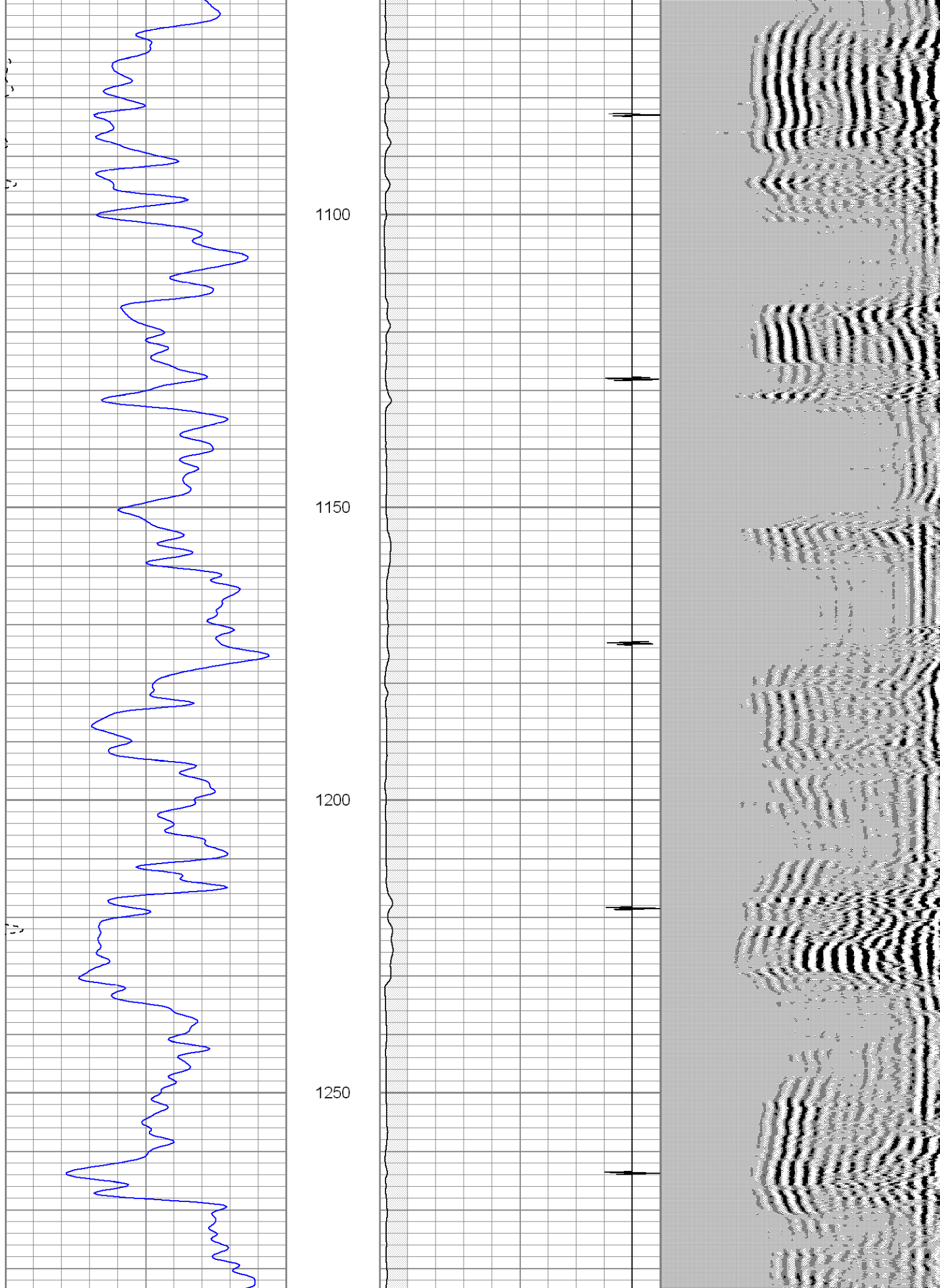
750

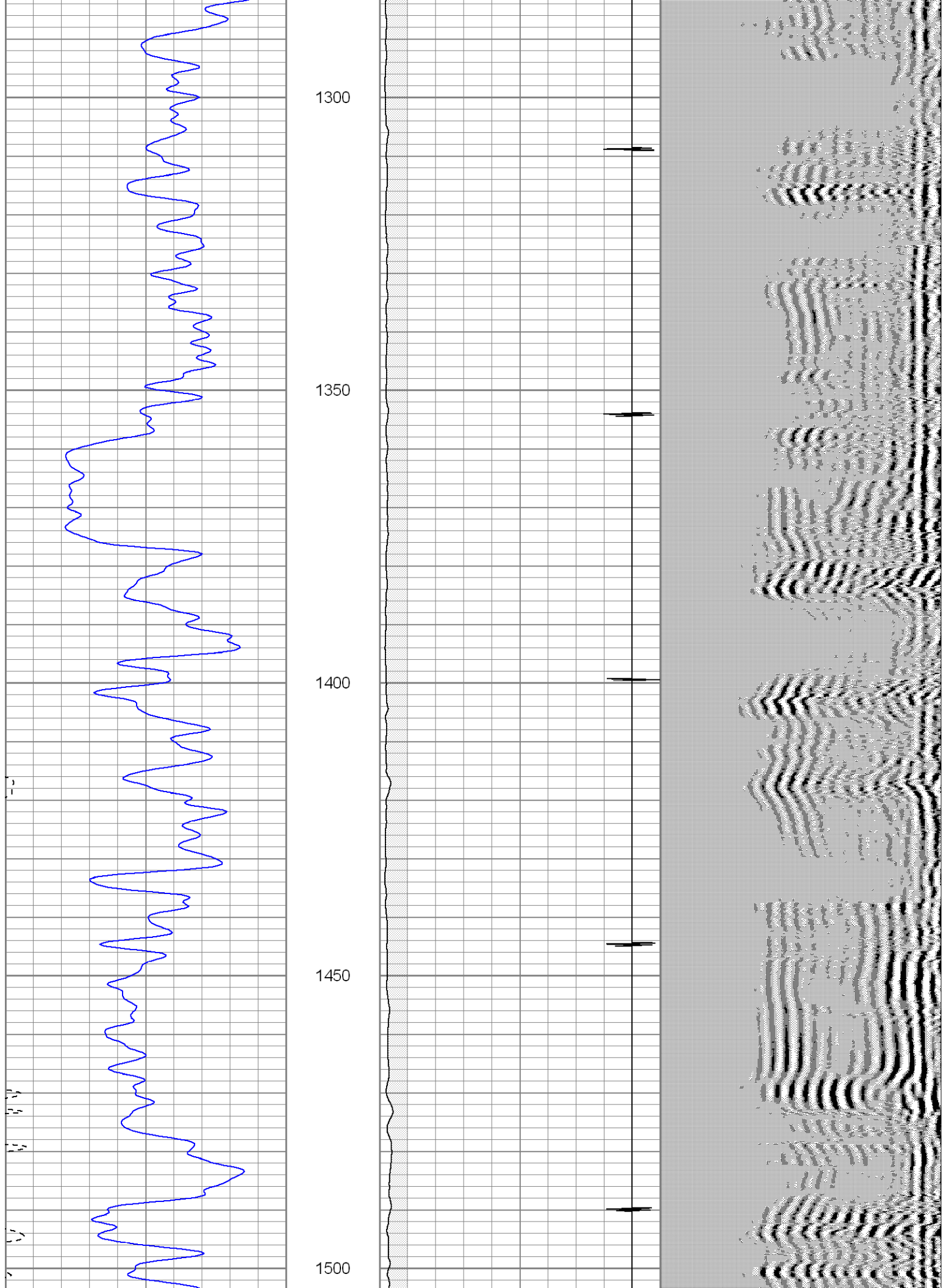
800



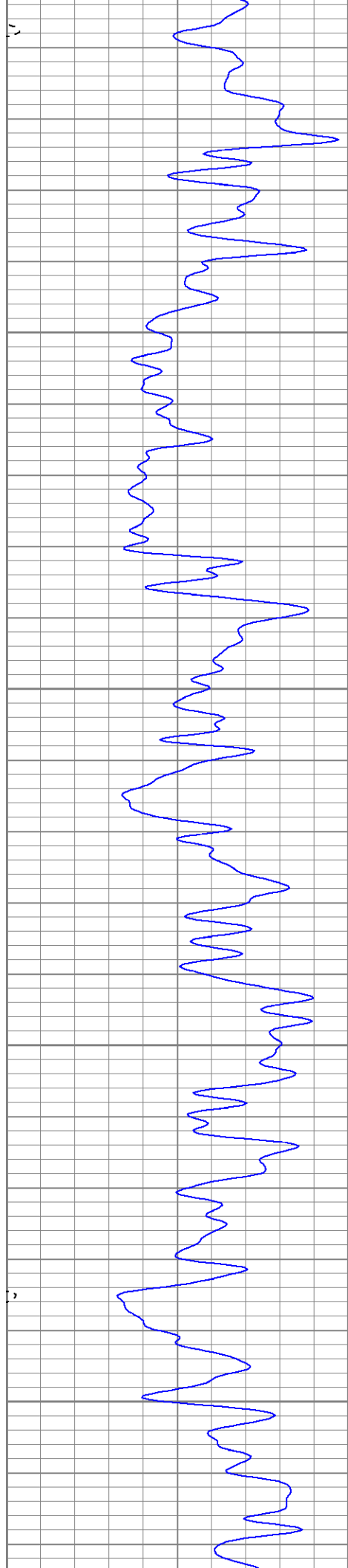










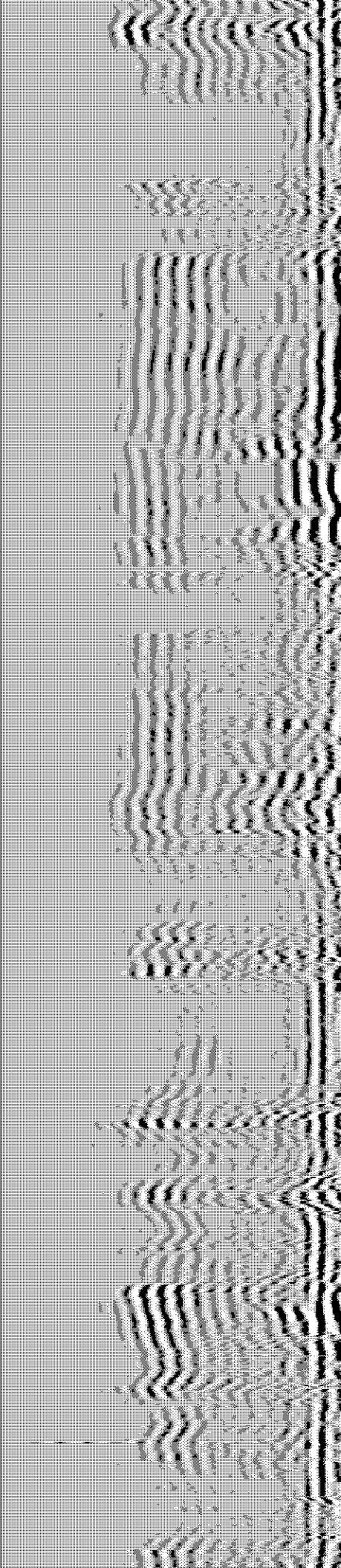
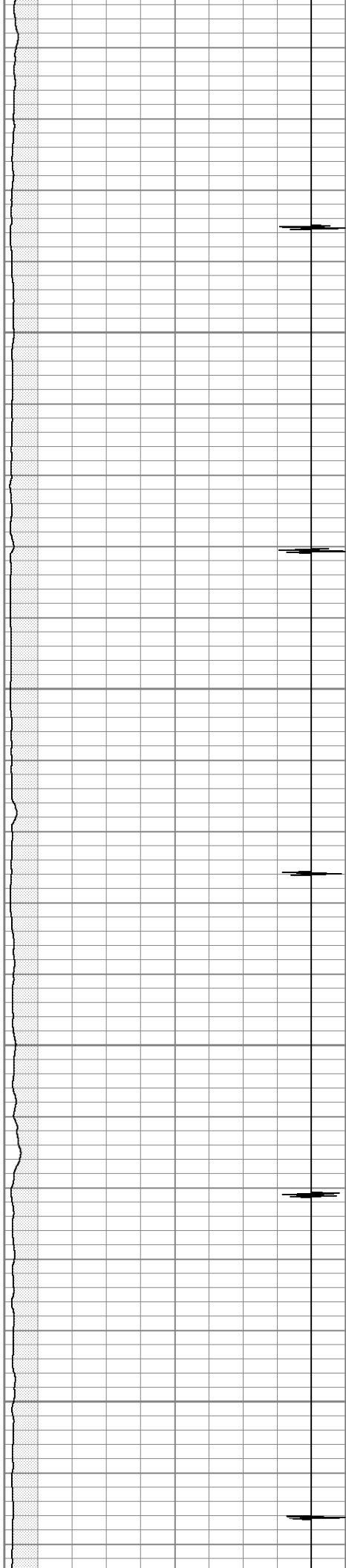


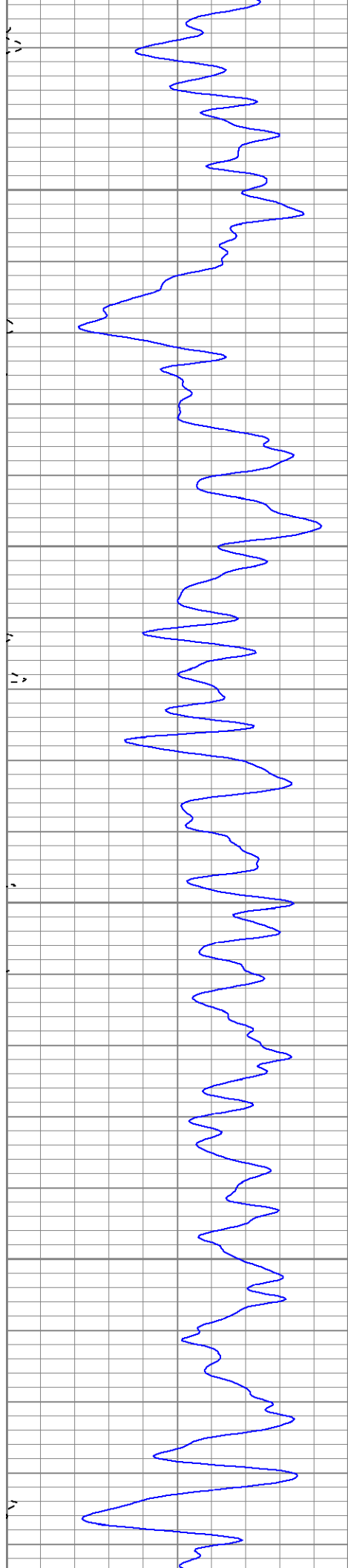
1550

1600

1650

1700



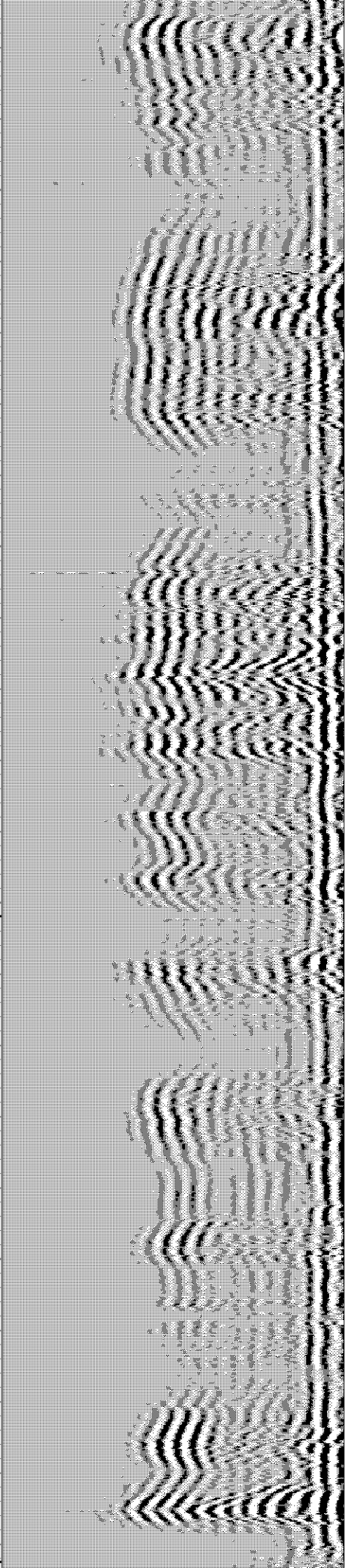
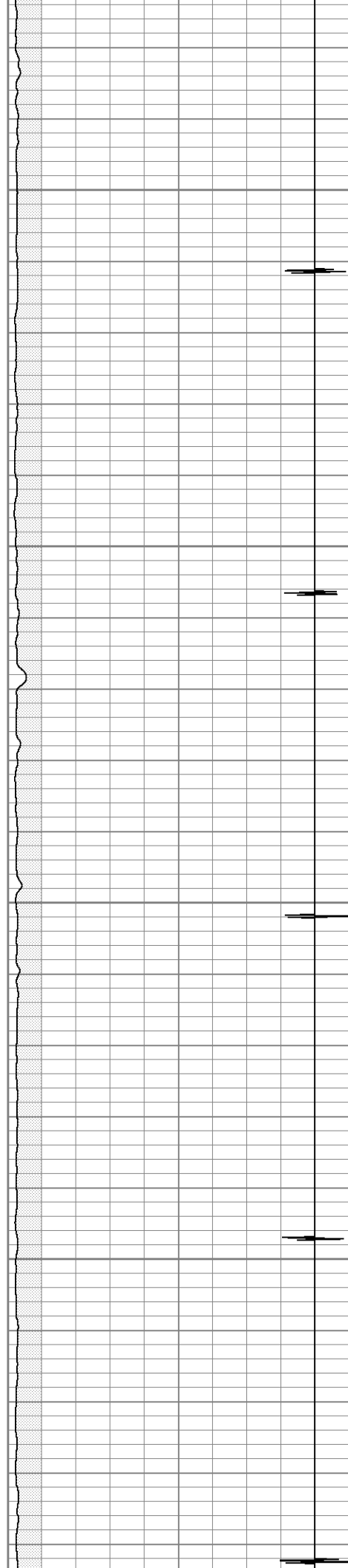


1750

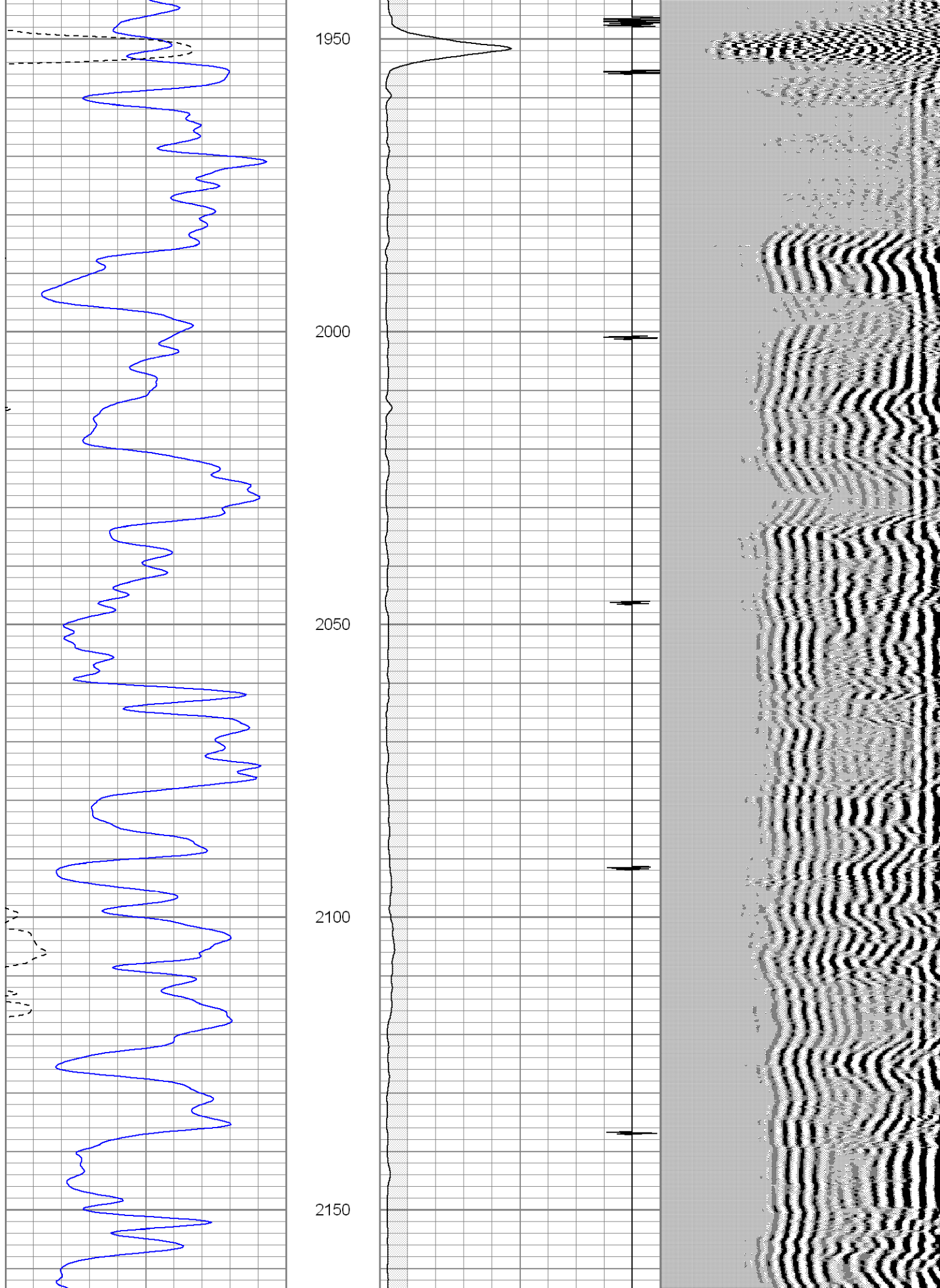
1800

1850

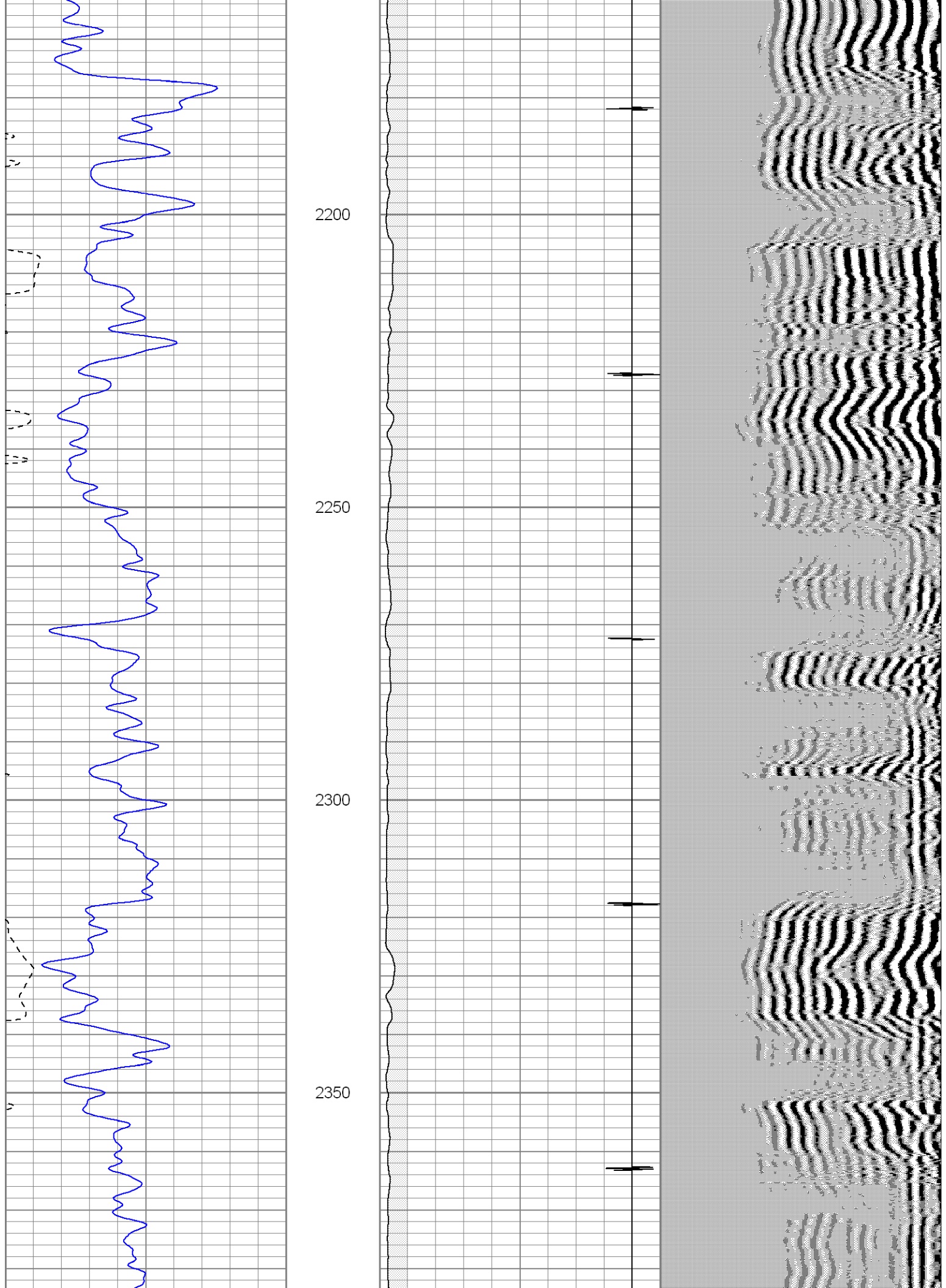
1900

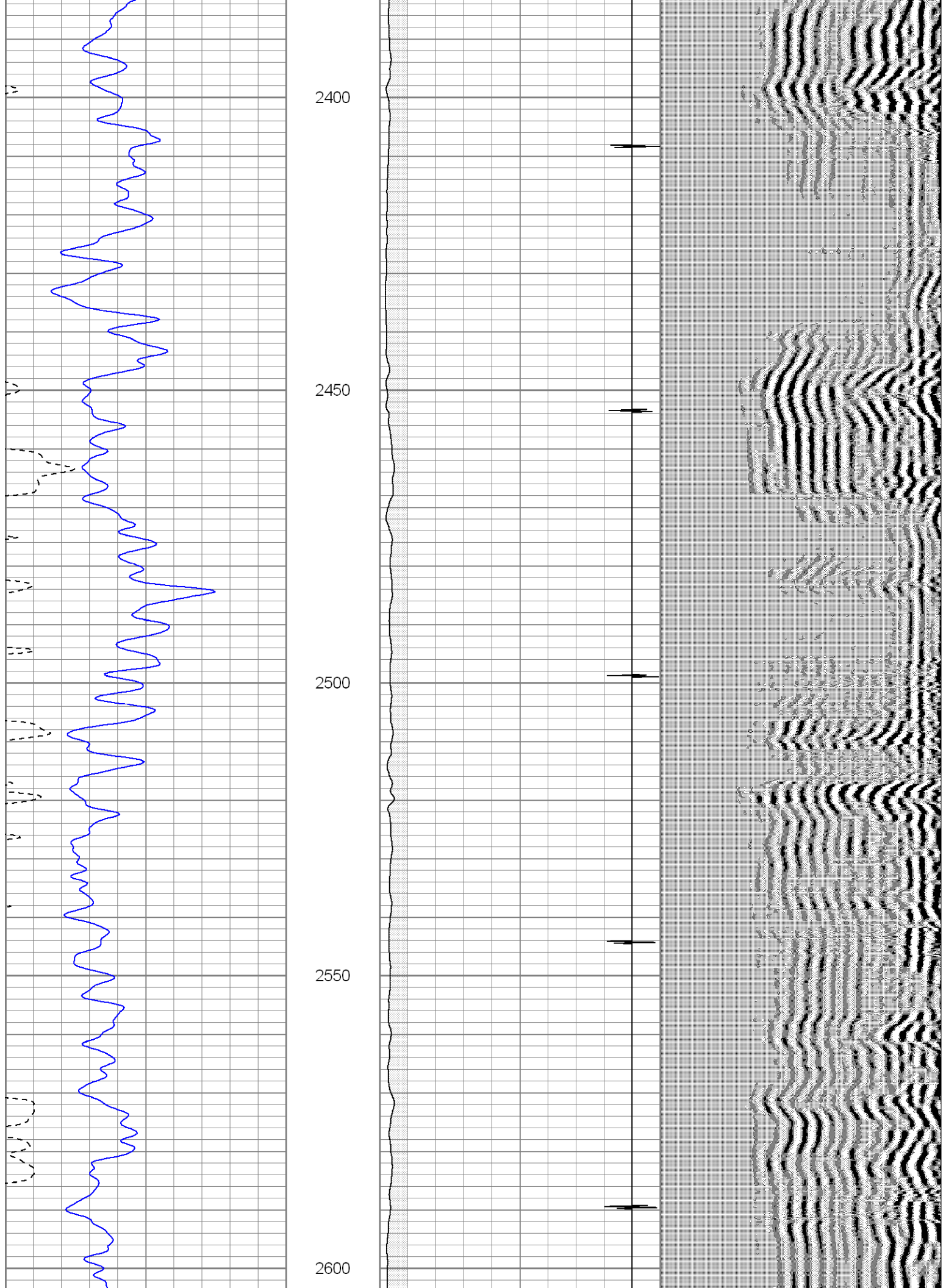


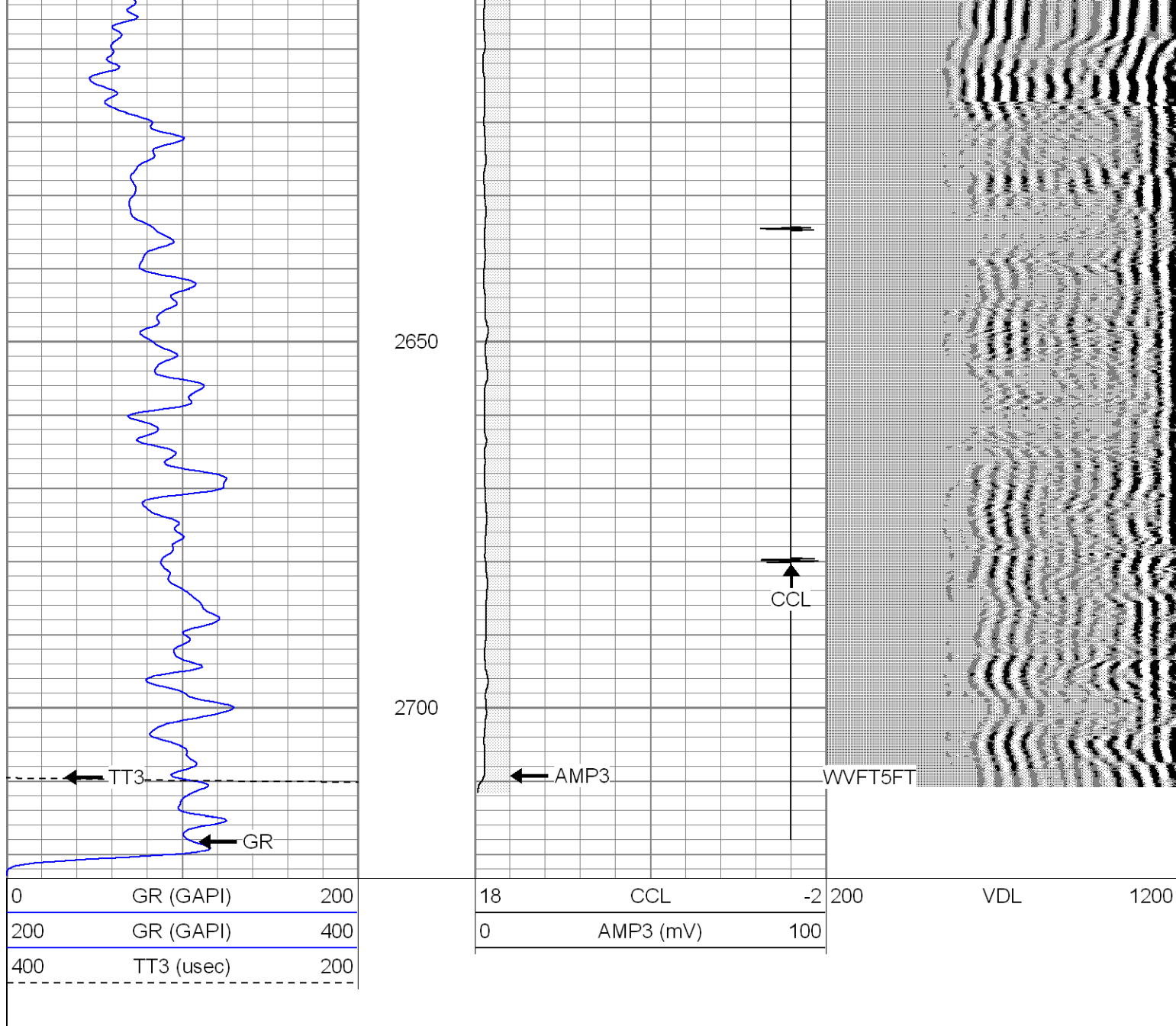










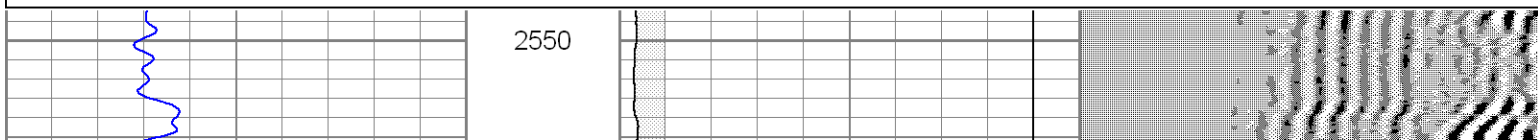


# Repeat Section 0 PSI

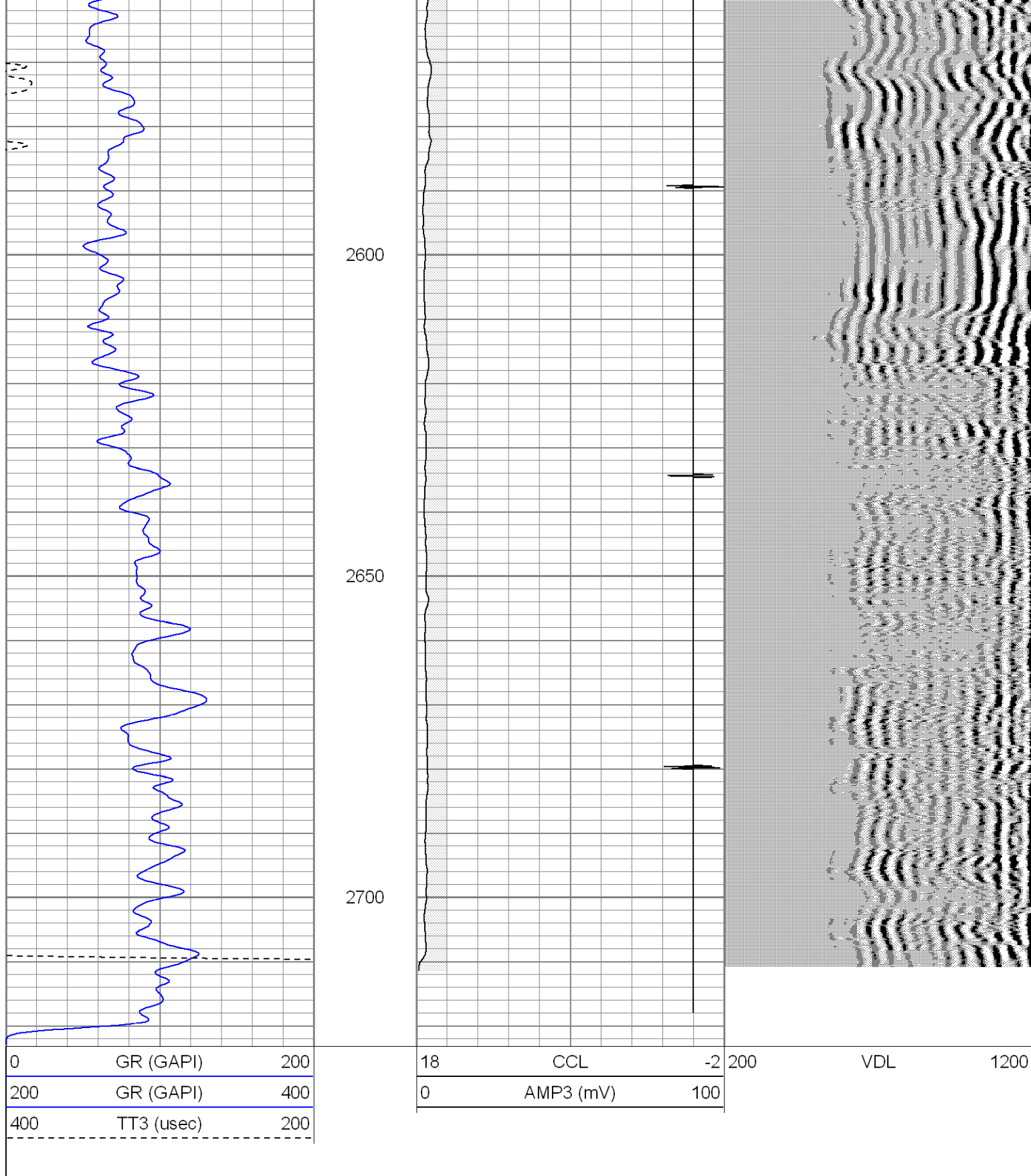
Database File: hr01-08b.db  
 Dataset Pathname: pass1.1  
 Presentation Format: cblsec  
 Dataset Creation: Tue Feb 23 14:15:04 2010 by Calc Open-Cased 071220  
 Charted by: Depth in Feet scaled 1:240

0	GR (GAPI)	200
200	GR (GAPI)	400
400	TT3 (usec)	200

18	CCL	-2	200	VDL	1200
0	AMP3 (mV)	100			







### Calibration Report

Database File: hr01-08b.db  
Dataset Pathname: pass1.1  
Dataset Creation: Tue Feb 23 14:15:04 2010 by Calc Open-Cased 071220

### Gamma Ray Calibration Report

Serial Number: 081014  
Tool Model: 275D\_INC

Performed: Mon Feb 01 10:29:58 2010

Calibrator Value: 200.0 GAPI

Background Reading: 50.0 cps

Calibrator Reading: 250.0 cps

Sensitivity: 1.0000 GAPI/cps

### Inclinometer Calibration Report

Performed: Mon Feb 01 10:30:00 2010

	Low Read.	High Read.	Low Ref.	High Ref.	
X Accelerometer	-3589.40	3580.00	-1.00	1.00	gee
Y Accelerometer	-3673.00	3520.20	-1.00	1.00	gee
Z Accelerometer					

### Segmented Cement Bond Log Calibration Report

Serial Number: 080321

Tool Model: ProbeRadial

Calibration Casing Diameter: 5.500 in

Calibration Depth: 987.339 ft

Master Calibration, performed Thu Feb 04 07:17:45 2010:

	Raw (v)		Calibrated (mv)		Results	
	Zero	Cal	Zero	Cal	Gain	Offset
3'	-0.040	1.700	-1.000	85.000	49.425	0.977
CAL	0.013	0.505				
5'	-0.040	1.400	-1.000	85.000	59.722	1.389
SUM						
S1	0.014	1.237	0.000	85.000	69.520	-0.975
S2	0.014	1.200	0.000	85.000	71.703	-1.014
S3	0.014	1.296	0.000	85.000	66.287	-0.939
S4	0.014	1.418	0.000	85.000	60.512	-0.823
S5	0.014	1.586	0.000	85.000	54.064	-0.752
S6	0.014	1.611	0.000	85.000	53.215	-0.752
S7	0.015	1.559	0.000	85.000	55.034	-0.805
S8	0.014	1.367	0.000	85.000	62.846	-0.892

Sensor	Offset (ft)	Schematic	Description	Len (ft)	OD (in)	Wt (lb)
WVFS8	13.40					
WV5FT	12.40					
WVFCAL	9.15		SCBL-ProbeRadial (080321)	8.75	2.75	106.50
CCL	5.15		Probe 2 3/4 RadII			
ACCX	3.48		X	3.00	1.69	25.00
ACCY	3.48		GR-275D_INC (081014)	4.50	2.75	50.00
ACCZ	3.48		2-3/4" GR-CCL with Inclination			
GR	2.48		Prod	1.65	1.69	1.00

Dataset: hr01-08b.db: field/well/run1/pass1

Total Length: 17.90 ft

Total Weight:	182.50 lb
O.D.	2.75 in