

DUAL INDUCTION LOG

Company XTO Energy Inc. Well Hill Ranch 01-08 Field Purgatorie River County Las Animas State CO		Company XTO Energy Inc. Well Hill Ranch 01-08 Field Purgatorie River County Las Animas State CO		Location: API # : 05 071 09559 00 2546' FNL & 654' FEL SEC 01 TWP 35S RGE 68W Permanent Datum Ground Level Elevation 8518' Log Measured From Ground Level Drilling Measured From Ground Level		Other Services CDL NEU Elevation K.B. ----- D.F. ----- G.L. 8518'	
Date	2/5/10						
Run Number	One						
Depth Driller	2818'						
Depth Logger	2815'						
Bottom Logged Interval	2813'						
Top Log Interval	Surface Casing						
Casing Driller	451'						
Casing Logger	454'						
Bit Size	7 7/8"						
Type Fluid in Hole	water						
Density / Viscosity	///						
pH / Fluid Loss	///						
Source of Sample	///						
Rm @ Meas. Temp	///						
Rmf @ Meas. Temp	///						
Rmc @ Meas. Temp	///						
Source of Rmf / Rmc	///						
Rm @ BHT	///						
Time Circulation Stopped	12:00 a.m.						
Time Logger on Bottom	3:25 a.m.						
Maximum Recorded Temperature	119F						
Equipment Number	045						
Location	Trinidad						
Recorded By	Worley						
Witnessed By	Mr. Dalton King						

<<< Fold Here >>>

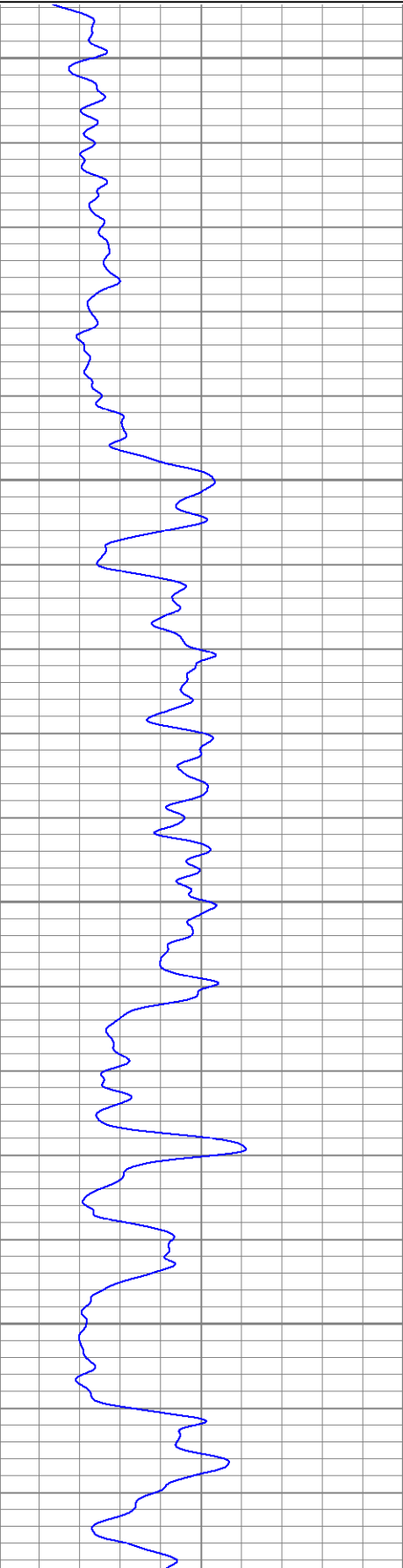
All interpretations are opinions based on inferences from electrical or other measurements and we cannot and do not guarantee the accuracy or correctness of any interpretation, and we shall not, except in the case of gross or willful negligence on our part, be liable or responsible for any loss, costs, damages, or expenses incurred or sustained by anyone resulting from any interpretation made by any of our officers, agents or employees. These interpretations are also subject to our general terms and conditions set out in our current Price Schedule.

Comments

Database File: hillranch01-08.db
Dataset Pathname: pass2.1
Presentation Format: dil
Dataset Creation: Fri Feb 05 04:59:07 2010 by Calc Open-Cased 071220
Charted by: Depth in Feet scaled 1:240

0	GR (GAPI)	200
0	SP (mV)	200

0.2	RILM (Ohm-m)	2000
0.2	RILD (Ohm-m)	2000
0.2	RLL3 (Ohm-m)	2000

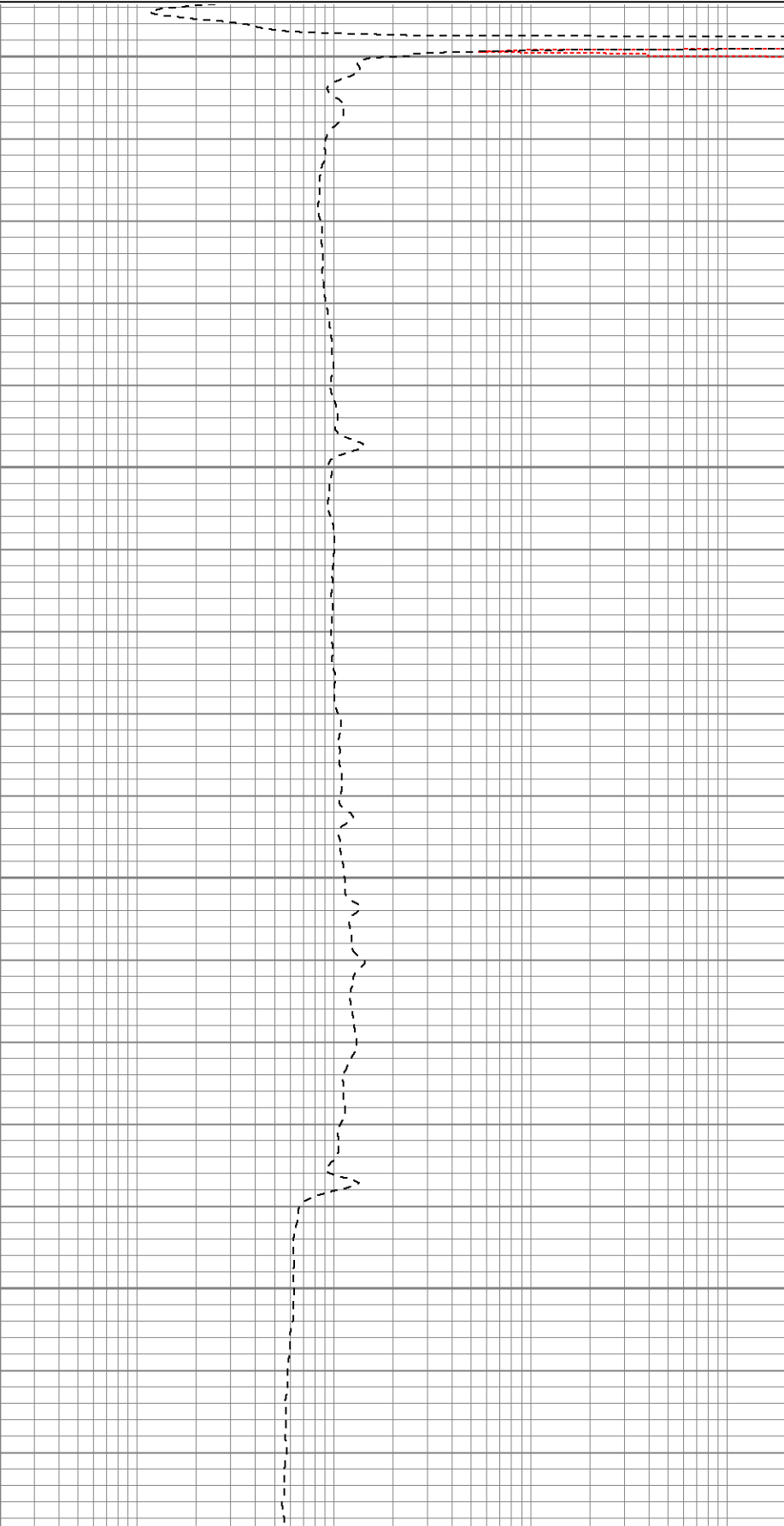


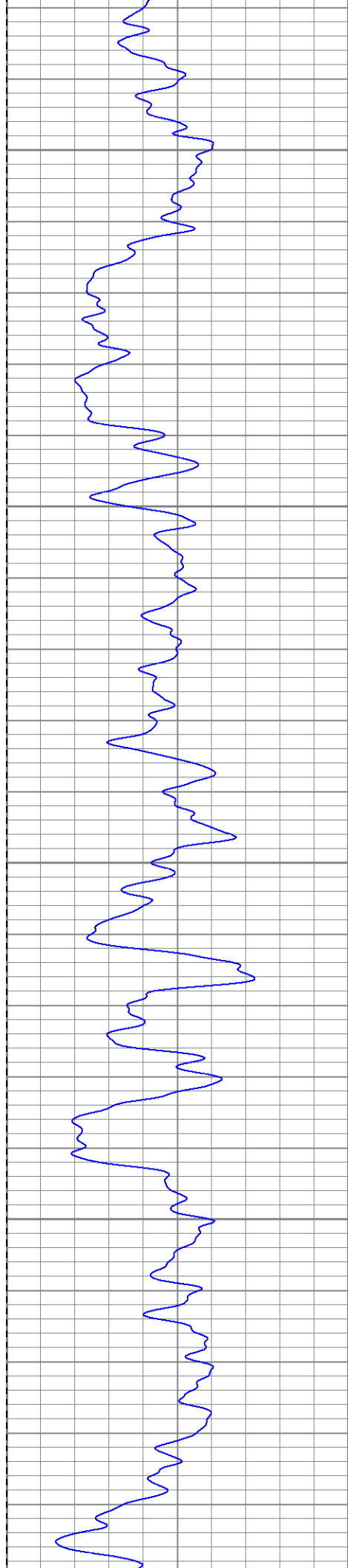
0

50

100

150



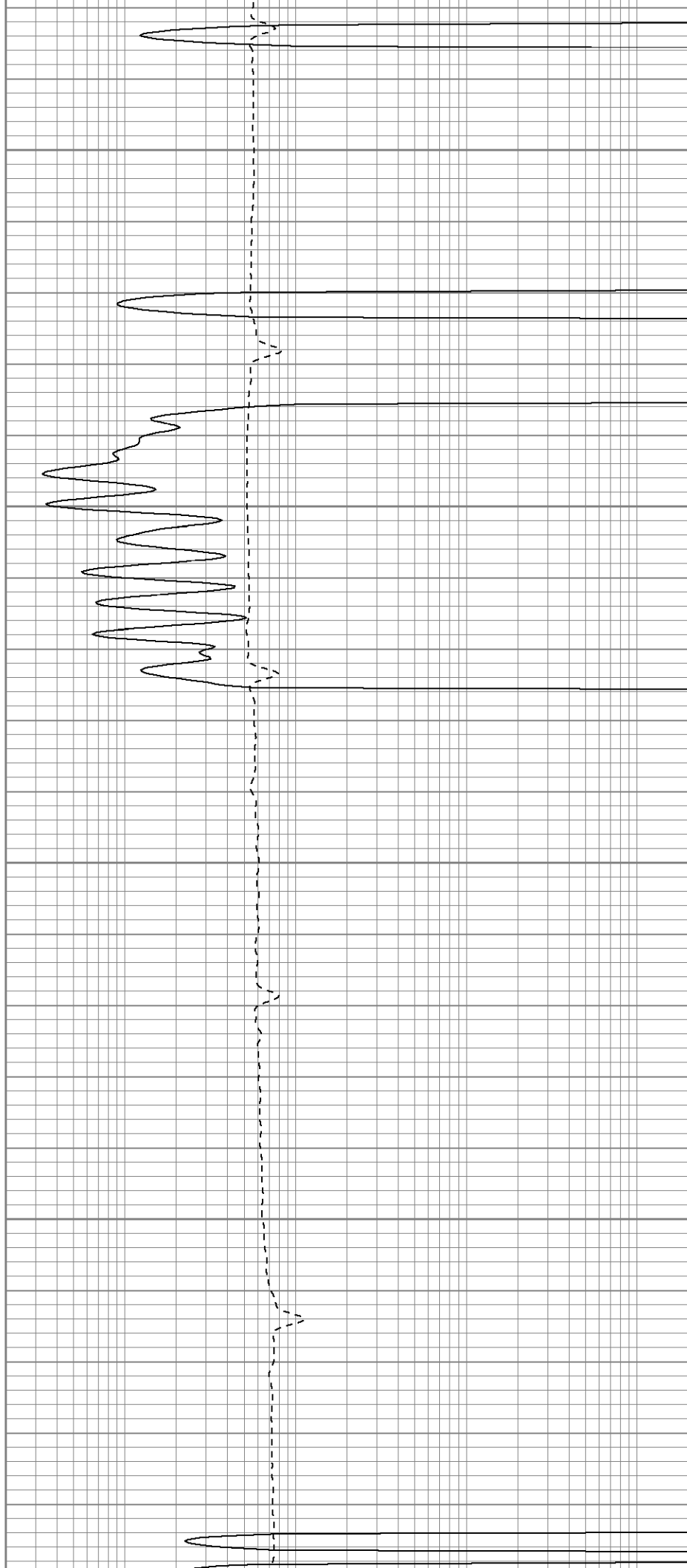


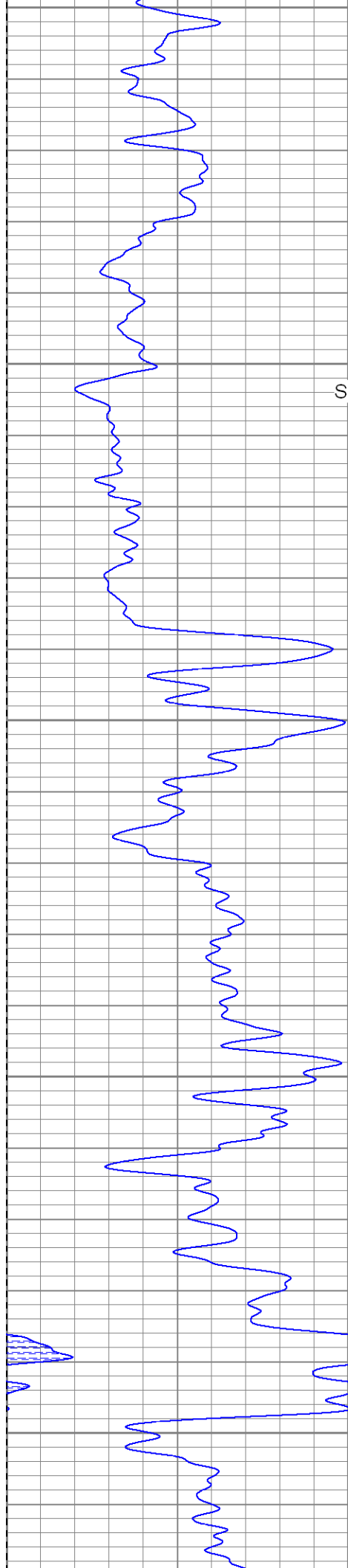
200

250

300

350



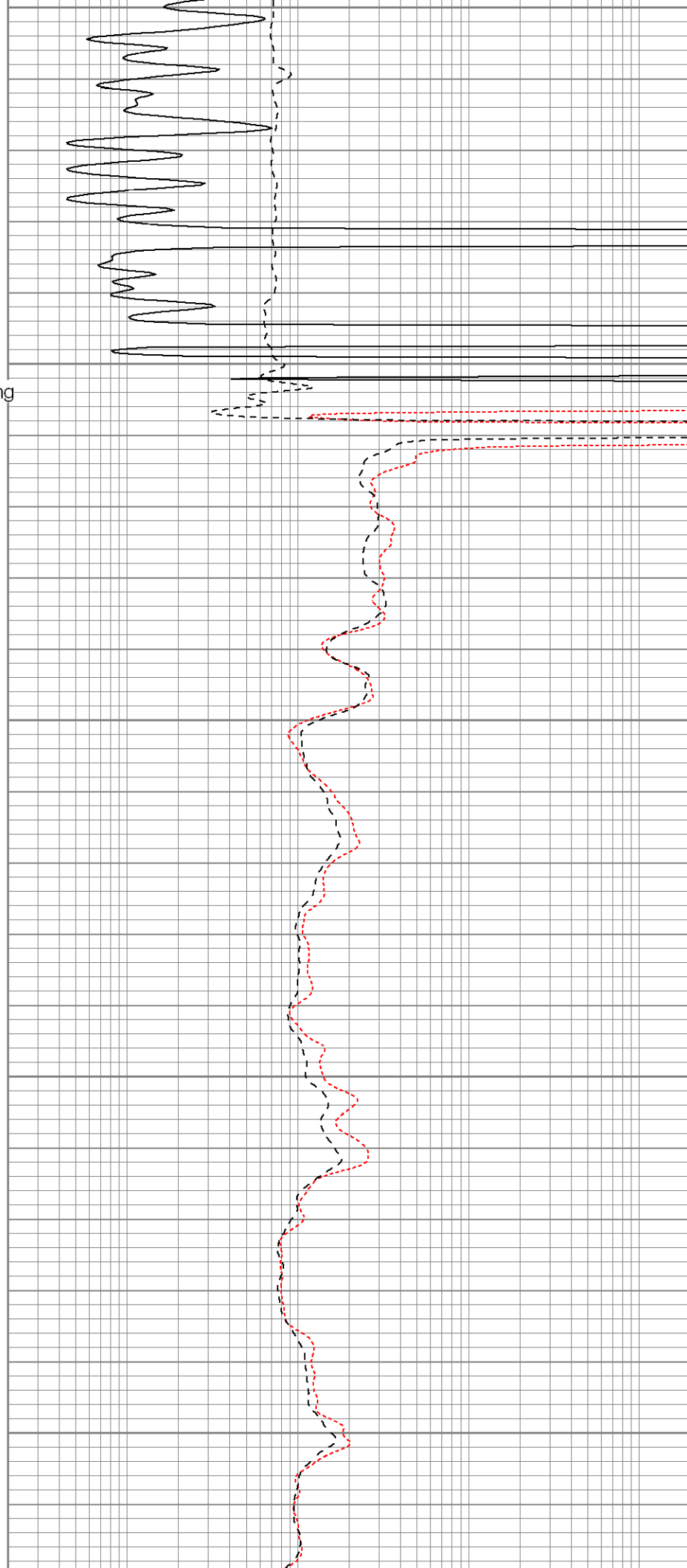


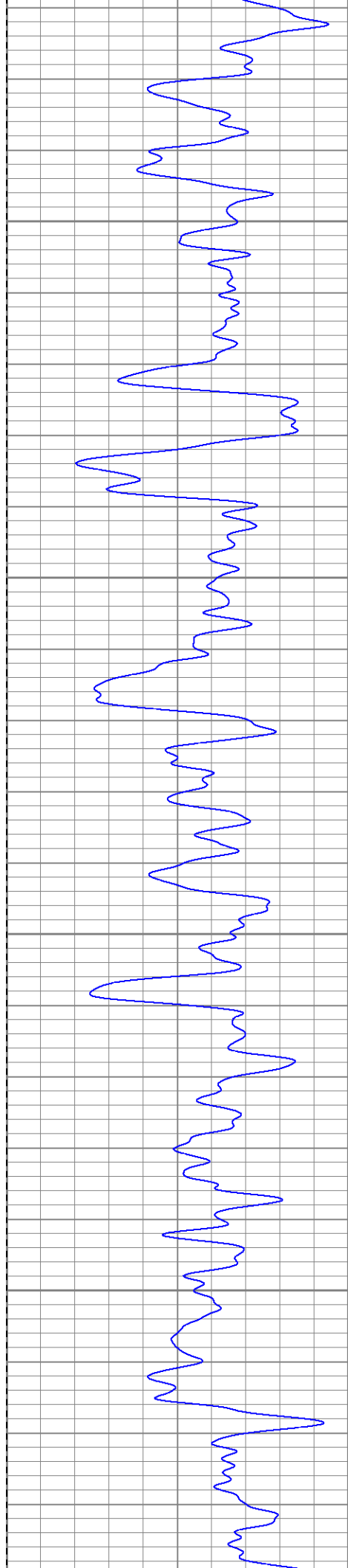
400
450
Surface Casing

500

550

600



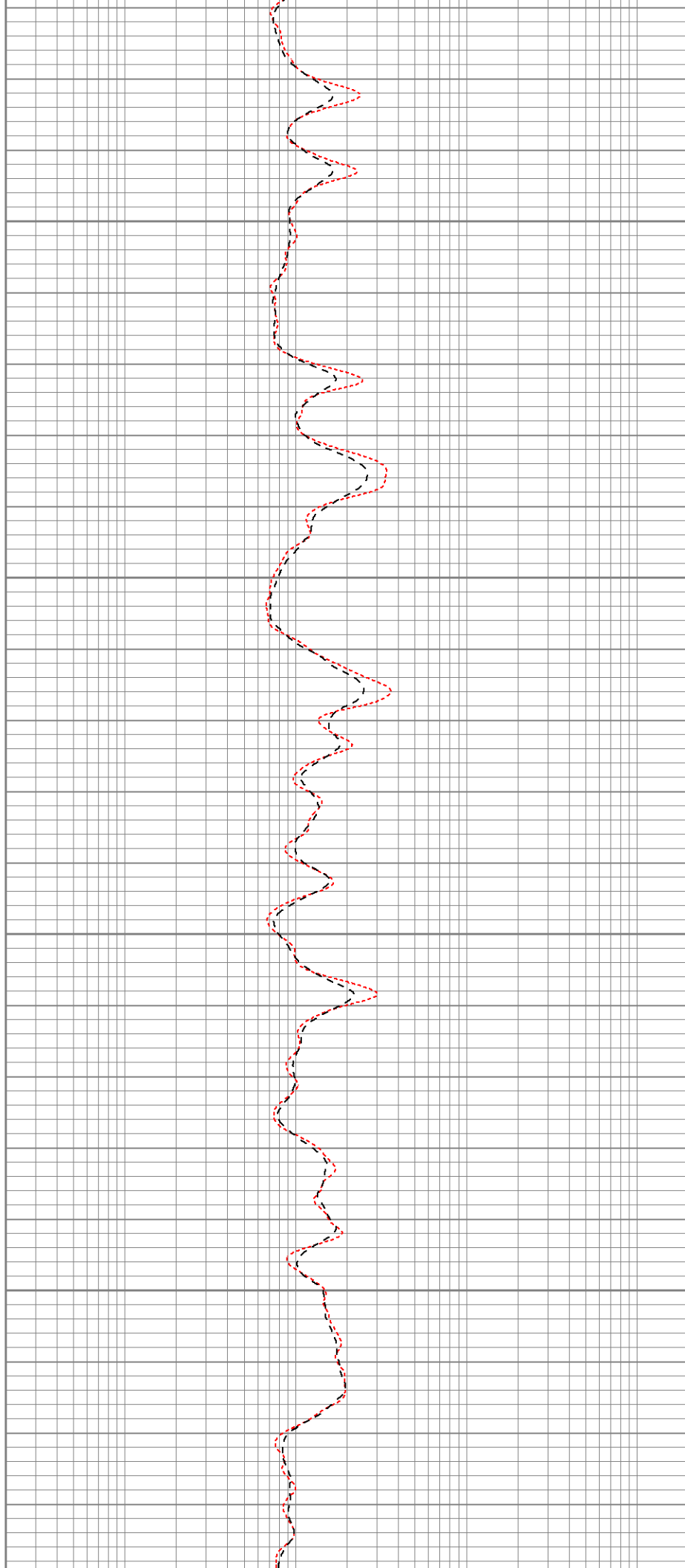


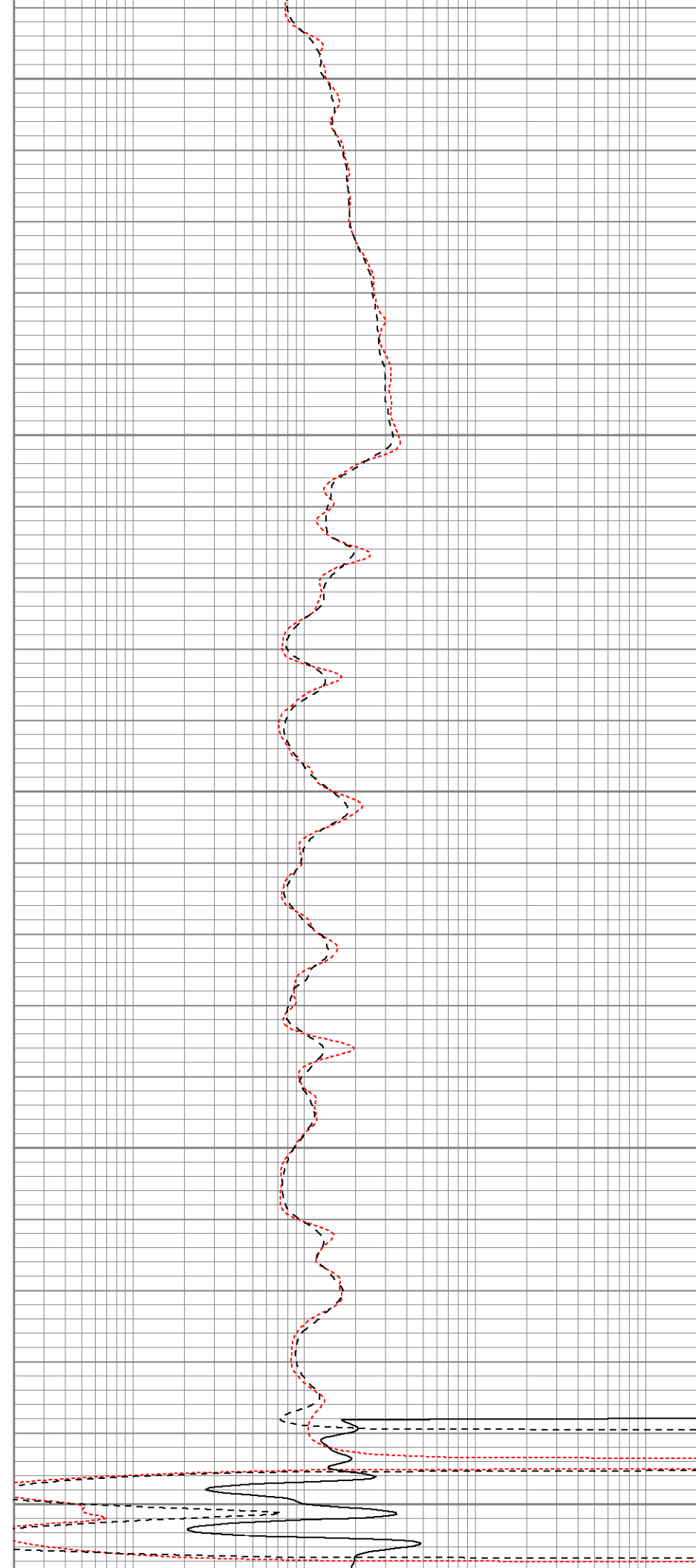
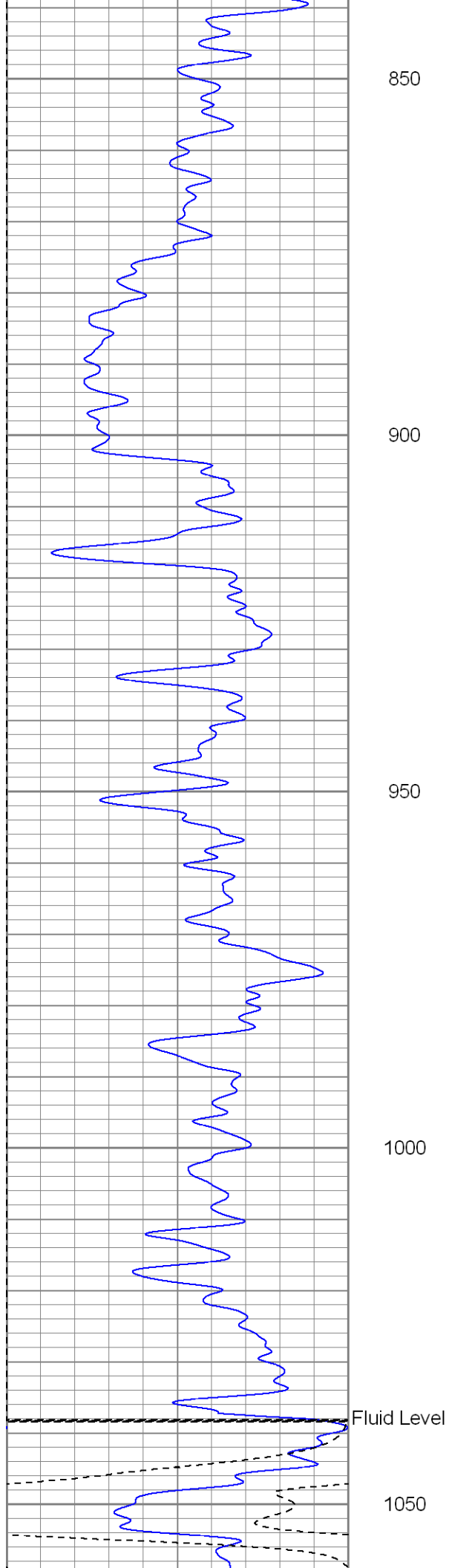
650

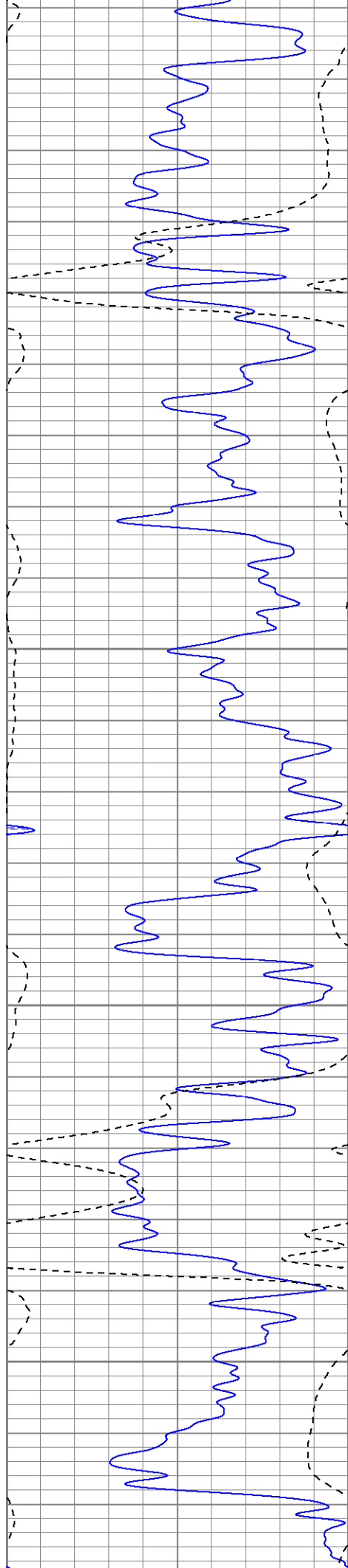
700

750

800





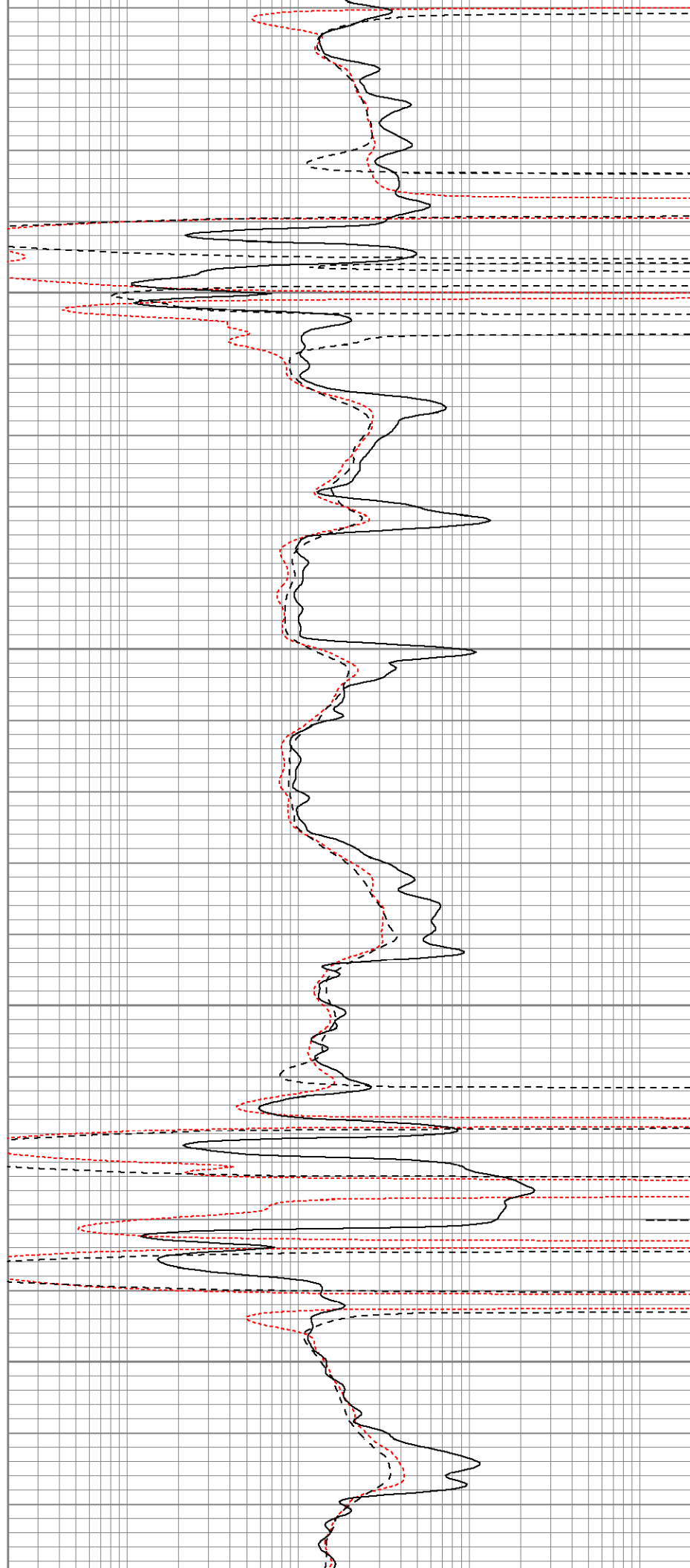


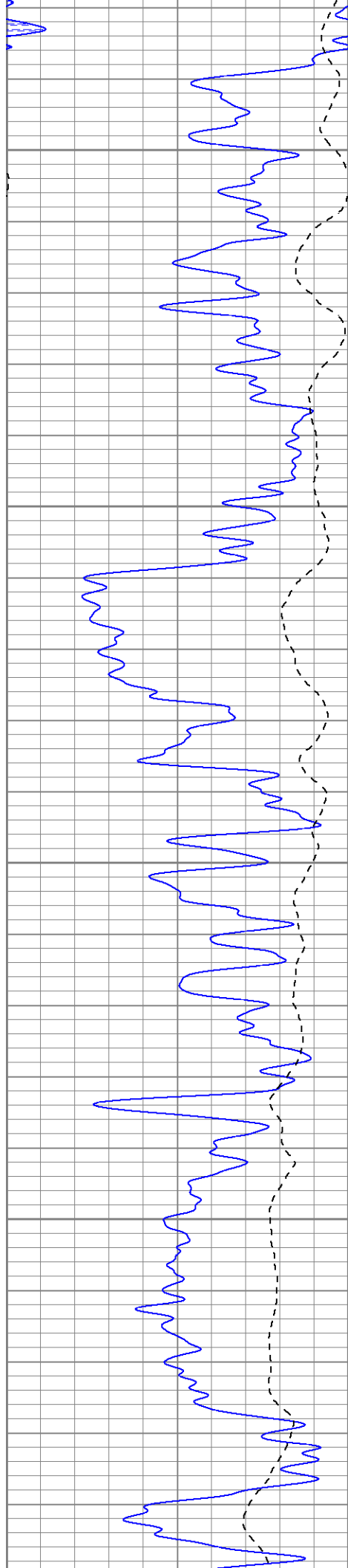
1100

1150

1200

1250



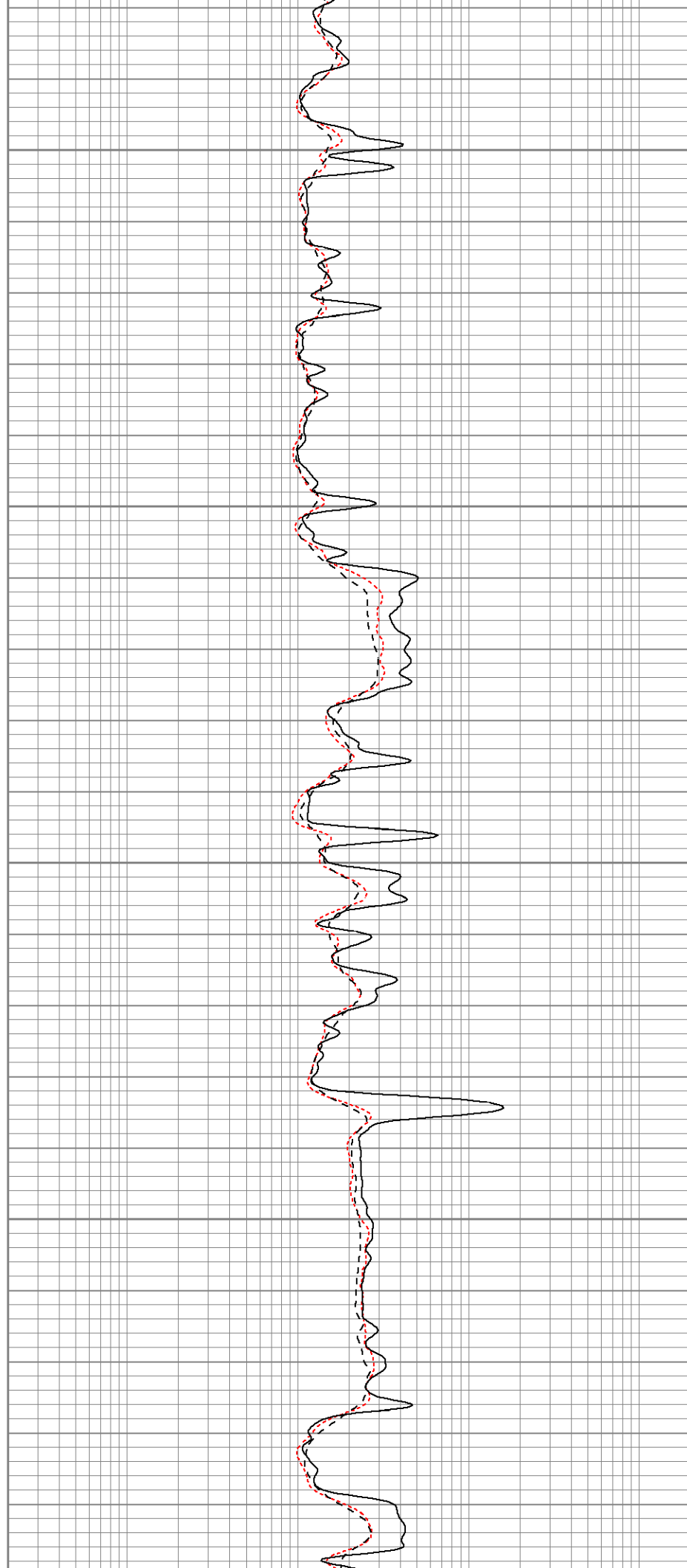


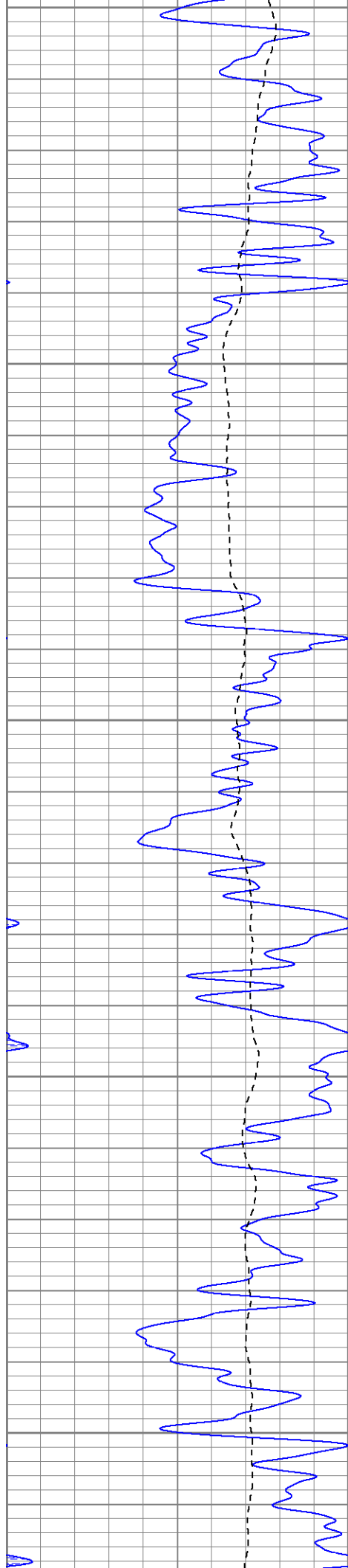
1300

1350

1400

1450





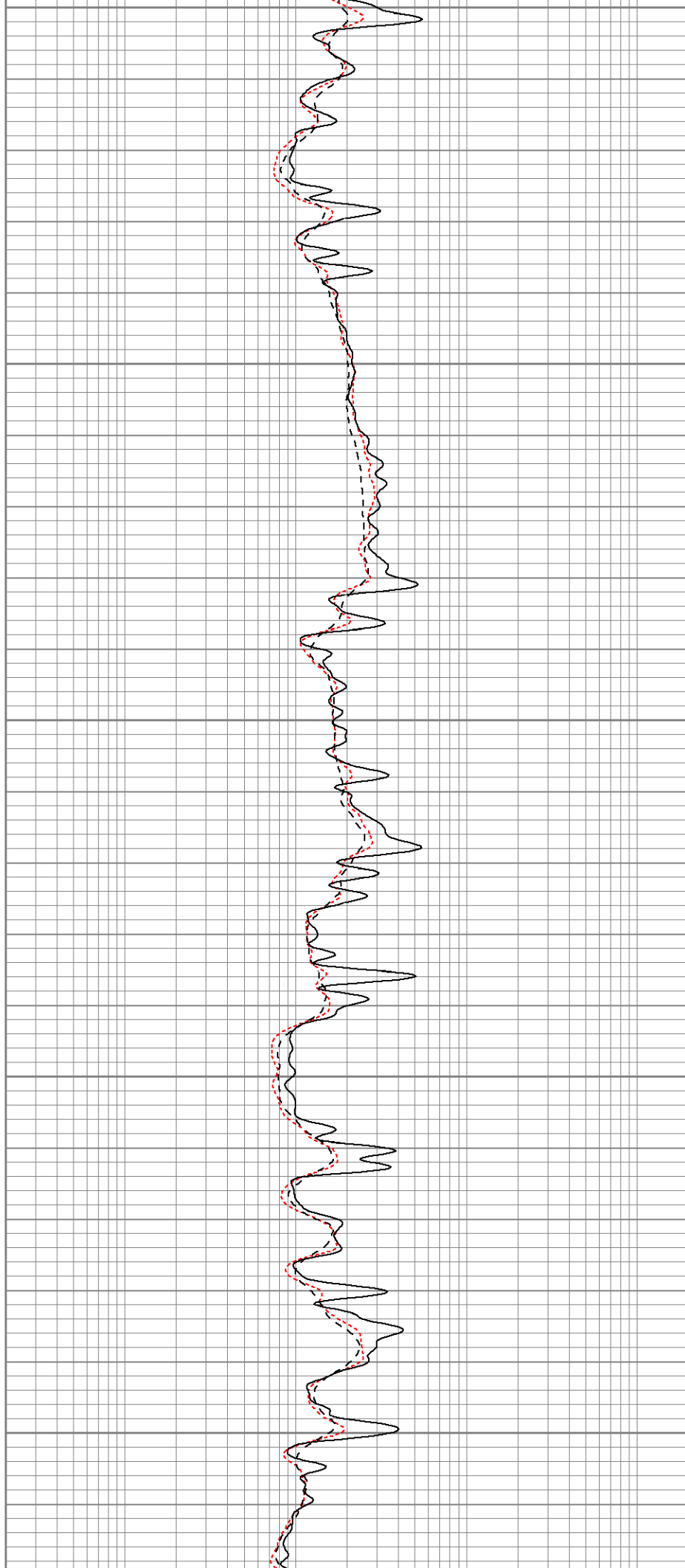
1500

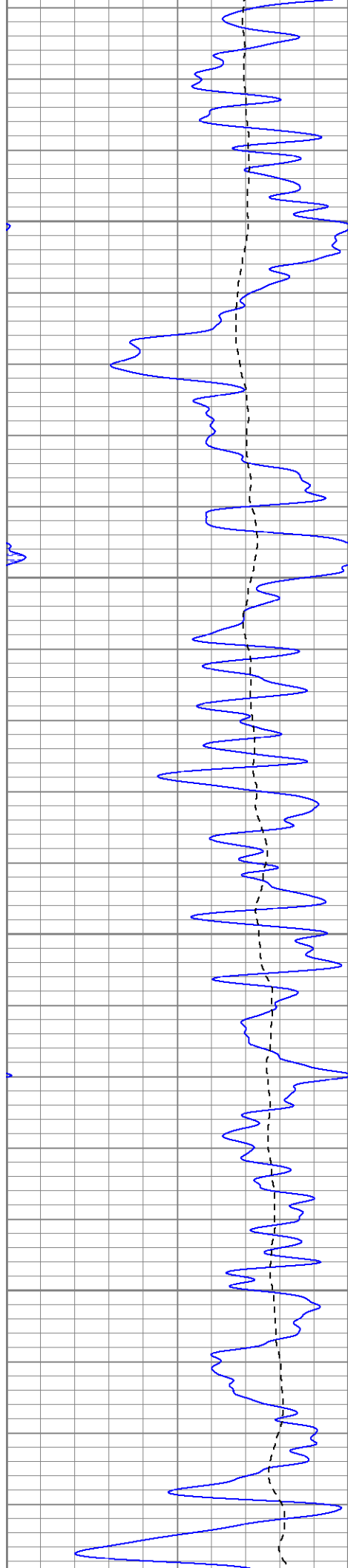
1550

1600

1650

1700



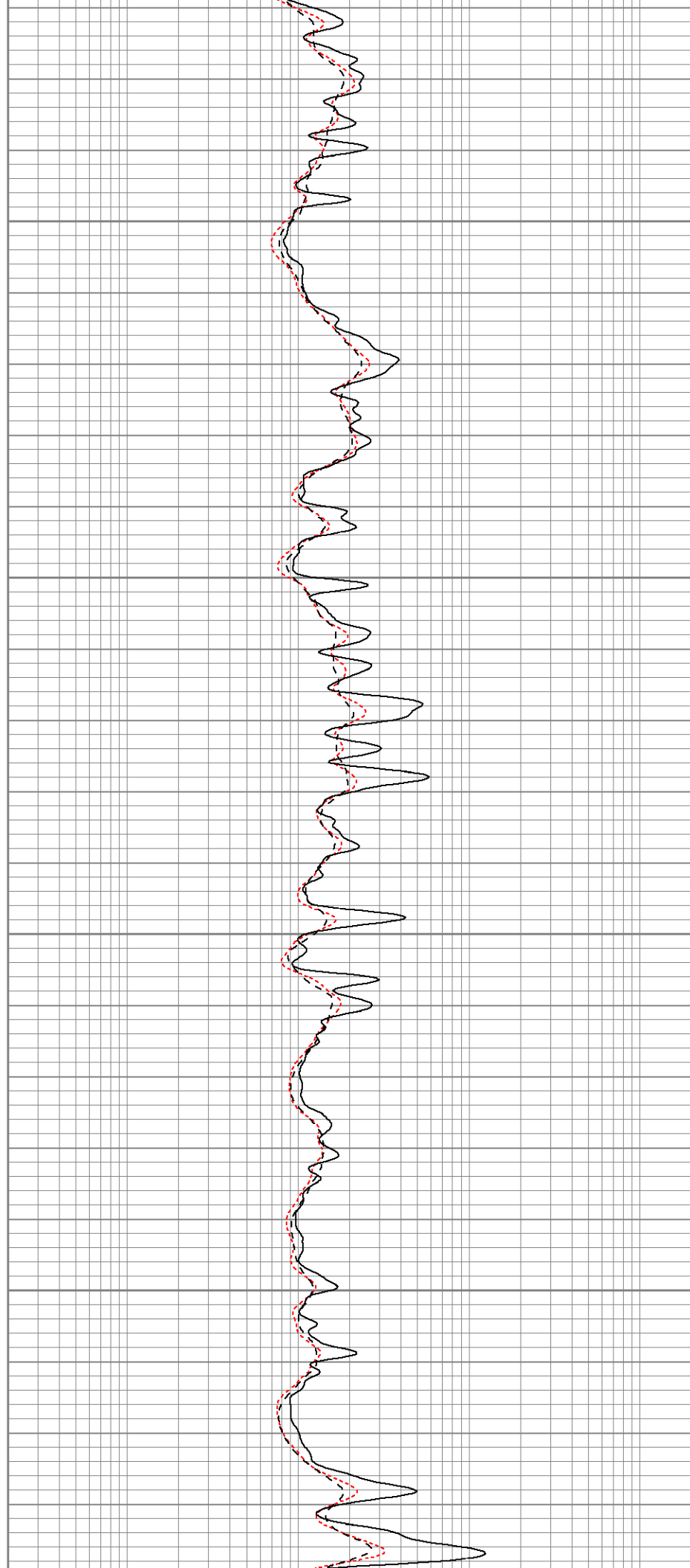


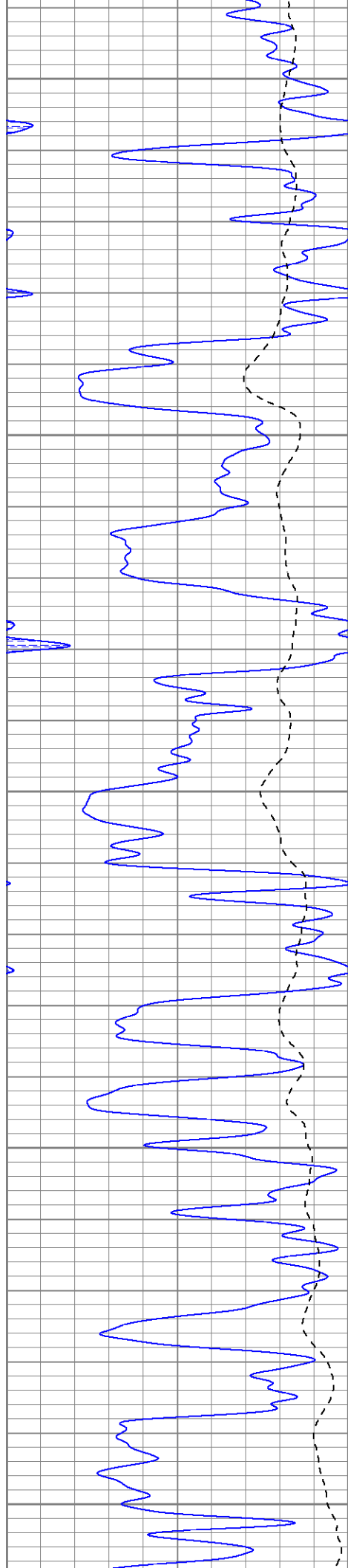
1750

1800

1850

1900





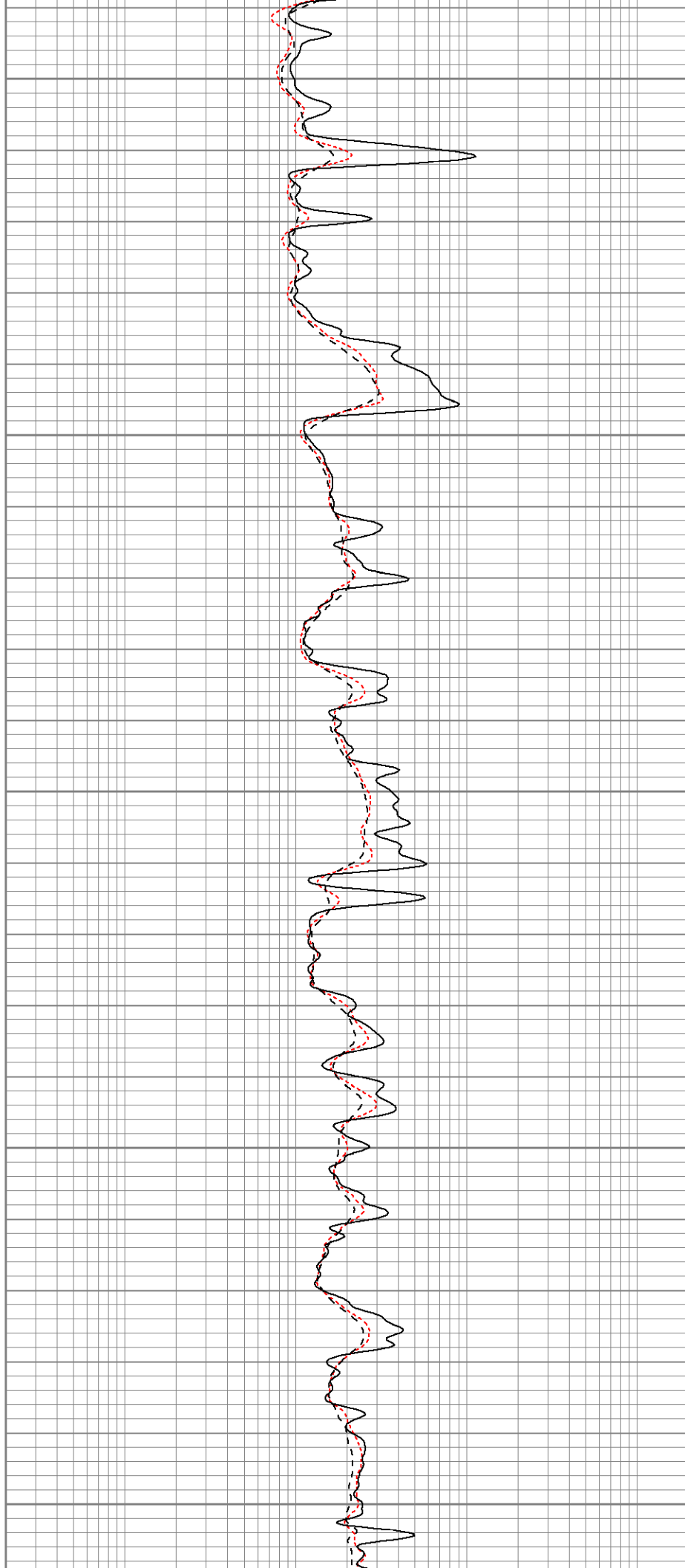
1950

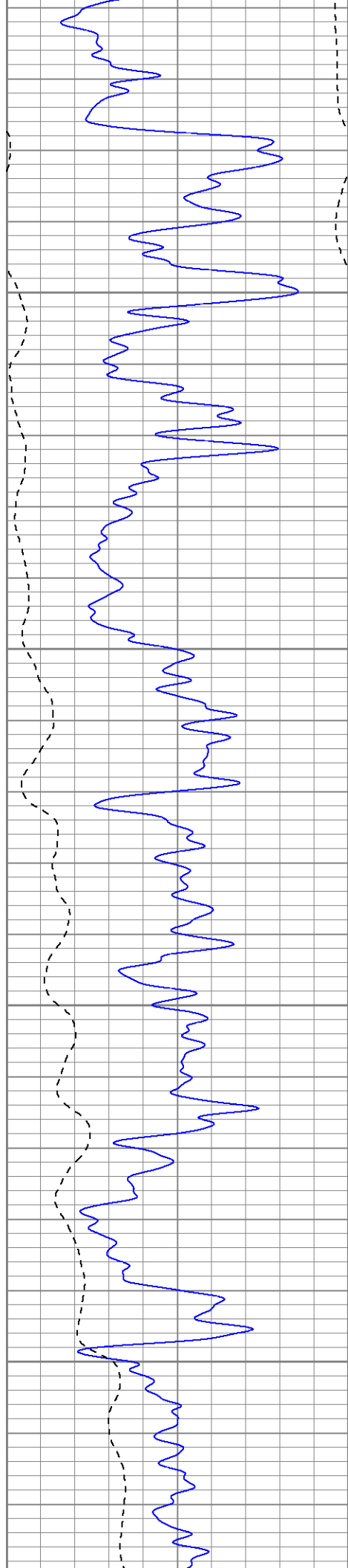
2000

2050

2100

2150



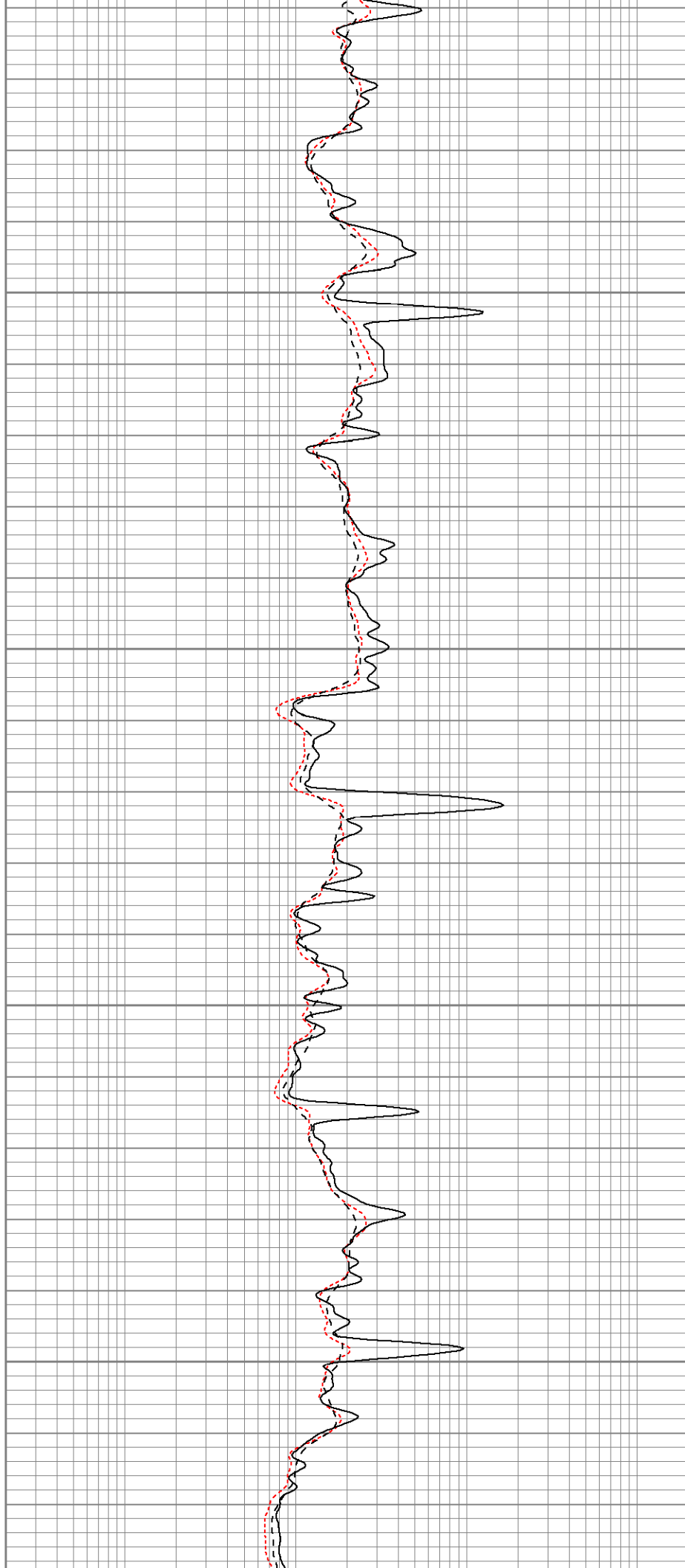


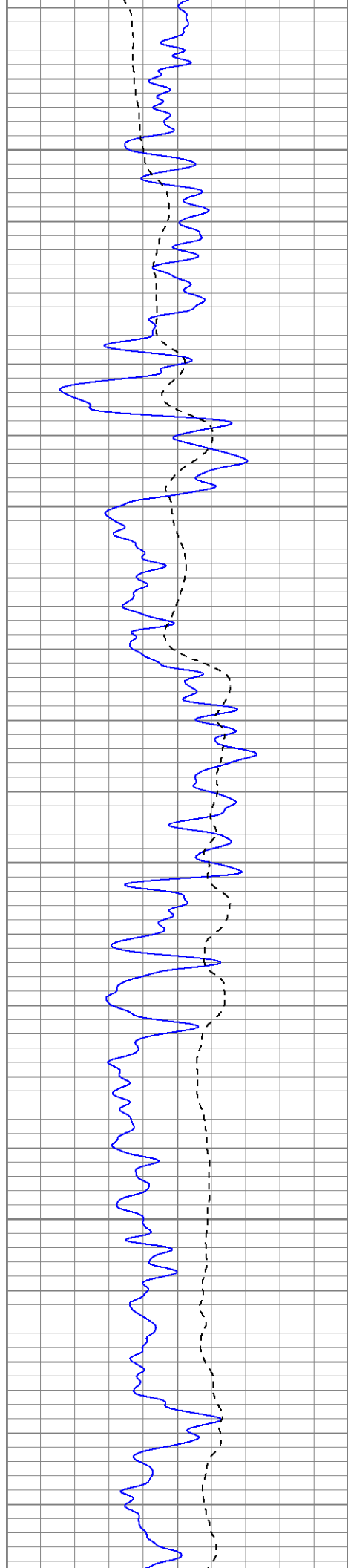
2200

2250

2300

2350



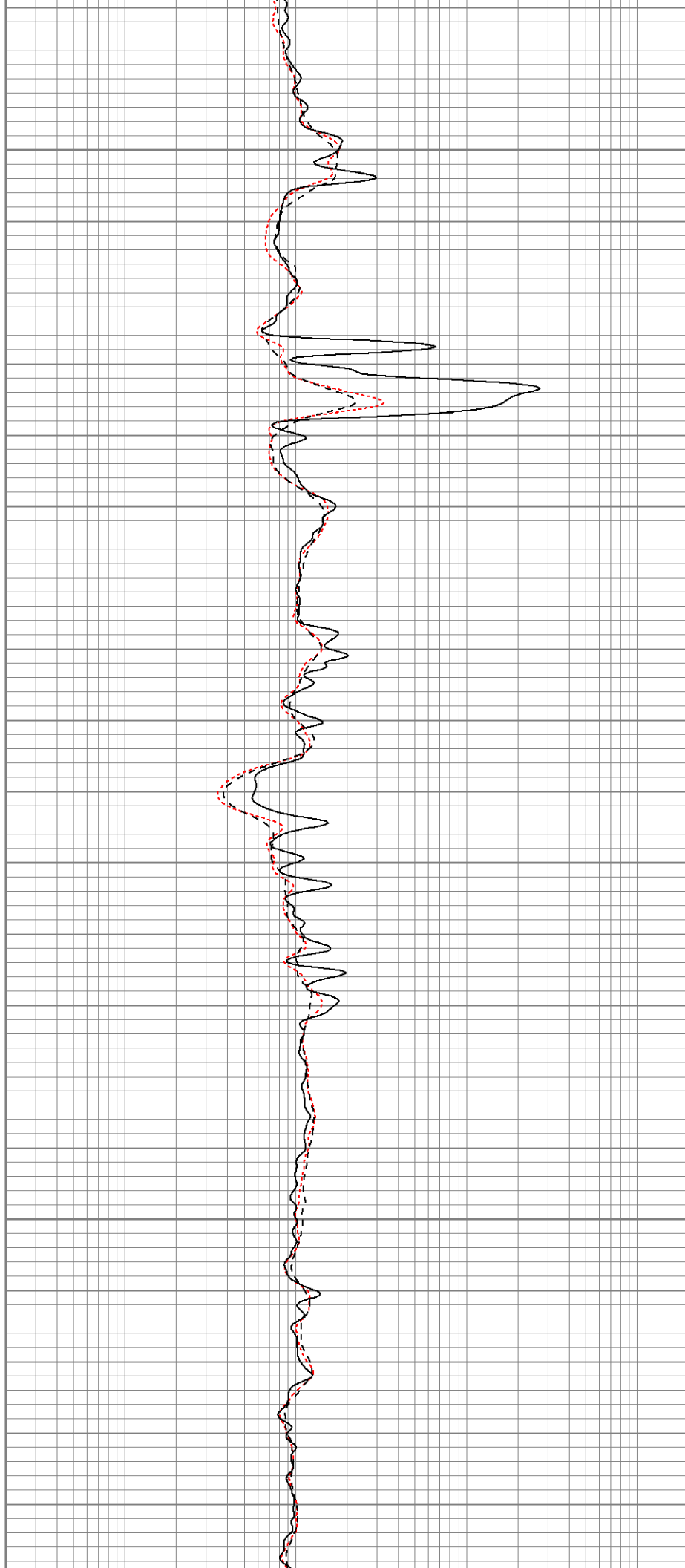


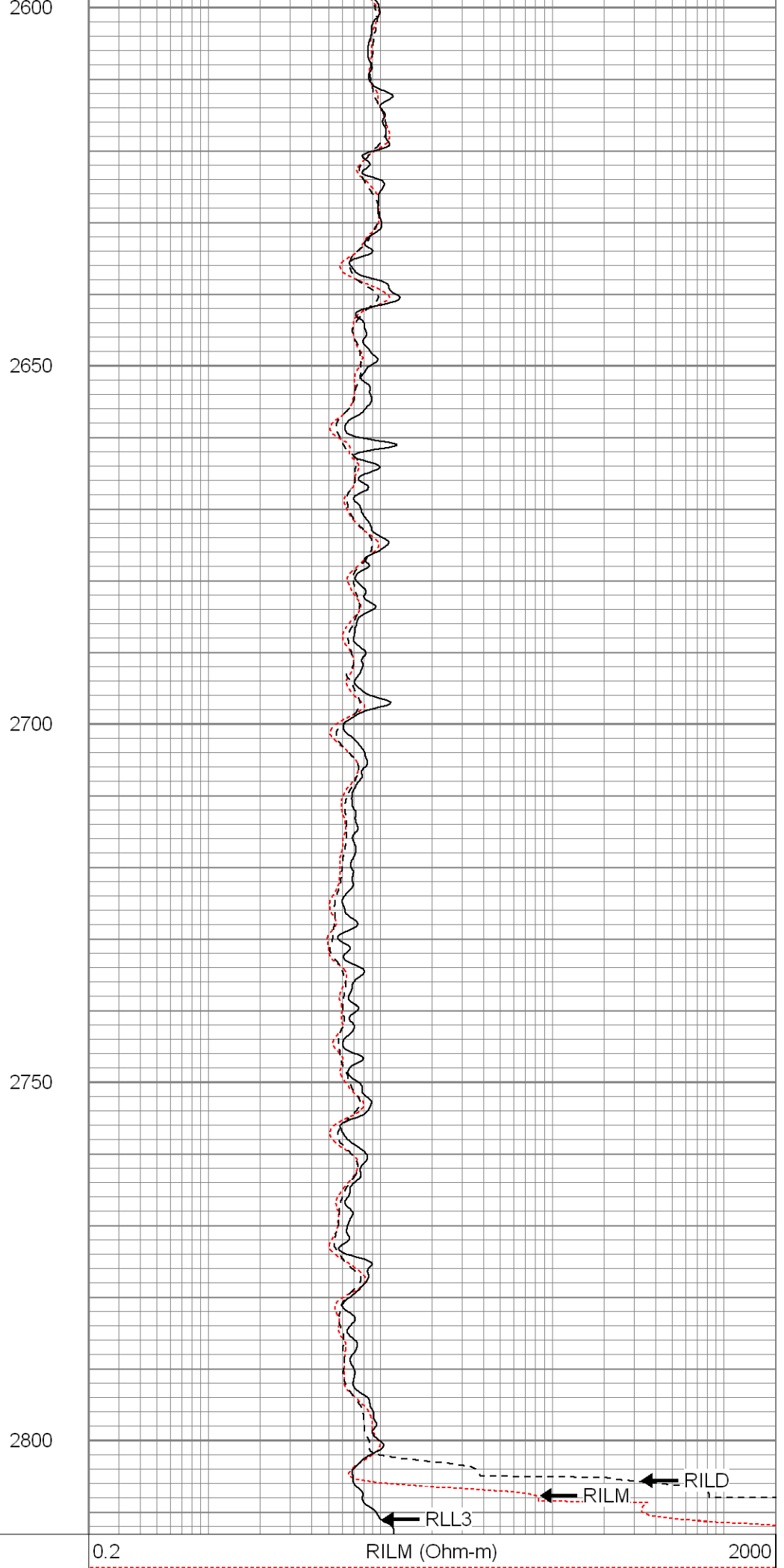
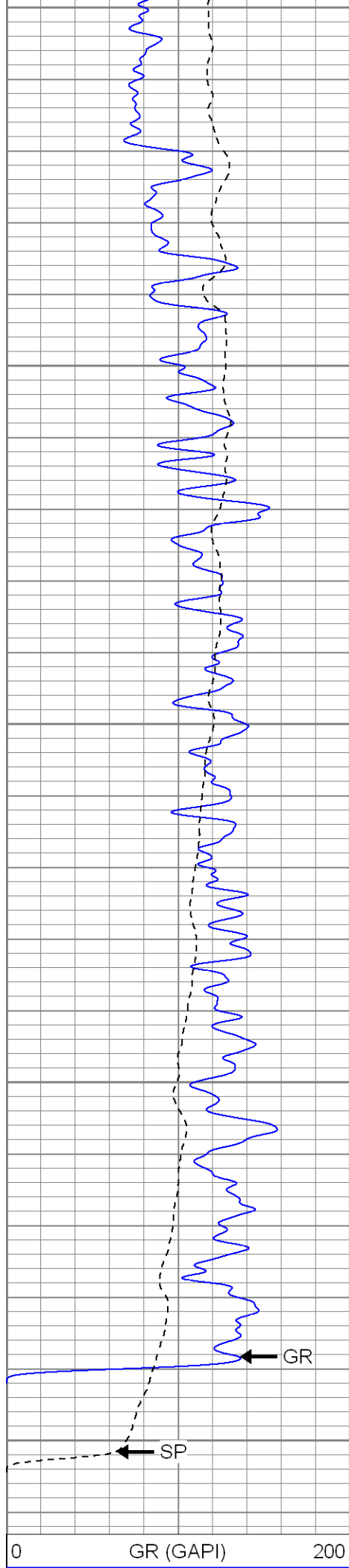
2400

2450

2500

2550





0	SP (mV)	200
<hr/>		

0.2	RILD (Ohm-m)	2000
0.2	RLL3 (Ohm-m)	2000
<hr/>		

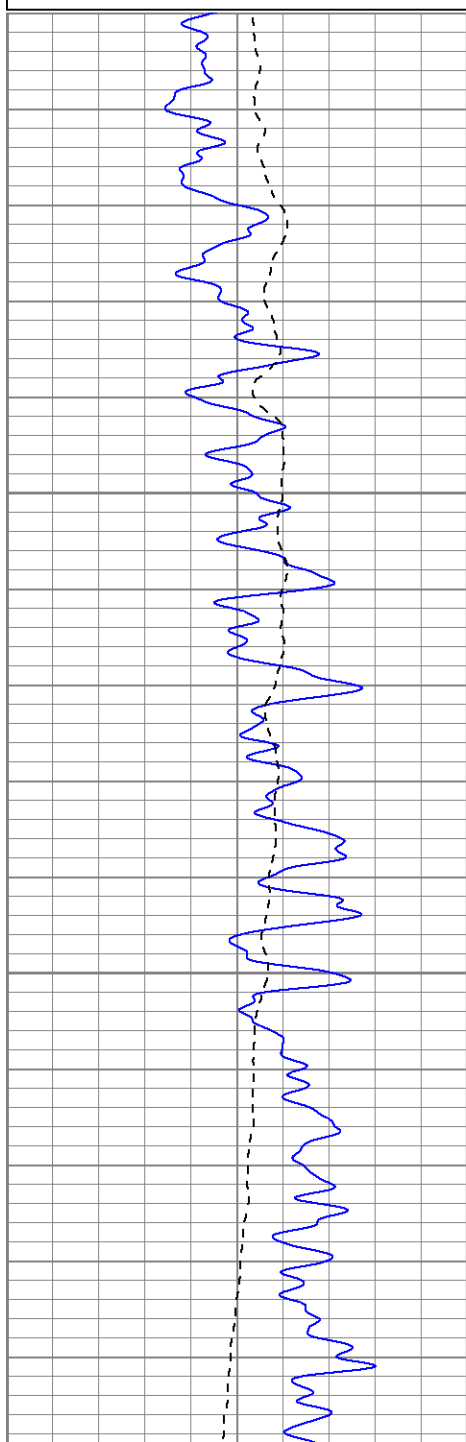


Repeat Section

Database File: hillranch01-08.db
 Dataset Pathname: pass1
 Presentation Format: dil
 Dataset Creation: Fri Feb 05 03:22:37 2010 by Log Open-Cased 071220
 Charted by: Depth in Feet scaled 1:240

0	GR (GAPI)	200
0	SP (mV)	200
<hr/>		

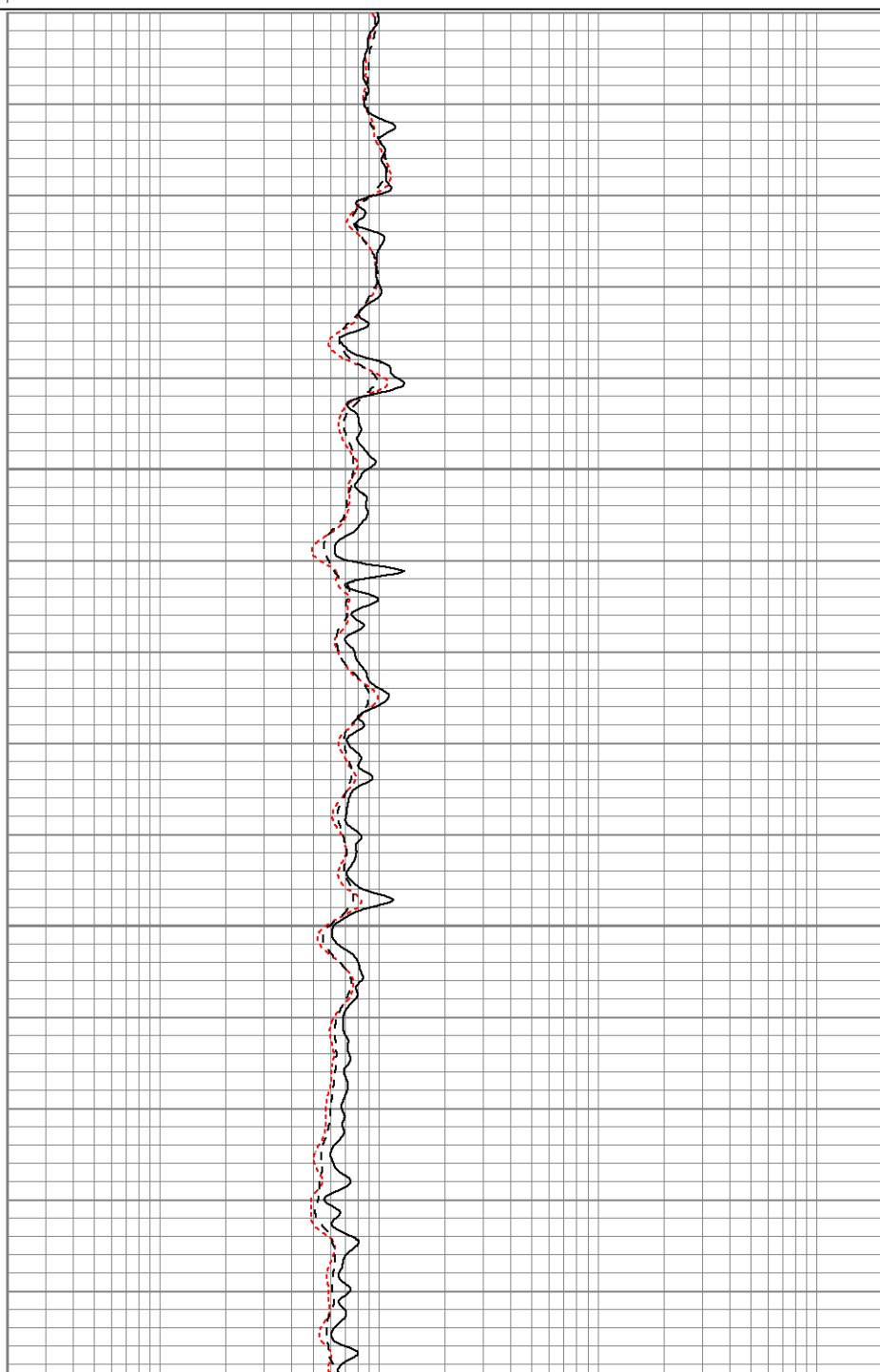
0.2	RILM (Ohm-m)	2000
0.2	RILD (Ohm-m)	2000
0.2	RLL3 (Ohm-m)	2000
<hr/>		

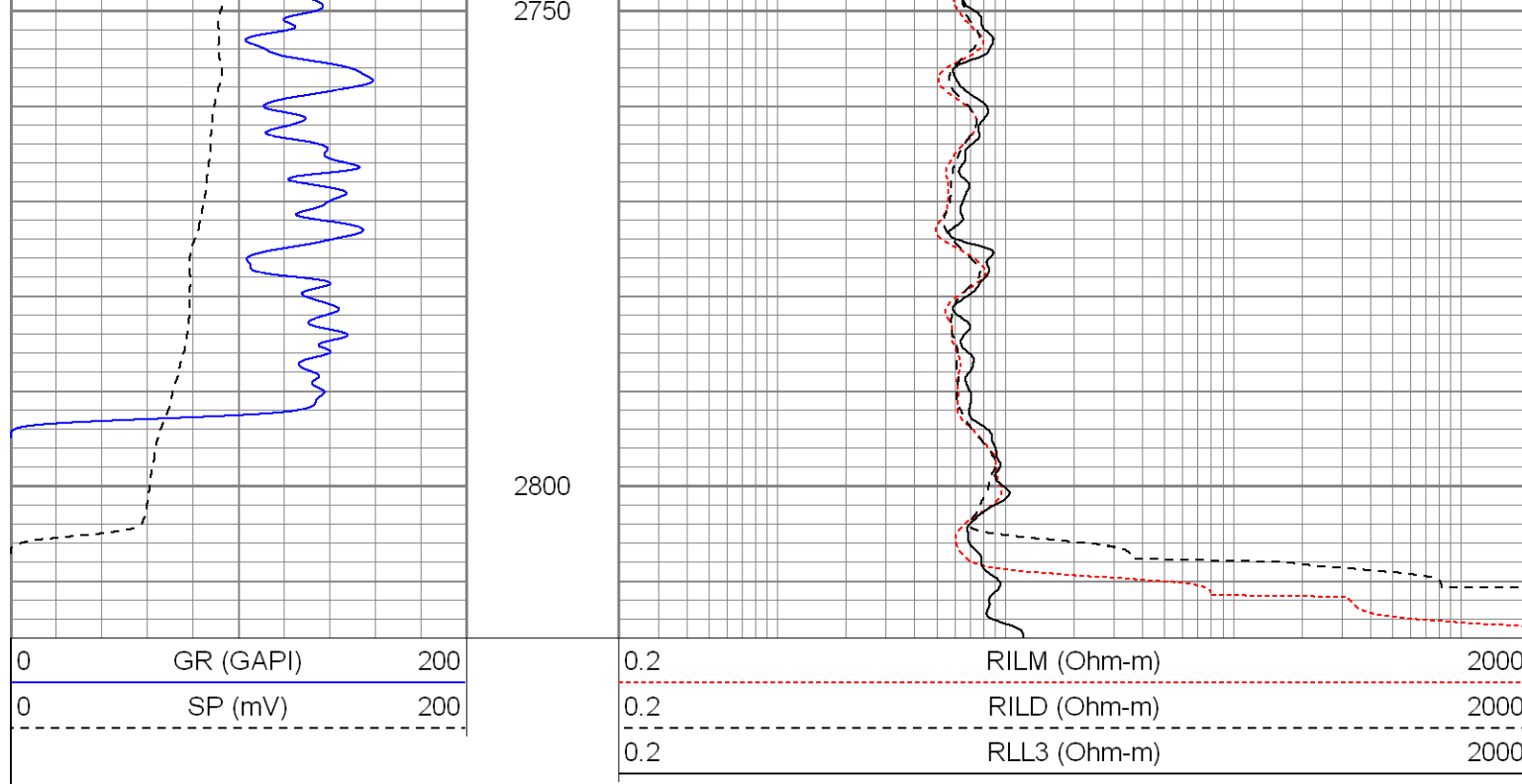


2000

2650

2700





Calibration Report

Database File: hillranch01-08.db
Dataset Pathname: pass2
Dataset Creation: Fri Feb 05 03:27:02 2010 by Log Open-Cased 071220

Dual Induction Calibration Report

Serial-Model: 080522-Probe
Surface Cal Performed: Fri Feb 05 03:17:32 2010
Downhole Cal Performed: Fri Feb 05 03:18:13 2010
After Survey Verification Performed: Fri Feb 05 03:18:14 2010

Surface Calibration

Readings			References			Results		
Loop:	Air	Loop		Air	Loop		m	b
Deep	-0.000	0.638	V	0.000	400.000	mmho-m	626.108	0.275
Medium	0.001	0.741	V	0.000	464.000	mmho-m	626.617	-0.390
Internal:	Zero	Cal		Zero	Cal		m	b
Deep	-0.001	0.638	V	0.000	400.000	mmho-m	625.917	0.554
Medium	0.000	0.741	V	0.000	464.000	mmho-m	626.730	-0.161

Downhole Calibration

	Readings			References			Results	
	Zero	Cal		Zero	Cal		m'	b'
Deep	-0.015	399.656	mmho-m	-0.279	399.843	mmho-m	1.001	-0.264
Medium	0.142	463.694	mmho-m	-0.229	463.686	mmho-m	1.001	-0.371
LL3		7.363	V		750.000	Ohm-m		
		-0.000	V		12.000	Ohm-m		
		-7.262	V		3745.000	mmho-m		

Gamma Ray Calibration Report

Serial Number: 2000
Tool Model: P2000
Performed: Fri Feb 05 03:18:30 2010

Performed:

Fri Feb 03 03:18:39 2010

Calibrator Value:

1.0

GAPI

Background Reading:

0.0

cps

Calibrator Reading:


1.0

cps

Sensitivity:

0.2700

GAPI/cps

Sensor	Offset (ft)	Schematic	Description	Len (ft)	OD (in)	Wt (lb)				
GR	22.89		None	0.75	1.50	5.00				
			GR-P2000 (2000)	3.67	3.25	40.00				
CILD	10.60		DIL-Probe (080522) Probe Dual Induction	21.47	4.00	345.00				
SP	10.60									
CILM	6.89									
RLL3	1.70									
Dataset:			hillranch01-08.db: field/well/run1/pass2							
Total Length:			25.89 ft							
Total Weight:			390.00 lb							
O.D.			4.00 in							