



DUAL INDUCTION LOG

Company XTO Energy Inc.
Well Hill Ranch 31-16
Field Purgatorie River
County Las Animas State CO

Location: API # : 05 071 09568 00

1213' FSL & 381' FEL

SEC 31 TWP 34S RGE 67W

Permanent Datum Ground Level Elevation 8228'
Log Measured From Ground Level
Drilling Measured From Ground Level

Other Services
CDL
NEU
Elevation
K.B. -----
D.F. -----
G.L. 8228'

2/1/10

Date	Run Number	One		
Depth Driller	2758'			
Depth Logger	2755'			
Bottom Logged Interval	2753'			
Top Log Interval	Surface Casing			
Casing Driller	451'			
Casing Logger	457'			
Bit Size	7 7/8"			
Type Fluid in Hole	water			
Density / Viscosity	///			
pH / Fluid Loss	///			
Source of Sample	///			
Rm @ Meas. Temp	///			
Rmf @ Meas. Temp	///			
Rmc @ Meas. Temp	///			
Source of Rmf / Rmc	///			
Rm @ BHT	///			
Time Circulation Stopped	6:30 p.m.			
Time Logger on Bottom	9:00 p.m.			
Maximum Recorded Temperature	116F			
Equipment Number	M5			
Location	Trinidad			
Recorded By	Worley			
Witnessed By	Mr. Dalton King			

<<< Fold Here >>>

All interpretations are opinions based on inferences from electrical or other measurements and we cannot and do not guarantee the accuracy or correctness of any interpretation, and we shall not, except in the case of gross or willful negligence on our part, be liable or responsible for any loss, costs, damages, or expenses incurred or sustained by anyone resulting from any interpretation made by any of our officers, agents or employees. These interpretations are also subject to our general terms and conditions set out in our current Price Schedule.

Comments

XTO Hill stay on main road past Dead Horse, stay on main road past Beige Tanks, down thru Alamosa Canyon,take hard left before Big Rocks.

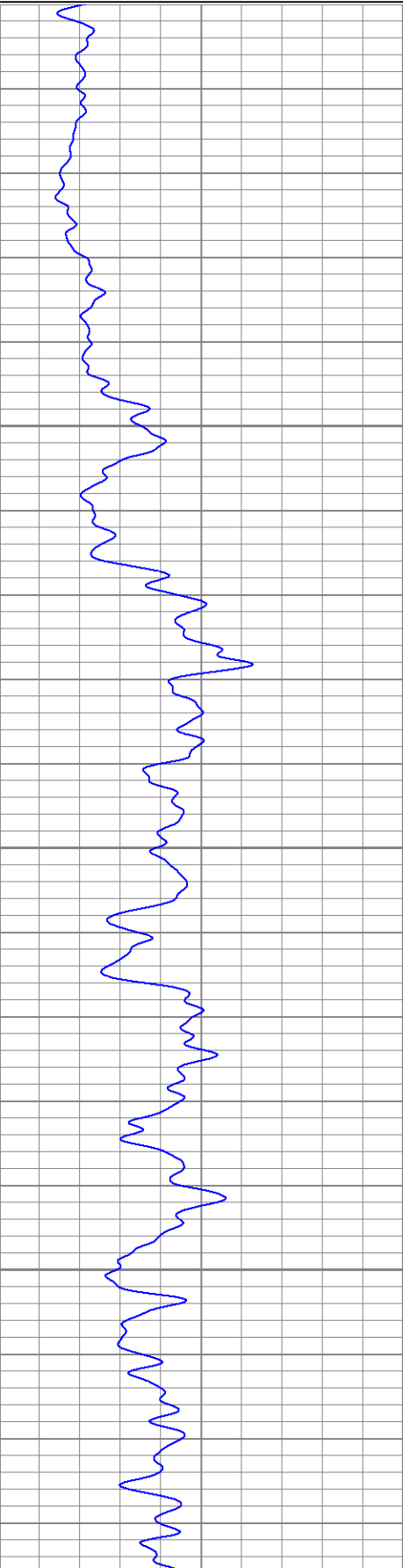


Main Pass

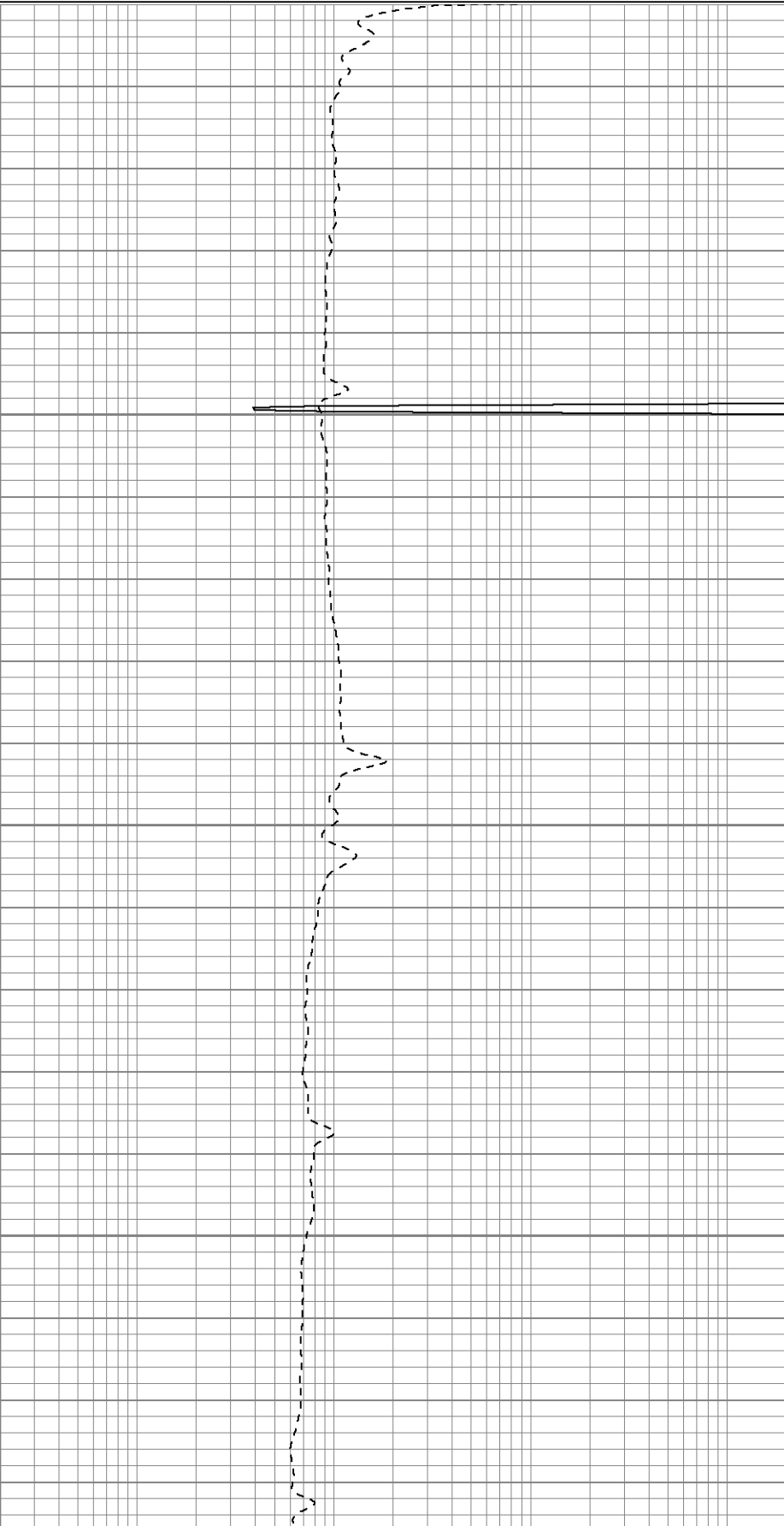
Database File: hillranch31-16.db
Dataset Pathname: pass2.1
Presentation Format: dil
Dataset Creation: Mon Feb 01 22:19:59 2010 by Calc Open-Cased 071220
Charted by: Depth in Feet scaled 1:240

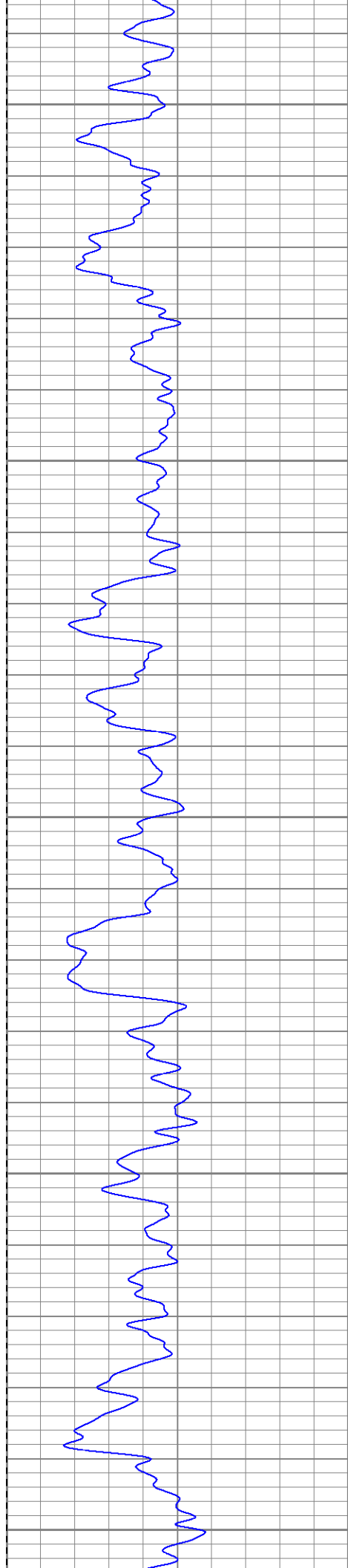
0	GR (GAPI)	200
0	SP (mV)	200

0.2	RILM (Ohm-m)	2000
0.2	RILD (Ohm-m)	2000
0.2	RLL3 (Ohm-m)	2000



0
50
100
150





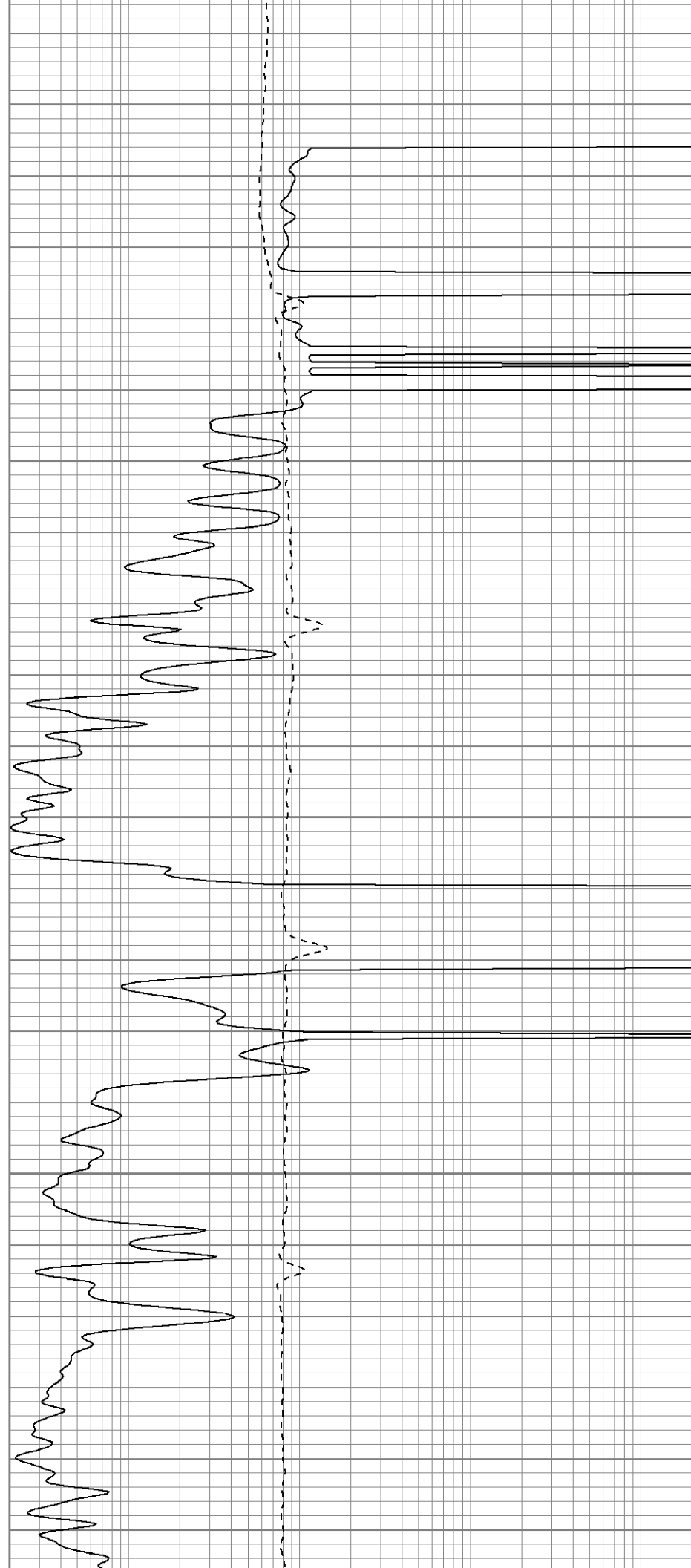
200

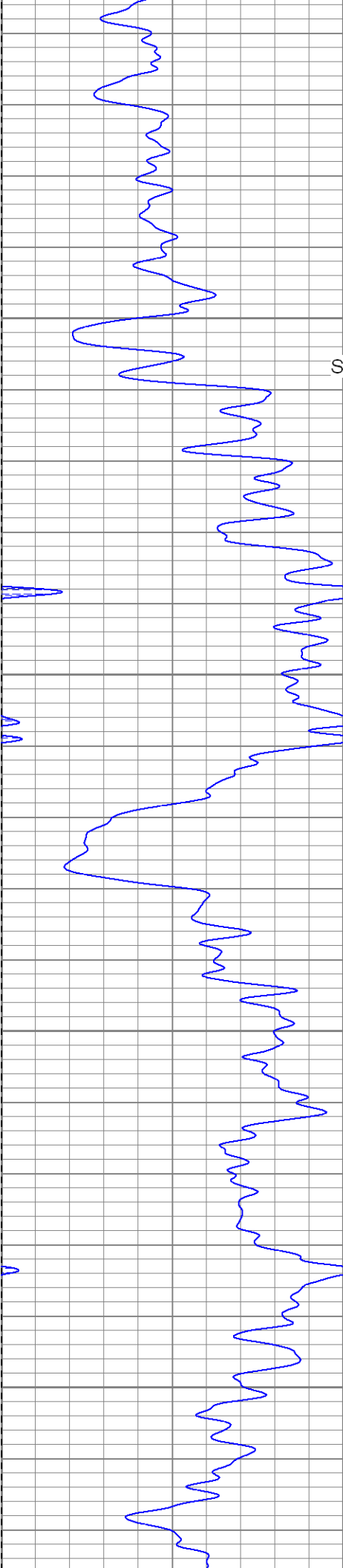
250

300

350

400



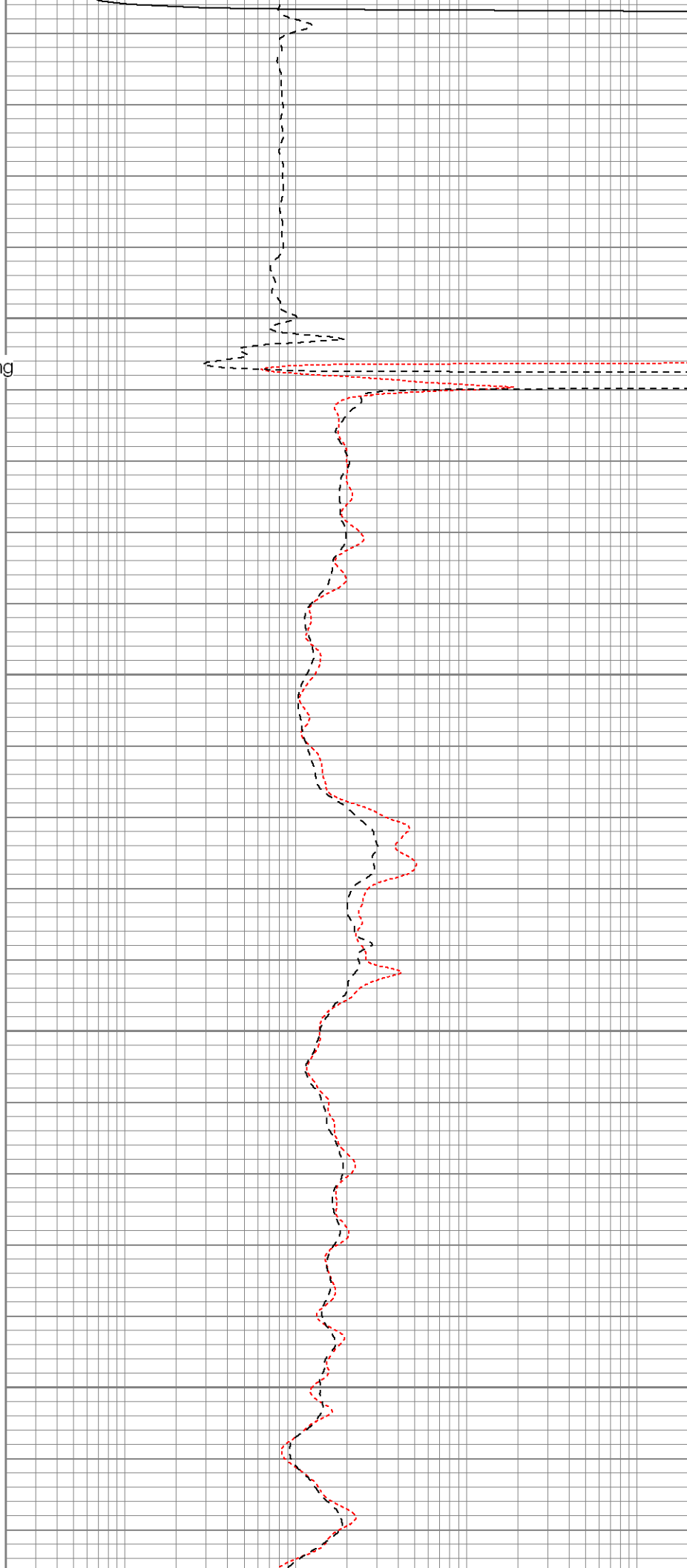


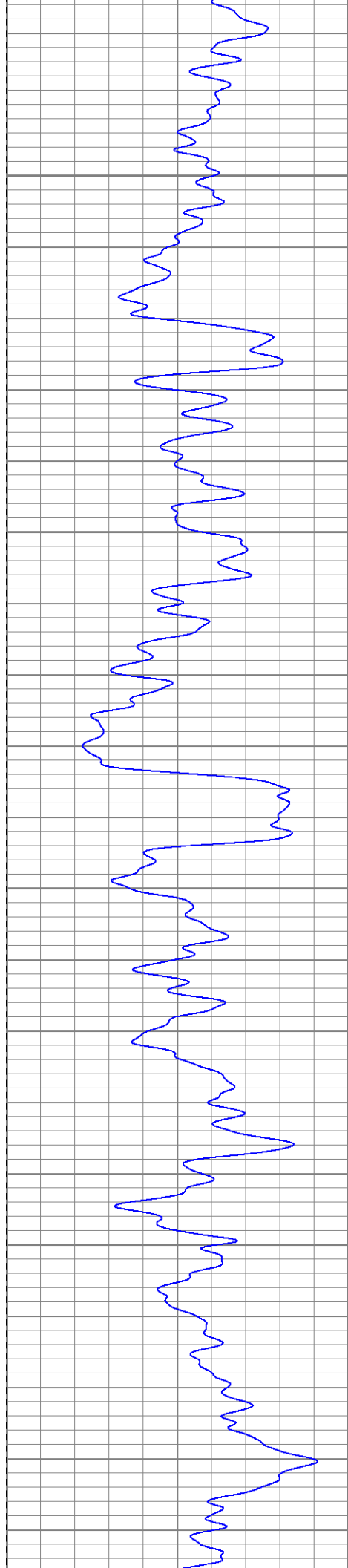
450
Surface Casing

500

550

600



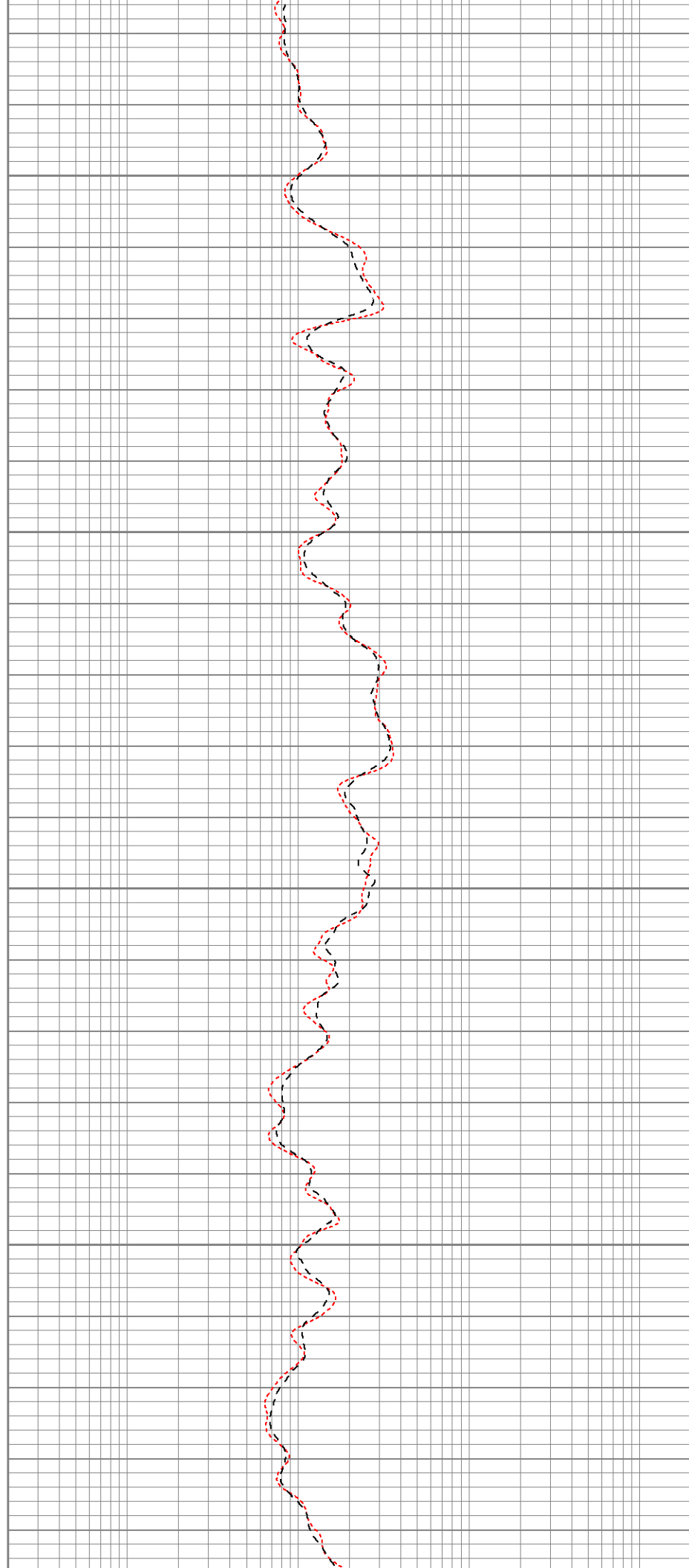


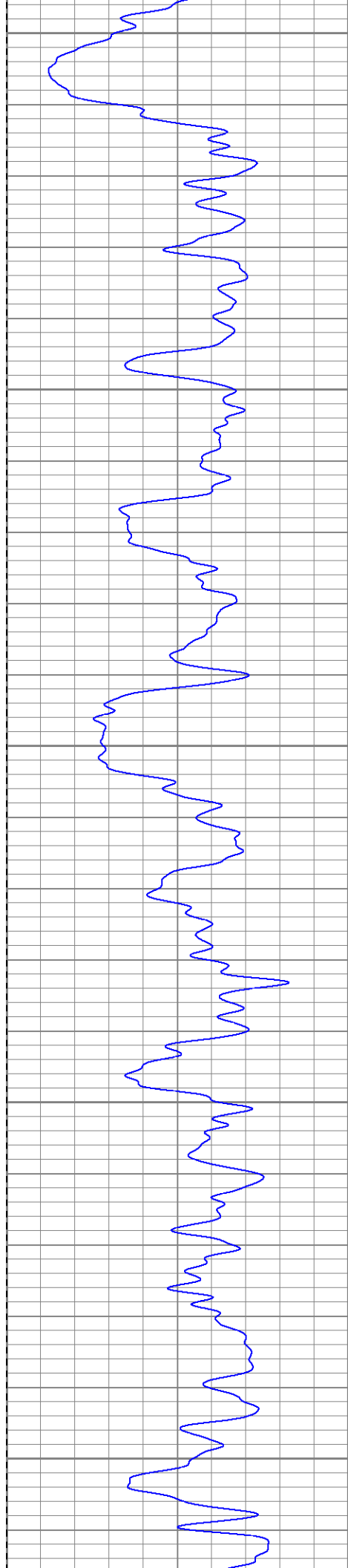
650

700

750

800





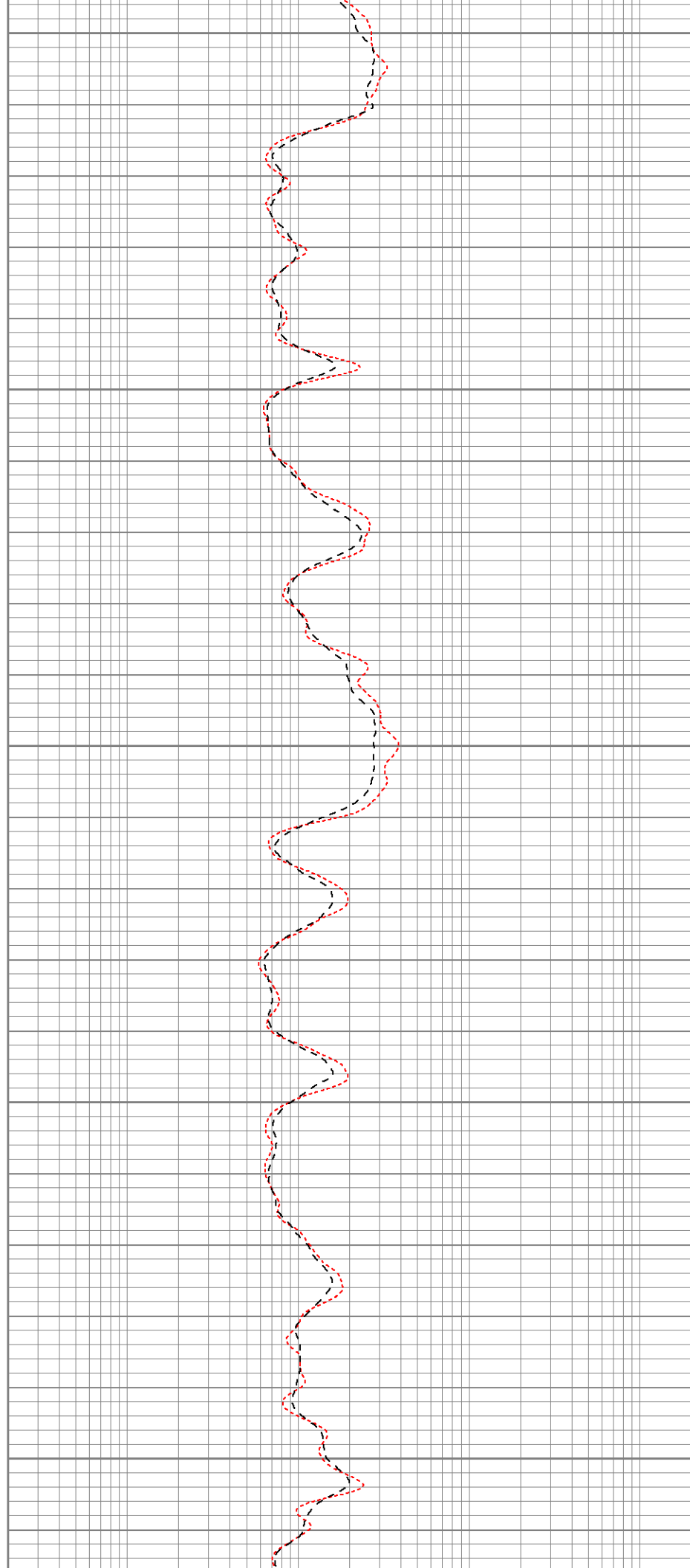
850

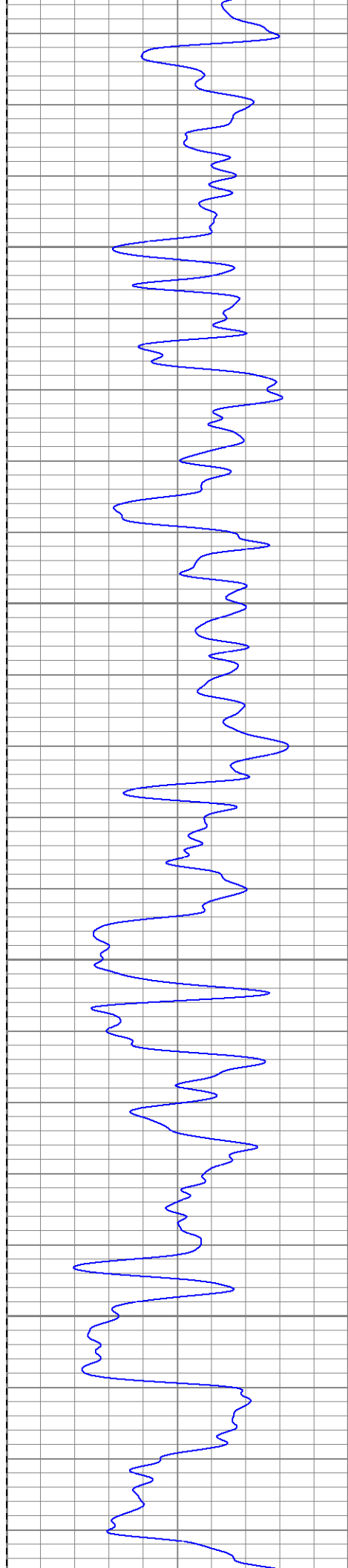
900

950

1000

1050



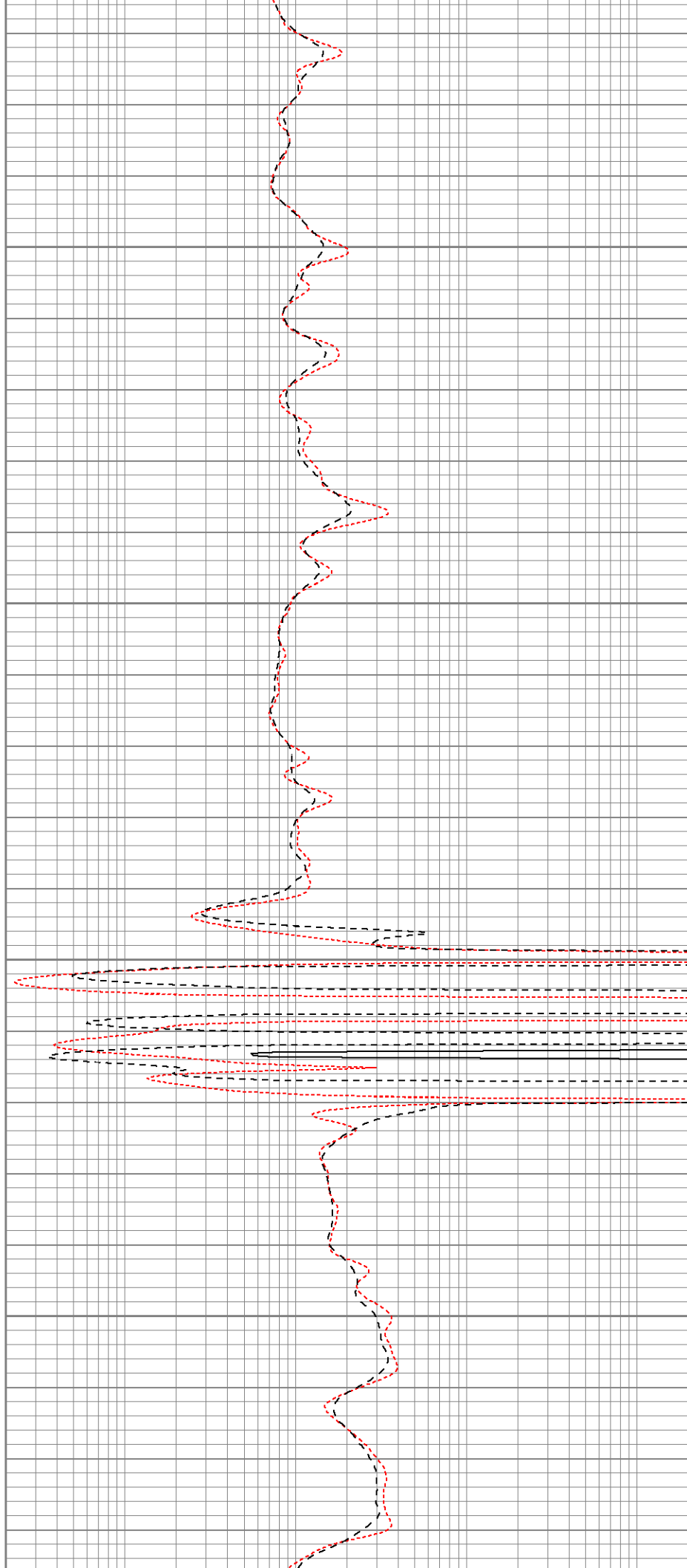


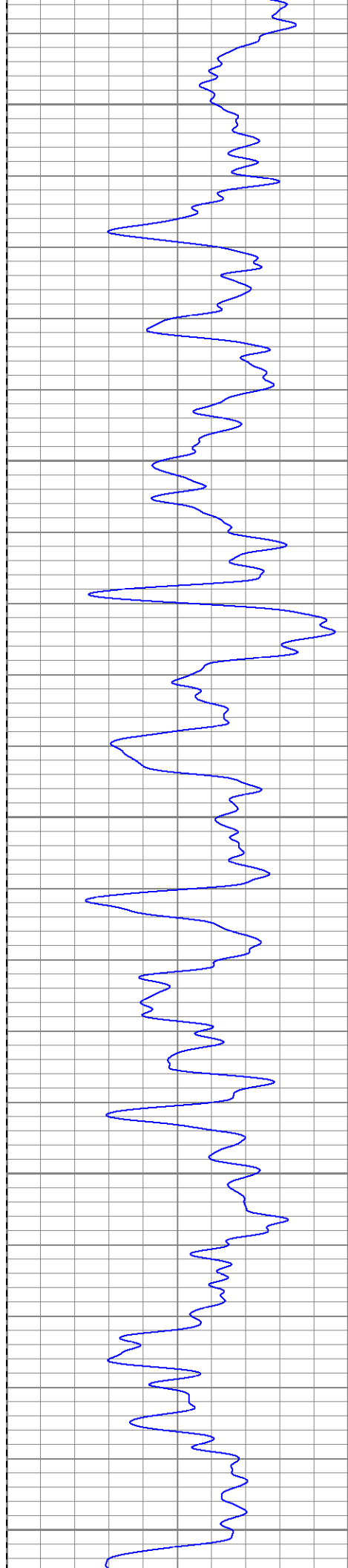
1100

1150

1200

1250





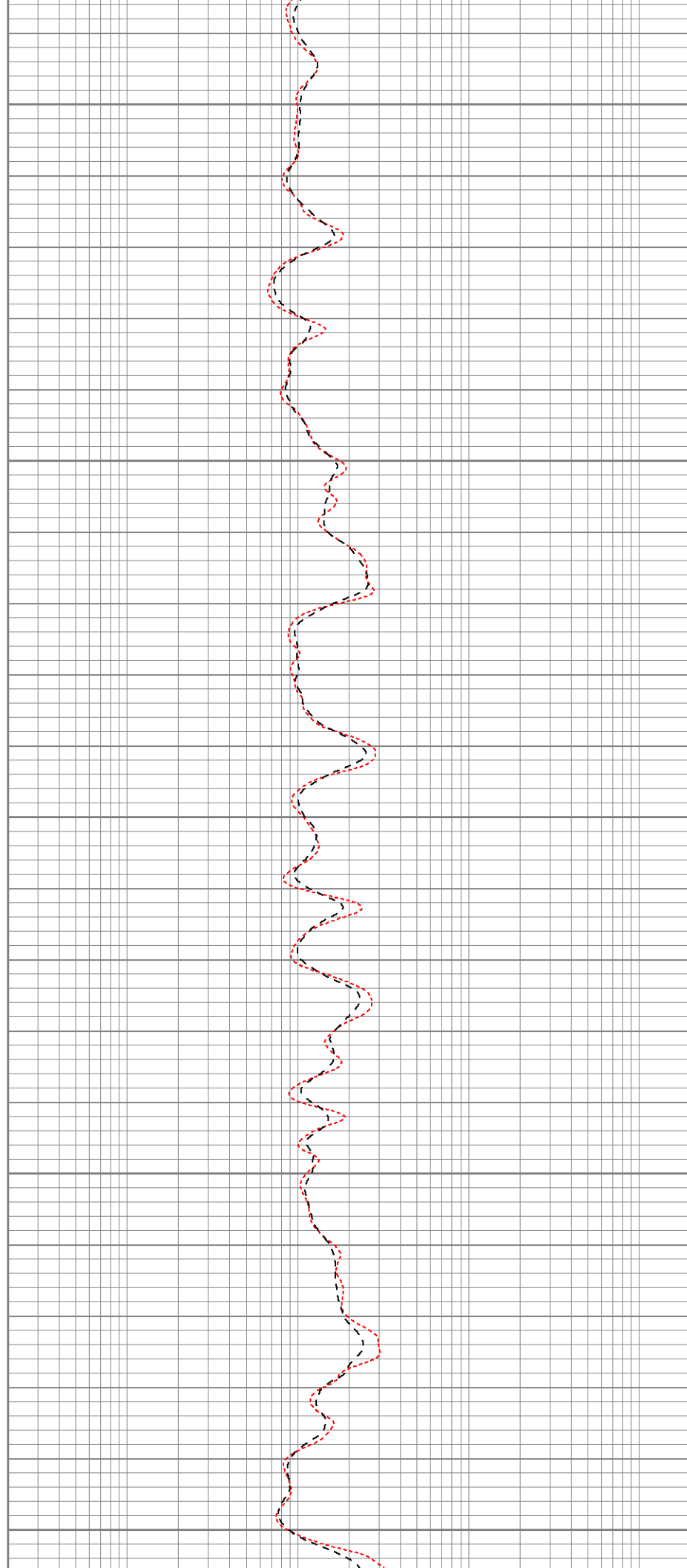
1300

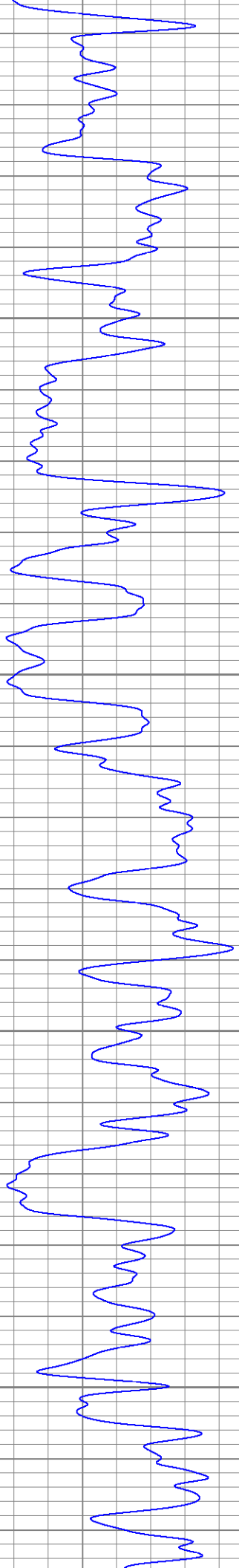
1350

1400

1450

1500



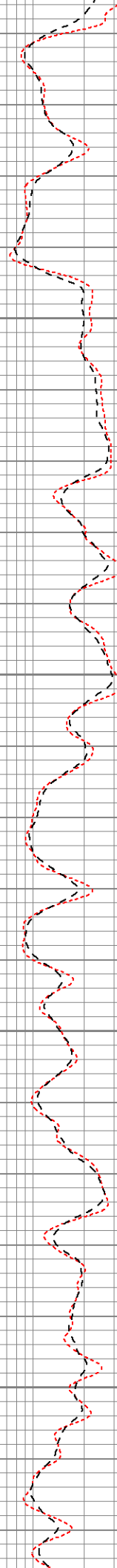


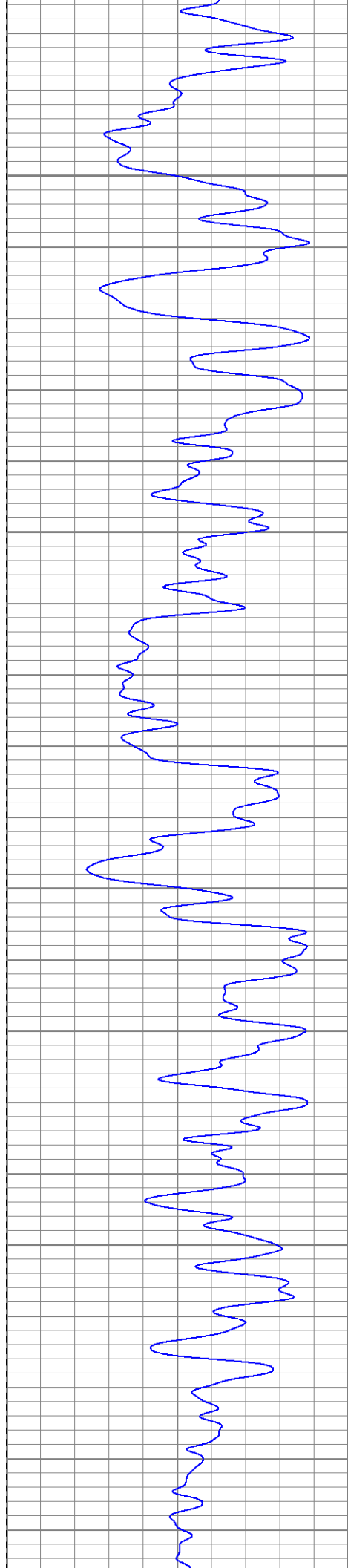
1550

1600

1650

1700



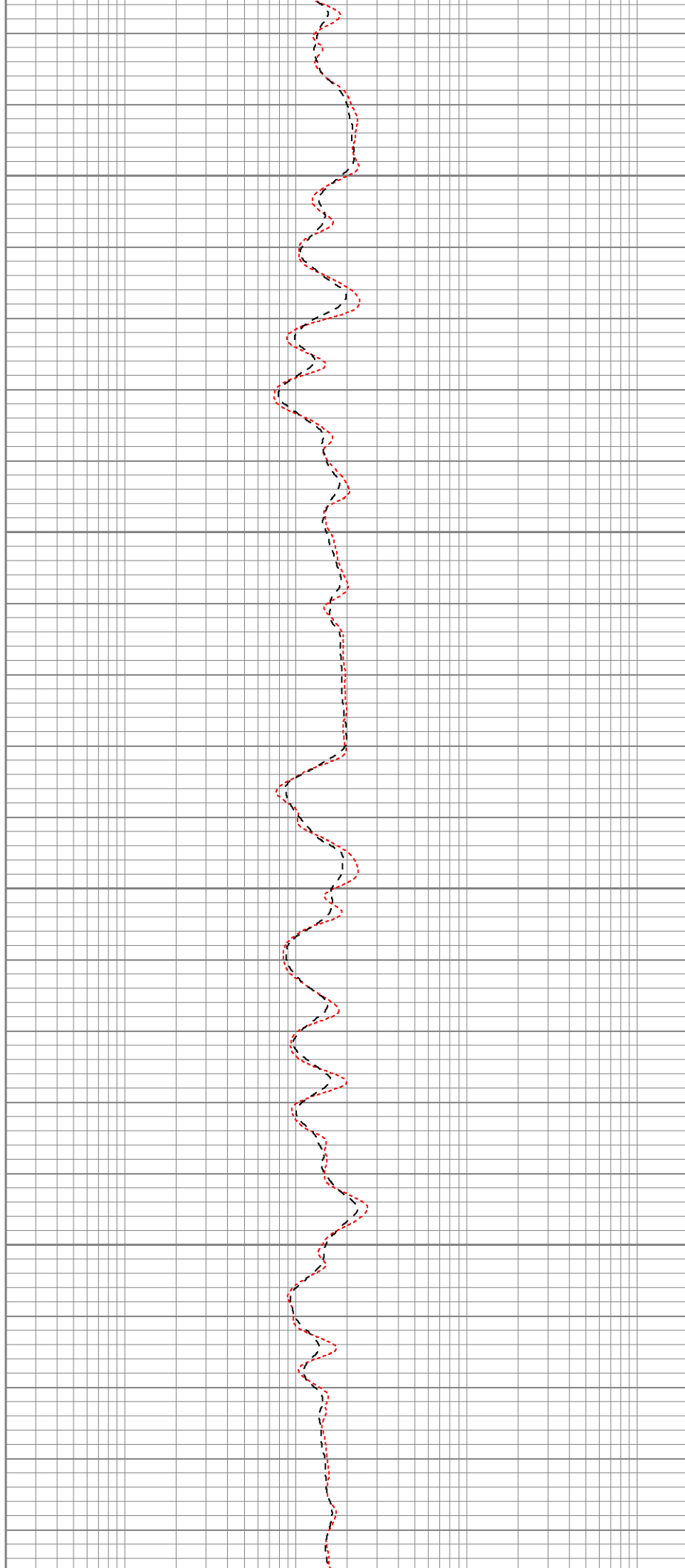


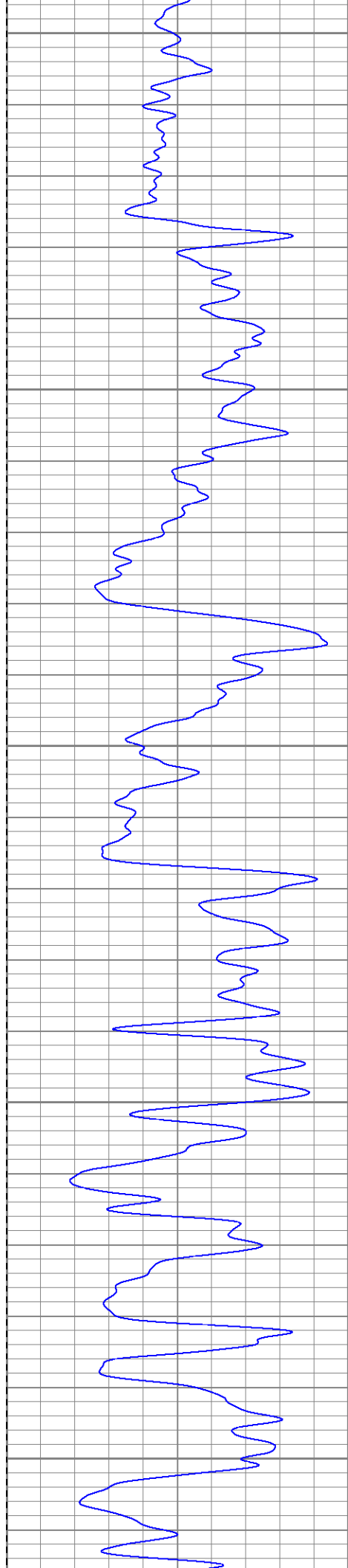
1750

1800

1850

1900





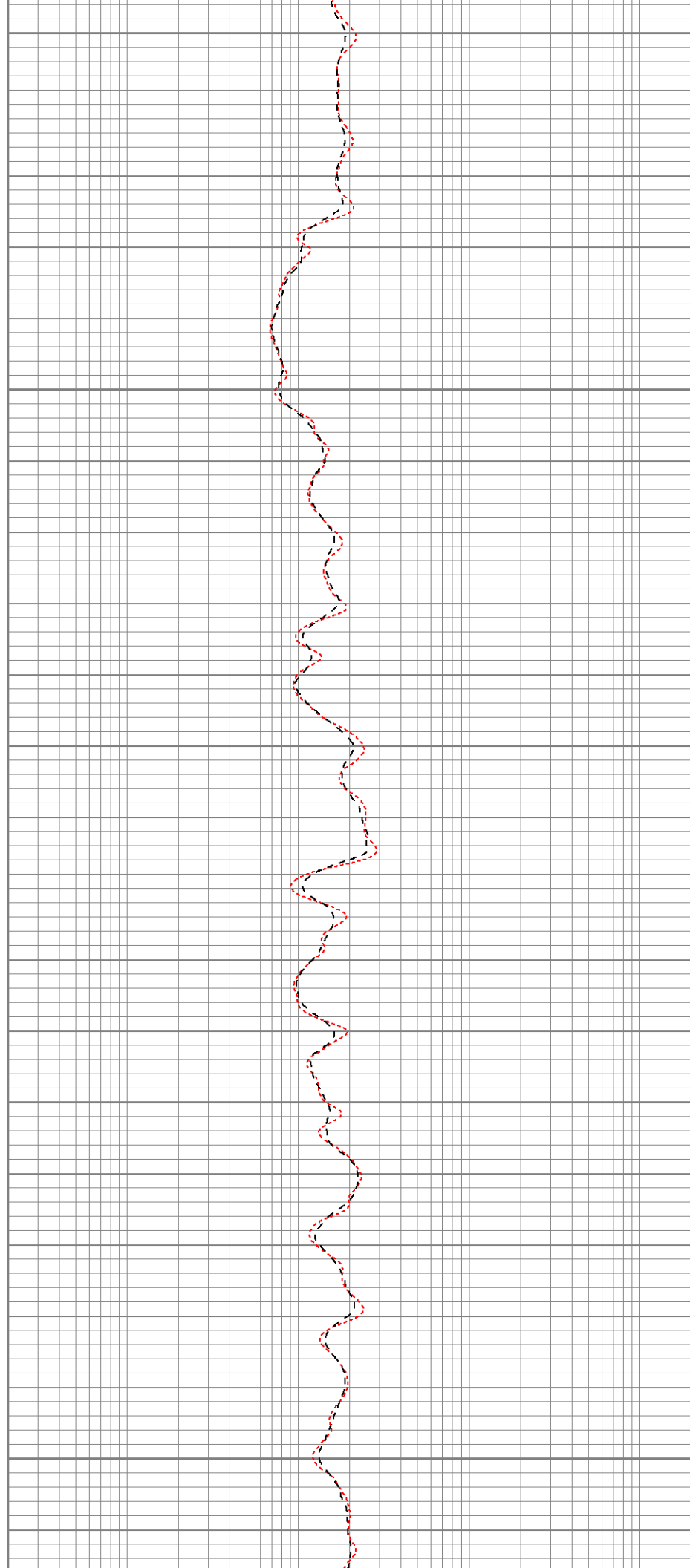
1950

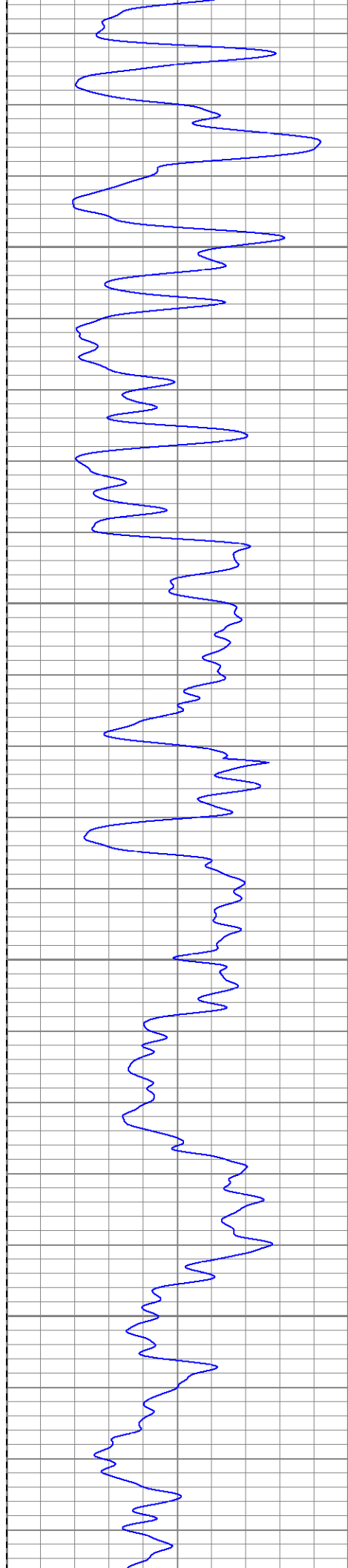
2000

2050

2100

2150



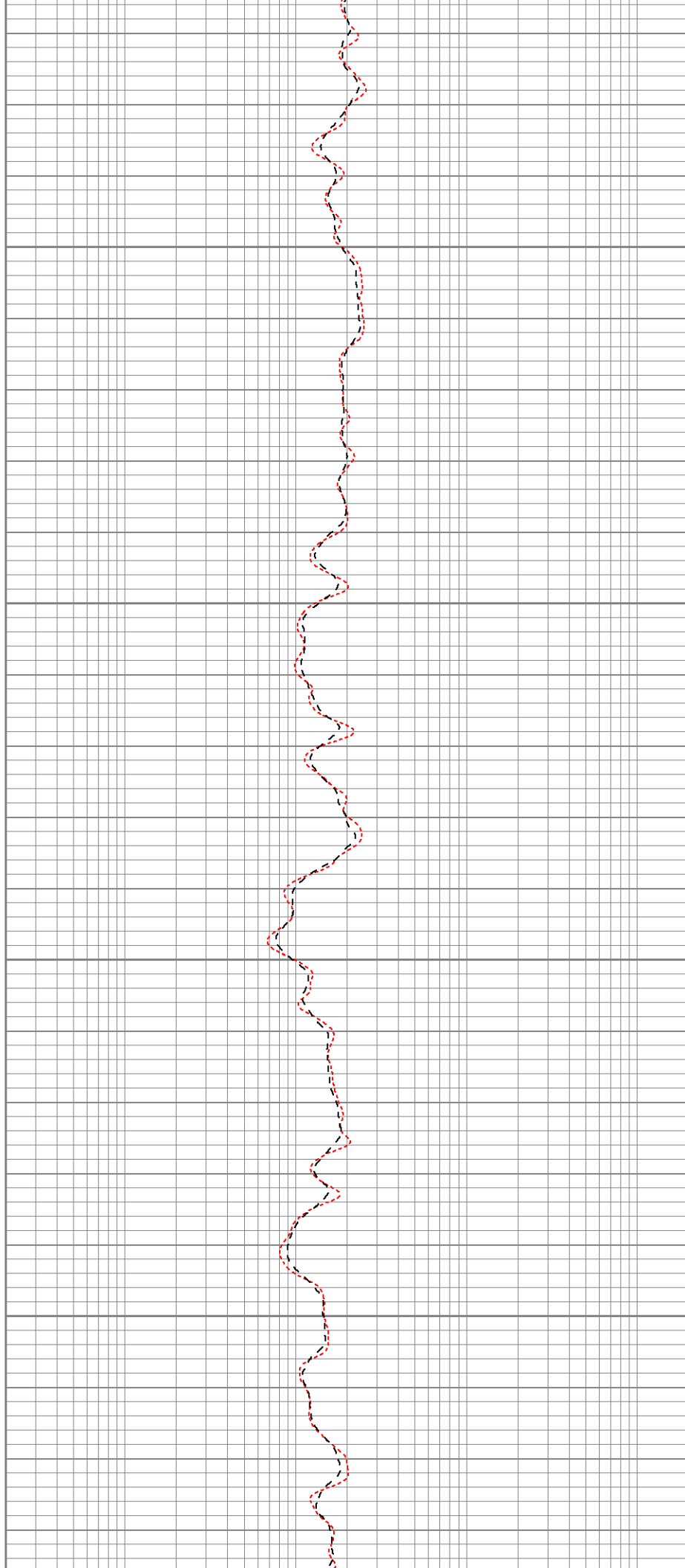


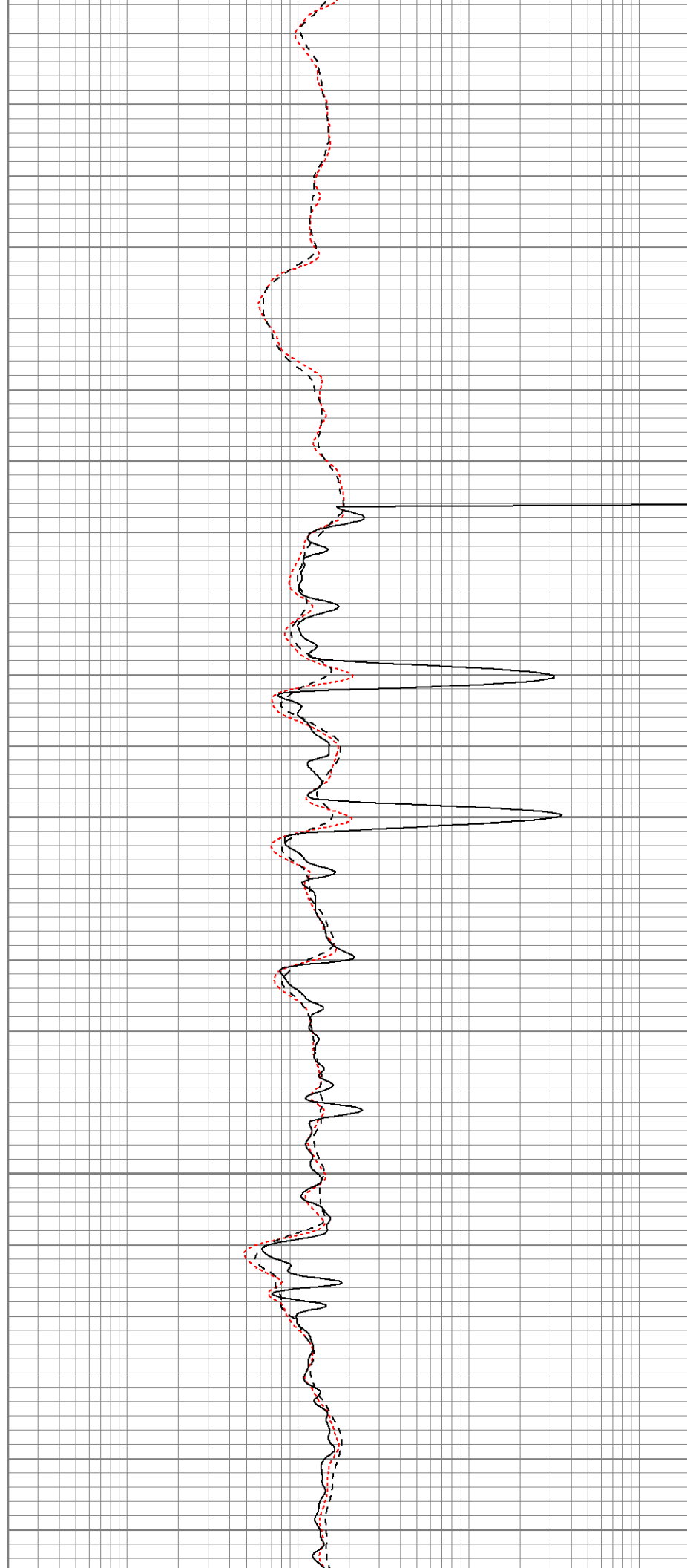
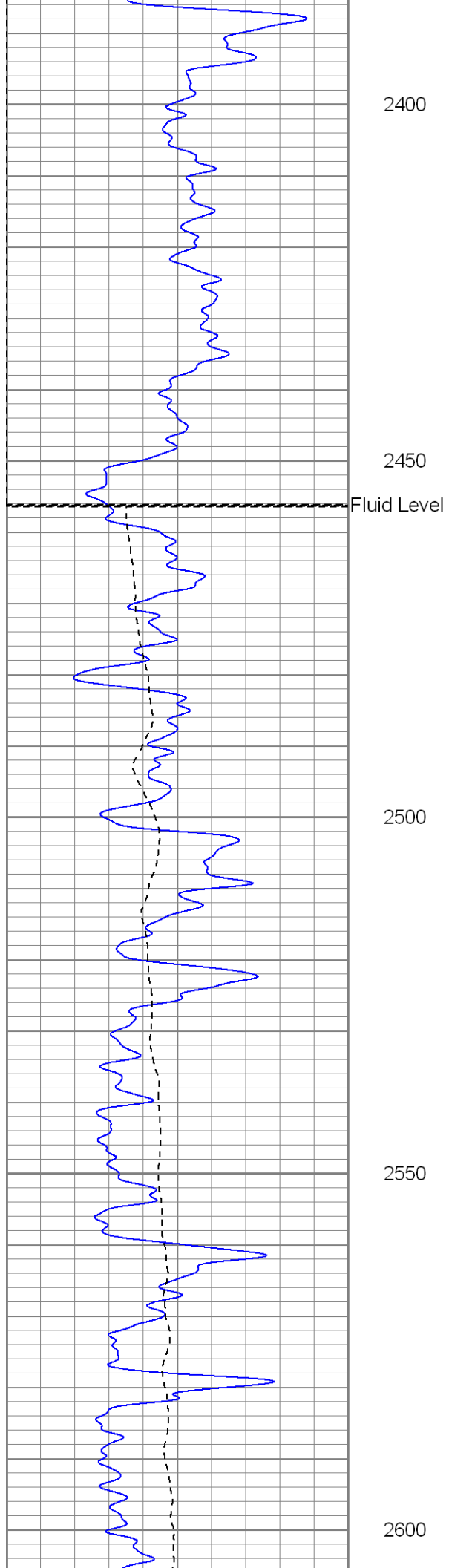
2200

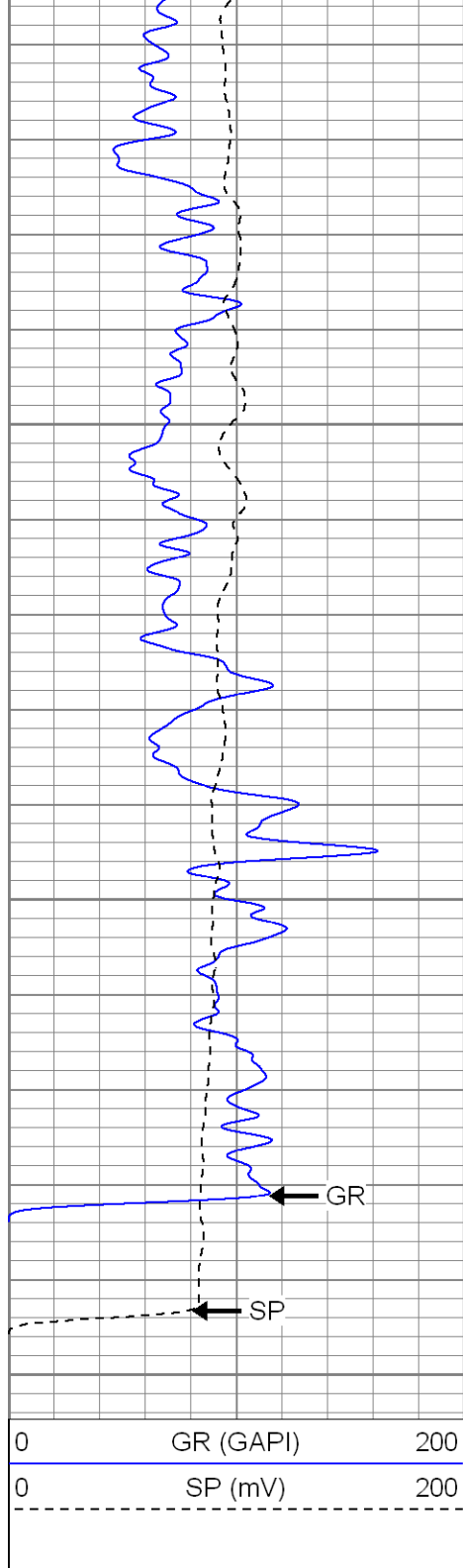
2250

2300

2350



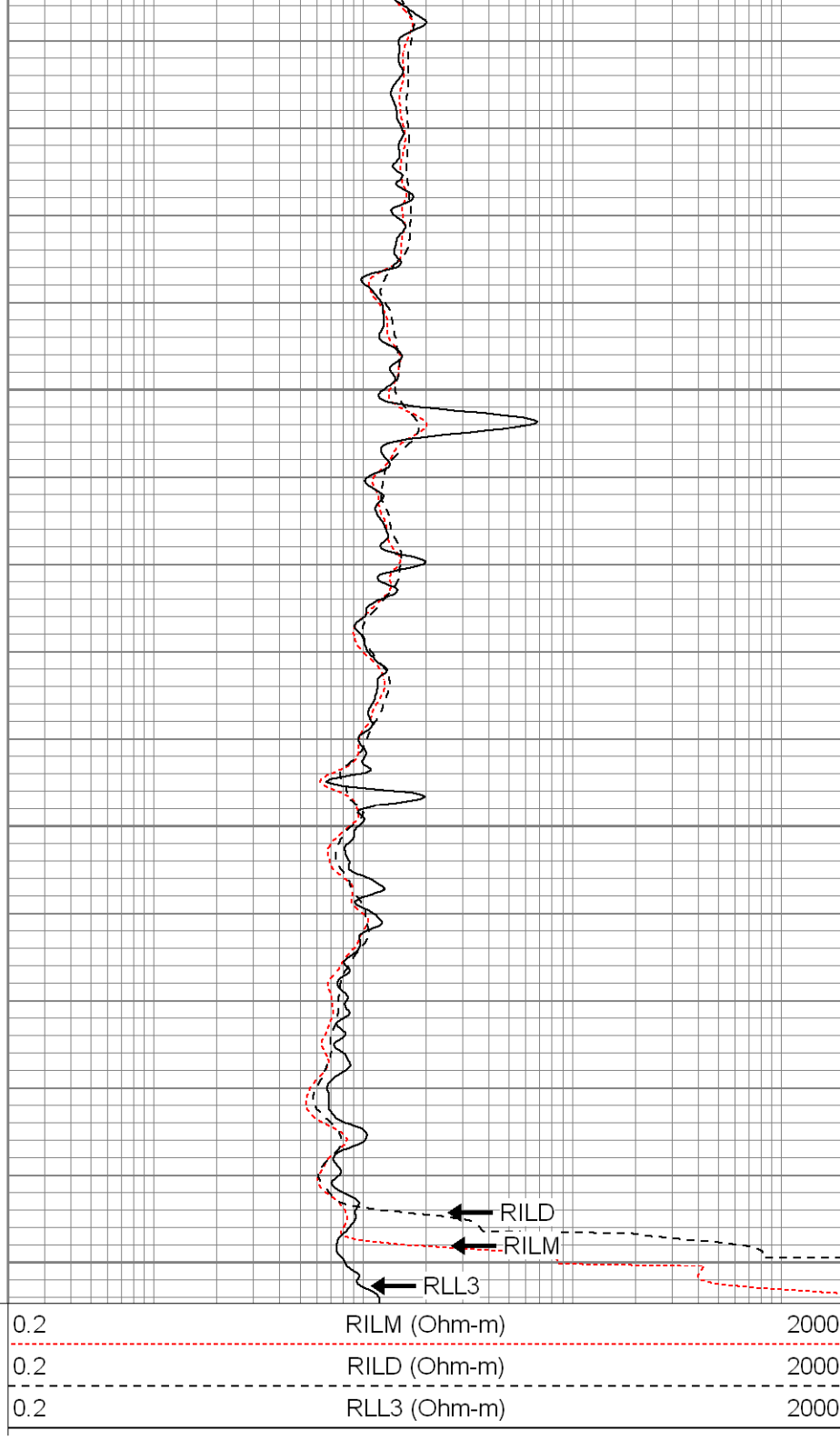




2650

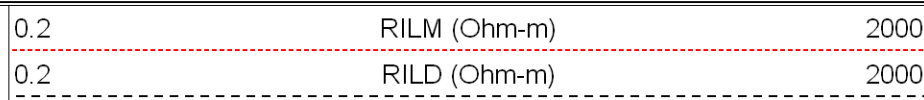
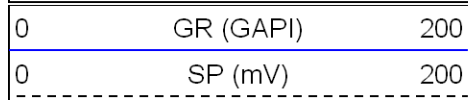
2700

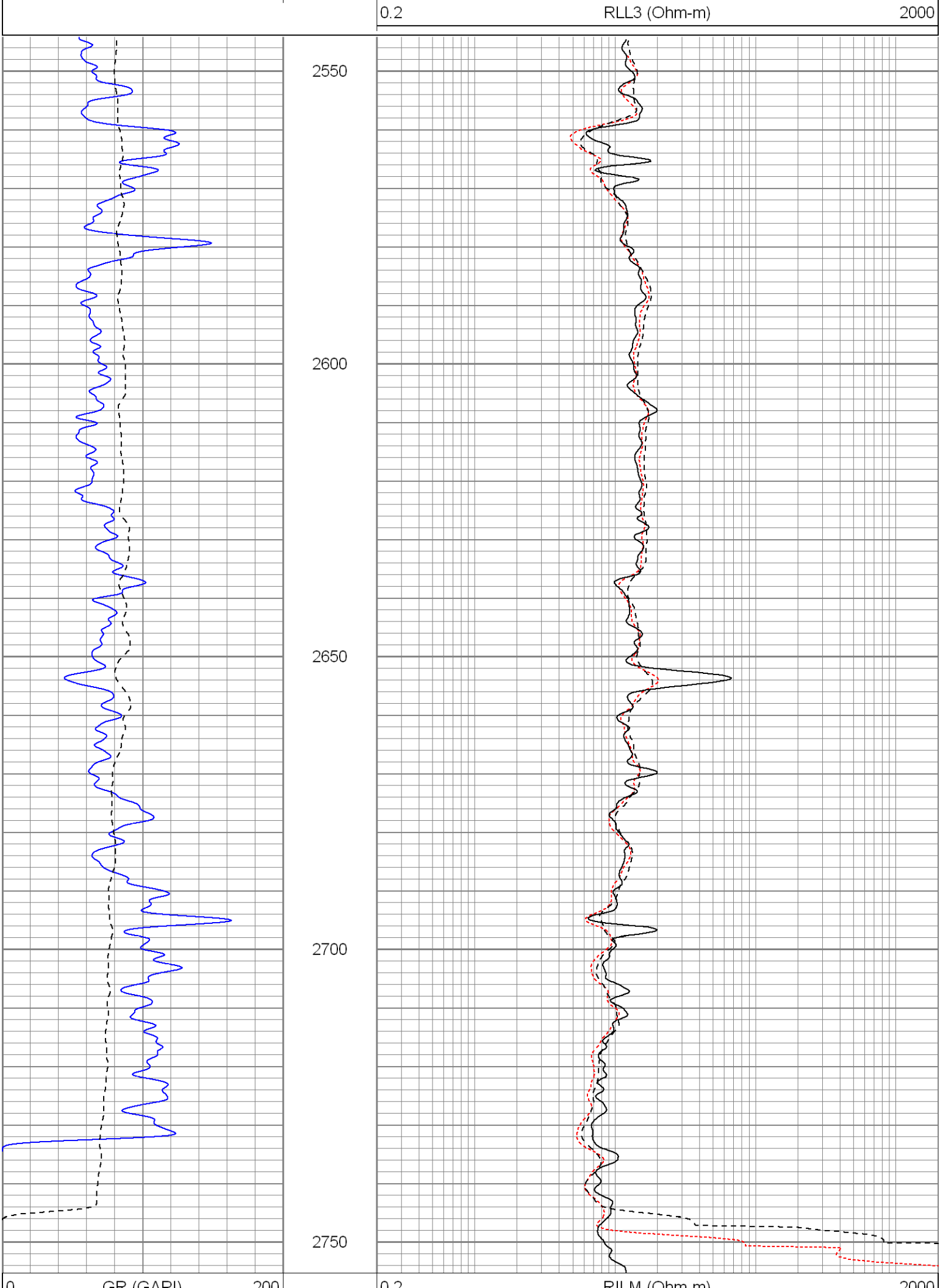
2750



Repeat Section

Database File: hillranch31-16.db
 Dataset Pathname: pass1
 Presentation Format: dil
 Dataset Creation: Mon Feb 01 20:57:39 2010 by Log Open-Cased 071220
 Charted by: Depth in Feet scaled 1:240

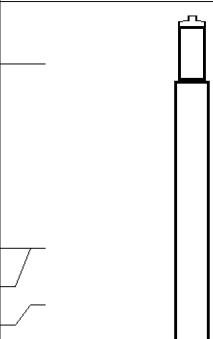





0	GR (GAPI)	200
0	SP (mV)	200

0.2	RILM (Ohm-m)	2000
0.2	RILD (Ohm-m)	2000
0.2	RLL3 (Ohm-m)	2000

Calibration Report									
Database File:	hillranch31-16.db								
Dataset Pathname:	pass1								
Dataset Creation:	Mon Feb 01 20:57:39 2010 by Log Open-Cased 071220								
Dual Induction Calibration Report									
Serial-Model:		080522-Probe							
Surface Cal Performed:		Tue Nov 11 08:37:19 2008							
Downhole Cal Performed:		Tue Nov 11 08:38:43 2008							
After Survey Verification Performed:		Tue Nov 11 08:38:43 2008							
Surface Calibration									
		Readings			References			Results	
Loop:	Air	Loop		Air	Loop		m	b	
Deep	-0.000	0.638	V	0.000	400.000	mmho-m	626.108	0.275	
Medium	0.001	0.741	V	0.000	464.000	mmho-m	626.617	-0.390	
Internal:	Zero	Cal		Zero	Cal		m	b	
Deep	-0.001	0.638	V	0.000	400.000	mmho-m	625.917	0.554	
Medium	0.000	0.741	V	0.000	464.000	mmho-m	626.730	-0.161	
Downhole Calibration									
		Readings			References			Results	
	Zero	Cal		Zero	Cal		m'	b'	
Deep	-0.015	399.656	mmho-m	-0.279	399.843	mmho-m	1.001	-0.264	
Medium	0.142	463.694	mmho-m	-0.229	463.686	mmho-m	1.001	-0.371	
LL3		7.363	V		750.000	Ohm-m			
		-0.000	V		12.000	Ohm-m			
		-7.262	V		3745.000	mmho-m			
Gamma Ray Calibration Report									
Serial Number:		2001							
Tool Model:		OH							
Performed:		Mon Jan 25 10:14:15 2010							
Calibrator Value:		1.0		GAPI					
Background Reading:		0.0		cps					
Calibrator Reading:		1.0		cps					
Sensitivity:		0.2500		GAPI/cps					

Sensor	Offset (ft)	Schematic	Description	Len (ft)	OD (in)	Wt (lb)
GR	22.64		None	0.75	1.50	5.00
			GR-OH (2001)	3.56	3.25	40.00
CILD	10.60		DIL-Probe (080522) Probe Dual Induction	21.47	4.00	345.00
SP	10.60					
CILM	6.89					

