

HALLIBURTON

CEMENT BOND LOG

SG INTERESTS FEDERAL 11-89-17 #1 BULL MOUNTAIN GUNNISON CO				COMPANY SG INTERESTS WELL FEDERAL 11-89-17 #1 FIELD BULL MOUNTAIN COUNTY GUNNISON STATE CO			
COMPANY WELL FIELD COUNTY STATE		API No. 05051060860000 Location SURFACE HOLE: 2401' FNL & 2116' FEL		Other Services: CAST-F			
Permanent Datum	GL	Elev. 7425.0 ft	Elev. 7444.0 ft				
Log measured from	KB	19.0 ft. above perm. Datum	D.F. 7443.0 ft				
Drilling measured from	KB		G.L. 7425.0 ft				
Date @ Time Logged	21-Oct-08	Type of fluid in hole	FRESH WATER				
Run No.	THREE	Density of Fluid	8.4000				
Depth - Driller	8809.00 ft	Fluid Level	SURFACE				
Depth - Logger	8775.0 ft	Cement Top Est. Location	RECORDED				
Bottom - Logged Interval	8747.00 ft	Equipment/Location	11014853 / GJ, CO				
Top - Logged Interval	4460.00 ft	Recorded by	K. WOOD				
Max. Rec. Temperature	242.0 degF	Witnessed by	E. WEST				
CEMENTING DATA		Surface	Protection	Production	Liner		
		String	String	String			
Date/Time Cemented							
Primary/Squeeze							
Expected Compressive Strength	psi@ hrs	psi@ hrs	psi@ hrs	psi@ hrs			
Cement Volume							
Cement Type / Weight	/	/	FOAM / 10.5	/	/		
Formulation							
MUD type / MUD wgt.	/	/	/	/	/		
BOREHOLE RECORD			CASING & TUBING RECORD				
No.	Bit	From	To	Size	Wgt.		
1	20.000 in	0.00 ft	72.00 ft	16.000 in	94.00 lbpf		
2	16.000 in	72.00 ft	405.00 ft	13.375 in	54.50 lbpf		
3	12.250 in	405.00 ft	4900.00 ft	9.625 in	36.00 lbpf		
4	8.500 in	4900.00 ft	8909.00 ft	5.500 in	17.00 lbpf		
5							

Fold here

Service Ticket No.: 8981617		API Serial No.: 05051060860000		PGM Version: WL INSITE R2.4 (Build 20)	
The Well Name, Location, Cementing Data & Borehole Description Furnished By Client					
CEMENTING DATA					
Cement Pumped	bbl/min @	psi	/Joint From	To	
Preceding Fluid	Volume&	bbl	Centralizers	/Joint From	To
Returns (Full,Partial,None)?				/Joint From	To
Pipe Rotated / Reciprocated				/Joint From	To
During Pumping (Yes,No)?				/Joint From	To
After Plug Down (Yes,No)?			Scratchers	/Joint From	To
Plug Pumped (Yes,No)?				/Joint From	To
Plug Landing Pressure	Psi			/Joint From	To
Pressure Held	Psi	Hrs After Pumping			
EQUIPMENT DATA					
GAMMA		ACOUSTIC		CAST	
Run No.	THREE	Run No.	THREE	Serial No.	E065
Serial No.	034	Serial No.	350	Scanner No.	11219327
Model No.	D4TGX	Model No.	M305B	Head Size	3.625"
Diameter	3.625"	Diameter	3.625"	Transducer Type	BROWN
Detector Model No.	D4TG	No. of Cent.	FOUR	Slot	
Type	SCINT.	Spacing	2'		
Length	8"				
Distance to Source	N/A				
LOGGING DATA					
GENERAL		GAMMA		NEUTRON	
Run	Depth	Well Head	Speed	Scale	Scale
No.	From to	Pressure	m/ Min	L R	L R
THREE	8747.00' 4460.00'	0	REC.	0 200	

DIRECTIONAL INFORMATION										
Maximum Deviation				@	KOP			@		
Remarks: RWCH-D4TGX-M305B-BCS-CAST-F WERE RUN IN COMBINATION.										
LATITUDE: 39.1011° N // 107.3589° W.										
YOUR CREW TODAY: R. DAVIS AND R. COSSEY.										
THANK YOU FOR CHOOSING HALLIBURTON ENERGY SERVICES - GRAND JUNCTION, CO - (970) 523-3600.										
<p>HALLIBURTON DOES NOT GUARANTEE THE ACCURACY OF ANY INTERPRETATION OF THE LOG DATA, CONVERSION OF LOG DATA TO PHYSICAL ROCK PARAMETERS OR RECOMMENDATIONS WHICH MAY BE GIVEN BY HALLIBURTON PERSONNEL OR WHICH APPEAR ON THE LOG OR IN ANY OTHER FORM. ANY USER OF SUCH DATA, INTERPRETATIONS, CONVERSIONS, OR RECOMMENDATIONS AGREES THAT HALLIBURTON IS NOT RESPONSIBLE EXCEPT WHERE DUE TO GROSS NEGLIGENCE OR WILLFUL MISCONDUCT, FOR ANY LOSS, DAMAGES, OR EXPENSES RESULTING FROM THE USE THEREOF.</p> <p>HALLIBURTON</p>										



PARAMETERS REPORT

Depth (ft)	Tool Name	Mnemonic	Description	Value	Units
TOP					
	SHARED	BS	Bit Size	8.500	in
	SHARED	UBS	Use Bit Size instead of Caliper for all applications.	No	
	SHARED	MDWT	Borehole Fluid Weight	8.400	ppg
	SHARED	RMUD	Mud Resistivity	2.000	ohmm
	SHARED	TRM	Temperature of Mud	75.0	degF
	SHARED	OBM	Oil Based Mud System?	No	
	SHARED	CSD	Logging Interval is Cased?	Yes	
	SHARED	CSOD	Inner Casing OD size	5.500	in
	SHARED	CSWT	Casing Weight	17.00	lbpf
	SHARED	ISOC	Is Outer Casing Present?	No	
	SHARED	CSCM	Casing Cemented	Yes	
	SHARED	CMWT	Cement Weight	10.500	ppg
	SHARED	ST	Surface Temperature	75.0	degF
	SHARED	TD	Total Well Depth	8775.00	ft
	SHARED	BHT	Bottom Hole Temperature	242.0	degF
	Rwa / CrossPlot	XPOK	Process Crossplot?	Yes	
	Rwa / CrossPlot	FCHO	Select Source of F	Automatic	
	Rwa / CrossPlot	AFAC	Archie A factor	0.6200	
	Rwa / CrossPlot	MFAC	Archie M factor	2.1500	
	Rwa / CrossPlot	RMFR	Rmf Reference	0.10	ohmm
	Rwa / CrossPlot	TMFR	Rmf Ref Temp	75.00	degF
	Rwa / CrossPlot	RWA	Resistivity of Formation Water	0.05	ohmm

CCLD4	CLOK	Process CCL?	Yes	
CCLD4	CCLS	CCL Processing Selection	Raw	
D4TGX	GROK	Process Gamma Ray?	Yes	
D4TGX	GRSO	Gamma Tool Standoff	0.000	in
D4TGX	GEOK	Process Gamma Ray EVR?	No	
CBL-BCS	TTLV	Travel Time threshold.	5.0	mV
CBL-BCS	TTOF	CBL Travel Time Offset from Calibration.	0	us
CBL-BCS	ISFM	Is foam cement type?	Yes	
CBL-BCS	CSTR	Compressive Strength	1000.00	psia
CBL-BCS	BIOK	Calculate Bond Index?	Yes	
CBL-BCS	ISMD	Is borehole fluid Mud?	No	
CBL-BCS	SHGT	Show Gate on VDL?	No	
CBL-BCS	OGOF	Override CBL Gain and Offset?	No	
CASTSCAN	CASO	Compute CAST Results	Yes	
CASTSCAN		Cast Advanced features flag	No	
CASTSCAN		Cast Cased Hole applications	Cement Insp	
CASTSCAN	INHT	Cast Inhibit Time In Samples of 0.2 us Increments	150	
CASTSCAN		Cast shots number of shots per scan (revolution)	SHOTS60	
CASTSCAN		Cast sample interval in us	0.4uS	
CASTSCAN	WFM	Cast Waveform Length in microsecond	WAVE_LEN_32uS	
CASTSCAN		Scans per ft for Imaging application	36	
CASTSCAN		Scans per ft for Pipe\Corrosion Inspection application	4	
CASTSCAN		Scans per ft for Cement Inspection application	4	
CASTSCAN		CAST cased hole Data Alignment Method	RELBEARING	
CASTSCAN		Cast Effective Head radius, Transducer location	1.250	in
CASTSCAN		Cast Transducer Head Diameter	3.625	in
CASTSCAN		Cast Xducer resonance frequency	BROWN350	
CASTSCAN	USTT	Use Fixed Value For Fluid TT	No	
CASTSCAN	MCUR	Max Motor Current	1.0000	amps

BOTTOM

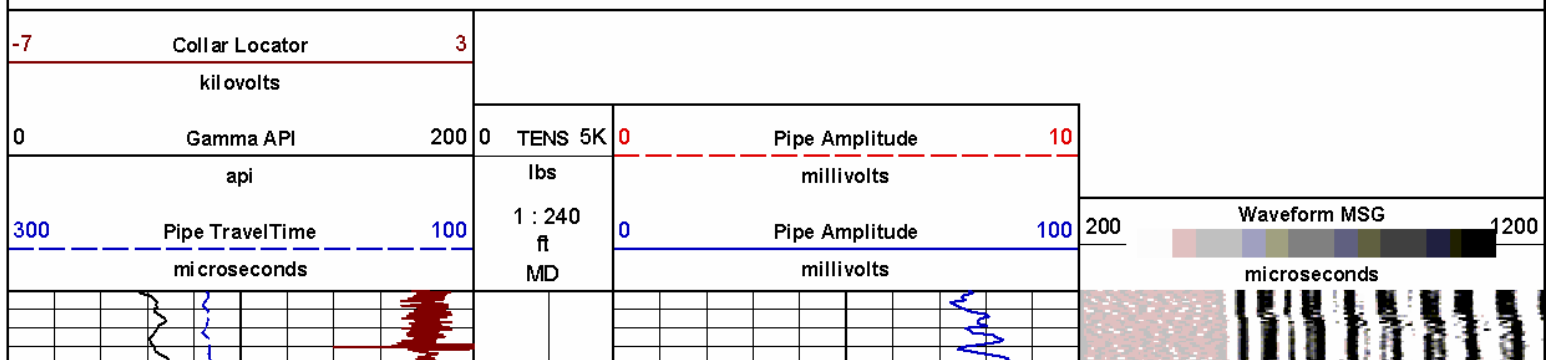
Data: SG_118917#1R3\0002 FAST CAST\IDLE

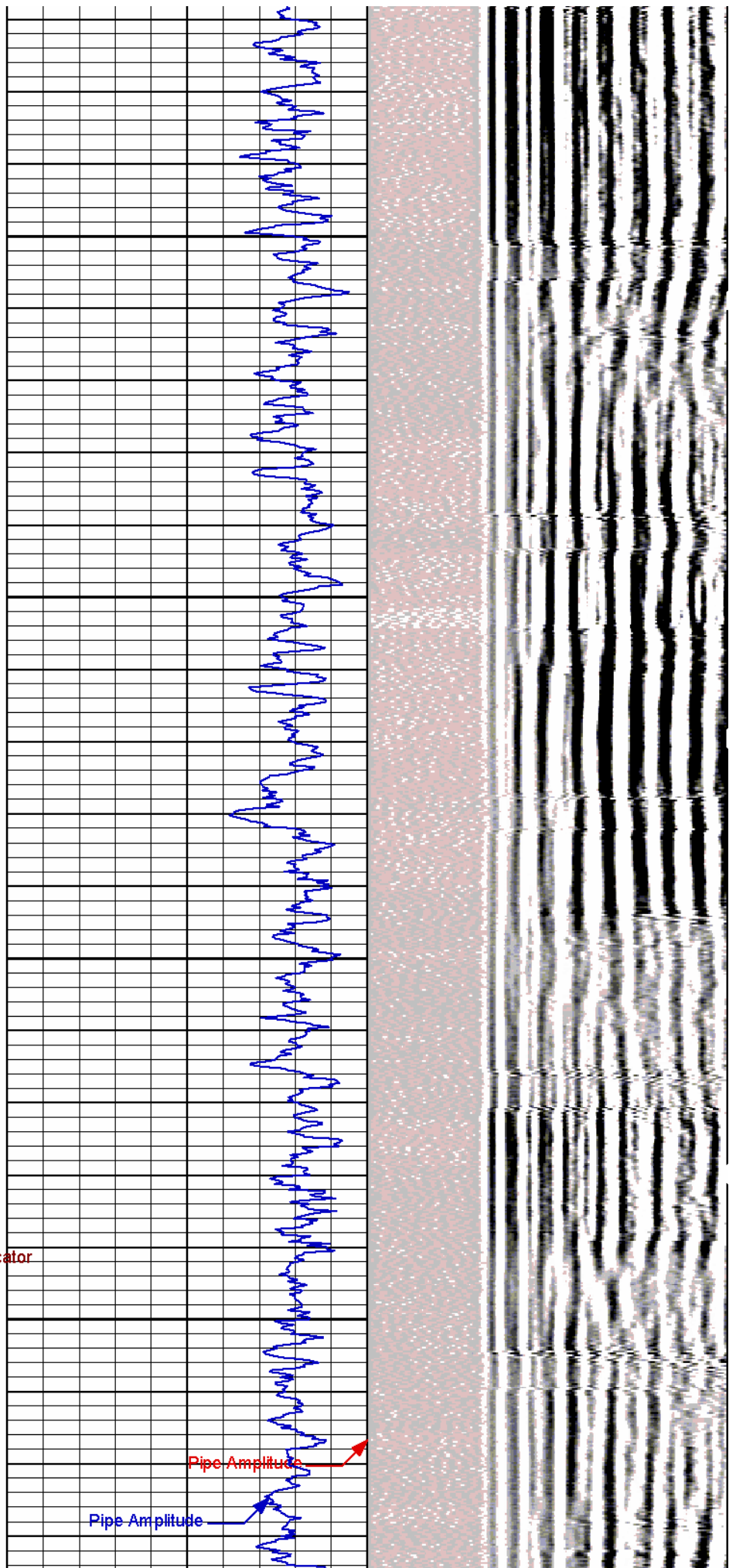
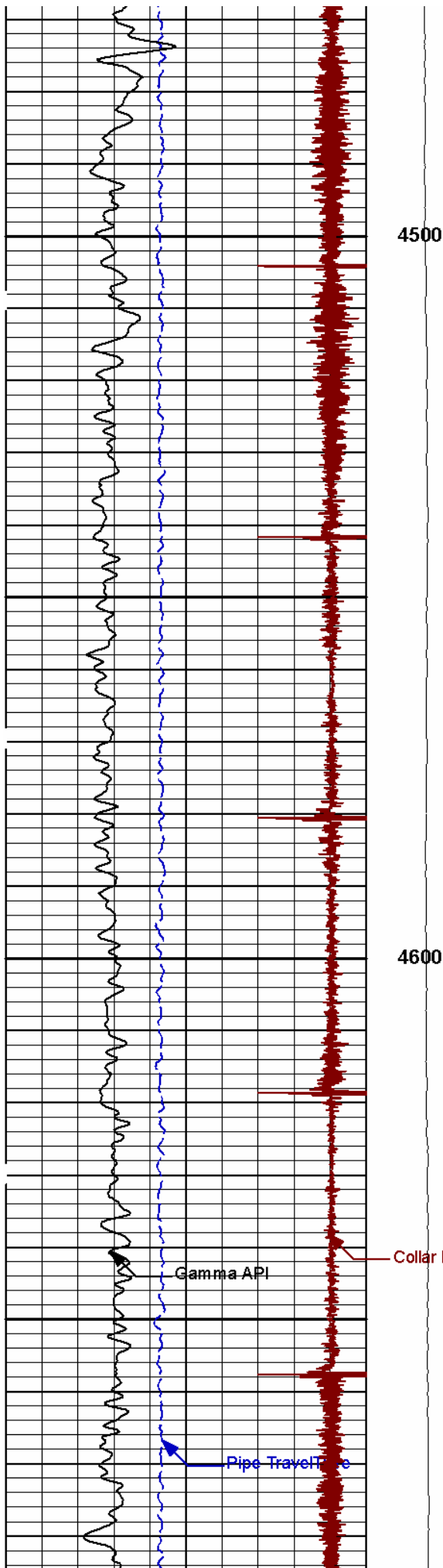
Date: 22-Oct-09 03:59:03

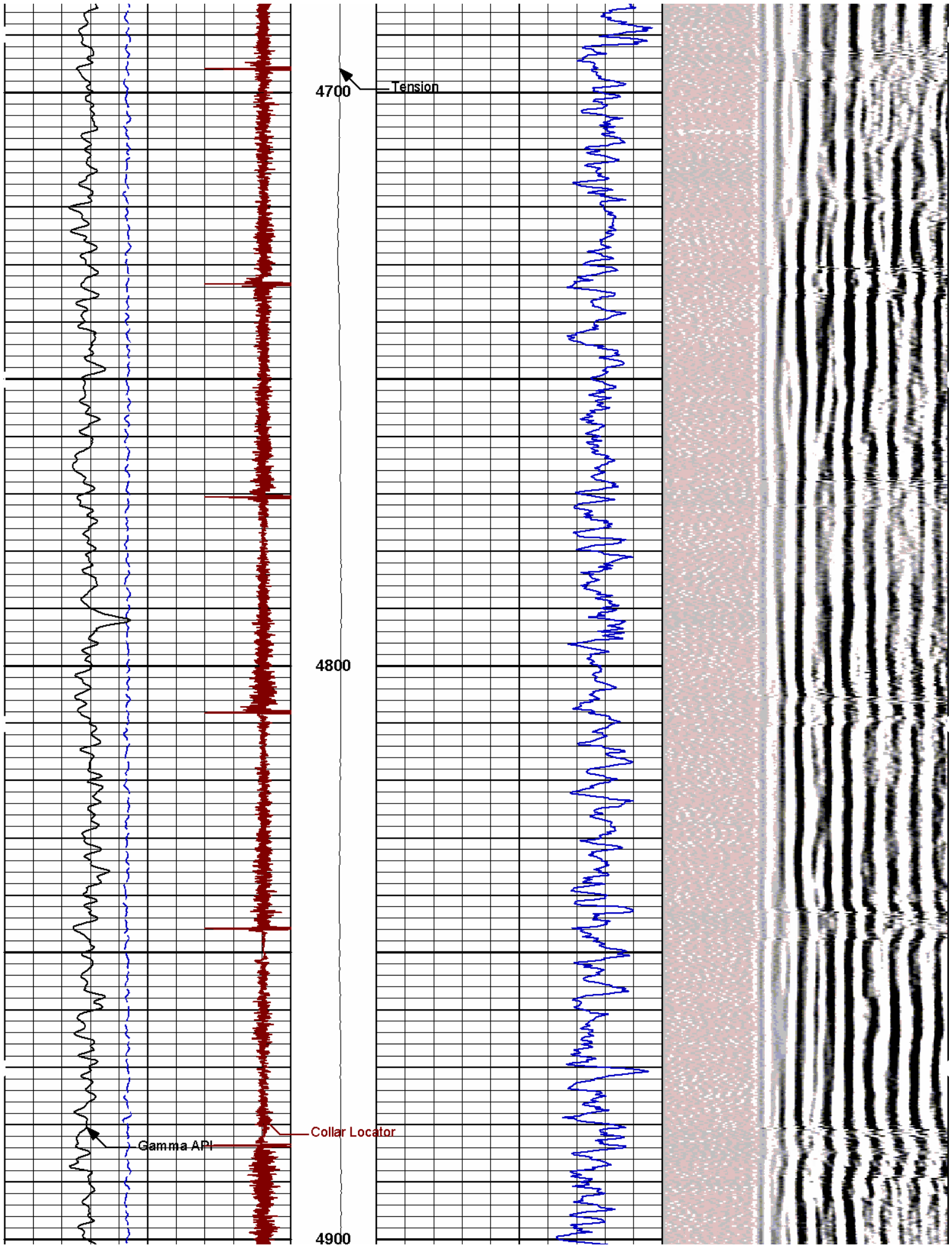
HALLIBURTON

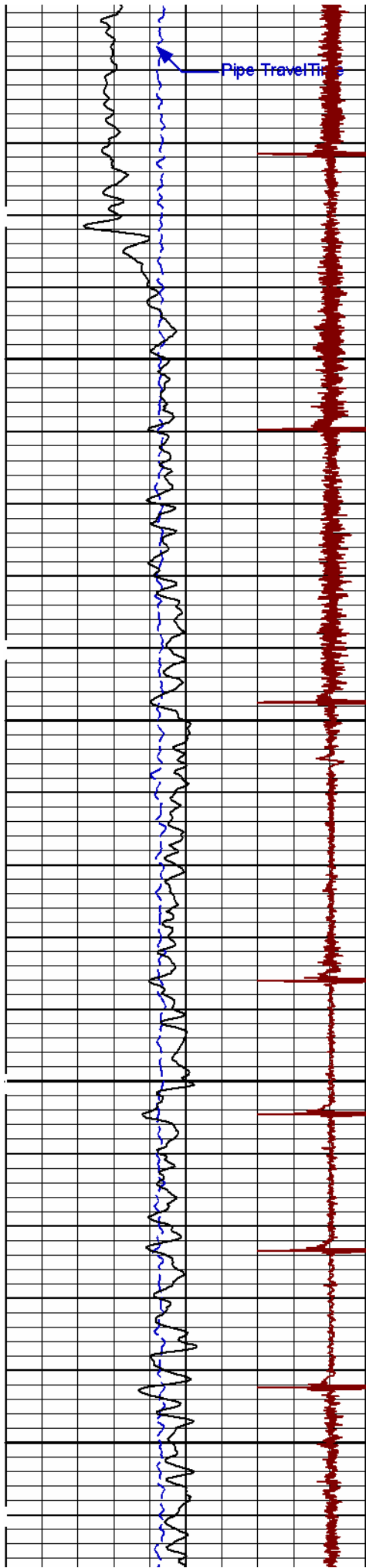
Plot Time: 22-Oct-09 04:33:56
Plot Range: 4460 ft to 8780 ft
Data: SG_118917#1R3\Well Based\MAIN PASS1
Plot File: \CBL\FWS CBL 1_240

MAIN PASS 5" = 100'



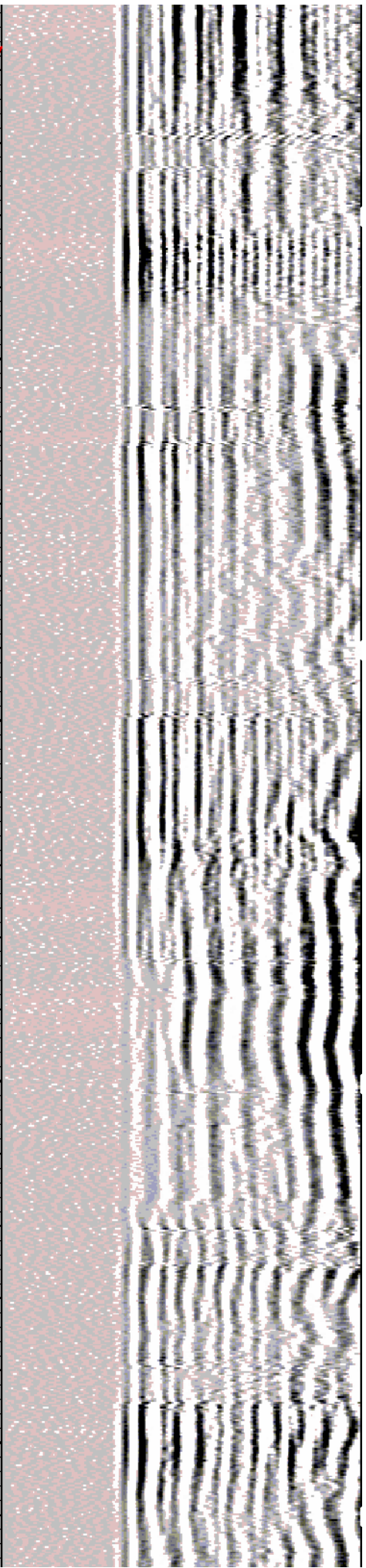
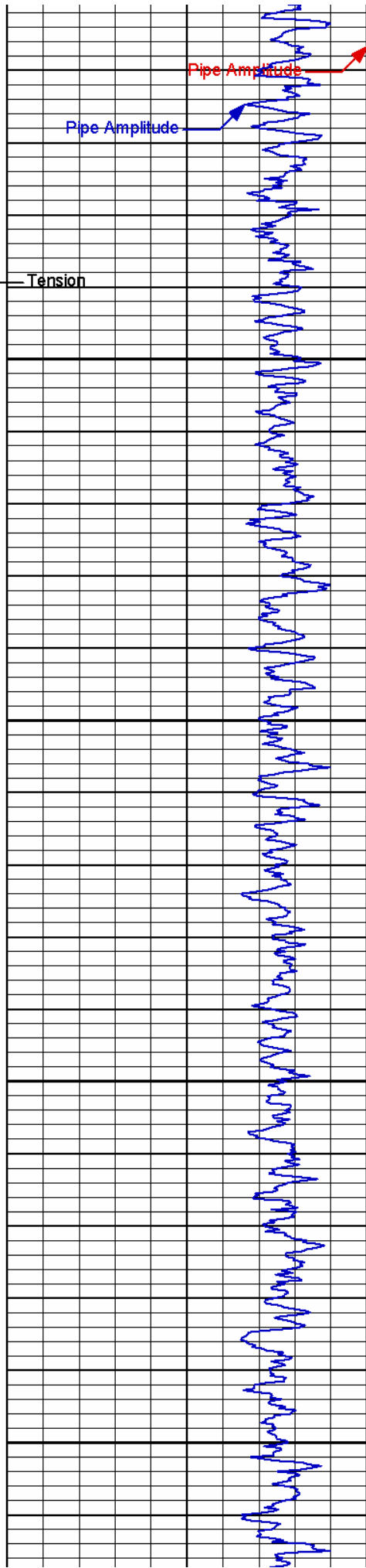


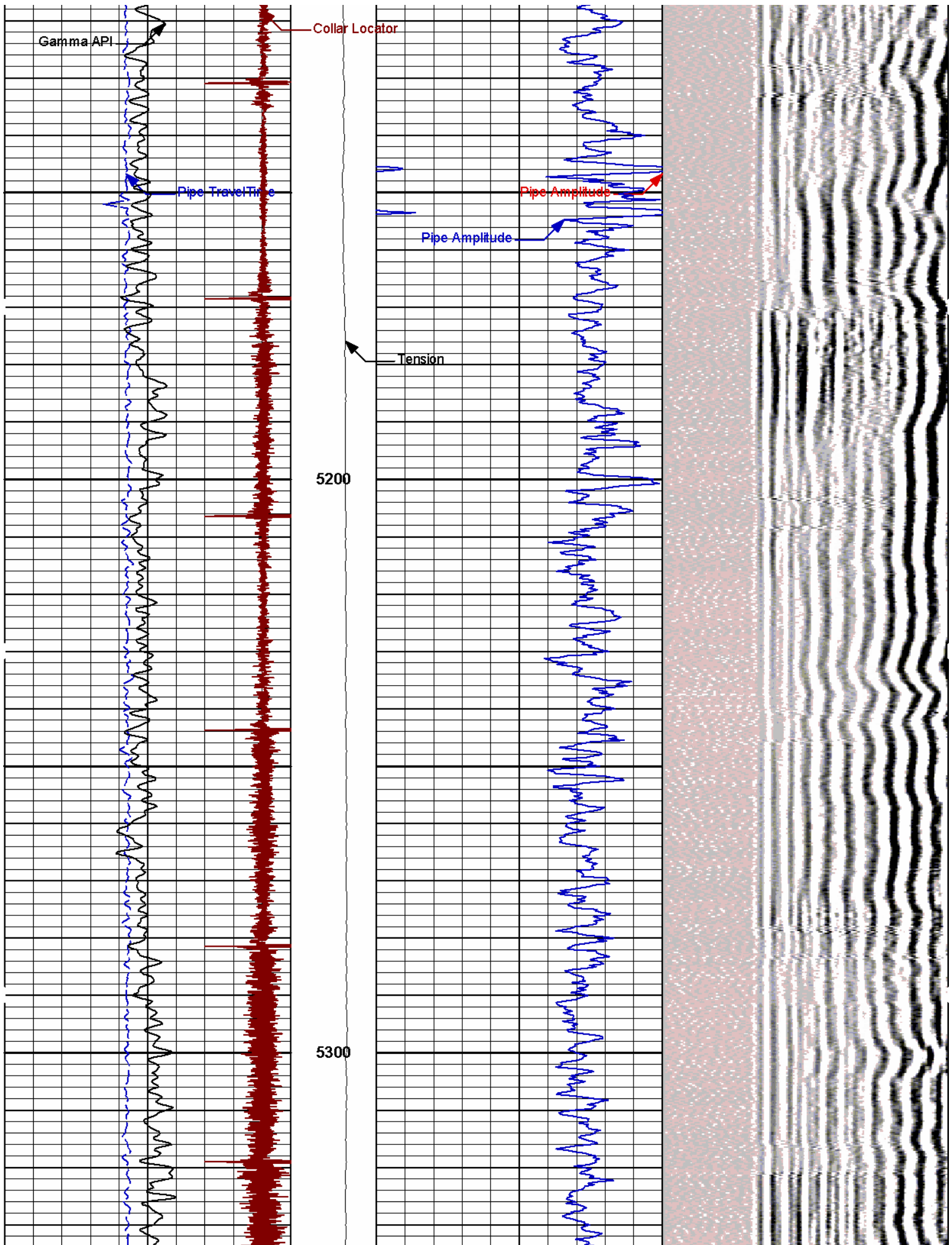


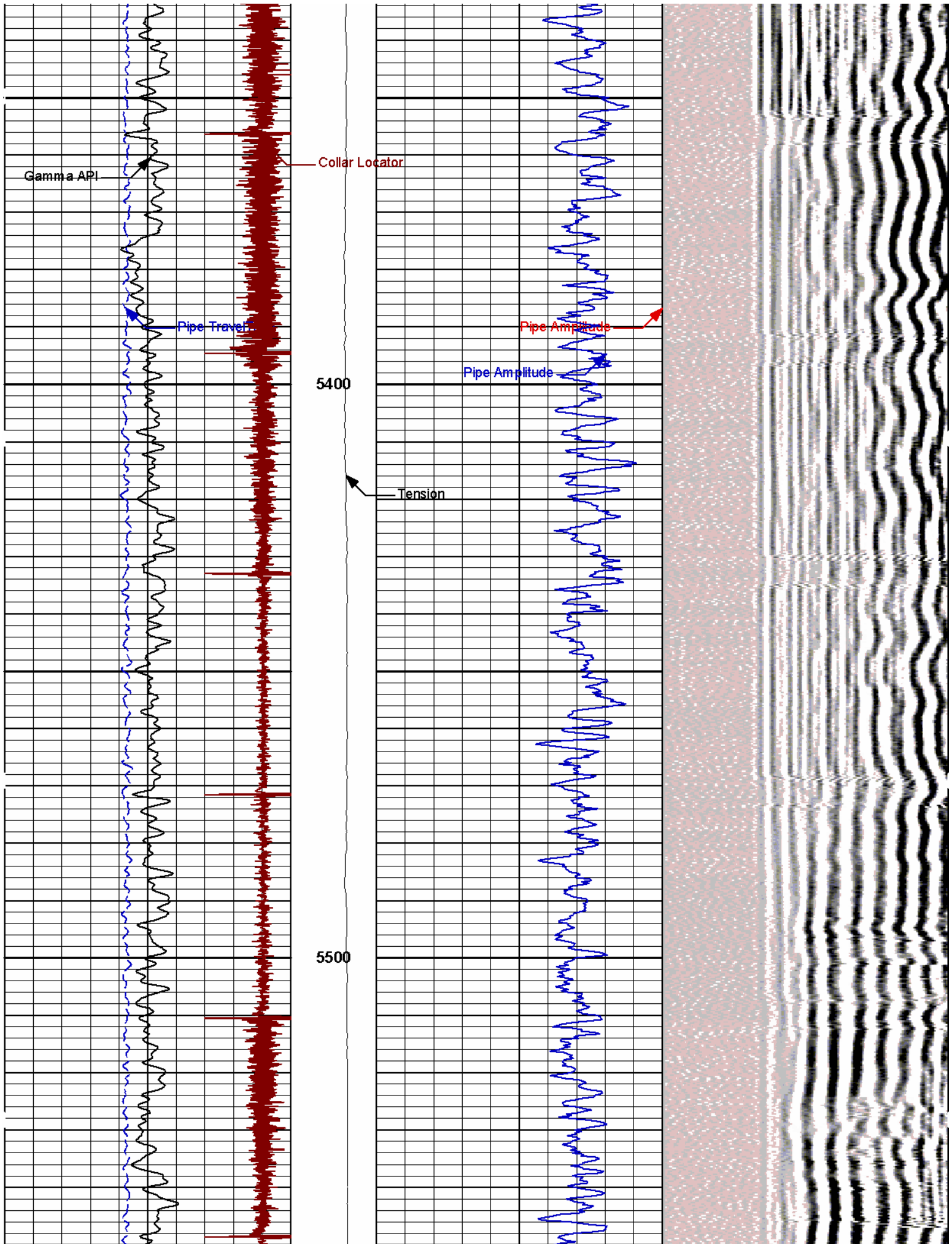


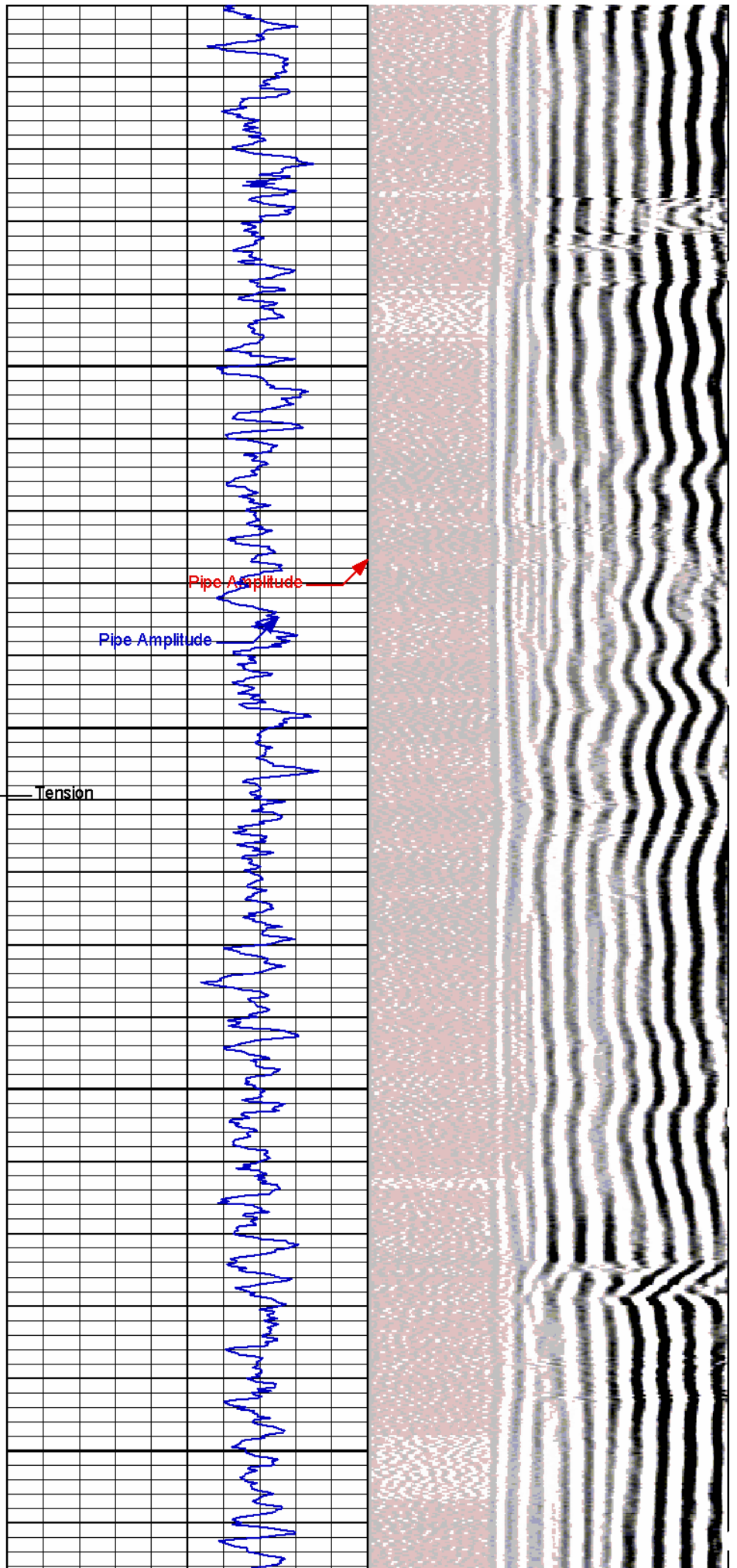
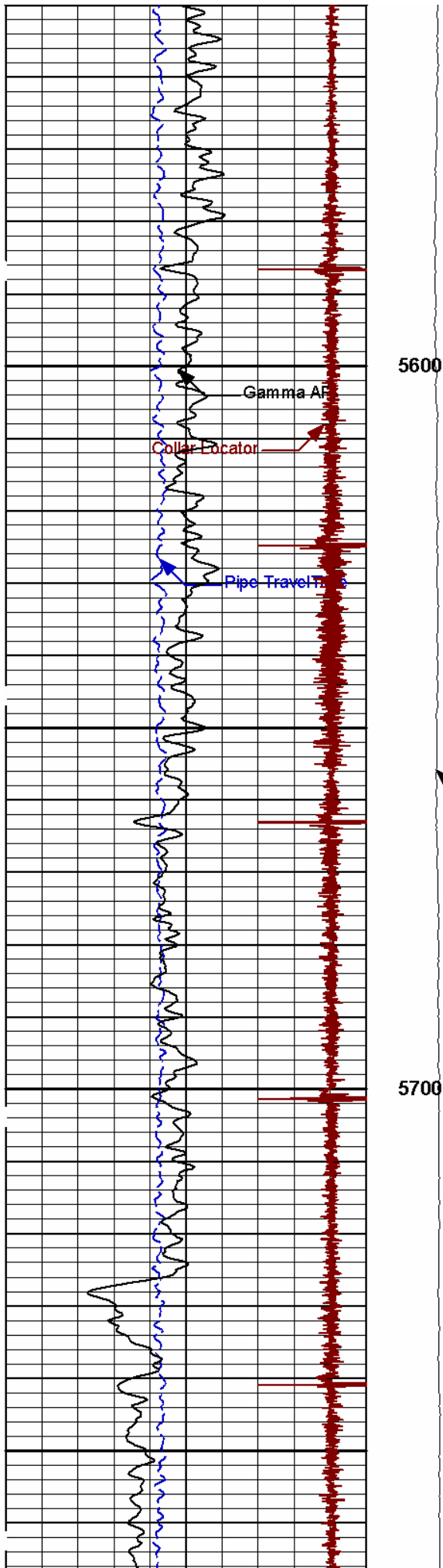
5000

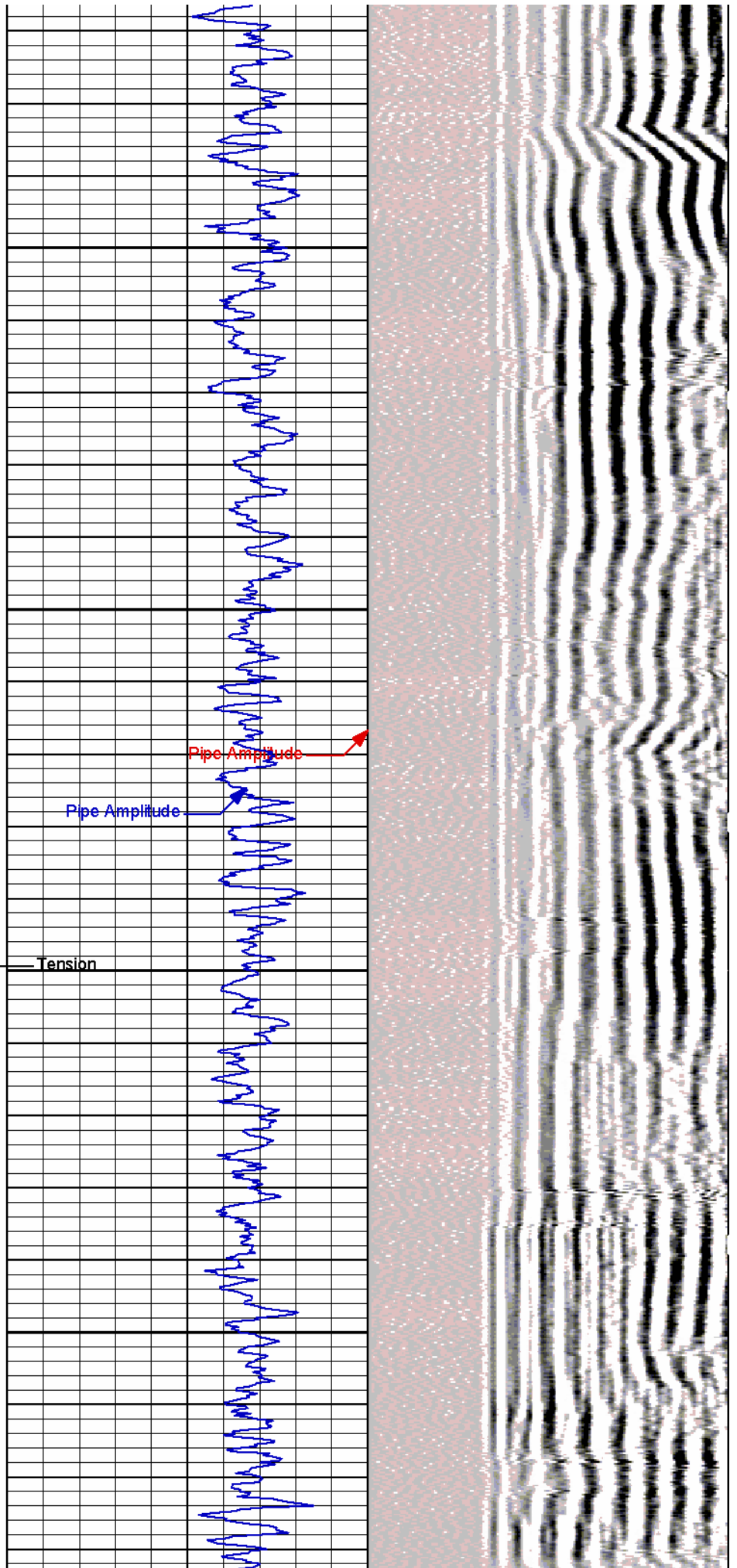
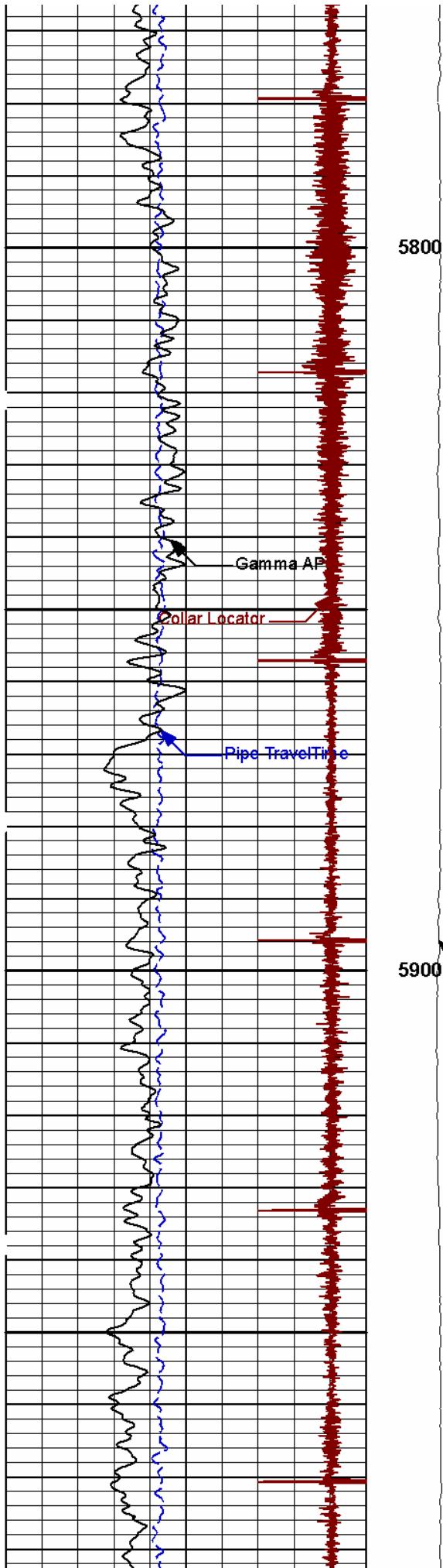
5100

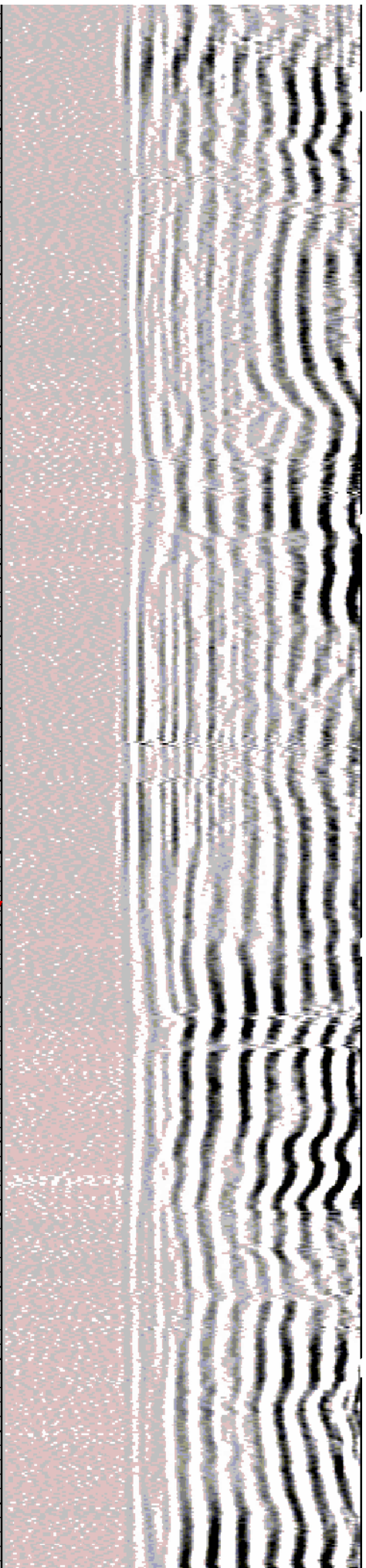
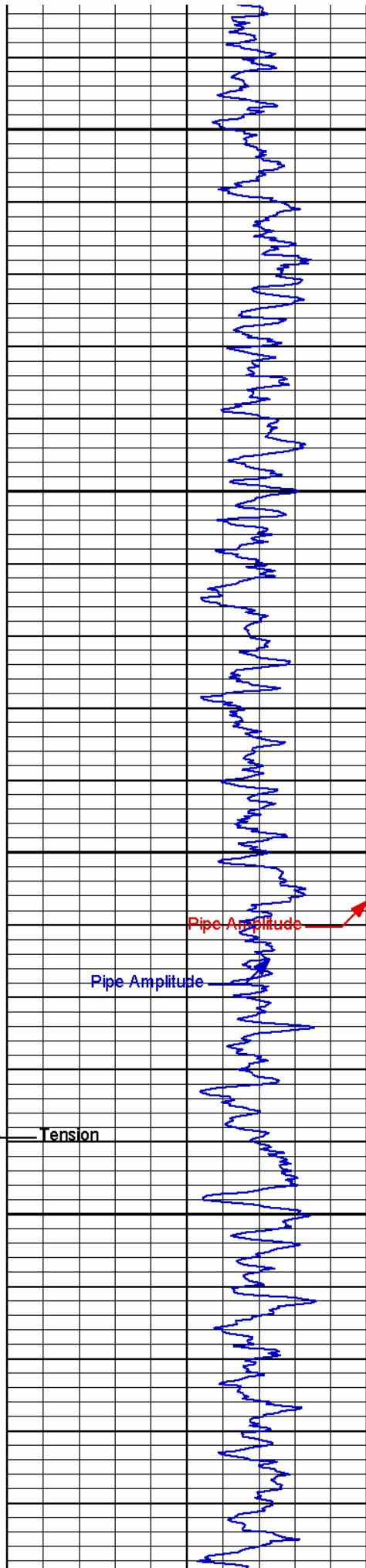
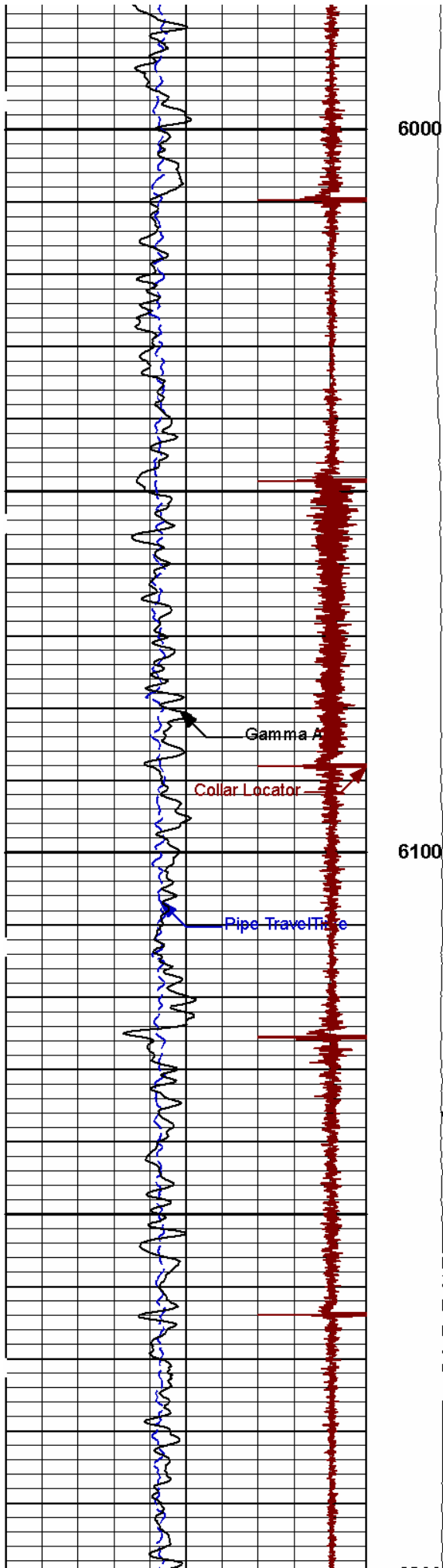


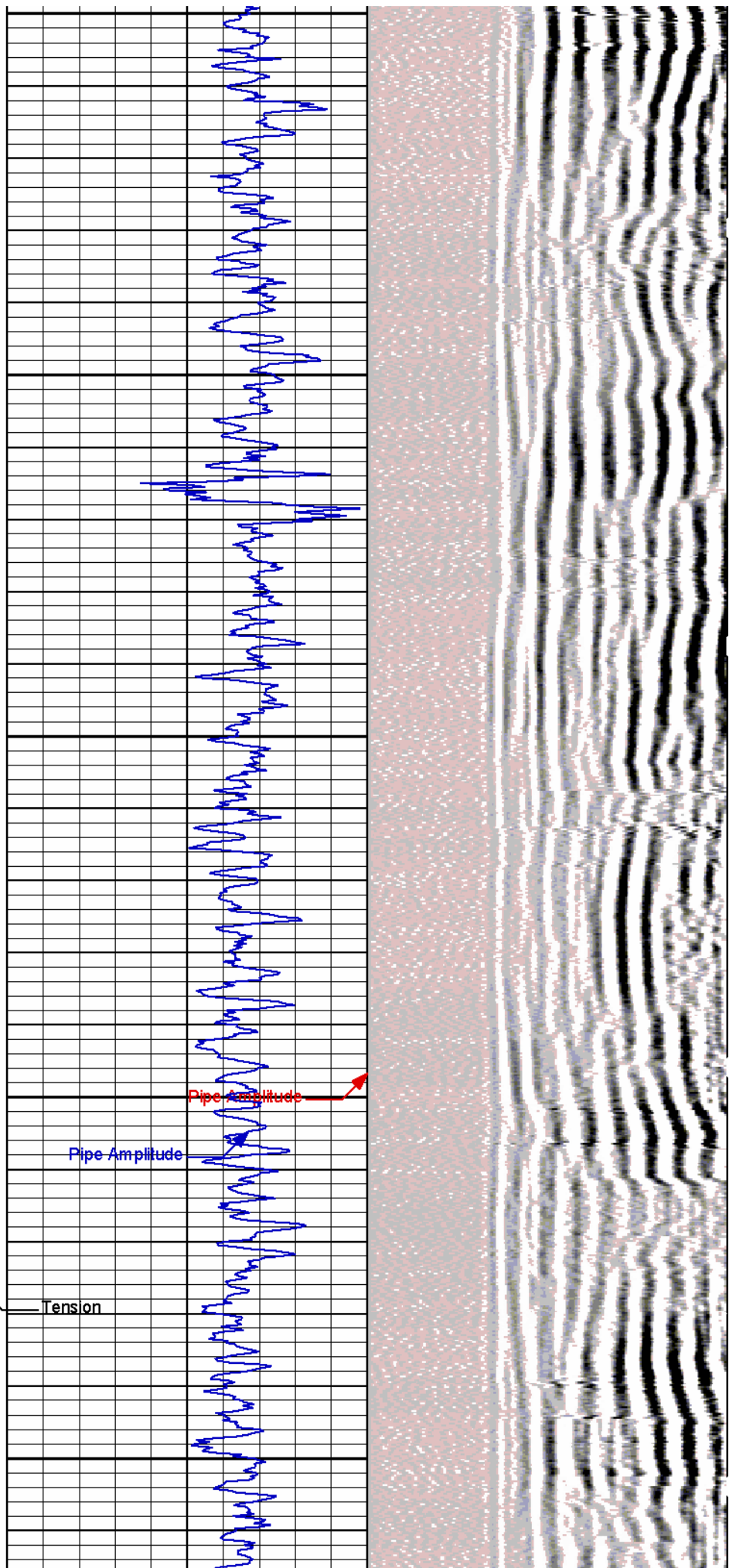
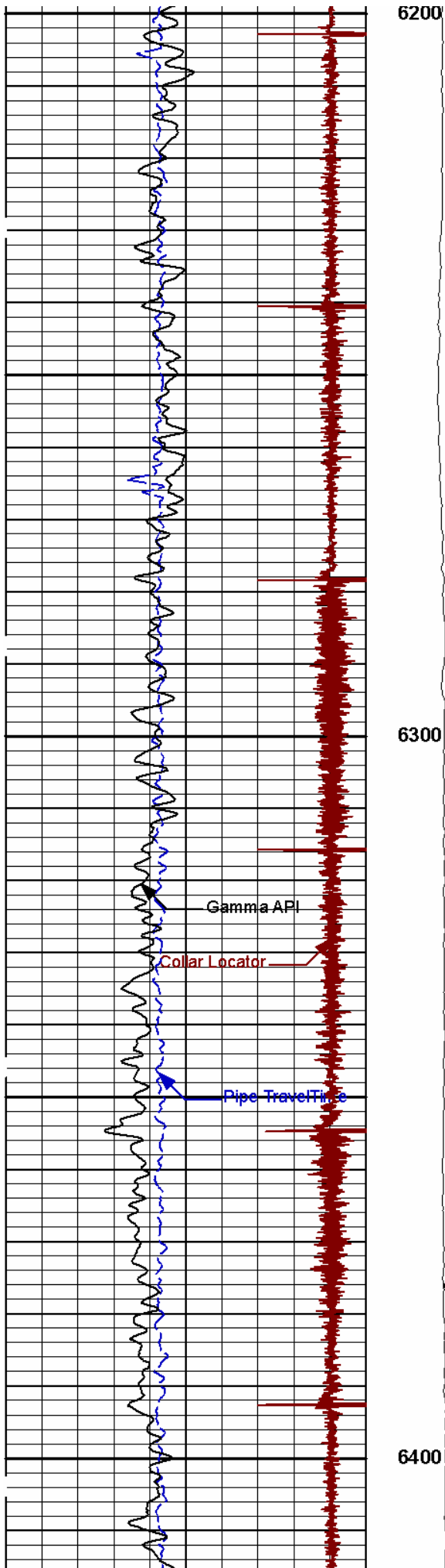


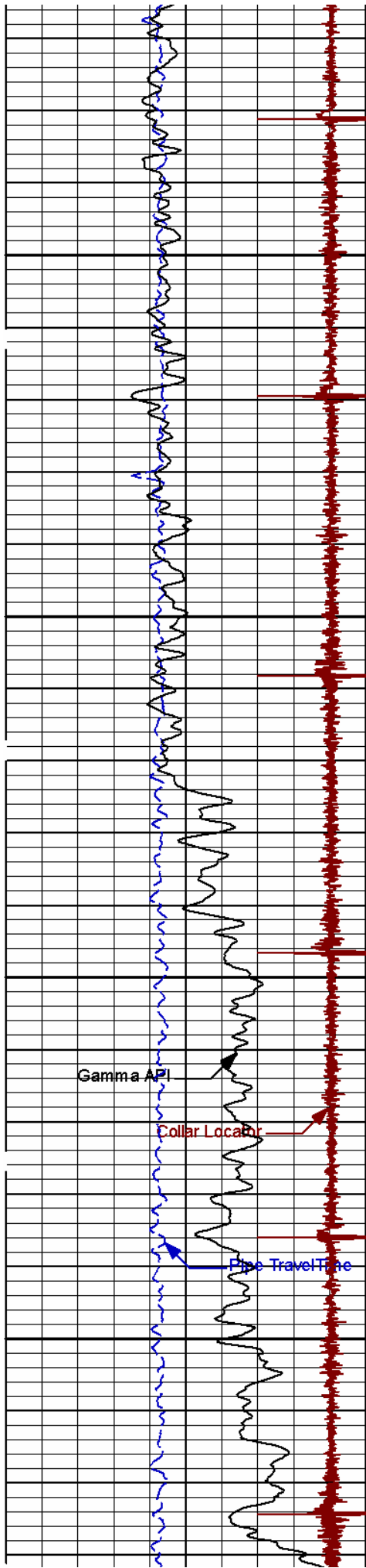






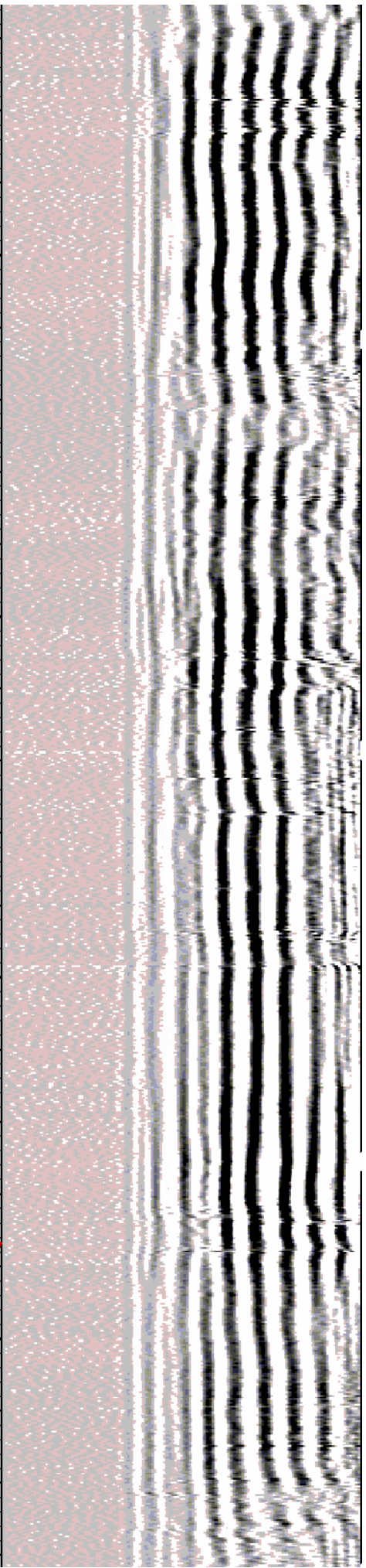
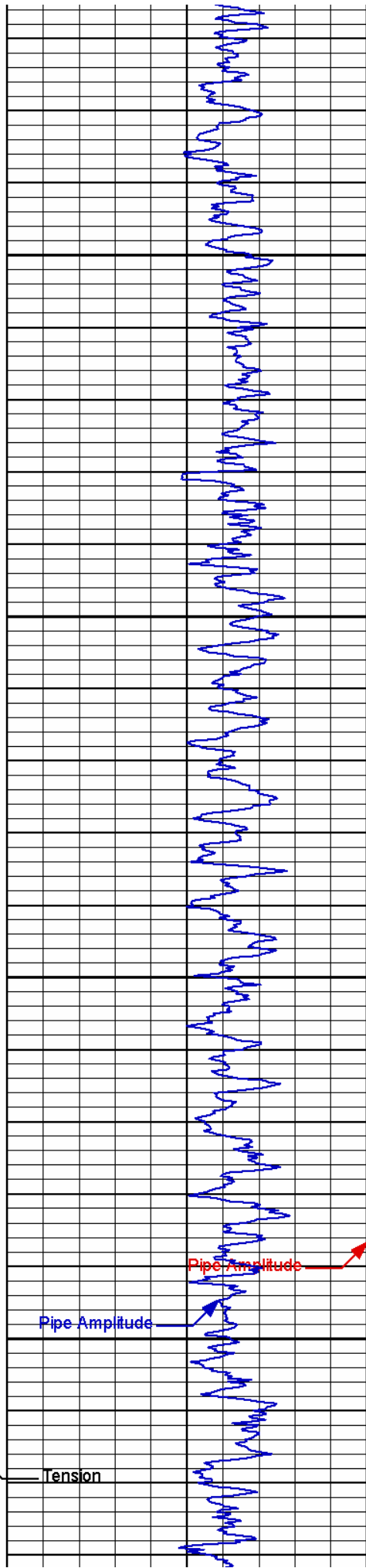


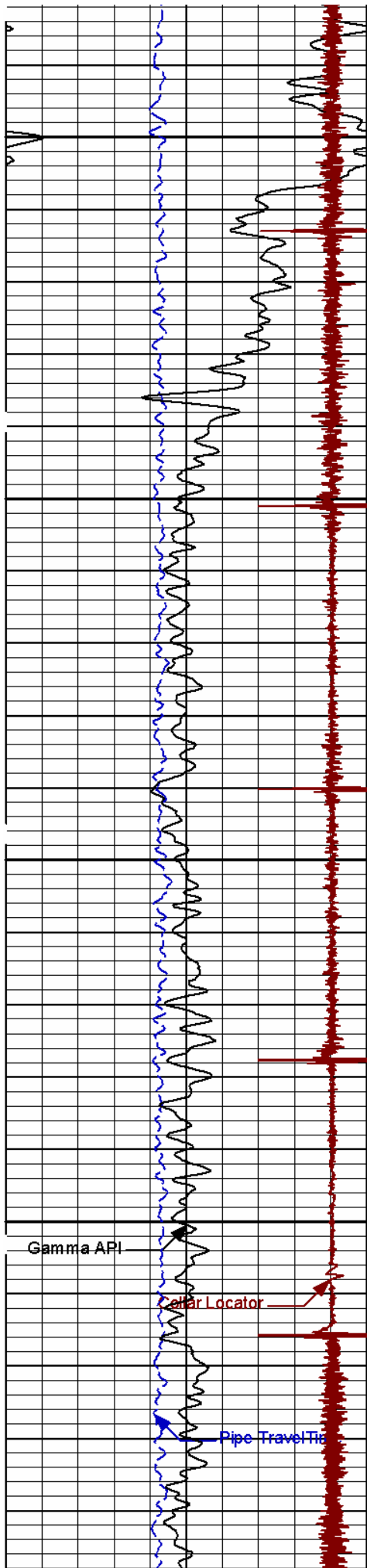




6500

6600





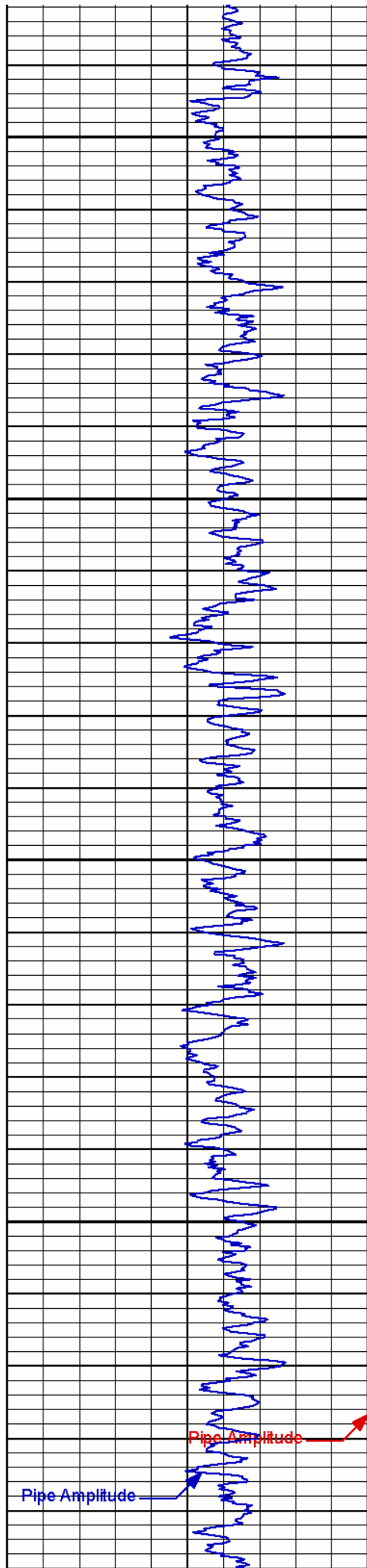
6700

6800

Gamma API

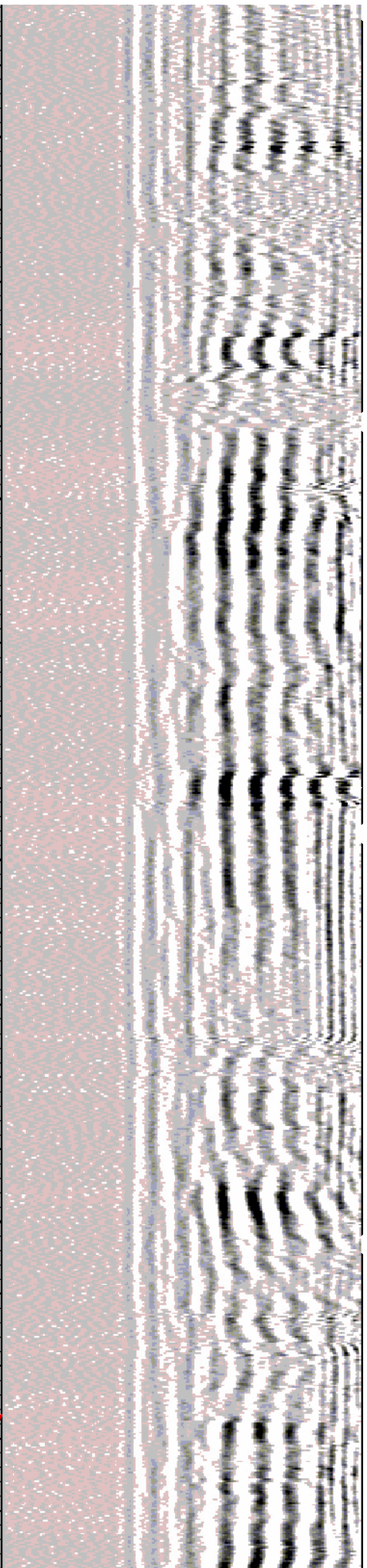
Letter Locator

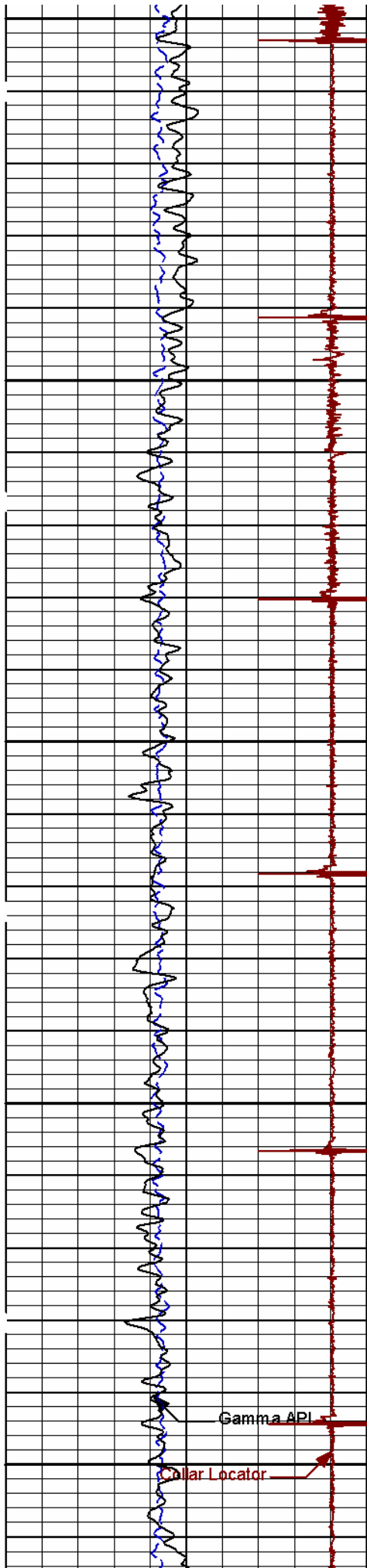
Pipe Travel Time



Pipe Amplitude

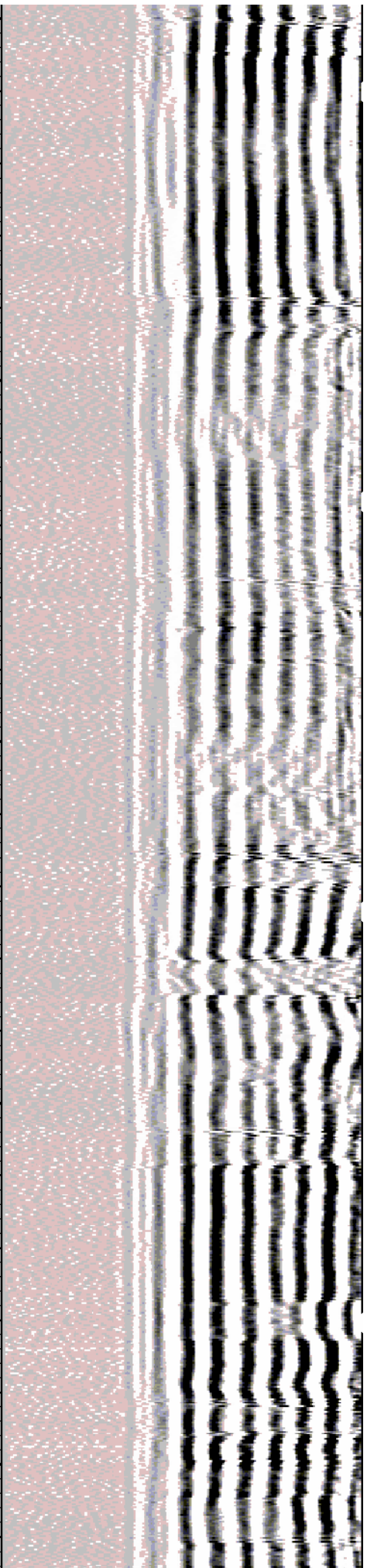
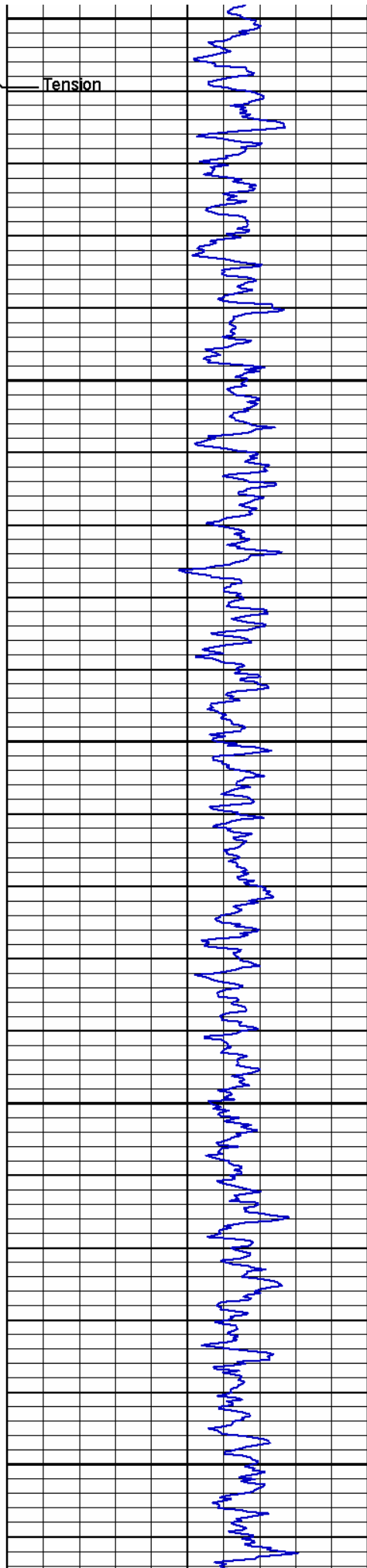
Pipe Amplitude

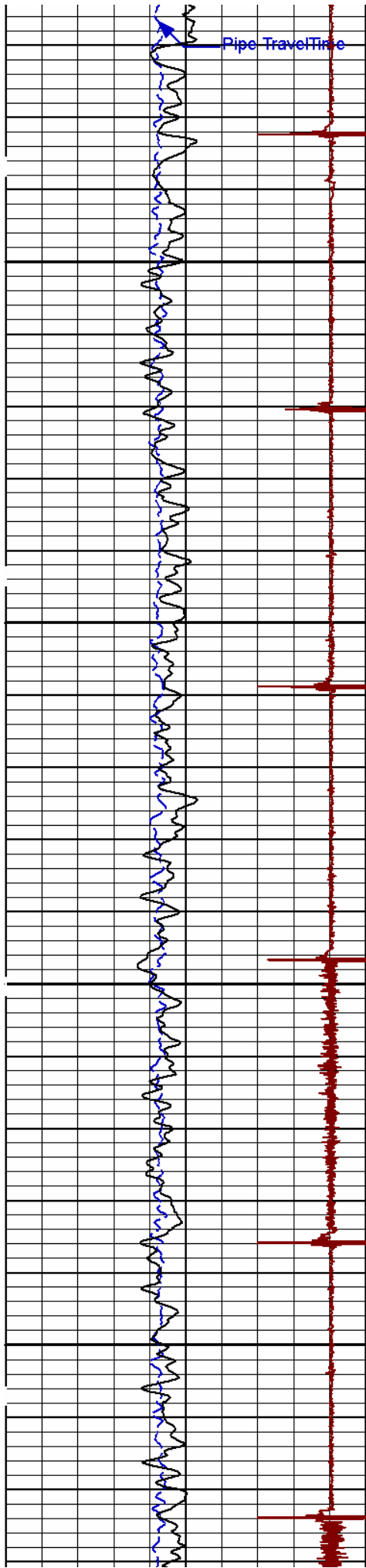




6900

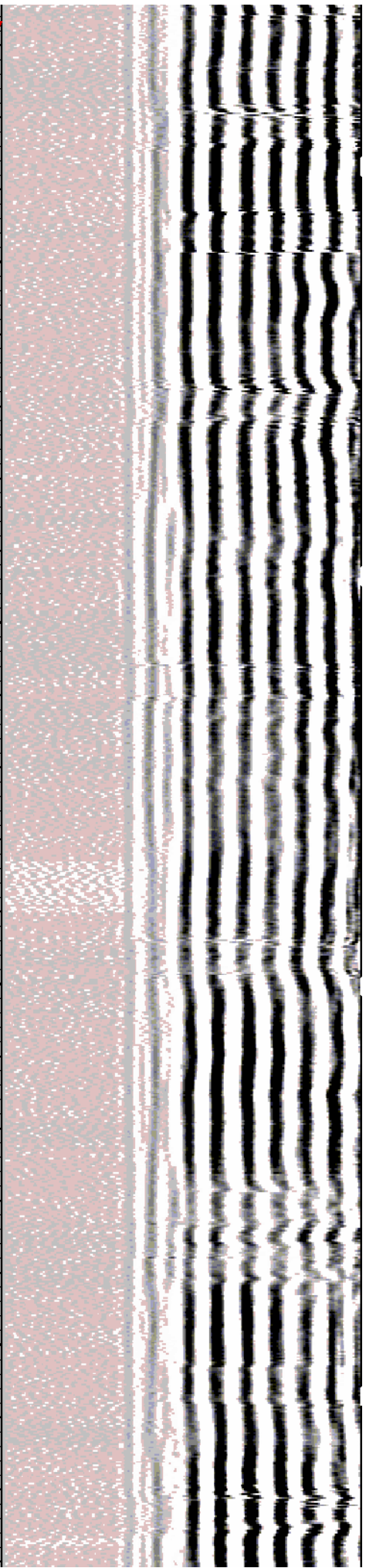
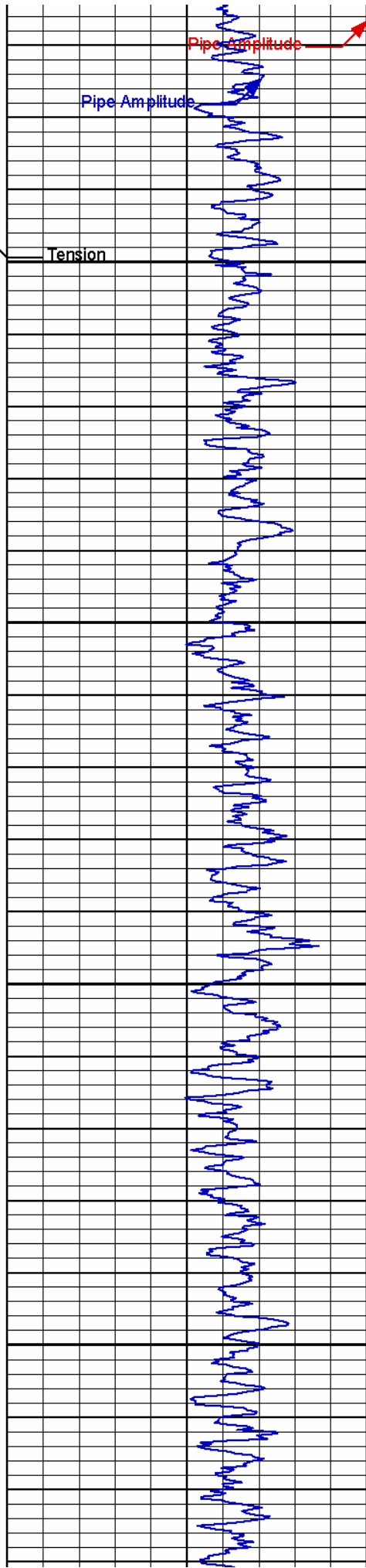
7000

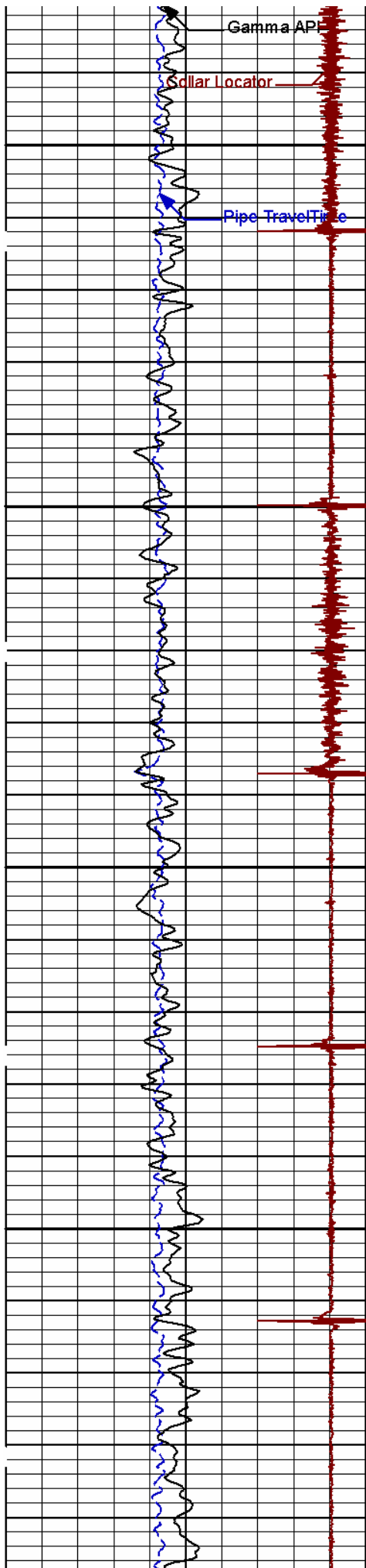




7100

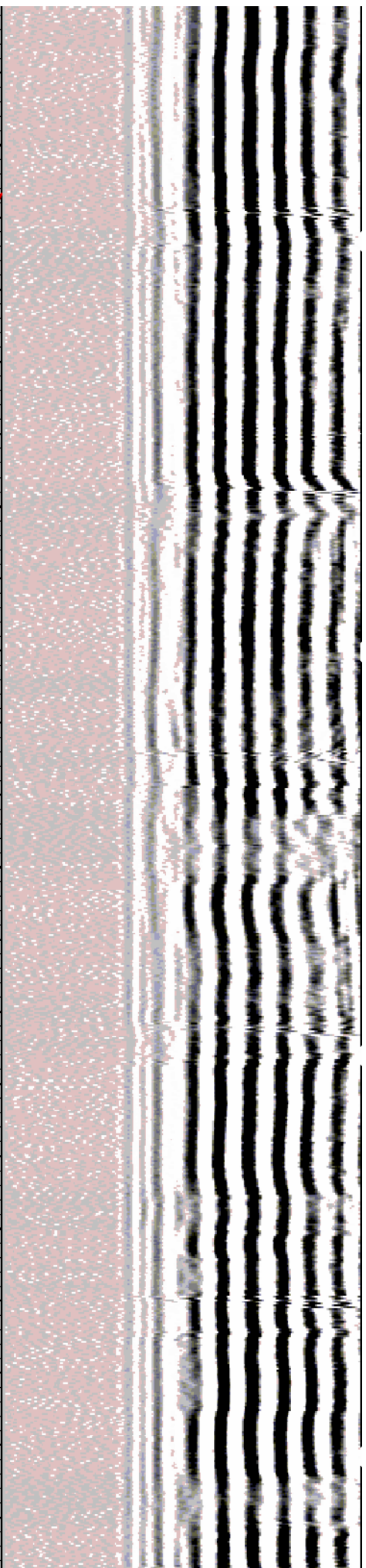
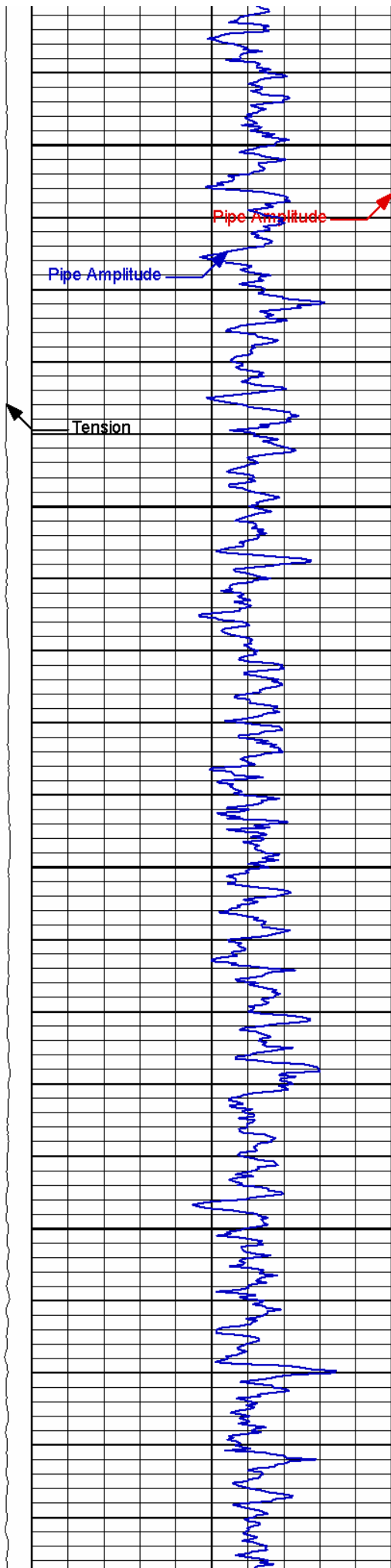
7200

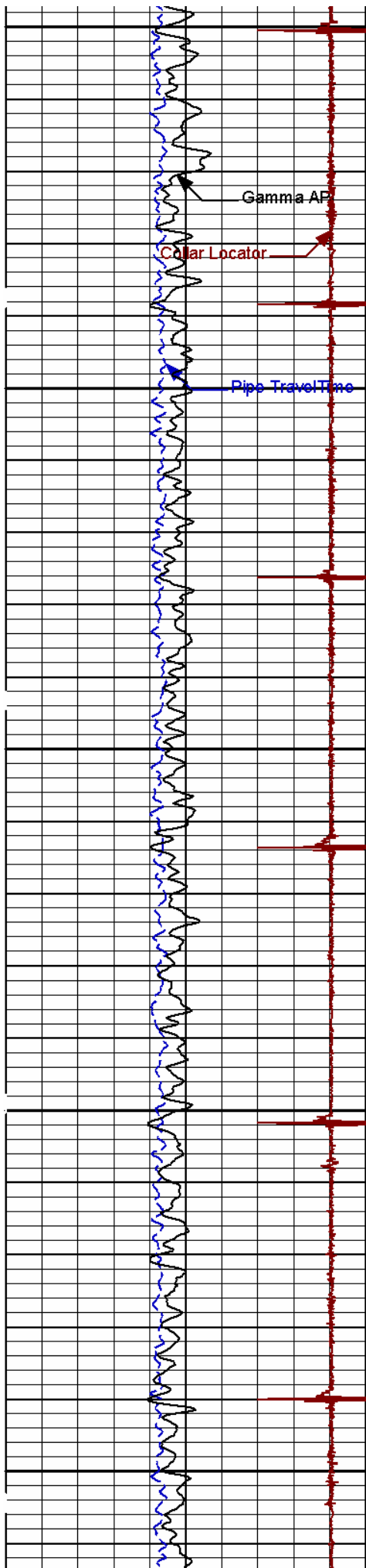




7300

7400

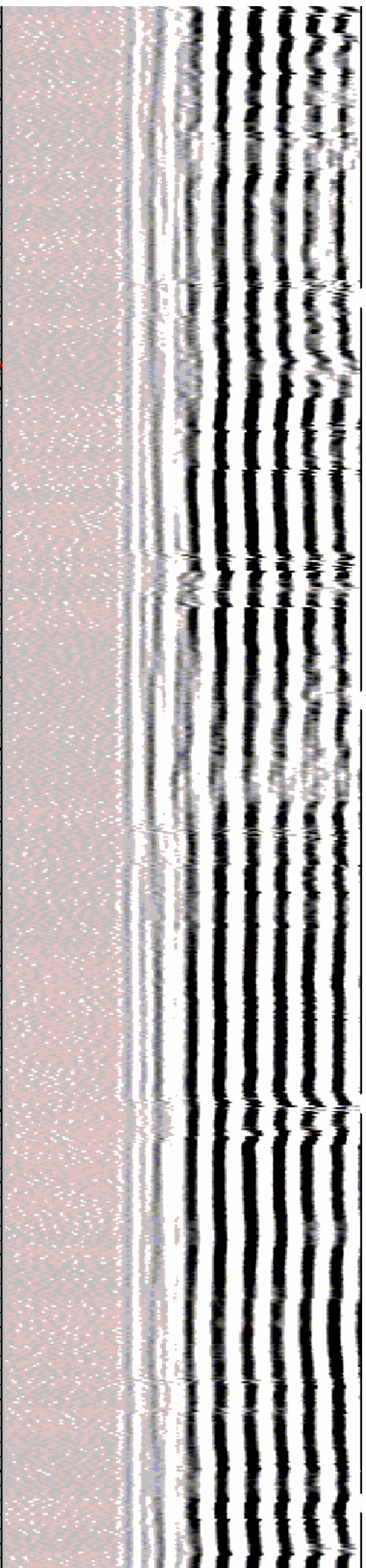
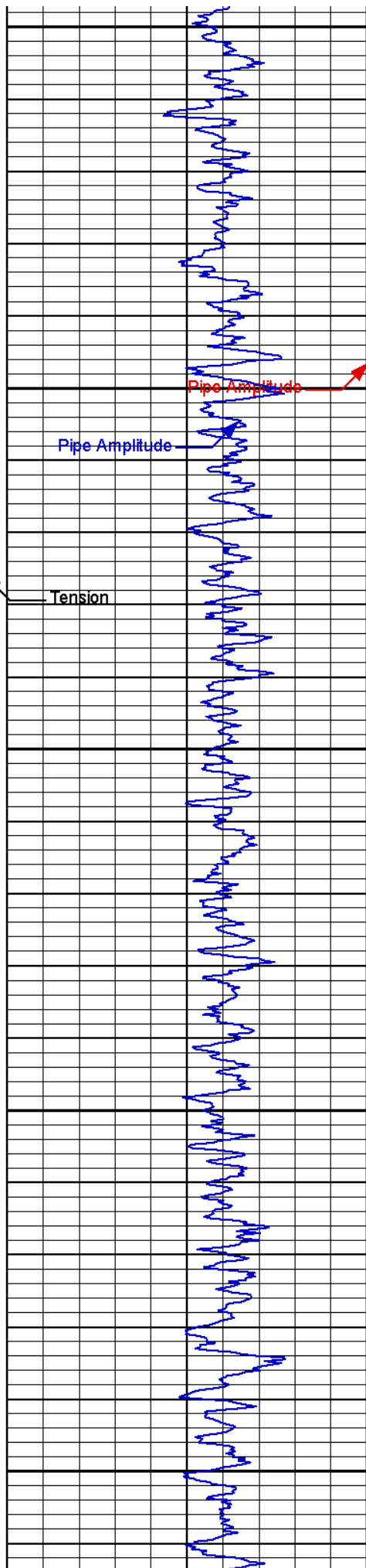


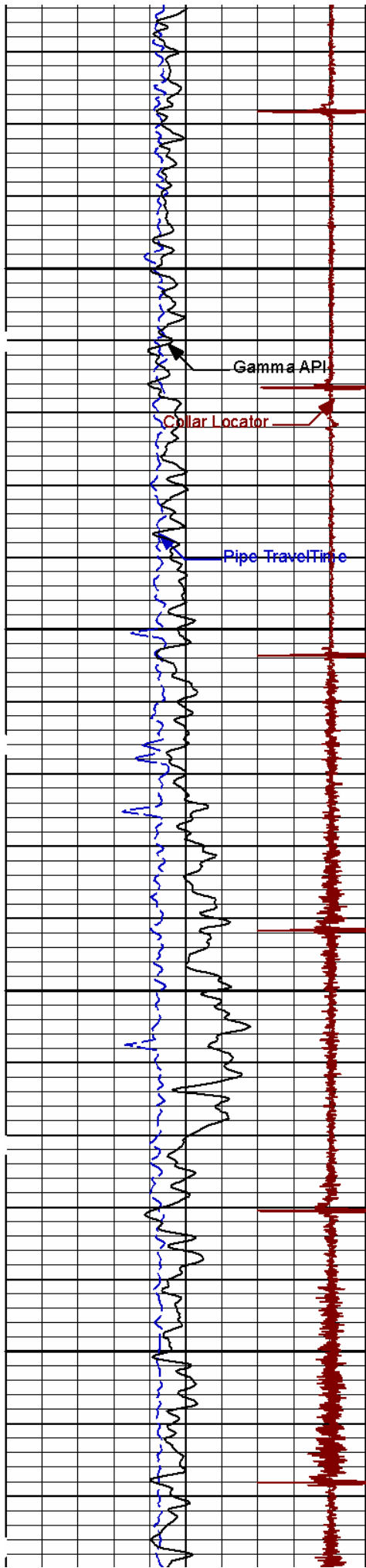


7500

7600

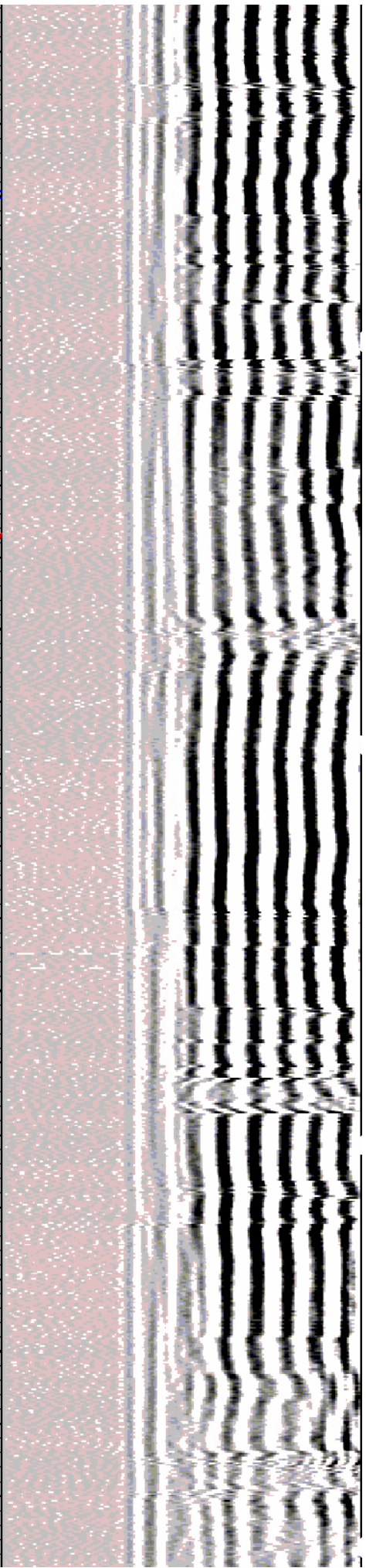
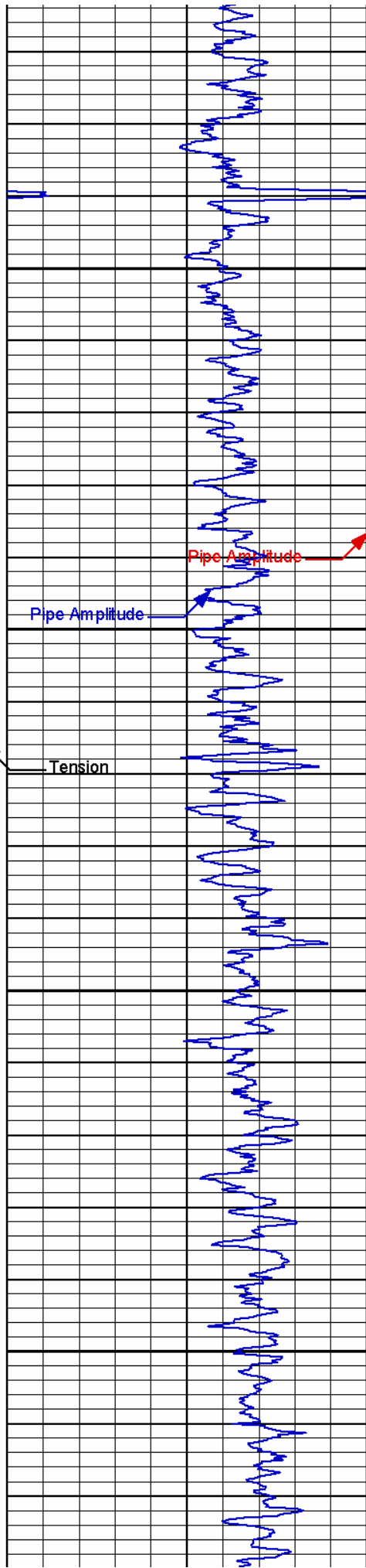
7700

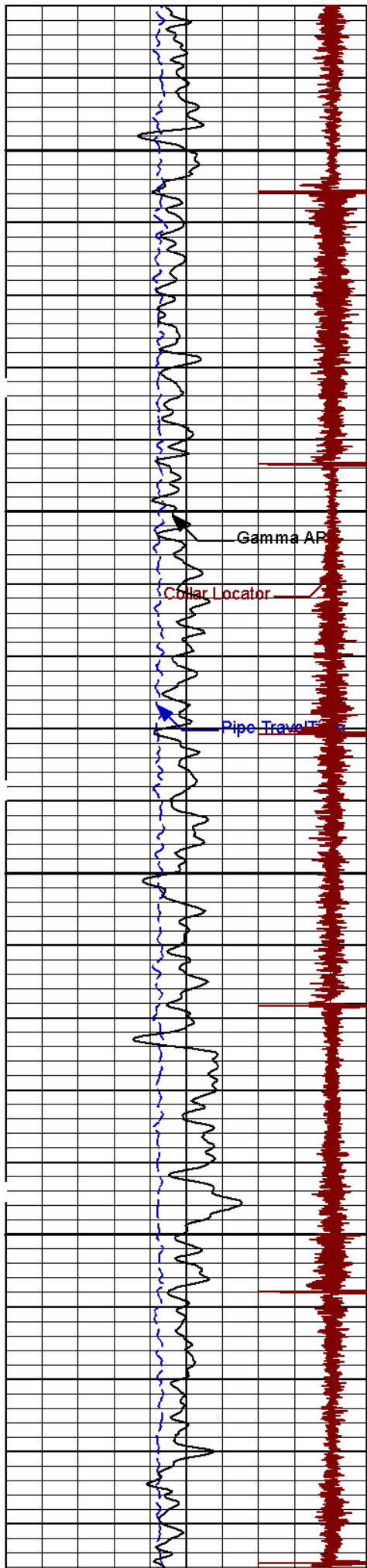




7800

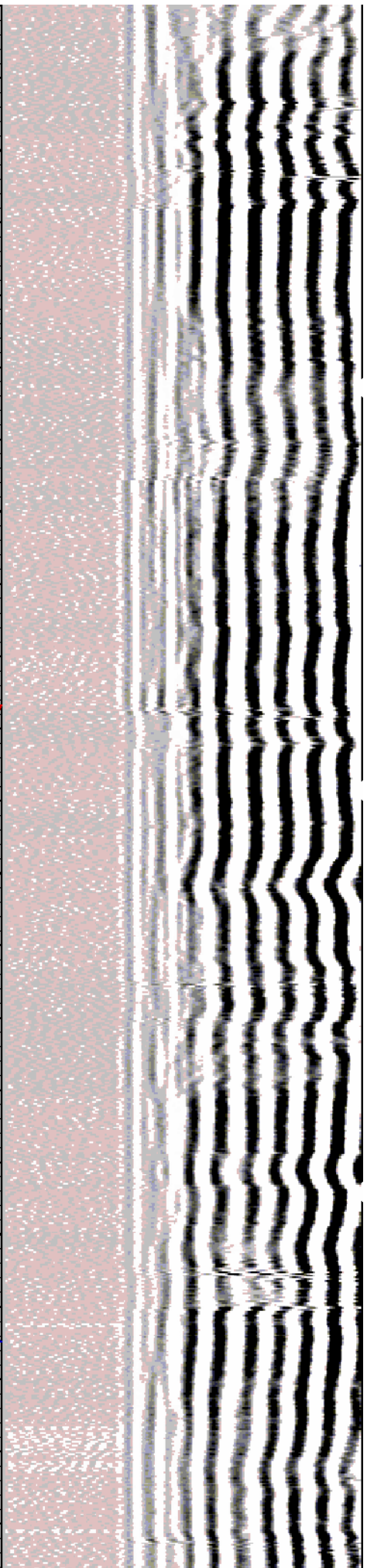
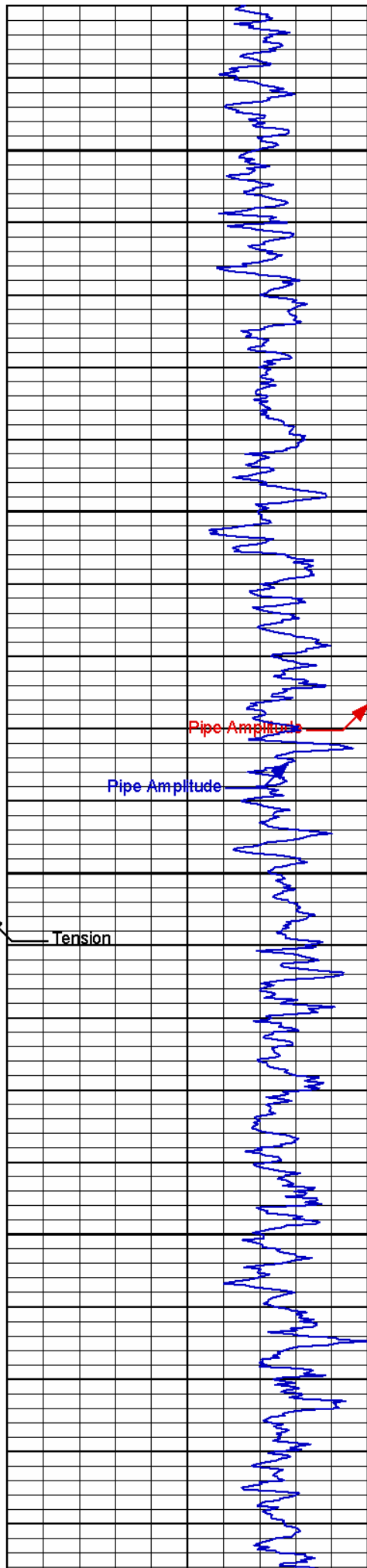
7900

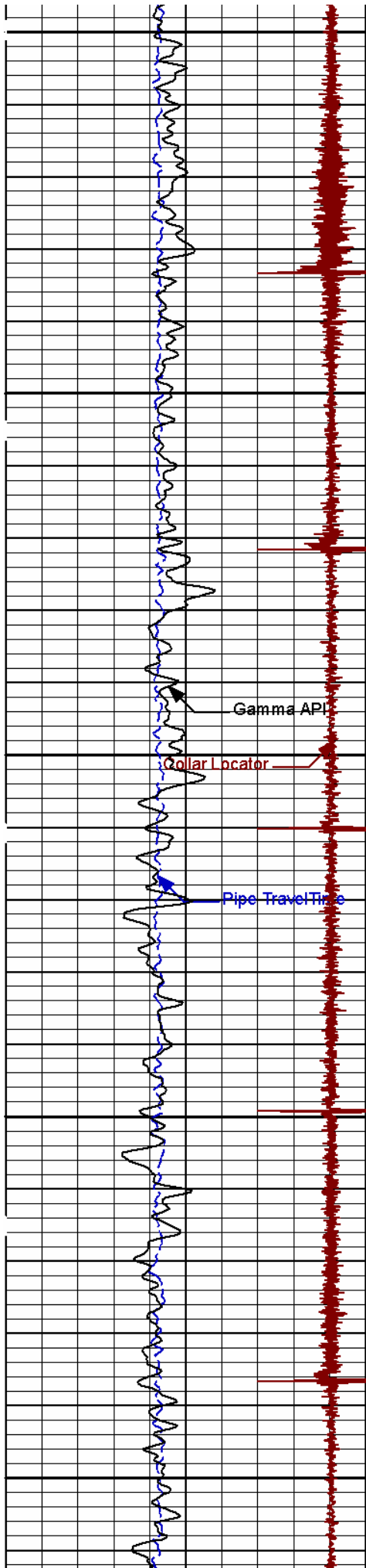




8000

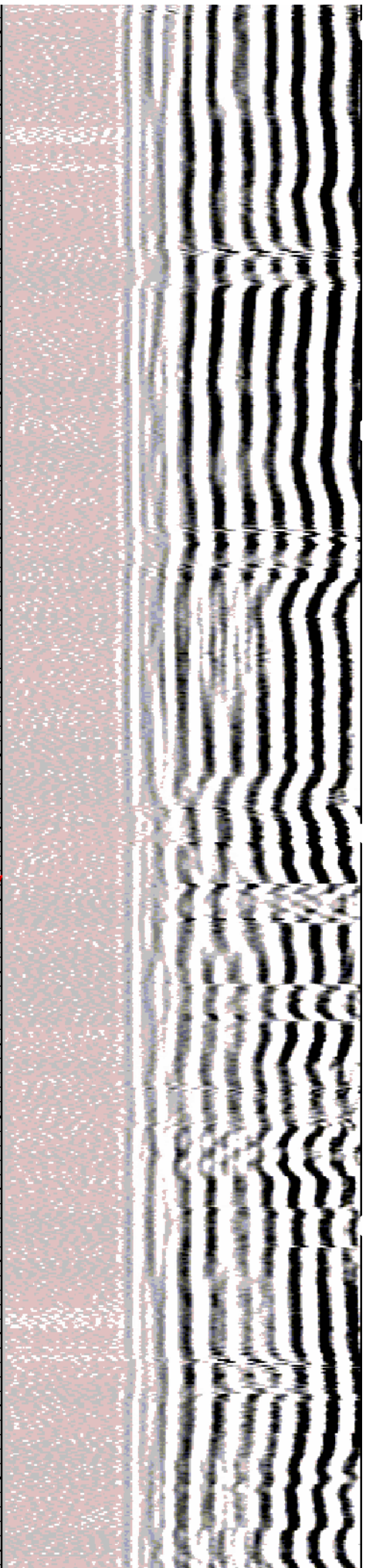
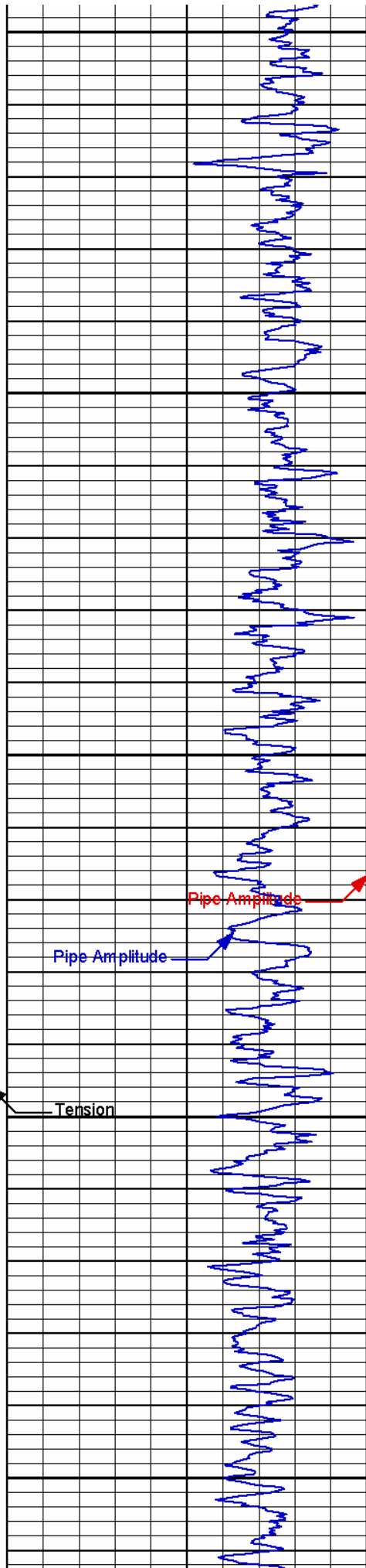
8100

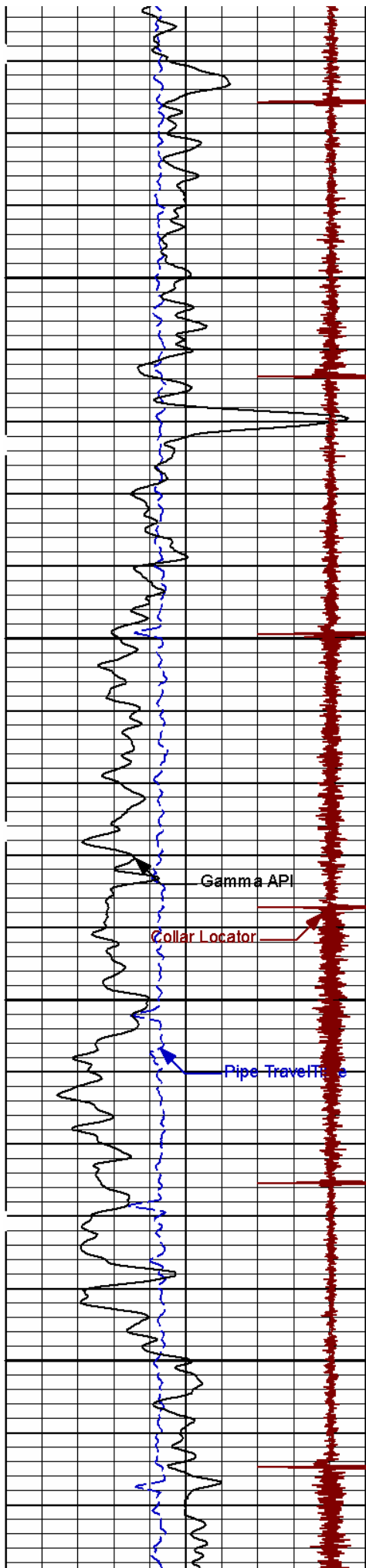




8200

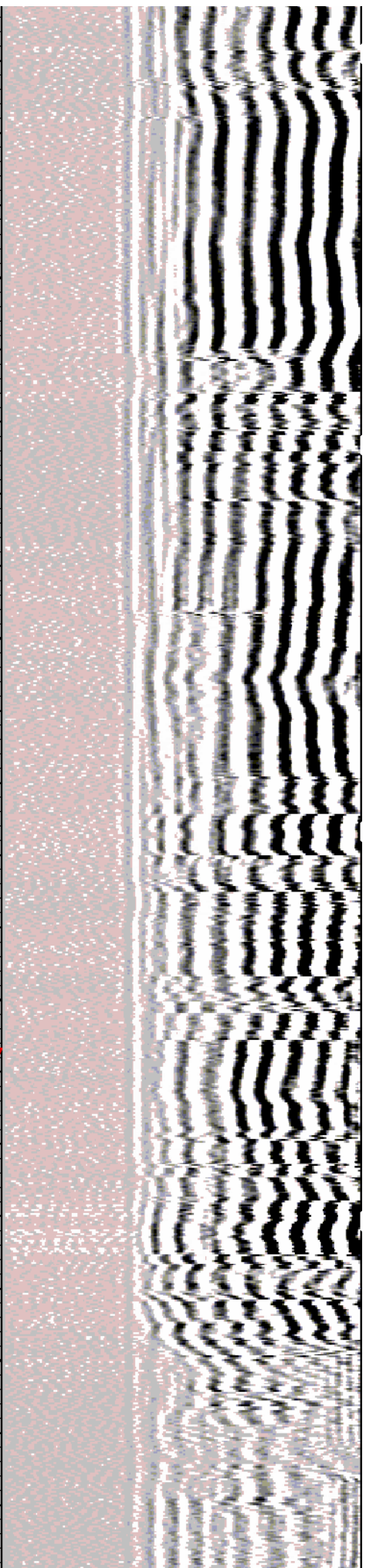
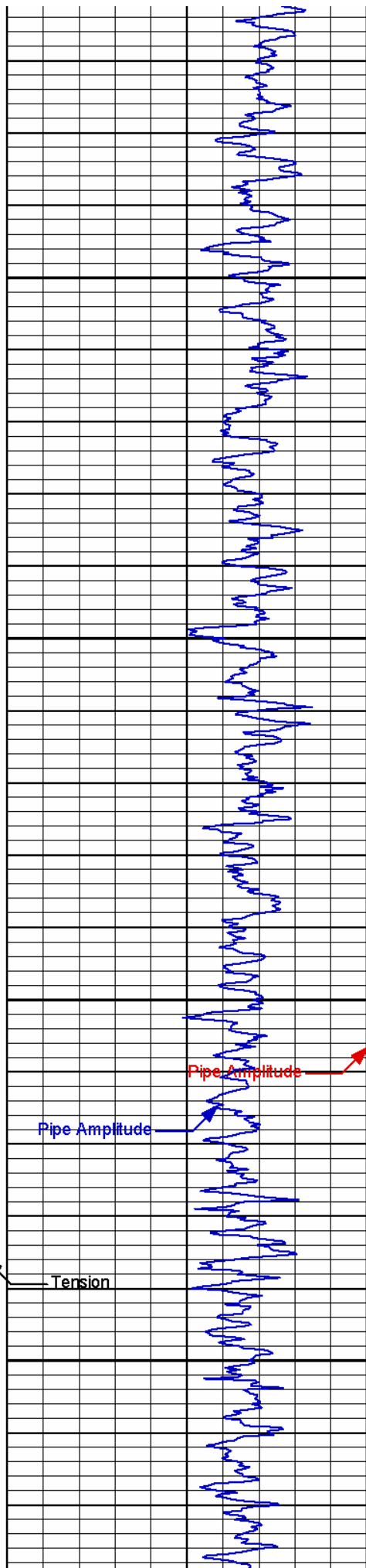
8300

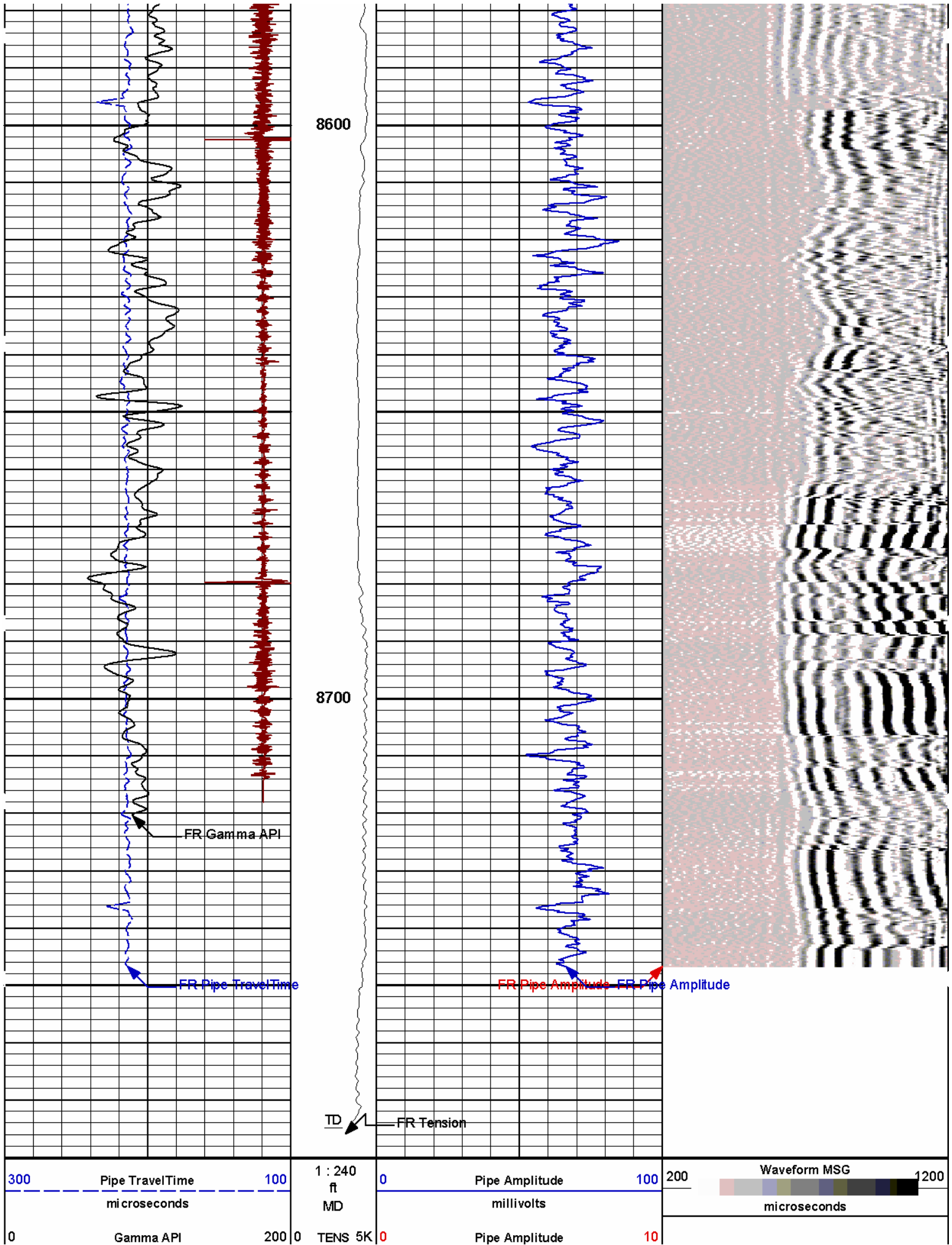




8400

8500





api	lbs	millivolts
-7 Collar Locator 3		
kilovolts		

HALLIBURTON

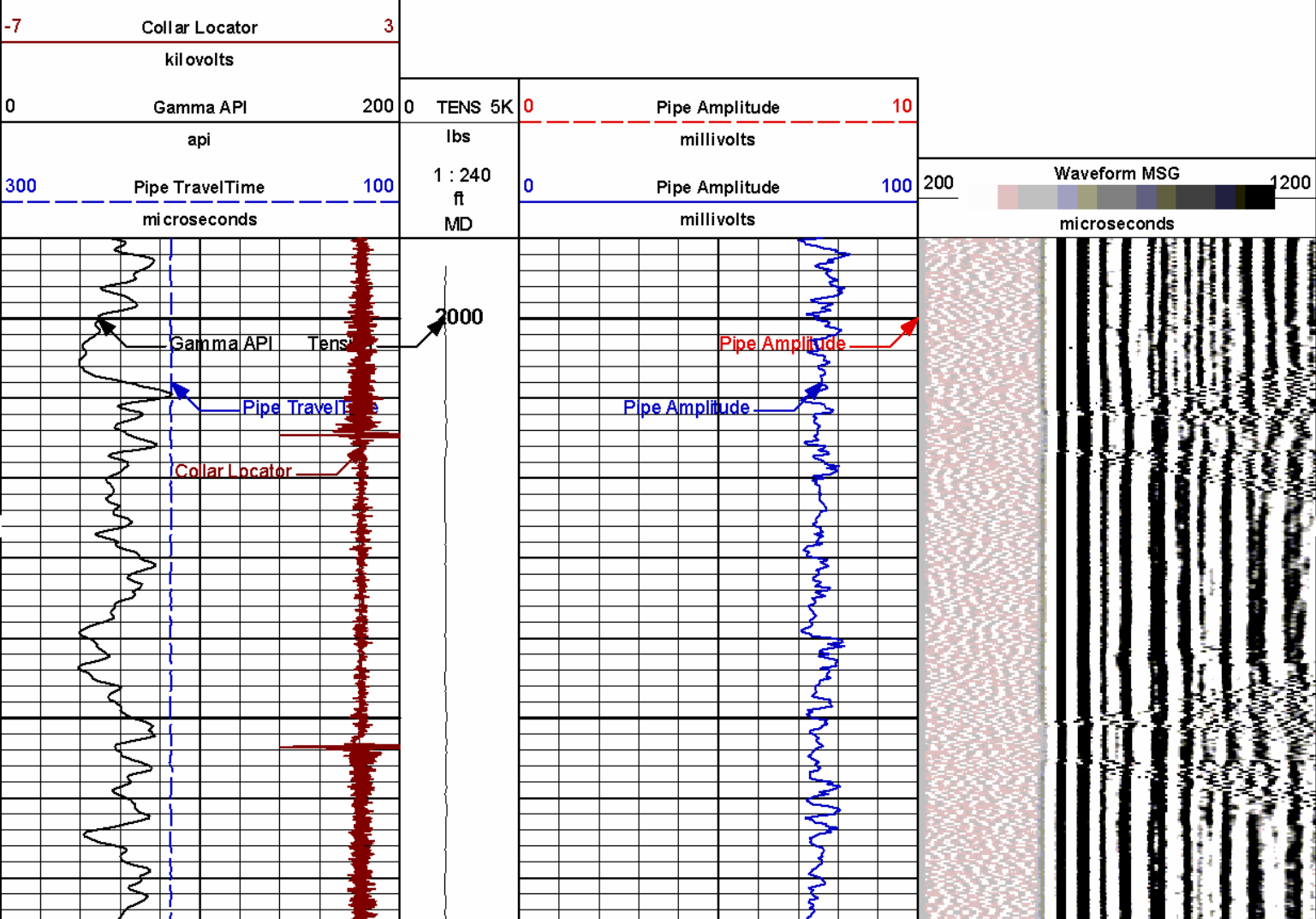
Plot Time: 22-Oct-09 04:34:07
Plot Range: 4460 ft to 8780 ft
Data: SG_118917#1R3Well BasedMAIN PASS1*
Plot File: \\CBL\FWS CBL 1_240

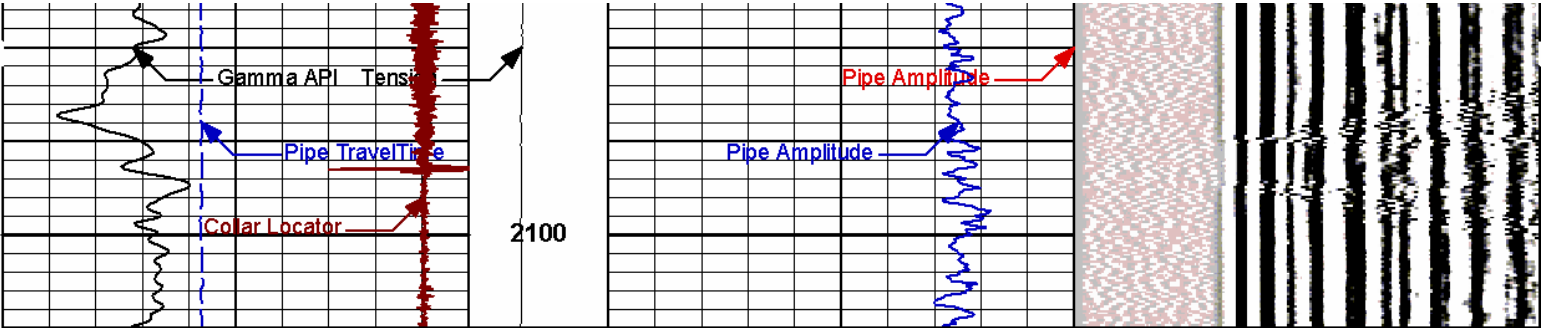
MAIN PASS 5" = 100'

HALLIBURTON

Plot Time: 22-Oct-09 04:34:07
Plot Range: 1990 ft to 2110 ft
Data: SG_118917#1R3Well BasedFREE PIPE1*
Plot File: \\CBL\FREE PIPE

FREE PIPE PASS 5" = 100'





300	Pipe TravelTime	100	1 : 240	0	Pipe Amplitude	100	200	Waveform MSG	1200
	microseconds		ft		millivolts				
			MD						
0	Gamma API	200	0 TENS 5K	0	Pipe Amplitude	10			
	api		lbs		millivolts				
-7	Collar Locator	3							
	kilovolts								

HALLIBURTON

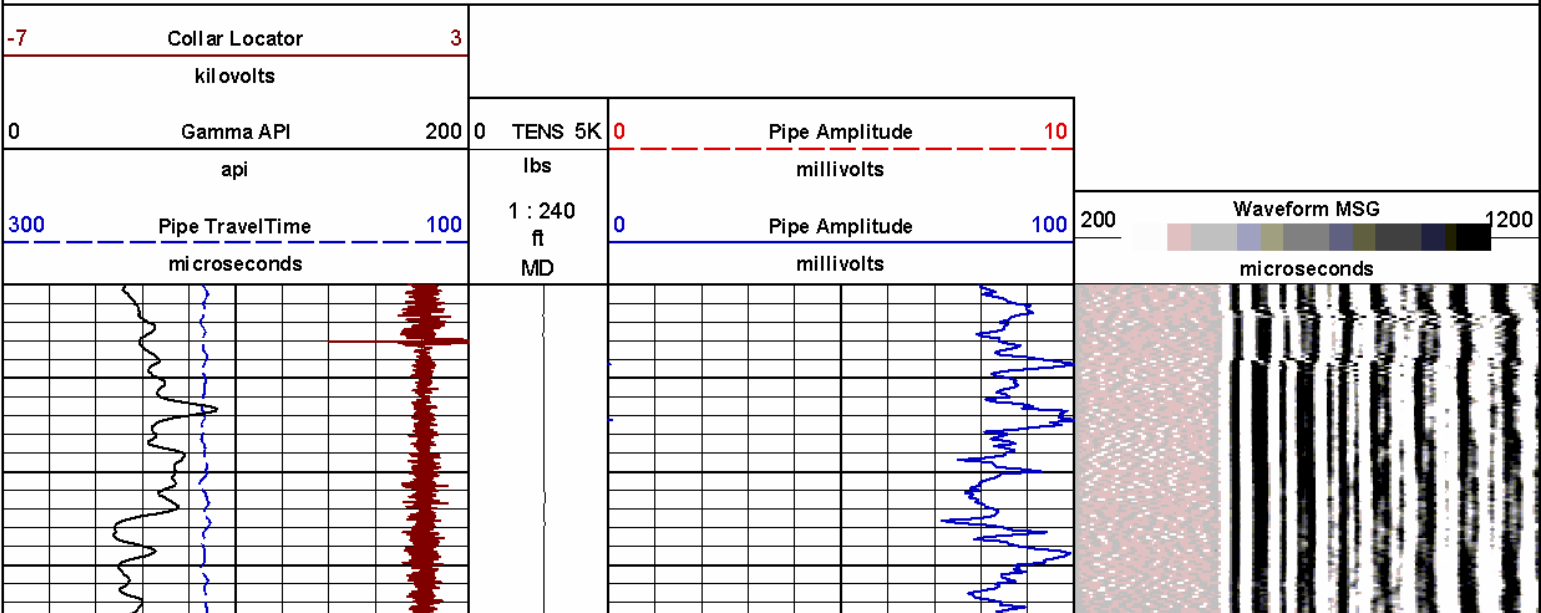
Plot Time: 22-Oct-09 04:34:10
Plot Range: 1990 ft to 2110 ft
Data: SG_118917#1R3Well Based\FREE PIPEV
Plot File: \CBL\FREE PIPE

FREE PIPE PASS 5" = 100'

HALLIBURTON

Plot Time: 22-Oct-09 04:34:10
Plot Range: 4460 ft to 4680 ft
Data: SG_118917#1R3Well Based\REPEATV
Plot File: \CBL\REPEAT

REPEAT PASS 5" = 100'



REPEAT PASS 5" = 100'

HALLIBURTON

CALIBRATION REPORT

DITS 4 TELEMETRY GAMMA SHOP CALIBRATION (GIBRALTAR)

Tool Name: D4TGX - 034

Reference Calibration Date: 14-Oct-08 10:22:59

Engineer: K. WOOD

Calibration Date: 21-Oct-09 16:05:57

Software Version: WL INSITE R2.4 (Build 20)

Calibration Version: 1

Calibrator Source S/N: 110

Calibrator API Reference: 239.00 api

Measurement	Measured	Calibrated	Units
Background	68.1	65.0	api
Background + Calibrator	318.4	304.0	api
Calibrator	235.9	239.0	api

DITS 4 TELEMETRY GAMMA FIELD CALIBRATION (GIBRALTAR)

Tool Name: D4TGX - 034

Reference Calibration Date: 21-Oct-09 16:05:57

Engineer: K. WOOD

Calibration Date: 21-Oct-09 16:08:36

Software Version: WL INSITE R2.4 (Build 20)

Calibration Version: 1

Calibrator Source S/N: 110

Calibrator API Reference: 239.00 api

Field Verification	Shop	Field	Units
Background	65.0	64.9	api
Background + Calibrator	304.0	303.8	api
Calibrator	239.0	238.9	api

Shop	Field	Difference	Tolerance
239.0	238.9	0.1	+/- 9.00

DITS 4 TELEMETRY GAMMA POST CALIBRATION (GIBRALTAR)

Tool Name: D4TGX - 034

Reference Calibration Date: 21-Oct-09 16:08:36

Engineer: K. WOOD

Calibration Date: 22-Oct-09 04:25:29

Software Version: WL INSITE R2.4 (Build 20)

Calibration Version: 1

Calibrator Source S/N: 110

Calibrator API Reference: 239.00 api

Post Verification	Field	Post	Units
Background	64.9	64.8	api
Background + Calibrator	303.8	304.2	api
Calibrator	238.9	239.4	api

Shop	Field	Post	Difference	Tolerance
239.0	238.9	239.4	-0.5	+/- 9.00

CBL-BCS SHOP CALIBRATION

Tool Name:	CBL-BCS - 350	Reference Calibration Date:	22-Oct-09 01:52:10
Engineer:	K. WOOD	Calibration Date:	22-Oct-09 01:52:33
Software Version:	WL INSITE R2.4 (Build 20)	Calibration Version:	1
Calibration Type:	Well @ 4115.60 ft	Calibration Depth:	4115.60 ft
Casing Weight:	17.00 lbpf	Casing OD:	5.500 in

Sensor	Measured	Calibrated	Difference	Units
Amplitude Tx1	71.40	71.90	0.50	mV
Pipe Reference TT	----	215.00	----	us

Sensor	Raw Value	Units
Amplitude Tx1	76.30	mV
Pipe TT from Tx1	79.00	us

CASTNAV SHOP CALIBRATION

Tool Name:	CASTNAV - 11216540	Reference Calibration Date:	01-Jan-70 00:00:00
Engineer:	K. WOOD	Calibration Date:	09-Oct-09 12:18:22
Software Version:	WL INSITE R2.4 (Build 20)	Calibration Version:	1

Orientation	Measured	Calibrated	Difference	Tolerance	Units	Pass/Fail
Rotate AccX Min	-1.0003	-1.0	2.99999999999967E-04	0.10	g	Pass
Rotate AccX Max	0.9988	1.0	1.19999999999998E-03	0.10	g	Pass
Rotate AccY Min	-0.9979	-1.0	2.09999999999999E-03	0.10	g	Pass
Rotate AccY Max	1.0012	1.0	1.20000000000009E-03	0.10	g	Pass

Sensor	Gain	Offset
Accel X	0.0003067955	-0.0032213531
Accel Y	0.0003050175	-0.0041177366

Circumferential Acoustic-Scanning Tool - F Shop Calibration

Tool Name:	CASTSCAN - 11219327	Reference Calibration Date:	14-Oct-09 11:05:03
Engineer:	K. WOOD	Calibration Date:	14-Oct-09 11:14:24
Software Version:	WL INSITE R2.4 (Build 20)	Calibration Version:	1
Transducer Type:	BROWN	Transducer S/N:	BROWN

Time and Amplitude

Measurement	Reference Shop	Shop	Difference	Tolerance	Units
Mud Cell TT	43.20	43.25	-0.0500		us
Mud Cell AMP	381.28	385.75	-4.4700		
Mud Cell Offset	2.69	2.75	-0.0600	+/- 5	us

Wave Form

Measurement	Reference Shop	Shop	Difference	Tolerance	Units
Mud Cell TT	43.33	43.36	-0.0300		us
Mud Cell AMP	383.23	386.02	-2.7900		
Mud Cell Offset	2.82	2.85	-0.0300	+/- 5	us

CALIBRATION SUMMARY

Sensor	Shop	Field	Post	Difference	Tolerance	Units
D4TGX-034						
Gamma Ray Calibrator	239.0	238.9	239.4	-0.5	+/- 9.00	api

Data: SG_118917#1R3\0002 FAST CAST\VDLE

Date: 22-Oct-09 04:25:59

HALLIBURTON

CUSTOMER EVENT LOG

Event Type	Time & Date	Depth (ft)	Event Description
	21-Oct-09 22:01:03	666.00	Logging 001 21-Oct-09 22:01 Dn @666.0f
	21-Oct-09 22:09:08	1716.60	Halting 001 21-Oct-09 22:01 Dn @666.0f
	21-Oct-09 22:25:33	2382.75	Logging 002 21-Oct-09 22:25 Up @2382.8f
	21-Oct-09 22:28:43	2293.54	Halting 002 21-Oct-09 22:25 Up @2382.8f
	21-Oct-09 22:30:00	2293.75	Logging 003 21-Oct-09 22:29 Up @2293.8f
	21-Oct-09 22:34:01	2138.87	Halting 003 21-Oct-09 22:29 Up @2293.8f
	21-Oct-09 22:35:58	2178.50	Logging 004 21-Oct-09 22:35 Up @2178.5f
	21-Oct-09 22:37:54	2083.30	Halting 004 21-Oct-09 22:35 Up @2178.5f
	21-Oct-09 22:40:51	2179.25	Logging 005 21-Oct-09 22:40 Up @2179.3f
	21-Oct-09 22:44:31	1994.34	Halting 005 21-Oct-09 22:40 Up @2179.3f
	21-Oct-09 22:57:30	4900.25	Logging 006 21-Oct-09 22:57 Up @4900.3f
	21-Oct-09 22:59:26	4777.99	Halting 006 21-Oct-09 22:57 Up @4900.3f
	21-Oct-09 23:12:39	7633.75	Logging 007 21-Oct-09 23:12 Dn @7633.8f
	21-Oct-09 23:12:48	7757.38	Halting 007 21-Oct-09 23:12 Dn @7633.8f
	22-Oct-09 01:10:35	2221.00	Logging 008 22-Oct-09 01:10 Dn @2221.0f
	22-Oct-09 01:12:44	2611.62	Halting 008 22-Oct-09 01:10 Dn @2221.0f
	22-Oct-09 01:12:53	2614.25	Logging 009 22-Oct-09 01:12 Up @2614.3f
	22-Oct-09 01:15:43	2528.27	Halting 009 22-Oct-09 01:12 Up @2614.3f
	22-Oct-09 01:17:04	2497.25	Logging 010 22-Oct-09 01:17 Dn @2497.3f
	22-Oct-09 01:24:02	2784.61	Halting 010 22-Oct-09 01:17 Dn @2497.3f
	22-Oct-09 01:25:29	2691.50	Logging 011 22-Oct-09 01:25 Dn @2691.5f
	22-Oct-09 01:27:13	2826.55	Halting 011 22-Oct-09 01:25 Dn @2691.5f
	22-Oct-09 01:32:38	4715.25	Logging 012 22-Oct-09 01:32 Dn @4715.3f
	22-Oct-09 01:39:59	5233.67	Halting 012 22-Oct-09 01:32 Dn @4715.3f
	22-Oct-09 01:40:29	5232.75	Logging 013 22-Oct-09 01:40 Up @5232.8f
	22-Oct-09 01:47:21	4133.05	Halting 013 22-Oct-09 01:40 Up @5232.8f
	22-Oct-09 01:48:27	4068.25	Logging 014 22-Oct-09 01:48 Dn @4068.3f
	22-Oct-09 01:51:37	4133.61	Halting 014 22-Oct-09 01:48 Dn @4068.3f
	22-Oct-09 01:52:41	4133.75	Logging 015 22-Oct-09 01:52 Up @4133.8f
	22-Oct-09 01:54:54	4045.20	Halting 015 22-Oct-09 01:52 Up @4133.8f
	22-Oct-09 02:13:36	8309.50	Logging 016 22-Oct-09 02:13 Dn @8309.5f
	22-Oct-09 02:22:32	8771.34	Halting 016 22-Oct-09 02:13 Dn @8309.5f
	22-Oct-09 02:23:23	8775.25	Logging 017 22-Oct-09 02:23 Up @8775.3f
	22-Oct-09 03:44:29	4214.57	Halting 017 22-Oct-09 02:23 Up @8775.3f
	22-Oct-09 03:47:34	4781.25	Logging 018 22-Oct-09 03:47 Up @4781.3f
	22-Oct-09 03:54:49	4373.88	Halting 018 22-Oct-09 03:47 Up @4781.3f


Data: SG_118917#1R3\0002 FAST CAST\ENAU00056710

Date: 22-Oct-09 03:58:13

HALLIBURTON

TOOL STRING DIAGRAM REPORT

Description	O.D.	Diagram	Sensors @ Delays	Length	Accumulated Length
					64.64 ft
RWCH-C11013846 135.00 lbs	Ø 3.625 in →		← Load Cell @ 60.96 ft ← BH Temperature @ 60.39 ft	6.25 ft	
CCLD4-CCL 15.00 lbs	Ø 3.675 in →		← CCL @ 57.68 ft	2.00 ft	58.39 ft
			← GammaRay @ 54.71 ft		56.39 ft
D4TGX-034 221.00 lbs	Ø 3.625 in →		← Z-Accelerometer @ 47.98 ft	9.63 ft	
					46.76 ft
CBL-BCS-350 475.00 lbs	Ø 3.625 in →		← Tx1 Amp & TT @ 28.13 ft ← Tx1 MSG @ 27.13 ft	28.75 ft	
					18.01 ft

CAST-M-E065 190.00 lbs		Ø 3.625 in →			10.25 ft	
CASTNAV-11216540 38.00 lbs		Ø 3.625 in →	← CASTNAV @ 5.13 ft		7.76 ft	
CASTSCAN-11219327 78.00 lbs		Ø 3.625 in →			4.76 ft	
CastScanHead 3.625In-11219327 10.00 lbs		Ø 3.625 in →	← CASTSCANNER @ 0.16 ft		0.33 ft	
					0.33 ft	0.00 ft
Mnemonic	Tool Name	Serial Number	Weight (lbs)	Length (ft)	Accumulated Length (ft)	Max.Log. Speed (fpm)
RWCH	Releasable Wireline Cable Head	C11013846	135.00	6.25	58.39	300.00
CCL	Casing Collar Locator D4TG	CCL	15.00	2.00	56.39	300.00
D4TGX	DITS Telemetry Gamma - Gibraltar Class	034	221.00	9.63	46.76	60.00
CBL-BCS	M305 - CBL - BCS TIP	350	475.00	28.75	18.01	60.00
CAST-M	Circumferential Acoustic-Scanning Tool - Medium	E065	190.00	10.25	7.76	45.00
OBCEN	Centralizer - 29 in.Overbody	GJ02	12.00	2.42	*	14.73
NAV	Cast Directional Sub V	11216540	38.00	3.00	4.76	300.00
OBCEN	Centralizer - 29 in.Overbody	GJ03	12.00	2.42	*	5.52
CASTSCAN	Cast Scanner	11219327	78.00	4.43	0.33	300.00
OBCEN	Centralizer - 29 in.Overbody	GJ04	12.00	2.42	*	0.77
CHD3P625	Cast Scan Head Diameter = 3.625 In	11219327	10.00	0.33	0.00	300.00
Total			1,198.00	64.64		
* Not included in Total Length and Length Accumulation.						
Data: SG_118917#1R3V0002 FAST CASTV017 22-Oct-09 02:23 Up @8775.3f						
Date: 22-Oct-09 03:12:41						

COMPANY	SG INTERESTS		
WELL	FEDERAL 11-89-17 #1		
FIELD	BULL MOUNTAIN		
COUNTY	GUNNISON	STATE	CO
HALLIBURTON		CEMENT BOND LOG	