

Company	Pioneer Natural Resources		
Well	Brahms 12-24		
Field	Purgatoire River		
County	Las Animas	State	Colorado
Location:	API # : 05 071 09703 00		Other Services
	2329' FNL & 735' FWL		None
SEC 24 TWP 33S RGE 67W			Elevation
Permanent Datum	Ground Level	Elevation	7434'
Log Measured From	Kelly Bushing 4' AGL		
Drilling Measured From	Kelly Bushing		
			K.B. 7438'
			D.F. -----
			G.L. 7434'

Date	12-23-09						
Run Number	One						
Depth Driller	2270'						
Depth Logger	2193'						
Bottom Logged Interval	2192'						
Top Log Interval	Surface						
Open Hole Size	7 7/8"						
Type Fluid	Water						
Density / Viscosity	////						
Max. Recorded Temp.	Deg. F						
Estimated Cement Top	Surface						
Time Well Ready	ROA						
Time Logger on Bottom	10:00 a.m.						
Equipment Number	T747						
Location	Trinidad. Co.						
Recorded By	L. Smith						
Witnessed By	Mr. Tom Beardslee						
Borehole Record				Tubing Record			
Run Number	Bit	From	To	Size	Weight	From	To
Casing Record	Size			Vgd/Ft	Top		Bottom
Surface String	8 5/8"			24#	0		879'
Prot. String							
Production String	5.5"			17#	0		n/a
Liner							

<<< Fold Here >>>

All interpretations are opinions based on inferences from electrical or other measurements and we cannot and do not guarantee the accuracy or correctness of any interpretation, and we shall not, except in the case of gross or willful negligence on our part, be liable or responsible for any loss, costs, damages, or expenses incurred or sustained by anyone resulting from any interpretation made by any of our officers, agents or employees. These interpretations are also subject to our general terms and conditions set out in our current Price Schedule.

Comments

Up Wet Canyon, take second right drive thru the stagecoach, up the hill, thru the Cheryl and take second left to location.

Short Joint 1894'-1908'

Thanks for using The Perforators

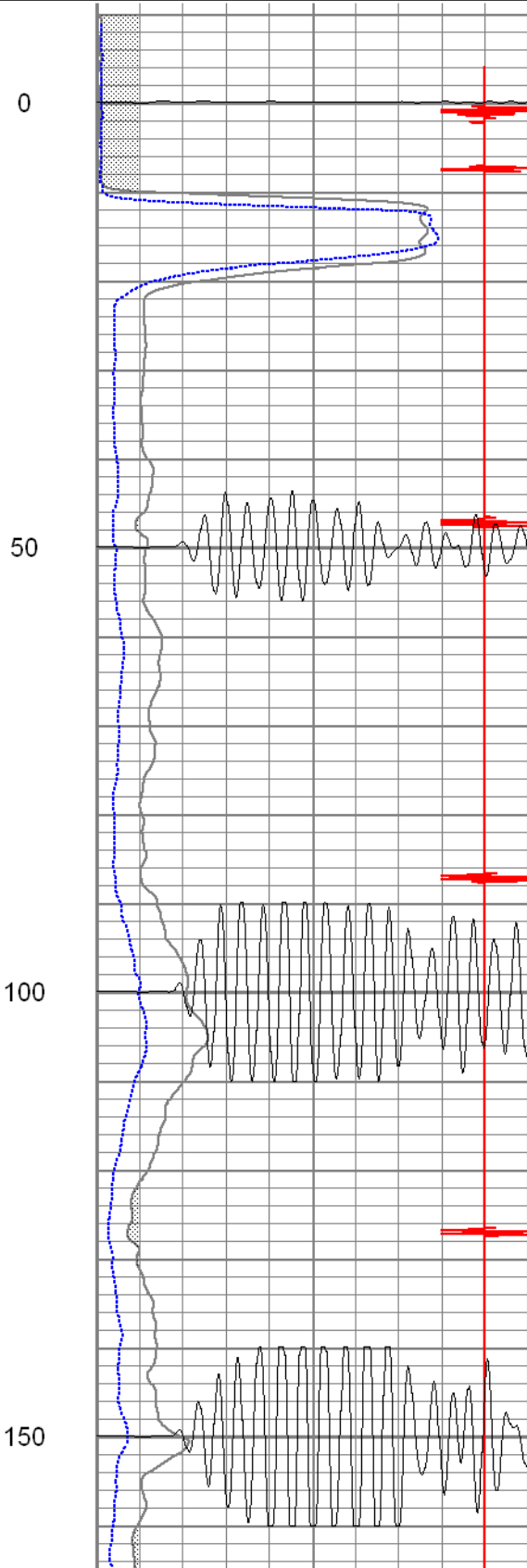
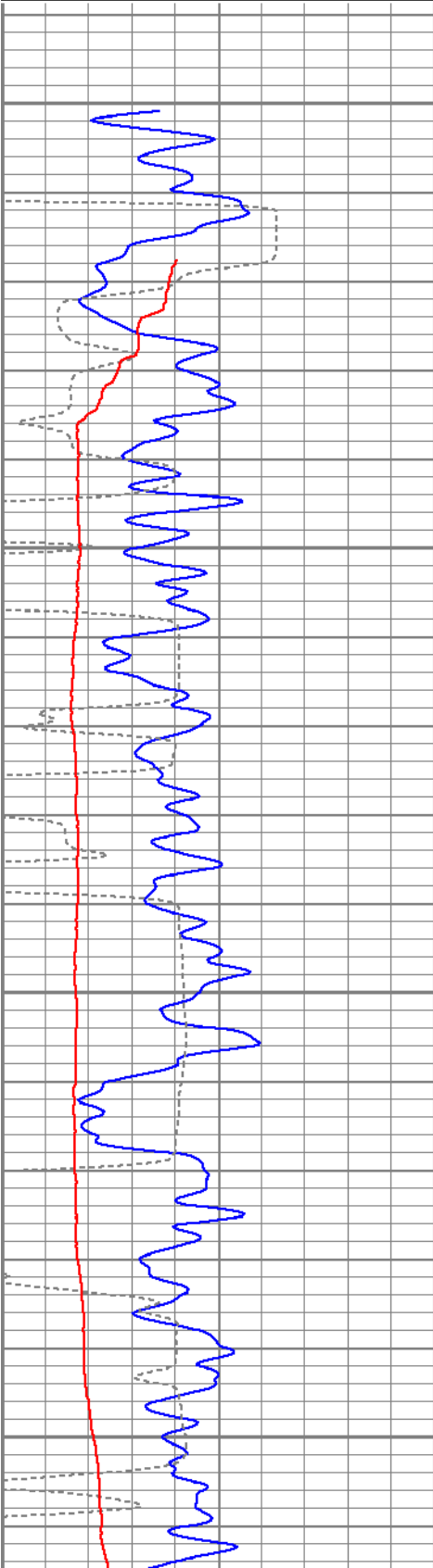


Database File: brahms1224122309b.db
Dataset Pathname: pass2
Presentation Format: cblpnr
Dataset Creation: Wed Dec 23 10:10:01 2009 by Log Std Casedhole 09061
Charted by: Depth in Feet scaled 1:240

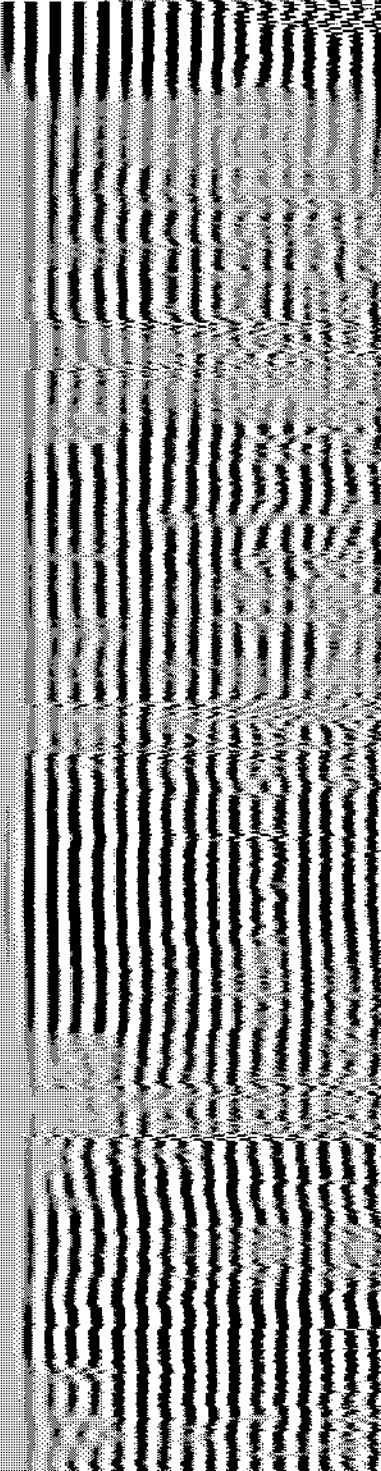
0	GR (GAPI) (GAPI)	200
400	TT3FT (usec)	200
0	DEVI (°)	10

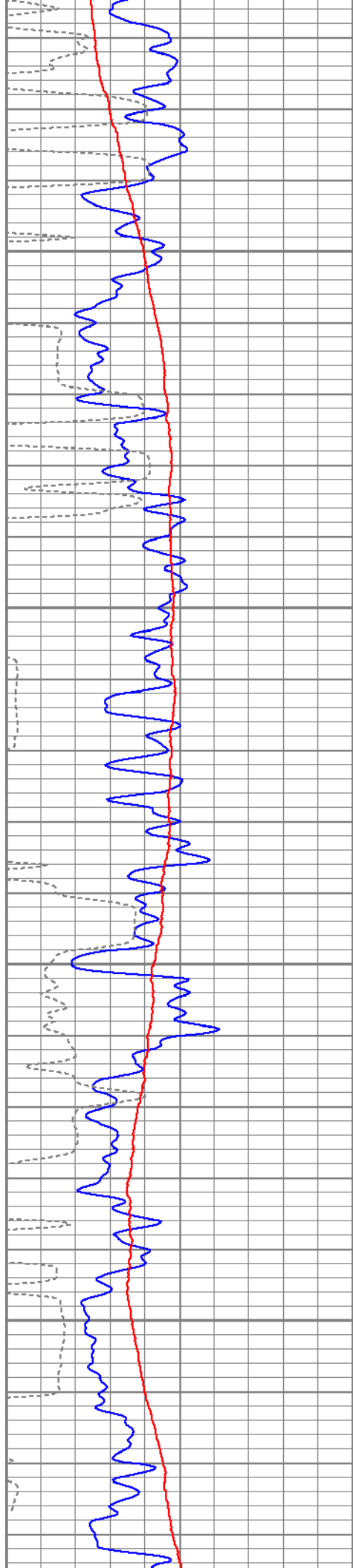
0	AMP3FT (mV)	100
18	CCL	-2
0	AMP5FT (mV)	100
200	WVF5FT	1200

200 variable density 1200



Fluid Level



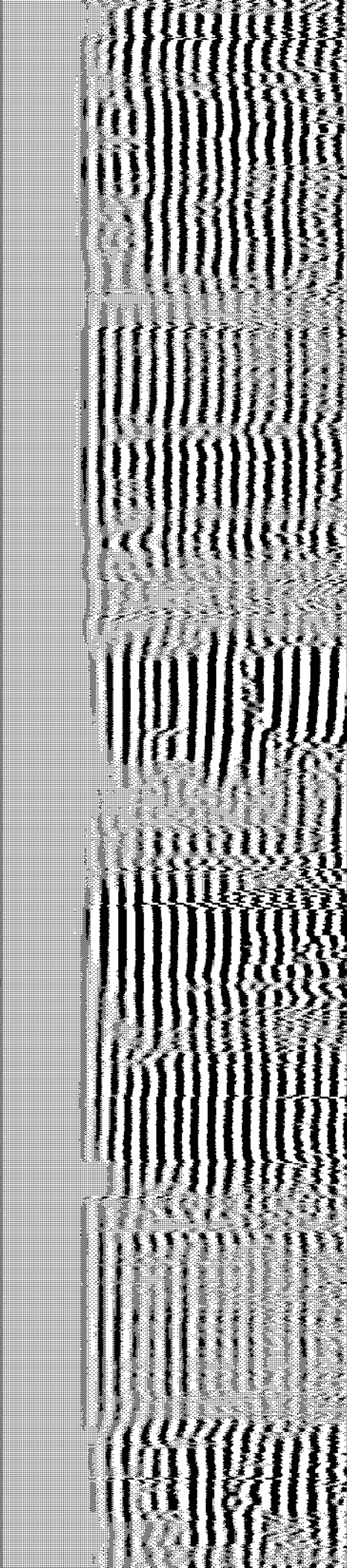
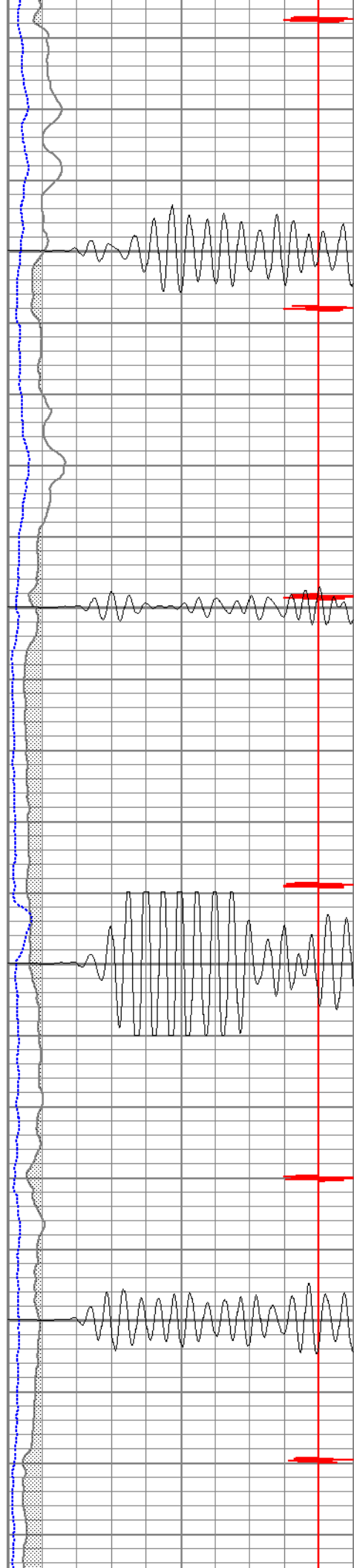


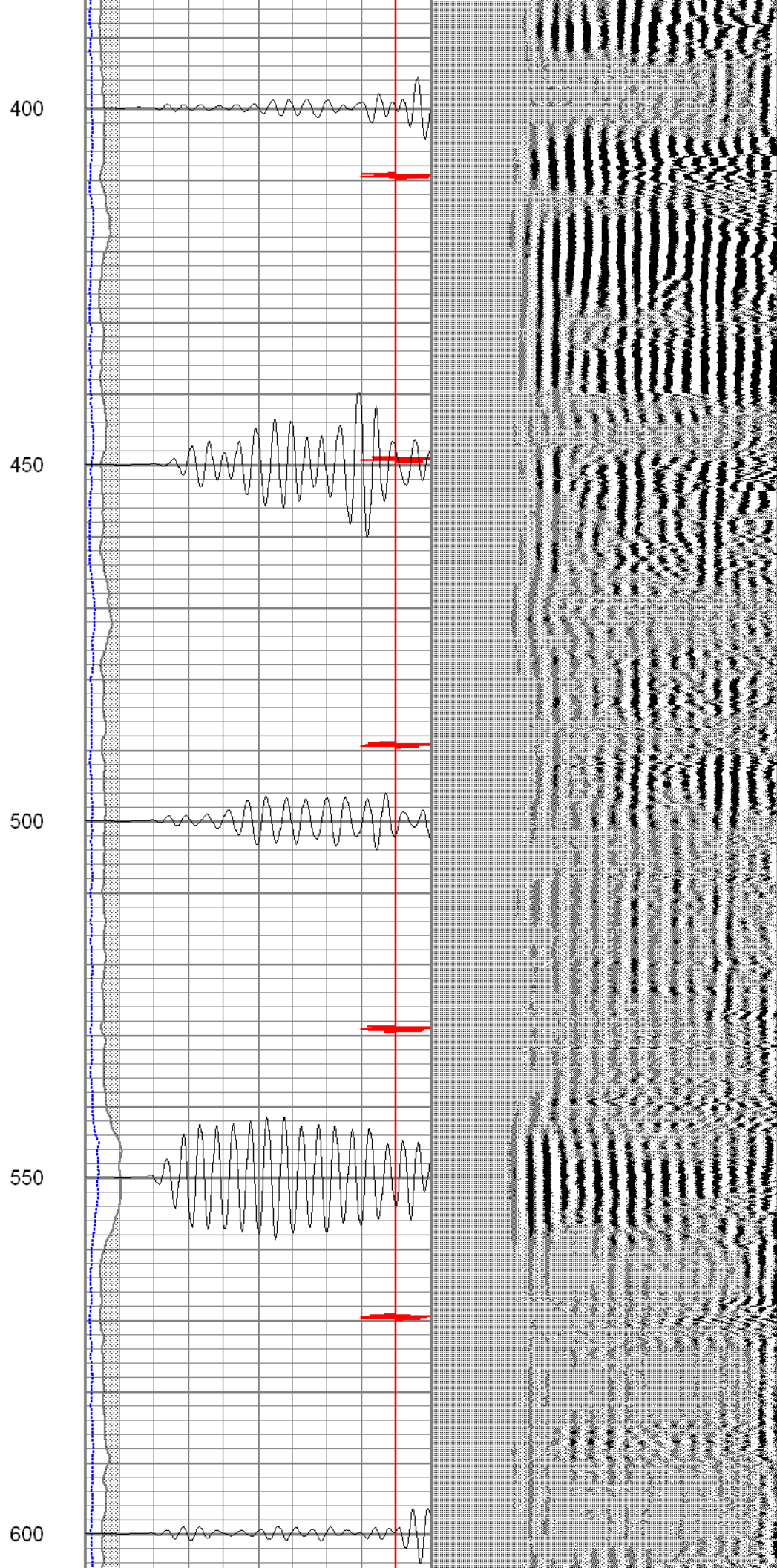
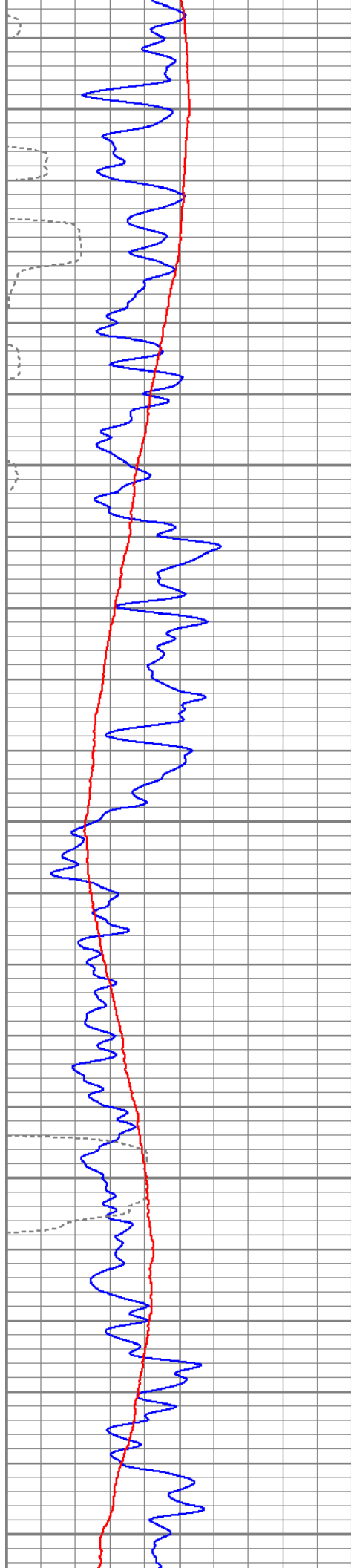
200

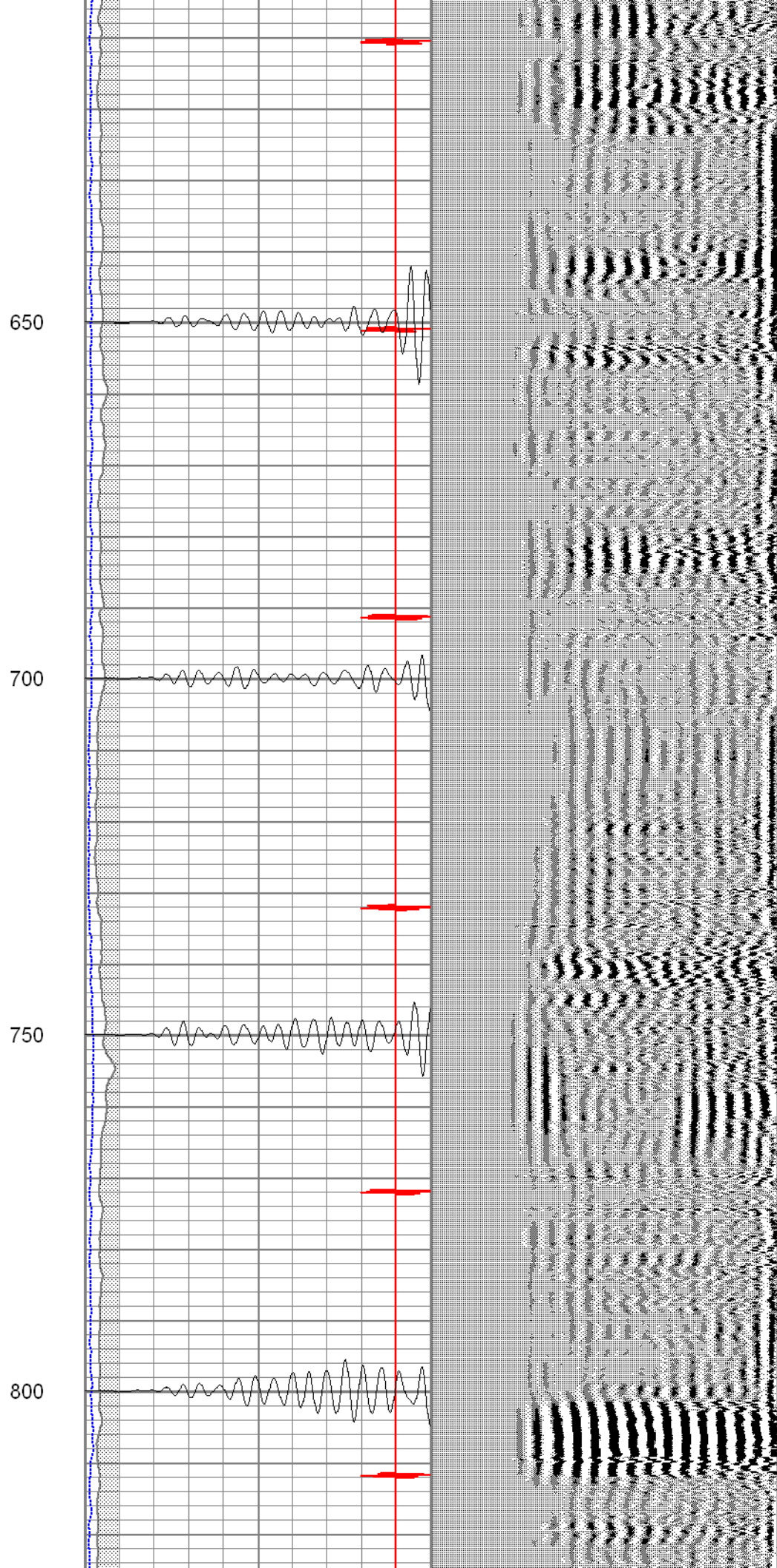
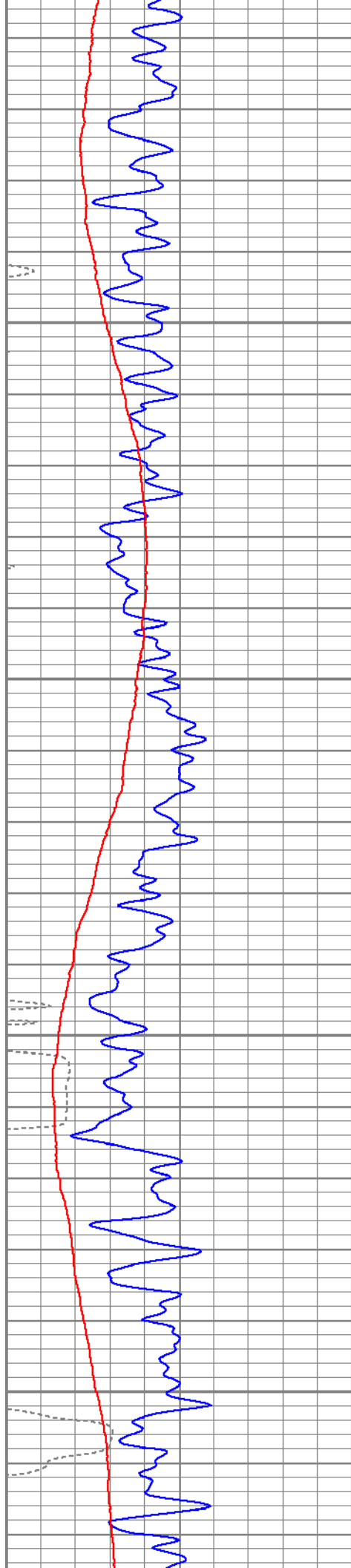
250

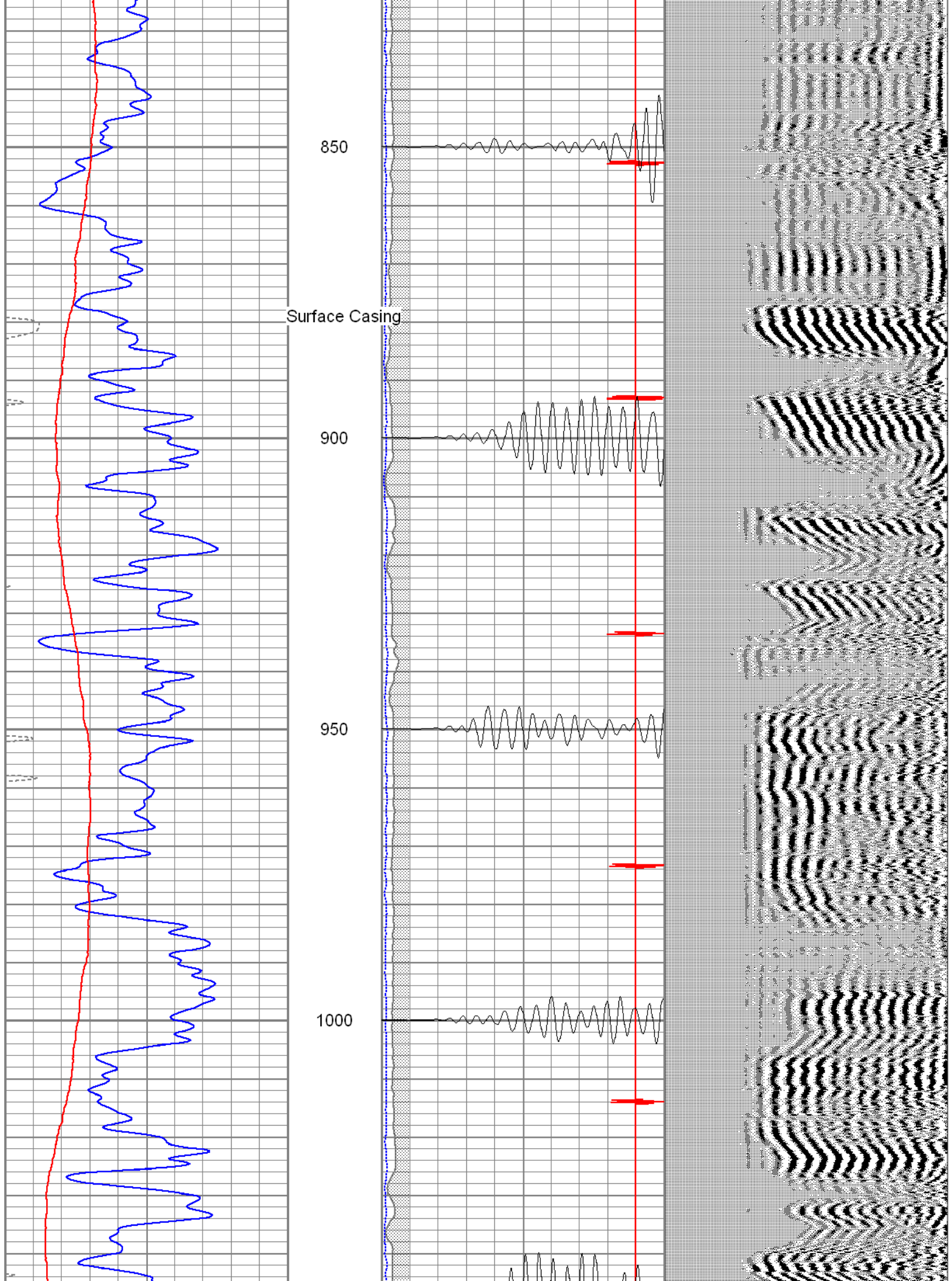
300

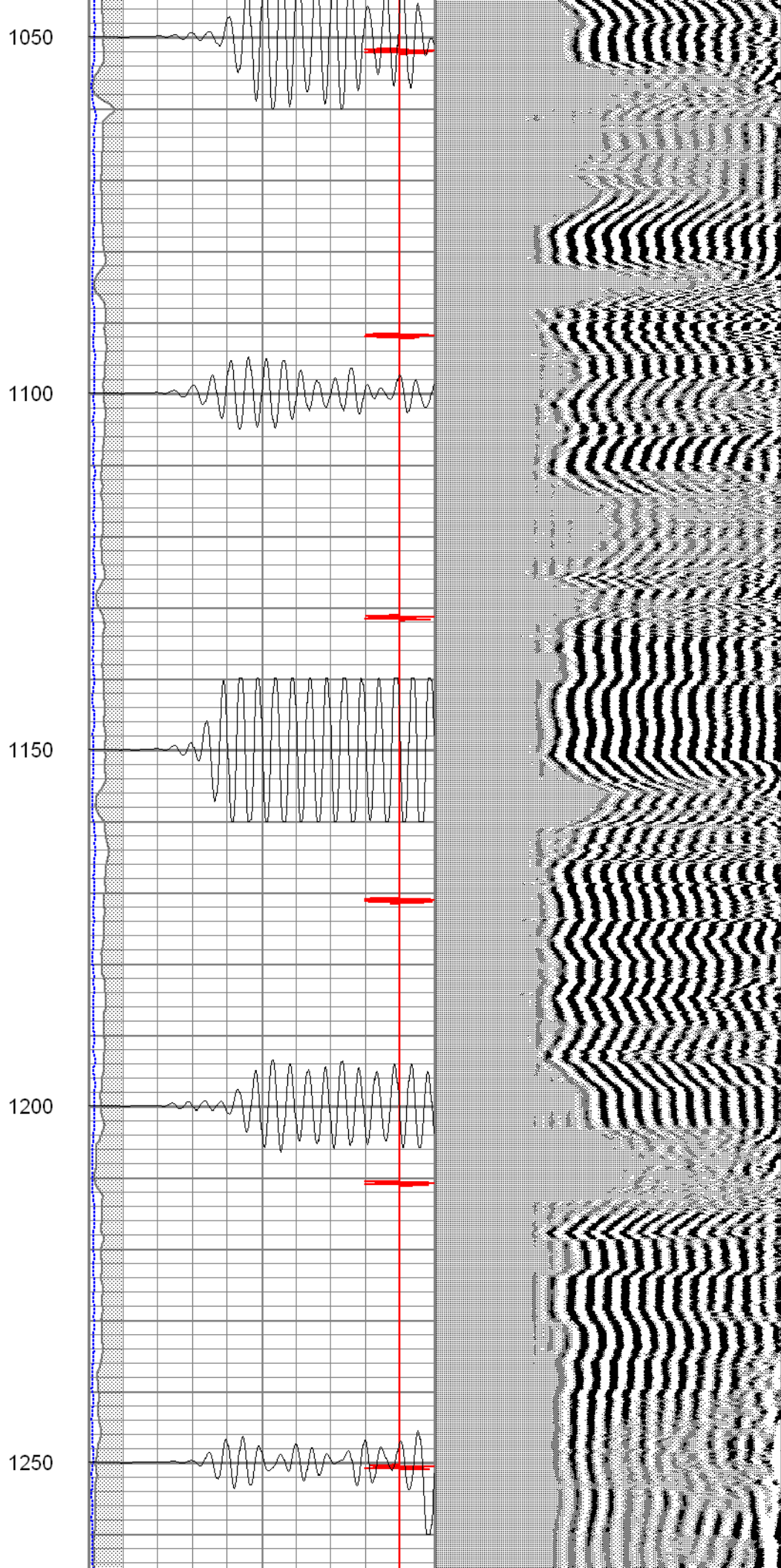
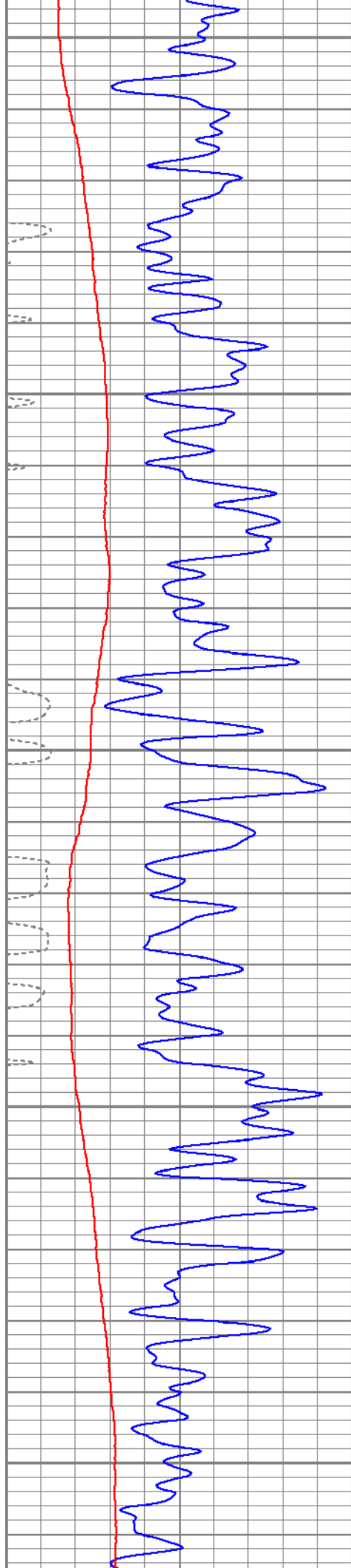
350

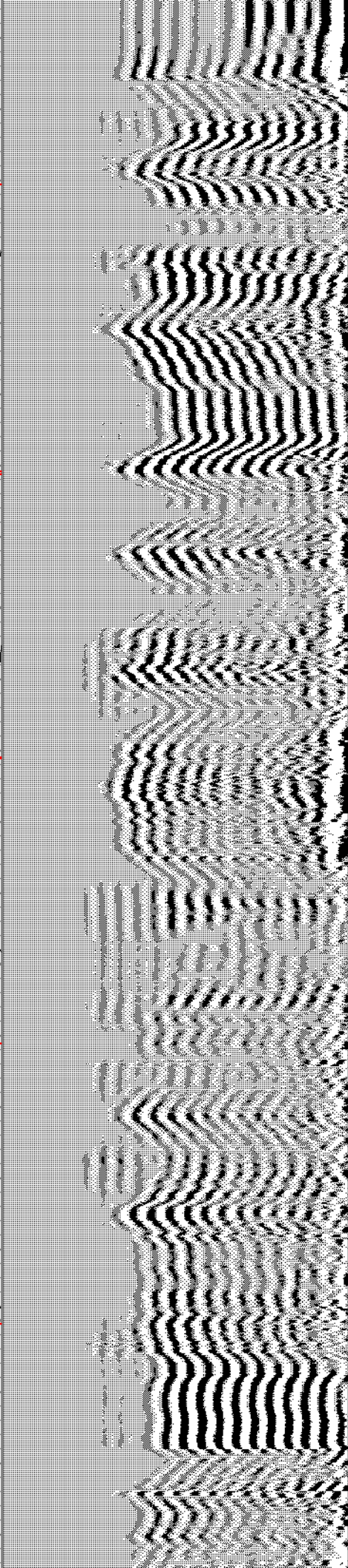
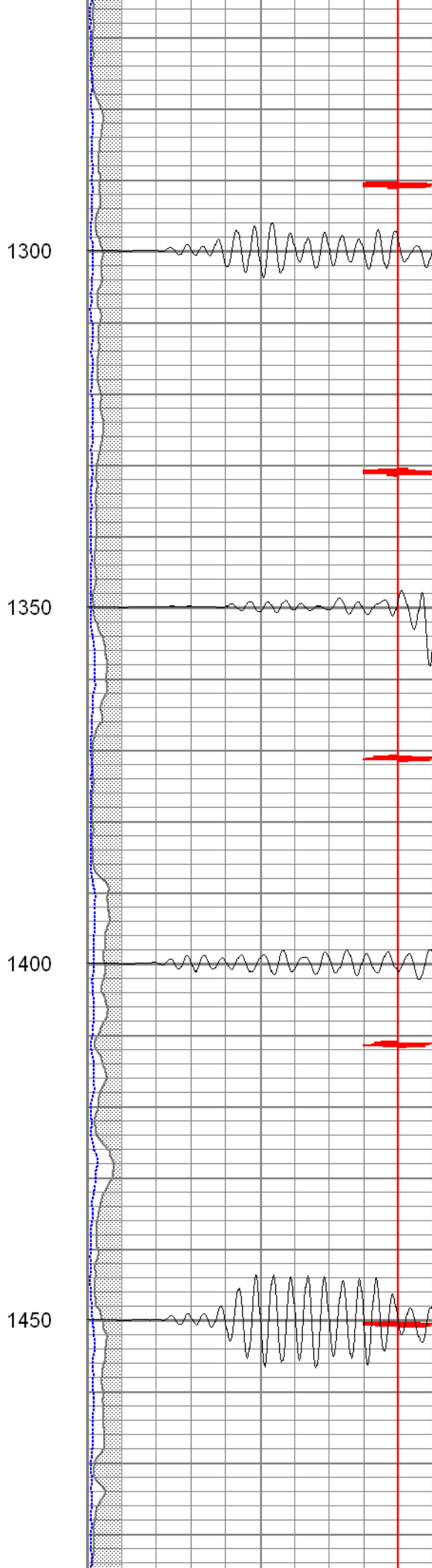
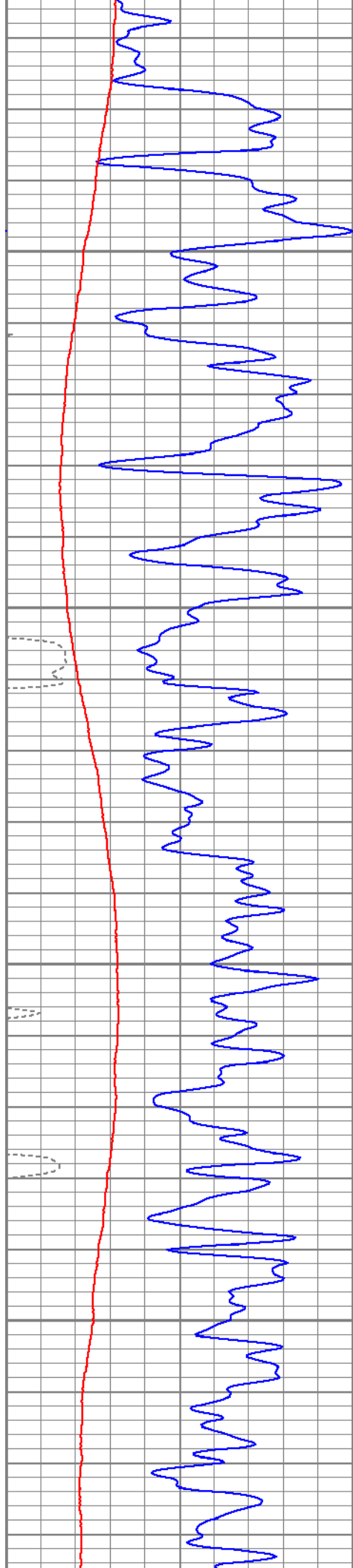


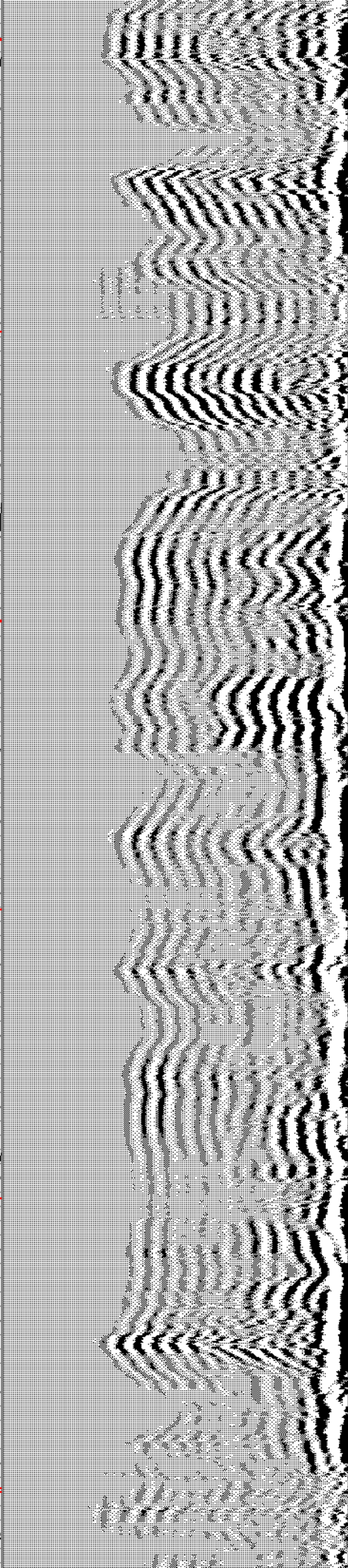
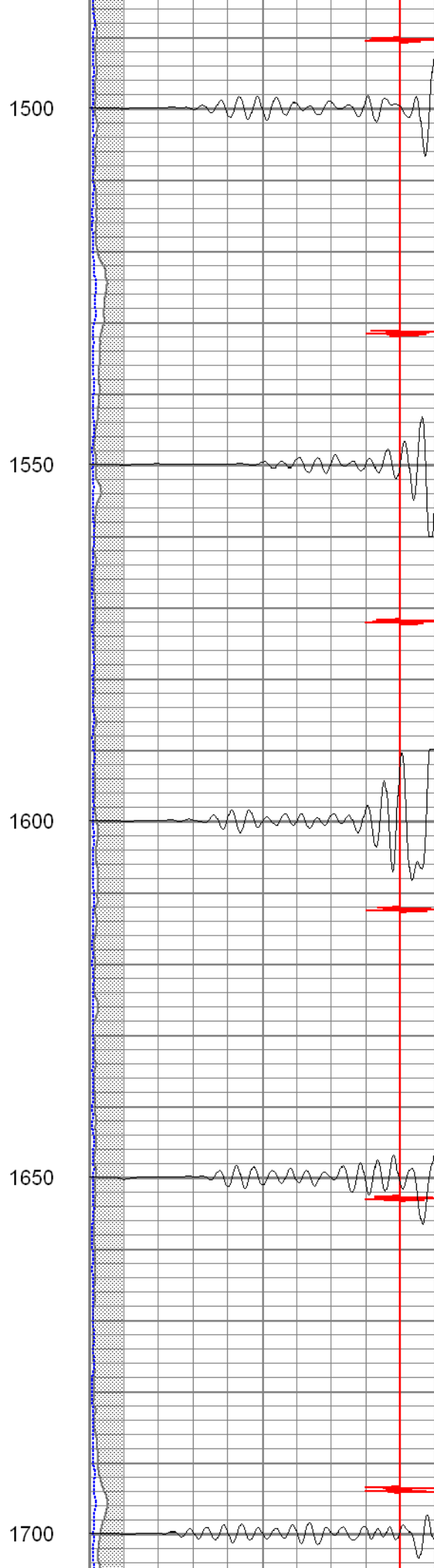
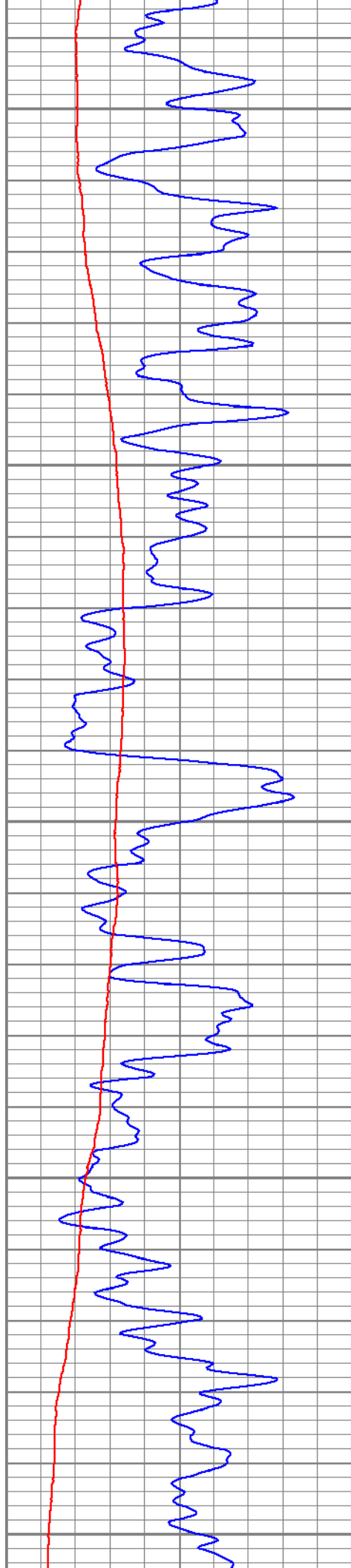


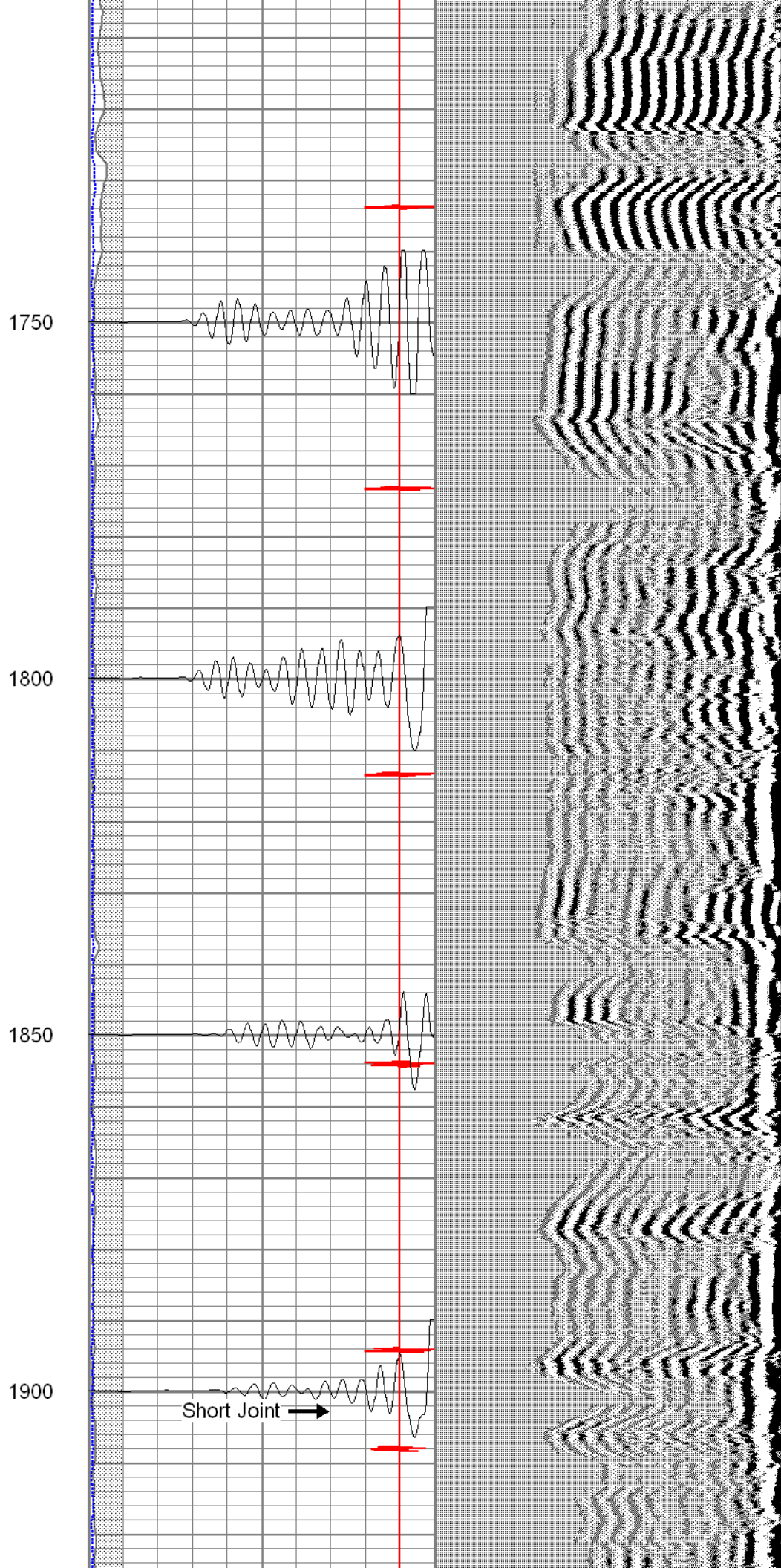
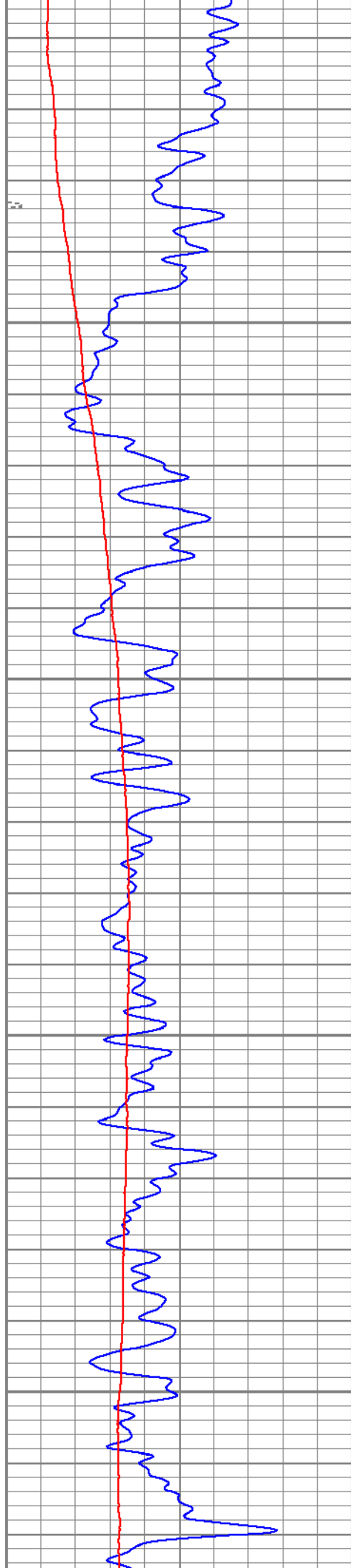


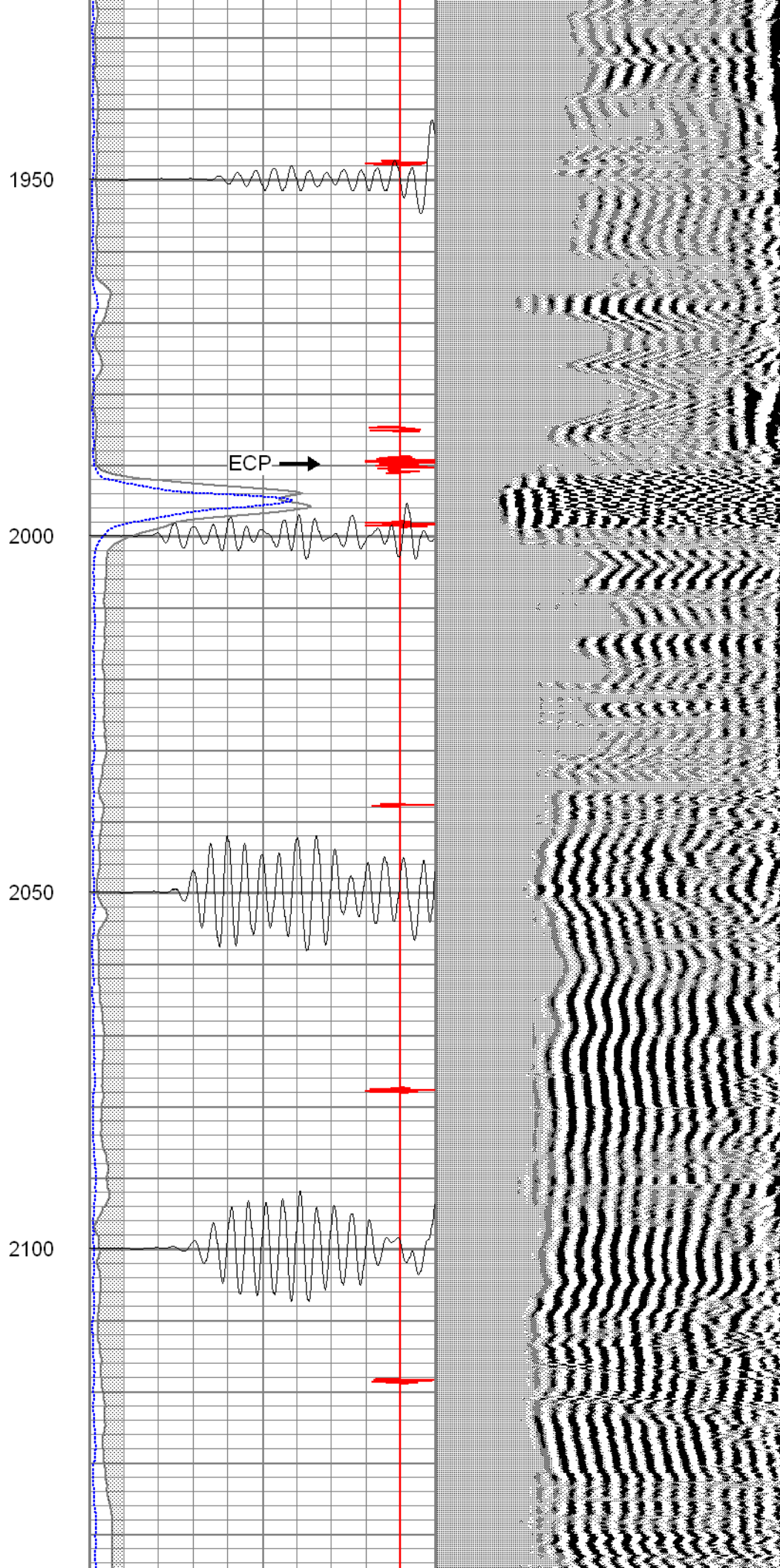
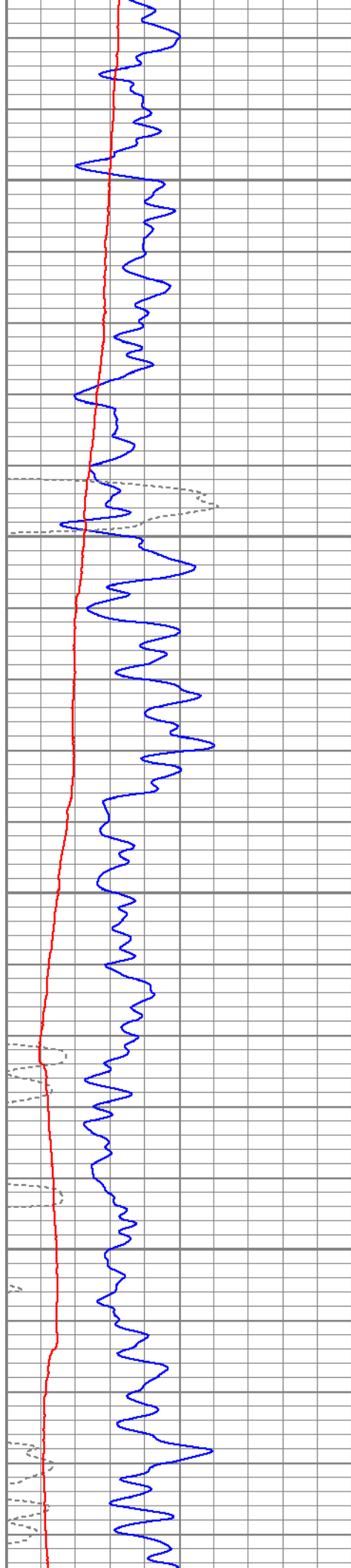


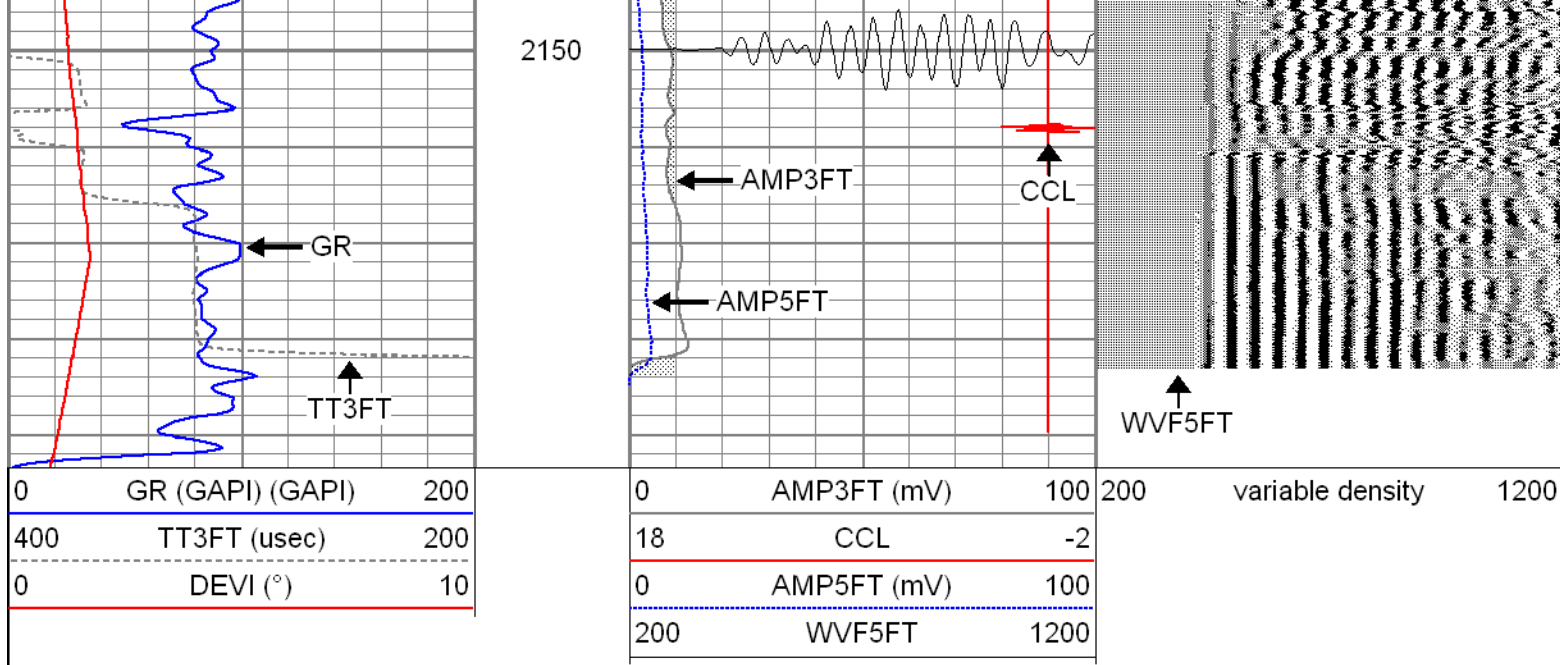








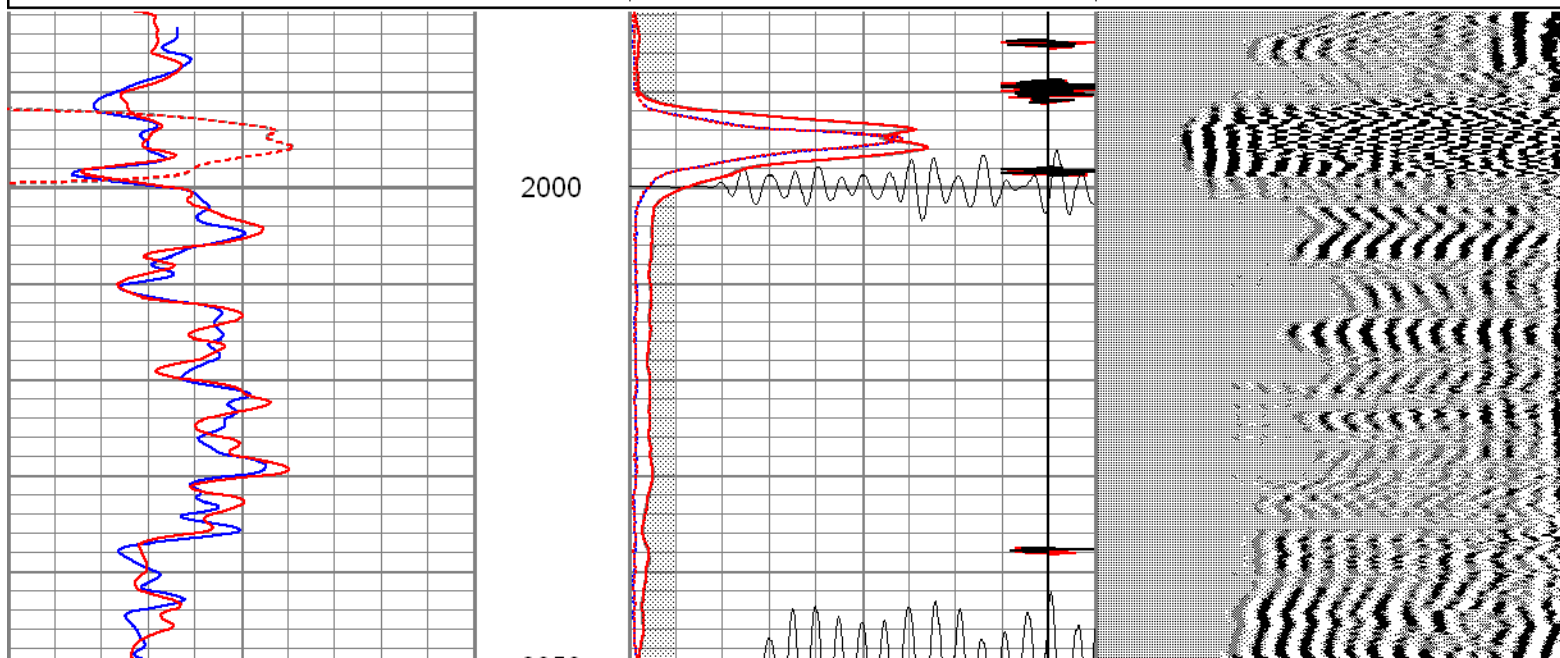
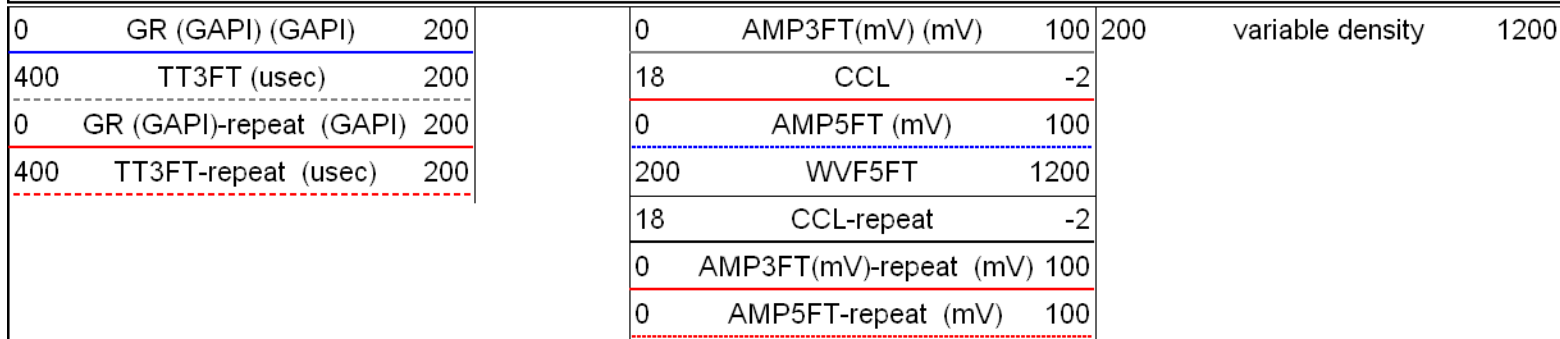


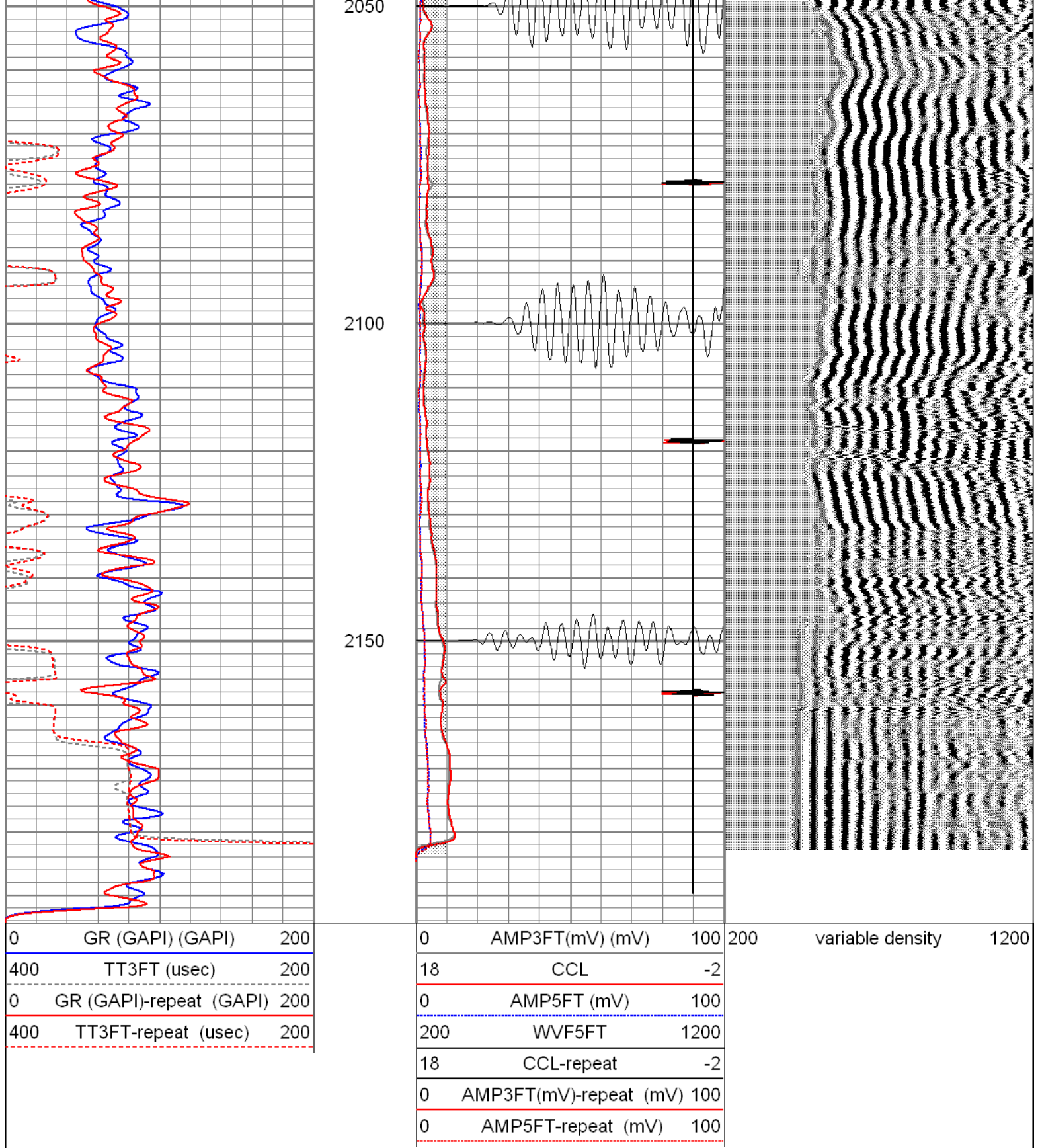


The Perforators
LLC

Repeat Pass

Database File: brahms1224122309b.db
 Dataset Pathname: pass1
 Presentation Format: cblpnr
 Dataset Creation: Wed Dec 23 10:03:11 2009 by Log Std Casedhole 09061
 Charted by: Depth in Feet scaled 1:240





Calibration Report

Database File: brahms1224122309b.db
Dataset Pathname: pass1
Dataset Creation: Wed Dec 23 10:03:11 2009 by Log Std Casedhole 09061

Gamma Ray Calibration Report

Serial Number: 275D_with_INC
Tool Model: 275D_INC
Performed: Tue Dec 22 15:42:44 2009

Performed: Tue Dec 22 15:42:44 2009

Calibrator Value:	200.0	GAPI
Background Reading:	0.0	cps
Calibrator Reading:	200.0	cps
Sensitivity:	0.9950	GAPI/cps

Inclinometer Calibration Report

Performed:	Fri Dec 11 13:10:24 2009				
	Low Read.	High Read.	Low Ref.	High Ref.	
X Accelerometer	-3583.20	3593.60	-1.00	1.00	gee
Y Accelerometer	-3666.60	3525.20	-1.00	1.00	gee
Z Accelerometer					

Segmented Cement Bond Log Calibration Report

Serial Number:	80553
Tool Model:	Radii
Calibration Casing Diameter:	5.500 in
Calibration Depth:	3134.413 ft

Master Calibration, performed Wed Dec 16 15:31:02 2009:

	Raw (v)		Calibrated (mv)		Results	
	Zero	Cal	Zero	Cal	Gain	Offset
3'	0.021	1.743	1.000	71.921	41.176	0.152
CAL	0.020	1.534				
5'	0.020	1.731	1.000	71.921	41.472	0.152
SUM						
S1	0.021	1.583	0.800	71.921	45.514	-0.146
S2	0.021	1.699	0.800	71.921	42.371	-0.083
S3	0.021	1.846	0.800	71.921	38.967	-0.012
S4	0.021	1.883	0.800	71.921	38.201	0.004
S5	0.021	1.833	0.800	71.921	39.237	-0.018
S6	0.021	1.773	0.800	71.921	40.596	-0.049
S7	0.021	1.670	0.800	71.921	43.128	-0.098
S8	0.021	1.554	0.800	71.921	46.375	-0.160

Calibration Report

Database File:	brahms1224122309b.db
Dataset Pathname:	pass1
Dataset Creation:	Wed Dec 23 10:03:11 2009 by Log Std Casedhole 09061

Gamma Ray Calibration Report

Serial Number:	275D_with_INC
Tool Model:	275D_INC
Performed:	Tue Dec 22 15:42:44 2009
Calibrator Value:	200.0 GAPI

Background Reading:	0.0	cps
Calibrator Reading:	200.0	cps
Sensitivity:	0.9950	GAPI/cps

Inclinometer Calibration Report

Performed:	Fri Dec 11 13:10:24 2009				
	Low Read.	High Read.	Low Ref.	High Ref.	
X Accelerometer	-3583.20	3593.60	-1.00	1.00	gee
Y Accelerometer	-3666.60	3525.20	-1.00	1.00	gee
Z Accelerometer					

Segmented Cement Bond Log Calibration Report

Serial Number:	80553
Tool Model:	Radii
Calibration Casing Diameter:	5.500 in
Calibration Depth:	3134.413 ft

Master Calibration, performed Wed Dec 16 15:31:02 2009:

	Raw (v)		Calibrated (mv)		Results	
	Zero	Cal	Zero	Cal	Gain	Offset
3'	0.021	1.743	1.000	71.921	41.176	0.152
CAL	0.020	1.534				
5'	0.020	1.731	1.000	71.921	41.472	0.152
SUM						
S1	0.021	1.583	0.800	71.921	45.514	-0.146
S2	0.021	1.699	0.800	71.921	42.371	-0.083
S3	0.021	1.846	0.800	71.921	38.967	-0.012
S4	0.021	1.883	0.800	71.921	38.201	0.004
S5	0.021	1.833	0.800	71.921	39.237	-0.018
S6	0.021	1.773	0.800	71.921	40.596	-0.049
S7	0.021	1.670	0.800	71.921	43.128	-0.098
S8	0.021	1.554	0.800	71.921	46.375	-0.160