



SINGLE INDUCTION LOG

Company	Pioneer Natural Resources	Company	Pioneer Natural Resources
Well	Islander 33-13	Well	Islander 33-13
Field	Purgatorie River	Field	Purgatorie River
County	Las Animas	County	Las Animas
State	CO	State	CO
Location:	API # : 05-071-09727-00 1601' FSL & 2324' FEL	Other Services	CDL
Permanent Datum	SEC 13 TWP 33S RGE 67W	Elevation	
Log Measured From	Ground Level	K.B. 7417'	
Drilling Measured From	Kelly Bushing 4' Above G.L.	D.F. -----	
	Kelly Bushing	G.L. 7413'	
Date	12/21/09		
Run Number	one		
Depth Driller	2310'		
Depth Logger	2308'		
Bottom Logged Interval	2306'		
Top Log Interval	380'		
Casing Driller	399'		
Casing Logger	400'		
Bit Size	7 7/8"		
Type Fluid in Hole	water		
Density / Viscosity	///		
pH / Fluid Loss	///		
Source of Sample	///		
Rm @ Meas. Temp	///		
Rmf @ Meas. Temp	///		
Rmc @ Meas. Temp	///		
Source of Rmf / Rmc	///		
Rm @ BHT	///		
Time Circulation Stopped	8:30 p.m.		
Time Logger on Bottom	1:35 a.m.		
Maximum Recorded Temperature	///		
Equipment Number	697		
Location	Trinidad		
Recorded By	Worley		
Witnessed By	Mr. Berry		

<<< Fold Here >>>

All interpretations are opinions based on inferences from electrical or other measurements and we cannot and do not guarantee the accuracy or correctness of any interpretation, and we shall not, except in the case of gross or willful negligence on our part, be liable or responsible for any loss, costs, damages, or expenses incurred or sustained by anyone resulting from any interpretation made by any of our officers, agents or employees. These interpretations are also subject to our general terms and conditions set out in our current Price Schedule.

Comments

Sarcillo to Duck Pond, go left, at signs that say Rancho Lagrita and Smyth Trek go left, stay on Smyth Trek to Deer Valley Rd, go right, at Log Cabin Dr, go right, on Fawn Rd go right, stay on main road to Stop sign, go left to location.

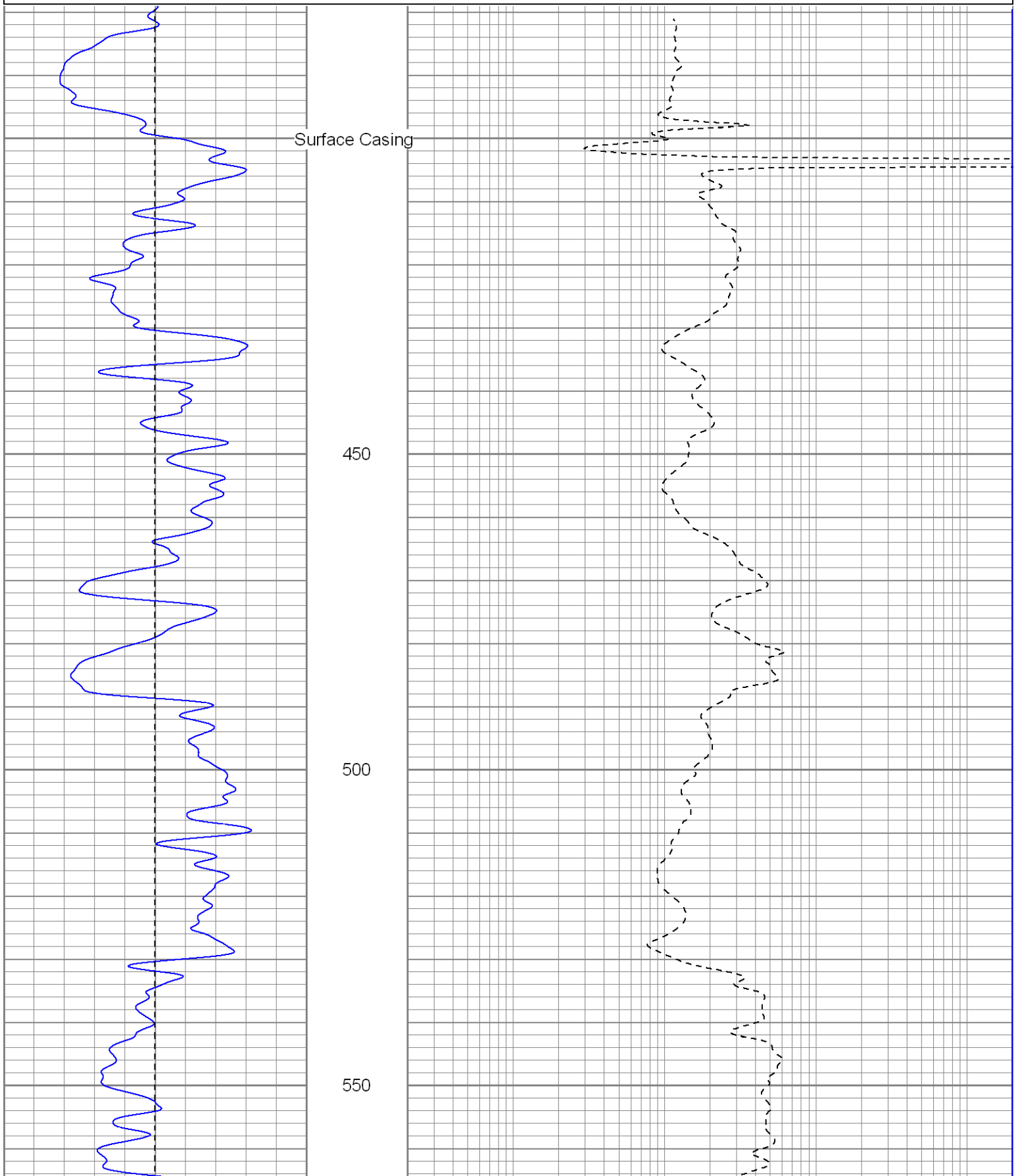


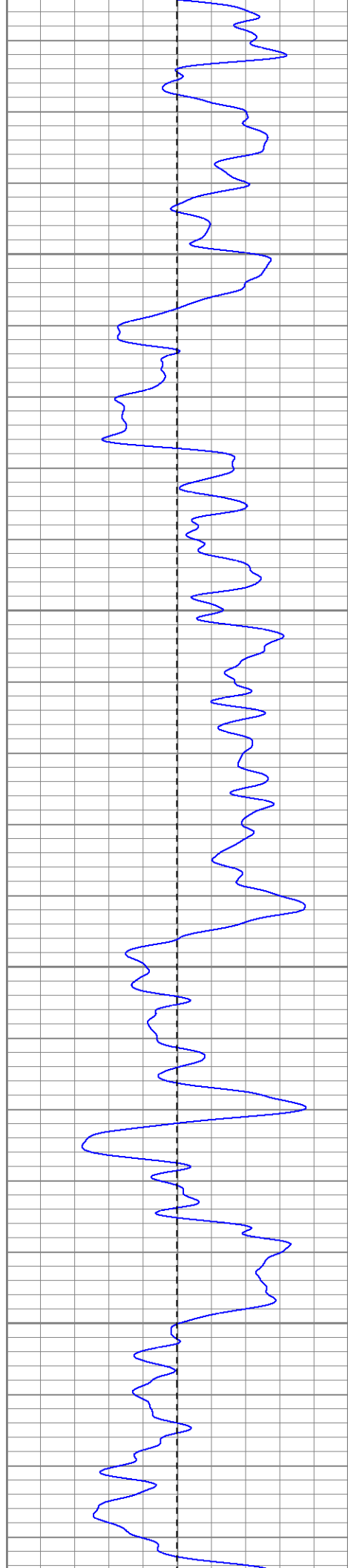
Main Pass

Database File: islanderdi.db
Dataset Pathname: pass3.1
Presentation Format: iel
Dataset Creation: Mon Dec 21 07:37:17 2009 by Calc Open-Cased 071220
Charted by: Depth in Feet scaled 1:240

0	GR (GAPI)	200
-100	SP (mV)	100

0.2	DIR (Ohm-m)	2000
0.2	SN (Ohm-m)	2000



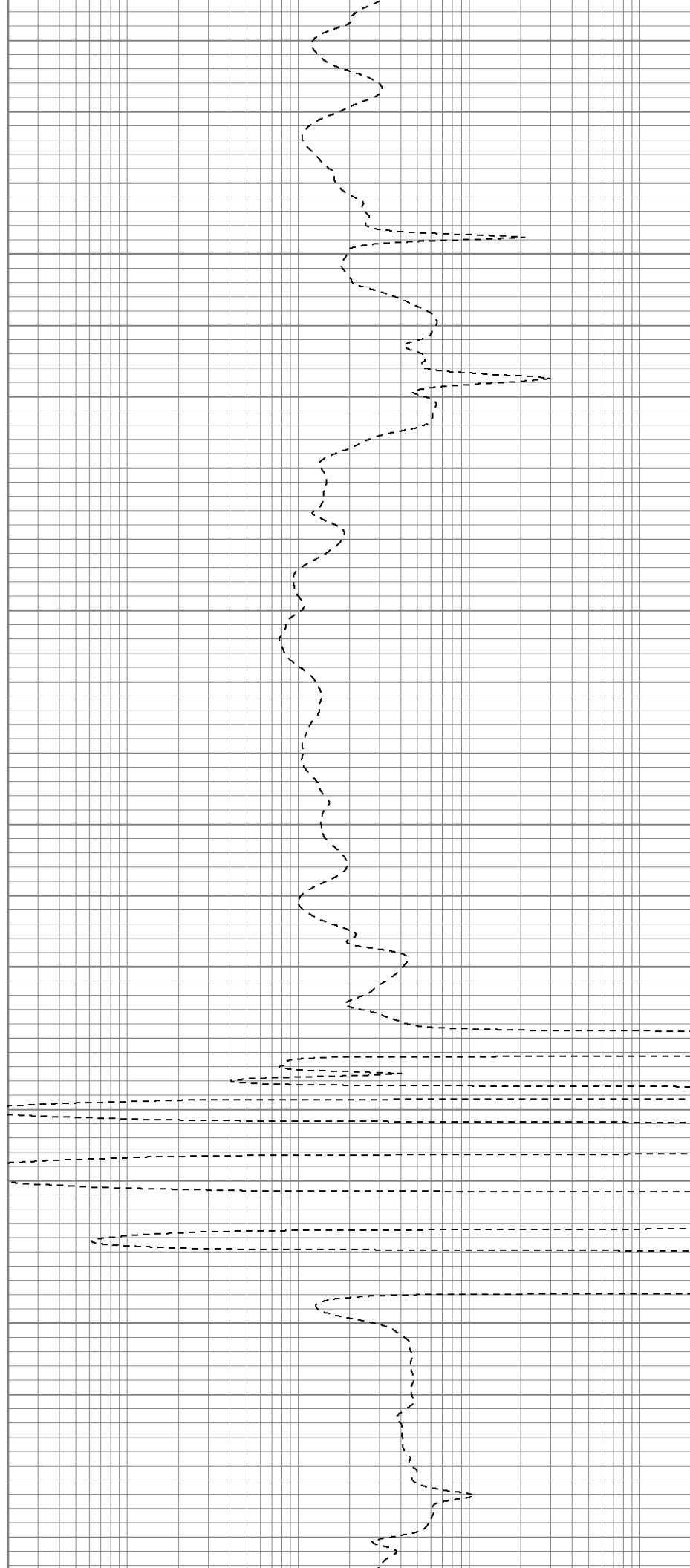


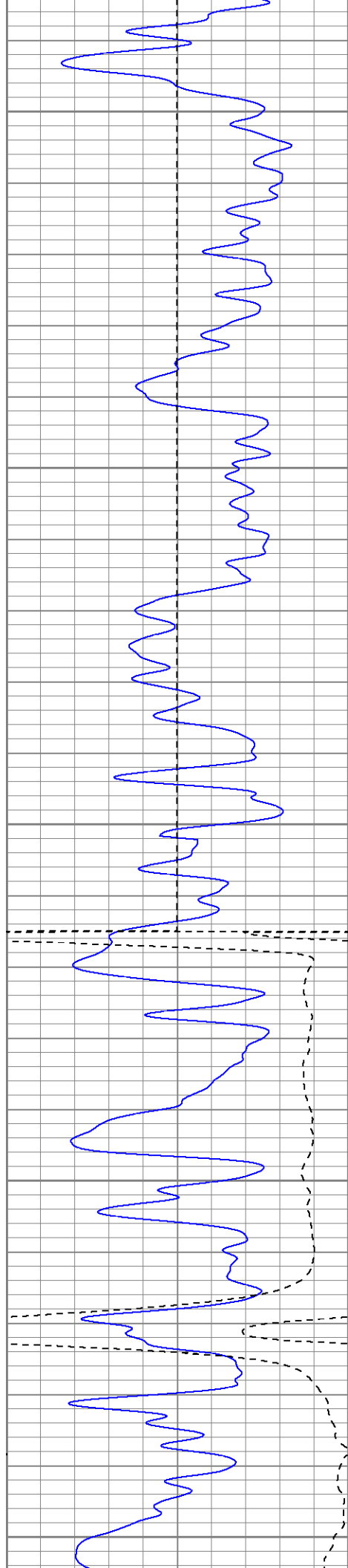
600

650

700

750





800

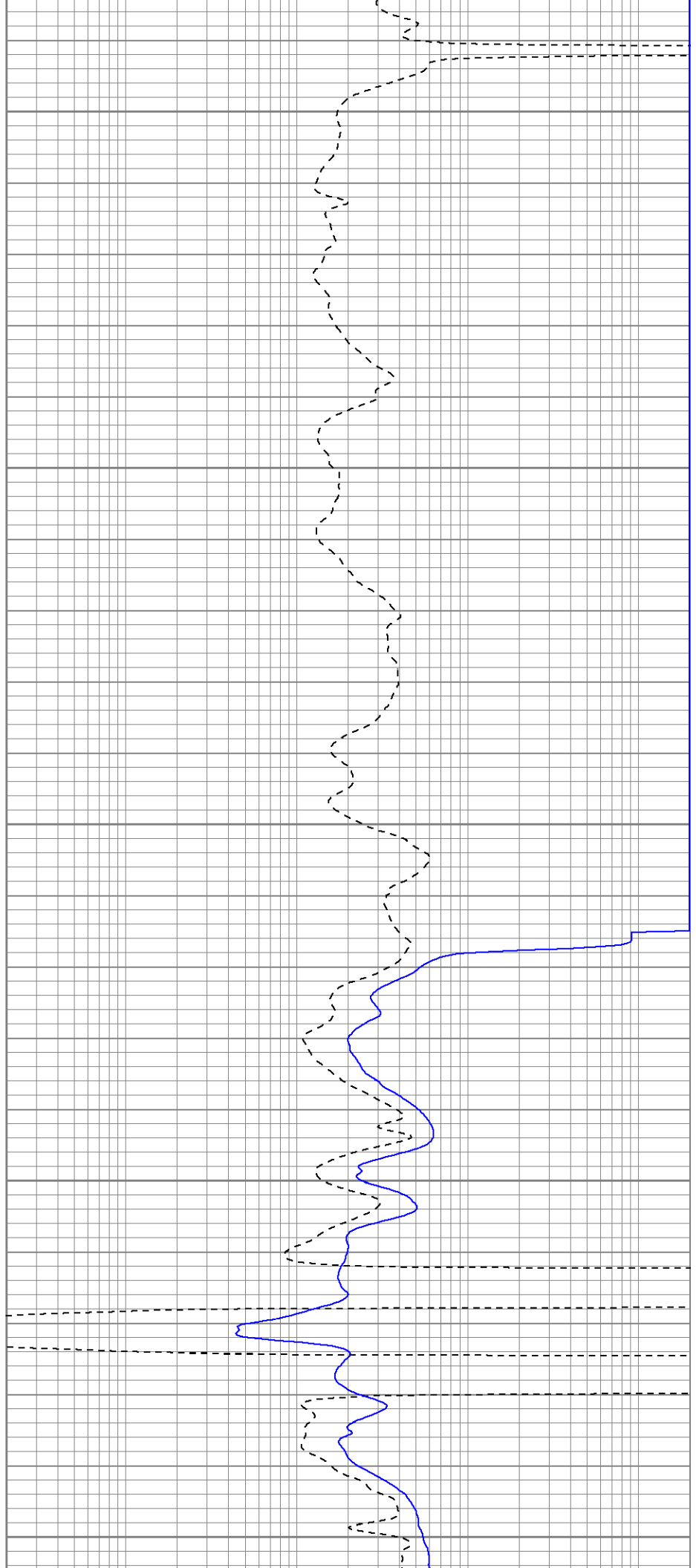
850

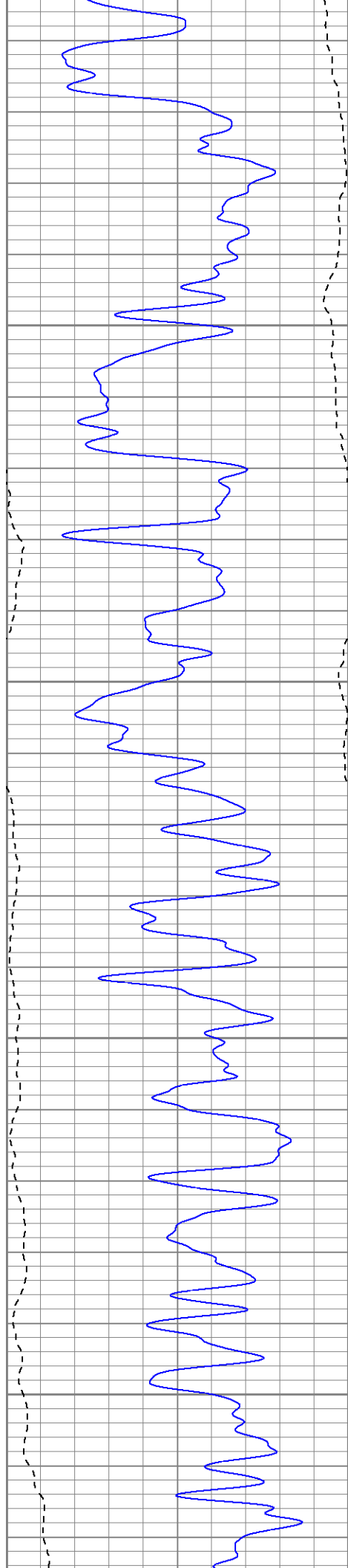
GR Shift

Fluid Level

950

1000



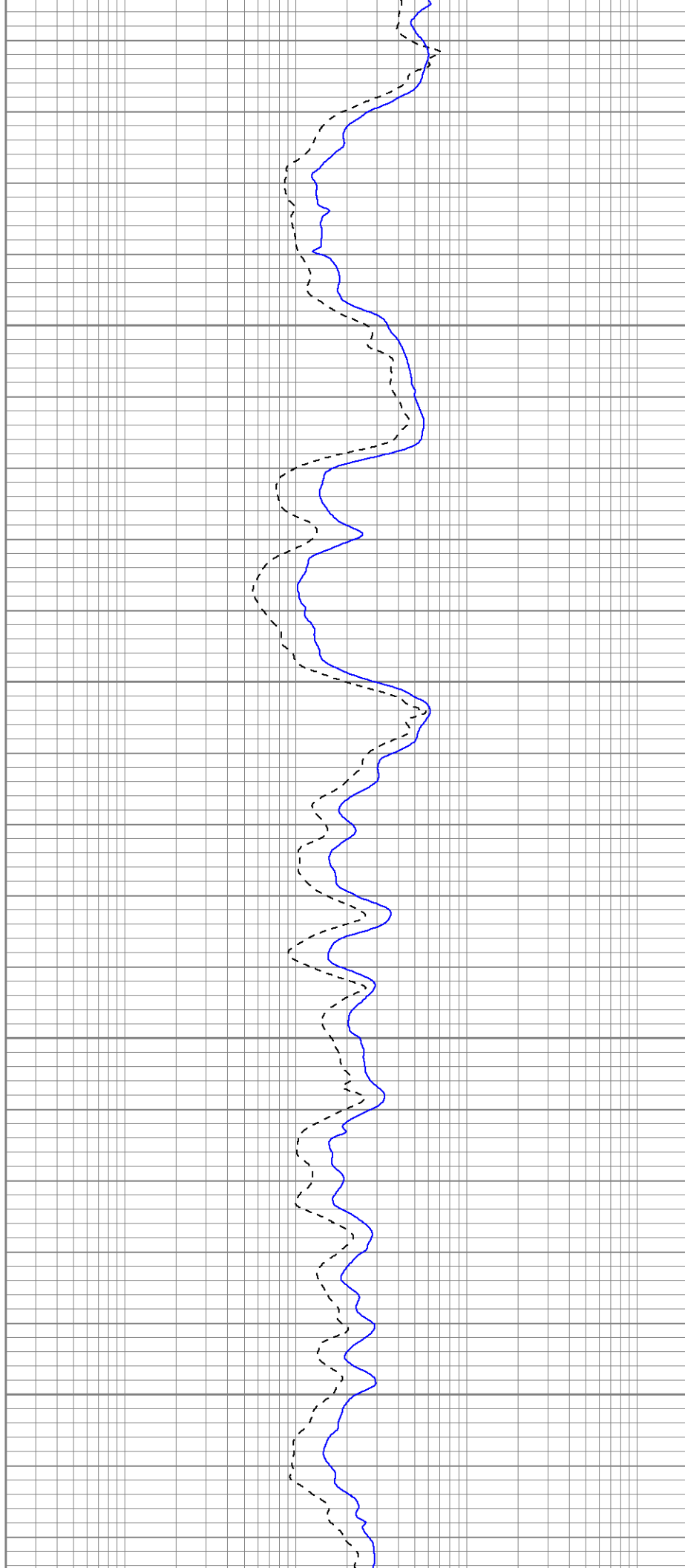


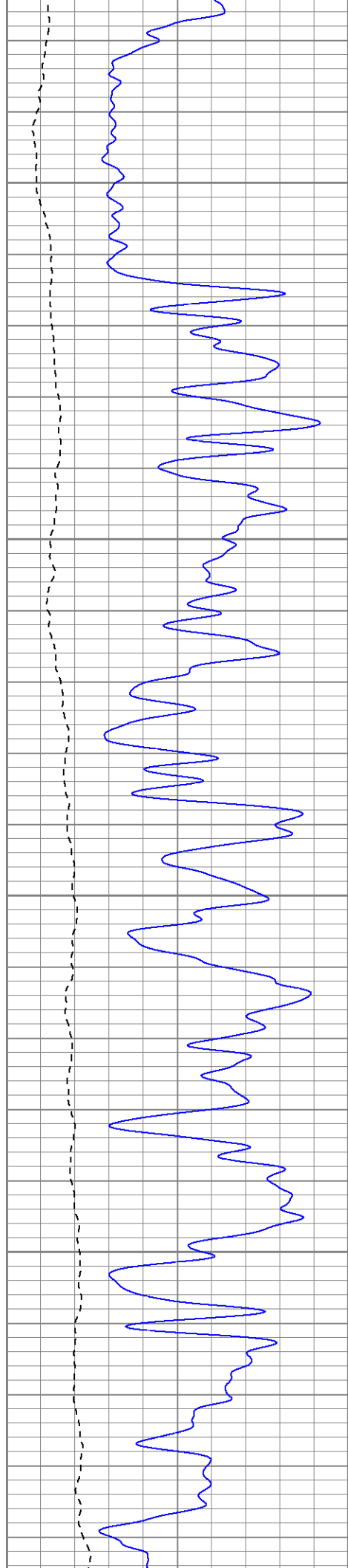
1050

1100

1150

1200



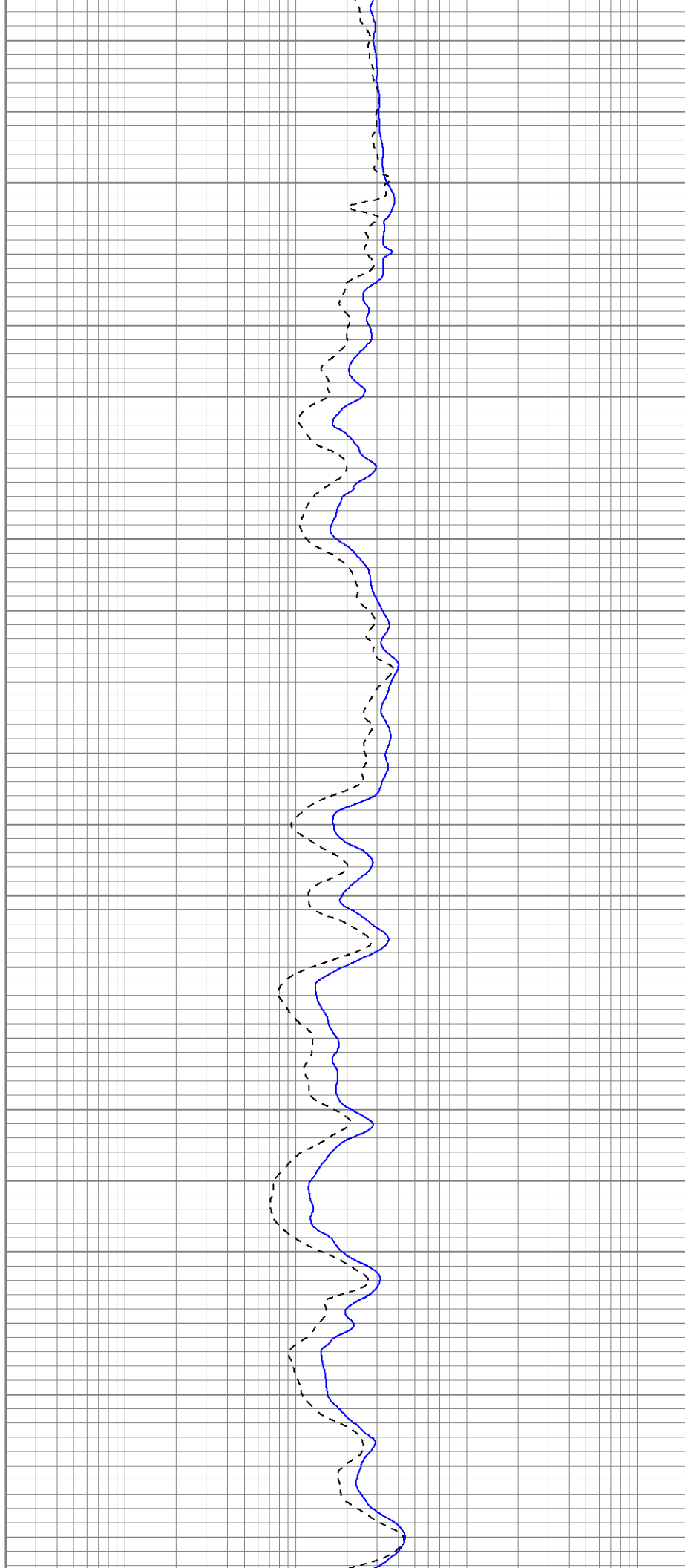


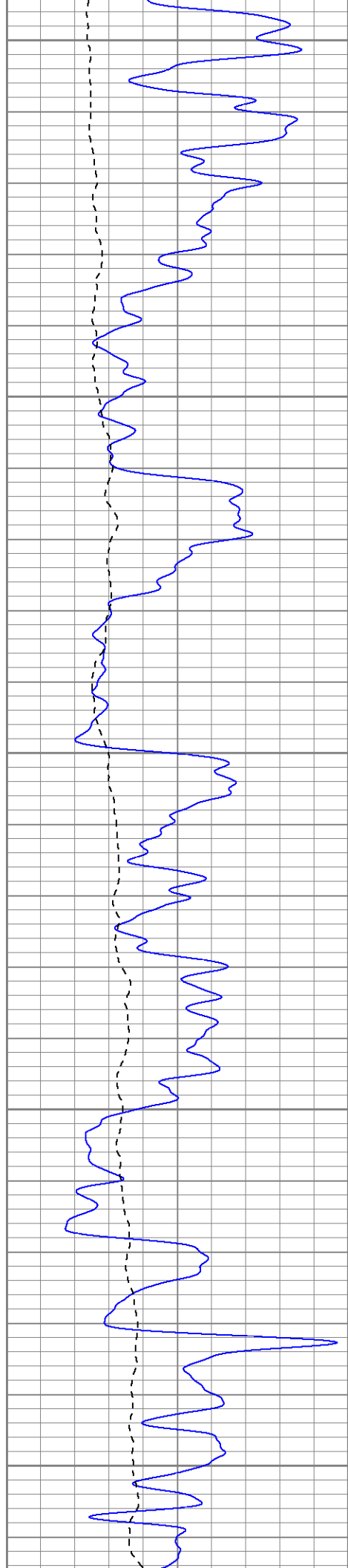
1250

1300

1350

1400





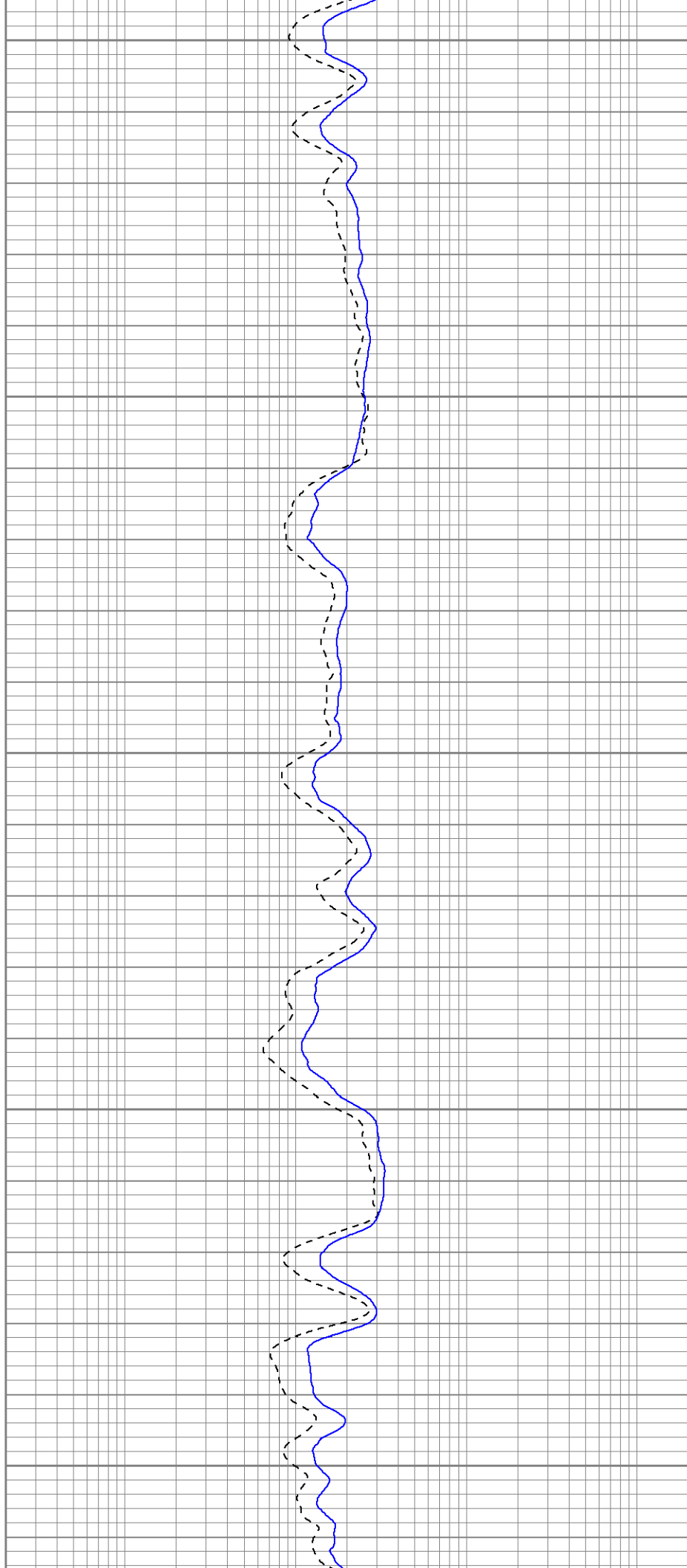
1450

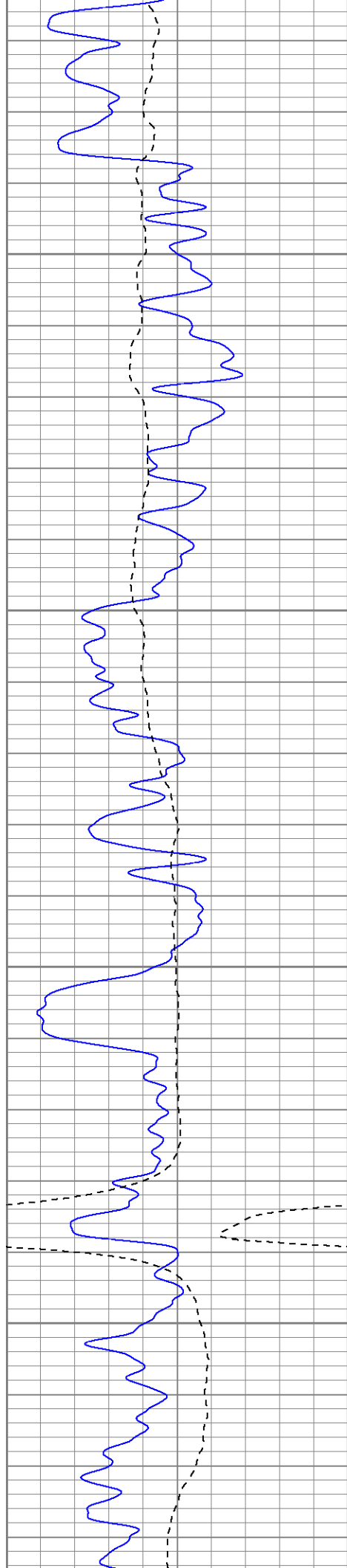
1500

1550

1600

1650



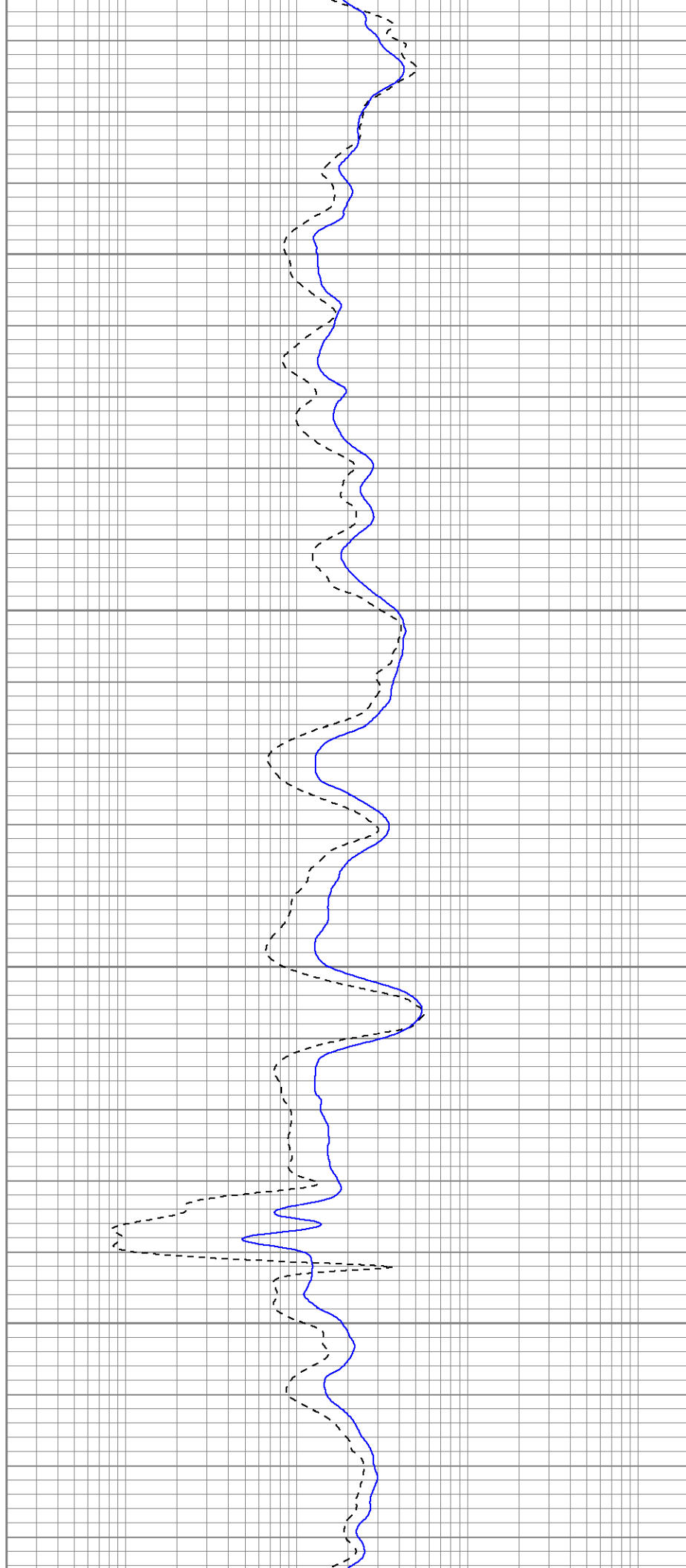


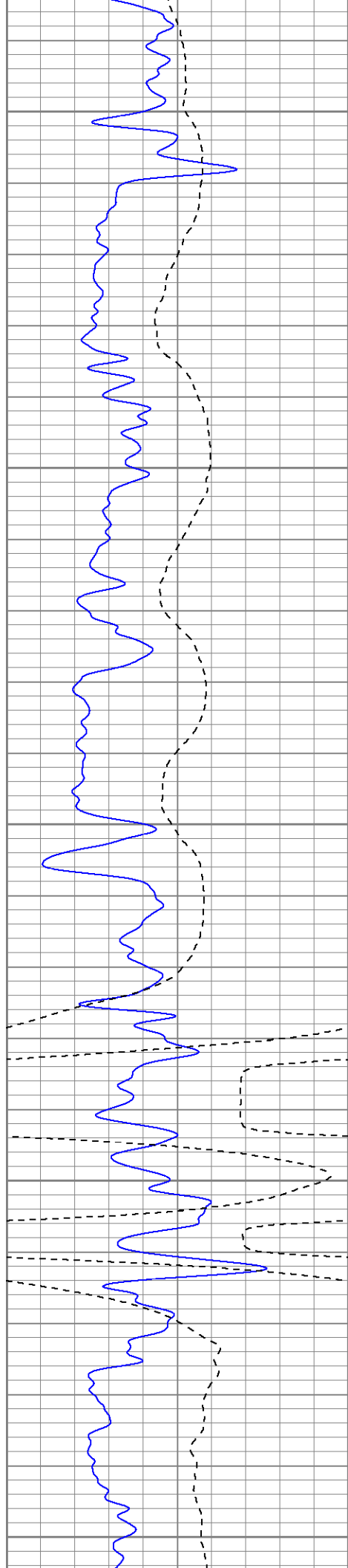
1700

1750

1800

1850





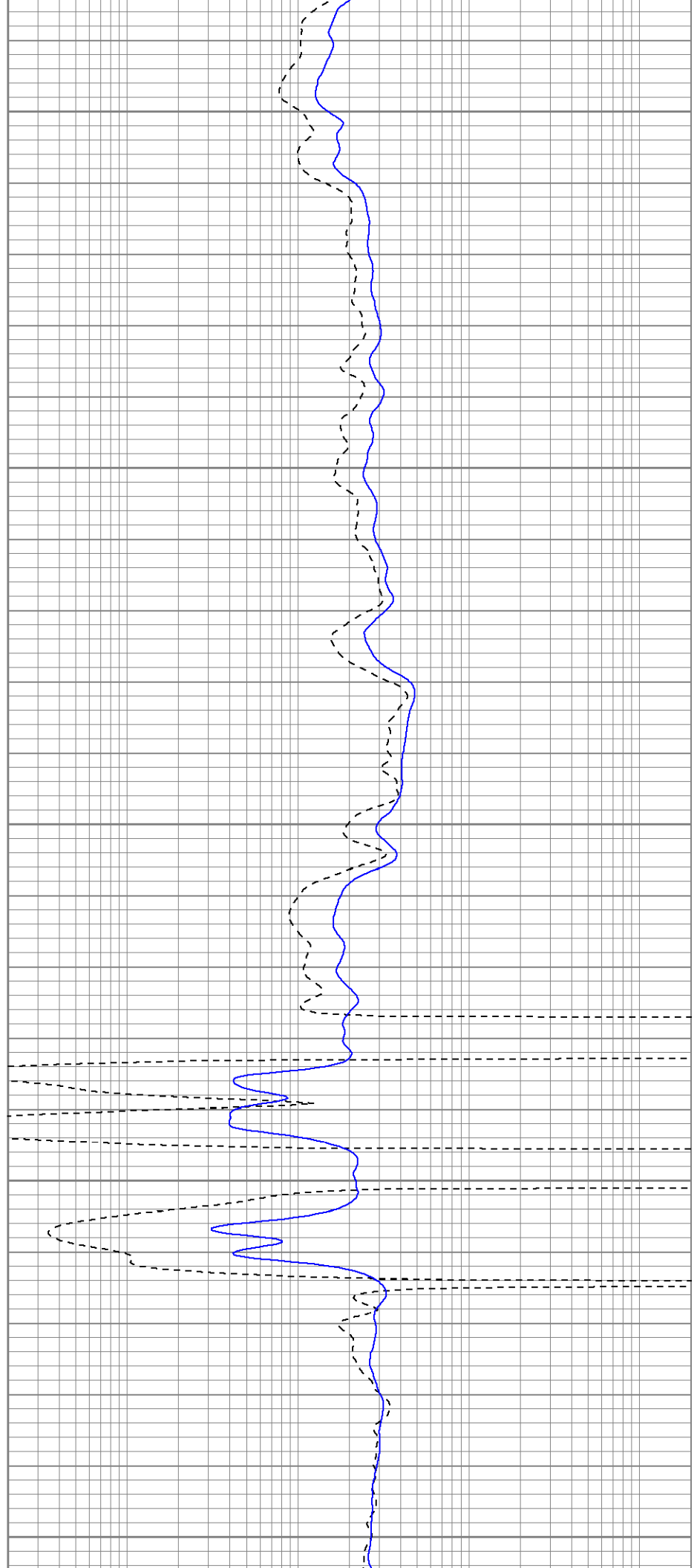
1900

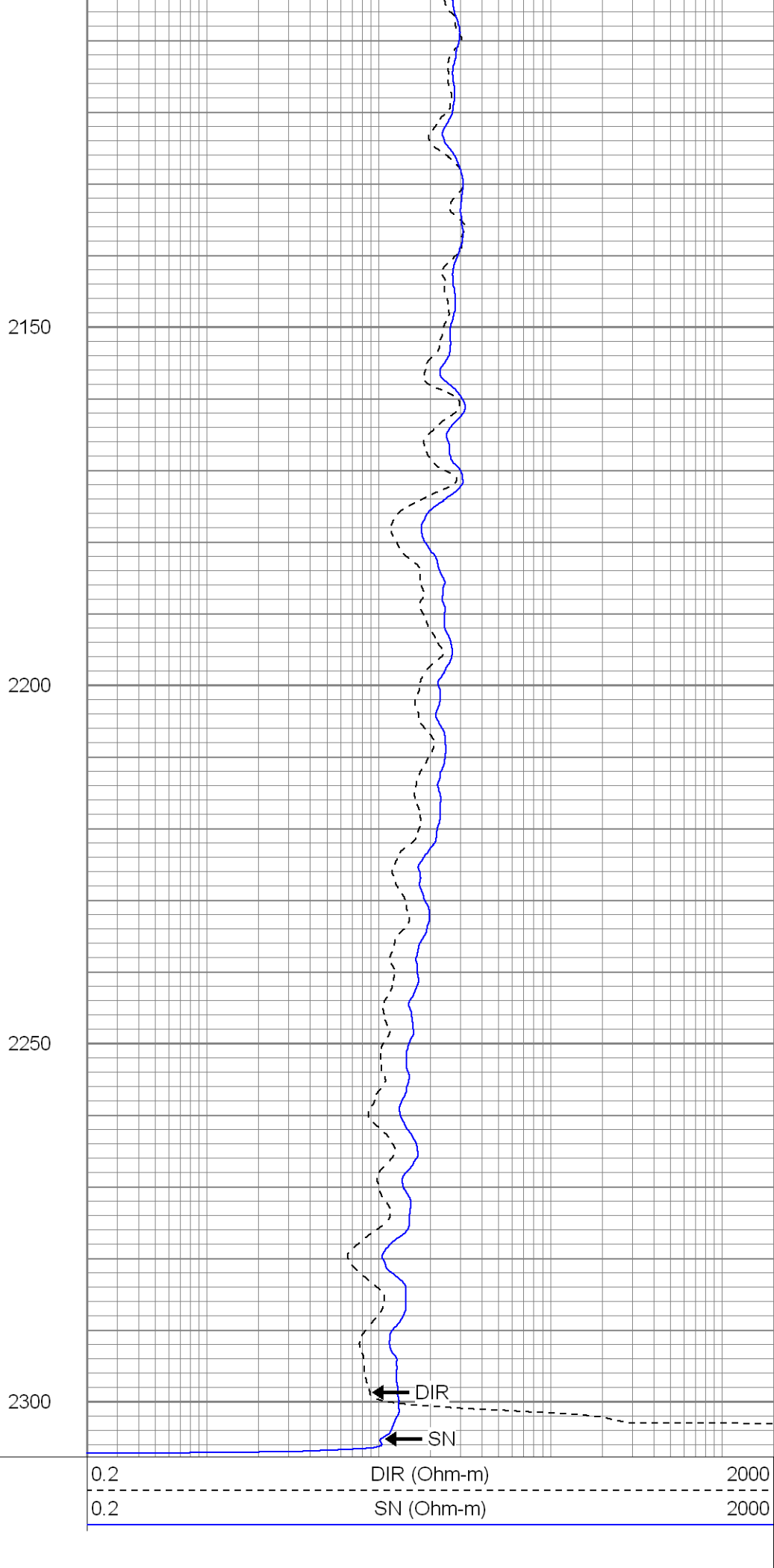
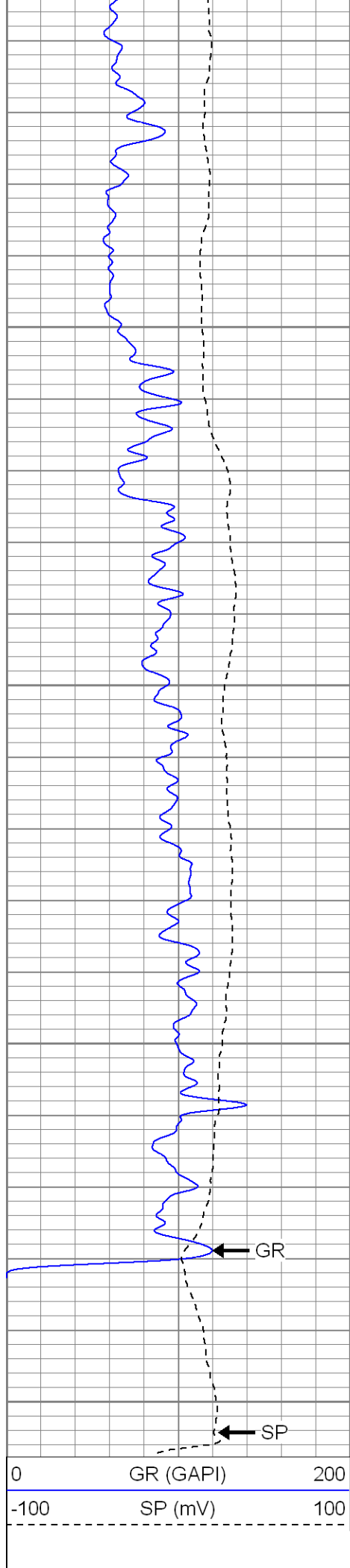
1950

2000

2050

2100





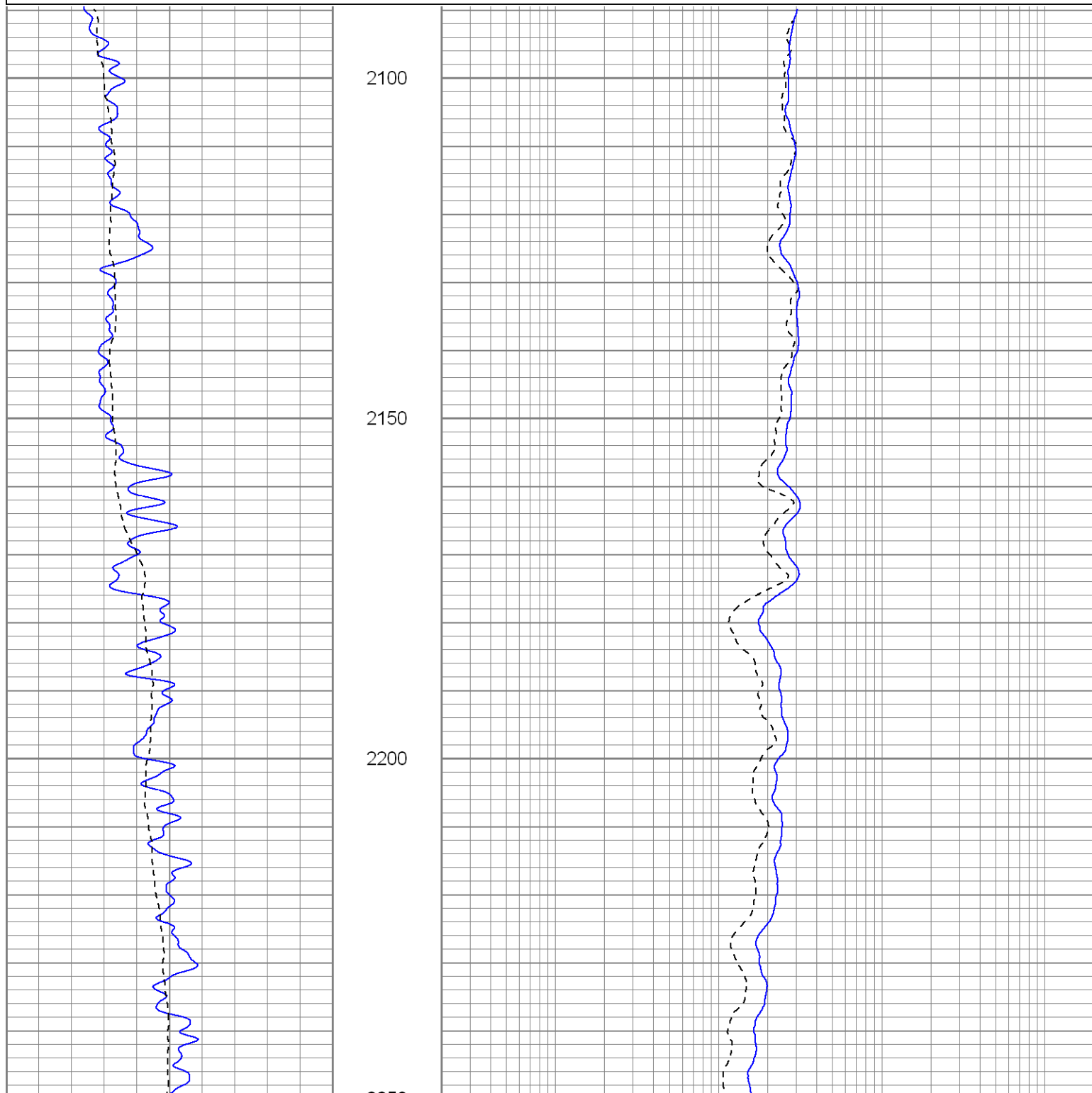


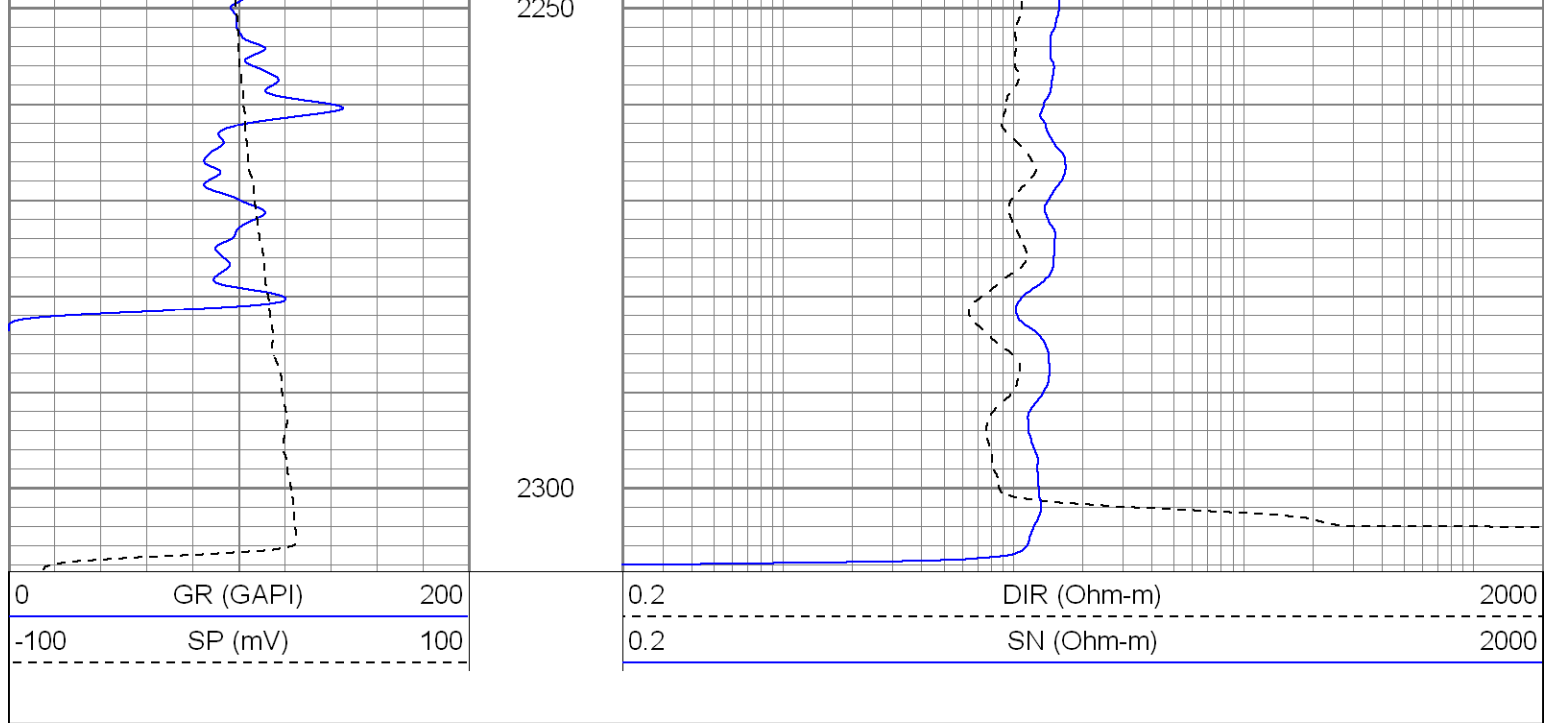
Repeat Section

Database File: islanderdi.db
Dataset Pathname: pass2.1
Presentation Format: iel
Dataset Creation: Mon Dec 21 07:48:01 2009 by Calc Open-Cased 071220
Charted by: Depth in Feet scaled 1:240

0	GR (GAPI)	200
-100	SP (mV)	100

0.2	DIR (Ohm-m)	2000
0.2	SN (Ohm-m)	2000





Calibration Report

Database File: islanderdi.db
 Dataset Pathname: pass3
 Dataset Creation: Mon Dec 21 01:49:38 2009 by Log Open-Cased 071220

Induction Tool Calibration Report

Serial Number: 121
 Tool Model: GL121
 Downhole Cal Performed: Mon Dec 07 06:31:58 2009
 Surface Cal Performed: Fri Dec 04 08:51:07 2009
 After Survey Verification Performed:

Surface Calibration:	Air	Loop	
Conductivity Reference:	0.000	450.000	mmho
Conductivity Reading:	0.005	0.626	V
Internal Reference:	Zero	Cal	
Conductivity Reference:	0.000	500.000	mmho
Conductivity Reading:	0.009	0.631	V

Downhole Calibration:	Internal Zero	Internal Cal	
Conductivity Reference:	3.282	453.999	mmho
Conductivity Reading:	-1.663	456.644	V
Short Normal Reference:	0.000	17.000	Ohm-m
Short Normal Reading:	0.016	0.201	V

Results:	Gain	Offset
Loop Conductivity:	724.756	-3.402
Downhole Correction:	0.983	4.918
Short Normal Resistivity:	91.790	-1.449

Compensated Density Calibration Report



Serial-Model: 2501DHT-DHT
 Source / Verifier: /
 Master Calibration Performed: Fri Dec 04 08:50:44 2009

Master Calibration

	Density		Far Detector	Near Detector	
Magnesium	1.710	g/cc	767.26	303.43	cps

Aluminum	2.590	g/cc	171.91	210.81	cps
Spine Angle = 76.32			Density/Spine Ratio = 0.572		
	Size		Reading		
Small Ring	8.00	in	6196.63		
Large Ring	14.00	in	10494.70		

Gamma Ray Calibration Report					
Serial Number:	2001				
Tool Model:	OH				
Performed:	Fri Dec 04 08:49:38 2009				
Calibrator Value:	1.0		GAPI		
Background Reading:	0.0		cps		
Calibrator Reading:	1.0		cps		
Sensitivity:	0.2500		GAPI/cps		

Sensor	Offset (ft)	Schematic	Description	Len (ft)	OD (in)	Wt (lb)
GR	26.85		None	0.75	1.50	5.00
			GR-OH (2001) 2001	3.56	3.25	40.00
LSD	18.31		CDL-DHT (2501DHT) Digital High Temp CDL Tool	9.69	4.00	201.00
DCAL	18.02					
SSD	17.77					
HEADVOLT	16.00					
DIC	6.89		IEL-GL121 (121)	16.00	4.00	178.00
SP	1.50					

