



SINGLE INDUCTION LOG

Company Pioneer Natural Resources
Well Fujiyama 44-14
Field Purgatorie River
County Las Animas State CO

Location: API # : 05 071 09716 00

699' FSL & 225' FEL

Other Services
CDL

SEC 14 TWP 33S RGE 66W

Permanent Datum Ground Level Elevation 7278'
Log Measured From Kelly Bushing 4' Above G.L.
Drilling Measured From Kelly Bushing

Elevation
K.B. 7282'
D.F. -----
G.L. 7278'

Date 12/17/09

Run Number one

Depth Driller 1930'

Depth Logger 1917'

Bottom Logged Interval 1915'

Top Log Interval 470'

Casing Driller 500'

Casing Logger 501'

Bit Size 7 7/8"

Type Fluid in Hole water

Density / Viscosity ///

pH / Fluid Loss ///

Source of Sample ///

Rm @ Meas. Temp ///

Rmf @ Meas. Temp ///

Rmc @ Meas. Temp ///

Source of Rmf / Rmc ///

Rm @ BHT ///

Time Circulation Stopped 3:30 a.m.

Time Logger on Bottom 8:50 a.m.

Maximum Recorded Temperature ///

Equipment Number 697

Location Trinidad

Recorded By Worley

Witnessed By Mr. Vigil

<<< Fold Here >>>

All interpretations are opinions based on inferences from electrical or other measurements and we cannot and do not guarantee the accuracy or correctness of any interpretation, and we shall not, except in the case of gross or willful negligence on our part, be liable or responsible for any loss, costs, damages, or expenses incurred or sustained by anyone resulting from any interpretation made by any of our officers, agents or employees. These interpretations are also subject to our general terms and conditions set out in our current Price Schedule.

Comments

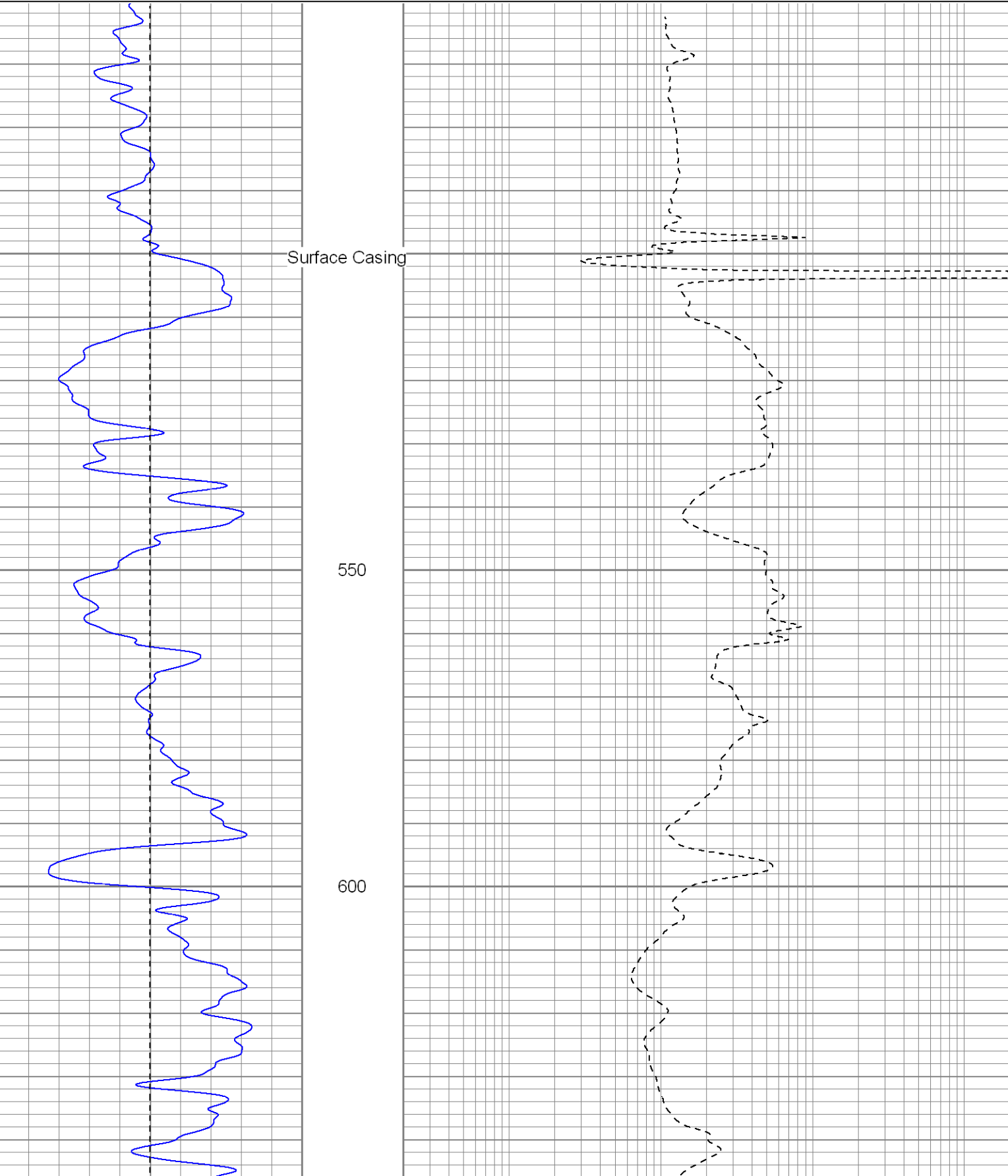
Sarcillo to Primero Ranch, go thru gate (0000), at Y go right, go down around compressor station, take next left across cattle guard (Smith Canyon Rd.), follow to Elk Canyon Rd., take right, next right to location.

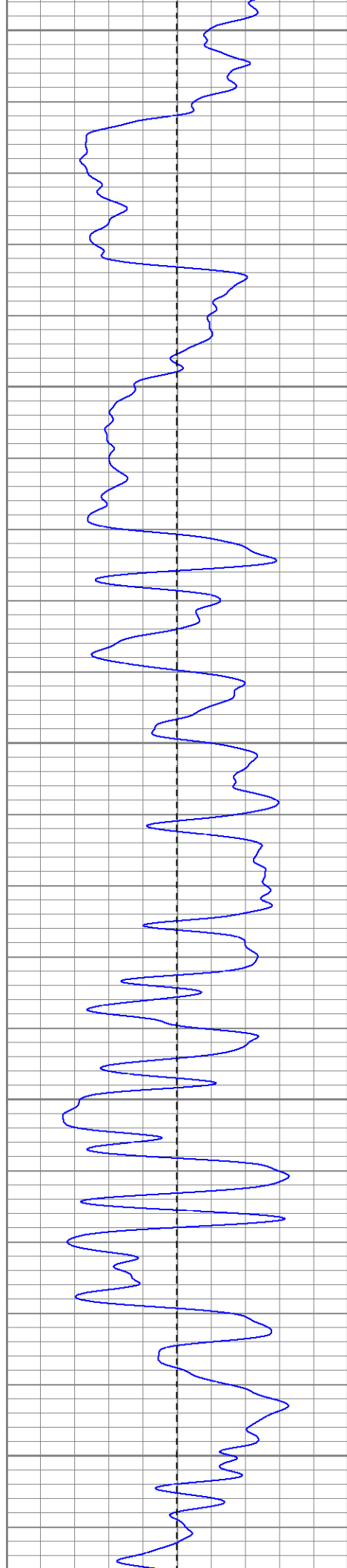


Main Pass

Database File: fujiyamadi.db
Dataset Pathname: pass2.1
Presentation Format: iel
Dataset Creation: Thu Dec 17 13:13:06 2009 by Calc Open-Cased 071220
Charted by: Depth in Feet scaled 1:240

0	GR (GAPI)	200	0.2	DIR (Ohm-m)	2000
-100	SP (mV)	100	0.2	SN (Ohm-m)	2000





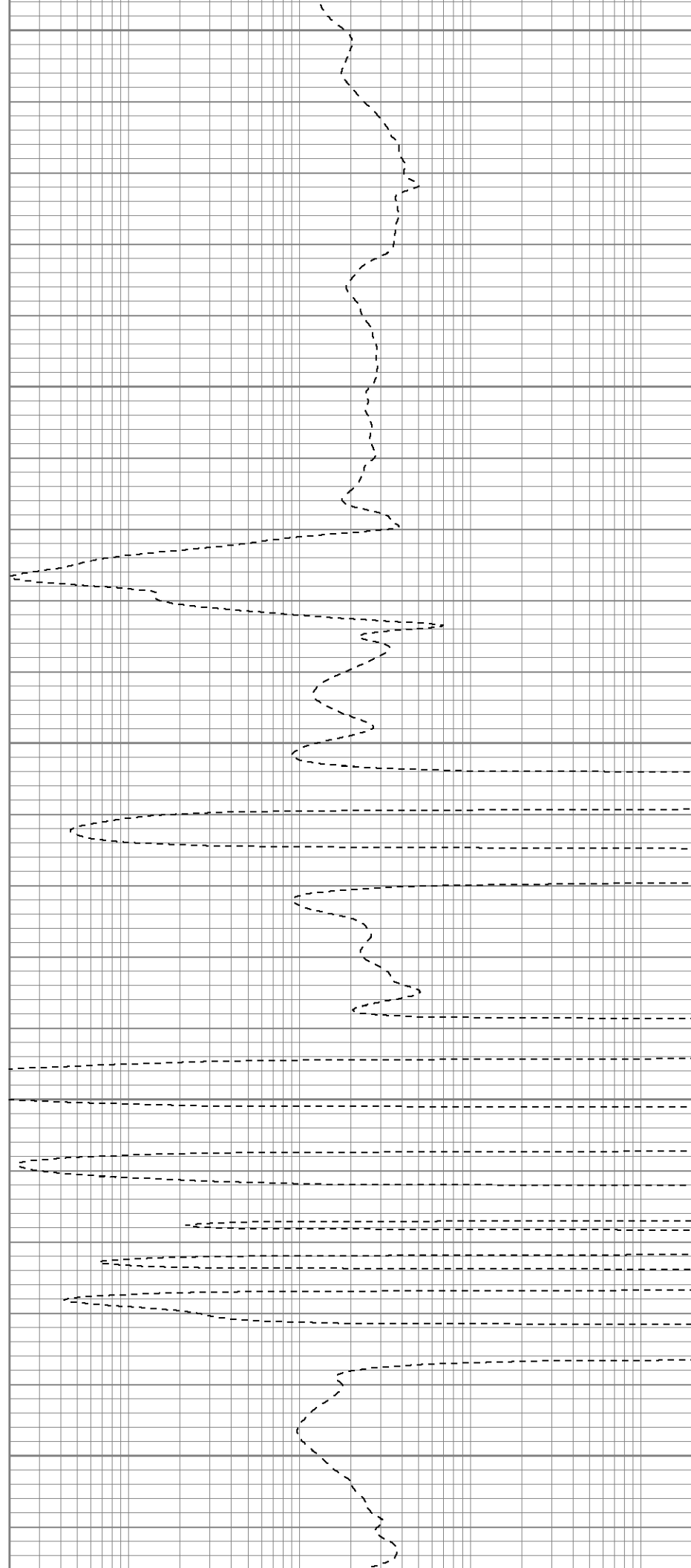
650

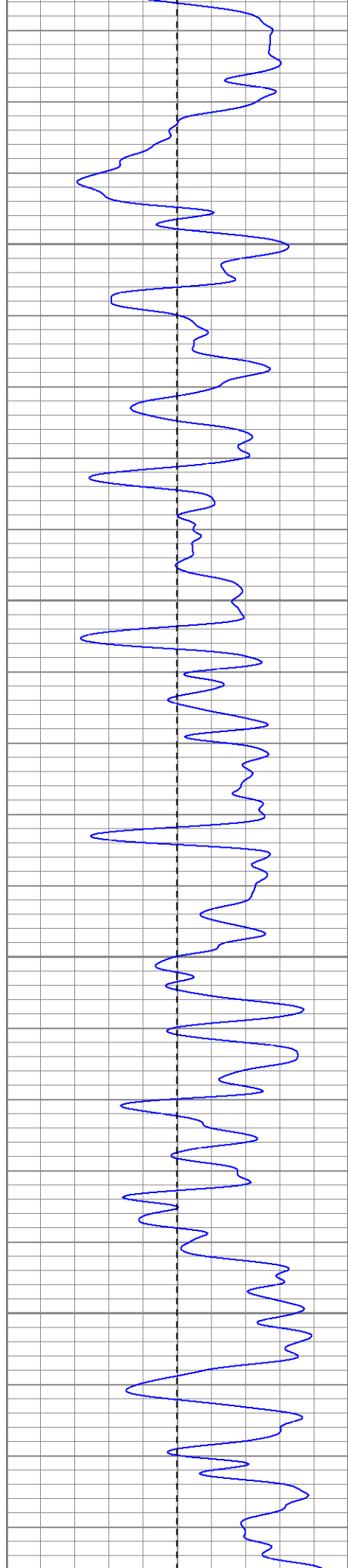
700

750

800

850



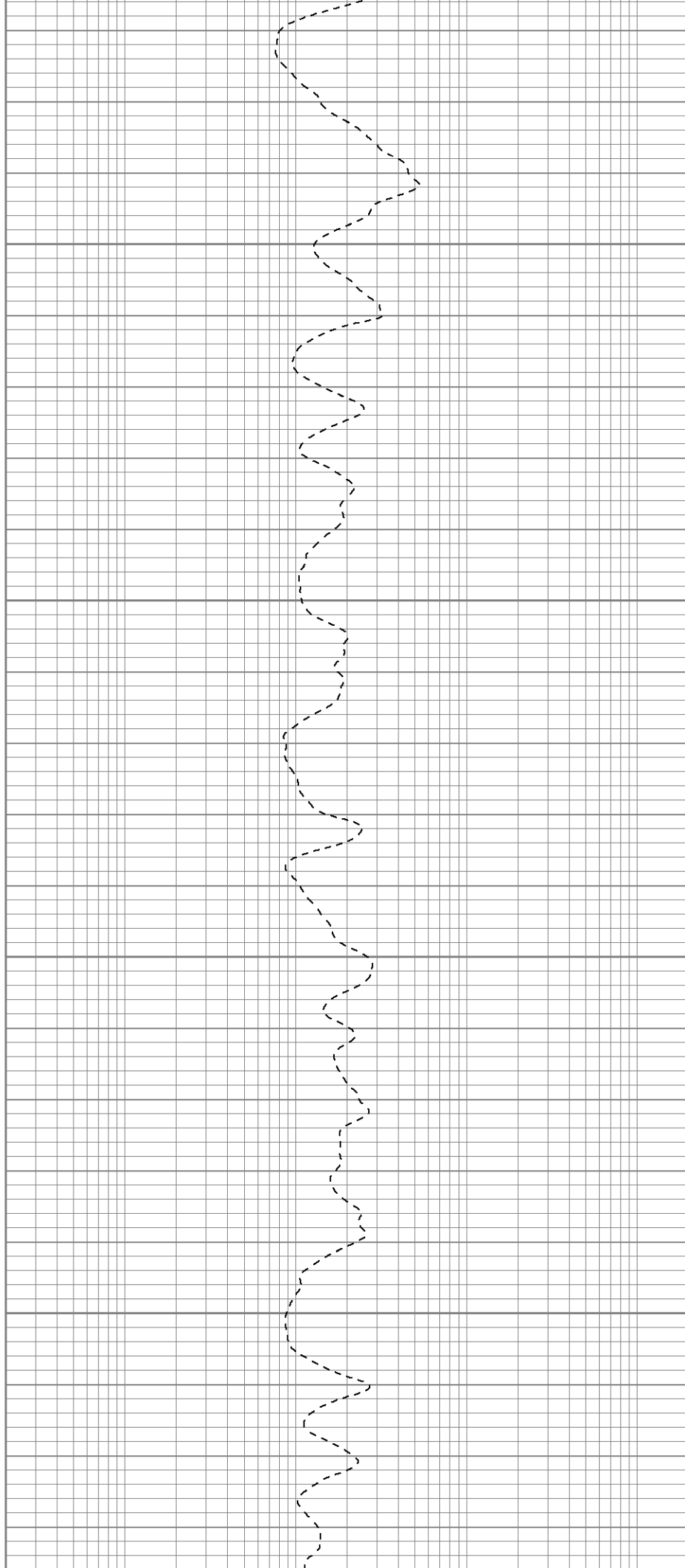


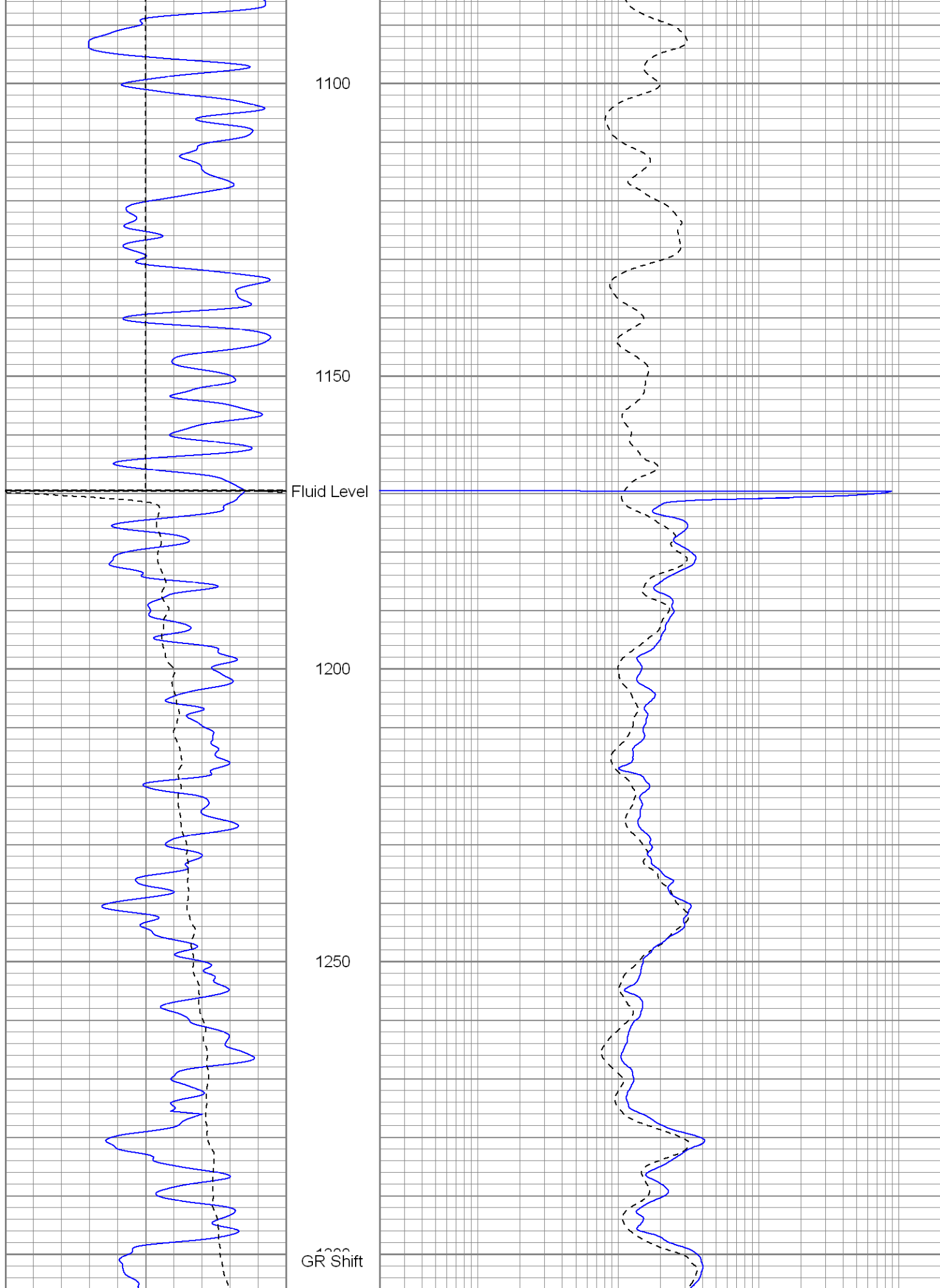
900

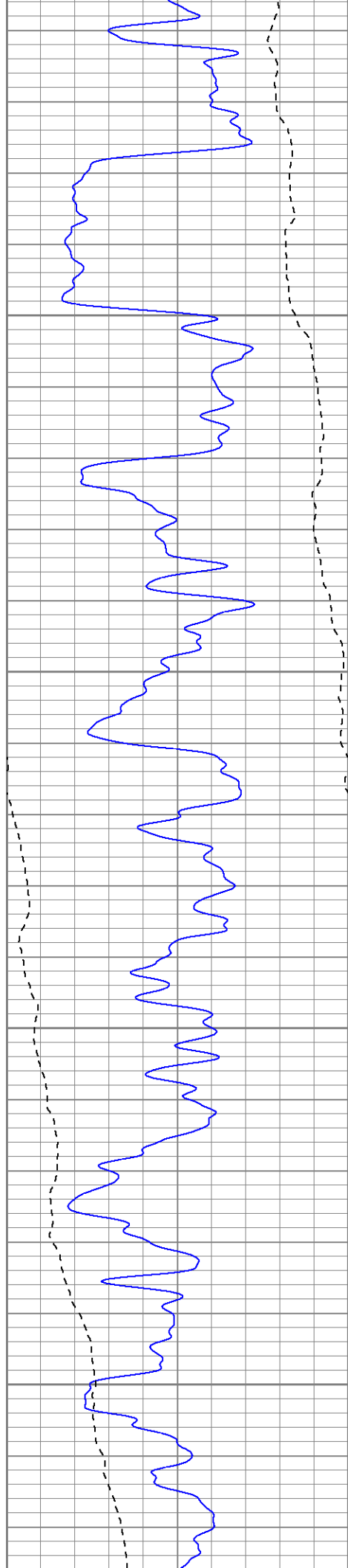
950

1000

1050





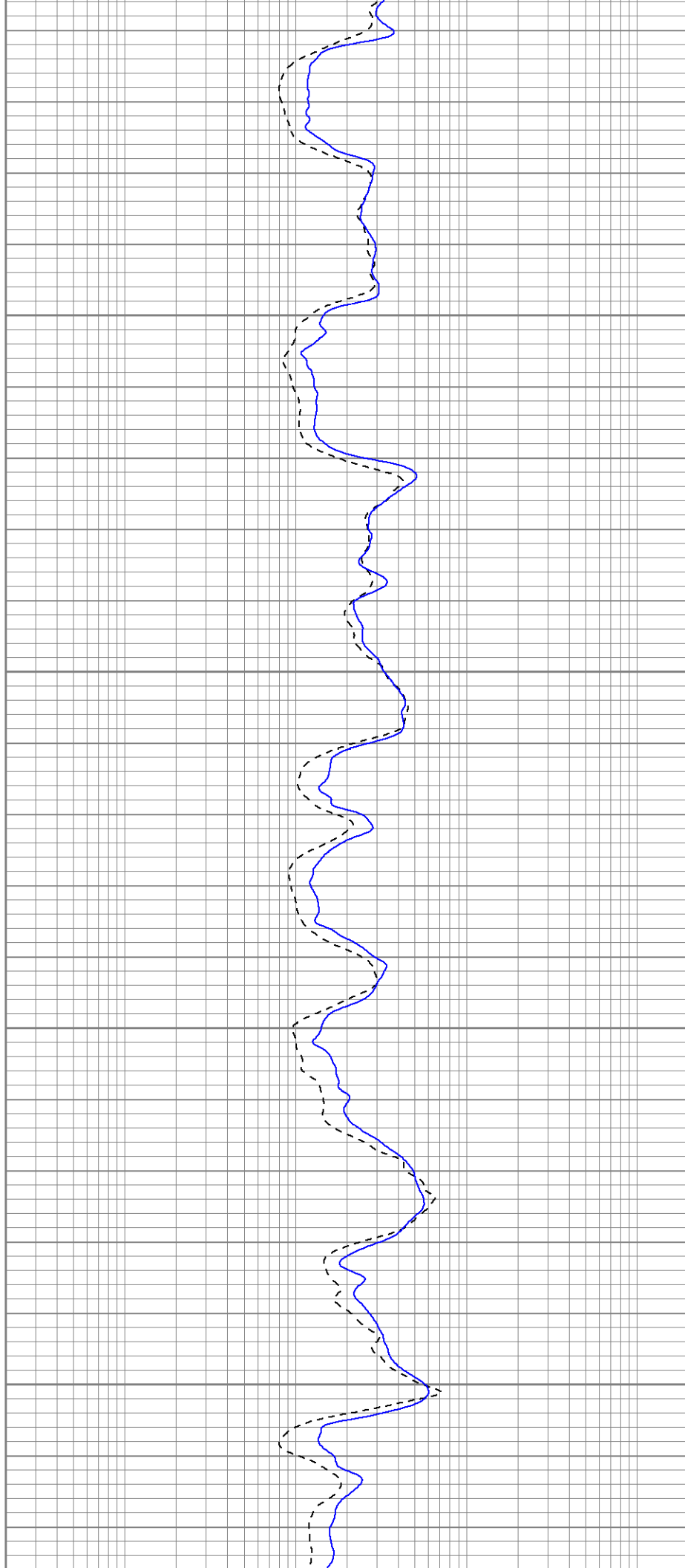


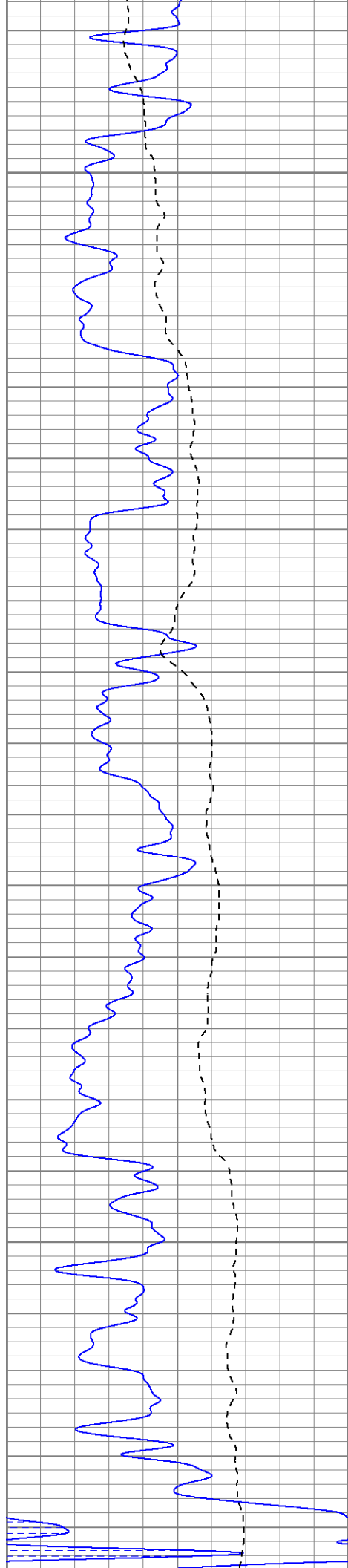
1350

1400

1450

1500



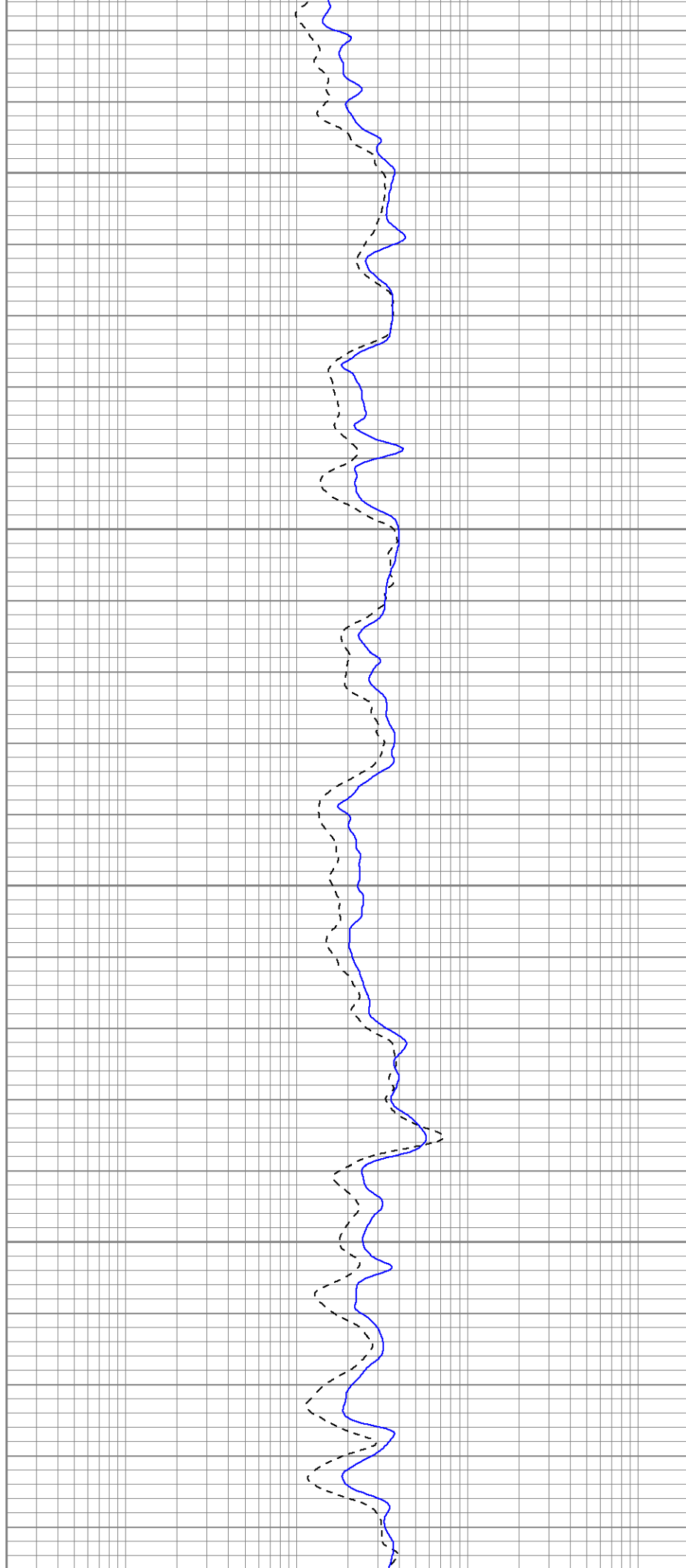


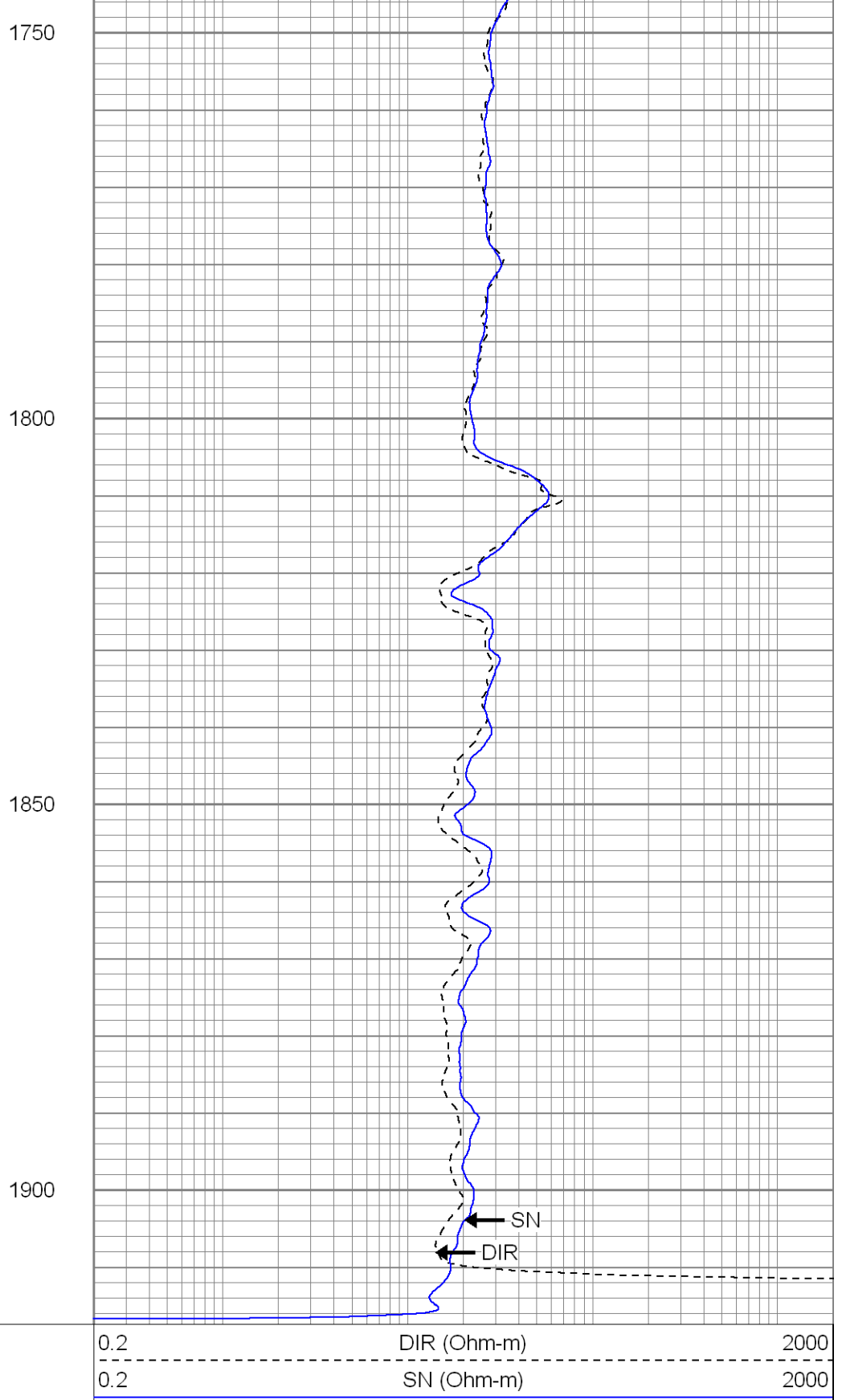
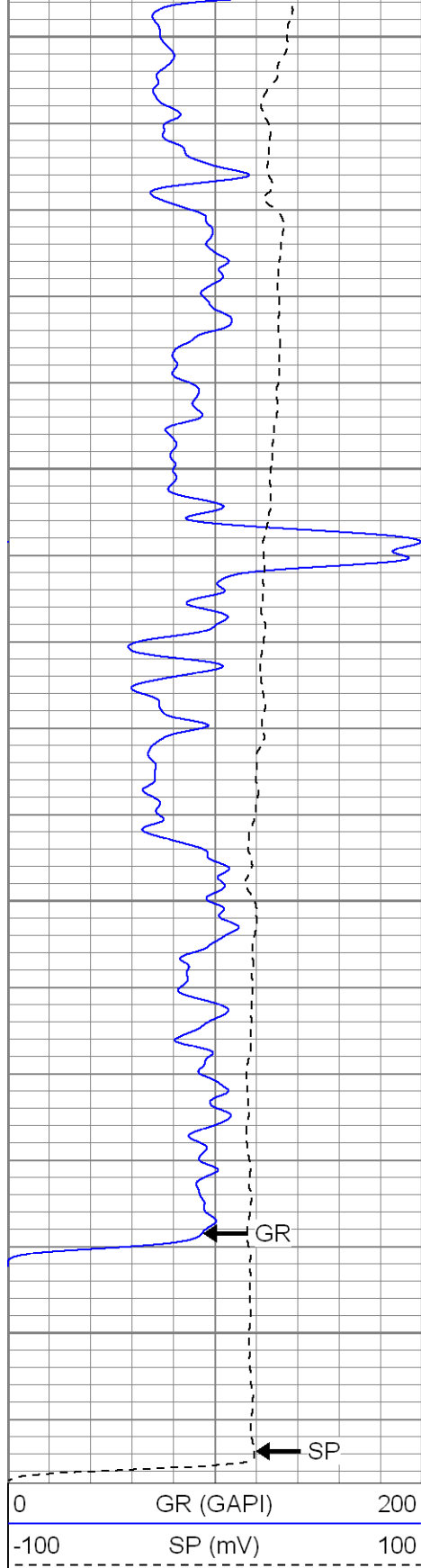
1550

1600

1650

1700

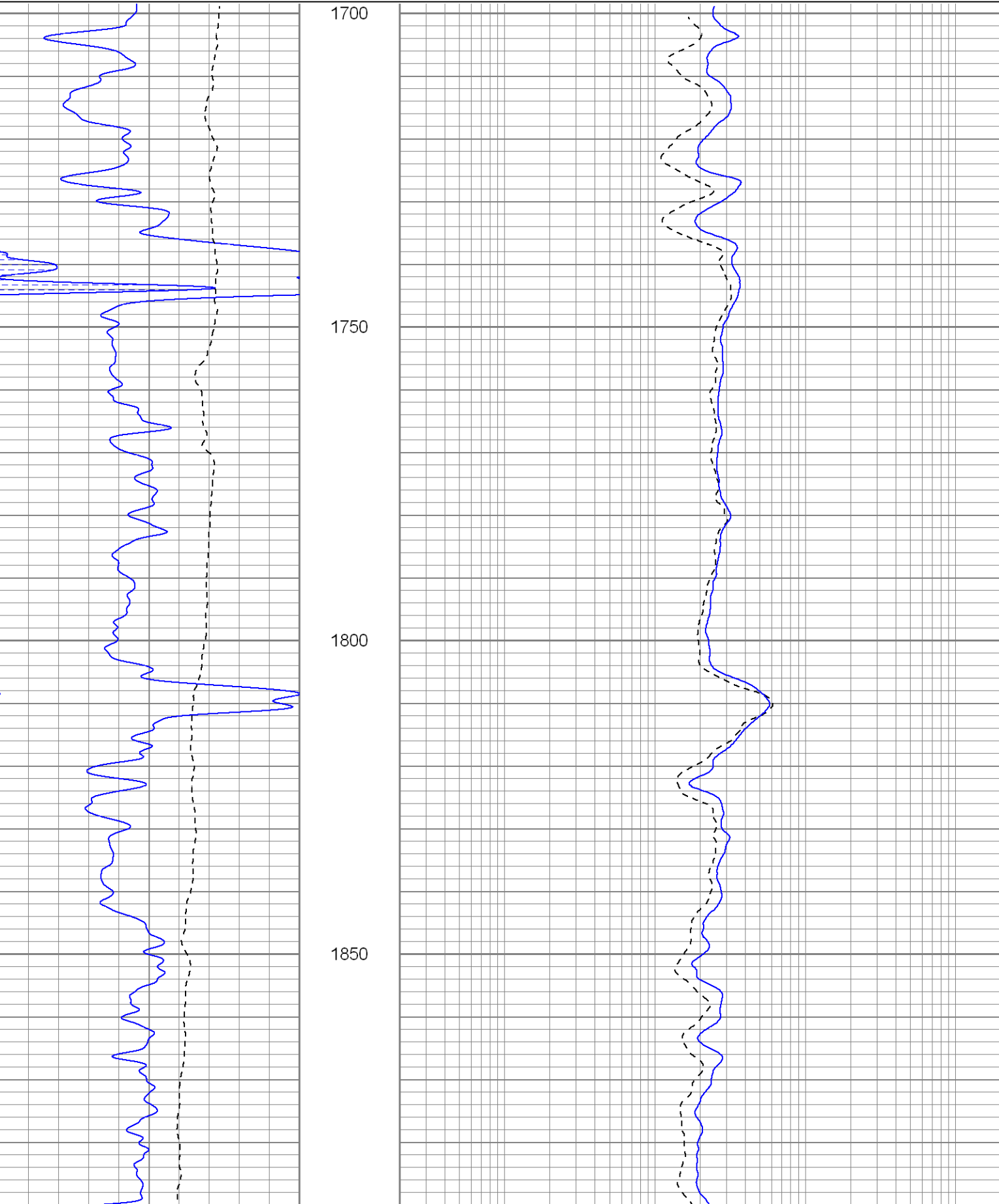


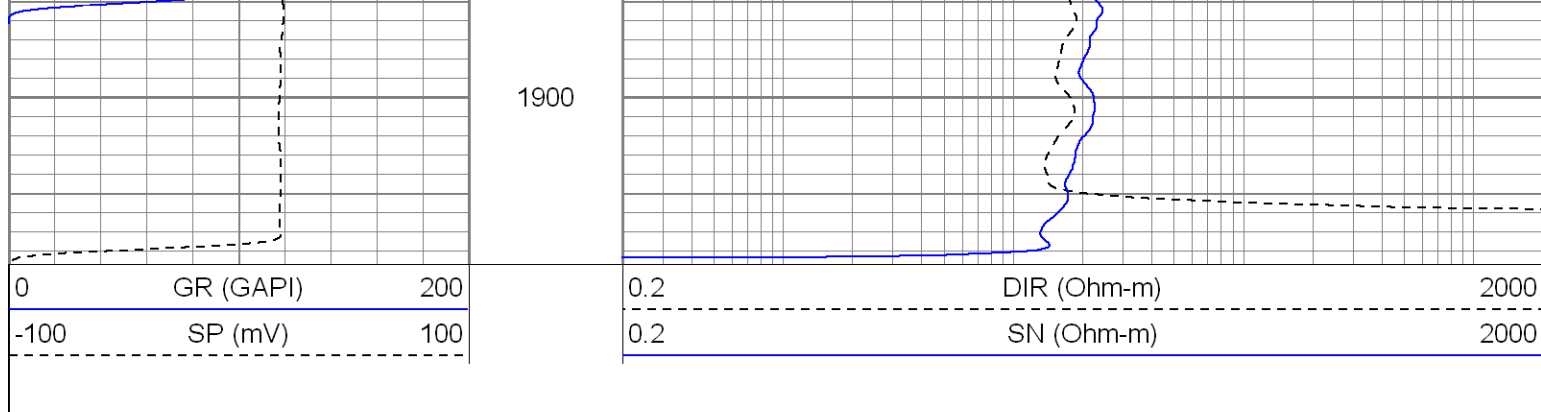


Repeat Section

0	GR (GAPI)	200
-100	SP (mV)	100

0.2	DIR (Ohm-m)	2000
0.2	SN (Ohm-m)	2000





Calibration Report

Database File: fujiyamadi.db
 Dataset Pathname: pass2
 Dataset Creation: Thu Dec 17 09:06:24 2009 by Log Open-Cased 071220

Induction Tool Calibration Report

Serial Number: 121
 Tool Model: GL121
 Downhole Cal Performed: Mon Dec 07 06:31:58 2009
 Surface Cal Performed: Fri Dec 04 08:51:07 2009
 After Survey Verification Performed:

Surface Calibration:	Air	Loop	
Conductivity Reference:	0.000	450.000	mmho
Conductivity Reading:	0.005	0.626	V
Internal Reference:	Zero	Cal	
Conductivity Reference:	0.000	500.000	mmho
Conductivity Reading:	0.009	0.631	V

Downhole Calibration:	Internal Zero	Internal Cal	
Conductivity Reference:	3.282	453.999	mmho
Conductivity Reading:	-1.663	456.644	V
Short Normal Reference:	0.000	17.000	Ohm-m
Short Normal Reading:	0.016	0.201	V

Results:	Gain	Offset
Loop Conductivity:	724.756	-3.402
Downhole Correction:	0.983	4.918
Short Normal Resistivity:	91.790	-1.449

Compensated Density Calibration Report

Serial-Model: 2501DHT-DHT
 Source / Verifier: /
 Master Calibration Performed: Fri Dec 04 08:50:44 2009

Master Calibration

	Density		Far Detector	Near Detector	
Magnesium	1.710	g/cc	767.26	303.43	cps
Aluminum	2.590	g/cc	171.91	210.81	cps
Spine Angle = 76.32			Density/Spine Ratio = 0.572		
	Size		Reading		
Small Ring	8.00	in	6196.63		
Large Ring	14.00	in	10494.70		





Gamma Ray Calibration Report

Serial Number: 2001
 Tool Model: OH
 Performed: Fri Dec 04 08:49:38 2009

 Calibrator Value: 1.0 GAPI

 Background Reading: 0.0 cps
 Calibrator Reading: 1.0 cps

 Sensitivity: 0.2500 GAPI/cps

Sensor	Offset (ft)	Schematic	Description	Len (ft)	OD (in)	Wt (lb)
GR	26.85		None	0.75	1.50	5.00
			GR-OH (2001) 2001	3.56	3.25	40.00
			CDL-DHT (2501DHT) Digital High Temp CDL Tool	9.69	4.00	201.00
LSD	18.31		IEL-GL121 (121)	16.00	4.00	178.00
DCAL	18.02					
SSD	17.77					
HEADVOLT	16.00					
DIC	6.89		IEL-GL121 (121)	16.00	4.00	178.00
SP	1.50					
SN	1.00					

Dataset: fujiyamadi.db: field/well/run1/pass2
 Total Length: 30.00 ft
 Total Weight: 424.00 lb
 O.D. 4.00 in