



COMPENSATED DENSITY LOG

Company	Pioneer Natural Resources	Company	Pioneer Natural Resources
Well	Fujiyama 44-14	Well	Fujiyama 44-14
Field	Purgatorie River	Field	Purgatorie River
County	Las Animas	County	Las Animas
State	CO	State	CO
Location:	API # : 05 071 09716 00 699' FSL & 225' FEL	Other Services	SIL
Permanent Datum	SEC 14 TWP 33S RGE 66W	Elevation	
Log Measured From	Ground Level	K.B. 7282'	
Drilling Measured From	Kelly Bushing 4' Above G.L.	D.F. -----	
	Kelly Bushing	G.L. 7278'	
Date	12/17/09		
Run Number	one		
Depth Driller	1930'		
Depth Logger	1917'		
Bottom Logged Interval	1915'		
Top Log Interval	470'		
Casing Driller	500'		
Casing Logger	501'		
Bit Size	7 7/8"		
Type Fluid in Hole	water		
Density / Viscosity	///		
pH / Fluid Loss	///		
Source of Sample	///		
Rm @ Meas. Temp	///		
Rmf @ Meas. Temp	///		
Rmc @ Meas. Temp	///		
Source of Rmf / Rmc	///		
Rm @ BHT	///		
Time Circulation Stopped	3:30 a.m.		
Time Logger on Bottom	8:50 a.m.		
Maximum Recorded Temperature	///		
Equipment Number	697		
Location	Trinidad		
Recorded By	Worley		
Witnessed By	Mr. Vigil		

<<< Fold Here >>>

All interpretations are opinions based on inferences from electrical or other measurements and we cannot and do not guarantee the accuracy or correctness of any interpretation, and we shall not, except in the case of gross or willful negligence on our part, be liable or responsible for any loss, costs, damages, or expenses incurred or sustained by anyone resulting from any interpretation made by any of our officers, agents or employees. These interpretations are also subject to our general terms and conditions set out in our current Price Schedule.

Comments

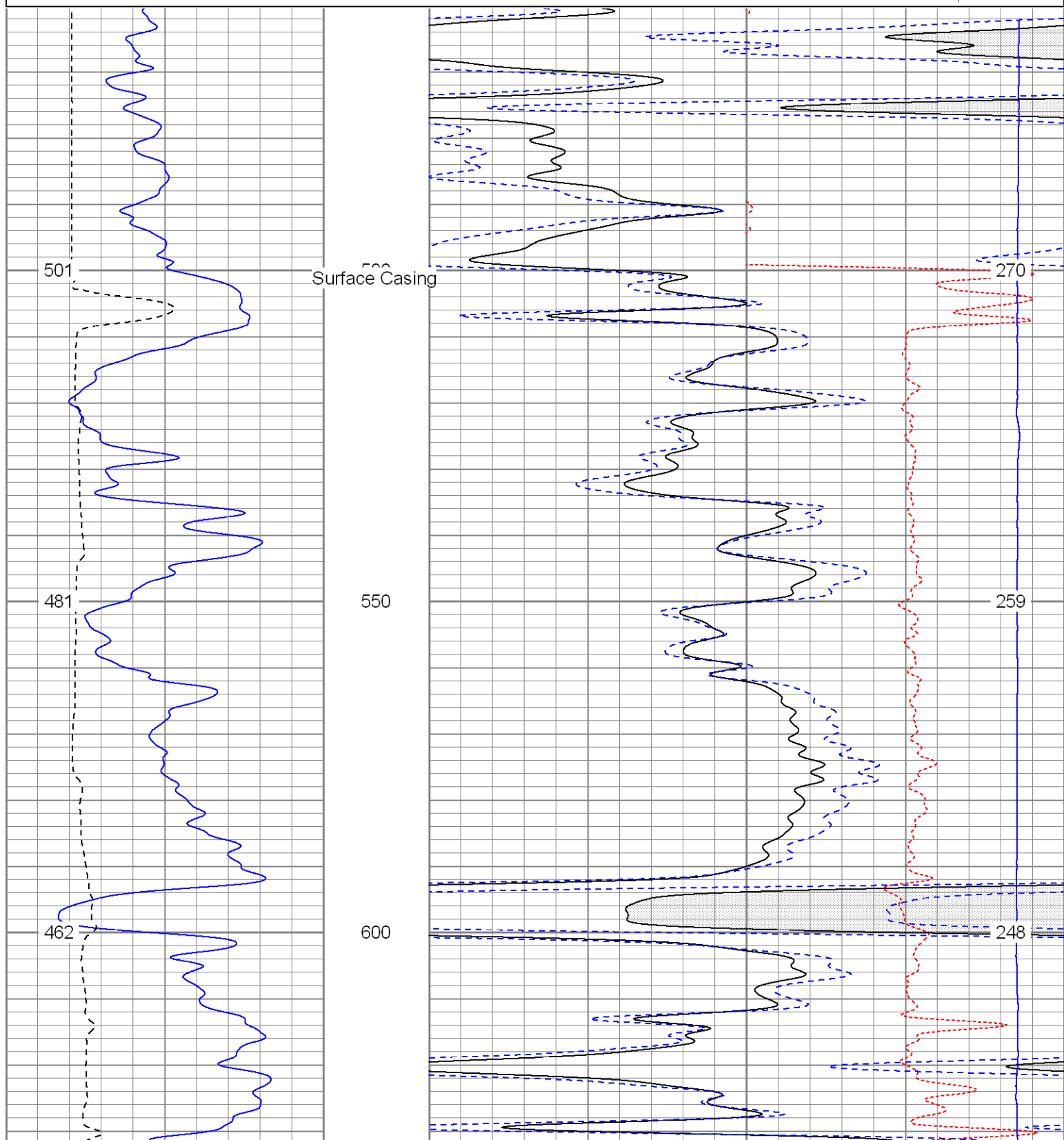
Sarcillo to Primero Ranch, go thru gate (0000), at Y go right, go down around compressor station, take next left across cattle guard (Smith Canyon Rd.), follow to Elk Canyon Rd., take right, next right to location.

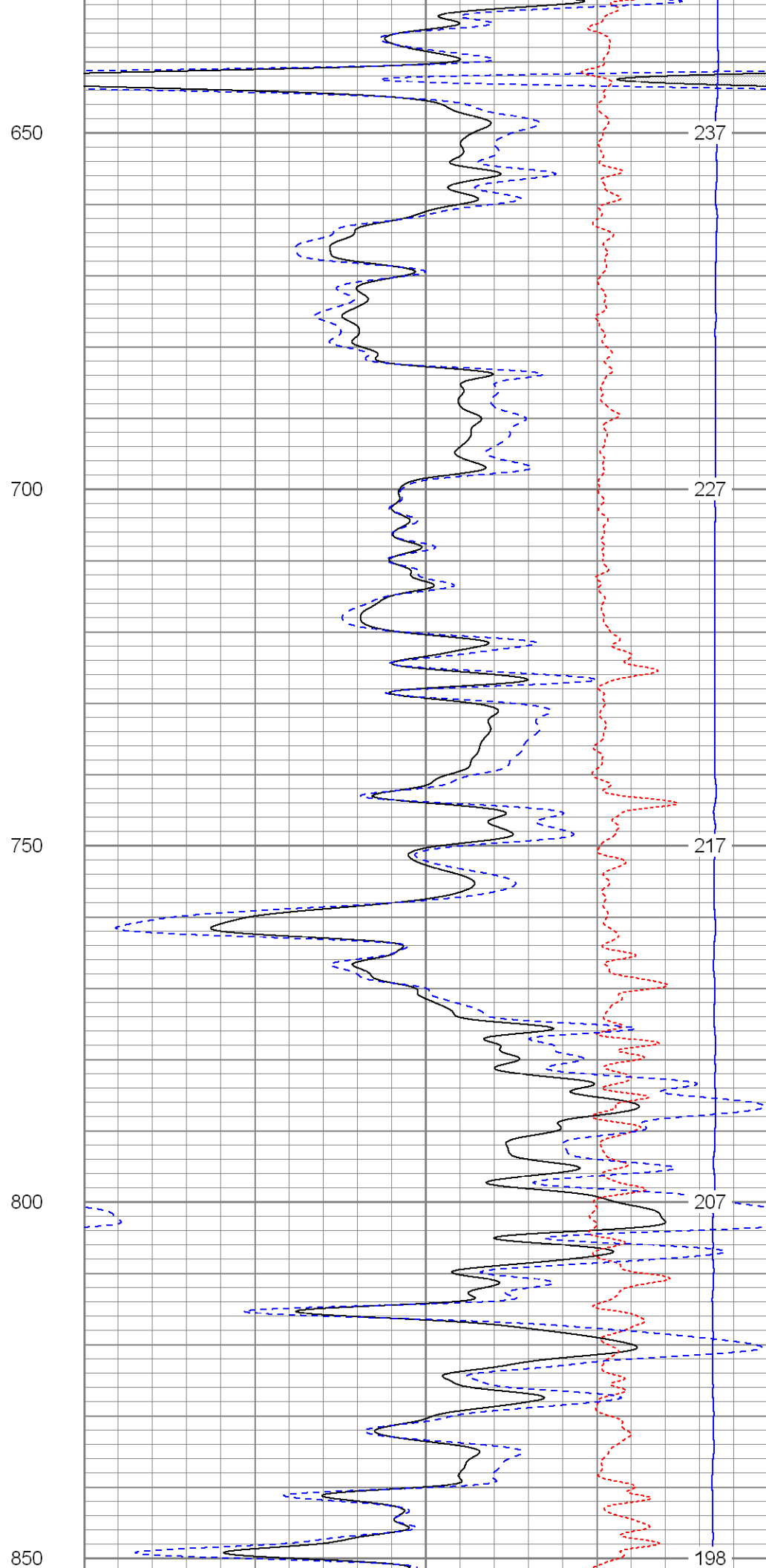
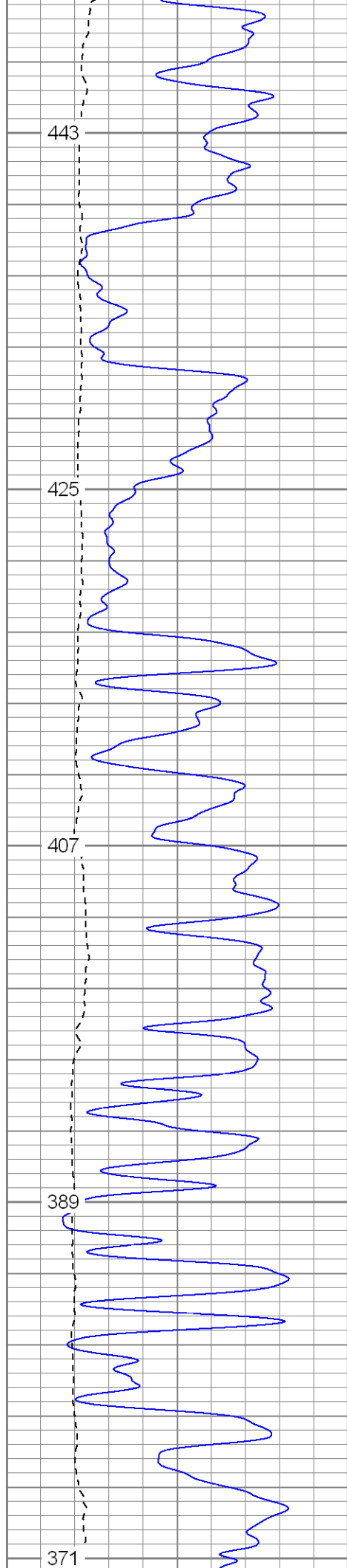


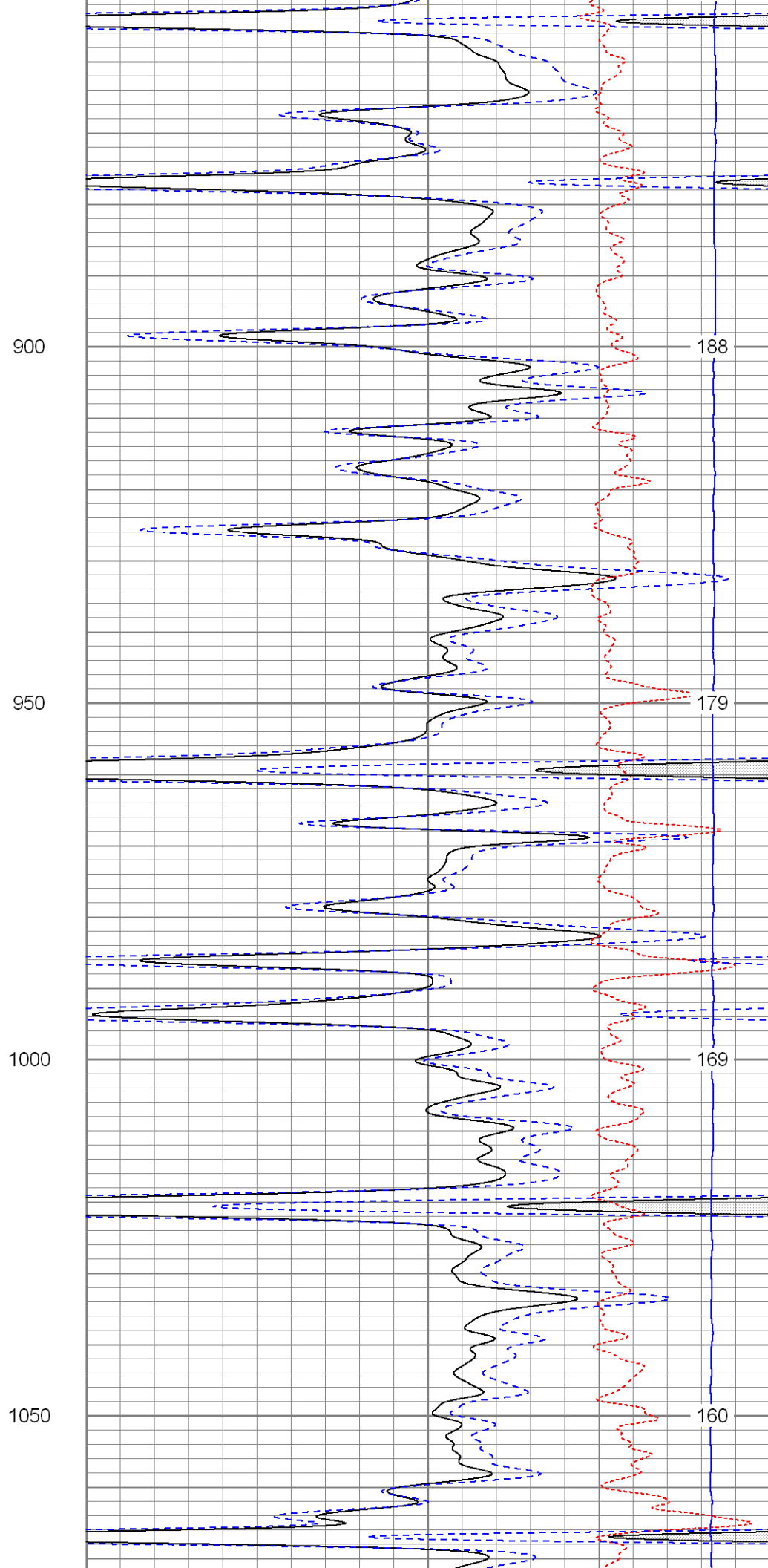
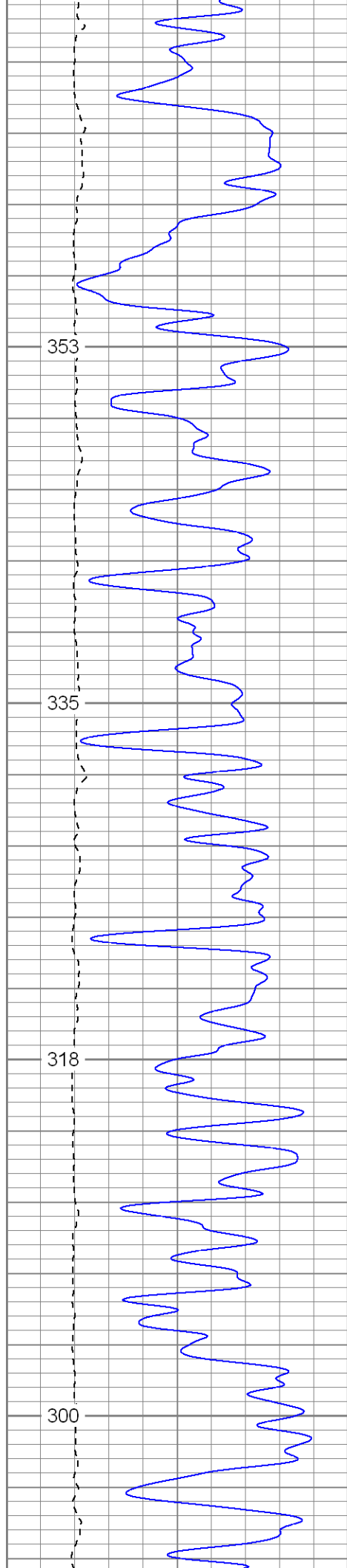
Main Pass

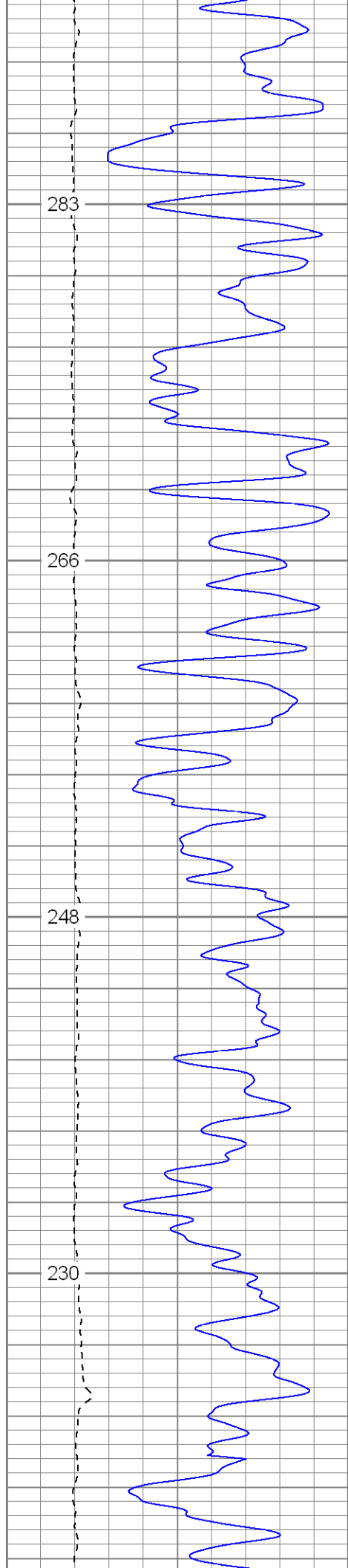
Database File: fujiyamadi.db
Dataset Pathname: pass2.2
Presentation Format: cdl
Dataset Creation: Thu Dec 17 13:30:00 2009 by Calc Open-Cased 071220
Charted by: Depth in Feet scaled 1:240

0	GR (GAPI)	200	2	RHOB (g/cc)	3	
6	DCAL (in)	16	1	RHOB (g/cc)	2	
TBHV (ft3)			30	DPOR (pu)	-10	
				-0.5	RHOC (g/cc)	0.5
				7000	LTEN (lb)	0
						ABHV (ft3)









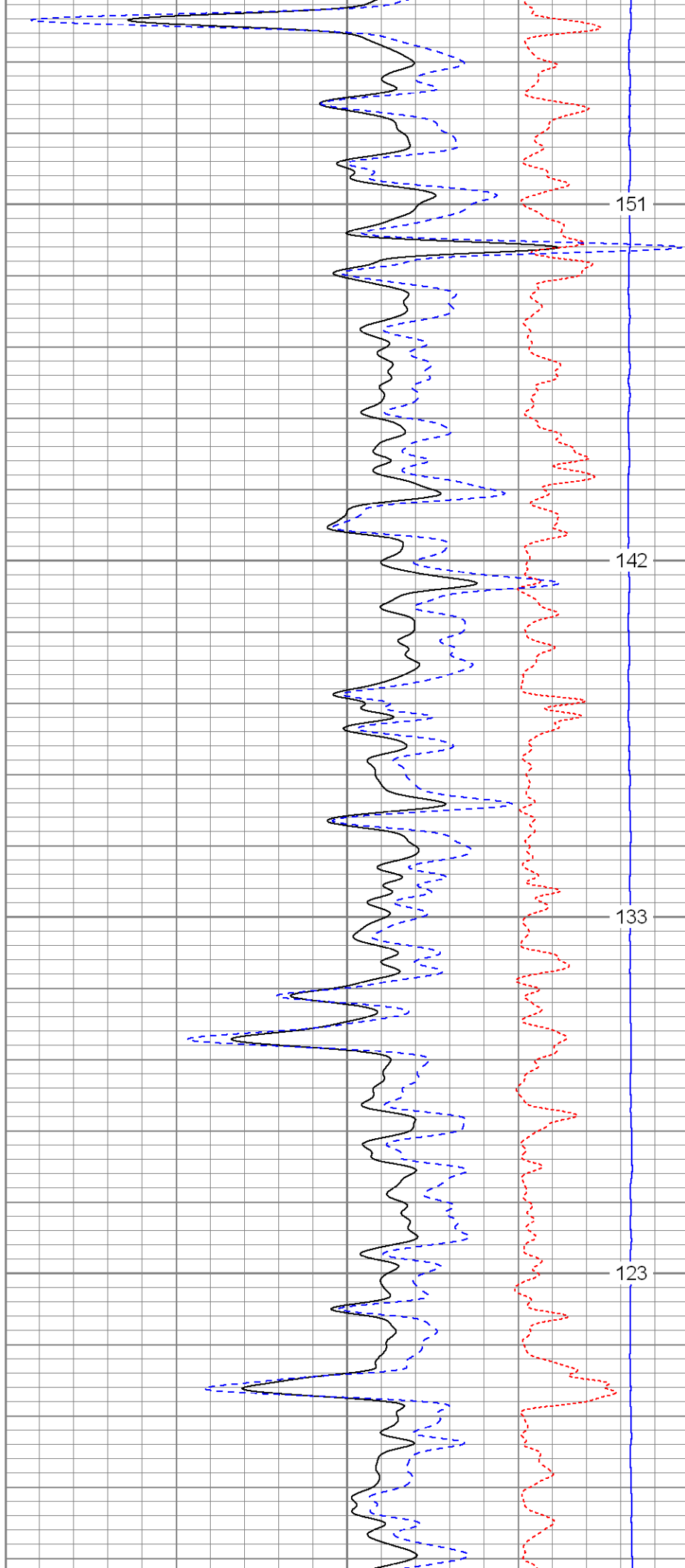
Fluid Level

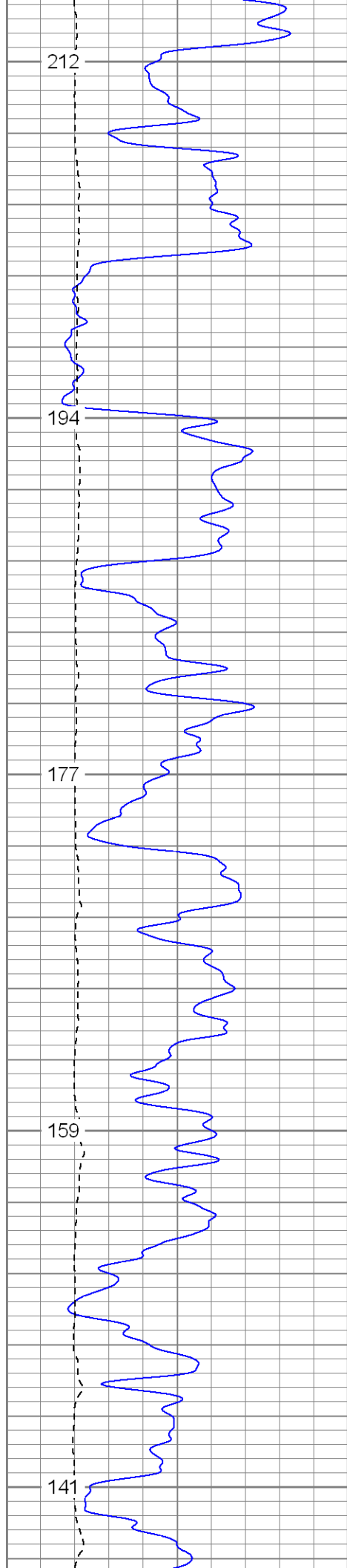
1100

1150

1200

1250





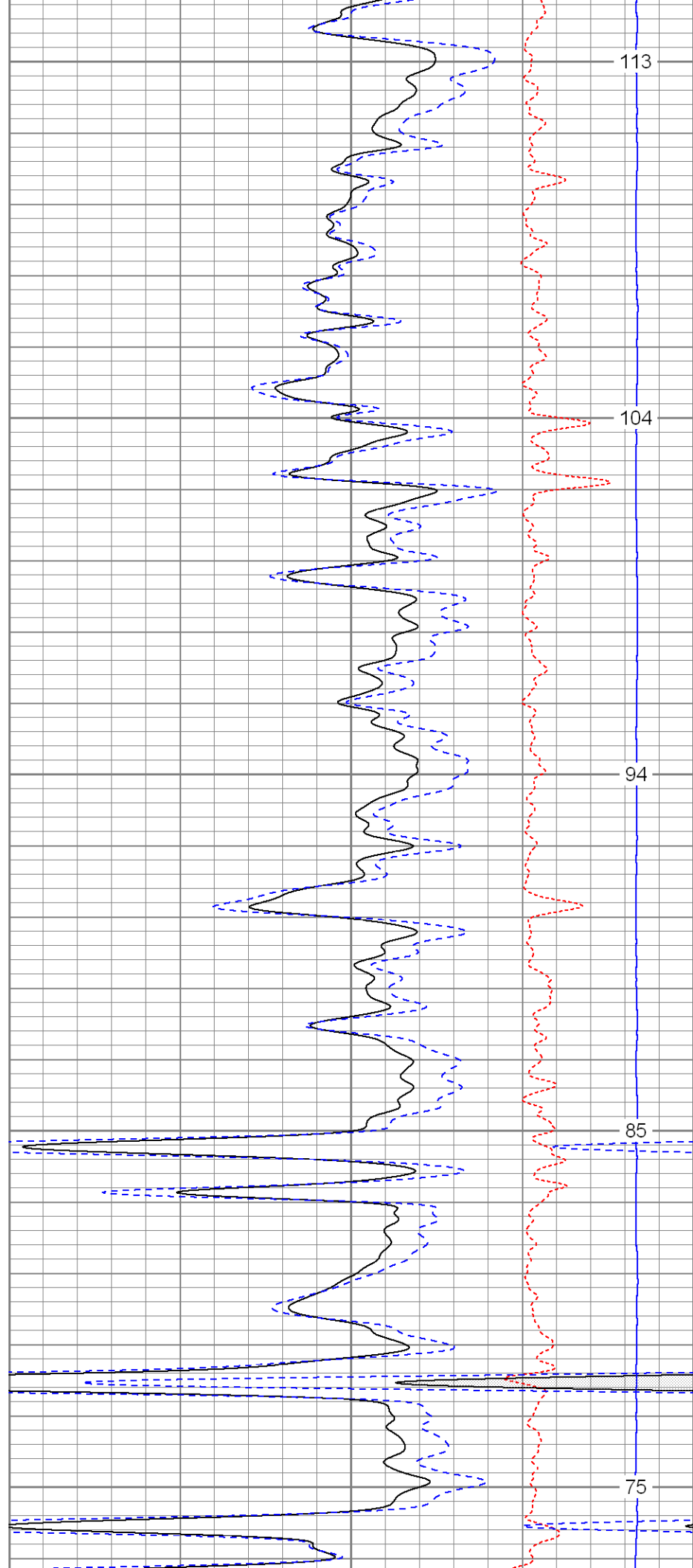
GR Shift

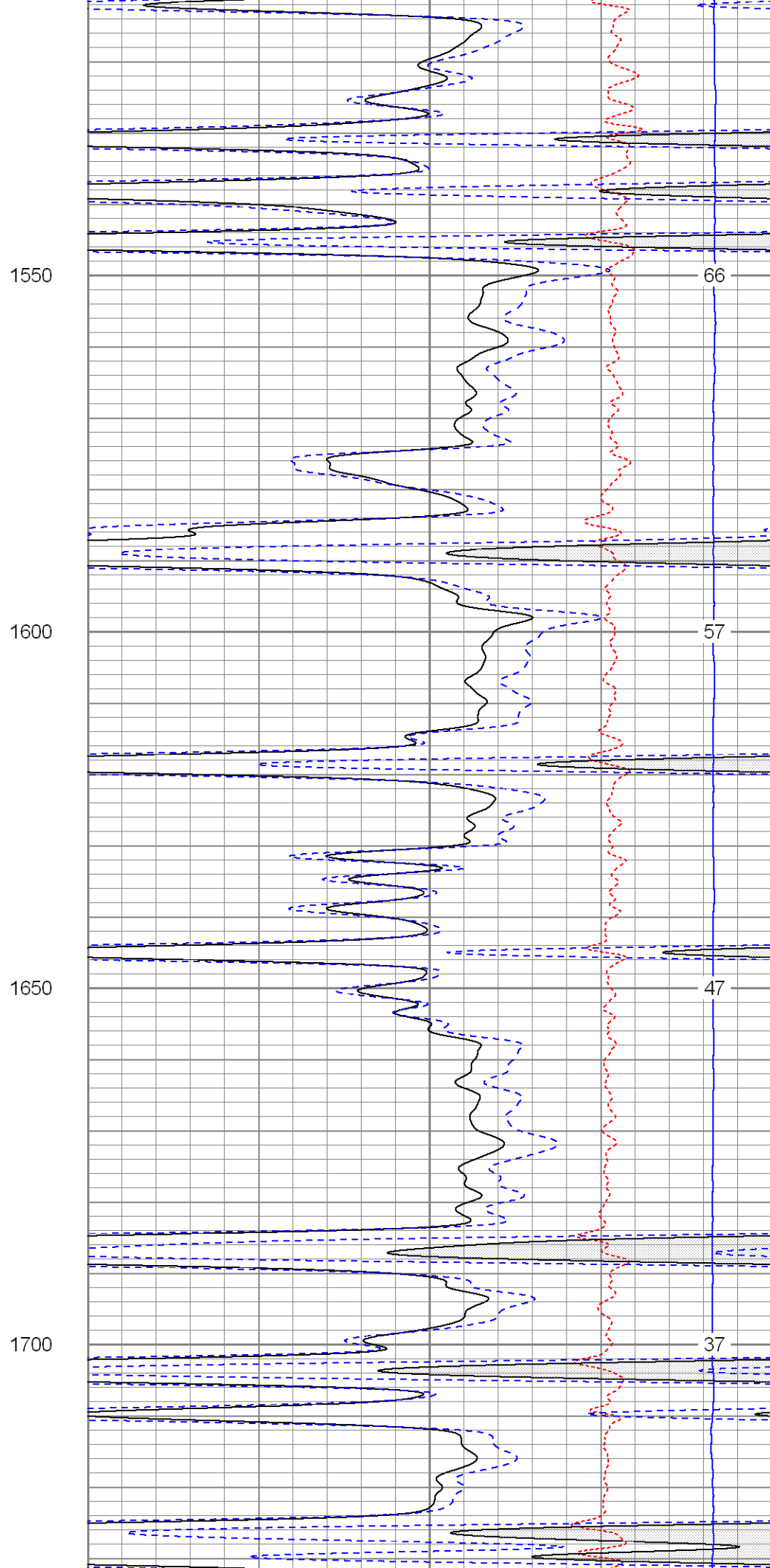
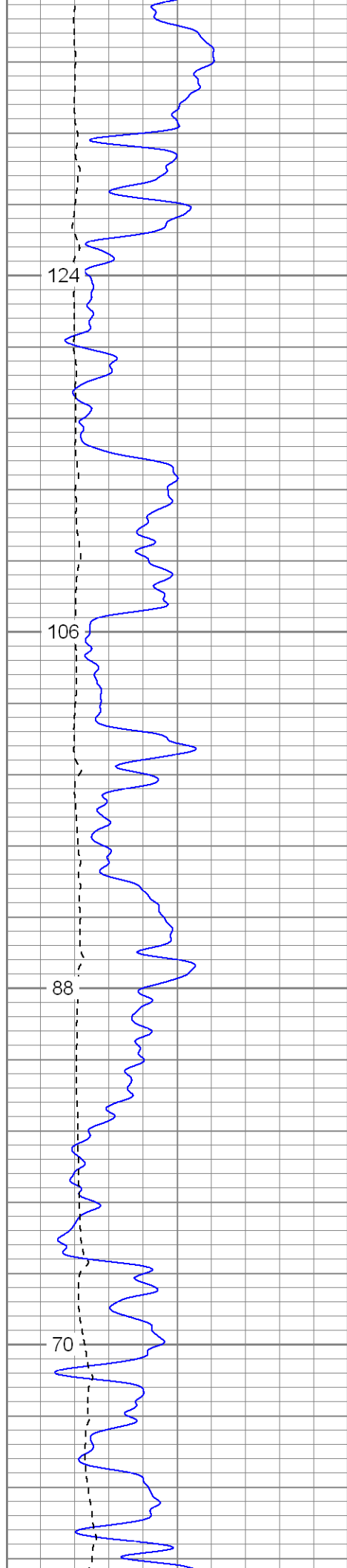
1350

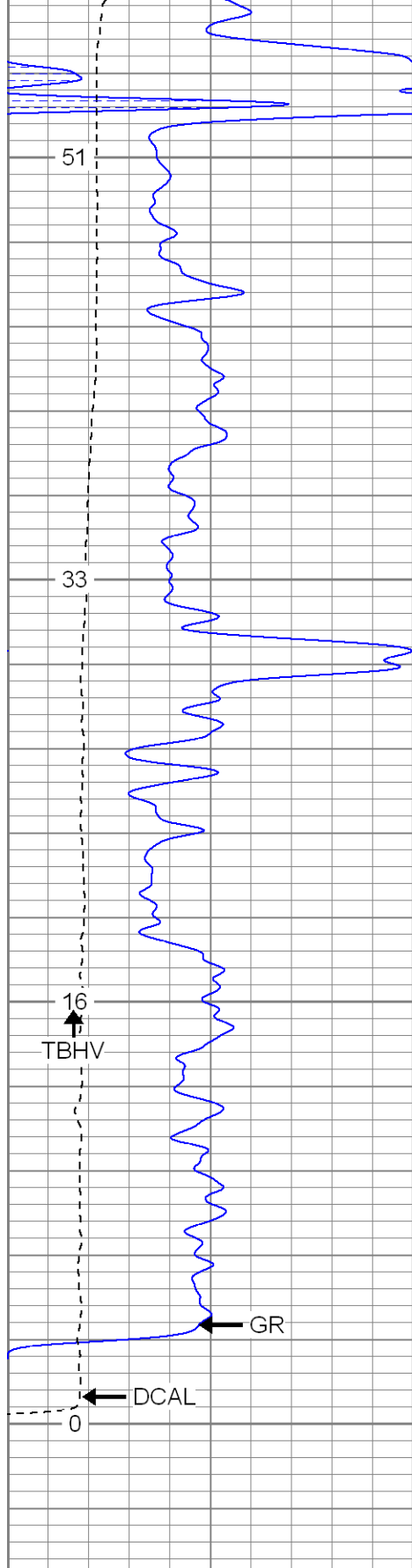
1400

1450

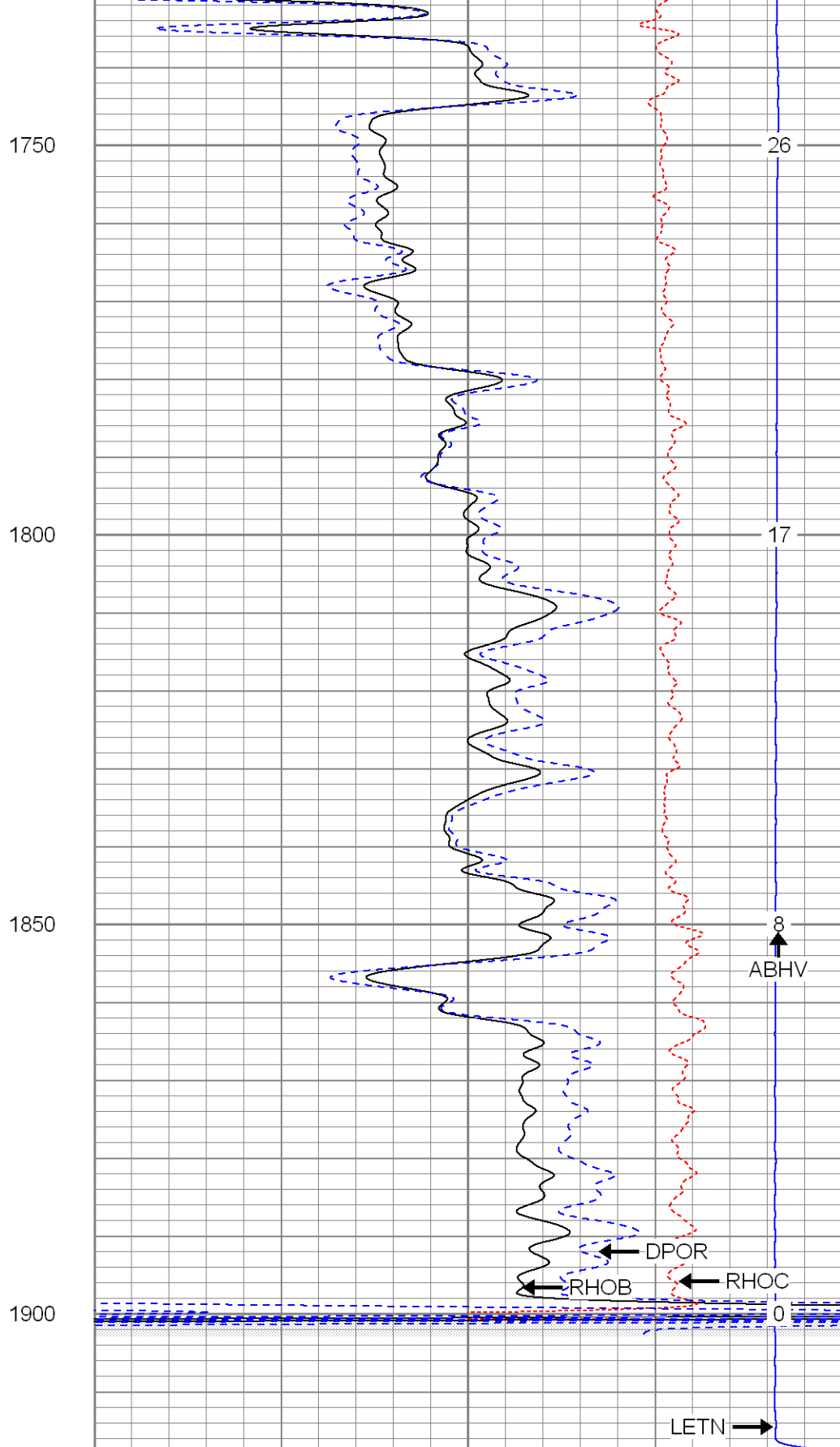
1500







0	GR (GAPI)	200
6	DCAL (in)	16
TBHV (ft3)		



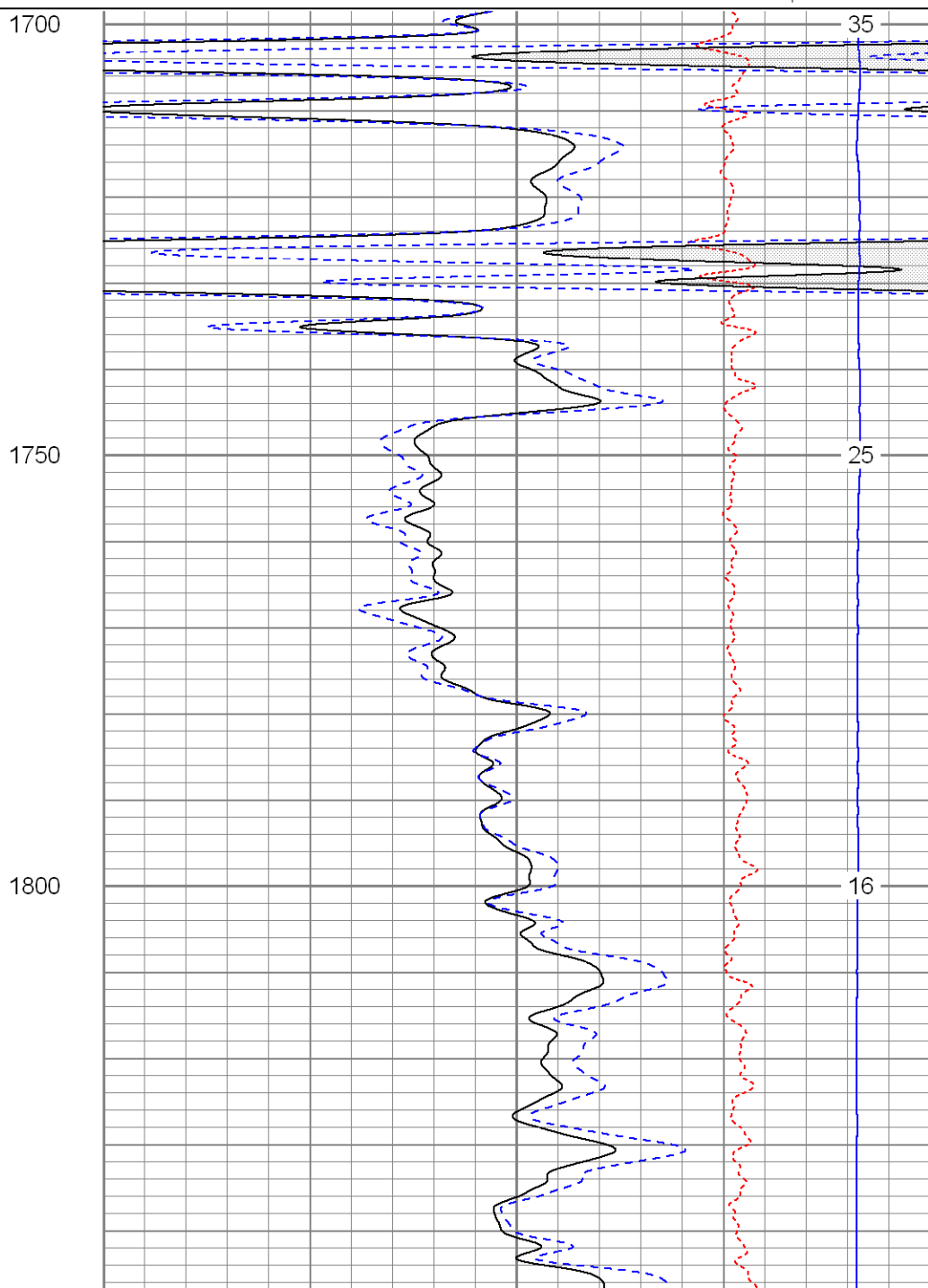
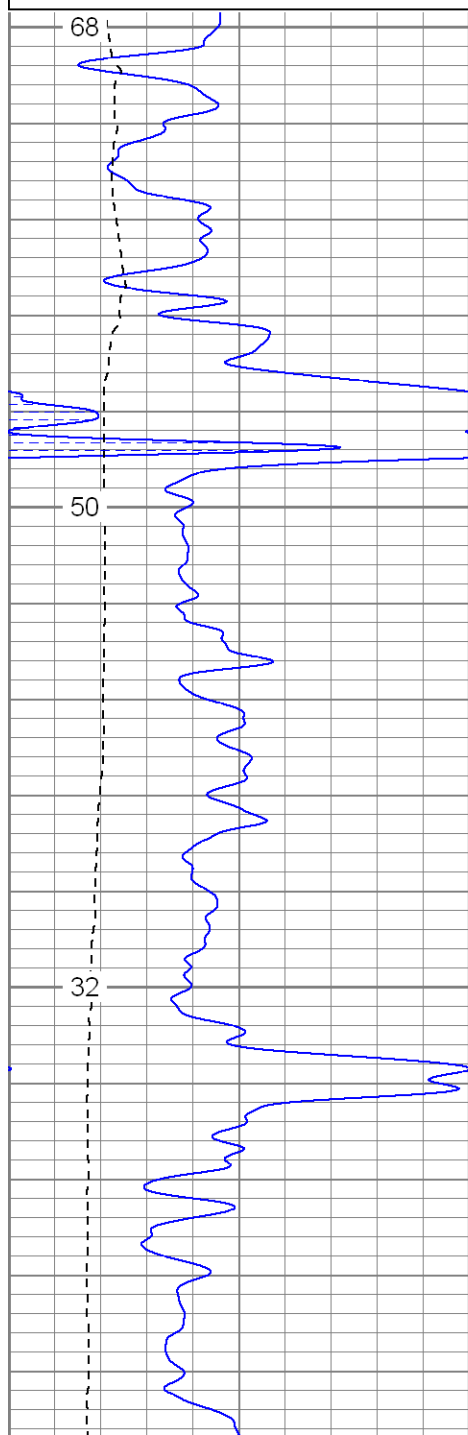
2	RHOB (g/cc)	3
1	RHOB (g/cc)	2
30	DPOR (pu)	-10
-0.5	RHOC (g/cc)	0.5
7000	LTEN (lb)	0
ABHV (ft3)		

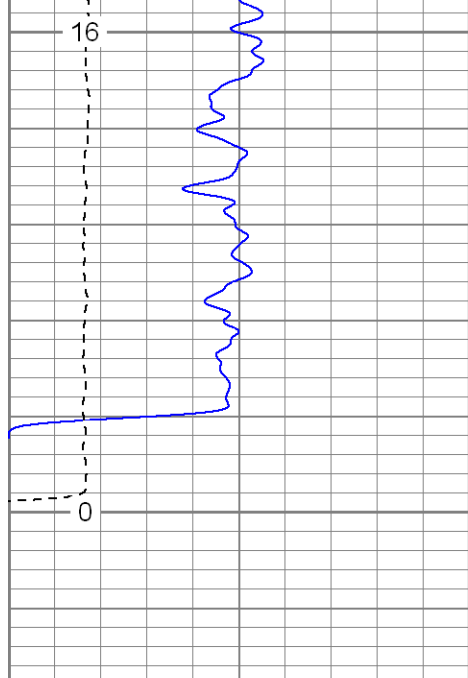
Repeat Section

Database File: fujiyamadi.db
 Dataset Pathname: pass1.2
 Presentation Format: cdl
 Dataset Creation: Thu Dec 17 13:38:31 2009 by Calc Open-Cased 071220
 Charted by: Depth in Feet scaled 1:240

0	GR (GAPI)	200
6	DCAL (in)	16
TBHV (ft3)		

2	RHOB (g/cc)	3
1	RHOB (g/cc)	2
30	DPOR (pu)	-10
-0.5	RHOC (g/cc)	0.5
7000	LTEN (lb)	0
ABHV (ft3)		



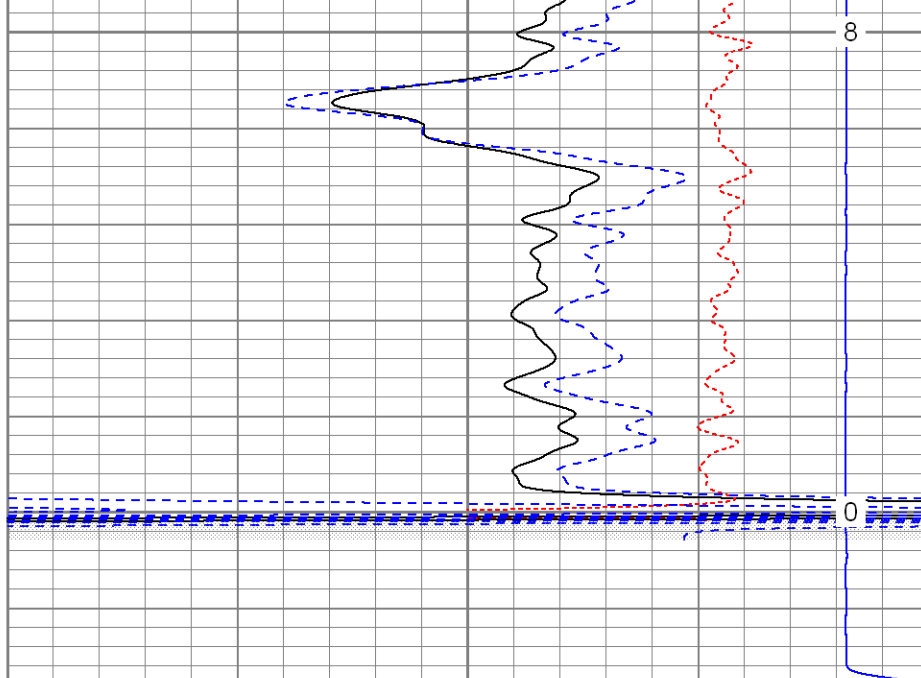


1850

1900

0	GR (GAPI)	200
6	DCAL (in)	16

TBHV (ft3)



2	RHOB (g/cc)	3
1	RHOB (g/cc)	2

30 DPOR (pu) -10

-0.5 RHOCC (g/cc) 0.5

7000 LTEN (lb) 0

ABHV (ft3)

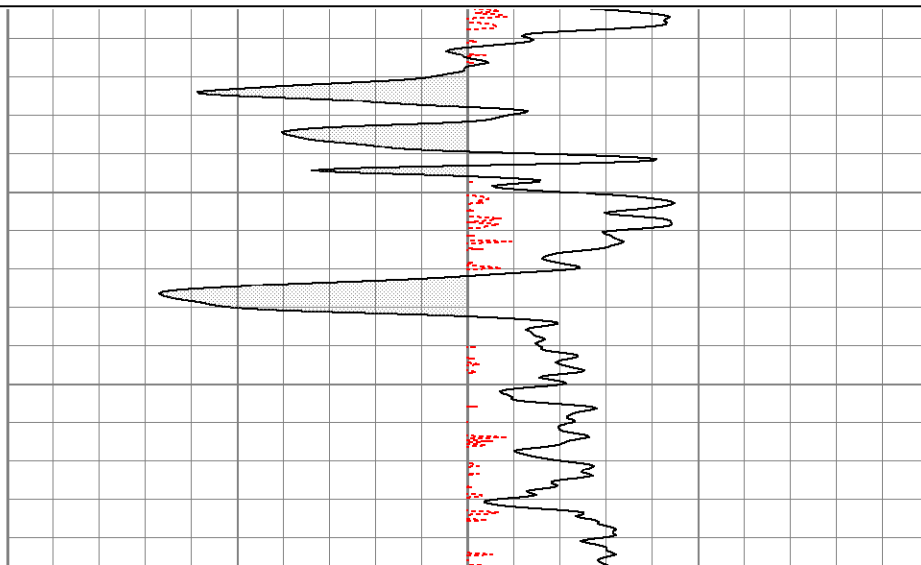
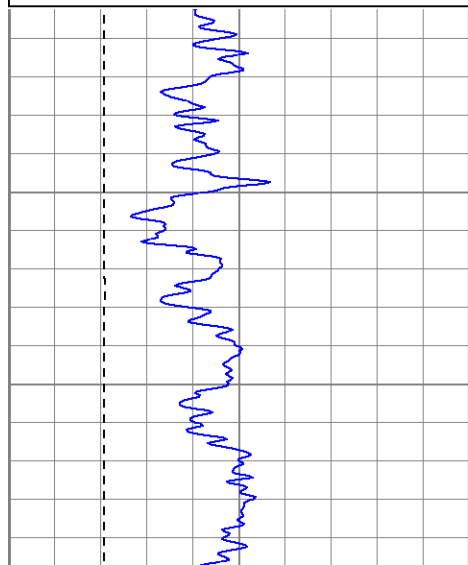


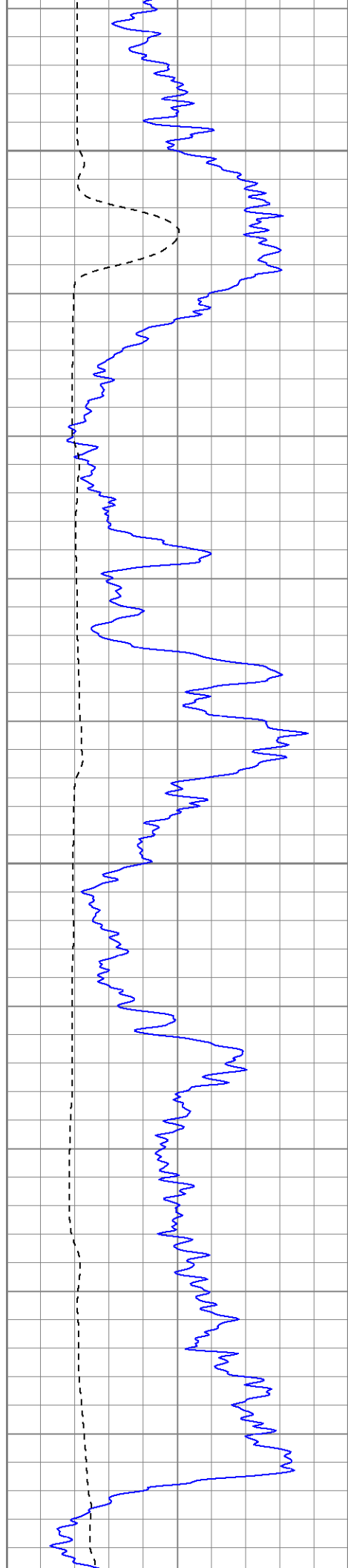
High Resolution Pass

Database File: fujiyamadi.db
 Dataset Pathname: pass2.2hr
 Presentation Format: cdlhr
 Dataset Creation: Thu Dec 17 13:40:40 2009 by Calc Open-Cased 071220
 Charted by: Depth in Feet scaled 1:120

0	GR (GAPI)	200
6	DCAL (in)	16

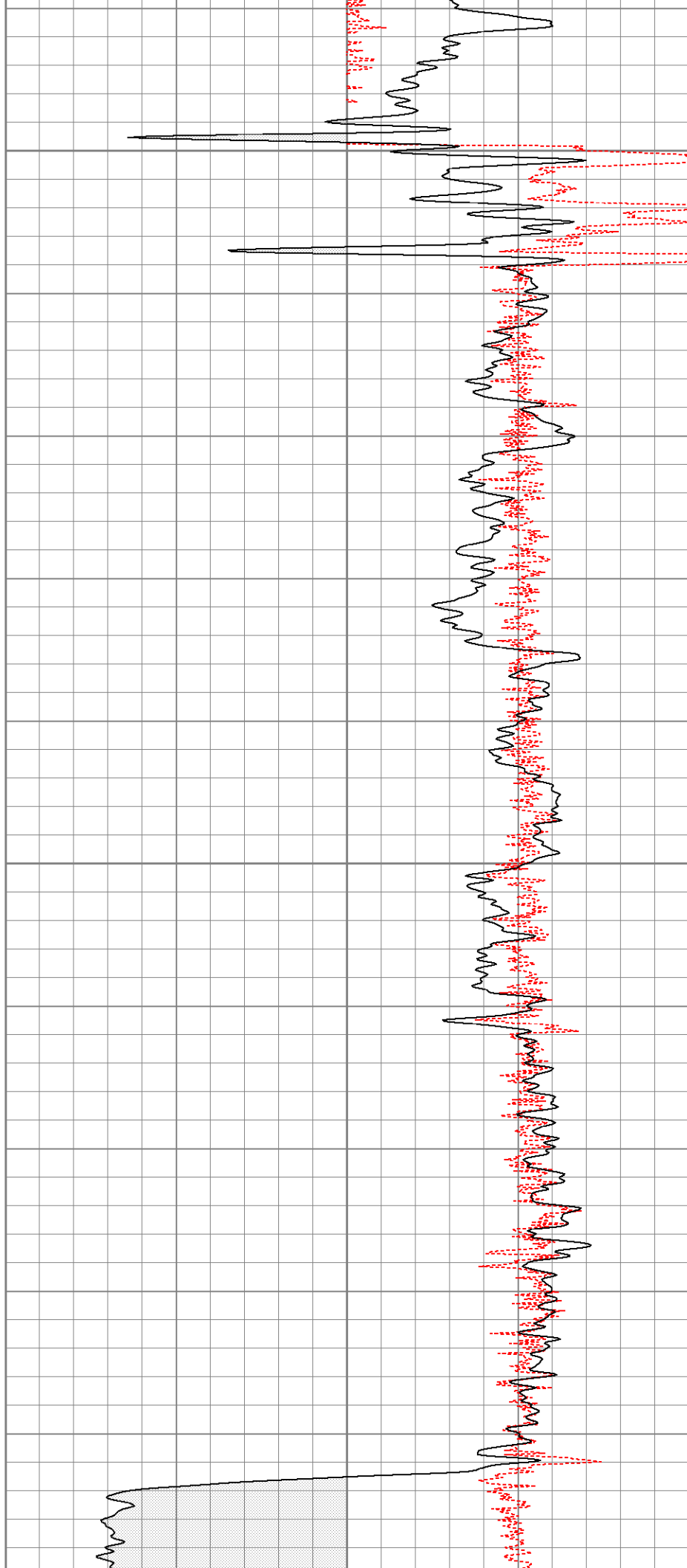
1	RHOB (g/cc)	3
-0.5	RHOCC (g/cc)	0.5





500

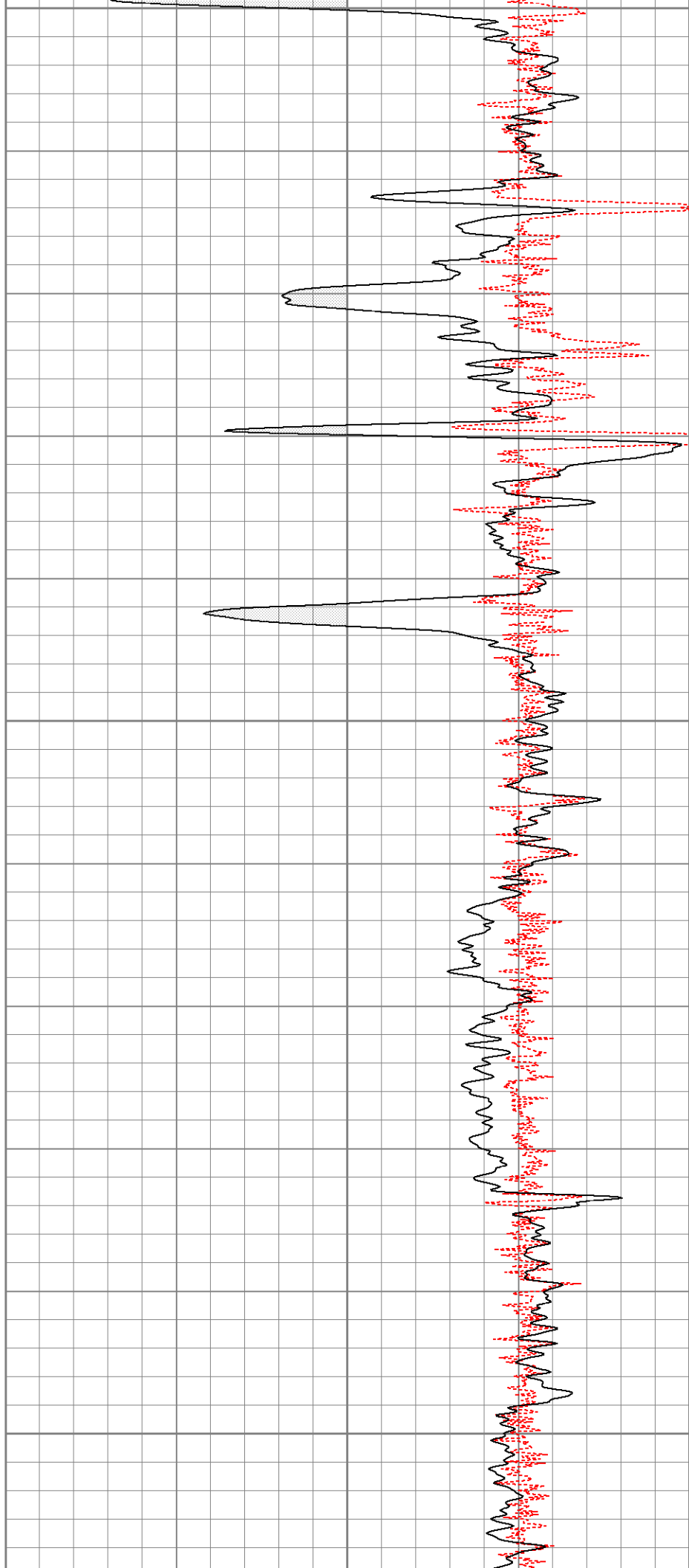
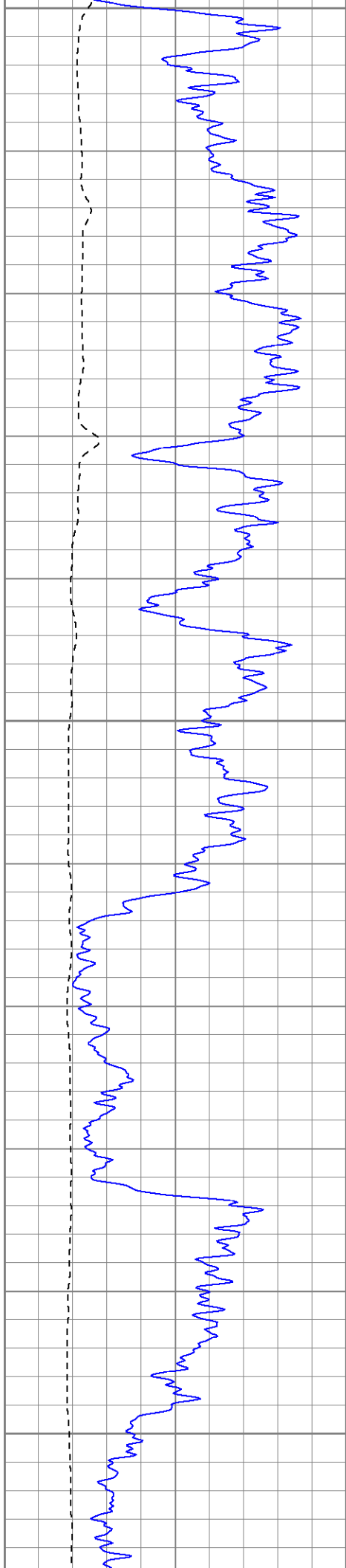
550

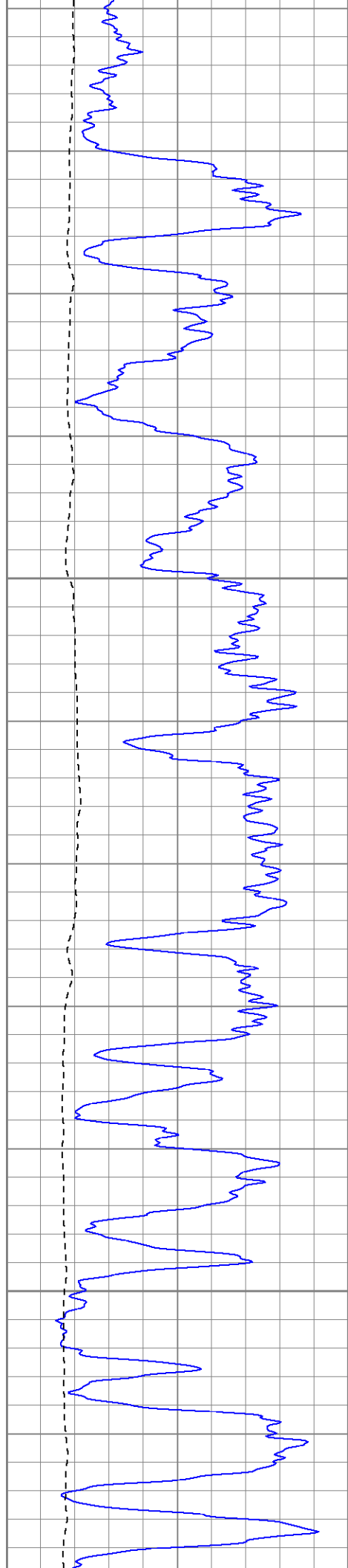


600

650

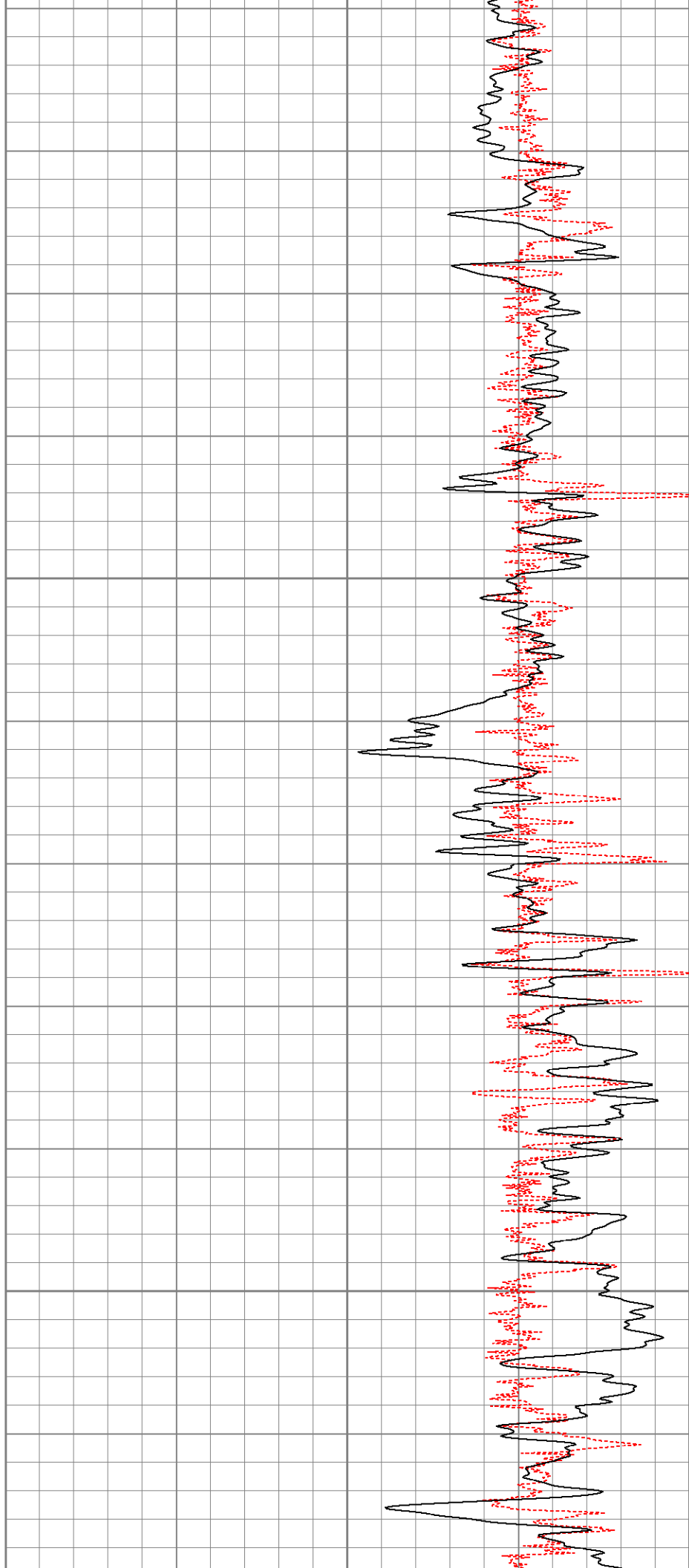
700

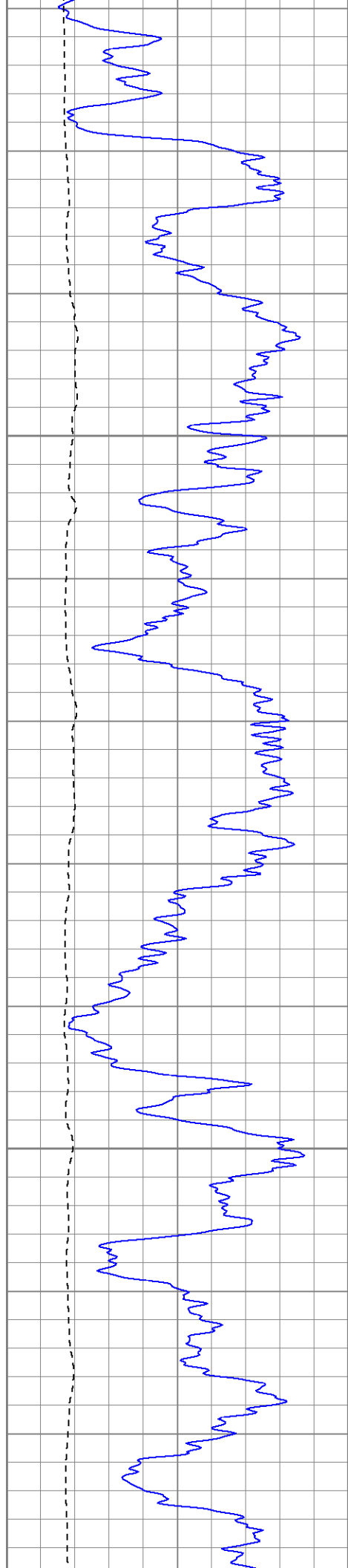




750

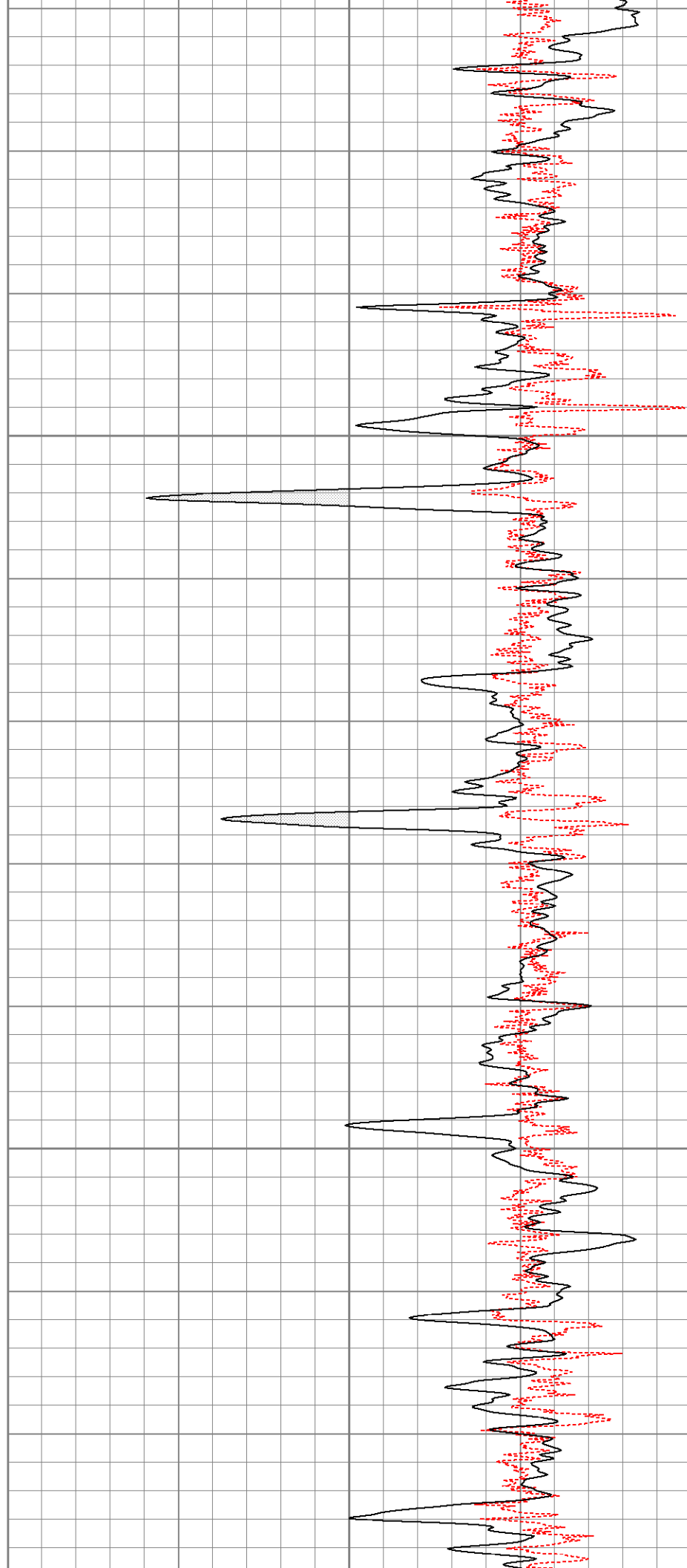
800

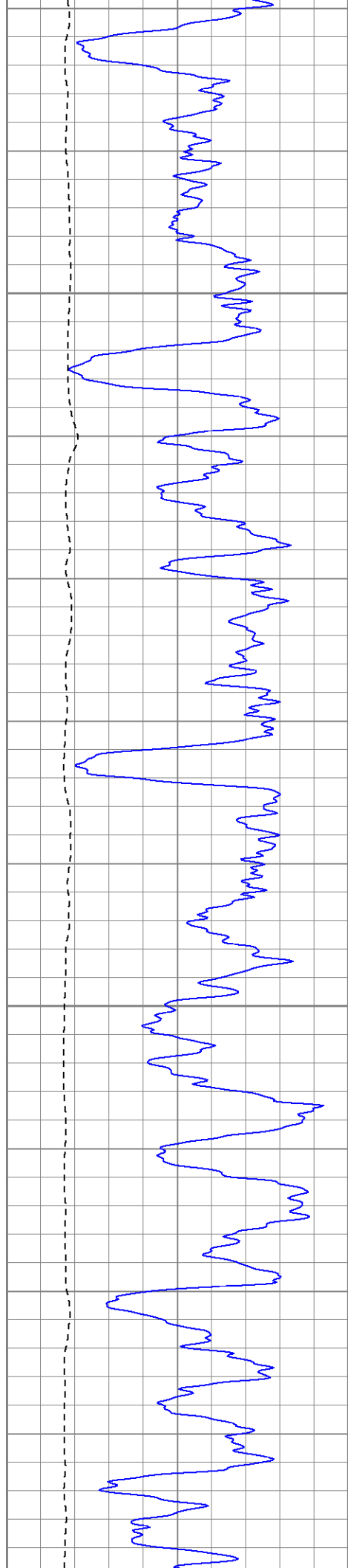




850

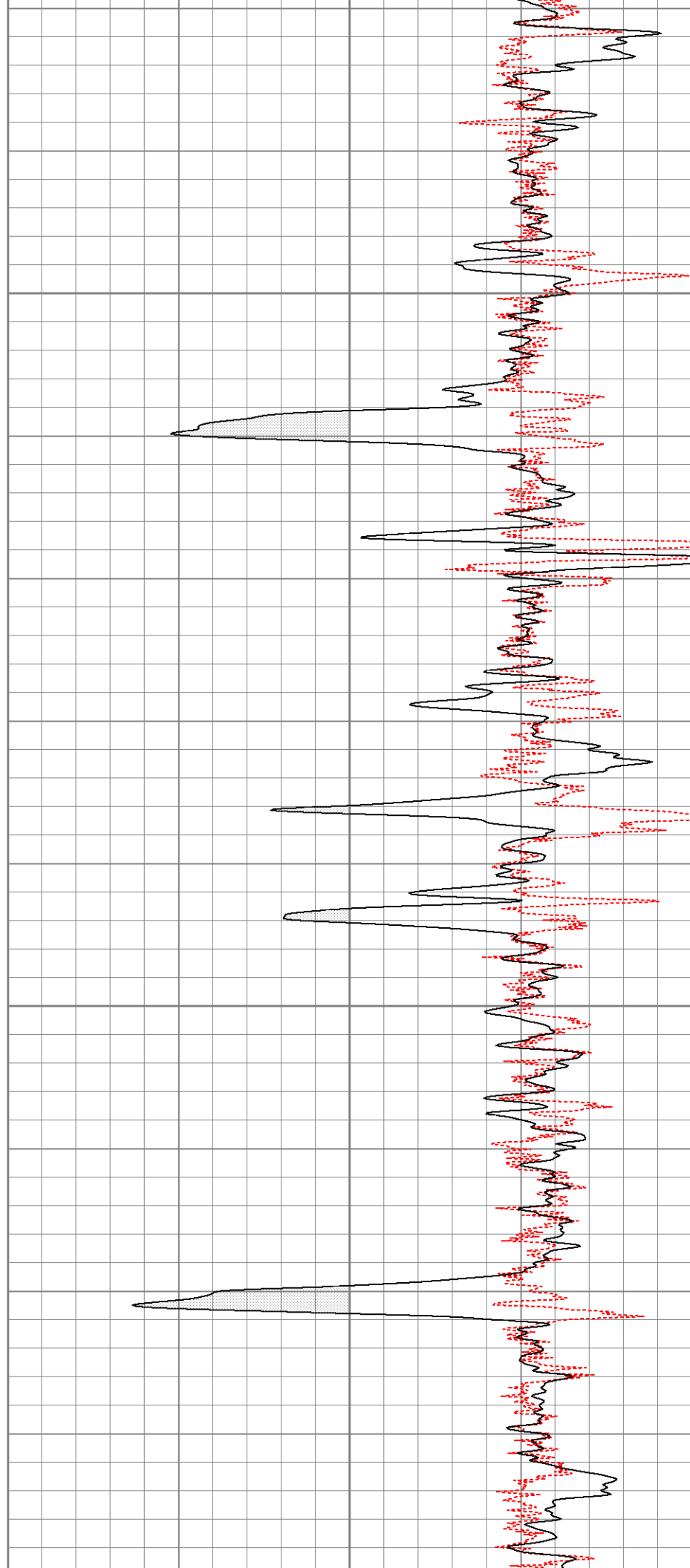
900

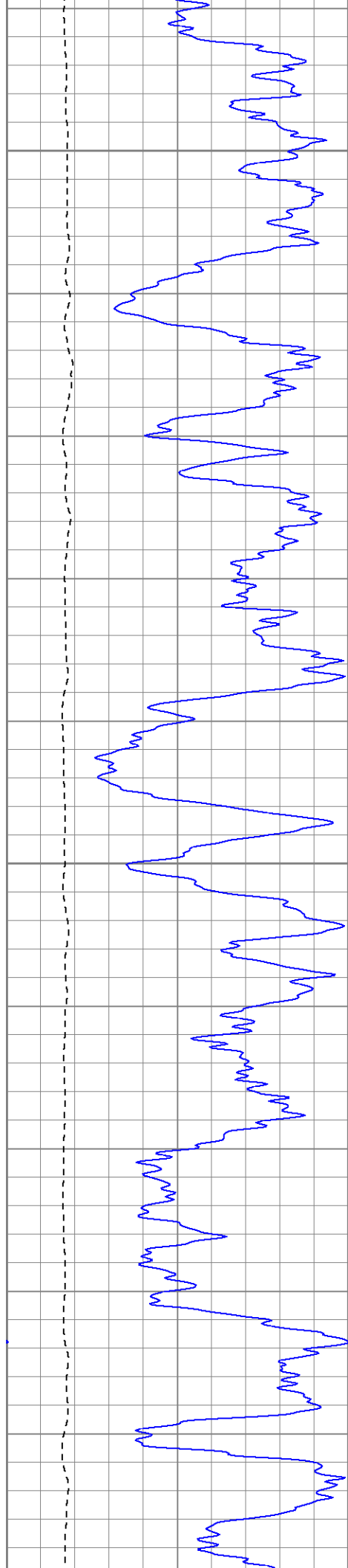




950

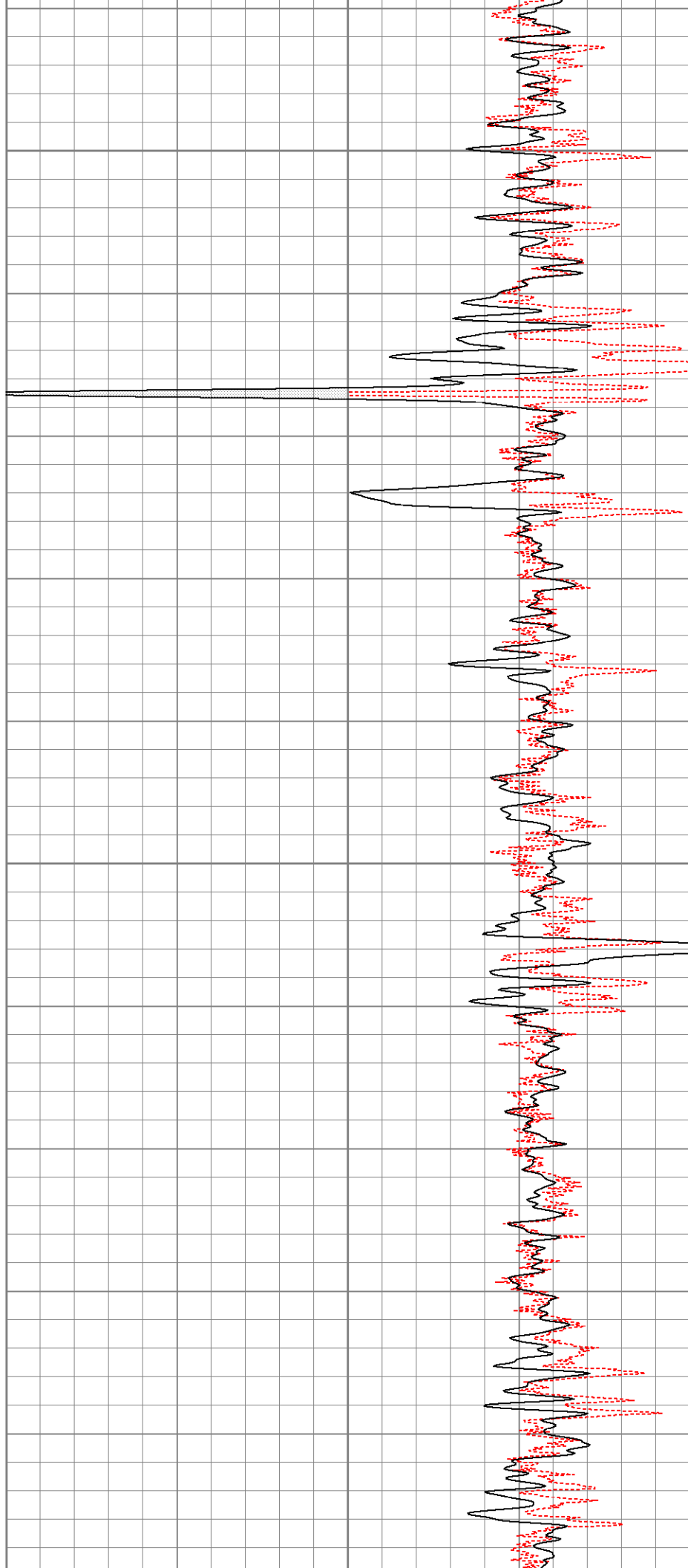
1000

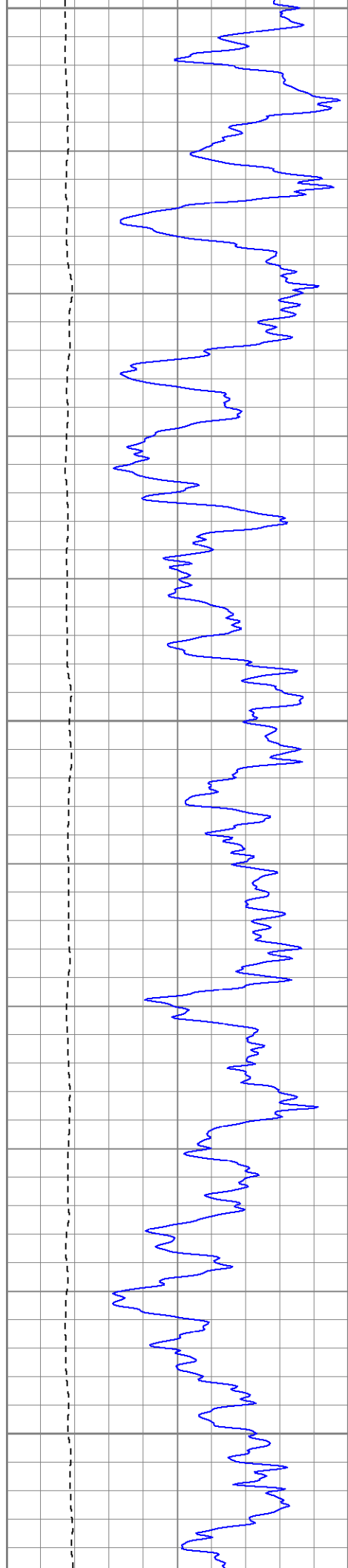




1050

1100

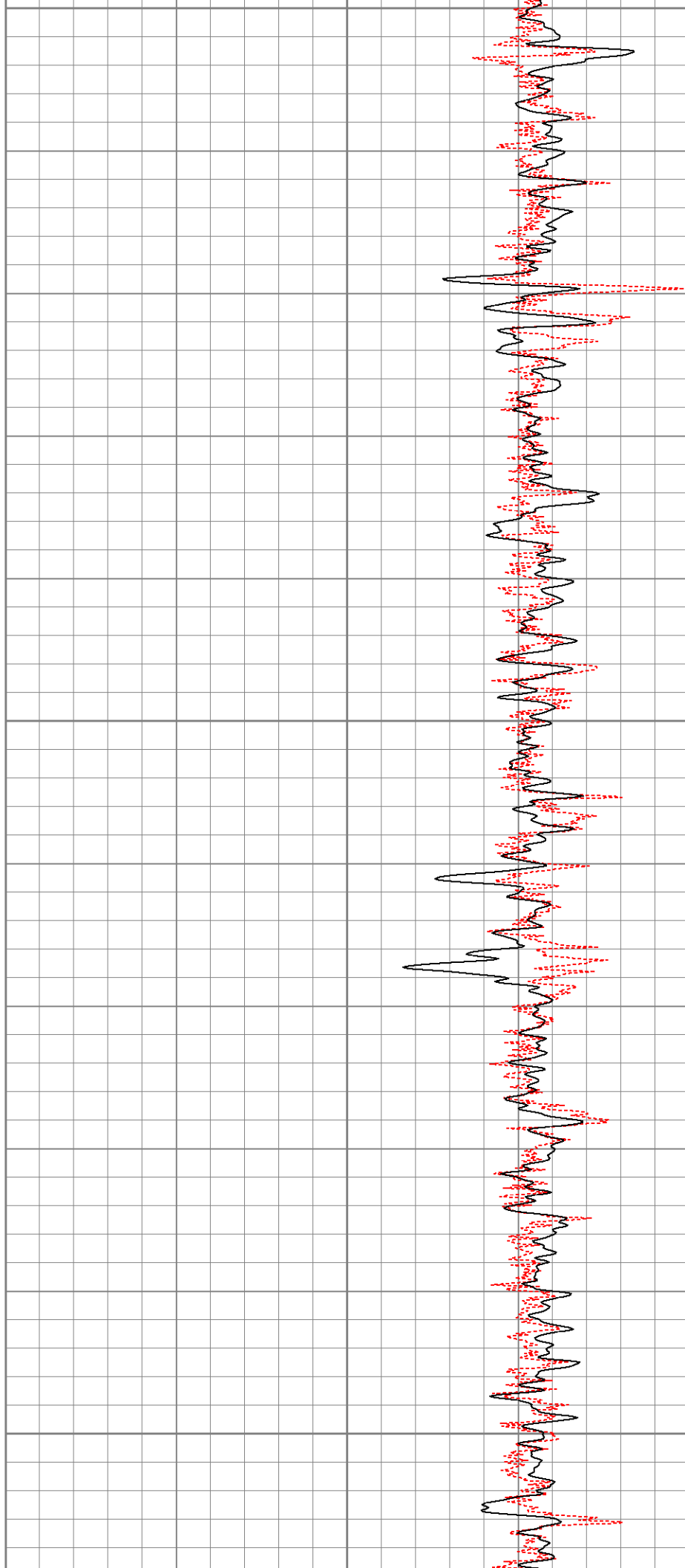


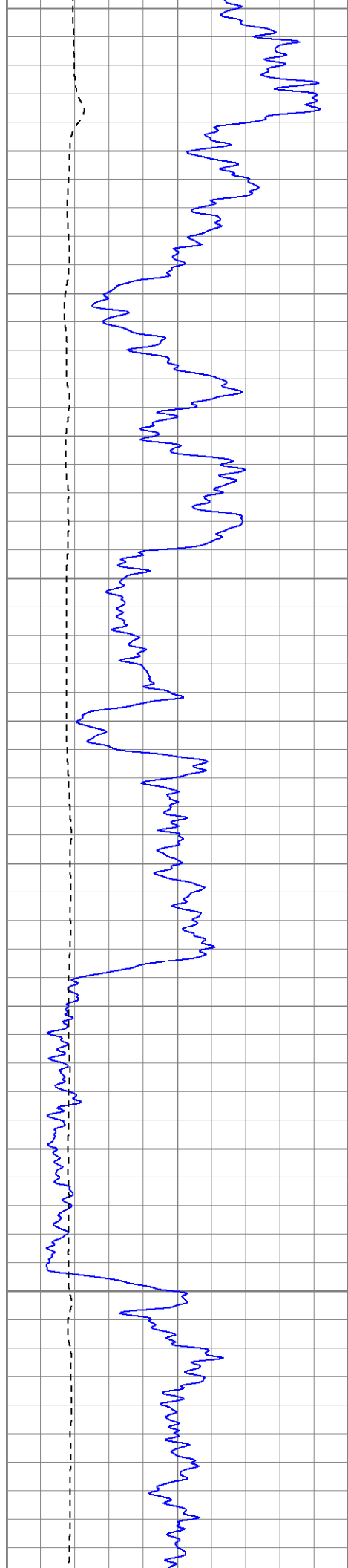


1150

1200

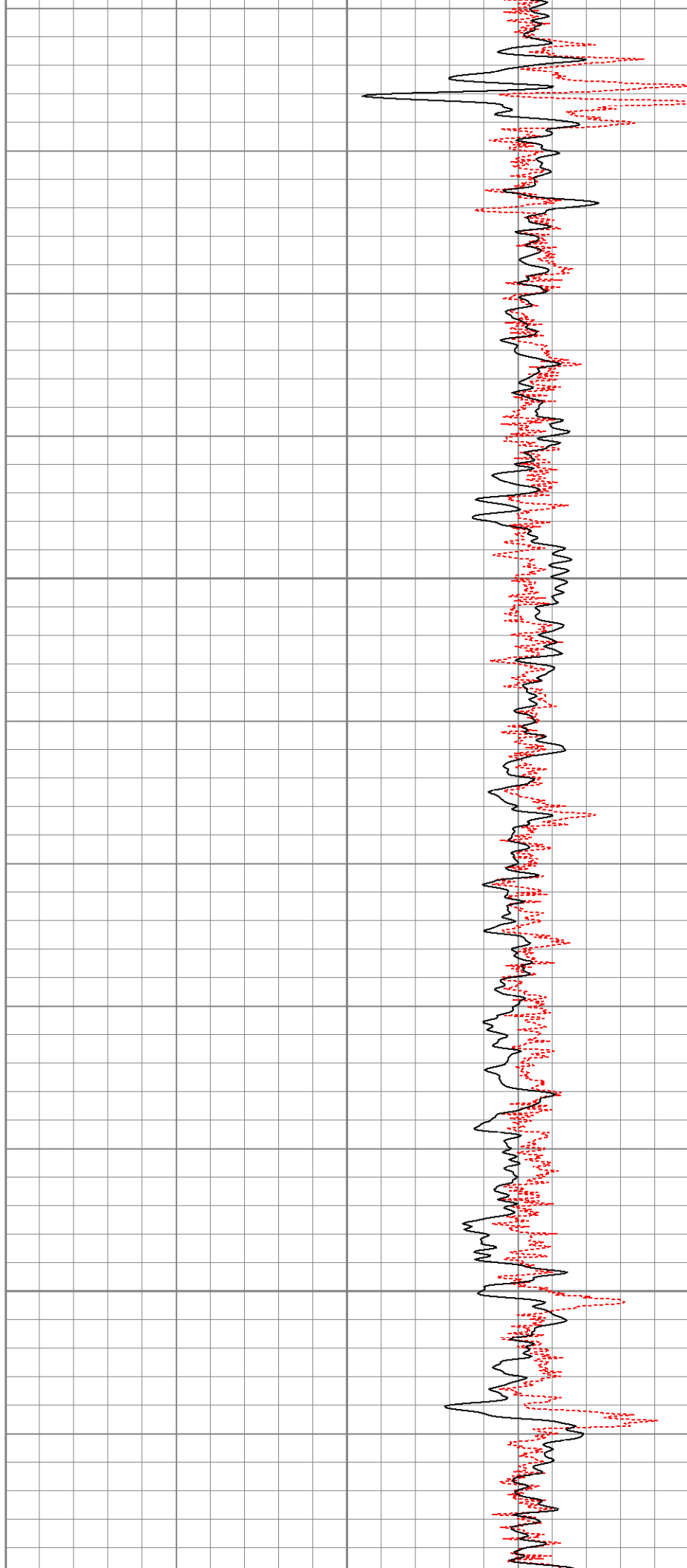
1250

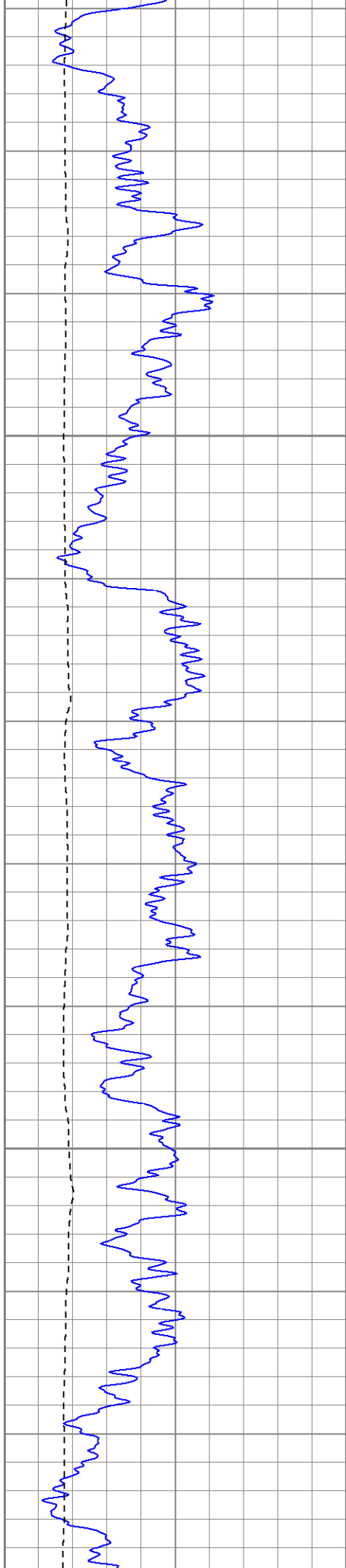




1300

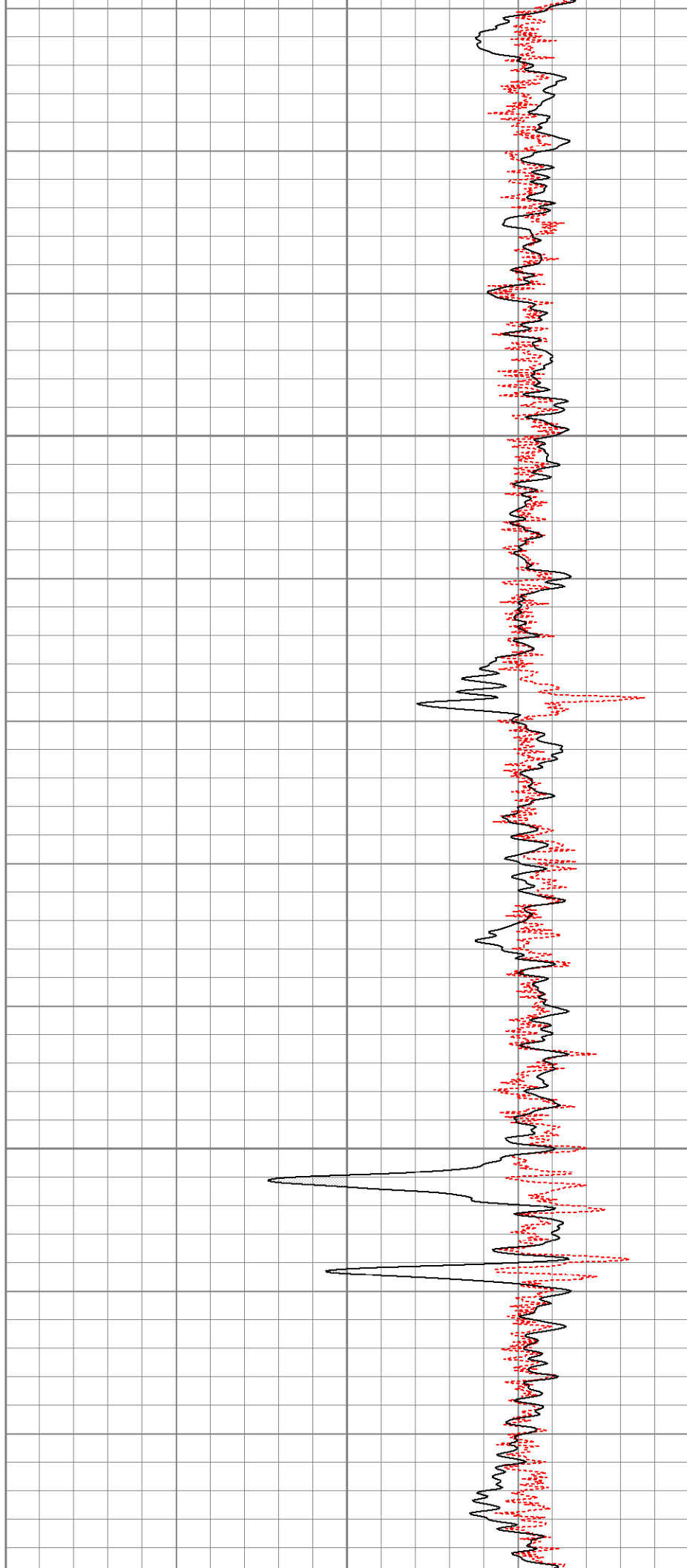
1350

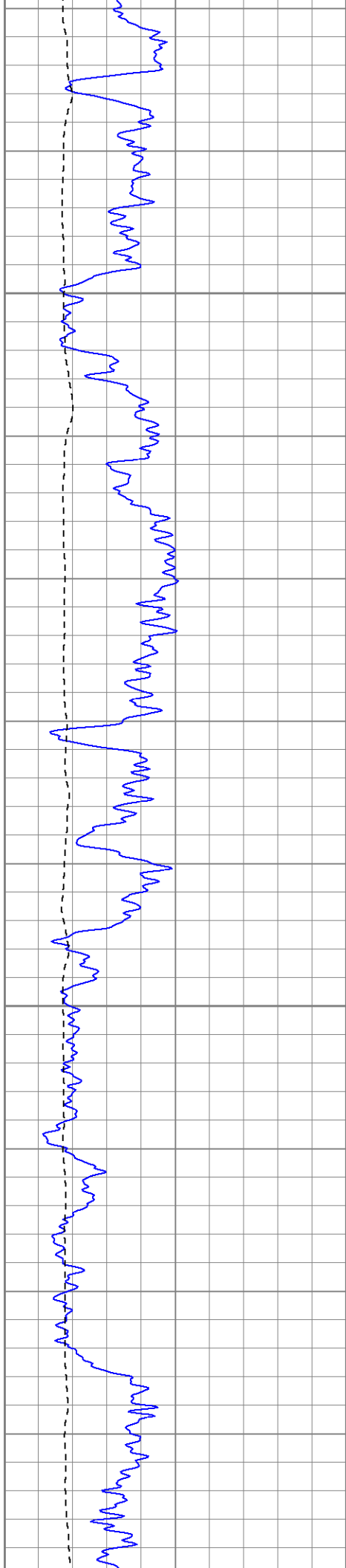




1400

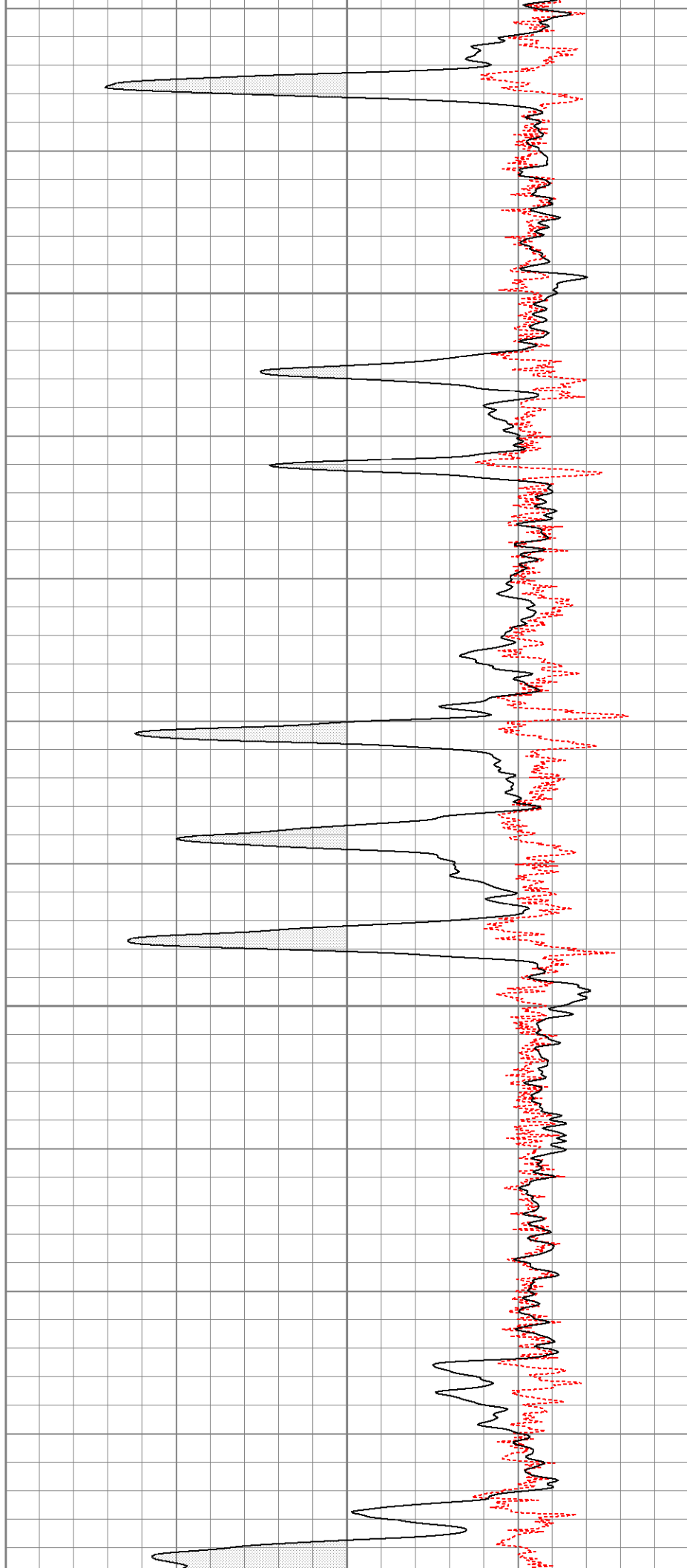
1450

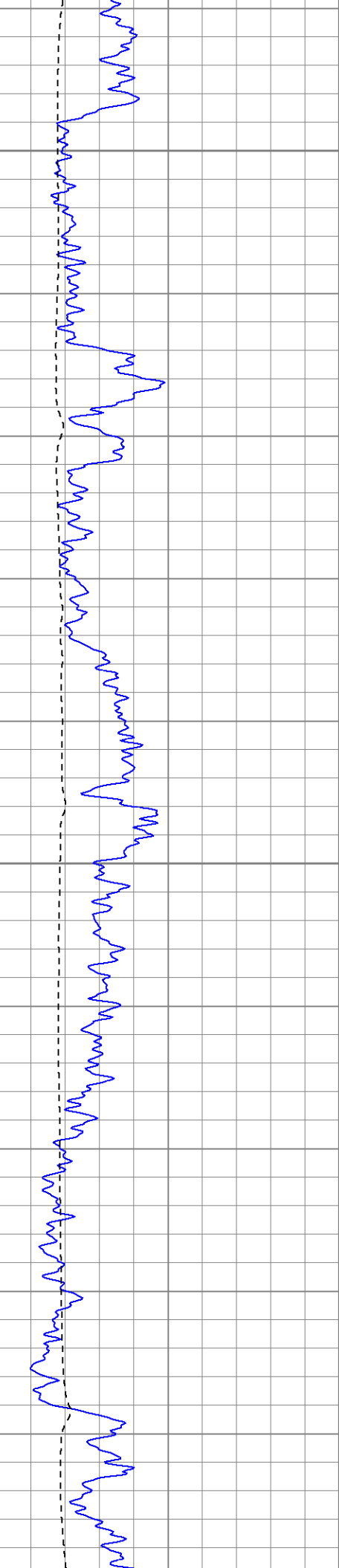




1500

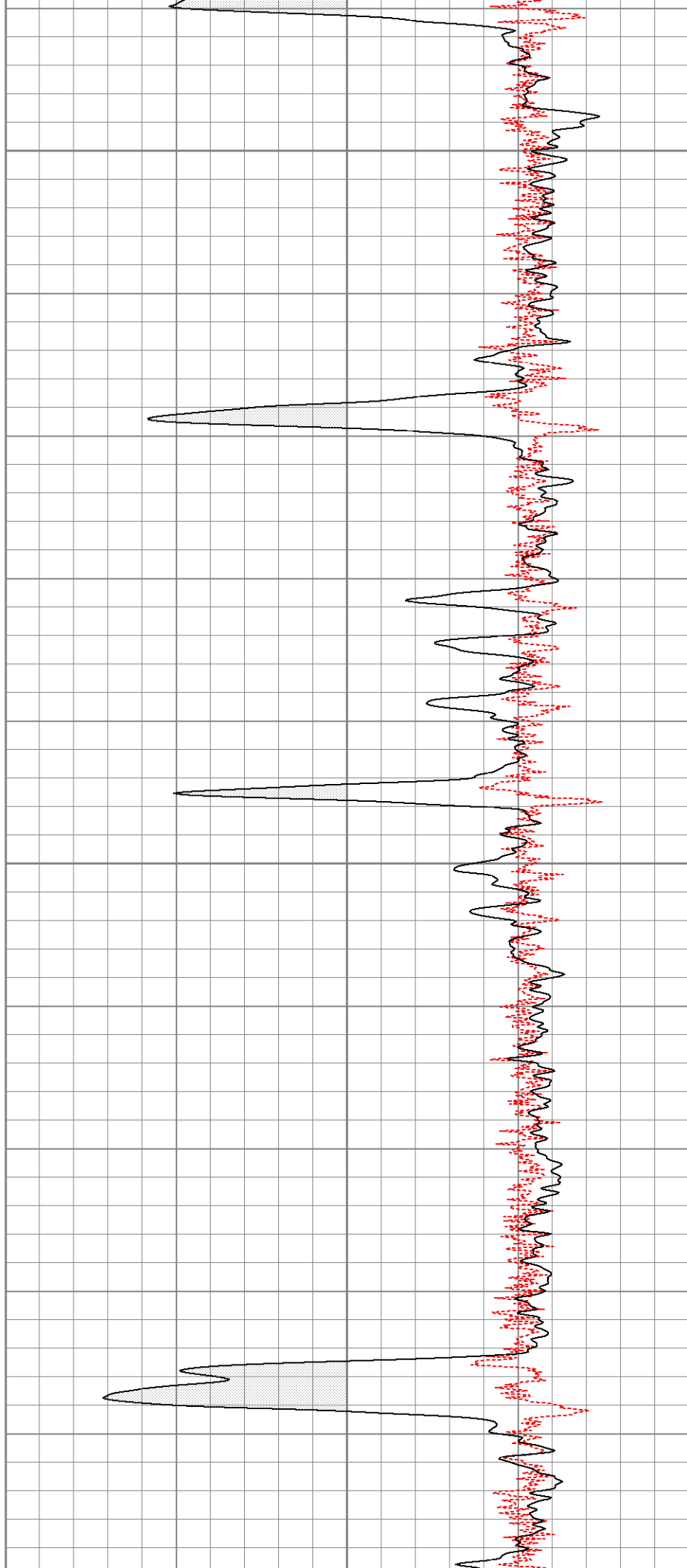
1550





1600

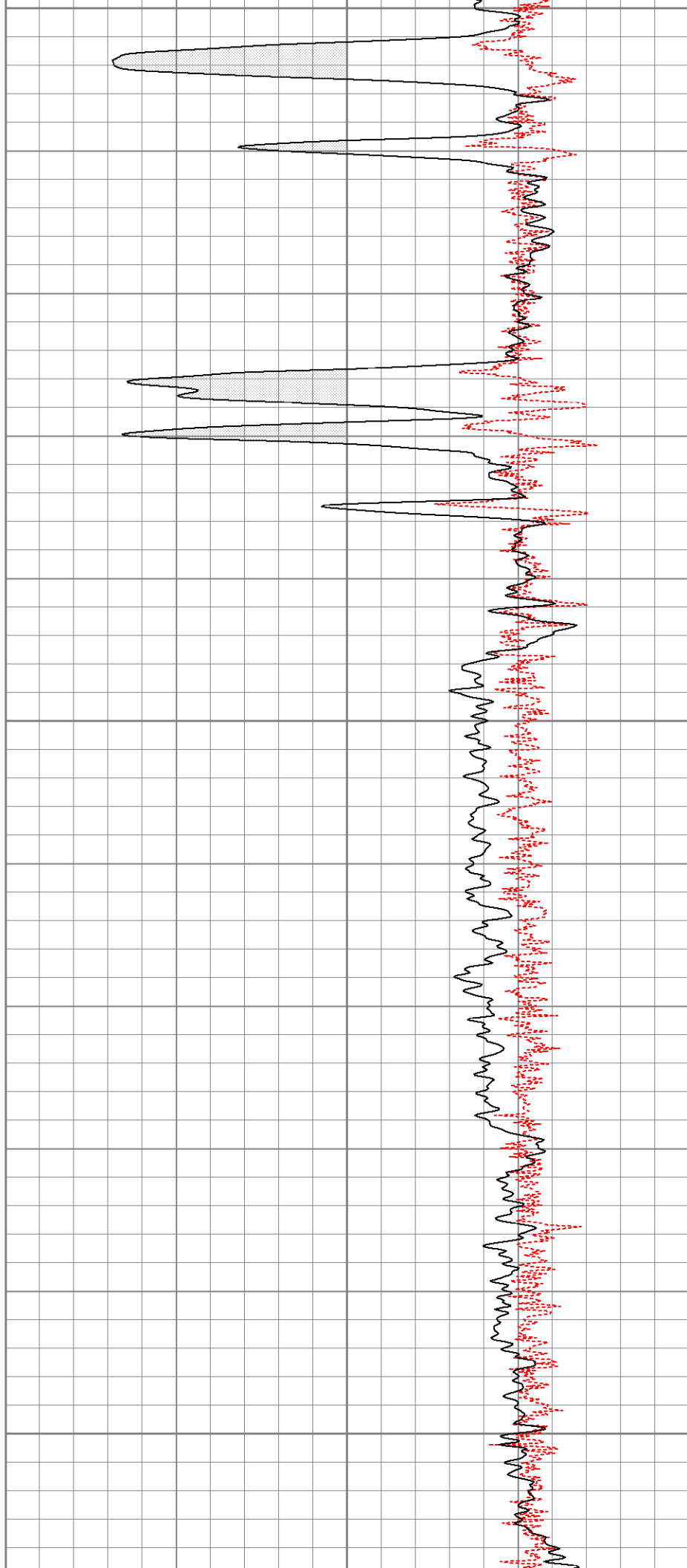
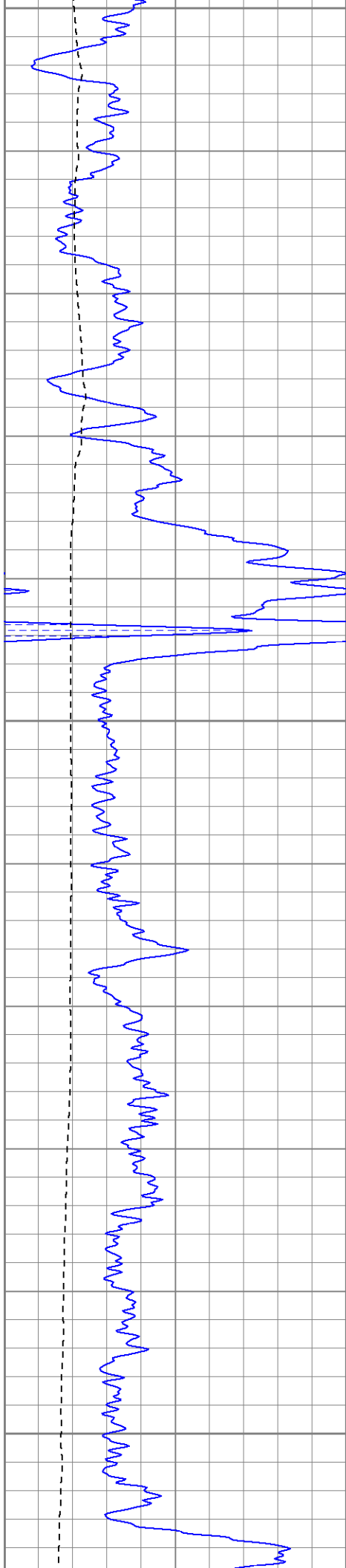
1650

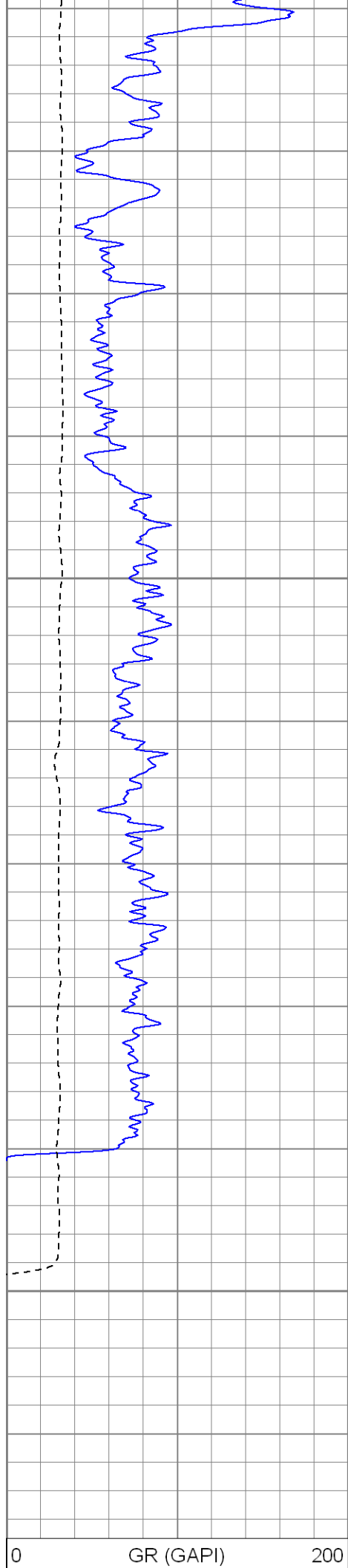


1700

1750

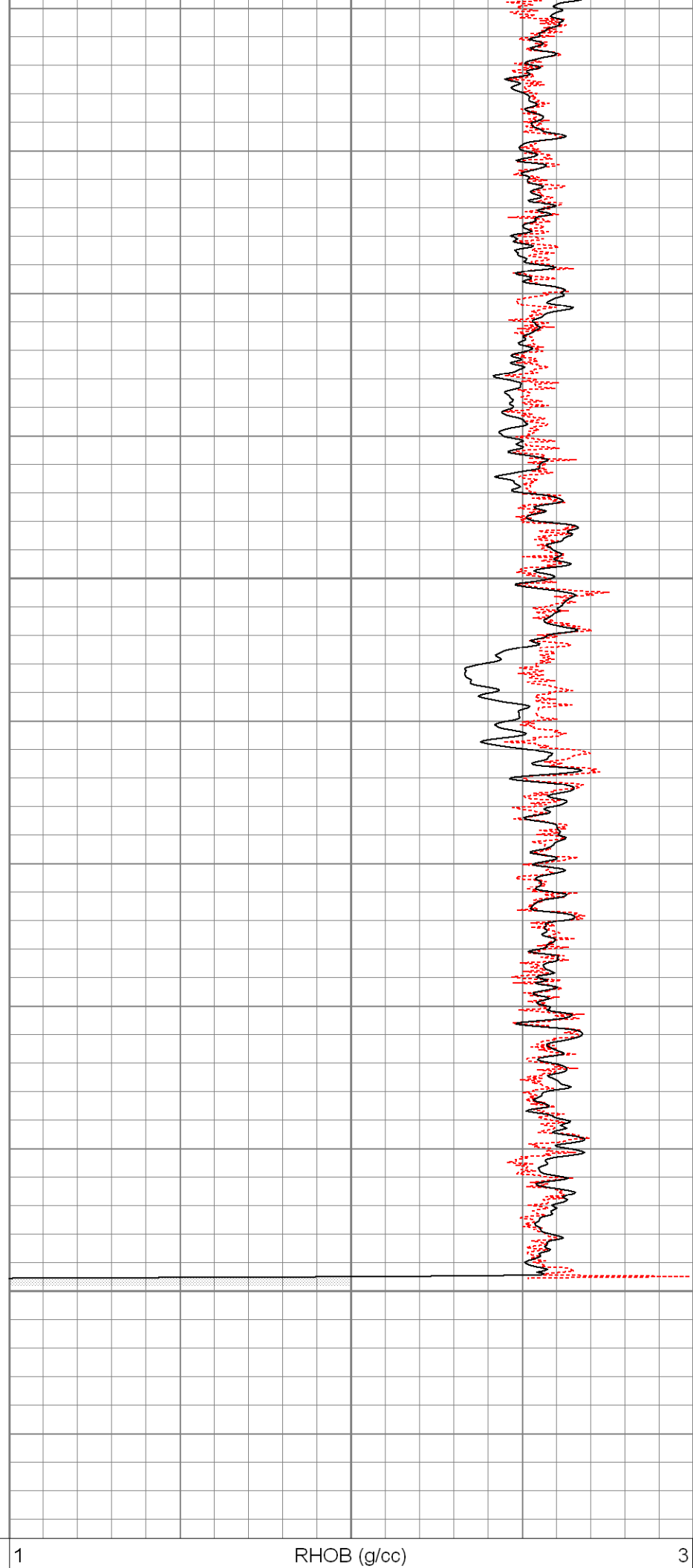
1800





1850

1900



6	DCAL (in)	16	-0.5	RHOC (g/cc)	0.5
---	-----------	----	------	-------------	-----

Calibration Report					
Database File:	fujiyamadi.db				
Dataset Pathname:	pass2				
Dataset Creation:	Thu Dec 17 09:06:24 2009 by Log Open-Cased 071220				

Induction Tool Calibration Report

Serial Number:	121
Tool Model:	GL121
Downhole Cal Performed:	Mon Dec 07 06:31:58 2009
Surface Cal Performed:	Fri Dec 04 08:51:07 2009
After Survey Verification Performed:	

Surface Calibration:	Air	Loop	
Conductivity Reference:	0.000	450.000	mmho
Conductivity Reading:	0.005	0.626	V
Internal Reference:	Zero	Cal	
Conductivity Reference:	0.000	500.000	mmho
Conductivity Reading:	0.009	0.631	V

Downhole Calibration:	Internal Zero	Internal Cal	
Conductivity Reference:	3.282	453.999	mmho
Conductivity Reading:	-1.663	456.644	V
Short Normal Reference:	0.000	17.000	Ohm-m
Short Normal Reading:	0.016	0.201	V

Results:	Gain	Offset
Loop Conductivity:	724.756	-3.402
Downhole Correction:	0.983	4.918
Short Normal Resistivity:	91.790	-1.449

Compensated Density Calibration Report
--

Serial-Model:	2501DHT-DHT
Source / Verifier:	/
Master Calibration Performed:	Fri Dec 04 08:50:44 2009

Master Calibration					
	Density		Far Detector	Near Detector	
Magnesium	1.710	g/cc	767.26	303.43	cps
Aluminum	2.590	g/cc	171.91	210.81	cps
Spine Angle = 76.32			Density/Spine Ratio = 0.572		
	Size		Reading		
Small Ring	8.00	in	6196.63		
Large Ring	14.00	in	10494.70		

Gamma Ray Calibration Report

Gamma Ray Calibration Report		
Serial Number:	2001	
Tool Model:	OH	
Performed:	Fri Dec 04 08:49:38 2009	
Calibrator Value:	1.0	GAPI
Background Reading:	0.0	cps
Calibrator Reading:	1.0	cps

Calibrator Reading.





1.0

023

Sensitivity:

0.2500

GAPI/cps

Sensor	Offset (ft)	Schematic	Description	Len (ft)	OD (in)	Wt (lb)
GR	26.85		None	0.75	1.50	5.00
			GR-OH (2001) 2001	3.56	3.25	40.00
LSD DCAL SSD HEADVOLT	18.31		CDL-DHT (2501DHT) Digital High Temp CDL Tool	9.69	4.00	201.00
	18.02					
	17.77					
	16.00					
DIC	6.89		IEL-GL121 (121)	16.00	4.00	178.00
SP	1.50					
SN	1.00					
Dataset: fujiyamadi.db: field/well/run1/pass1 Total Length: 30.00 ft Total Weight: 424.00 lb O.D. 4.00 in						