



# SINGLE INDUCTION LOG

WIRELINE

Company	Pioneer Natural Resources	Company	Pioneer Natural Resources
Well	Lickity Split 43-12	Well	Lickity Split 43-12
Field	Purgatorie River	Field	Purgatorie River
County	Las Animas	County	Las Animas
State	CO	State	CO
Location:	API # : 05 071 09702 00 1623' FSL & 372' FEL	Other Services	CDL
Permanent Datum	SEC 12 TWP 32S RGE 67W	Elevation	
Log Measured From	Ground Level	K.B. 7552'	
Drilling Measured From	Kelly Bushing 4' Above G.L.	D.F. -----	
	Kelly Bushing	G.L. 7548'	
Date	12/12/09		
Run Number	one		
Depth Driller	2800'		
Depth Logger	2792'		
Bottom Logged Interval	2790'		
Top Log Interval	380'		
Casing Driller	417'		
Casing Logger	415'		
Bit Size	7 7/8"		
Type Fluid in Hole	water		
Density / Viscosity	///		
pH / Fluid Loss	///		
Source of Sample	///		
Rm @ Meas. Temp	///		
Rmf @ Meas. Temp	///		
Rmc @ Meas. Temp	///		
Source of Rmf / Rmc	///		
Rm @ BHT	///		
Time Circulation Stopped	9:00 p.m.		
Time Logger on Bottom	3:20 a.m.		
Maximum Recorded Temperature	///		
Equipment Number	697		
Location	Trinidad		
Recorded By	Worley		
Witnessed By	Mr. Vigil		

<<< Fold Here >>>

All interpretations are opinions based on inferences from electrical or other measurements and we cannot and do not guarantee the accuracy or correctness of any interpretation, and we shall not, except in the case of gross or willful negligence on our part, be liable or responsible for any loss, costs, damages, or expenses incurred or sustained by anyone resulting from any interpretation made by any of our officers, agents or employees. These interpretations are also subject to our general terms and conditions set out in our current Price Schedule.

## Comments

I-25 to Aguilar, go past gravel pit to Sarcillo cut off, go left, second left off county road, stay left to location.

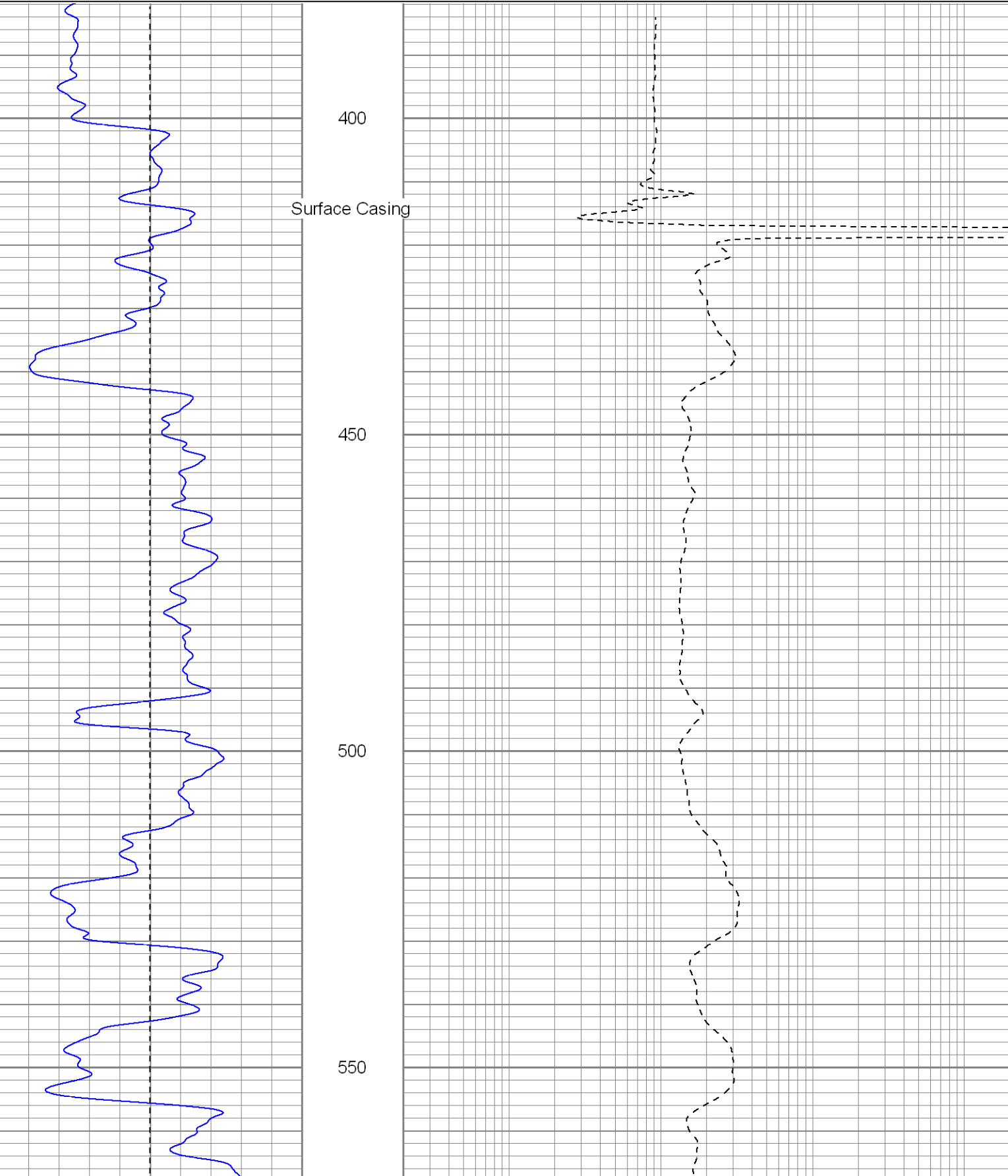


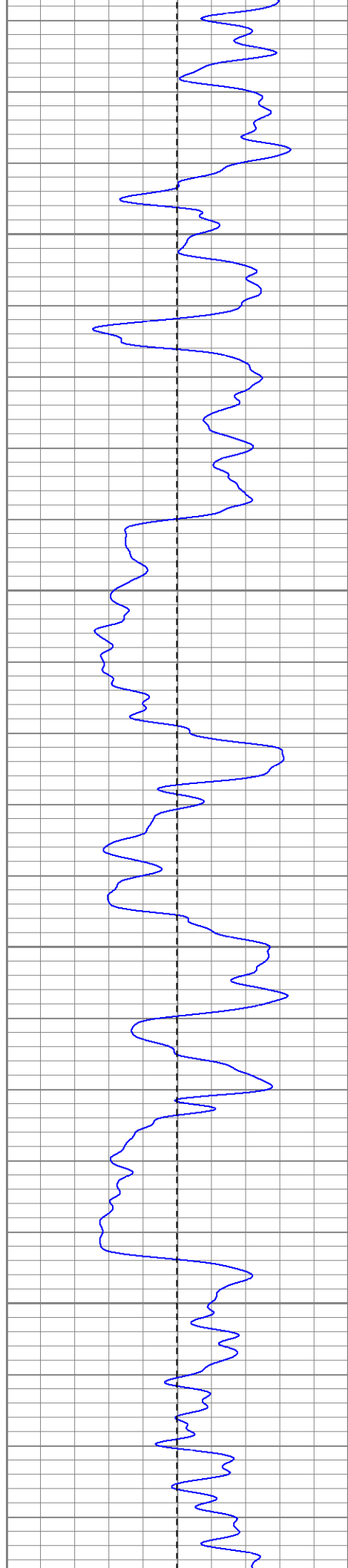
# Main Pass

Database File: lickitysplitdi.db  
Dataset Pathname: pass2.1  
Presentation Format: iel  
Dataset Creation: Mon Dec 14 08:27:04 2009 by Calc Open-Cased 071220  
Charted by: Depth in Feet scaled 1:240

0	GR (GAPI)	200
-100	SP (mV)	100

0.2	DIR (Ohm-m)	2000
0.2	SN (Ohm-m)	2000



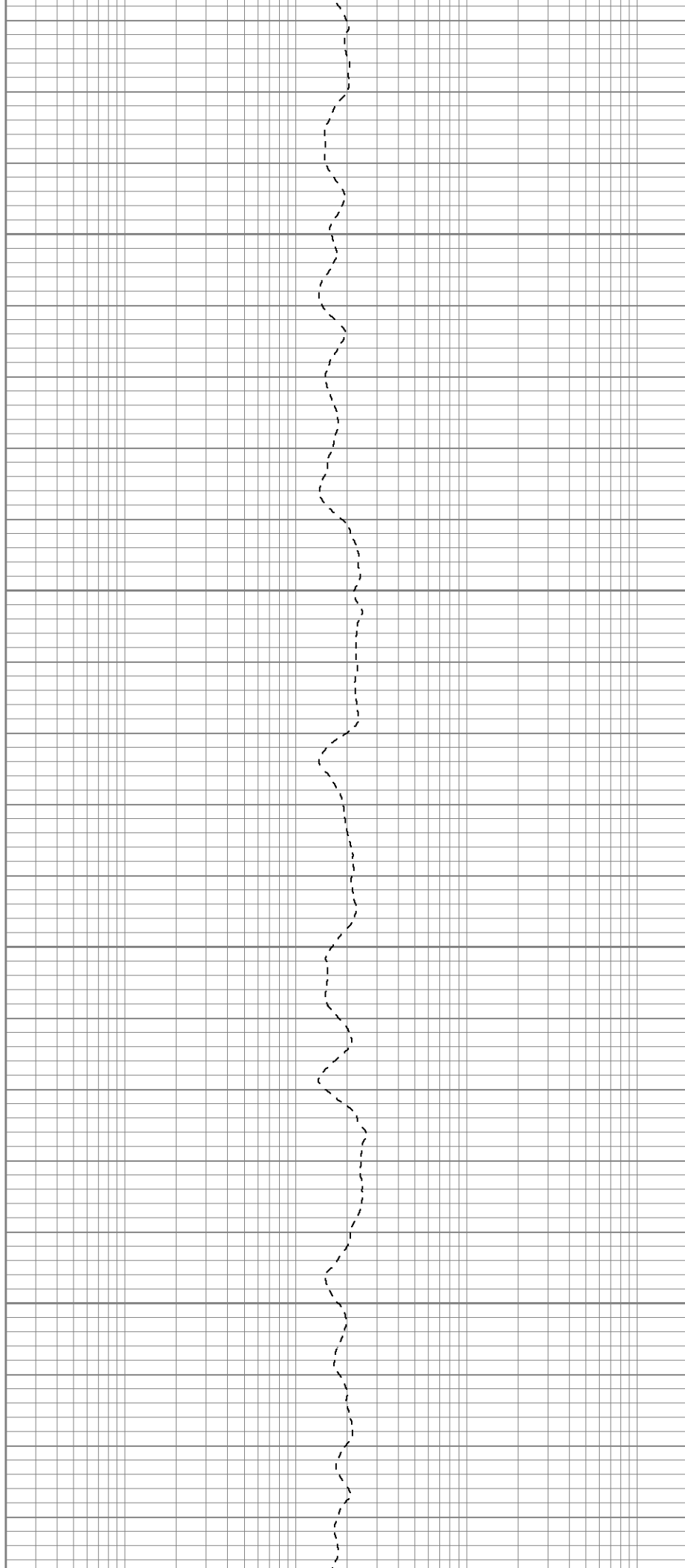


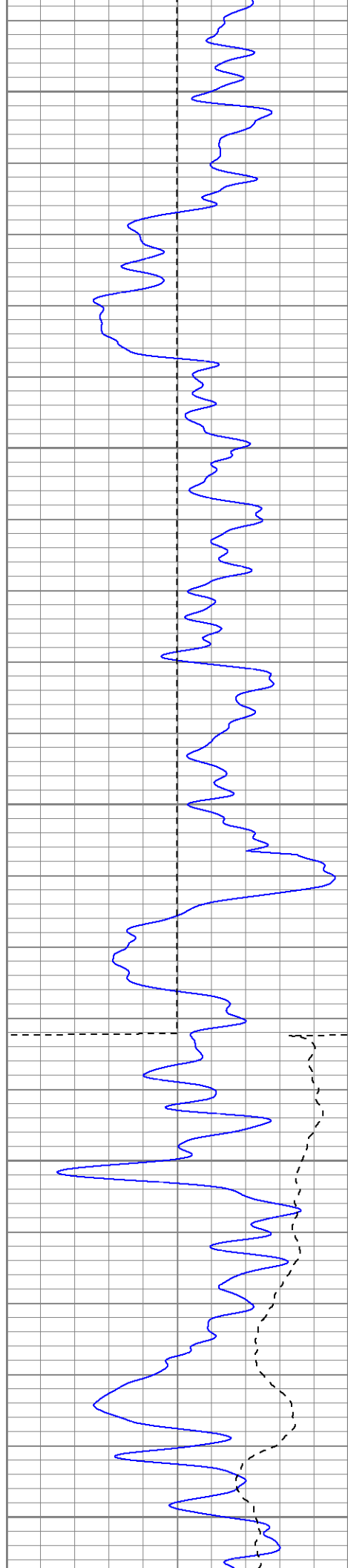
600

650

700

750





800

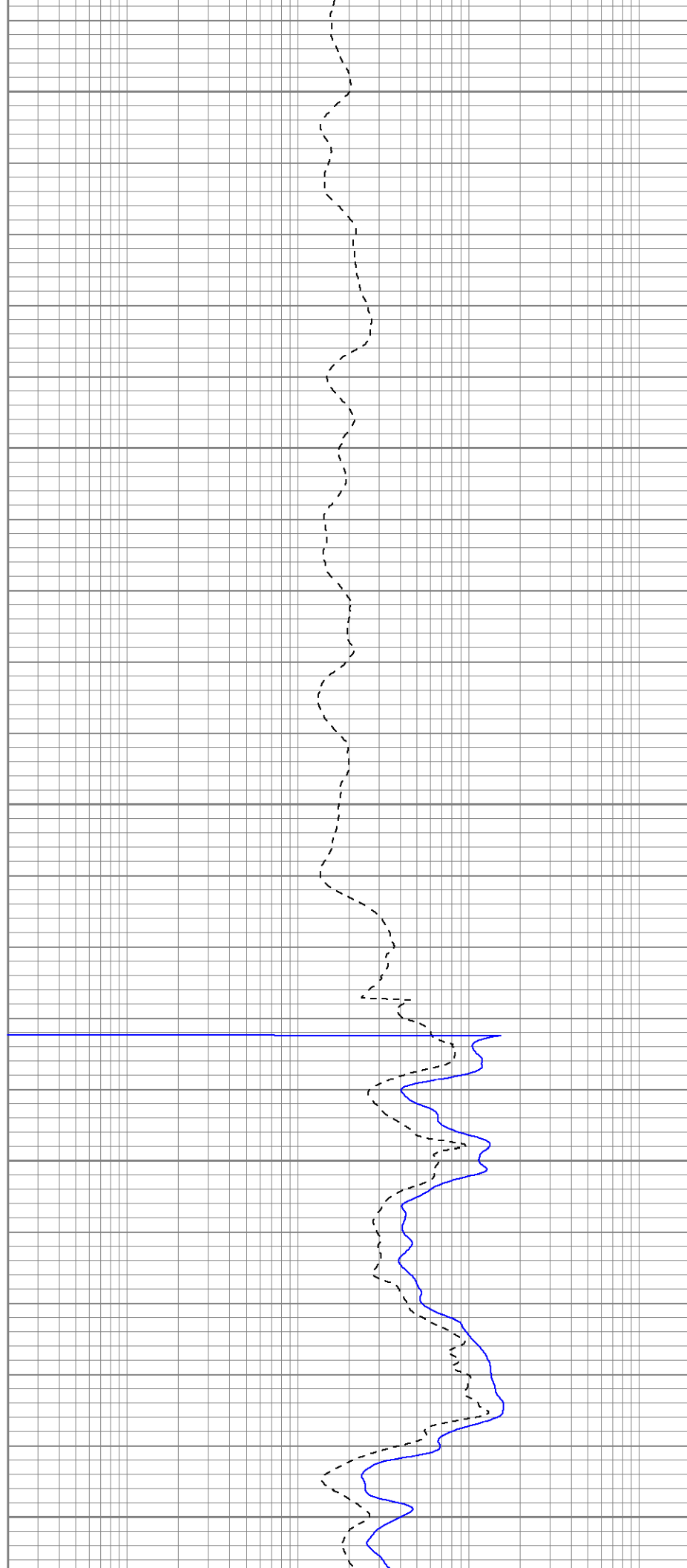
850

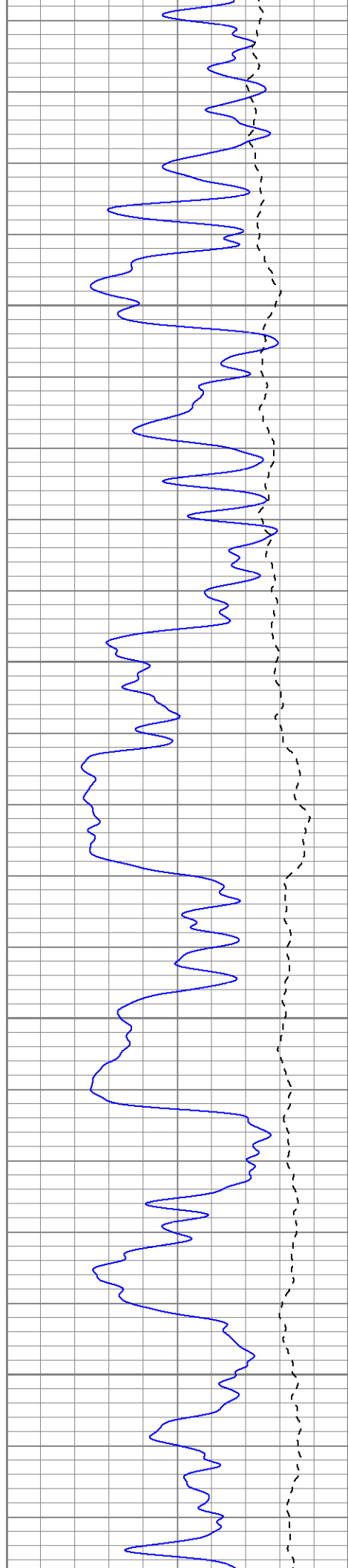
900

Fluid Level

950

1000



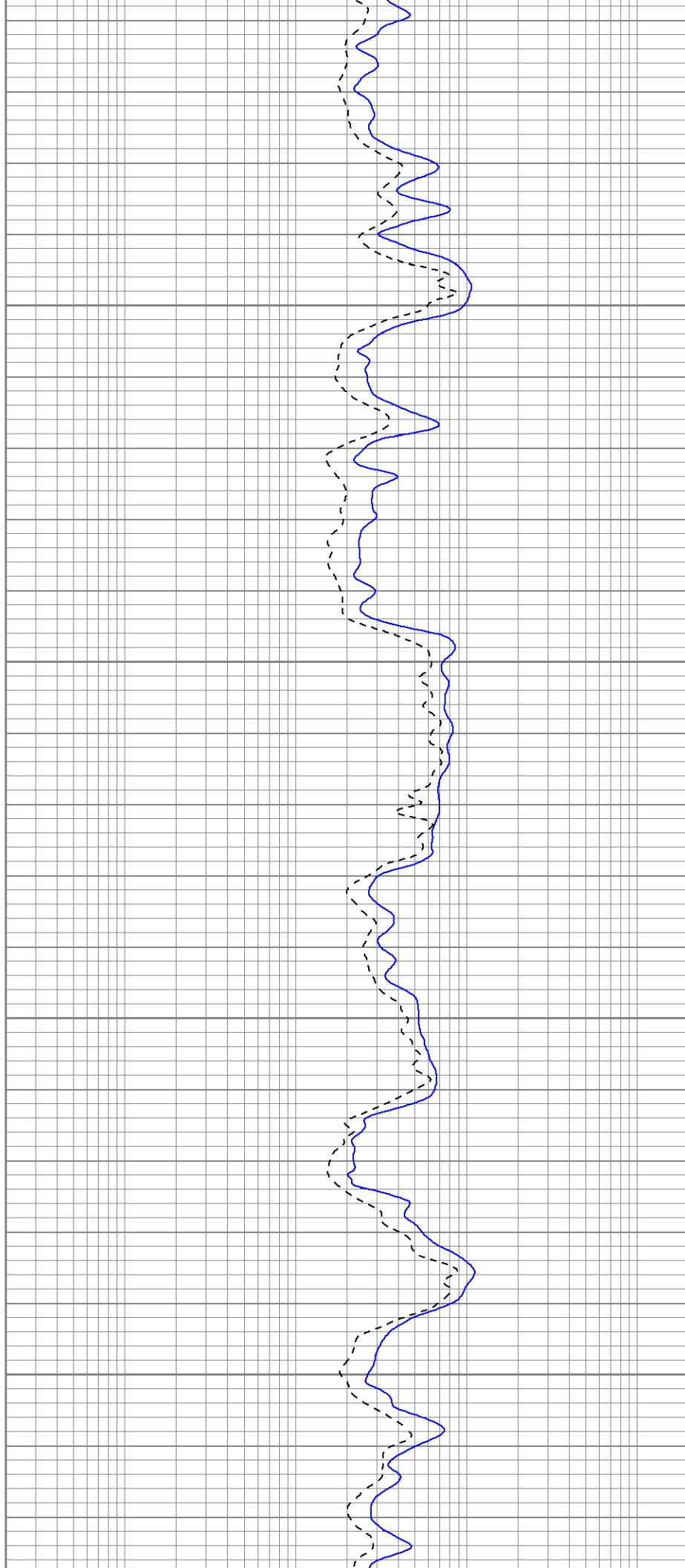


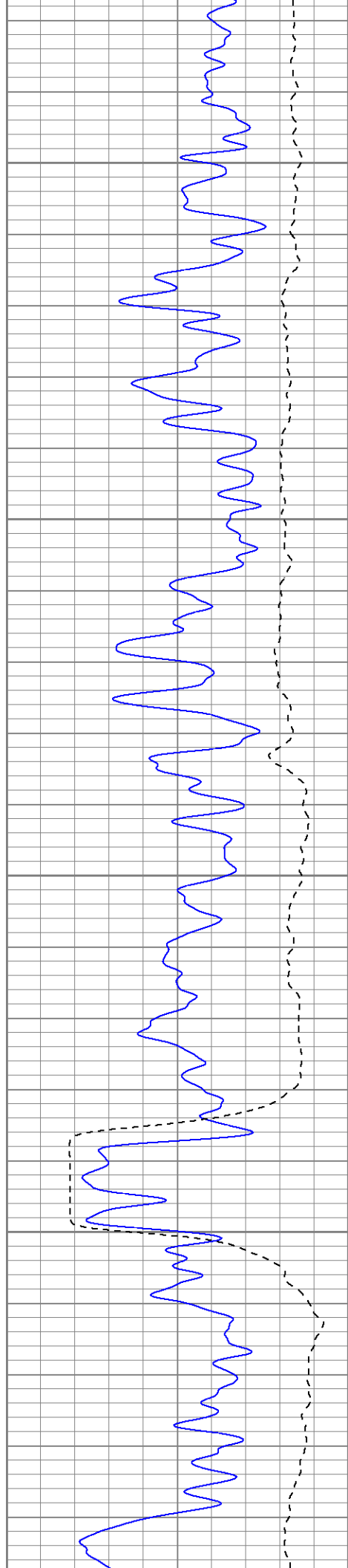
1050

1100

1150

1200



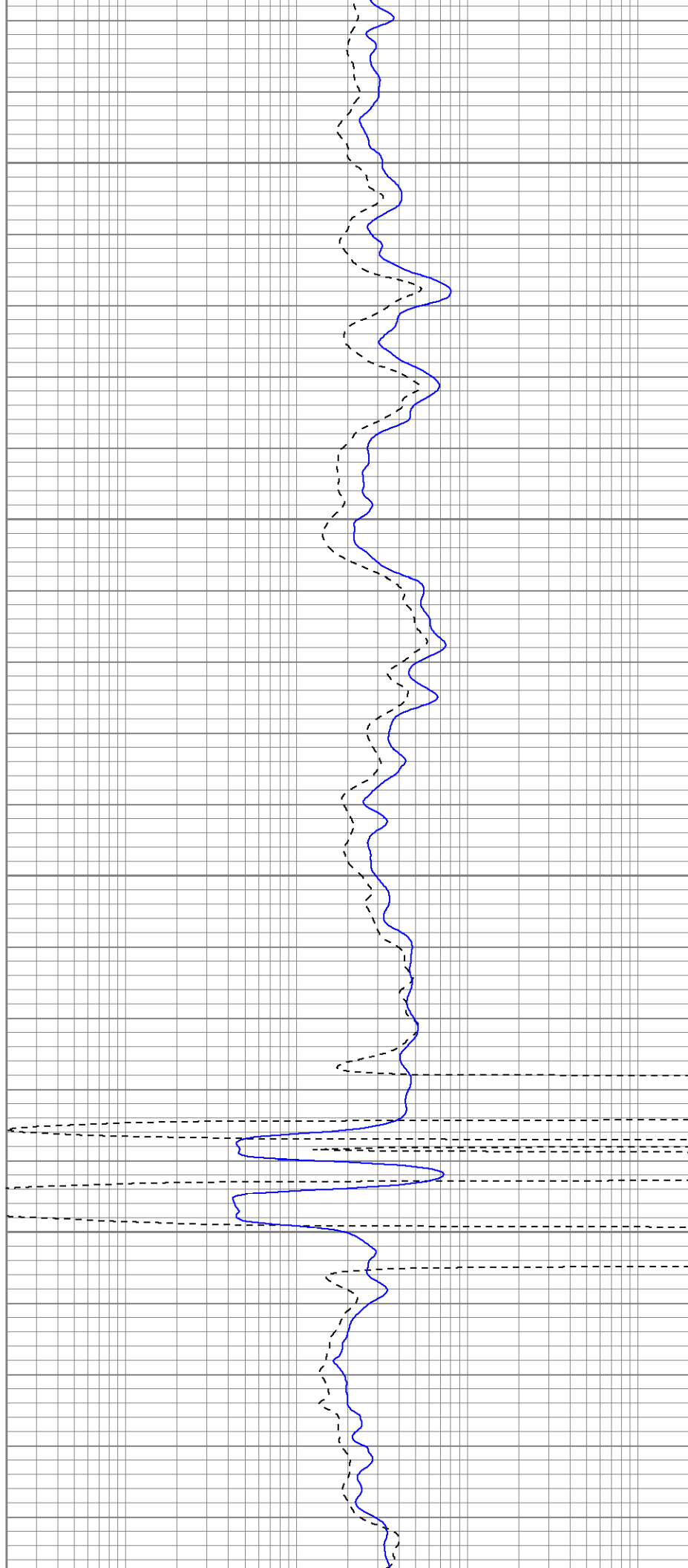


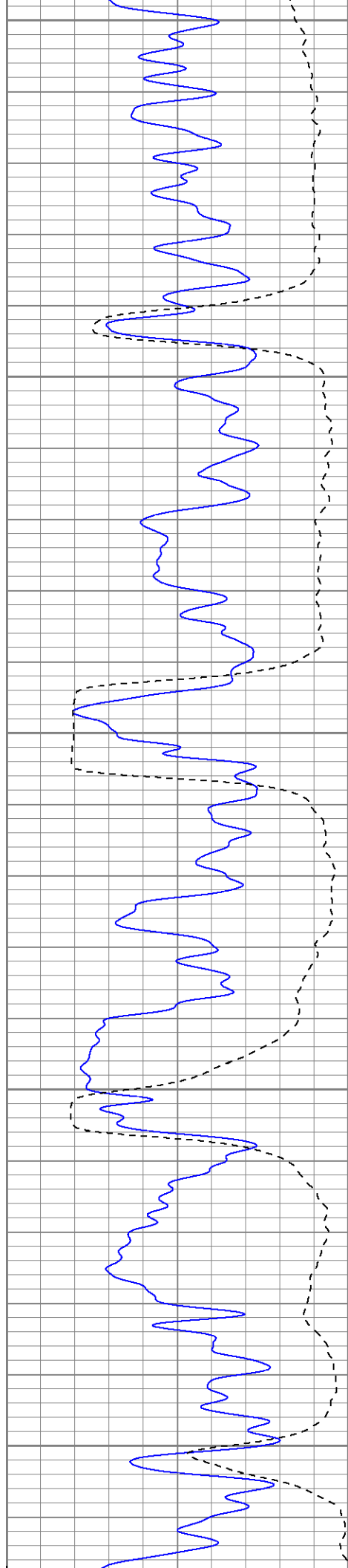
1250

1300

1350

1400





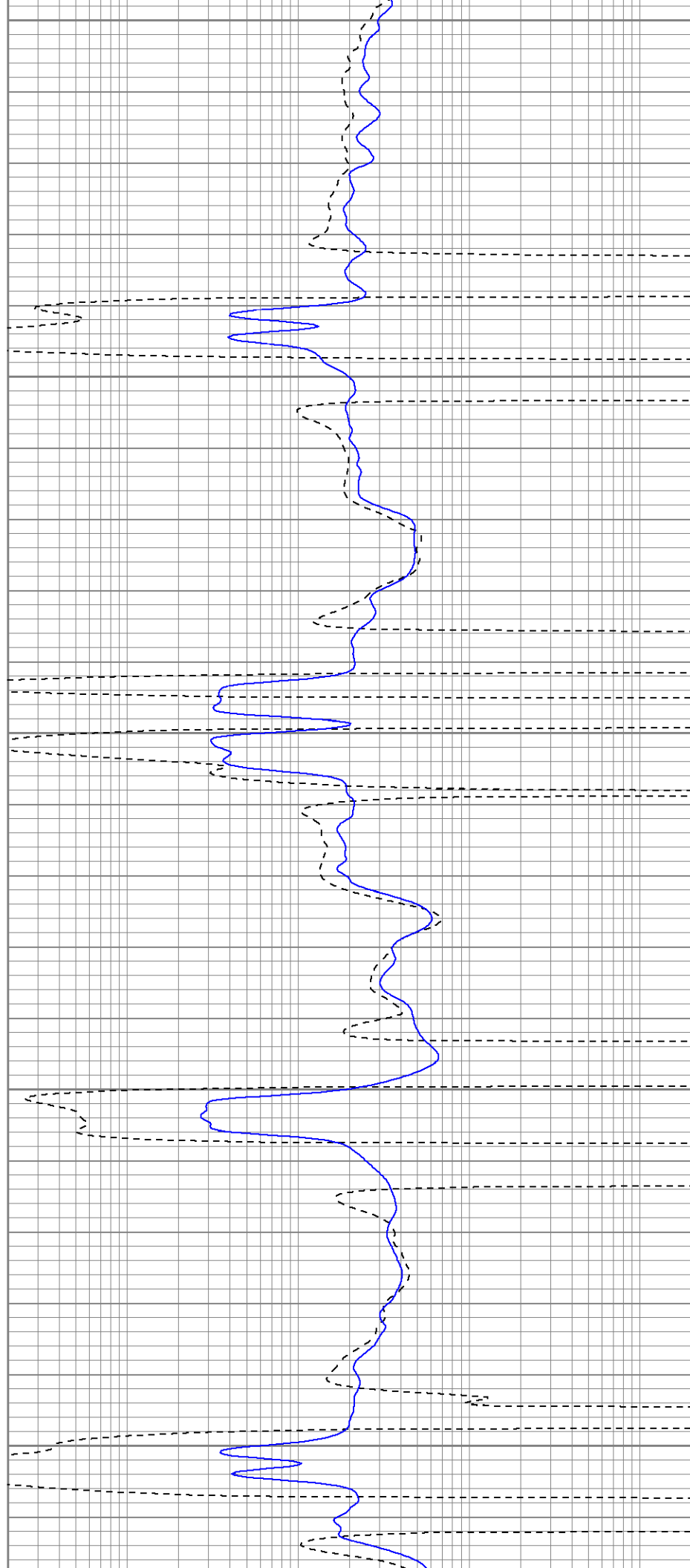
1450

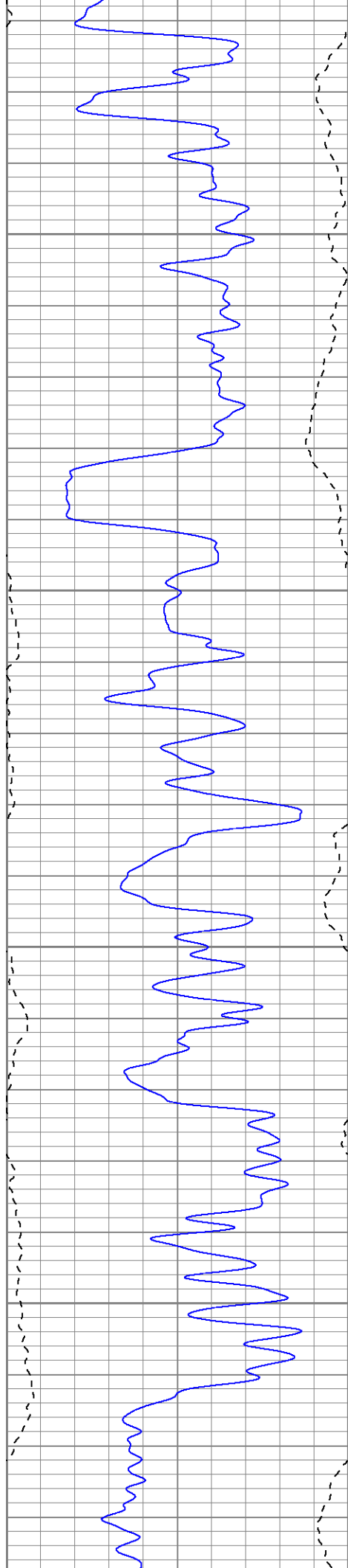
1500

1550

1600

1650



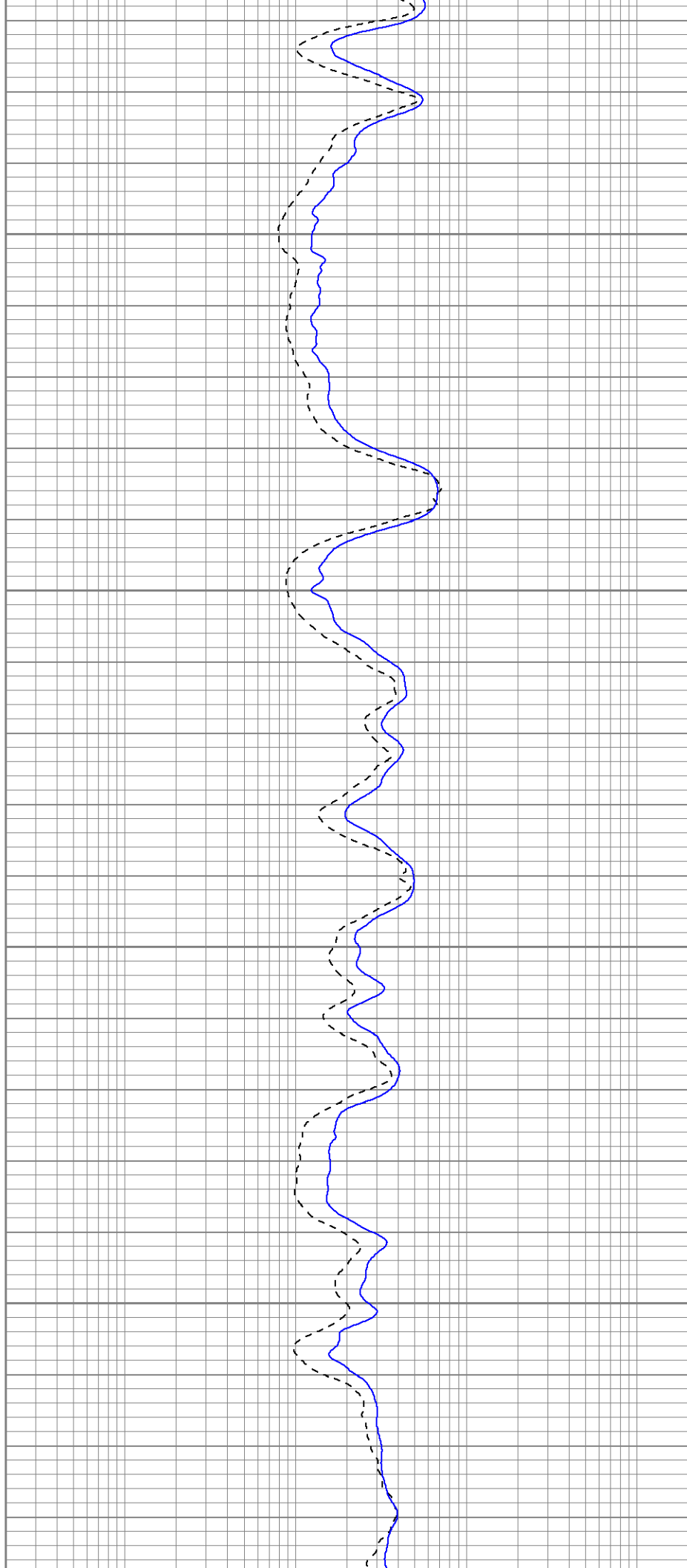


1700

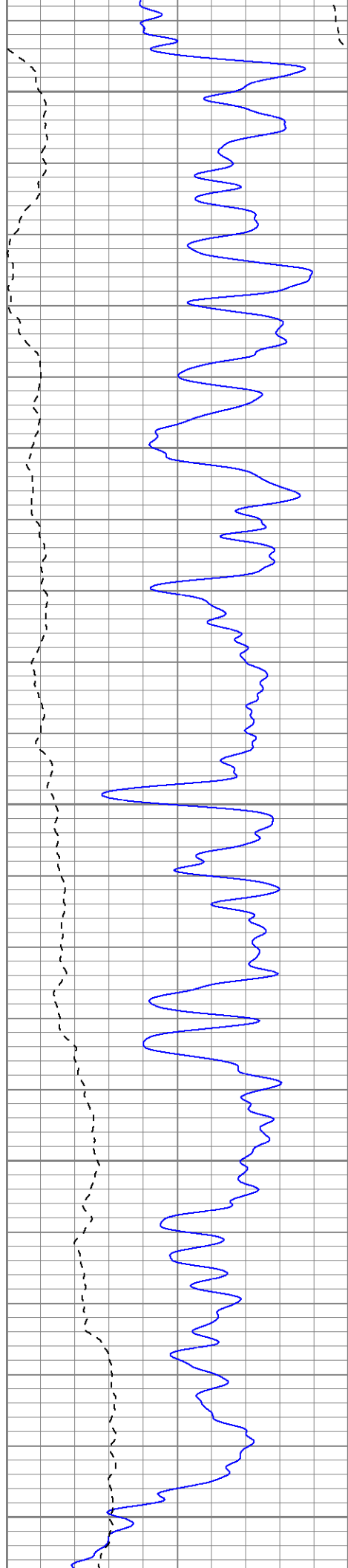
1750

1800

1850







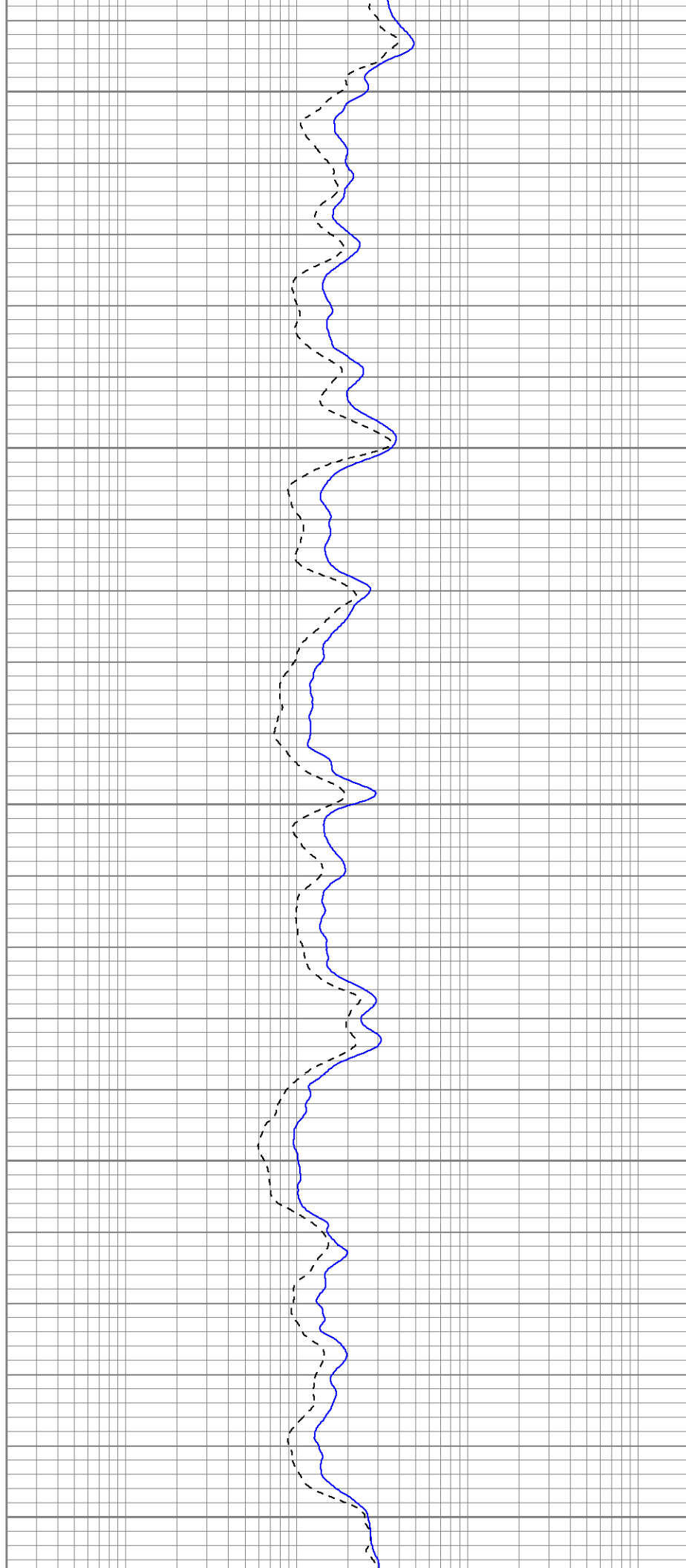
1900

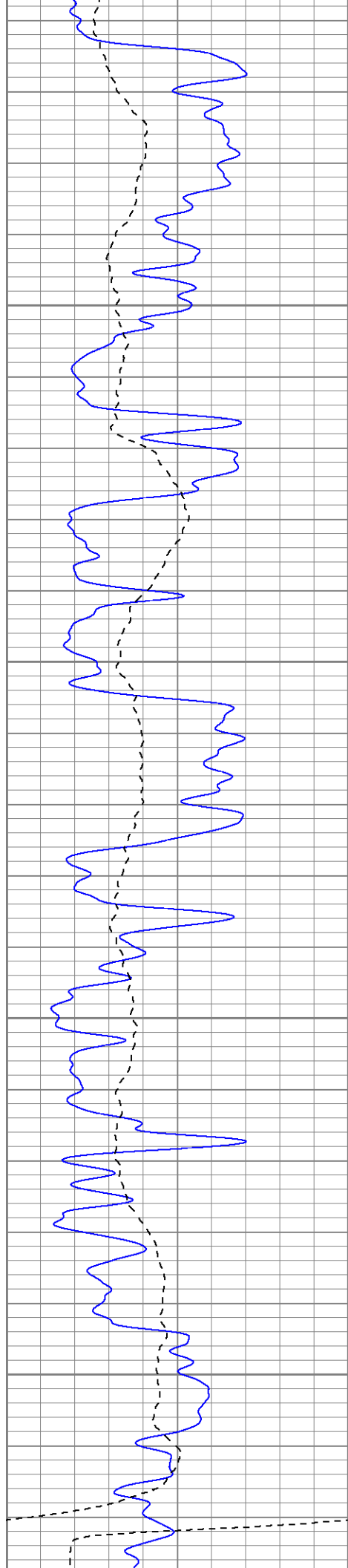
1950

2000

2050

2100



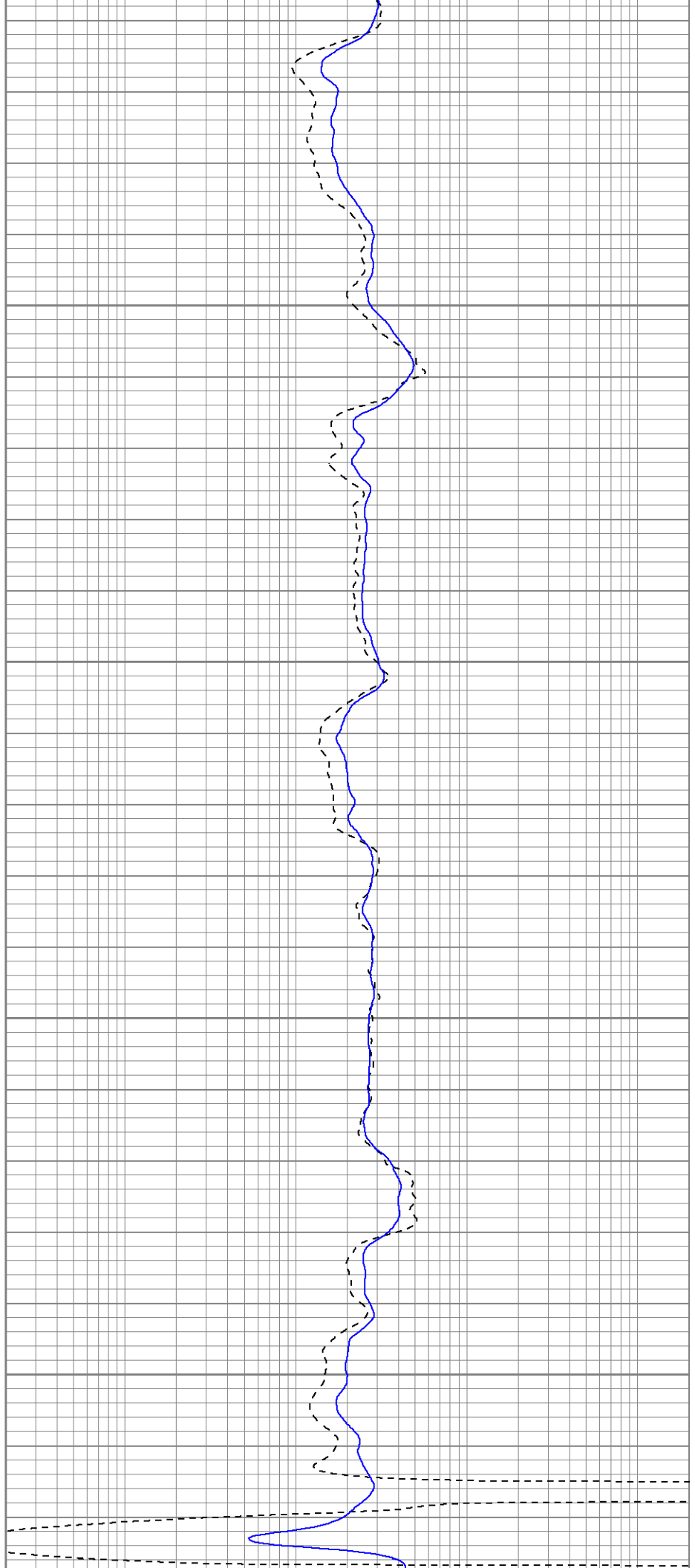


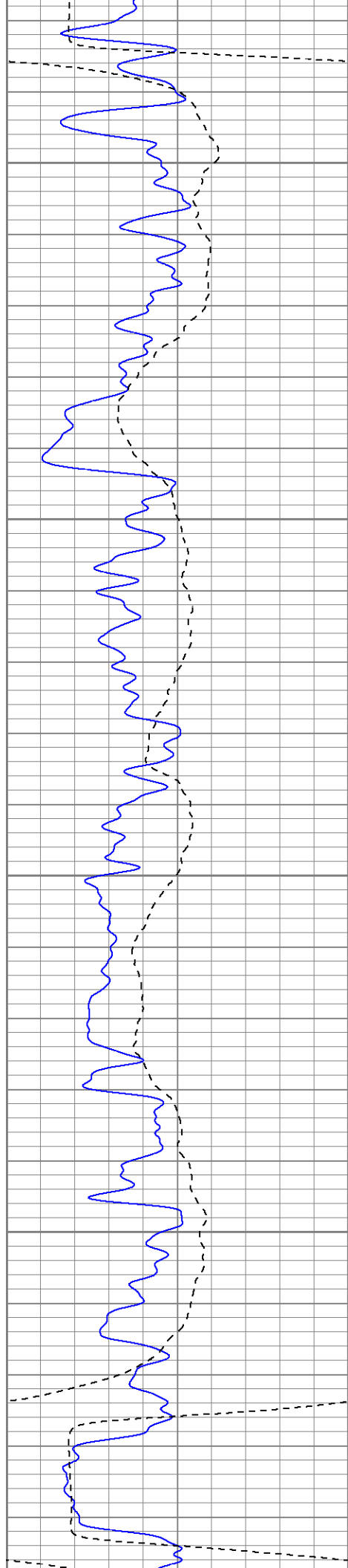
2150

2200

2250

2300



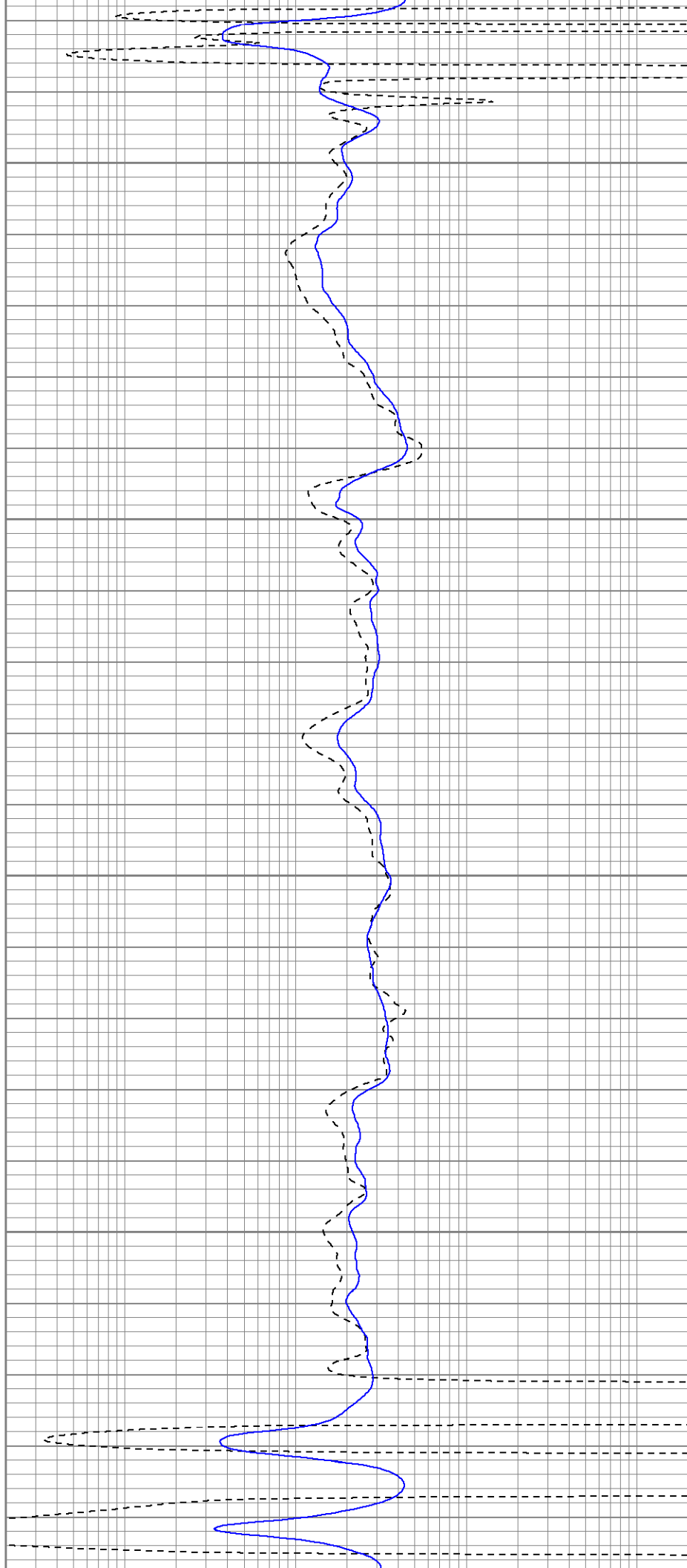


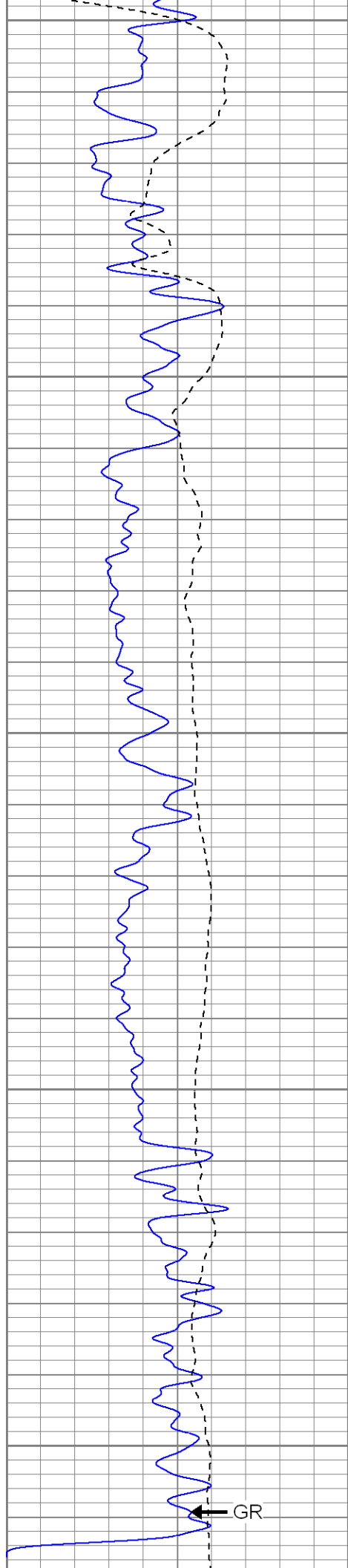
2350

2400

2450

2500





2550

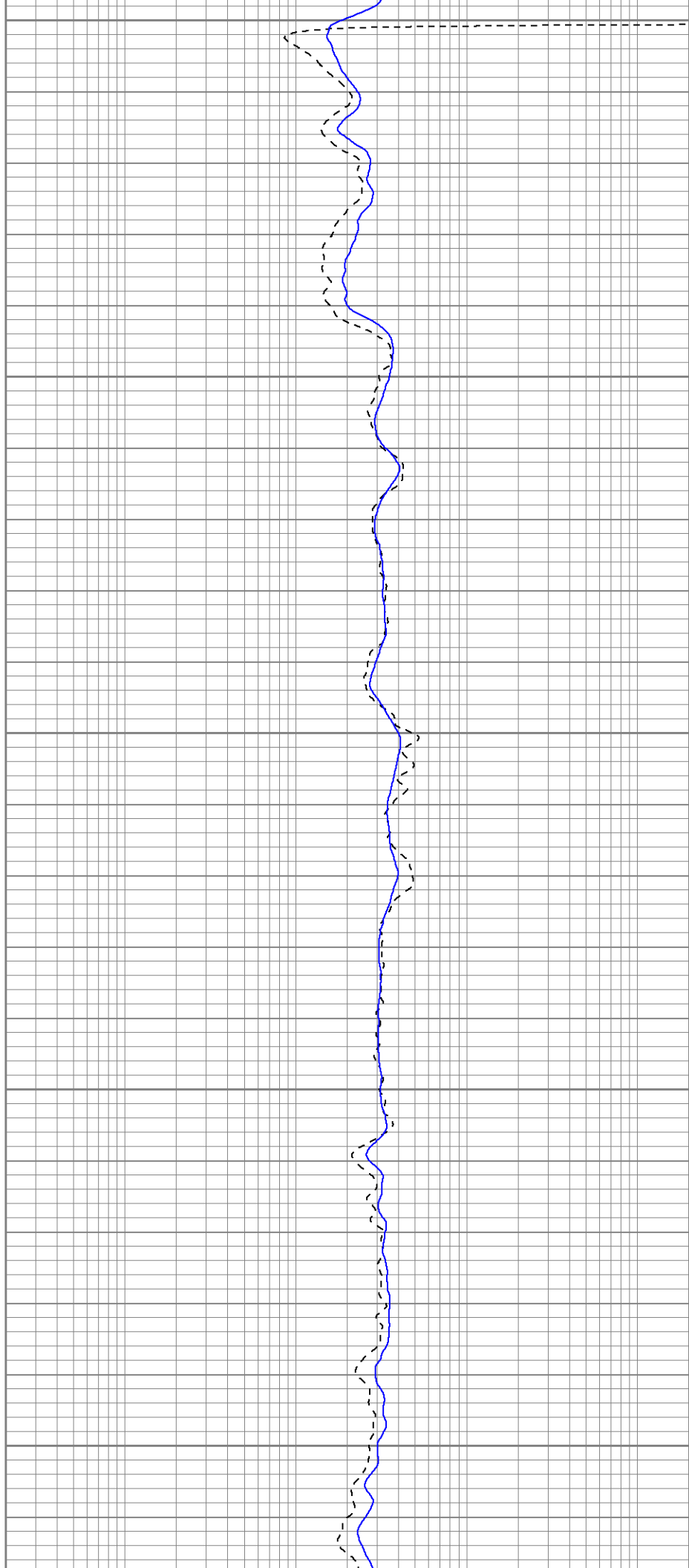
2600

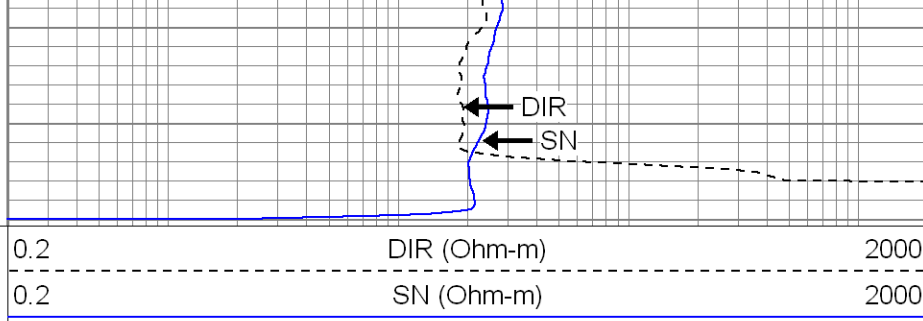
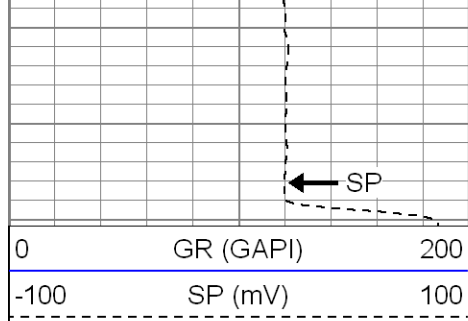
2650

2700

2750

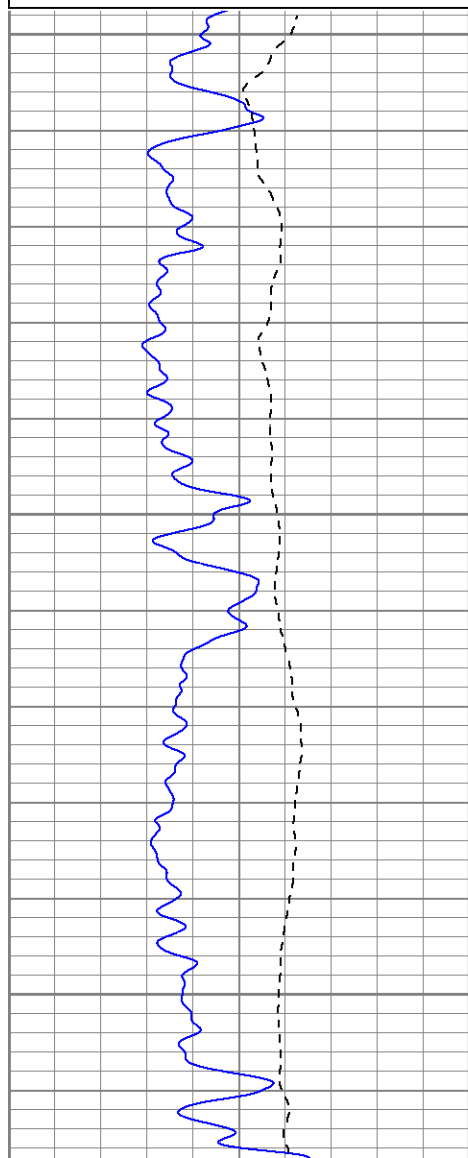
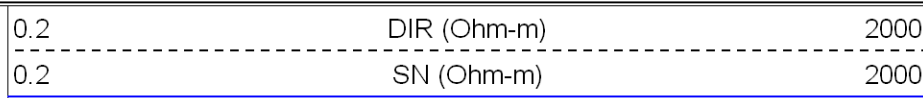
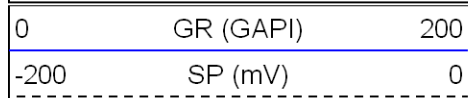
GR





# Repeat Section

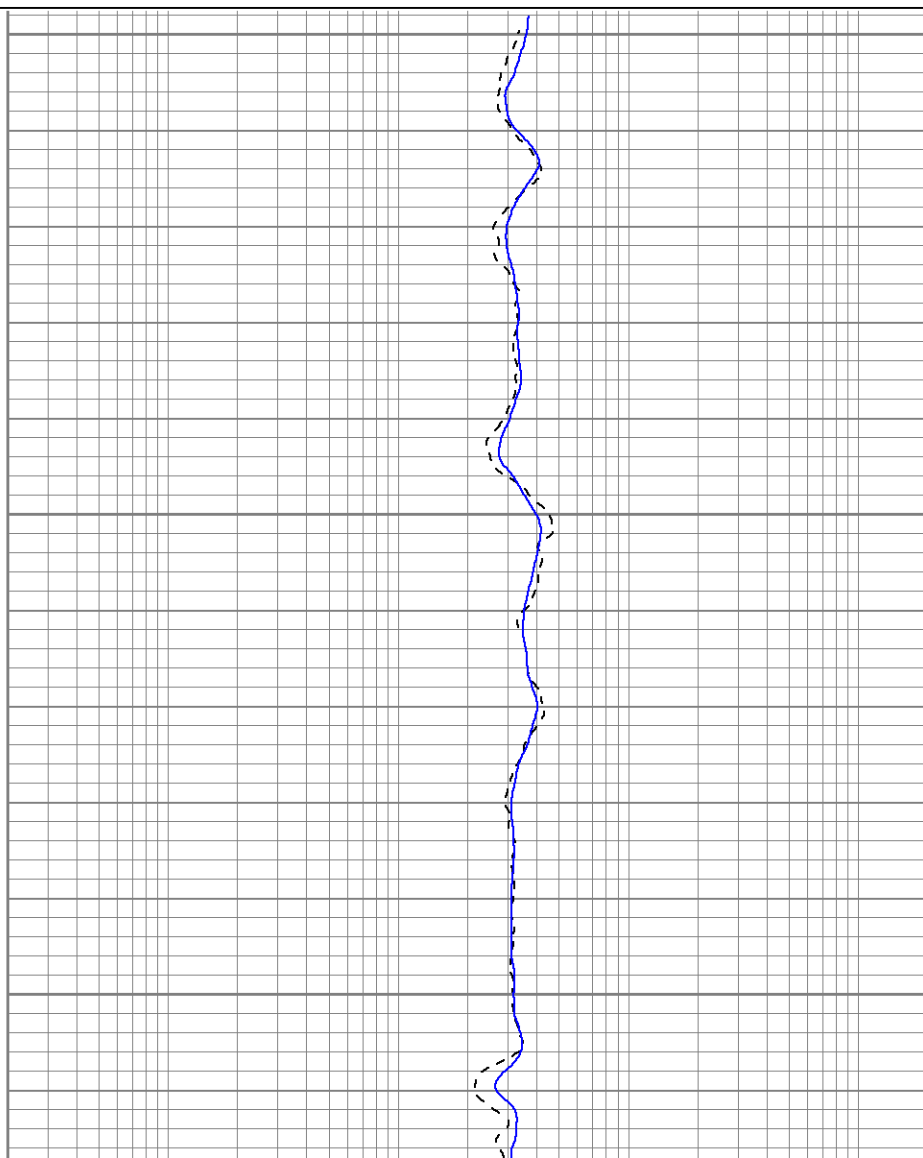
Database File: lickitysplitdi.db  
 Dataset Pathname: pass1.1  
 Presentation Format: iel  
 Dataset Creation: Mon Dec 14 08:49:31 2009 by Calc Open-Cased 071220  
 Charted by: Depth in Feet scaled 1:240

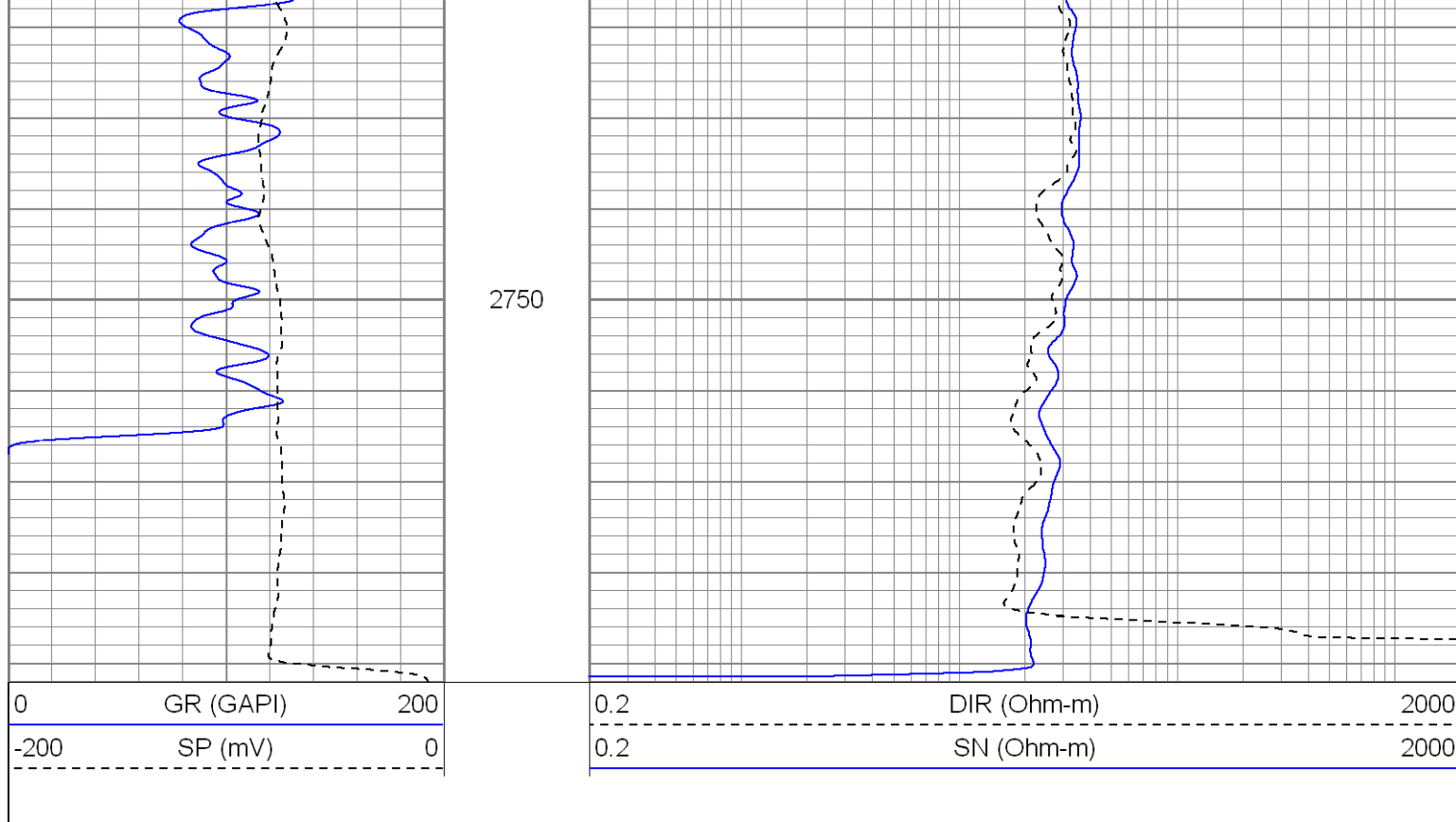


2600

2650

2700





### Calibration Report

Database File: lickitysplitdi.db  
 Dataset Pathname: pass2  
 Dataset Creation: Sat Dec 12 03:37:12 2009 by Log Open-Cased 071220

### Induction Tool Calibration Report

Serial Number: 121  
 Tool Model: GL121  
 Downhole Cal Performed: Mon Dec 07 06:31:58 2009  
 Surface Cal Performed: Fri Dec 04 08:51:07 2009  
 After Survey Verification Performed:

Surface Calibration:	Air	Loop	
Conductivity Reference:	0.000	450.000	mmho
Conductivity Reading:	0.005	0.626	V
Internal Reference:	Zero	Cal	
Conductivity Reference:	0.000	500.000	mmho
Conductivity Reading:	0.009	0.631	V



Downhole Calibration:	Internal Zero	Internal Cal	
Conductivity Reference:	3.282	453.999	mmho
Conductivity Reading:	-1.663	456.644	V
Short Normal Reference:	0.000	17.000	Ohm-m
Short Normal Reading:	0.016	0.201	V

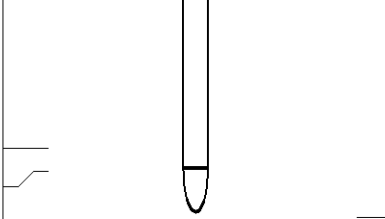
Results:	Gain	Offset
Loop Conductivity:	724.756	-3.402
Downhole Correction:	0.983	4.918
Short Normal Resistivity:	91.790	-1.449

### Compensated Density Calibration Report

Serial-Model: 2501DHT-DHT  
 Source / Verifier: /  
 Master Calibration Performed: Fri Dec 04 08:50:44 2009

Master Calibration					
	Density			Far Detector	Near Detector
Magnesium	1.710	g/cc		767.26	303.43 cps
Aluminum	2.590	g/cc		171.91	210.81 cps
Spine Angle = 76.32			Density/Spine Ratio = 0.572		
	Size			Reading	
Small Ring	8.00	in		6196.63	
Large Ring	14.00	in		10494.70	
Gamma Ray Calibration Report					
Serial Number:		2001			
Tool Model:		OH			
Performed:		Fri Dec 04 08:49:38 2009			
Calibrator Value:		1.0	GAPI		
Background Reading:		0.0	cps		
Calibrator Reading:		1.0	cps		
Sensitivity:		0.2500	GAPI/cps		

Sensor	Offset (ft)	Schematic	Description	Len (ft)	OD (in)	Wt (lb)
GR	26.85		None	0.75	1.50	5.00
			GR-OH (2001) 2001	3.56	3.25	40.00
			CDL-DHT (2501DHT) Digital High Temp CDL Tool	9.69	4.00	201.00
LSD	18.31					
DCAL	18.02					
SSD	17.77					
HEADVOLT	16.00					
DIC	6.89		IEL-GL121 (121)	16.00	4.00	178.00

SP SN	1.50 1.00				
----------	--------------	---	--	--	--

Dataset:	lickitysplitdi.db: field/well/run1/pass1.1
Total Length:	30.00 ft
Total Weight:	424.00 lb
O.D.	4.00 in