



COMPENSATED DENSITY LOG

Company Pioneer Natural Resources
Well Sayulita 14-33
Field Purgatorie River
County Las Animas State CO

Location: API # : 05 071 09717 00

443' FSL & 519' FWL

SIL

SEC 33 TWP 33S RGE 65W

Permanent Datum Ground Level Elevation 6523'
Log Measured From Kelly Bushing 4' Above G.L.
Drilling Measured From Kelly Bushing

Elevation
K.B. 6527'
D.F. -----
G.L. 6523'

Date 12/22/09

Run Number one

Depth Driller 930'

Depth Logger 927'

Bottom Logged Interval 925'

Top Log Interval 395'

Casing Driller 416'

Casing Logger 415'

Bit Size 7 7/8"

Type Fluid in Hole water

Density / Viscosity ///

pH / Fluid Loss ///

Source of Sample ///

Rm @ Meas. Temp ///

Rmf @ Meas. Temp ///

Rmc @ Meas. Temp ///

Source of Rmf / Rmc ///

Rm @ BHT ///

Time Circulation Stopped 12:00 p.m.

Time Logger on Bottom 1:25 p.m.

Maximum Recorded Temperature ///

Equipment Number 697

Location Trinidad

Recorded By Worley

Witnessed By Mr. Vigil

<<< Fold Here >>>

All interpretations are opinions based on inferences from electrical or other measurements and we cannot and do not guarantee the accuracy or correctness of any interpretation, and we shall not, except in the case of gross or willful negligence on our part, be liable or responsible for any loss, costs, damages, or expenses incurred or sustained by anyone resulting from any interpretation made by any of our officers, agents or employees. These interpretations are also subject to our general terms and conditions set out in our current Price Schedule.

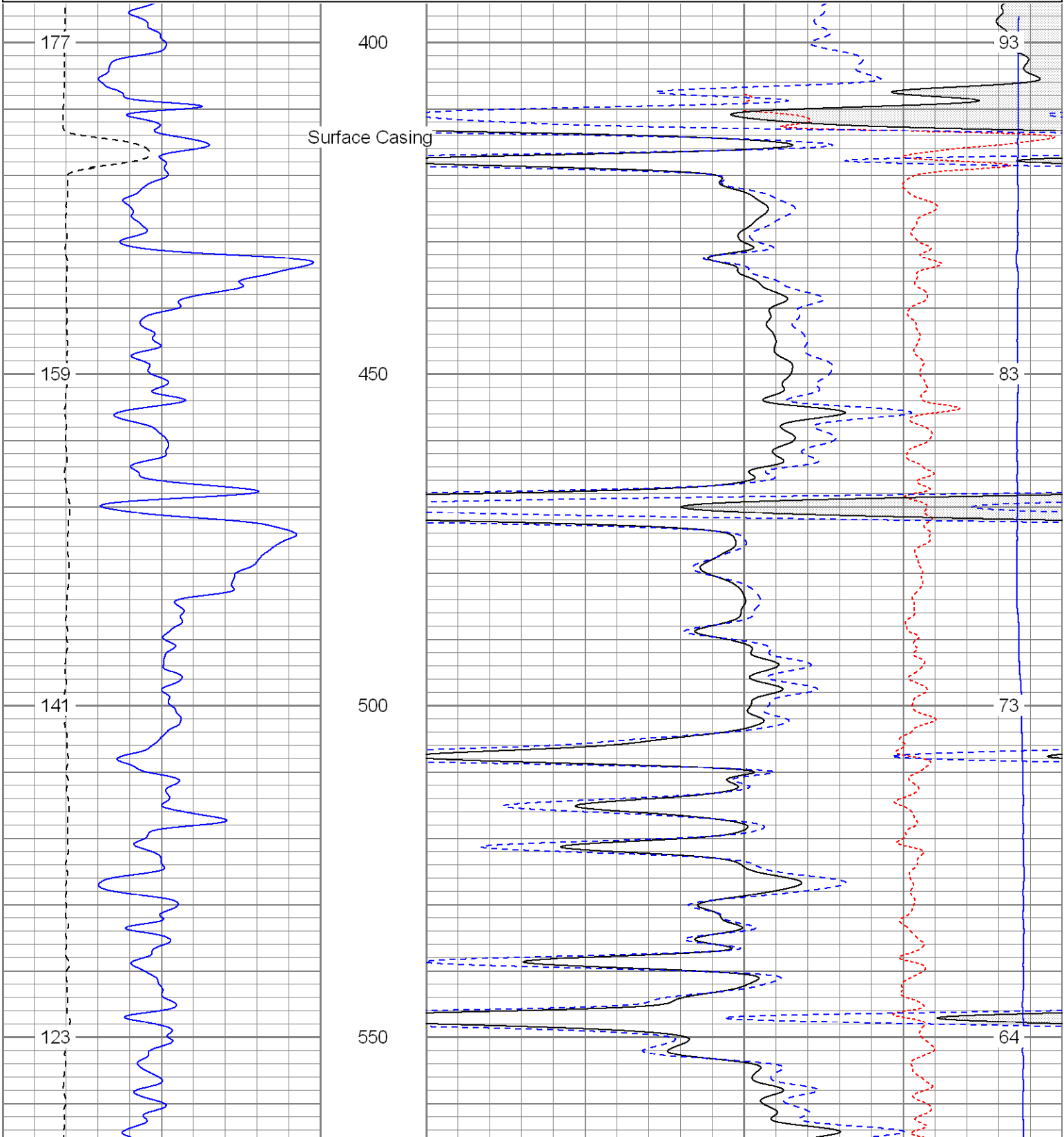
Comments

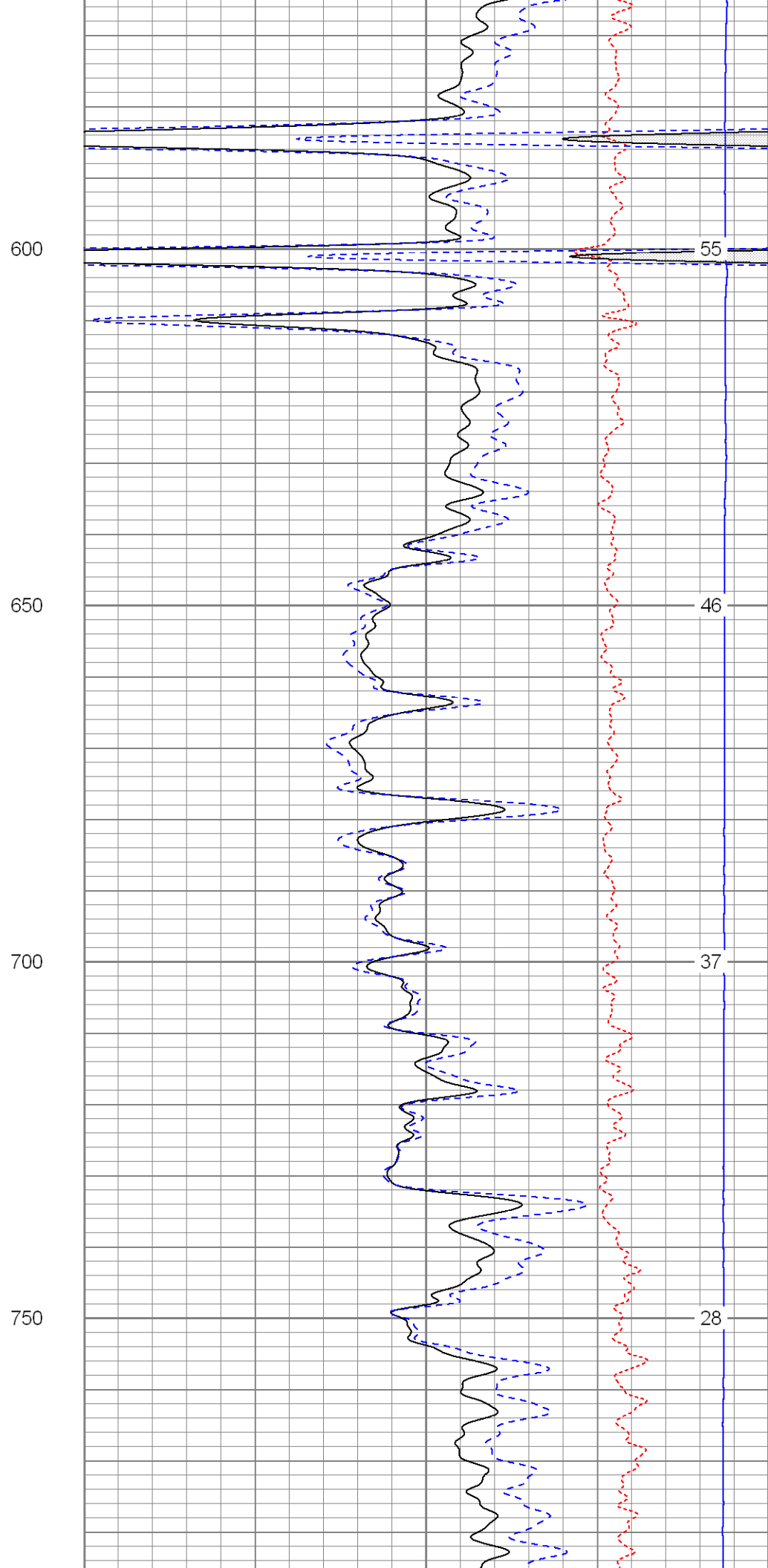
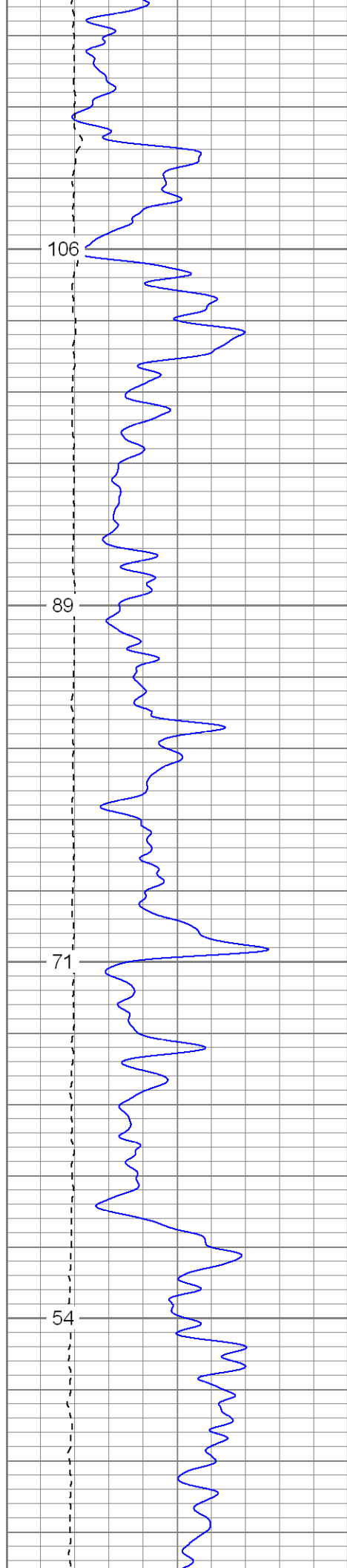
Left at Big 4, go over bridge, go left, stay on main road to Widow Woman Compressor, go left thru gate, drive around Compressor, at PCW 21-4 go left, next left up hill to location.

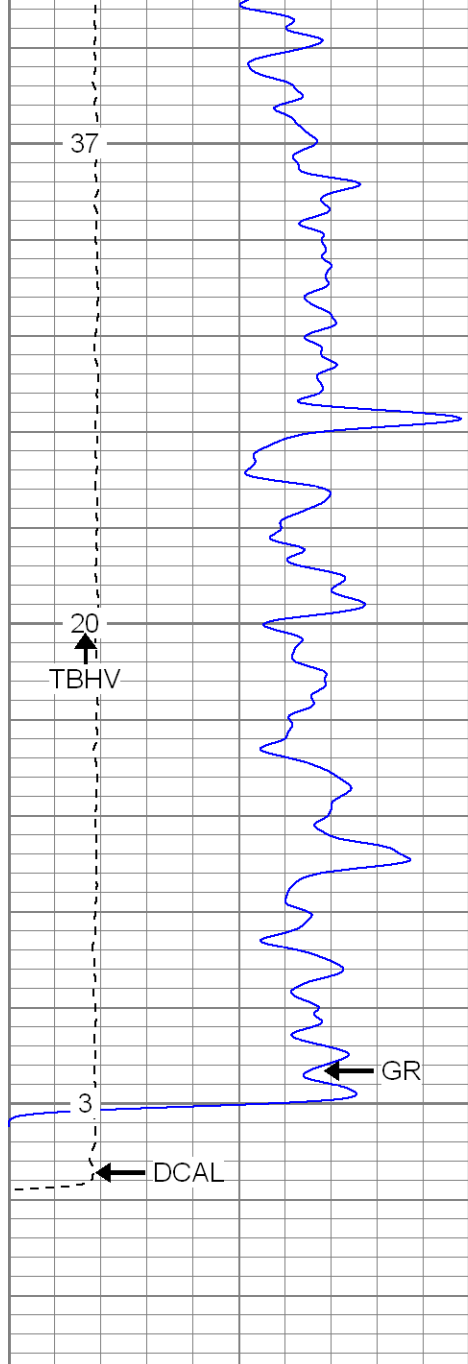


Main Pass

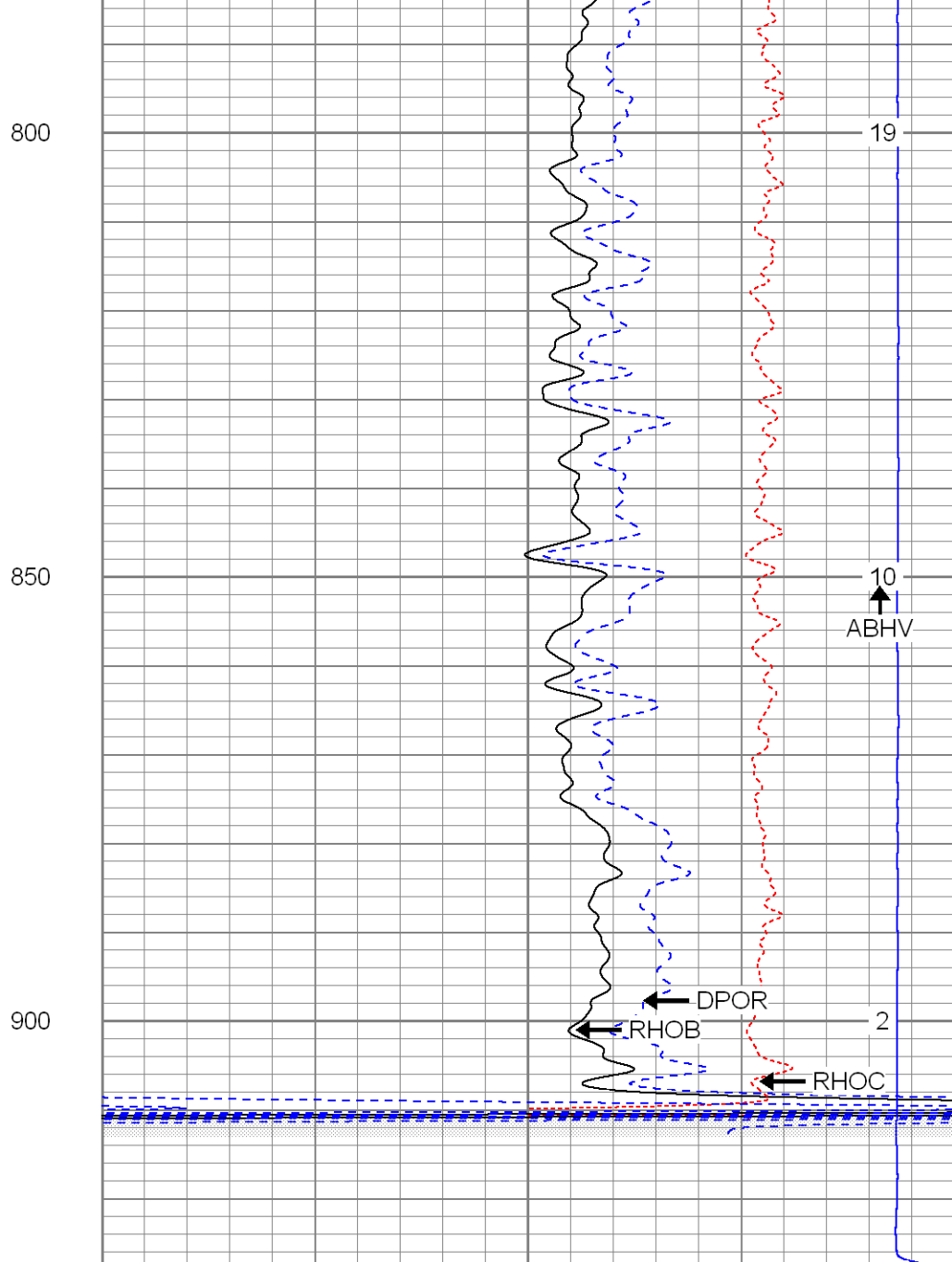
0	GR (GAPI)	200	2	RHOB (g/cc)		3
6	DCAL (in)	16	1	RHOB (g/cc)		2
TBHV (ft3)			30	DPOR (pu)		-10
				-0.5	RHOC (g/cc)	0.5
				7000	LTEN (lb)	0
						ABHV (ft3)







0	GR (GAPI)	200
6	DCAL (in)	16
TBHV (ft3)		



2	RHOB (g/cc)	3
1	RHOB (g/cc)	2
30	DPOR (pu)	-10
-0.5	RHOC (g/cc)	0.5
7000	LTEN (lb)	0
ABHV (ft3)		

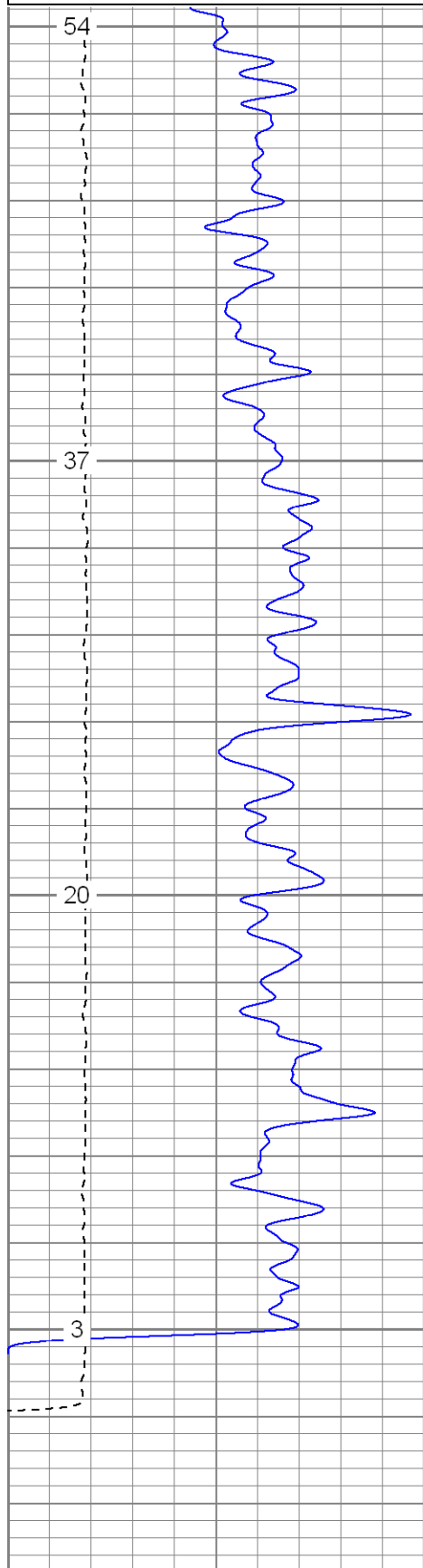


Repeat Section

Database File: sayulitadi.db
 Dataset Pathname: pass1.1
 Presentation Format: cdl
 Dataset Creation: Tue Dec 22 15:42:36 2009 by Calc Open-Cased 071220
 Charted by: Depth in Feet scaled 1:240

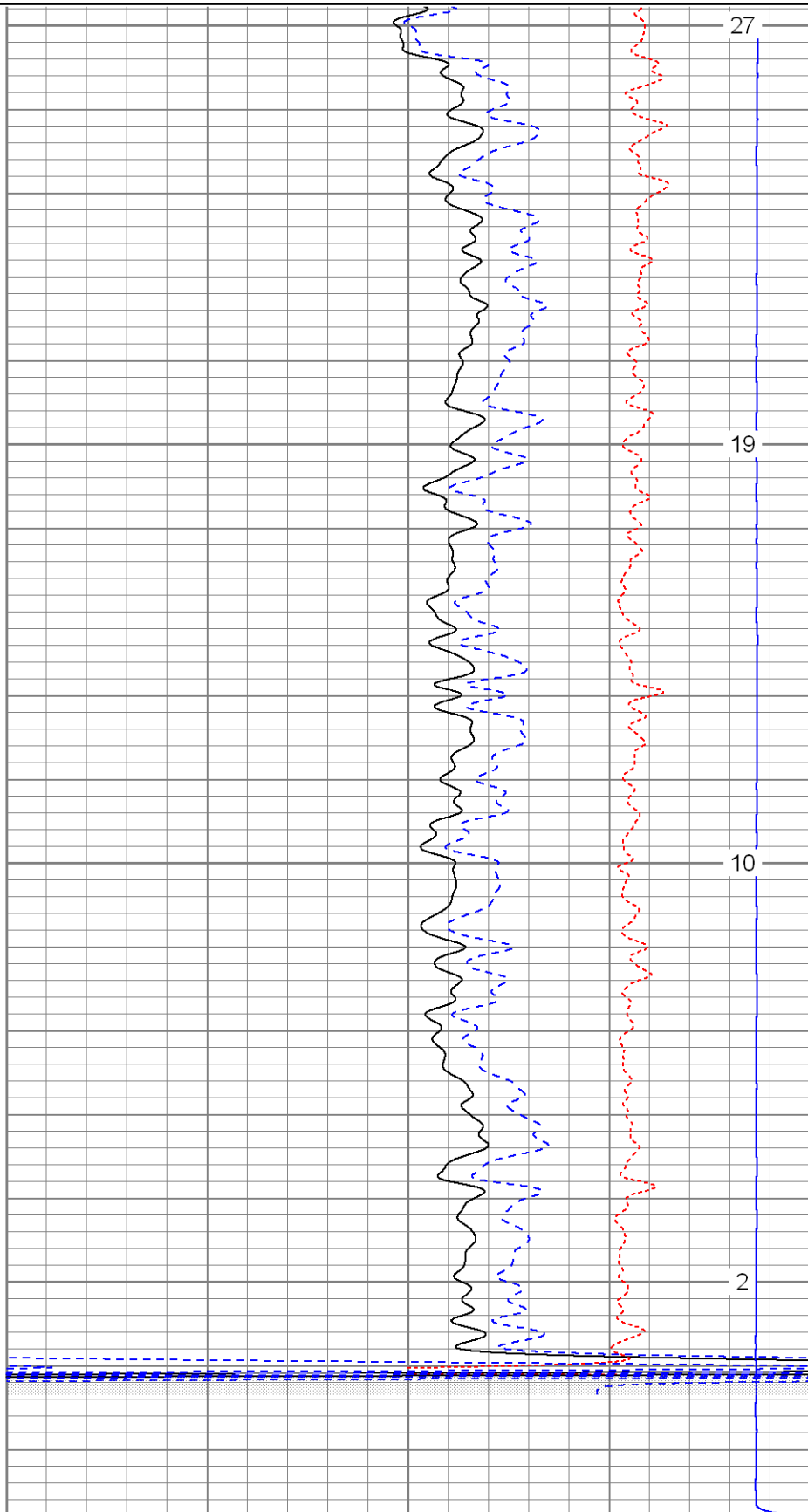
0	GR (GAPI)	200	2	RHOB (g/cc)	3
---	-----------	-----	---	-------------	---

0	GR (GAPI)	200
6	DCAL (in)	16
TBHV (ft3)		



0	GR (GAPI)	200
6	DCAL (in)	16
TBHV (ft3)		

2	RHOB (g/cc)	3
1	RHOB (g/cc)	2
30	DPOR (pu)	-10
-0.5	RHOC (g/cc)	0.5
7000	LTEN (lb)	0
ABHV (ft3)		



2	RHOB (g/cc)	3
1	RHOB (g/cc)	2
30	DPOR (pu)	-10

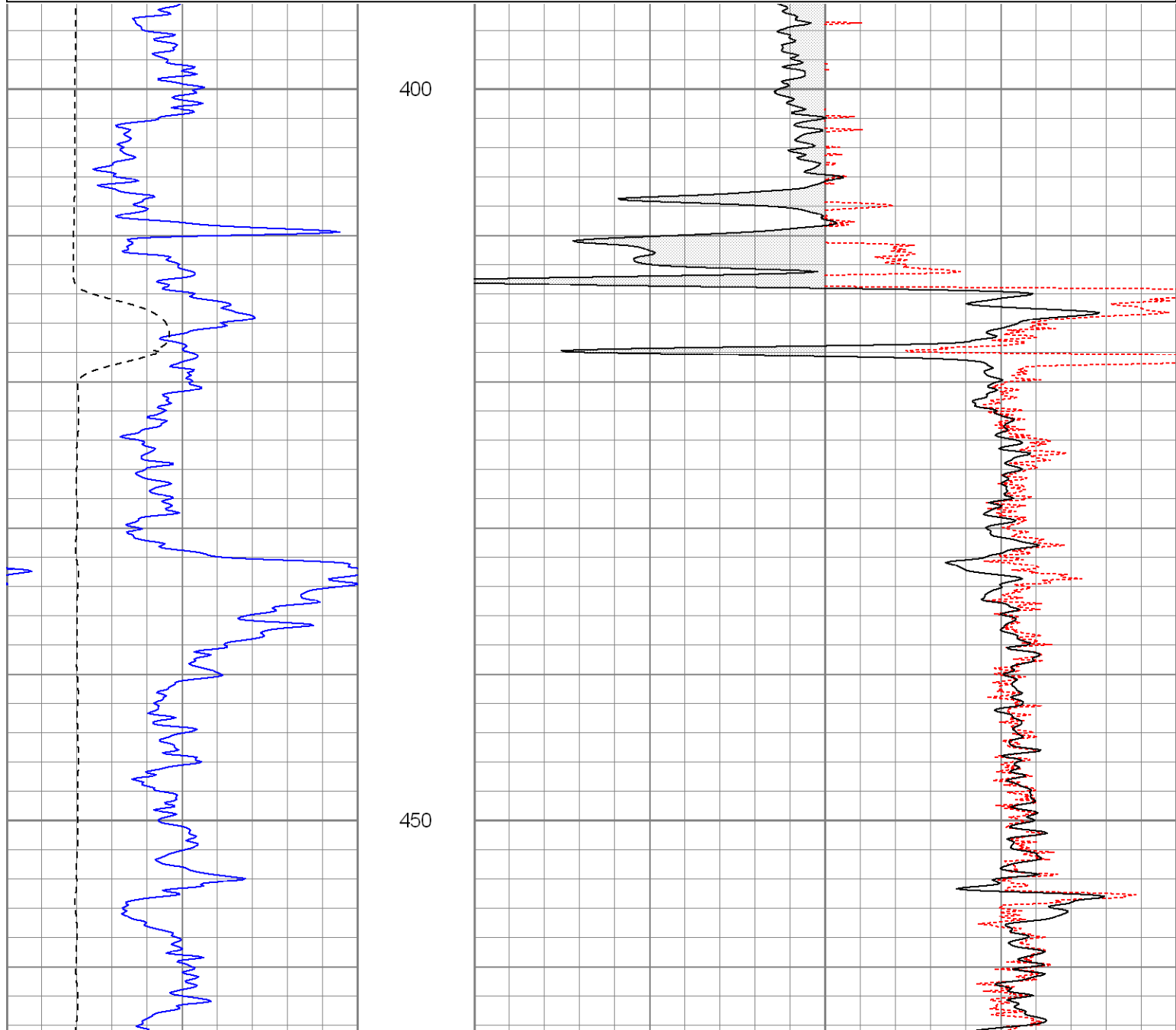
ABHV (ft3)	30	DPOR (pu)	-10
		-0.5	RHOC (g/cc) 0.5
		7000	LTEN (lb) 0
			ABHV (ft3)

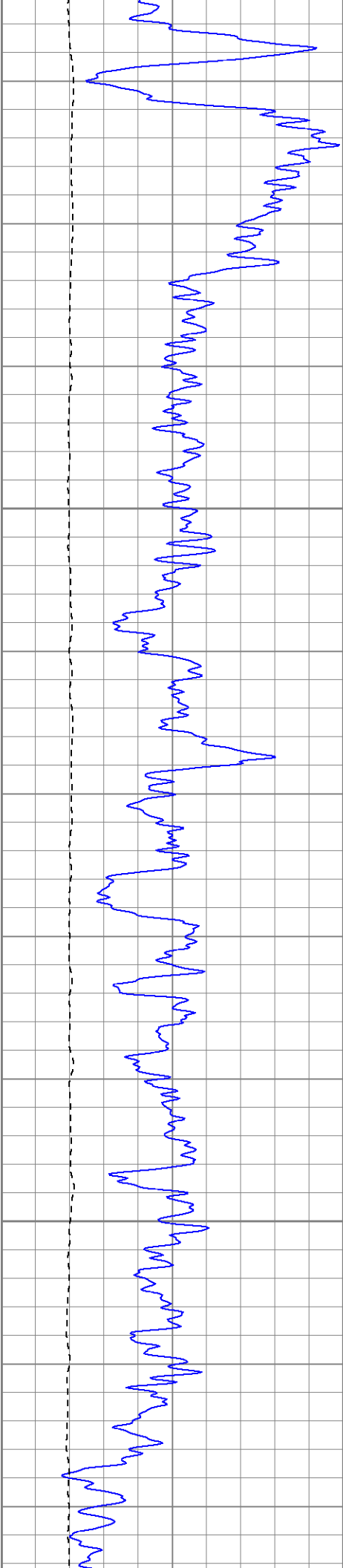


High Resolution Pass

Database File: sayulitadi.db
Dataset Pathname: pass2.1hr
Presentation Format: cdlhr
Dataset Creation: Tue Dec 22 15:38:46 2009 by Calc Open-Cased 071220
Charted by: Depth in Feet scaled 1:120

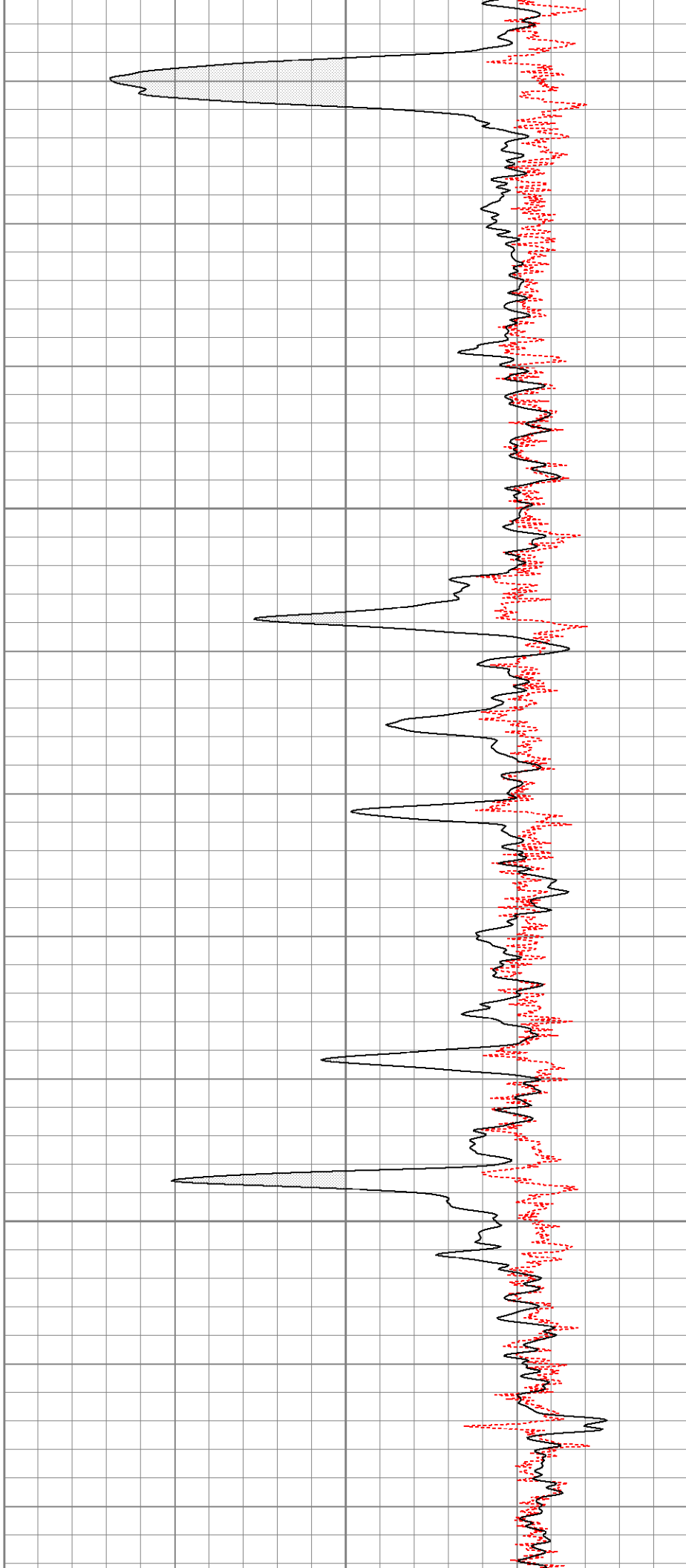
0	GR (GAPI)	200	1	RHOB (g/cc)	3
6	DCAL (in)	16		-0.5	RHOC (g/cc) 0.5





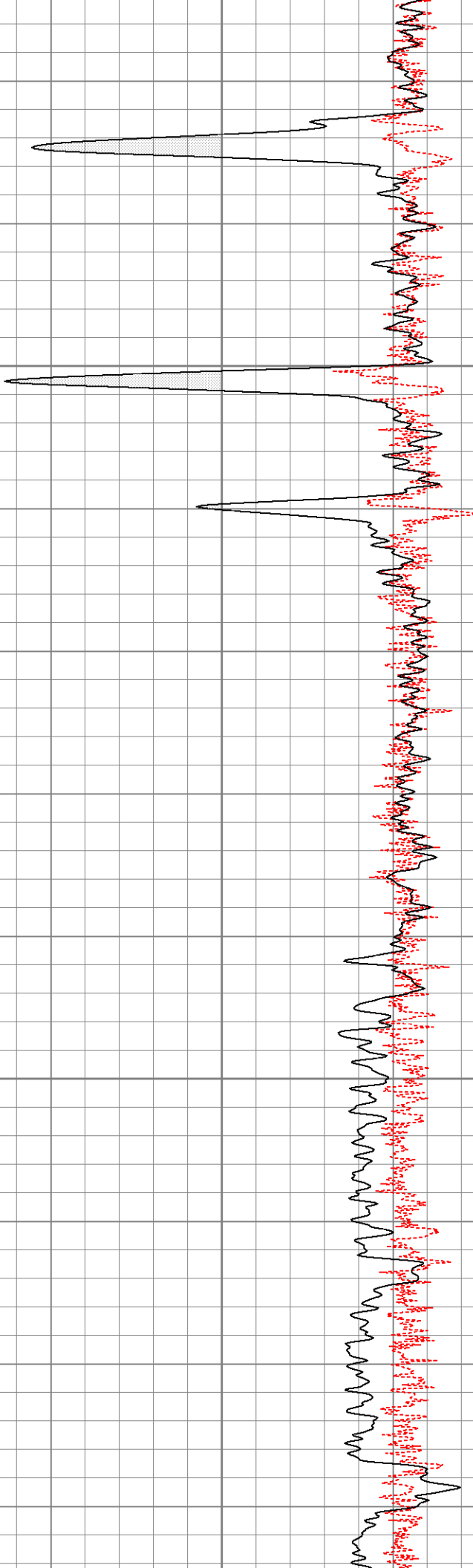
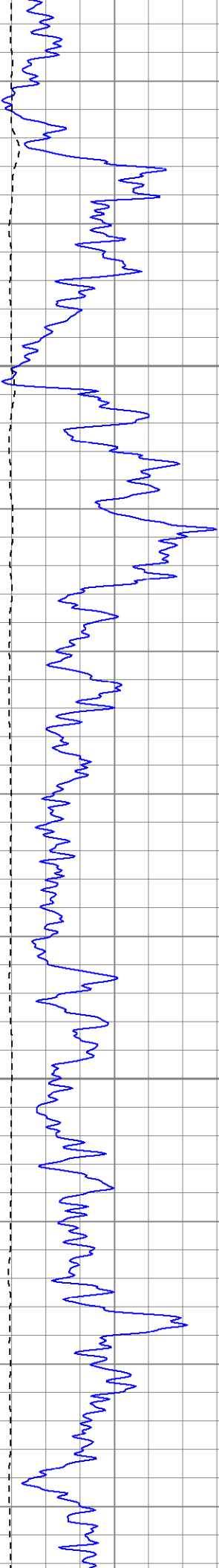
500

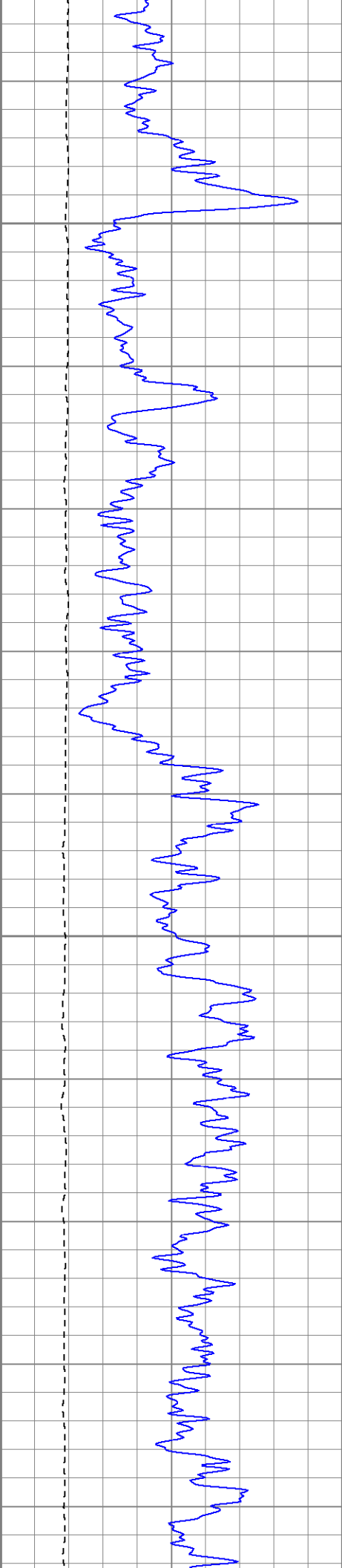
550



600

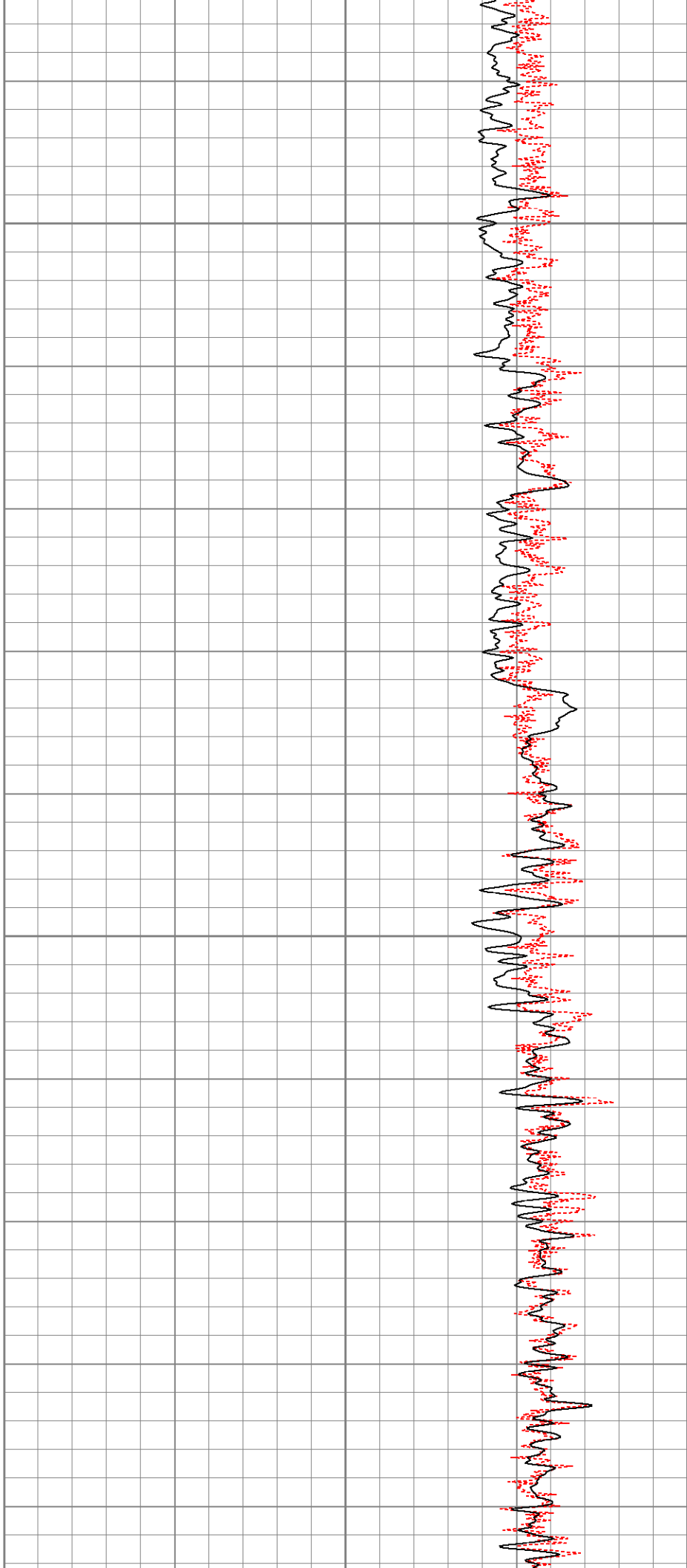
650

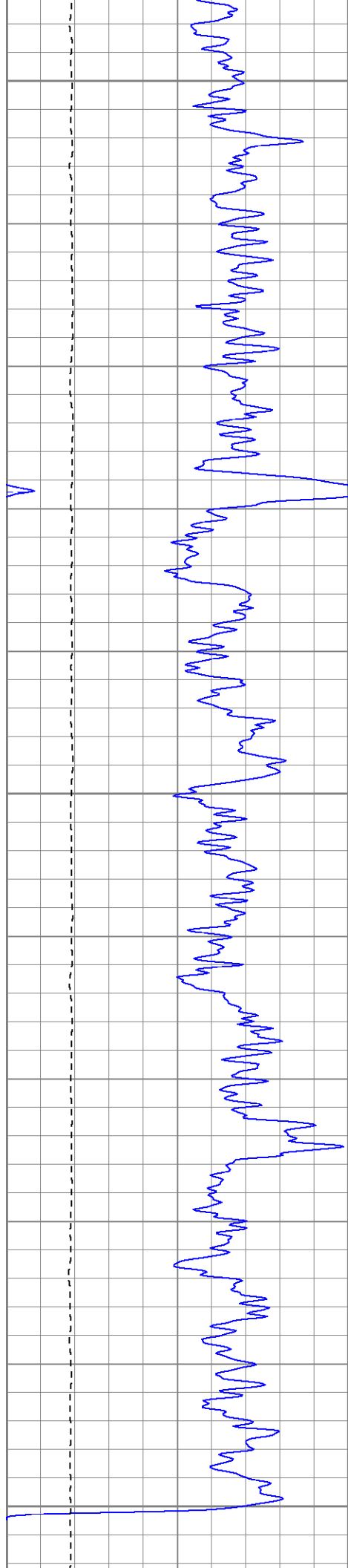




700

750

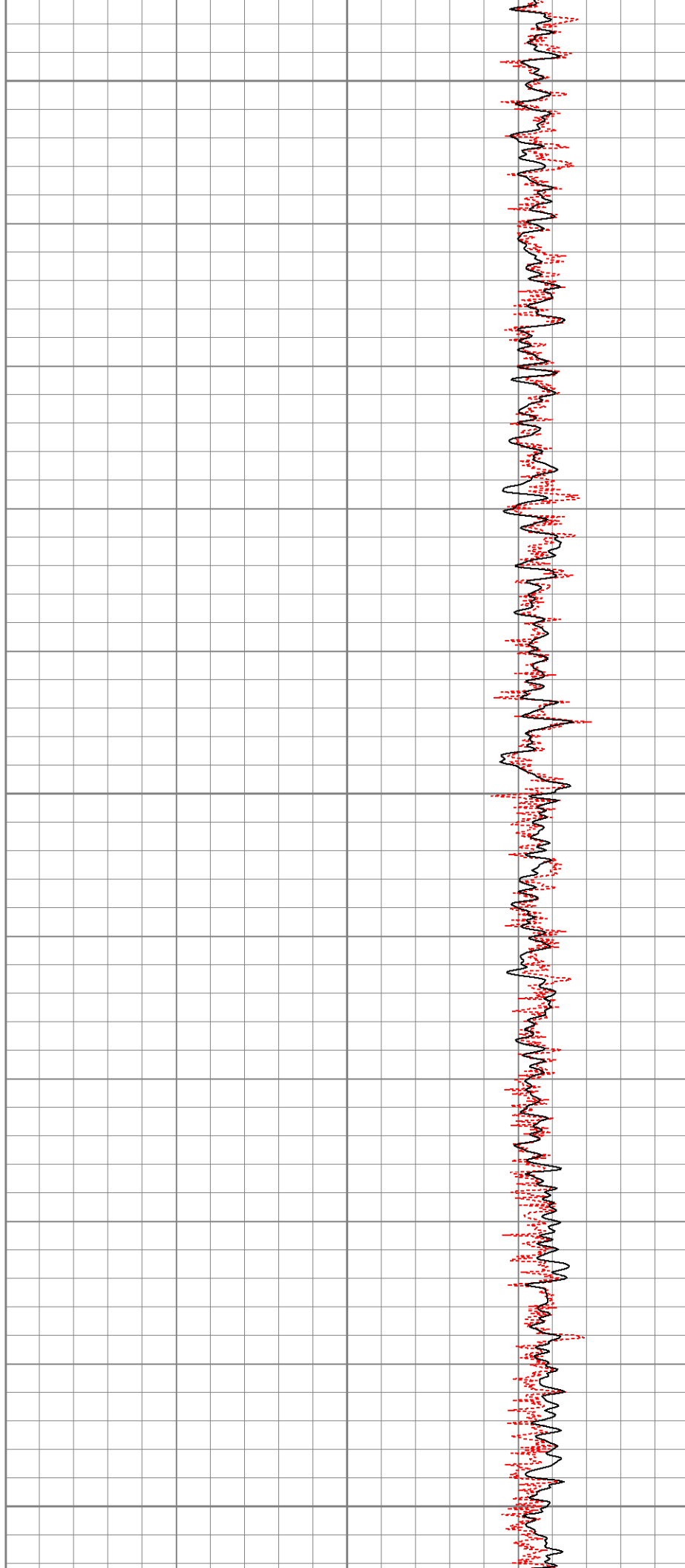


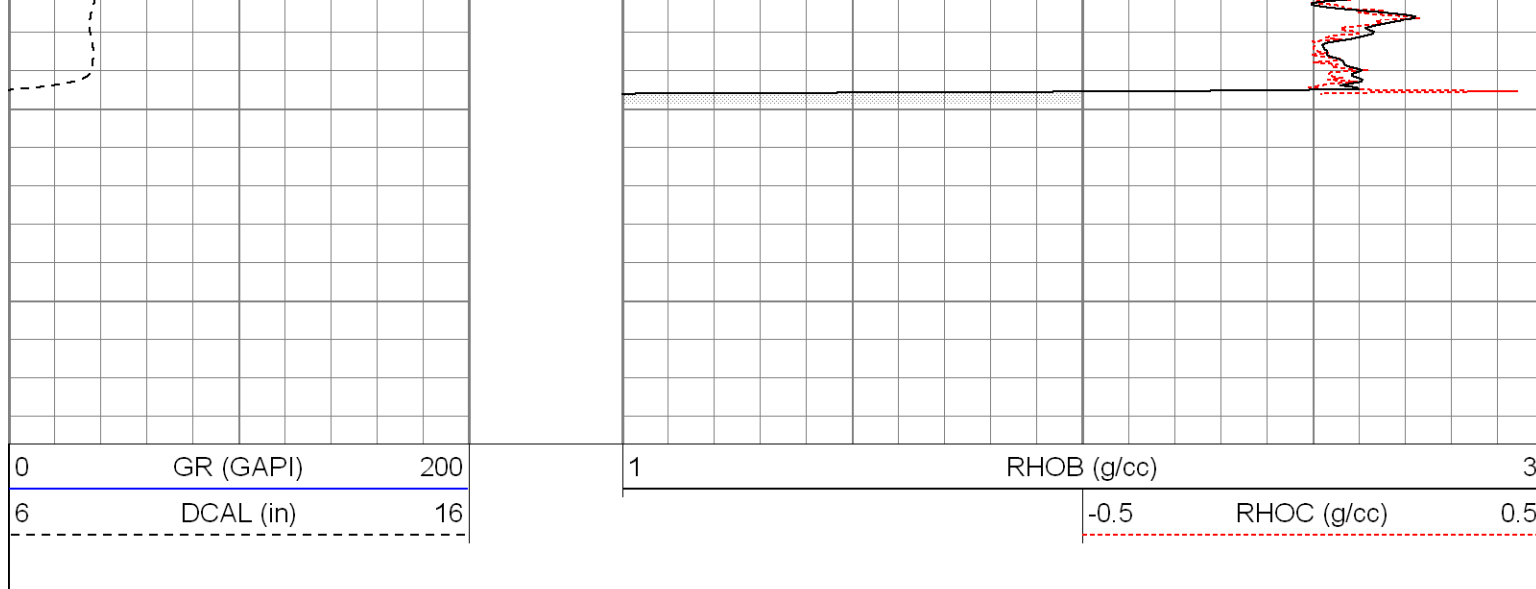


800

850

900





Calibration Report

Database File: sayulitadi.db
 Dataset Pathname: pass2
 Dataset Creation: Tue Dec 22 13:38:12 2009 by Log Open-Cased 071220

Induction Tool Calibration Report

Serial Number: 121
 Tool Model: GL121
 Downhole Cal Performed: Mon Dec 07 06:31:58 2009
 Surface Cal Performed: Fri Dec 04 08:51:07 2009
 After Survey Verification Performed:

Surface Calibration:	Air	Loop	
Conductivity Reference:	0.000	450.000	mmho
Conductivity Reading:	0.005	0.626	V
Internal Reference:	Zero	Cal	
Conductivity Reference:	0.000	500.000	mmho
Conductivity Reading:	0.009	0.631	V

Downhole Calibration:	Internal Zero	Internal Cal	
Conductivity Reference:	3.282	453.999	mmho
Conductivity Reading:	-1.663	456.644	V
Short Normal Reference:	0.000	17.000	Ohm-m
Short Normal Reading:	0.016	0.201	V

Results:	Gain	Offset
Loop Conductivity:	724.756	-3.402
Downhole Correction:	0.983	4.918
Short Normal Resistivity:	91.790	-1.449

Compensated Density Calibration Report

Serial-Model: 2501DHT-DHT
 Source / Verifier: /
 Master Calibration Performed: Fri Dec 04 08:50:44 2009




Master Calibration

	Density		Far Detector	Near Detector	
Magnesium	1.710	g/cc	767.26	303.43	cps
Aluminum	2.590	g/cc	171.91	210.81	cps

Spine Angle = 76.32

Density/Spine Ratio = 0.572

		Size		Reading
Small Ring		8.00	in	6196.63
Large Ring		14.00	in	10494.70
Gamma Ray Calibration Report				
Serial Number:		2001		
Tool Model:		OH		
Performed:		Fri Dec 04 08:49:38 2009		
Calibrator Value:		1.0	GAPI	
Background Reading:		0.0	cps	
Calibrator Reading:		1.0	cps	
Sensitivity:		0.2500	GAPI/cps	

Sensor	Offset (ft)	Schematic	Description	Len (ft)	OD (in)	Wt (lb)
GR	26.85		None	0.75	1.50	5.00
			GR-OH (2001) 2001	3.56	3.25	40.00
			CDL-DHT (2501DHT) Digital High Temp CDL Tool	9.69	4.00	201.00
LSD	18.31					
DCAL	18.02					
SSD	17.77					
HEADVOLT	16.00					
DIC	6.89		IEL-GL121 (121)	16.00	4.00	178.00
SP	1.50					
SN	1.00					

Dataset:	sayulitadi.db: field/well/run1/pass2
Total Length:	30.00 ft
Total Weight:	424.00 lb
O.D.	4.00 in