

GAMMA RAY CCL  
CEMENT BOND VDL

Company NOBLE ENERGY INC.  
Well CONAGRA B 30-31D  
Field WATTENBERG

County WELD  
State COLORADO

Location: API # : 05-12326897-00  
Other Services

SHL: 1914' FUL & 631' FUL SWNW  
BHL: 1497' FUL & 595' FUL NWNW  
SEC 30 TWP 6N R3E 64W  
Elevation 4684  
K 6 4697  
D 6 4684

Company NOBLE ENERGY INC.  
Well CONAGRA B 30-31D  
County WELD  
State COLORADO  
Location: API # : 05-12326897-00  
Other Services

SHL: 1914' FUL & 631' FUL SWNW  
BHL: 1497' FUL & 595' FUL NWNW  
SEC 30 TWP 6N R3E 64W  
Elevation 4684  
K 6 4697  
D 6 4684

SHL: 1914' FUL & 631' FUL SWNW  
BHL: 1497' FUL & 595' FUL NWNW  
SEC 30 TWP 6N R3E 64W  
Elevation 4684  
K 6 4697  
D 6 4684

SHL: 1914' FUL & 631' FUL SWNW  
BHL: 1497' FUL & 595' FUL NWNW  
SEC 30 TWP 6N R3E 64W  
Elevation 4684  
K 6 4697  
D 6 4684

SHL: 1914' FUL & 631' FUL SWNW  
BHL: 1497' FUL & 595' FUL NWNW  
SEC 30 TWP 6N R3E 64W  
Elevation 4684  
K 6 4697  
D 6 4684

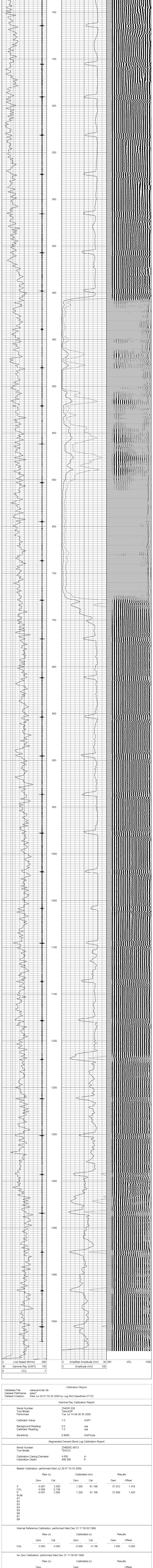
SHL: 1914' FUL & 631' FUL SWNW  
BHL: 1497' FUL & 595' FUL NWNW  
SEC 30 TWP 6N R3E 64W  
Elevation 4684  
K 6 4697  
D 6 4684

All interpretations are opinions based on inferences from electrical or other measurements and we cannot and do not guarantee the accuracy or correctness of any interpretation, and we shall not, except in the case of gross or willful negligence on our part, be liable or responsible for any loss, costs, damages, or expenses incurred or sustained by anyone resulting from any interpretation made by any of our officers, agents or employees. These interpretations are also subject to our general terms and conditions set out in our current Price Schedule.

Comments

THANKS FOR CHOOSING SUPERIOR WELL SERVICES!!!  
WCR 49 & WCR 54, S 4, E INTO  
WESTERN WELL OF TWO WELL PAD  
LOGGED AFTER ANNUAL RIG ON JULY 28, 2009

Database File: caseyannular.db		Dataset Pathname: pass7		Presentation Format: nuexbond		Dataset Creation: Wed Jul 29 07:32:29 2009 by Log Std Casedhole 07122		Charted by: Depth in Feet scaled 1.240	
0	Line Speed (ft/min)	-300	0	Amplified Amplitude (mV)	30	200	VDL	1200	
30	Gamma Ray (GAPI)	130	0	Amplitude (mV)	100				
9	CCL	-1							



0	Line Speed (ft/min)	-300	0	Amplified Amplitude (mV)	30	200	VDL	1200
30	Gamma Ray (GAPI)	130	0	Amplitude (mV)	100			
9	CCL	-1						

Calibration Report

	SUM	
	S1	
	S2	
	S3	
	S4	
	S5	
	S6	
	S7	
	S8	