

Company running Foxes Petroleum Inc.
Well Craig 12-33
Field Wildcat
County Lincoln
State Colorado

Company Running Foxes Petroleum Inc.
Well Craig 12-33
Field Wildcat
County Lincoln State Colorado

Location: API #: 05 073 06365

1982' FSL & 560' FWL

SEC 33 TWP 13S RGE 55W

Other Services
None

Permanent Datum Ground Level Elevation 5067'
Log Measured From Kelly Bushing 13' AGL
Drilling Measured From Kelly Bushing

Elevation
K.B. 5079'
D.F. 5078'
G.L. 5067'

Date 10-31-09

Run Number	One
Depth Driller	7602'
Depth Logger	7141'
Bottom Logged Interval	7139'
Top Log Interval	2900'
Open Hole Size	8.75"
Type Fluid	Water
Density / Viscosity	////
Max. Recorded Temp.	////
Estimated Cement Top	3100'
Time Well Ready	ROA
Time Logger on Bottom	7:30 a.m.
Equipment Number	T747
Location	Trinidad, Co.
Recorded By	L. Smith
Witnessed By	Mr. John Abbott
	Mr. Monte Madsen

Borehole Record				Tubing Record			
Run Number	Bit	From	To	Size	Weight	From	To

Casing Record	Size	Wgt/Ft	Top	Bottom
Surface String				
Prot. String				
Production String	7"	#26	0	n/a
Liner				

<<< Fold Here >>>

All interpretations are opinions based on inferences from electrical or other measurements and we cannot and do not guarantee the accuracy or correctness of any interpretation, and we shall not, except in the case of gross or willful negligence on our part, be liable or responsible for any loss, costs, damages, or expenses incurred or sustained by anyone resulting from any interpretation made by any of our officers, agents or employees. These interpretations are also subject to our general terms and conditions set out in our current Price Schedule.

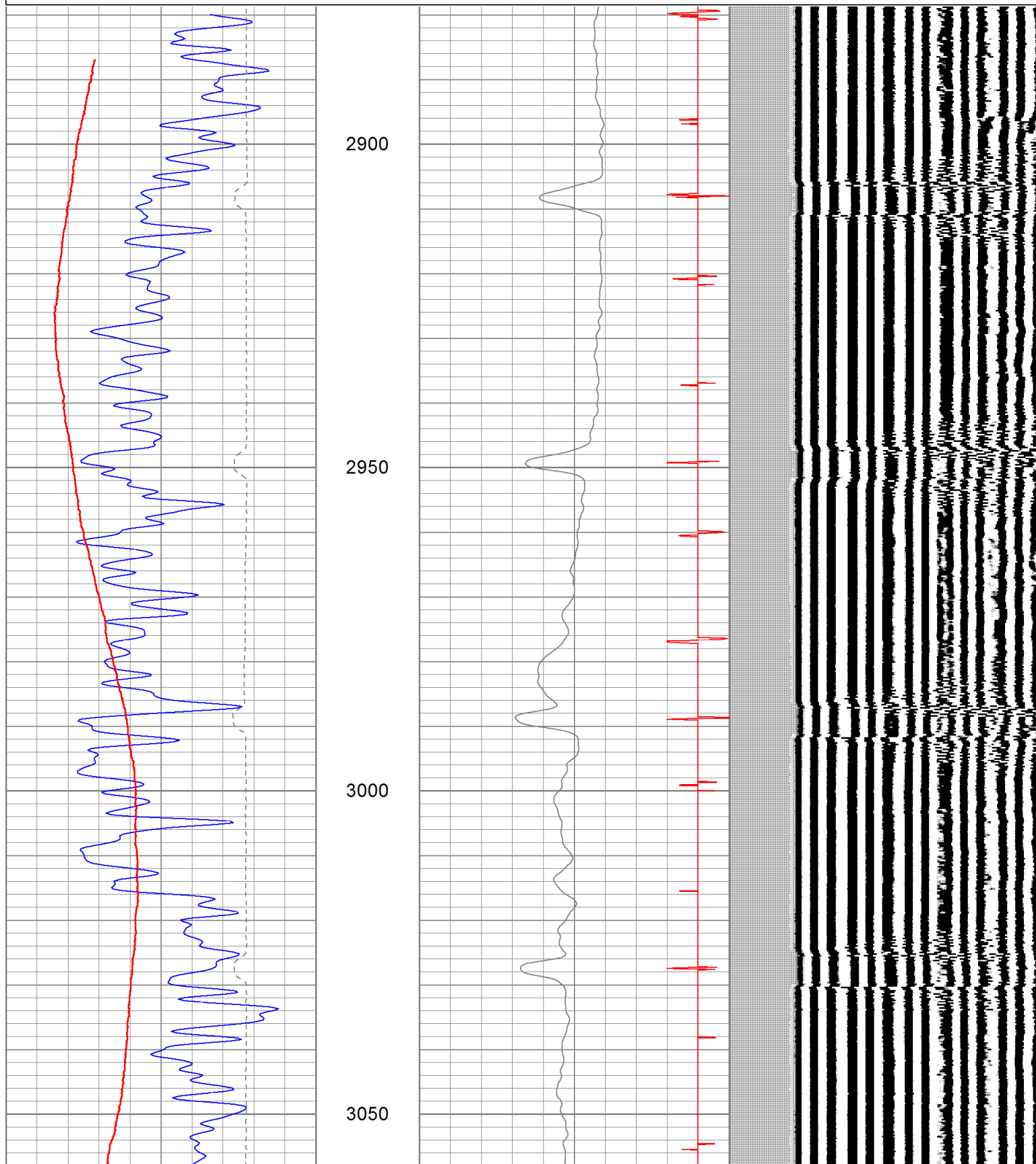
Comments

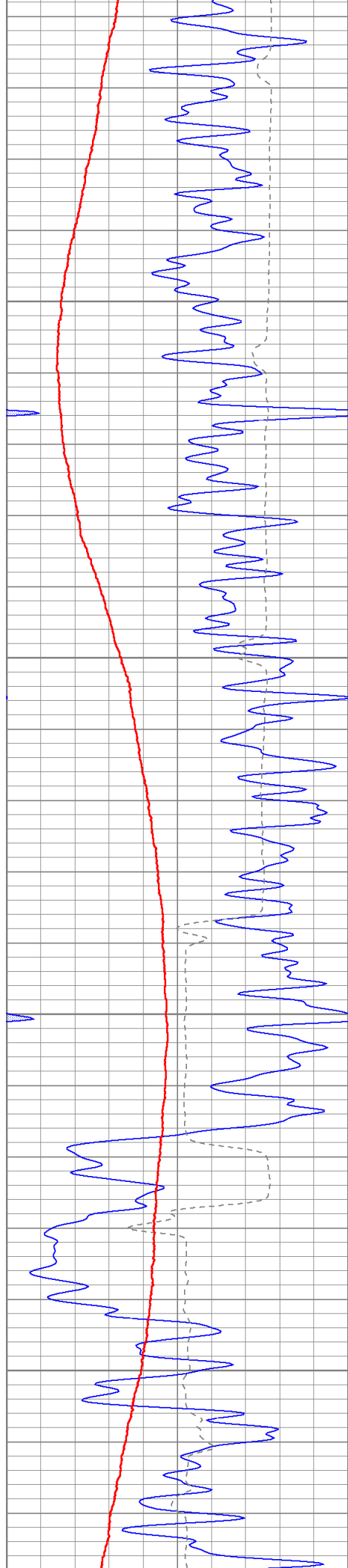
Database File: rfcrraig1233cbl.db
Dataset Pathname: pass5.2
Presentation Format: cbl
Dataset Creation: Sat Oct 31 10:14:34 2009 by Calc Std Casedhole 08121
Charted by: Depth in Feet scaled 1:240

0	GR (GAPI)	150
450	TT3FT (usec)	250
0	DEVI (°)	10

0	AMP3FT (mV)	100
18	Collar Locator	-2
0	AMP3FT (mV)	20

200 variable density 1200





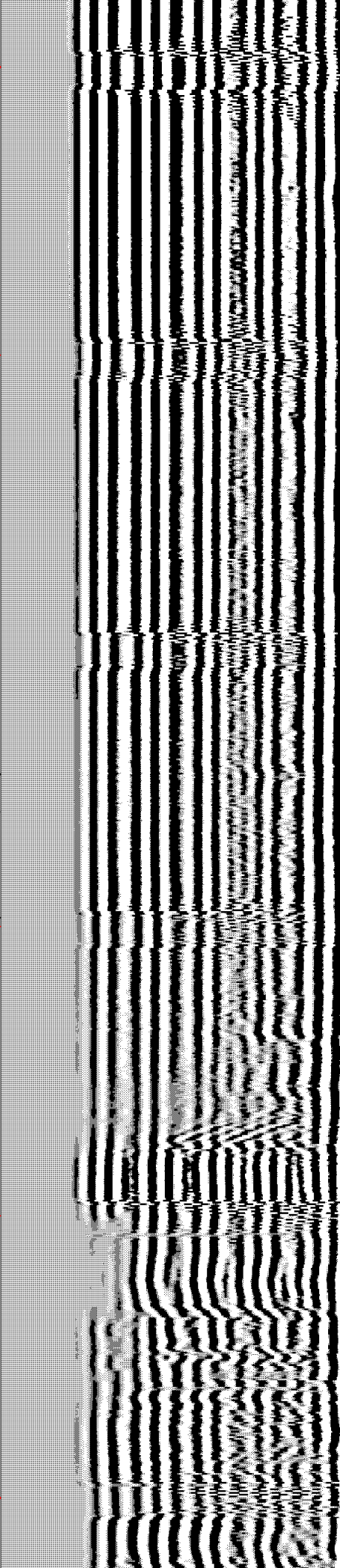
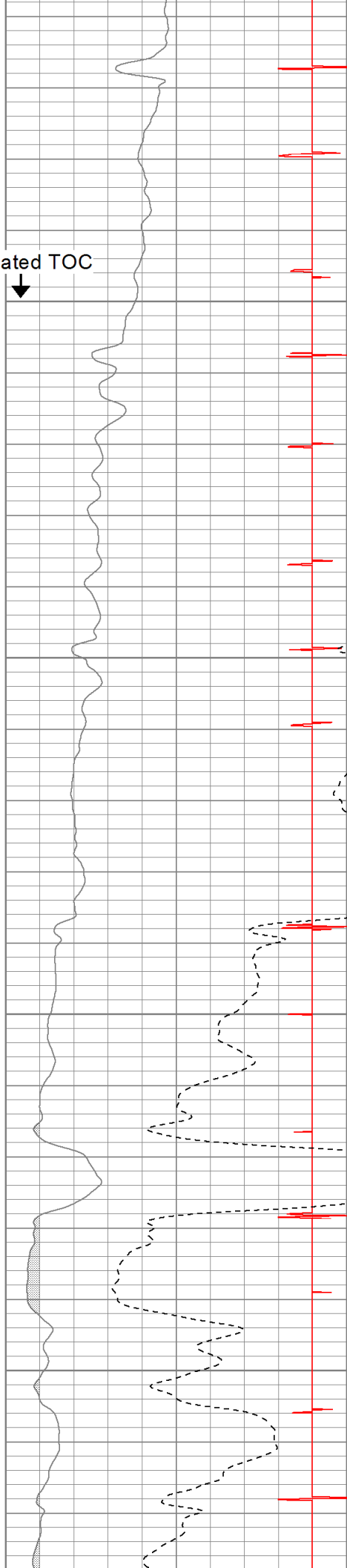
Estimated TOC
↓

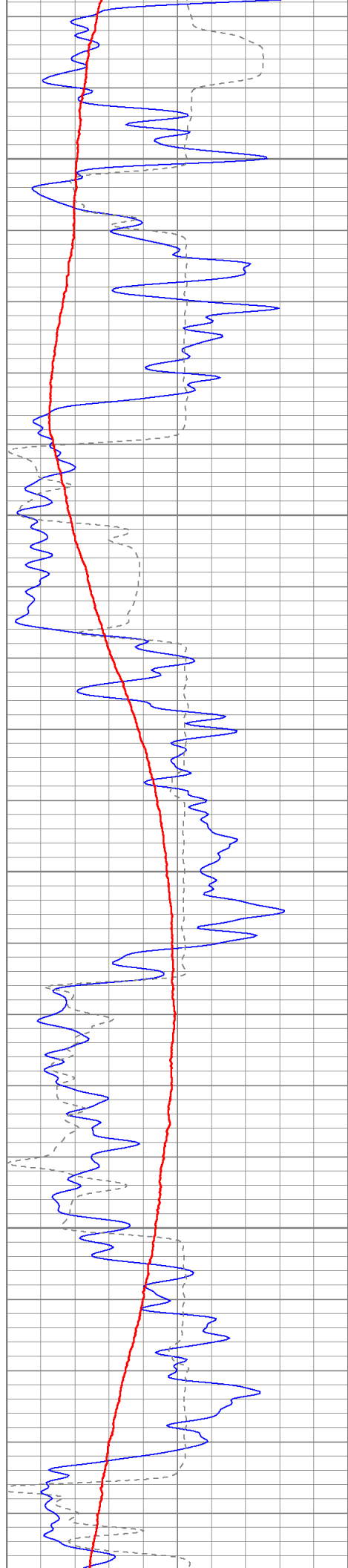
3100

3150

3200

3250



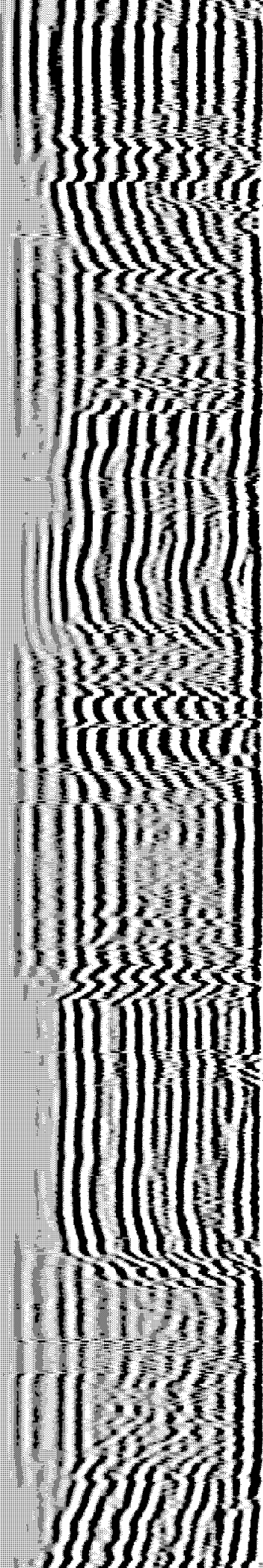


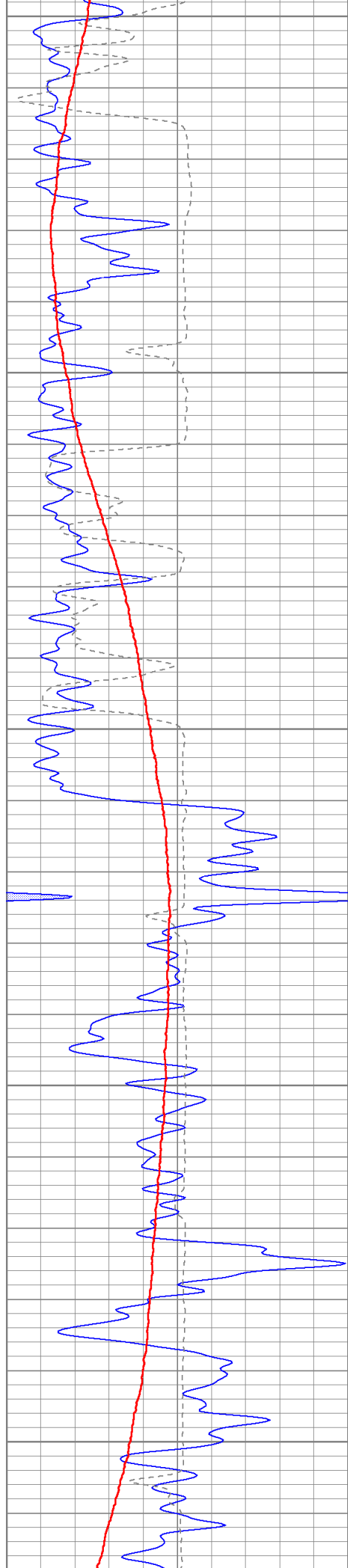
3300

3350

3400

3450





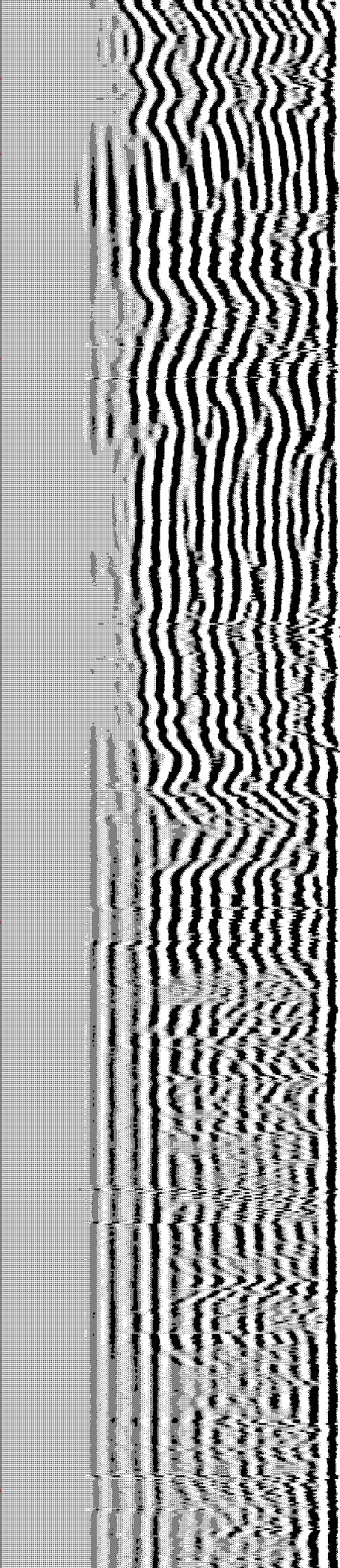
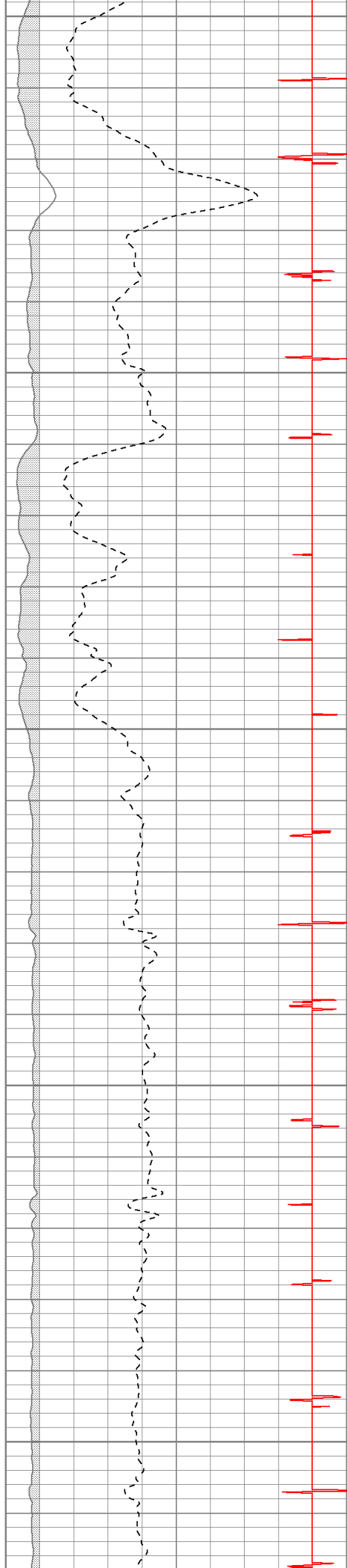
3500

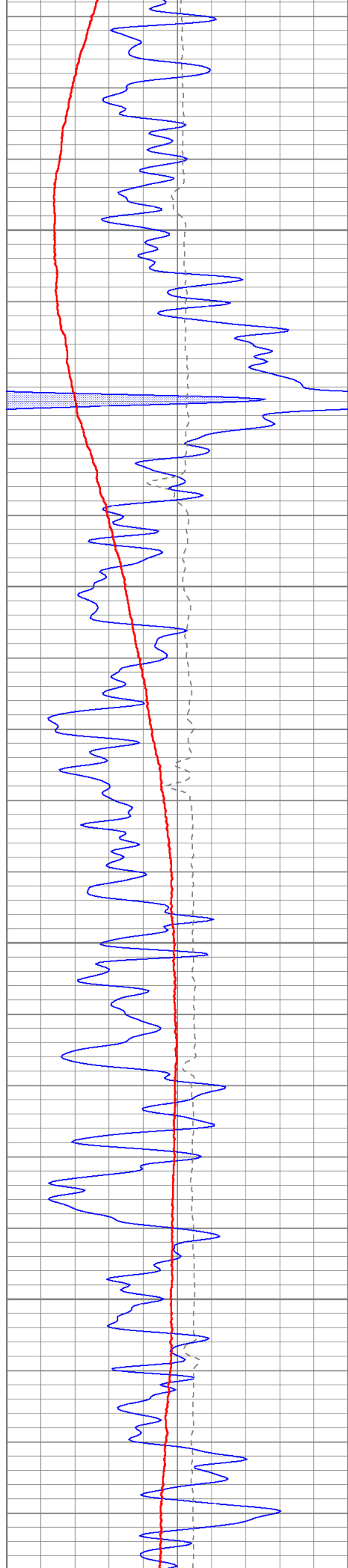
3550

3600

3650

3700



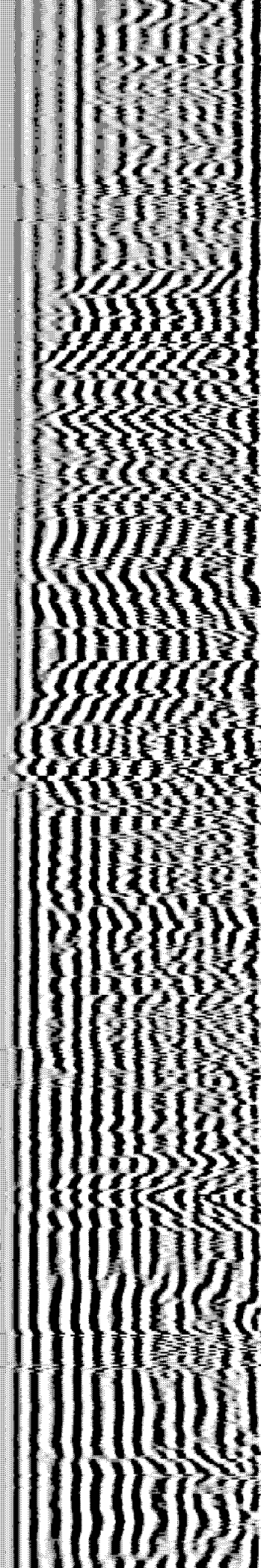
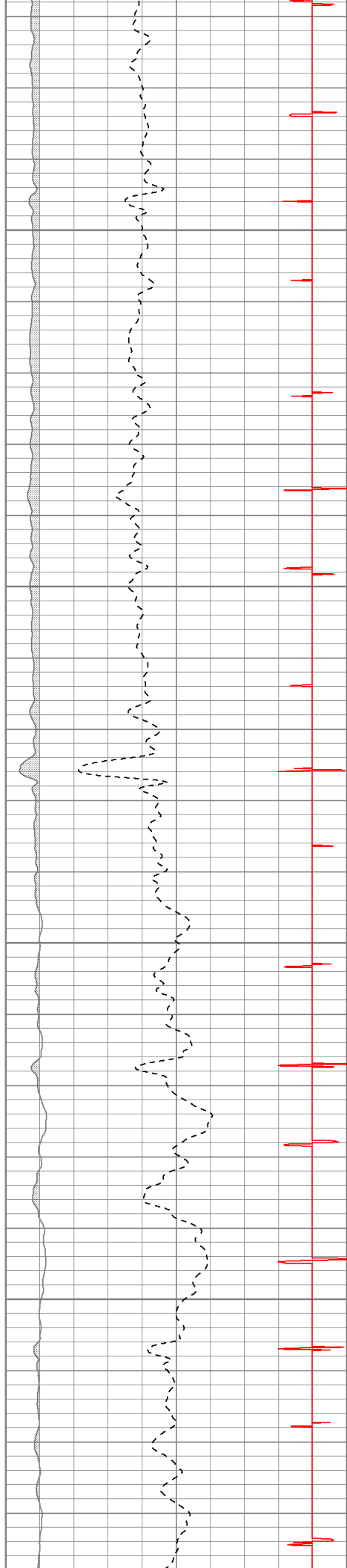


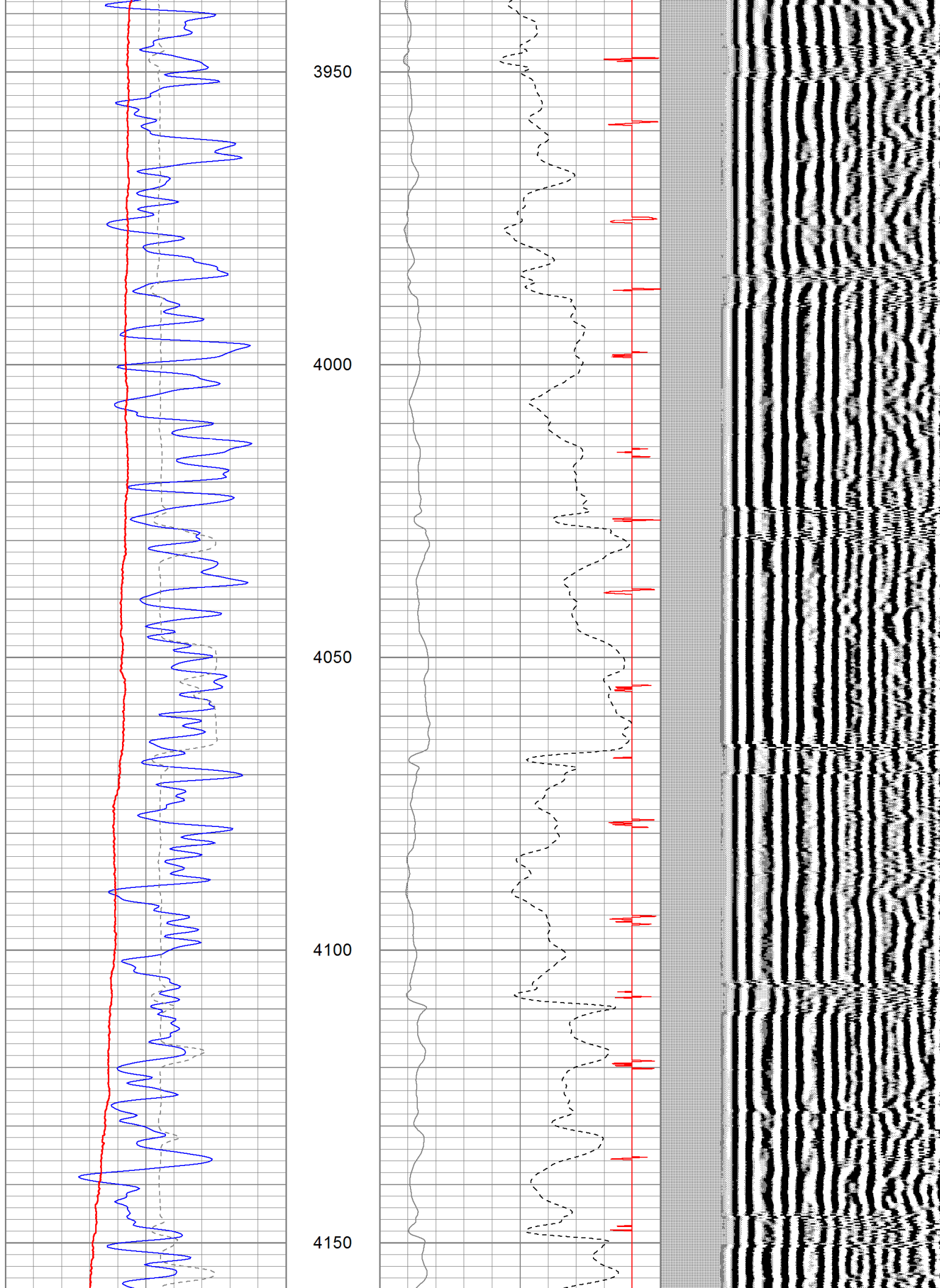
3750

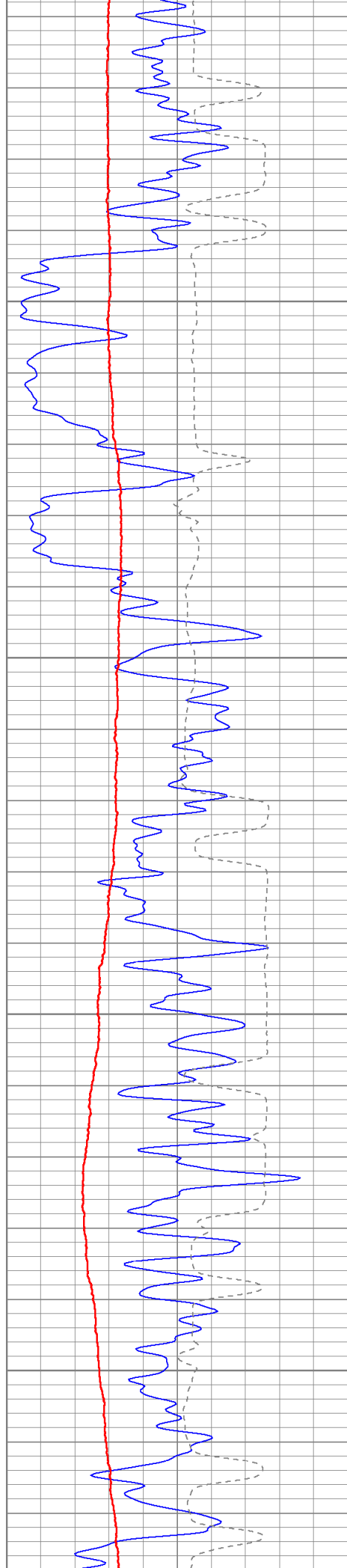
3800

3850

3900





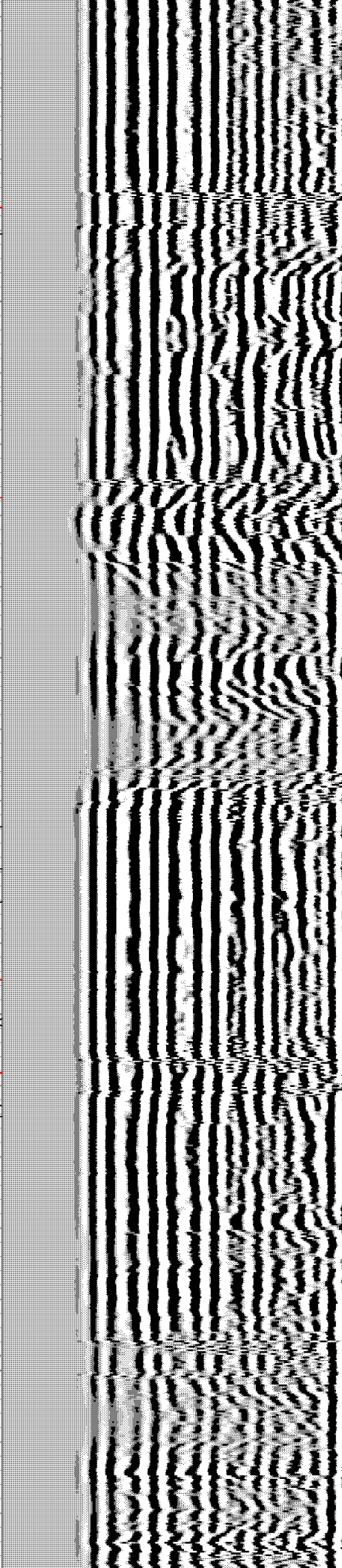
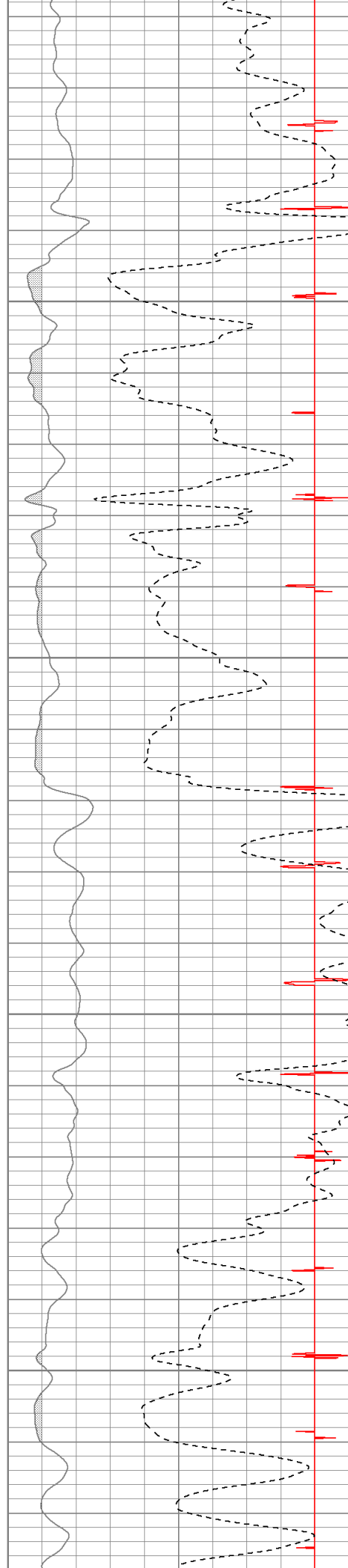


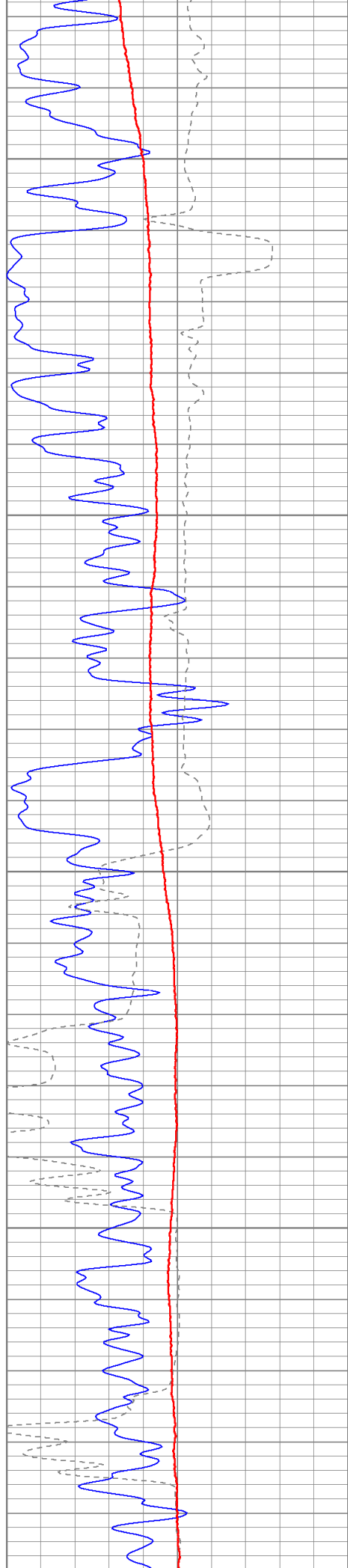
4200

4250

4300

4350



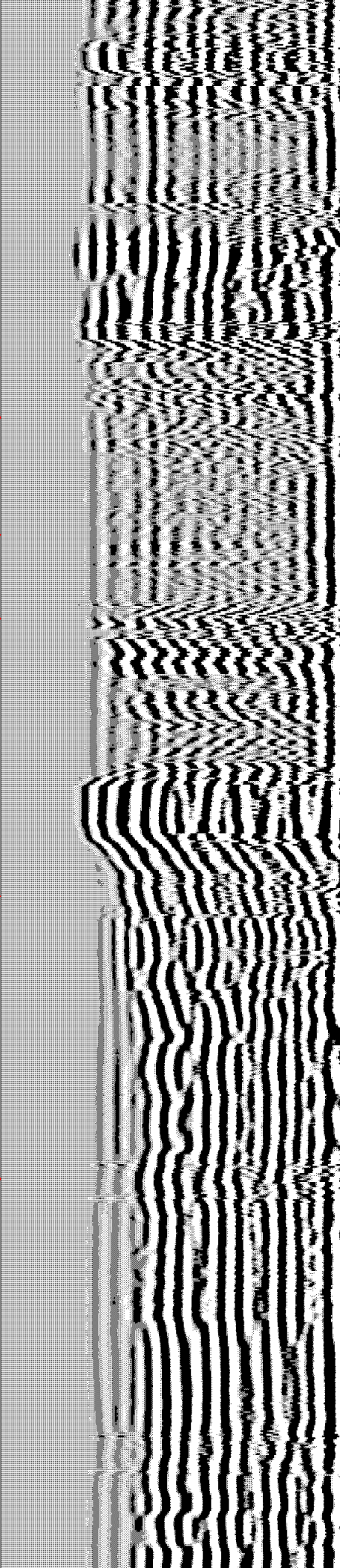
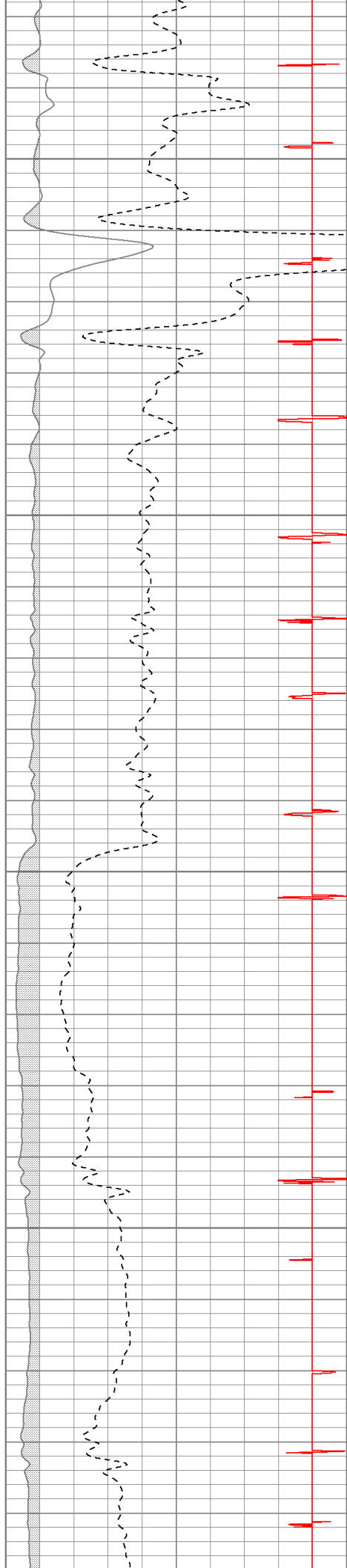


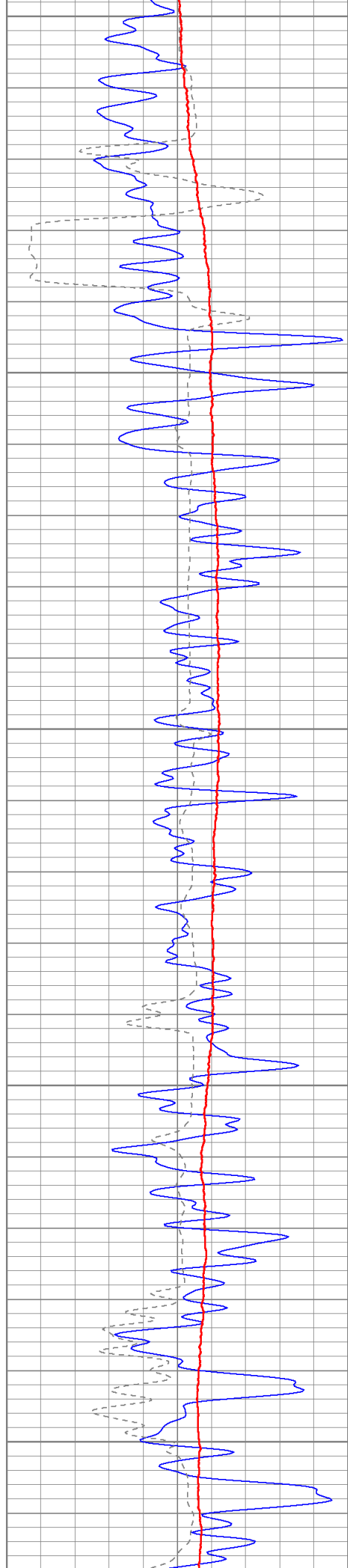
4400

4450

4500

4550





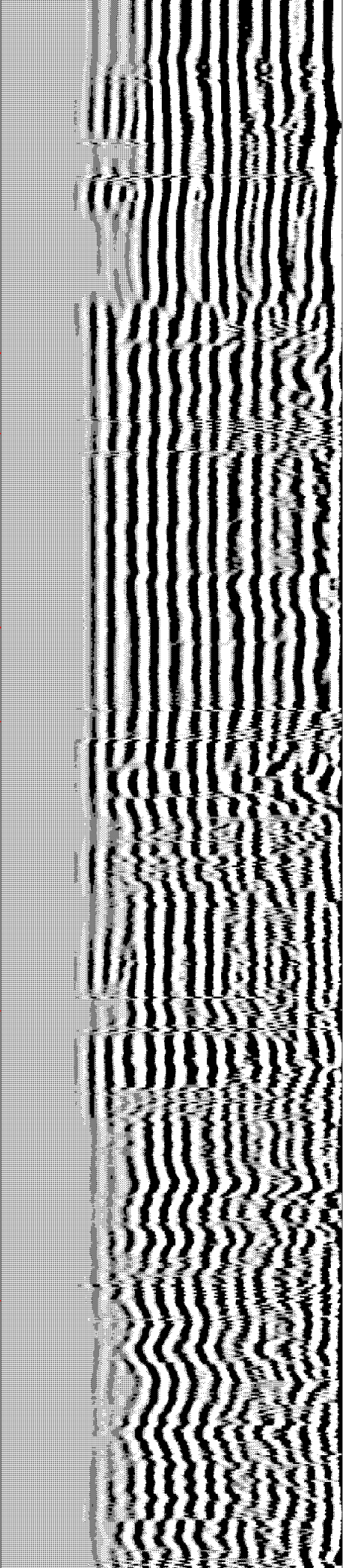
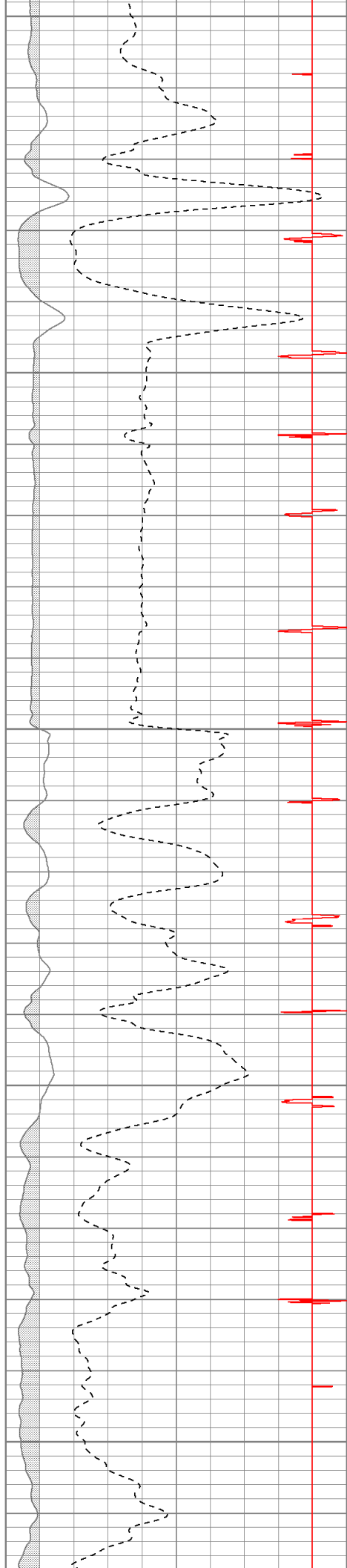
4600

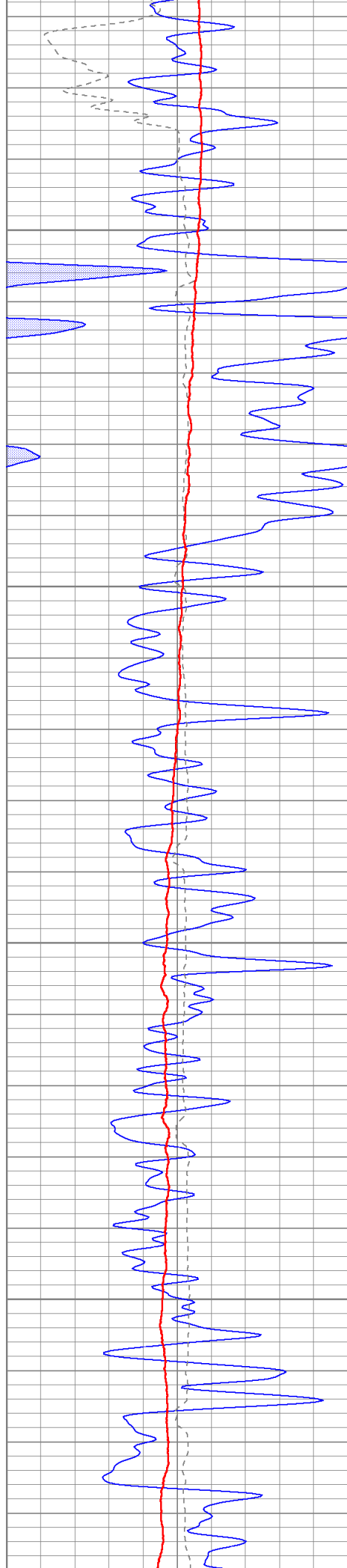
4650

4700

4750

4800



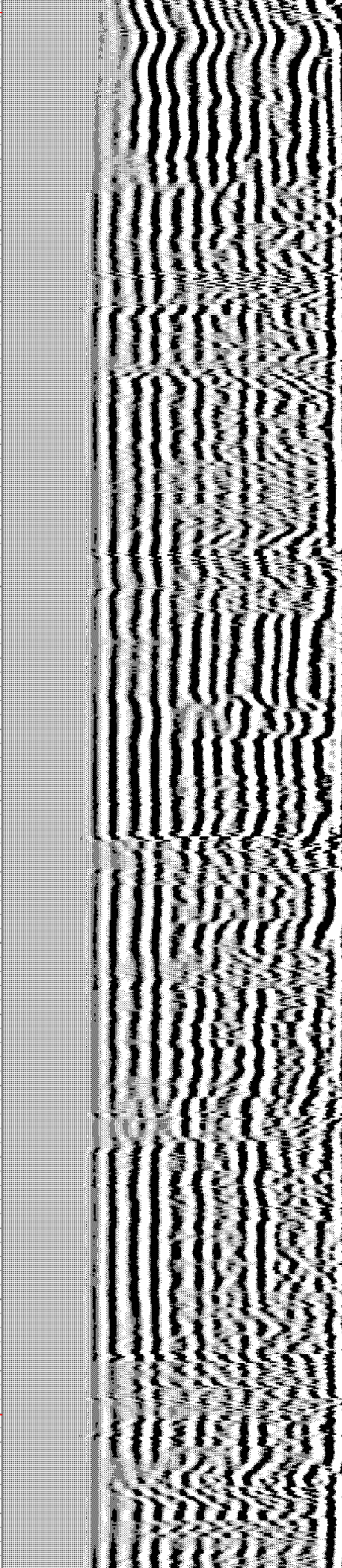
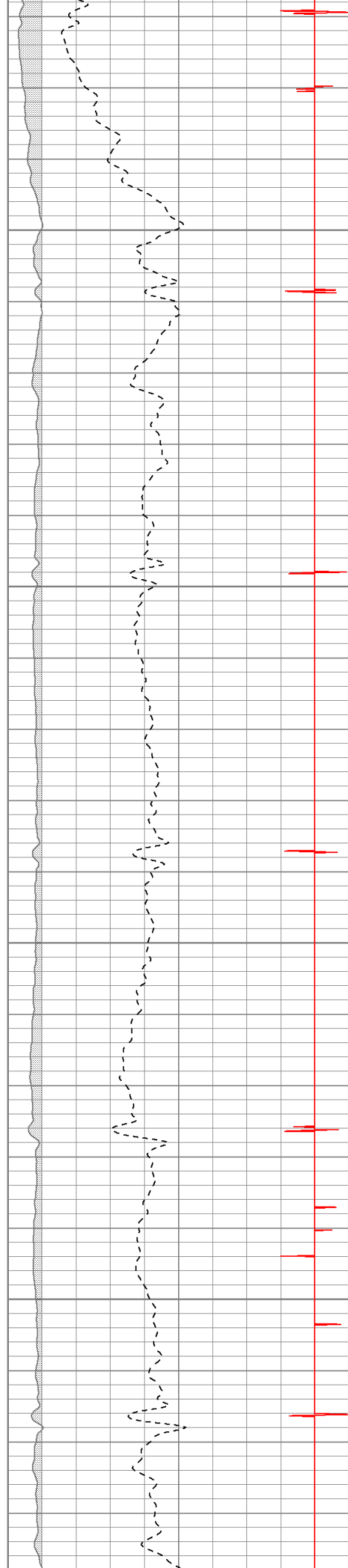


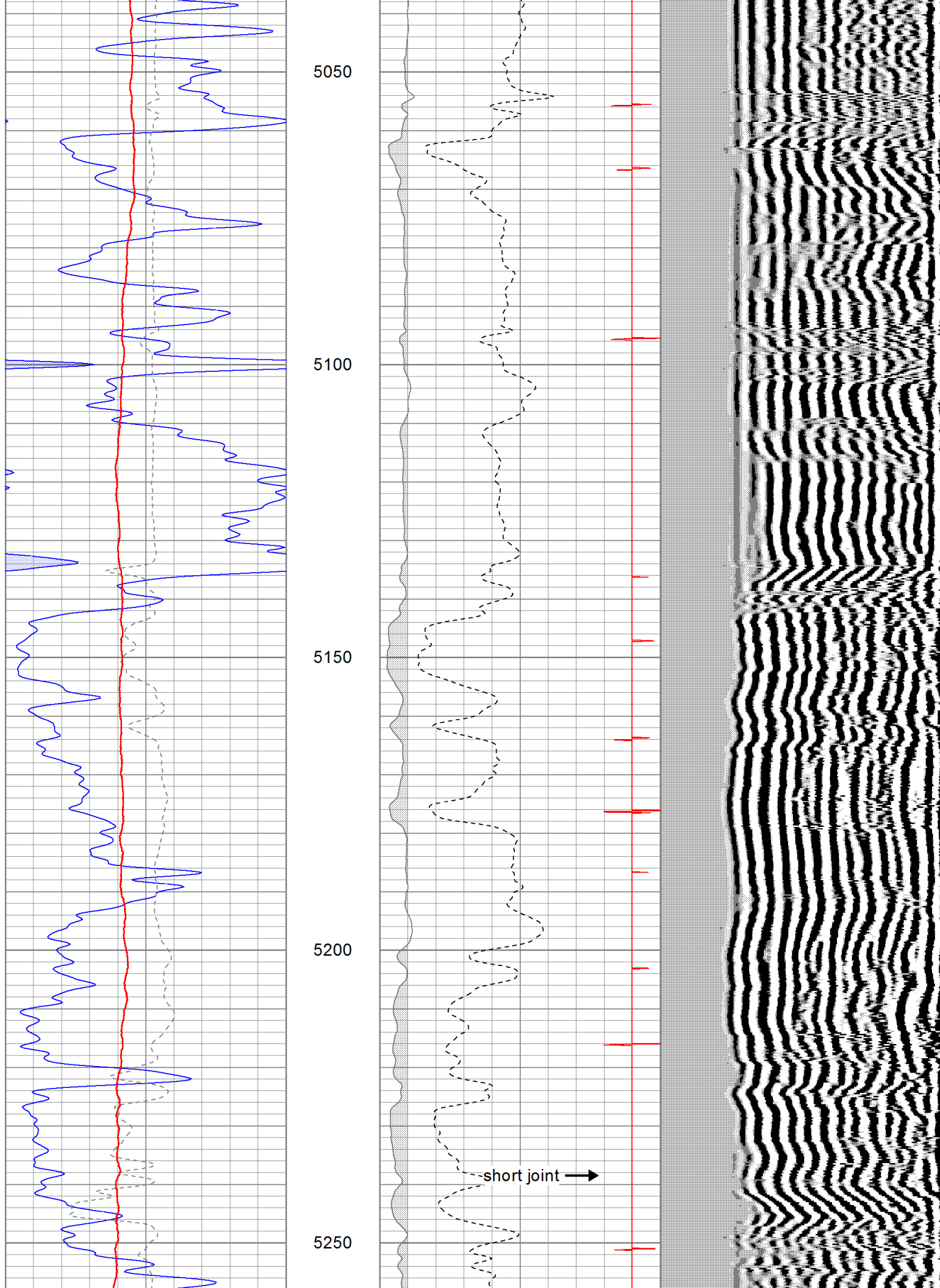
4850

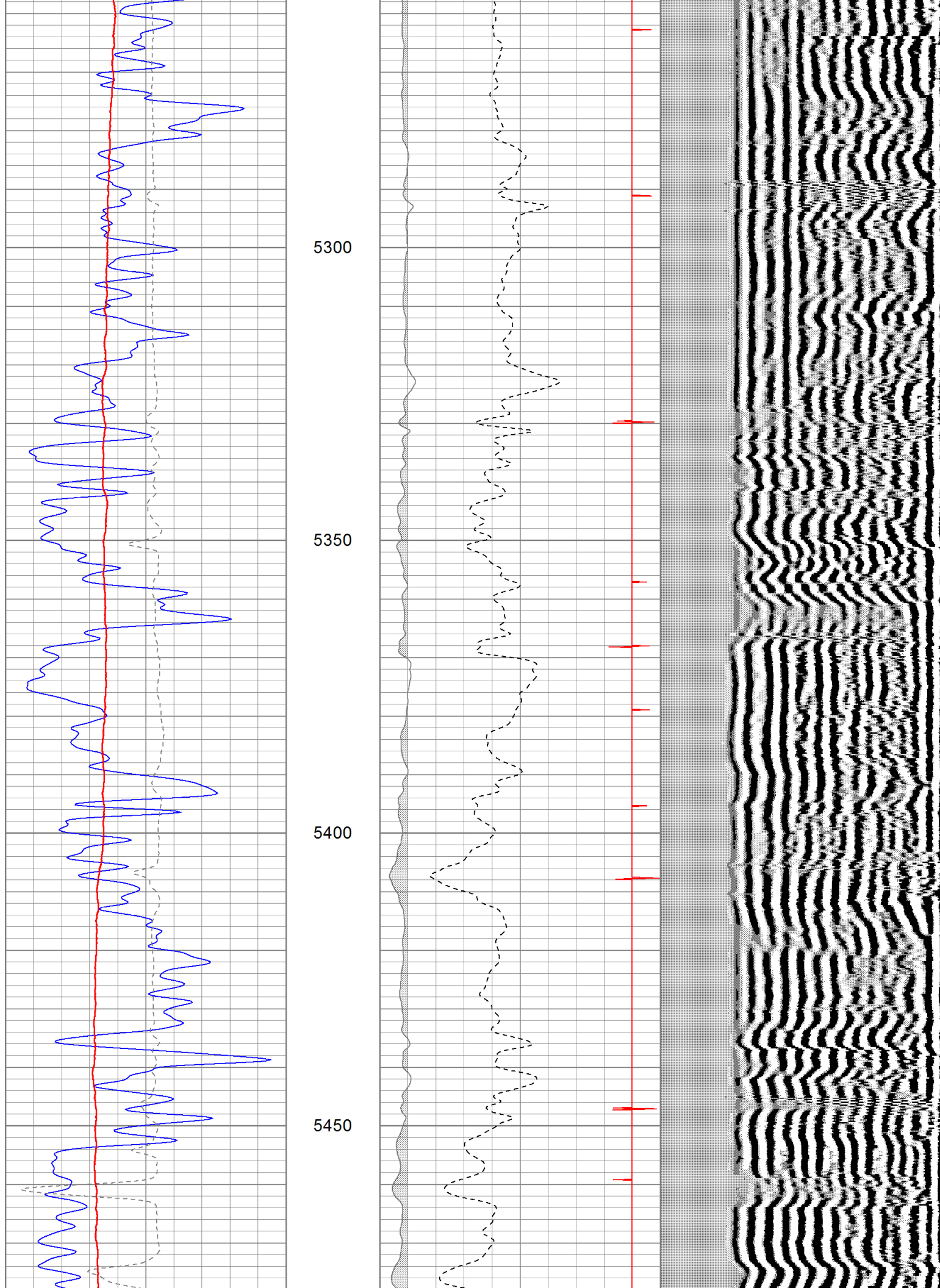
4900

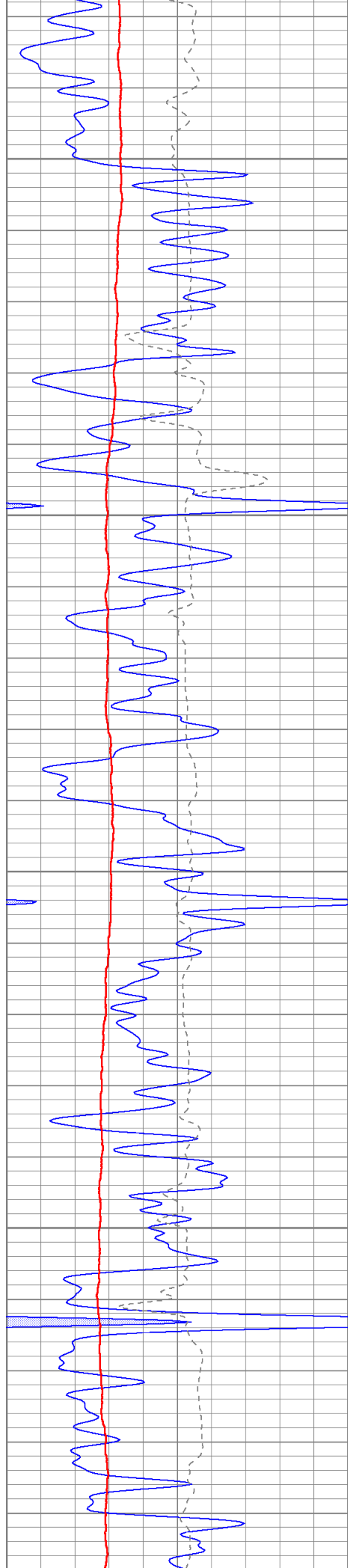
4950

5000







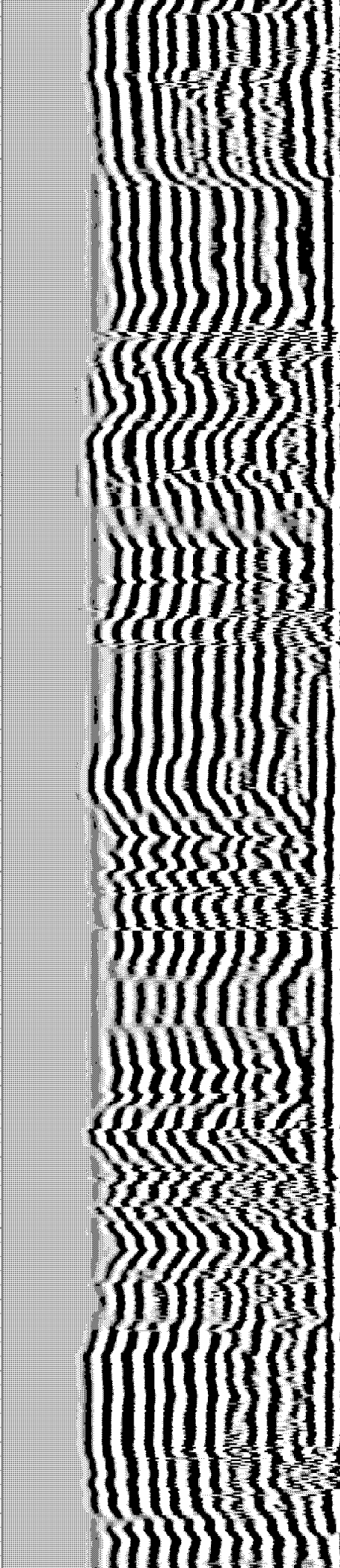
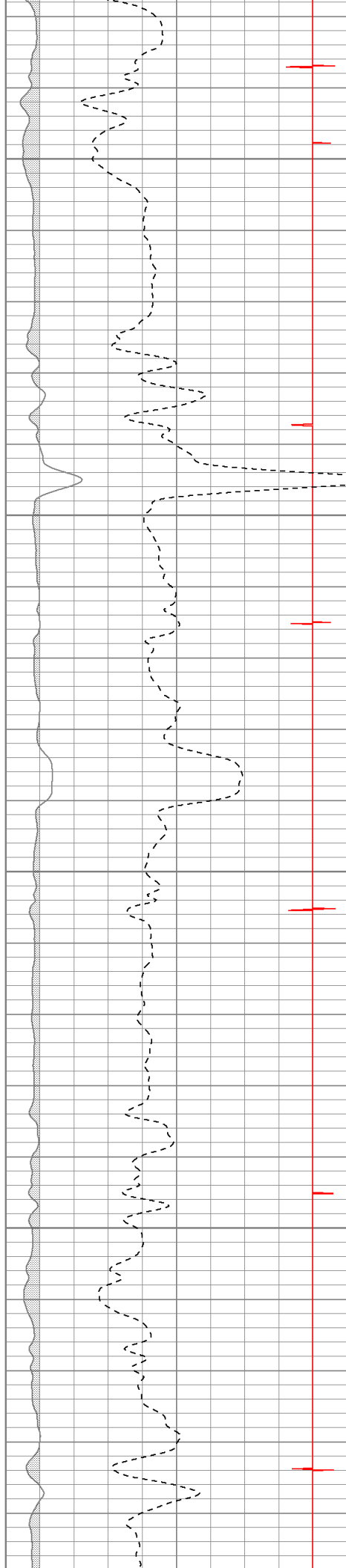


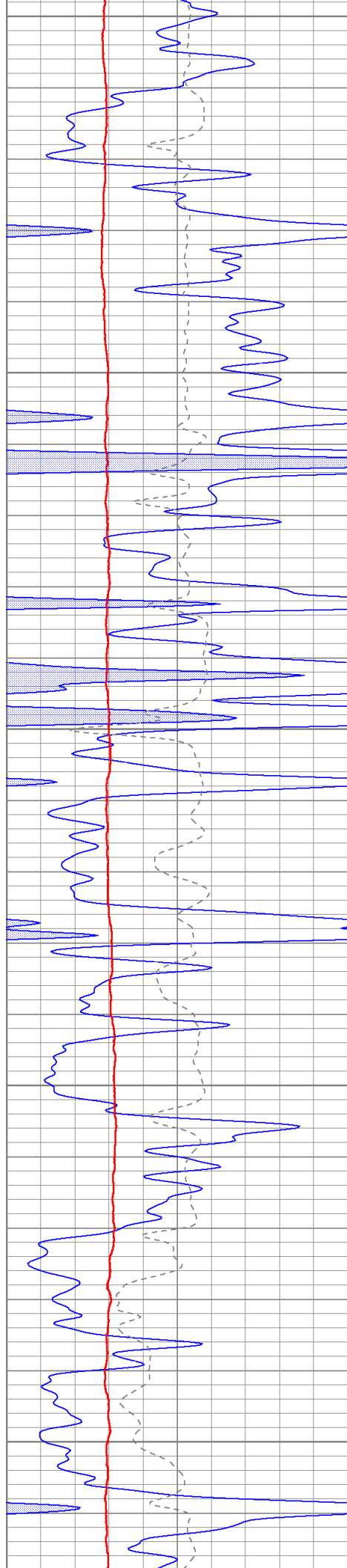
5500

5550

5600

5650





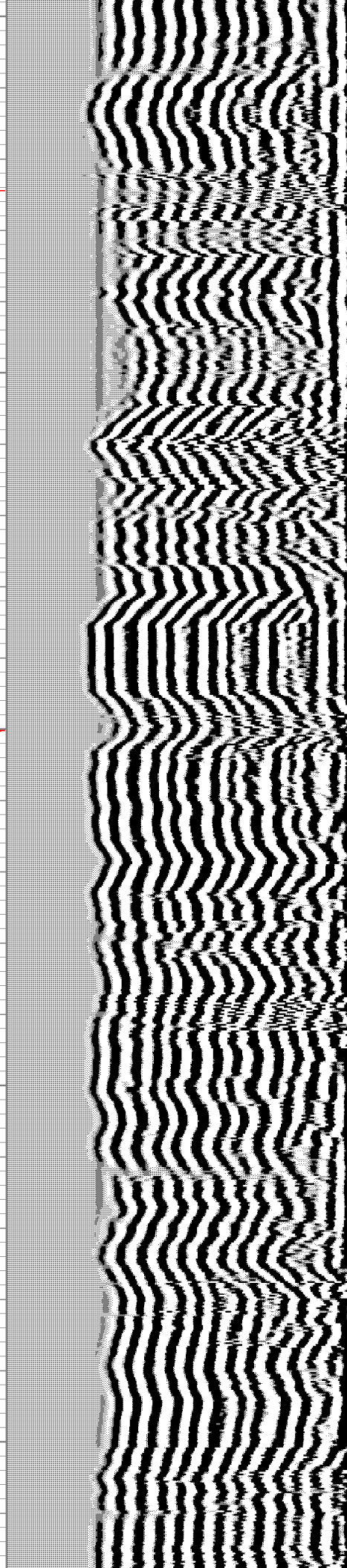
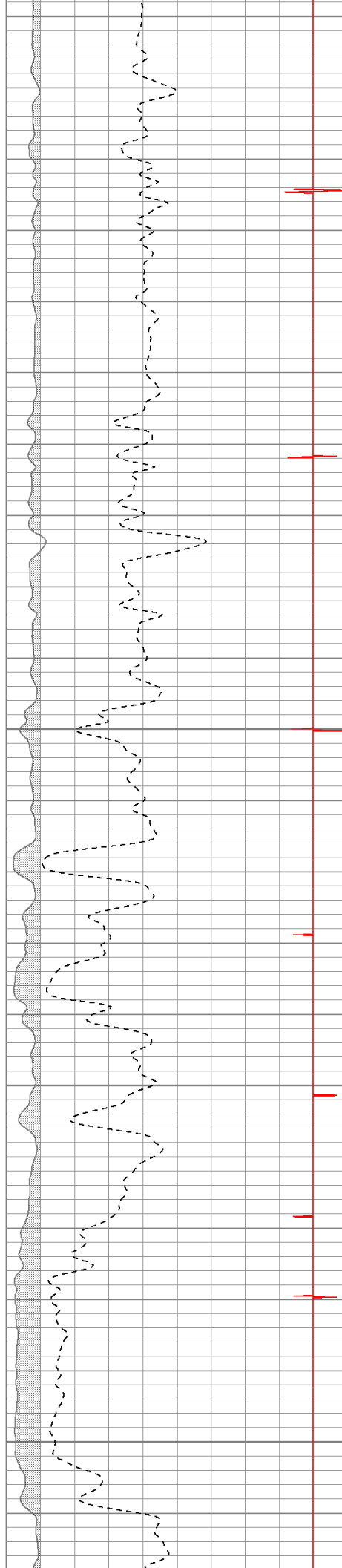
5700

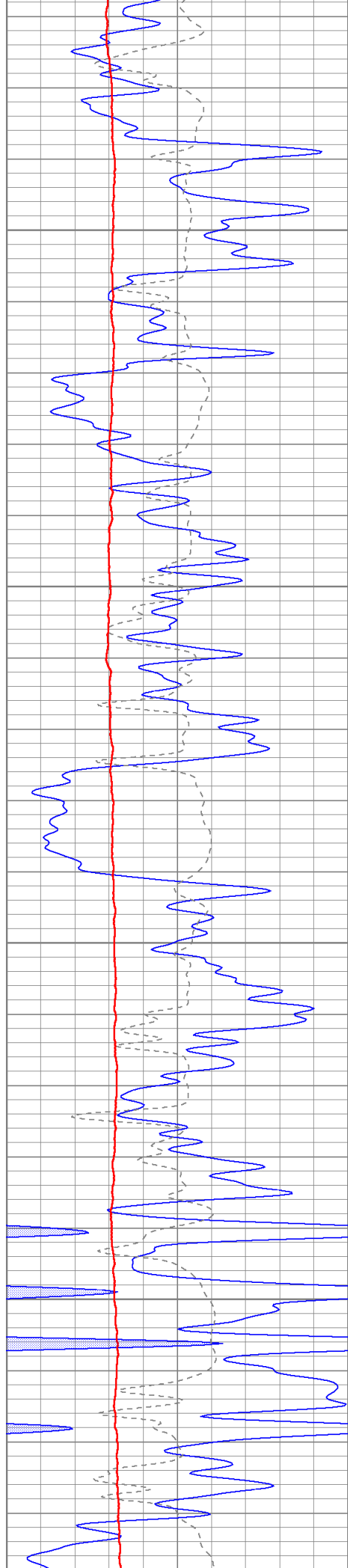
5750

5800

5850

5900



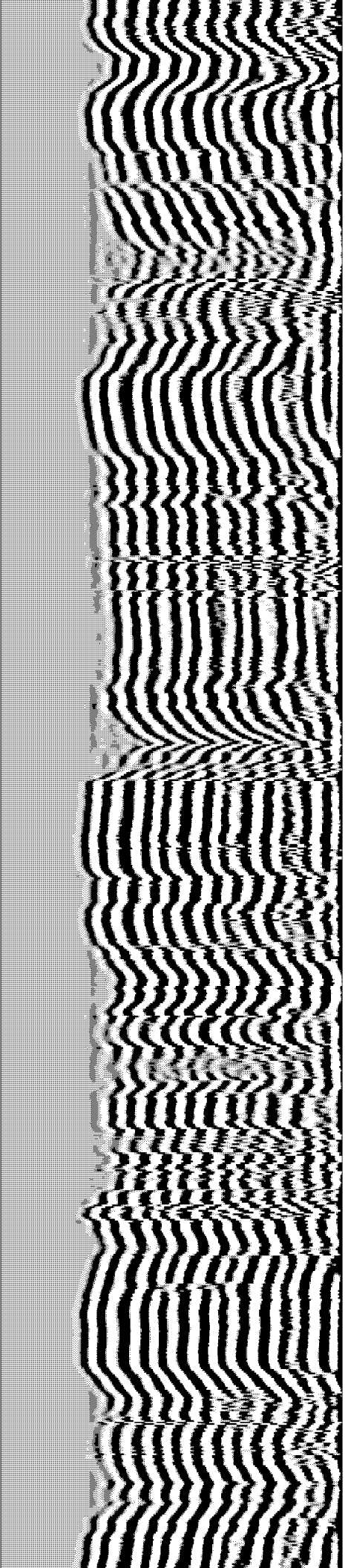
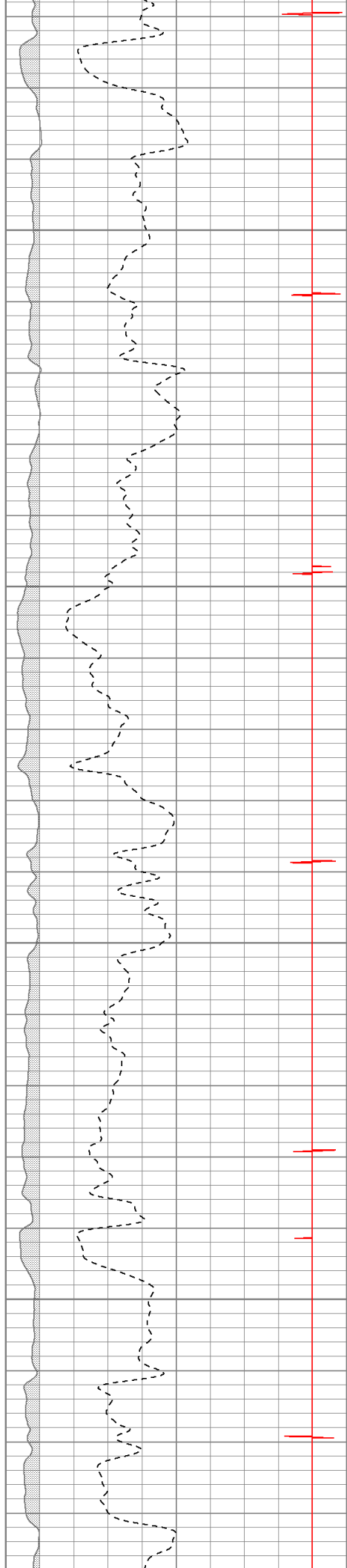


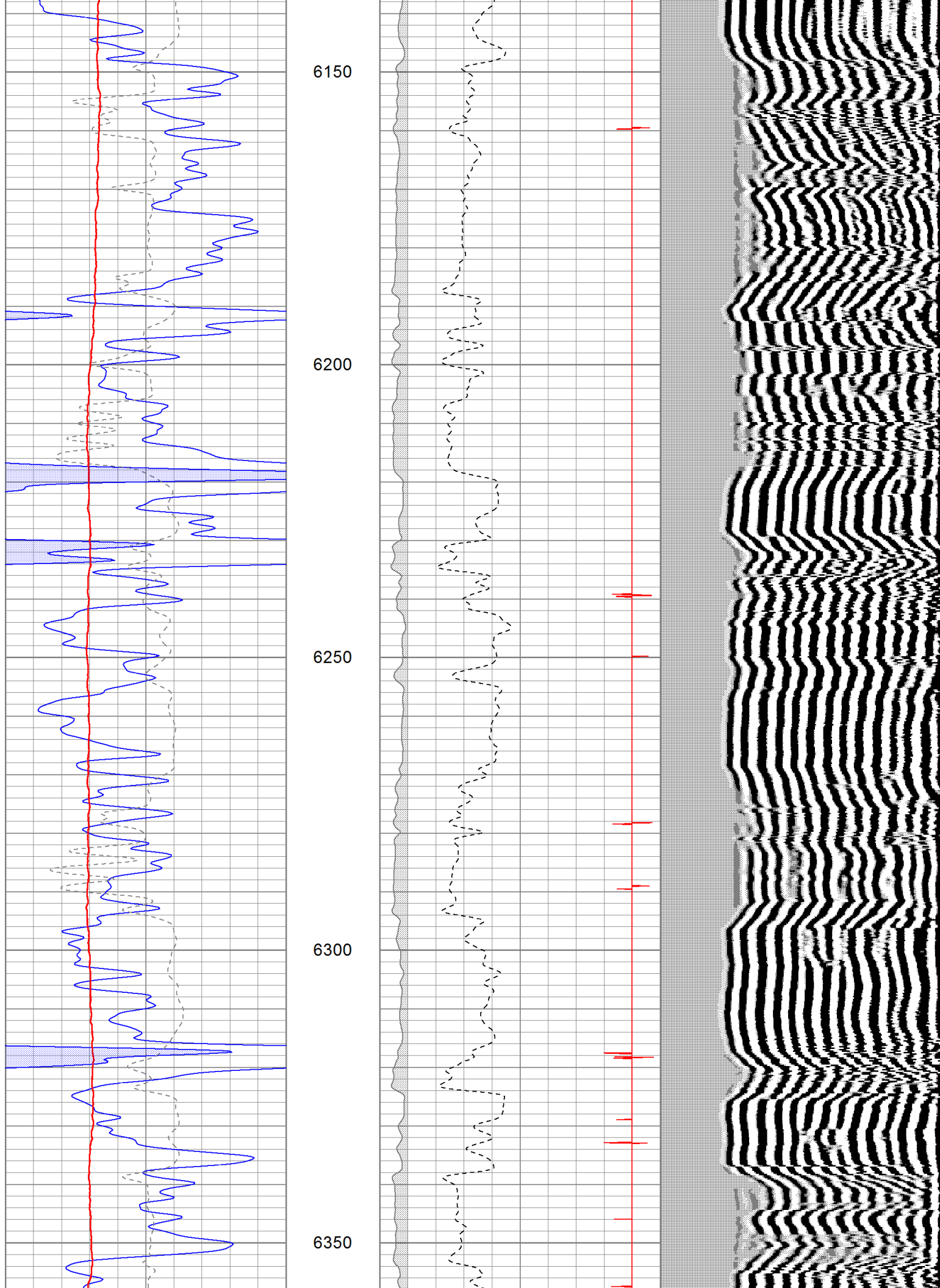
5950

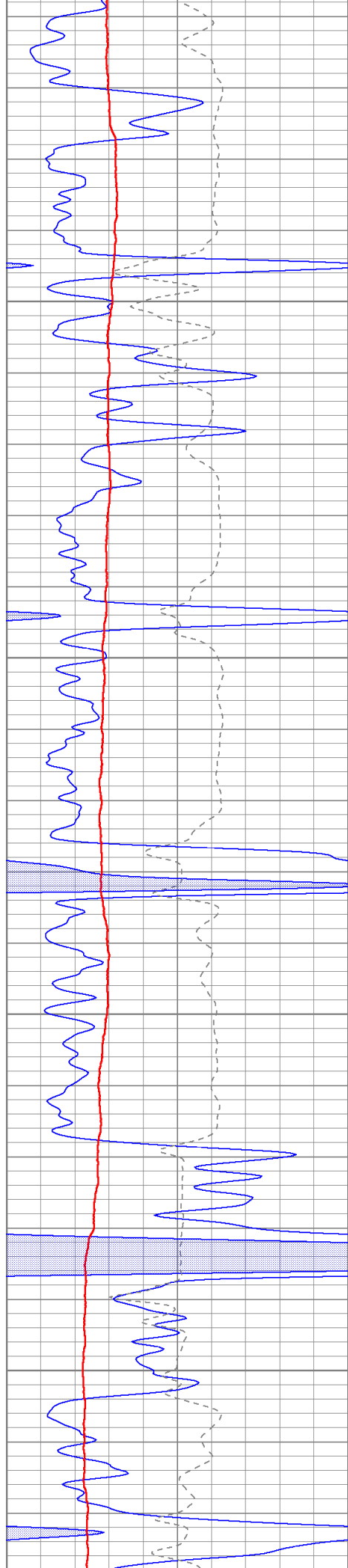
6000

6050

6100





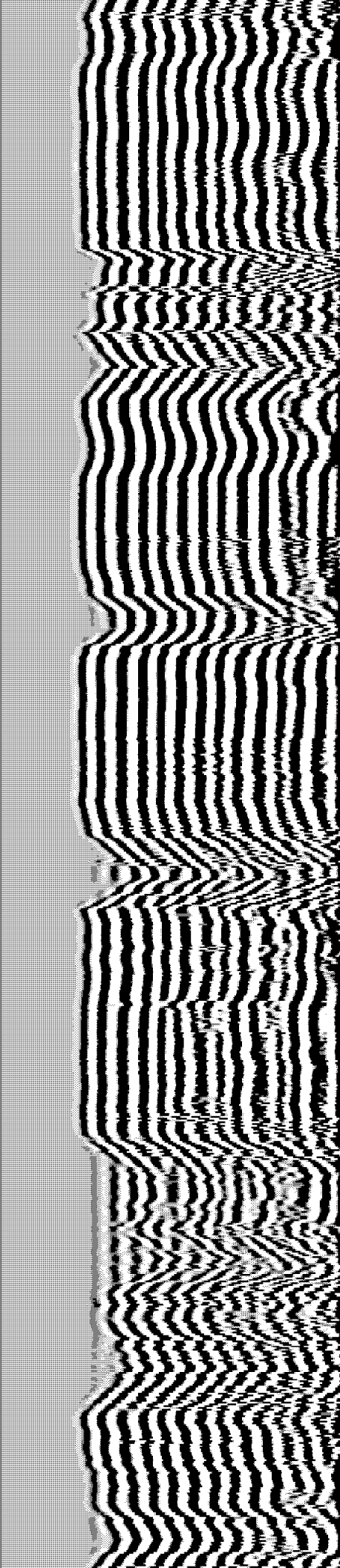
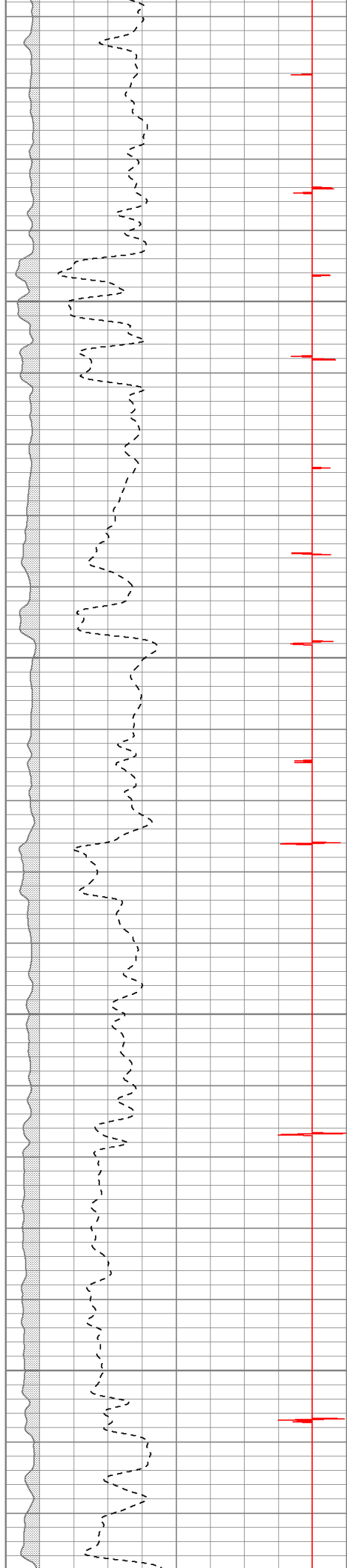


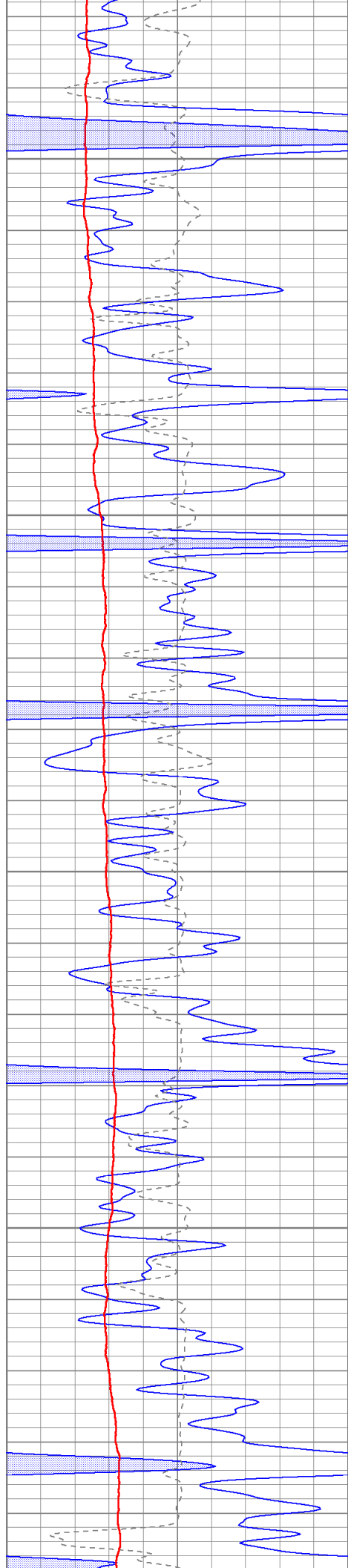
6400

6450

6500

6550



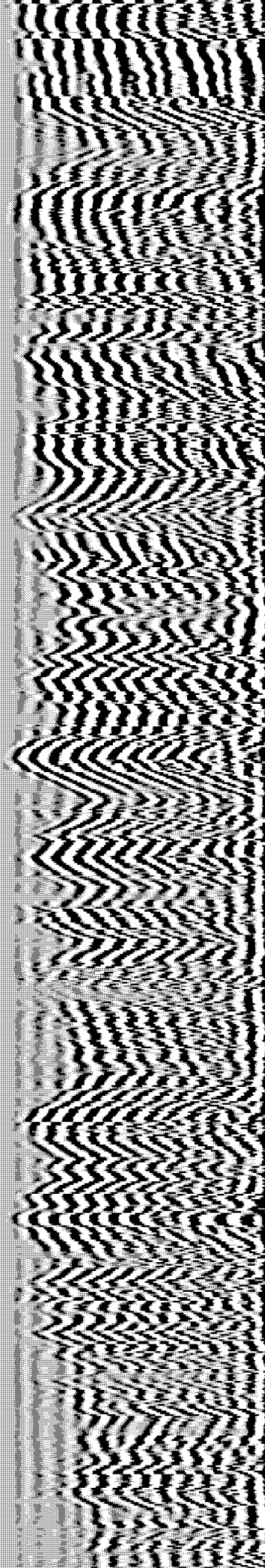
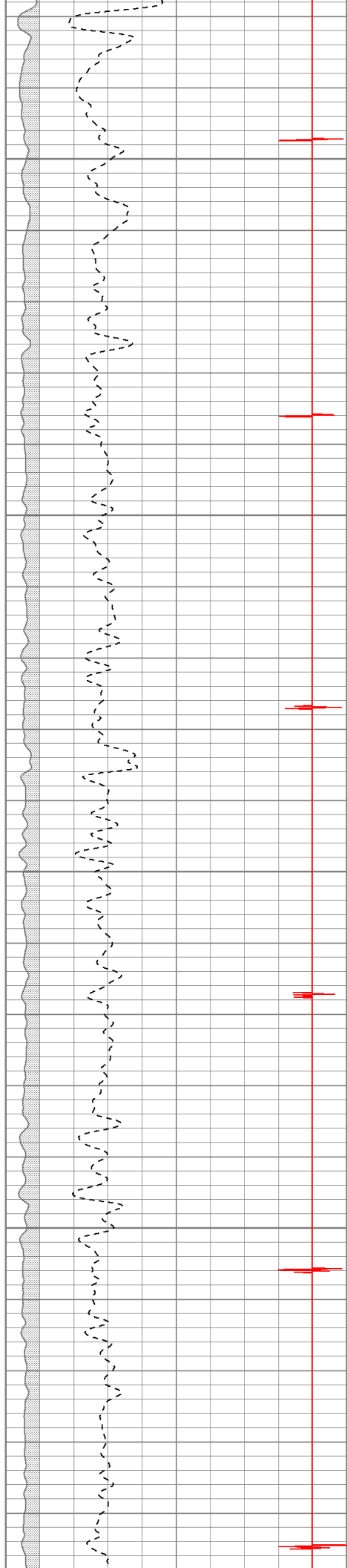


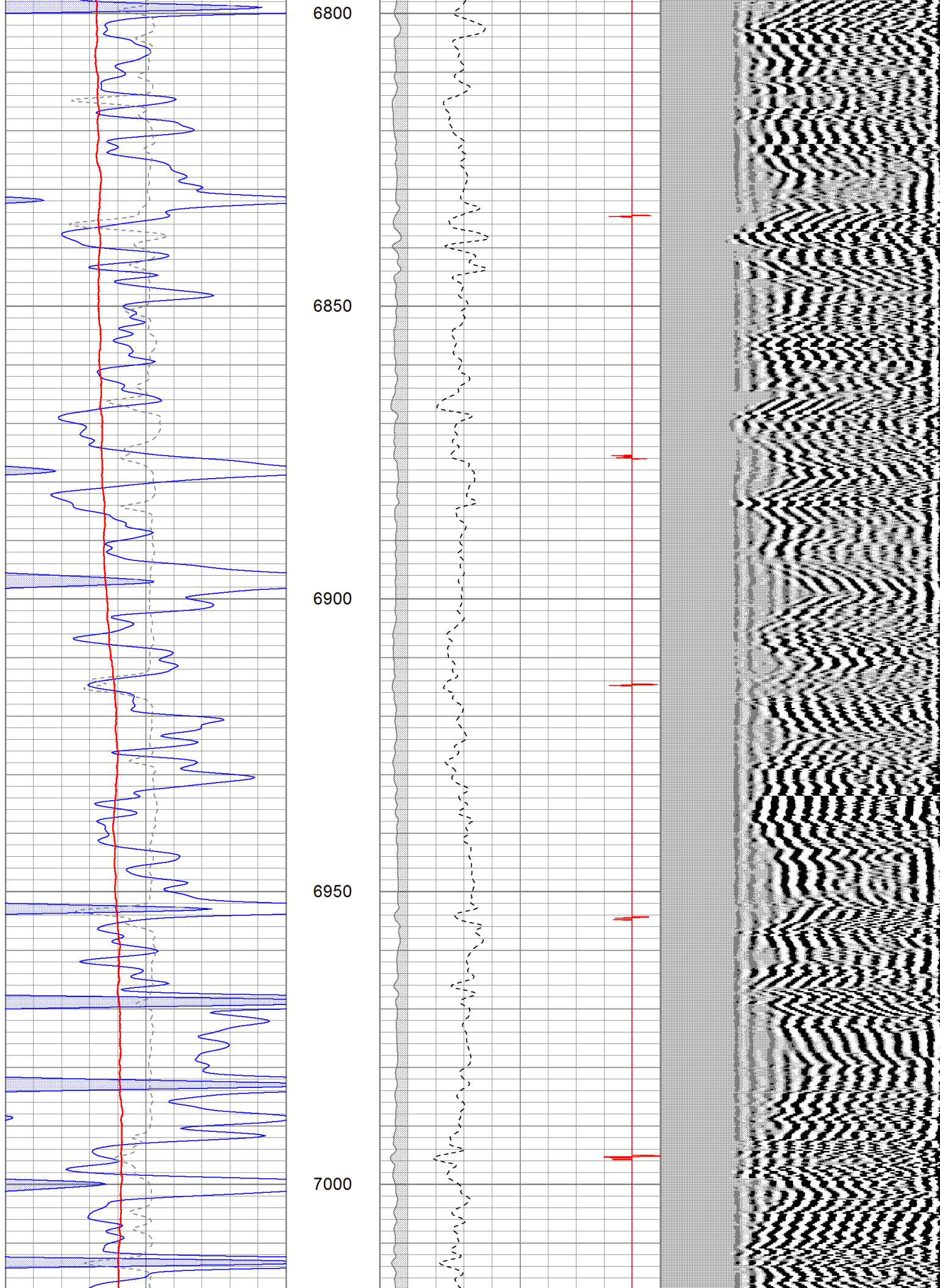
6600

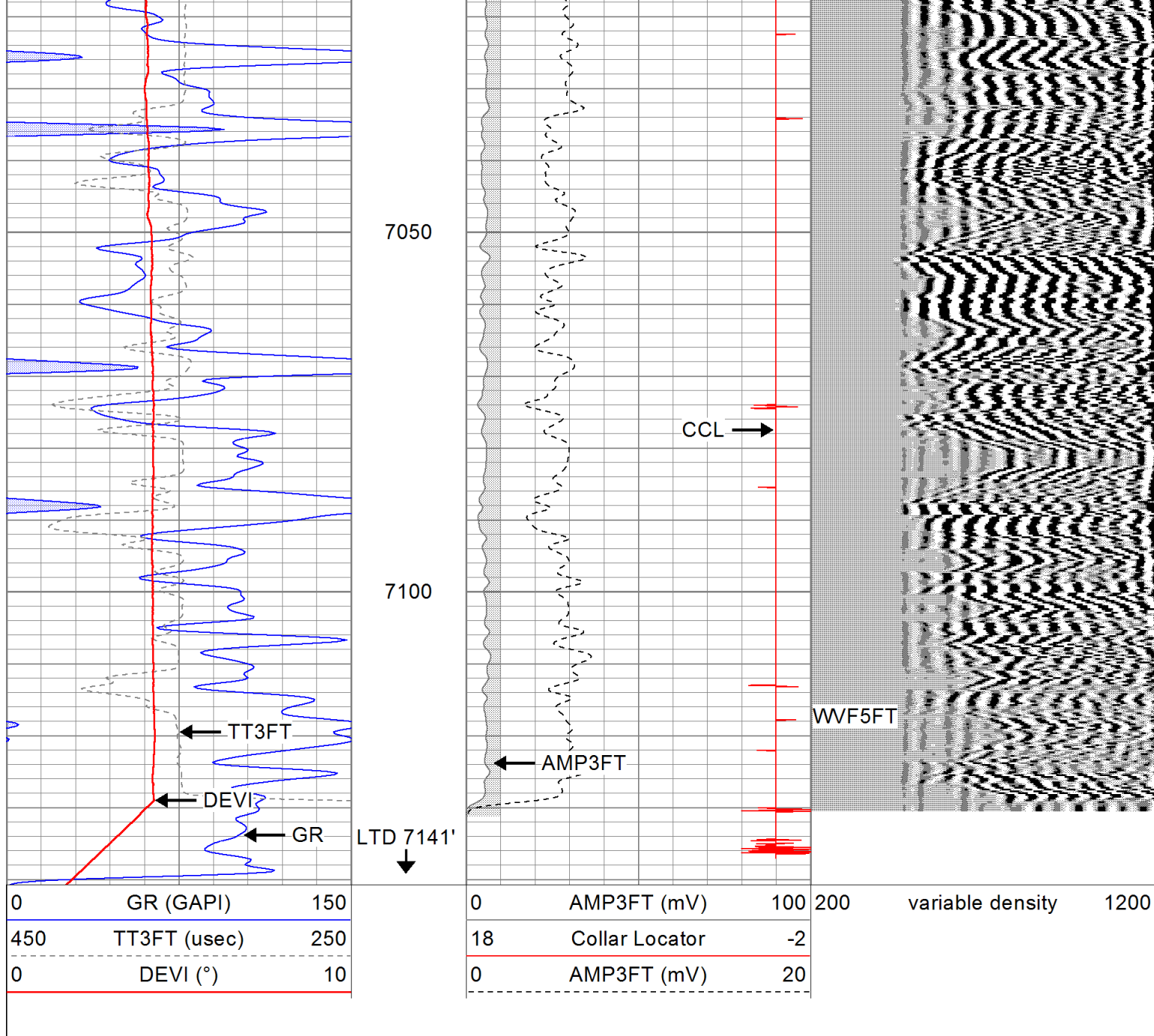
6650

6700

6750



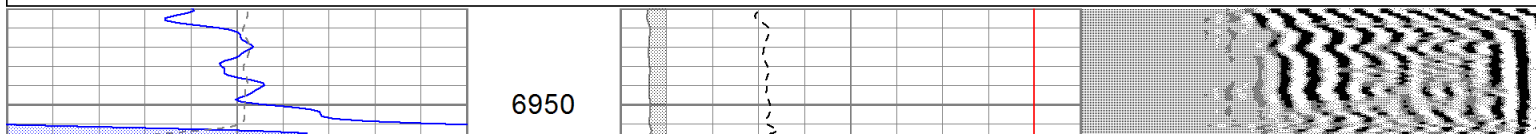


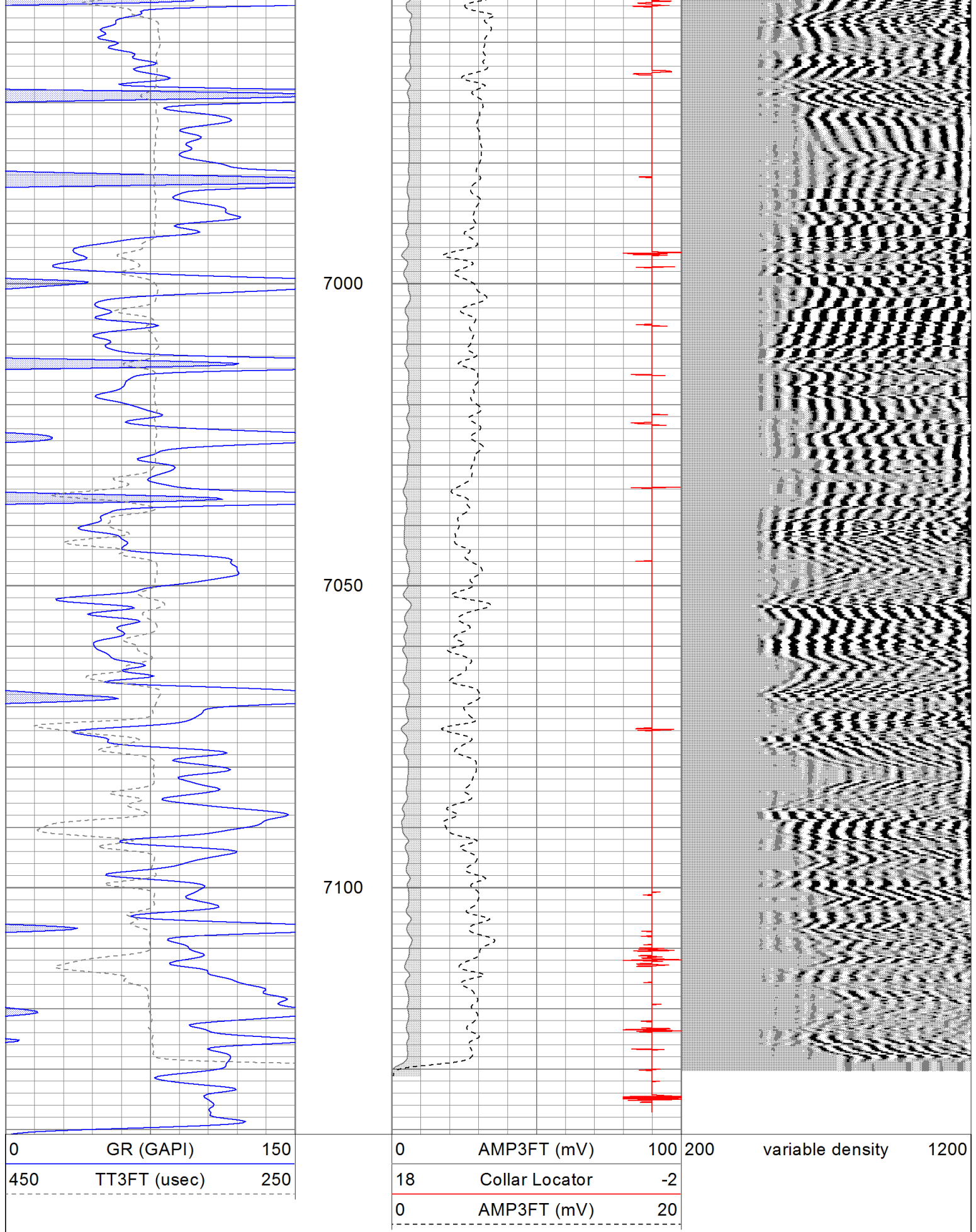


Repeat Pass

Database File: rfcraig1233cbl.db
 Dataset Pathname: pass3
 Presentation Format: cbl
 Dataset Creation: Sat Oct 31 08:08:25 2009 by Log Std Casedhole 08121
 Charted by: Depth in Feet scaled 1:240

0	GR (GAPI)	150	0	AMP3FT (mV)	100	200	variable density	1200
450	TT3FT (usec)	250	18	Collar Locator	-2			
			0	AMP3FT (mV)	20			





Calibration Report

Database File: rfrcraig1233cbl.db
Dataset Pathname: pass4

Gamma Ray Calibration Report				
Serial Number:	275D_with_INC			
Tool Model:	275D_INC			
Performed:	Thu Sep 24 14:26:16 2009			
Calibrator Value:	200.0	GAPI		
Background Reading:	0.0	cps		
Calibrator Reading:	200.0	cps		
Sensitivity:	0.9950	GAPI/cps		

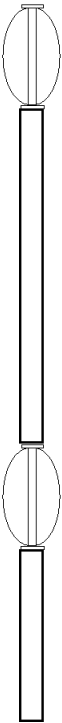
Inclinometer Calibration Report					
Performed:	Thu Sep 24 14:52:28 2009				
	Low Read.	High Read.	Low Ref.	High Ref.	
X Accelerometer	-3583.20	3593.60	-1.00	1.00	gee
Y Accelerometer	-3666.60	3525.20	-1.00	1.00	gee
Z Accelerometer					

Segmented Cement Bond Log Calibration Report				
Serial Number:	80553			
Tool Model:	Radii			
Calibration Casing Diameter:	5.500	in		
Calibration Depth:	136.378	ft		

Master Calibration, performed Sat Oct 31 07:17:35 2009:						
	Raw (v)		Calibrated (mv)		Results	
	Zero	Cal	Zero	Cal	Gain	Offset
3'	0.021	1.465	1.000	61.000	41.555	0.139
CAL	0.021	1.671				
5'	0.021	1.713	1.000	71.921	41.908	0.123
SUM						
S1	0.020	1.413	0.800	85.000	60.461	-0.437
S2	0.020	1.436	0.800	85.000	59.473	-0.418
S3	0.021	1.488	0.800	85.000	57.386	-0.379
S4	0.021	1.542	0.800	85.000	55.351	-0.343
S5	0.021	1.532	0.800	85.000	55.722	-0.347
S6	0.021	1.480	0.800	85.000	57.689	-0.387
S7	0.021	1.403	0.800	85.000	60.896	-0.451
S8	0.021	1.380	0.800	85.000	61.958	-0.484

Air Zero Calibration, performed Sat Oct 31 07:17:58 2009:			
	Raw (v)	Calibrated (v)	Results
	Zero	Zero	Offset
3'	0.021	0.000	-0.000
5'	0.021	0.000	-0.000

S		0.021	0.000	0.000
SUM				
S1		0.021	0.000	-0.000
S2		0.021	0.000	-0.000
S3		0.021	0.000	-0.000
S4		0.021	0.000	-0.000
S5		0.021	0.000	-0.000
S6		0.021	0.000	-0.000
S7		0.021	0.000	-0.000
S8		0.021	0.000	-0.000

Sensor	Offset (ft)	Schematic	Description	Len (ft)	OD (in)	Wt (lb)
						
			TitanSmall Small Titan 3 Bowspring Centralizer	2.73	1.69	5.00
WVF3FT	11.48					
WVFCAL	11.48					
WVFS1	11.48					
WVFS2	11.48					
WVFS3	11.48		RBT-Radii (80553) Probe Radii SCBL Tool	8.75	2.75	90.00
WVFS4	11.48					
WVFS5	11.48					
WVFS6	11.48					
WVFS7	11.48					
WVFS8	11.48					
WVF5FT	10.48		TitanSmall Small Titan 3 Bowspring Centralizer	2.73	1.69	5.00
CCL	3.50					
ACCX	1.83					
ACCY	1.83					
ACCZ	1.83					
GR	0.83		GR-275D_INC (275D_with_INC) 2-3/4" GR-CCL with Inclination	4.50	2.75	50.00
		Dataset:	rfcraig1233cbl.db: field/well/run1/pass5			
		Total Length:	18.71 ft			
		Total Weight:	150.00 lb			
		O.D.	2.75 in			