

Company: ROSETTA RESOURCES OPERATING, LP

Well: WESTERBERG 28-05

Field: WILDCAT

County: YUMA

State: COLORADO

County: YUMA  
Field: WILDCAT  
Location: SWNW  
Well: WESTERBERG 28-05  
Company: ROSETTA RESOURCES OPERATING, LP

CEMENT BOND  
GAMMA RAY CCL LOG

LOCATION			
SWNW		Elev.:	K.B. 3823 ft
2369' FNL X 674' FWL			G.L. 3811 ft
			D.F. 3822 ft
Permanent Datum:	GROUND LEVEL	Elev.:	3811 ft
Log Measured From:	KELLY BUSHING	12.0 ft	above Perm. Datum
Drilling Measured From:	KELLY BUSHING		
API Serial No.	Section 28	Township 1N	Range 44W
05-125-11238-000C			

Logging Date 30-May-2008

Run Number 1

Depth Driller 2475 ft

Schlumberger Depth 2436 ft

Bottom Log Interval 2436 ft

Top Log Interval 1100 ft

Casing Fluid Type WATER

Salinity

Density

Fluid Level 0 ft

BIT/CASING/TUBING STRING

Bit Size 6.250 in

From

To

Casing/Tubing Size 4.500 in

Weight 10.5 lbm/ft

Grade

From

To

Maximum Recorded Temperatures 111 degF

Logger On Bottom 30-May-2008

Unit Number 318 Location FT MORGAN CO

Recorded By SAM HOPPER

Witnessed By JOHN ABBOTT

Oil Density  
Water Salinity  
Gas Gravity  
Bo

Bw

1/Bq

Bubble Point Pressure

Bubble Point Temperature

Solution GOR

Maximum Deviation

CEMENTING DATA

Primary/Squeeze

Casing String No

Lead Cement Type

Volume

Density

Water Loss

Additives

Tail Cement Type

Volume

Density

Water Loss

Additives

Expected Cement Top

Logging Date

Run Number

Depth Driller

Schlumberger Depth

Bottom Log Interval

Top Log Interval

Casing Fluid Type

Salinity

Density

Fluid Level

BIT/CASING/TUBING STRING

Bit Size

From

To

Casing/Tubing Size

Weight

Grade

From

To

Maximum Recorded Temperatures

Logger On Bottom

Unit Number

Recorded By

Witnessed By

Run 1

Run 2

Run

THE USE OF AND RELIANCE UPON THIS RECORDED-DATA BY THE HEREIN NAMED COMPANY (AND ANY OF ITS AFFILIATES, PARTNERS, REPRESENTATIVES, AGENTS, CONSULTANTS AND EMPLOYEES) IS SUBJECT TO THE TERMS AND CONDITIONS AGREED UPON BETWEEN SCHLUMBERGER AND THE COMPANY, INCLUDING: (a) RESTRICTIONS ON USE OF THE RECORDED-DATA; (b) DISCLAIMERS AND WAIVERS OF WARRANTIES AND REPRESENTATIONS REGARDING COMPANY'S USE OF AND RELIANCE UPON THE RECORDED-DATA; AND (c) CUSTOMER'S FULL AND SOLE RESPONSIBILITY FOR ANY INFERENCE DRAWN OR DECISION MADE IN CONNECTION WITH THE USE OF THIS RECORDED-DATA.

```
OS1:  MAST
OS2:  PERF
OS3:
OS4:
OS5:
```

OS1:  
OS2:  
OS3:  
OS4:  
OS5:

DEPTH REF TO PEX LOG OF 22-MAY-2008 SWS

REMARKS: RUN NUMBER 2

3.13 HEGS 16.1gm, 0.45eh, 18.5 pene, 120deg

Crew: Sam Hopper & Kenan Noe

THANK YOU FOR CHOOSING SCHLUMBERGER!

RUN 1

SERVICE ORDER #: 12062979  
PROGRAM VERSION: 15C0-309  
FLUID LEVEL: 0 ft

LOGGED INTERVAL

START

STOP

RUN 2

SERVICE ORDER #:  
PROGRAM VERSION:  
FLUID LEVEL:

LOGGED INTERVAL

START

STOP

RUN 1

## SURFACE EQUIPMENT

RUN 2

WITM-A

## DOWNHOLE EQUIPMENT

MH-22  
MH-22

29.8

Detail MT  
TelStatus  
CTEM

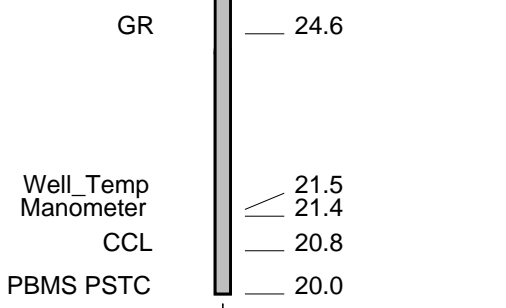
28.3

28.3

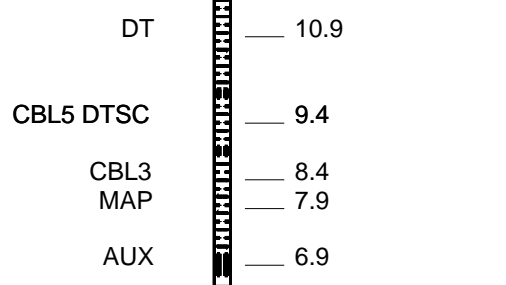
PSPT-A/B

PSC-A

PSP1-A 1876  
PSTC  
PBMS-A  
10k\_Sapphire\_Mano  
RTD\_Thermometer  
GR  
CCL  
PBMS



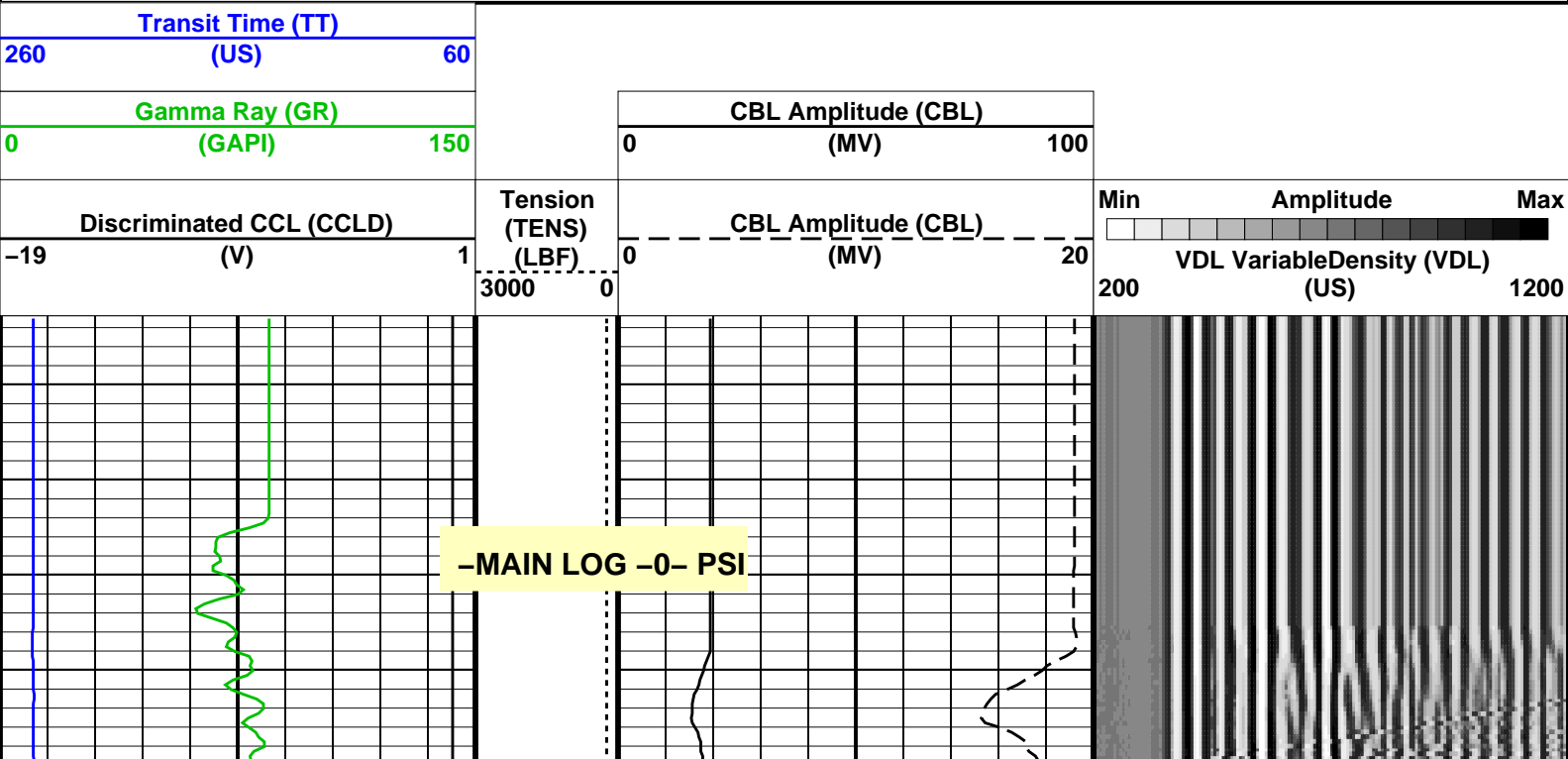
SCMT-CB  
SCMC-CA 8212  
SECH-CA 8210  
CMIR-AG  
SCMS-CB 8252  
SCMX-CA 8212



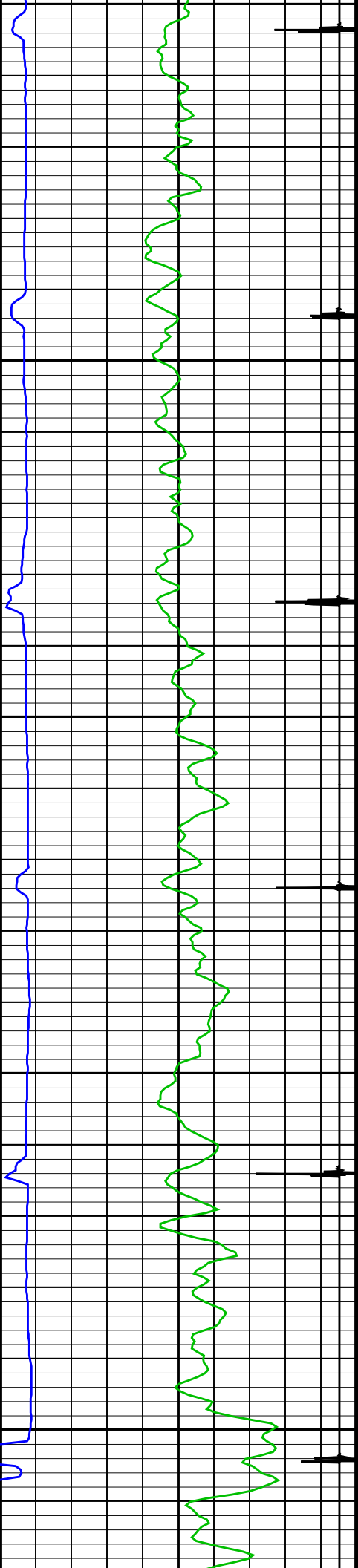
MAXIMUM STRING DIAMETER 1.69 IN  
MEASUREMENTS RELATIVE TO TOOL ZERO  
ALL LENGTHS IN FEET

Input DLIS Files						
DEFAULT	SCMT_PSP_003LUP	FN:2	PRODUCER	30-May-2008 13:31	2452.0 FT	1022.5 FT
Output DLIS Files						
DEFAULT	SCMT_PSP_004PUP	FN:3	PRODUCER	30-May-2008 13:50	2452.0 FT	1002.5 FT

OP System Version: 15C0-309			
MCM			
SCMT-CB	SRPC-3525-DEC_2007_OP15	PSPT-A/B	SRPC-3525-DEC_2007_OP15

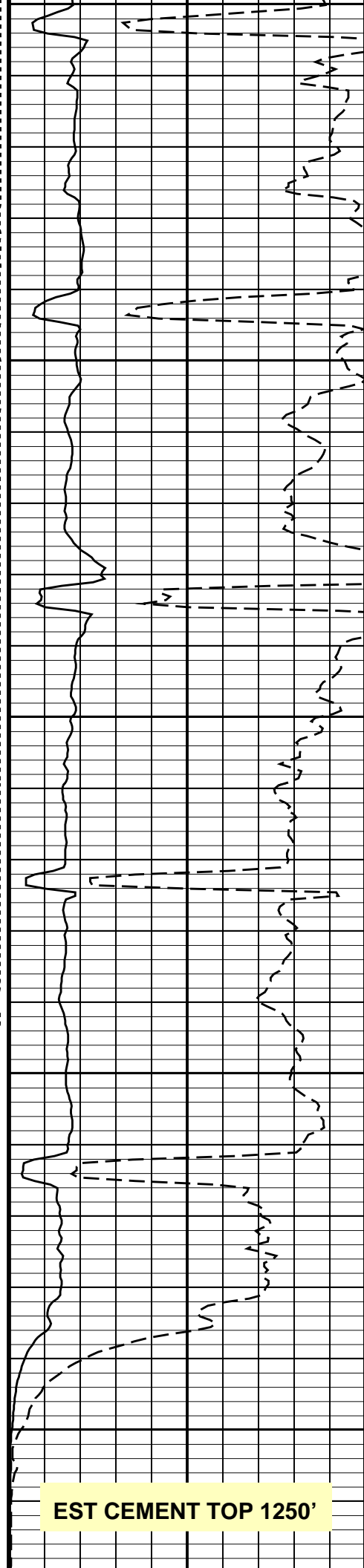




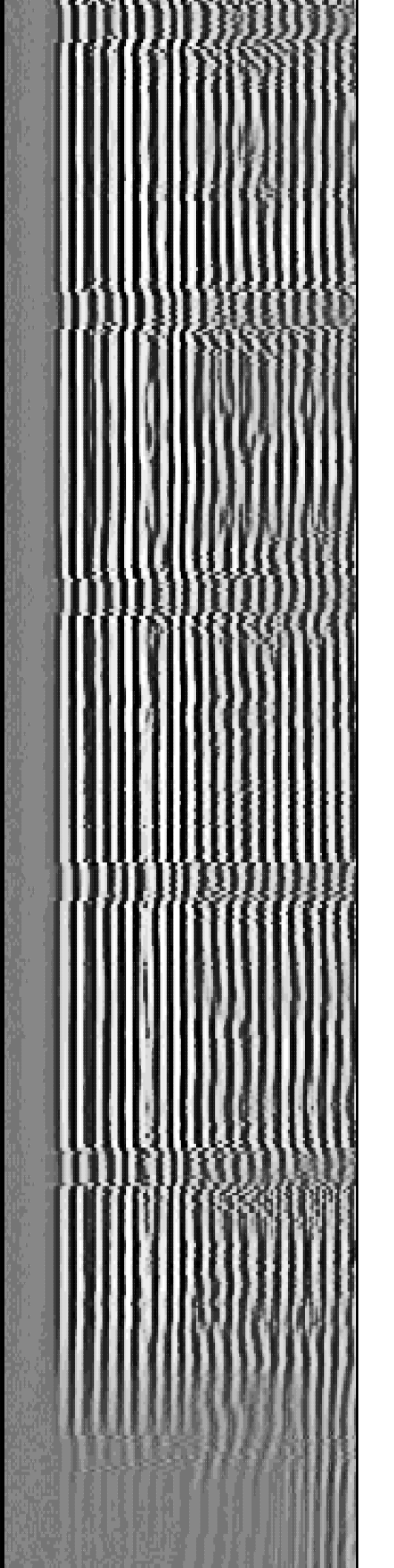


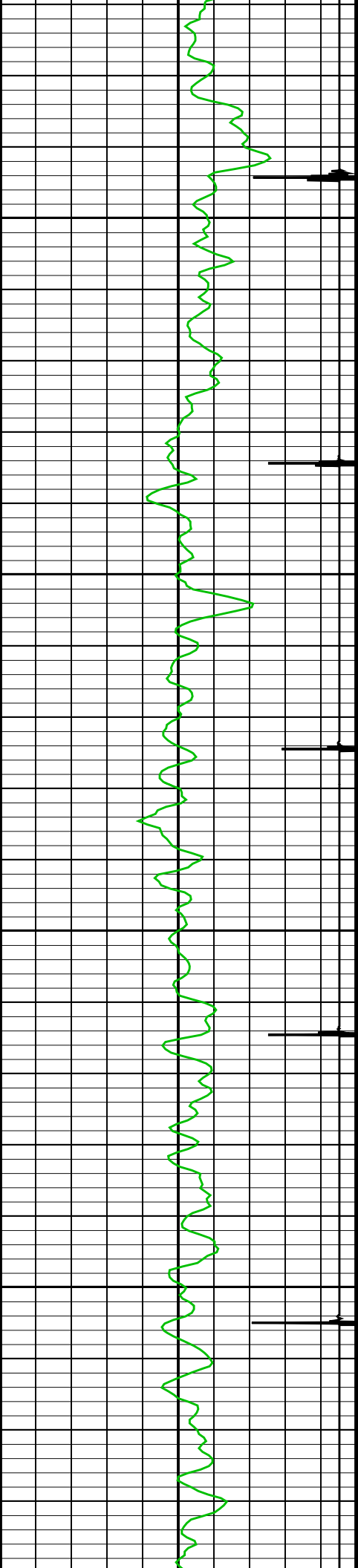
1100

1200



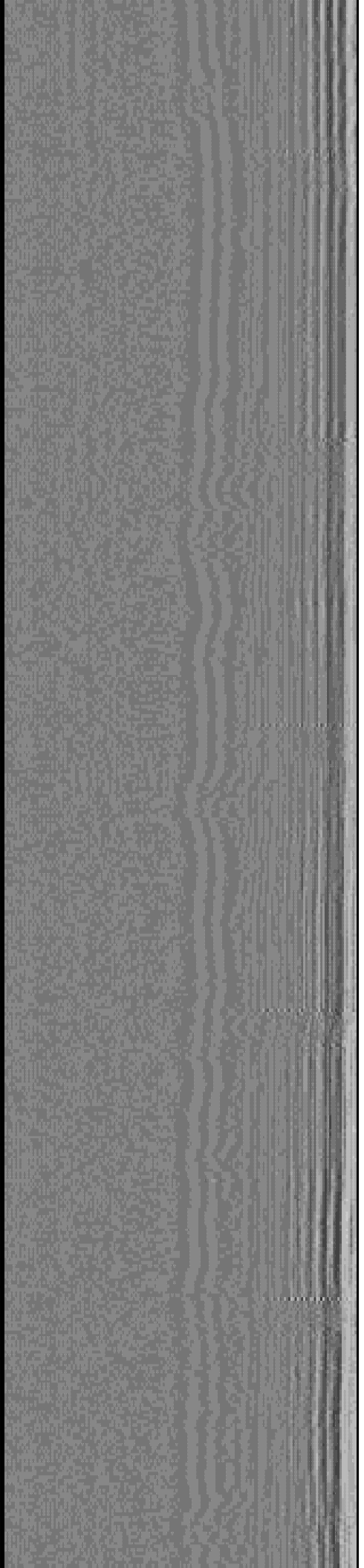
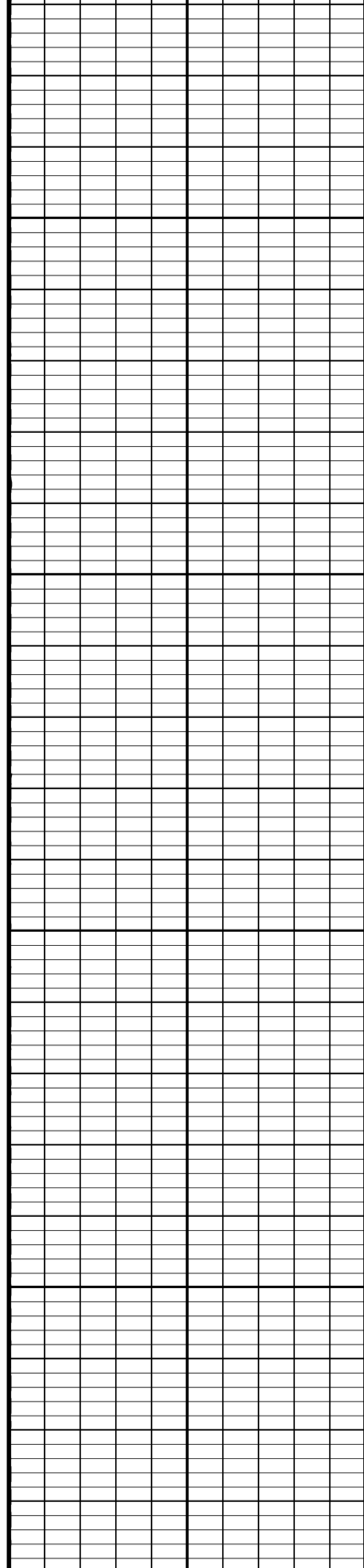
EST CEMENT TOP 1250'

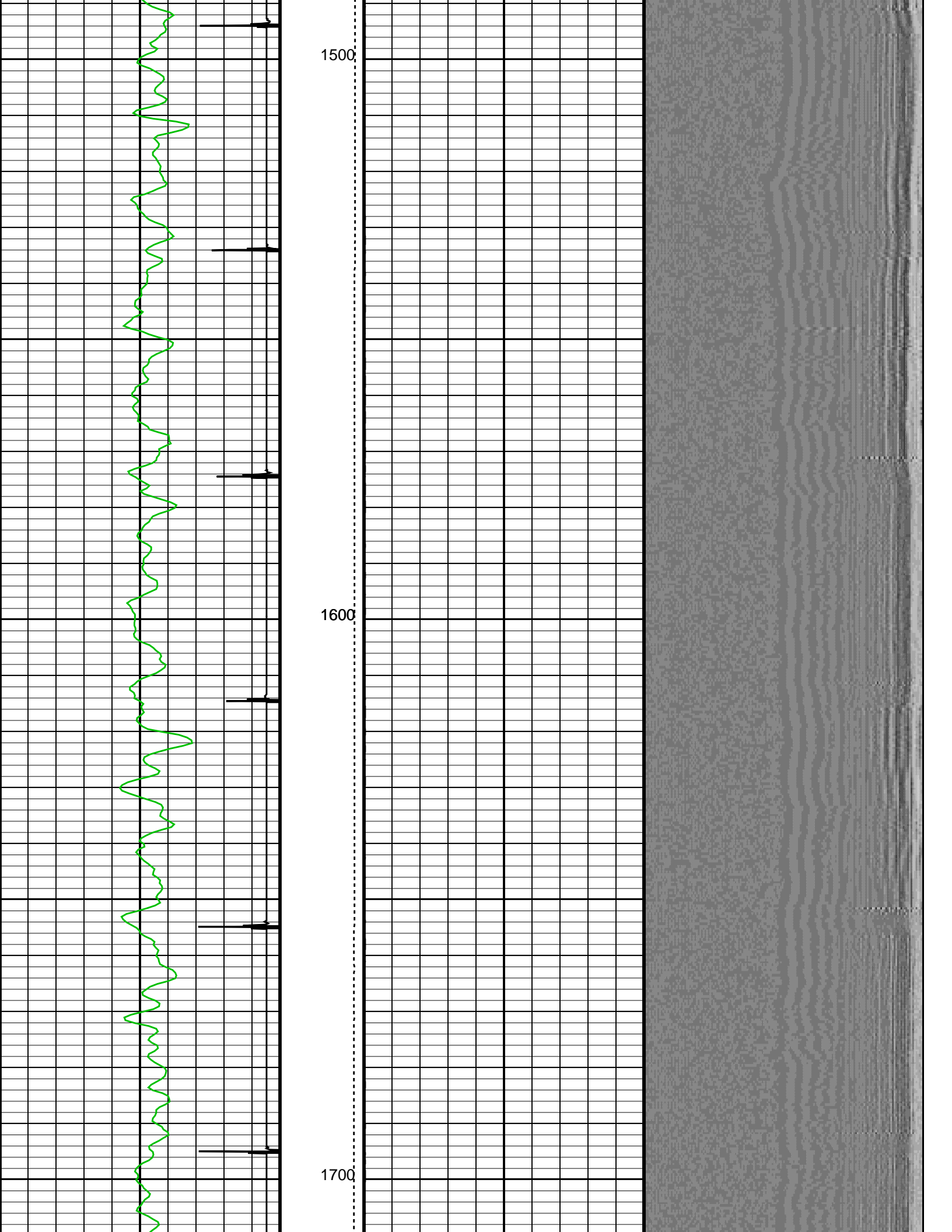


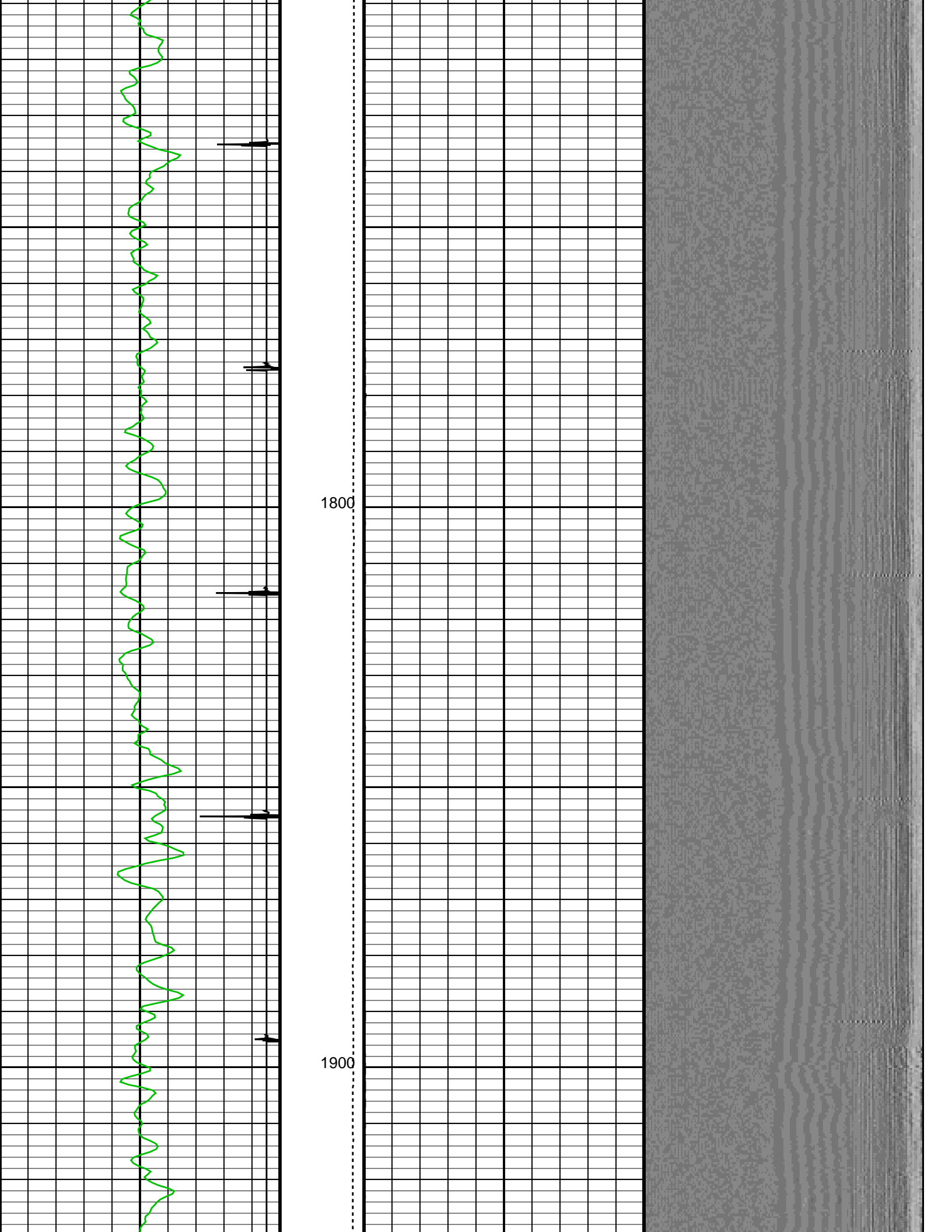


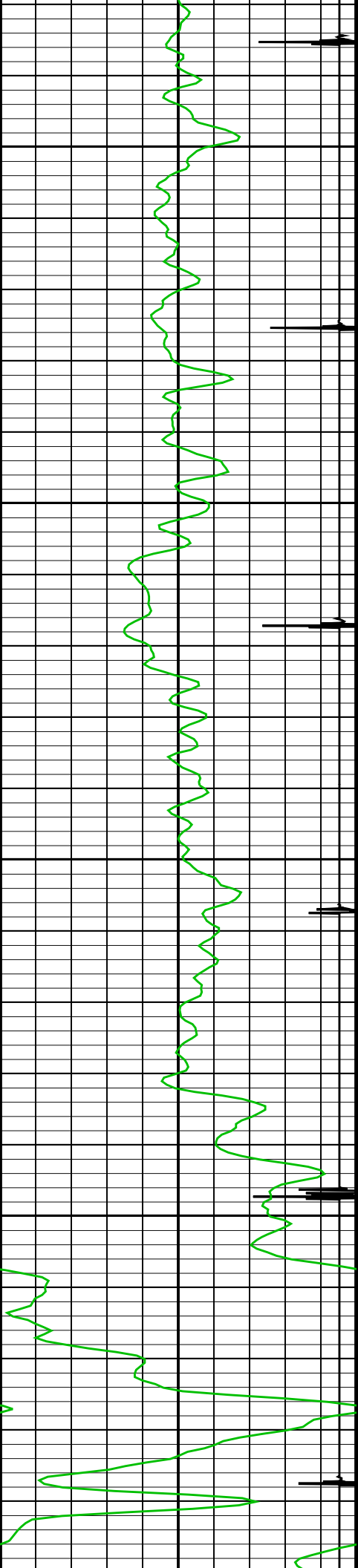
1300

1400





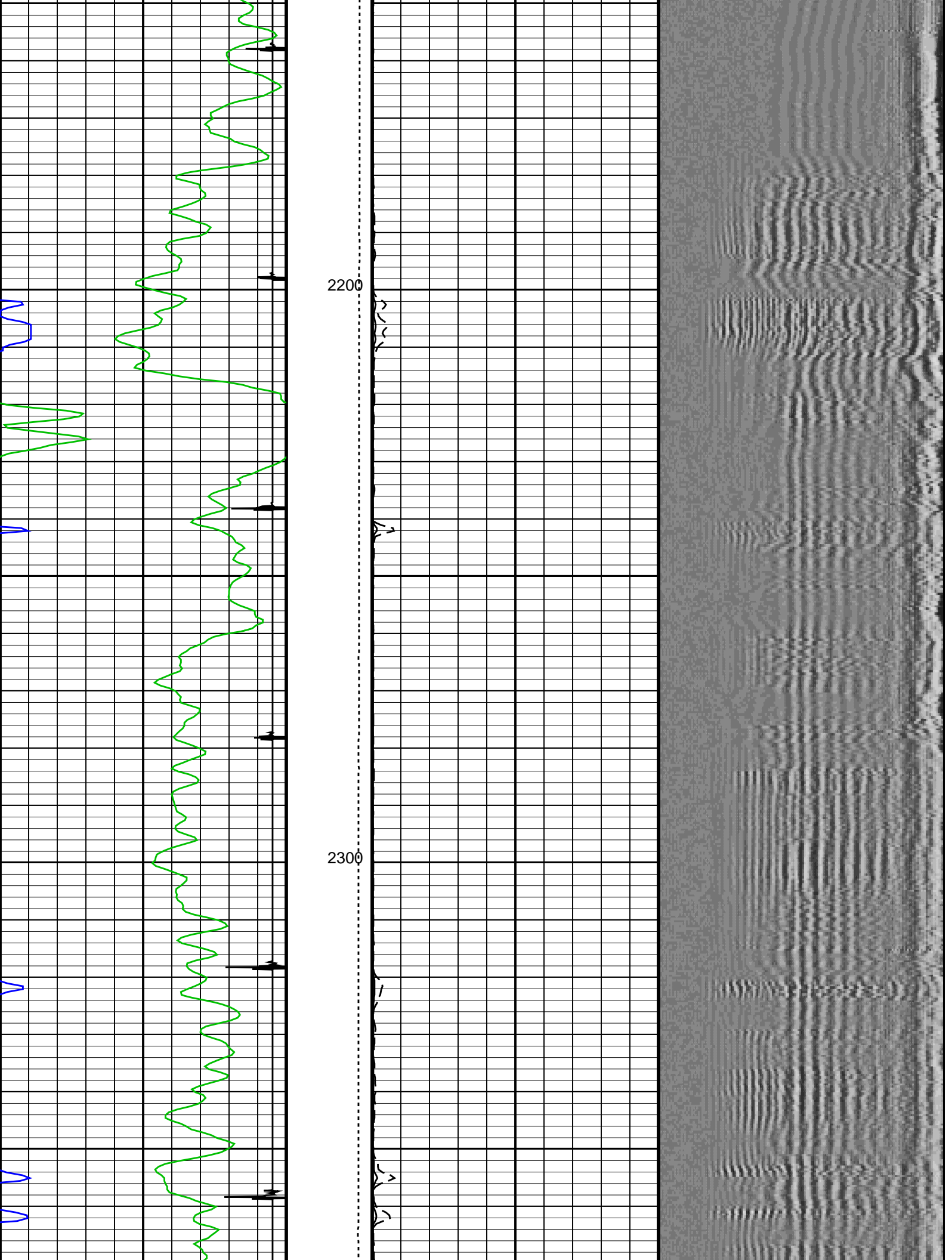




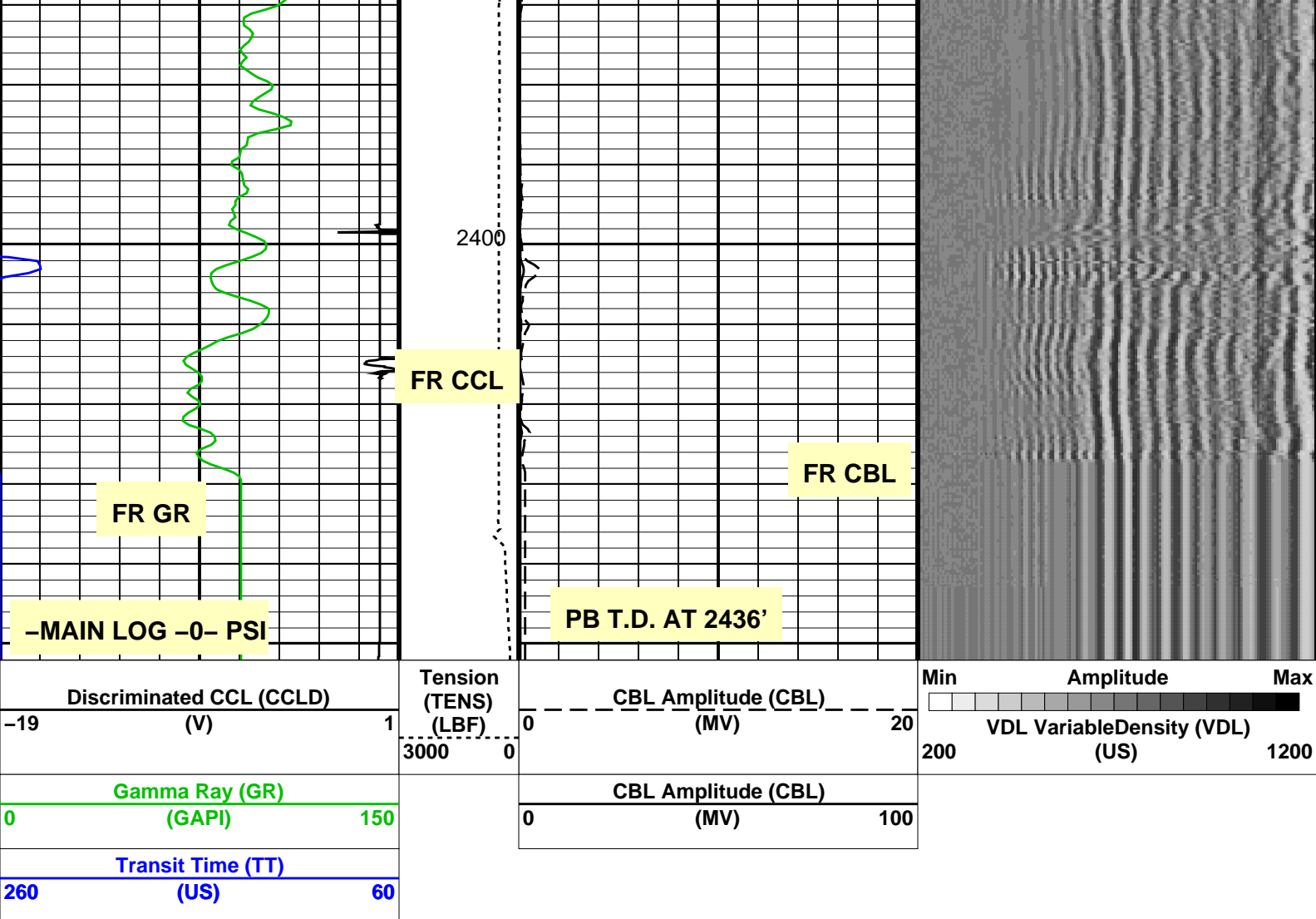
2000

2100

FLAG JOINT 2138'-2158'







## Parameters

DLIS Name	Description	Value
SCMT-CB: Slim Cement Mapping Tool, 1-11/16 OD		
BILI	Bond Index Level for Zone Isolation	0.8
BISS	Bond Index Source Selection for BIQL	BI
CB3D	SCMT CBL 3 ft Peak Detection Mode	PEAK
CB3G	SCMT CBL 3 ft Peak Detection T0_Delay and Noise Gate	229.39 US
CB3T	SCMT CBL 3 ft Fixed Threshold Level	20 MV
CB5D	SCMT CBL 5 ft Peak Detection Mode	PEAK
CB5G	SCMT CBL 5 ft Peak Detection T0_Delay and Noise Gate	500 US
CB5T	SCMT CBL 5 ft Fixed Threshold Level	20 MV
CBLG	CBL Gate Width	40 US
CBRA	CBL LQC Reference Amplitude in Free Pipe	79 MV
CMCF	CBL Cement Type Compensation Factor	0.0851843
CMTC	SCMT Slow Channel Multiplexer Mode	SCAN
CMTM	SCMT Operating Mode	LOG
CMTT	SCMT Tool position on CAN	3
CSCS	SCMT Slow Channel Index	VCC
CTHI	Casing Thickness	0.229988 IN
DTF	Delta-T Fluid	205 US/F
FATT	Acoustic Attenuation due to Fluid	0 DB/F
FCF	CBL Fluid Compensation Factor	1
GOBO	Good Bond	0.935163 MV
MAPD	SCMT MAP Peak Detection Mode	PEAK
MAPG	SCMT MAP Peak Detection T0_Delay and Noise Gate	172.39 US
MAPT	SCMT MAP Fixed Threshold Level	30 MV
MATT	Maximum Attenuation	10.6967 DB/F
MCCF	MAP Cement Type Compensation Factor	0.207723
MCI	Minimum Cemented Interval for Isolation	1.25 FT
MMSA	MAP Minimum Sonic Amplitude	2.90558 MV
MSA	Minimum Sonic Amplitude	0.308463 MV
PEDE	Peak Detection On/Off Switch in Playback	OFF
RBC	Relative Bearing Correction Allow/Disallow	ALLOW
VDLG	VDL Manual Gain	5
ZCMT	Acoustic Impedance of Cement	3.22 MRAY
PSPT-A/B: Production Services Logging Platform		
RHS	Perforation Status	CASED

BHS	Borehole Status	CASED	
BHT	Bottom Hole Temperature (used in calculations)	111	DEGF
CSID	Casing Size I.D.	4.052	IN
GCSE	Generalized Caliper Selection	BS	
GDEV	Average Angular Deviation of Borehole from Normal	0	DEG
GGRD	Geothermal Gradient	0.01	DF/F
GRSE	Generalized Mud Resistivity Selection	CHART_GEN 9	
GTSE	Generalized Temperature Selection	LINEAR_ESTIMATE	
ISSBAR	Barite Mud Switch	NOBARITE	
MATR	Rock Matrix for Neutron Porosity Corrections	LIMESTONE	
PBPO	PBMS Tool position on CAN	2	
PCCG	PBMS CCL Gain	DB24	
PSTP	PSTC Tool Position on CAN Bus	1	
SHT	Surface Hole Temperature	68	DEGF
System and Miscellaneous			
ALTDPCCHAN	Name of alternate depth channel	SpeedCorrectedDepth	
BS	Bit Size	6.250	IN
BSAL	Borehole Salinity	-50000.00	PPM
CSIZ	Current Casing Size	4.500	IN
CWEI	Casing Weight	10.50	LB/F
DFD	Drilling Fluid Density	-50000.00	LB/G
DO	Depth Offset for Playback	0.0	FT
FLEV	Fluid Level	0.00	FT
MST	Mud Sample Temperature	-50000.00	DEGF
PBVSADP	Use alternate depth channel for playback	NO	
PP	Playback Processing	NORMAL	
RMFS	Resistivity of Mud Filtrate Sample	-50000.0000	OHMM
RW	Resistivity of Connate Water	0.0000	OHMM
TD	Total Depth	-50000	FT
TDD	Total Depth - Driller	2475.00	FT
TDL	Total Depth - Logger	2436.00	FT
TWS	Temperature of Connate Water Sample	0.00	DEGF

Format: CBL\_VDL    Vertical Scale: 5" per 100'    Graphics File Created: 30-May-2008 13:50

## OP System Version: 15C0-309

MCM

SCMT-CB    SRPC-3525-DEC\_2007\_OP15    PSPT-A/B    SRPC-3525-DEC\_2007\_OP15

### Input DLIS Files

DEFAULT    SCMT\_PSP\_003LUP    FN:2    PRODUCER    30-May-2008 13:31    2452.0 FT    1022.5 FT

### Output DLIS Files

DEFAULT    SCMT\_PSP\_004PUP    FN:3    PRODUCER    30-May-2008 13:50

Company: **ROSETTA RESOURCES OPERATING, LP**

**Schlumberger**

Well: **WESTERBERG 28-05**

Field: **WILDCAT**

County: **YUMA**

State: **COLORADO**

CEMENT BOND  
GAMMA RAY CCL LOG