

HALLIBURTON

Cement Bond
Gamma Ray CCL

123-25534


 Company Noble Energy Production
 Well Gerrity H 33-1
 Field Wattenberg
 County Weld State Colorado

County Weld

State

Colorado

API No. 05-123-25534

Serv. #.

 Location: SHL: 799' FNL & 444' FEL NE NE
 BHL: 1187' FNL & 58' FEL

Other Services

N/A

 Company Noble Energy Production 123-25534
 Well Gerrity H 33-1
 Field Wattenberg
 County Weld State

Sec: 32 Twp: 3N Rge: 65W

 Permanent Datum
 Log Measured From
 Casing Measured From

 GL Elevation 4884
 K.B. Fl. above perm. datum
 K.B.

 Elevation
 K.B. 4897
 D.F. 4897
 G.L. 4884

Date @ Time Logged 20 March, 2008

Type Fluid in Hole

Fresh Water

Run No.

One

Density of Fluid

8.4

Depth - Driller

7456

Fluid Level

Surface

Depth - Logger

7402

Cement Top Est. Logged

1108

Bottom - Logged Interval

7366

Equipment / Location

11014831 / Brighton

SP - Log Interval

900

Recorded by

Josh Folkers

Max Recorded Temp.

227

Witnessed by

Mr. Scott Armstrong

CEMENTING DATA

Surface

Protection

Liner

Rate / Time Cemented

String

Production

String

Primary / Squeeze

String

Expected

String

Compressive Strength

psi @

hrs.

psi @

hrs.

psi @

hrs.

Cement Volume

/

/

/

/

Cement Type / Weight

/

/

/

/

Cementulation

/

/

/

/

Mud Type / Mud Wgt.

/

/

/

/

Run Number

Bit

From

To

Size

Weight

From

TD

To

Surface

Bonehole Record

From

To

Size

Weight

From

TD

To

Surface

Casing & Tubing Record

From

To

Size

Weight

From

TD

To

Surface

<<< Fold Here >>>

HALLIBURTON DOES NOT GUARANTEE THE ACCURACY OF ANY INTERPRETATION OF THE LOG DATA, CONVERSION OF LOG DATA TO PHYSICAL ROCK PARAMETERS OR RECOMMENDATIONS WHICH MAY BE GIVEN BY HALLIBURTON PERSONNEL OR WHICH APPEAR ON THE LOG OR IN ANY OTHER FORM. ANY USER OF SUCH DATA, INTERPRETATIONS, CONVERSIONS, OR RECOMMENDATIONS AGREES THAT HALLIBURTON IS NOT RESPONSIBLE EXCEPT WHERE DUE TO GROSS NEGLIGENCE OR WILLFUL MISCONDUCT, FOR ANY LOSS, DAMAGES, OR EXPENSES RESULTING FROM THE USE THEREOF.

Comments

Log Correlated to PSI log dated March 08, 2008

Top of cement: 1108

Short Joints: 7217+ to 7238+ , 6907+ To 6922

Thank you for choosing Halliburton

Crew today was, Folkers, Townsend, Peach

HALLIBURTON

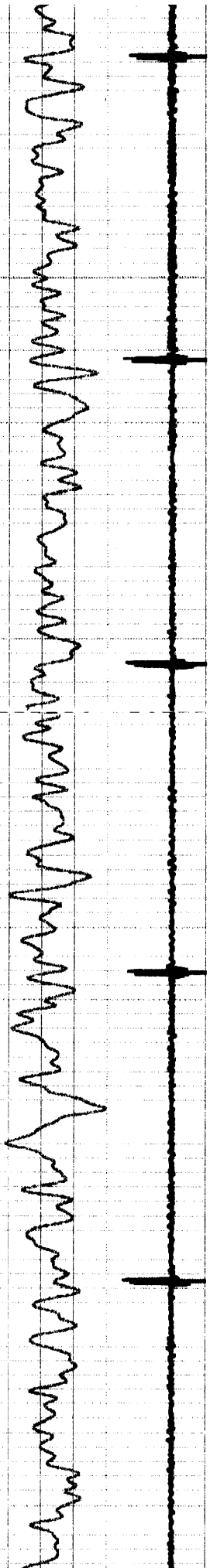
Sussex Pass

5" = 100'

Database File: noble_gerrity_h_33_1_cbl.db
Dataset Pathname: pass4
Presentation Format: josh_cbl
Dataset Creation: Thu Mar 20 16:34:52 2008 by Log Halliburton Casedho
Charted by: Depth in Feet scaled 1:240

9	Collar Locator	-1	0	Amplitude (mV)	100	200	Variable Density	1200
0	GR (GAPI)	150	0	Amplified Amplitude (mV)	10			

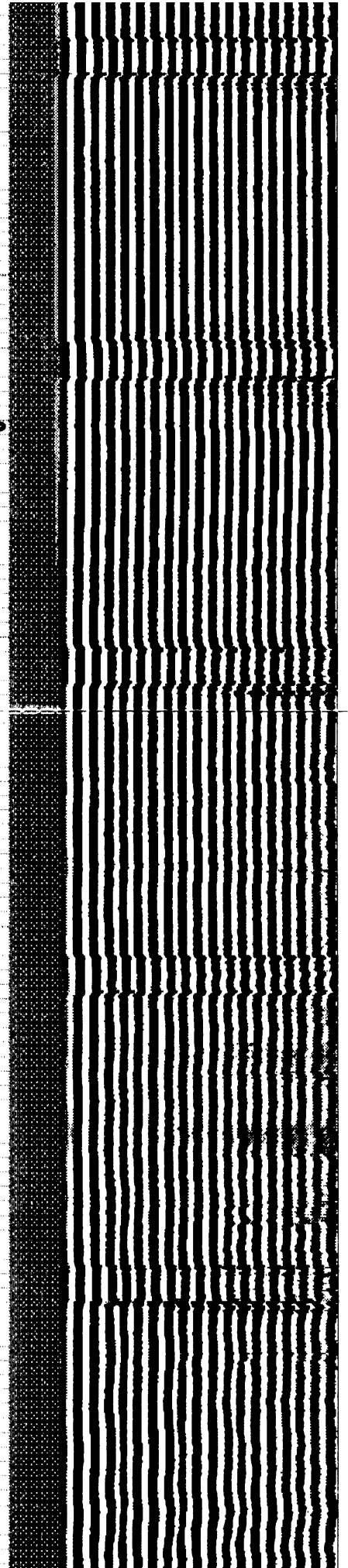
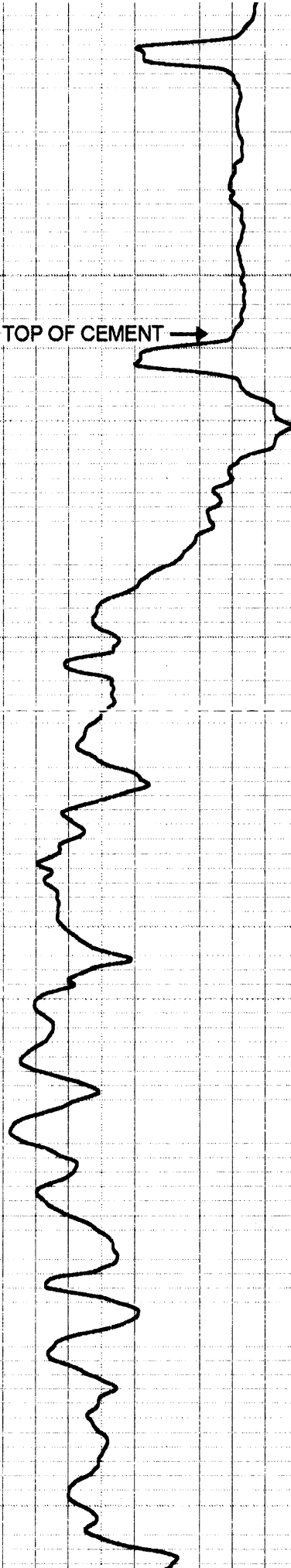


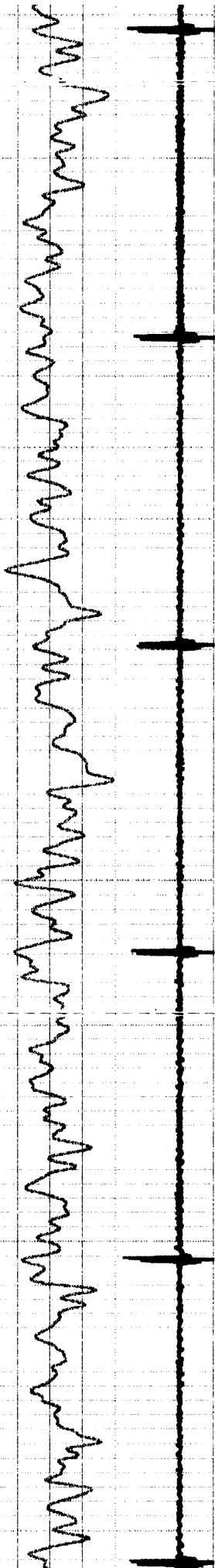


1100

1200

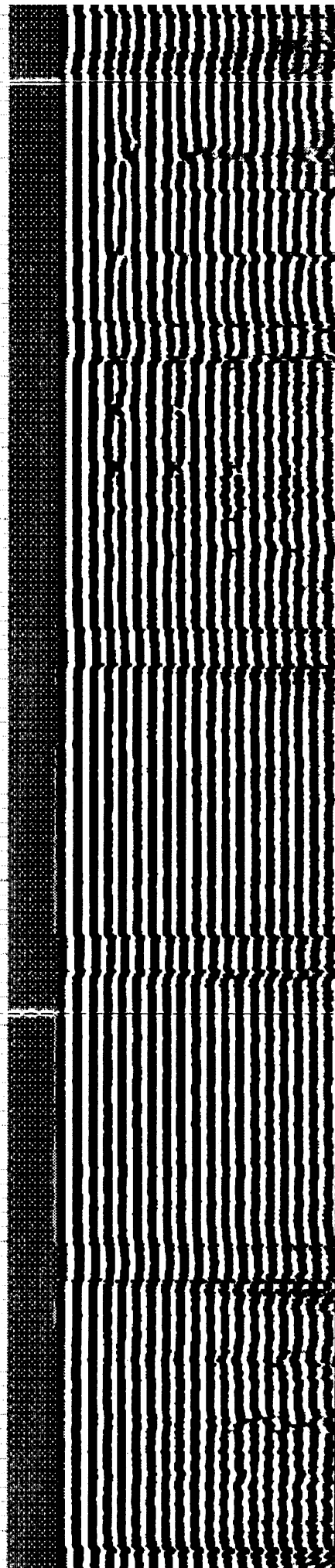
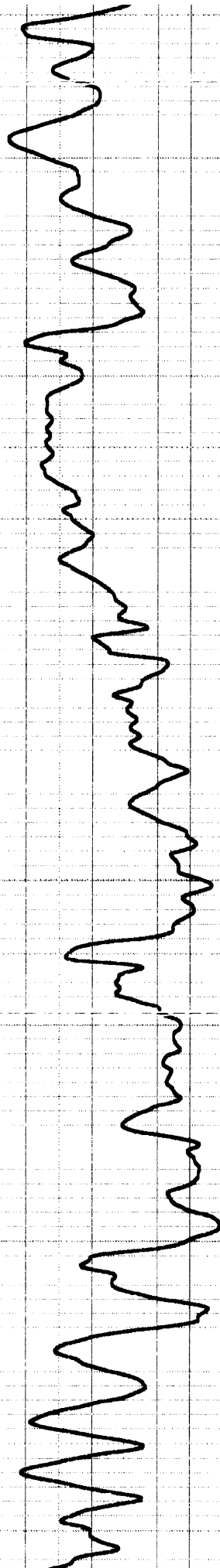
TOP OF CEMENT →

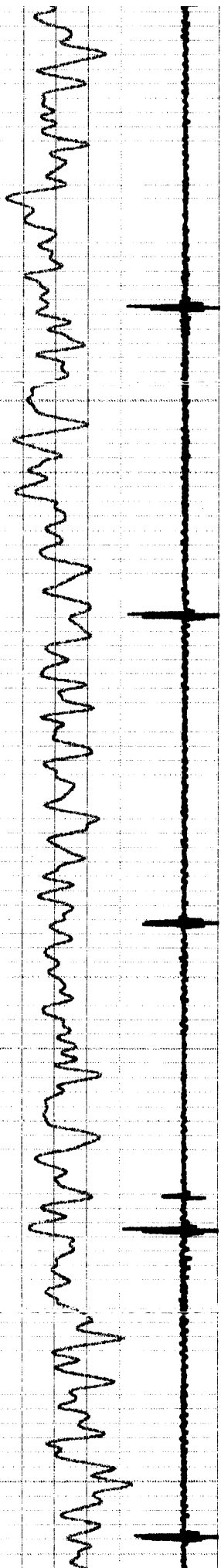




1300

1400

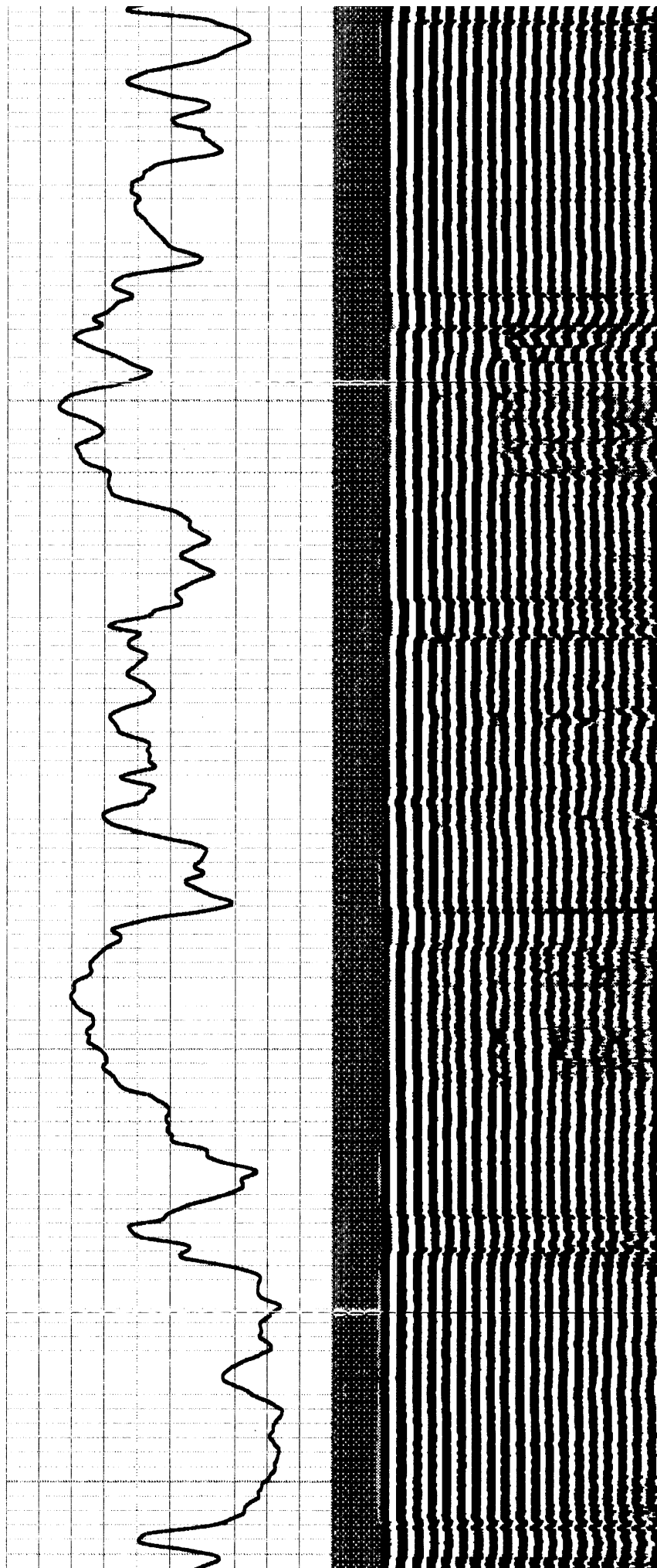


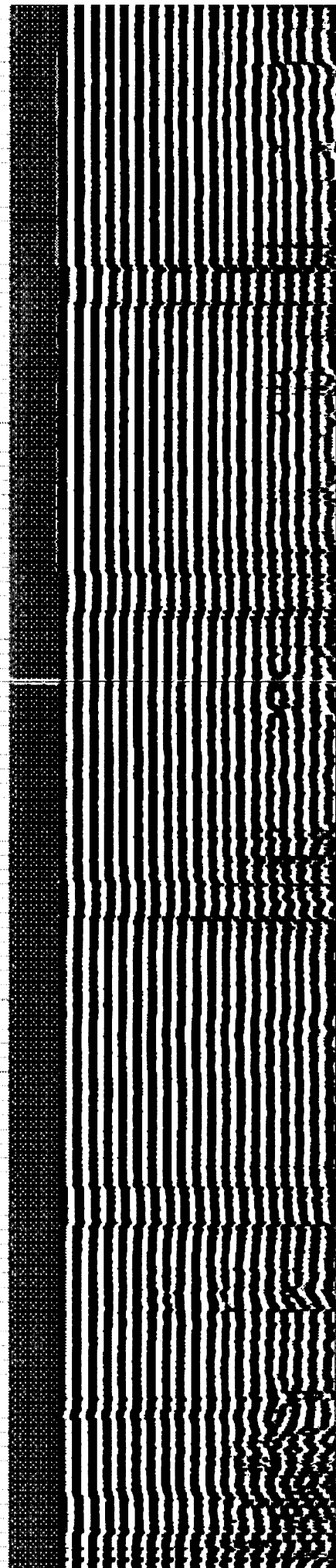
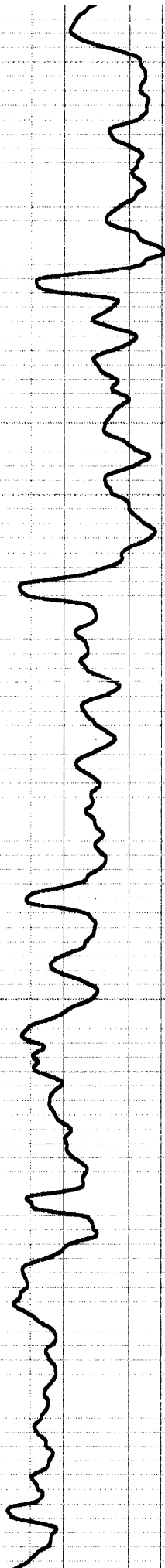
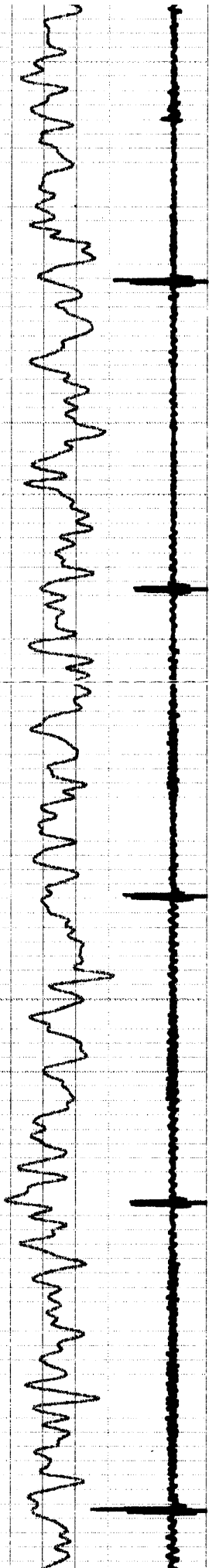


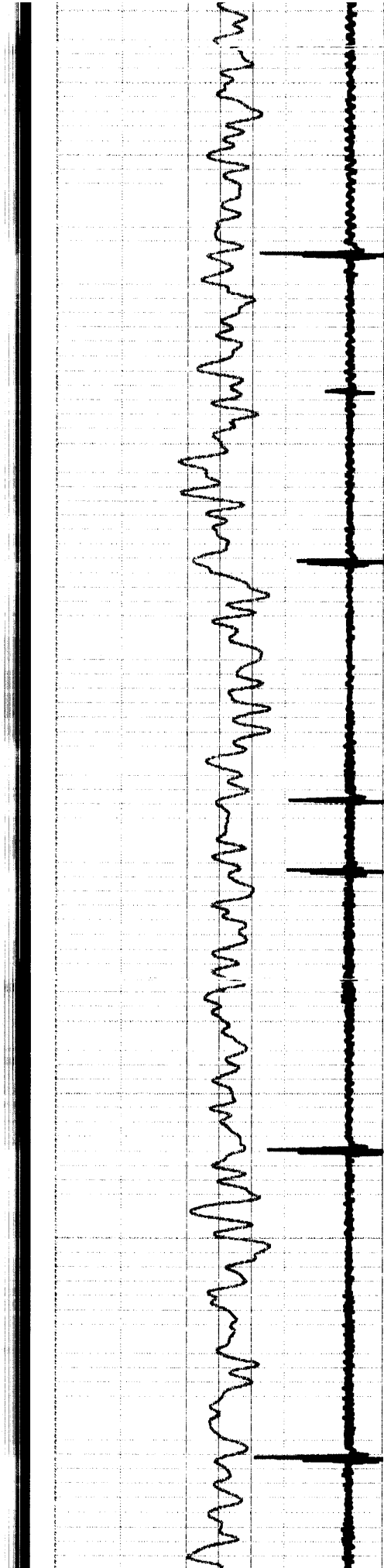
1500

1600

1700

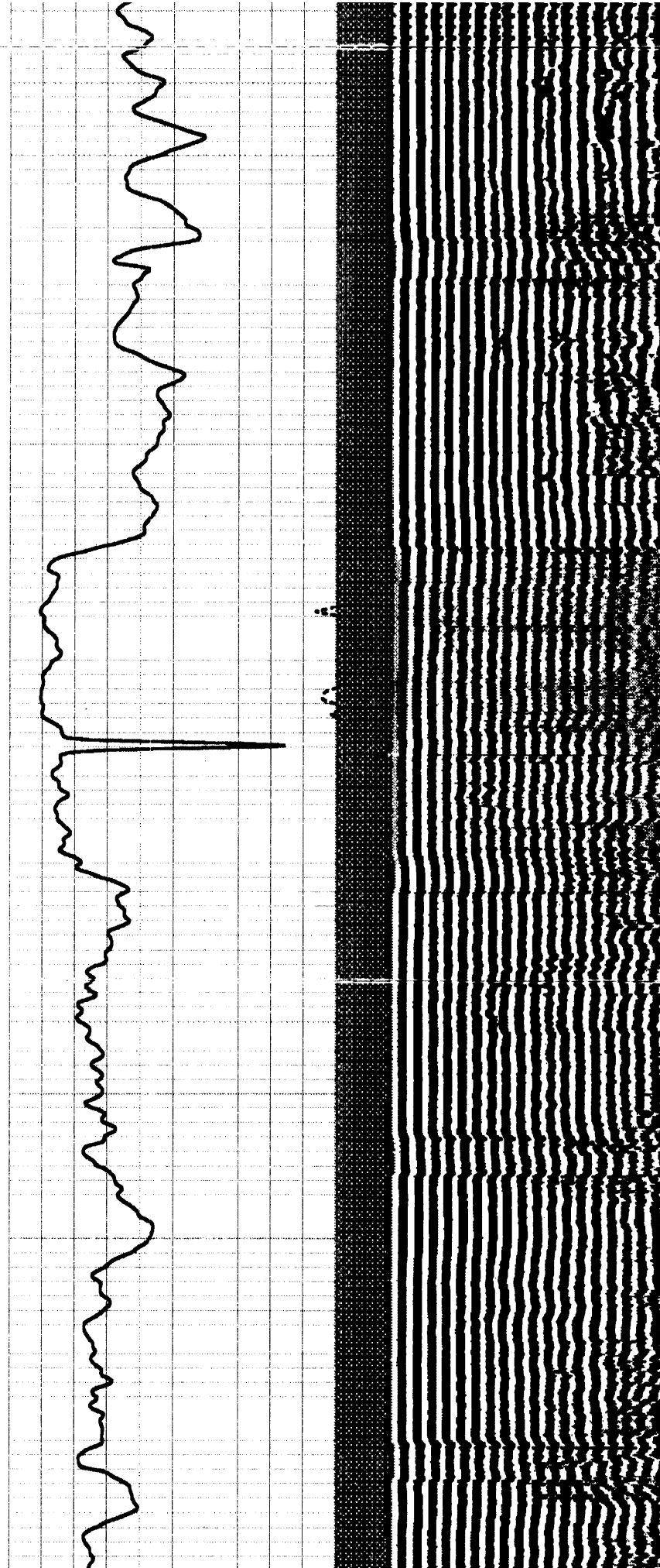


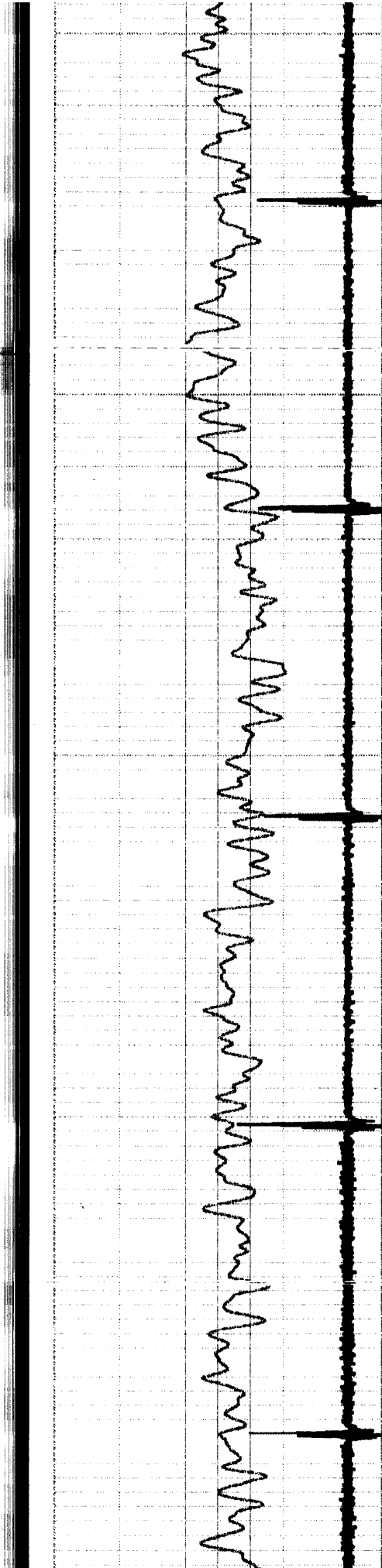




2000

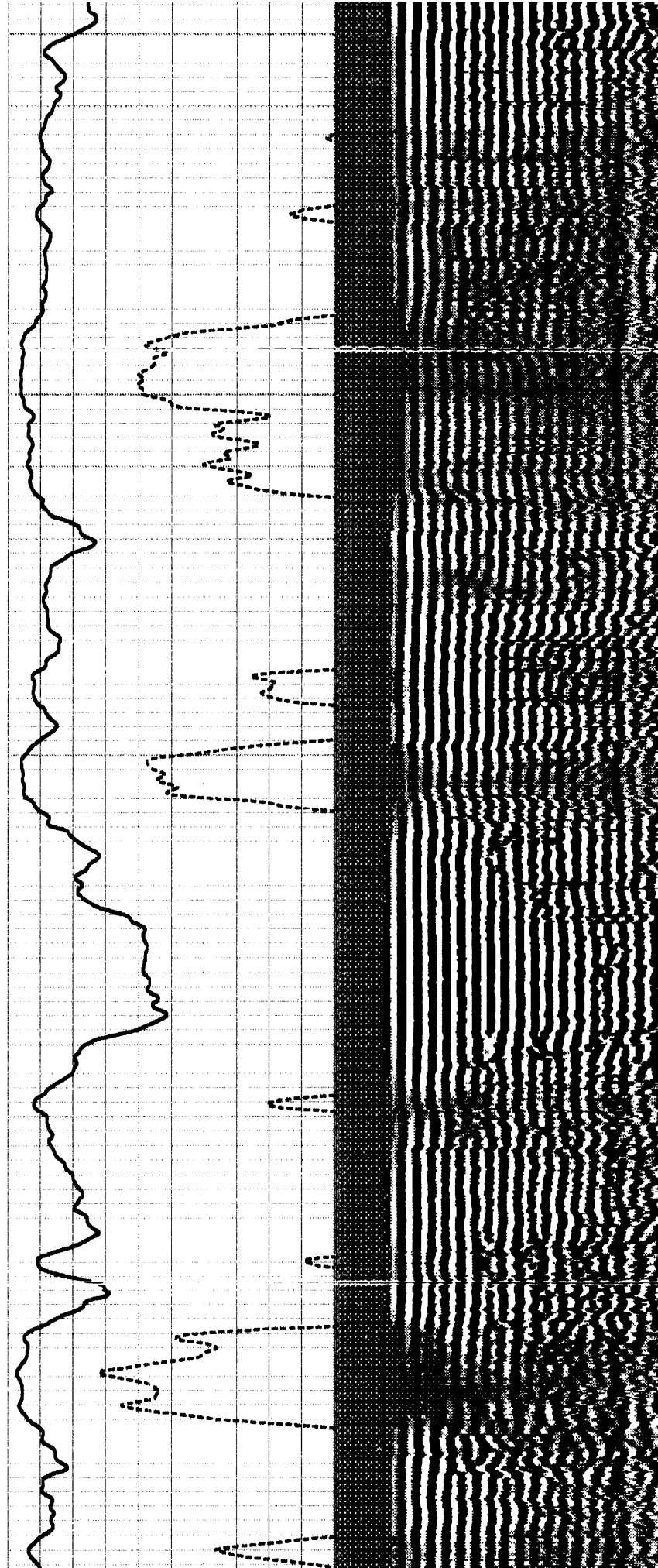
2100

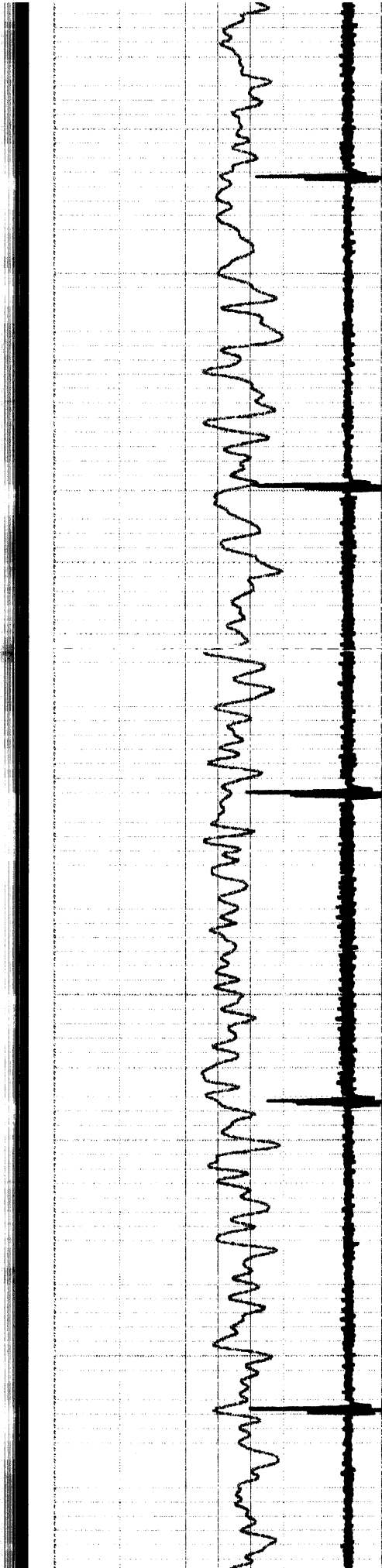




2200

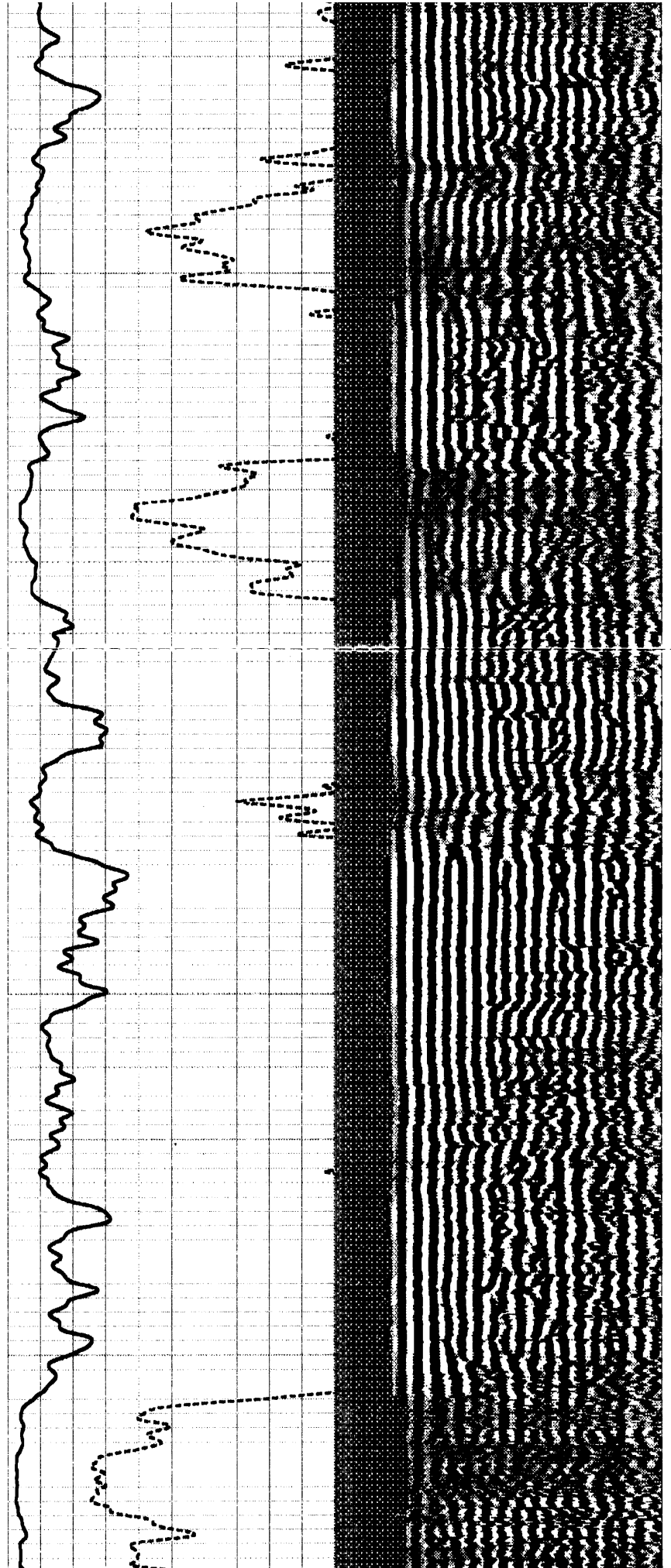
2300

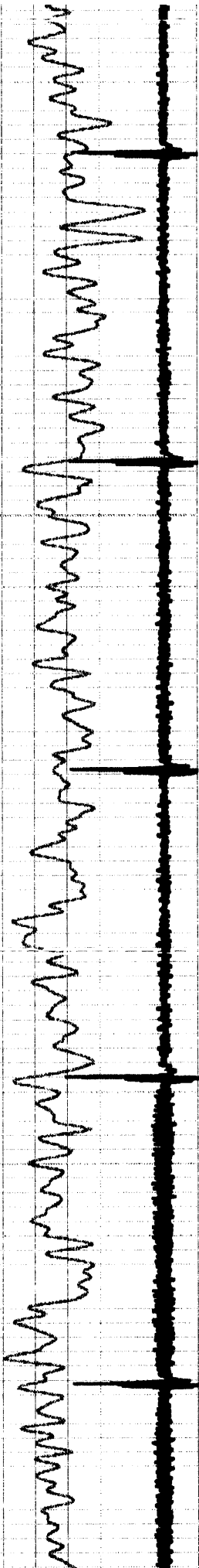




2400

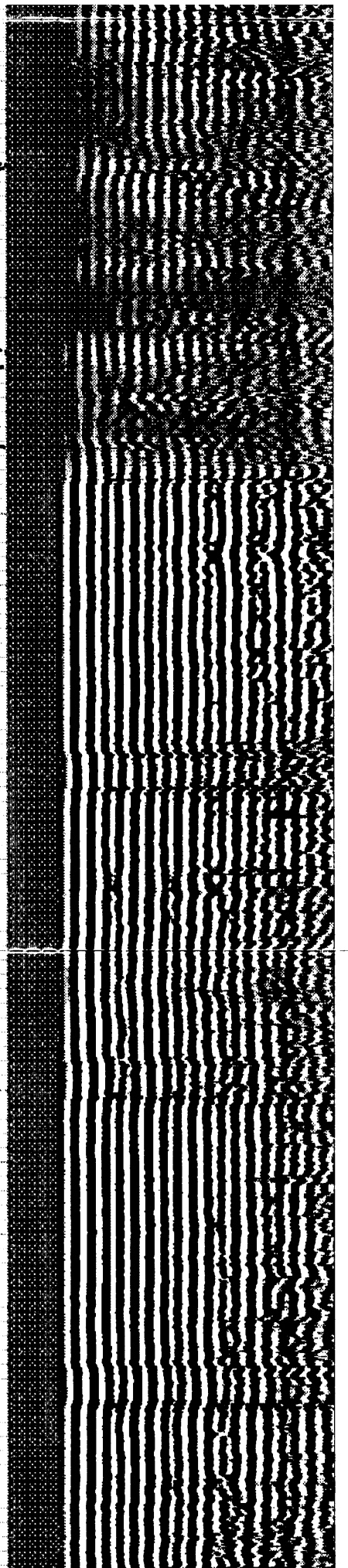
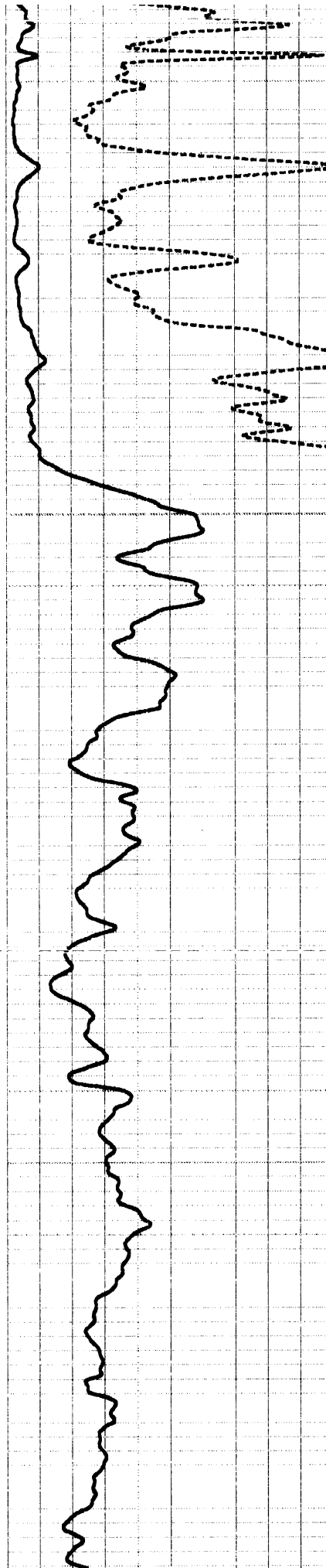
2500



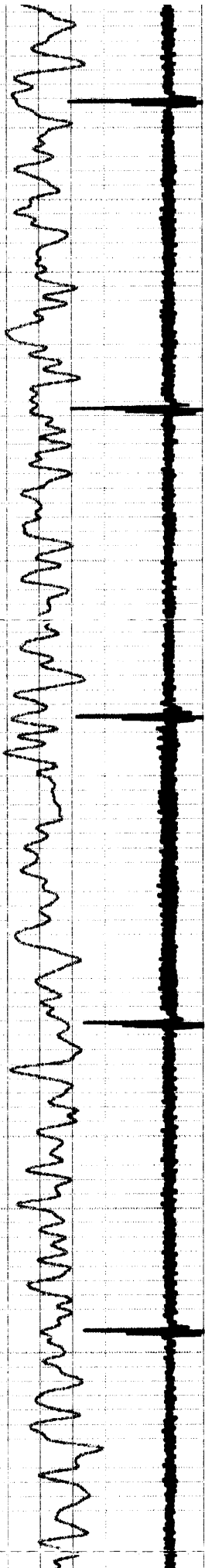


2600

2700

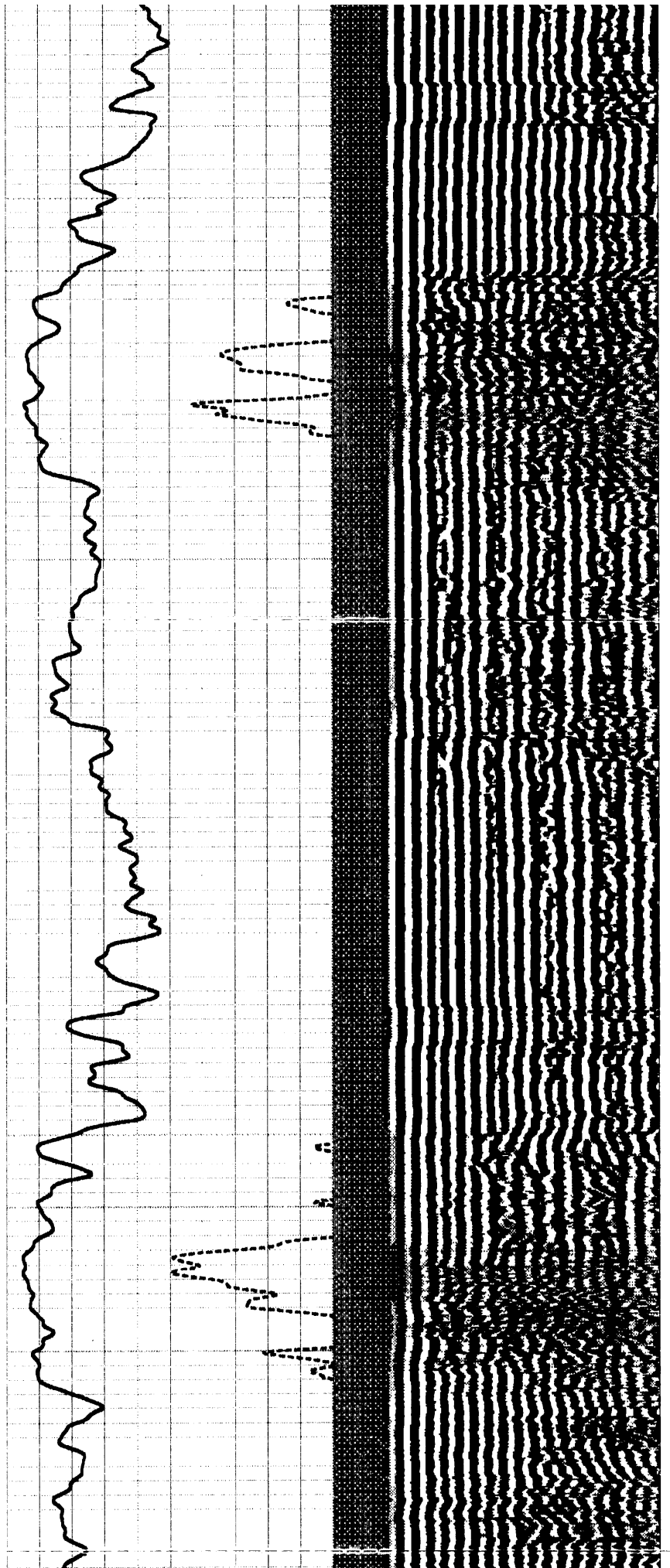


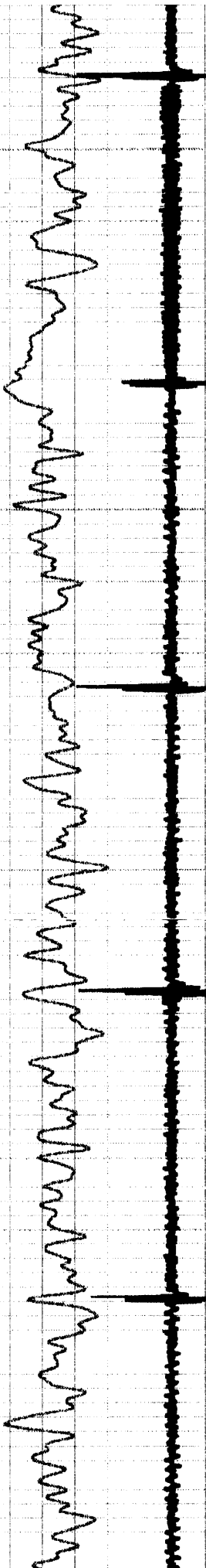




3100

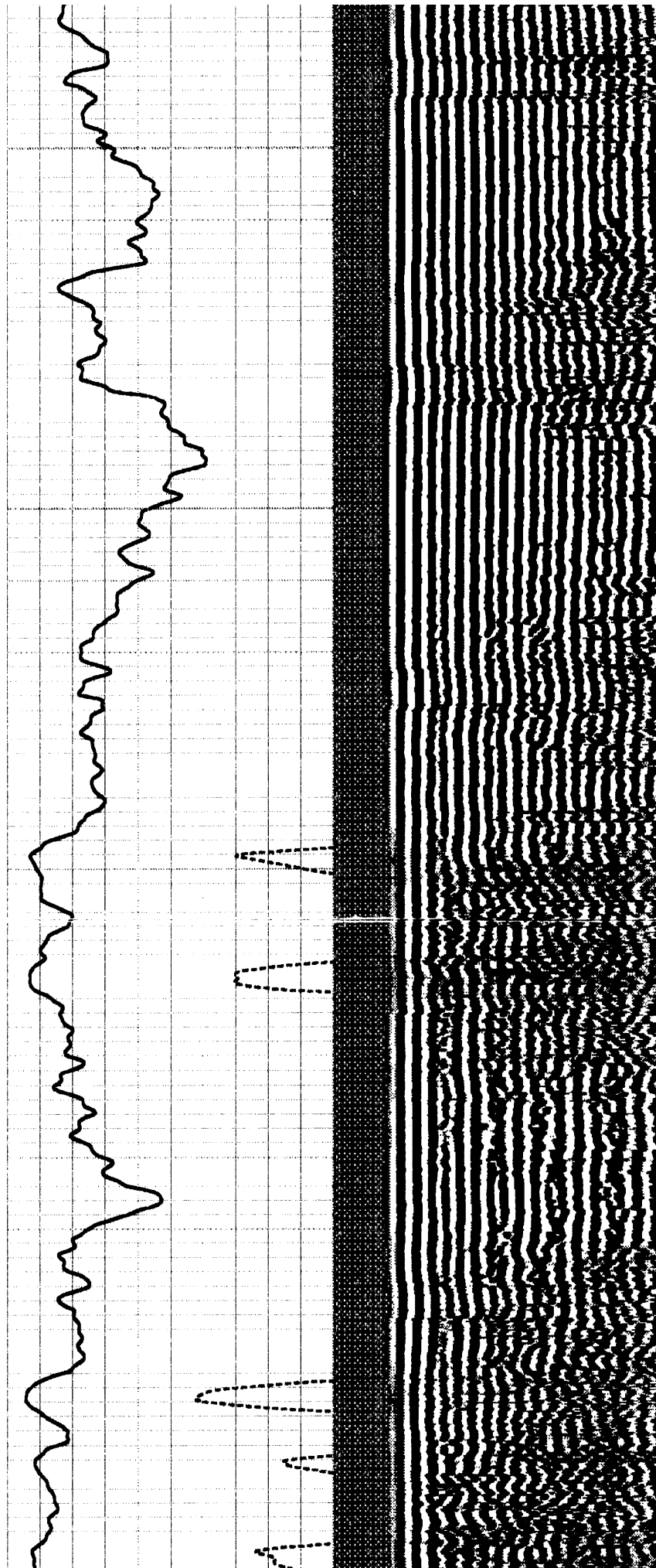
3200

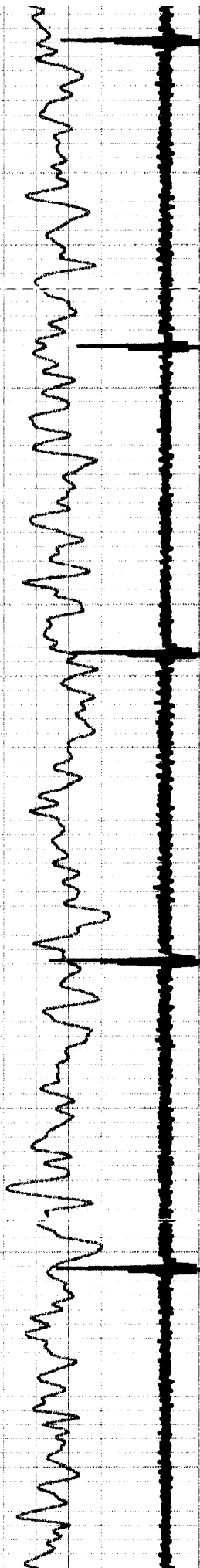




3300

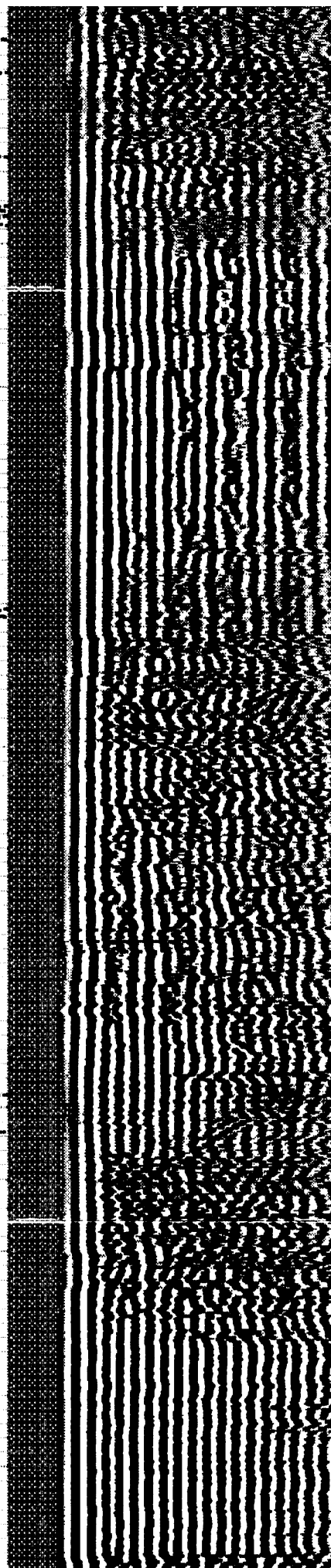
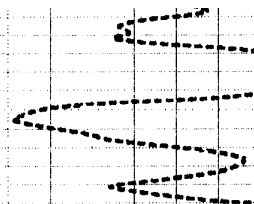
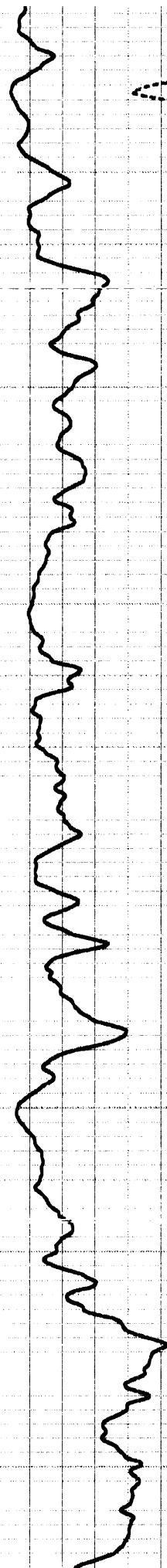
3400

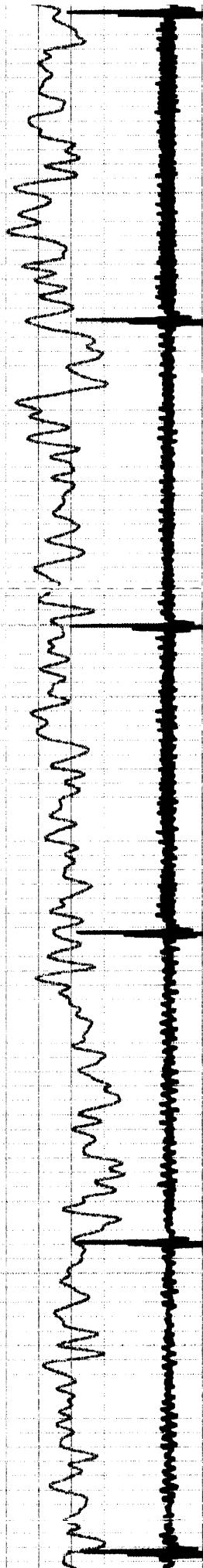




3500

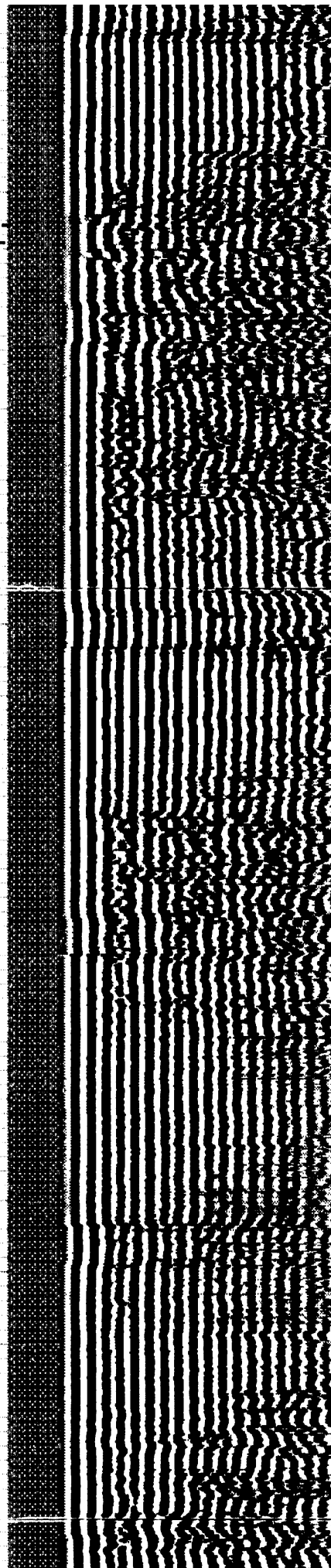
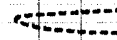
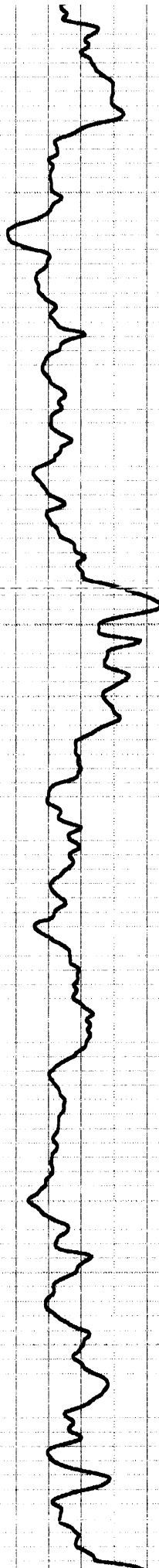
3600

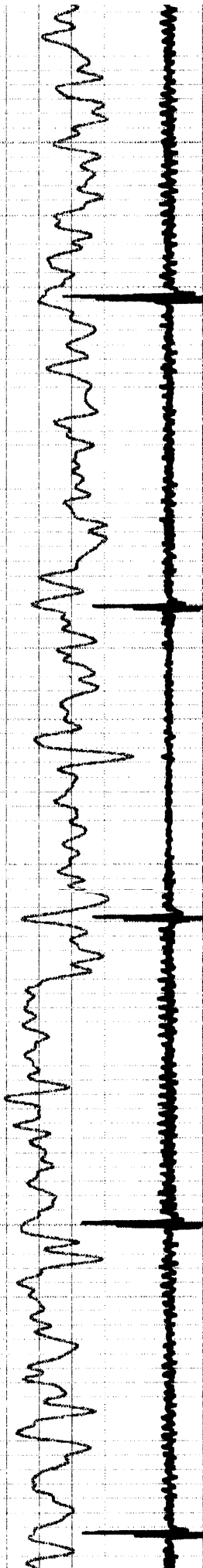




3700

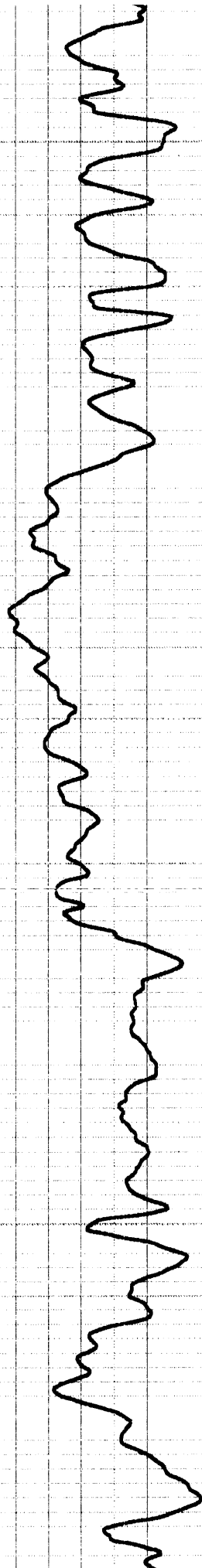
3800



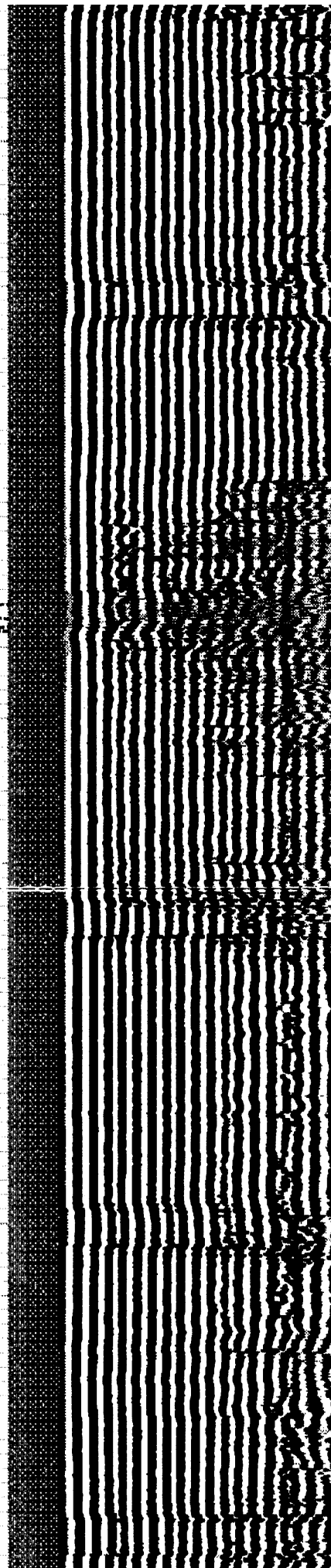


3900

4000



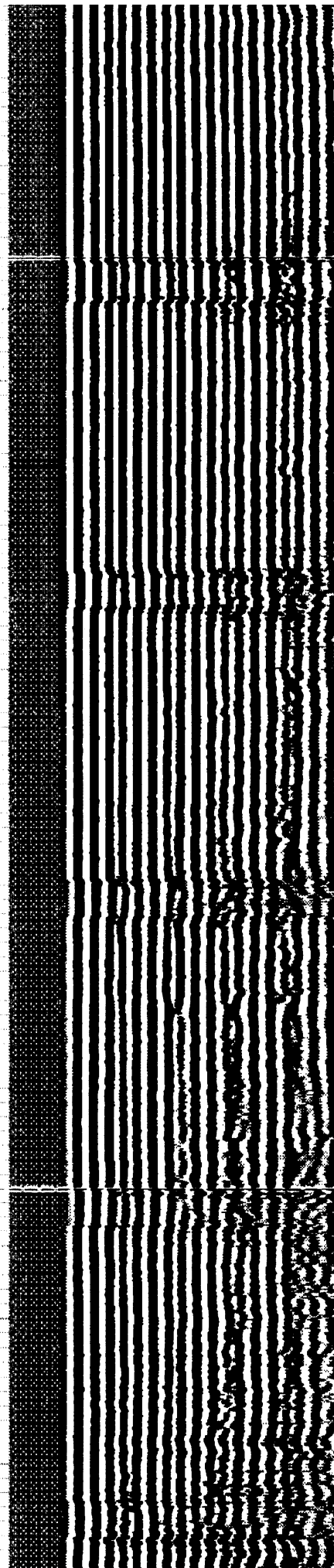
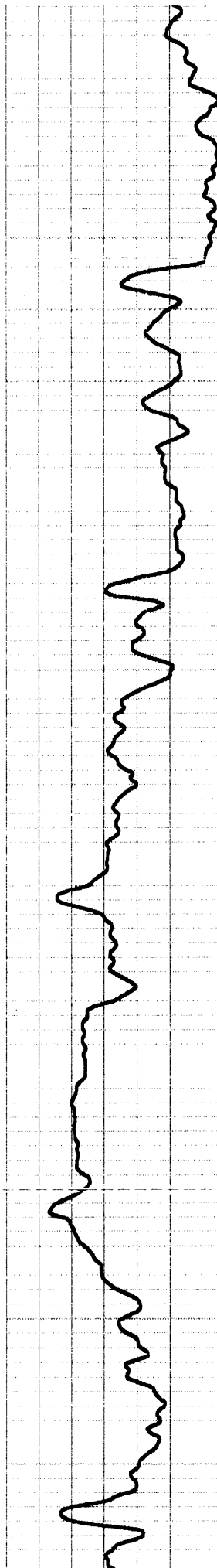
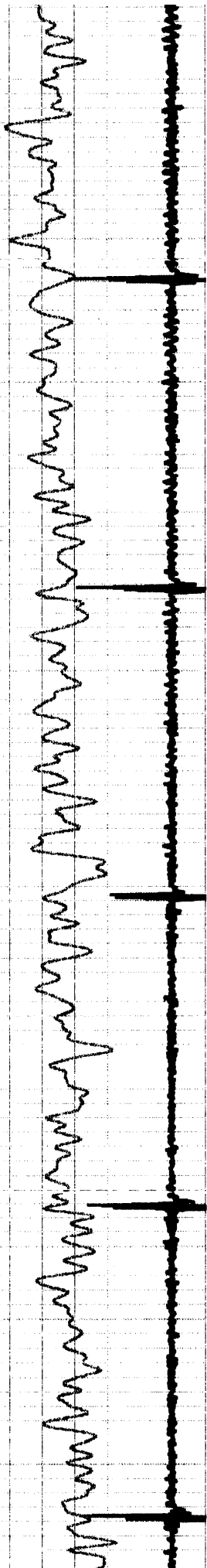
4000

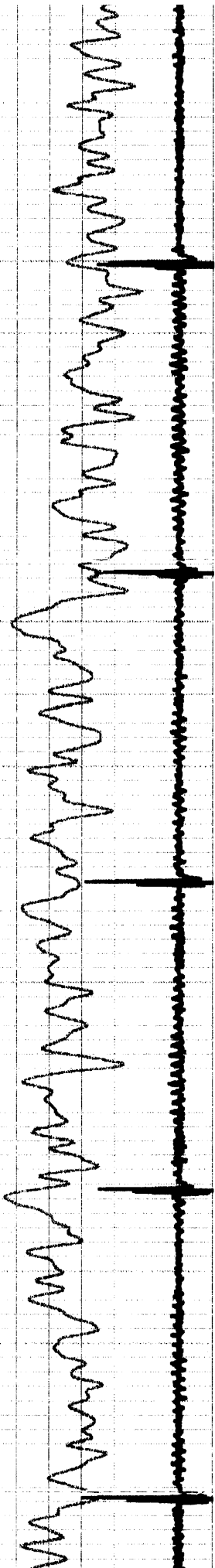


4100

4200

4300

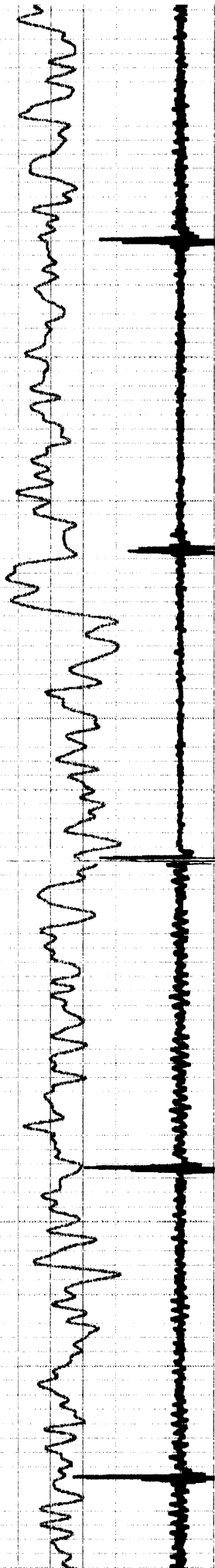




4400

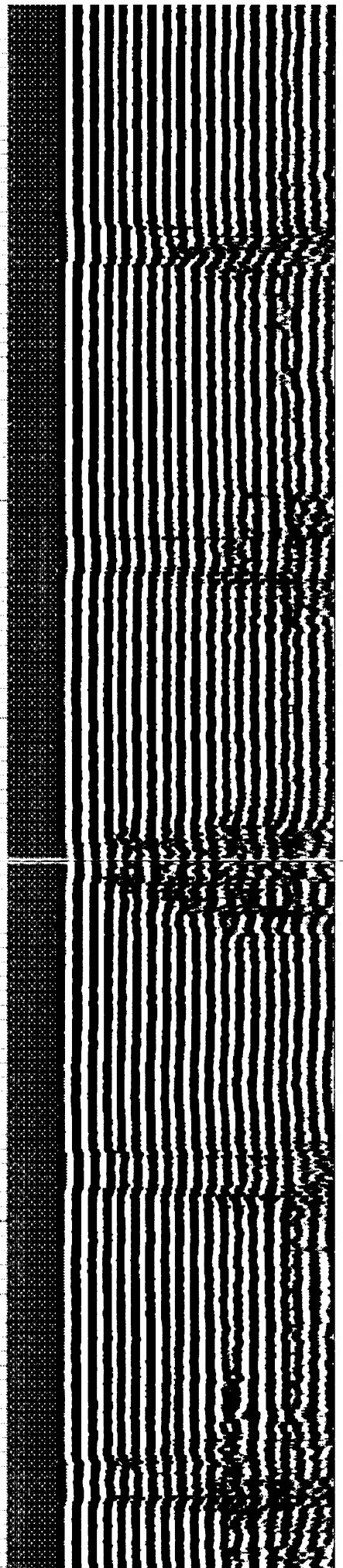
4500

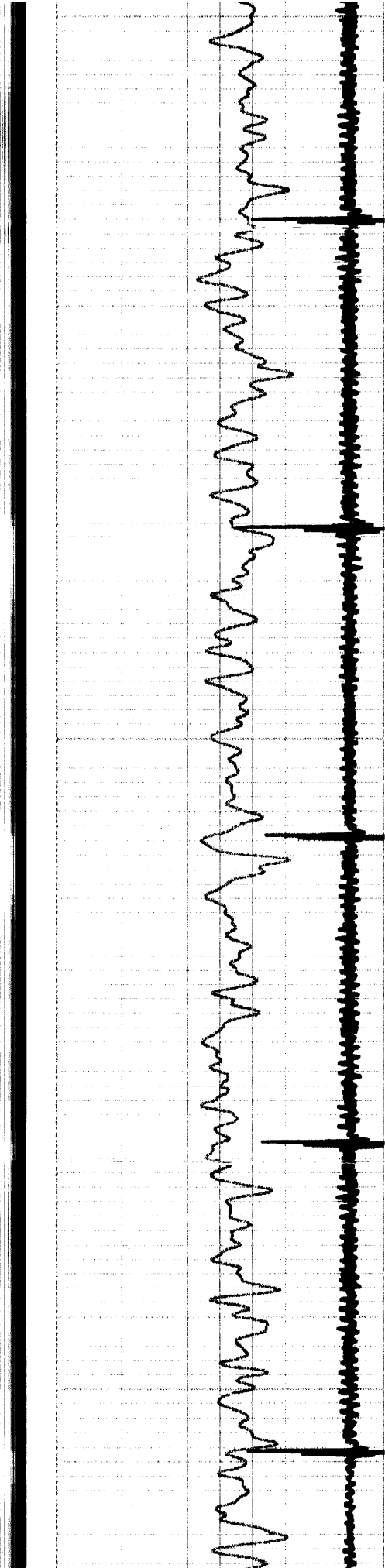




4600

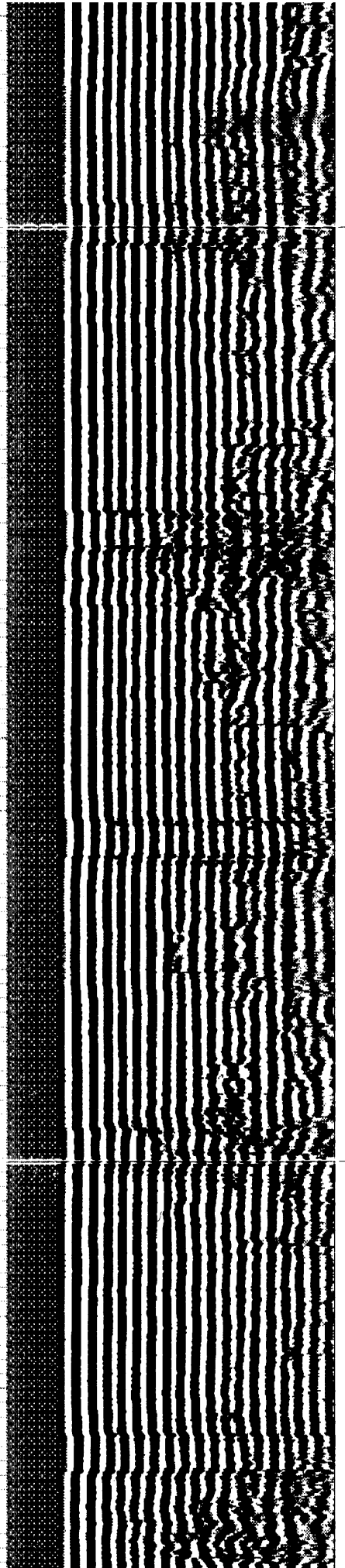
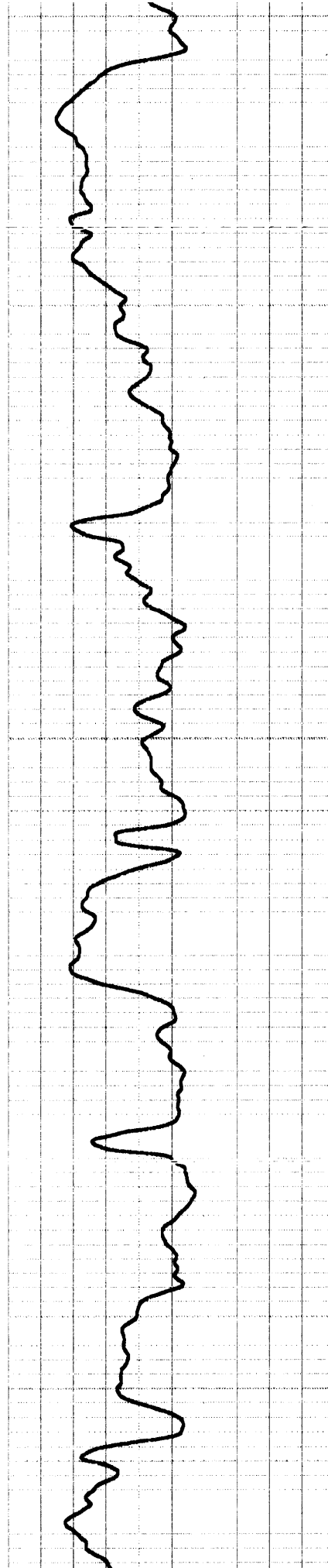
4700

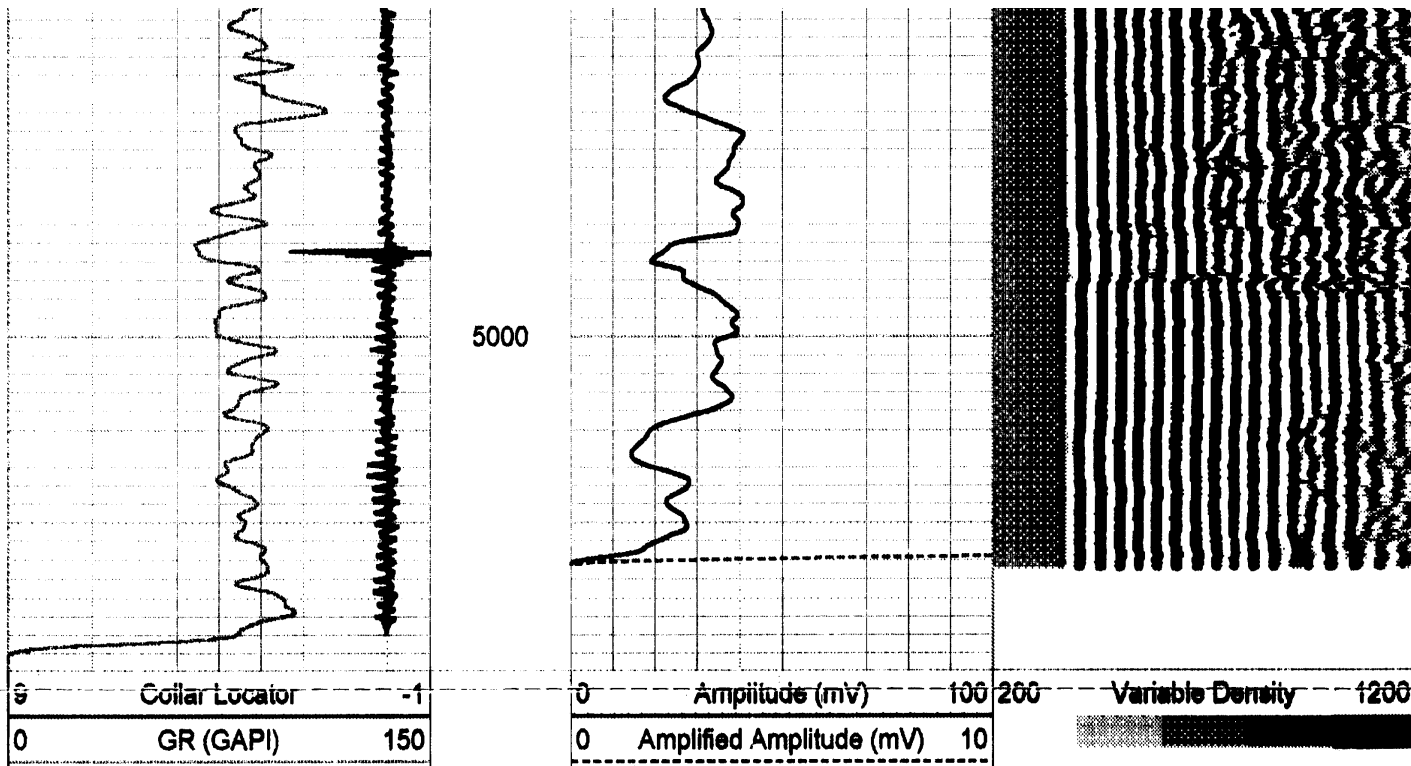




4800

4900





HALLIBURTON

Sussex Pass

5" = 100'

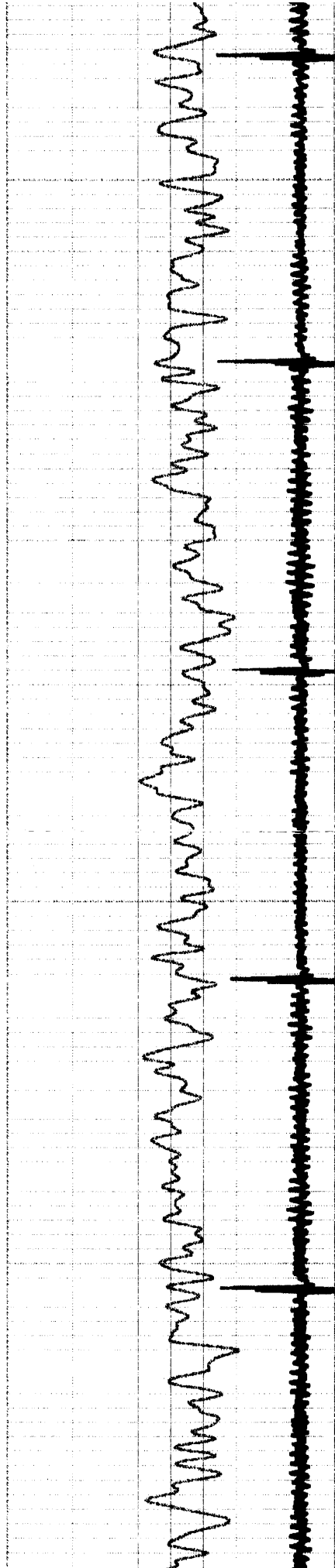
HALLIBURTON

Main Pass

5" = 100'

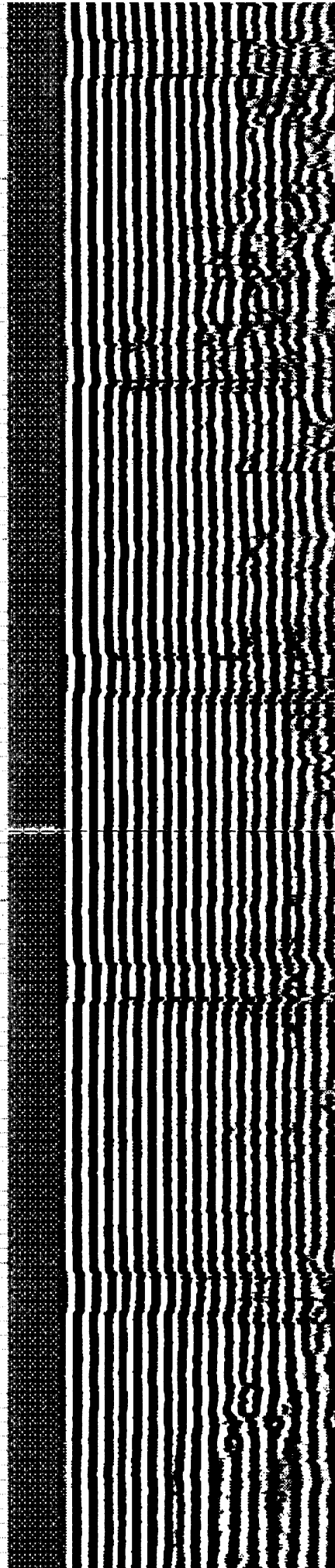
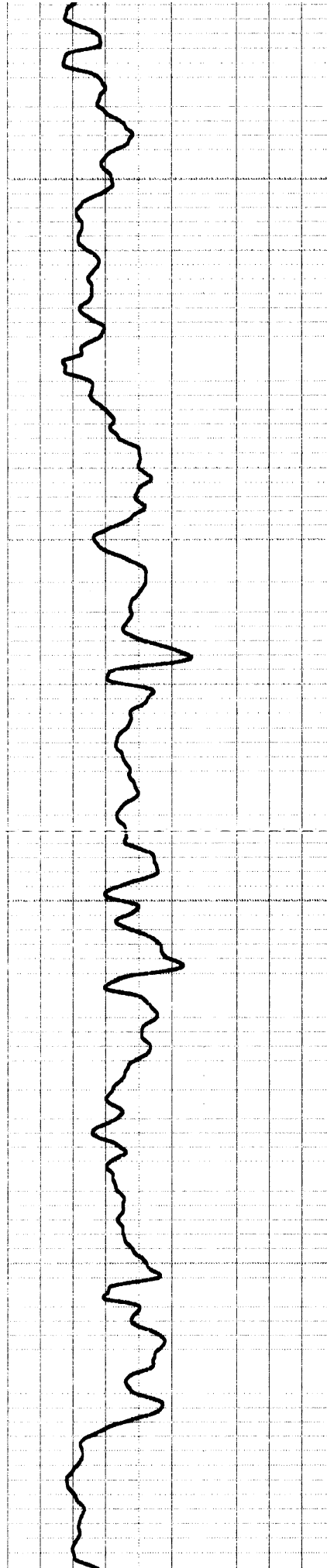
Database File: noble_gerrity_h_33_1_cbl.db
 Dataset Pathname: pass3
 Presentation Format: josh_cbl
 Dataset Creation: Thu Mar 20 16:06:31 2008 by Log Halliburton Casedho
 Charted by: Depth in Feet scaled 1:240

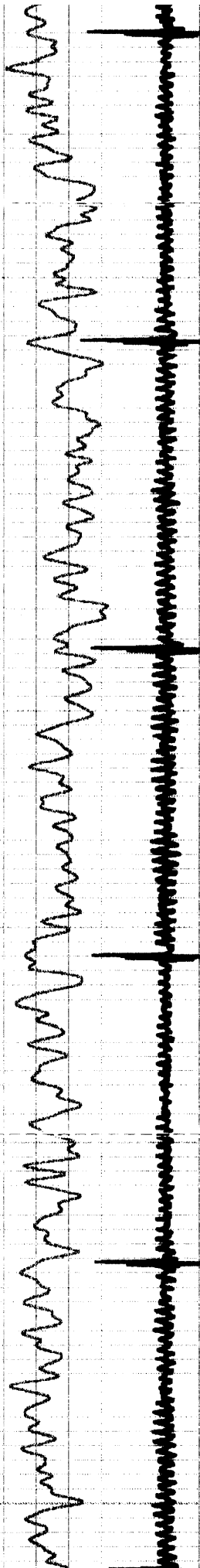




5100

5200

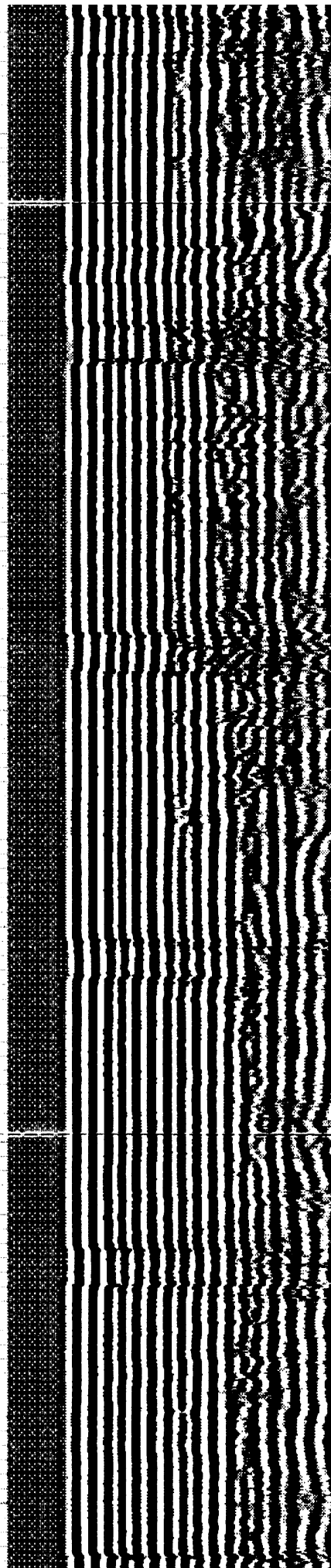


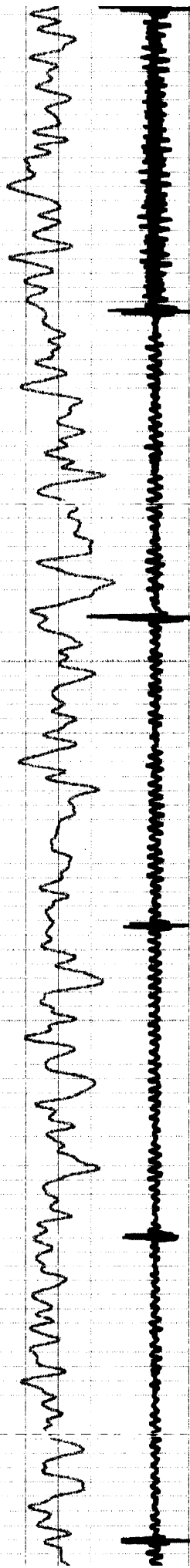


5300



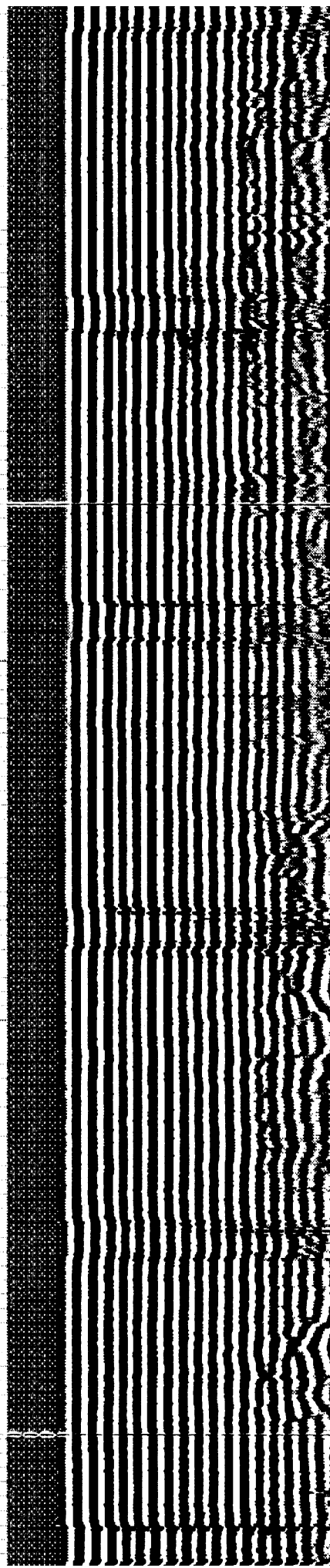
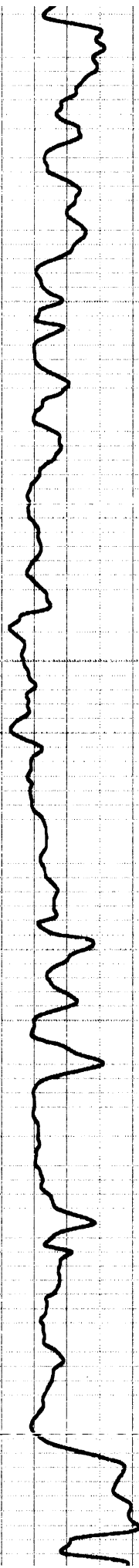
5400





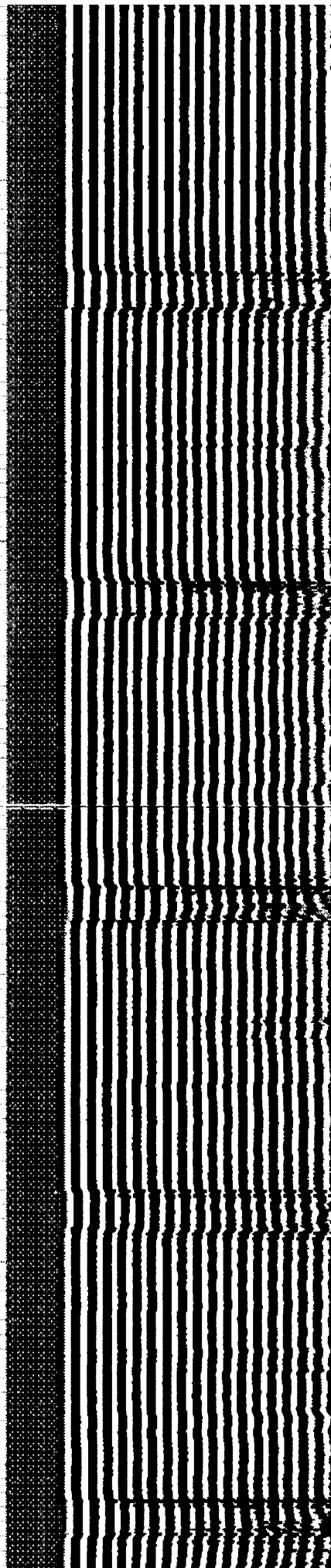
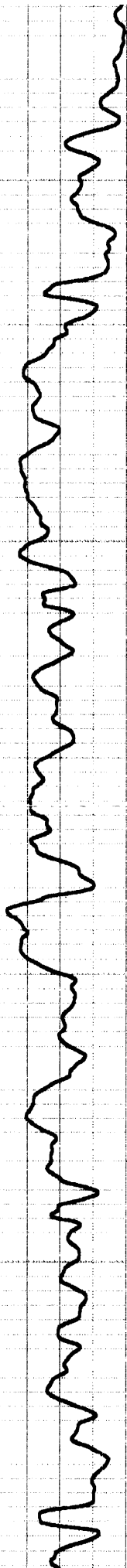
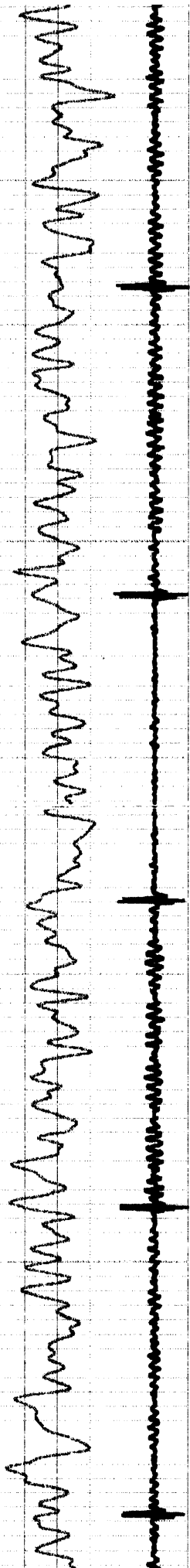
5500

5600



5700

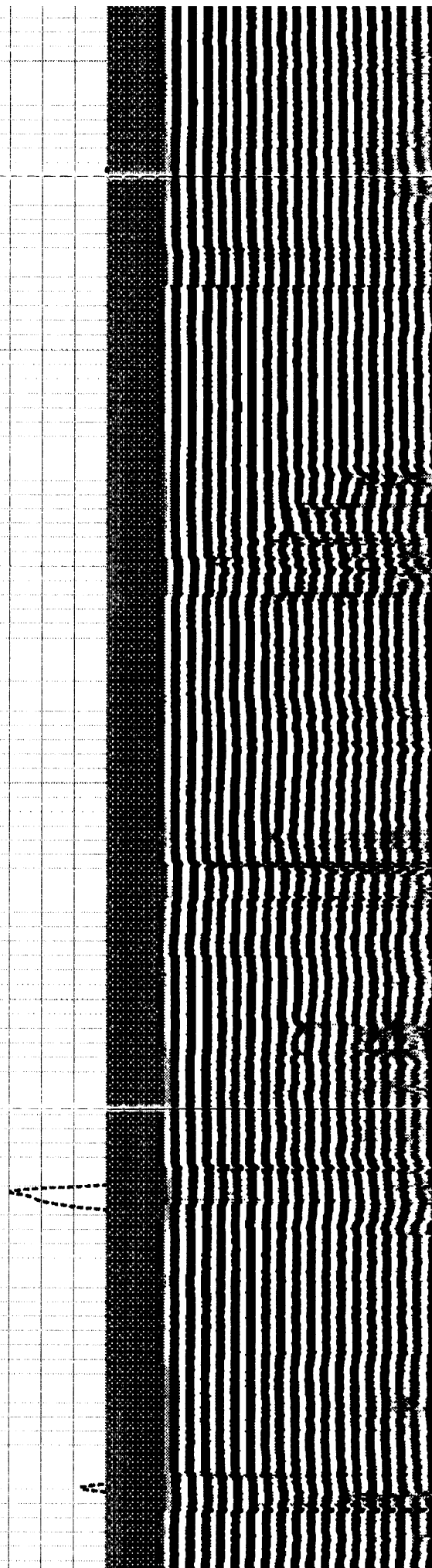
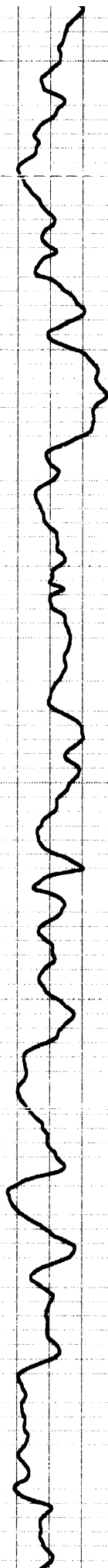
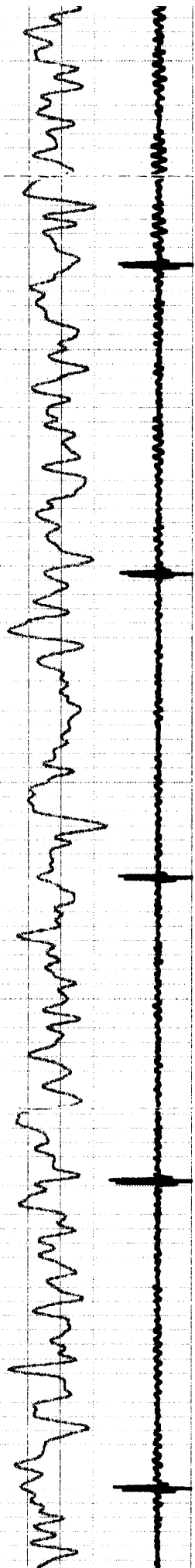
5800

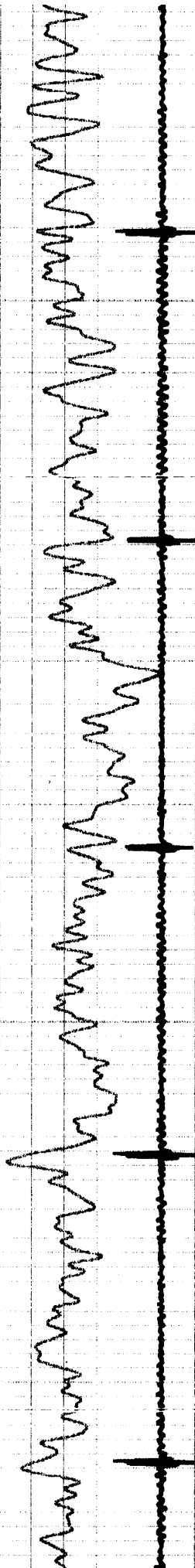


5900

6000

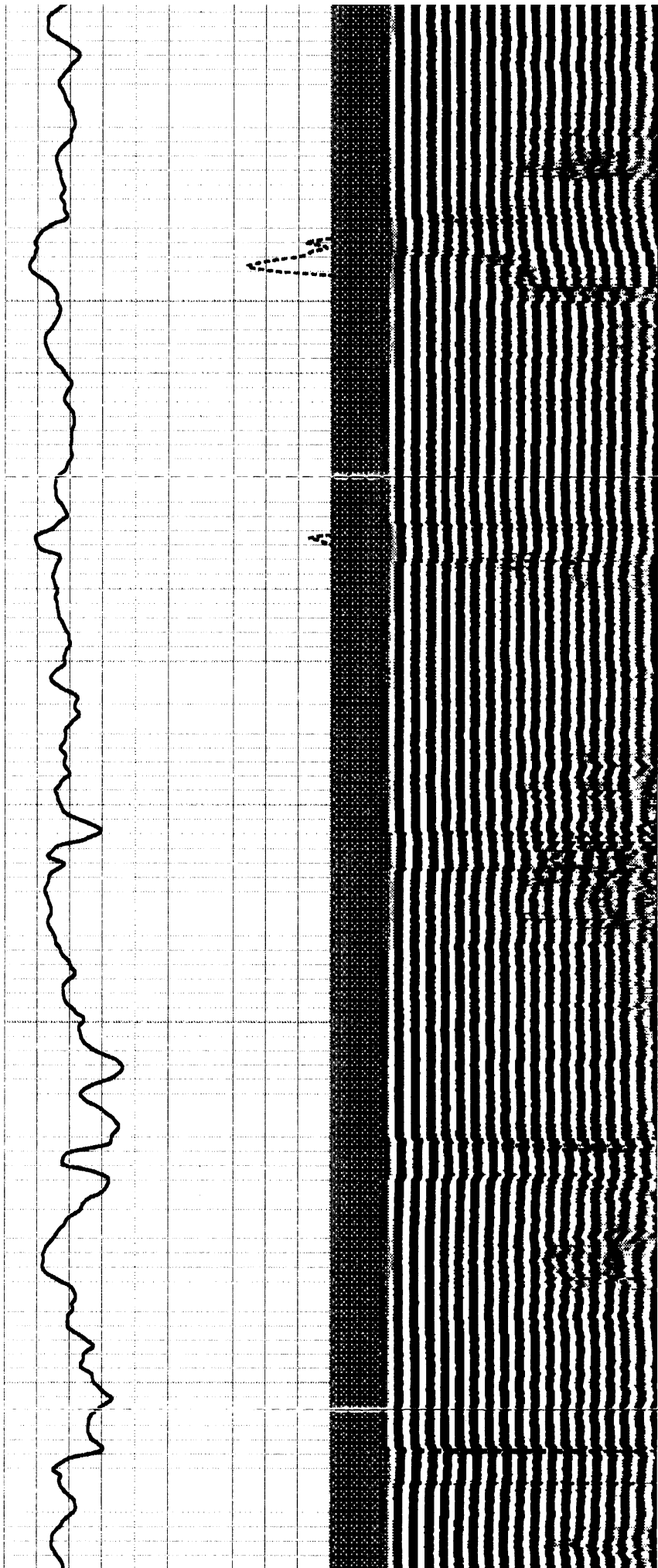
6100

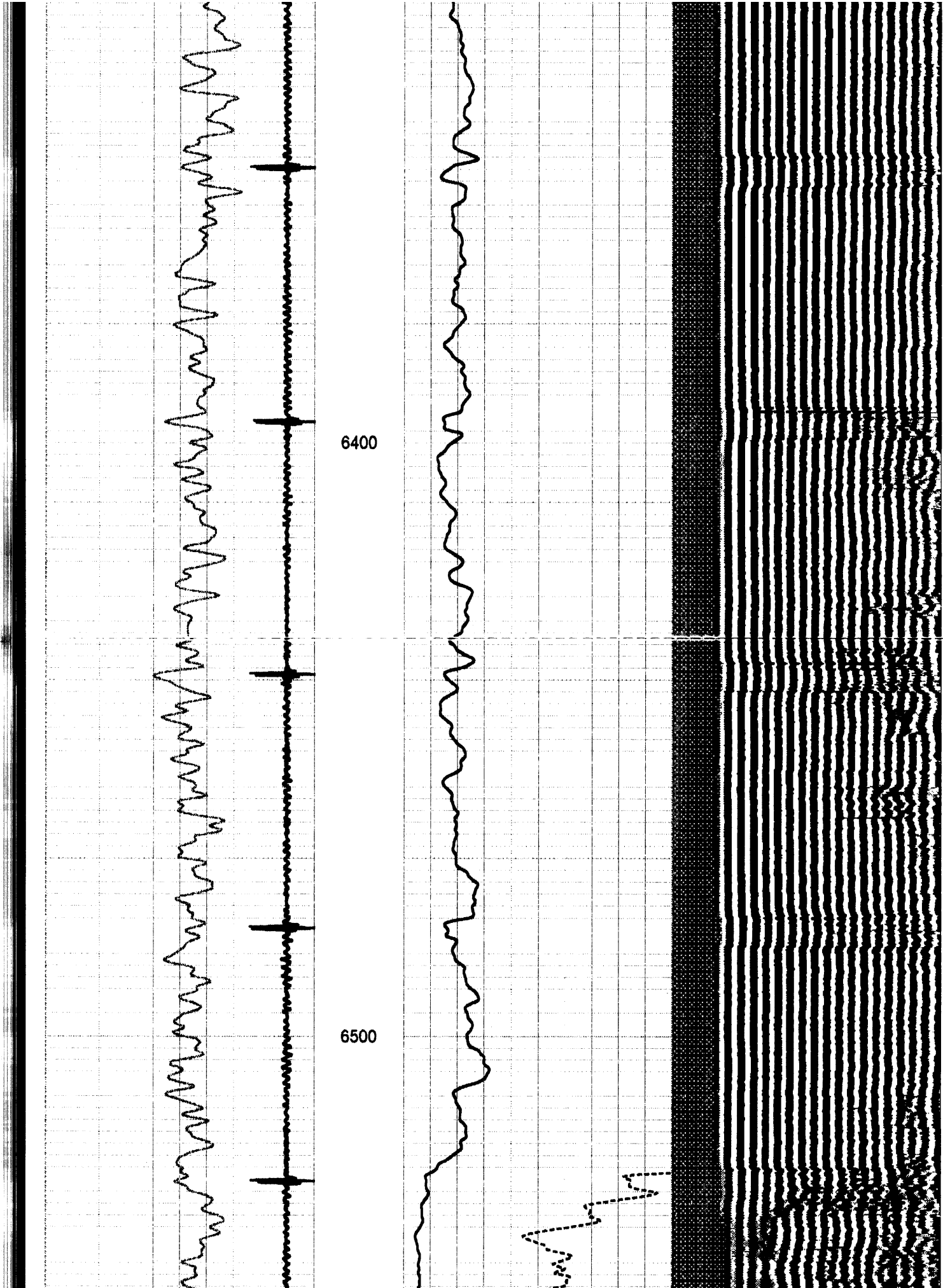


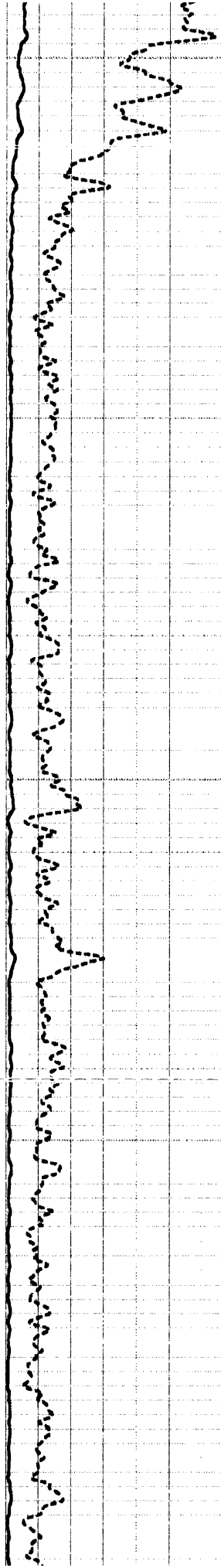
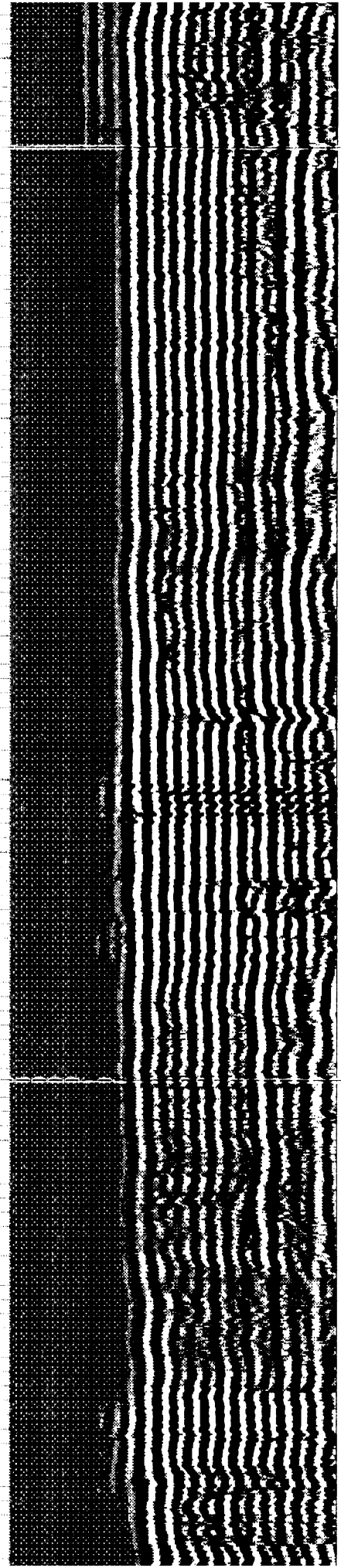


6200

6300

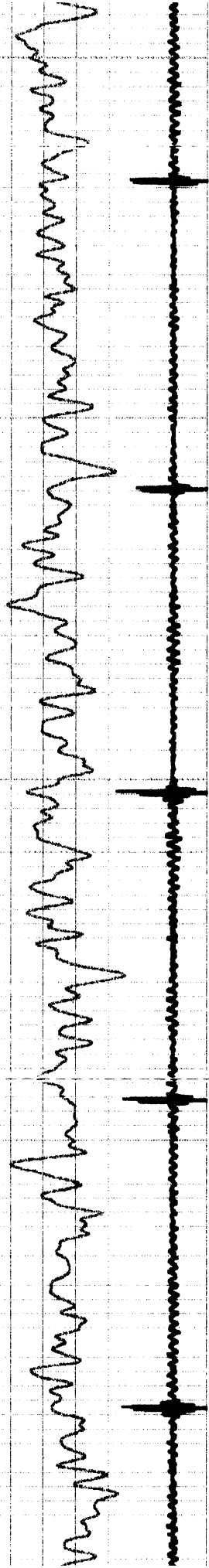






6600

6700

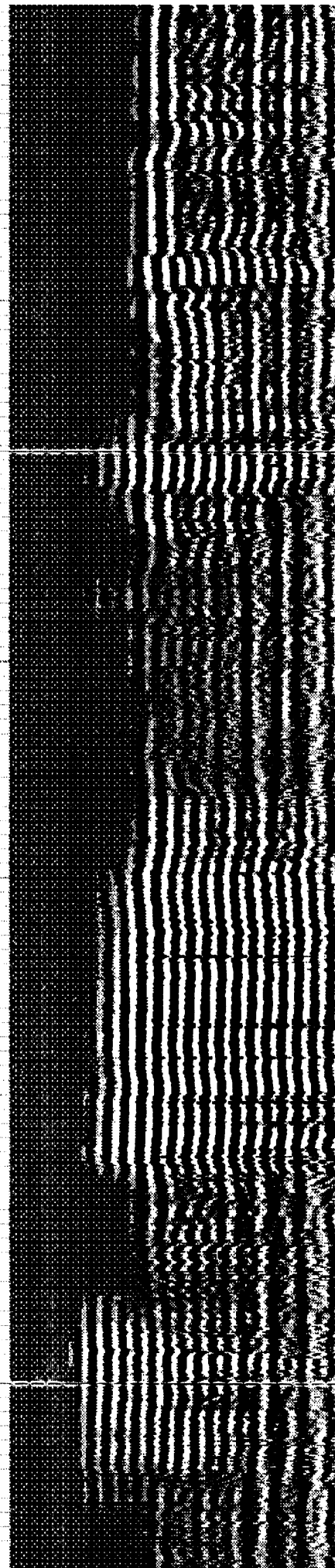
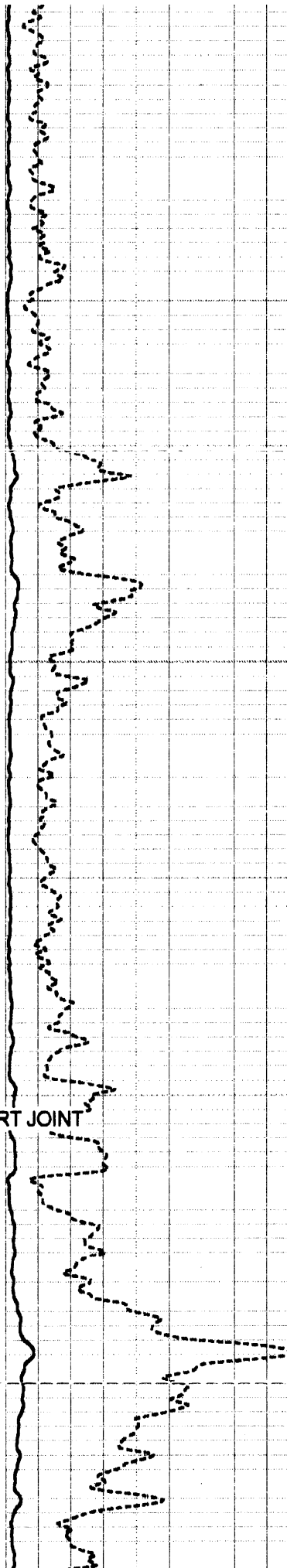
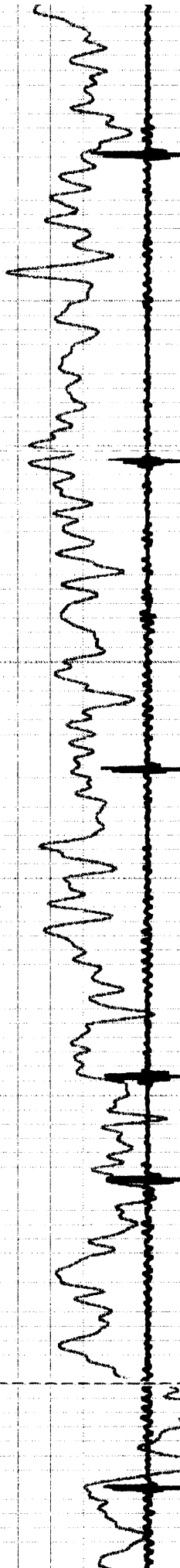


6800

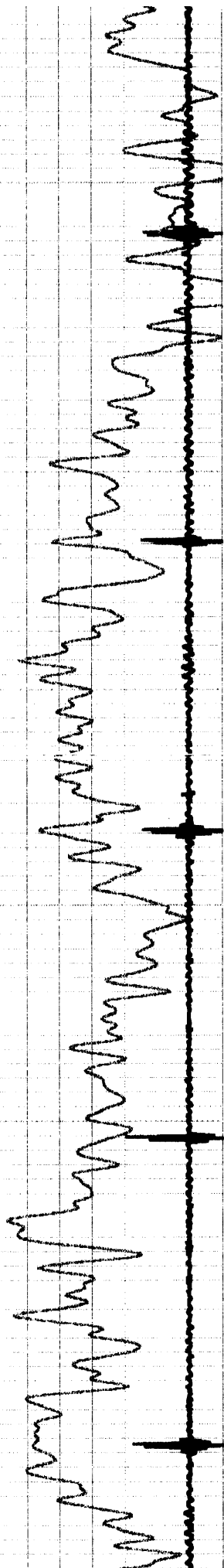
6900

← SHORT JOINT

AN

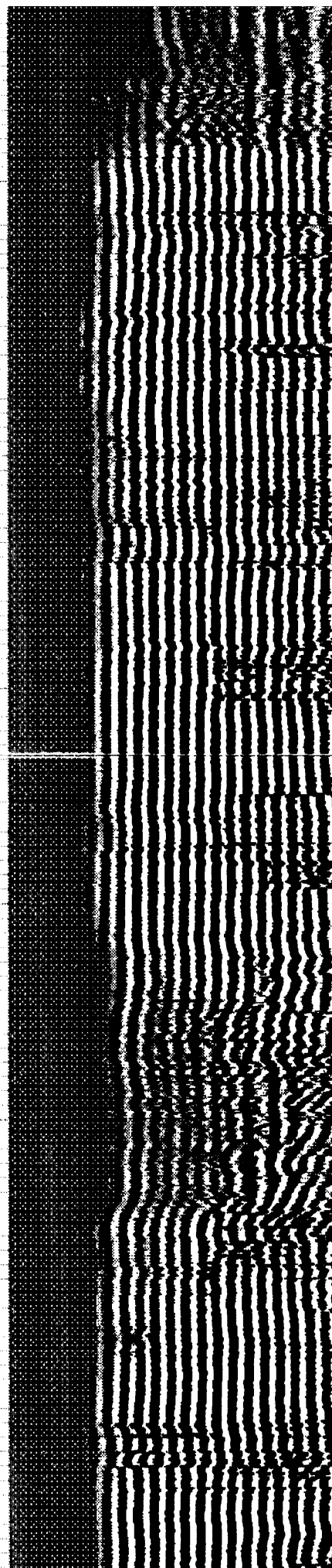
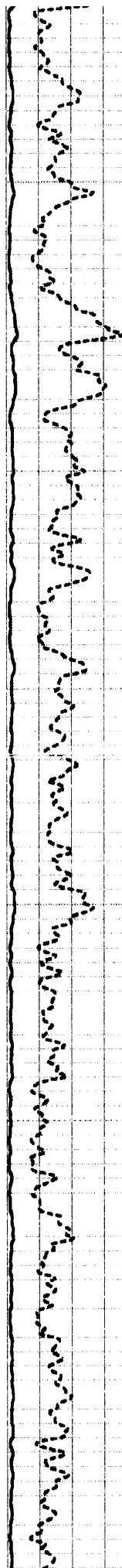


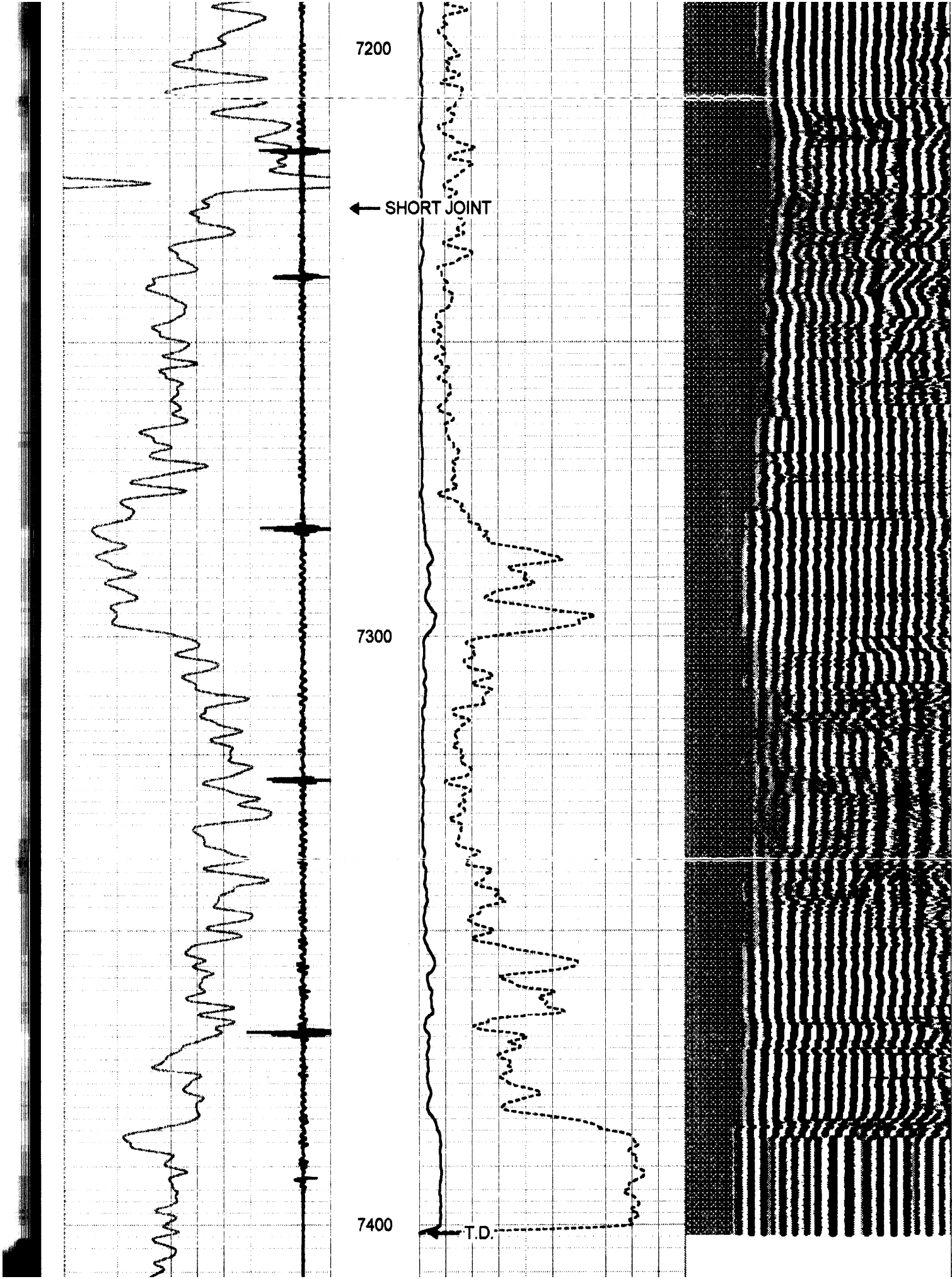
M



7000

7100





9	Collar Locator	-1
0	GR (GAPI)	150

0	Amplitude (mV)	100	200	Variable Density	1200
0	Amplified Amplitude (mV)	10			

HALLIBURTON	Main Pass
	5" = 100'

Company	Noble Energy Production		
Well	Gerrity H 33-1		
Field	Wattenberg		
County	Weld	State	Colorado
HALLIBURTON	Cement Bond Gamma Ray CCL		