

# Access Road Map

NORTH PICEANCE UNIT

PICEANCE CREEK UNIT

FREEDOM UNIT

EXPANDED LIBERTY UNIT

Proposed Location  
Piceance Creek Unit  
297-2C

See Topo "B"

± 0.6 mi.

± 3.4 mi.

± 0.7 mi.

76

3

Rio Blanco ± 17.8 mi.  
Rife ± 36.6 mi.

## Legend

- Proposed Road
- Two Track
- Existing Road



**Tri State  
Land Surveying, Inc.**

180 NORTH VERNAL AVE. VERNAL, UTAH 84078

P: (435) 781-2501  
F: (435) 781-2518



**ExxonMobil Oil Corporation**

Piceance Creek Unit 297-2C  
SEC. 2, T2S, R97W, 6th P.M.  
Rio Blanco County, CO.

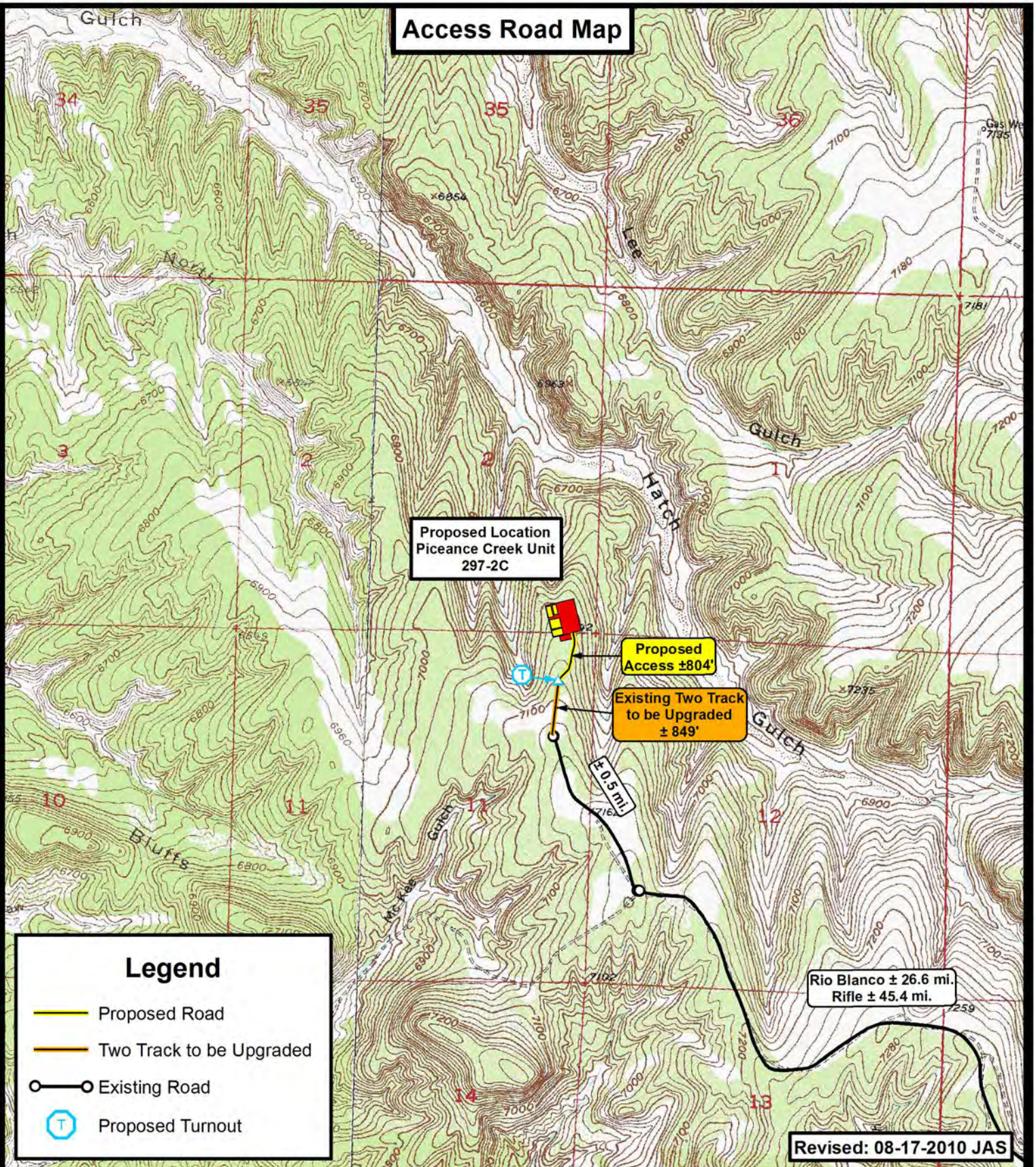
DRAWN BY: JAS  
DATE: 07-14-2010  
SCALE: 1:100,000

**TOPOGRAPHIC MAP**

SHEET  
**A**



# Access Road Map



**Tri State**  
**Land Surveying, Inc.**  
180 NORTH VERNAL AVE. VERNAL, UTAH 84078

P: (435) 781-2501  
F: (435) 781-2518



**ExxonMobil Oil Corporation**

Piceance Creek Unit 297-2C  
SEC. 2, T2S, R97W, 6th P.M.  
Rio Blanco County, CO.

DRAWN BY: JAS  
DATE: 07-14-2010  
SCALE: 1" = 2,000'

**TOPOGRAPHIC MAP**

SHEET  
**B**