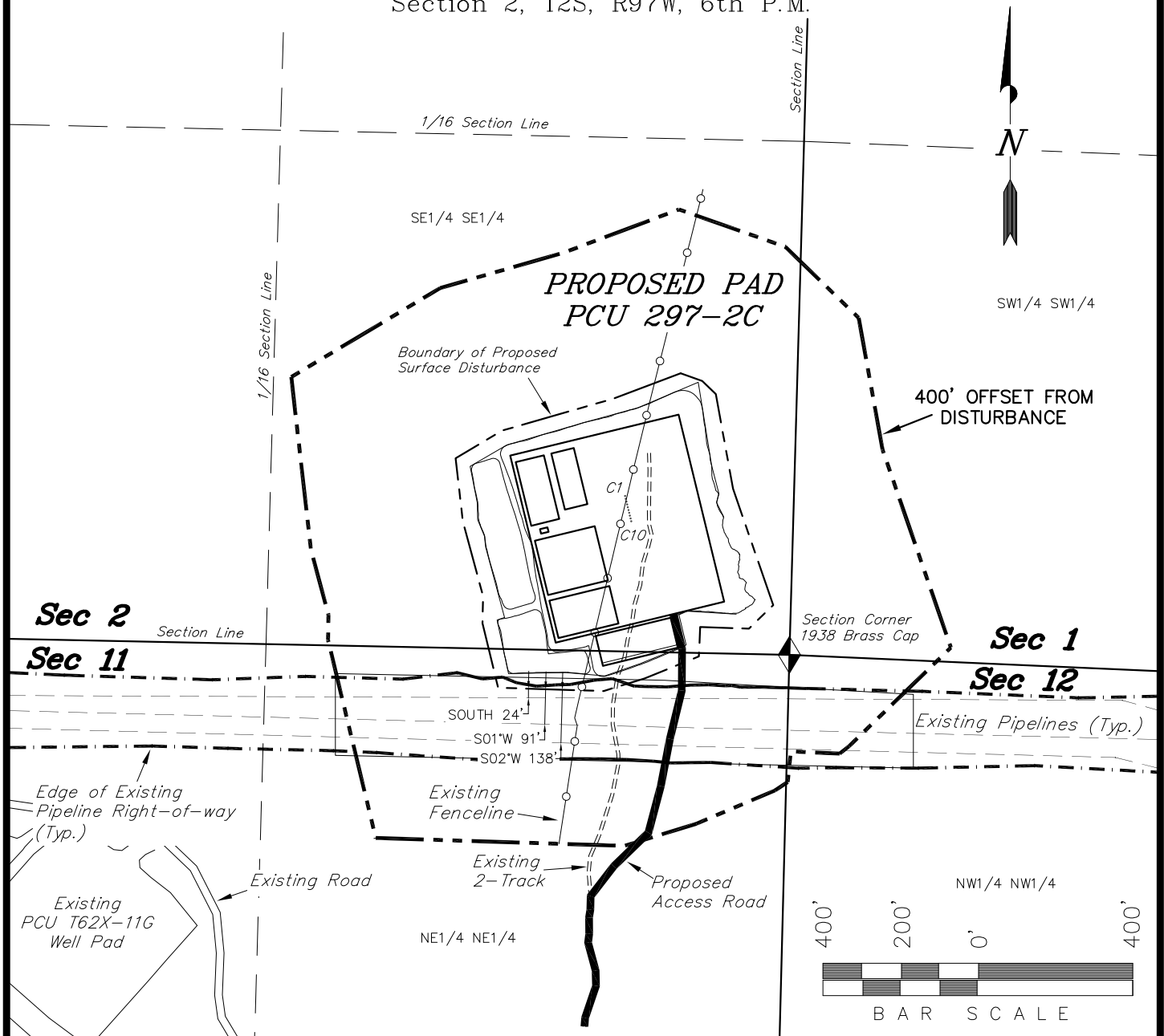


ExxonMobil Oil Corporation

ADDENDUM TO LEGAL PLATS FOR

WELL PAD (PICEANCE CREEK UNIT 297-2C)
PICEANCE CREEK UNIT 297-2C1, C2, C3, C4, C5, C6, C7, C8, C9 & C10
Section 2, T2S, R97W, 6th P.M.



Distances from Well Heads

WELL	BUILDING	ABOVE GROUND UTILITY	PUBLIC ROAD	RAILROAD
C1	S87°E 10,801'	S41°W 2072'	S49°W 1479'	S32°E 32 Miles
C2	S87°E 10,799'	S41°W 2068'	S49°W 1476'	S32°E 32 Miles
C3	S87°E 10,797'	S41°W 2064'	S50°W 1473'	S32°E 32 Miles
C4	S87°E 10,795'	S41°W 2059'	S50°W 1469'	S32°E 32 Miles
C5	S87°E 10,793'	S41°W 2055'	S50°W 1466'	S32°E 32 Miles
C6	S87°E 10,790'	S41°W 2051'	S51°W 1463'	S32°E 32 Miles
C7	S87°E 10,788'	S41°W 2047'	S51°W 1460'	S32°E 32 Miles
C8	S87°E 10,786'	S41°W 2042'	S51°W 1456'	S32°E 32 Miles
C9	S87°E 10,784'	S41°W 2038'	S51°W 1453'	S32°E 32 Miles
C10	S87°E 10,782'	S41°W 2034'	S52°W 1450'	S32°E 32 Miles

SURFACE USE NOTE:

Surface use of the well site is grazing. Vegetation consists mainly of Cedar Trees, Sagebrush & Native Grasses.

SURVEYED BY: S.V. SURVEY DATE: 07-12-10
DRAWN BY: F.T.M. DATE DRAWN: 07-14-10
SCALE: 1" = 400' REVISED:

Tri State
Land Surveying, Inc.
180 NORTH VERNAL AVE. VERNAL, UTAH 84078
(435) 781-2501

SHEET
1k