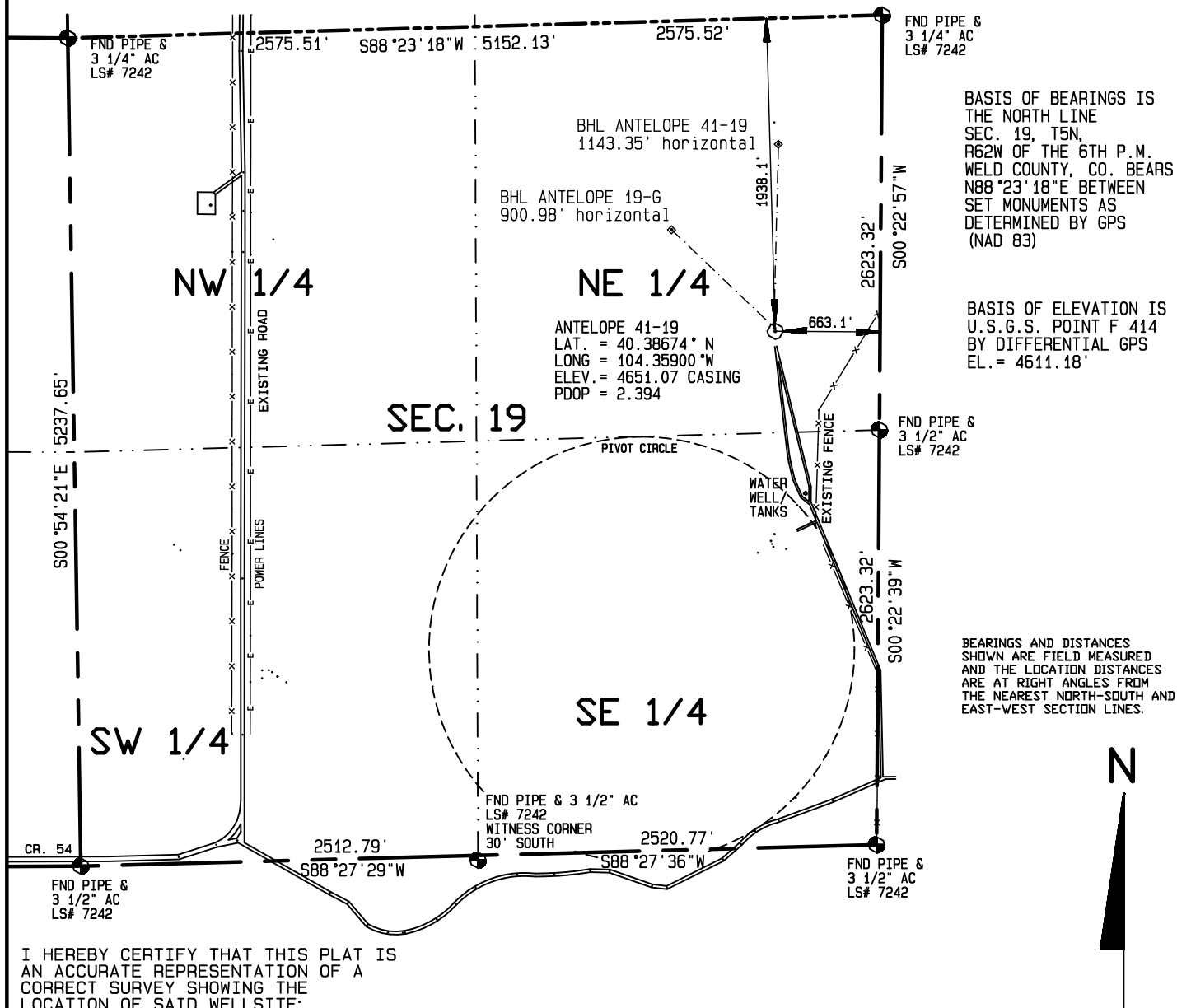


| SURFACE HOLE LOCATIONS |           |            |         |         |        | BOTTOM HOLE LOCATIONS |           |            |         |         |  |
|------------------------|-----------|------------|---------|---------|--------|-----------------------|-----------|------------|---------|---------|--|
| WELL                   | LAT.      | LONG.      | EL.     | FNL     | FEL    | WELL                  | LAT.      | LONG.      | FNL     | FEL     |  |
| 42-19                  | 40.38674° | 104.35900° | 4651.07 | 1978.9' | 663.1' | 42-19                 | 40.38674° | 104.35900° | 1978.9' | 663.1'  |  |
| 19-G                   | 40.38679° | 104.35902° | 4651.60 | 1952.3' | 667.4' | 19-G                  | 40.38850° | 104.36134° | 1319.1' | 1323.2' |  |
| 41-19                  | 40.38685° | 104.35903° | 4651.52 | 1939.6' | 672.0' | 41-19                 | 40.38998° | 104.35894° | 797.8'  | 651.0'  |  |

There are no visible improvements within 400 feet of the location



I HEREBY CERTIFY THAT THIS PLAT IS  
AN ACCURATE REPRESENTATION OF A  
CORRECT SURVEY SHOWING THE  
LOCATION OF SAID WELLSITE:

1000 500 0 1000



Scale 1" = 1000'

Dan Griggs PLS# 38018

**CONTRACT SURVEYORS, LTD.**  
COMPLETE SURVEYING AND GLOBAL POSITIONING

2133 SOUTH BELLAIRE STREET #14  
DENVER COLORADO 80222  
(303) 756-3695



CSL# 10104-43

DATE OF FIELD WORK:

28 JULY, 2010

DATE OF DRAWING:

10 AUGUST, 2010

ANTELOPE 42-19 PAD SITE

. SE 1/4 NE 1/4 SEC. 19, T5N, R62W

BONANAZA CREEK ENERGY OPERATING COMPANY, LLC

WELD COUNTY, COLORADO