
PLAINS EXPLORATION & PRODUCTION CO

**McDaniel 14-5A
BRUSH CREEK
Mesa County , Colorado**

Cement Surface Casing
13-Nov-2008

Job Site Documents

The Road to Excellence Starts with Safety

Sold To #: 339275	Ship To #: 2695219	Quote #:	Sales Order #: 6299067
Customer: PLAINS EXPLORATION & PRODUCTION CO		Customer Rep: Claussen, Curt	
Well Name: McDaniel		Well #: 14-5A	API/UWI #: 05-077-09602
Field: BRUSH CREEK	City (SAP): COLBRAN	County/Parish: Mesa	State: Colorado
Lat: N 39.281 deg. OR N 39 deg. 16 min. 52.907 secs.		Long: W 107.853 deg. OR W -108 deg. 8 min. 47.566 secs.	
Contractor: GREYWOLF 18		Rig/Platform Name/Num: GREYWOLF 18	
Job Purpose: Cement Surface Casing			
Well Type: Development Well		Job Type: Cement Surface Casing	
Sales Person: DUNNING, DUSTIN		Srv Supervisor: MAGERS, MICHAEL MBU ID Emp #: 339439	

Job Personnel

HES Emp Name	Exp Hrs	Emp #	HES Emp Name	Exp Hrs	Emp #	HES Emp Name	Exp Hrs	Emp #
HAYES, JESSE Doug	4	403601	JENSEN, SHANE Lynn	4	441759	KUKUS, CRAIG A	4	369124
MAGERS, MICHAEL Gerard	4	339439						

Equipment

HES Unit #	Distance-1 way	HES Unit #	Distance-1 way	HES Unit #	Distance-1 way	HES Unit #	Distance-1 way
10248057	130 mile	10547379	130 mile	10722398	130 mile	10724583	130 mile
10744648C	130 mile	10998508	130 mile				

Job Hours

Date	On Location Hours	Operating Hours	Date	On Location Hours	Operating Hours	Date	On Location Hours	Operating Hours
11/13/2008	4	1						
TOTAL			<i>Total is the sum of each column separately</i>					

Job

Job Times

Formation Name	Formation Depth (MD)	Top	Bottom	Form Type	Job depth MD	Job Depth TVD	Wk Ht Above Floor	Date	Time	Time Zone
				BHST	1528. ft	1528. ft	5. ft	13 - Nov - 2008	17:00	MST
								13 - Nov - 2008	19:00	MST
								13 - Nov - 2008	22:14	MST
								13 - Nov - 2008	23:04	MST
								14 - Nov - 2008	01:00	MST

Well Data

Description	New / Used	Max pressure psig	Size in	ID in	Weight lbm/ft	Thread	Grade	Top MD ft	Bottom MD ft	Top TVD ft	Bottom TVD ft
12 1/4 Open Hole Section				12.25				.	1530.		
8.625 Surface Casing	Unknown		8.625	7.921	32.			.	1530.		

Sales/Rental/3rd Party (HES)

Description	Qty	Qty uom	Depth	Supplier
PLUG,CMTG,TOP,8 5/8,HWE,7.20 MIN/8.09 MA	1	EA		

Tools and Accessories

Type	Size	Qty	Make	Depth	Type	Size	Qty	Make	Depth	Type	Size	Qty	Make
Guide Shoe					Packer					Top Plug	8.625	1	
Float Shoe					Bridge Plug					Bottom Plug			
Float Collar					Retainer					SSR plug set			
Insert Float										Plug Container	8.625	1	
Stage Tool										Centralizers			

Miscellaneous Materials

Gelling Agt	Conc	Surfactant	Conc	Acid Type	Qty	Conc	%
Treatment Fld	Conc	Inhibitor	Conc	Sand Type	Size		Qty

Fluid Data									
Stage/Plug #: 1									
Fluid #	Stage Type	Fluid Name	Qty	Qty uom	Mixing Density lbm/gal	Yield ft ³ /sk	Mix Fluid Gal/sk	Rate bbl/min	Total Mix Fluid Gal/sk
1	SPACER		20.00	bbl	8.33	.0	.0	.0	
2	Lead Cement	VERSACEM (TM) SYSTEM (452010)	220.0	sacks	12.3	2.37	13.76		13.45
	0.125 lbm	POLY-E-FLAKE (101216940)							
	0.25 %	D-AIR 3000 (101007446)							
	13.448 Gal	FRESH WATER							
3	Tail Cement	SWIFTCEM (TM) SYSTEM (452990)	200.0	sacks	14.2	1.43	6.88		6.71
4	DISPLACEMENT		91.00	bbl	8.33	.0	.0	.0	
Calculated Values		Pressures		Volumes					
Displacement	91.35	Shut In: Instant		Lost Returns	0	Cement Slurry	144	Pad	
Top Of Cement	SURFACE	5 Min		Cement Returns	25	Actual Displacement	91	Treatment	
Frac Gradient		15 Min		Spacers	20	Load and Breakdown		Total Job	255
Rates									
Circulating	RIG	Mixing	8	Displacement	8	Avg. Job	8		
Cement Left In Pipe	Amount	0 ft	Reason	Shoe Joint					
Frac Ring # 1 @	ID	Frac ring # 2 @	ID	Frac Ring # 3 @	ID	Frac Ring # 4 @	ID		
The Information Stated Herein Is Correct				Customer Representative Signature					

The Road to Excellence Starts with Safety

Sold To #: 339275	Ship To #: 2695219	Quote #:	Sales Order #: 6299067
Customer: PLAINS EXPLORATION & PRODUCTION CO		Customer Rep: Claussen, Curt	
Well Name: McDaniel		Well #: 14-5A	API/UWI #: 05-077-09602
Field: BRUSH CREEK	City (SAP): COLLBRAN	County/Parish: Mesa	State: Colorado
Legal Description:			
Lat: N 39.281 deg. OR N 39 deg. 16 min. 52.907 secs.		Long: W 107.853 deg. OR W -108 deg. 8 min. 47.566 secs.	
Contractor: GREYWOLF 18		Rig/Platform Name/Num: GREYWOLF 18	
Job Purpose: Cement Surface Casing			Ticket Amount:
Well Type: Development Well		Job Type: Cement Surface Casing	
Sales Person: DUNNING, DUSTIN		Srv Supervisor: MAGERS, MICHAEL	MBU ID Emp #: 339439

Activity Description	Date/Time	Cht #	Rate bbl/ min	Volume bbl		Pressure psig		Comments
				Stage	Total	Tubing	Casing	
Crew Leave Yard	11/13/2008 17:00							
Arrive At Loc	11/13/2008 18:00							
Assessment Of Location Safety Meeting	11/13/2008 18:05							TD-1528 TP-1527 SJ- 28.84 MW-9.6 CSG- 8 5/8 32 J-55 OH- 12/1/4
Pre-Rig Up Safety Meeting	11/13/2008 18:10							RIG WAS CIRCULATING WHEN HES ARRIVED. HES ARRIVED LATE TO LOCATION. HES RIGGED UP AND WAITED FOR CEMENT TO GET TO LOCATION ALONG WITH PACKET AND PLUG CONTAINER
Rig-Up Equipment	11/13/2008 18:15							
Safety Huddle	11/13/2008 22:00							
Start Job	11/13/2008 22:14							
Other	11/13/2008 22:15		2	2			31.0	FILL LINES
Pressure Test	11/13/2008 22:17		0.5	0.5			3100. 0	PSI TEST OK
Pump Spacer 1	11/13/2008 22:18		4	20			210.0	FRESH WATER
Pump Lead Cement	11/13/2008 22:23		8	92.86			265.0	220 SKS 12.3 PPG 2.37 FT3/SK 13.76 GAL/SK
Pump Tail Cement	11/13/2008 22:35		6	50.9			185.0	200 SKS 14.2 PPG 1.43 FT3/SK 6.88 GAL/SK

Sold To # : 339275

Ship To # :2695219

Quote # :

Sales Order # :

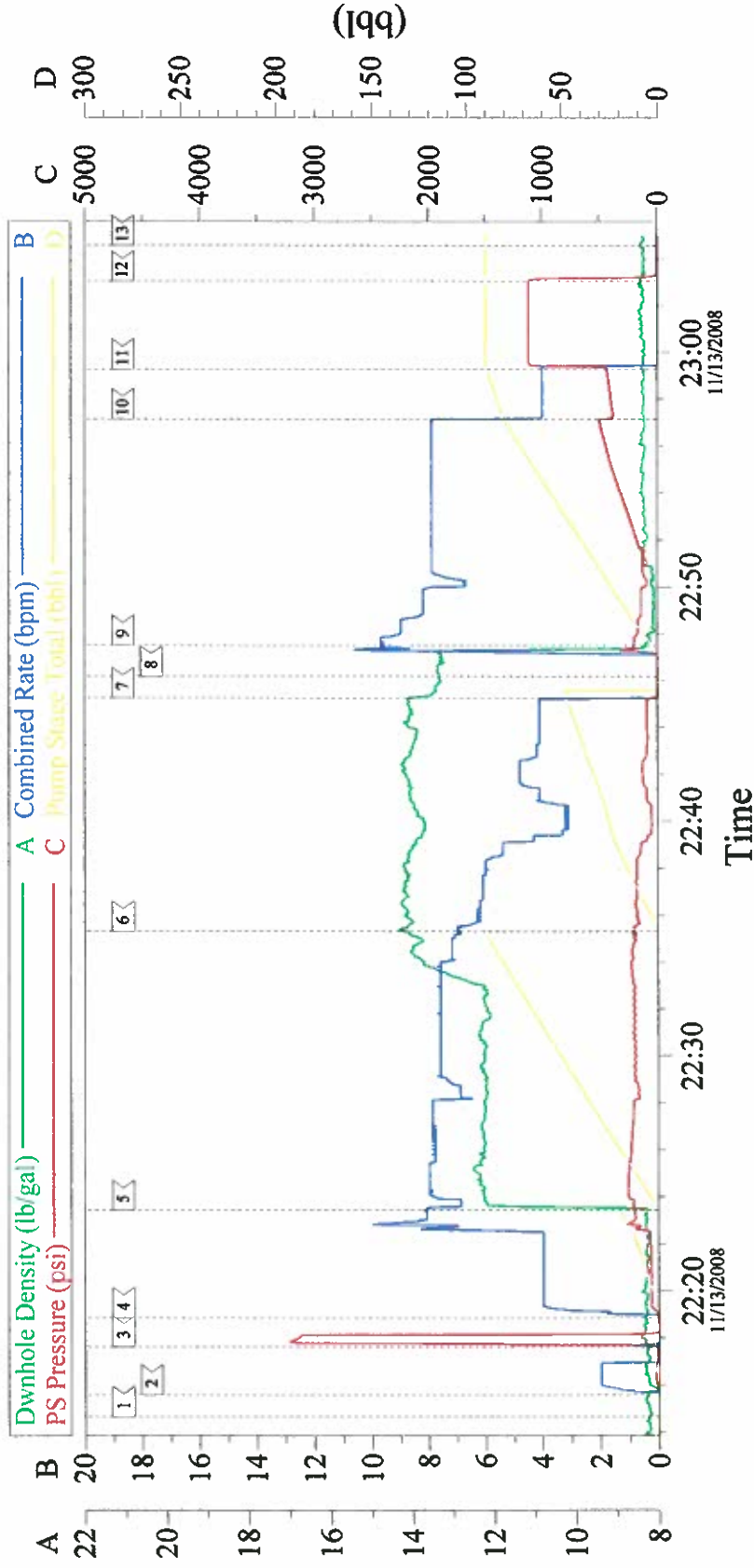
6299067

SUMMIT Version: 7.20.130

Fridav. November 14. 2008 12:18:00

Activity Description	Date/Time	Cht #	Rate bbl/ min	Volume bbl		Pressure psig		Comments
				Stage	Total	Tubing	Casing	
Shutdown	11/13/2008 22:45							
Drop Plug	11/13/2008 22:46							DROPPED PLUG
Pump Displacement	11/13/2008 22:47		8	91.35			500.0	FRESH WATER
Slow Rate	11/13/2008 22:57		4	80			500.0	GOT 25 BBL OF CEMENT TO SURFACE
Bump Plug	11/13/2008 22:59		4	91			580.0	BUMPED PLUG
Check Floats	11/13/2008 23:03			91			1113. 0	FLOATS HELD
End Job	11/13/2008 23:04							HAD GOOD CIRCULATION THROUGHOUT JOB.THANKS FOR USING HES AND THE CREW OF MIKE MAGERS

8 5/8" Surface



Event Log			
1	START JOB	22:14:40	22:15:35
2	FILL LINES	22:15:35	22:17:37
3	PUMP SPACER	22:18:50	22:23:25
4	PUMP LEAD CEMENT	22:45:15	22:46:10
5	DROP PLUG	22:57:09	22:59:17
6	SHUT DOWN	23:04:33	
7	SLOW RATE		
8	END JOB		
9			
10			
11			
12			
13			

Customer: PXP GREYWOLF 18	Job Date: 11/13/2008	Ticket #: 6299067
Well Number: MCDANIEL 14-5A	Job Type: SURFACE	ADC Used: Yes
Supervisor: MIKE MAGERS	Company Rep.: CURT CLAUSSEN	OPERATOR CRAIG KUKUS-ELITE 6

Cem Win v1.7.2
13-Nov-08 23:49