

API Well No.:
MCDANIEL 14-4B

Customer Representative:
CURT CLAUSSEN
Halliburton Operator:
KERRY KING
Ticket No.:
6240439

HALLIBURTON

Well Type: Development Well				Job Type: Cement Surface Casing			
Sales Person: DUNNING, DUSTIN				Srvc Supervisor: KING, KERRY			
MPU ID Emp #: 342363							
Job Personnel							
HES Emp Name	Exp Hrs	Emp #	HES Emp Name	Exp Hrs	Emp #	HES Emp Name	Exp Hrs
CUSTER, JASON Richard		414714	KING, KERRY Sherman		342363	COLLINS, JOSH	
PETERSON, NICHOLAS E		435305	YOUNG, JEREMY R		418013	PHILLIPS, MARK	
Equipment							
HES Unit #	Distance-1 way	HES Unit #	Distance-1 way	HES Unit #	Distance-1 way	HES Unit #	Distance-1 way
10025034	mile	10026549	mile	10249057	mile	10629464	mile
10988964	mile						
Job Hours							
Date	On Location Hours	Operating Hours	Date	On Location Hours	Operating Hours	Date	On Location Hours
10-15-08	9	2.5					
TOTAL				Total is the sum of each column separately			
Job				Job Times			
Formation Name				Date			
Formation Depth (MD) Top				Time			
Bottom				Time Zone			
Form Type				Called Out			
BHST				On Location			
Job depth MD 1537. ft				Job Started			
Job Depth TVD 1537. ft				Job Completed			
Water Depth				Job Completed			
Wk Ht Above Floor 5. ft				Departed Loc			
Perforation Depth (MD) From				Departed Loc			
To							
Well Data							
Description	New / Used	Max pressure psig	Size in	ID in	Weight lbm/ft	Thread	Grade
							Top MD ft
							Bottom MD ft
							Top TVD ft
							Bottom TVD ft
Sales/Rental/3rd Party (HES)							
Description						Qty	Qty uom
PLUG,CMTG,TOP,8 5/8,HWE,7.20 MIN/8.09 MA						1	EA
Depth						Supplier	
Tools and Accessories							
Type	Size	Qty	Make	Depth	Type	Size	Qty
Guide Shoe					Top Plug	8 5/8	1
Float Shoe					Bottom Plug		
Float Collar					SSR plug set		
Insert Float					Plug Container	8 5/8	1
Stage Tool					Centralizers		
Miscellaneous Materials							
Gelling Agt		Conc		Surfactant		Conc	Acid Type
Treatment Fld		Conc		Inhibitor		Conc	Sand Type
							Qty
							Size
							Conc
							Qty
							%

Fluid Data										
Stage/Plug #: 1										
Fluid #	Stage Type	Fluid Name	Qty	Qty uom	Mixing Density lbm/gal	Yield ft ³ /sk	Mix Fluid Gal/sk	Rate bbl/min	Total Mix Fluid Gal/sk	
1	WATER SPACER		20.0	bbl	.	.0	.0	.0		
2	Lead Cement	VERSACEM (TM) SYSTEM (452010)	240.0	sacks	12.3	2.38	13.75			
	0.432 Gal	FRESH WATER								
3	Tail Cement	SWIFTCES (TM) SYSTEM (452990)	220.0	sacks	14.2	1.43	6.88			
4	DISPLACEMENT	FRESH WATER	91.9	bbl	.	.0	.0	.0		
Calculated Values			Pressures			Volumes				
Displacement			Shut In: Instant			Lost Returns			Cement Slurry	
Top Of Cement			5 Min			Cement Returns		100	Actual Displacement	
Frac Gradient			15 Min			Spacers			Load and Breakdown	
									Total Job	
Rates										
Circulating			Mixing		8	Displacement		7	Avg. Job	
Cement Left In Pipe		Amount	28.4 ft	Reason	Shoe Joint					
Frac Ring # 1 @		ID	Frac ring # 2 @		ID	Frac Ring # 3 @		ID	Frac Ring # 4 @	
The Information Stated Herein Is Correct					Customer Representative Signature					

The Road to Excellence Starts with Safety

Sold To #: 339275	Ship To #: 2688487	Quote #:	Sales Order #: 6240439
Customer: PLAINS EXPLORATION & PRODUCTION CO		Customer Rep: CURT CLAUSSEN	
Well Name: MCDANIEL	Well #: 14-4B	API/UWI #: 05-077-09604	
Field: BRUSH CREEK	City (SAP): COLLBRAN	County/Parish: Mesa	State: Colorado
Legal Description:			
Lat: N 39.281 deg. OR N 39 deg. 16 min. 53.069 secs.		Long: W 107.854 deg. OR W -108 deg. 8 min. 47.105 secs.	
Contractor: GREYWOLF 809		Rig/Platform Name/Num: GreyWolf 809	
Job Purpose: Cement Surface Casing			Ticket Amount:
Well Type: Development Well		Job Type: Cement Surface Casing	
Sales Person: DUNNING, DUSTIN		Srvc Supervisor: KING, KERRY	MBU ID Emp #: 342363

Activity Description	Date/Time	Cht #	Rate bbl/ min	Volume bbl		Pressure psig		Comments
				Stage	Total	Tubing	Casing	
Arrive at Location from Service Center	10/15/2008 08:00							CASERS WERE RIGGED DOWN AND PREPARING TO LEAVE LOCATION WHEN CEMENT CREW ARRIVED. CEMENT CREW WAS BAILE TO SPOT EQUIPMENT AND RIG UP UPON ARRIVAL.
Assessment Of Location Safety Meeting	10/15/2008 08:10							TP 1537, TD 1537, 24FT SHOE JOINT, 8 5/8" 32#/FT CASING. 9.9PPG MUD WIEGHT. 12 1/4" HOLE. 12 CENTRALIZERS USED. PLUG CONTAINER # 1039 WAS USED FOR JOB.
Pre-Job Safety Meeting	10/15/2008 16:00							WELL WAS CIRCULATED FOR 3.5 HRS PRIOR TO CEMENTING. PIPE WAS NOT RECIPROCATED DURING CIRCULATION OR CEMENTING.

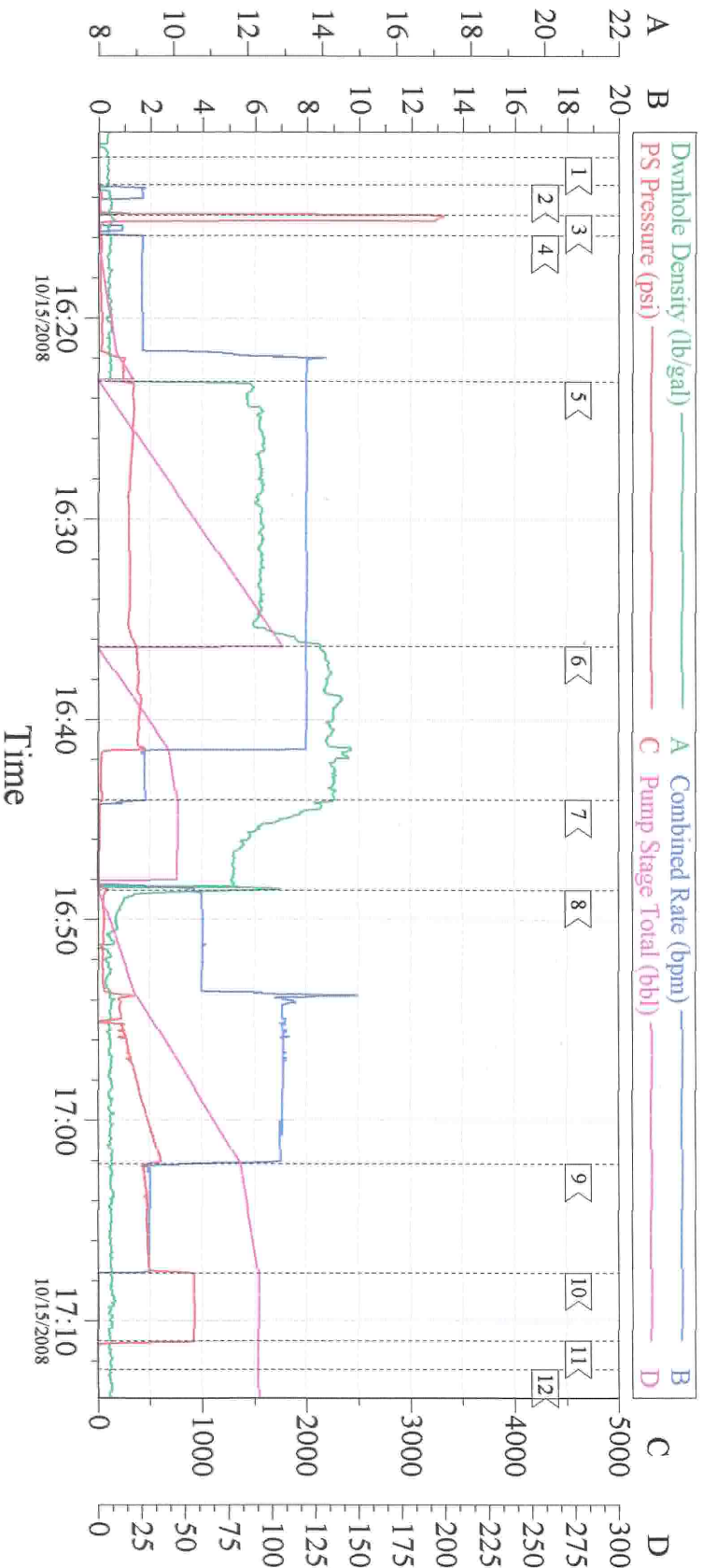
Cementing Job Log

Activity Description	Date/Time	Cht #	Rate bbl/min	Volume bbl		Pressure psig		Comments
				Stage	Total	Tubing	Casing	
Start Job	10/15/2008 16:14							AT 0930 WE STARTED JOB. TESTED LINES, PUMPED H2O SPACER, PUMPED ALL THE LEAD CEMENT, GOT INTO TAIL CEMENT, AND THE JIMMY MOTOR THAT POWERS ALL HYDRAULICS AND THE MIX PUMP DIED.
Test Lines	10/15/2008 16:15						3000.0	TRIED TO RESTART THE ENGINE, WHEN IT WAS CHECKED, WE FOUND THAT IT HAD SIEZED UP AND WOULD NOT RESTART. IMMEDIATELY SWAPPED TO RIG TO CRCULATE ALL SPACER AND CEMENT OUT OF THE WELL. ANOTHER PUMP TRUCK AND MORE CEMENT WAS ORDERED AND SENT ASAP.
Pump Spacer 1	10/15/2008 16:16		8	20			236.0	FRESH WATER. ALL CEMENT WAS CIRCULATED OUT TO WASTE PIT ON LOCATION.
Pump Lead Cement	10/15/2008 16:23		8	107			300.0	240 SKS @ 12.3PPG, 2.38 YLD, 13.75 GAL/SK
Pump Tail Cement	10/15/2008 16:37		8	47			300.0	200 SKS @ 14.2PPG, 1..43 YLD, 6.88 GAL/SK
Shutdown	10/15/2008 16:44							
Drop Top Plug	10/15/2008 16:48							PLUG LAUNCHED
Pump Displacement	10/15/2008 16:48		7				1200.0	FRESH WATER
Bump Plug	10/15/2008 17:08		2	92			900.0	SLOW RATE 10 BBLS PRIOR TO REACHING CALCULATED DISPLACEMENT

Cementing Job Log

Activity Description	Date/Time	Cht #	Rate bbl/ min	Volume bbl		Pressure psig		Comments
				Stage	Total	Tubing	Casing	
Check Floats	10/15/2008 17:11							GOOD RETURNS DURING JOB. FLOAT HOLDING. 100BBLs OF LEAD CEMENT BACK TO SURFACE.
End Job	10/15/2008 17:12							THANK YOU, KERRY KING, JEREMY YOUNG AND CREW

8 5/8 SURFACE



Event Log

1 < START JOB	2 < TEST LINES	16:11:58	16:13:20
3 < PRIME LINES	4 < SPACER	16:14:52	16:15:52
5 < LEAD CEMENT	6 < TAIL CEMENT	16:23:09	16:36:22
7 < SHUT DOWN	8 < DROP PLUG, START DISPLACEMENT	16:44:01	16:48:32
9 < SLOW RATE	10 < BUMP PLUG	17:02:10	17:07:36
11 < CHECK FLOAT	12 < END JOB	17:11:00	17:12:25

Customer: PXP
 OPERATOR: JEREMY YOUNG
 PUMP TRUCK: ELITE 6

Job Date: 10-15-08
 CEMENTER: KERRY KING
 WELL # MCDANIEL 14-4B

Ticket #: 6240439
 ADC USED: YES
 CO REP: CURT CLAUSSEN