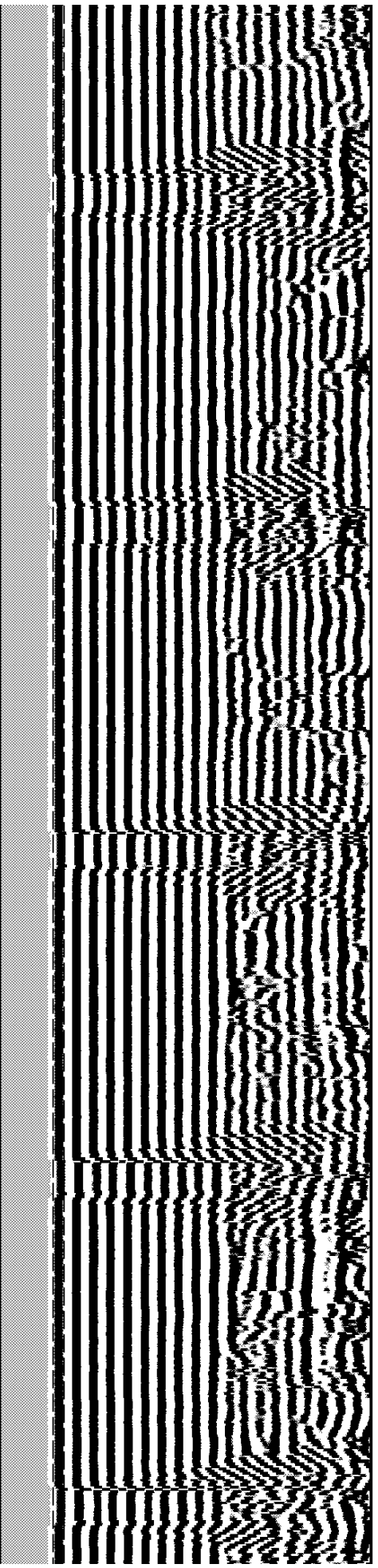
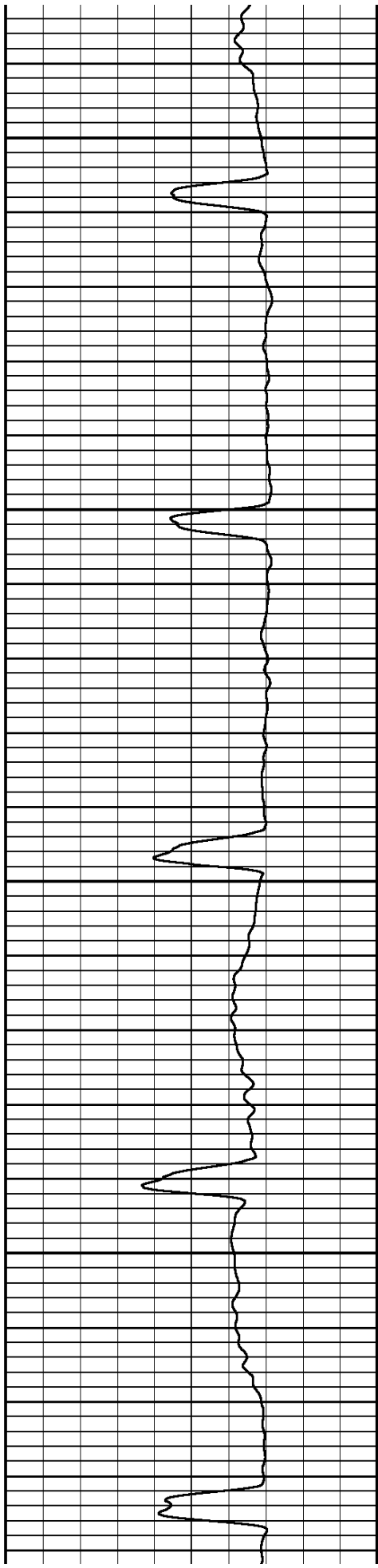
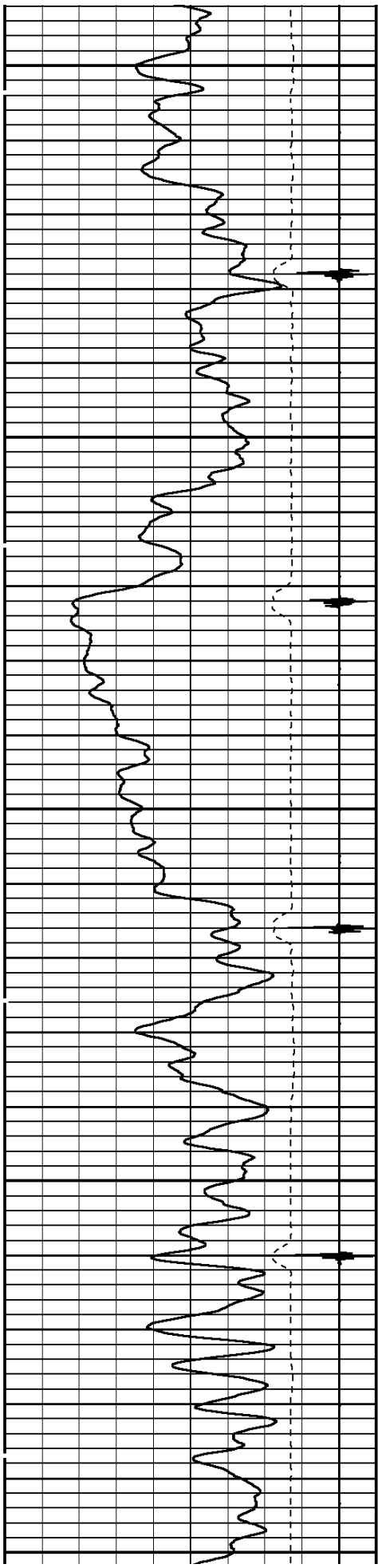


3400

3500

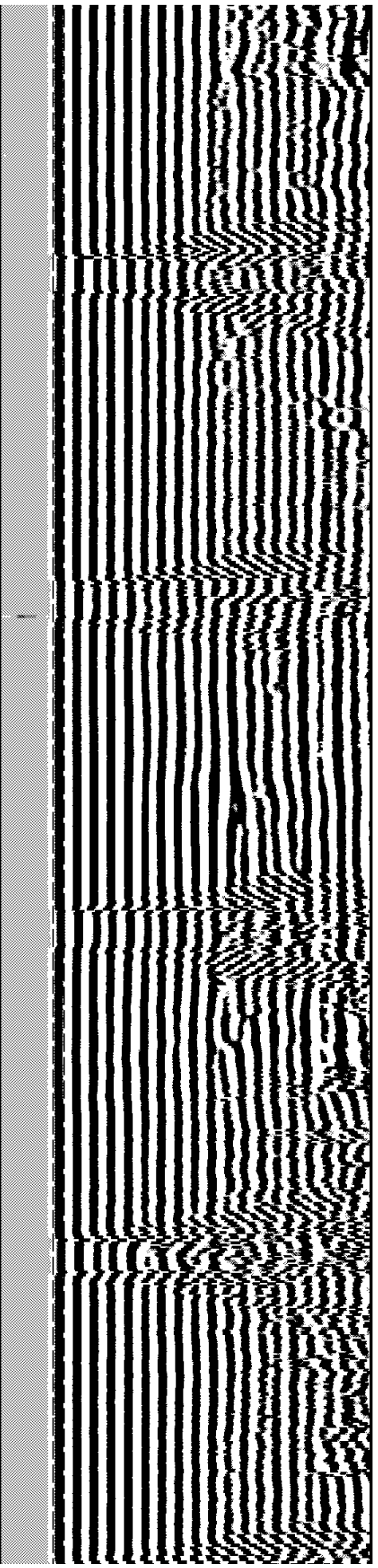
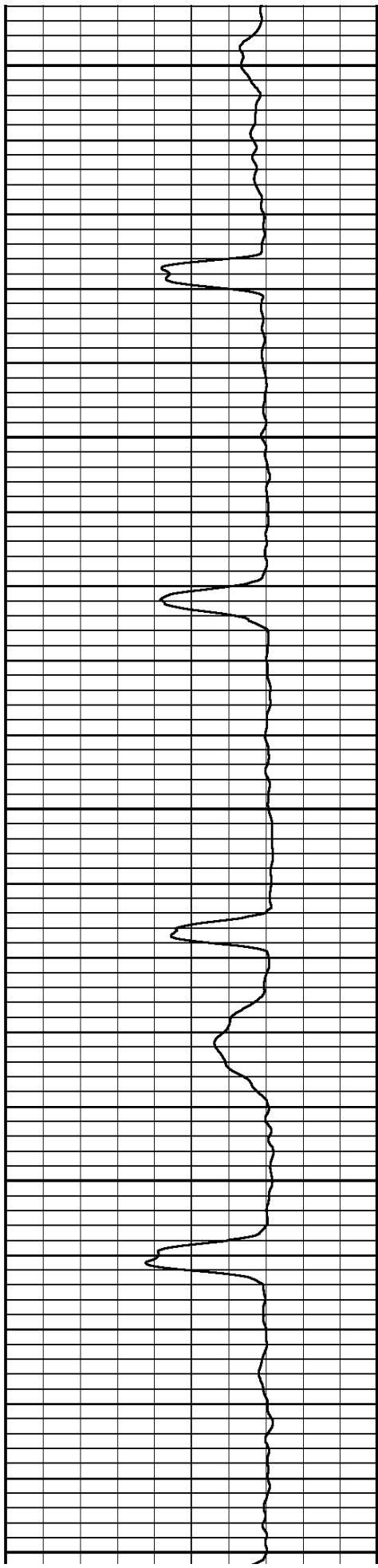


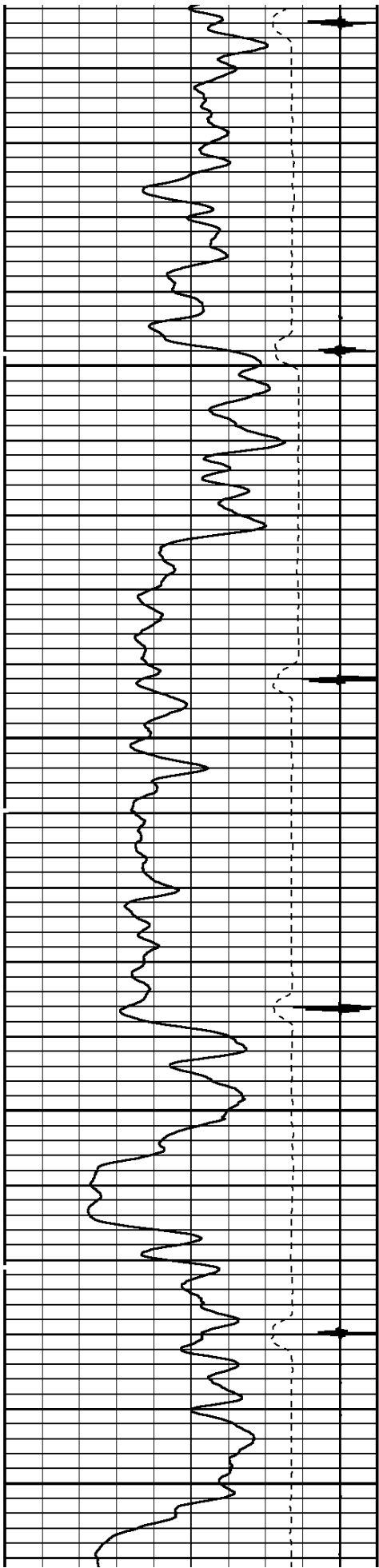


3600

3700

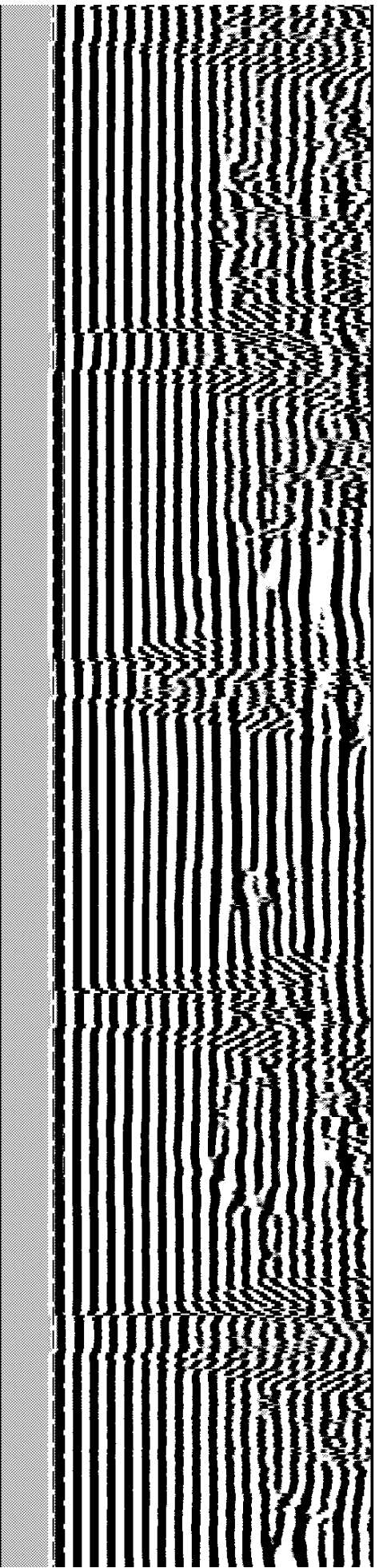
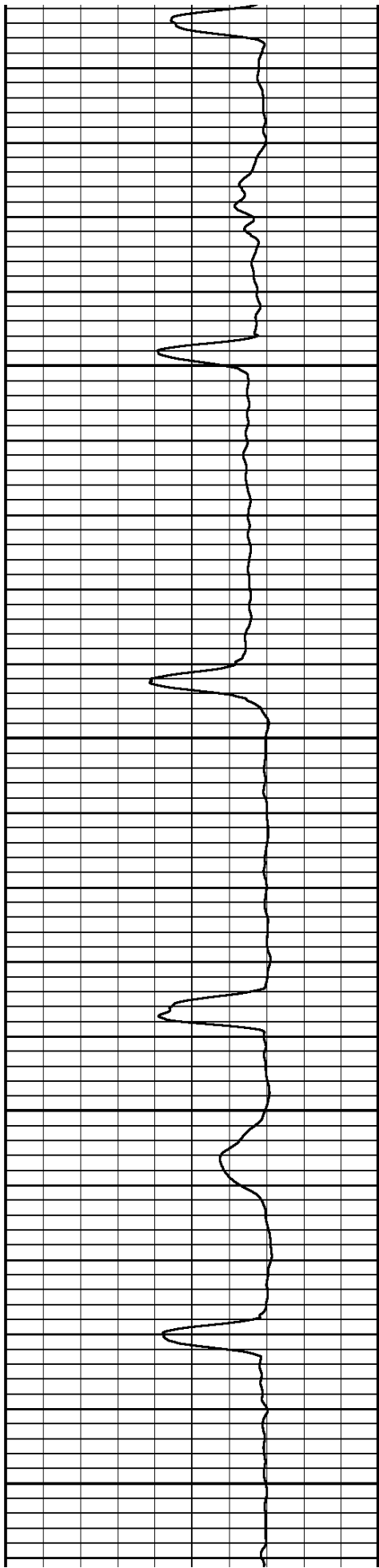
3800

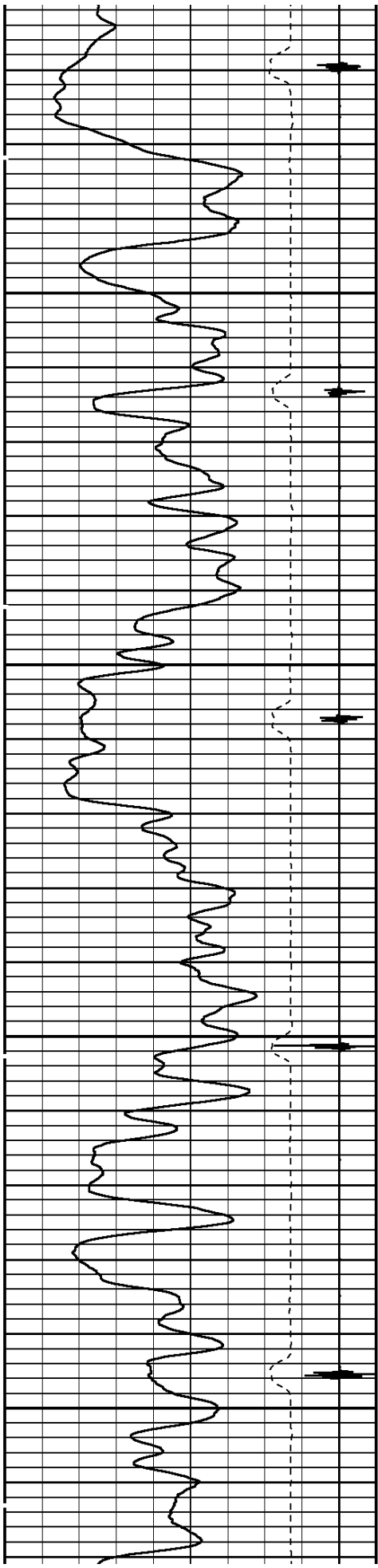




3900

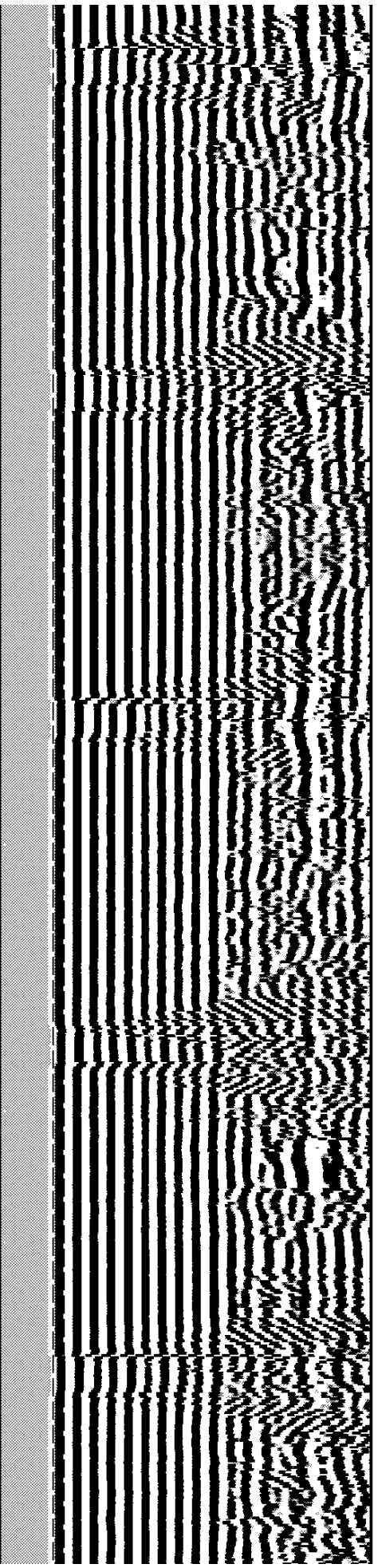
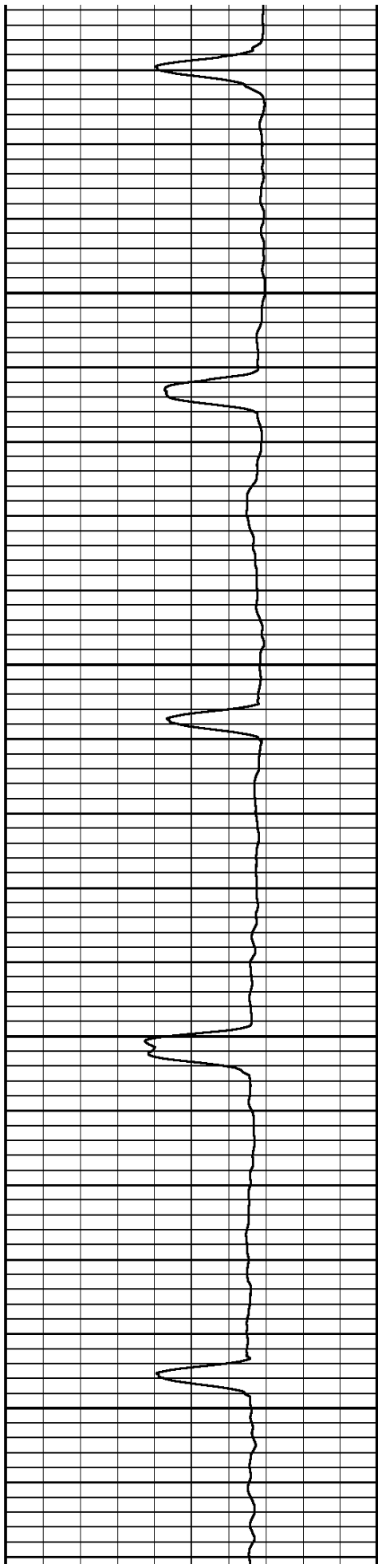
4000

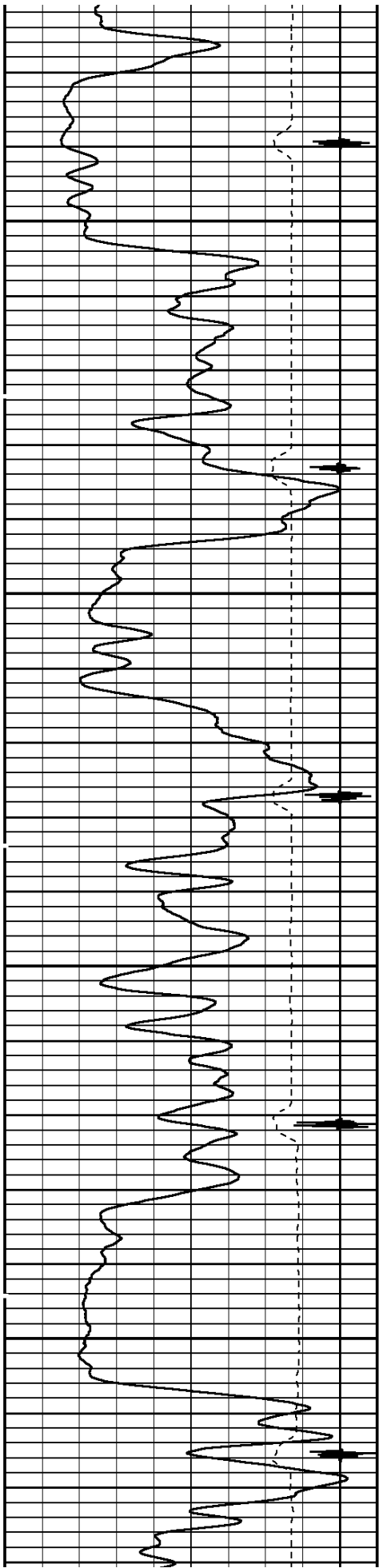




4100

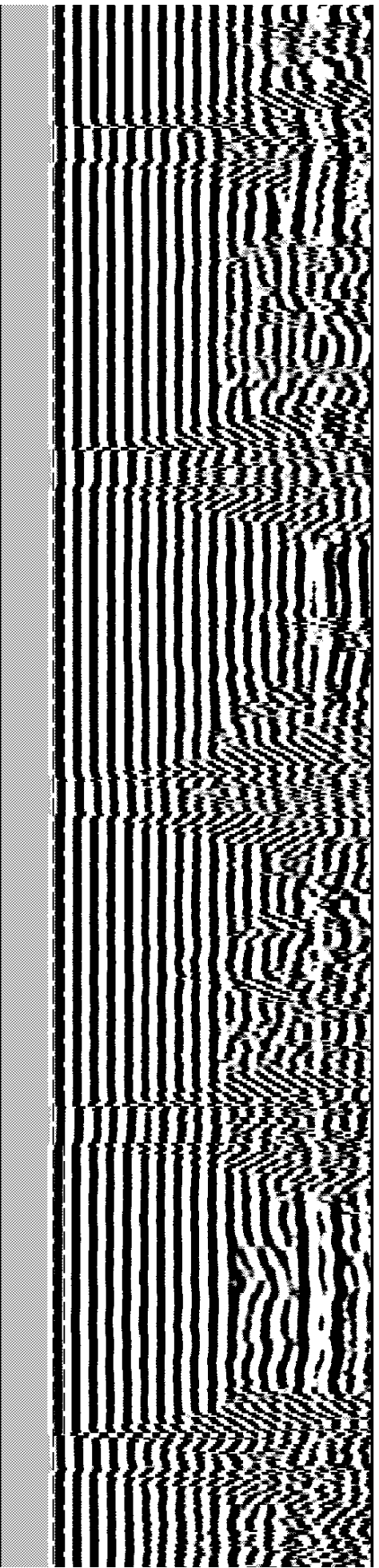
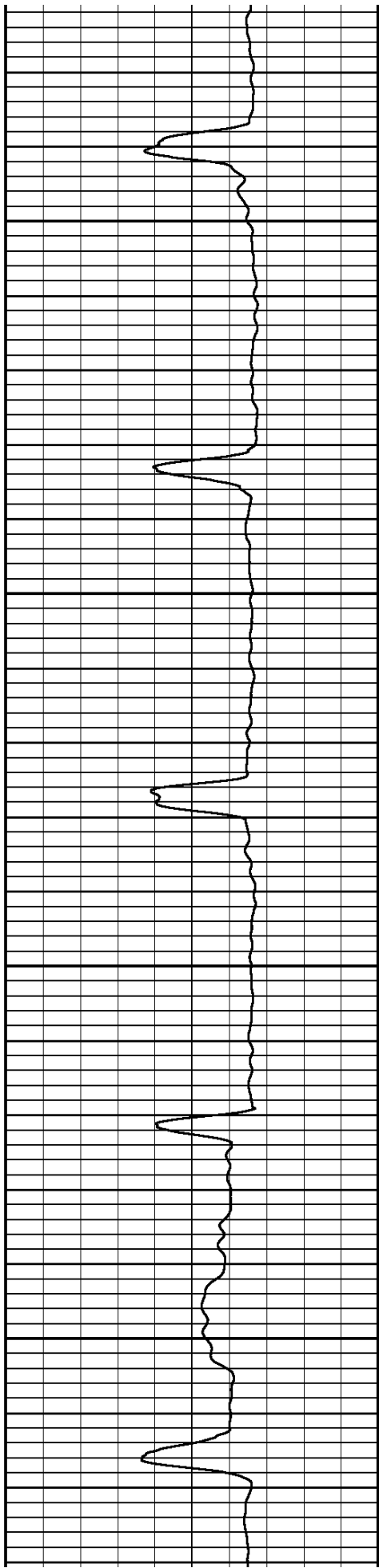
4200

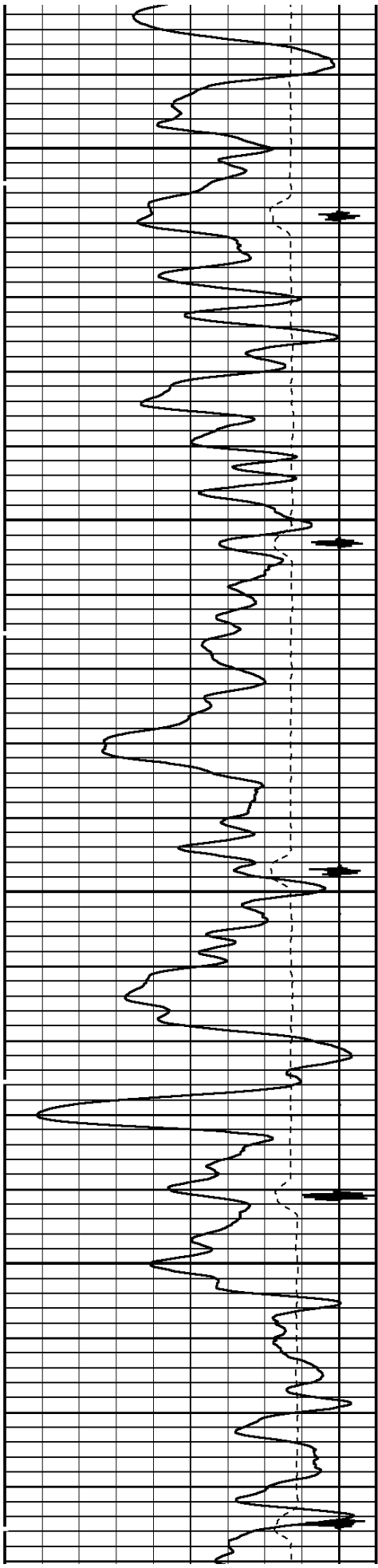




4300

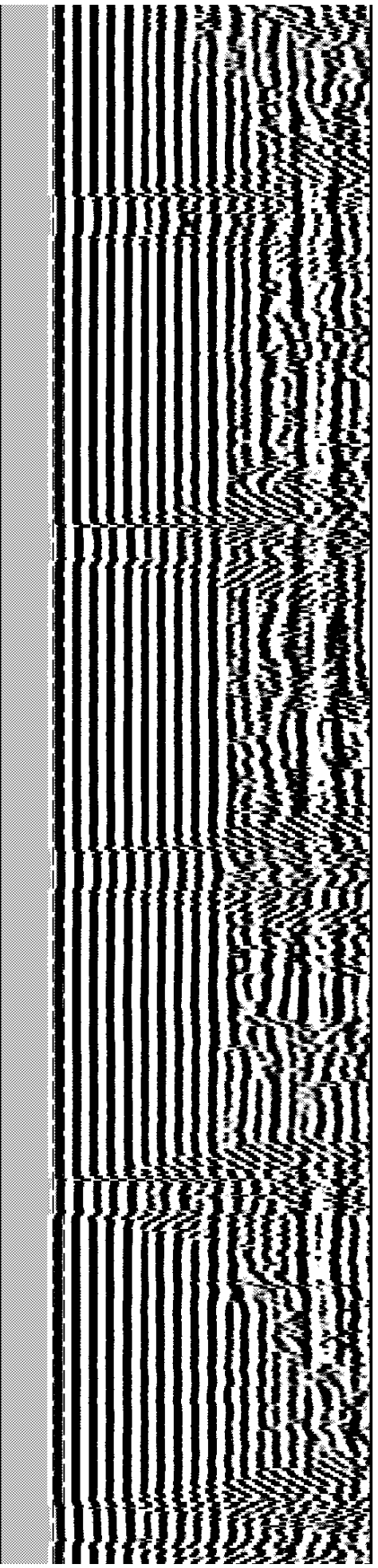
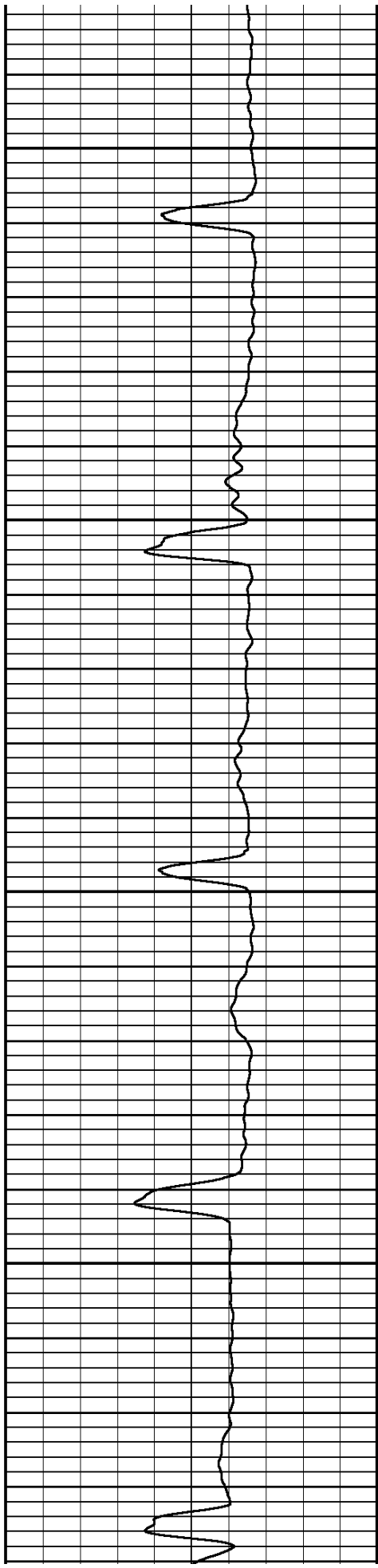
4400



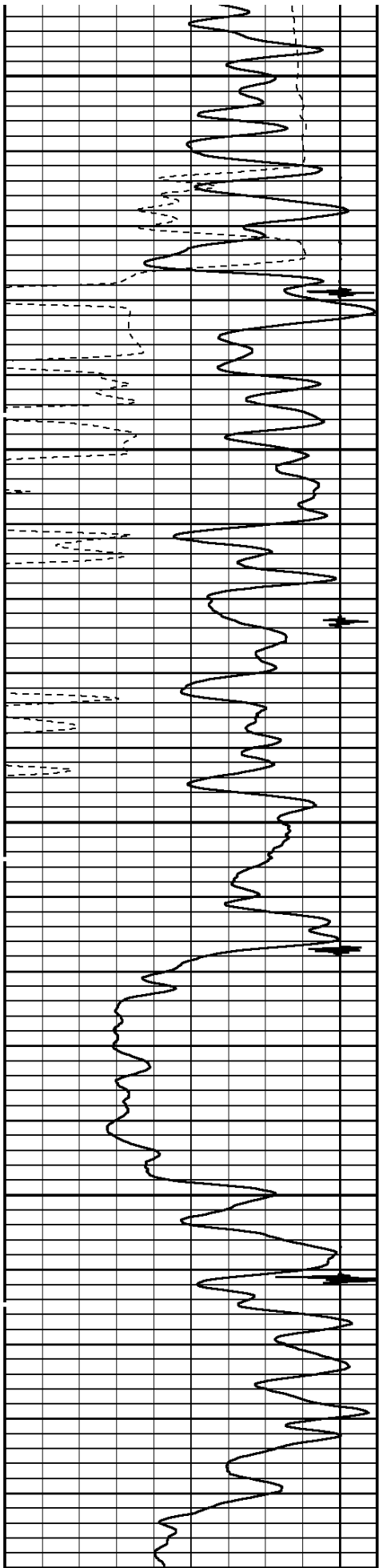


4500

4600

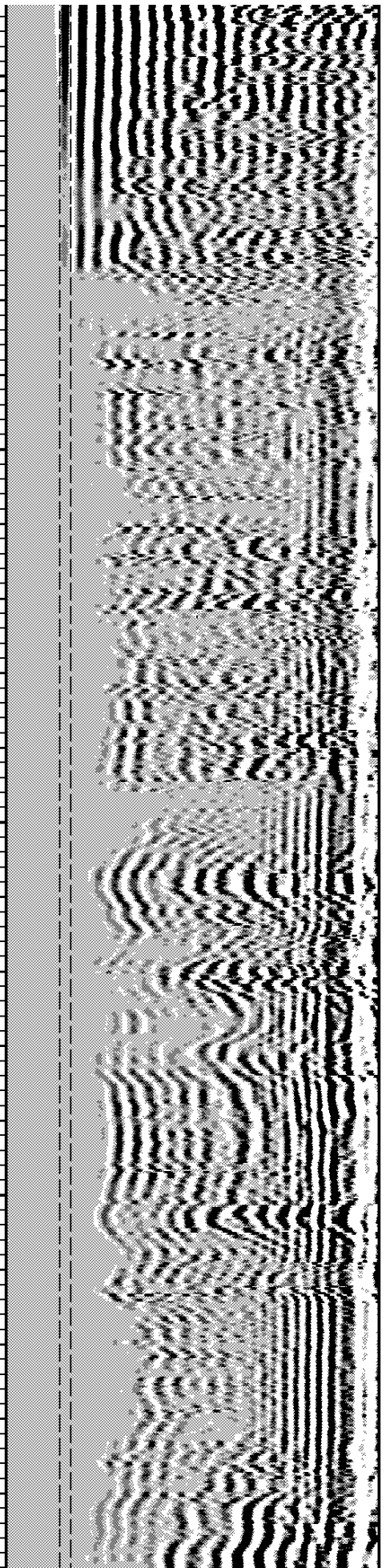
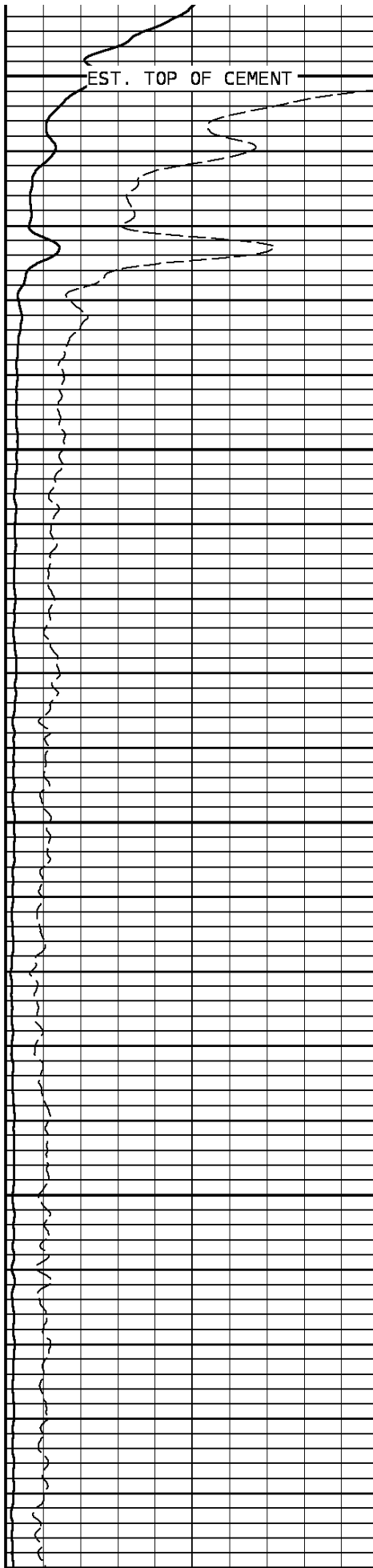


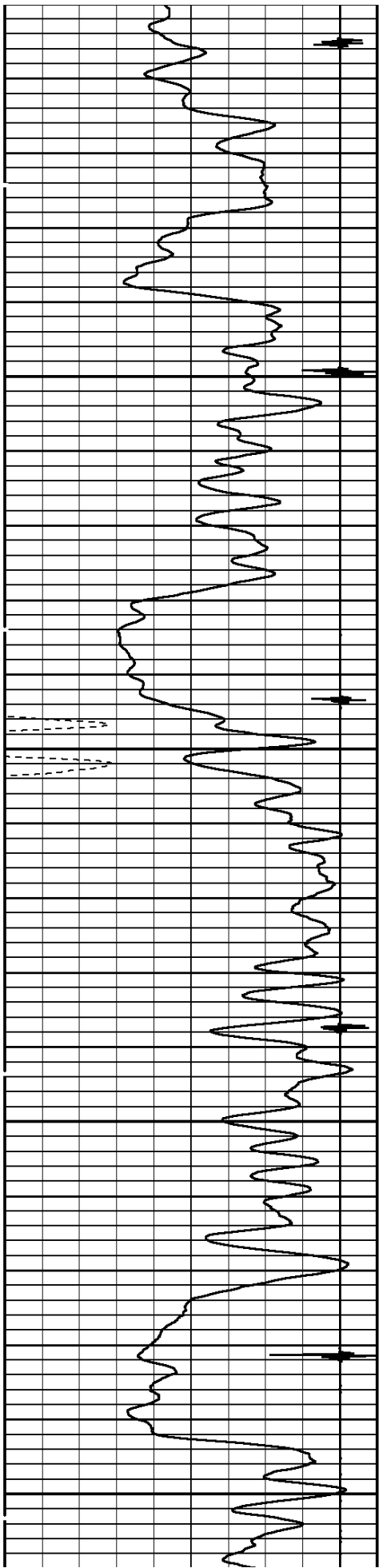




4700

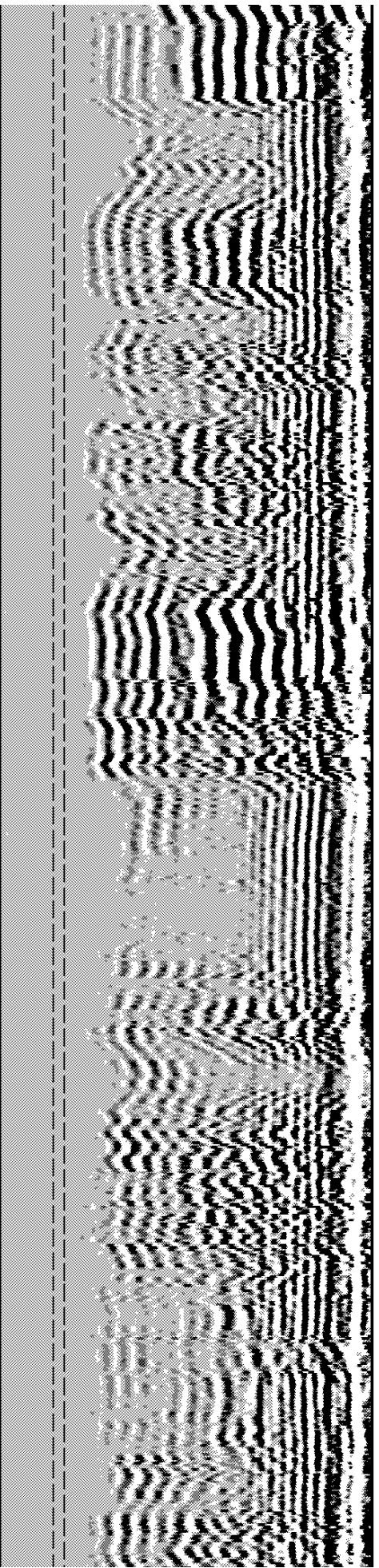
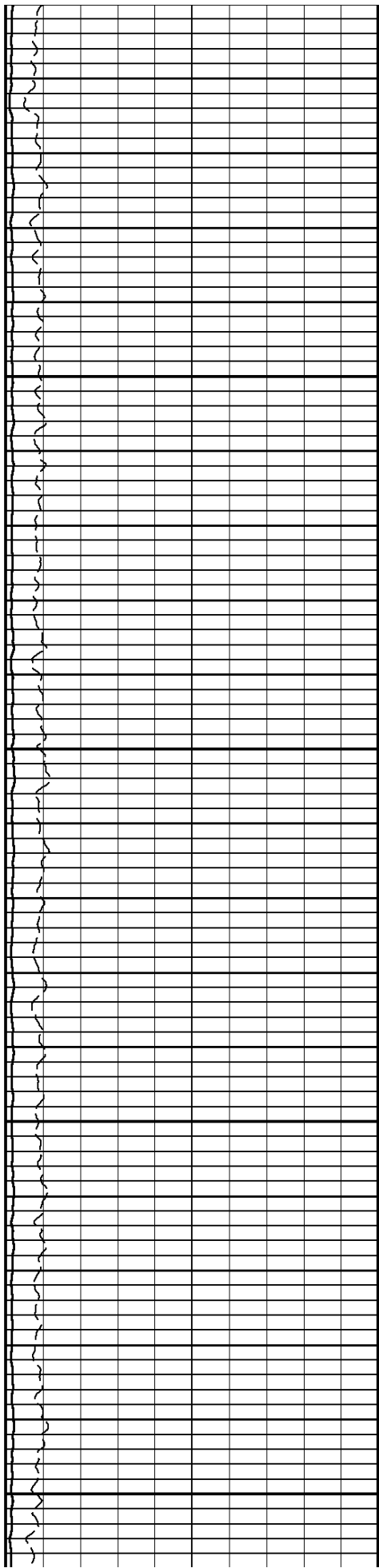
4800

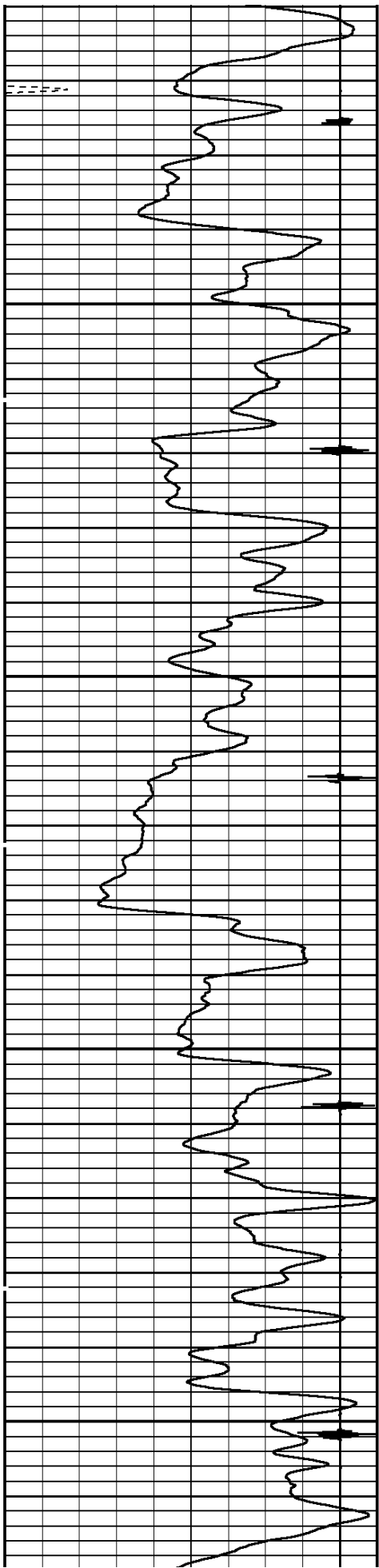




4900

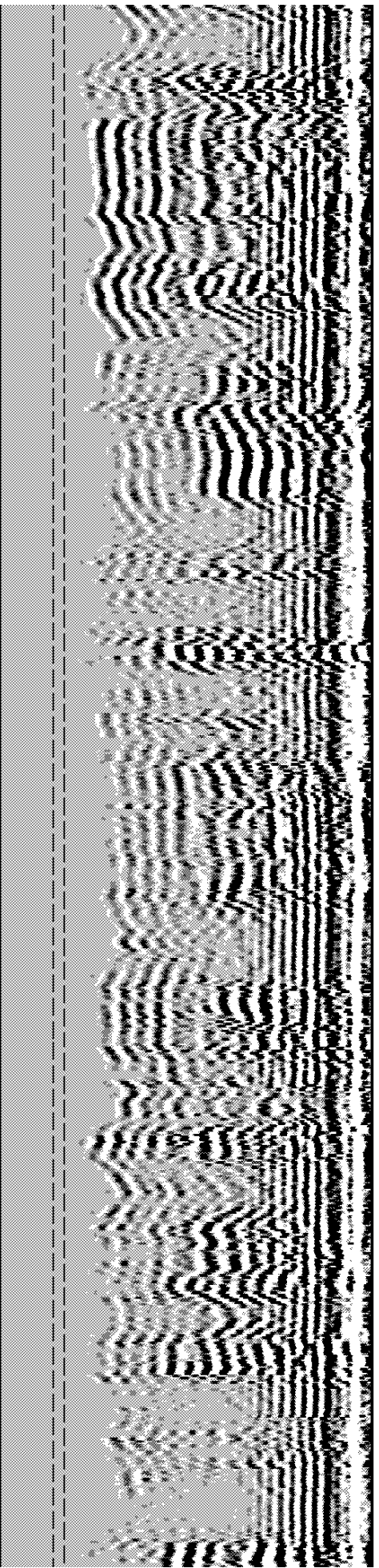
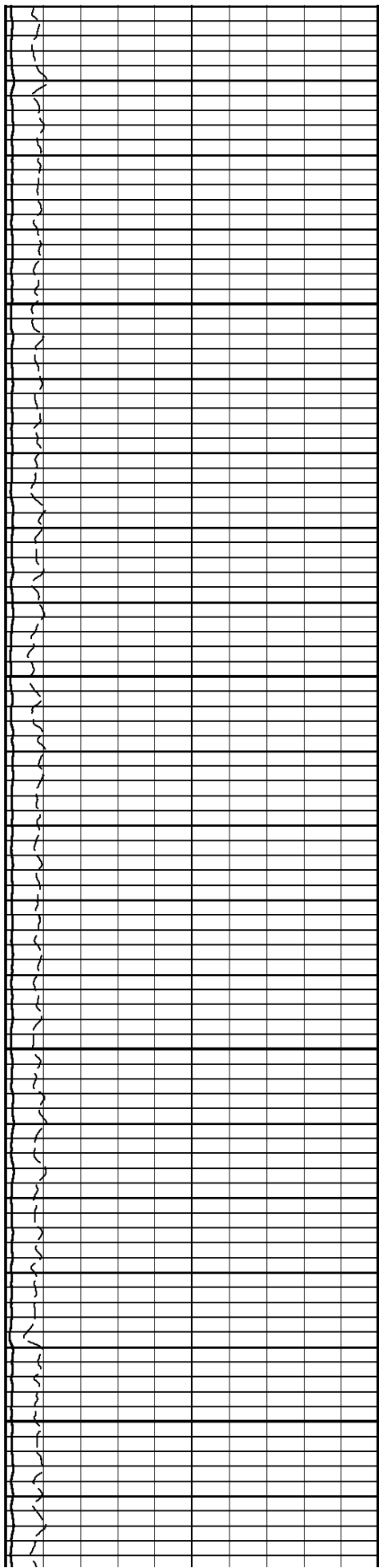
5000

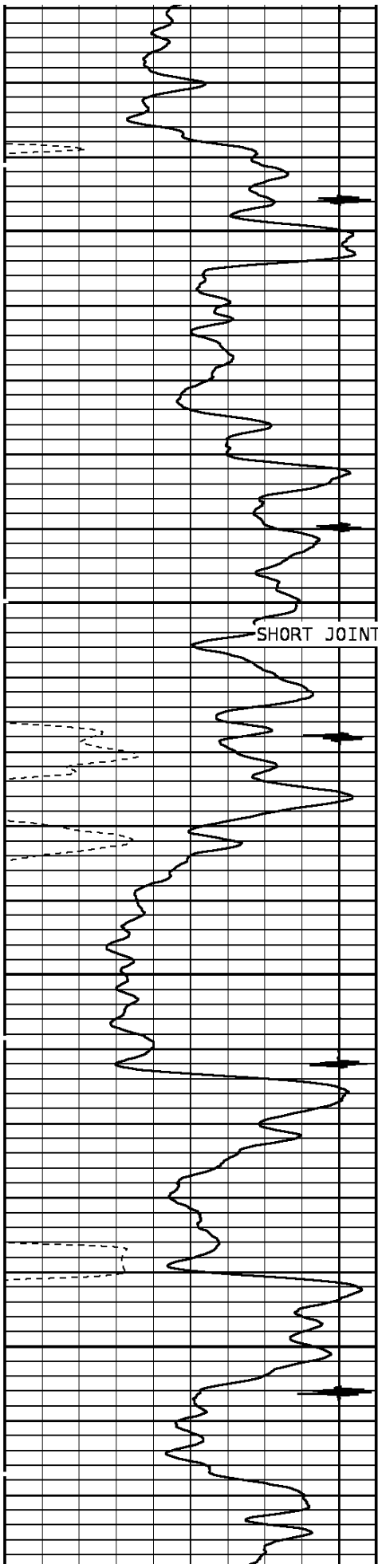




5100

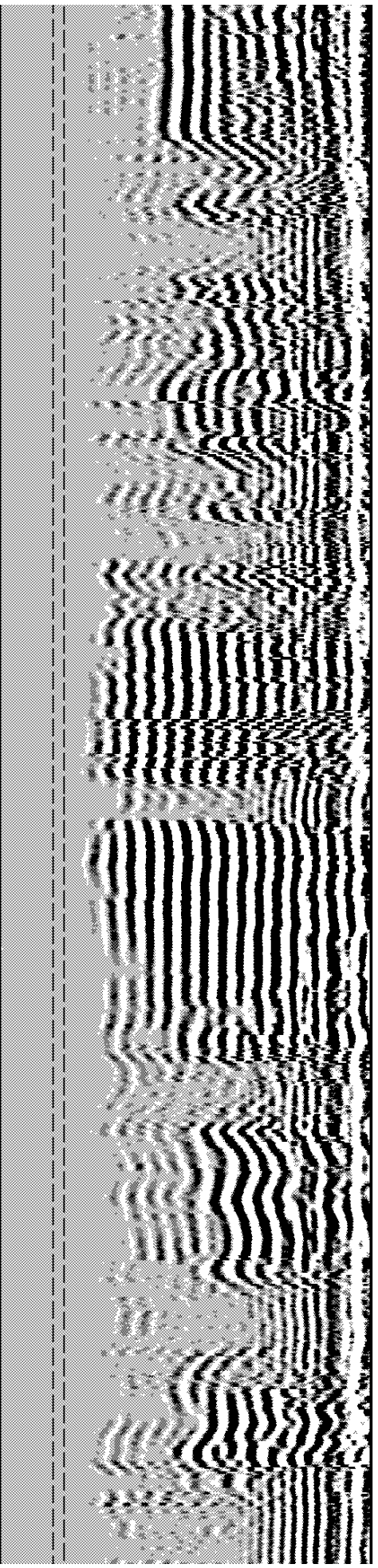
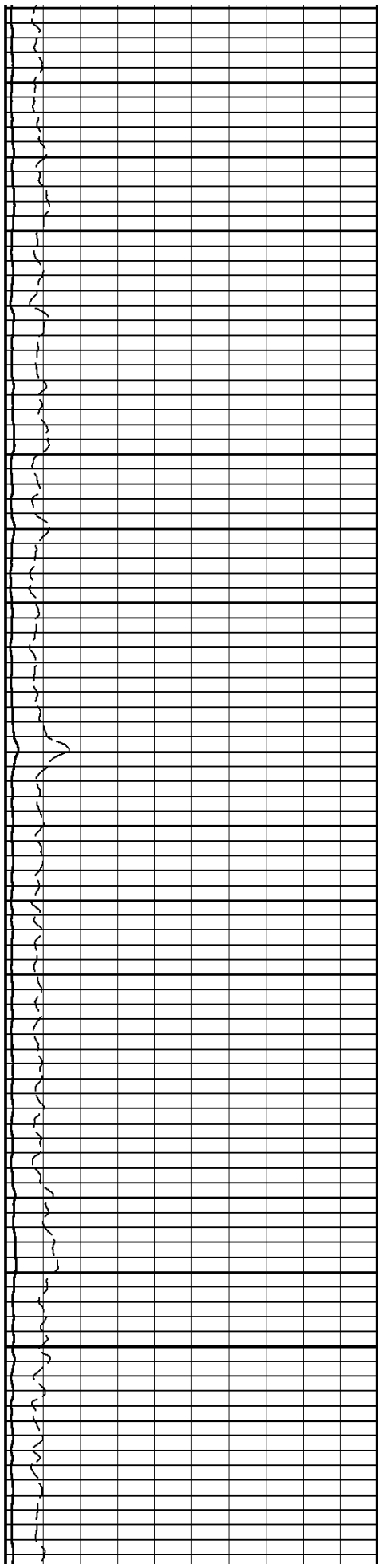
5200

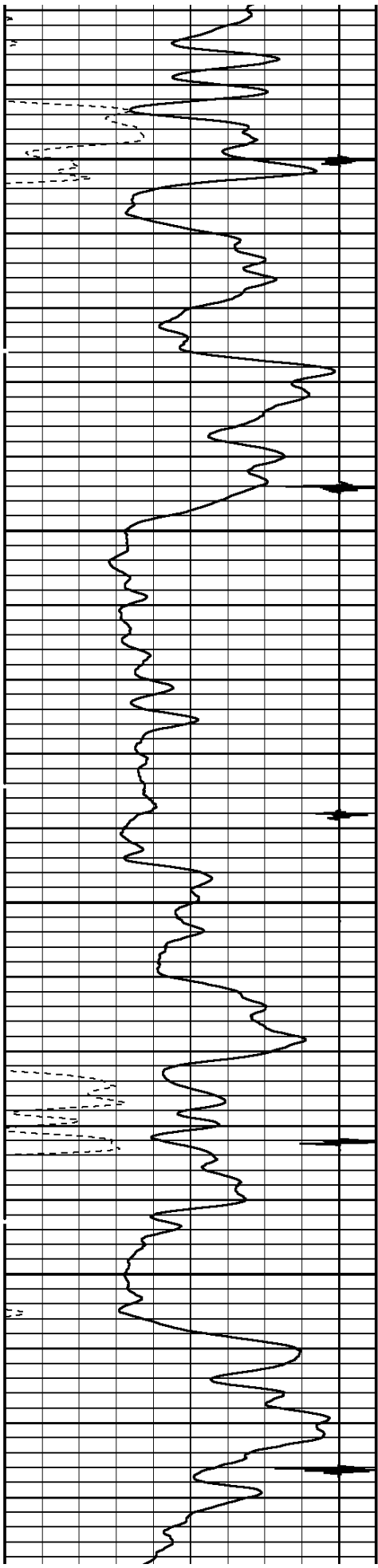




5300

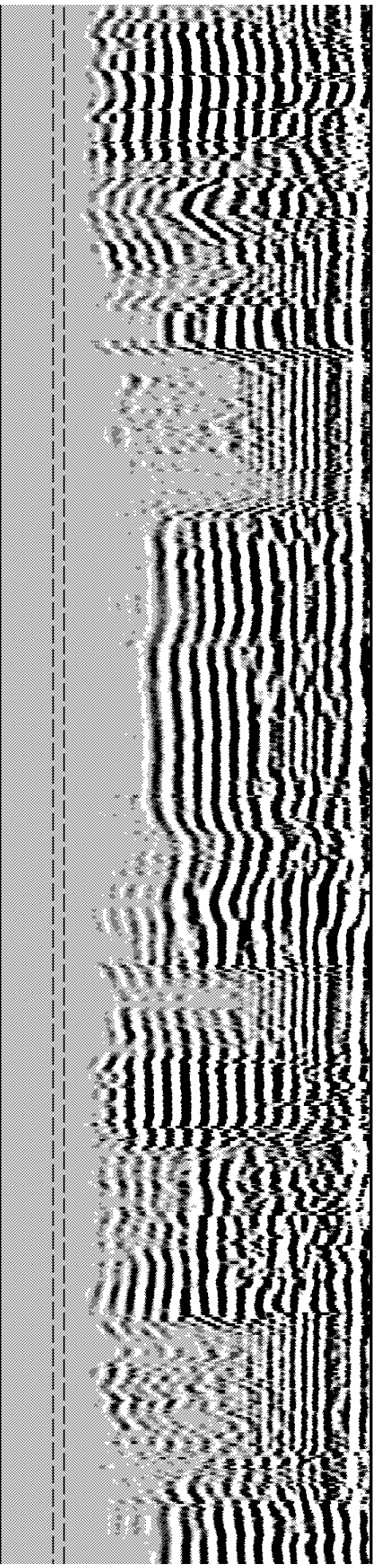
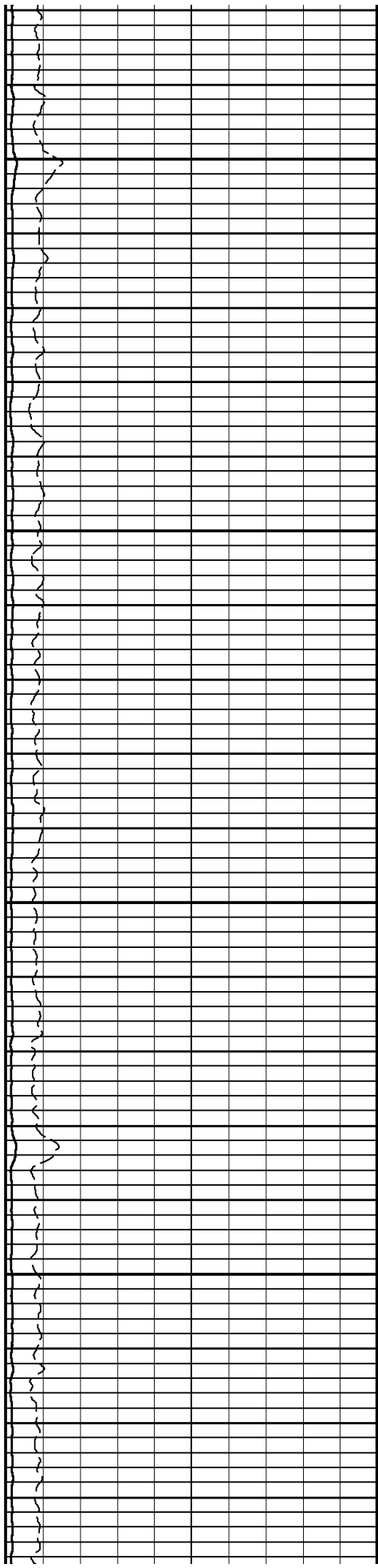
5400

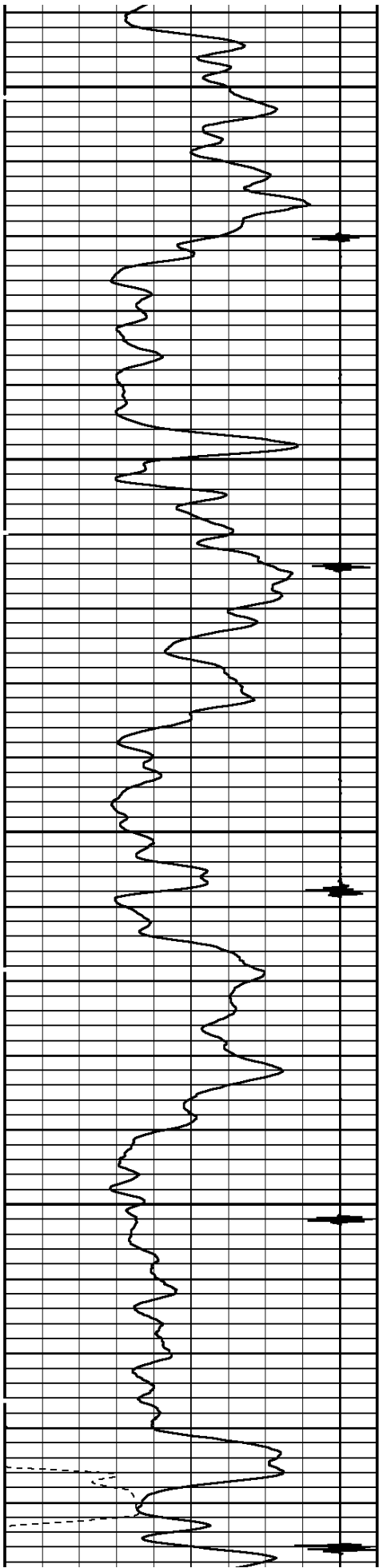




5500

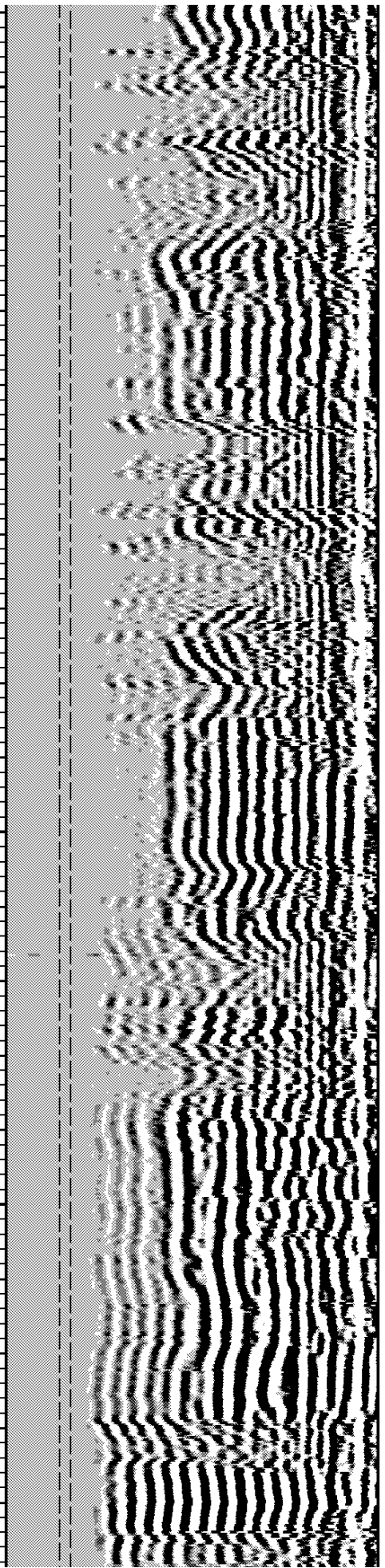
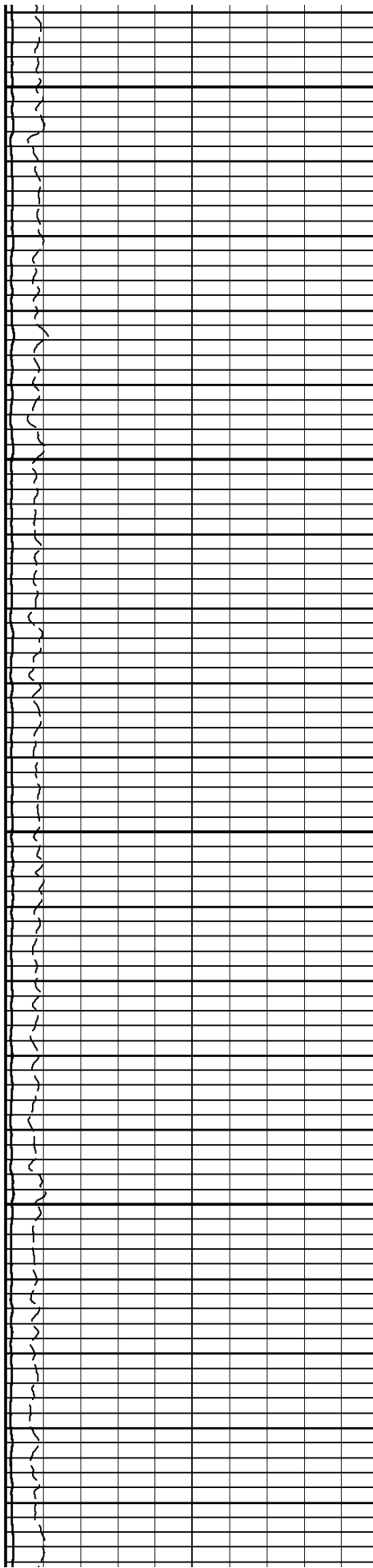
5600

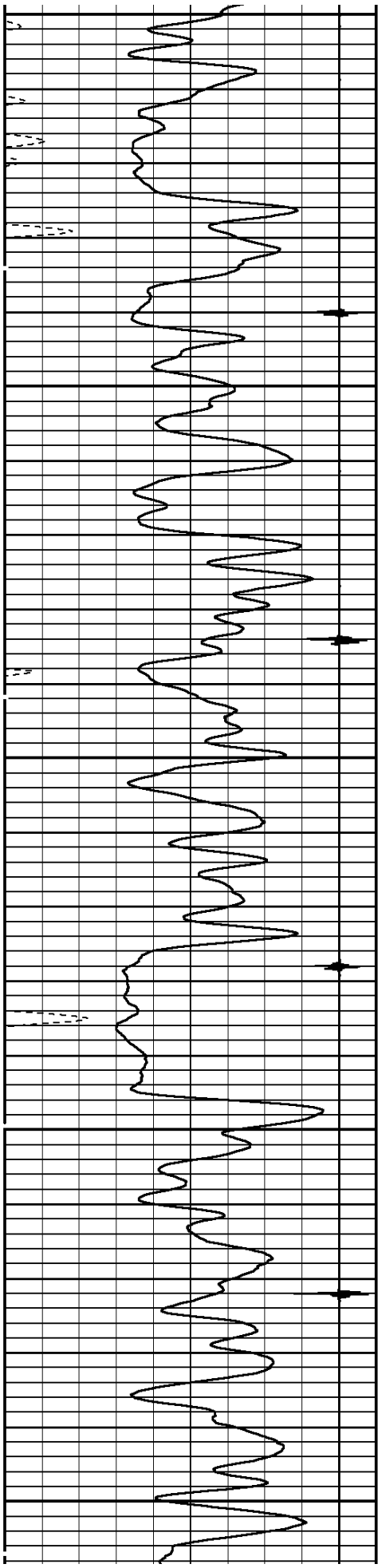




5700

5800

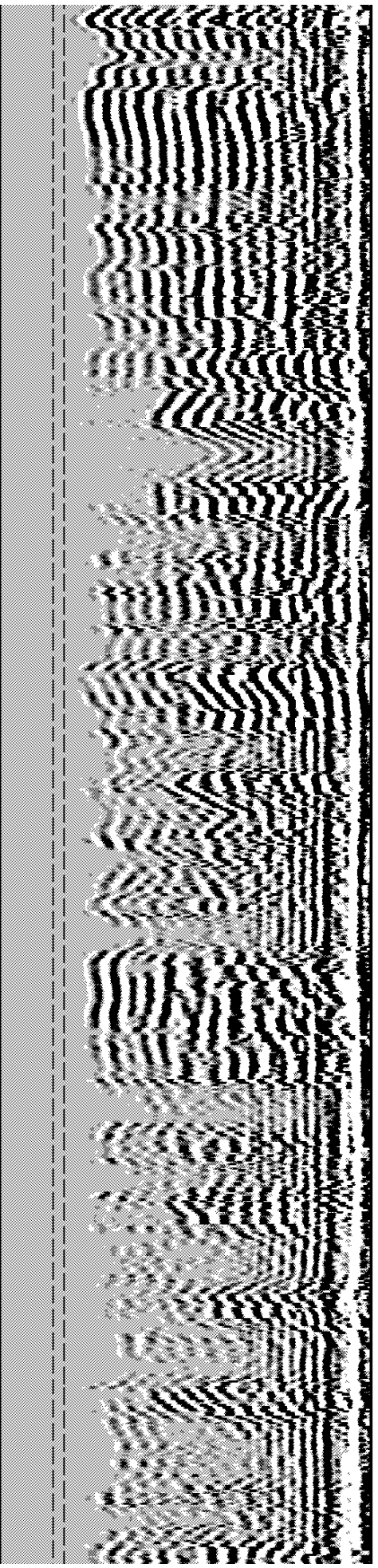
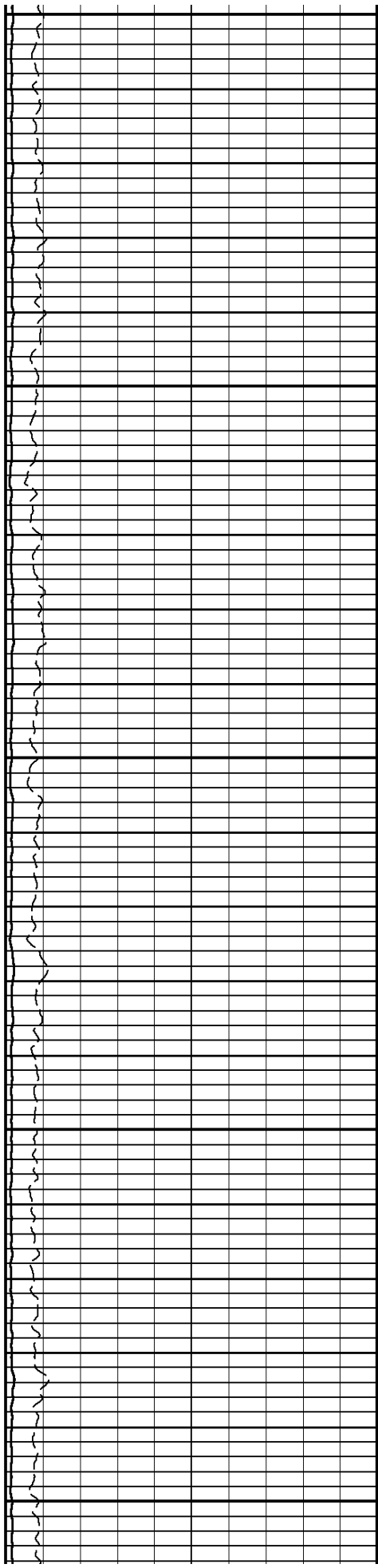


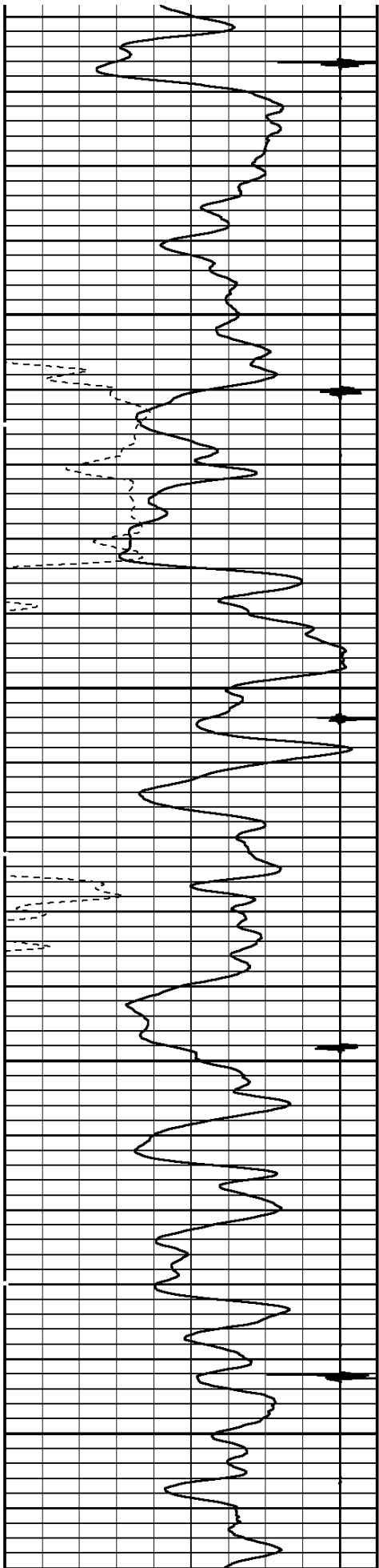


5900

6000

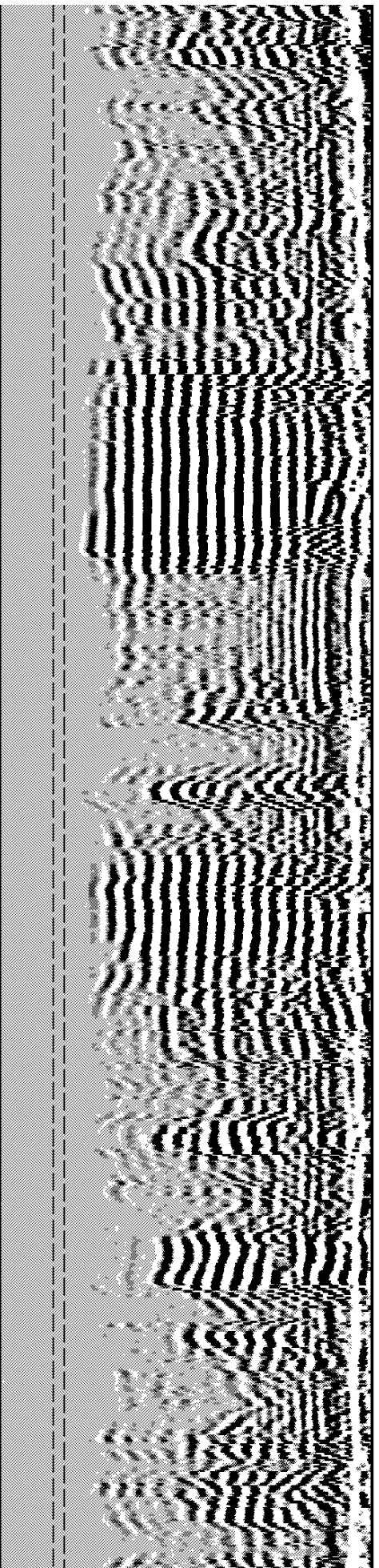
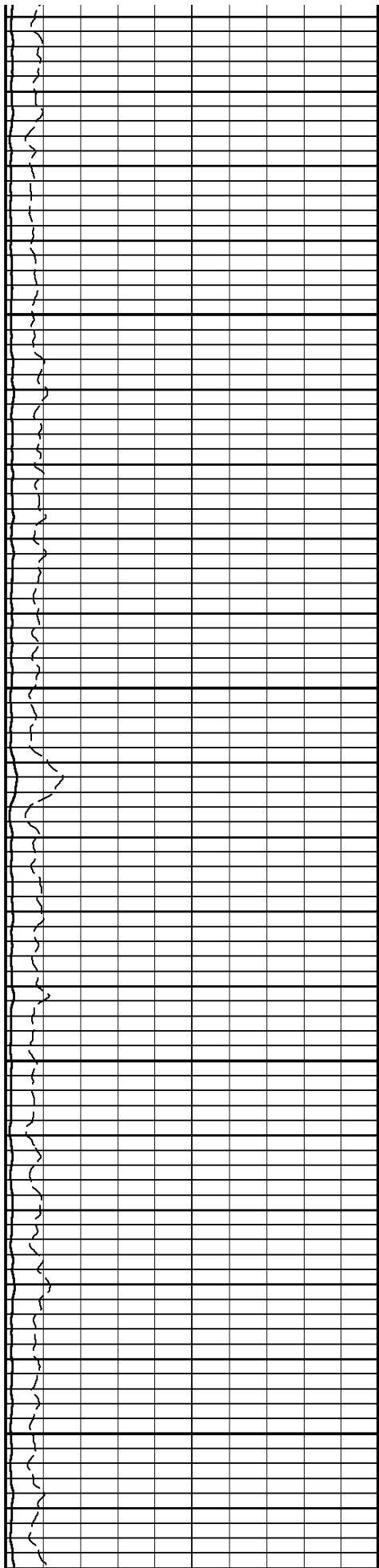
6100



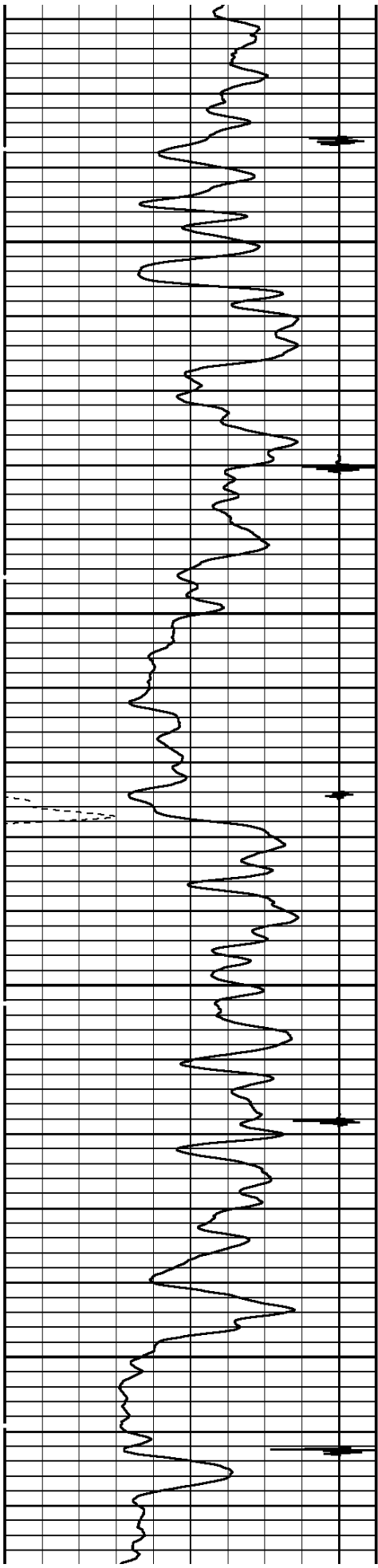


6200

6300

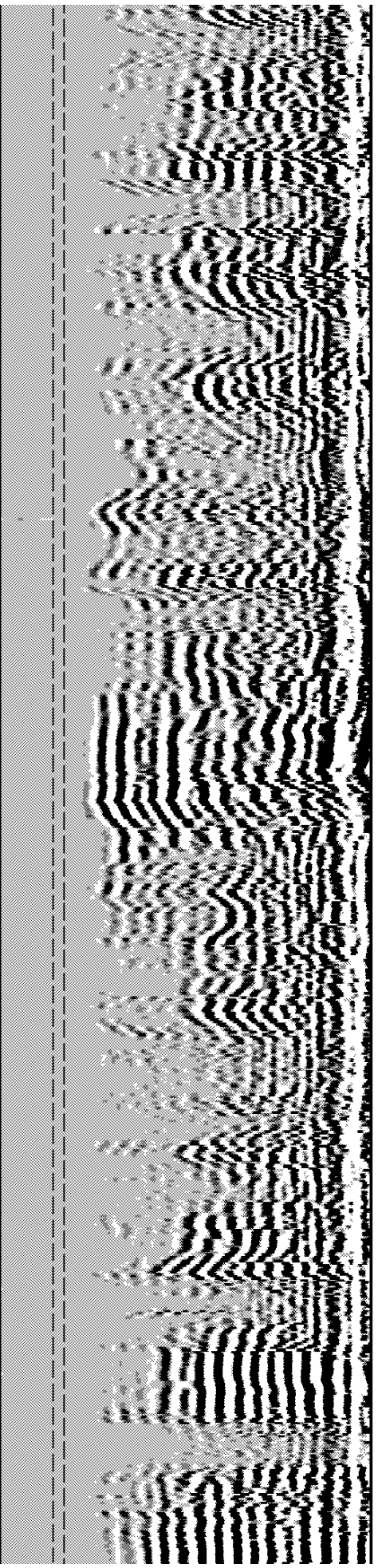
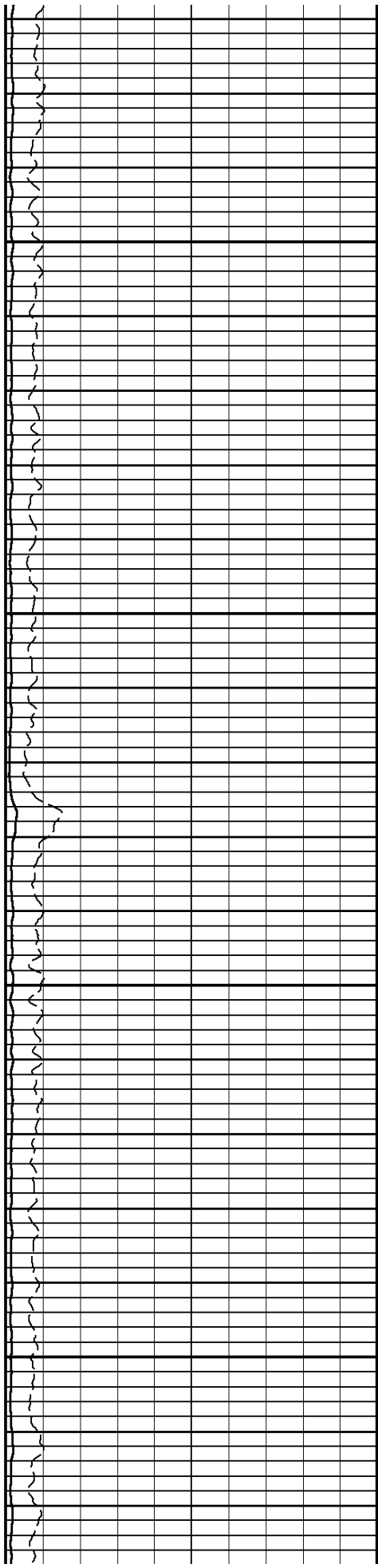


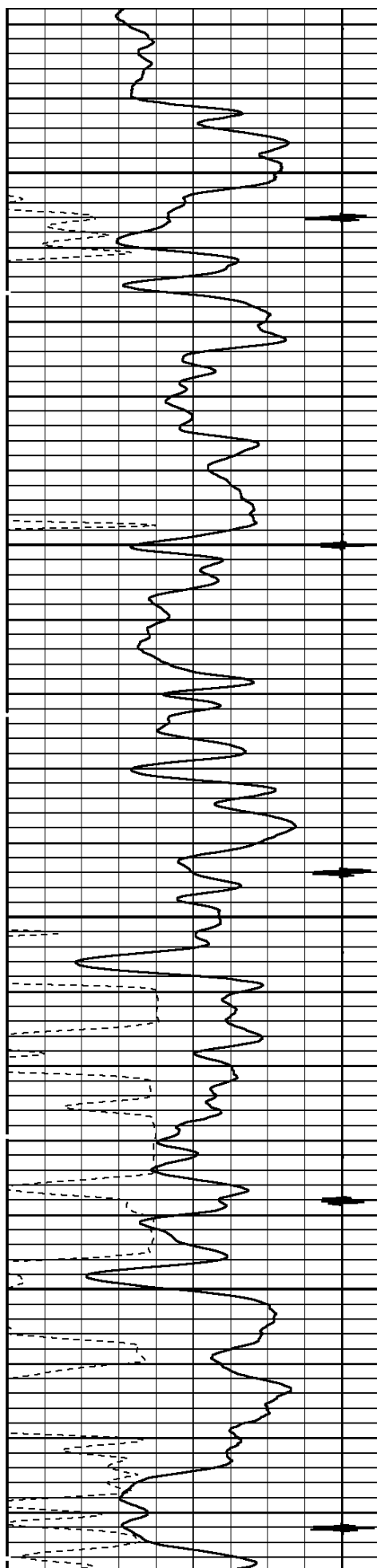




6400

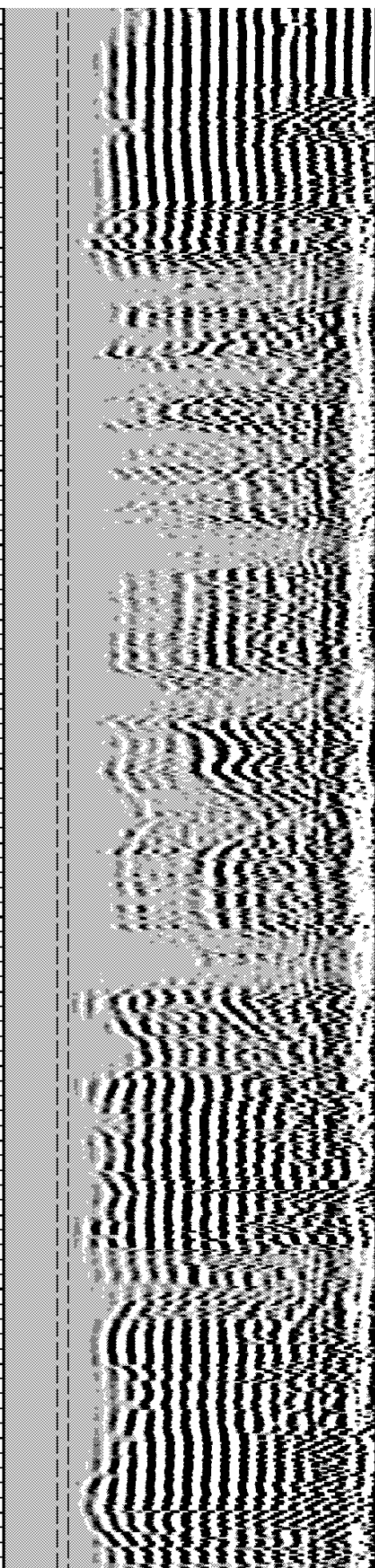
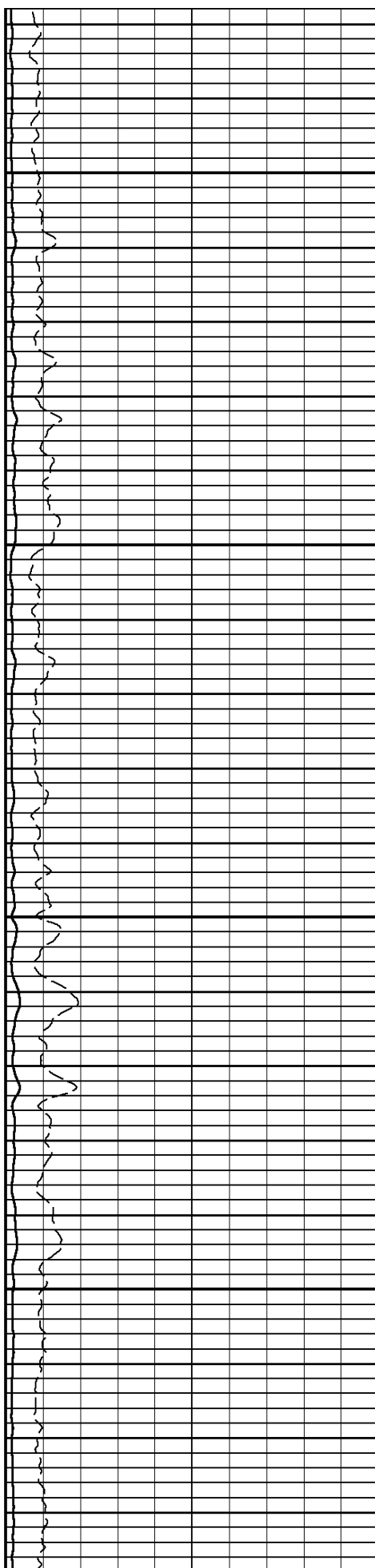
6500

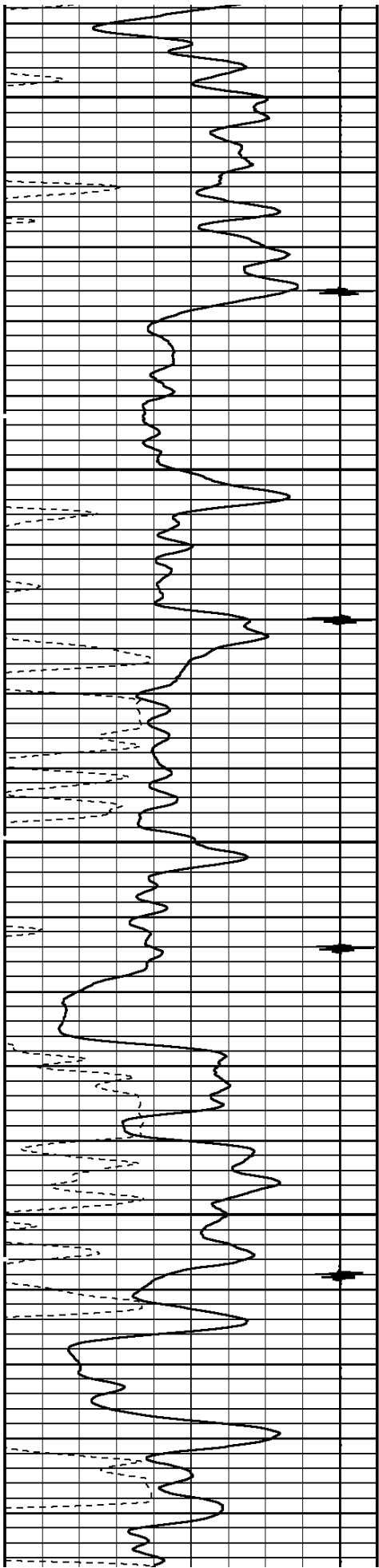




6600

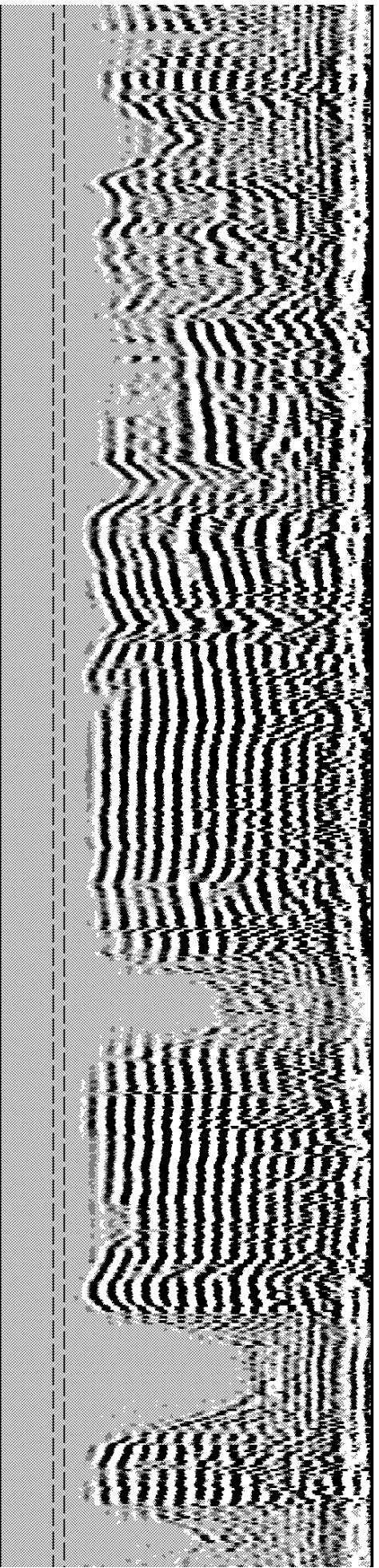
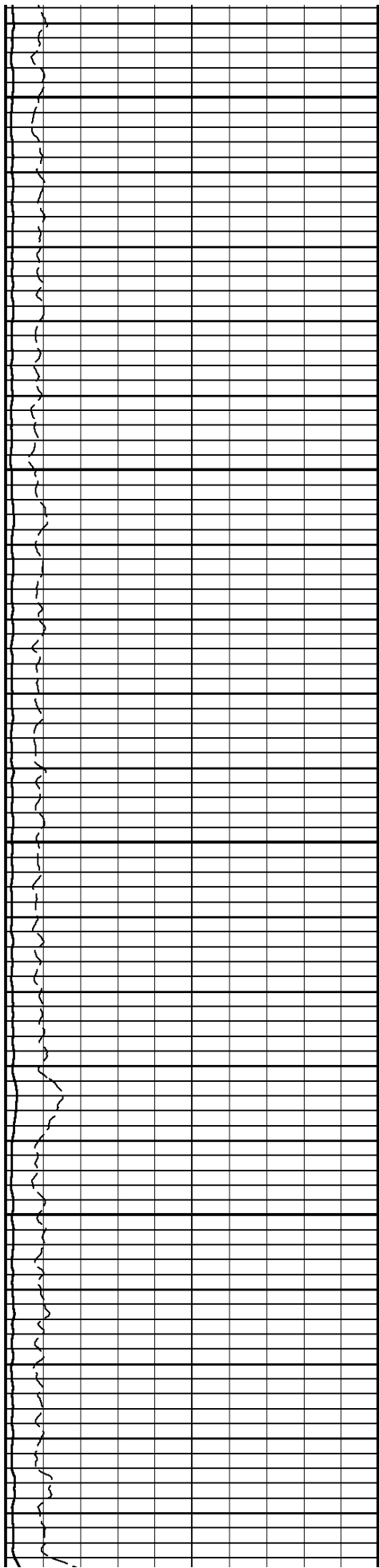
6700

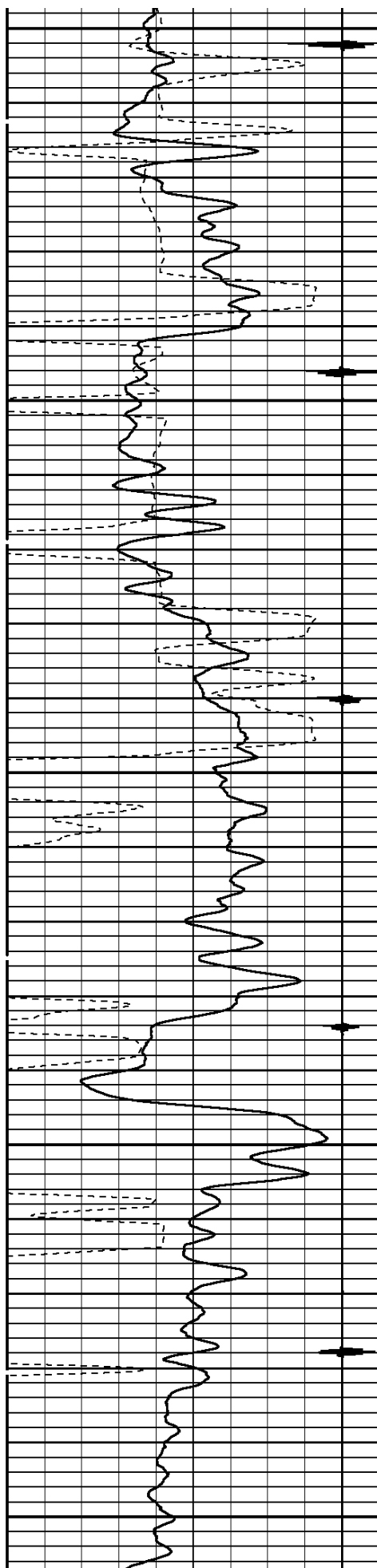




6800

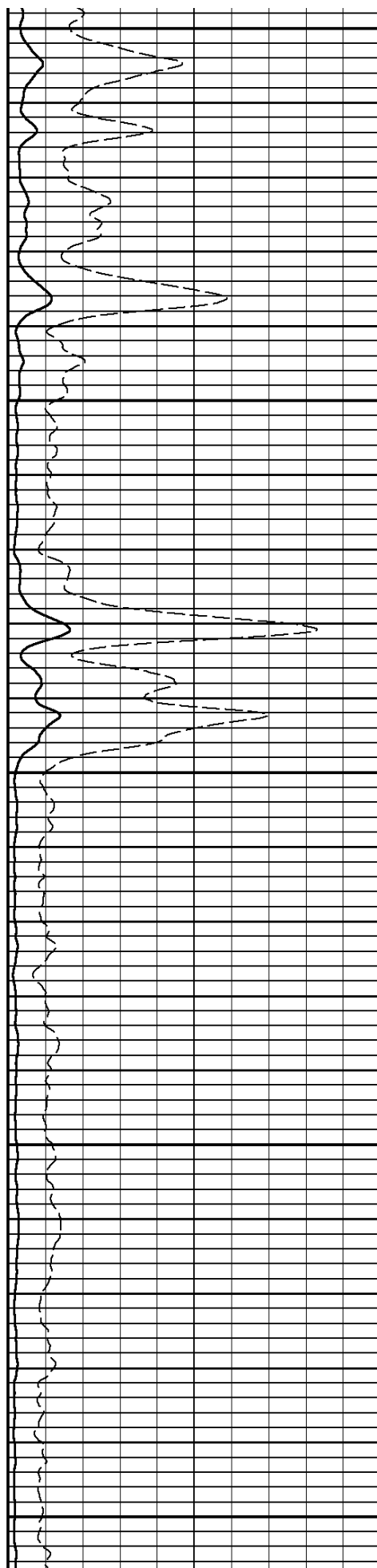
6900

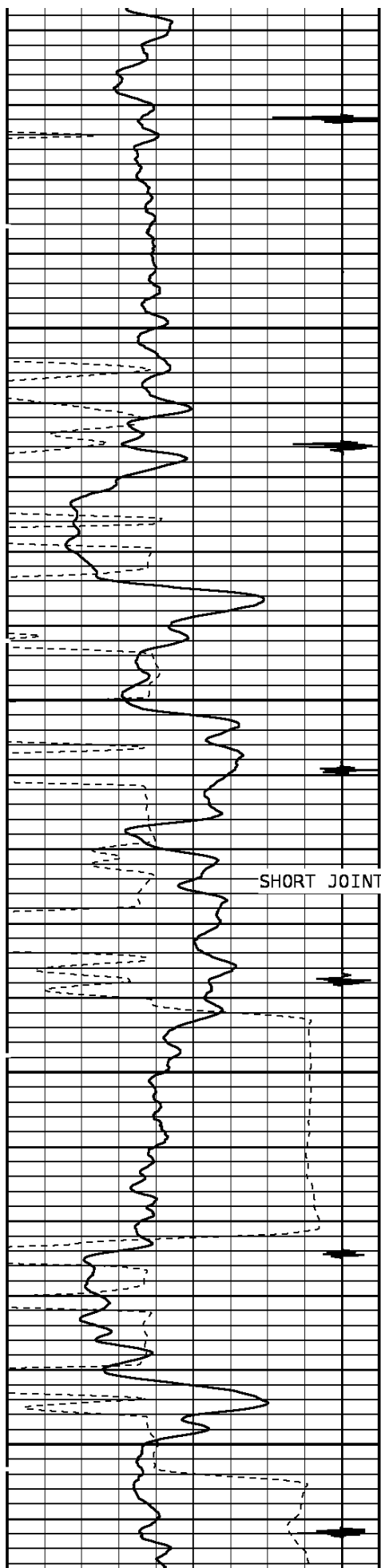




7000

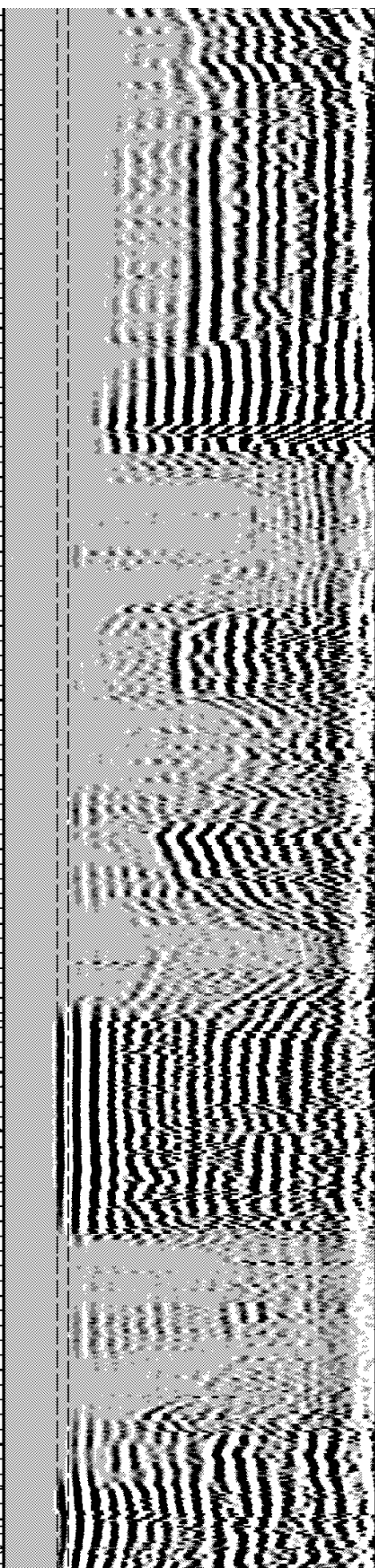
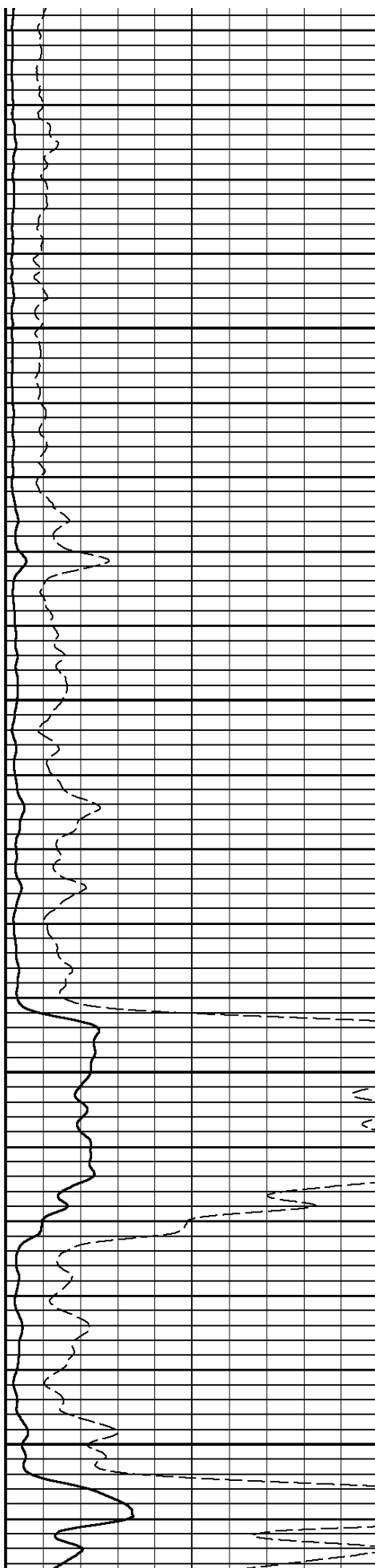
7100

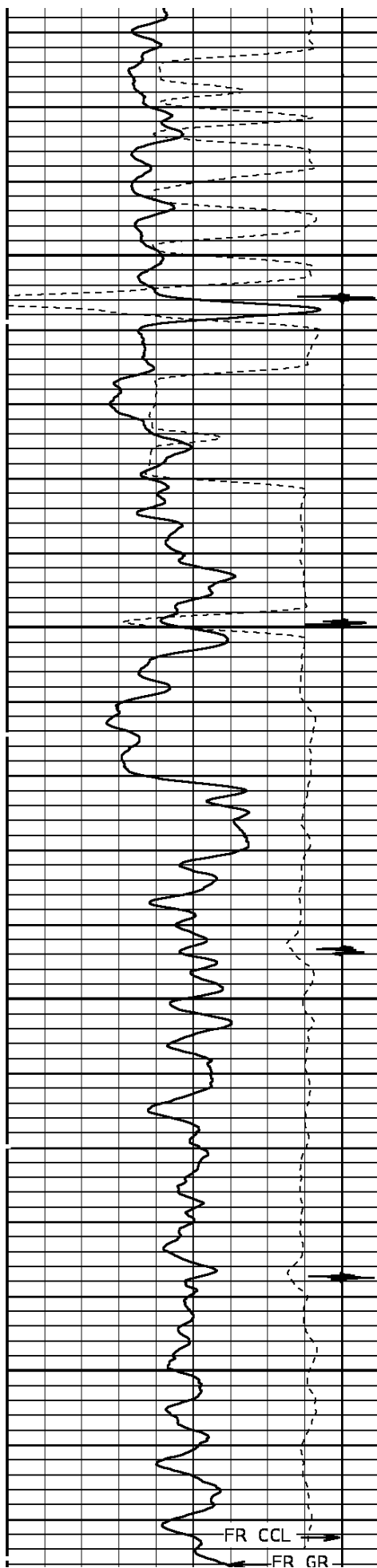




7200

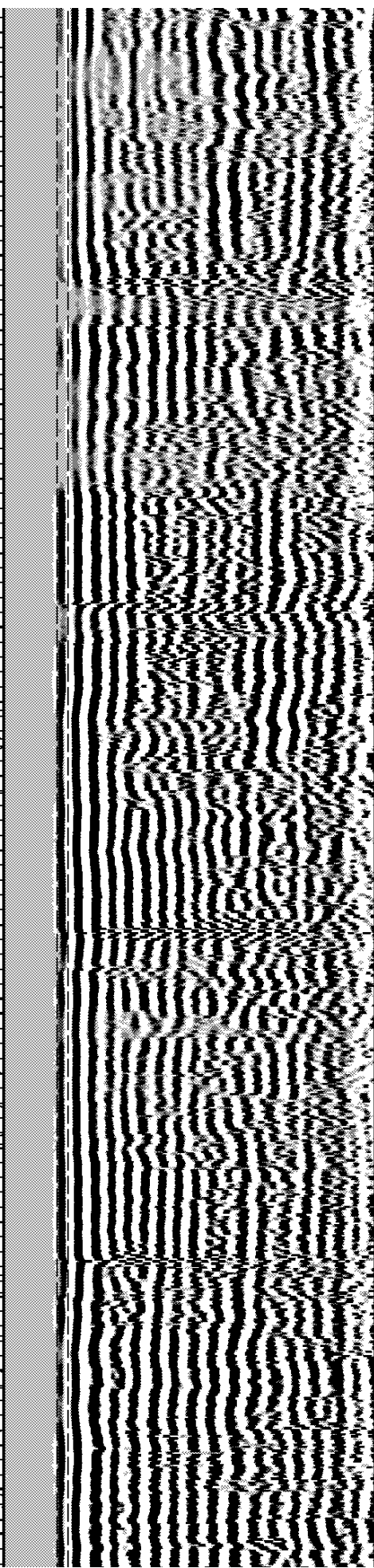
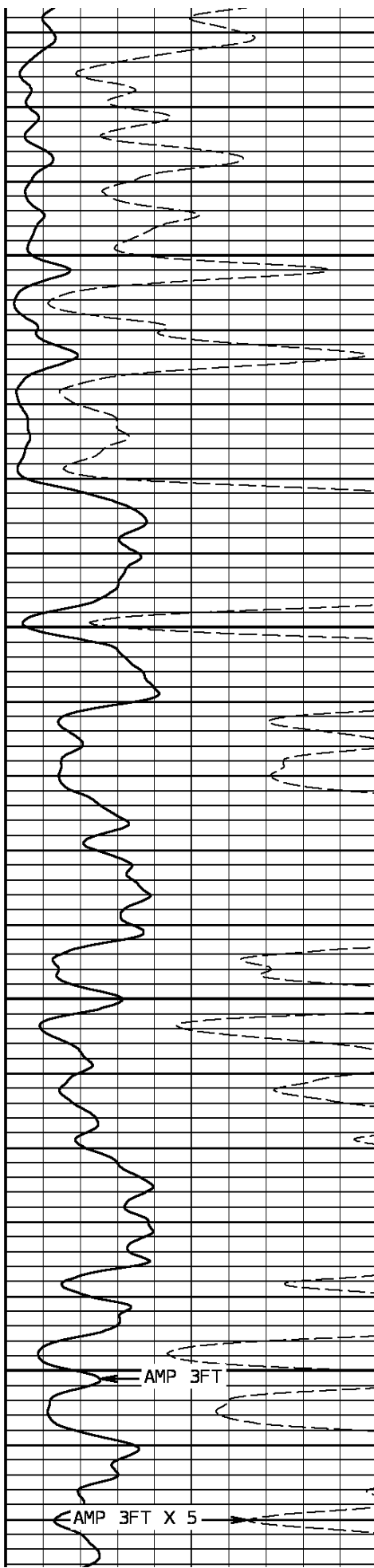
7300

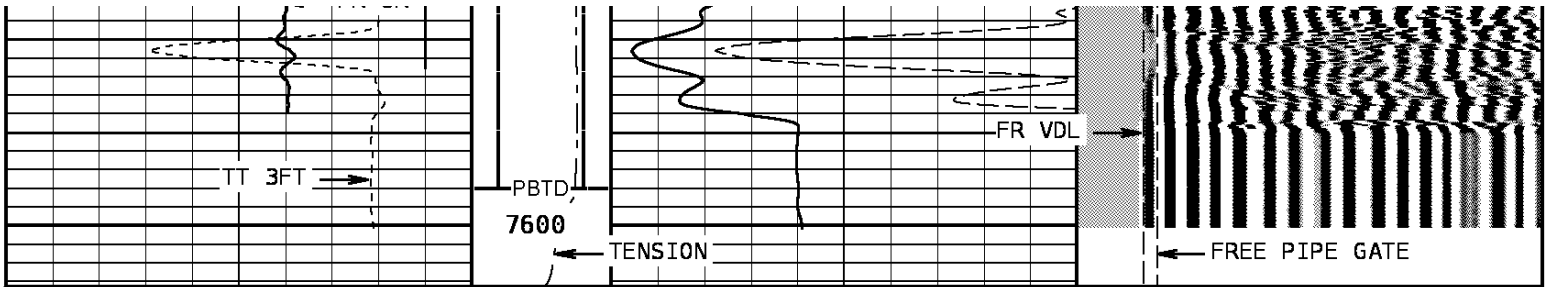




7400

7500





TRAVEL TIME 3FT			Tension		AMPLITUDE 3FT		VARIABLE DENSITY 5FT					
310	Microseconds	210			0	2400	0	Millivolts	100	200	Microseconds	1200
Gamma Ray					AMPLITUDE 3FT X5		FREE PIPE GATE					
0	API	150			0	Millivolts	20	200	Microseconds	1200		
Collar Locator							FREE PIPE GATE					
-4000	Millivolts	440					200	Microseconds	1200			

START DEPTH: 7606.6    DIRECTION: UP    DATE: 01/13/2009    TIME: 06:42    MODE: ORIGINAL

156900 CBLMAIN

MAIN PASS

DEPTH SCALE: 5":100'    VERSION: 80214133R"

REMARKS

LOGGED WITH 0 PSI @ SURFACE

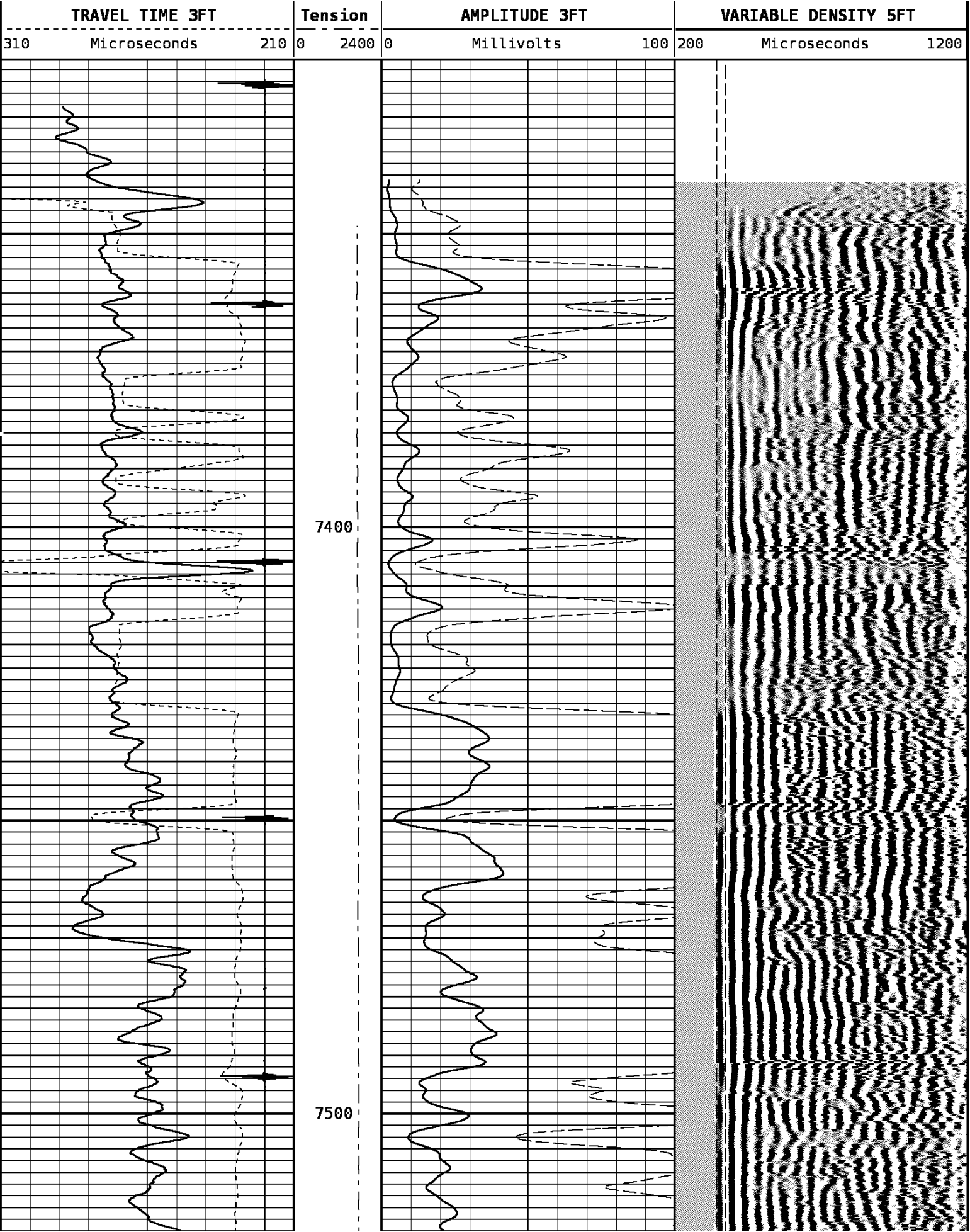
DEPTH SCALE: 5":100'    VERSION: 80214133R"

REPEAT PASS

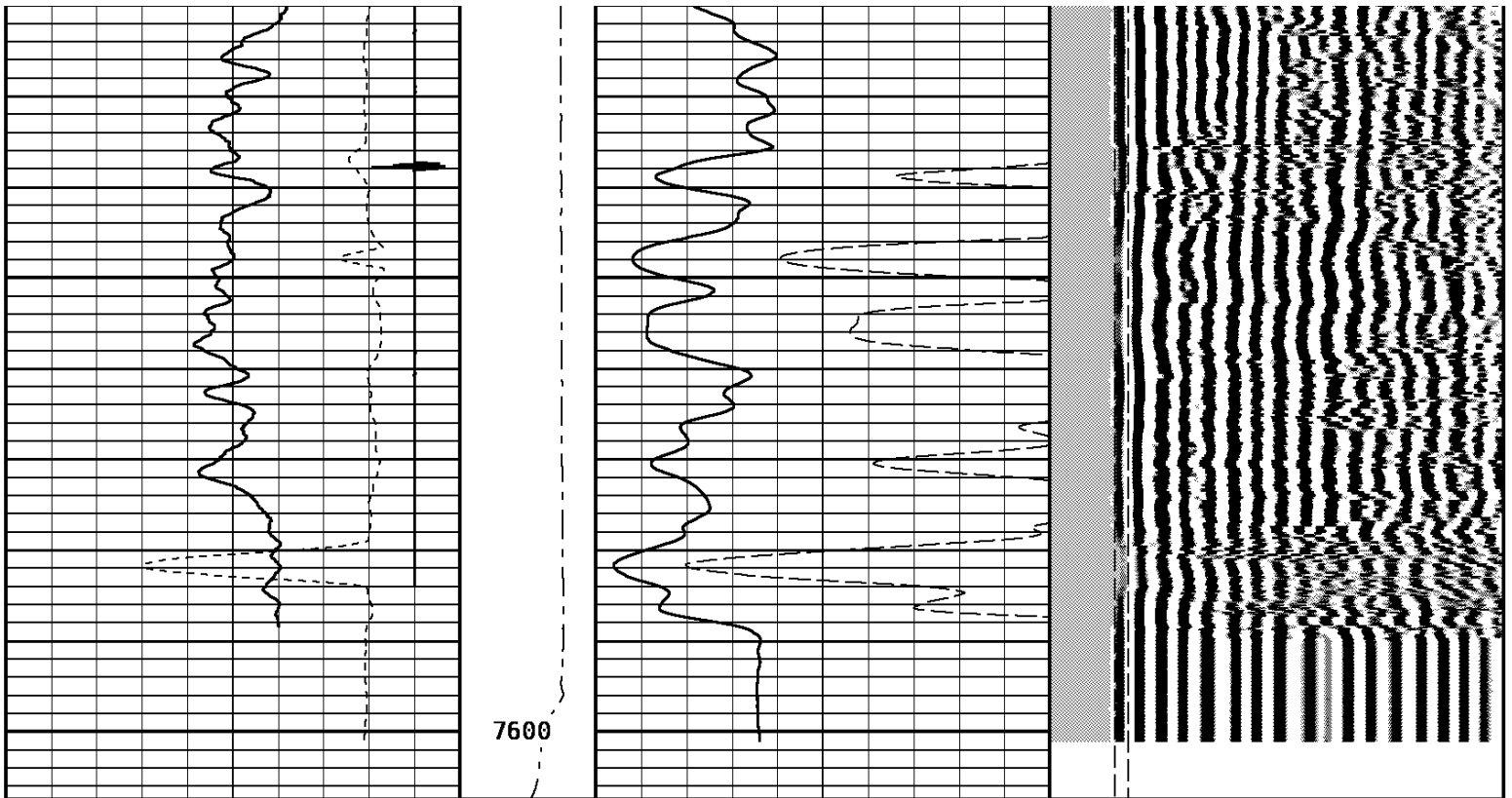
156900 CBLREPEAT

FINISH DEPTH: 7320.5 Feet    DIRECTION: UP    DATE: 01/13/2009    TIME: 06:06    MODE: ORIGINAL

Collar Locator						FREE PIPE GATE		
-4000	Millivolts	440				200	Microseconds	1200
Gamma Ray						FREE PIPE GATE		
0	API	150				0	Millivolts	20







7600

TRAVEL TIME 3FT			Tension	AMPLITUDE 3FT			VARIABLE DENSITY 5FT				
310	Microseconds	210		0	2400	0	Millivolts	100	200	Microseconds	1200
Gamma Ray				AMPLITUDE 3FT X5			FREE PIPE GATE				
0	API	150		0		0	Millivolts	20	200	Microseconds	1200
Collar Locator							FREE PIPE GATE				
-4000	Millivolts	440							200	Microseconds	1200

START DEPTH: 7607.5    DIRECTION: UP    DATE: 01/13/2009    TIME: 06:06    MODE: ORIGINAL

156900 CBLREPEAT

REPEAT PASS

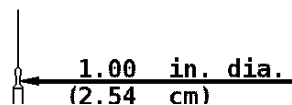
DEPTH SCALE: 5":100'

VERSION: 80214133R"

### 1 7/16 Adapter Head

Weight 2.2 LB.  
Length 12 IN.  
Max. Diameter 1.44 IN.

Total Stack Weight 208.0 LBS. in air  
Total Stack Length 25.34 FT.



### Collar Locator

Weight 39.8 LBS.  
Length 3.40 FT.  
Max. Diameter 2.75 IN.

### Slim Hole Gamma Ray

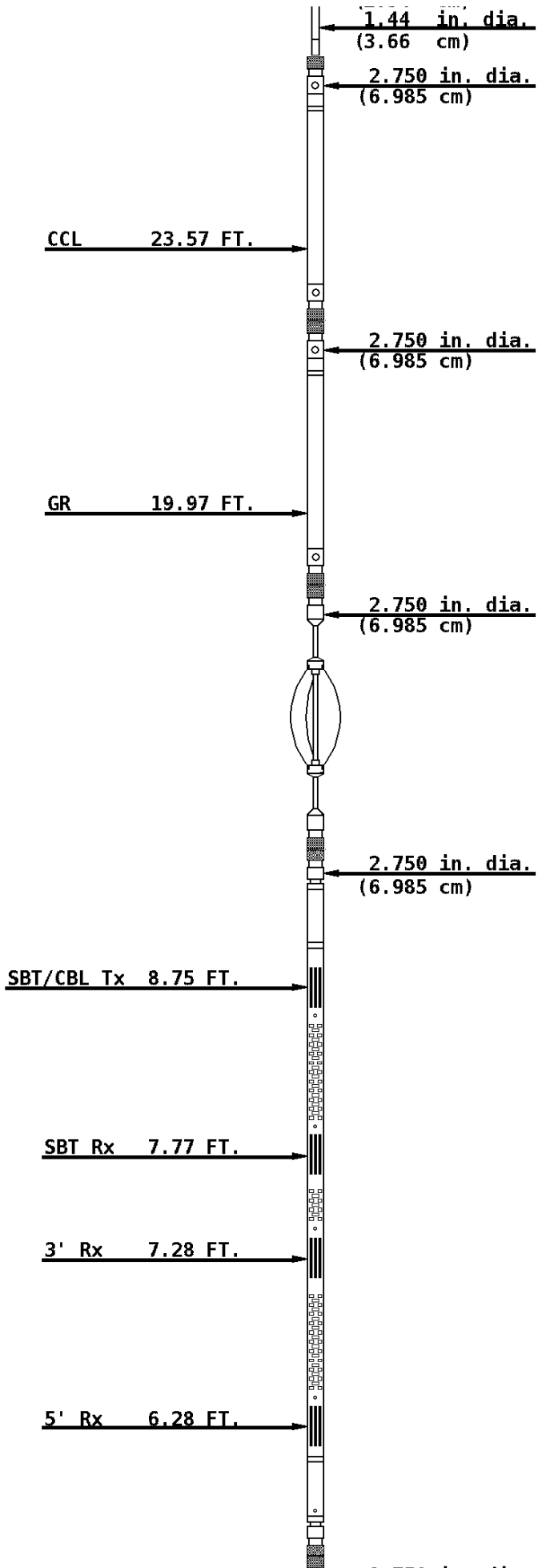
Weight 39.8 LBS.  
Length 4.71 FT.  
Max. Diameter 2.750 IN.

### Slim Hole Centralizer

Weight 22 LBS.  
Length 3.08 FT.  
Max. Diameter 2.750 IN.

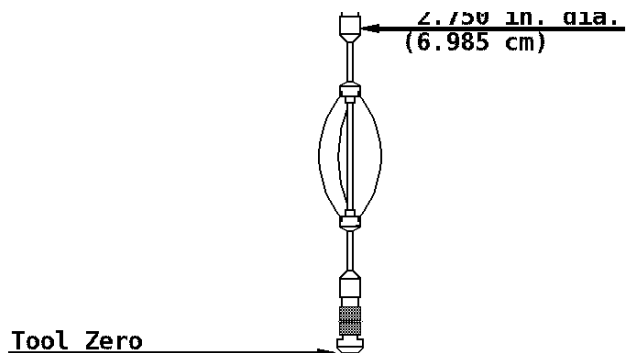
### Sector Bond

Weight 89.2 LBS.  
Length 10.32 FT.  
Max. Diameter 2.750 IN.



### Slim Hole Centralizer

Weight 15.0 LBS.  
Length 2.82 FT.  
Max. Diameter 2.750 IN.



COMPANY BILL BARRETT CORPORATION

WELL JCJ 22C-21-692

FIELD MAMM CREEK

COUNTY GARFIELD

STATE COLORADO



**Weatherford®**