

COMPANY BILL BARRETT CORPORATION									
WELL JCJ 21A-21-692									
FIELD MAMM CREEK									
CNTY GARFIELD STATE CO									
<div> <div> COMPANY BILL BARRETT CORPORATION WELL JCJ 21A-21-692 FIELD MAMM CREEK COUNTY GARFIELD </div> <div> STATE COLORADO </div> </div>									
<div> <div> LOCATION: SHL: 1577' FNL & 1359' FWL BHL: 1185' FNL & 1980' FWL SEC. 21 TWP. 6S RGE. 92W </div> <div> OTHER SERVICES: JB/GR 3.781" @ 7744' </div> </div>									
PERM. DATUM GROUND LEVEL ELEV. 5680' LOG MEASURED FROM K.B. 17 FT. ABOVE PERMANENT DATUM DRILLING MEASURED FROM KELLY BUSHING									
DATE	13-JAN-2009	API#:	05-045-16856						
RUN NO.	ONE								
DEPTH DRILLER	7840'								
DEPTH LOGGER	7744'								
BTM. LOG INTERVAL	7738'								
TOP LOG INTERVAL	3300'								
OPEN HOLE SIZE	7.875"								
TYPE FLUID	Water Based								
DENS.	VISC.	8.3	N/A						
MAX. REC. TEMP.	188 DEG FHT.		O.H. LOG						
EST. CEMENT TOP	4120'								
TIME WELL READY	ROA								
TIME LOGGER ON BTM.	SEE LOG								
EQUIP. NO.	14113								
LOCATION	GRAND JUNCTION								
RECORDED BY	BRUCE MILLER								
WITNESSED BY	GARY ETTER								
BOREHOLE RECORD									
RUN NO.	BIT	FROM	TO	SIZE	WGT.	FROM	TO		
CASING RECORD									
	SIZE	WT/FT	GRADE	TYPE JOINT	TOP		BOTTOM		
SURFACE STRING									
PROT. STRING	9.625"	36#			SURF		830'		
PROD. STRING	4.500"	11.6	I-80		SURF		7840'		
LINER									
SEE REMARKS									

All interpretations of log data are opinions based on inferences from electrical or other measurements. We do not guarantee the accuracy or correctness of any interpretation or recommendation and we shall not be liable or responsible for any loss, cost, damages or expenses incurred or sustained by anyone resulting from any interpretation or recommendation made by any of our employees or agents.

REMARKS		Rig: CRANE #15062		Service Order # 156897	
LOG WAS CORRELATED +3' TO WEATHERFORD TRIPLE COMBO LOG DATED 10-DEC-2008.					
SHORT JOINTS WERE FOUND @ 5730'-5758', AND 7402'-7430.5',					
EST. TOP OF CEMENT WAS FOUND @ 4120'.					
WELL WAS LOGGED WITH 0 PSI @ SURFACE.					
YOUR CREW TODAY IS: JOHN YANC AND PAUL KRUGER.					
THANK YOU FOR CHOOSING WEATHERFORD WIRELINE, GRAND JUNCTION, CO. 970-263-8501.					
		EQUIPMENT DATA			
Bit Size	7.875"	Run No.	Tool Type	Tool No.	Other
Well Status	NEW DRILL	ONE	CTBA	172	
Surface Pressure		ONE	GRBA	172	
Shut In	Flowing	ONE	CENB	257	
0 PSI	NO	ONE	SBTA	339	
		ONE	CENC	210	

REMARKS

LOGGED WITH 0 PSI @ SURFACE

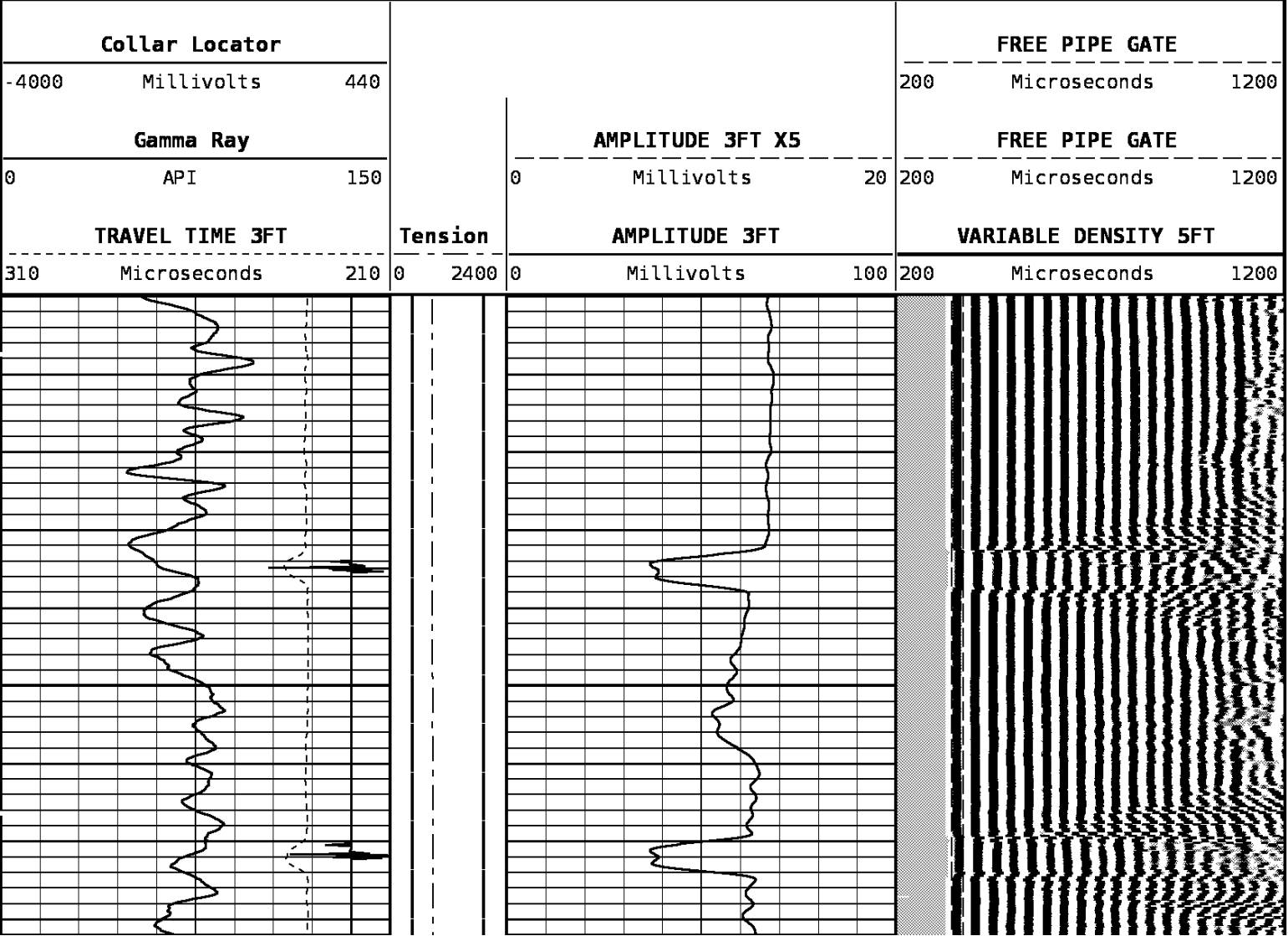
DEPTH SCALE: 5":100'

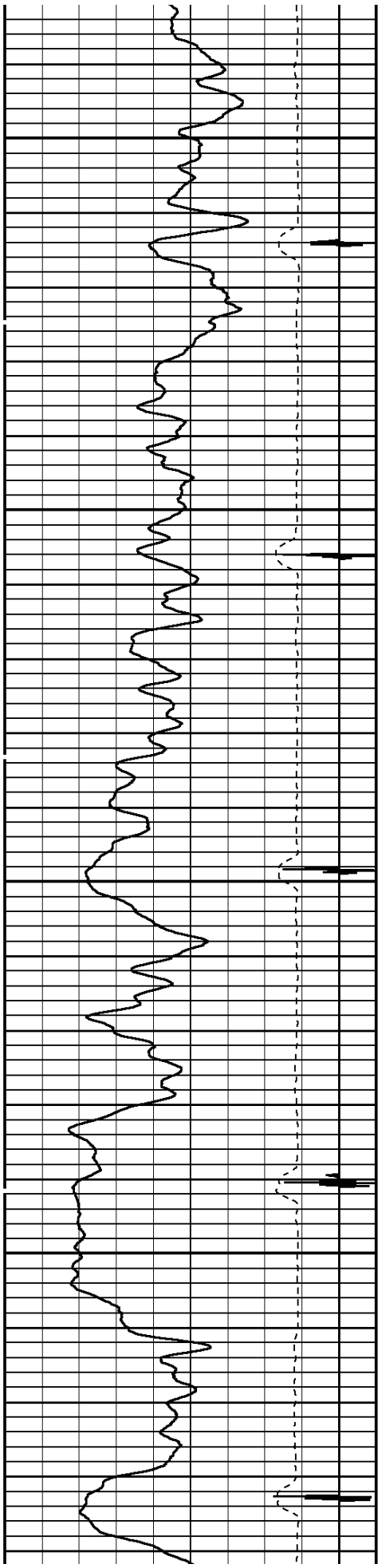
VERSION: 80214133R"

MAIN PASS

156897 CBLMAIN

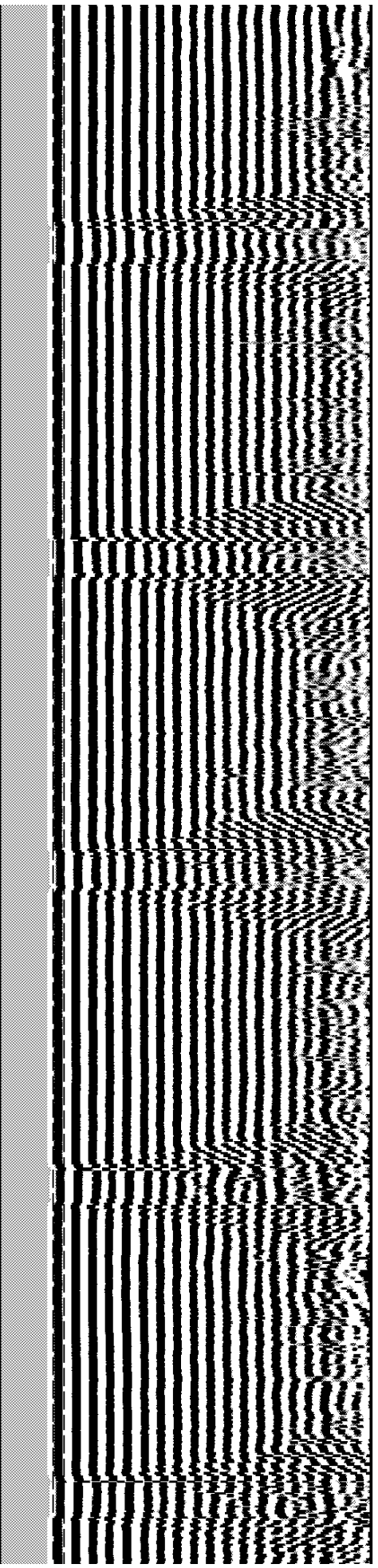
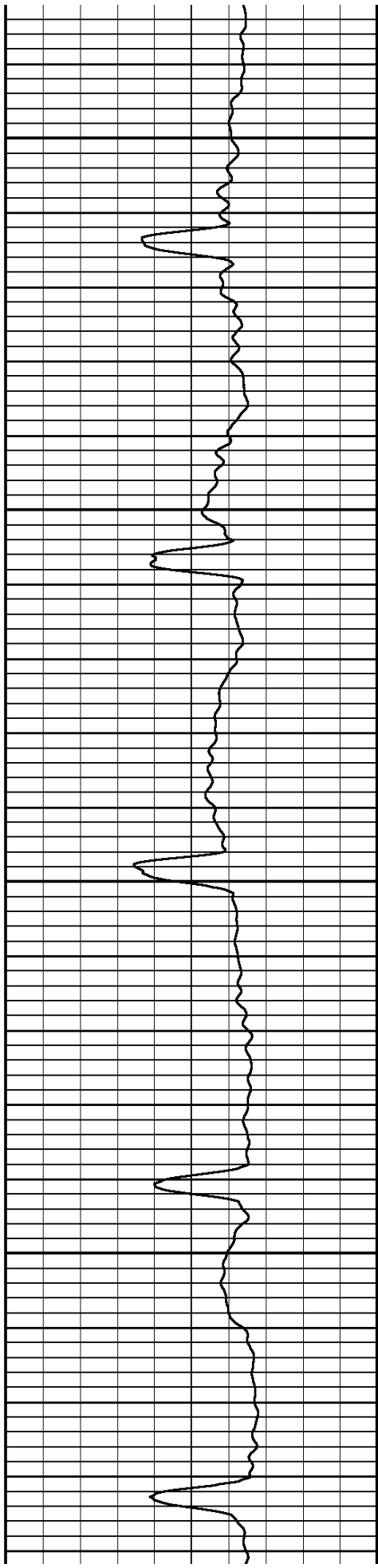
FINISH DEPTH: 3300.1 Feet DIRECTION: UP DATE: 01/13/2009 TIME: 17:32 MODE: ORIGINAL

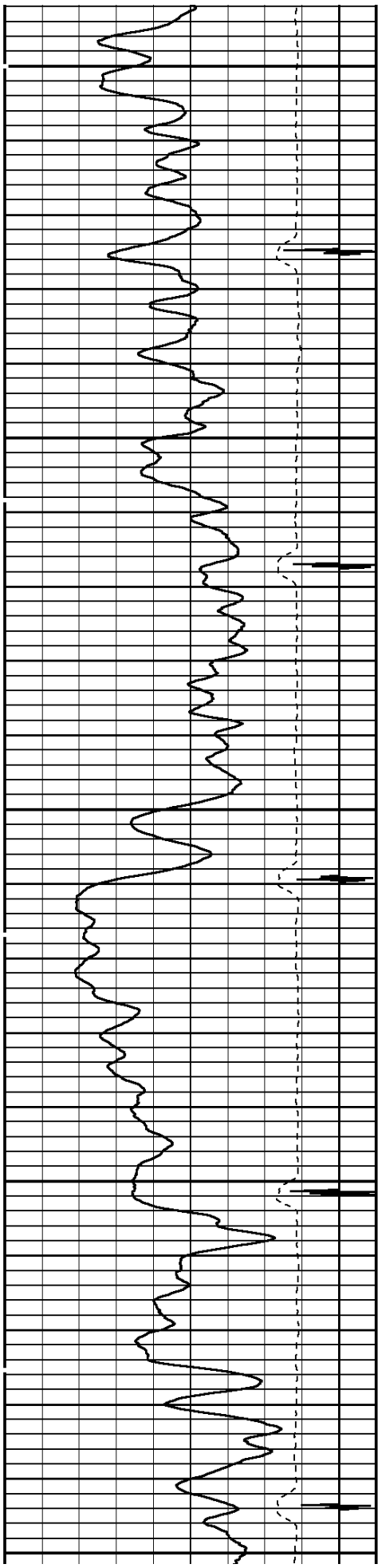




3400

3500

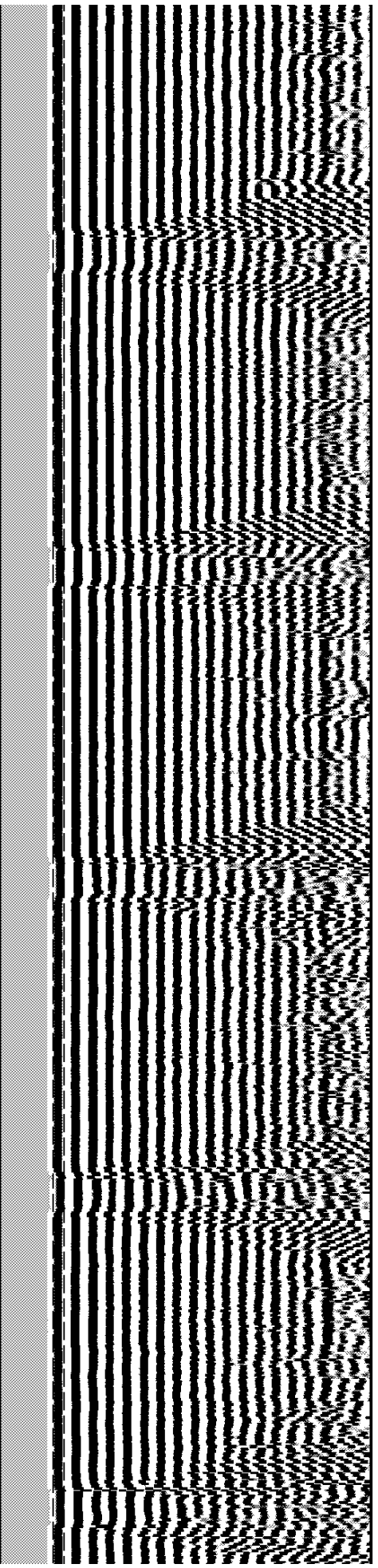
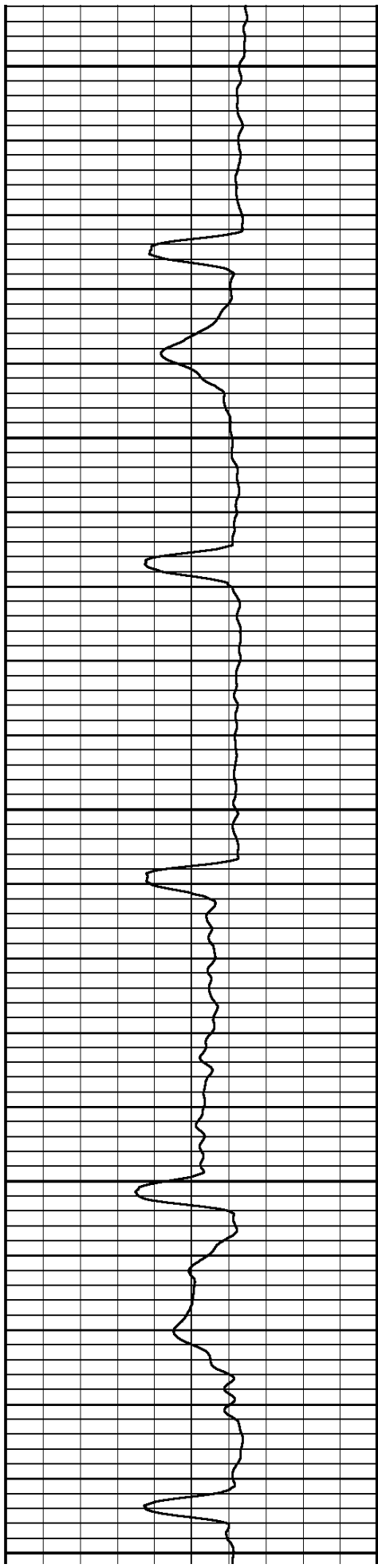


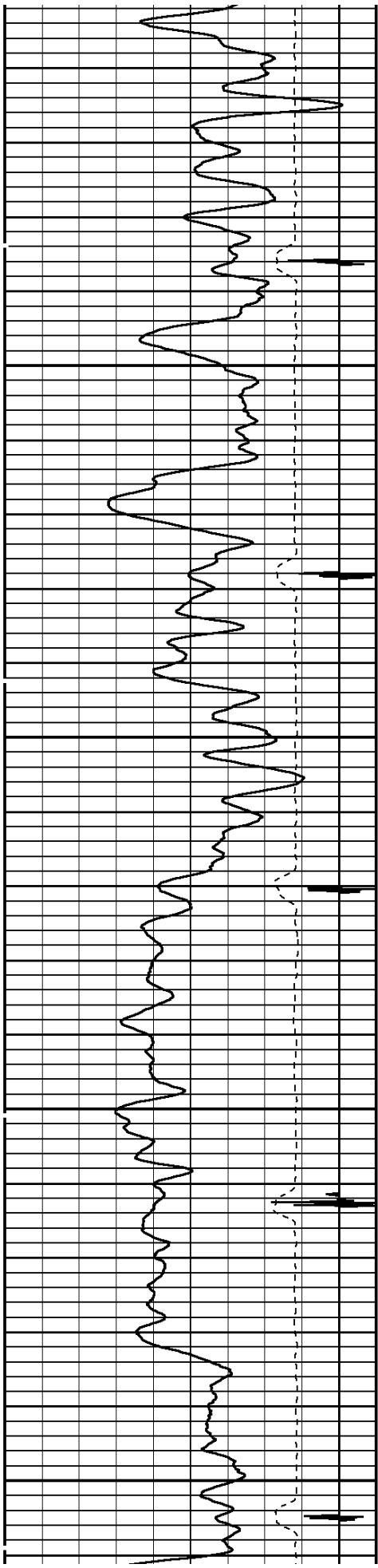


3600

3700

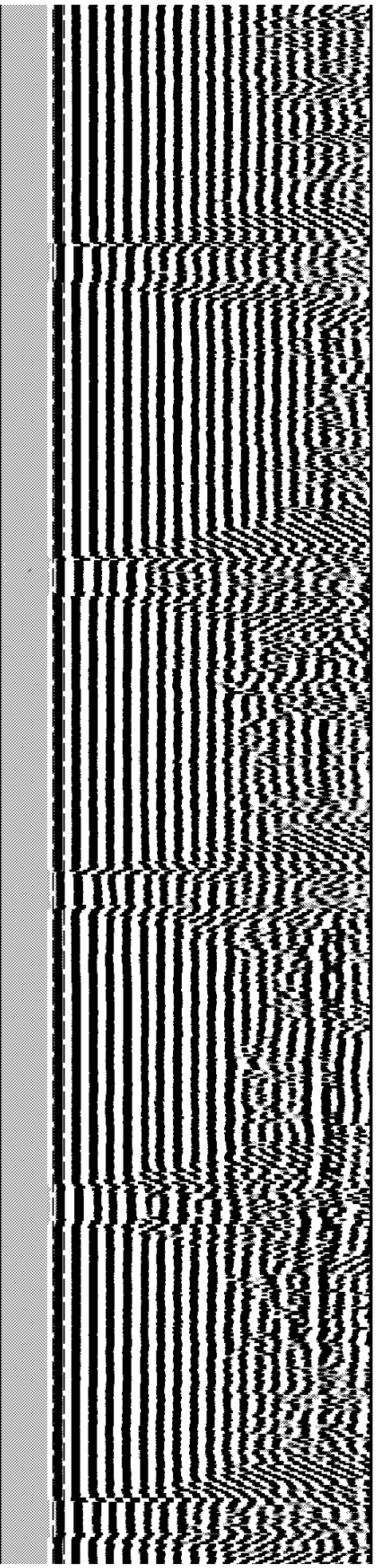
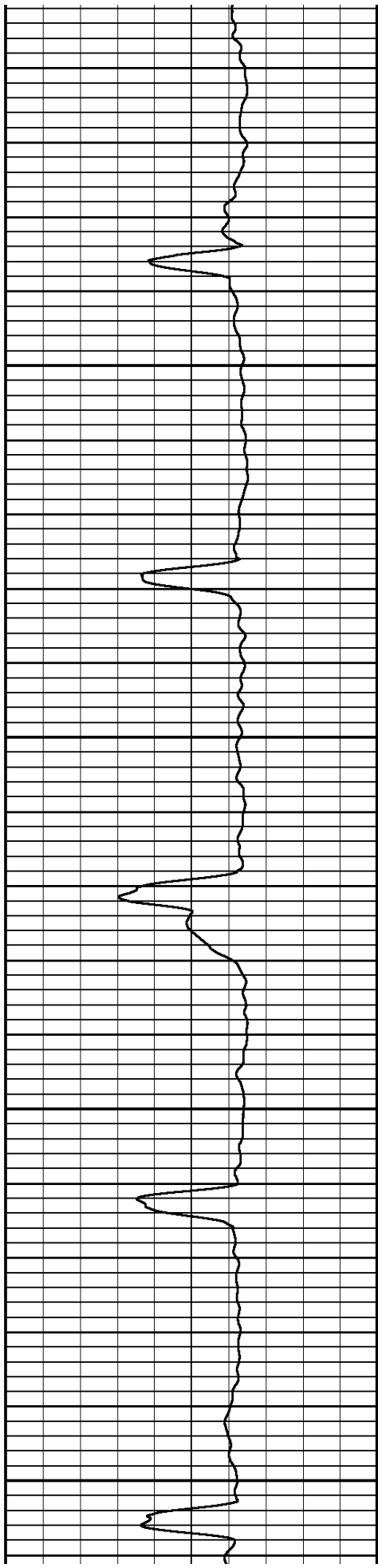
3800

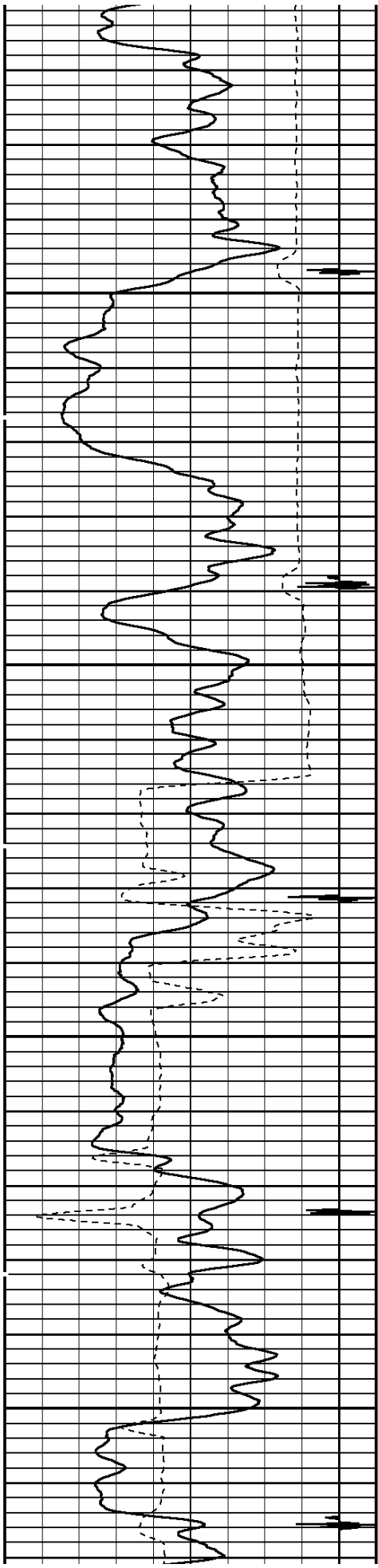




3900

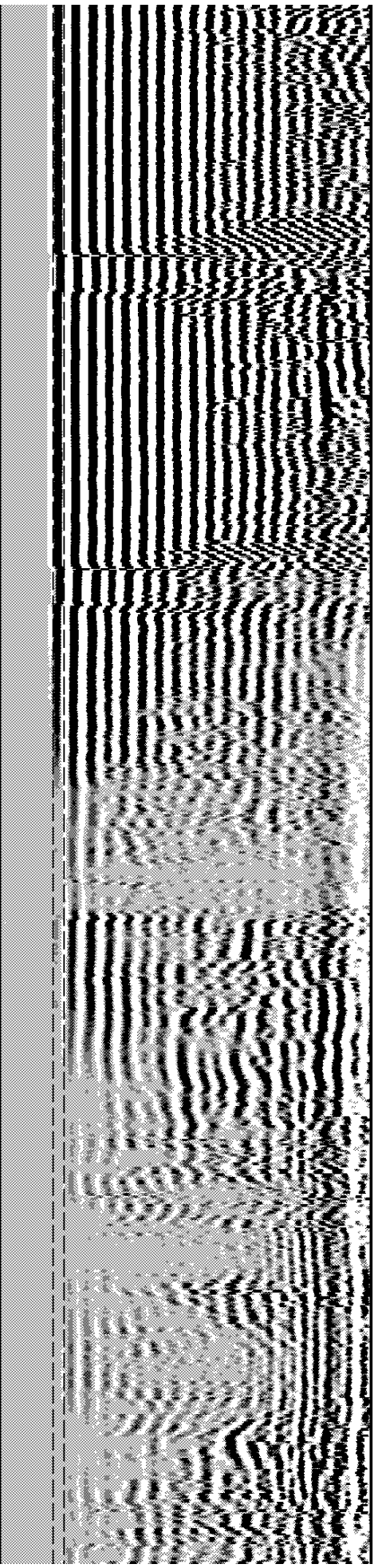
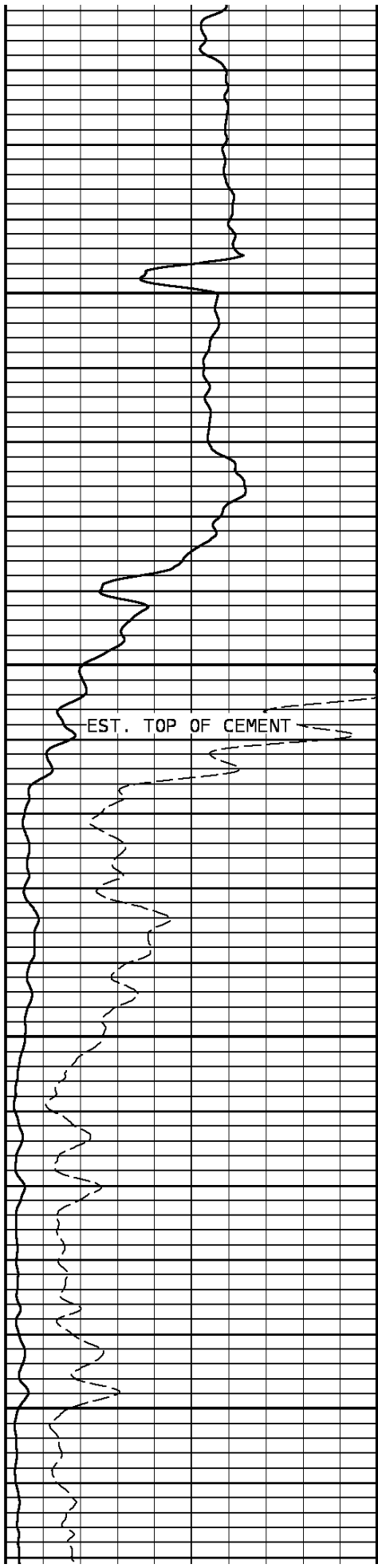
4000

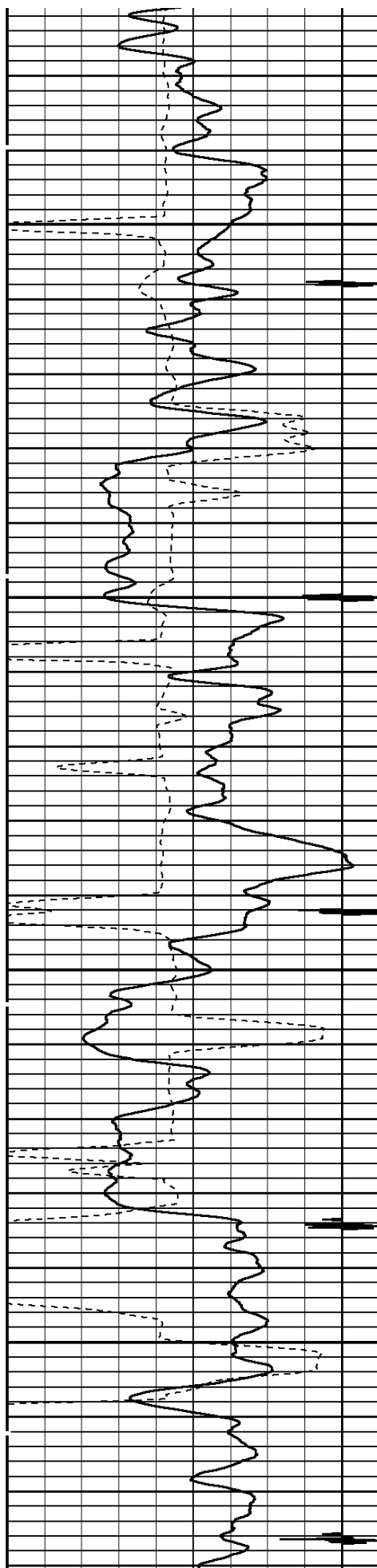




4100

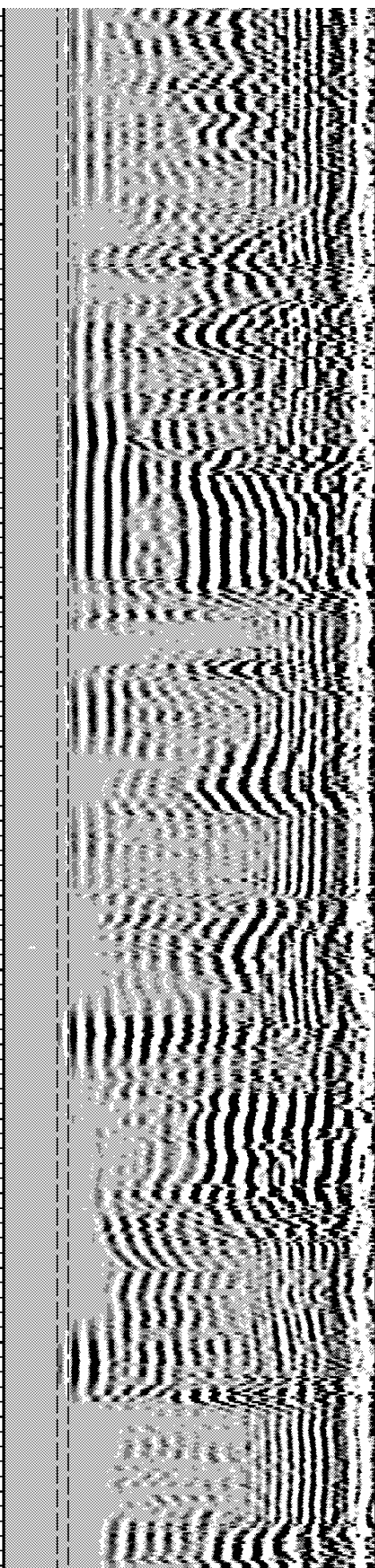
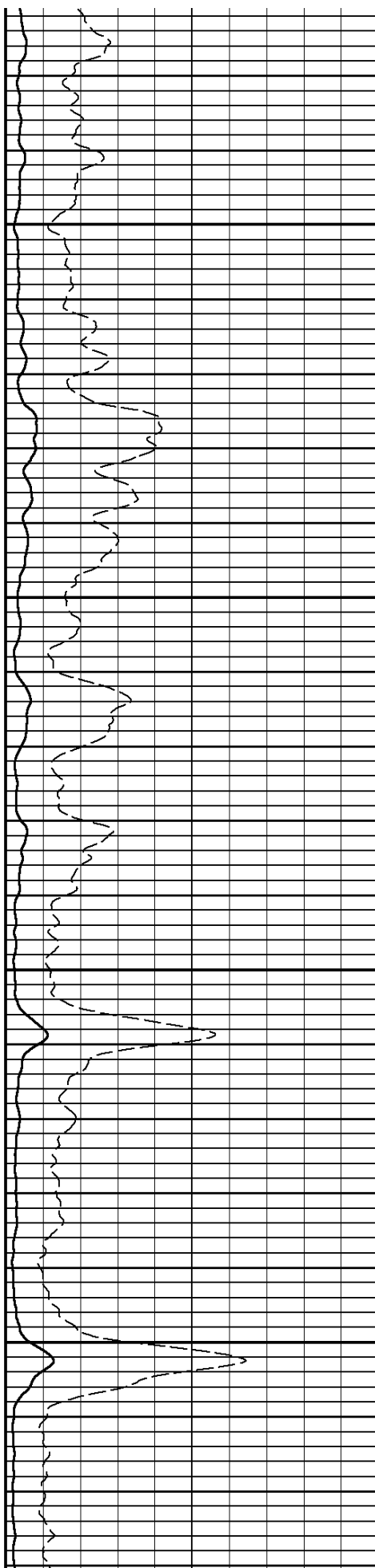
4200

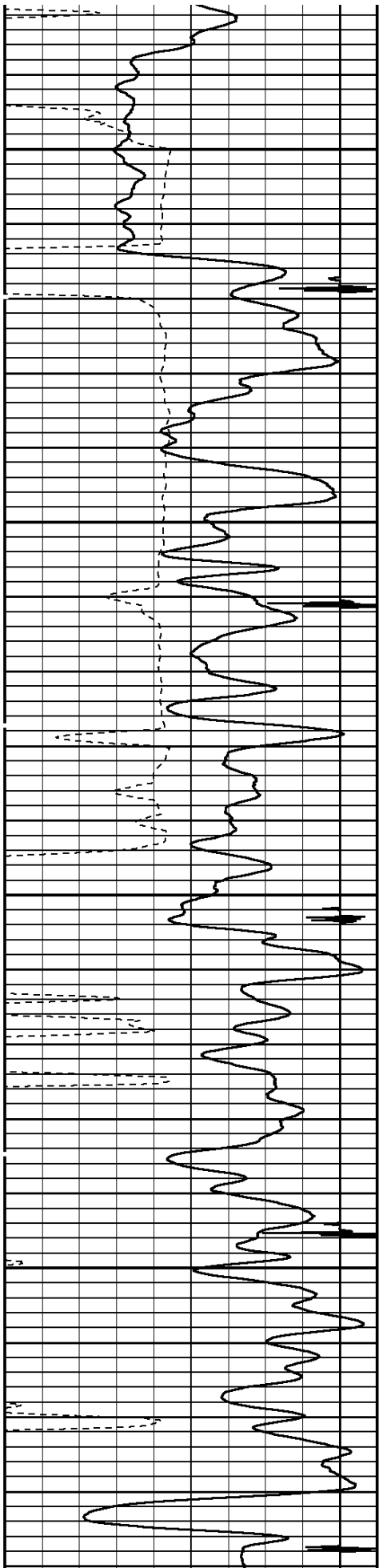




4300

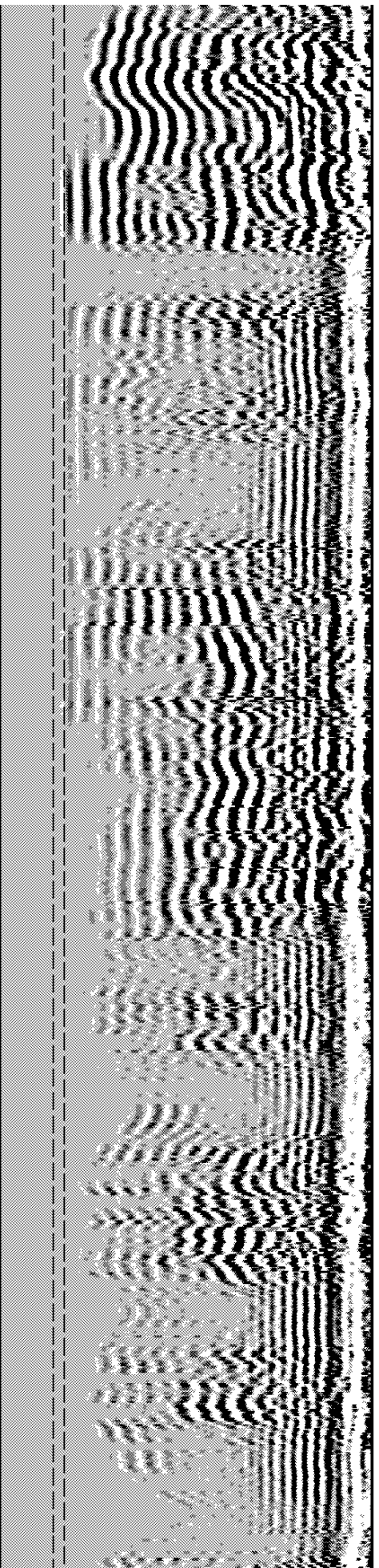
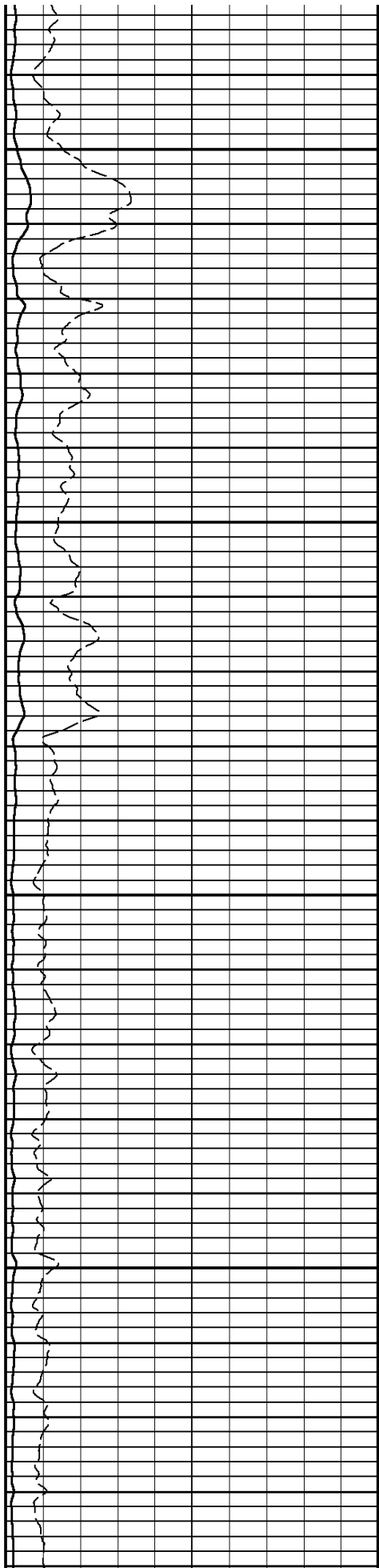
4400

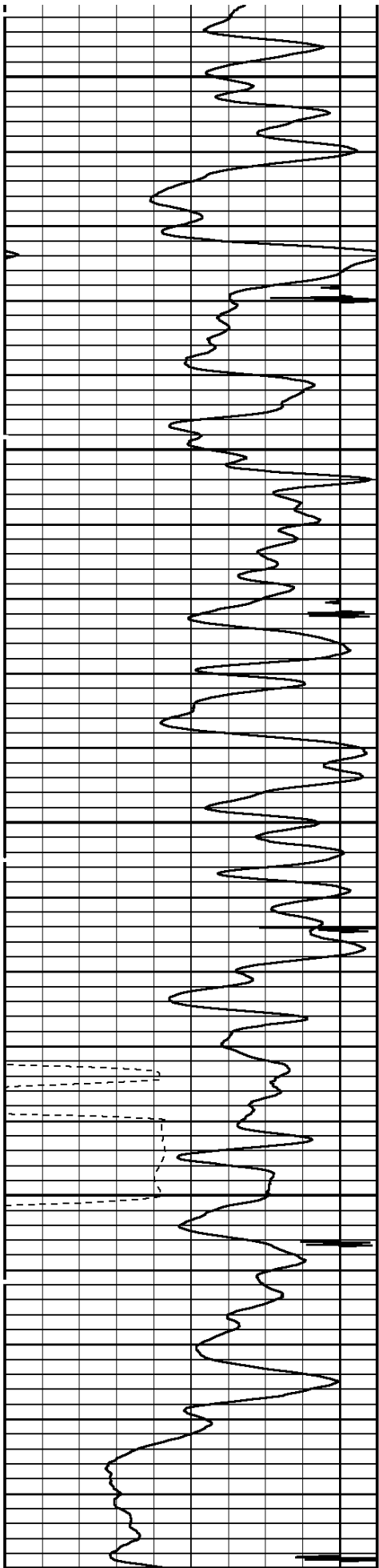




4500

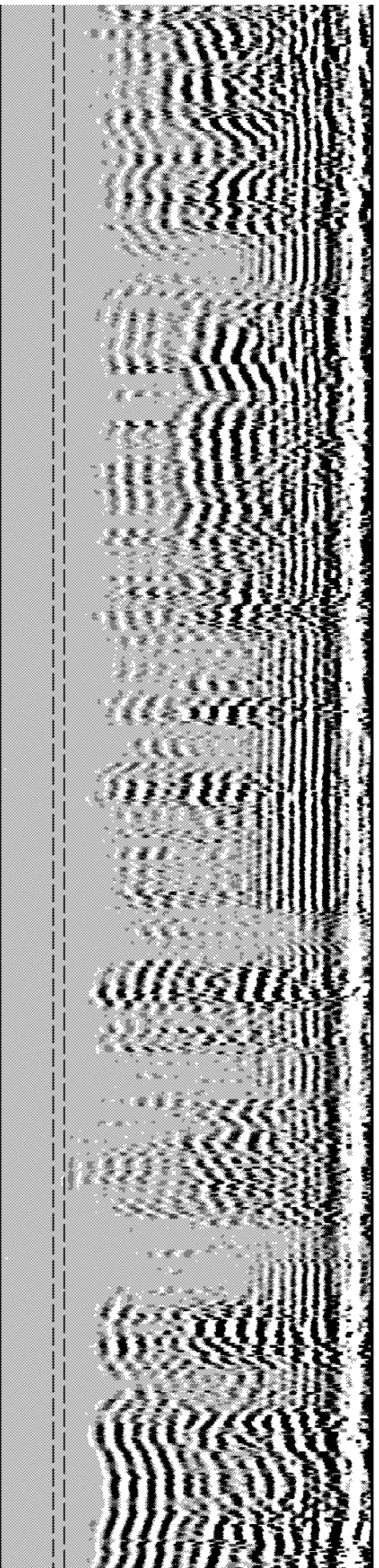
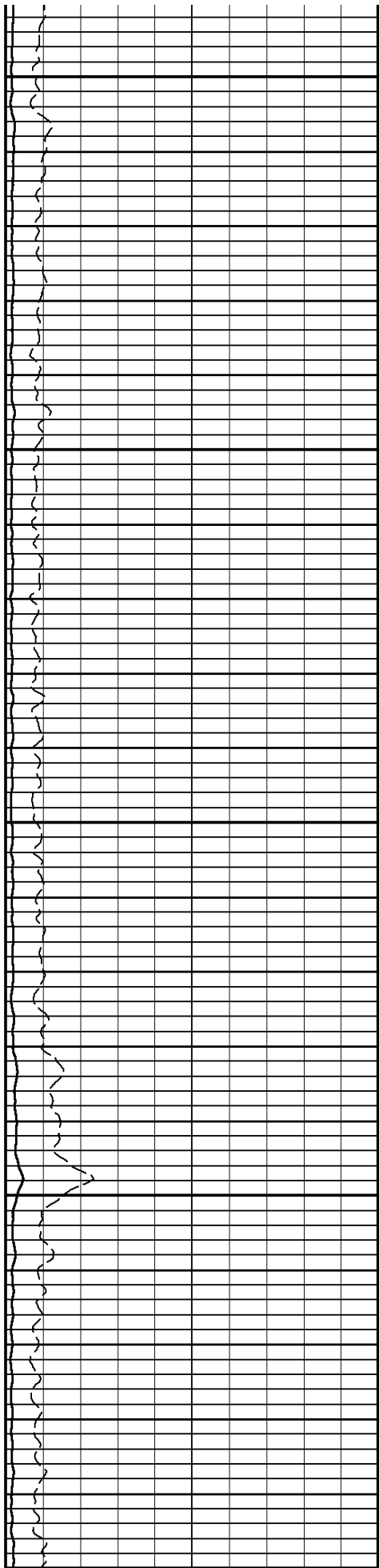
4600

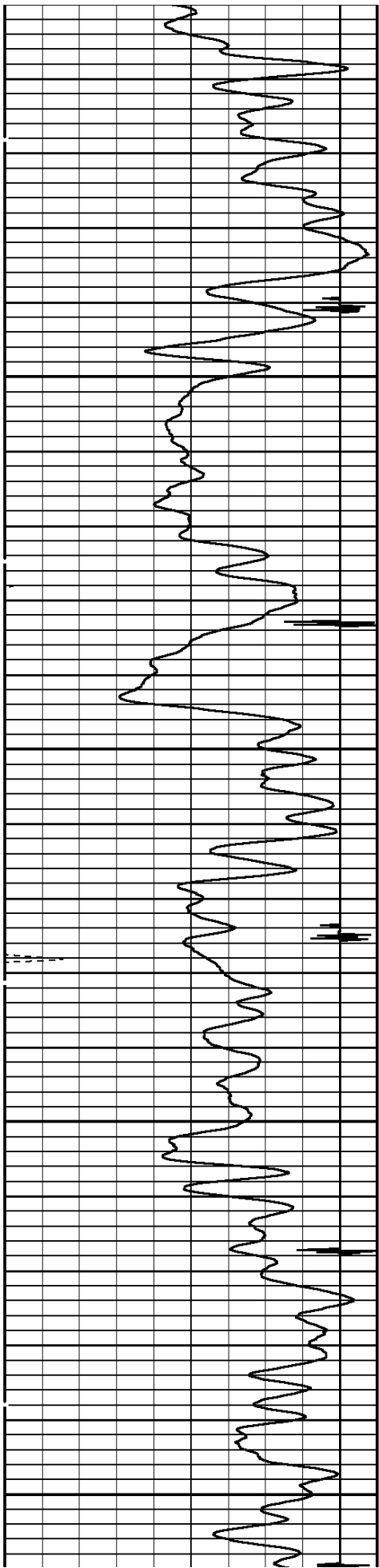




4700

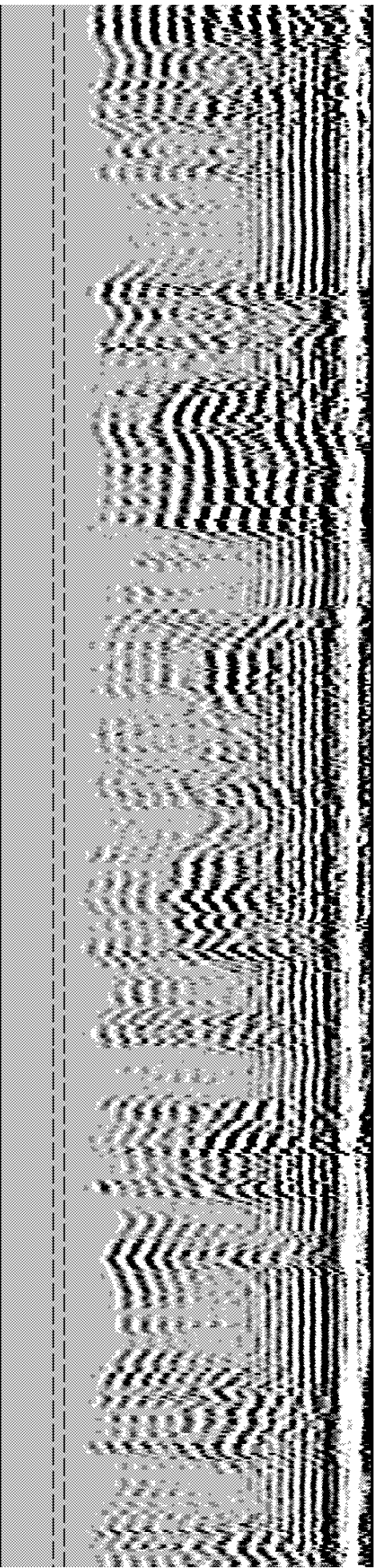
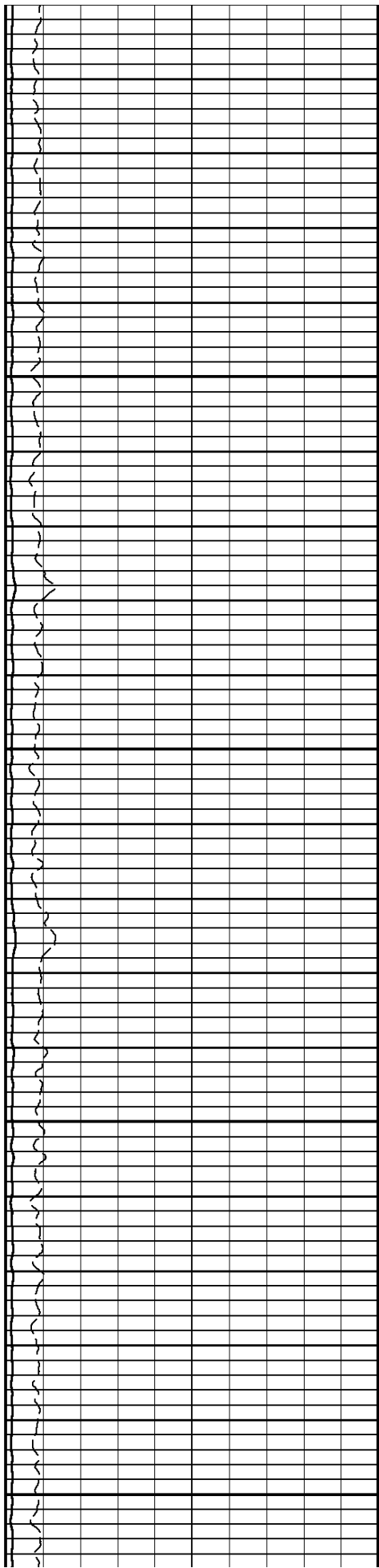
4800

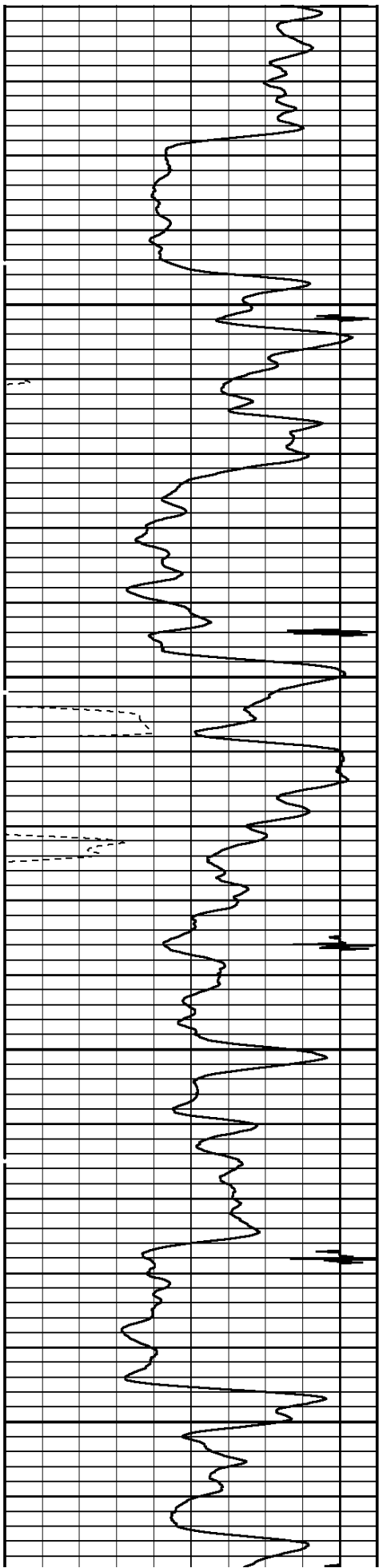




4900

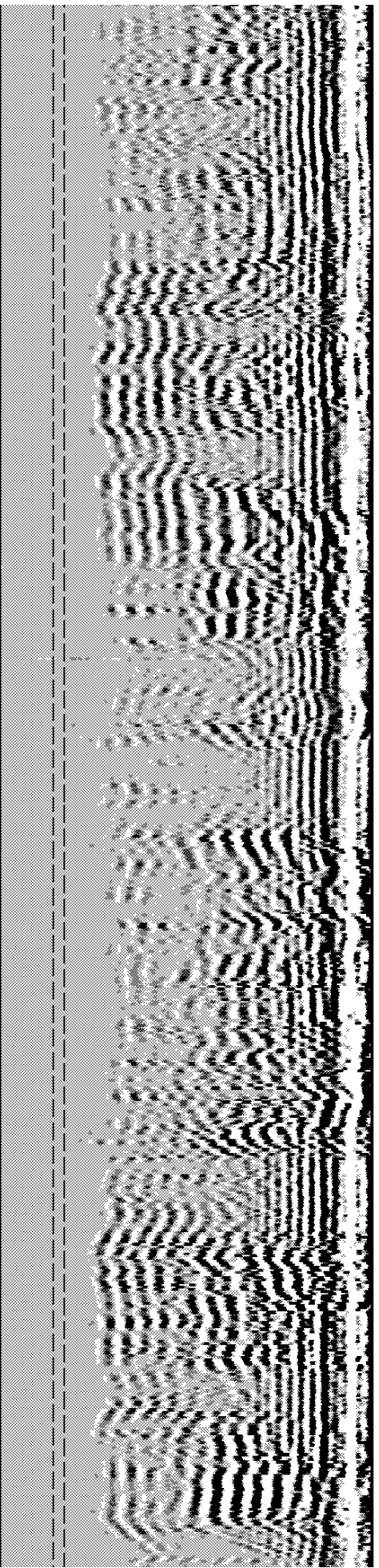
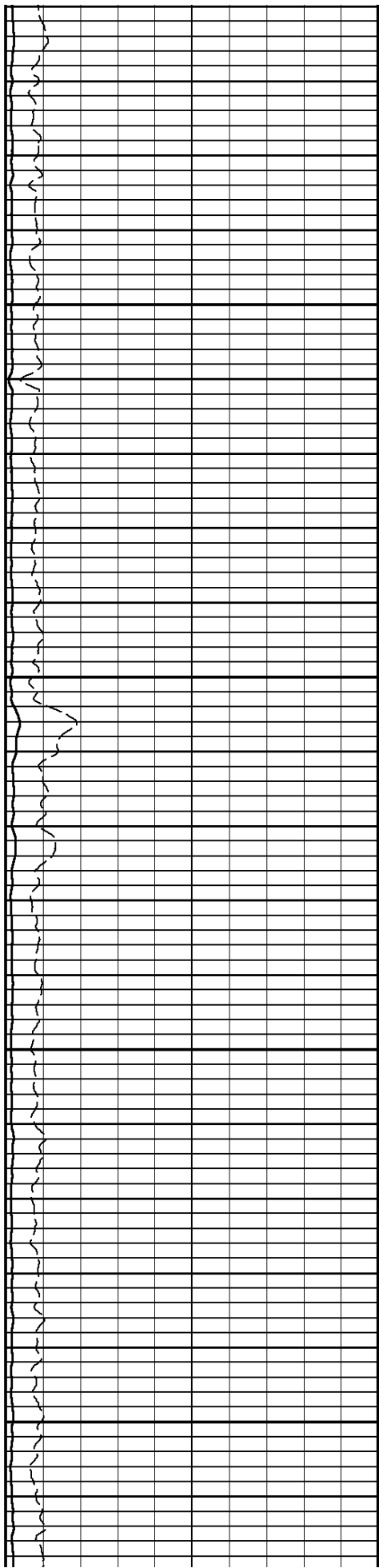
5000

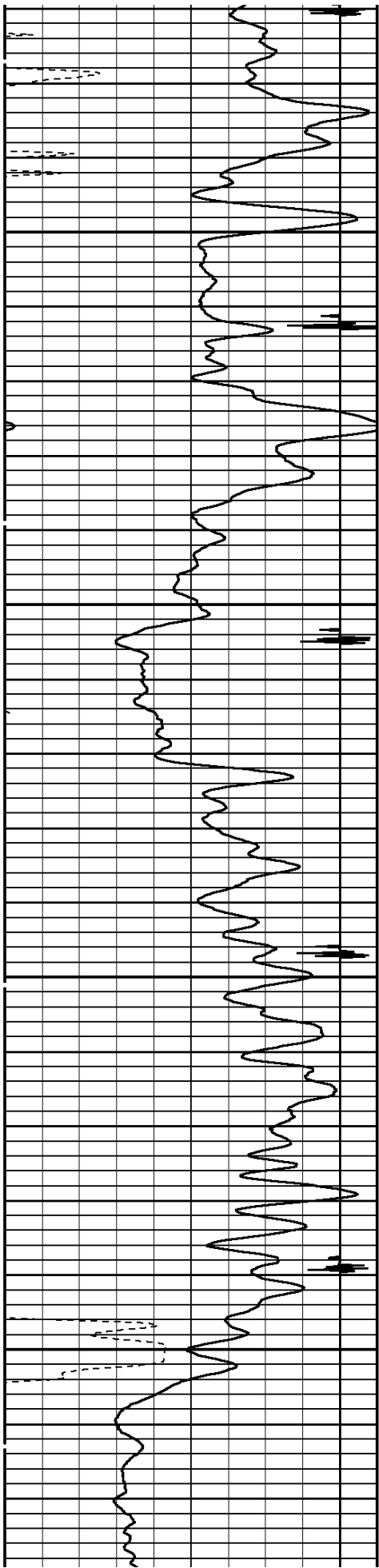




5100

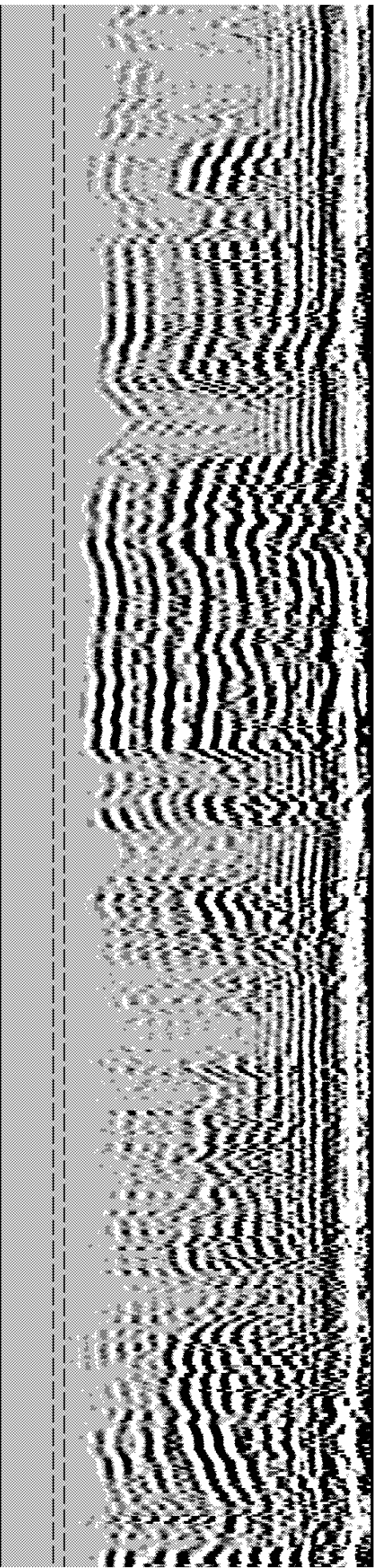
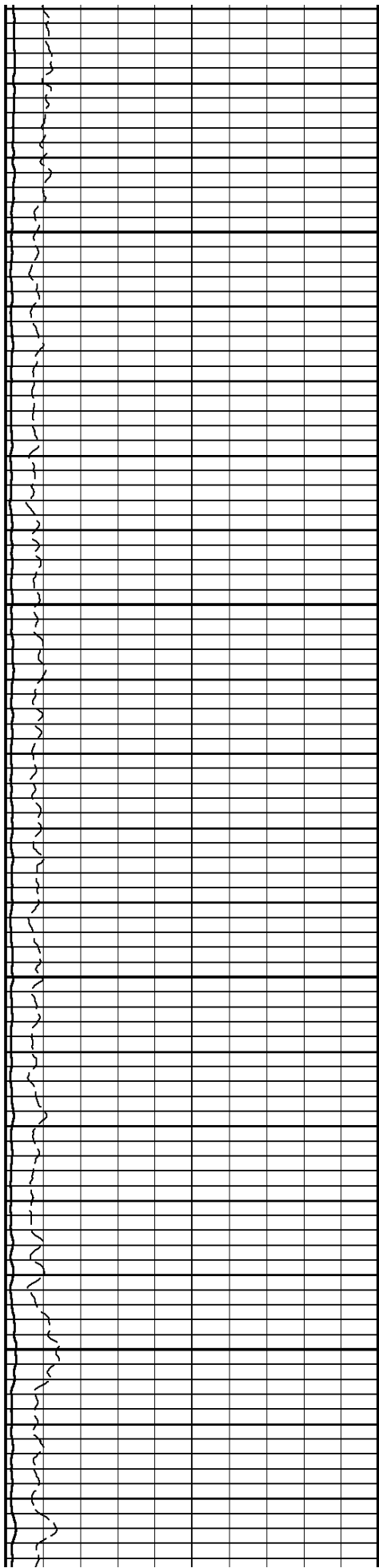
5200

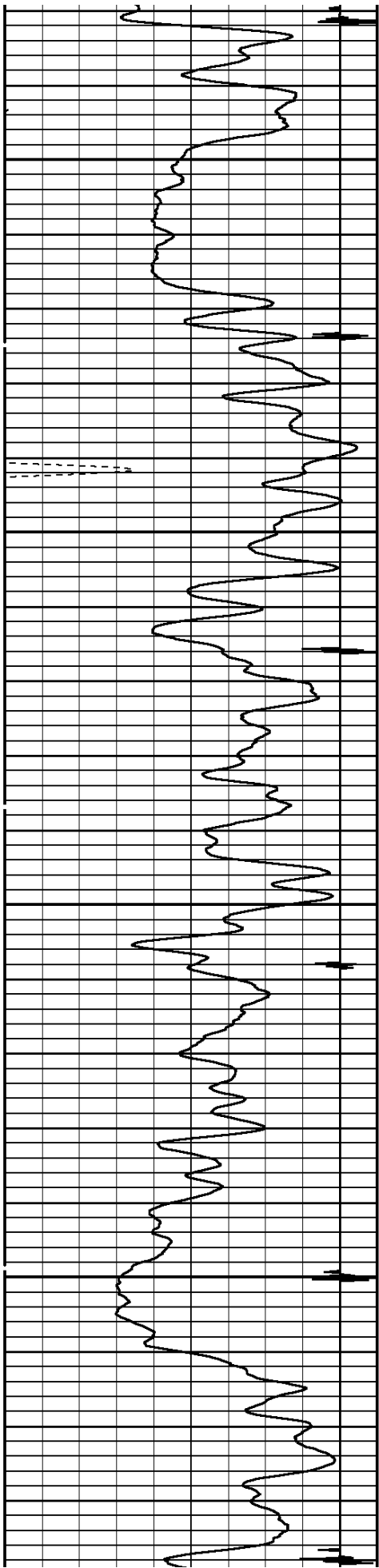




5300

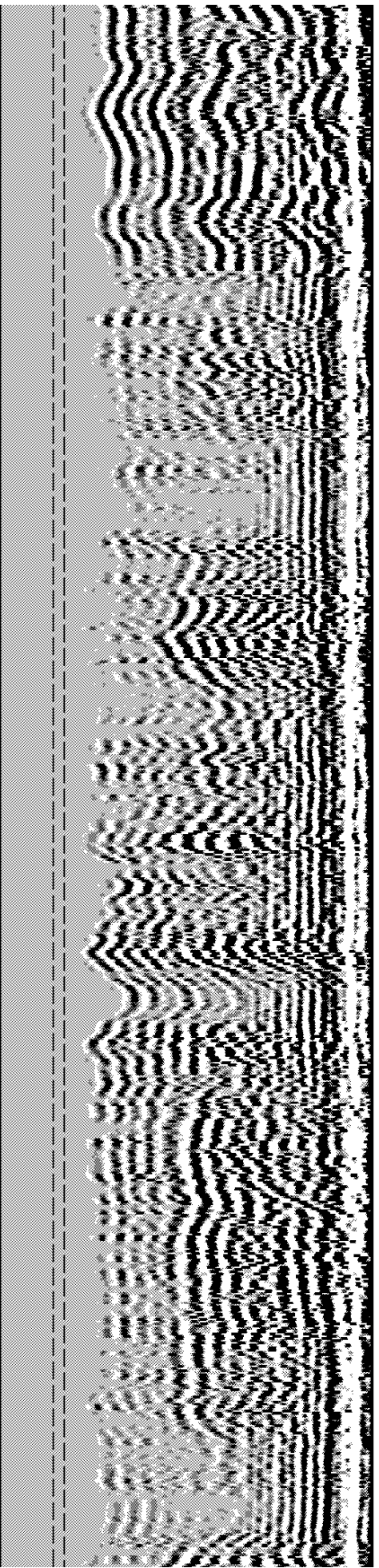
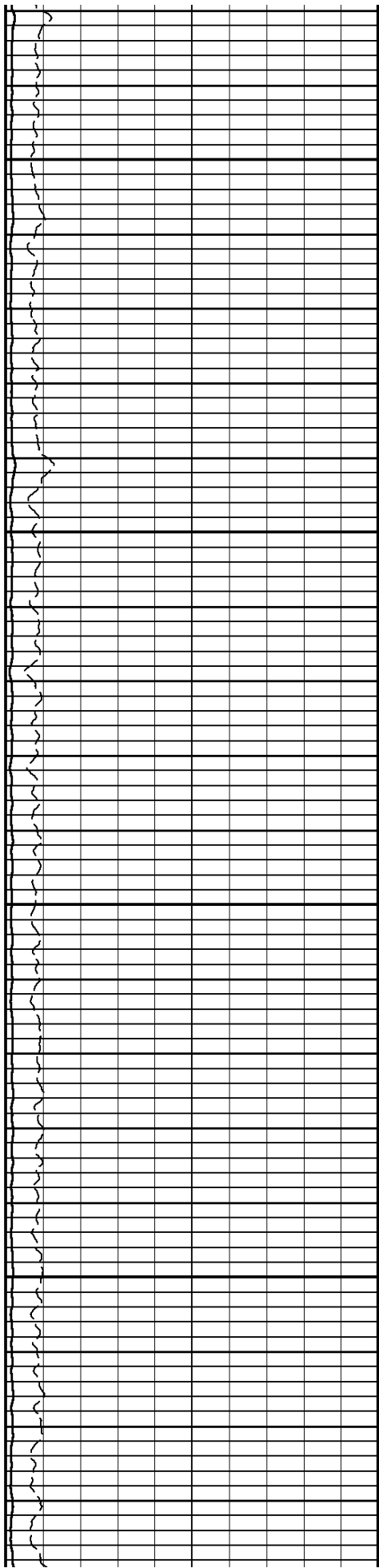
5400

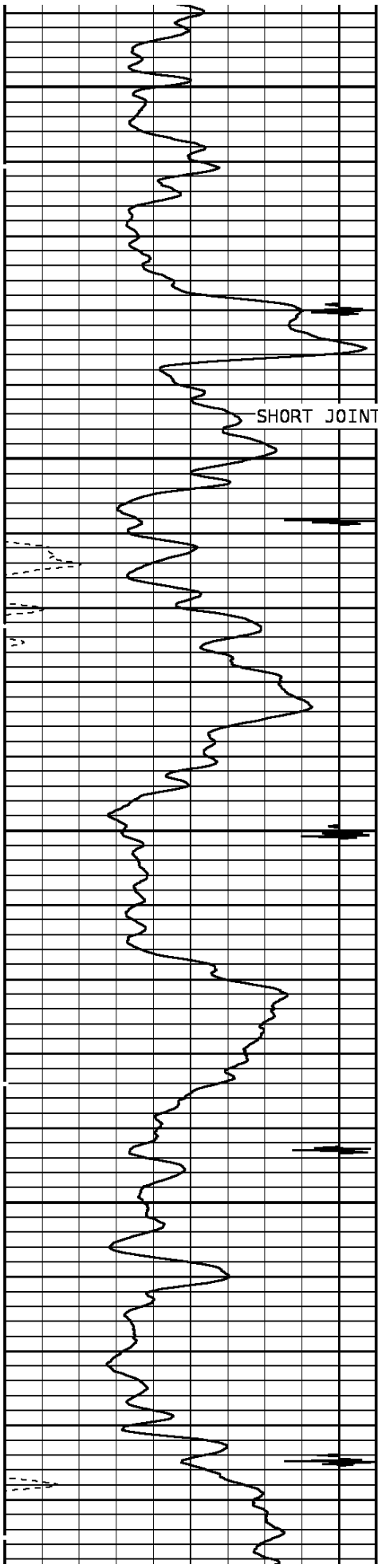




5500

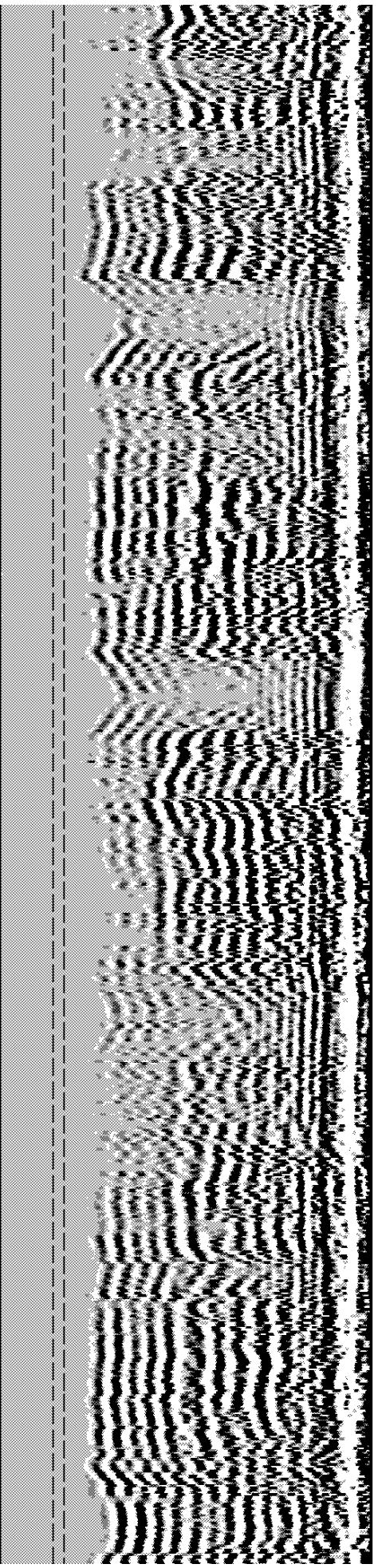
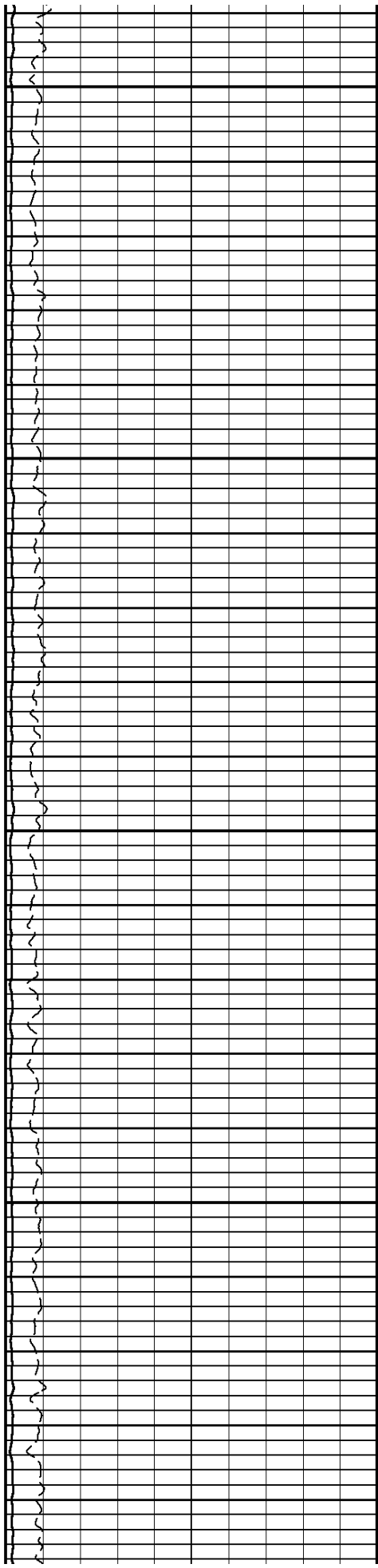
5600

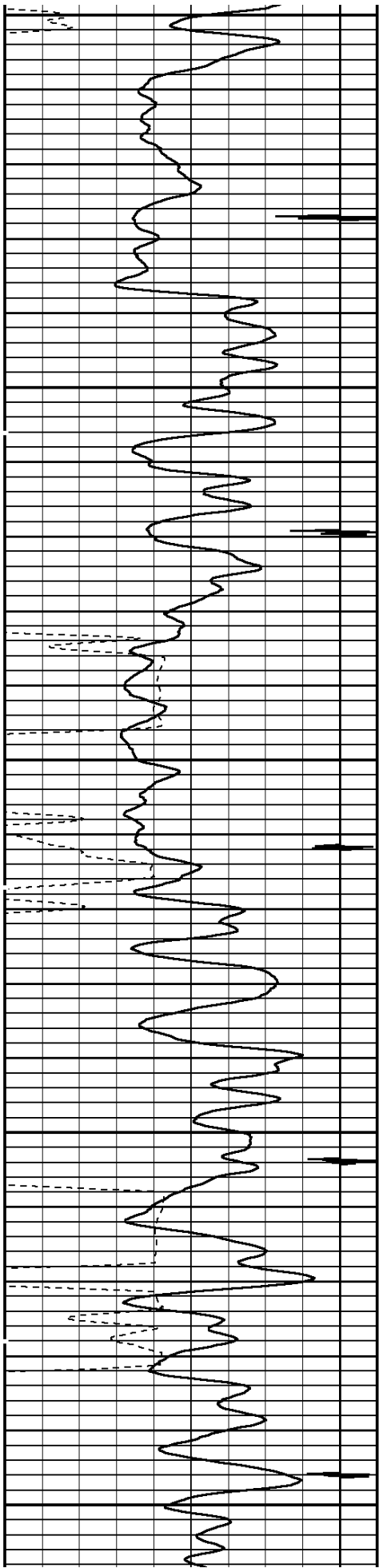




5700

5800

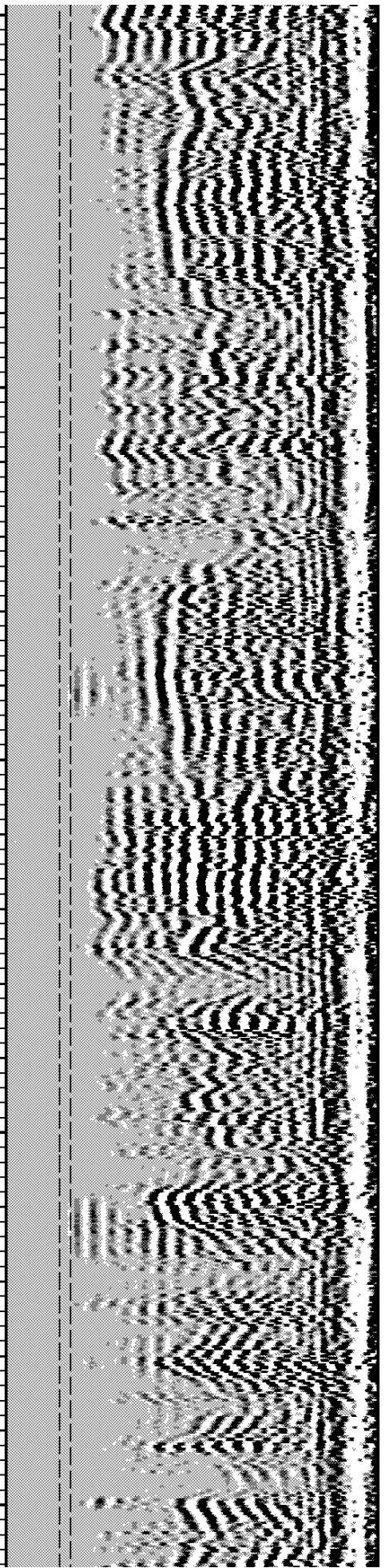
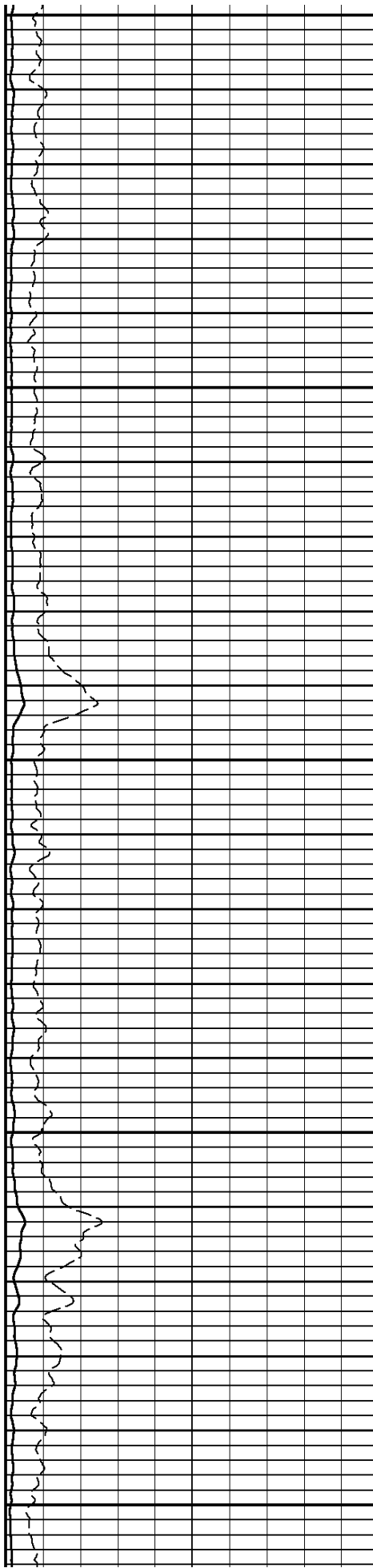


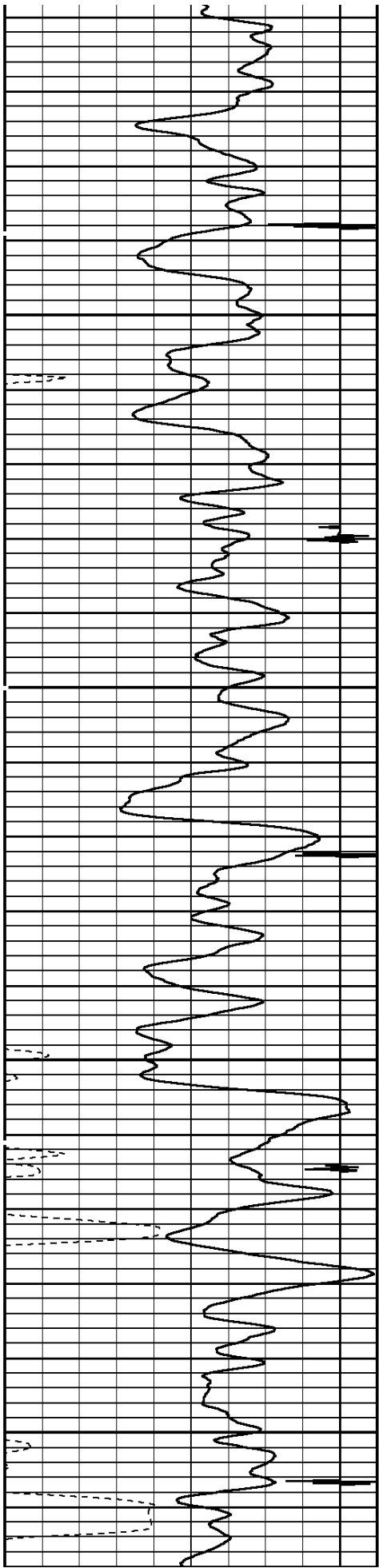


5900

6000

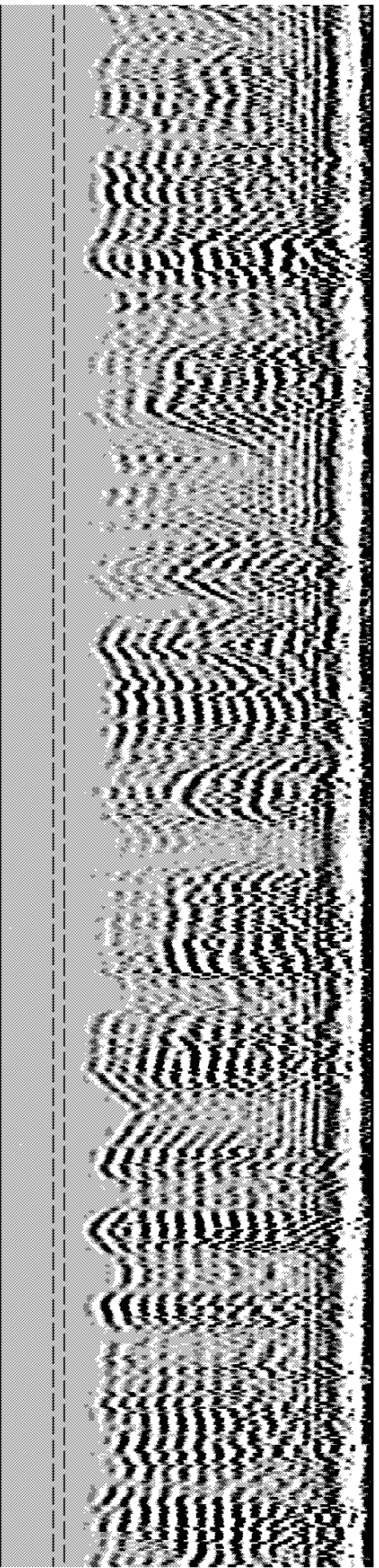
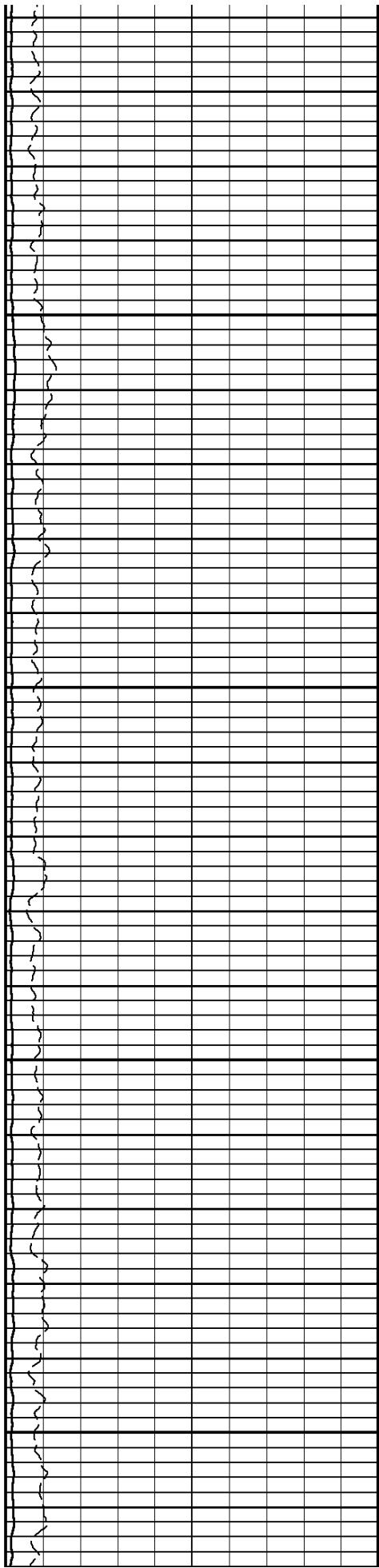
6100

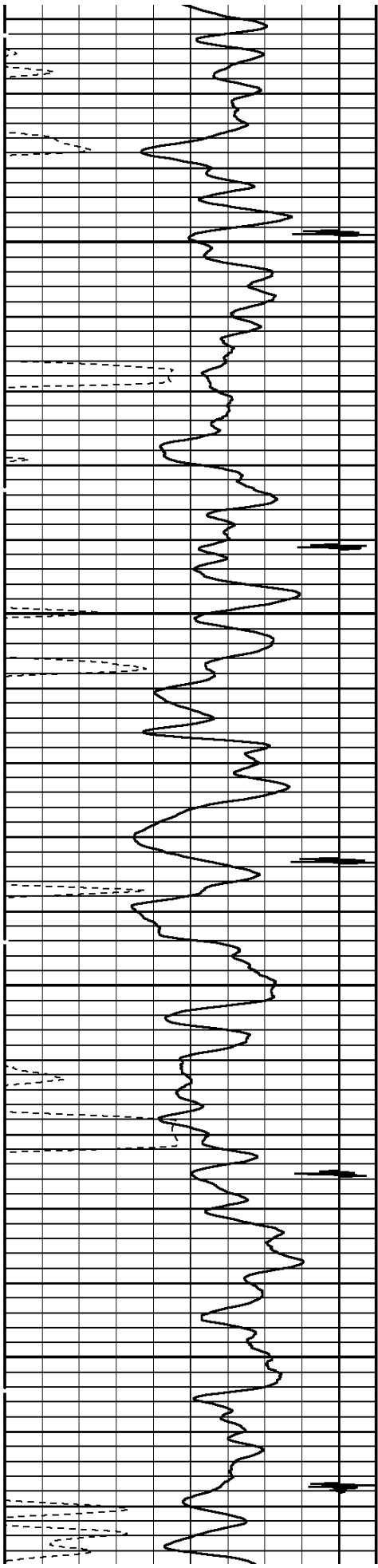




6200

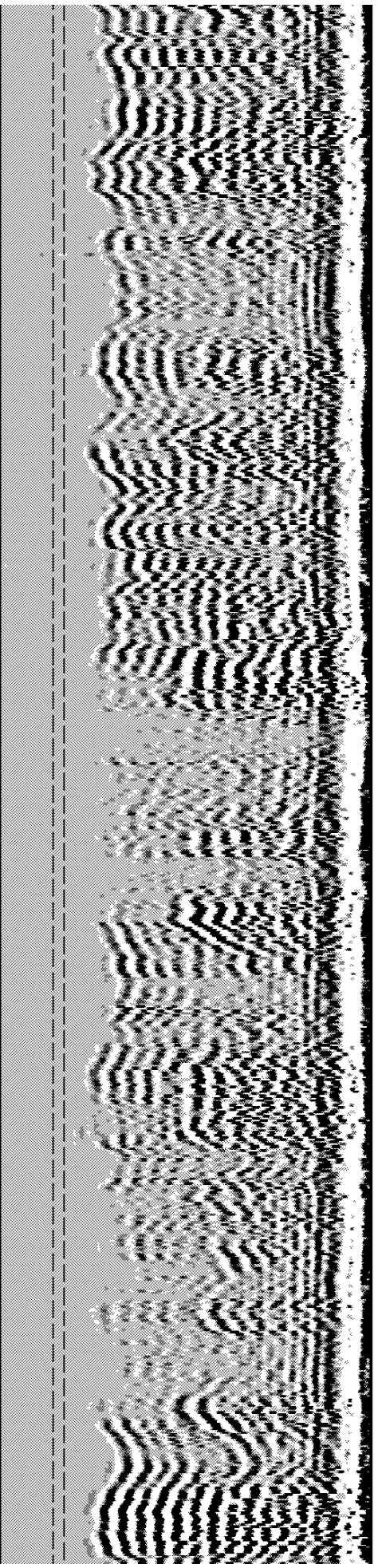
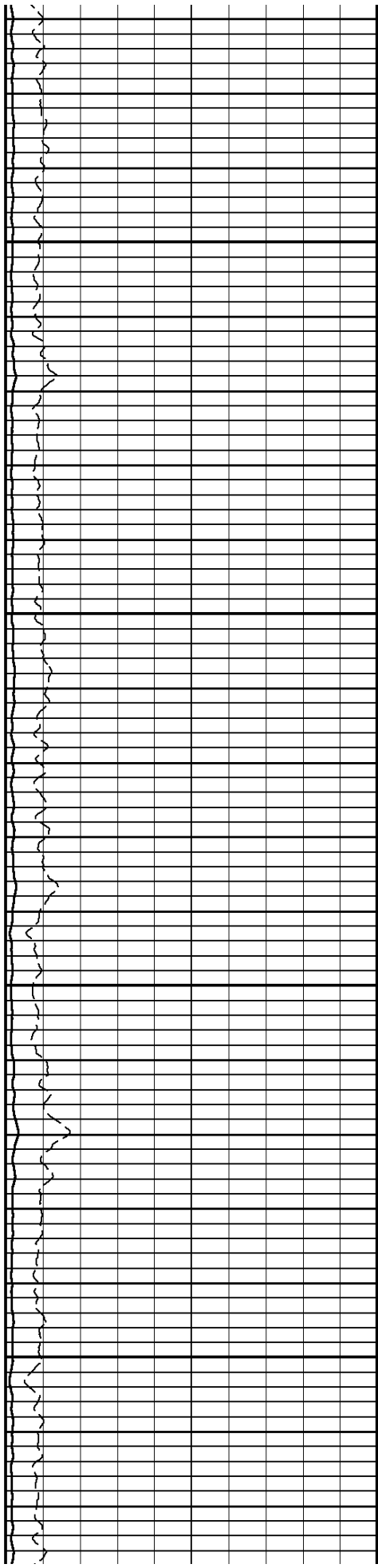
6300

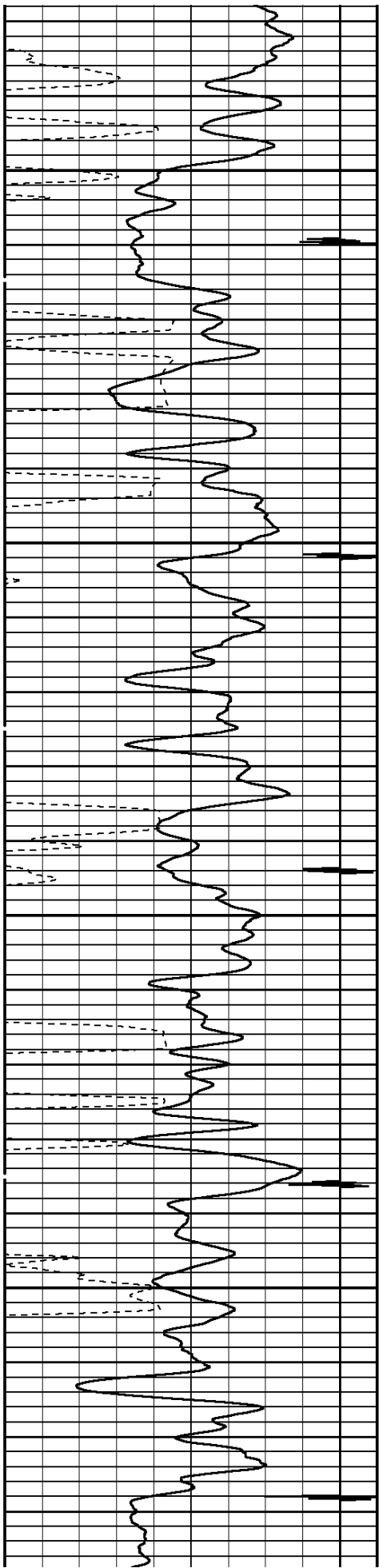




6400

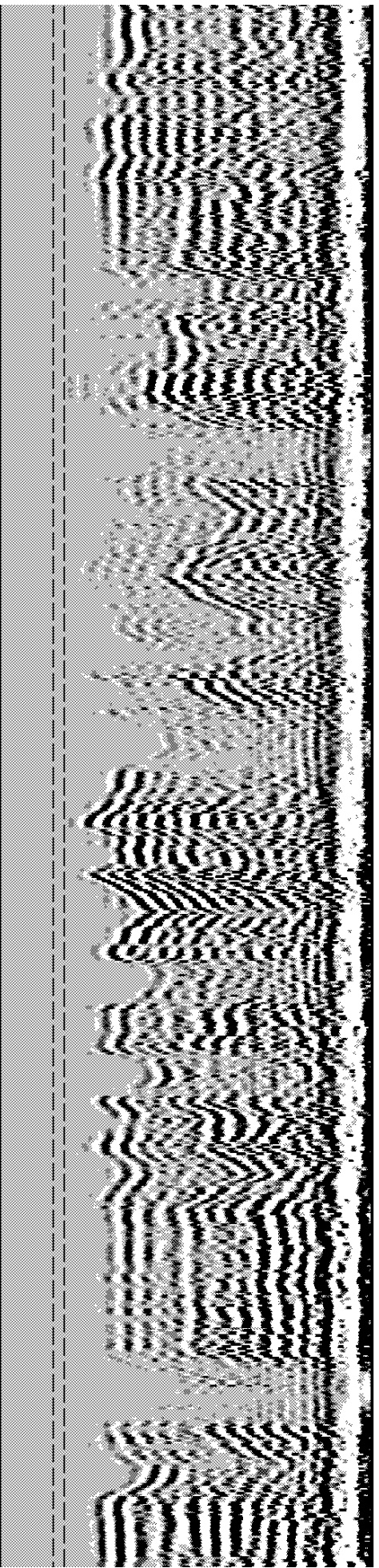
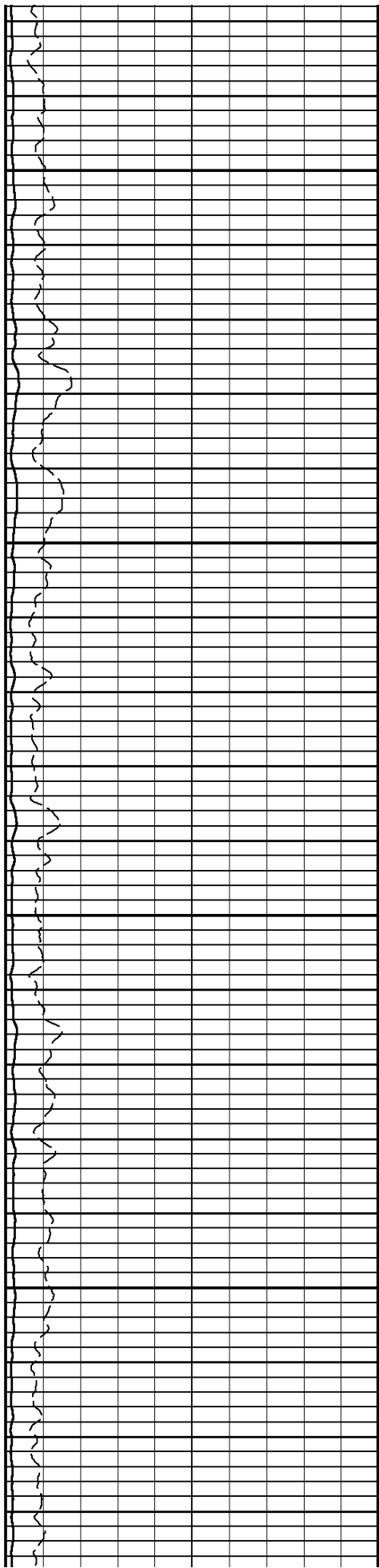
6500

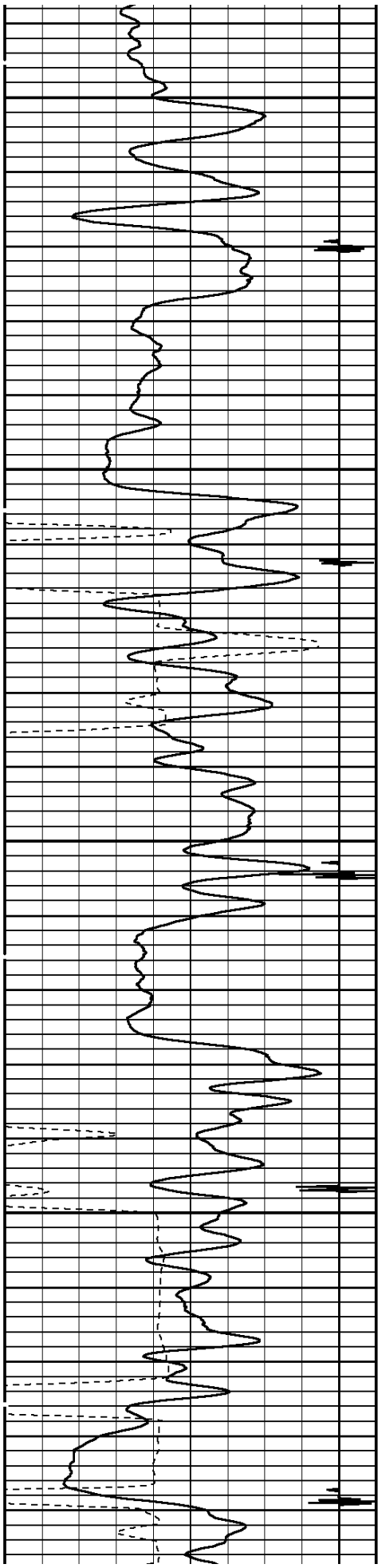




6600

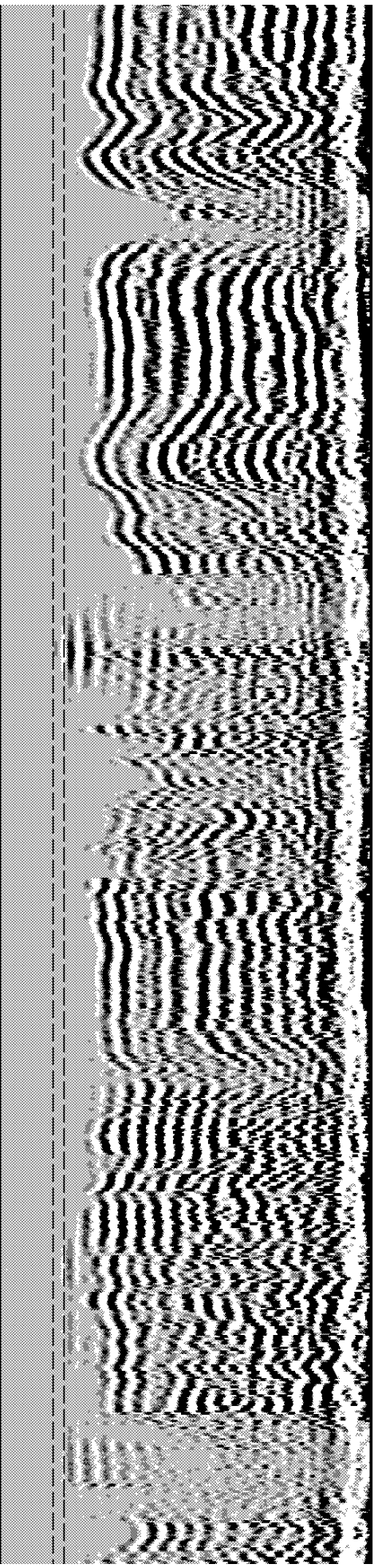
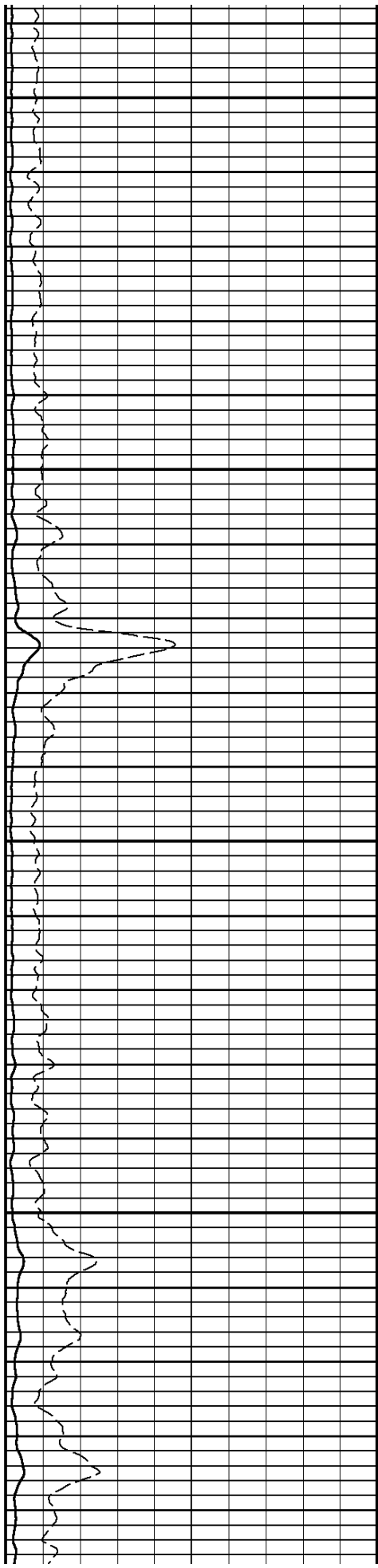
6700

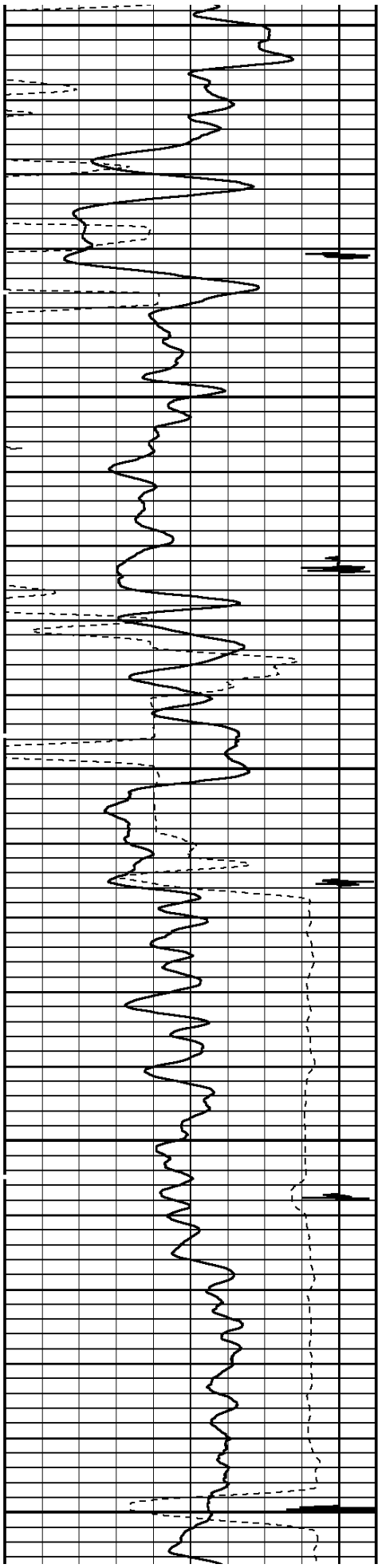




6800

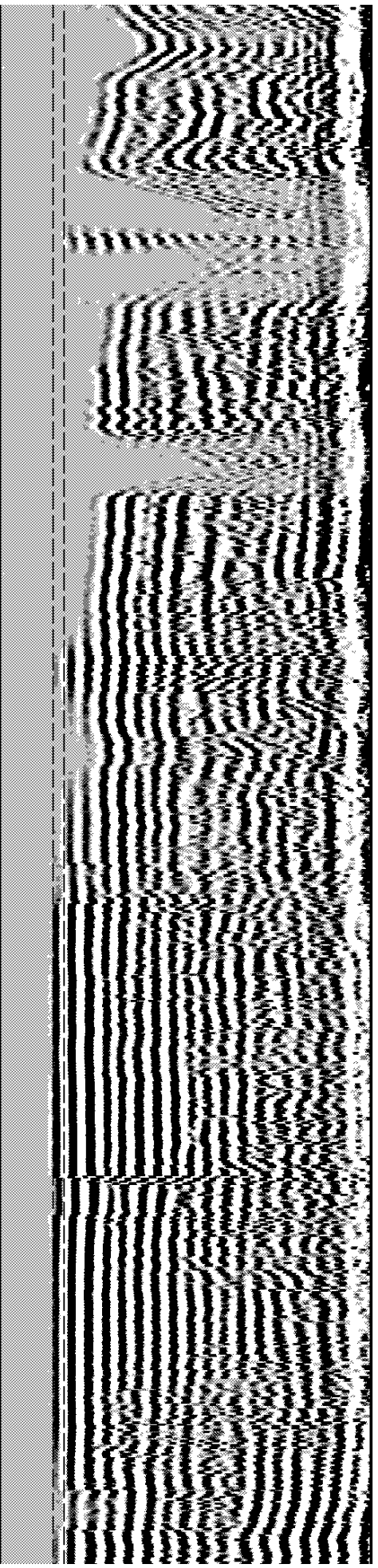
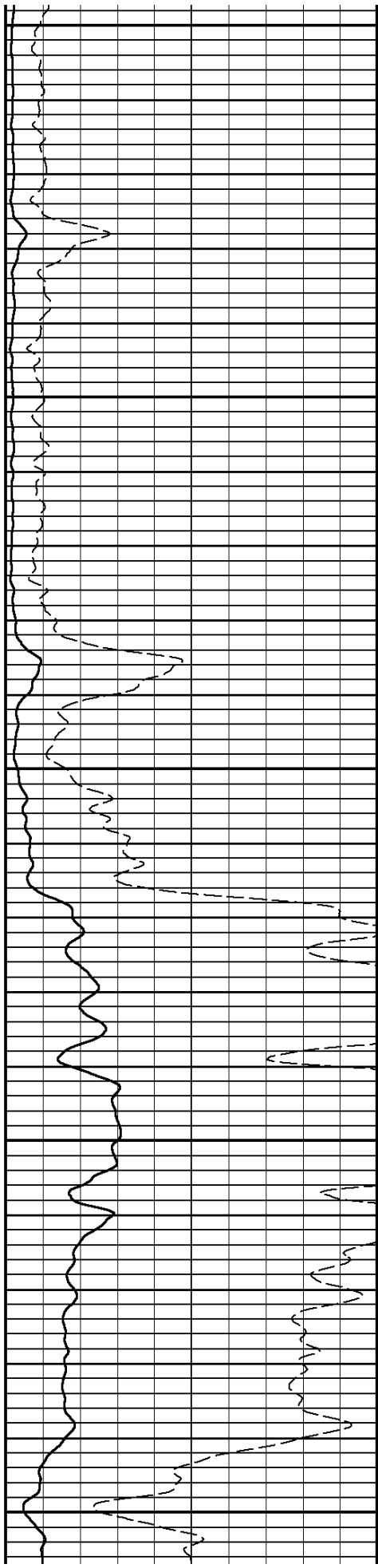
6900

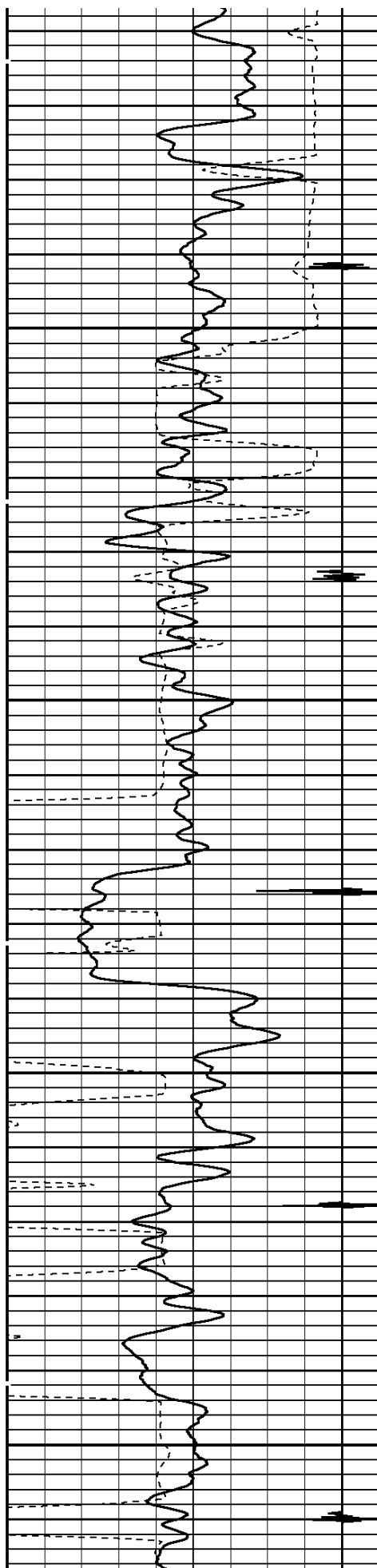




7000

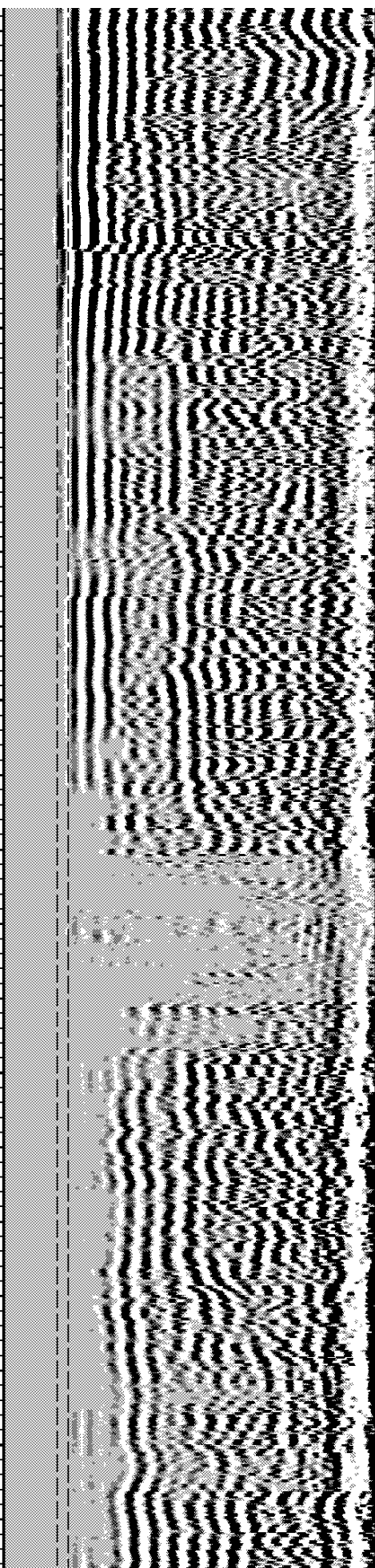
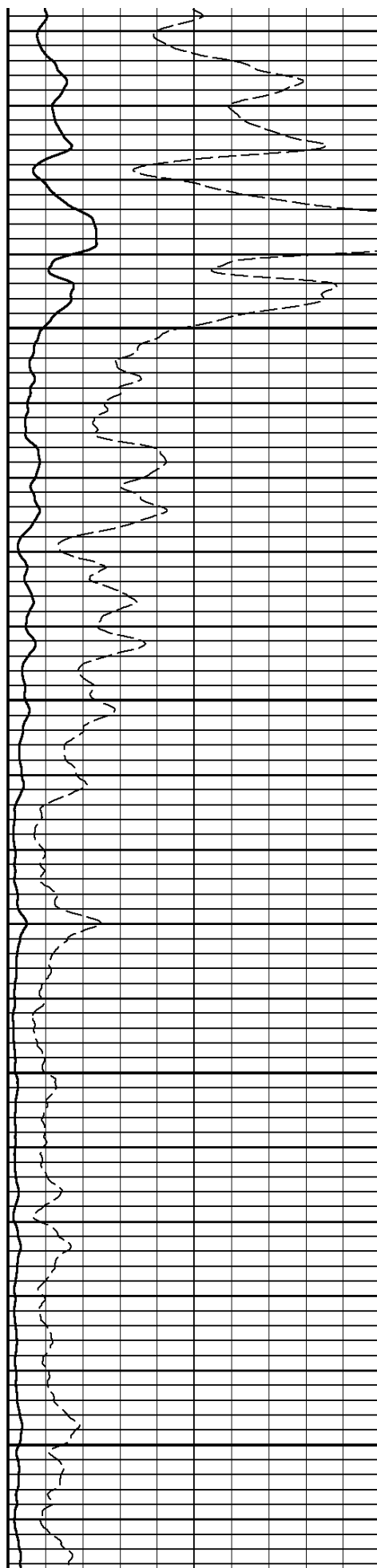
7100

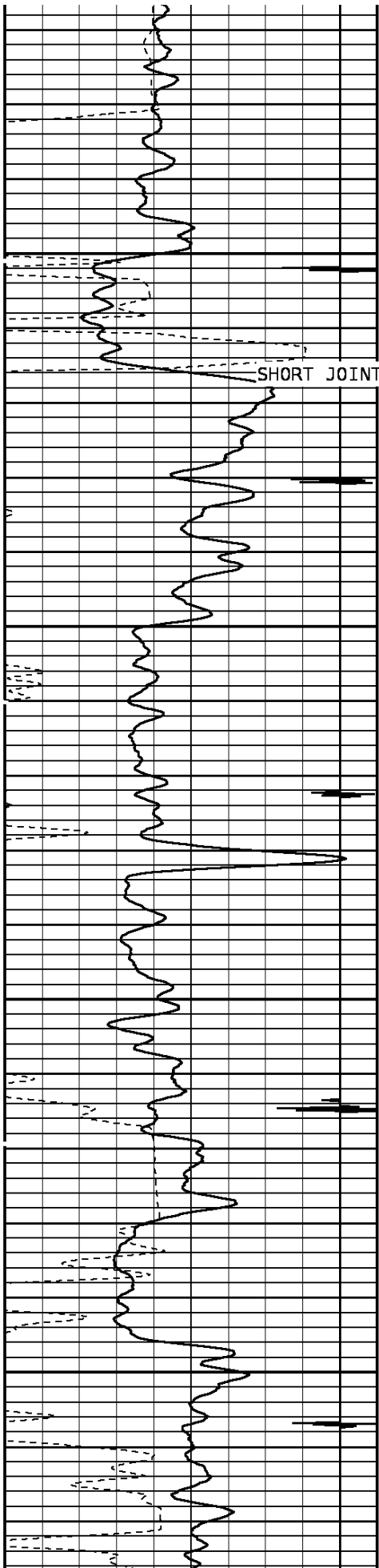




7200

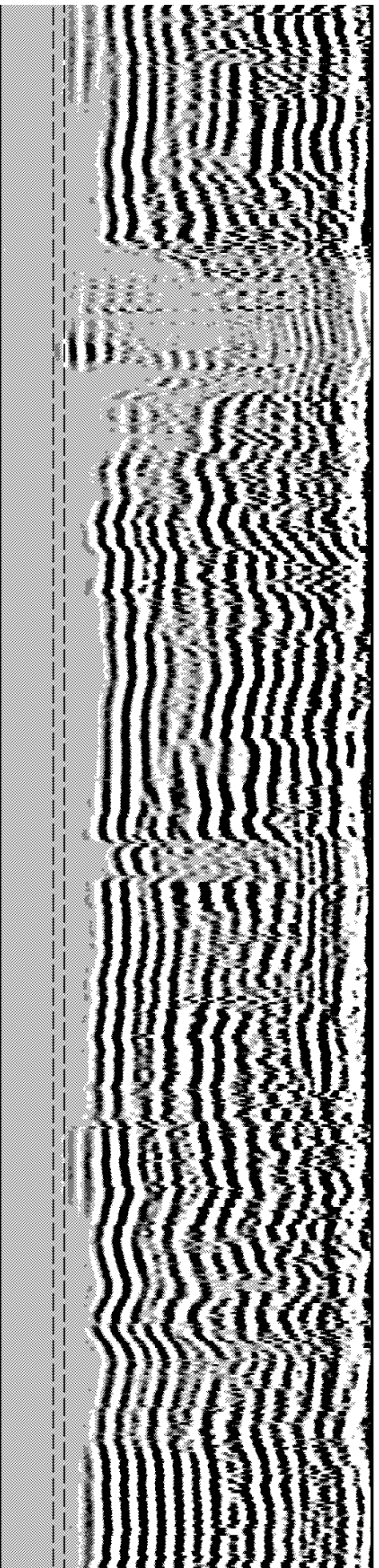
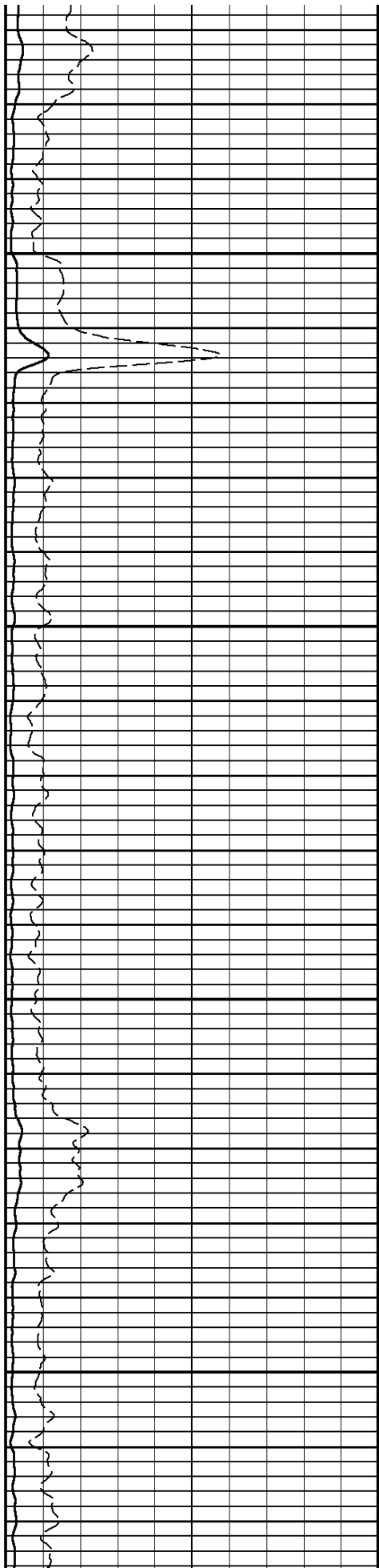
7300

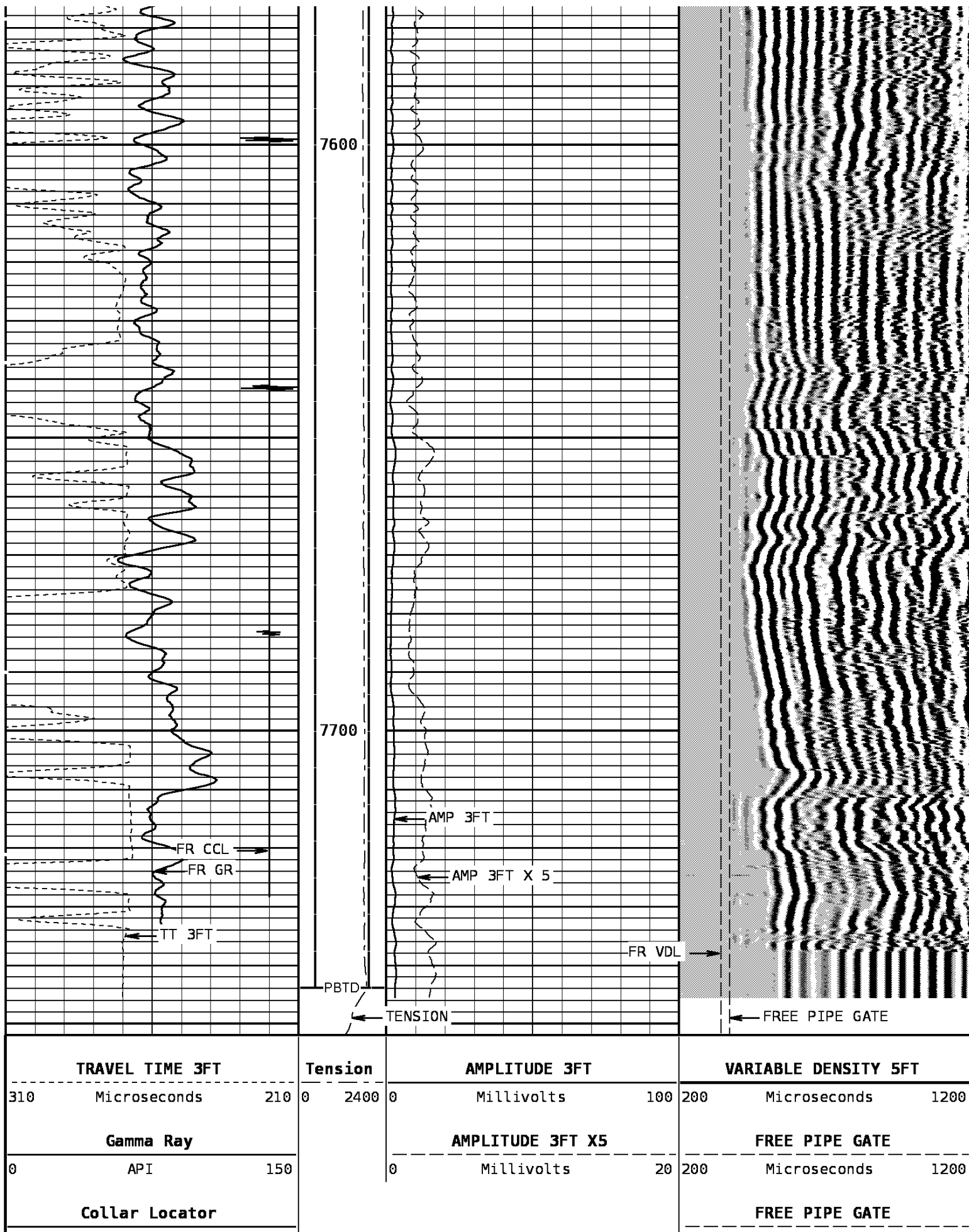




7400

7500





START DEPTH: 7752.0 DIRECTION: UP DATE: 01/13/2009 TIME: 17:30 MODE: ORIGINAL

156897 CBLMAIN

MAIN PASS

DEPTH SCALE: 5":100'

VERSION: 80214133R"

REMARKS

LOGGED WITH 0 PSI @ SURFACE

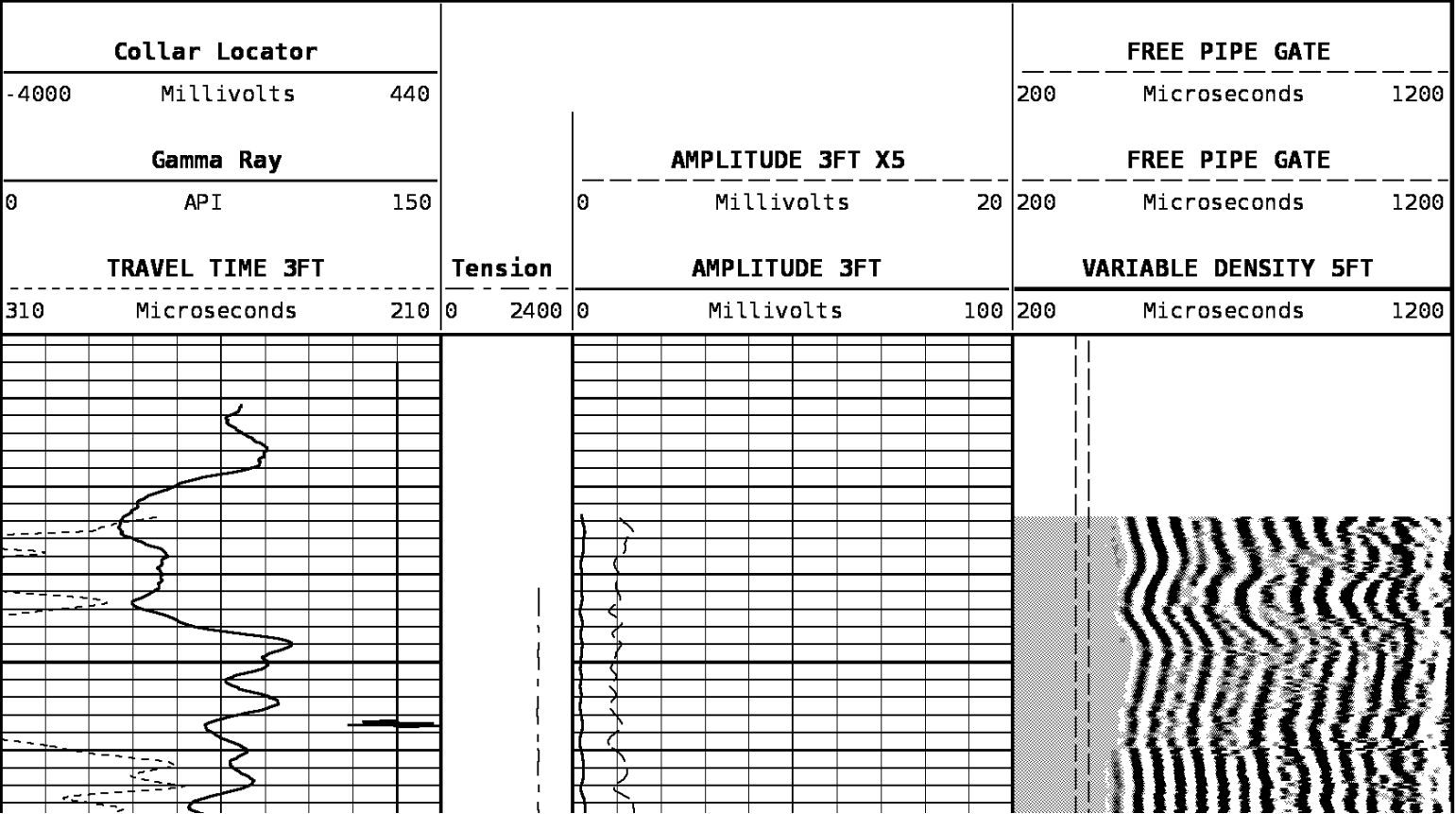
DEPTH SCALE: 5":100'

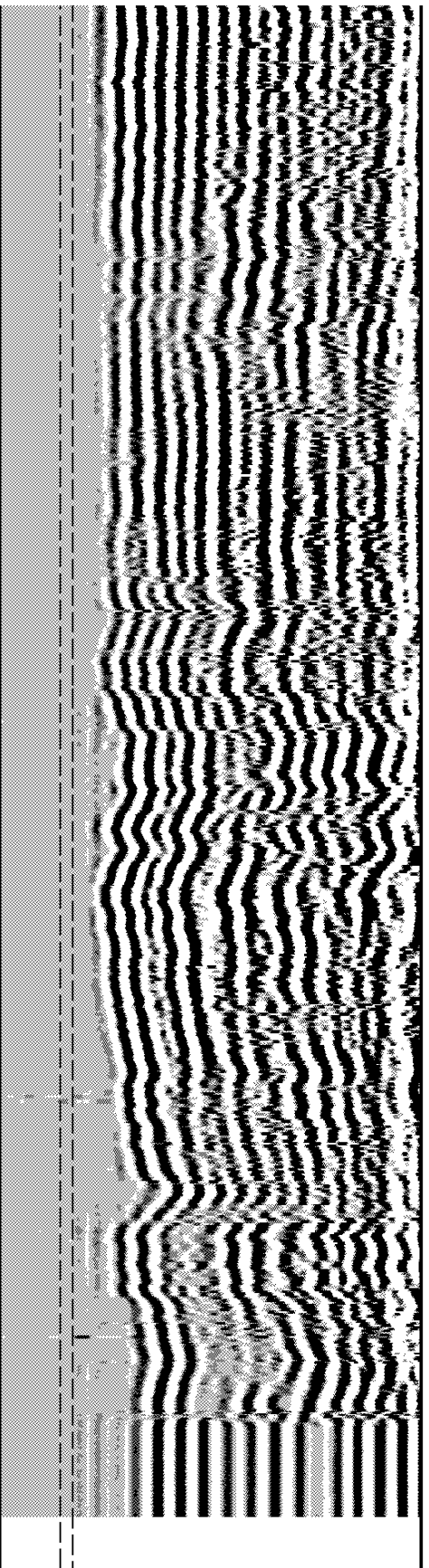
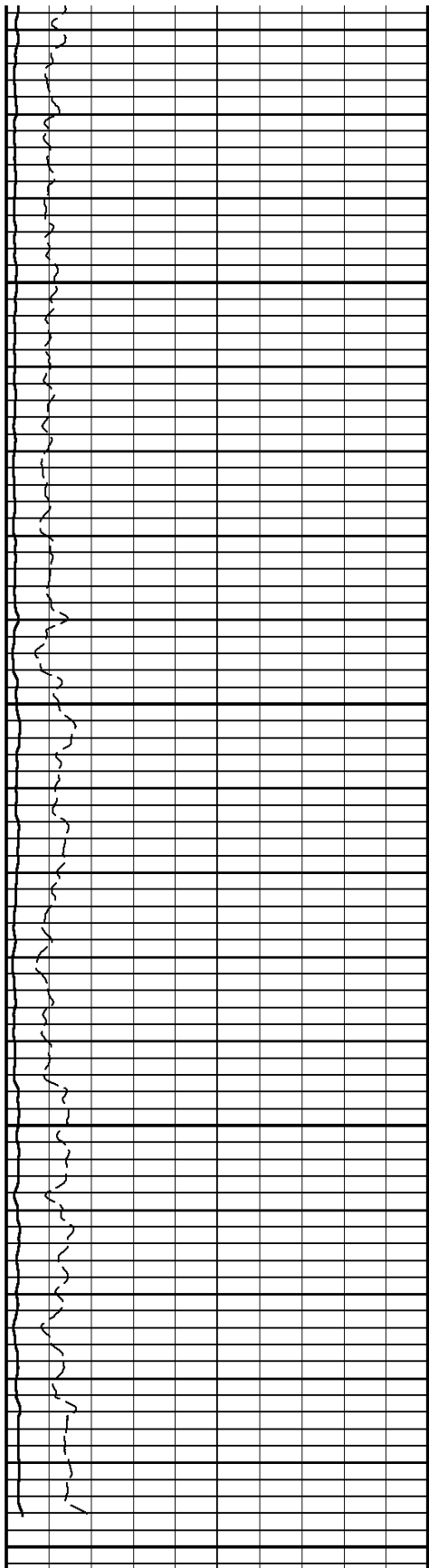
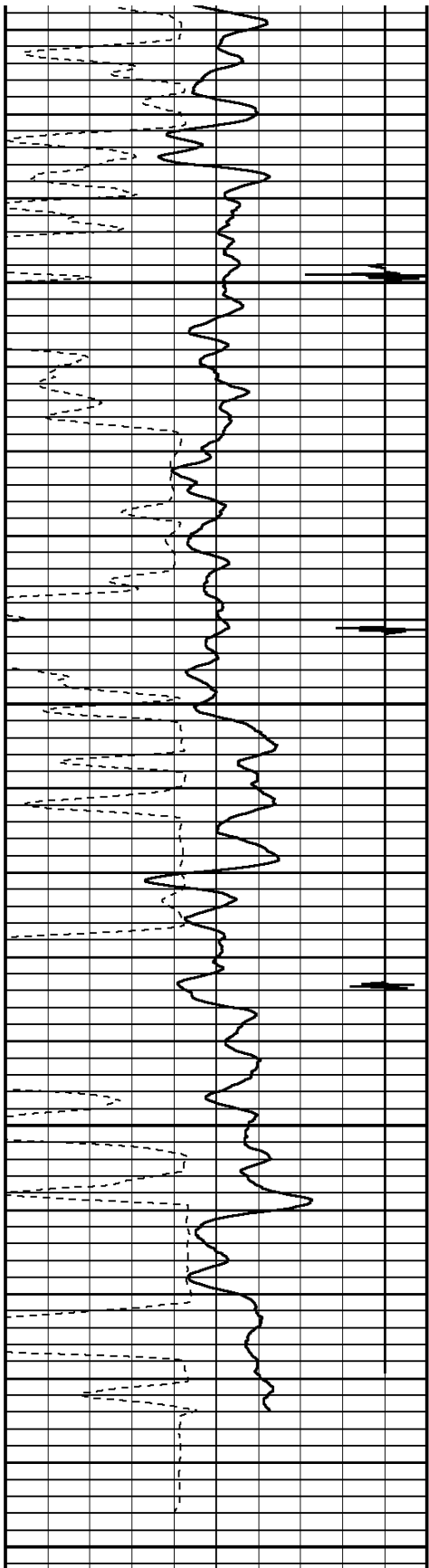
VERSION: 80214133R"

REPEAT PASS

156897 CBLREPEAT

FINISH DEPTH: 7513.0 Feet DIRECTION: UP DATE: 01/13/2009 TIME: 14:02 MODE: ORIGINAL





TRAVEL TIME 3FT		Tension	AMPLITUDE 3FT		VARIABLE DENSITY 5FT	
310	Microseconds		0	100	200	1200
Gamma Ray		API	AMPLITUDE 3FT X5		FREE PIPE GATE	
0	150		0	20	200	1200

Collar Locator			FREE PIPE GATE		
-4000	Millivolts	440	200	Microseconds	1200

START DEPTH: **7753.0** DIRECTION: **UP** DATE: **01/13/2009** TIME: **14:02** MODE: **ORIGINAL**

156897 CBLREPEAT

REPEAT PASS

DEPTH SCALE: **5":100'** VERSION: **80214133R"**

1 7/16 Adapter Head

Weight	2.2 LB.
Length	12 IN.
Max. Diameter	1.44 IN.

Total Stack Weight 208.0 LBS. in air
 Total Stack Length 25.34 FT.

Collar Locator

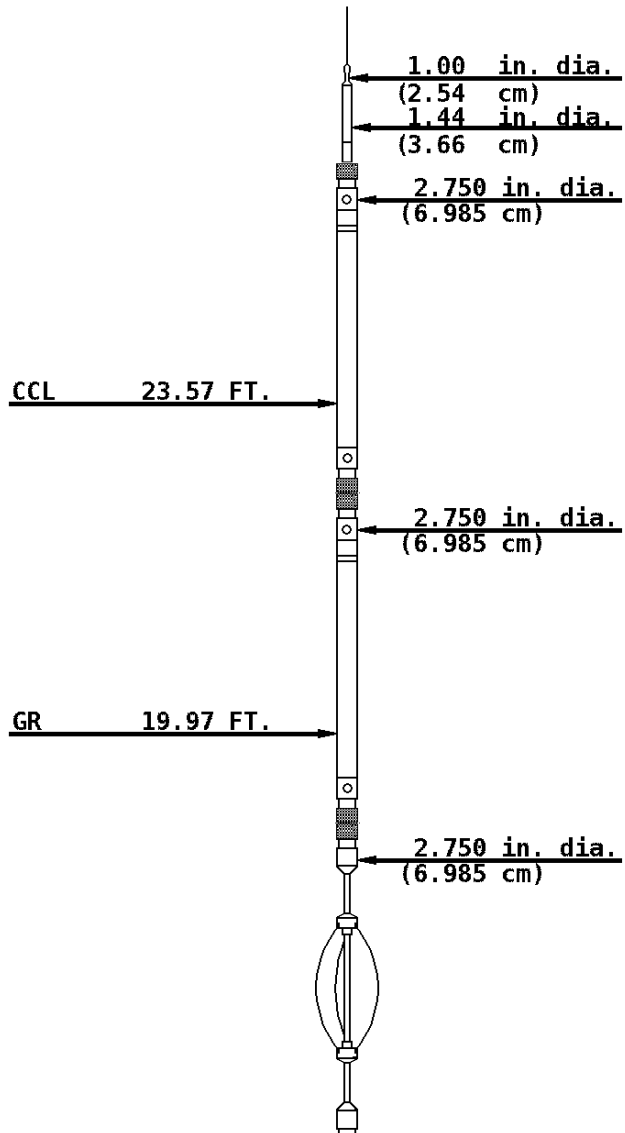
Weight	39.8 LBS.
Length	3.40 FT.
Max. Diameter	2.75 IN.

Slim Hole Gamma Ray

Weight	39.8 LBS.
Length	4.71 FT.
Max. Diameter	2.750 IN.

Slim Hole Centralizer

Weight	22 LBS.
Length	3.08 FT.
Max. Diameter	2.750 IN.



Sector Bond

Weight 89.2 LBS>
Length 10.32 FT.
Max. Diameter 2.750 IN.

SBT/CBL Tx 8.75 FT.

SBT Rx 7.77 FT.

3' Rx 7.28 FT.

5' Rx 6.28 FT.

2.750 in. dia.
(6.985 cm)

Slim Hole Centralizer

Weight 15.0 LBS.
Length 2.82 FT.
Max. Diameter 2.750 IN.

2.750 in. dia.
(6.985 cm)

Tool Zero

COMPANY BILL BARRETT CORPORATION

WELL JCJ 21A-21-692

FIELD MAMM CREEK

COUNTY GARFIELD

STATE COLORADO



Weatherford®