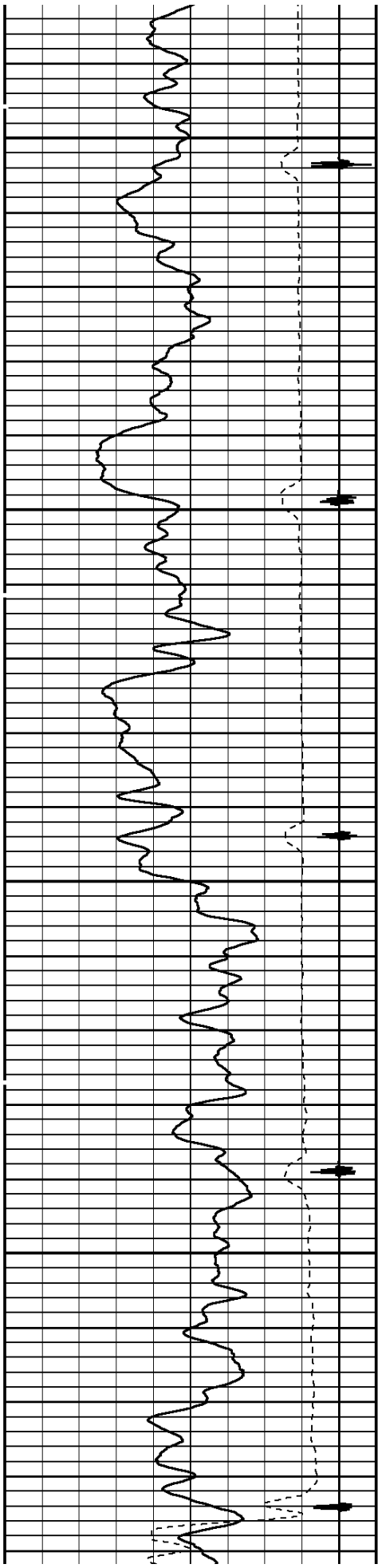


COMPANY BILL BARRETT CORPORATION						WELL JCY 11D-21-692	COUNTY GARFIELD STATE COLORADO
LOG MEASURED FROM K.B. 17 FT. ABOVE PERMANENT DATUM							
DATUM GROUND LEVEL ELEV. 5680'							
ELEV.:K.B. 5697' D.F. 5696' G.L. 5680'							
DATE 12-JAN-2009 API#: 05-045-16861							
RUN NO.							
DEPTH DRILLER							
DEPTH LOGGER							
BTM. LOG INTERVAL							
TOP LOG INTERVAL							
OPEN HOLE SIZE							
TYPE FLUID							
DENS. VISC.							
MAX. REC. TEMP., °F							
EST. CEMENT TOP							
TIME WELL READY							
TIME LOGGER ON BTM.							
EQUIP. NO.							
LOCATION							
RECORDED BY							
WITNESSED BY							
BOREHOLE RECORD TUBING RECORD							
RUN NO.	BIT	FROM	TO	SIZE	WGHT.	FROM TO	
CASING RECORD	SIZE	WT./FT	GRADE	TYPE JOINT	TOP	BOTTOM	
SURFACE STRING							
PROD. STRING	9.625"	36#	I-80	SURE	850'	8000'	
LINER							
SEE REMARKS							

All interpretations of log data are opinions based on inferences from electrical or other measurements. We do not guarantee the accuracy or correctness of any interpretation or recommendation and we shall not be liable or responsible for any loss, cost, damages or expenses incurred or sustained by anyone resulting from any interpretation or recommendation made by any of our employees or agents.

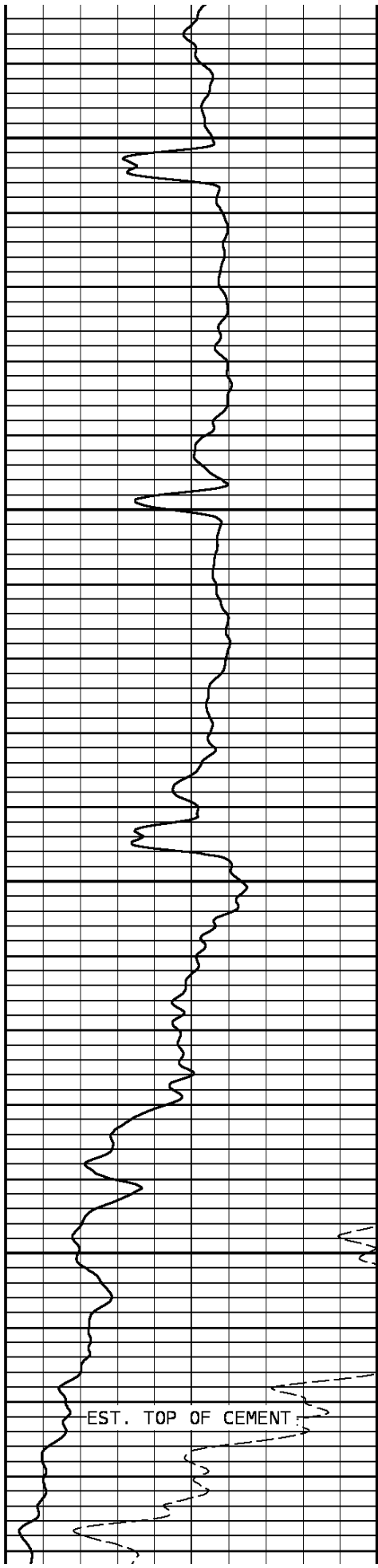
REMARKS		Rig: CRANE #15062		Service Order # 156891	
LOG WAS CORRELATED 0.0' TO WEATHERFORD COMPACT TRIPLE COMBO LOG DATED 20-OCT-08					
SHORT JOINTS WERE FOUND @ 5730'-5761' AND 7517'-7545'.					
EST. TOP OF CEMENT WAS FOUND @ 3574'. LOG WAS DEPTH ADJUSTED TO MATCH THE ABOVE					
MENTIONED OPEN HOLE LOG. WELL WAS LOGGED WITH 0 PSI @ SURFACE. Prints: 4					
YOUR CREW TODAY IS: JOHN YANC AND PAUL KRUGER.					
THANK YOU FOR CHOOSING WEATHERFORD WIRELINE, GRAND JUNCTION, CO. 970-263-8501.					
		EQUIPMENT DATA			
Bit Size	7.875"	Run No.	Tool Type	Tool No.	Other
Well Status	NEW DRILL	ONE	CTBA	172	
Surface Pressure		ONE	GRBA	172	
Shut In	Flowing	ONE	CENB	257	
0 PSI	NO	ONE	SBTA	339	
		ONE	CENC	210	

REMARKS						
<div style="display: flex; justify-content: space-between;"> <div>LOGGED WITH 0 PSI @ SURFACE</div> <div>DEPTH SCALE: 5":100'</div> <div>VERSION: 80214133R"</div> </div>						
MAIN PASS						
156891 CBLMAIN						
<div style="display: flex; justify-content: space-between;"> <div>FINISH DEPTH: 3300.1 Feet</div> <div>DIRECTION: UP</div> <div>DATE: 01/12/2009</div> <div>TIME: 10:51</div> <div>MODE: ORIGINAL</div> </div>						
Collar Locator				FREE PIPE GATE		
-4000	Millivolts			440	200	Microseconds
Gamma Ray		AMPLITUDE 3FT X5		FREE PIPE GATE		
0	API	150	0	Millivolts	20	
TRAVEL TIME 3FT		Tension	AMPLITUDE 3FT		VARIABLE DENSITY 5FT	
310	Microseconds	210	0	Millivolts	100	
		0	2300	200	Microseconds	1200

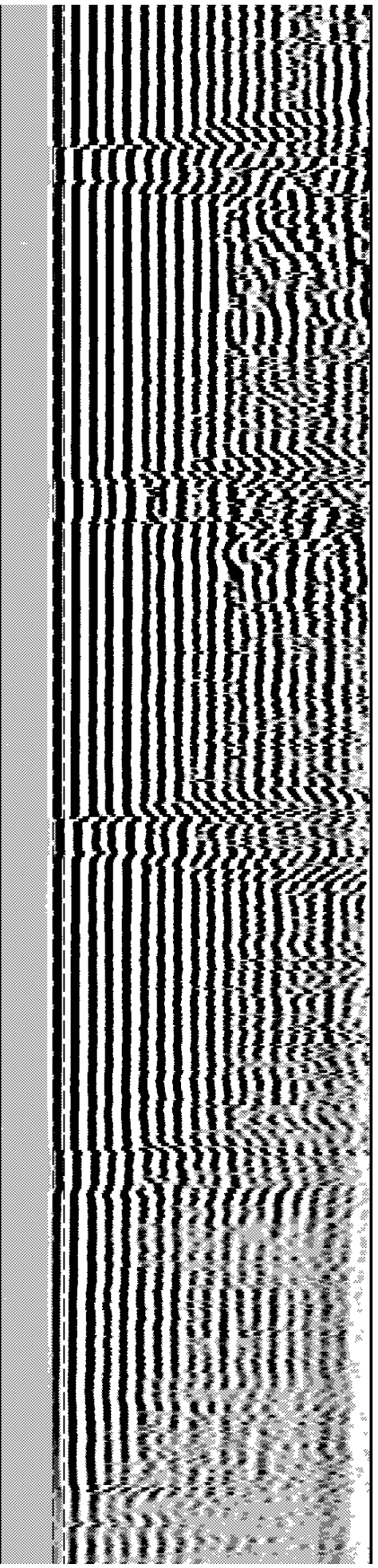


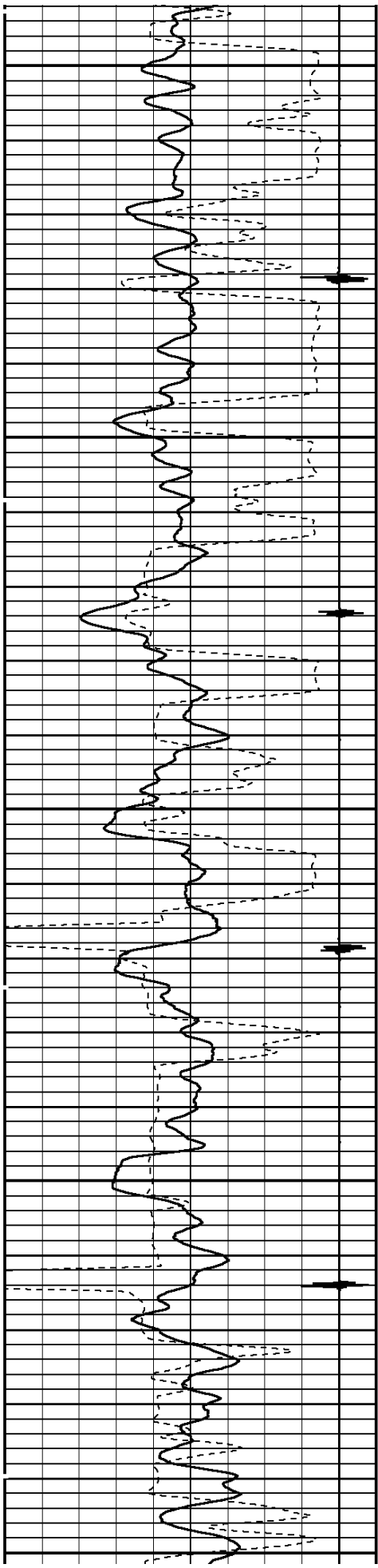
3400

3500



EST. TOP OF CEMENT

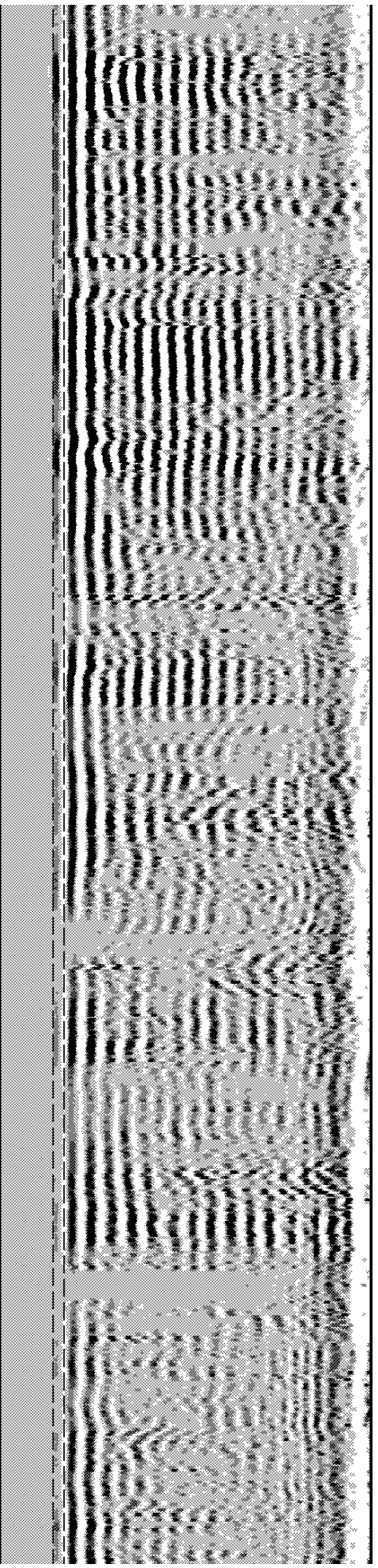
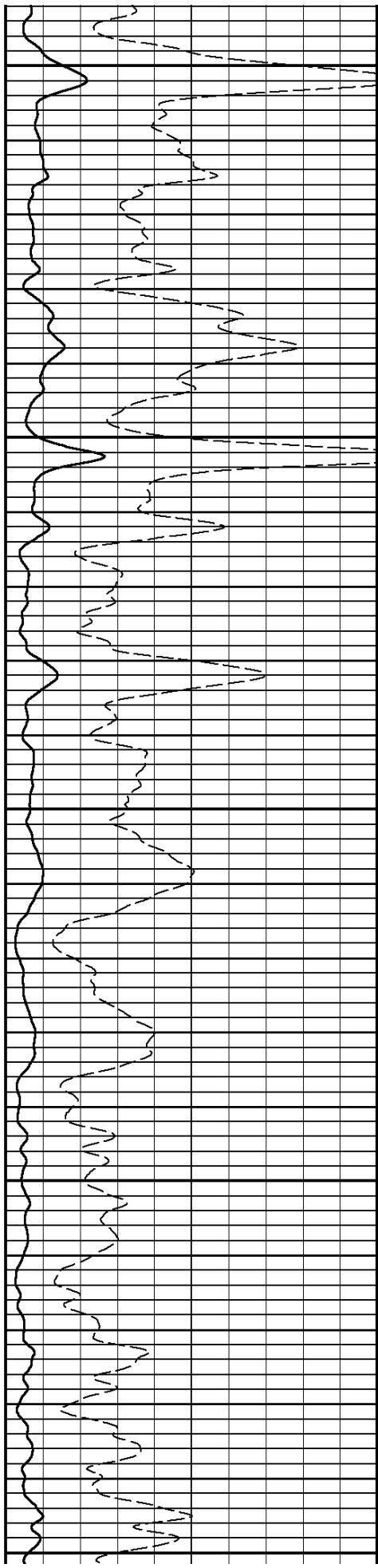


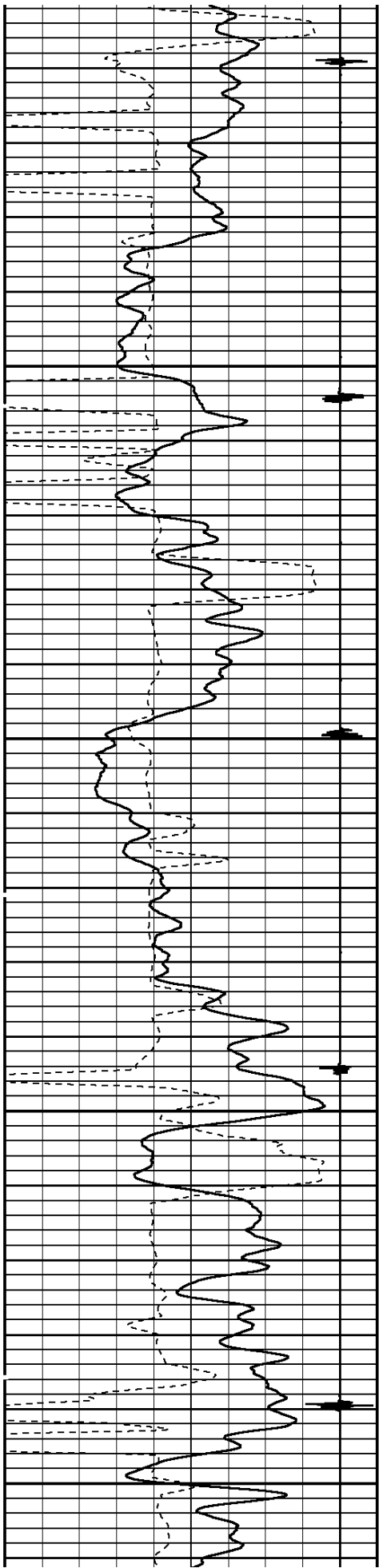


3600

3700

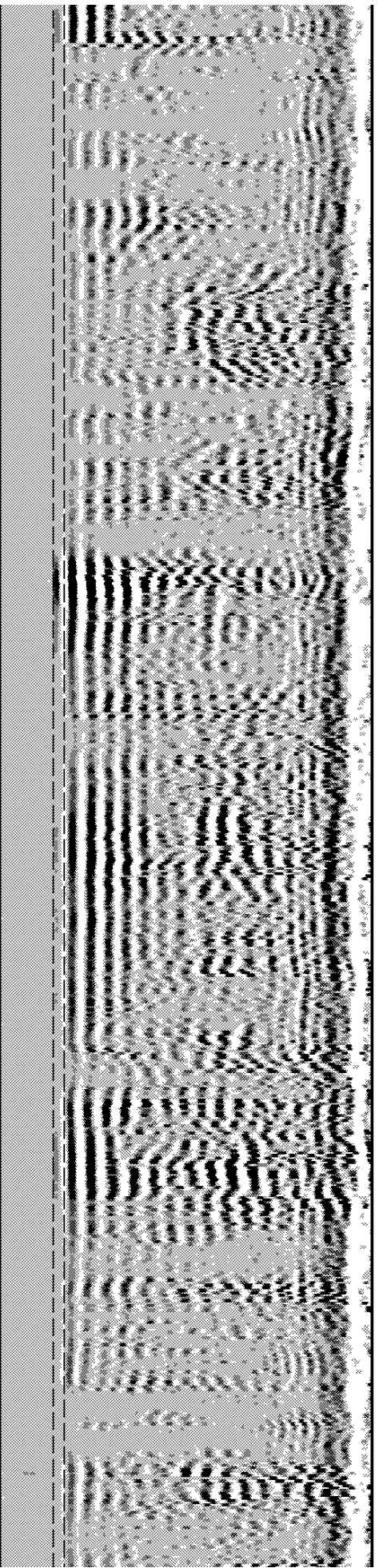
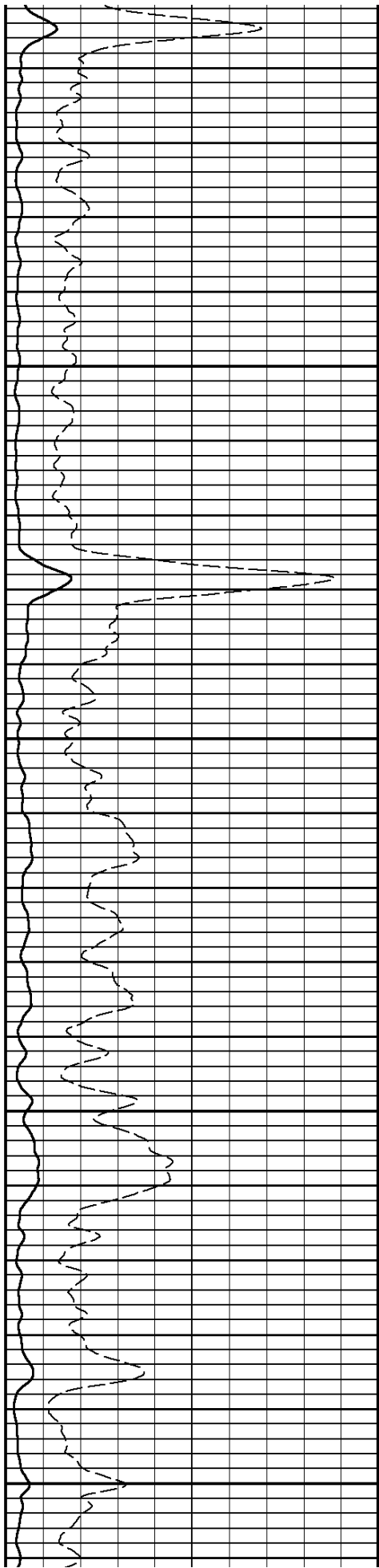
3800

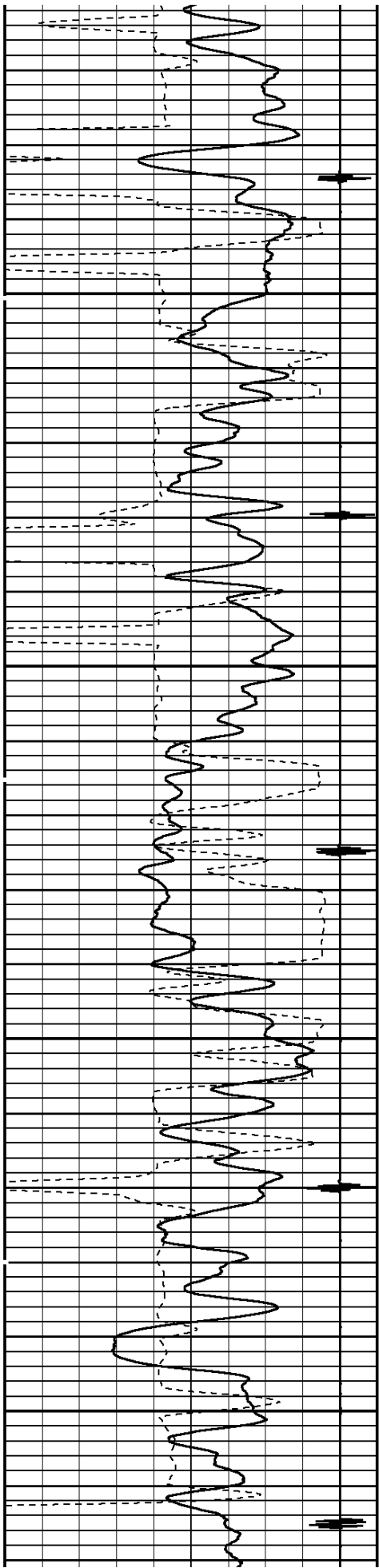




3900

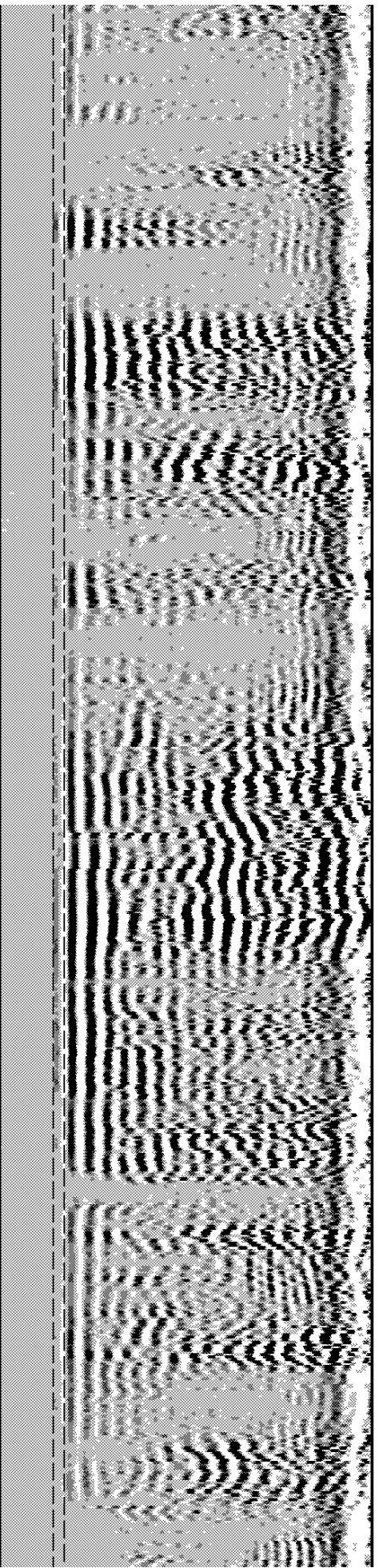
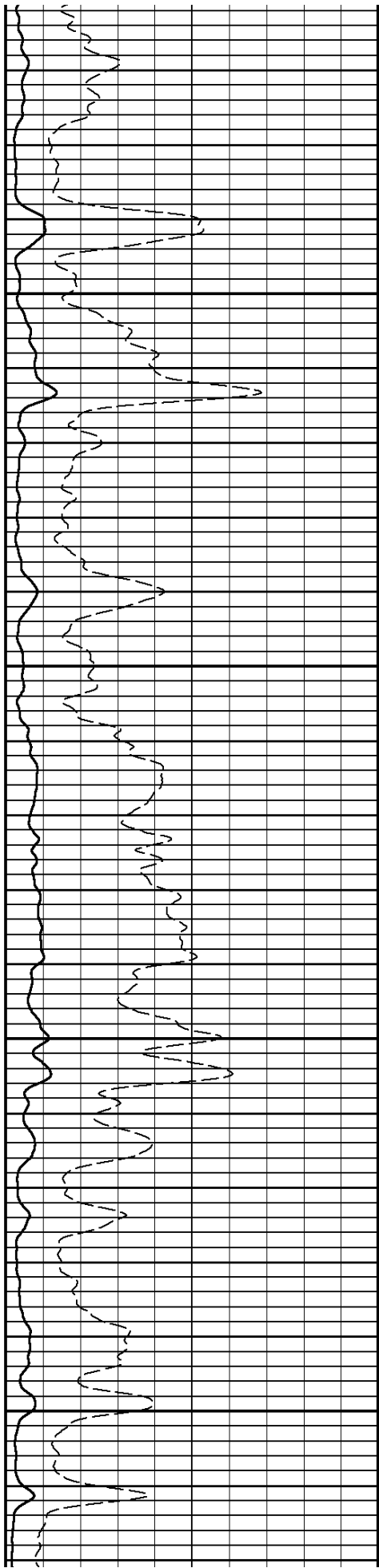
4000

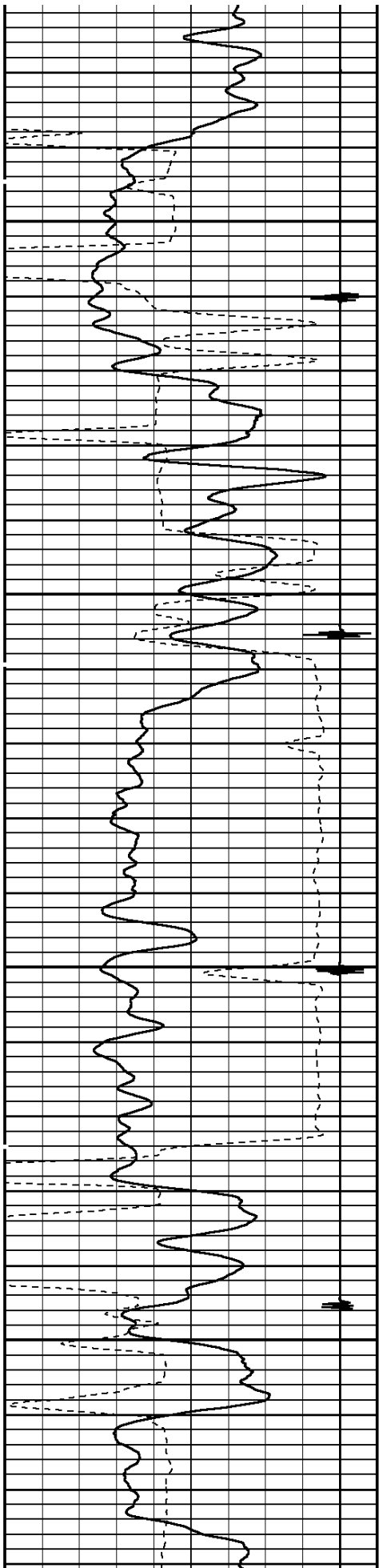




4100

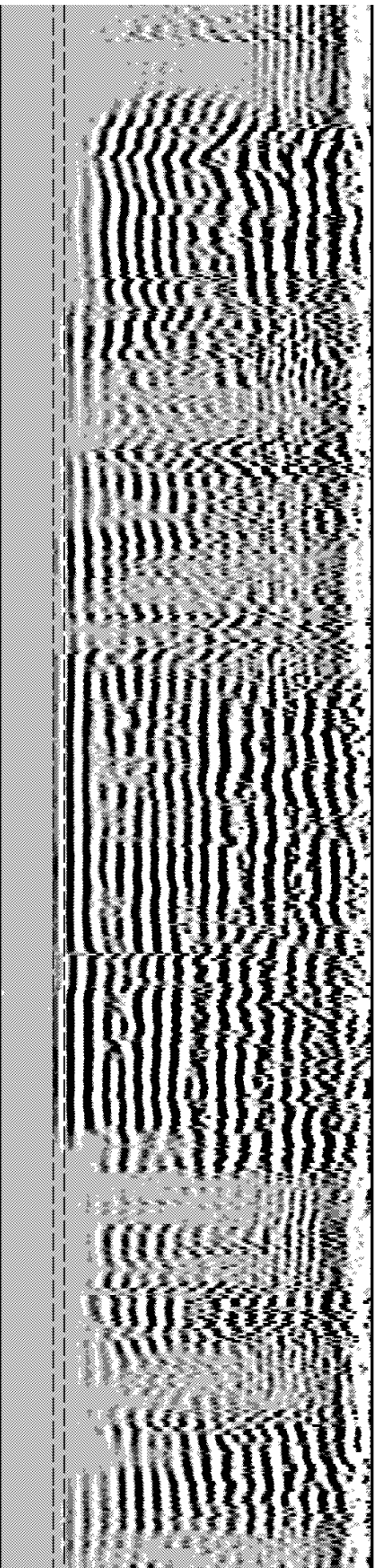
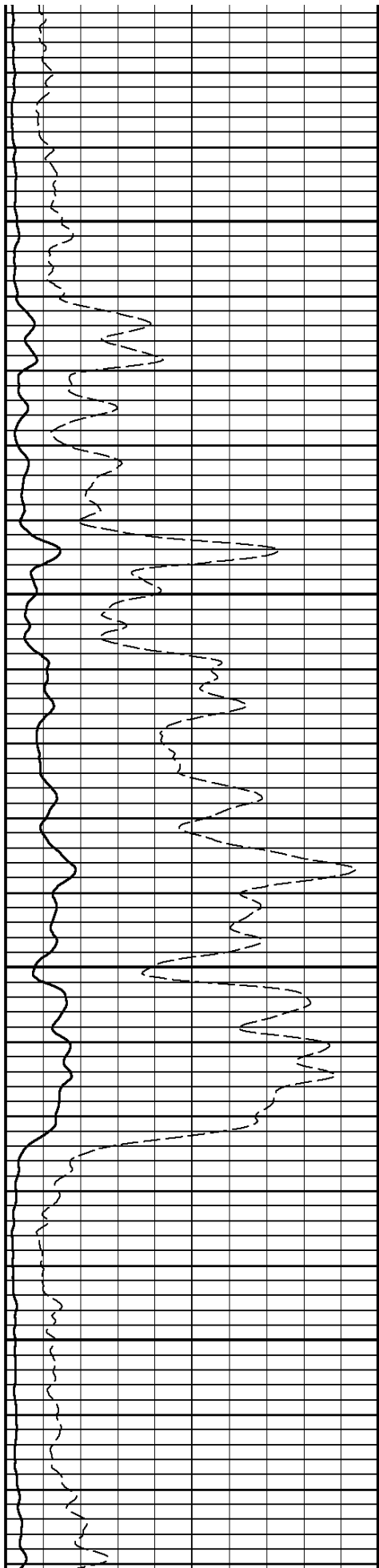
4200

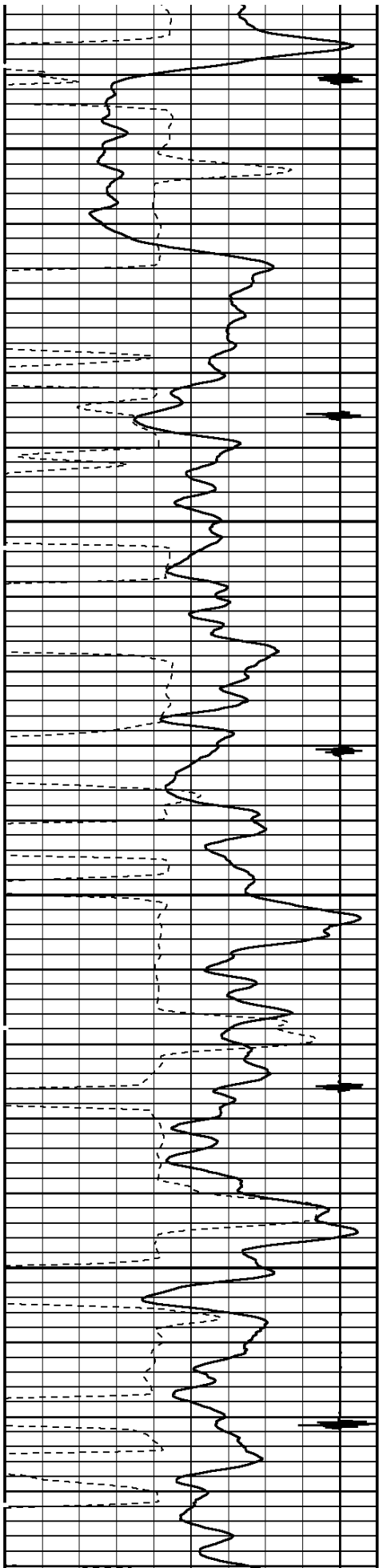




4300

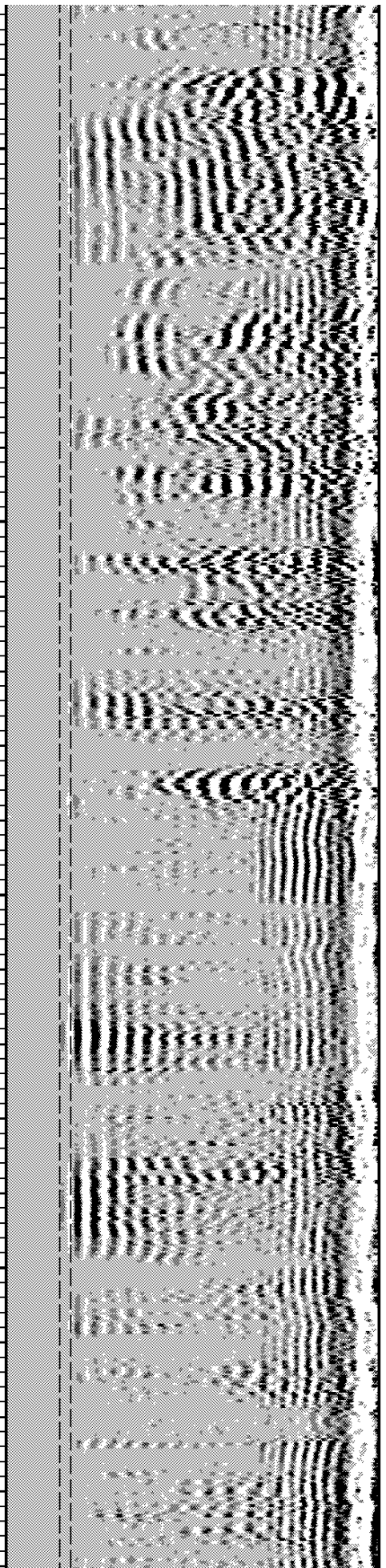
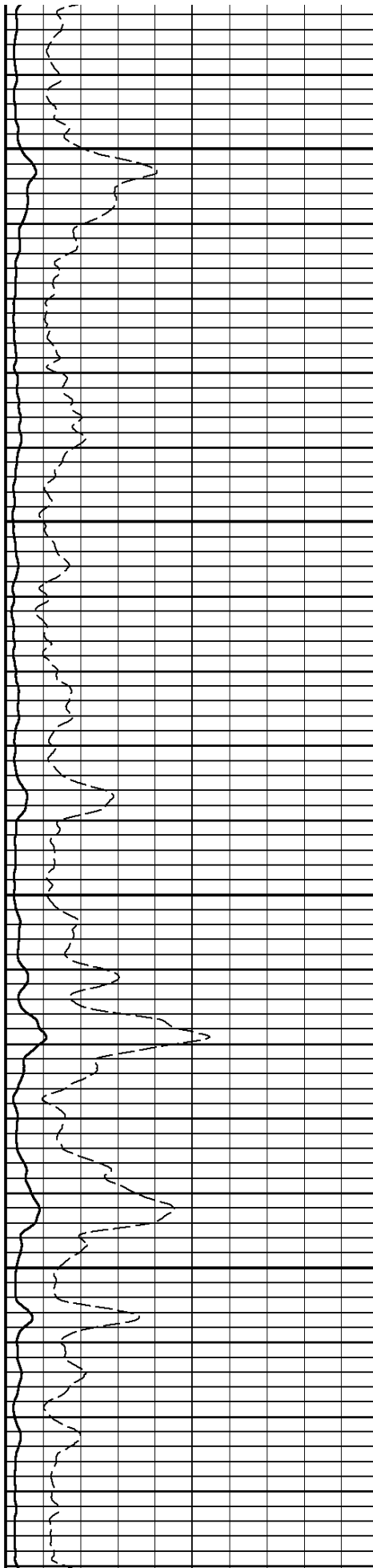
4400

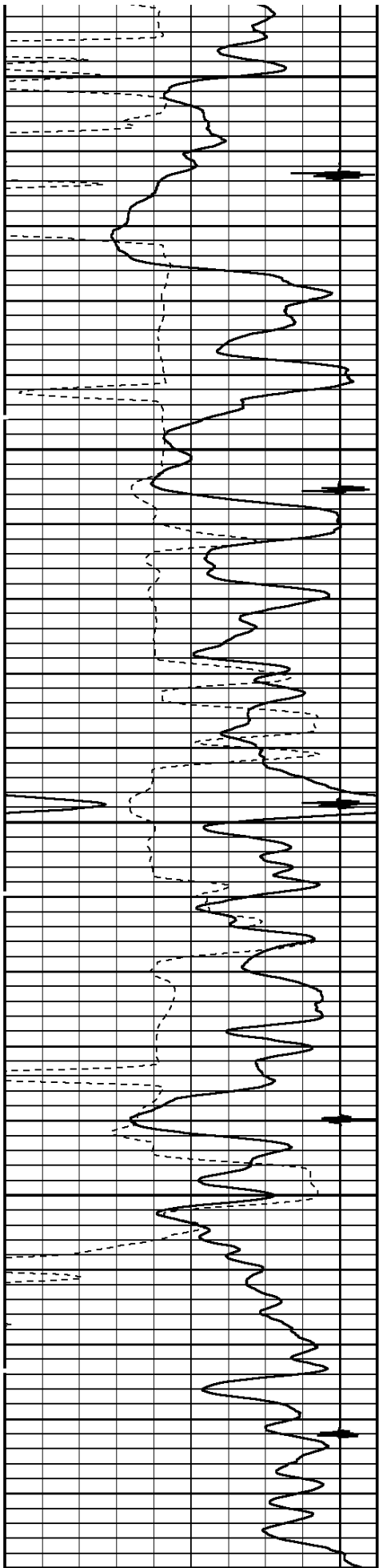




4500

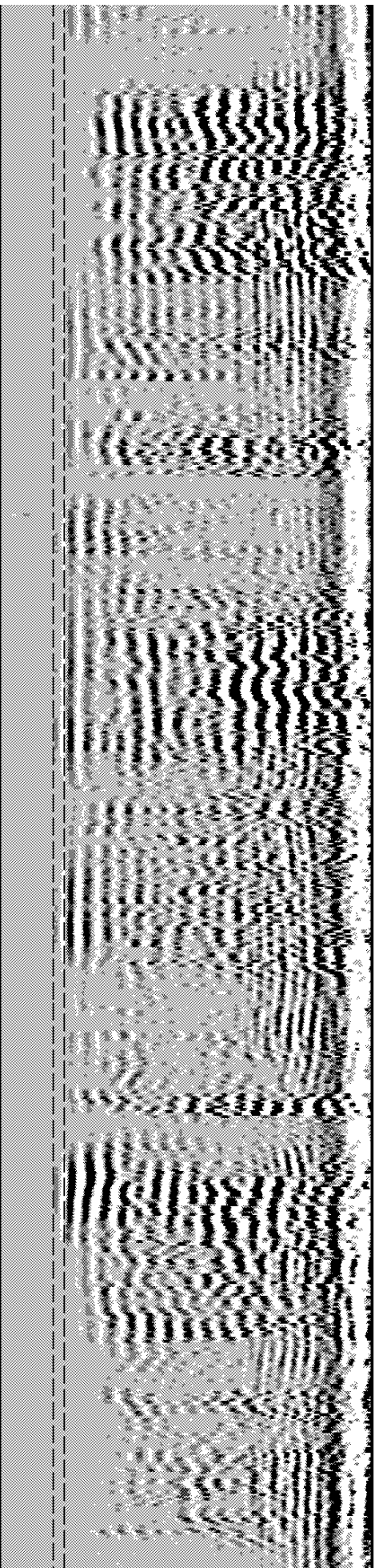
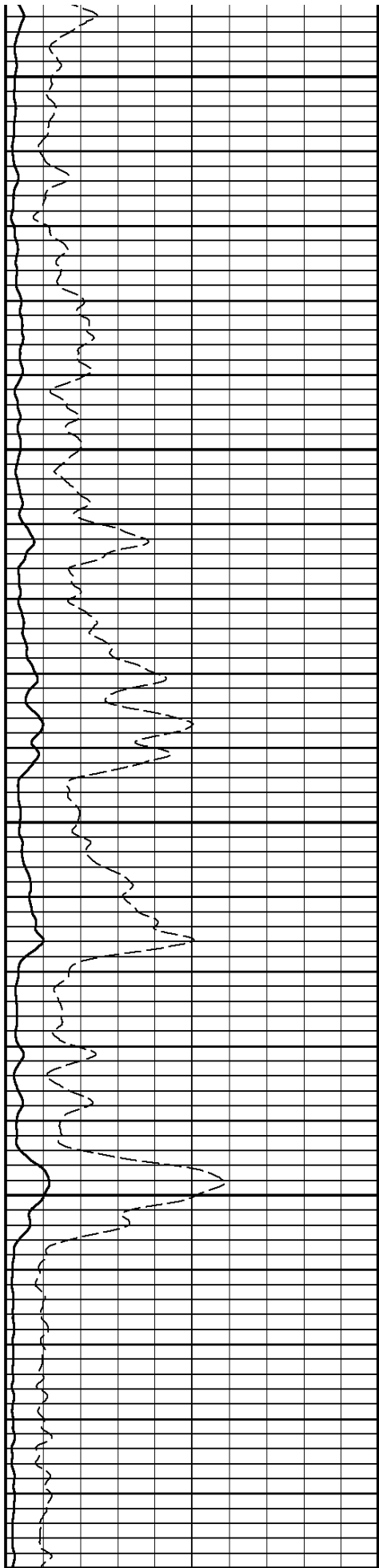
4600

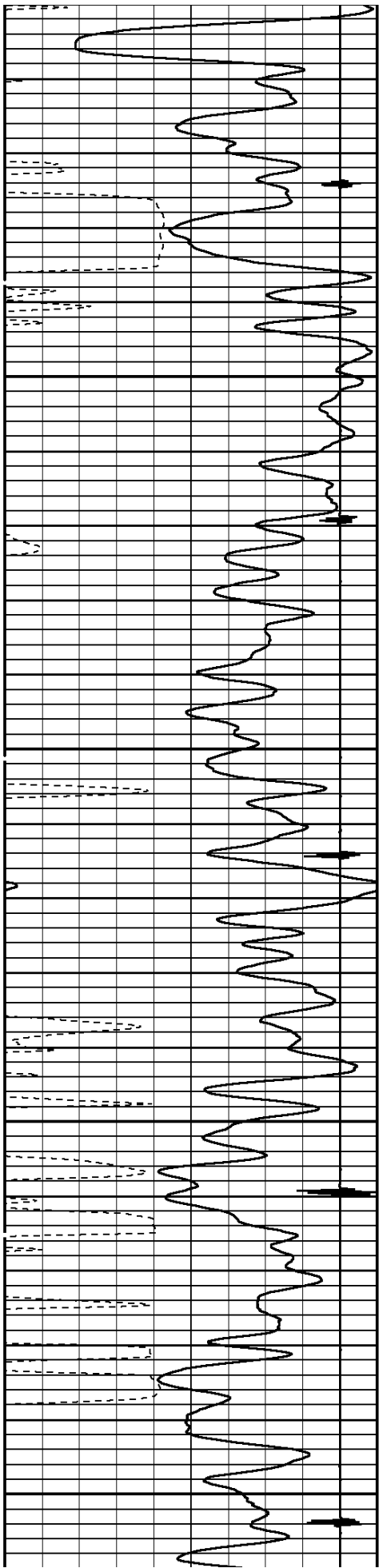




4700

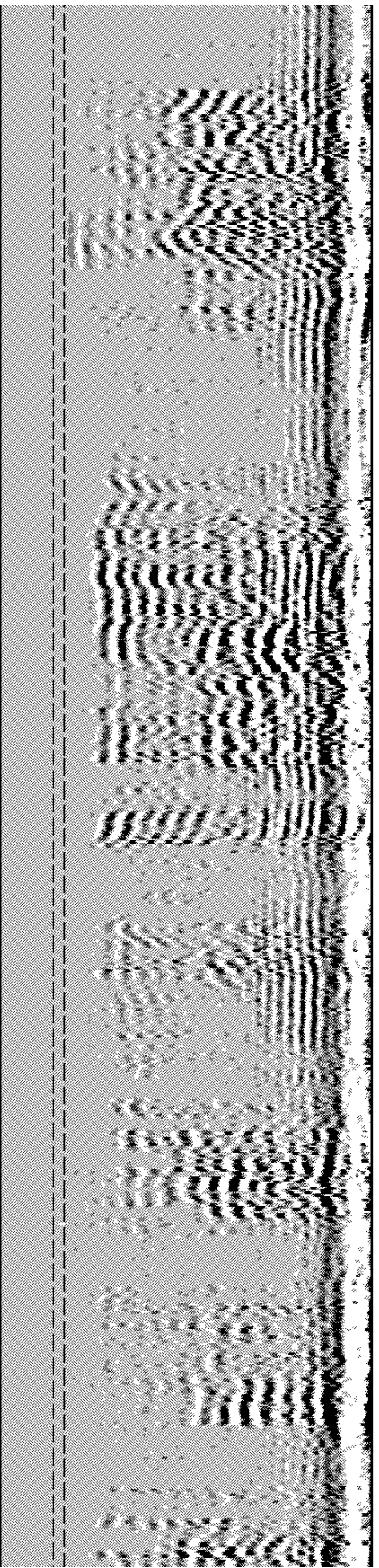
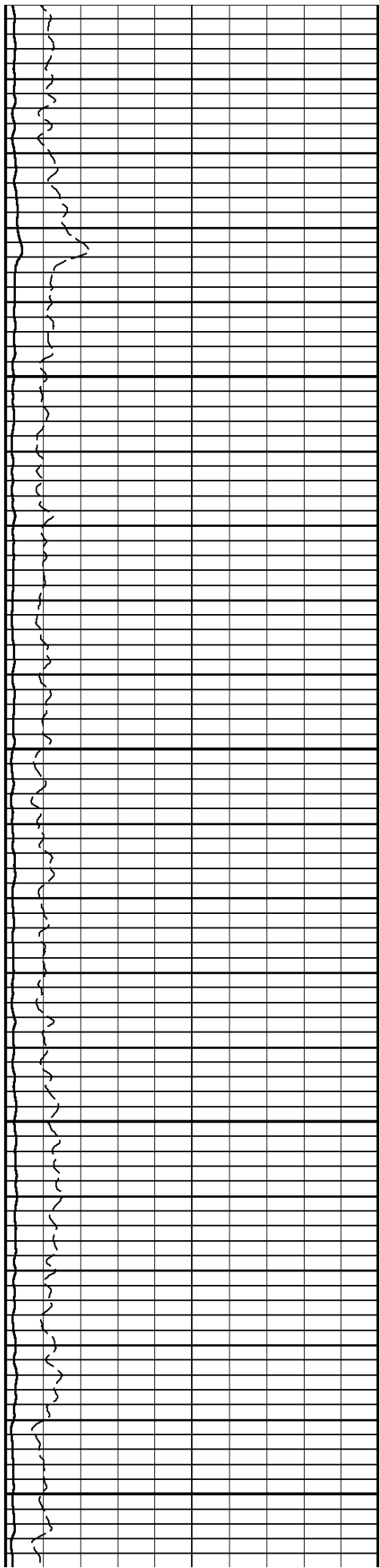
4800

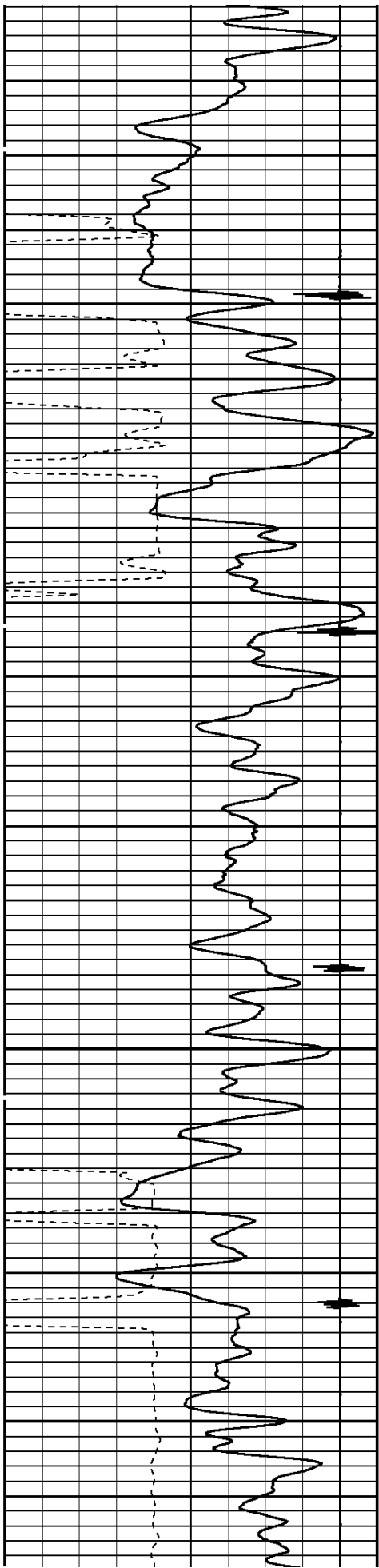




4900

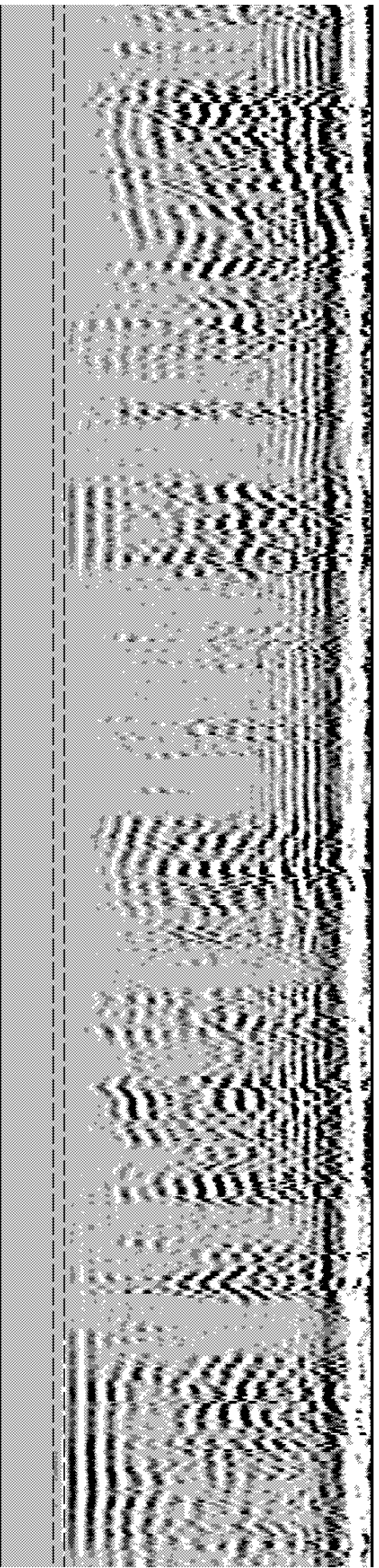
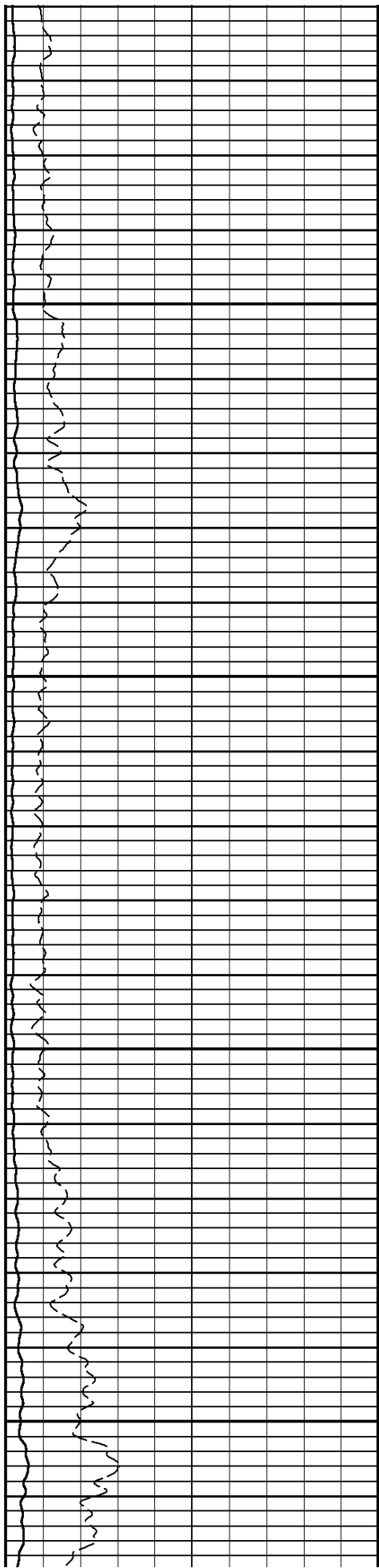
5000

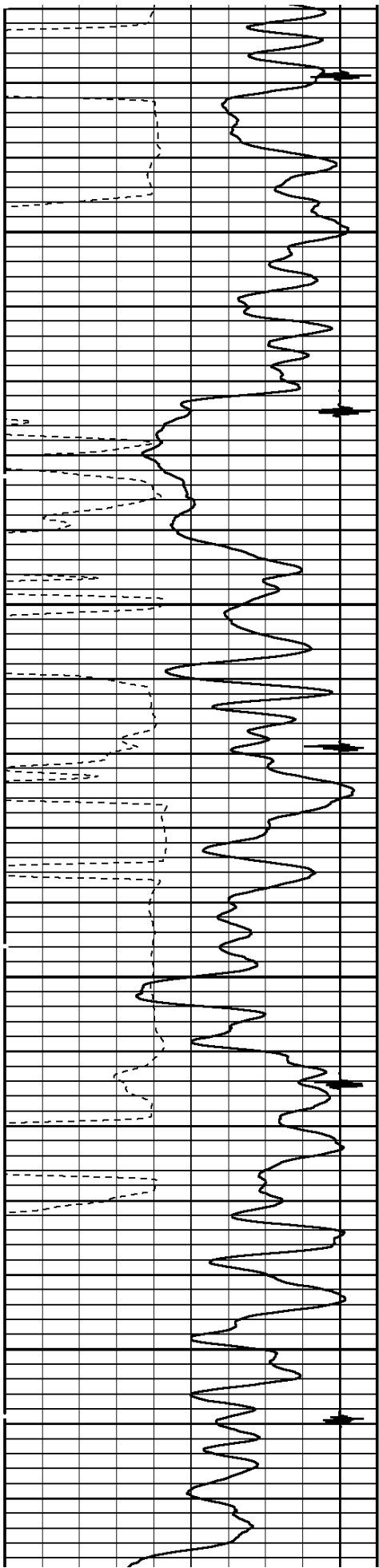




5100

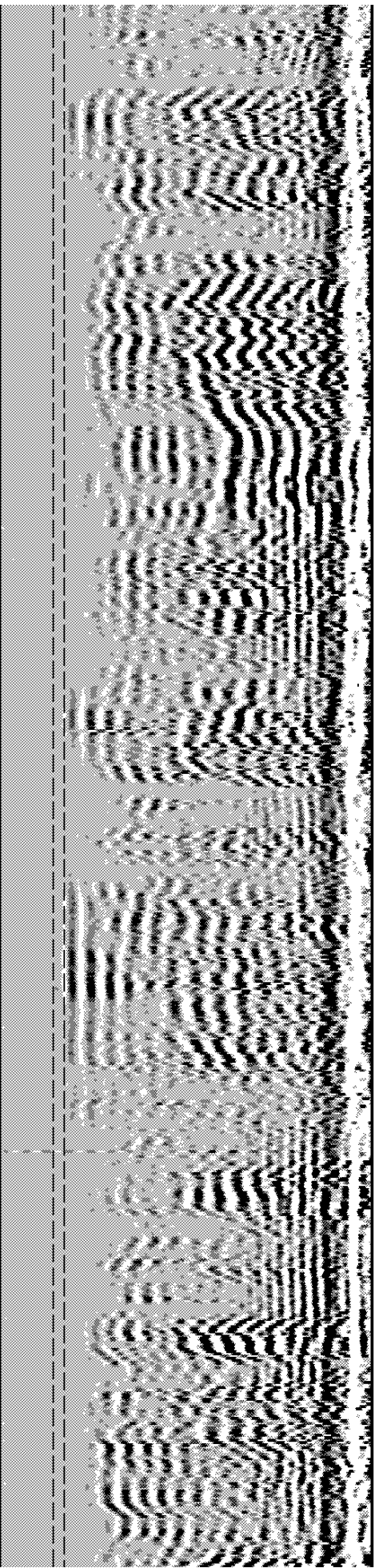
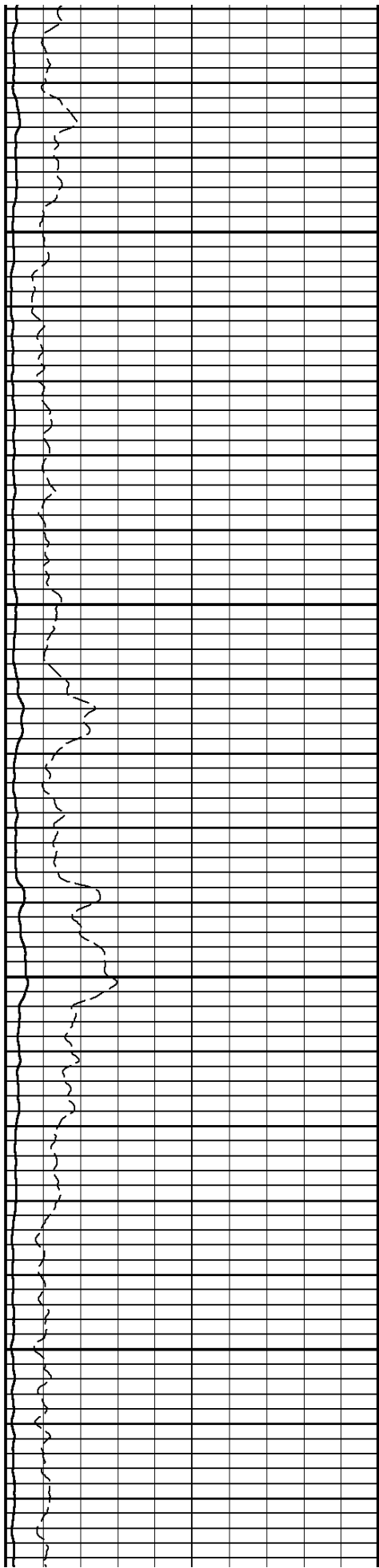
5200

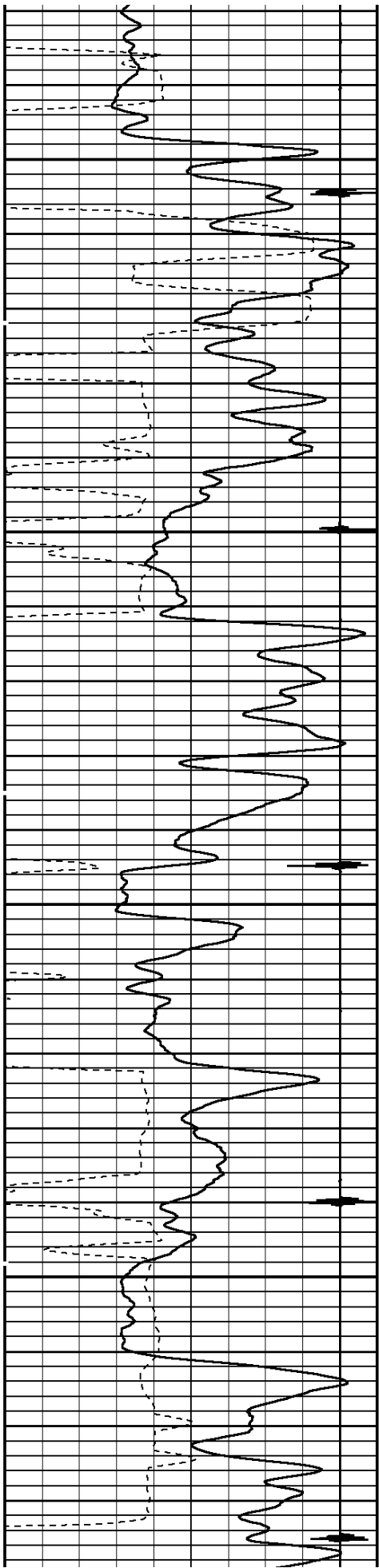




5300

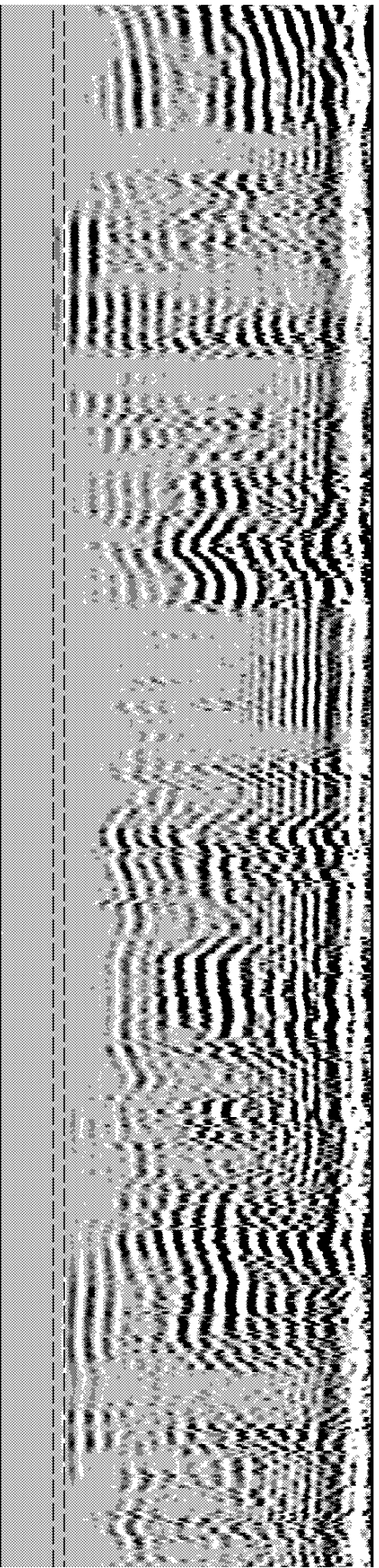
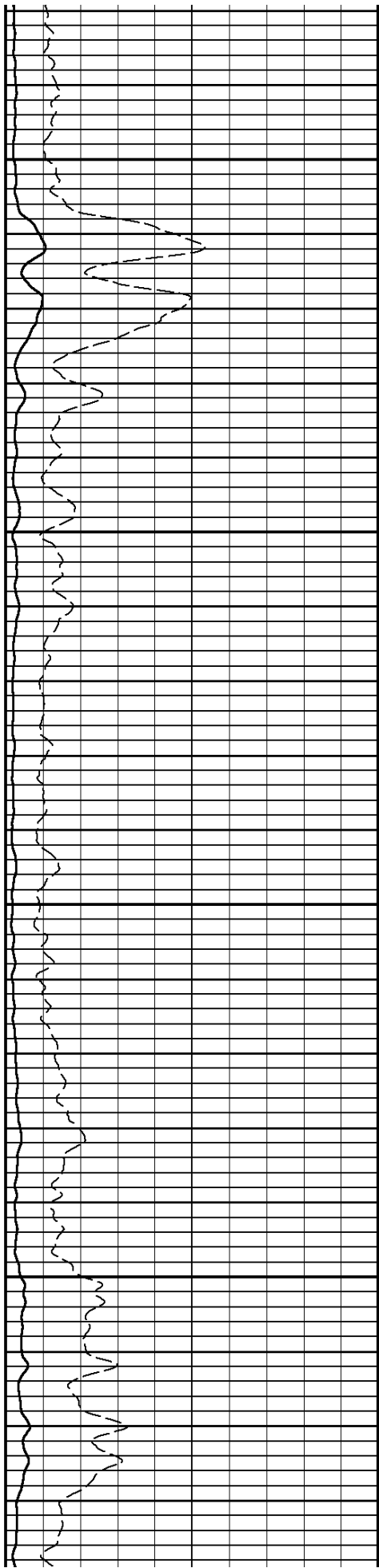
5400

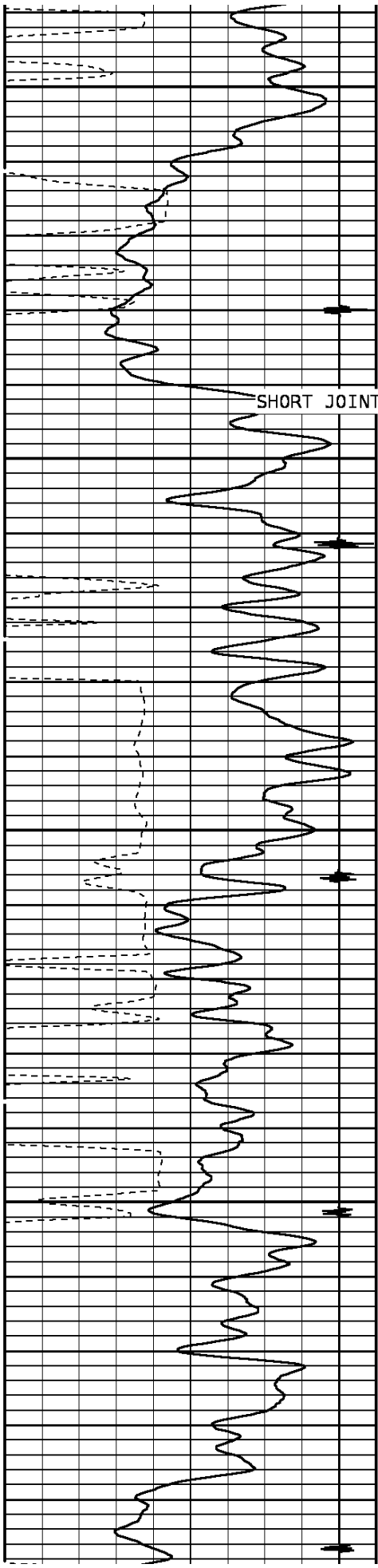




5500

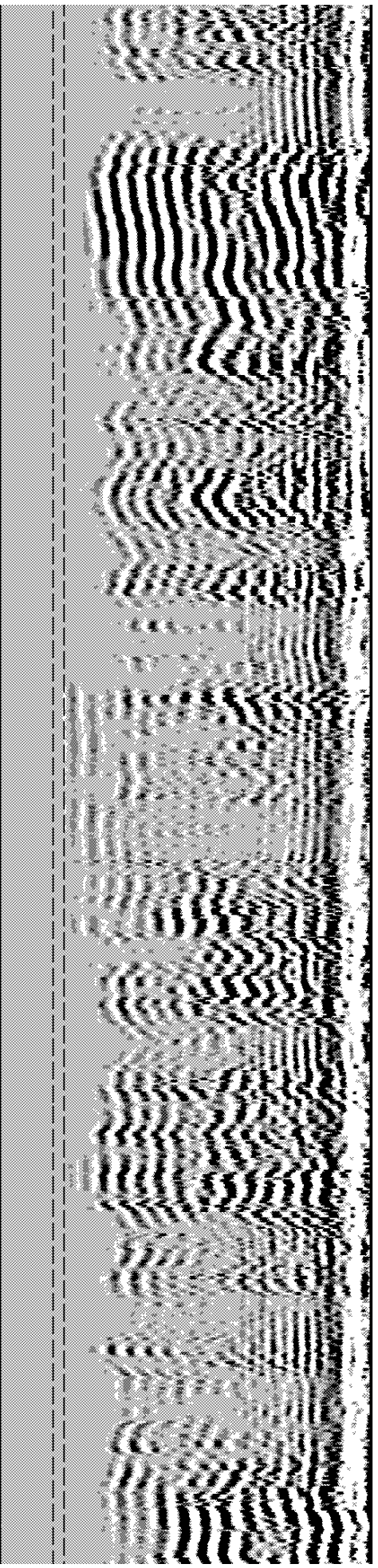
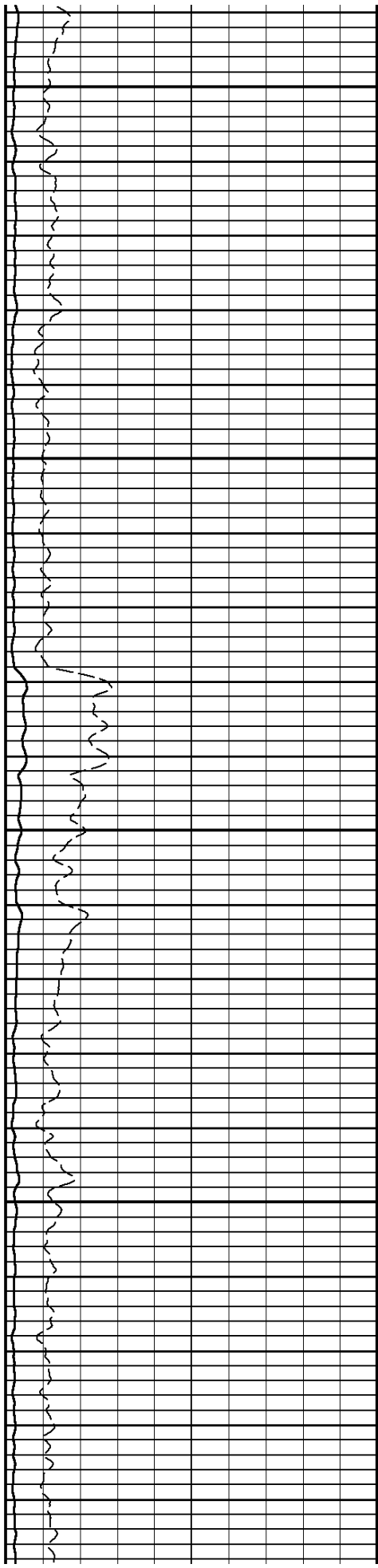
5600

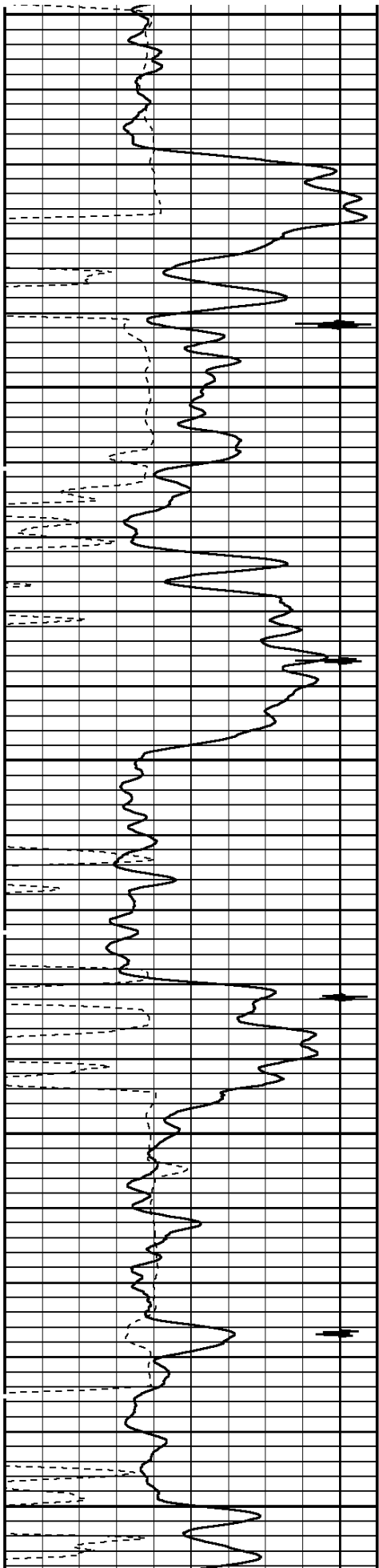




5700

5800

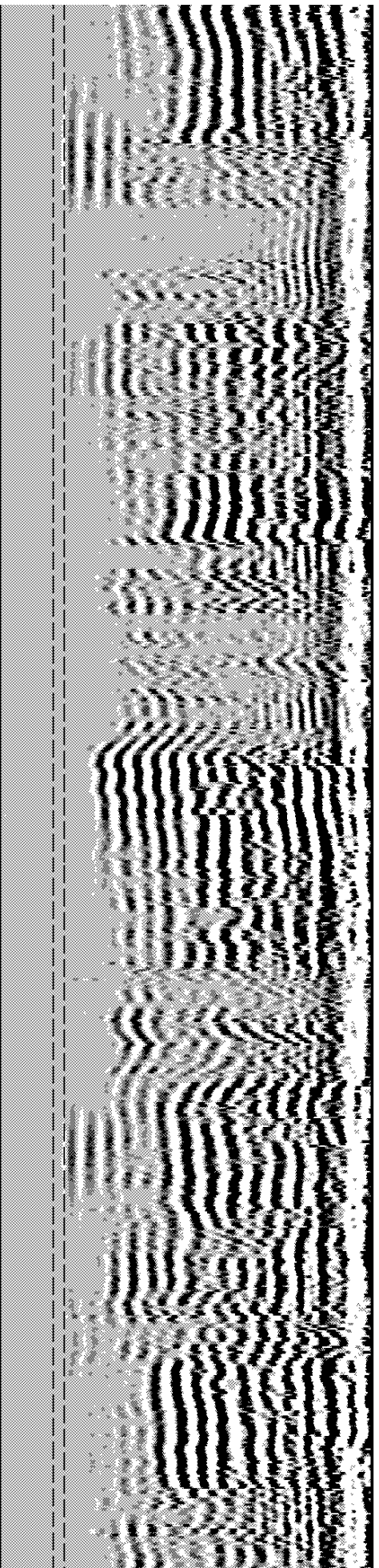
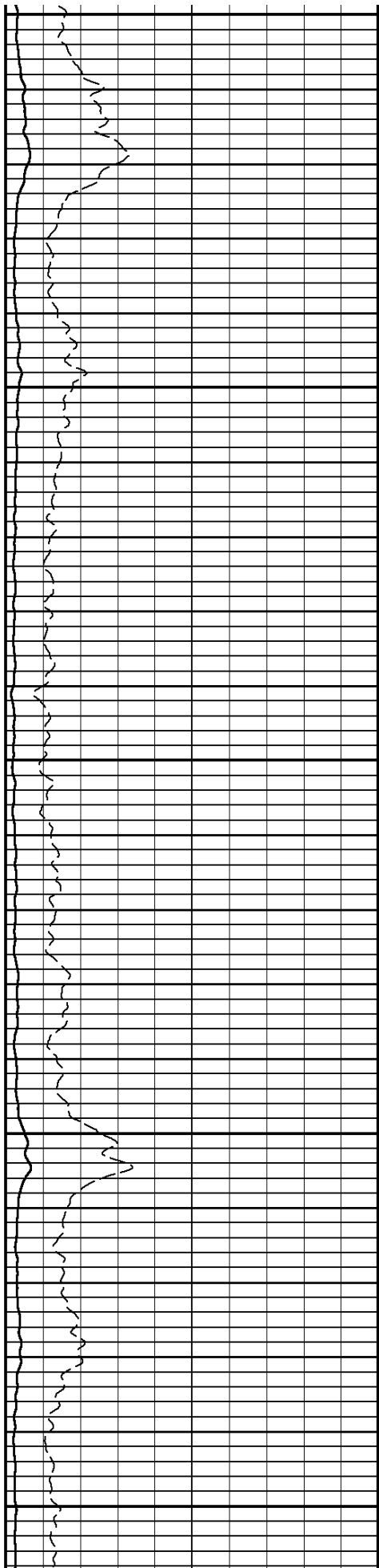


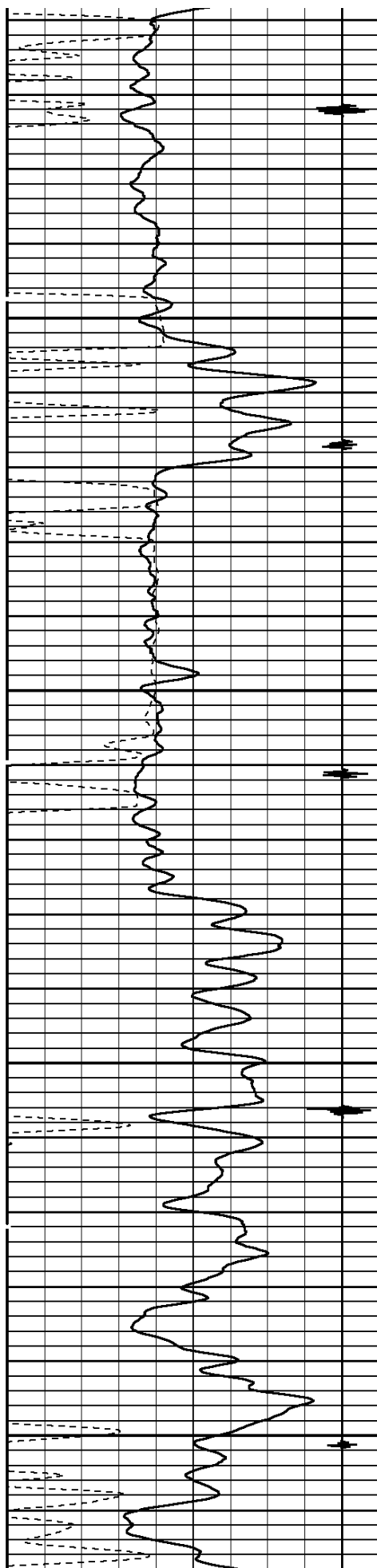


5900

6000

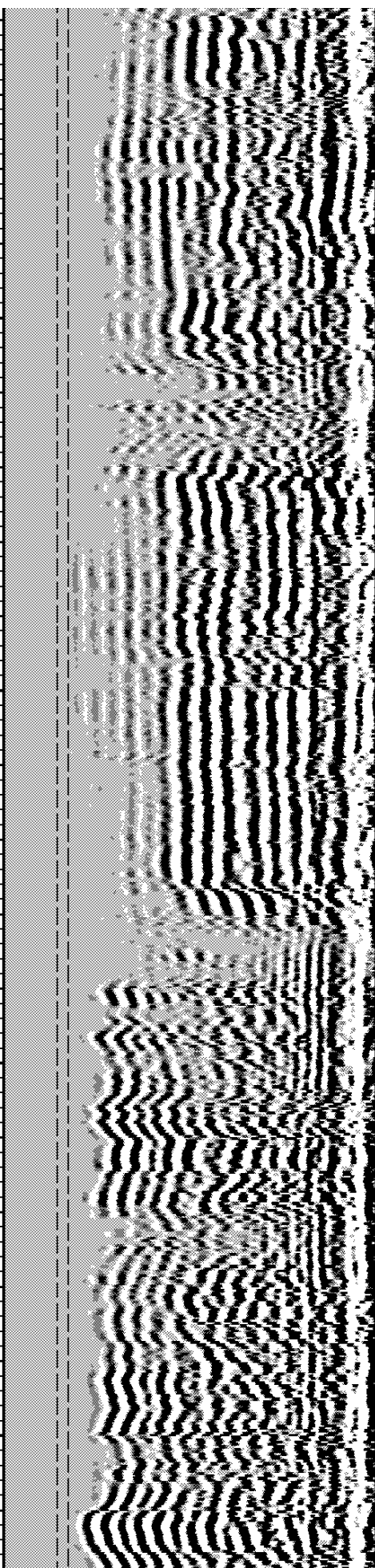
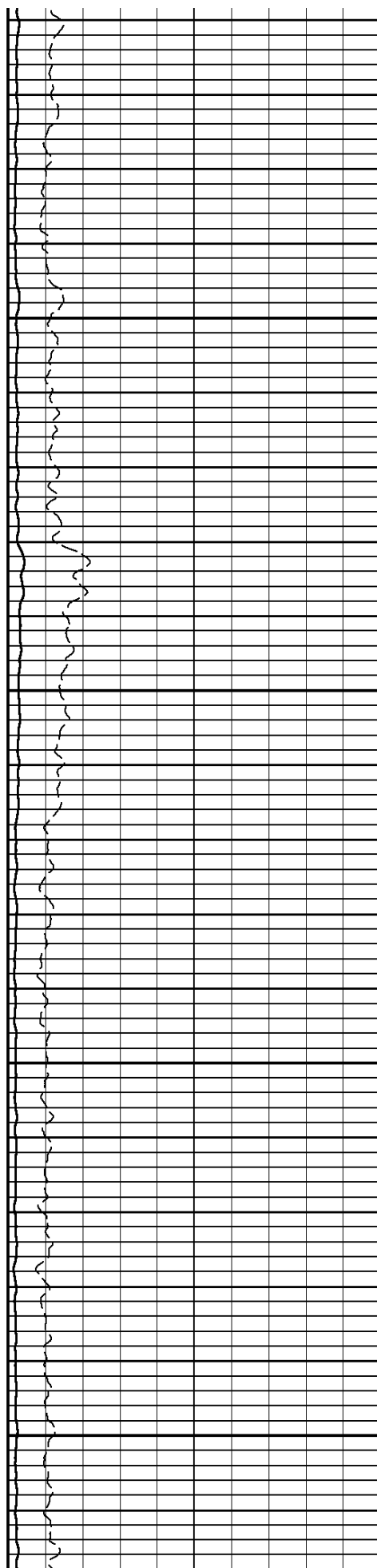
6100

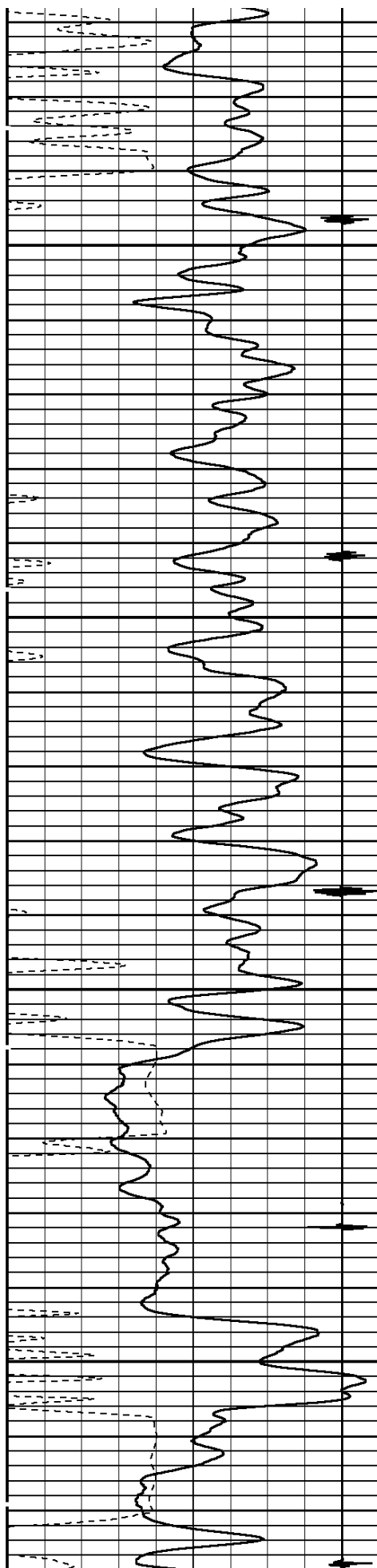




6200

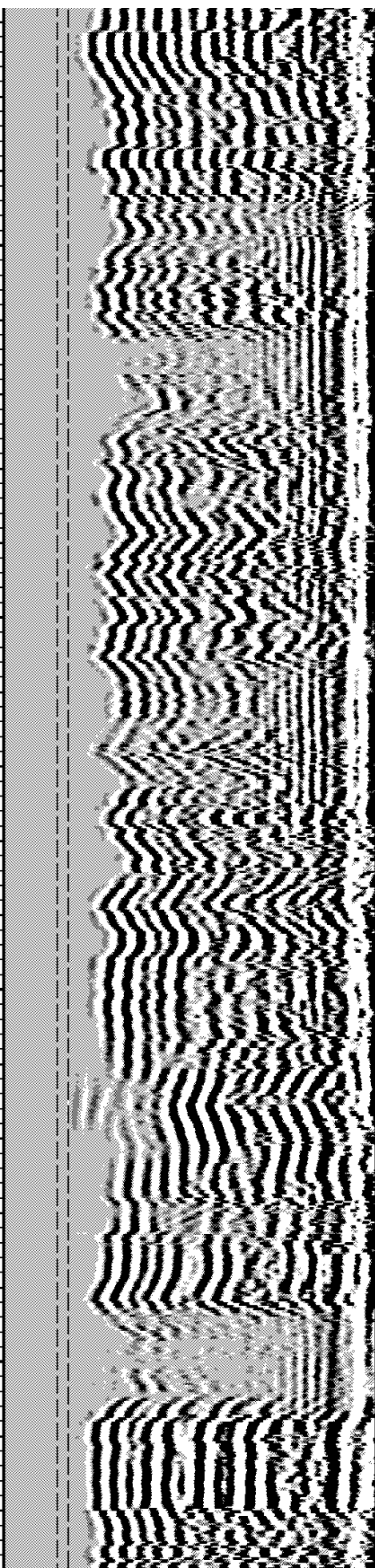
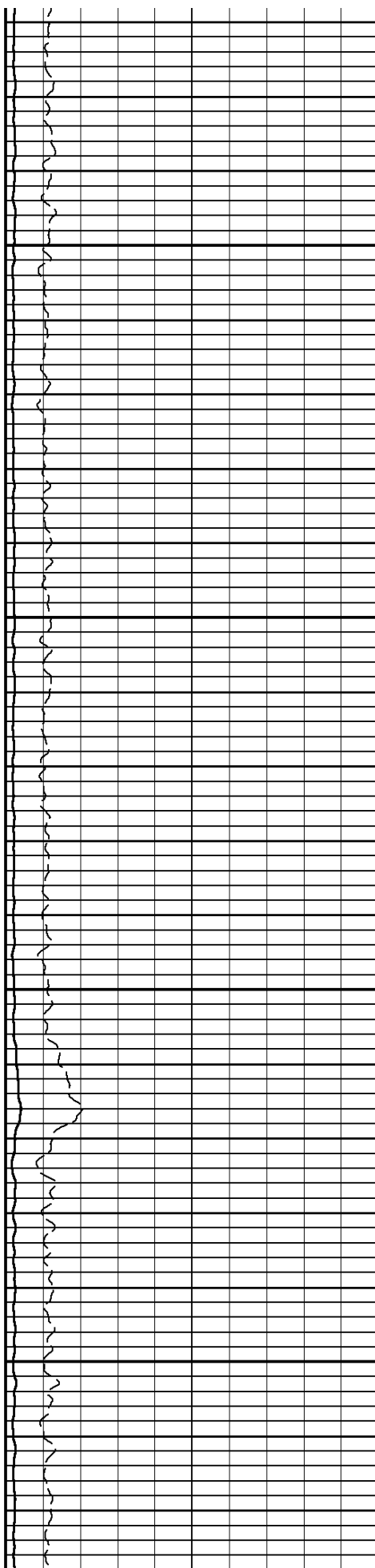
6300

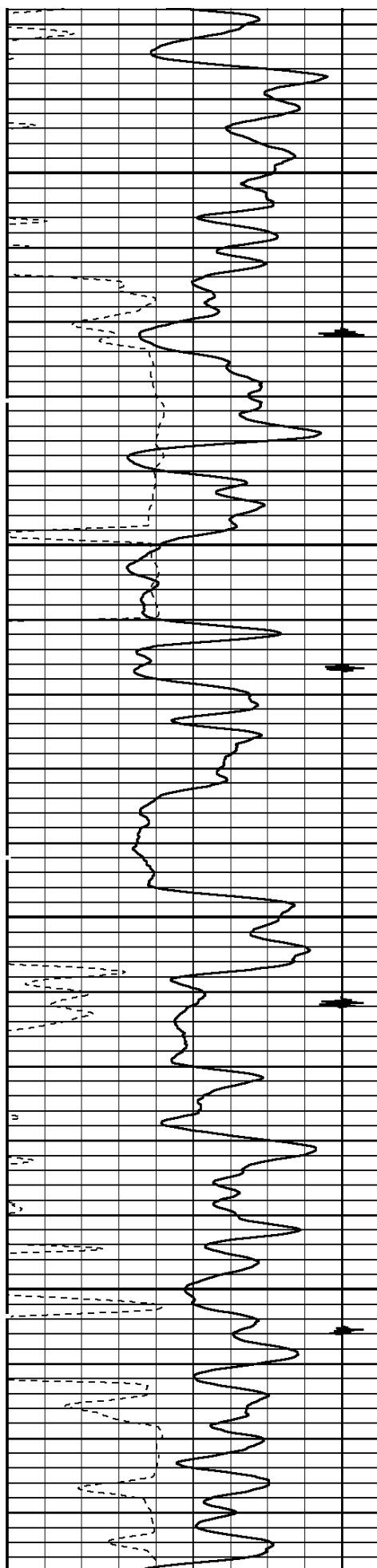




6400

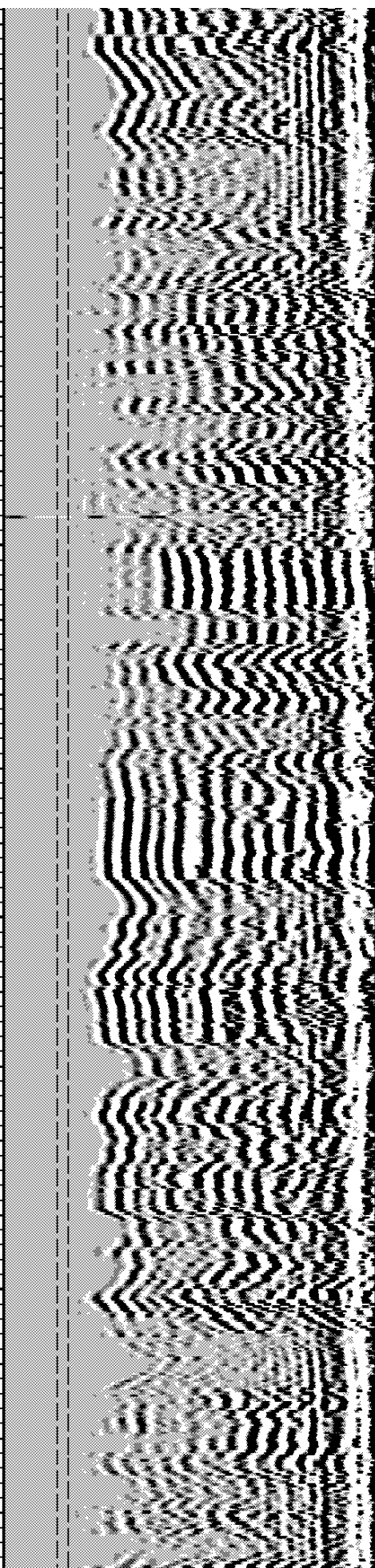
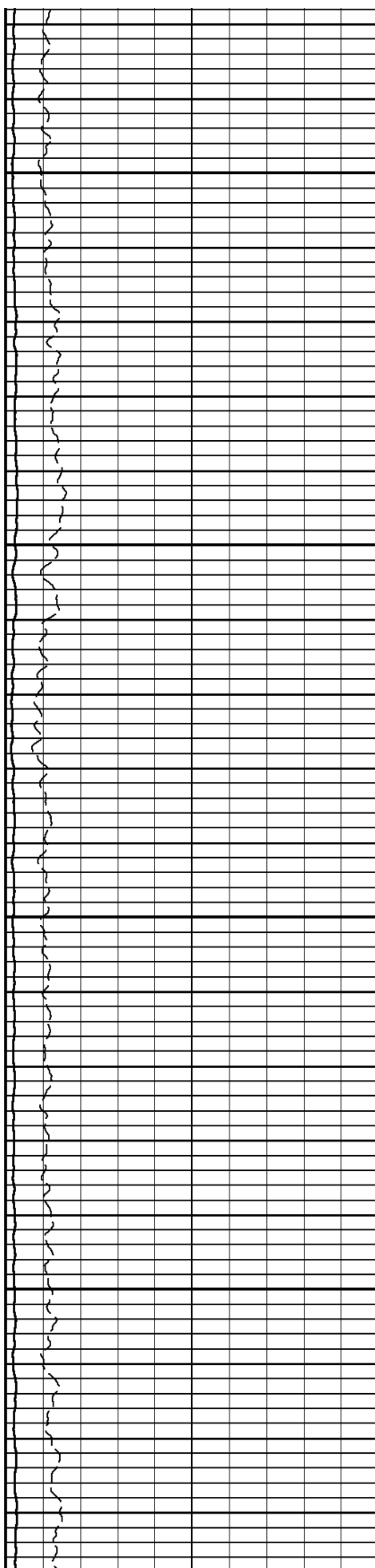
6500

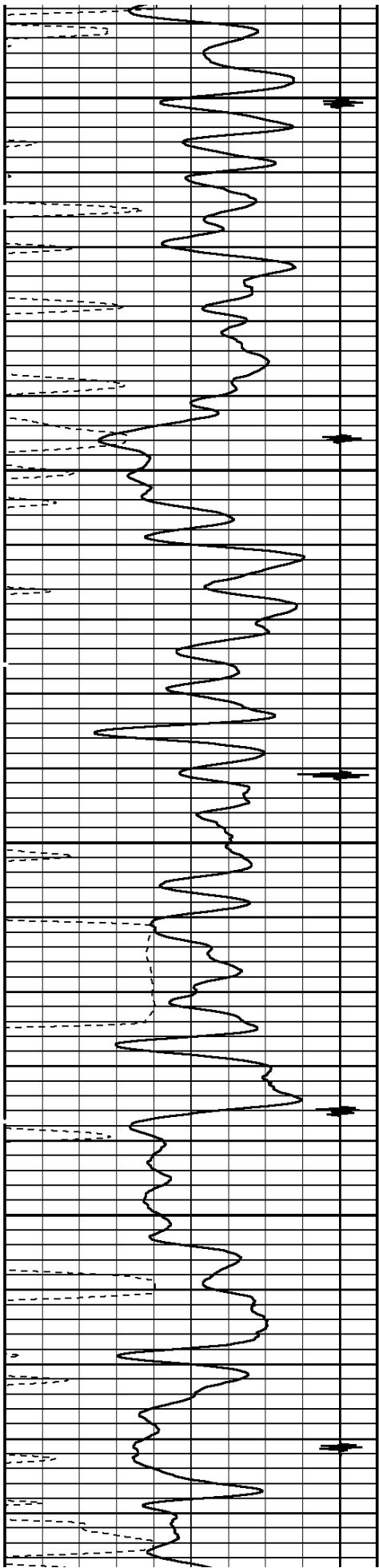




6600

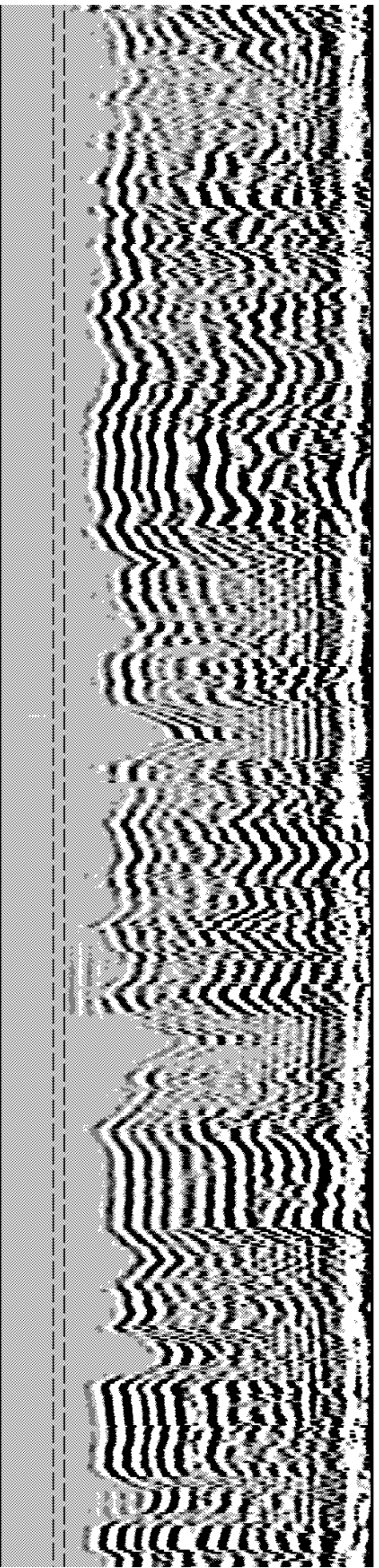
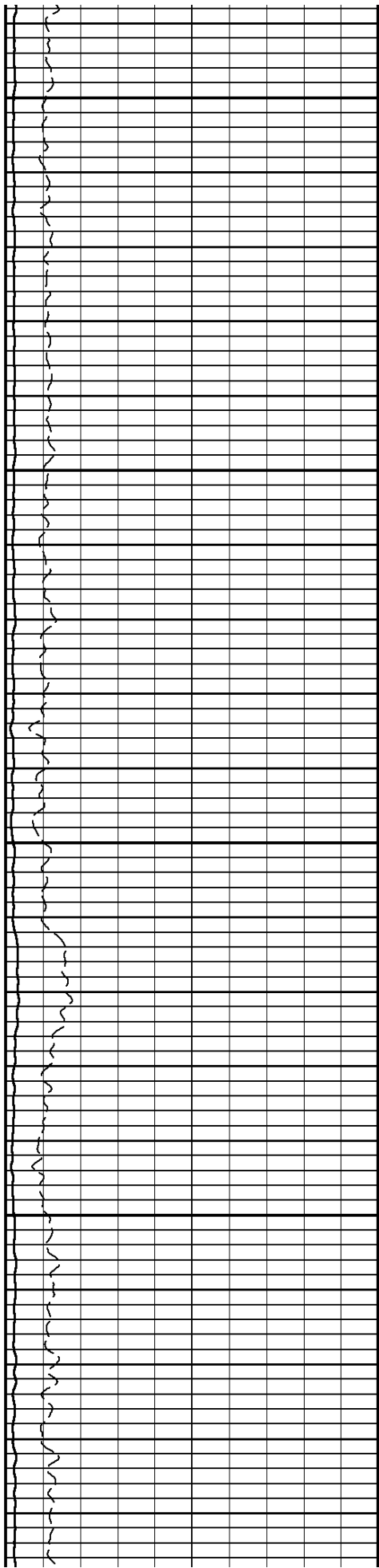
6700

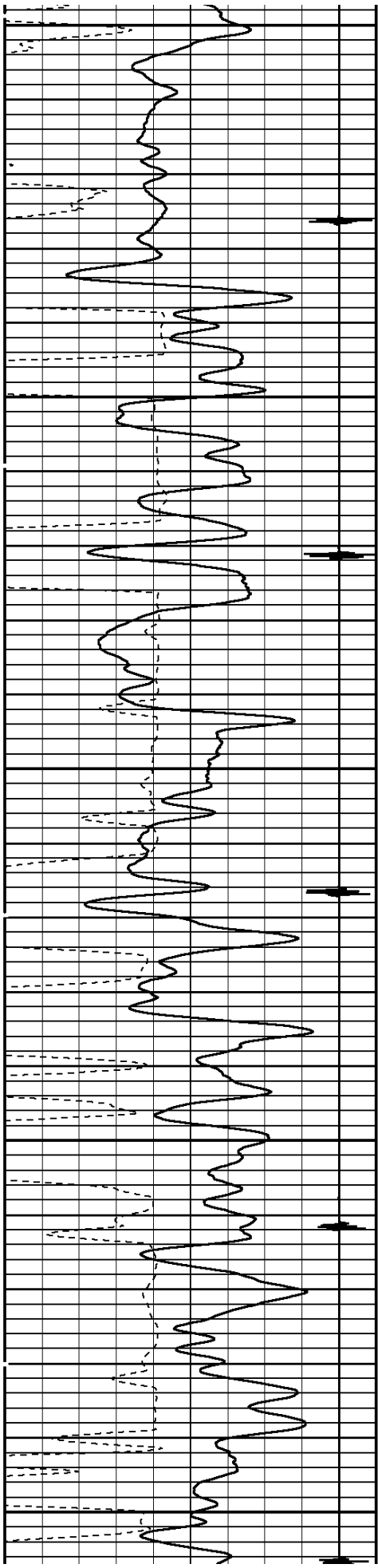




6800

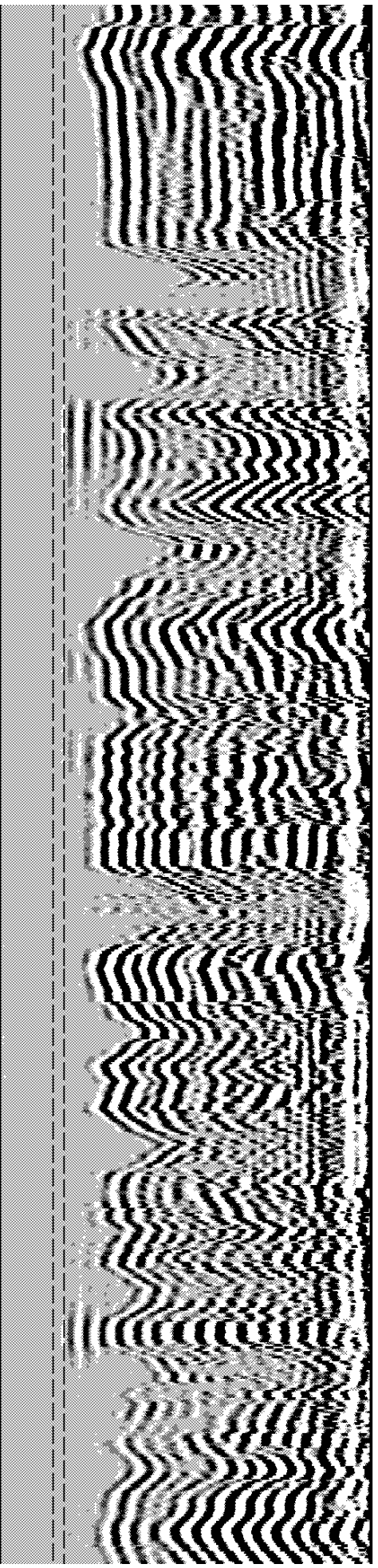
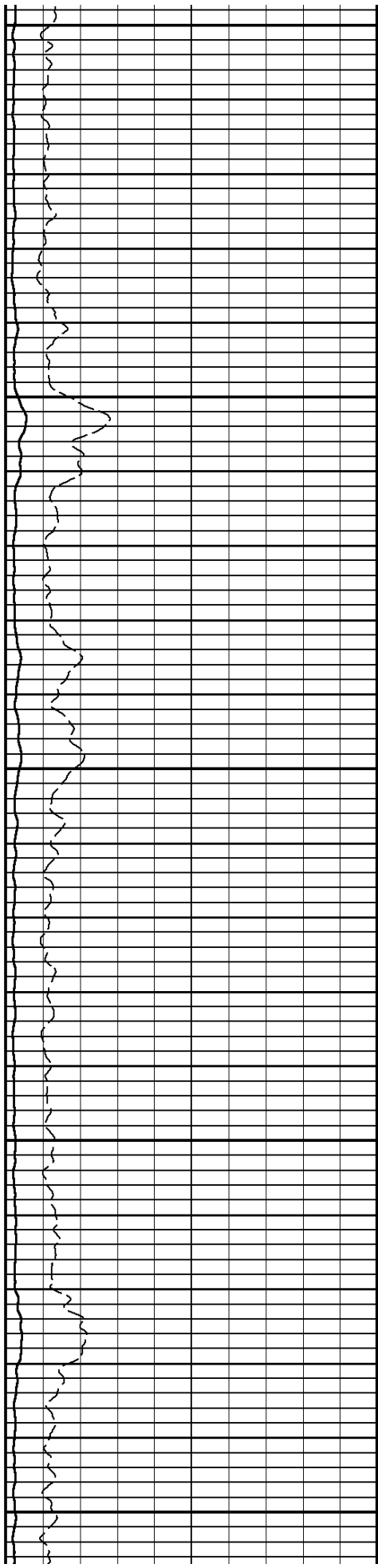
6900

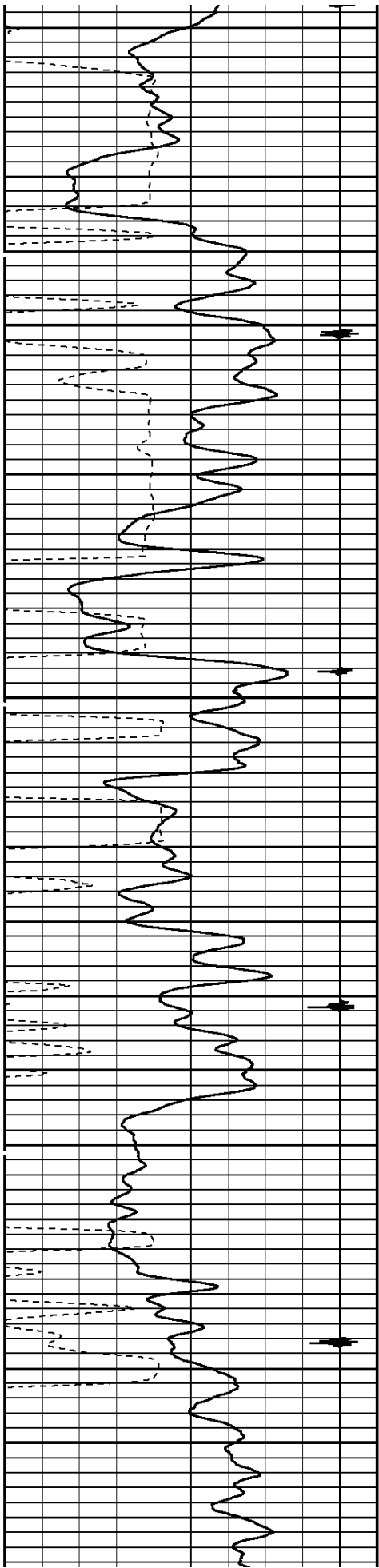




7000

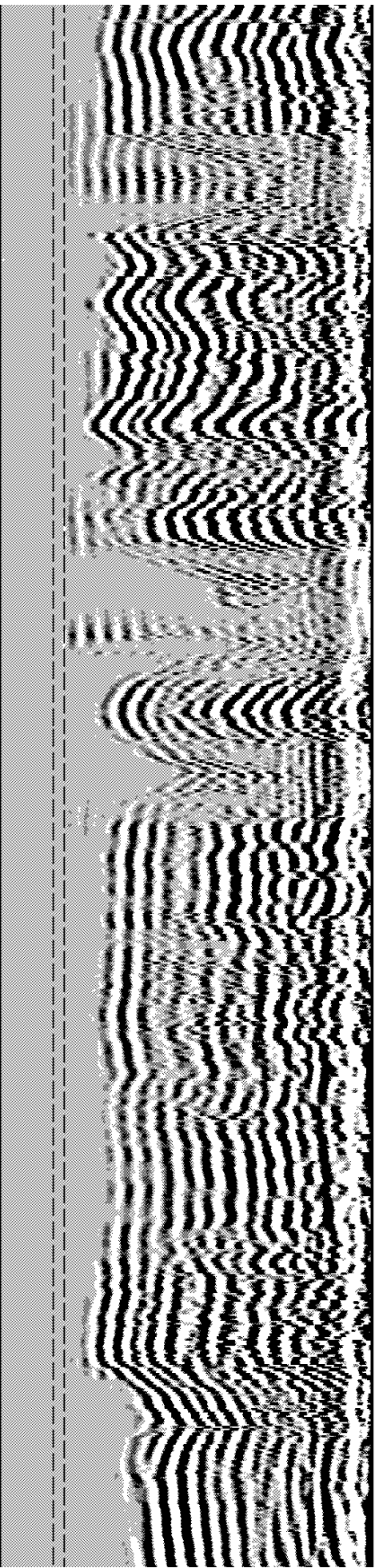
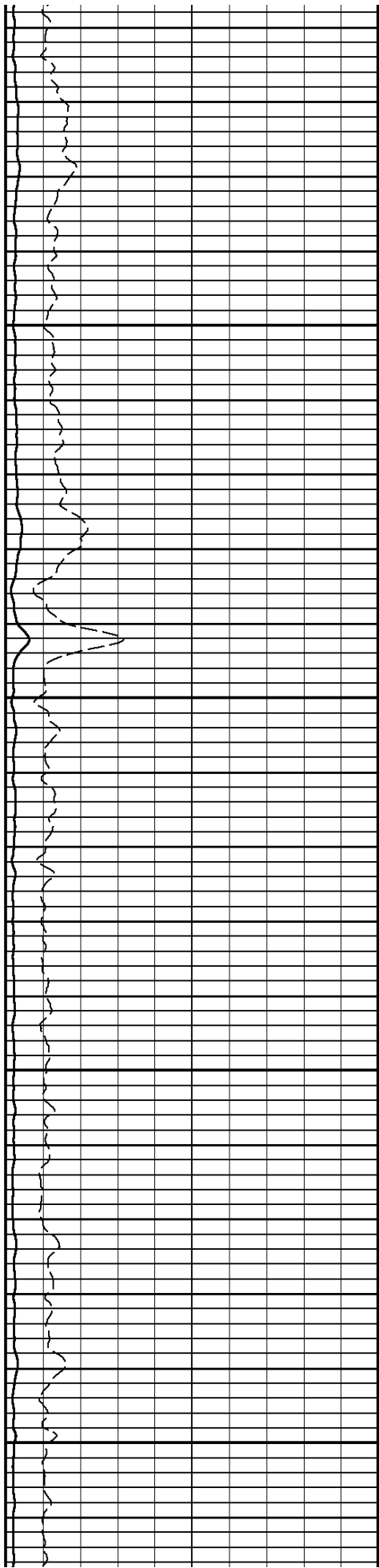
7100

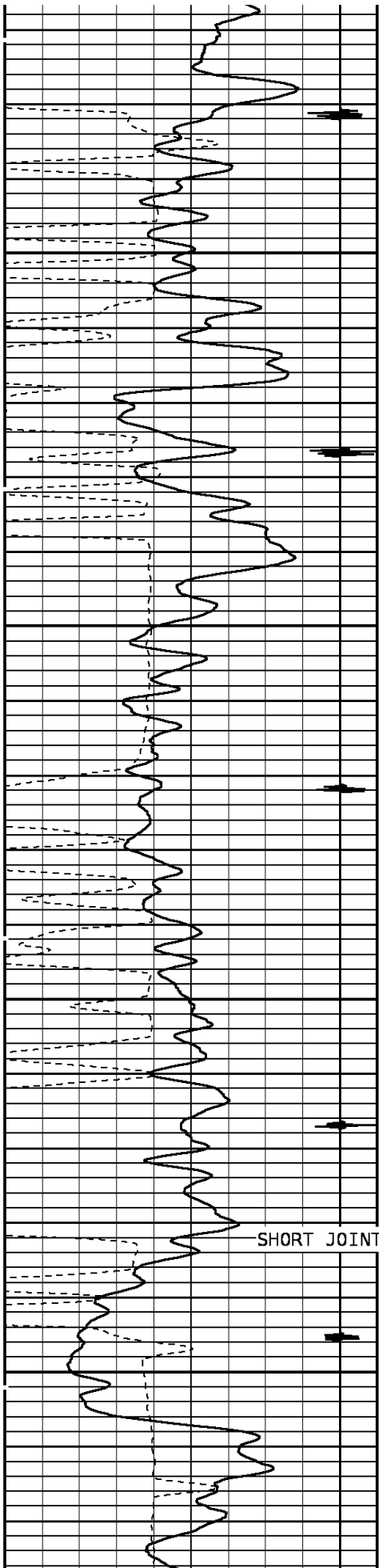




7200

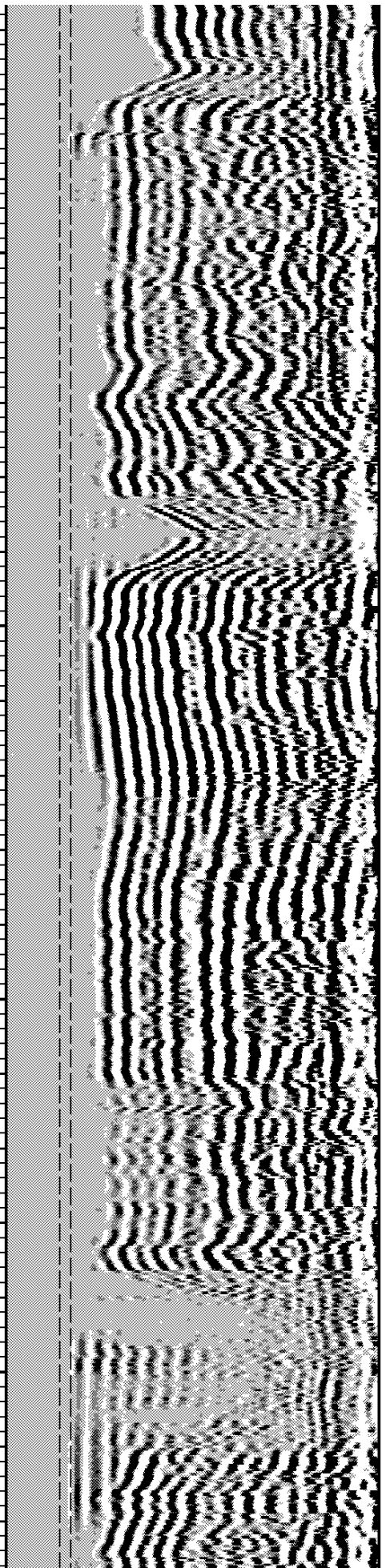
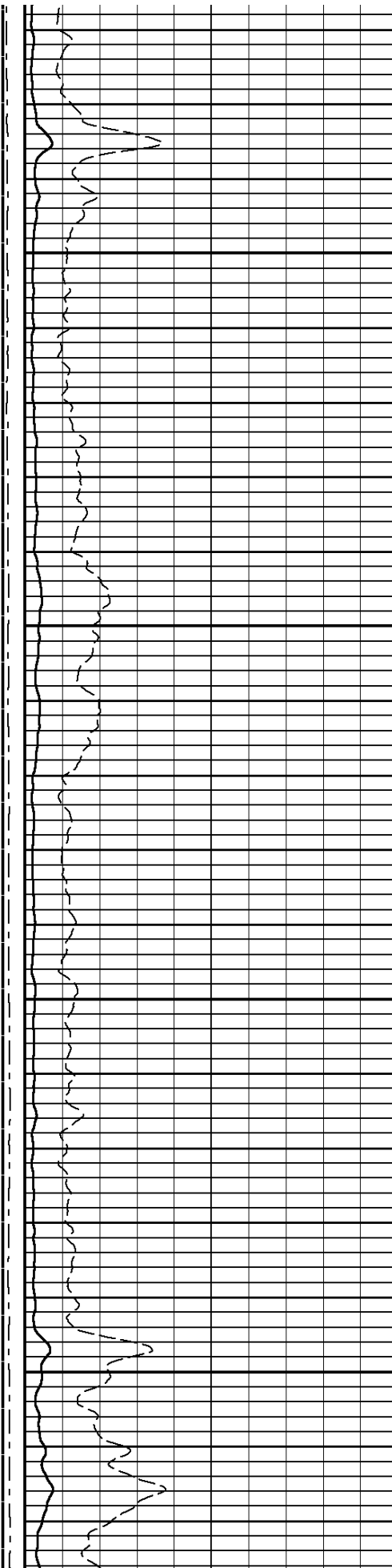
7300

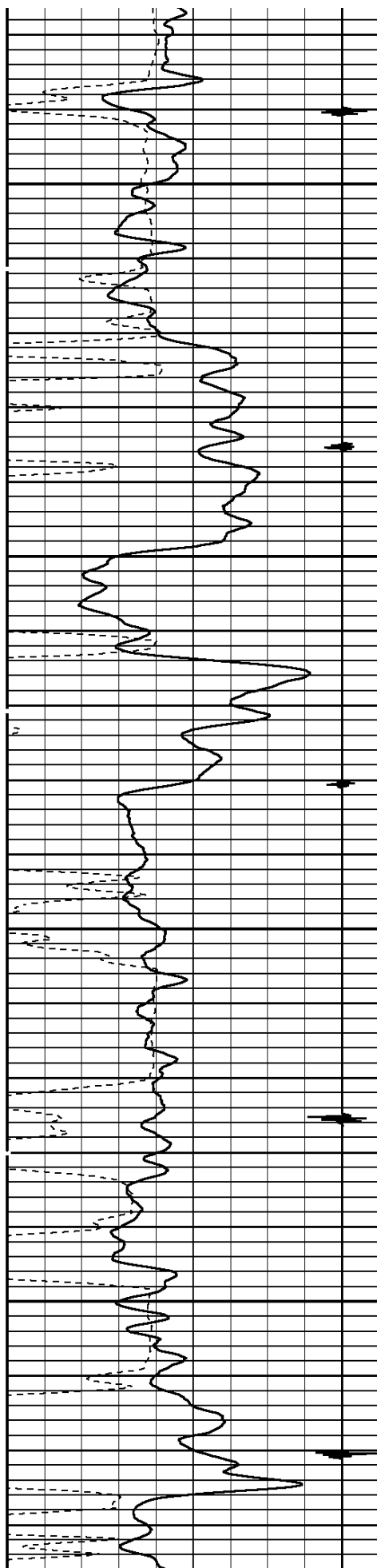




7400

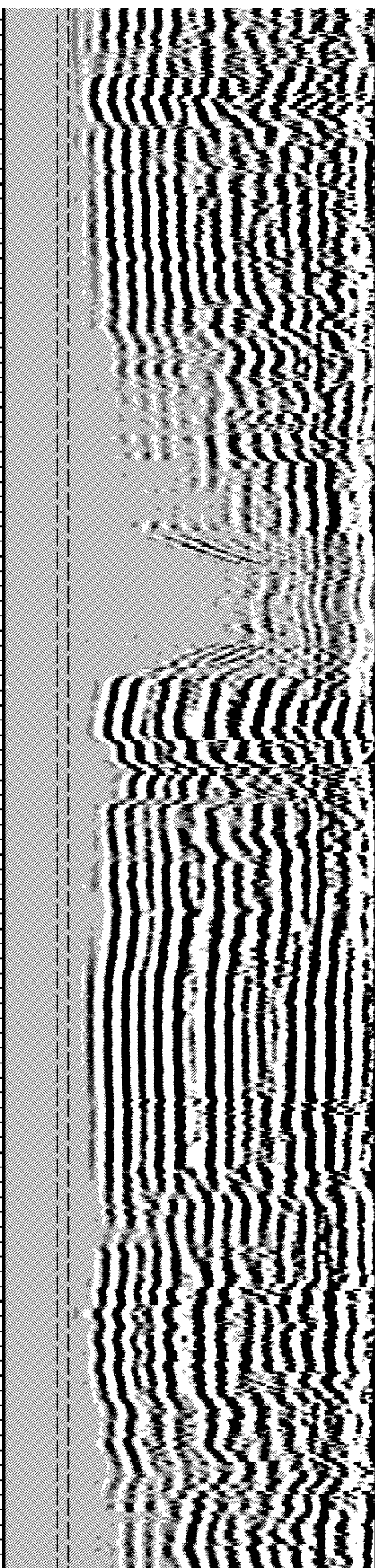
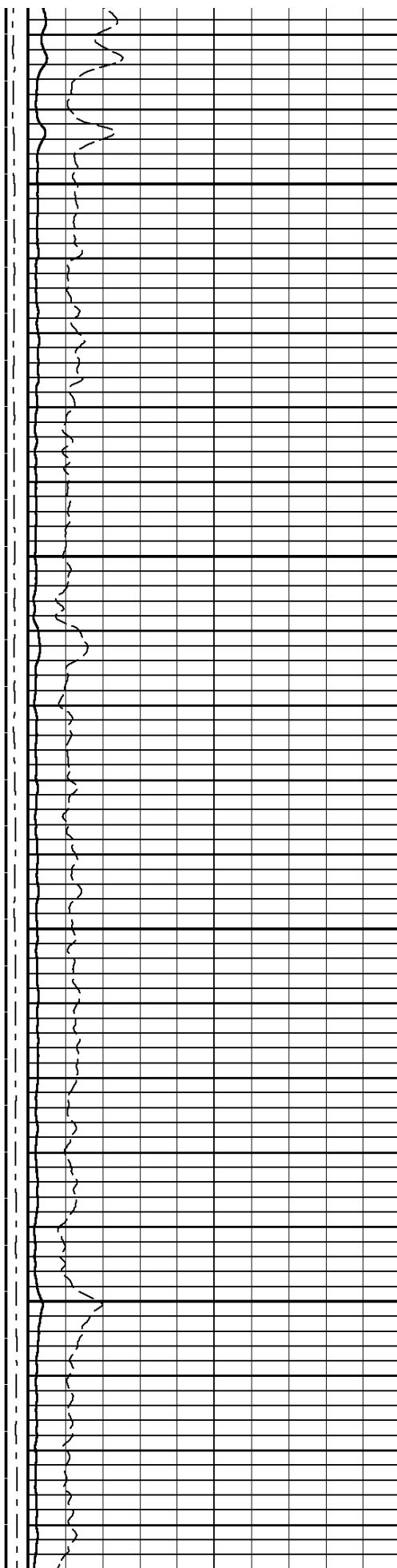
7500

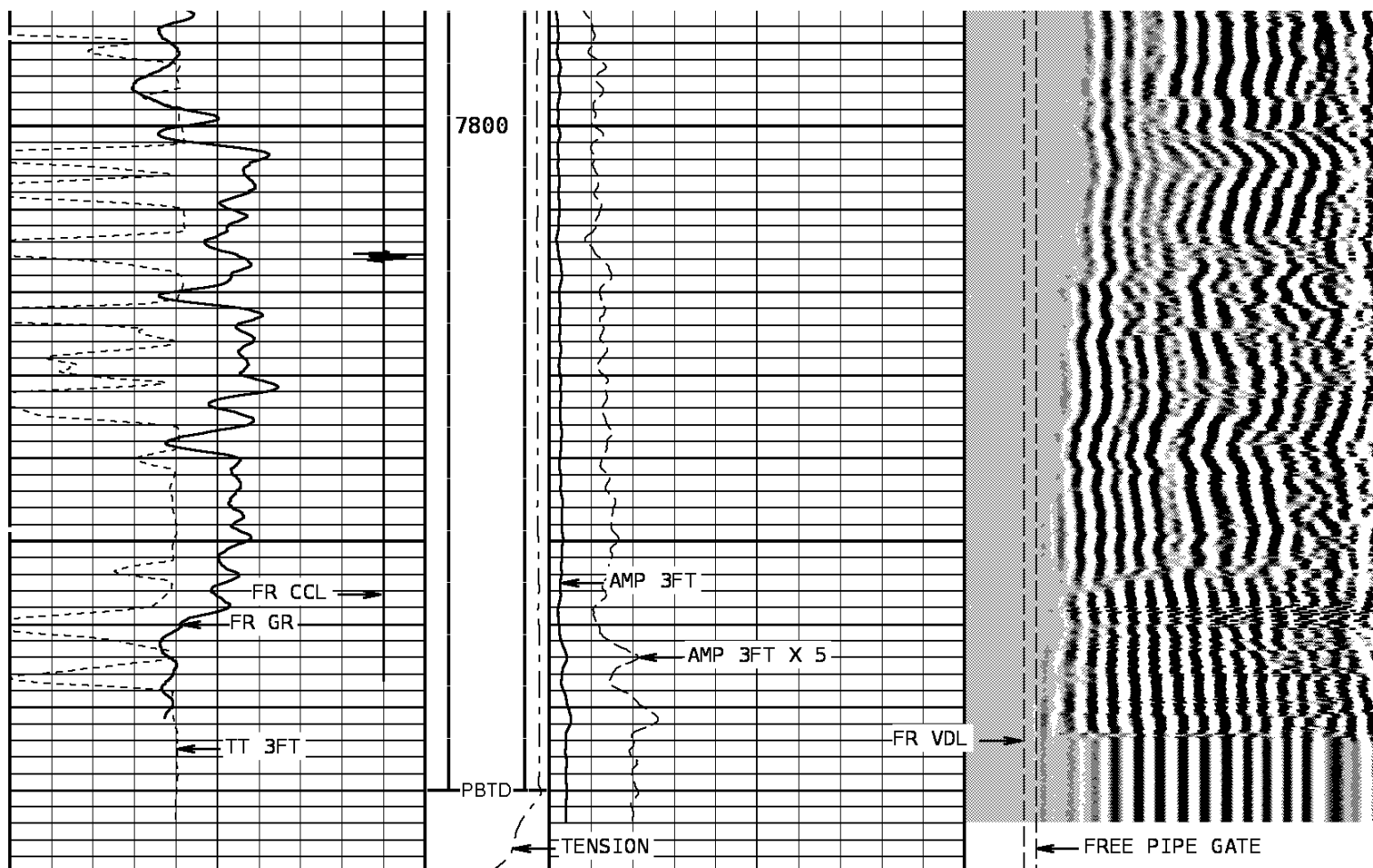




7600

7700





TRAVEL TIME 3FT			Tension		AMPLITUDE 3FT		VARIABLE DENSITY 5FT			
-----					-----		-----			
310	Microseconds	210	0	2300	0	Millivolts	100	200	Microseconds	1200
Gamma Ray					AMPLITUDE 3FT X5		FREE PIPE GATE			
-----					-----		-----		-----	
0	API	150			0	Millivolts	20	200	Microseconds	1200
Collar Locator							FREE PIPE GATE			
-----							-----		-----	
-4000	Millivolts	440						200	Microseconds	1200

START DEPTH: 7890.3 DIRECTION: UP DATE: 01/12/2009 TIME: 10:49 MODE: ORIGINAL

156891 CBLMAIN

MAIN PASS

DEPTH SCALE: 5":100'

VERSION: 80214133R"

REMARKS

LOGGED WITH 0 PSI @ SURFACE

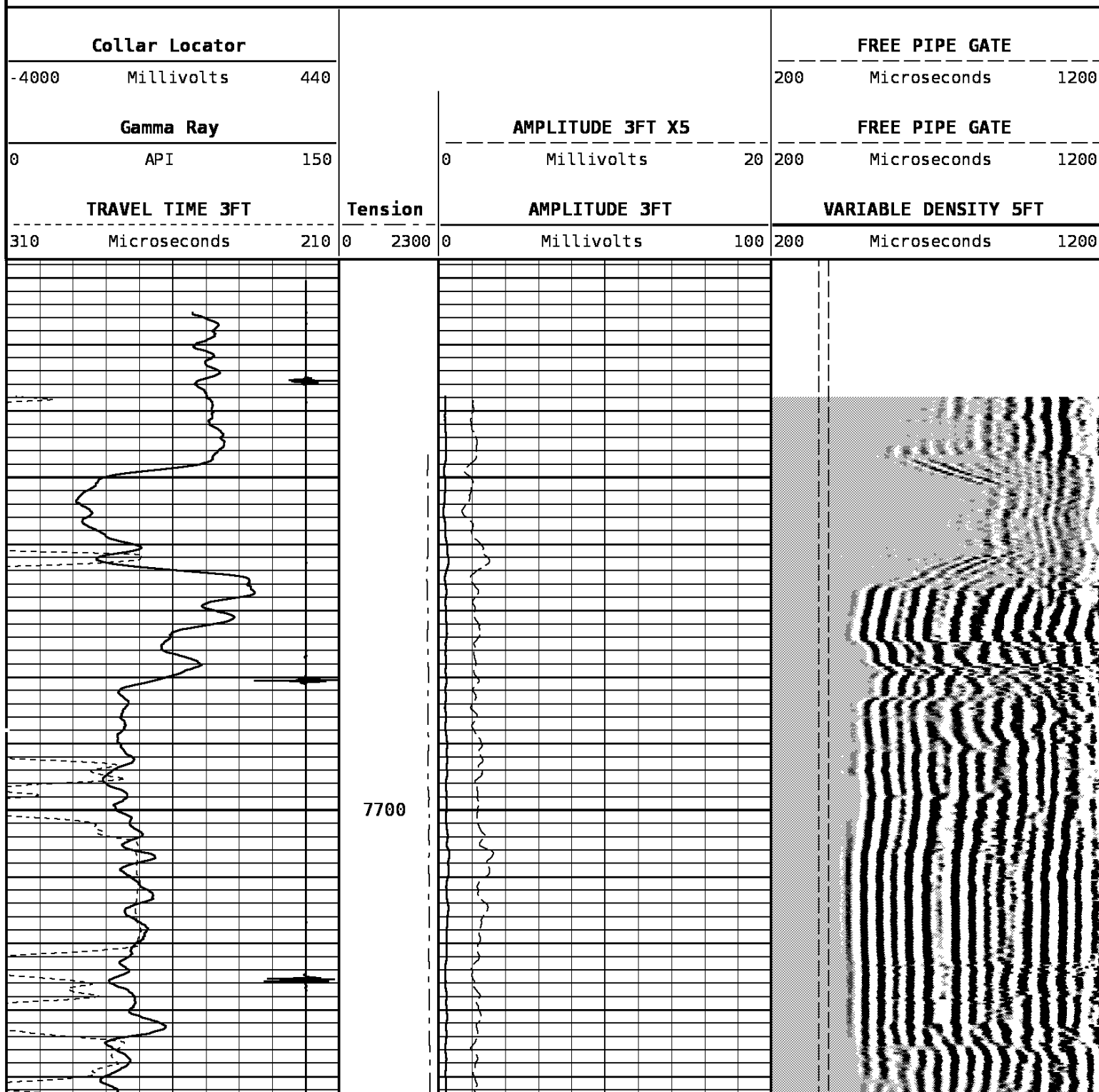
DEPTH SCALE: 5":100'

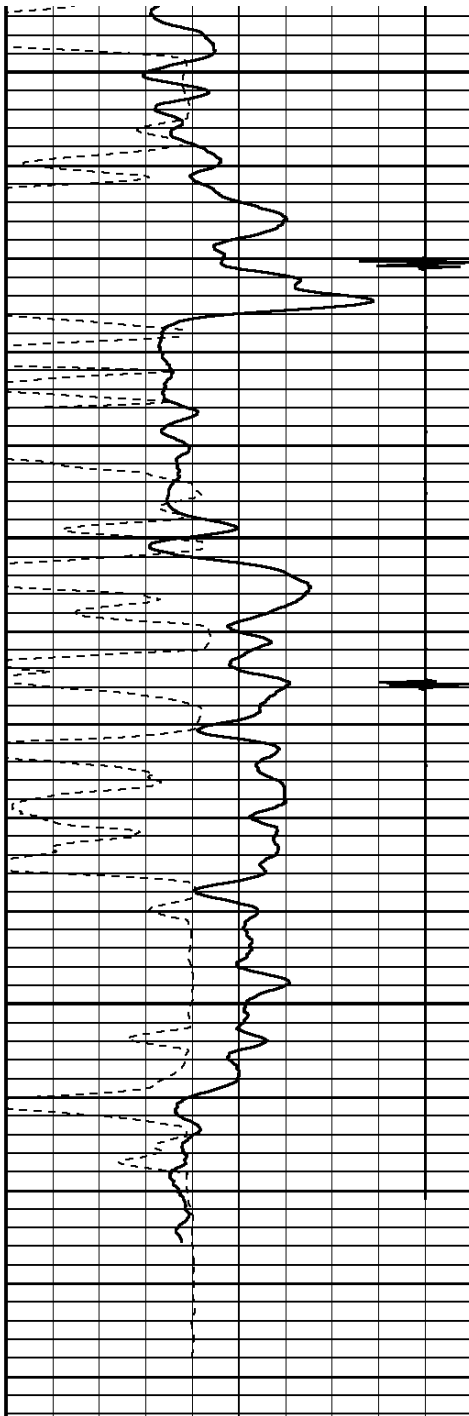
VERSION: 80214133R"

REPEAT PASS

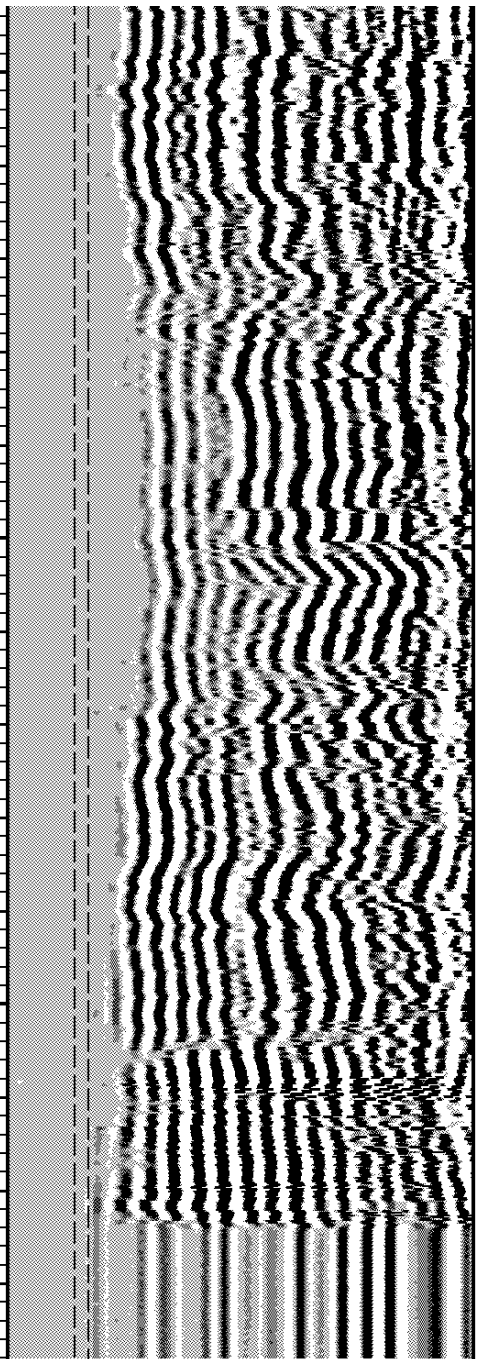
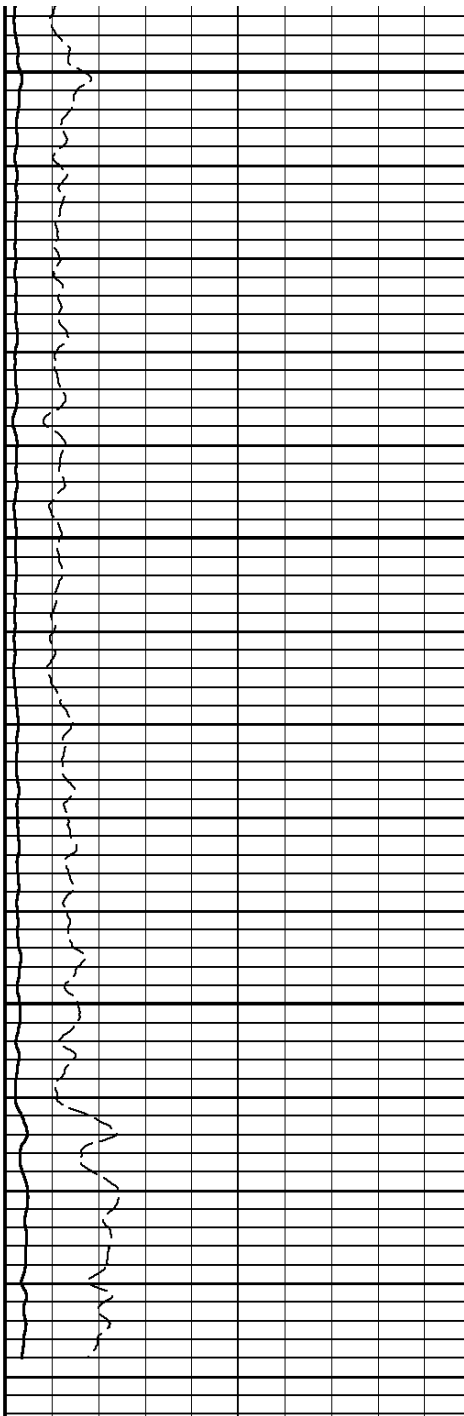
156891 CBLREPEAT

FINISH DEPTH: 7617.4 Feet DIRECTION: UP DATE: 01/12/2009 TIME: 10:08 MODE: ORIGINAL





7800



TRAVEL TIME 3FT			Tension	AMPLITUDE 3FT			VARIABLE DENSITY 5FT				
310	Microseconds	210		0	2300	0	Millivolts	100	200	Microseconds	1200
Gamma Ray				AMPLITUDE 3FT X5			FREE PIPE GATE				
0	API	150		0	Millivolts	20	200	Microseconds	1200		
Collar Locator							FREE PIPE GATE				
-4000	Millivolts	440					200	Microseconds	1200		

START DEPTH: 7894.6 DIRECTION: UP DATE: 01/12/2009 TIME: 10:08 MODE: ORIGINAL

156891 CBLREPEAT

REPEAT PASS

DEPTH SCALE: 5":100'

VERSION: 80214133R"

1 7/16 Adapter Head

Weight 2.2 LB.
Length 12 IN.
Max. Diameter 1.44 IN.

Total Stack Weight 208.0 LBS. in air
Total Stack Length 25.34 FT.

Collar Locator

Weight 39.8 LBS.
Length 3.40 FT.
Max. Diameter 2.75 IN.

Slim Hole Gamma Ray

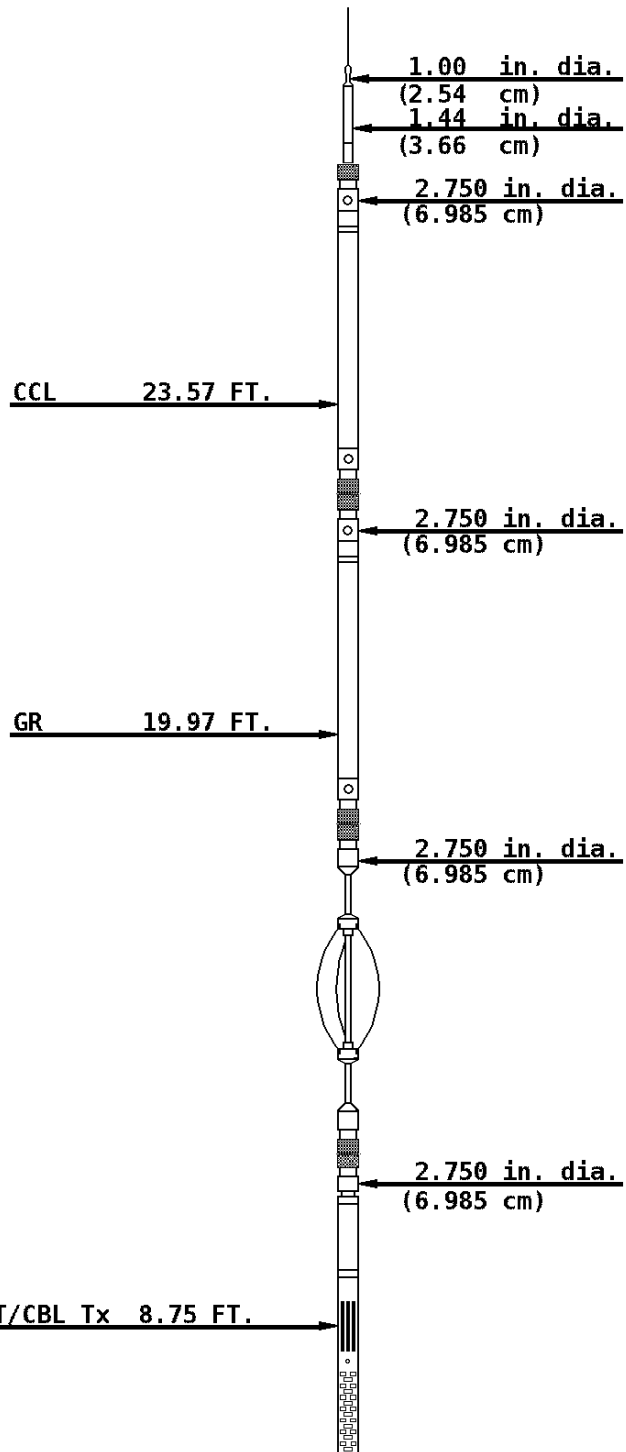
Weight 39.8 LBS.
Length 4.71 FT.
Max. Diameter 2.750 IN.

Slim Hole Centralizer

Weight 22 LBS.
Length 3.08 FT.
Max. Diameter 2.750 IN.

Sector Bond

Weight 89.2 LBS>
Length 10.32 FT.
Max. Diameter 2.750 IN.



SBT Rx 7.77 FT.

3' Rx 7.28 FT.

5' Rx 6.28 FT.

2.750 in. dia.
(6.985 cm)

Slim Hole Centralizer

Weight 15.0 LBS.
Length 2.82 FT.
Max. Diameter 2.750 IN.

Tool Zero

COMPANY BILL BARRETT CORPORATION

WELL JCJ 11D-21-692

FIELD MAMM CREEK

COUNTY GARFIELD

STATE COLORADO



Weatherford®