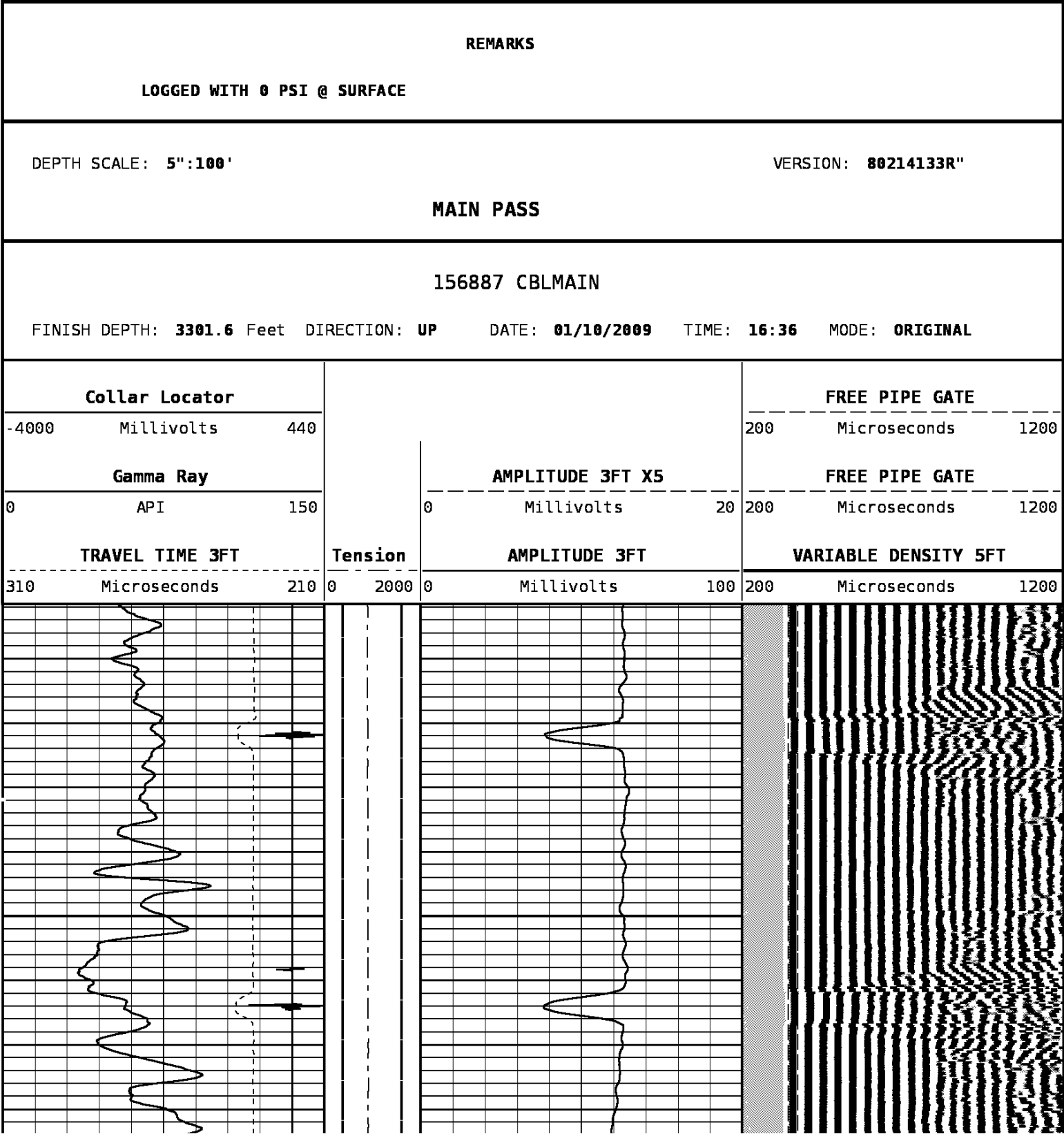


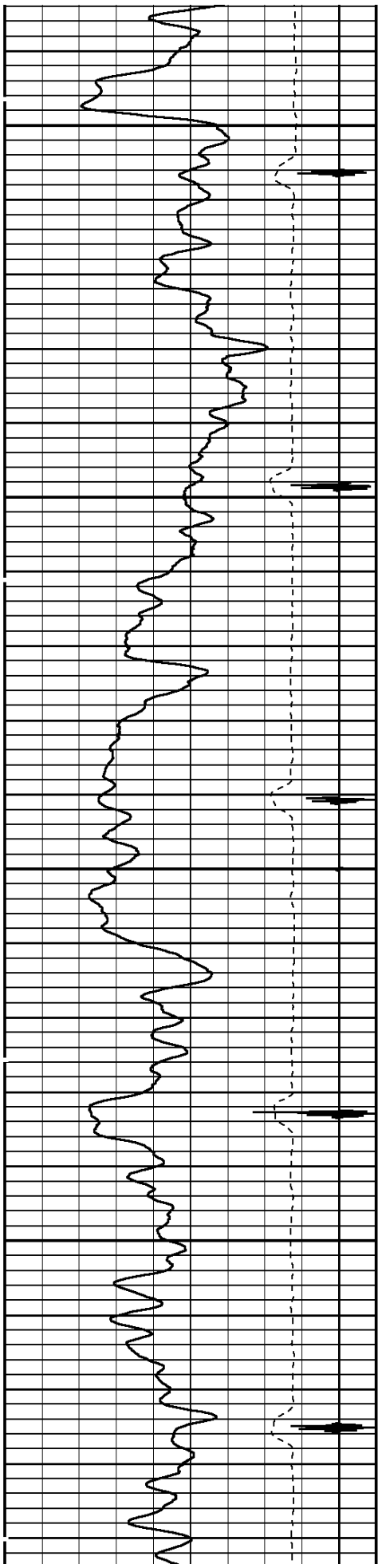
| | | | | | | | | | |
|---|----------------|---|-------|---|------|-------------|--------|--|--|
| COMPANY BILL BARRETT CORPORATION WELL JCJ 11B-21-692 | | | | | | | | | |
| FIELD MAMM CREEK CNTY GARFIELD STATE CO | | | | | | | | | |
| COMPANY BILL BARRETT CORPORATION WELL JCJ 11B-21-692 FIELD MAMM CREEK COUNTY GARFIELD STATE COLORADO | | | | | | | | | |
| LOCATION: UNKNOWN | | OTHER SERVICES: JB/GR 3.781" @ 7701' PND | | | | | | | |
| SEC. 21 | TWP. 6S | RGE. 92W | | ELEV.: K.B. 5697' D.F. 5696' G.L. 5680' | | | | | |
| PERM., DATUM GROUND LEVEL | | | | ELEV. 5680' | | ELEV. 5680' | | | |
| LOG MEASURED FROM K.B. 17 FT. ABOVE PERMANENT DATUM | | | | | | | | | |
| DRILLING MEASURED FROM KELLY BUSHING | | | | | | | | | |
| DATE | 10-JAN-2009 | API#: | | 05-045-16863 | | | | | |
| RUN NO. | ONE | | | | | | | | |
| DEPTH DRILLER | 7804' | | | | | | | | |
| DEPTH LOGGER | 7702' | | | | | | | | |
| BTM. LOG INTERVAL | 7696' | | | | | | | | |
| TOP LOG INTERVAL | 3300' | | | | | | | | |
| OPEN HOLE SIZE | 7.875" | | | | | | | | |
| TYPE FLUID | Water Based | | | | | | | | |
| DENS. | VISC. | 8.3 | N/A | | | | | | |
| MAX. REC. TEMP. | F | N/A | | | | | | | |
| EST. CEMENT TOP | 3790' | | | | | | | | |
| TIME WELL READY | ROA | | | | | | | | |
| TIME LOGGER ON BTM. | SEE LOG | | | | | | | | |
| EQUIP. NO. | 14113 | | | | | | | | |
| LOCATION | GRAND JUNCTION | | | | | | | | |
| RECORDED BY | BRUCE MILLER | | | | | | | | |
| WITNESSED BY | GARY EITER | | | | | | | | |
| BOREHOLE RECORD | | | | TUBING RECORD | | | | | |
| RUN NO. | BIT | FROM | TO | SIZE | WGT. | FROM | TO | | |
| | | | | | | | | | |
| | | | | | | | | | |
| | | | | | | | | | |
| | | | | | | | | | |
| CASING RECORD | SIZE | WT/FT | GRADE | TYPE JOINT | TOP | | BOTTOM | | |
| SURFACE STRING | | | | | | | | | |
| PROT. STRING | | | | | | | | | |
| PROD. STRING | 4.500" | 11.6 | I-80 | | SURF | | 7767' | | |
| LINER | | | | | | | | | |
| SEE REMARKS | | | | | | | | | |

All interpretations of log data are opinions based on inferences from electrical or other measurements. We do not guarantee the accuracy or correctness of any interpretation or recommendation and we shall not be liable or responsible for any loss, cost, damages or expenses incurred or sustained by anyone resulting from any interpretation or recommendation made by any of our employees or agents.

| | | | | | |
|--|-----------|-------------------|-----------|------------------------|-------|
| REMARKS | | Rig: CRANE #15062 | | Service Order # 156887 | |
| LOG WAS RUN ON WIRELINE DEPTHS USEING A 17' K.B. | | | | BHT | °F |
| SHORT JOINTS WERE FOUND @ 5643'-5671' AND 7316.5'-7345'. | | | | | |
| EST. TOP OF CEMENT WAS FOUND @ 3790'. | | | | | |
| WELL WAS LOGGED WITH 0 PSI @ SURFACE. | | | | Prints: 4 | |
| YOUR CREW TODAY IS: JOHN YANC AND PAUL KRUGER. | | | | | |
| THANK YOU FOR CHOOSING WEATHERFORD WIRELINE, GRAND JUNCTION, CO. 970-263-8501. | | | | | |
| | | EQUIPMENT DATA | | | |
| Bit Size | 7.875" | Run No. | Tool Type | Tool No. | Other |
| Well Status | NEW DRILL | ONE | CTBA | 172 | |
| Surface Pressure | | ONE | GRBA | 172 | |
| Shut In | Flowing | ONE | CENB | 257 | |
| 0 PSI | NO | ONE | SBTA | 339 | |
| | | ONE | CENC | 210 | |
| | | | | | |
| | | | | | |
| | | | | | |
| | | | | | |

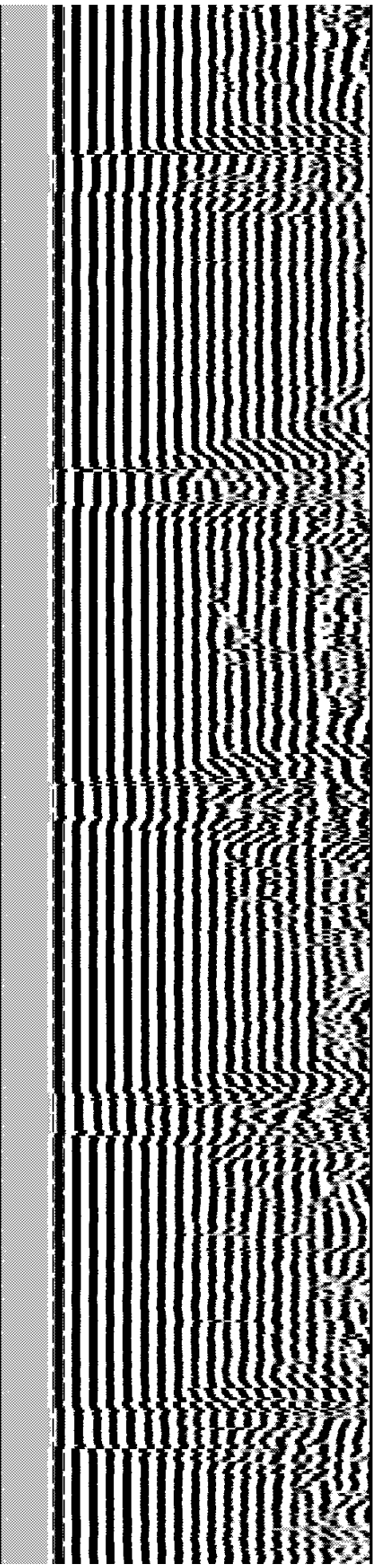
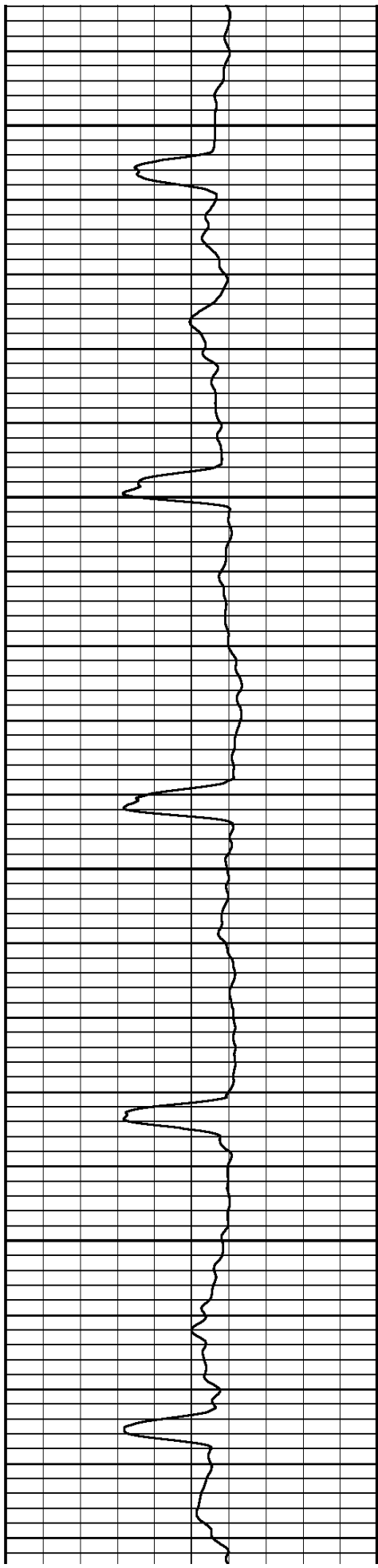
| | | | | | |
|--|--|--|--|--|--|
| | | | | | |
| | | | | | |
| | | | | | |
| | | | | | |

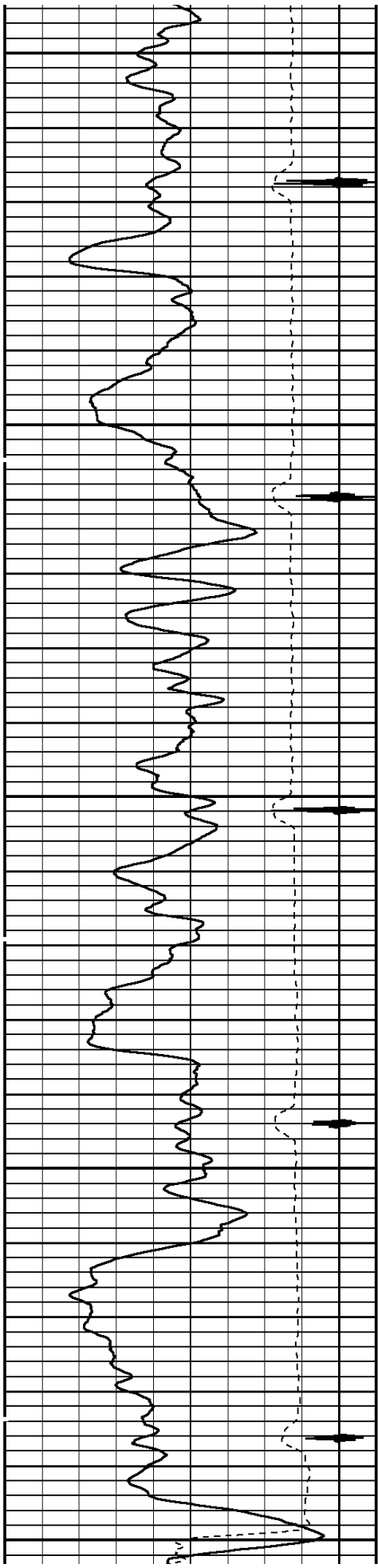




3400

3500

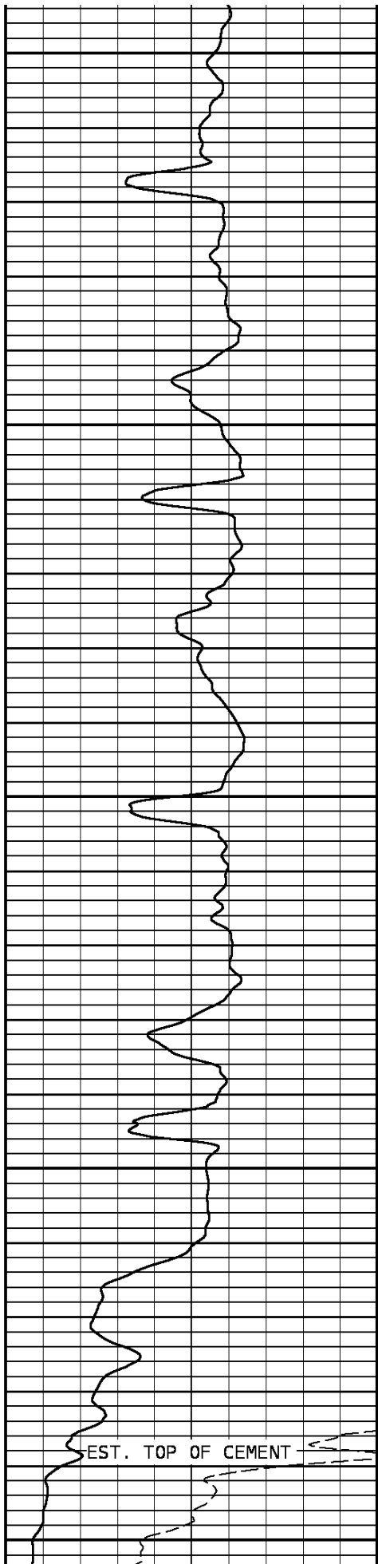




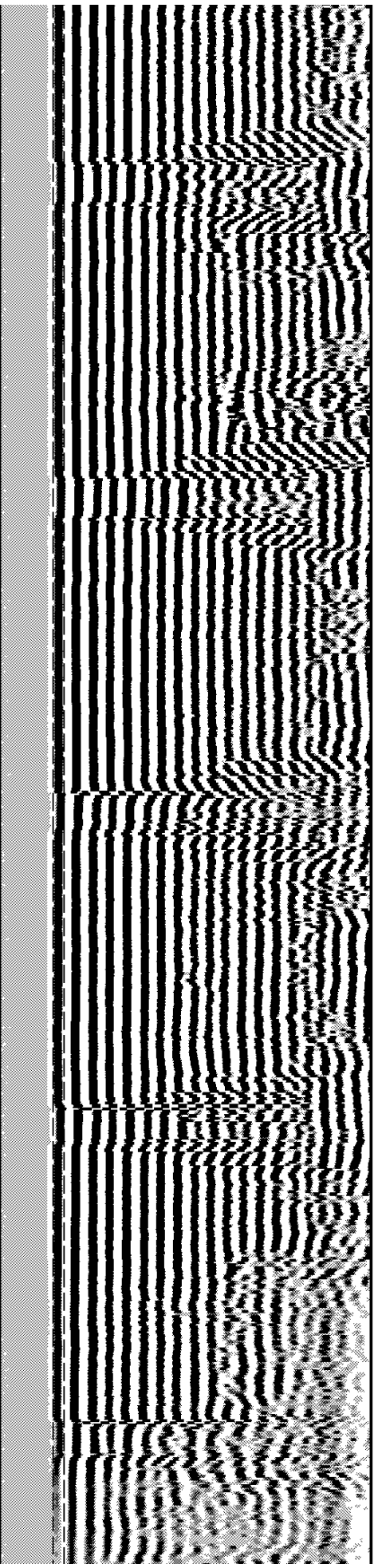
3600

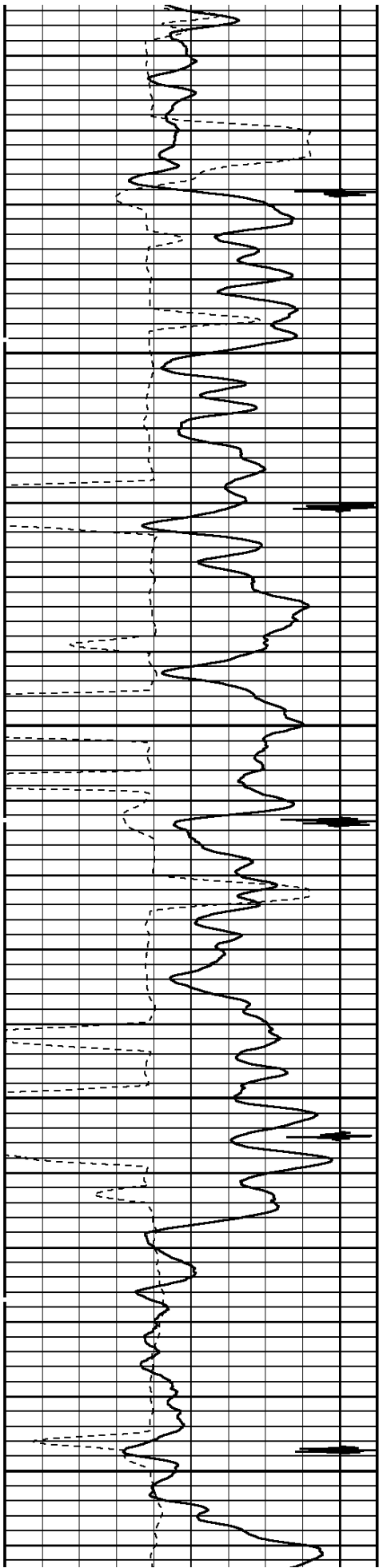
3700

3800



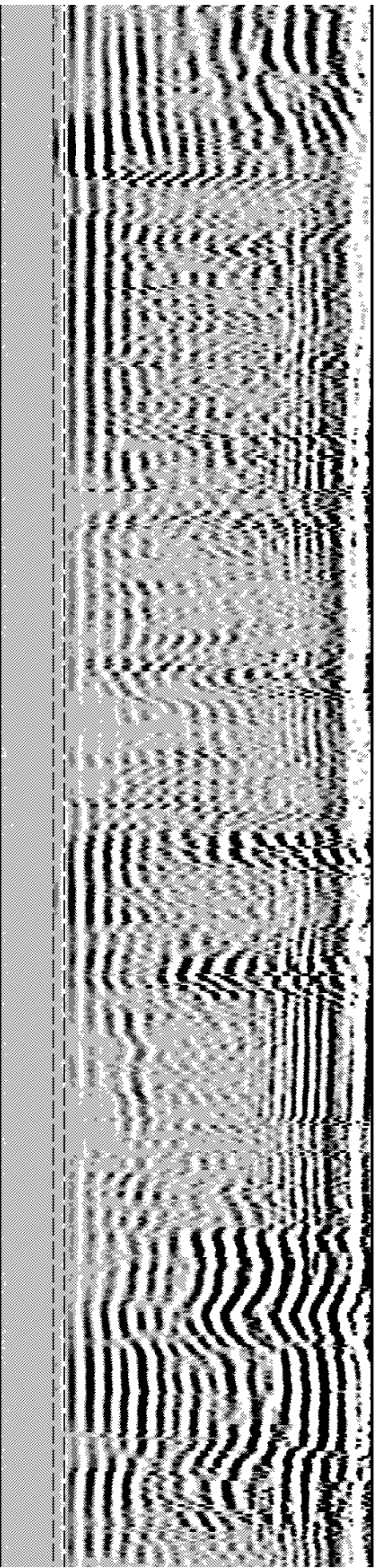
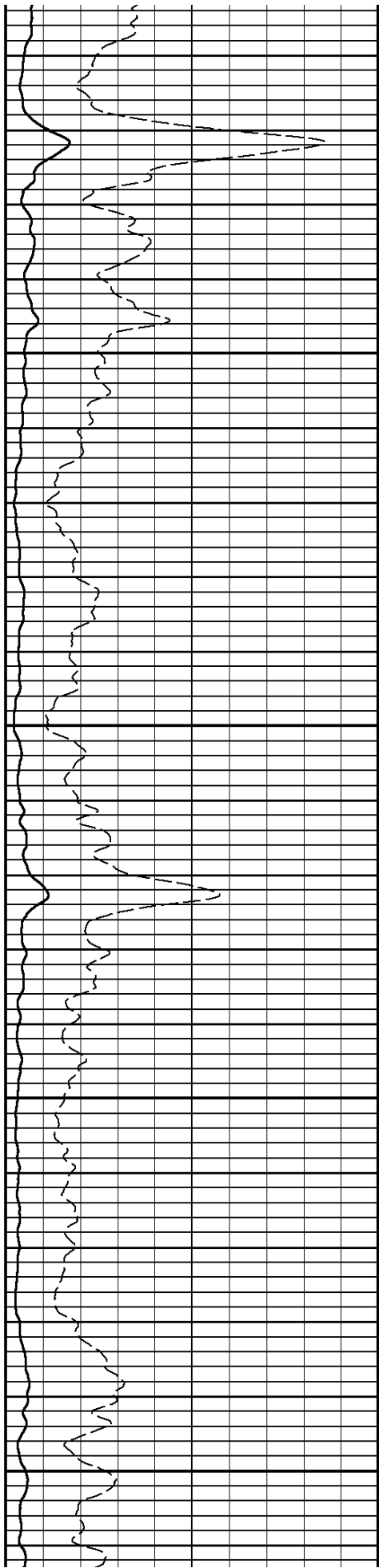
EST. TOP OF CEMENT

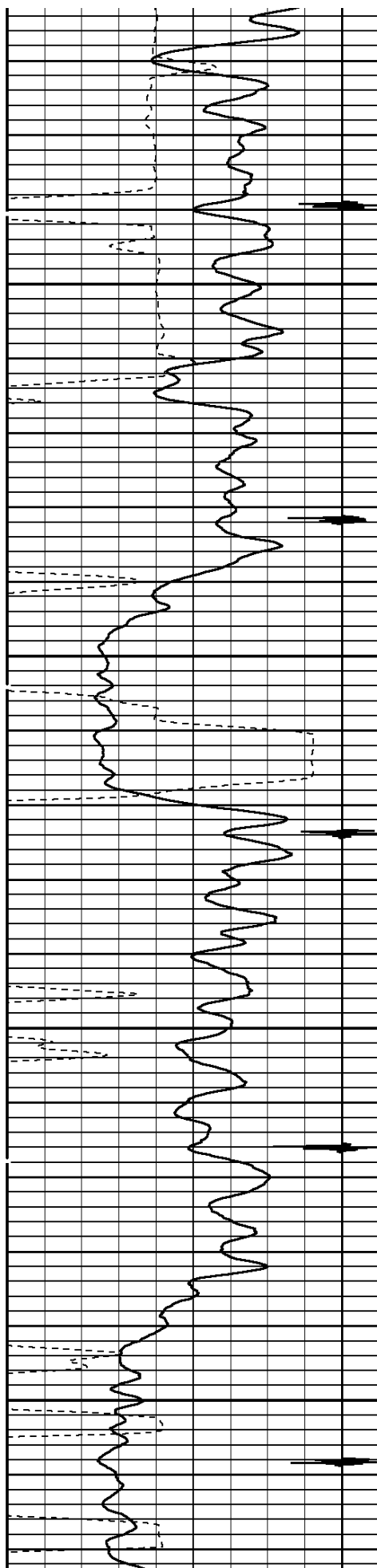




3900

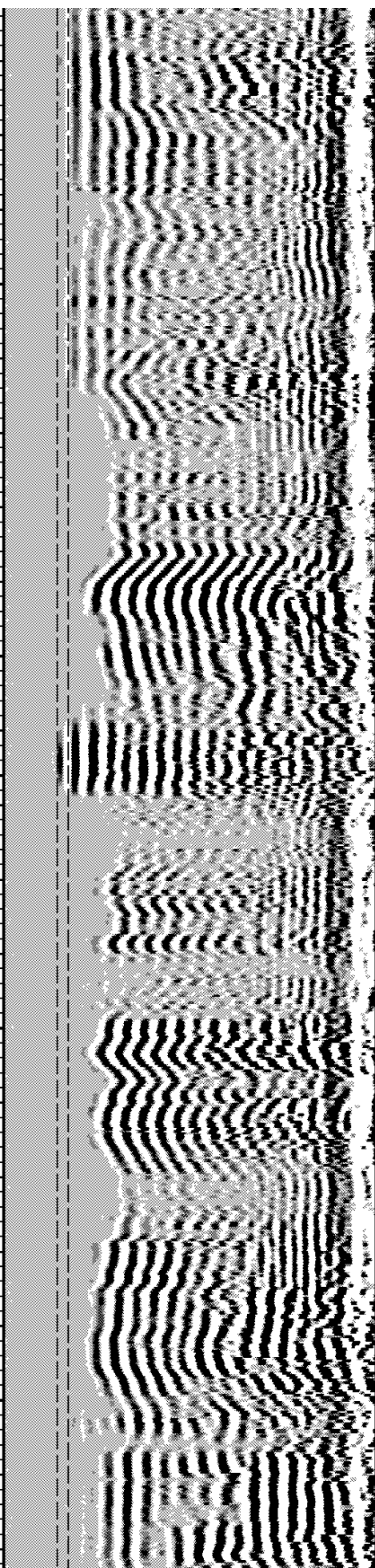
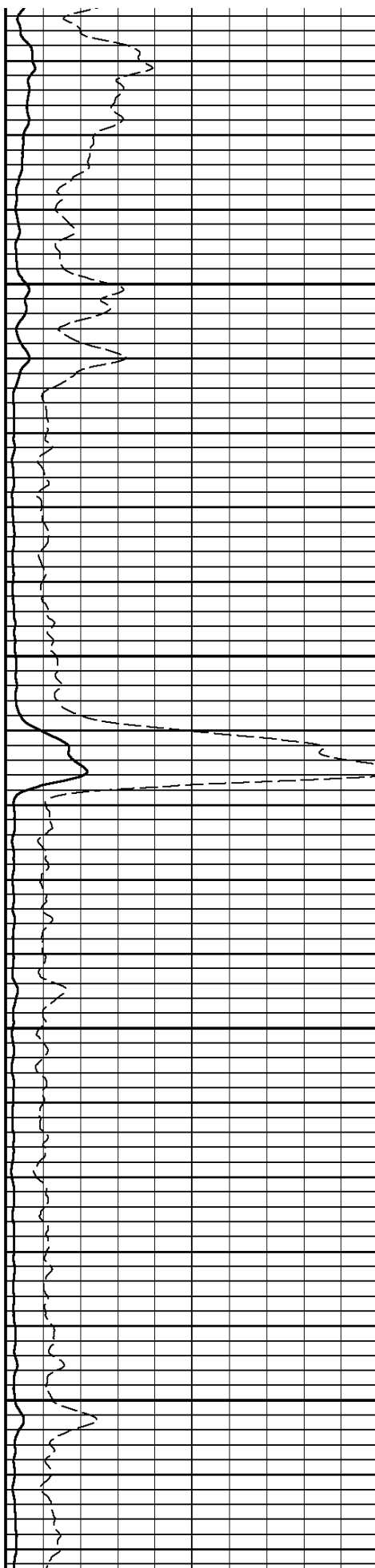
4000

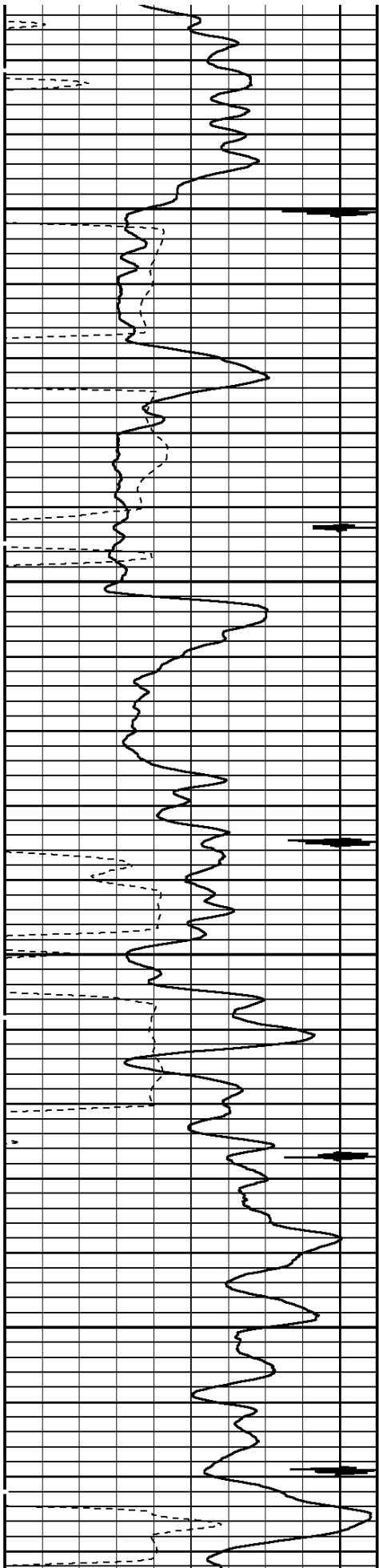




4100

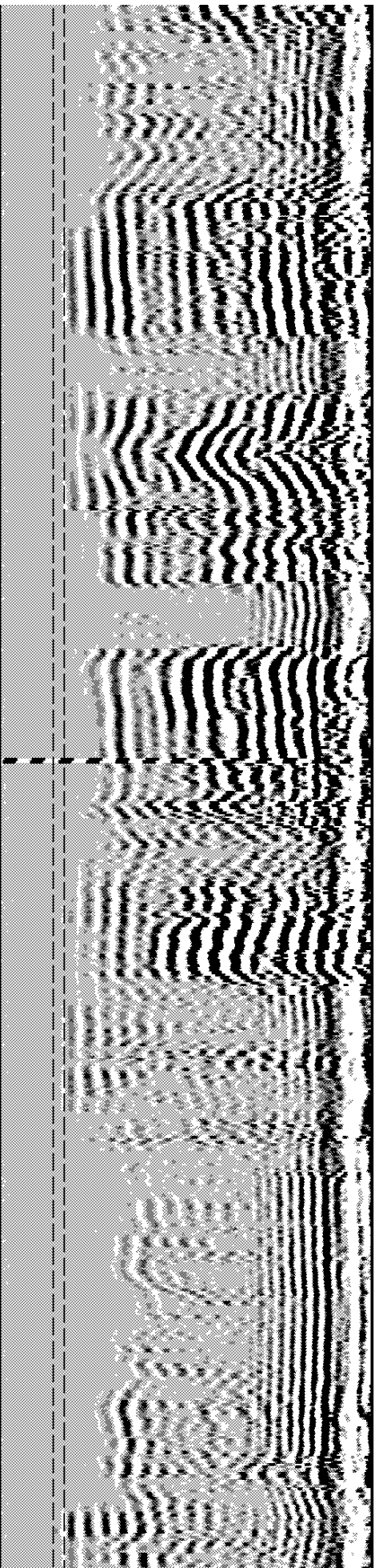
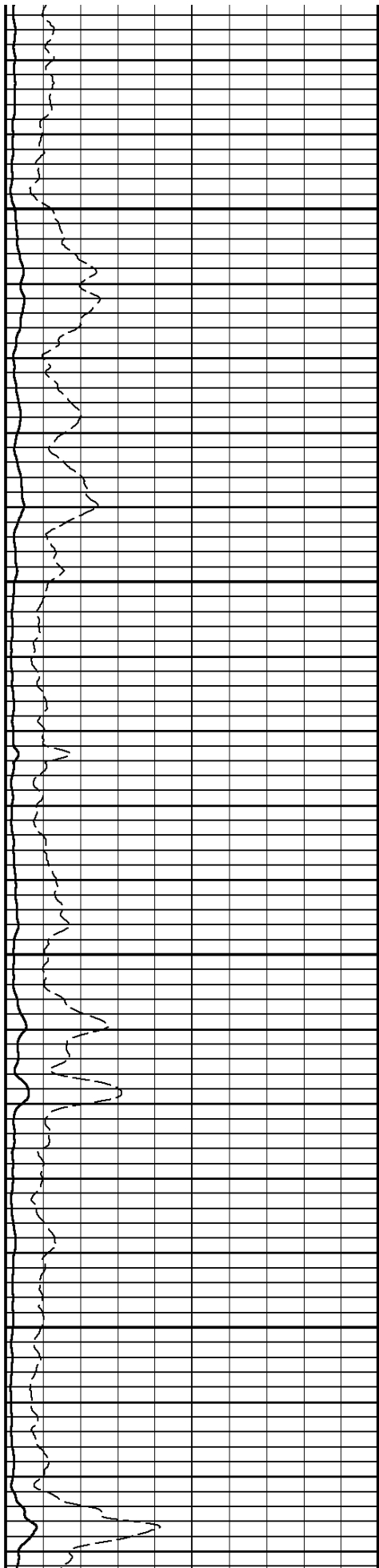
4200

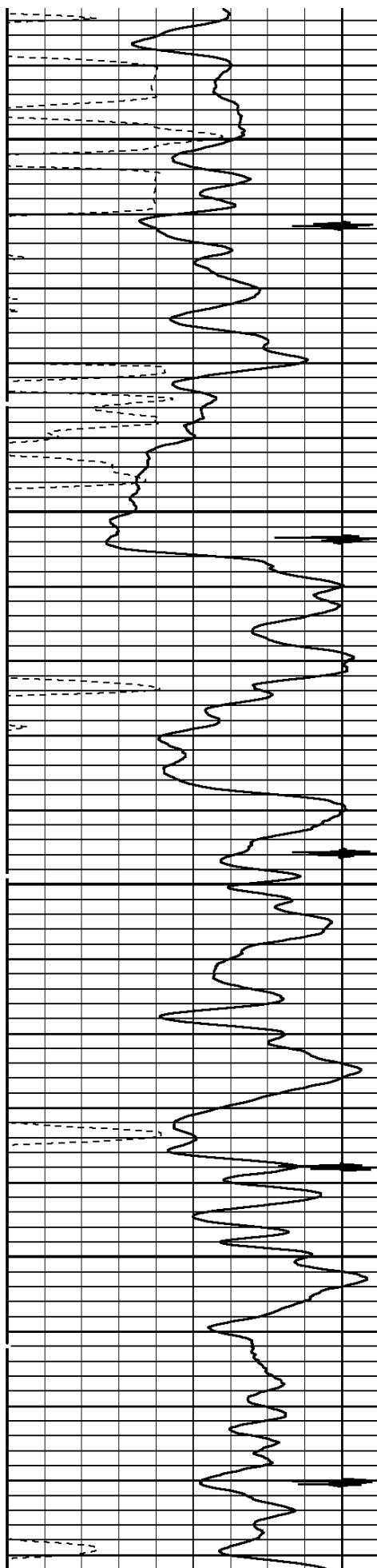




4300

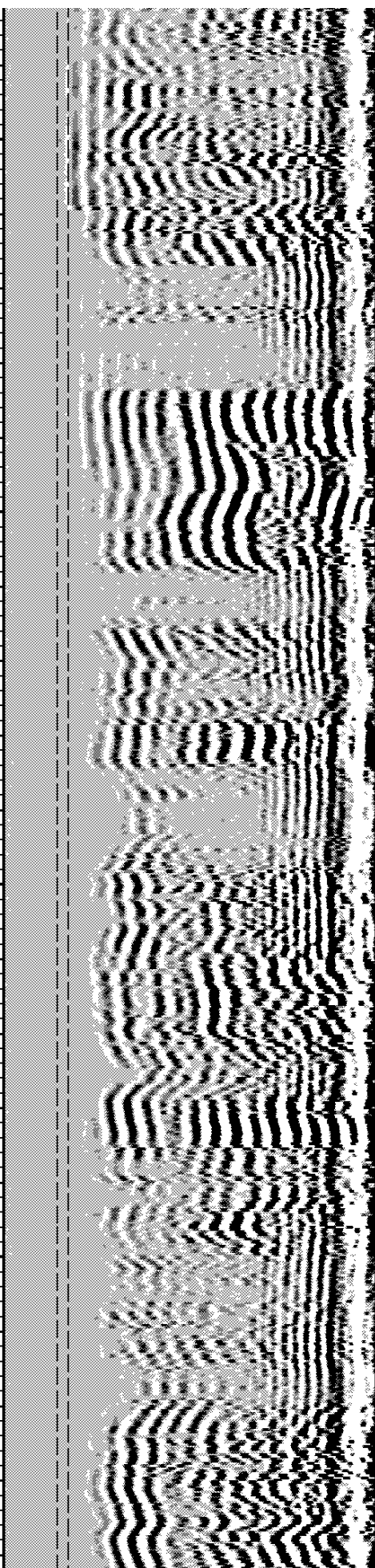
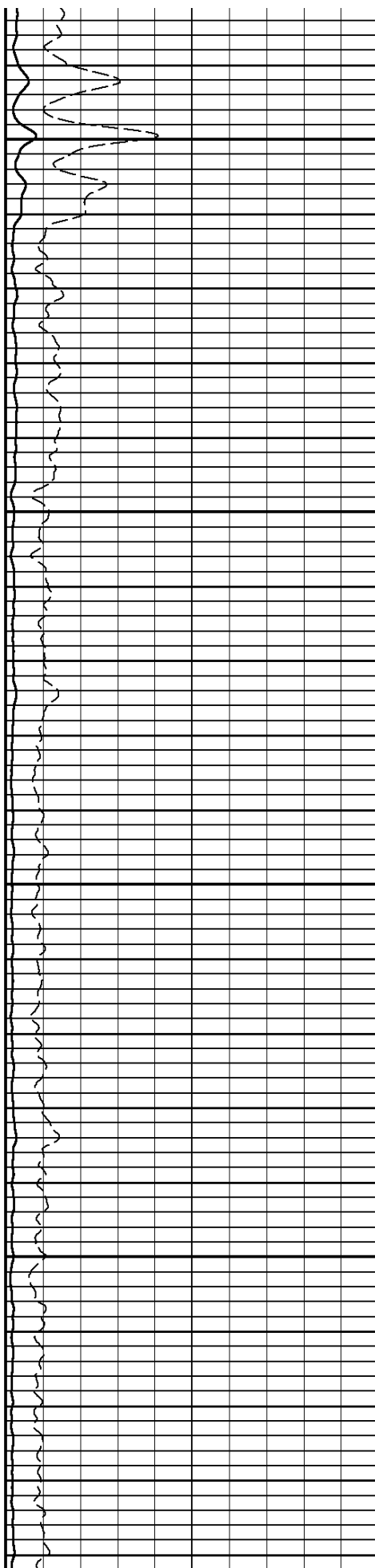
4400

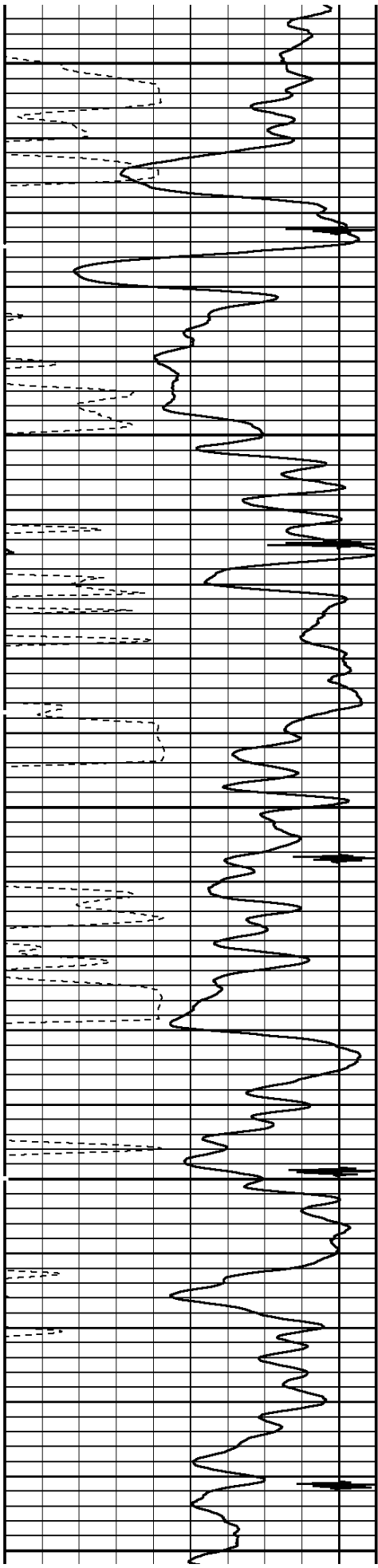




4500

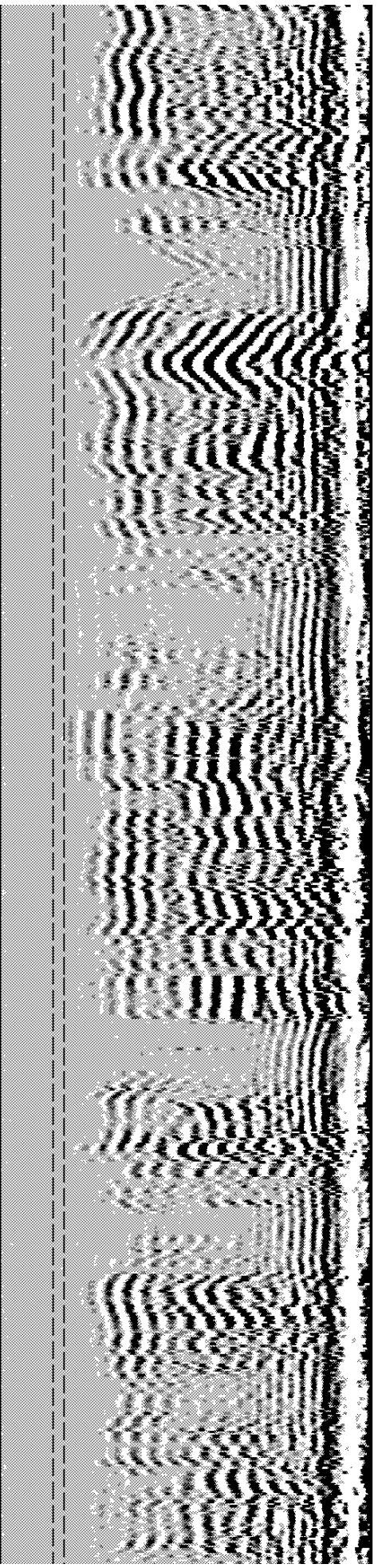
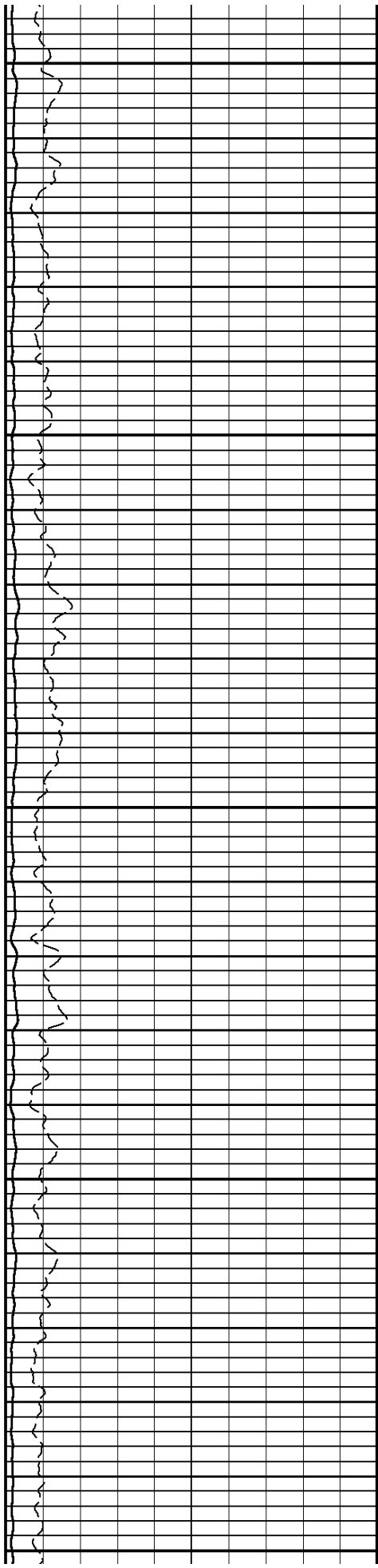
4600

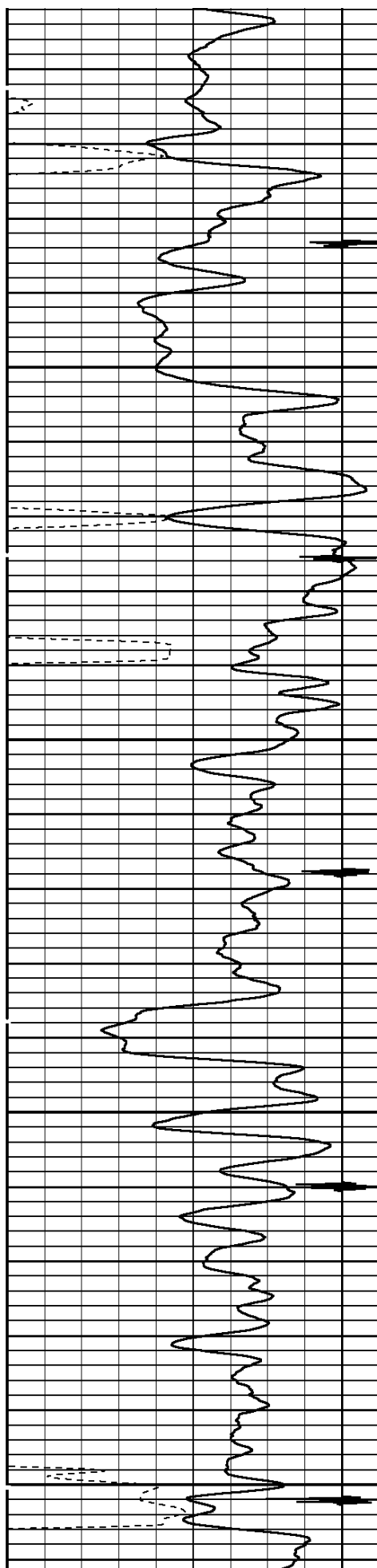




4700

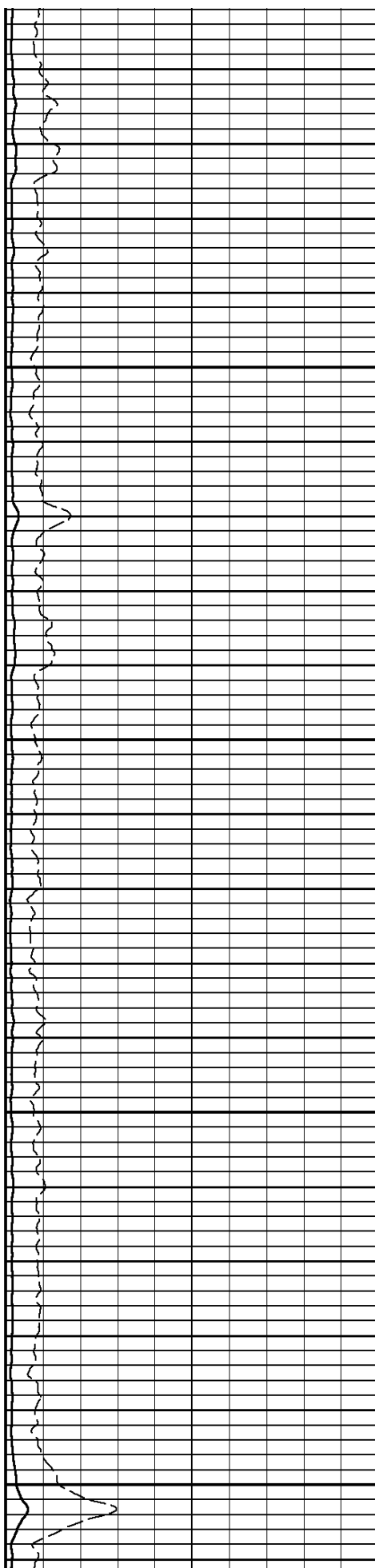
4800

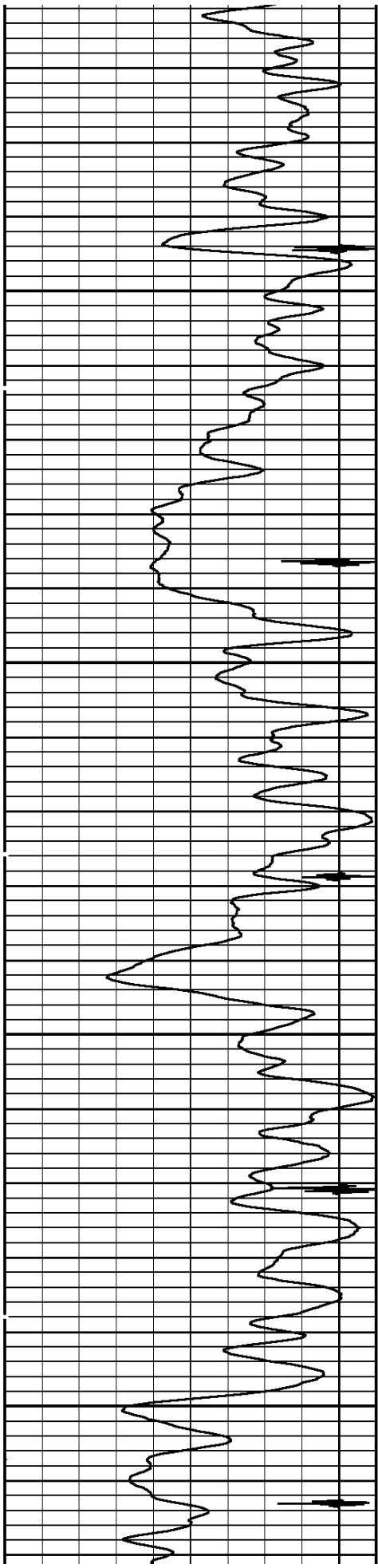




4900

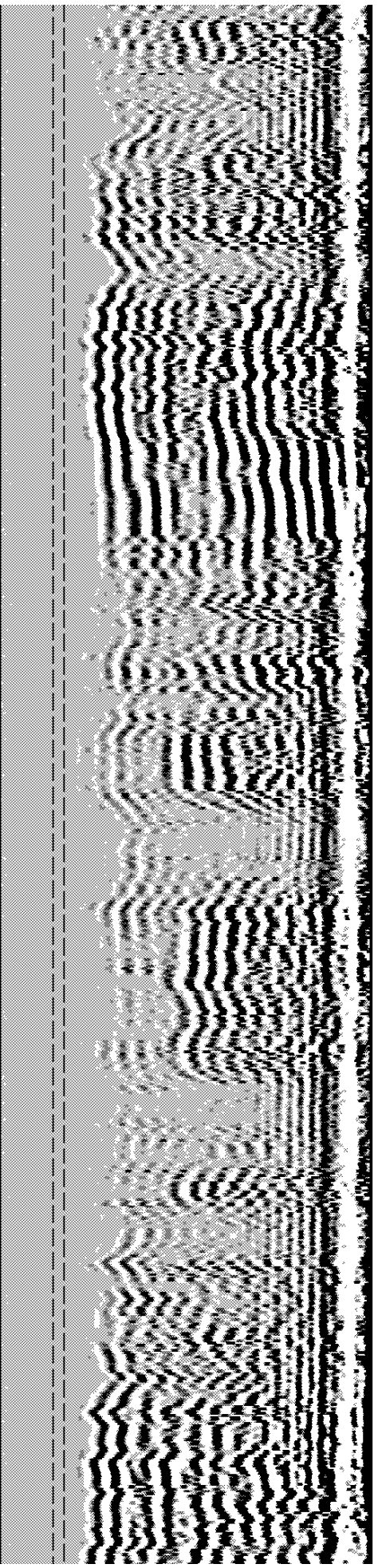
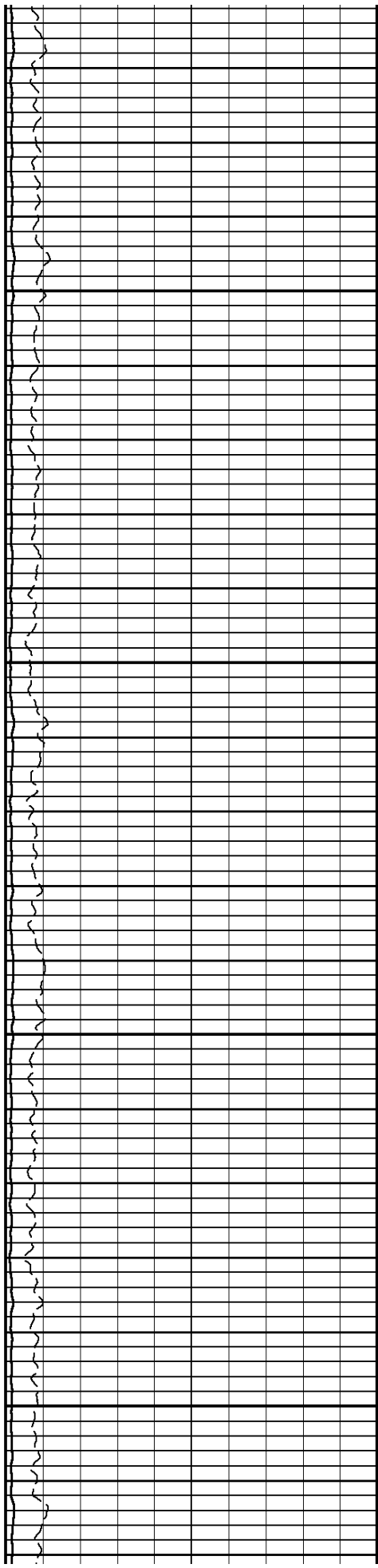
5000

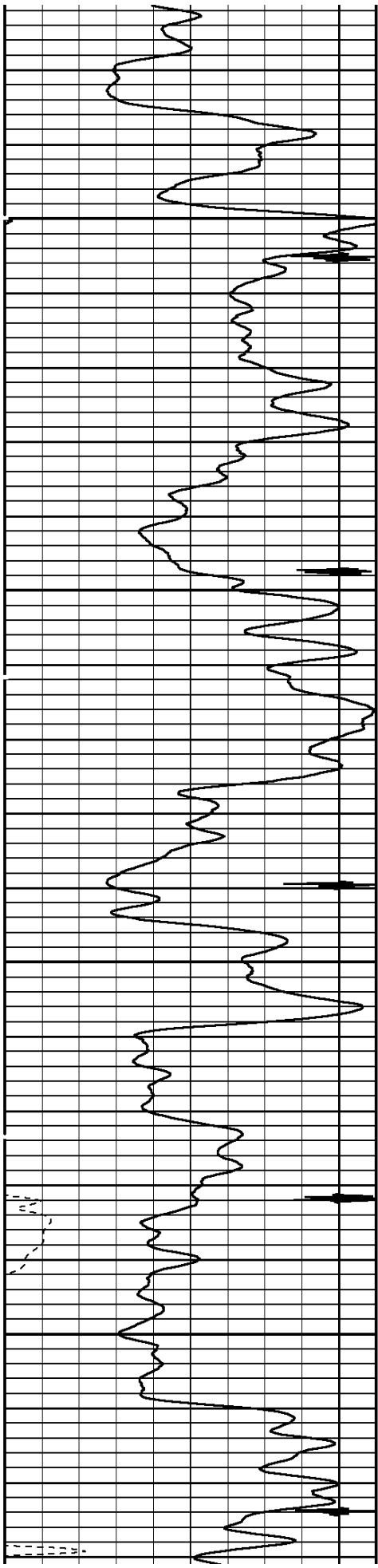




5100

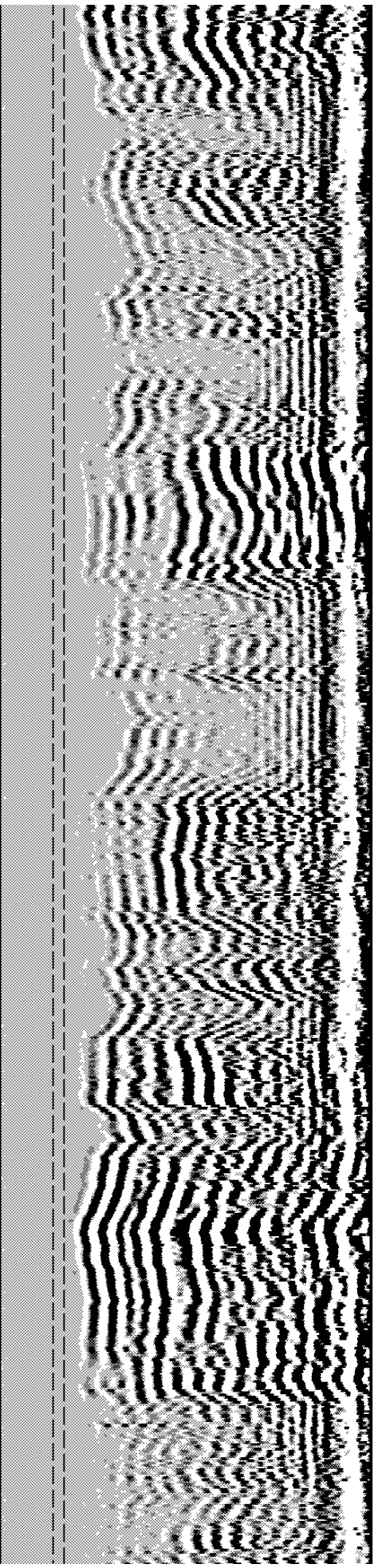
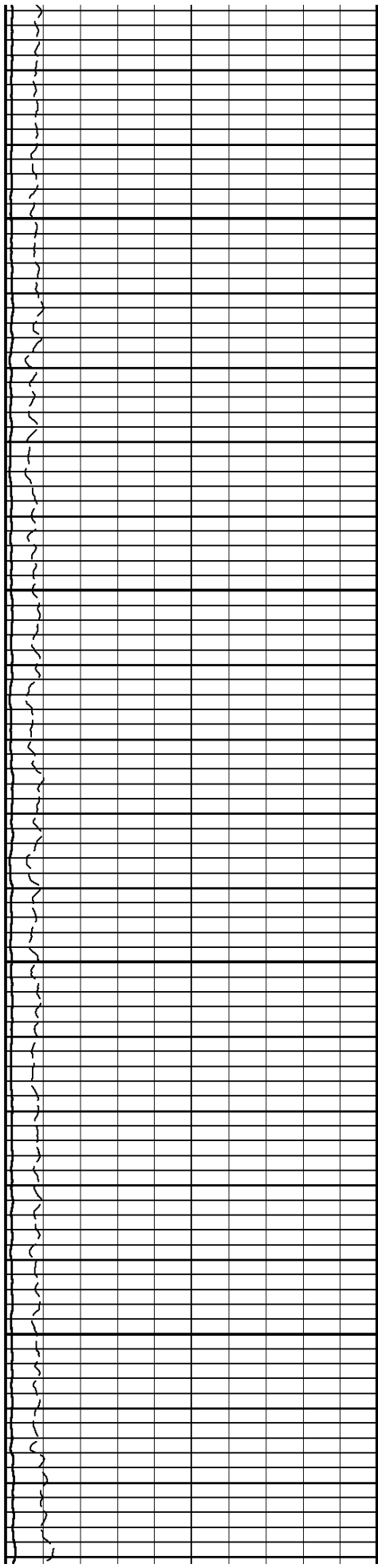
5200

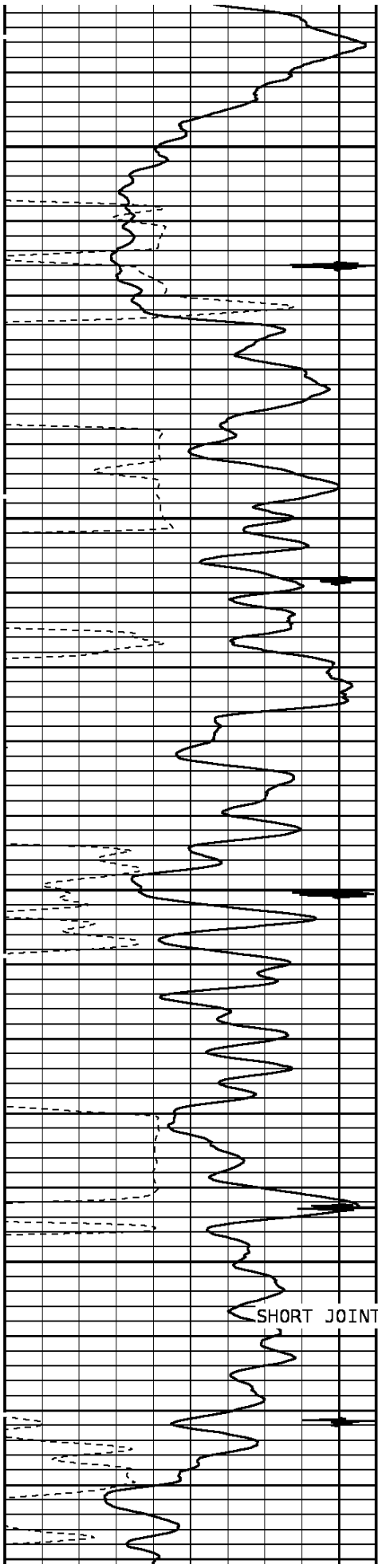




5300

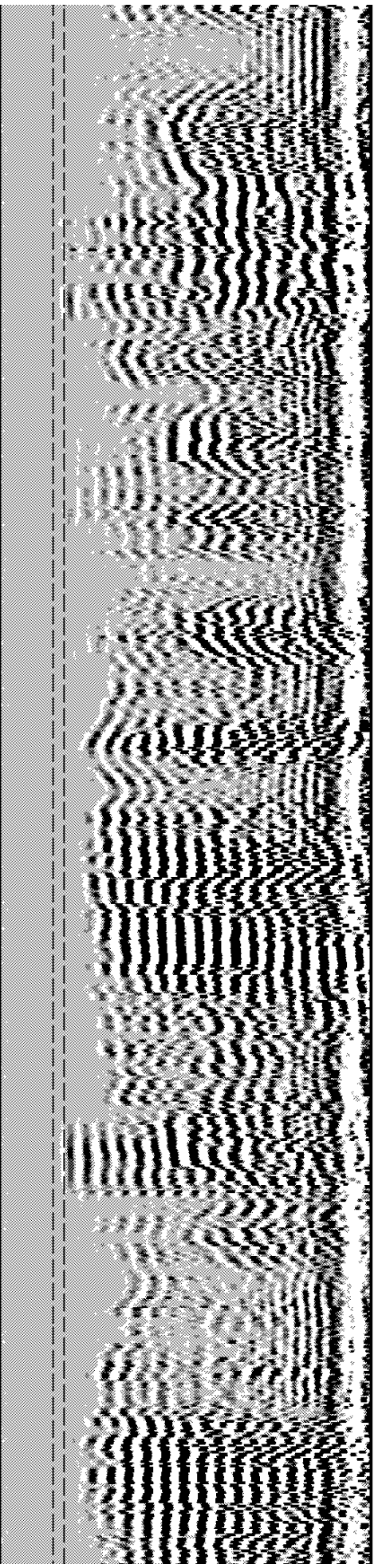
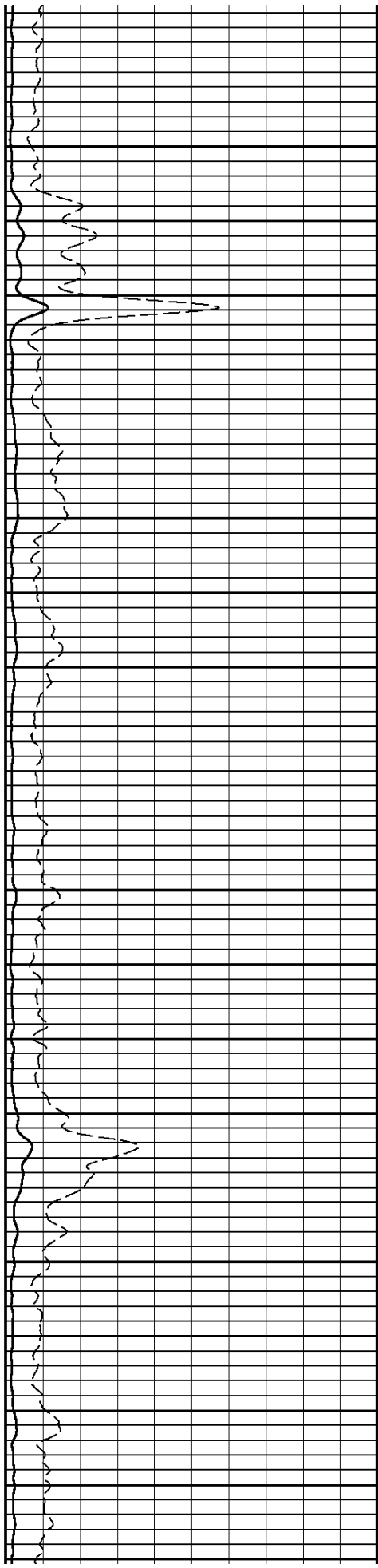
5400

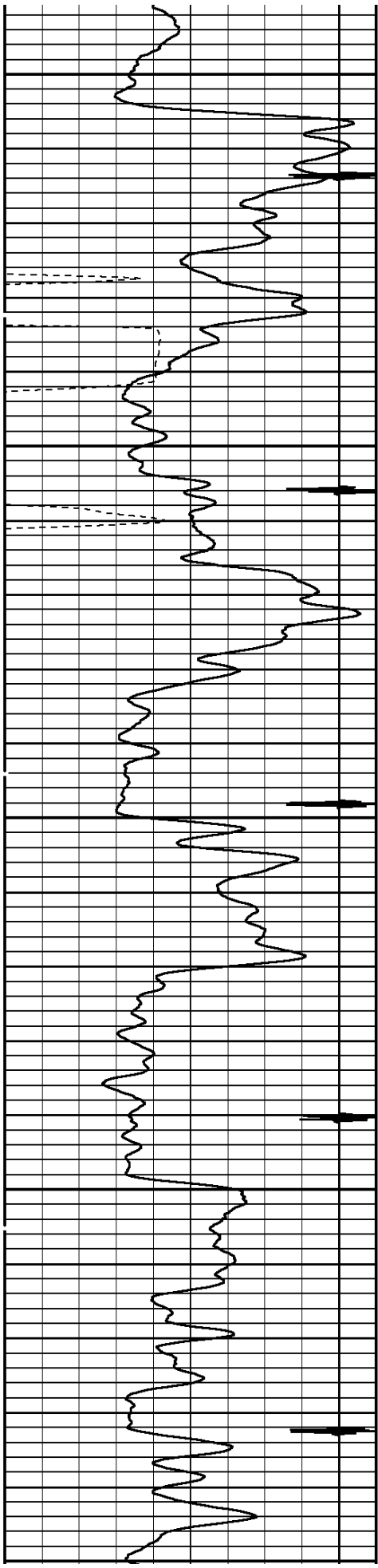




5500

5600

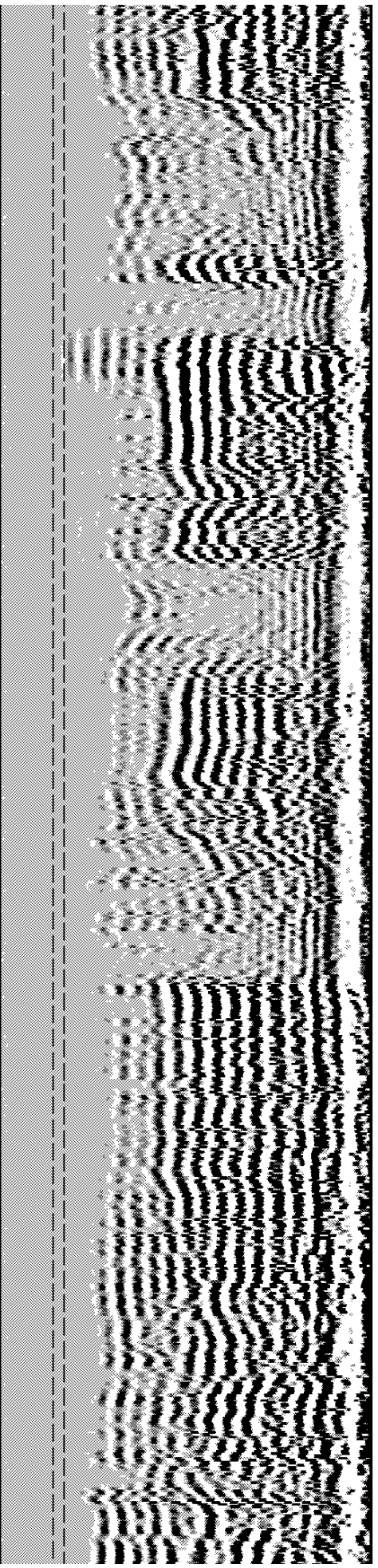
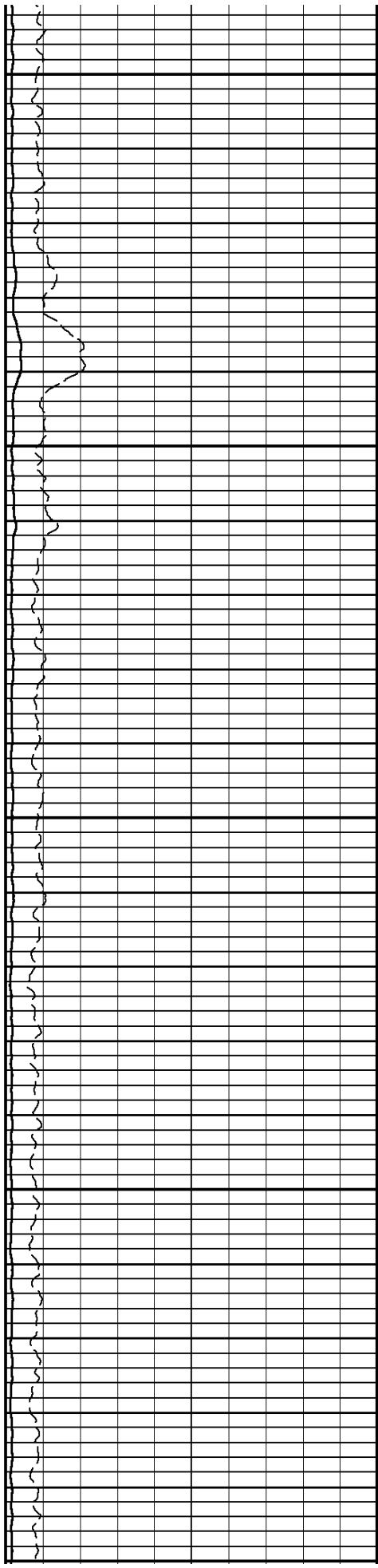


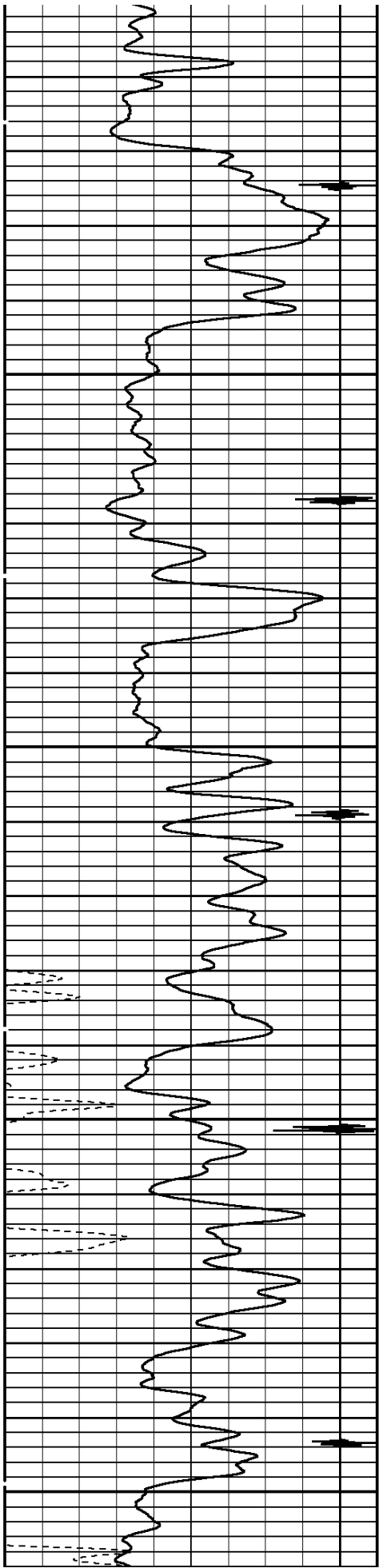


5700

5800

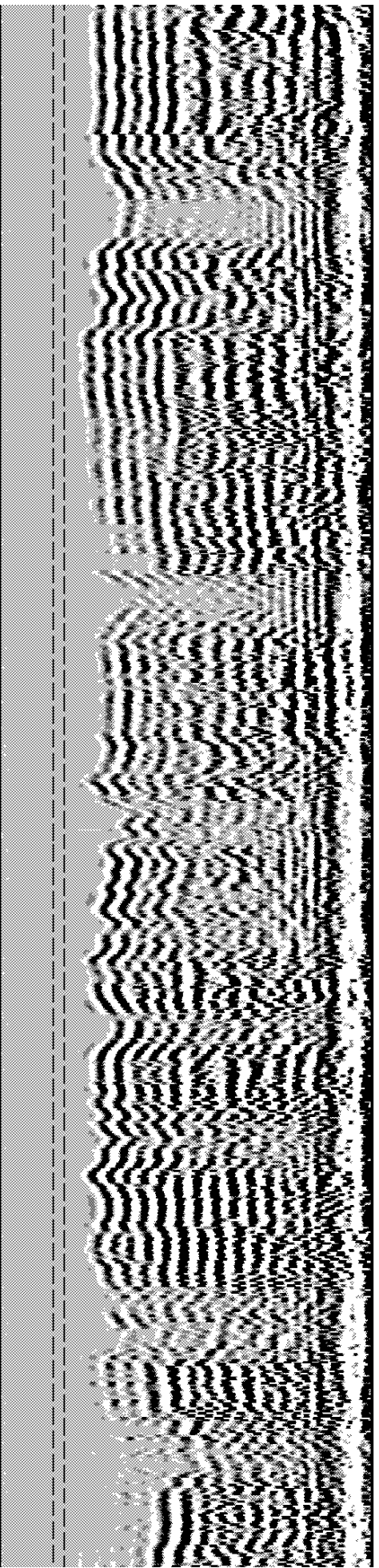
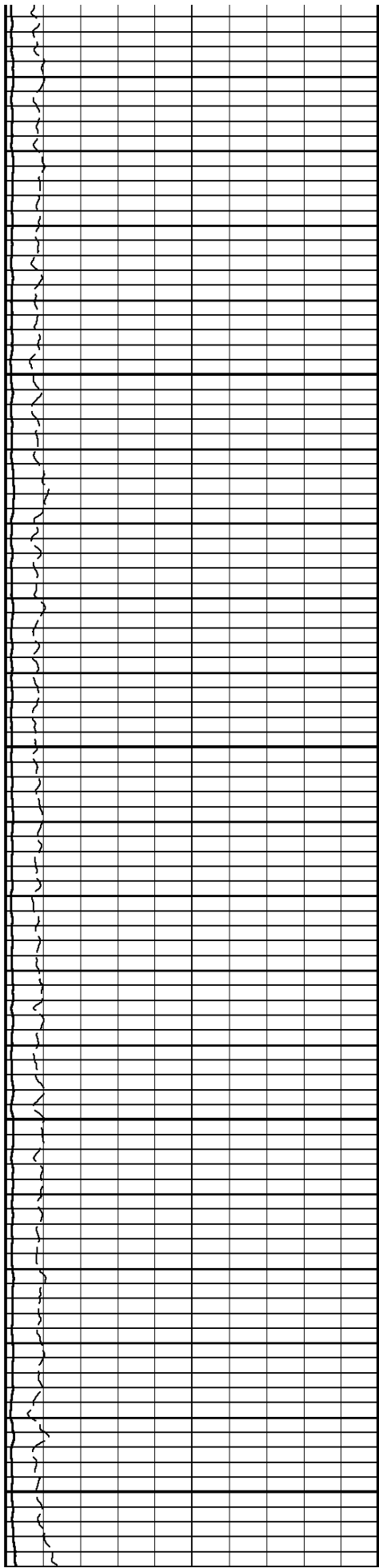
5900

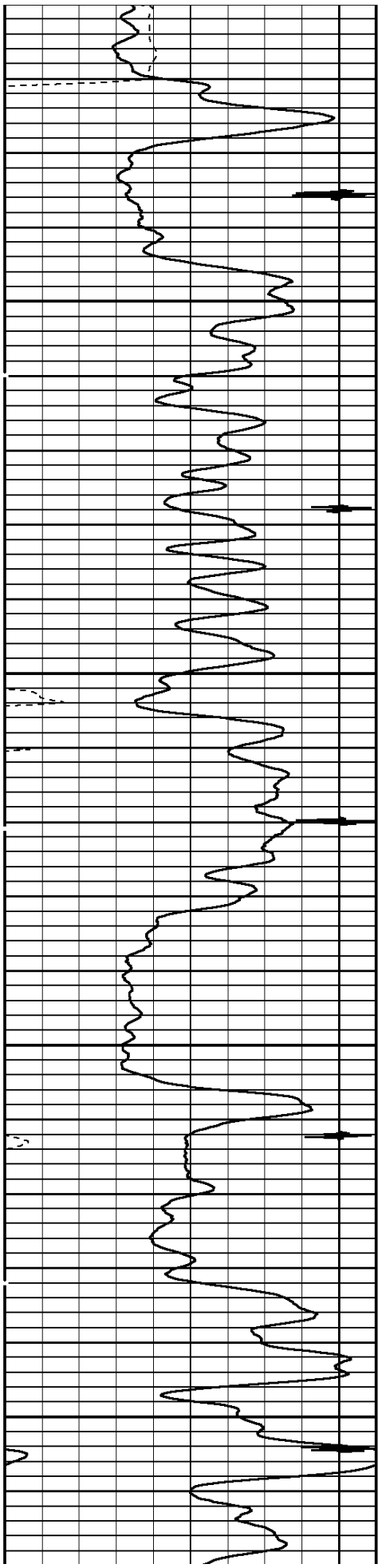




6000

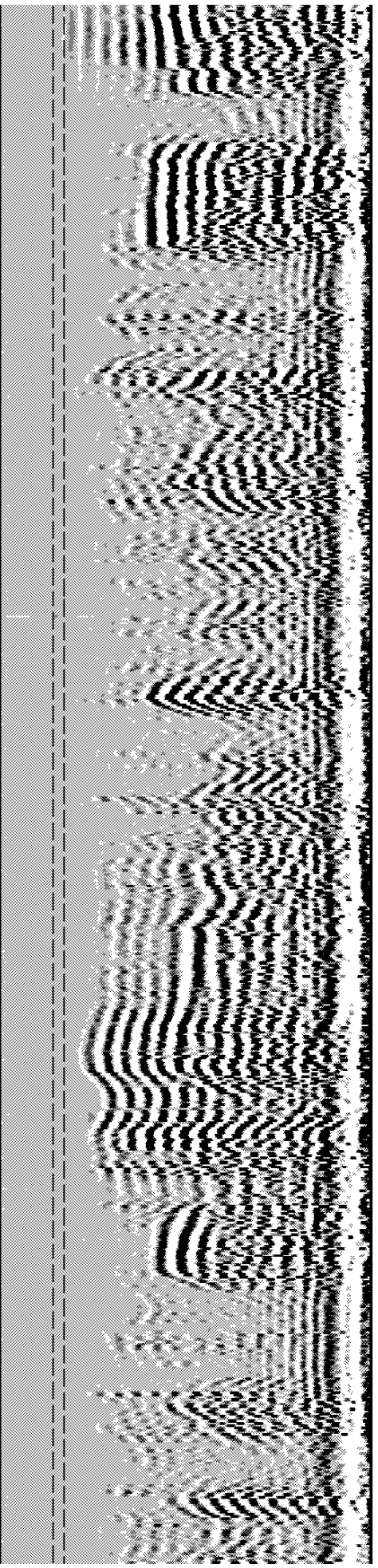
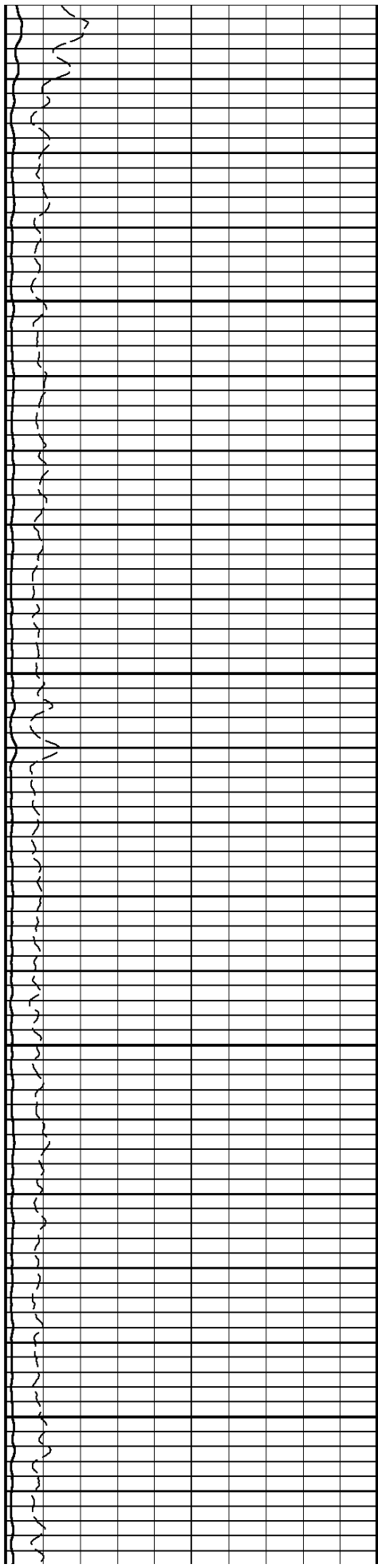
6100

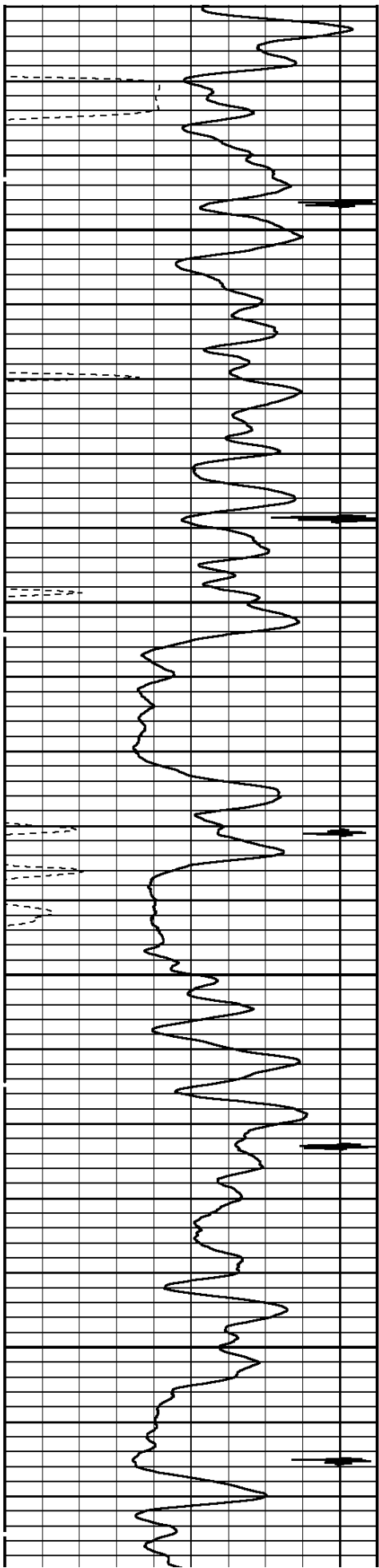




6200

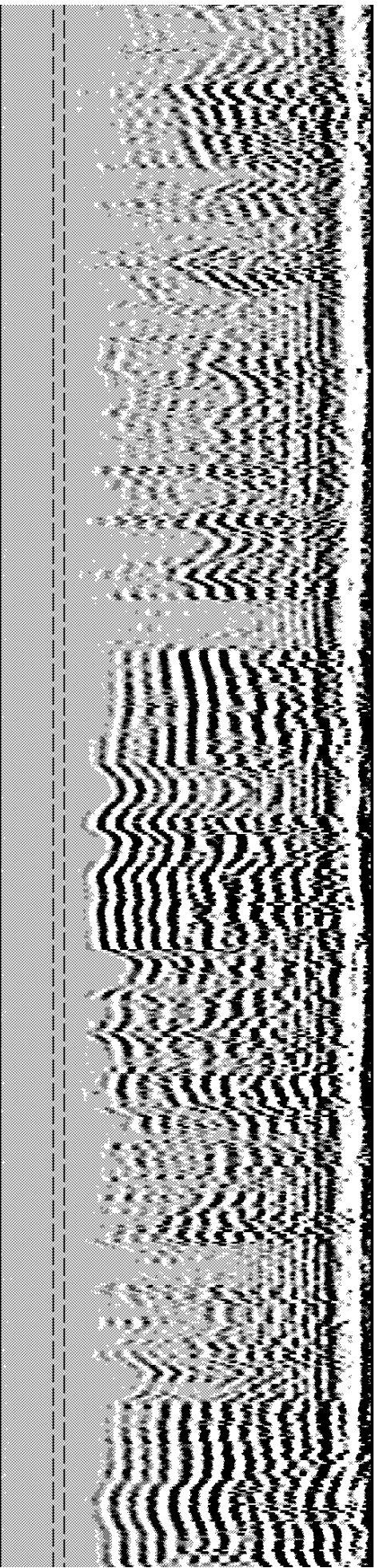
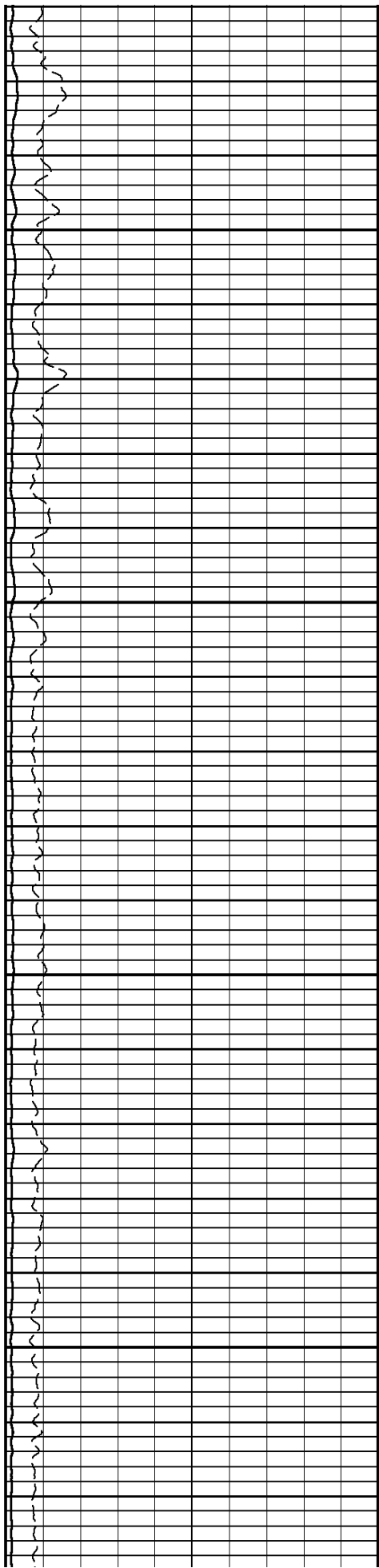
6300

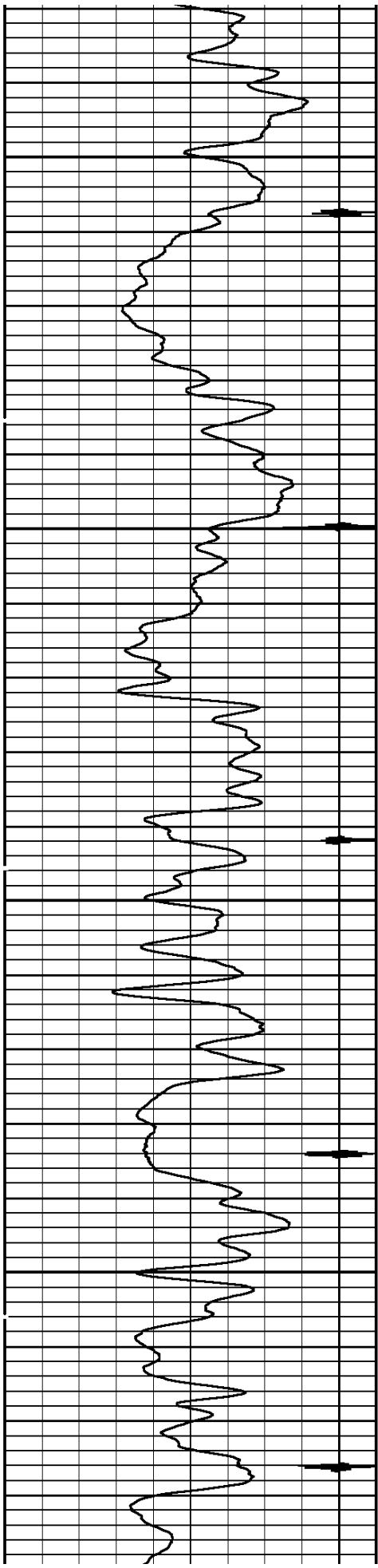




6400

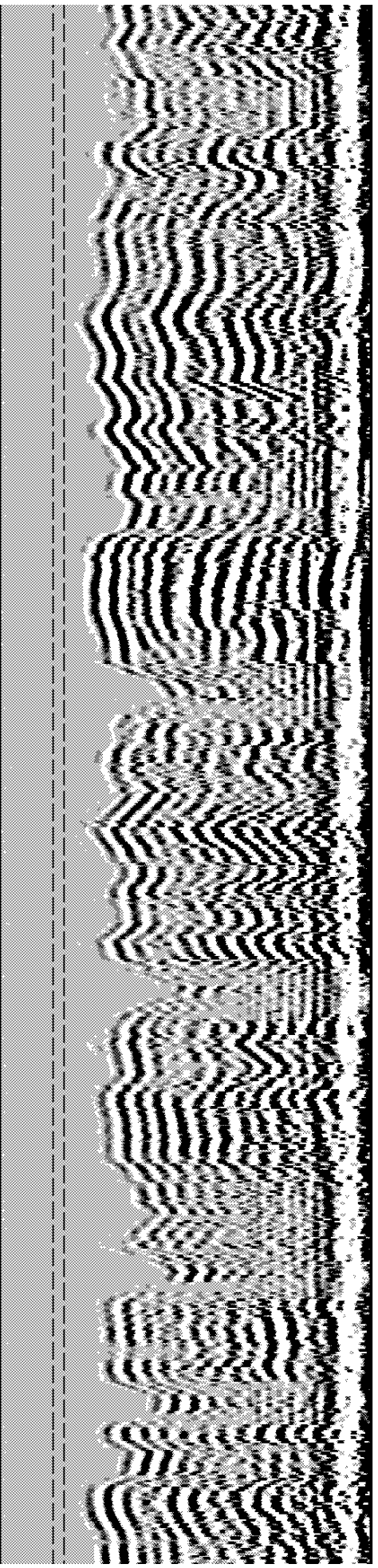
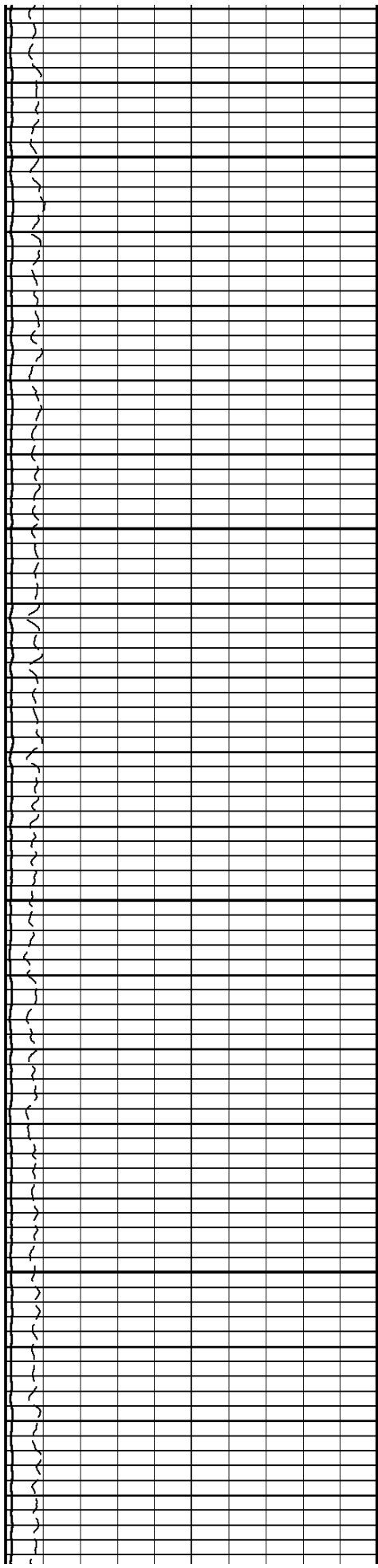
6500

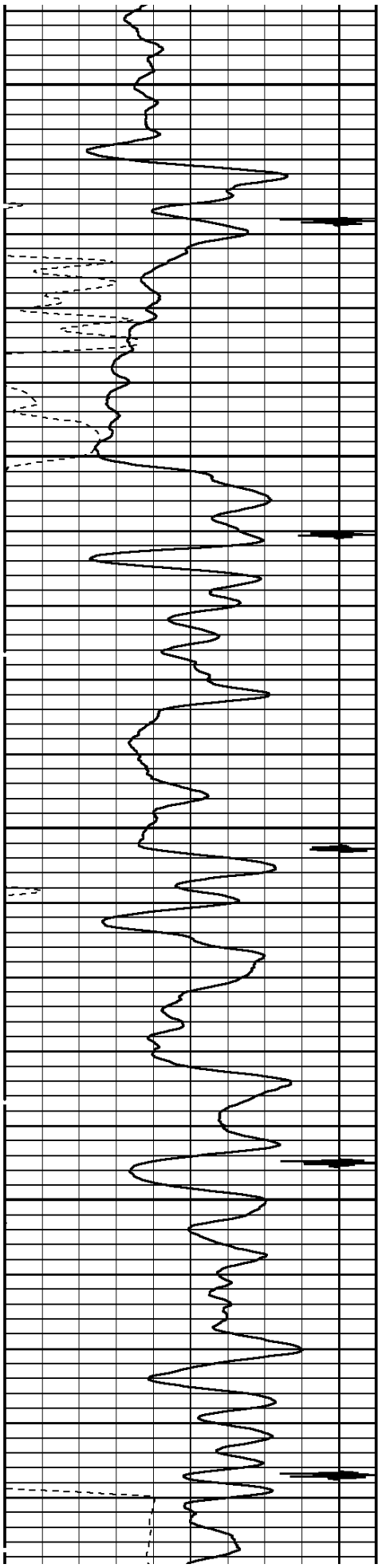




6600

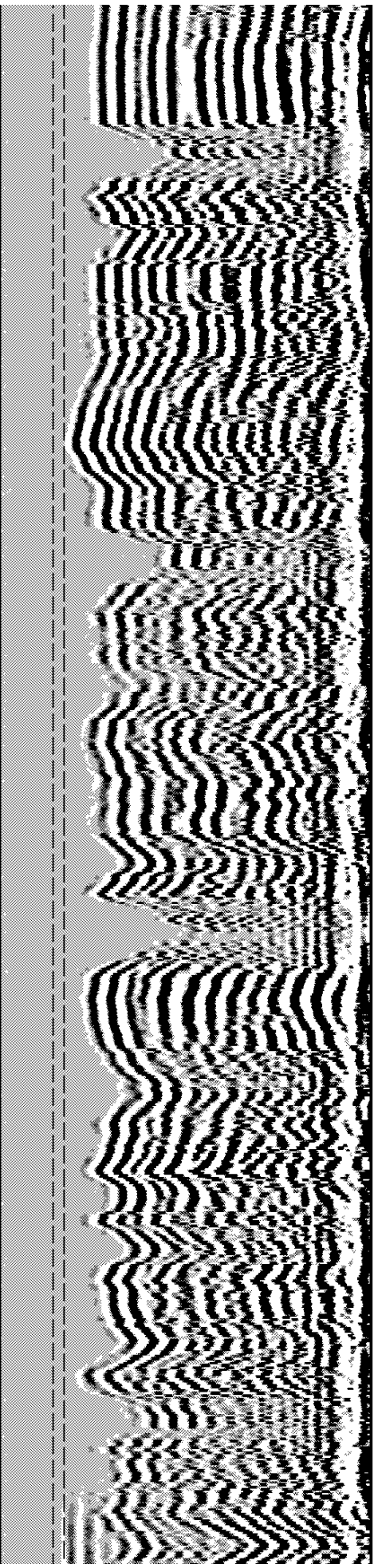
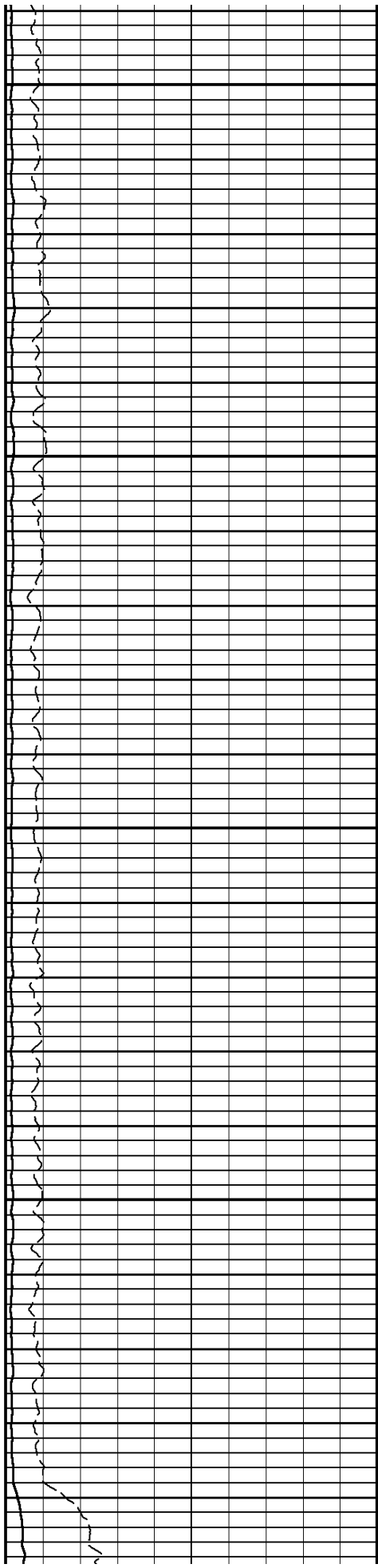
6700

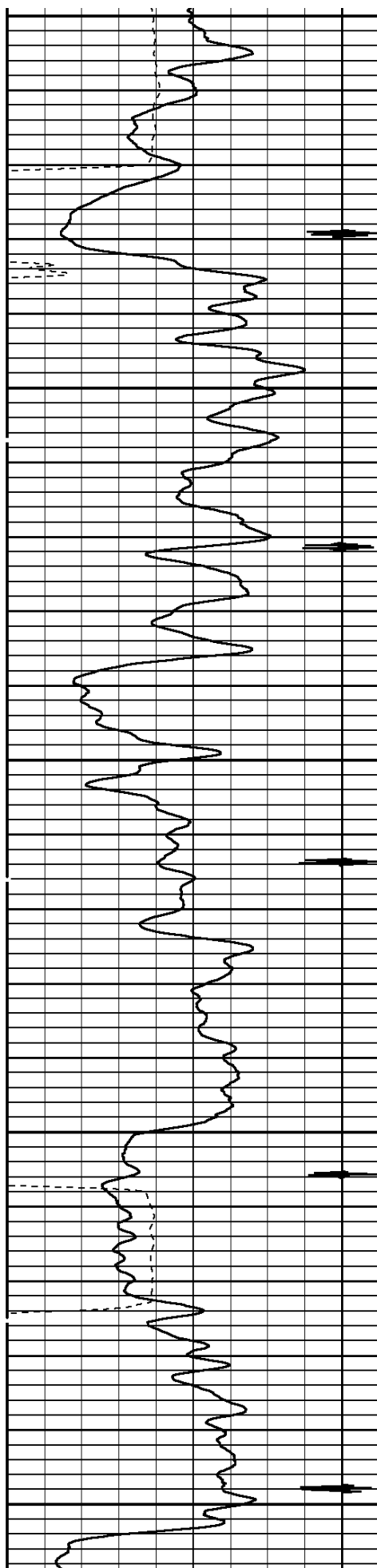




6800

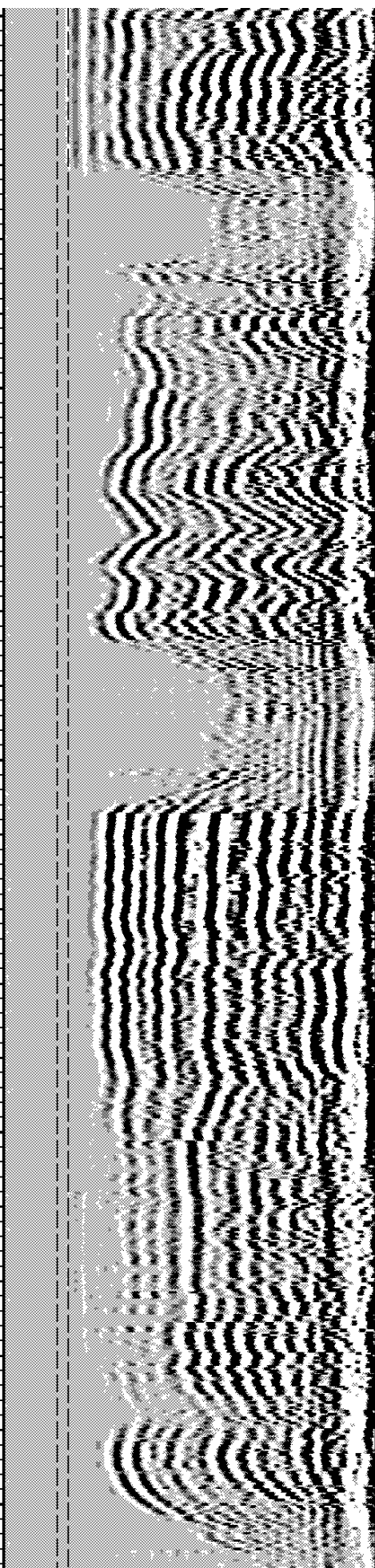
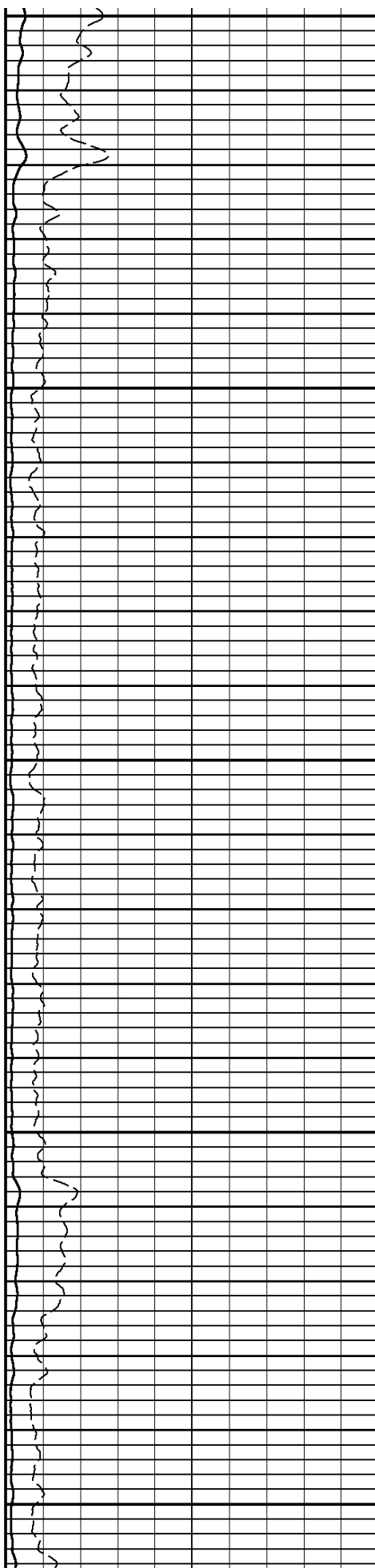
6900

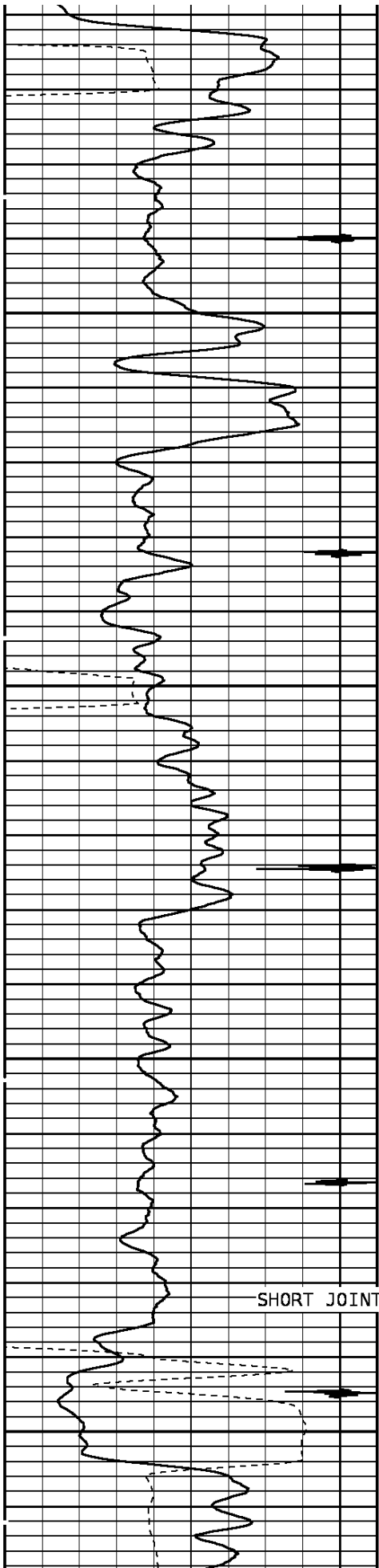




7000

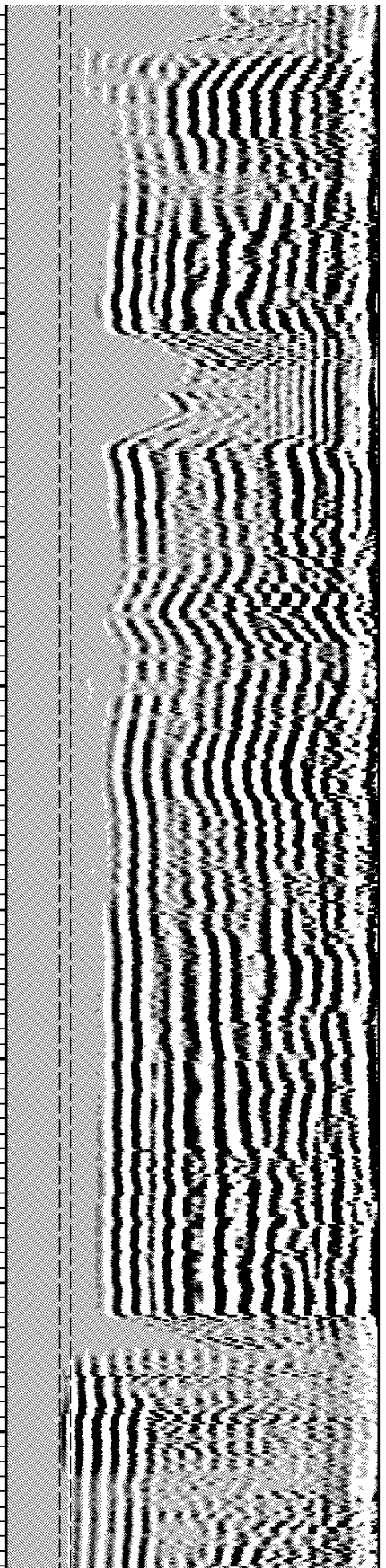
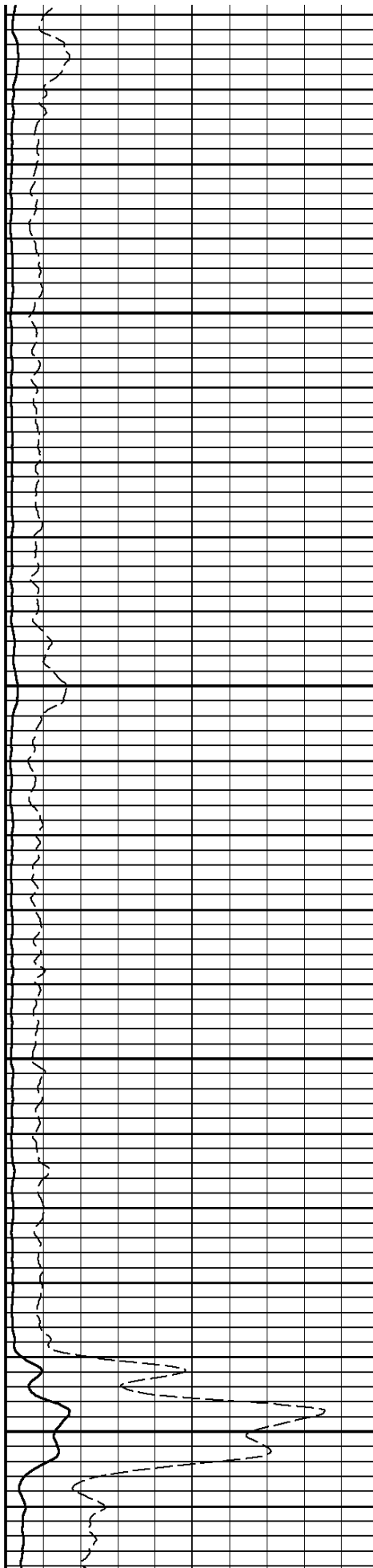
7100

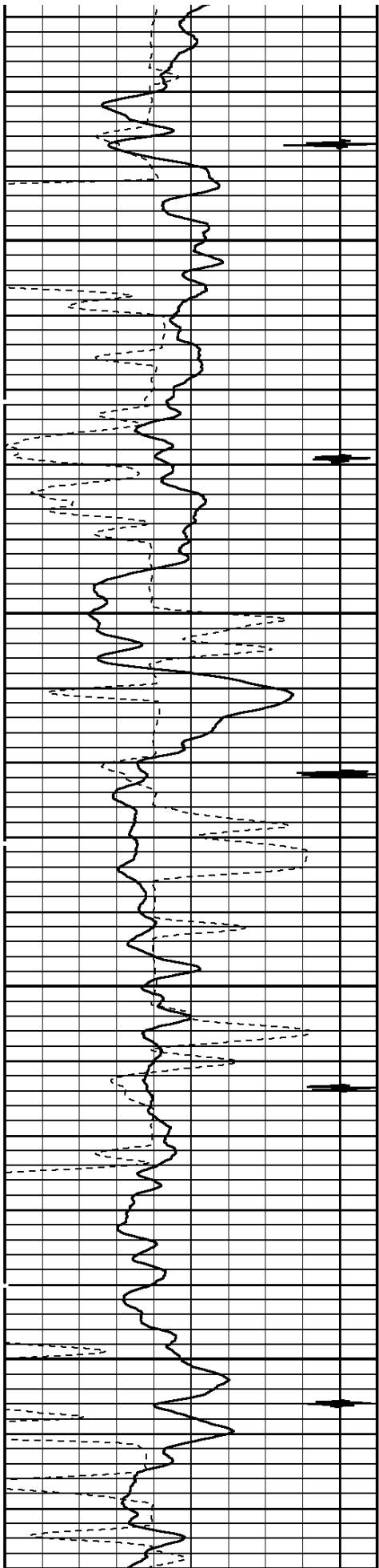




7200

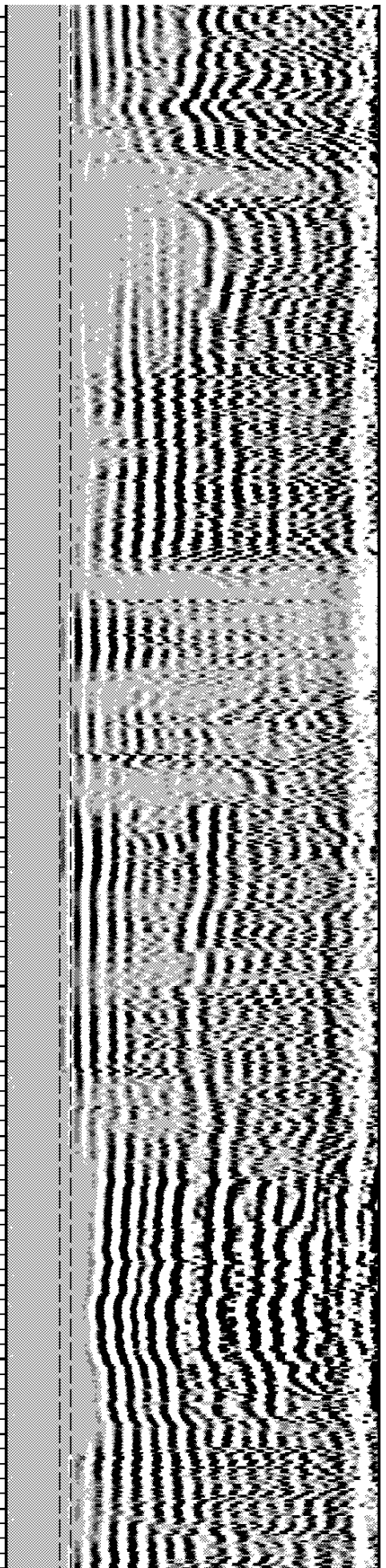
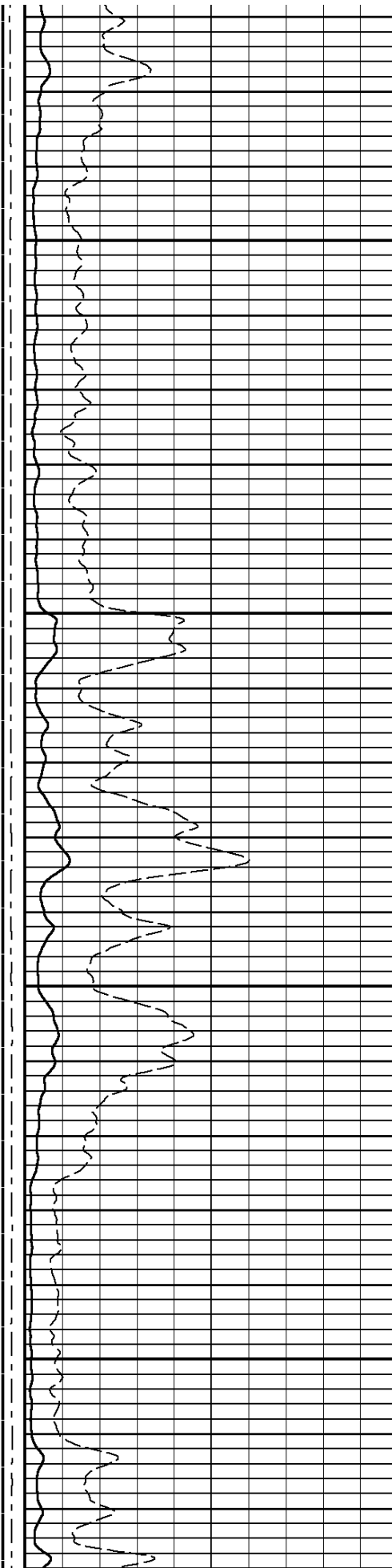
7300

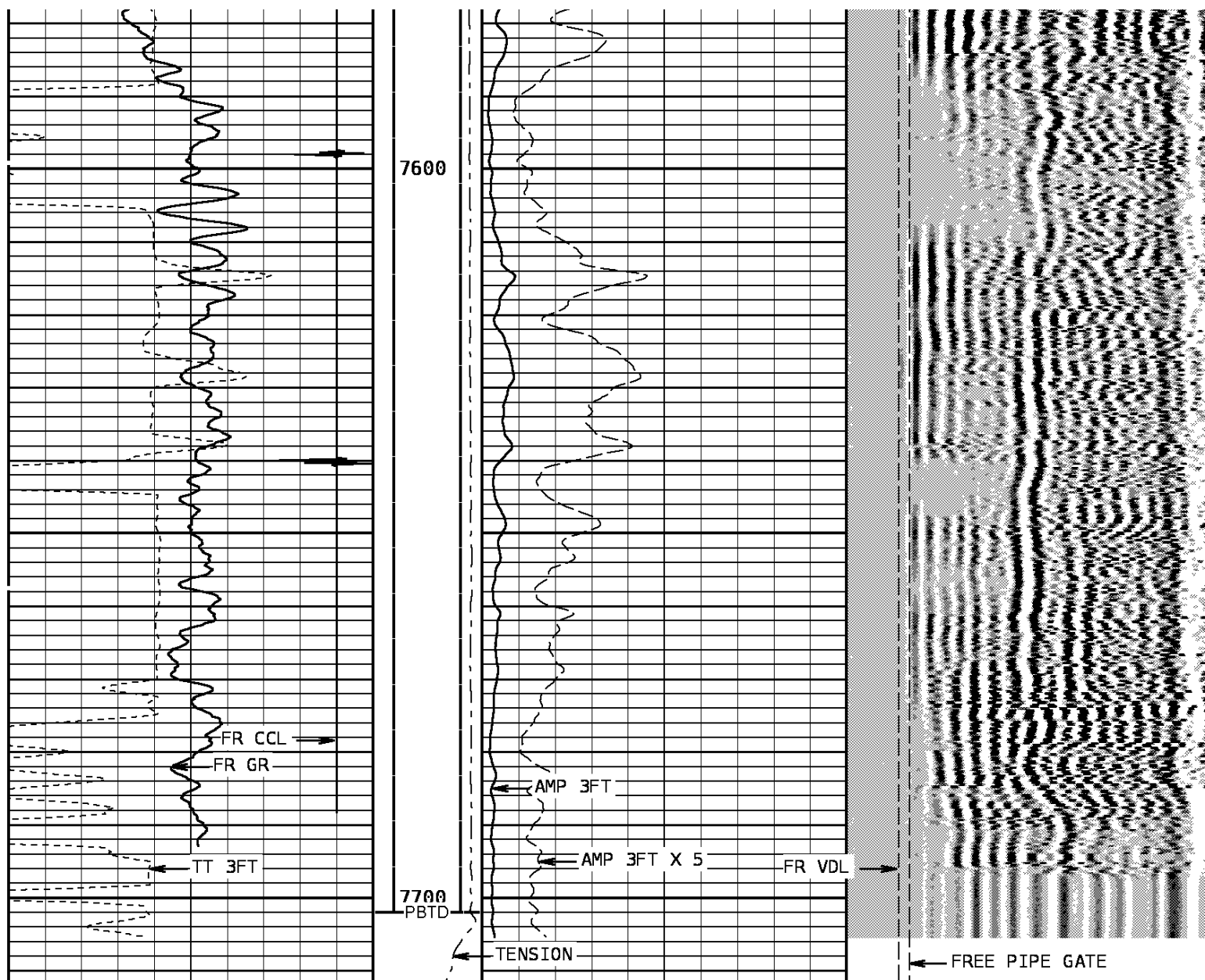




7400

7500





| TRAVEL TIME 3FT | | | Tension | | AMPLITUDE 3FT | | VARIABLE DENSITY 5FT | | | |
|-----------------|--------------|-----|---------|------|------------------|------------|----------------------|-----|--------------|------|
| ----- | | | | | ----- | | ----- | | | |
| 310 | Microseconds | 210 | 0 | 2000 | 0 | Millivolts | 100 | 200 | Microseconds | 1200 |
| Gamma Ray | | | | | AMPLITUDE 3FT X5 | | FREE PIPE GATE | | | |
| 0 | API | 150 | | | 0 | Millivolts | 20 | 200 | Microseconds | 1200 |
| Collar Locator | | | | | | | FREE PIPE GATE | | | |
| -4000 | Millivolts | 440 | | | | | 200 | | Microseconds | 1200 |

START DEPTH: 7712.0 DIRECTION: UP DATE: 01/10/2009 TIME: 16:35 MODE: ORIGINAL

156887 CBLMAIN

MAIN PASS

DEPTH SCALE: 5":100'

VERSION: 80214133R"

REMARKS

LOGGED WITH 0 PSI @ SURFACE

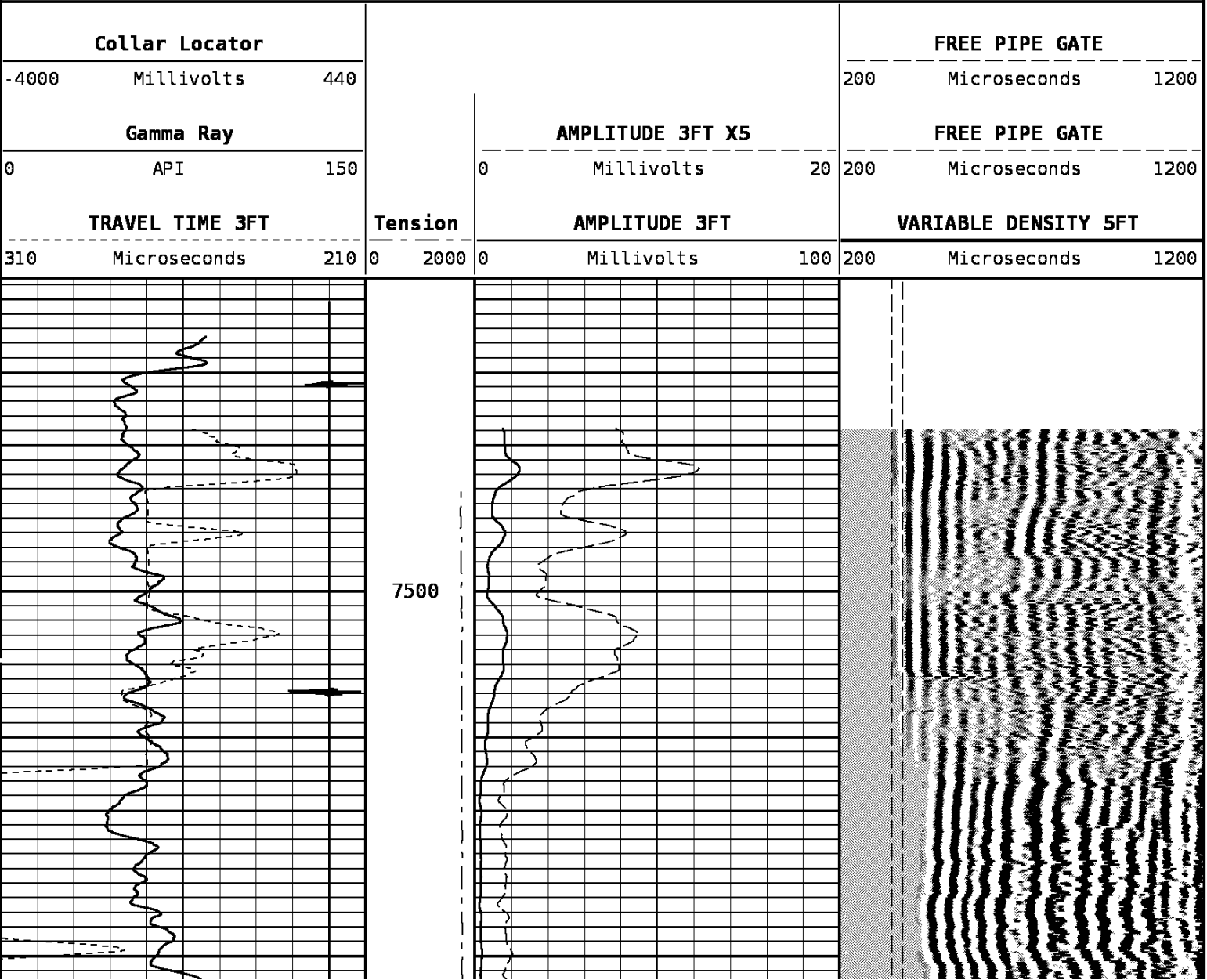
DEPTH SCALE: 5":100'

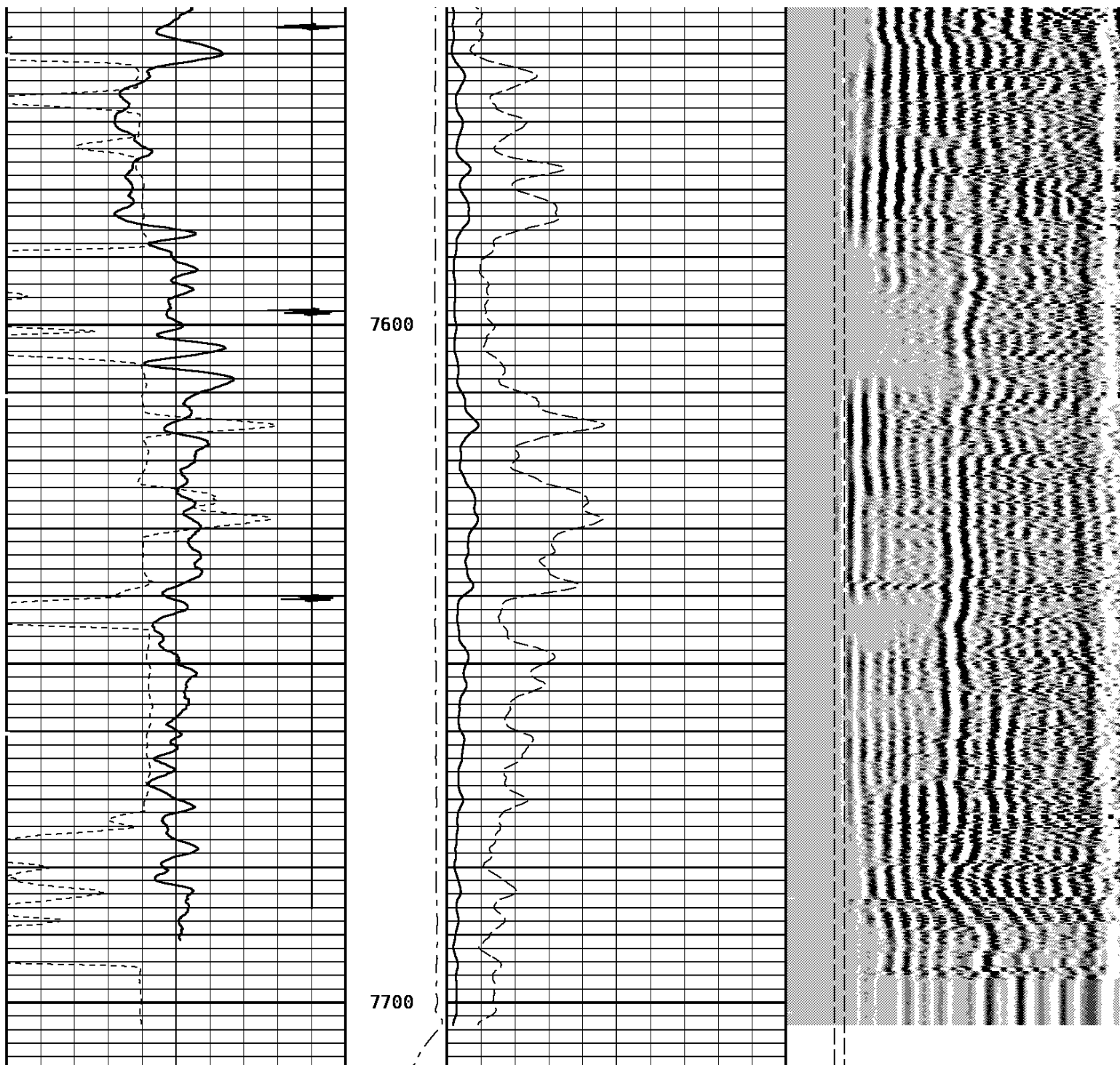
VERSION: 80214133R"

REPEAT PASS

156887 CBLREPEAT

FINISH DEPTH: 7457.2 Feet DIRECTION: UP DATE: 01/10/2009 TIME: 16:35 MODE: ORIGINAL





| TRAVEL TIME 3FT | | | Tension | | AMPLITUDE 3FT | | VARIABLE DENSITY 5FT | | | | | |
|-----------------|--------------|-----|---------|--|------------------|--------------|----------------------|--------------|------|-----|--------------|------|
| 310 | Microseconds | 210 | | | 0 | 2000 | 0 | Millivolts | 100 | 200 | Microseconds | 1200 |
| Gamma Ray | | | | | AMPLITUDE 3FT X5 | | FREE PIPE GATE | | | | | |
| 0 | API | 150 | | | 0 | 20 | 200 | Microseconds | 1200 | | | |
| Collar Locator | | | | | FREE PIPE GATE | | | | | | | |
| -4000 | Millivolts | 440 | | | 200 | Microseconds | 1200 | | | | | |

START DEPTH: 7709.7 DIRECTION: UP DATE: 01/10/2009 TIME: 16:35 MODE: ORIGINAL

156007 CR REPEAT

REPEAT PASS

DEPTH SCALE: 5":100'

VERSION: 80214133R"

1 7/16 Adapter Head

Weight 2.2 LB.
Length 12 IN.
Max. Diameter 1.44 IN.

Total Stack Weight 208.0 LBS. in air
Total Stack Length 25.34 FT.

Collar Locator

Weight 39.8 LBS.
Length 3.40 FT.
Max. Diameter 2.75 IN.

Slim Hole Gamma Ray

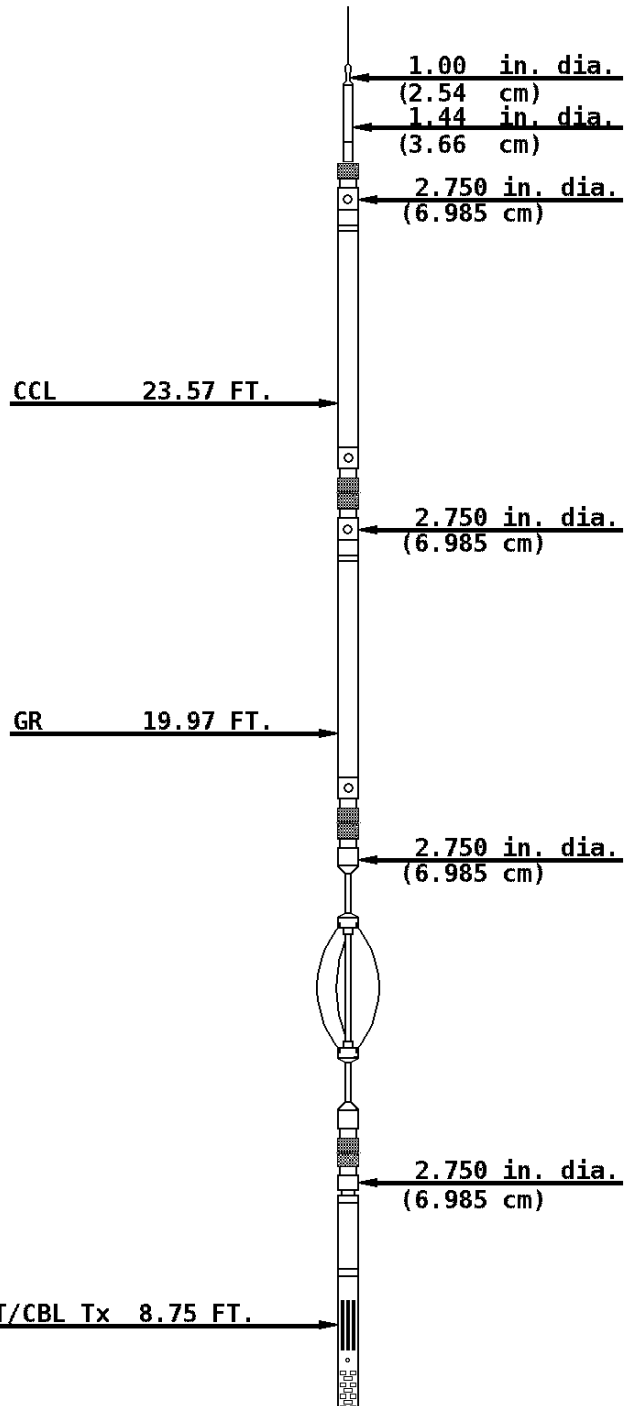
Weight 39.8 LBS.
Length 4.71 FT.
Max. Diameter 2.750 IN.

Slim Hole Centralizer

Weight 22 LBS.
Length 3.08 FT.
Max. Diameter 2.750 IN.

Sector Bond

Weight 89.2 LBS.
Length 10.32 FT.
Max. Diameter 2.750 IN.



SBT Rx 7.77 FT.

3' Rx 7.28 FT.

5' Rx 6.28 FT.

2.750 in. dia.
(6.985 cm)

Slim Hole Centralizer

Weight 15.0 LBS.
Length 2.82 FT.
Max. Diameter 2.750 IN.

Tool Zero

COMPANY BILL BARRETT CORPORATION

WELL JCJ 11B-21-692

FIELD MAMM CREEK

COUNTY GARFIELD

STATE COLORADO



Weatherford®