



**SUPERIOR**  
Black Lick, Pa.  
Mercer, Pa.  
Wooster, Oh.  
Cleveland, Ok.  
Trinidad, Co.

## CEMENT BOND LOG

Company XTO Energy Inc.  
Well Golden Eagle 30-05  
Field Purgatorie River  
County Las Animas  
State CO

Company XTO Energy Inc.  
Well Golden Eagle 30-05  
Field Purgatorie River  
County Las Animas  
State CO

Location: API # : 05 071 09205 00

SEC 30 TWP 33S RGE 67W

Permanent Datum Ground Level Elevation 7307'  
Log Measured From Ground Level  
Drilling Measured From Ground Level

Other Services  
Pressure  
Control  
Elevation  
K.B. -----  
D.F. -----  
G.L. 7307'

Date	8-23-07	Run Number	One	Depth Driller	1950'	Depth Logger	1839'	Bottom Logged Interval	1837'	Top Log Interval	Surface	Open Hole Size	7 7/8"	Type Fluid	Water	Density / Viscosity	///	Max. Recorded Temp.	///	Estimated Cement Top	Surface	Time Well Ready	ROA	Time Logger on Bottom	8:30AM	Equipment Number	T0698	Location	Trinidad	Recorded By	J. Sineros	Witnessed By	Mr. Travis Gourdon
		Borehole Record																Tubing Record															
Run Number	Bit	From	To	Size	Weight	From	To																										
Casing Record	Size	Wgt/Ft	Top	Bottom																													
Surface String	8 5/8"			498"																													
Prot. String																																	
Production String	5.5"																																
Liner																																	

<<< Fold Here >>>

All interpretations are opinions based on inferences from electrical or other measurements and we cannot and do not guarantee the accuracy or correctness of any interpretation, and we shall not, except in the case of gross or willful negligence on our part, be liable or responsible for any loss, costs, damages, or expenses incurred or sustained by anyone resulting from any interpretation made by any of our officers, agents or employees. These interpretations are also subject to our general terms and conditions set out in our current Price Schedule.

### Comments

Second Bosque entrance 4 miles past Weston, turn right on Apache Canyon,  
4th drive thru location

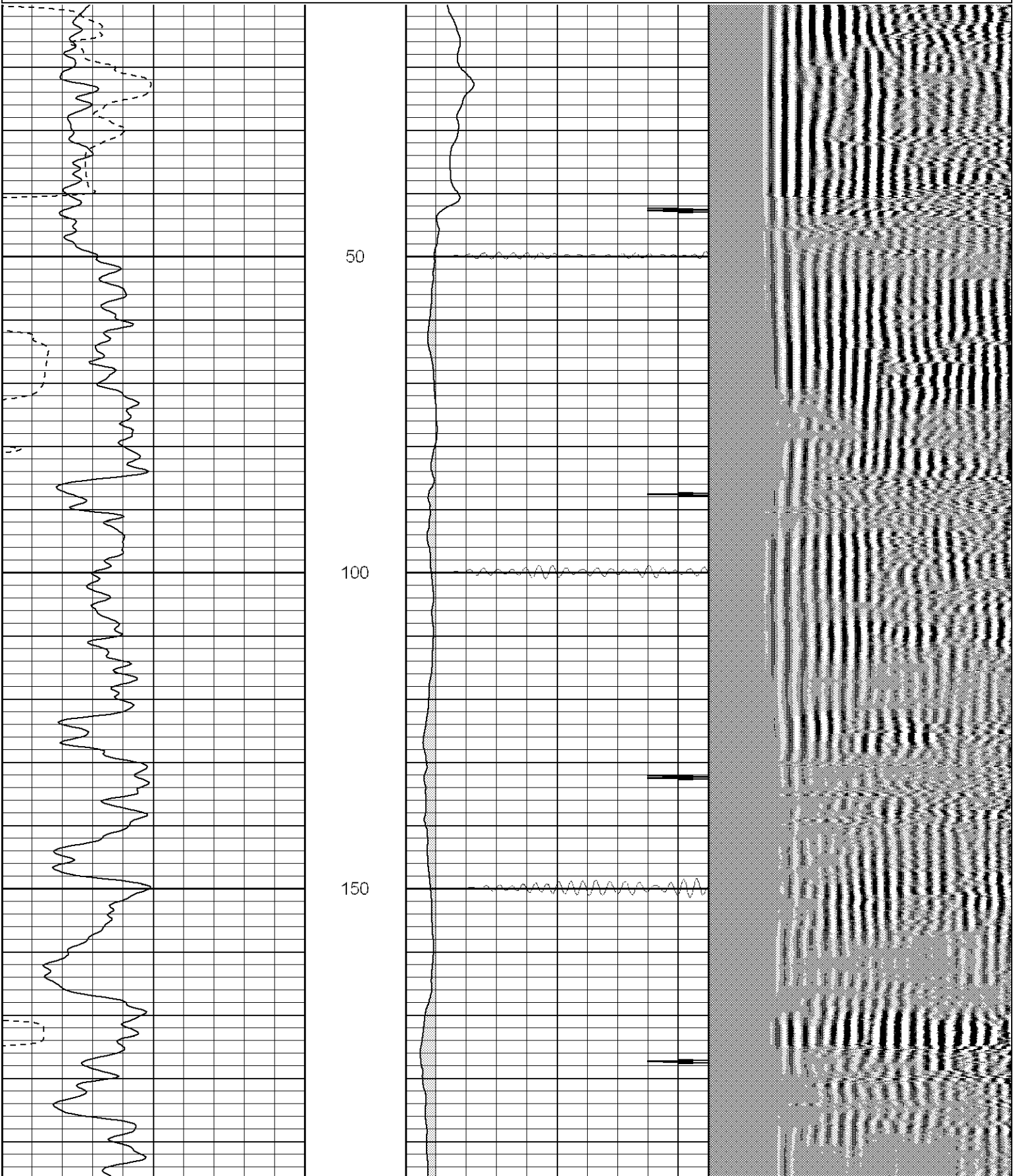


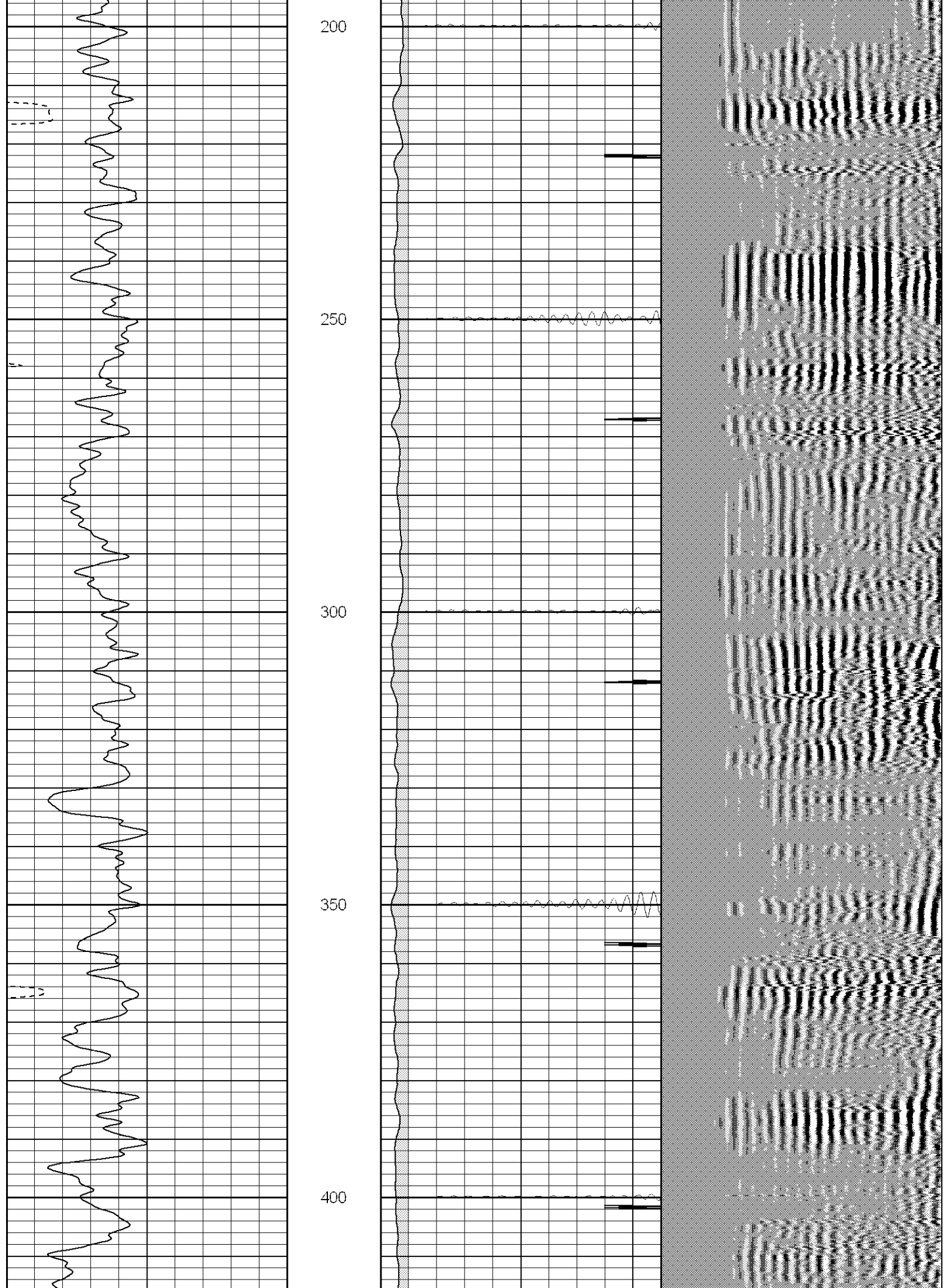
**SUPERIOR**

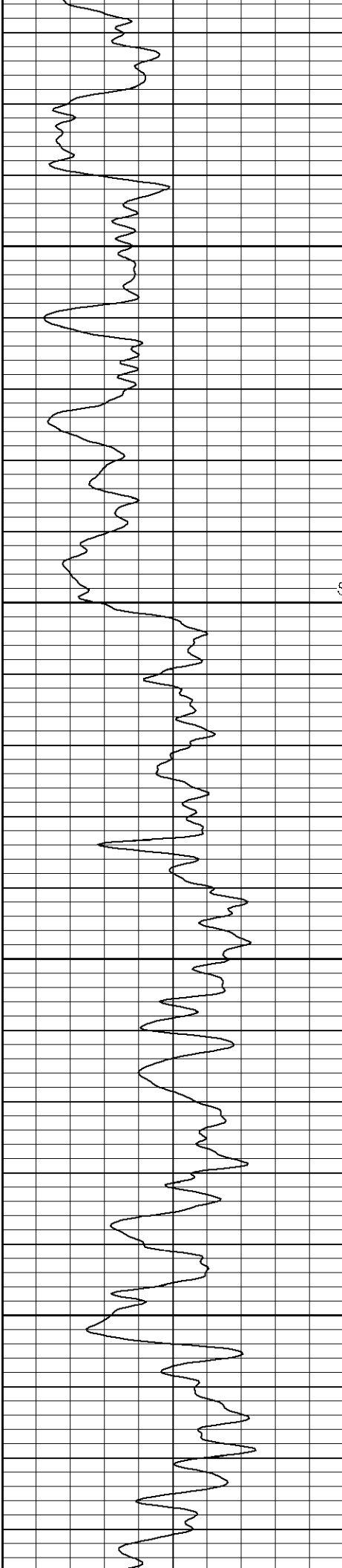
Black Lick, Pa.  
Mercer, Pa.  
Wooster, Oh.  
Cleveland, Ok.  
Trinidad, Co.

# Main Pass (1000PSI)

0	GR (GAPI)	200	0	AMP3 (mV)	100	200	Variable Density	1200
400	TT3 (usec)	200	18	CCL	-2			
			200	CBL5	1200			





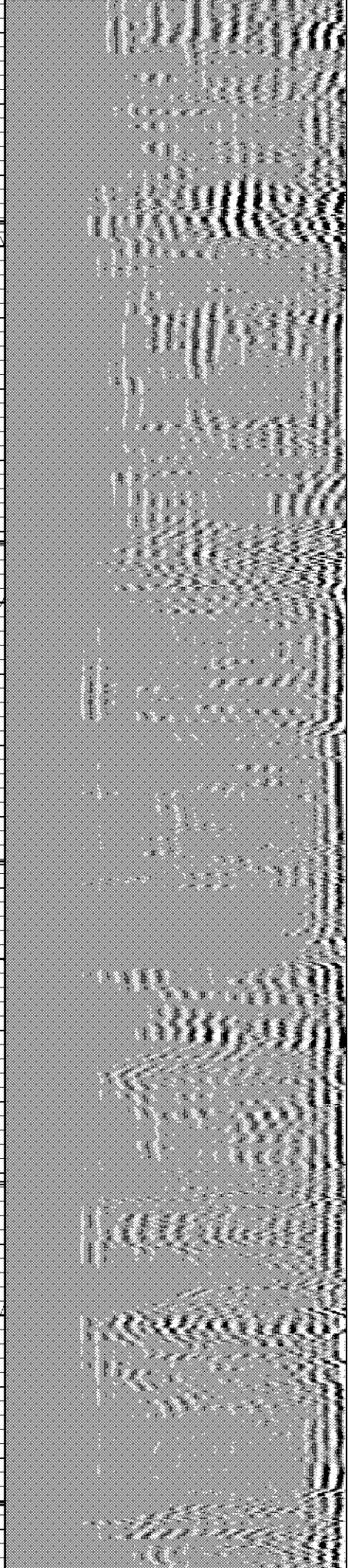
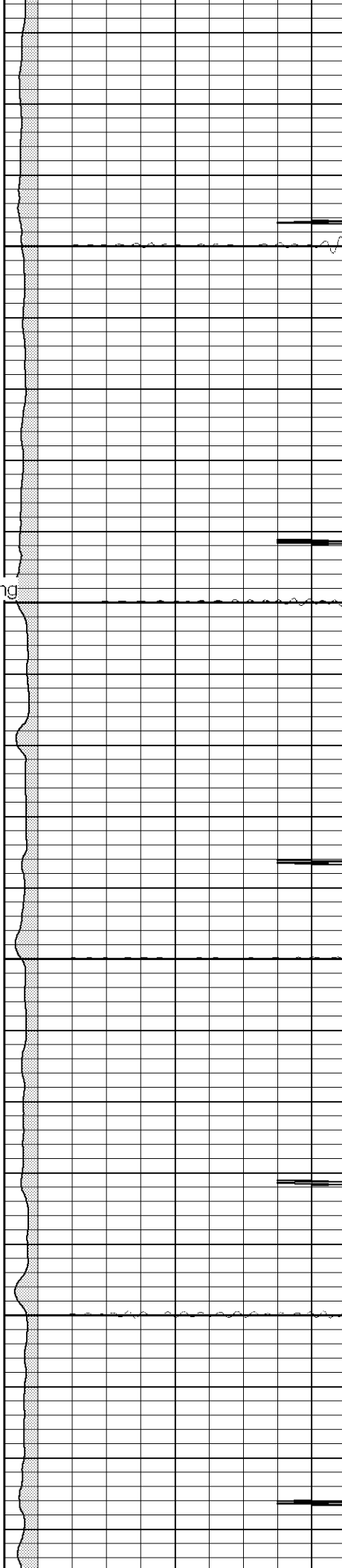


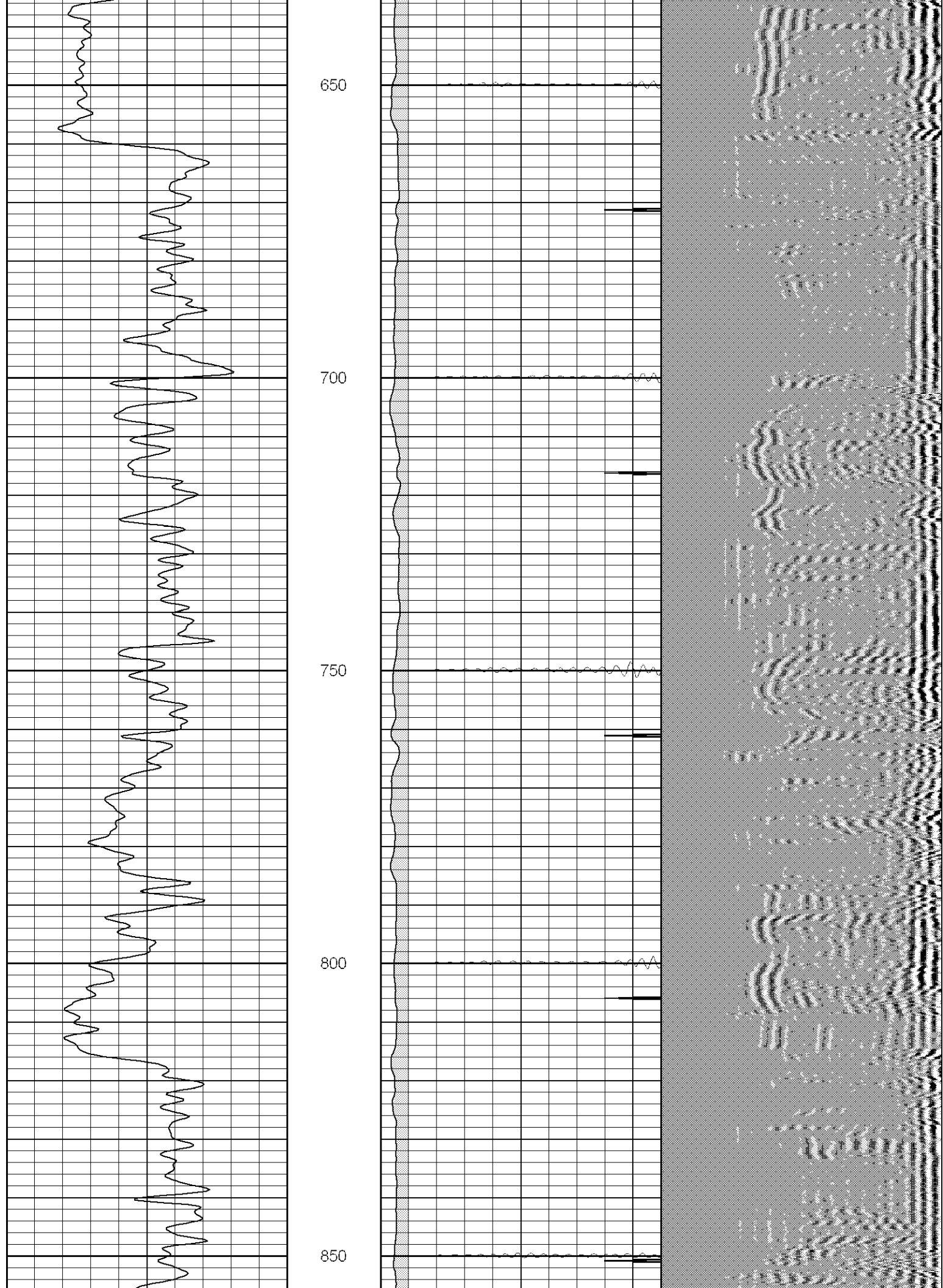
450

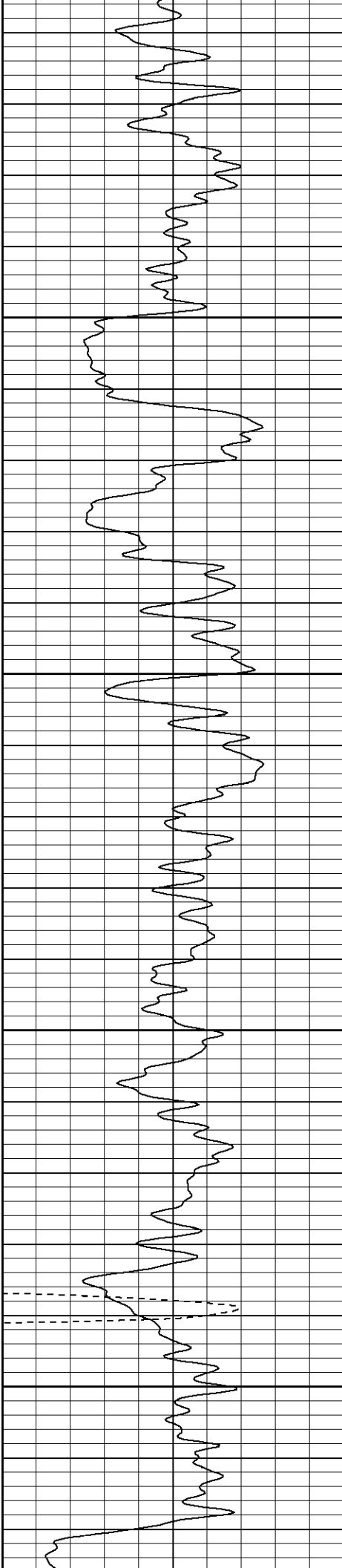
Surface Casing  
500

550

600





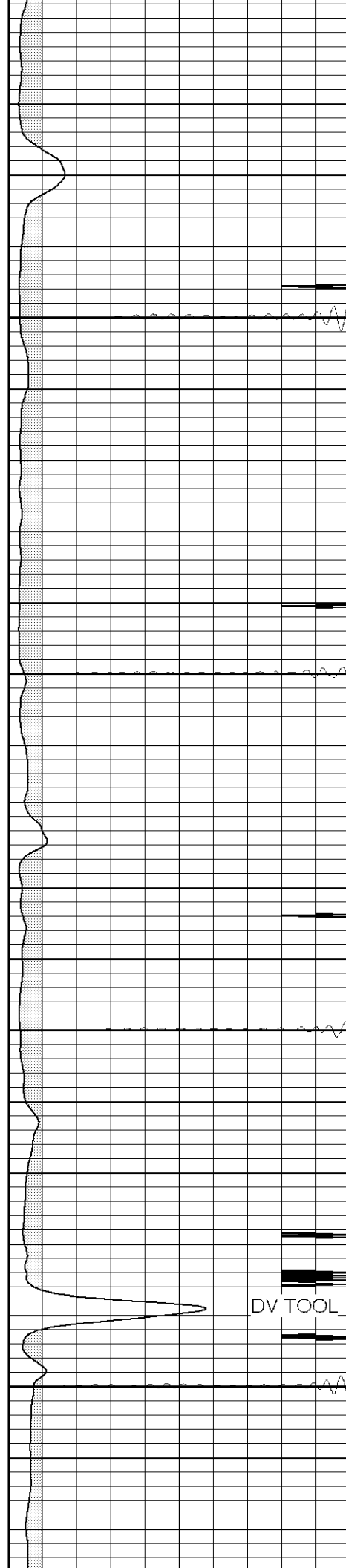


900

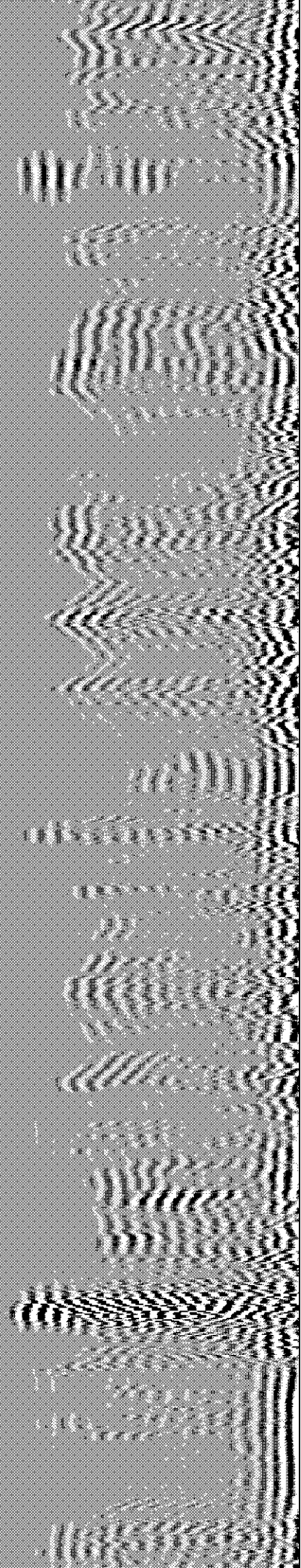
950

1000

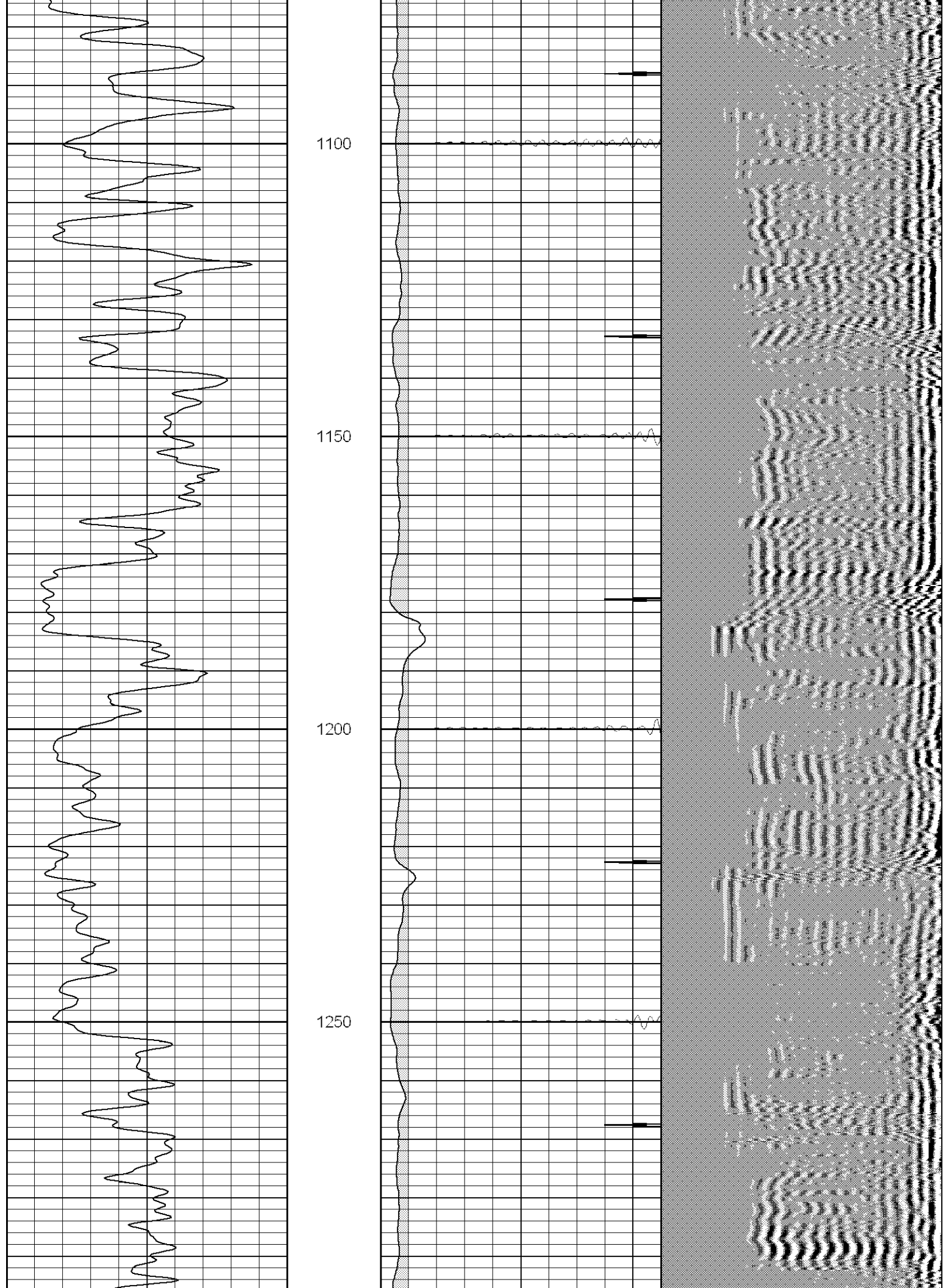
1050

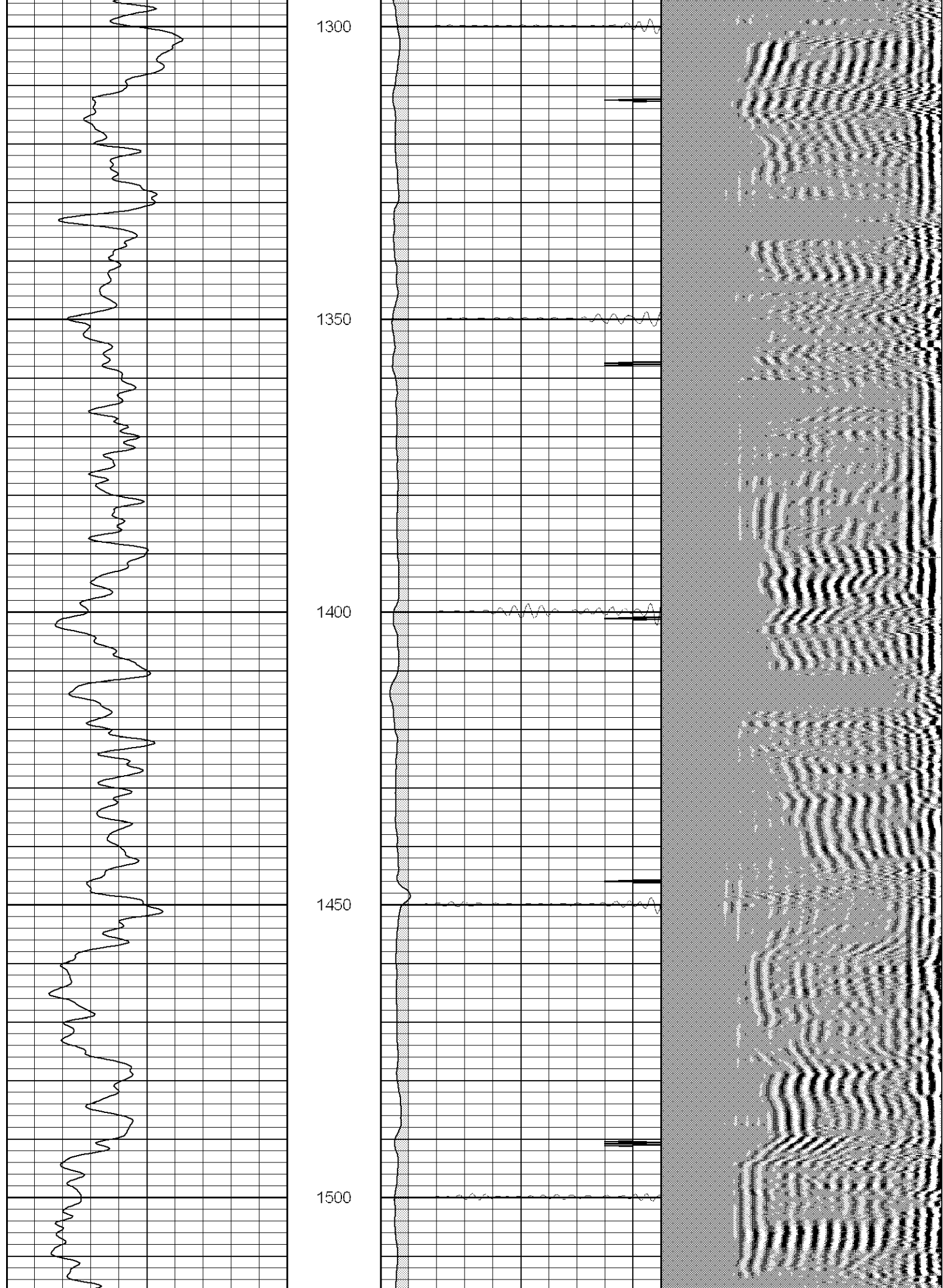


DV TOOL

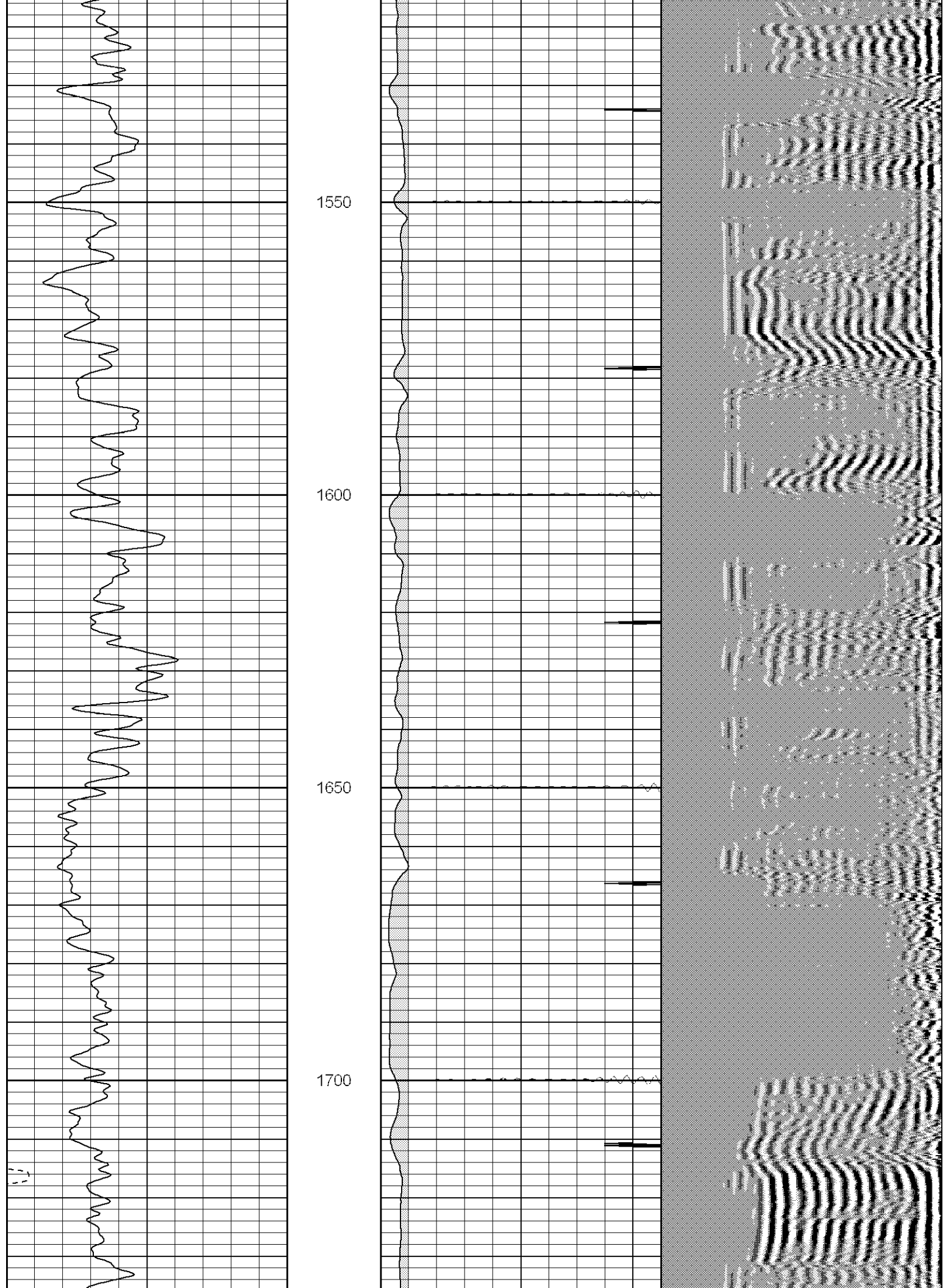


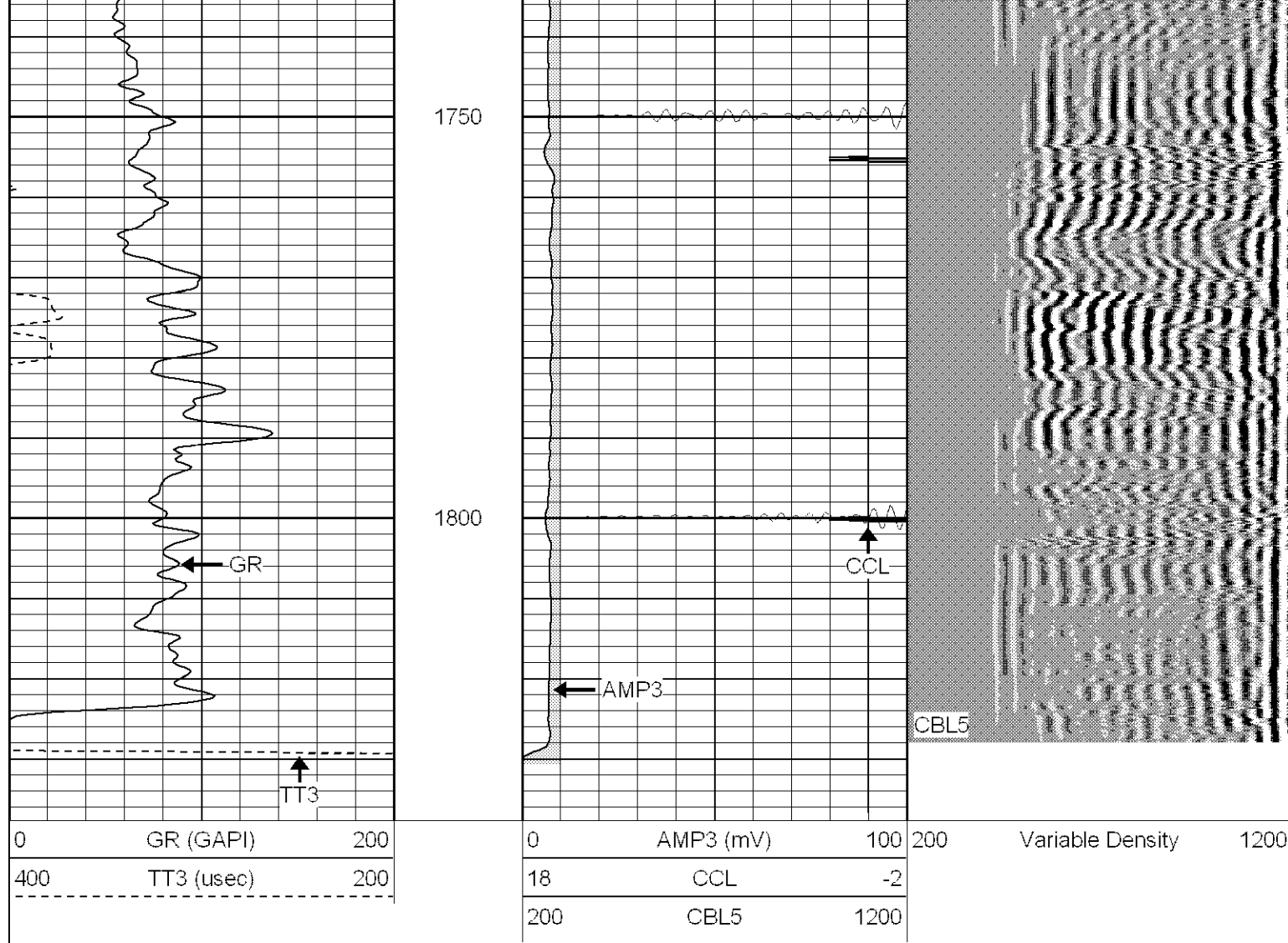












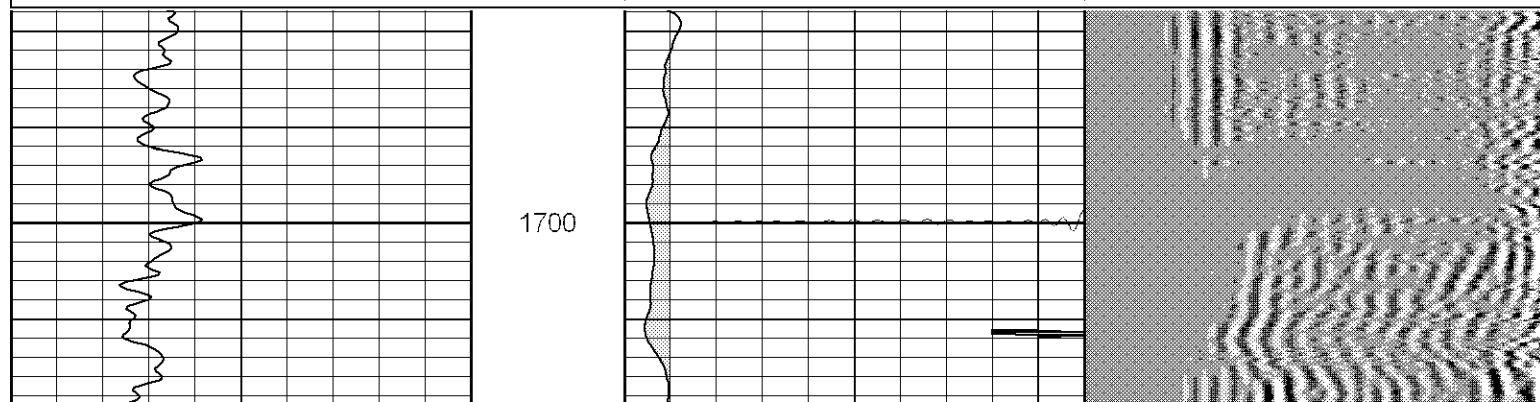
**SUPERIOR**

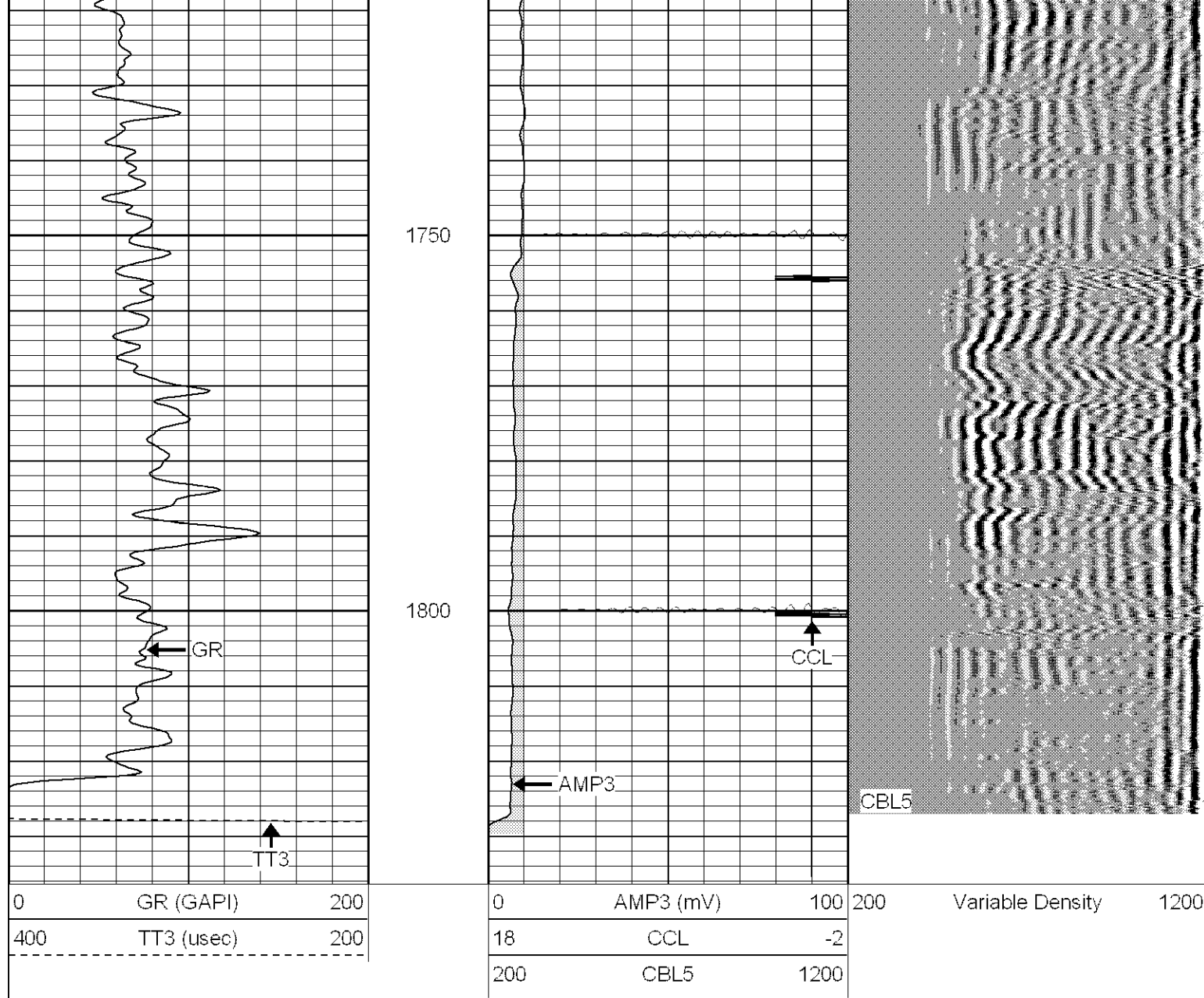
Black Lick, Pa.  
Mercer, Pa.  
Wooster, Oh.  
Cleveland, Ok.  
Trinidad, Co.

# Repeat Section (0PSI)

Database File: ge300582307b.db  
Dataset Pathname: pass1  
Presentation Format: cblrt  
Dataset Creation: Thu Aug 23 08:11:13 2007 by Log Open-Cased 061129  
Charted by: Depth in Feet scaled 1:240

0	GR (GAPI)	200	0	AMP3 (mV)	100	200	Variable Density	1200
400	TT3 (usec)	200	18	CCL	-2			
			200	CBL5	1200			





### Calibration Report

Database File: ge300582307b.db  
 Dataset Pathname: pass1  
 Dataset Creation: Thu Aug 23 08:11:13 2007 by Log Open-Cased 061129

### Cement Bond Log Calibration Report

Serial Number:	Titan6		
Tool Model:	T6		
Performed:	Mon Aug 20 12:05:08 2007		
Depth:	206.576	ft	
Casing Diameter:	5.5	in	
	3' Spacing	5' Spacing	
Signal Zero:	0	0	mV
Calibrated Amplitude:	85	71.921	mV
Reading at Signal Zero:	0.0194092	0	V
Reading in Free Pipe:	0.7	0.65813	V
Gain:	124.891	109.281	
Offset:	0	0	

