



**SUPERIOR**  
Black Lick, Pa.  
Mercer, Pa.  
Wooster, Oh.  
Cleveland, Ok.  
Trinidad, Co.

## DUAL INDUCTION LOG

Company XTO Energy Inc.  
Well Golden Eagle 30-05  
Field Purgatoire River  
County Las Animas State Colorado

Location: API # : 05 071 09205 00

1614' FNL & 876' FWL

SEC 30 TWP 33S RGE 67W

Permanent Datum Ground Level Elevation 7307'  
Log Measured From Ground Level  
Drilling Measured From Ground Level

Other Services  
CDL  
NEUTRON  
Elevation  
K.B. -----  
D.F. -----  
G.L. 7307'

Date 7-29-07

Run Number One

Depth Driller 1950'

Depth Logger 1938'

Bottom Logged Interval 1936'

Top Log Interval Surface Casing

Casing Driller 8 5/8" @ 495'

Casing Logger 498'

Bit Size 7 7/8"

Type Fluid in Hole Water

Density / Viscosity ///

pH / Fluid Loss ///

Source of Sample ///

Rm @ Meas. Temp ///

Rmf @ Meas. Temp ///

Rmc @ Meas. Temp ///

Source of Rmf / Rmc ///

Rm @ BHT ///

Time Circulation Stopped 10:15 A.M.

Time Logger on Bottom 1:15 P.M.

Maximum Recorded Temperature 97 DEG F

Equipment Number T697

Location Trinidad

Recorded By M. Norton

Witnessed By Mr. Don Johnson

<<< Fold Here >>>

All interpretations are opinions based on inferences from electrical or other measurements and we cannot and do not guarantee the accuracy or correctness of any interpretation, and we shall not, except in the case of gross or willful negligence on our part, be liable or responsible for any loss, costs, damages, or expenses incurred or sustained by anyone resulting from any interpretation made by any of our officers, agents or employees. These interpretations are also subject to our general terms and conditions set out in our current Price Schedule.

### Comments

#### Well Directions:

Second Bosque entrance four miles after Weston,  
right on Apache Canyon, fourth drive thru location.



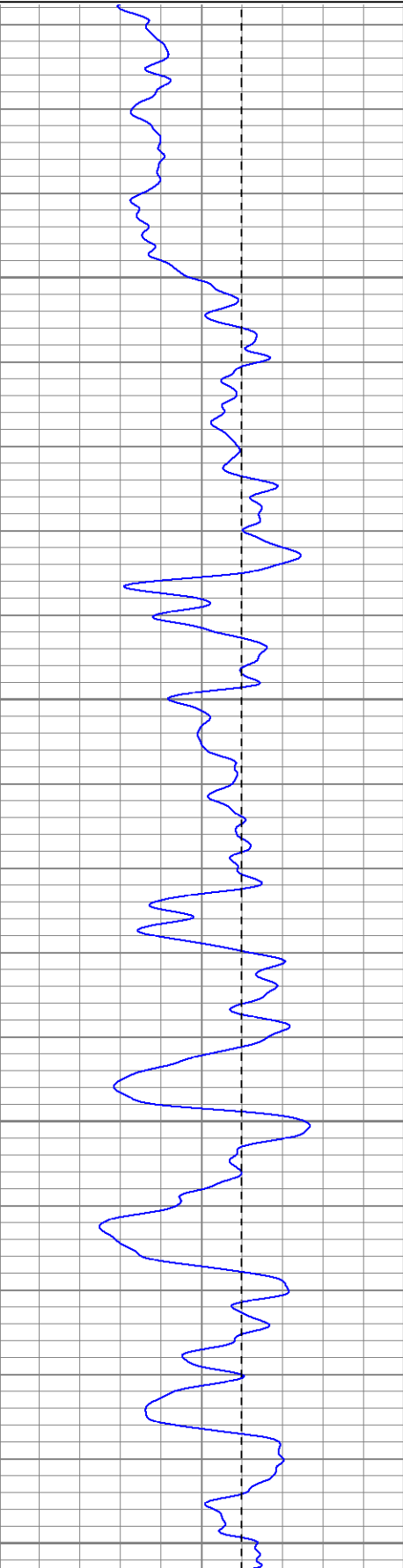
**SUPERIOR**  
Black Lick, Pa.  
Mercer, Pa.  
Wooster, Oh.  
Cleveland, Ok.  
Trinidad, Co.

# Main Pass

Database File: xtoge3005.db  
Dataset Pathname: pass2.1  
Presentation Format: dil  
Dataset Creation: Sun Jul 29 14:22:56 2007 by Calc Open-Cased 061129  
Charted by: Depth in Feet scaled 1:240

0	GR (GAPI)	200
-100	SP (mV)	100

0.2	RILM (Ohm-m)	2000
0.2	RILD (Ohm-m)	2000
0.2	RLL3 (Ohm-m)	2000

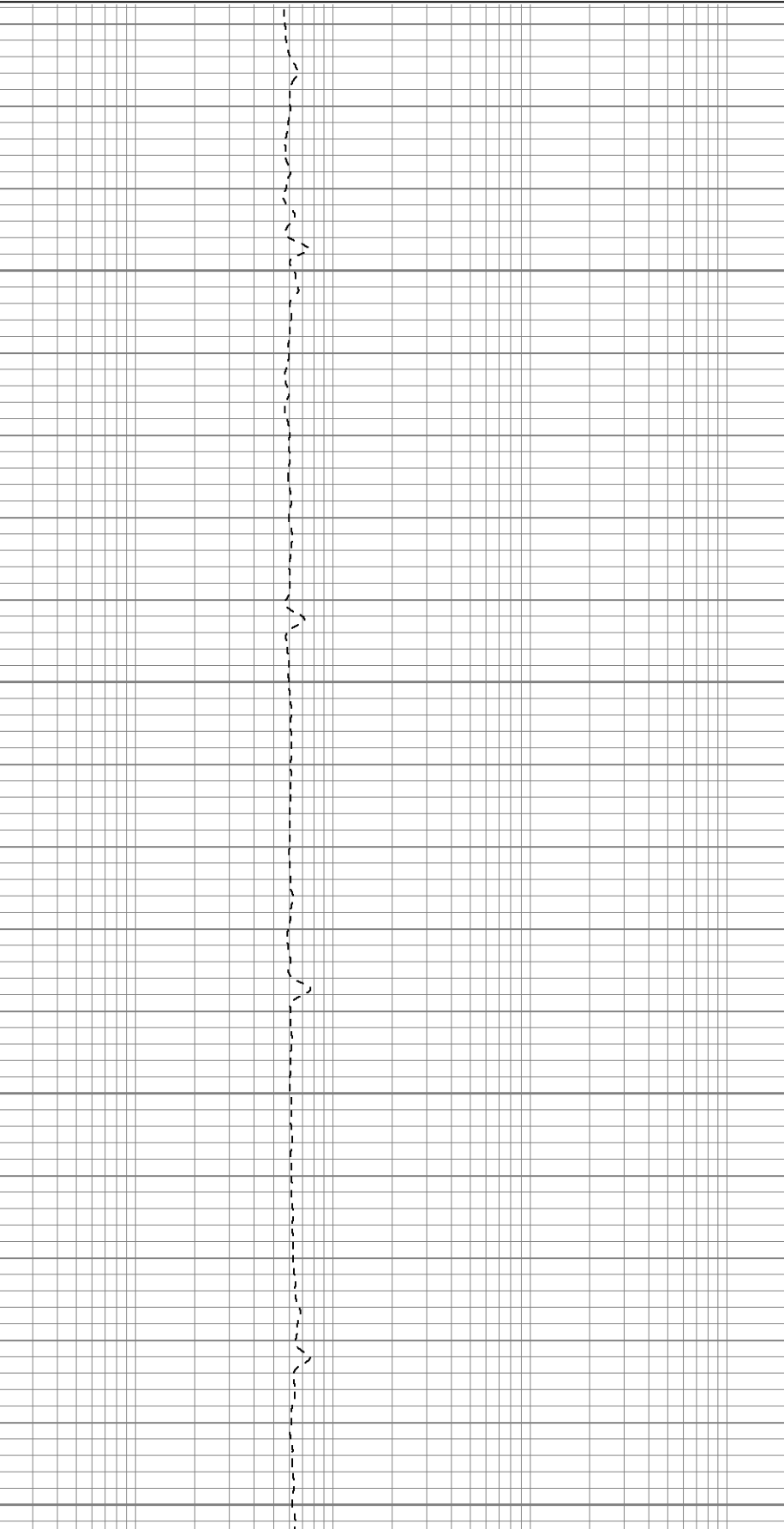


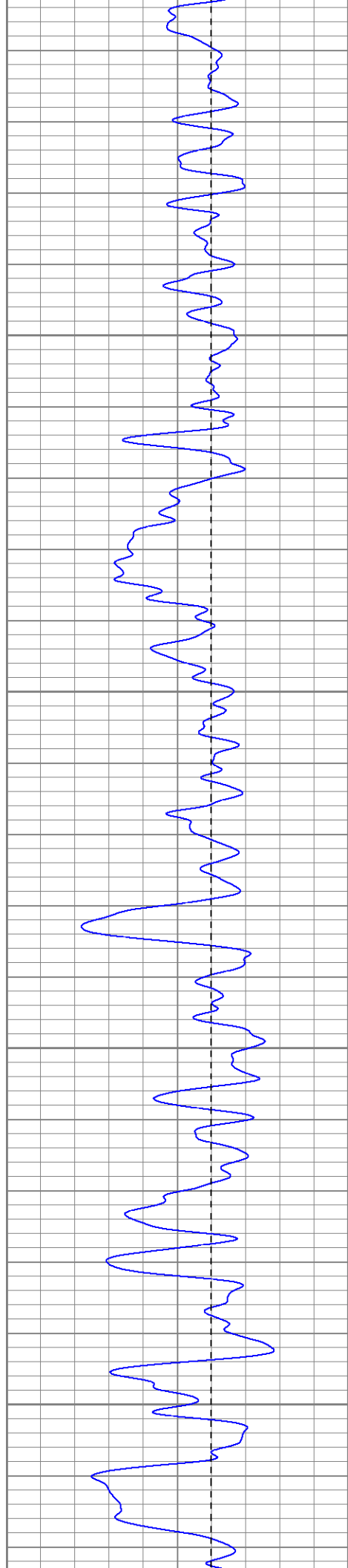
50

100

150

200



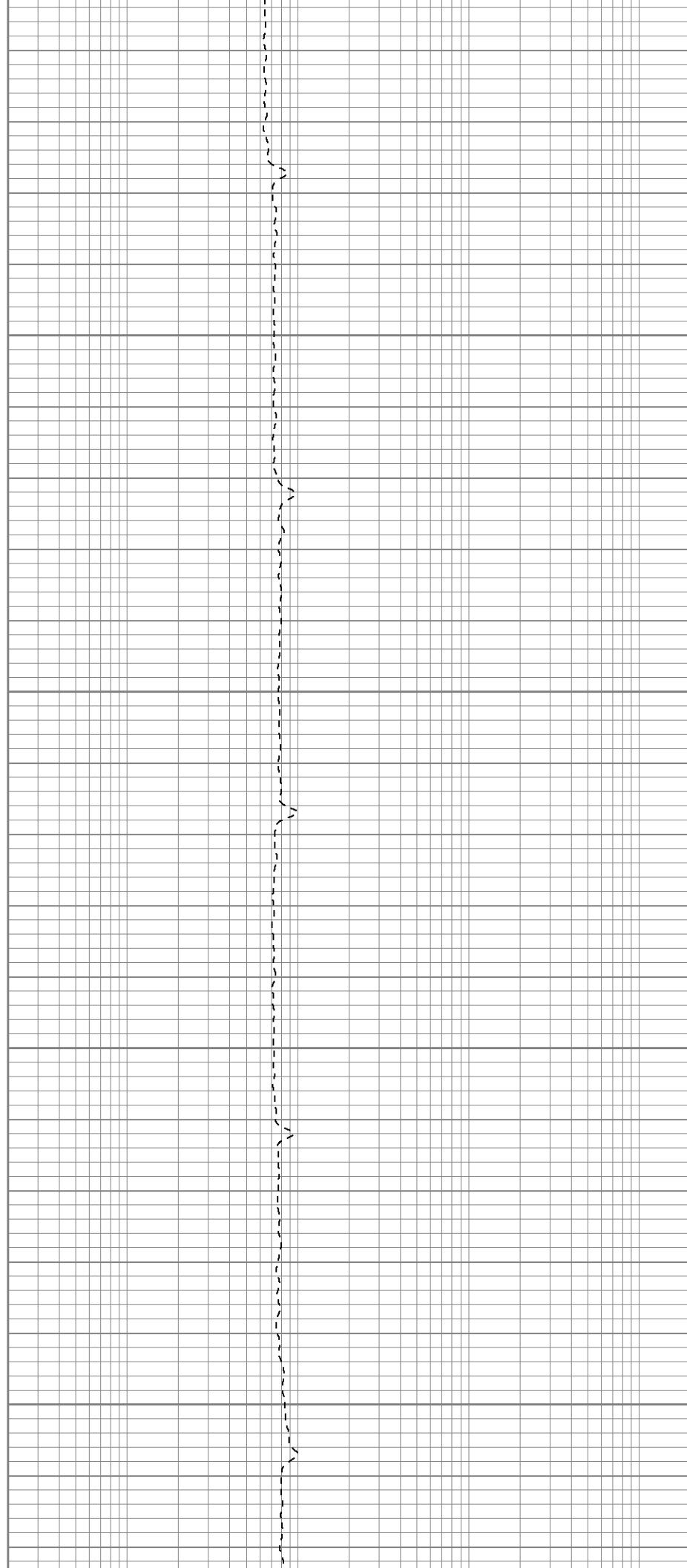


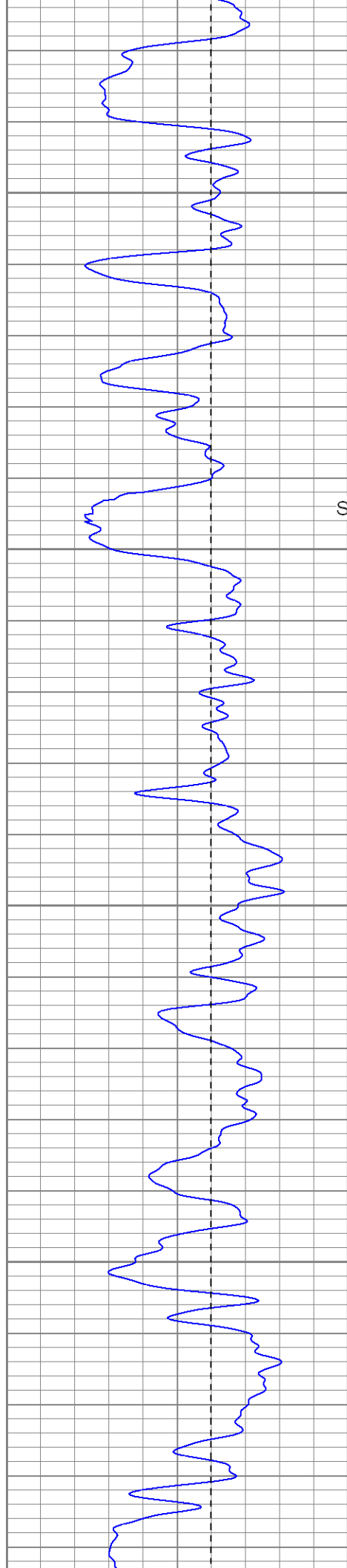
250

300

350

400





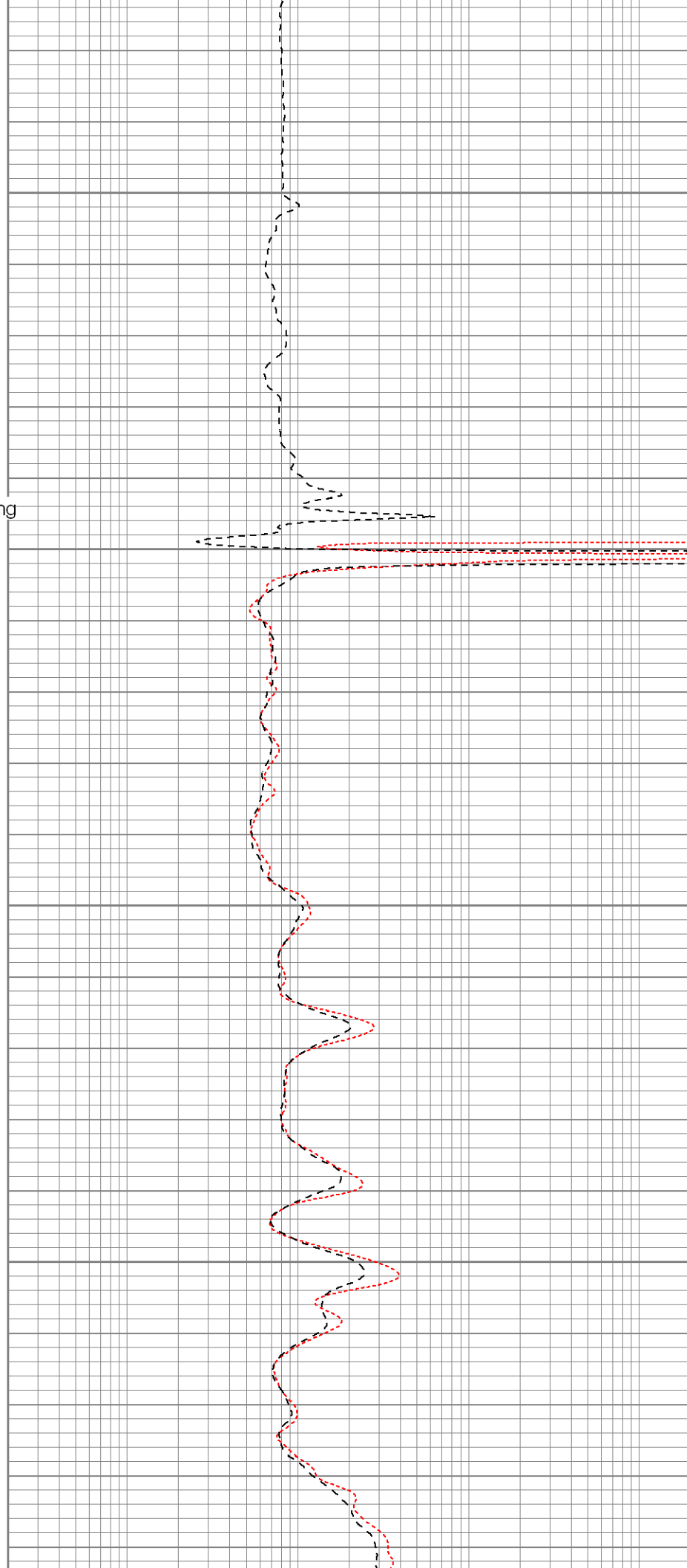
450

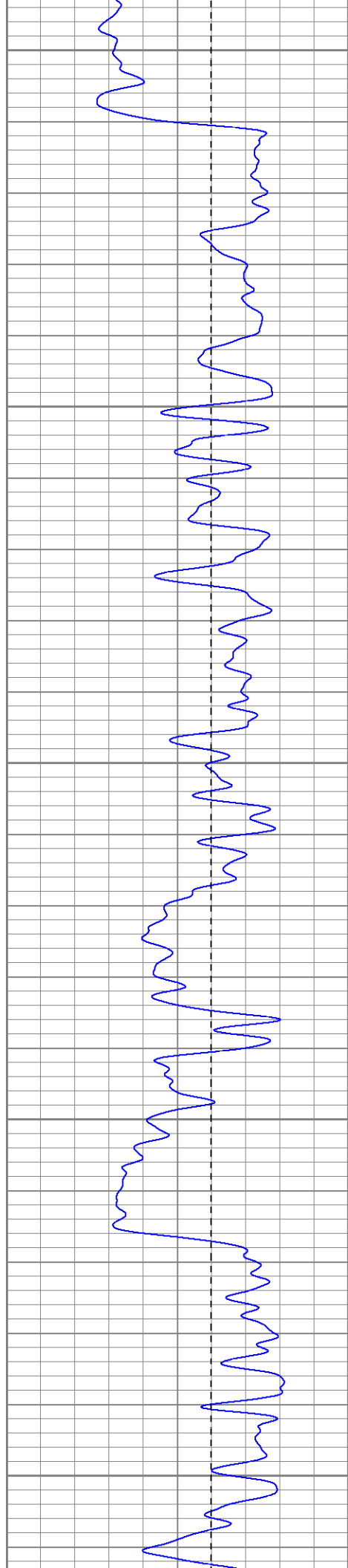
Surface Casing

500

550

600





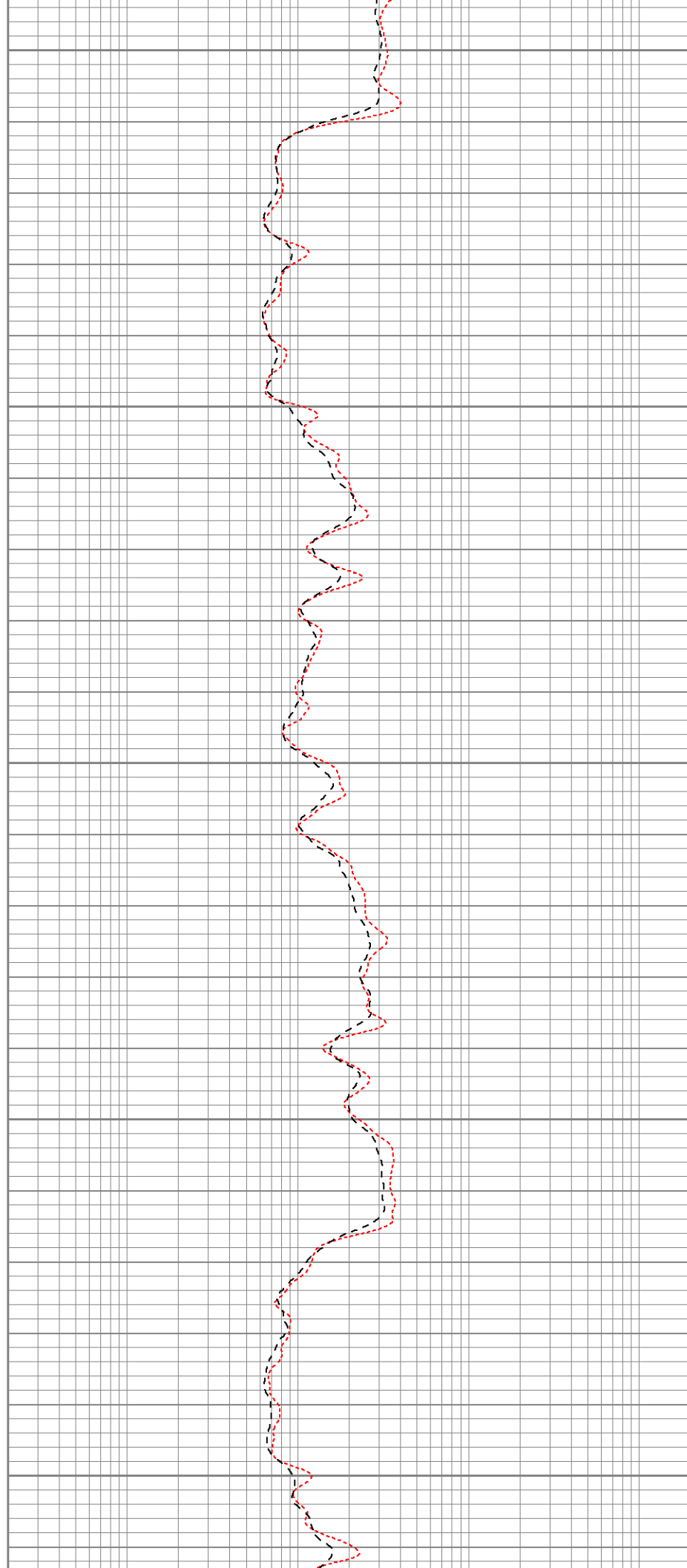
650

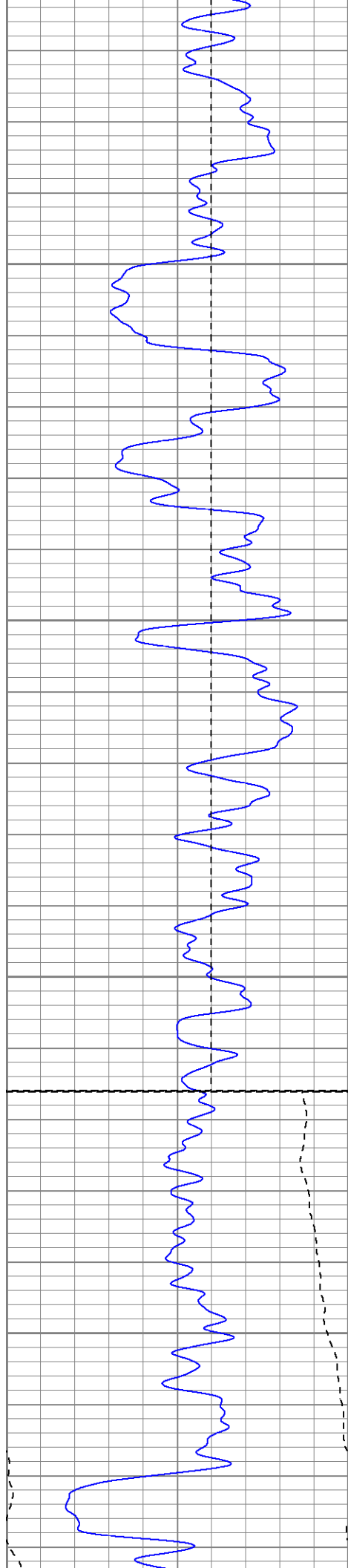
700

750

800

850





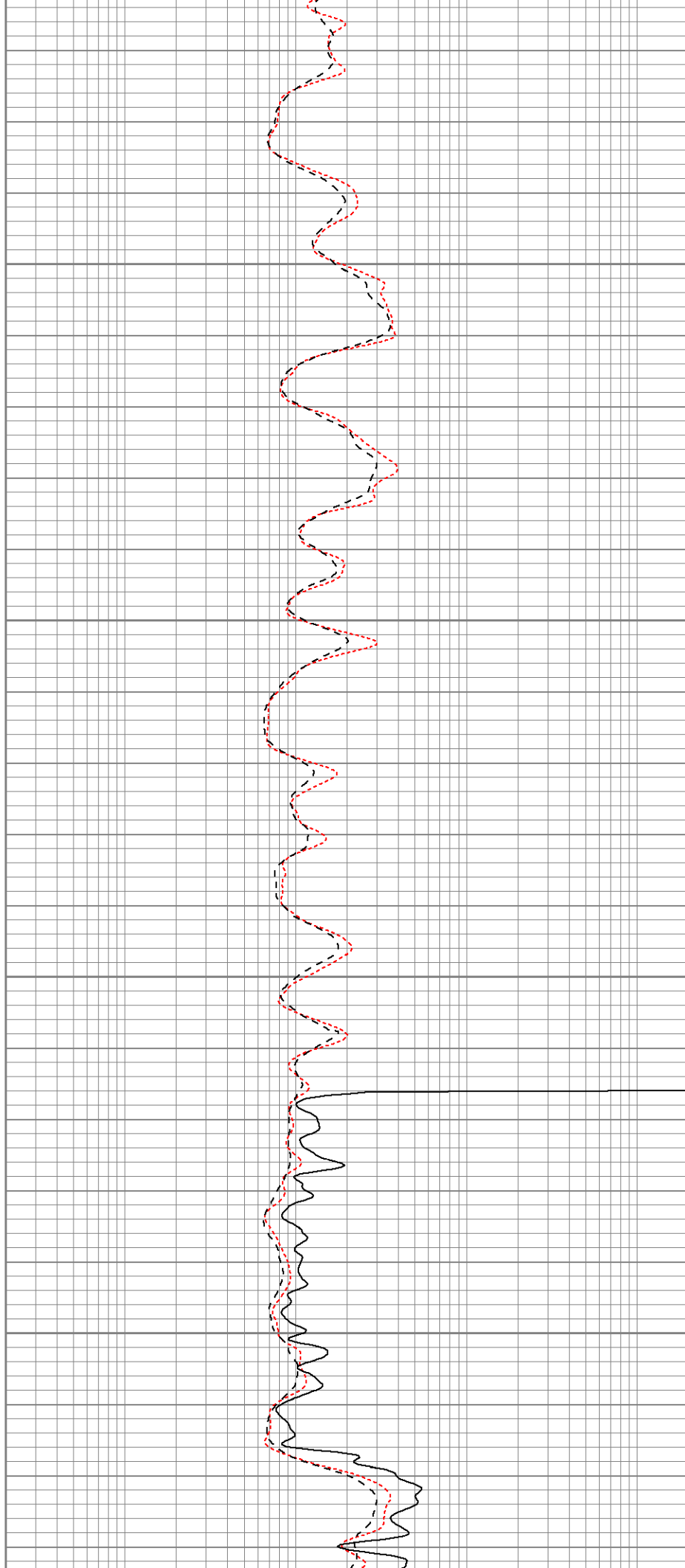
900

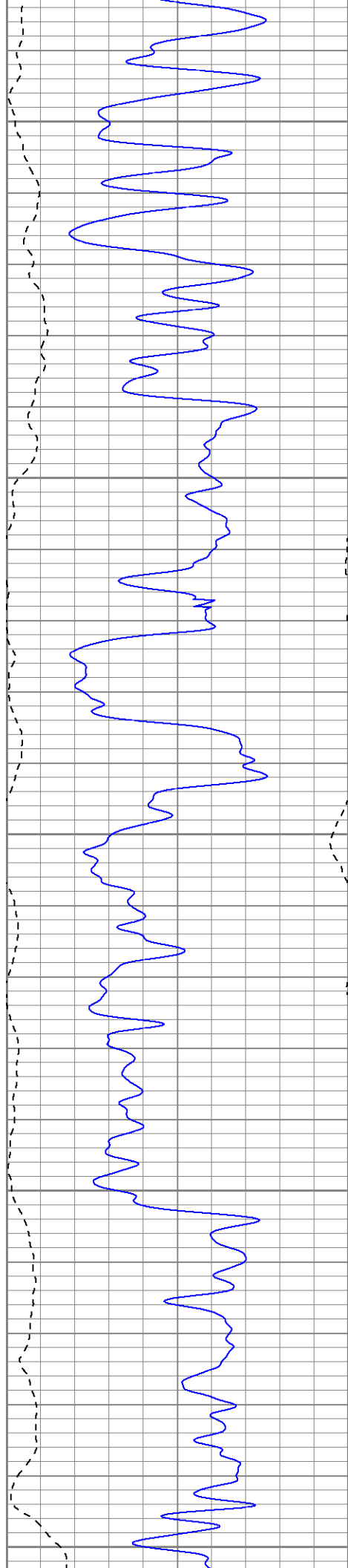
950

1000

Fluid Level

1050





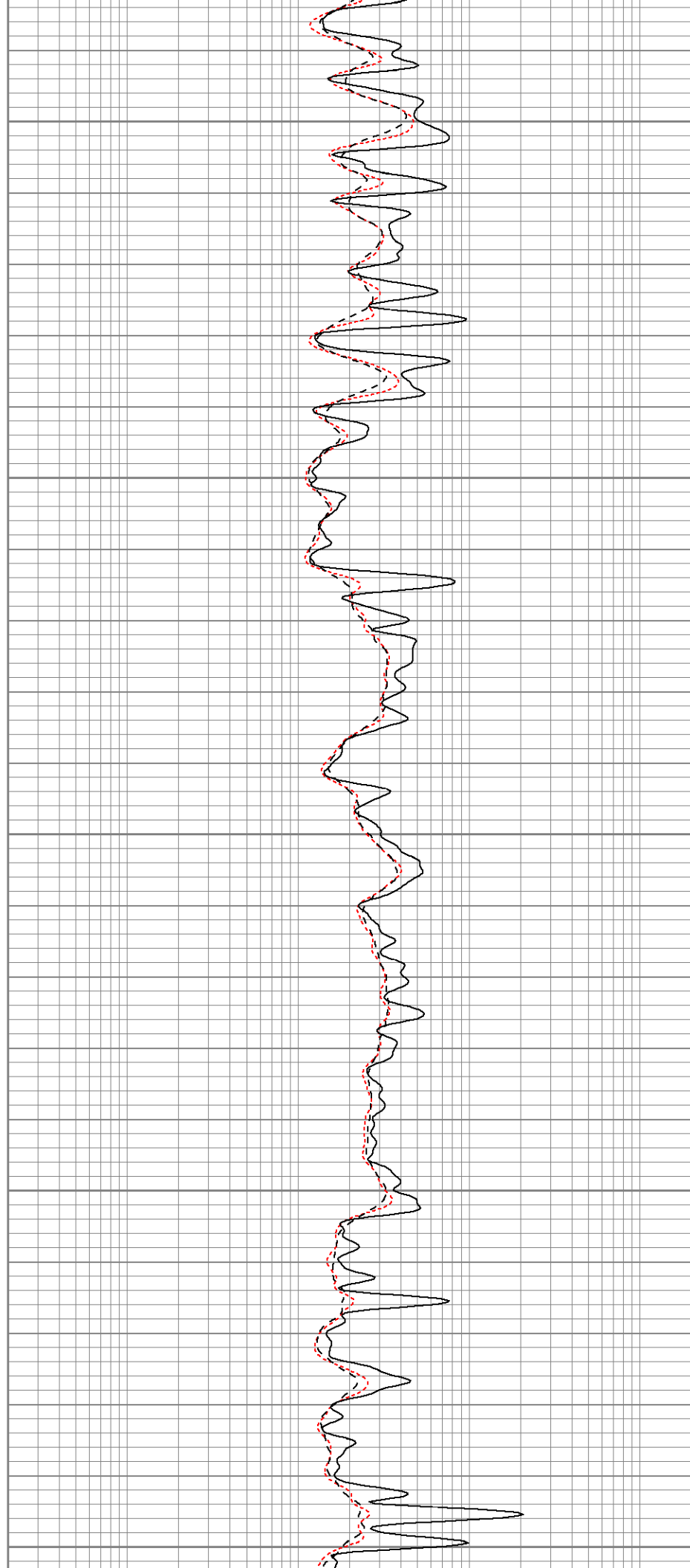
1100

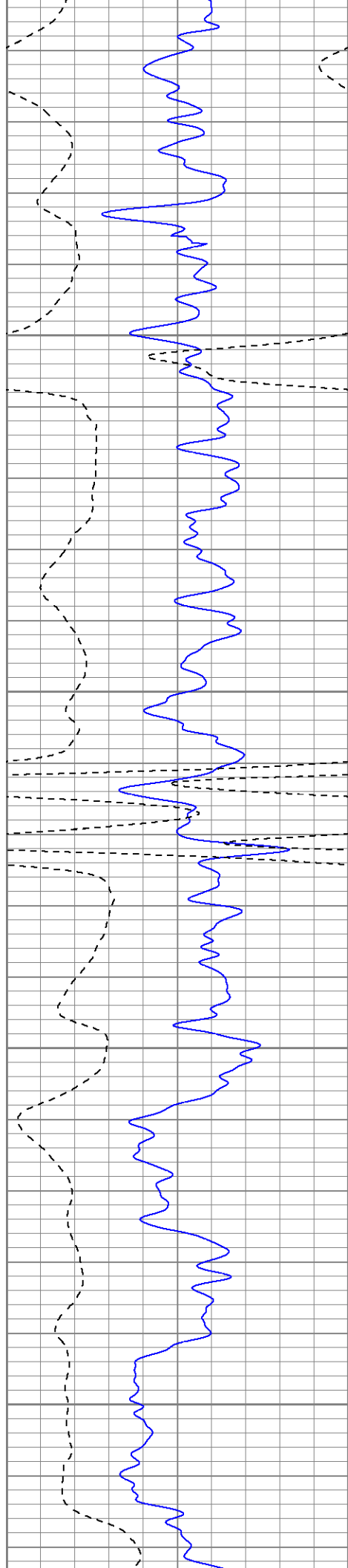
1150

1200

1250

1300



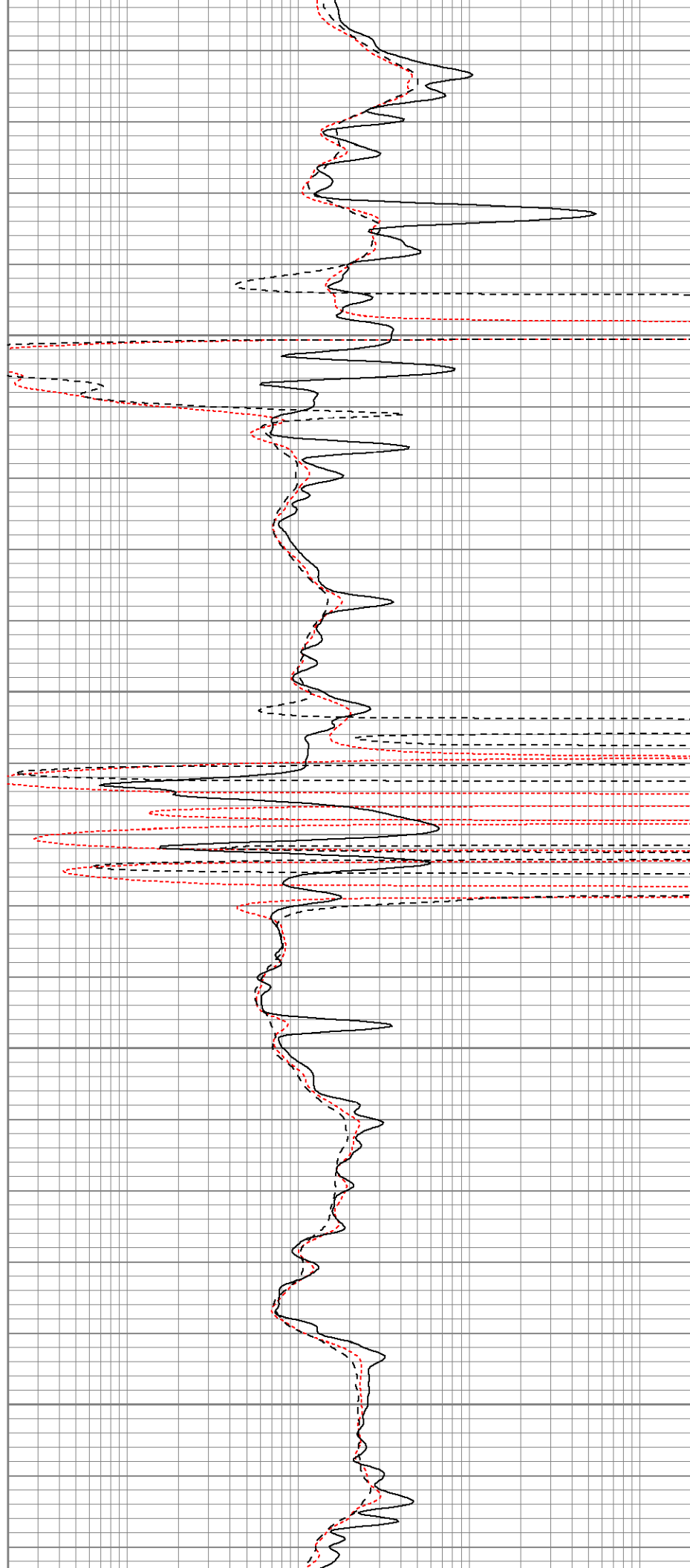


1350

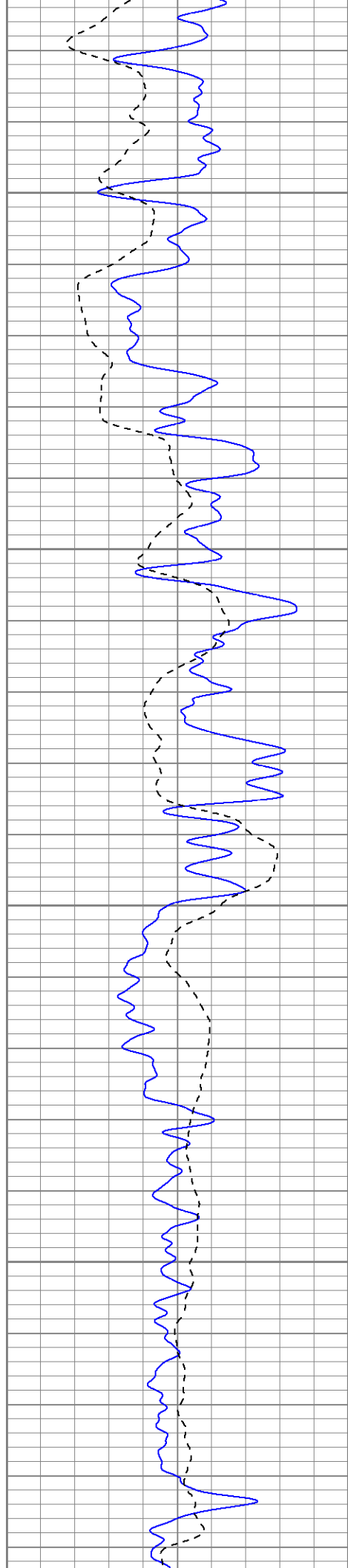
1400

1450

1500





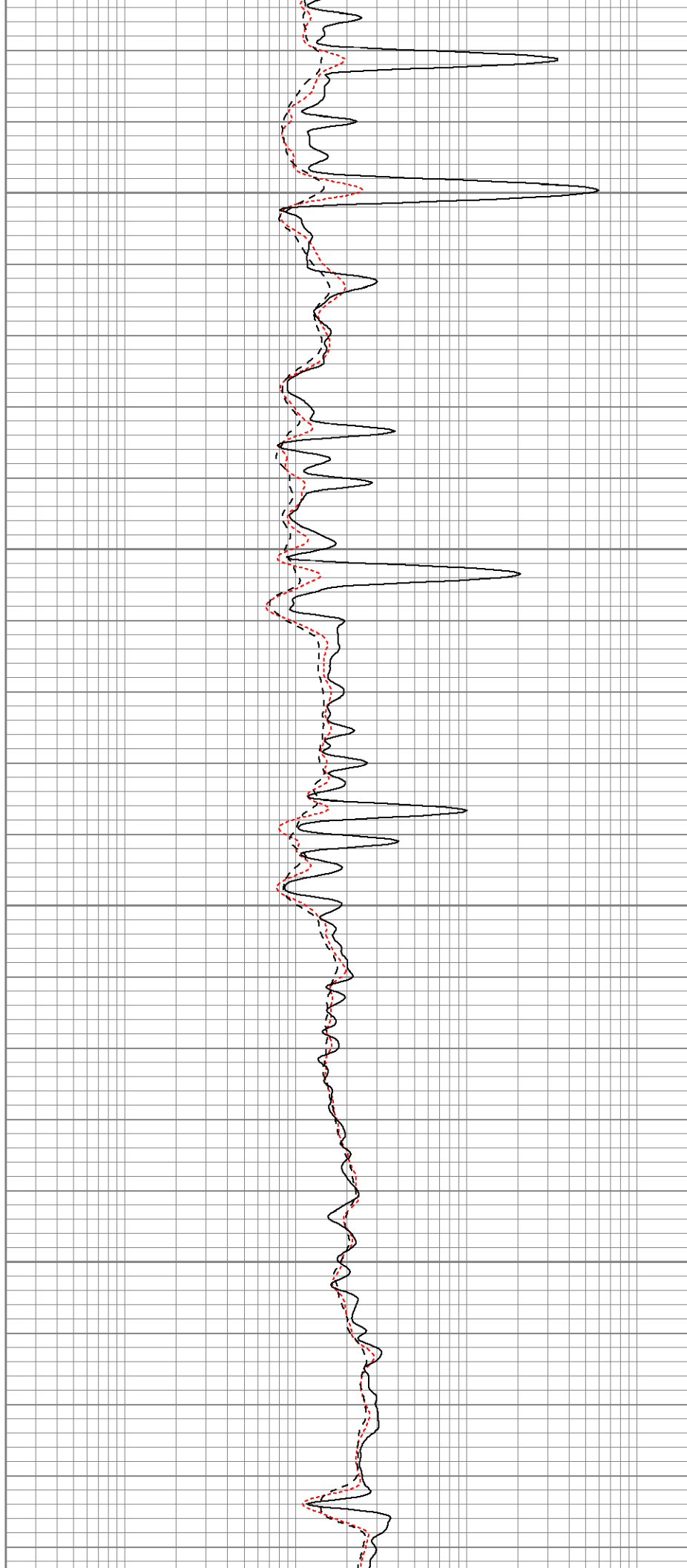


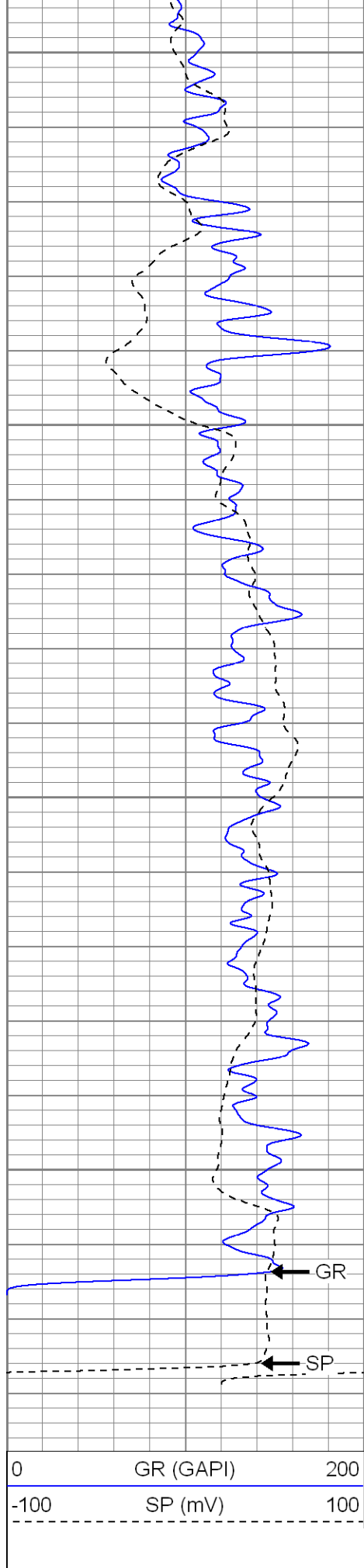
1550

1600

1650

1700





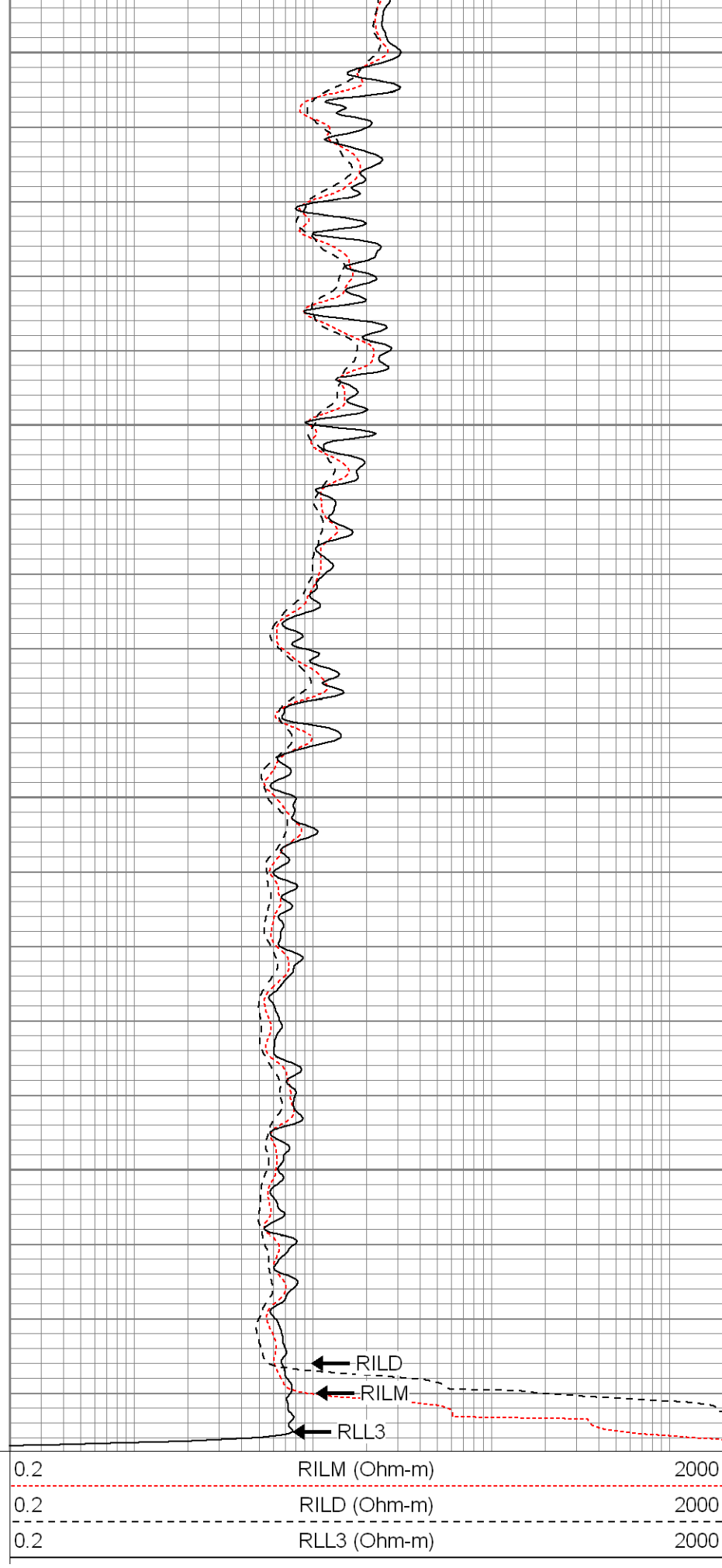
1750

1800

1850

1900

0	GR (GAPI)	200
-100	SP (mV)	100



RILD

RILM

RLL3

0.2	RILM (Ohm-m)	2000
0.2	RILD (Ohm-m)	2000
0.2	RLL3 (Ohm-m)	2000



SUPERIOR

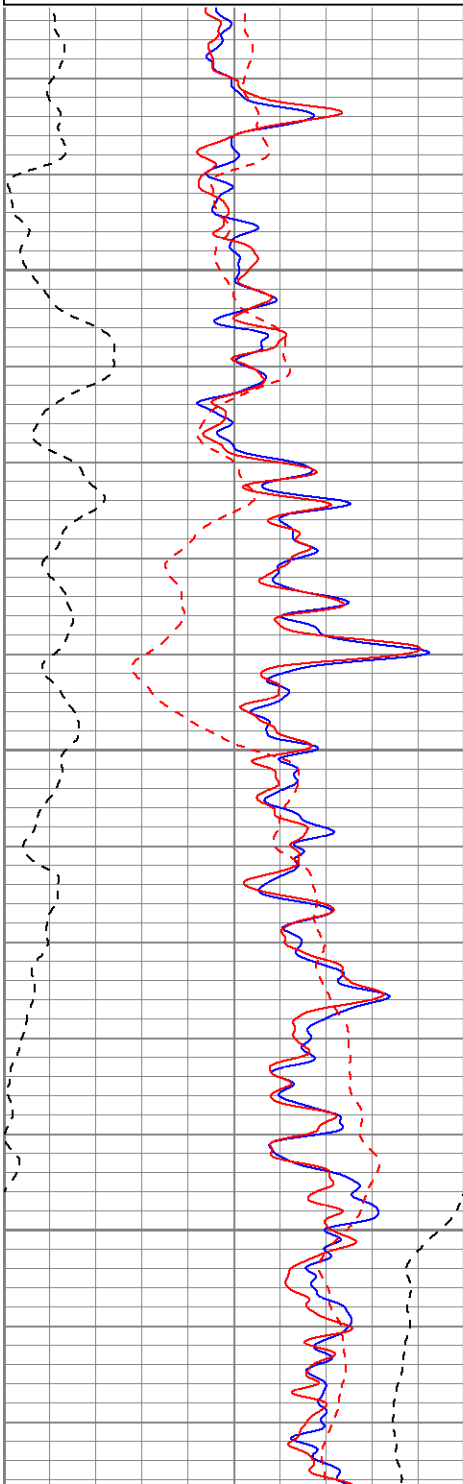
Black Lick, Pa.  
Mercer, Pa.  
Wooster, Oh.  
Cleveland, Ok.  
Trinidad, Co.

# Repeat Section

Database File: xtoge3005.db  
Dataset Pathname: pass1.1  
Presentation Format: dil  
Dataset Creation: Sun Jul 29 14:22:02 2007 by Calc Open-Cased 061129  
Charted by: Depth in Feet scaled 1:240

0	GR (GAPI)	200
-100	SP (mV)	100
0	GR-repeat (GAPI)	200
-100	SP-repeat (mV)	100

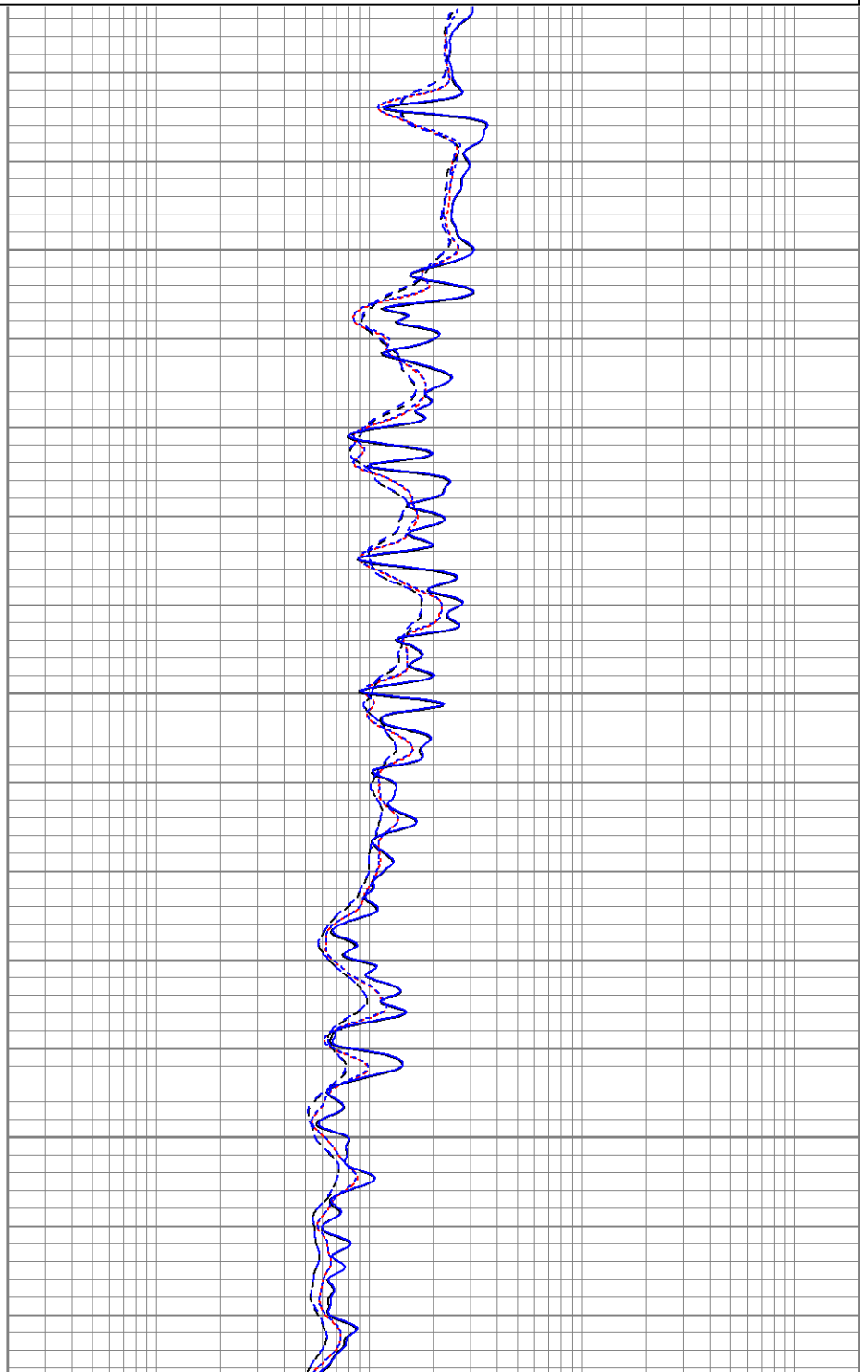
0.2	RILM (Ohm-m)	2000
0.2	RILD (Ohm-m)	2000
0.2	RLL3 (Ohm-m)	2000
0.2	RLL3-repeat (Ohm-m)	2000
0.2	RILM-repeat (Ohm-m)	2000
0.2	RILD-repeat (Ohm-m)	2000



1750

1800

1850





0.2	RILM (Ohm-m)	2000
0.2	RILD (Ohm-m)	2000
0.2	RLL3 (Ohm-m)	2000
0.2	RLL3-repeat (Ohm-m)	2000
0.2	RILM-repeat (Ohm-m)	2000
0.2	RILD-repeat (Ohm-m)	2000

```
Database File:      xtoge3005.db
Dataset Pathname:  pass2
Dataset Creation:   Sun Jul 29 13:28:16 2007 by Log Open-Cased 061129
```

Serial-Model: 5375-G  
Surface Cal Performed: Thu Jul 26 13:20:52 2007  
Downhole Cal Performed: Thu Jul 05 11:35:16 2007

Readings				References			Results	
Loop:	Air	Loop		Air	Loop		m	b
Deep	0.001	0.620	V	0.000	500.000	mmho-m	807.659	-1.119
Medium	0.005	0.743	V	0.000	550.000	mmho-m	744.727	-3.505
Internal:	Zero	Cal		Zero	Cal		m	b
Deep	0.001	0.620	V	0.000	500.000	mmho-m	807.698	-1.159
Medium	0.005	0.743	V	0.000	550.000	mmho-m	744.801	-3.569

Readings			References			Results		
Internal:	Zero	Cal		Zero	Cal		m	b
Deep	0.123	499.901	mmho-m	0.039	500.015	mmho-m	1.000	-0.084
Medium	0.245	549.982	mmho-m	0.064	550.009	mmho-m	1.000	-0.182
Shallow	2.506	0.009	V	500.000	2.000	Ohm-m	150.000	0.000

# Gamma Ray Calibration Report

