



SUPERIOR
WELL SERVICES
Black Lick, Pa.
Mercer, Pa.
Wooster, Oh.
Cleveland, Ok.
Trinidad, Co.

CEMENT BOND LOG

Company XTO Energy Inc.
Well Hill Ranch 01-12
Field Purgatoire River
County Las Animas State Colorado

Location: API # : 05 071 09562 00

2314' FSL & 645' FWL

SEC 01 TWP 35S RGE 68W

Permanent Datum Ground Level Elevation 8659'
Log Measured From Ground Level
Drilling Measured From Ground Level

Other Services
TEMP
Elevation
K.B. -----
D.F. -----
G.L. 8659'

Date 4-22-09

Run Number	One		
Depth Driller	2275'		
Depth Logger	1925'		
Bottom Logged Interval	1921'		
Top Log Interval	Surface		
Open Hole Size	7 7/8"		
Type Fluid	Water		
Density / Viscosity	///		
Max. Recorded Temp.	92 DEG F		
Estimated Cement Top	Surface		
Time Well Ready	12:10 P.M.		
Time Logger on Bottom	12:22 P.M.		
Equipment Number	T697		
Location	Trinidad		
Recorded By	J. Cappellucci		
Witnessed By	Mr. E. Haught		

Borehole Record				Tubing Record			
Run Number	Bit	From	To	Size	Weight	From	To

Casing Record	Size	Wgt/Ft	Top	Bottom
Surface String	8 5/8"		00	454'
Prot. String				
Production String	5 1/2"		00	1930'
Liner				

<<< Fold Here >>>

All interpretations are opinions based on inferences from electrical or other measurements and we cannot and do not guarantee the accuracy or correctness of any interpretation, and we shall not, except in the case of gross or willful negligence on our part, be liable or responsible for any loss, costs, damages, or expenses incurred or sustained by anyone resulting from any interpretation made by any of our officers, agents or employees. These interpretations are also subject to our general terms and conditions set out in our current Price Schedule.

Comments

Well Directions:

Lorencito, take door # 6 to top of hill, stay on main road past trash dumpster, stay straight, at Y stay left, stay on main road, at beige tank stay right, at big rocks take left, end on fifth location on bottom of hill.



SUPERIOR
Black Lick, Pa.
Mercer, Pa.
Wooster, Oh.
Cleveland, Ok.
Trinidad, Co.

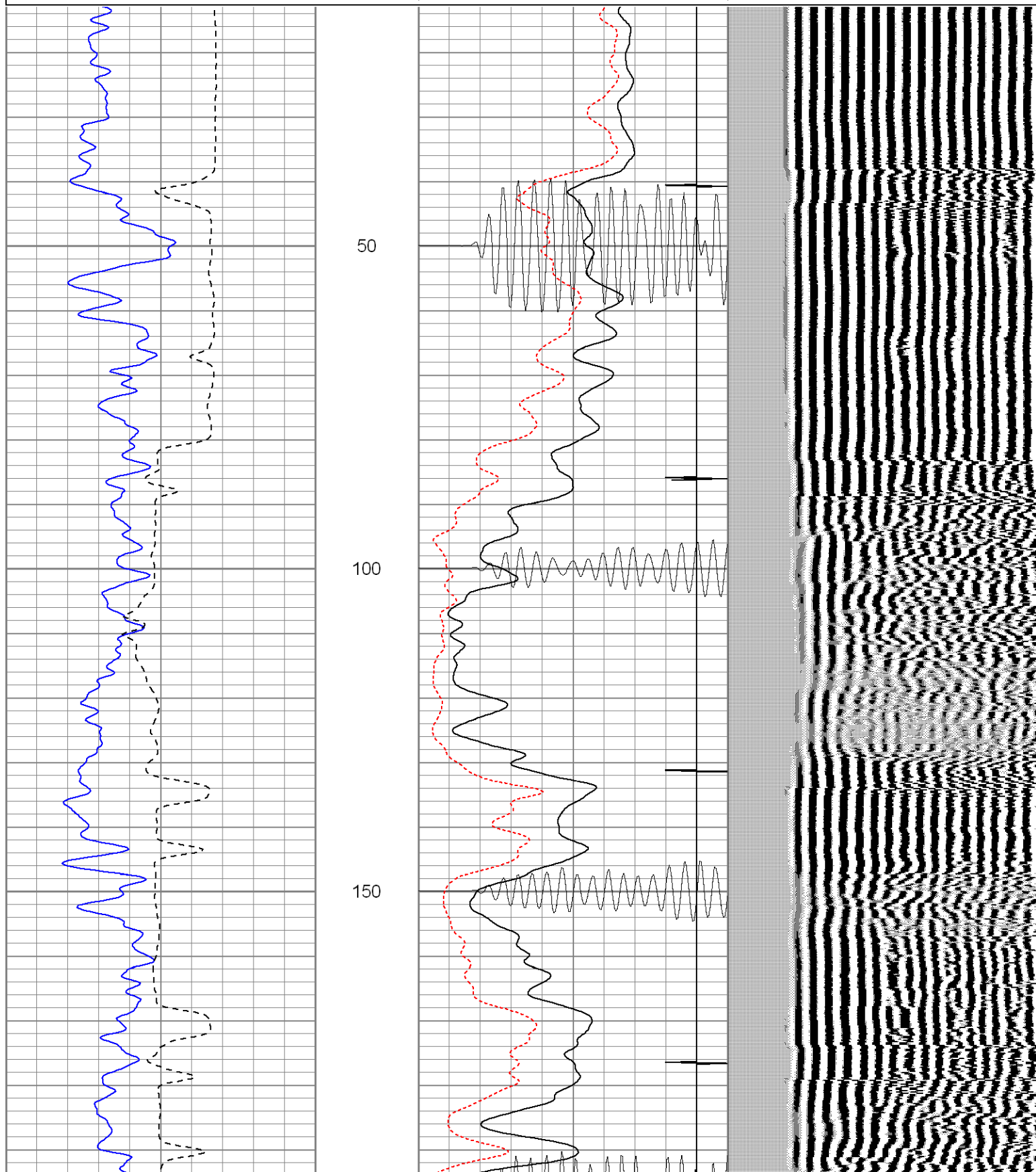
Main Pass

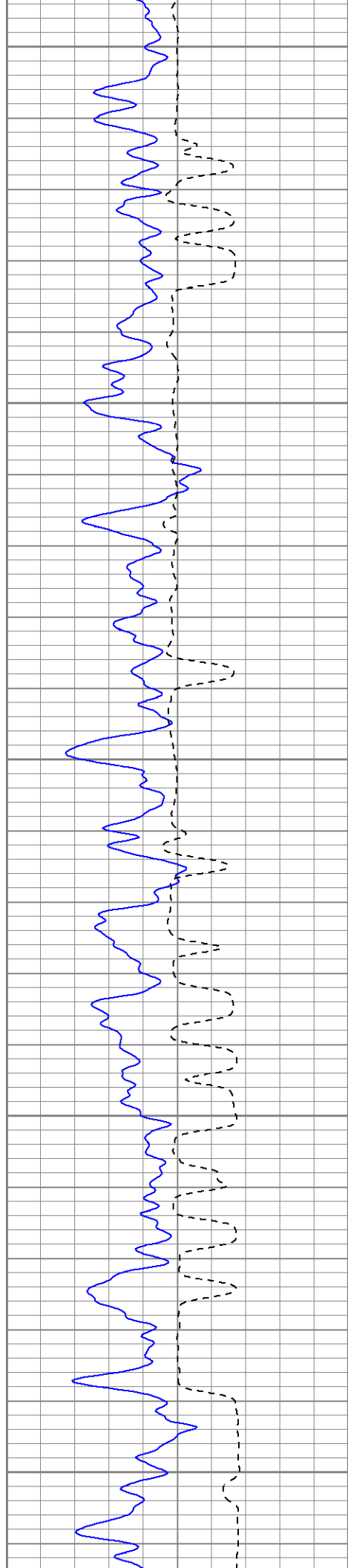
Database File: xtohr0112042209b.db
Dataset Pathname: pass2.1
Presentation Format: cblrtd
Dataset Creation: Wed Apr 22 13:12:22 2009 by Calc Open-Cased 071220
Charted by: Depth in Feet scaled 1:240

0	GR (GAPI)	200
400	TT3 (usec)	200

0	AMP3 (mV)	100
18	CCL	-2
200	CBL5	1200
0	AMP5 (mV)	100

200	Variable Density	1200
-----	------------------	------





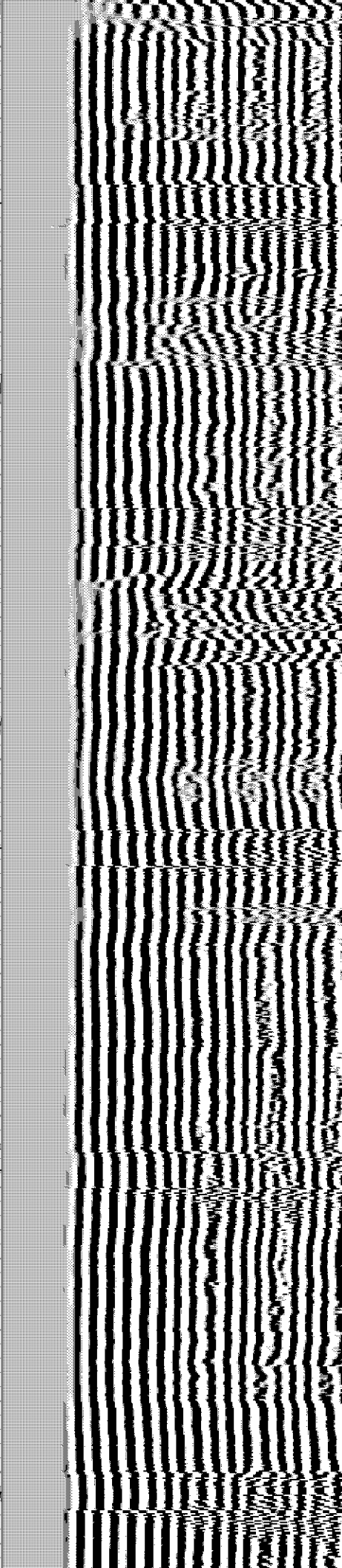
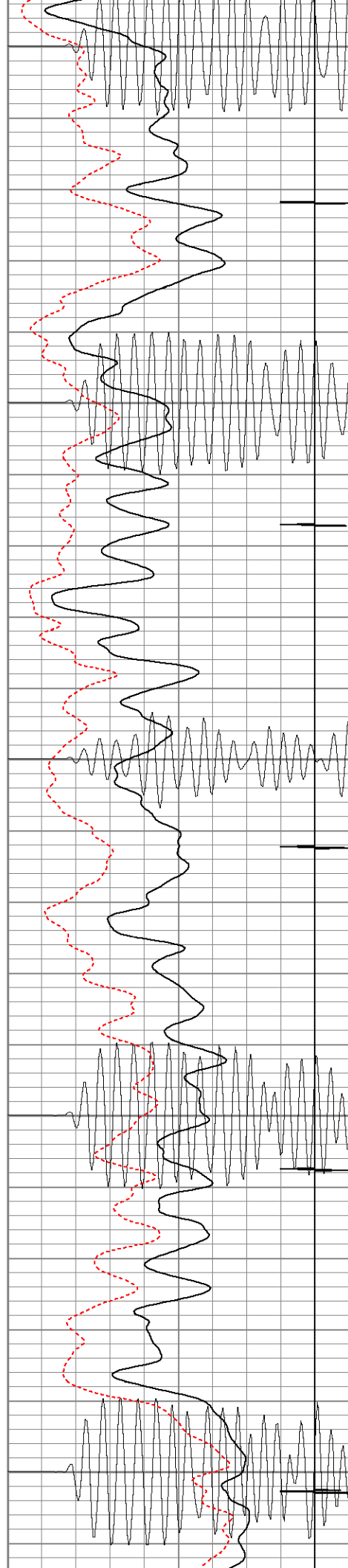
200

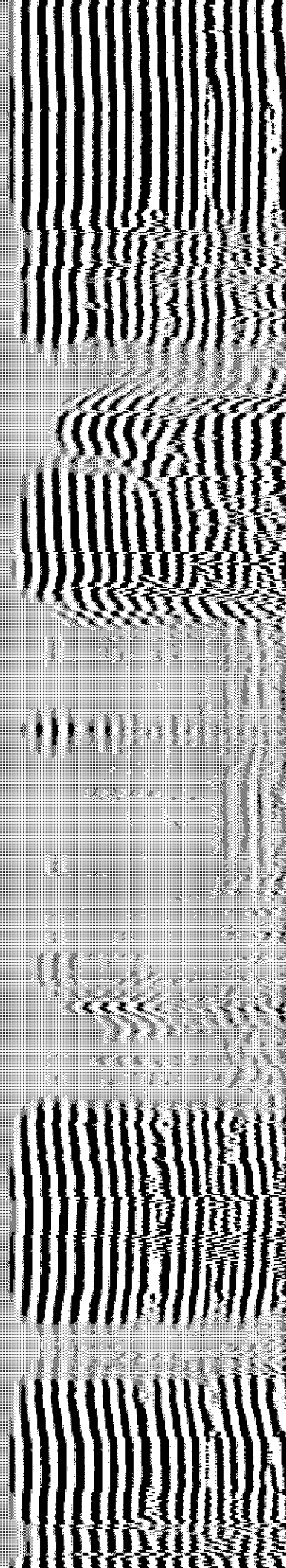
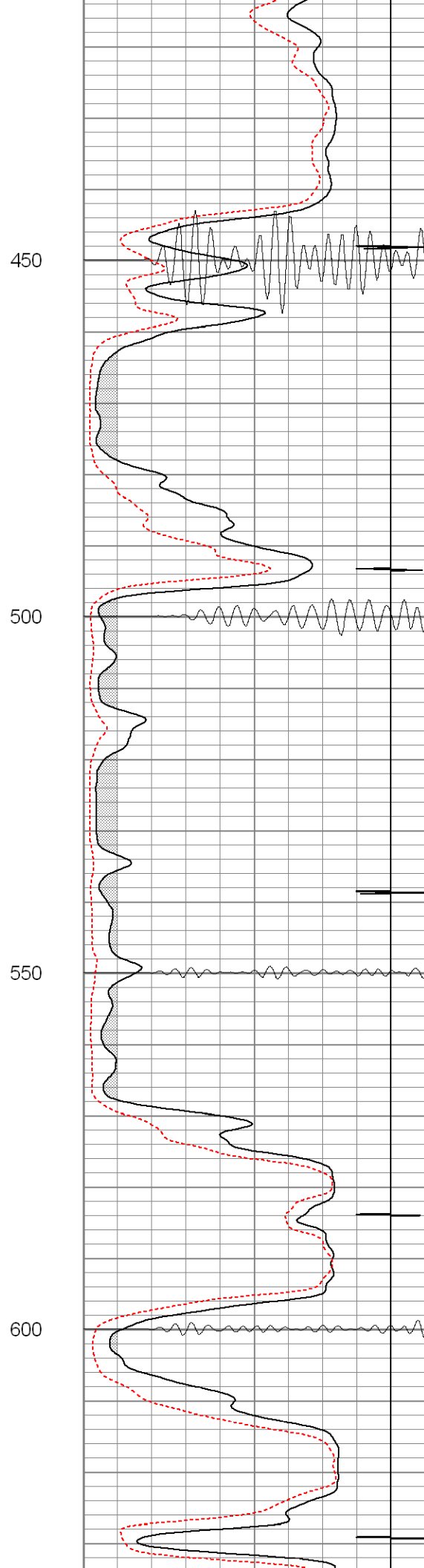
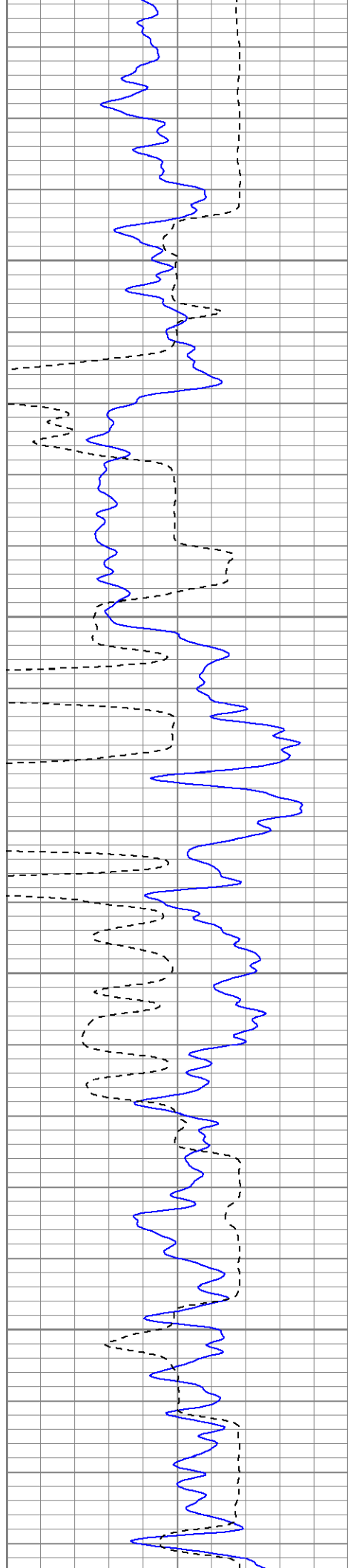
250

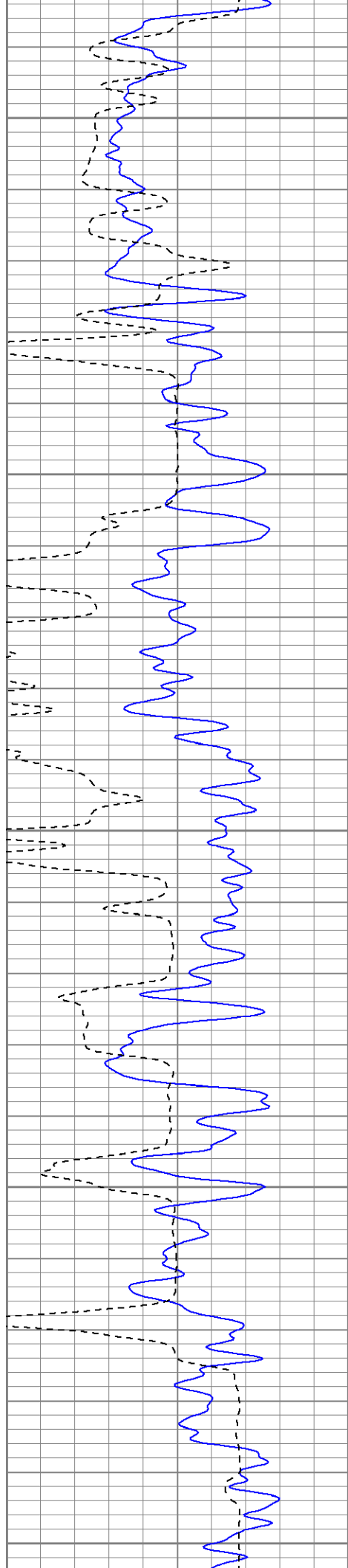
300

350

400







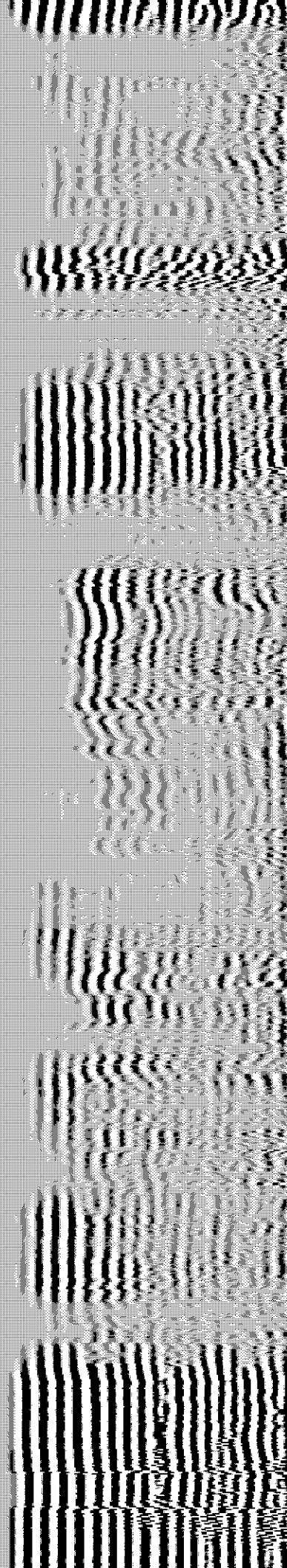
650

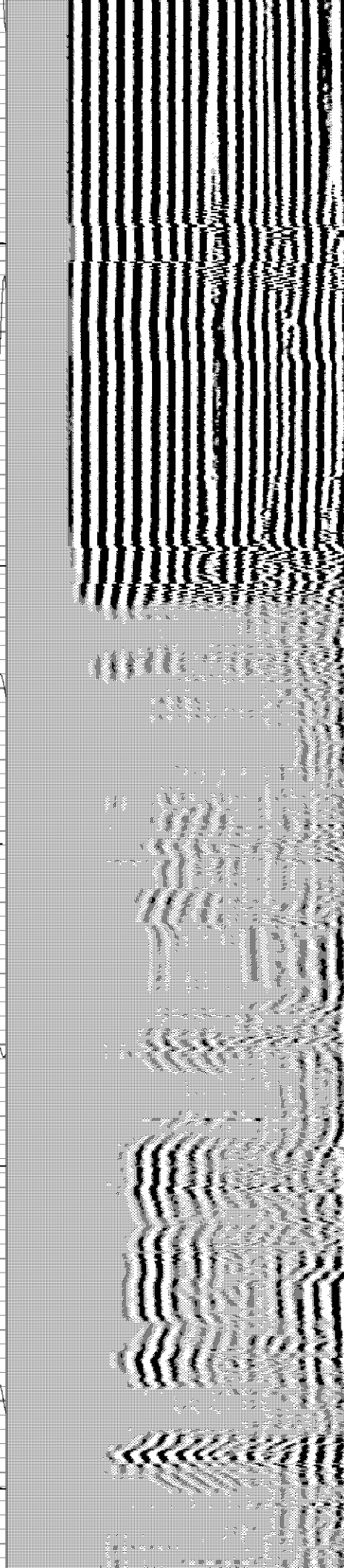
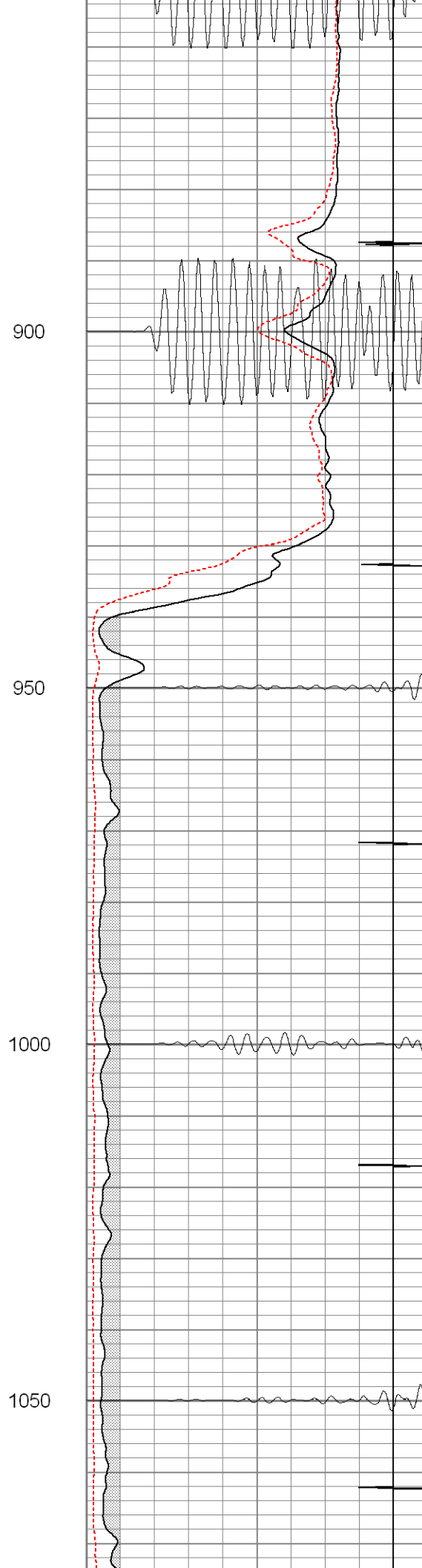
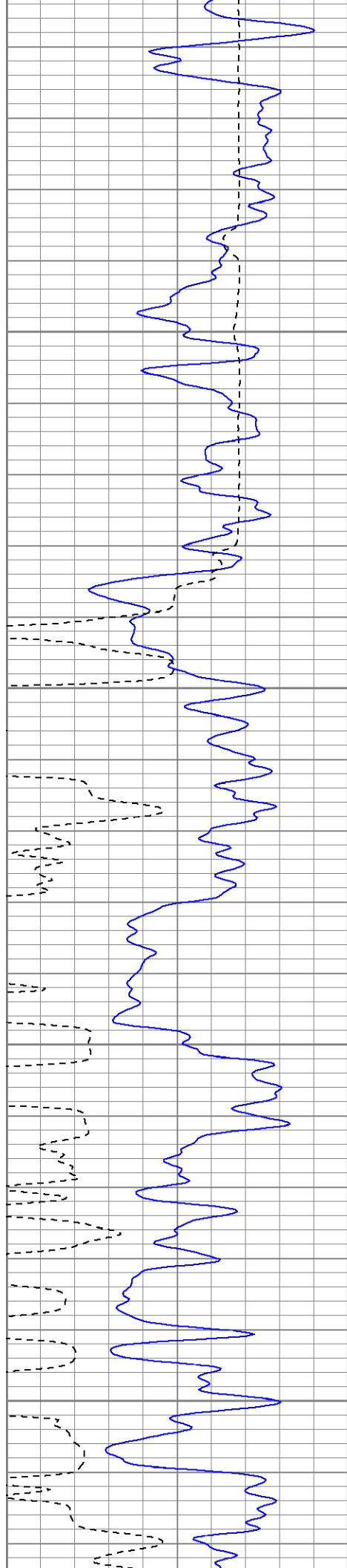
700

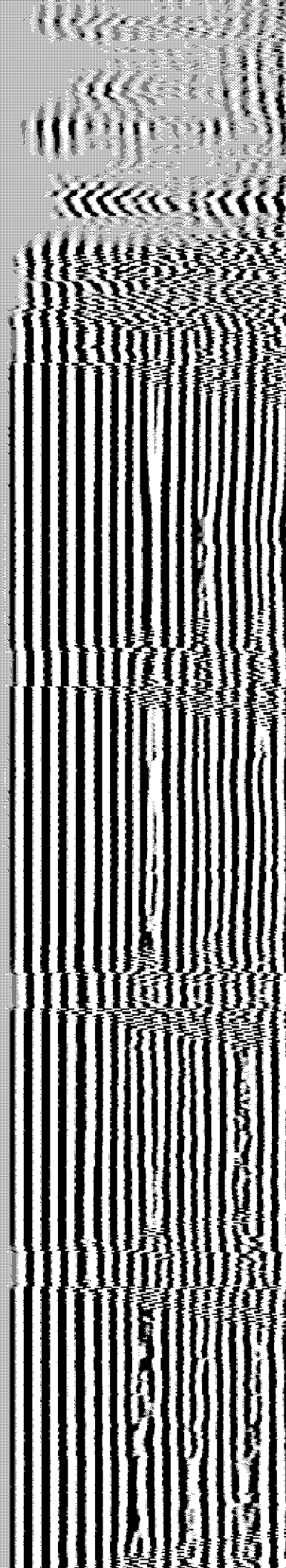
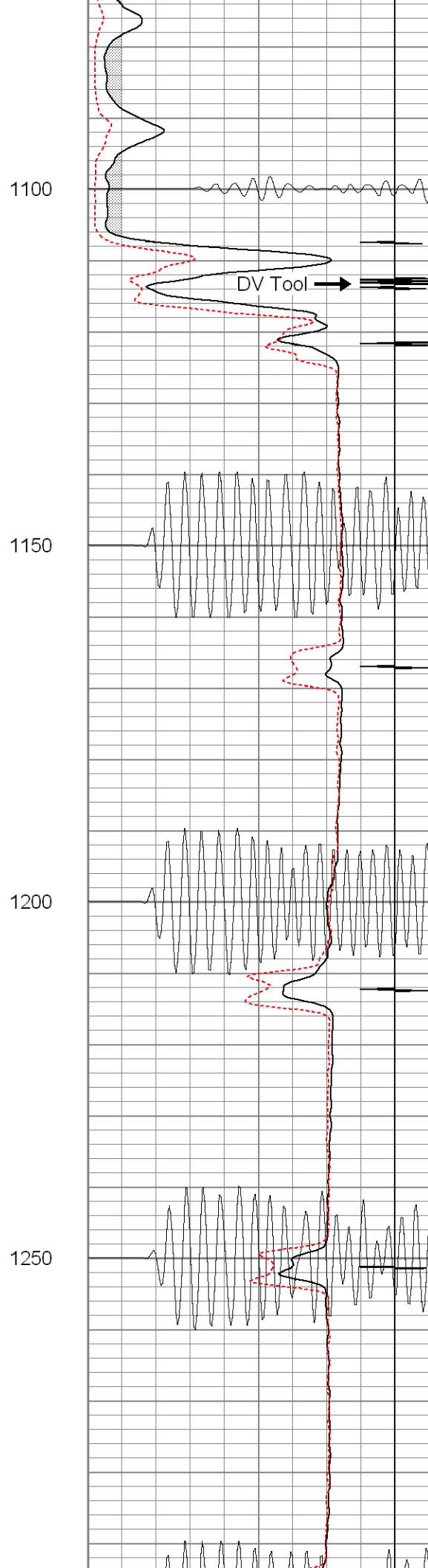
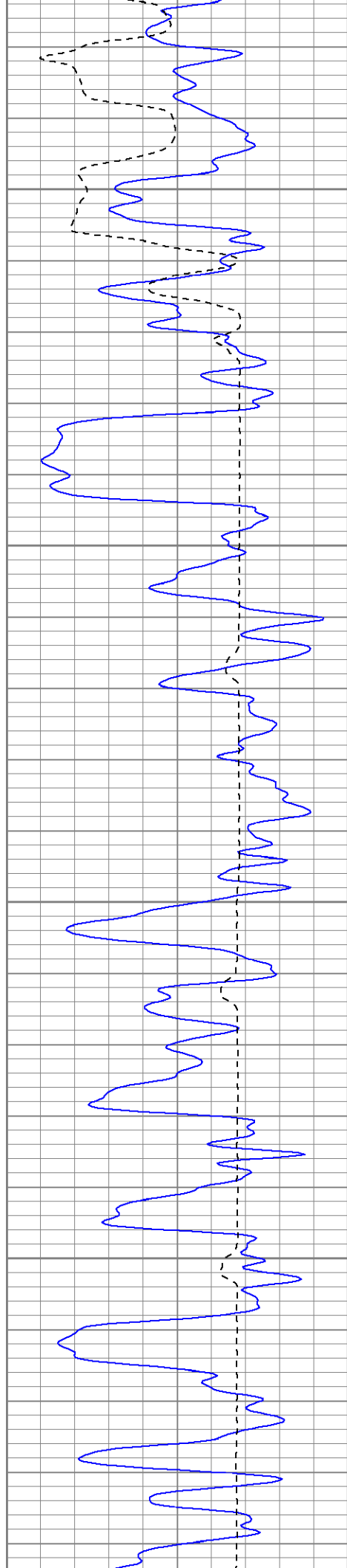
750

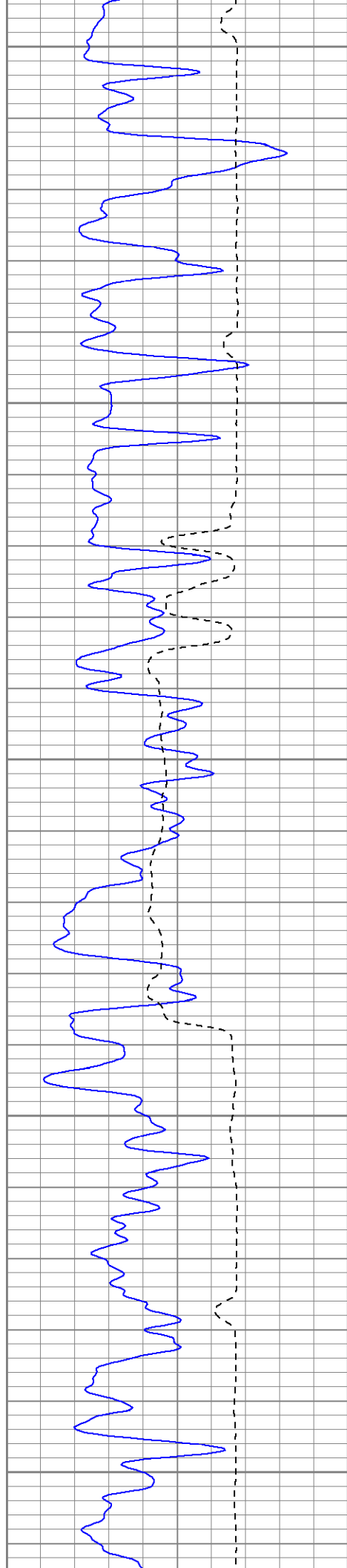
800

850









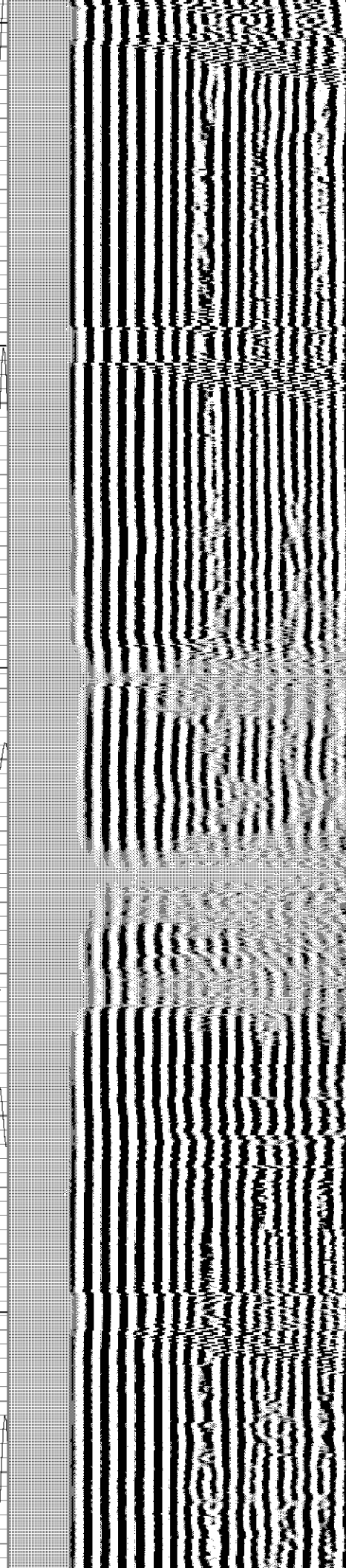
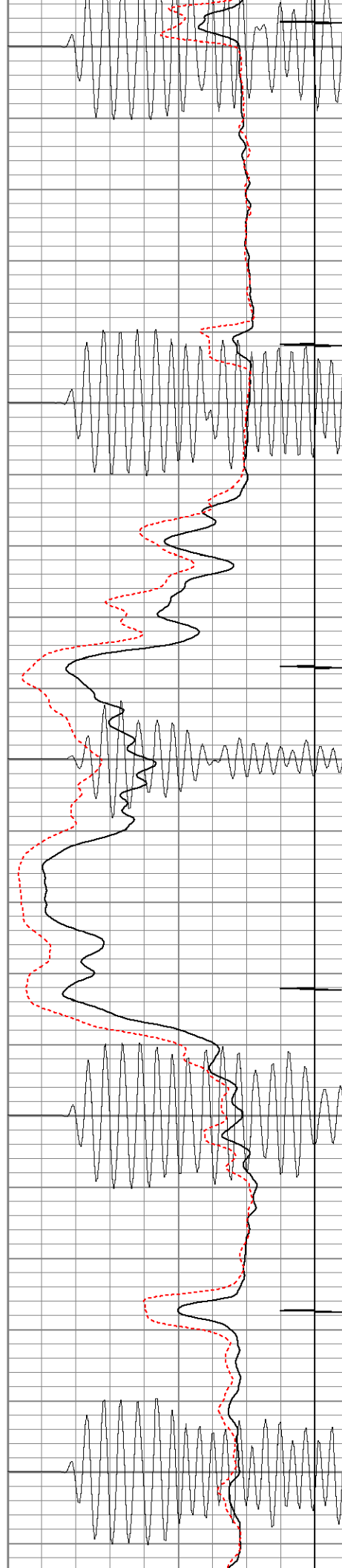
1300

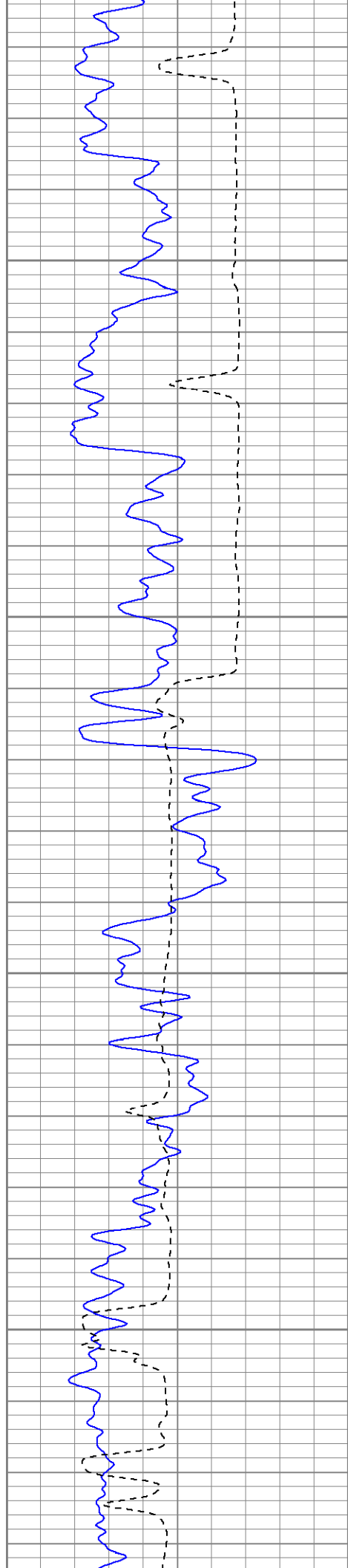
1350

1400

1450

1500



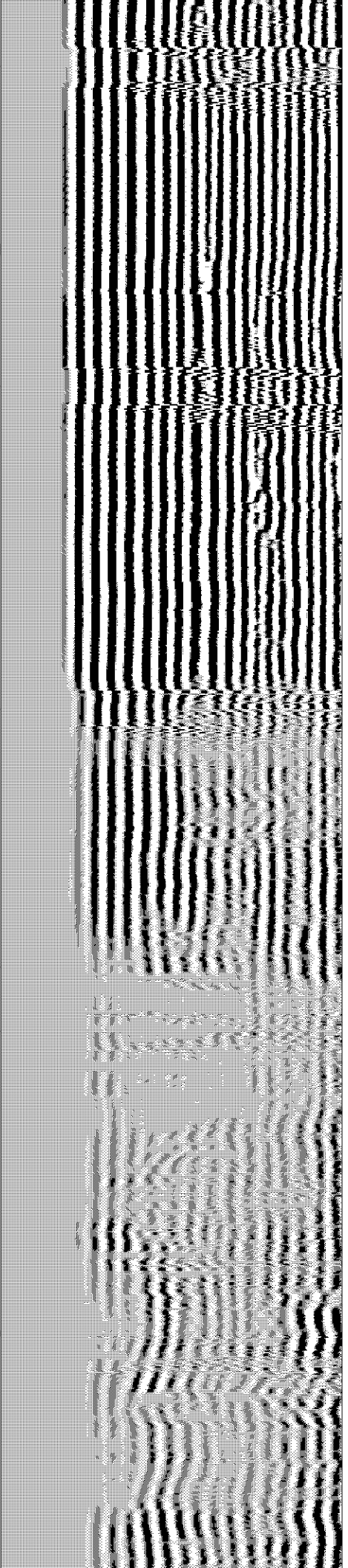
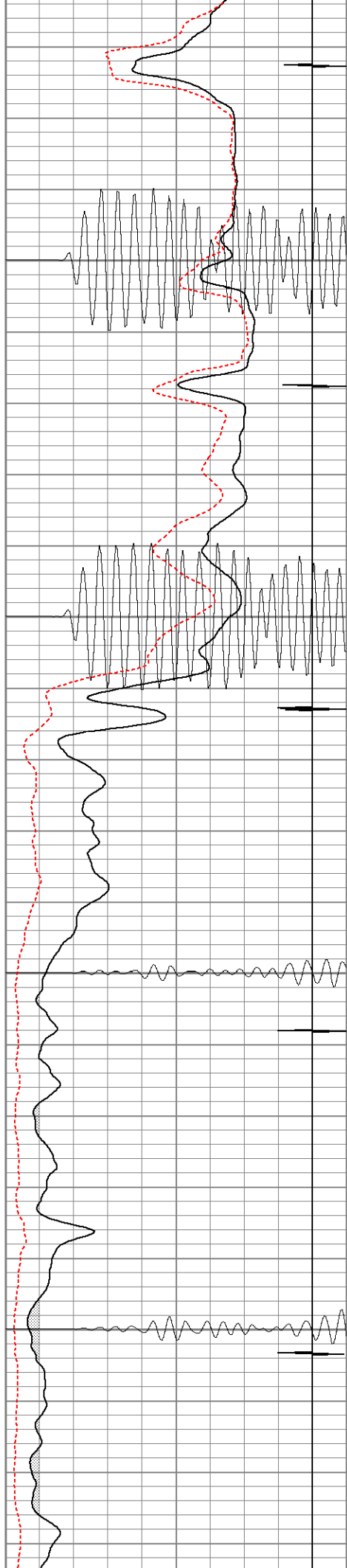


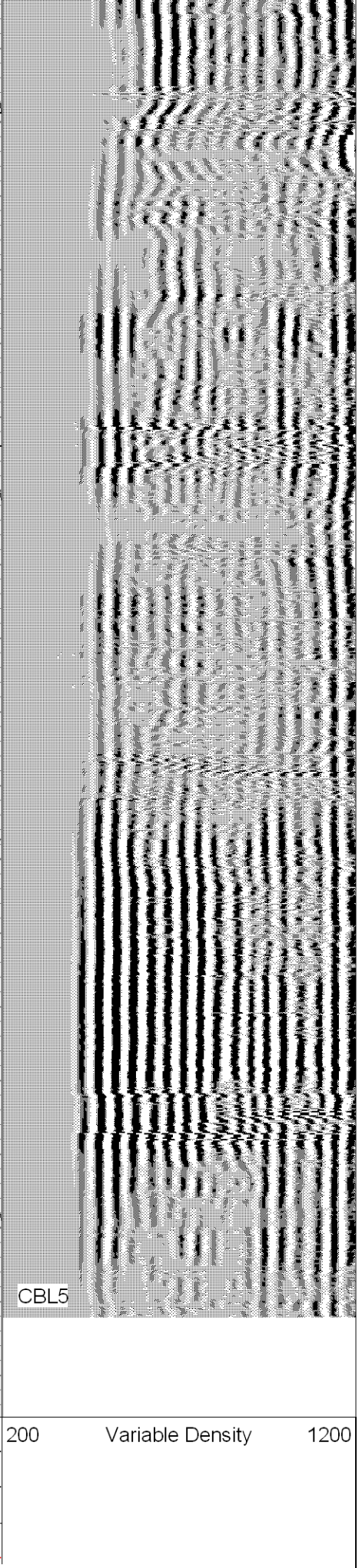
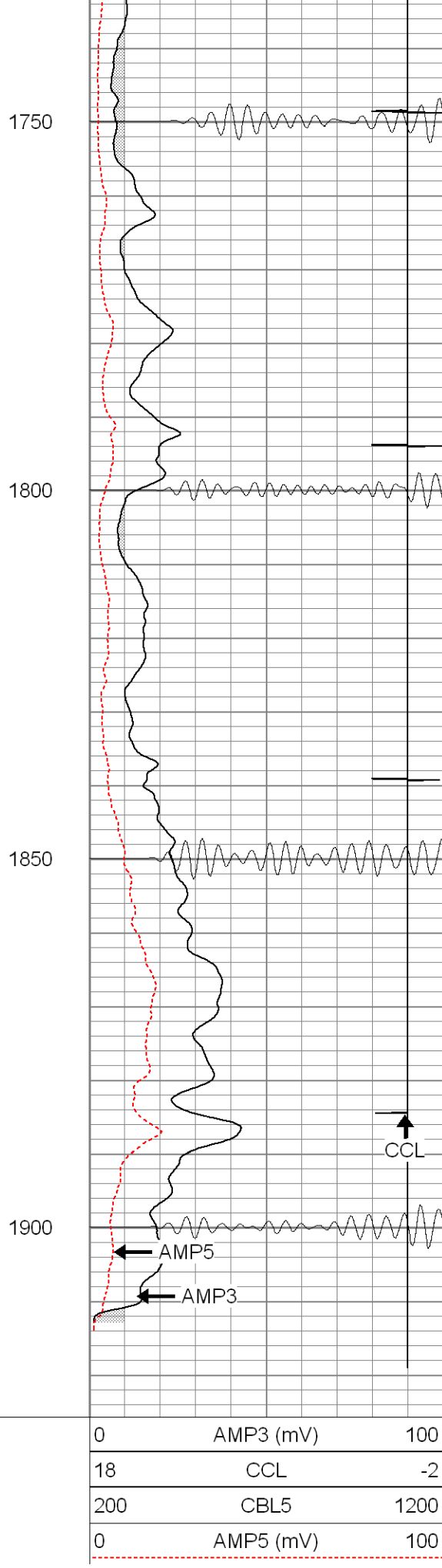
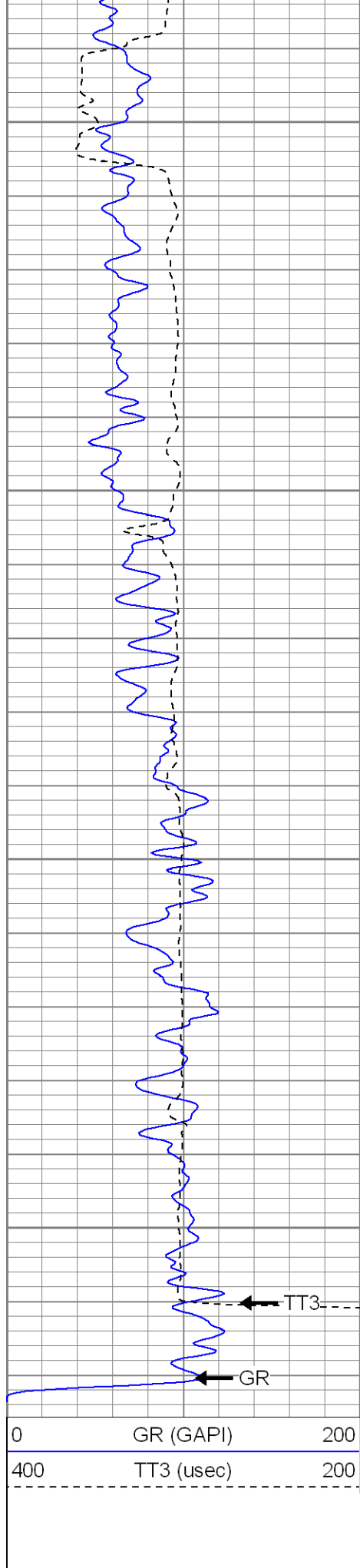
1550

1600

1650

1700







SUPERIOR

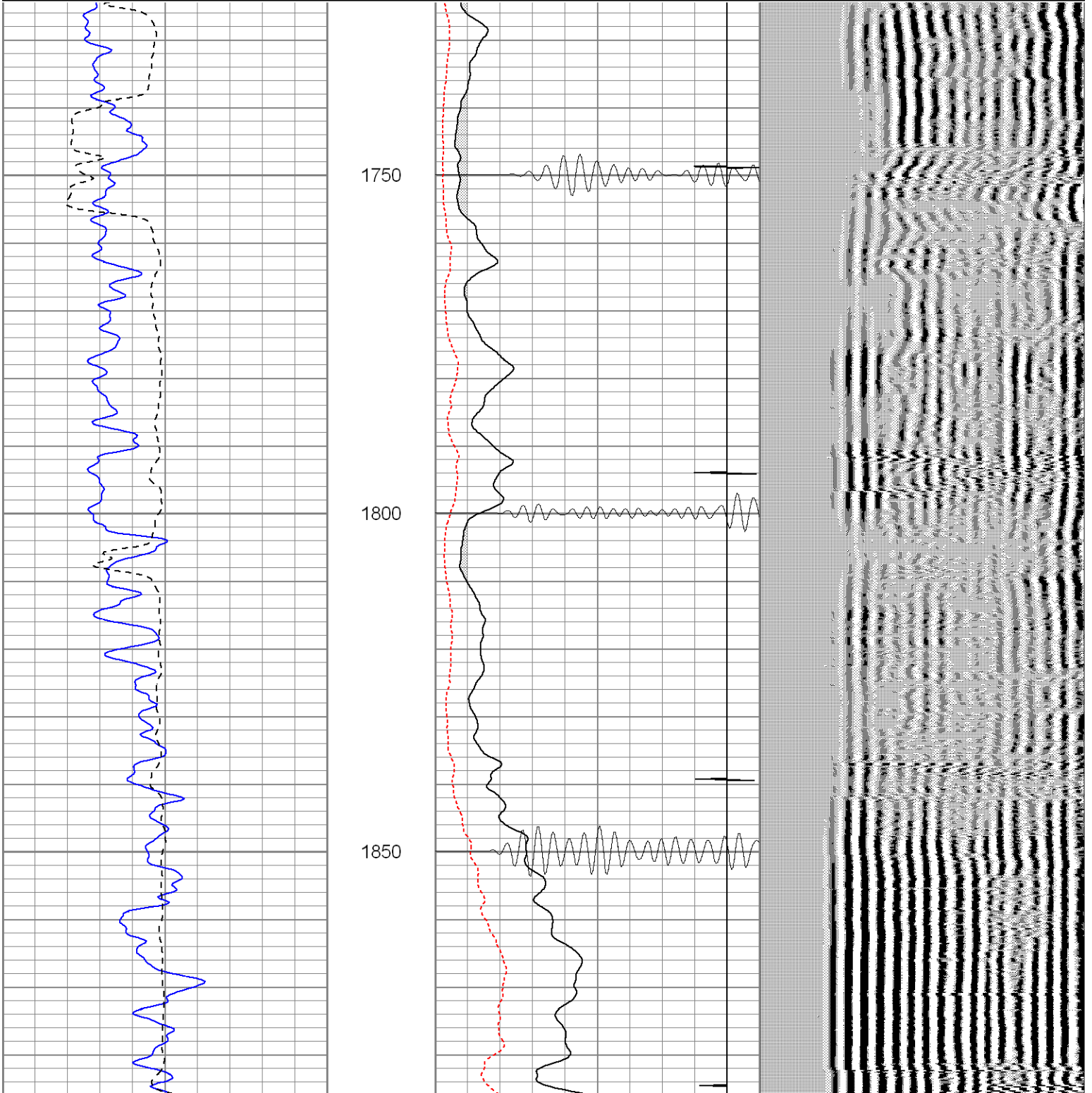
Black Lick, Pa.
Mercer, Pa.
Wooster, Oh.
Cleveland, Ok.
Trinidad, Co.

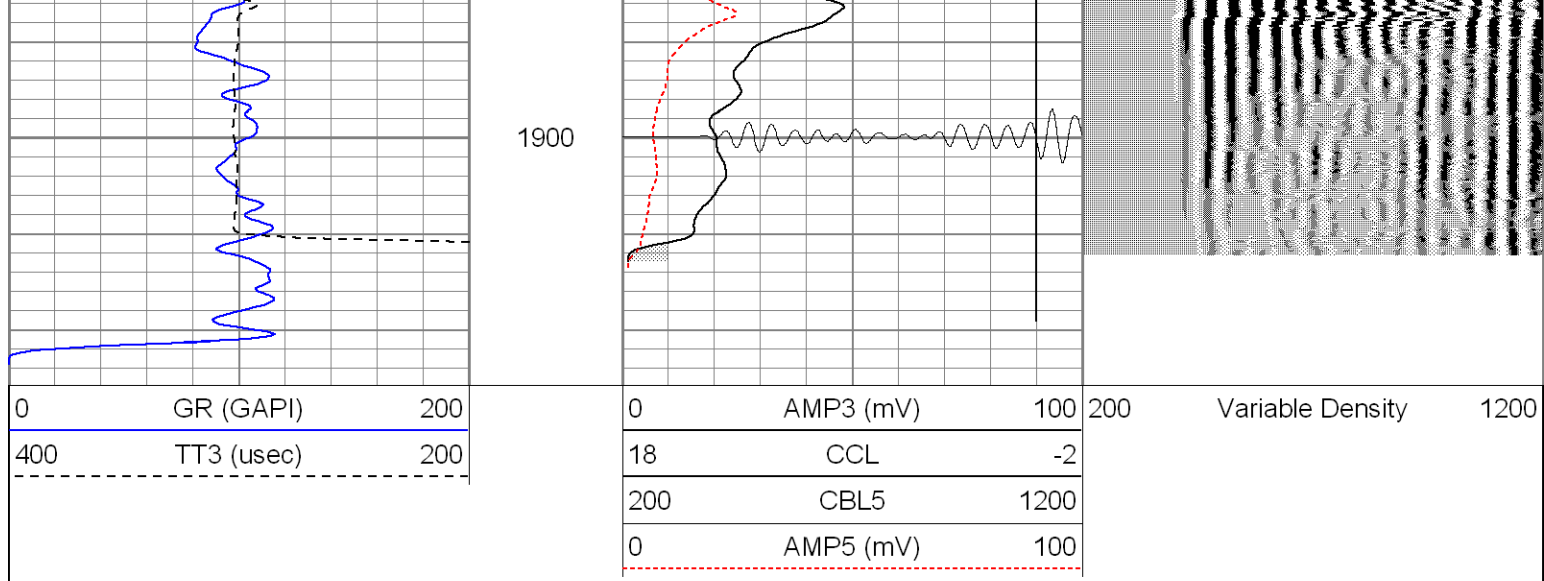
Repeat Section

Database File: xtohr0112042209b.db
Dataset Pathname: pass1.1
Presentation Format: cblrtd
Dataset Creation: Wed Apr 22 13:14:49 2009 by Calc Open-Cased 071220
Charted by: Depth in Feet scaled 1:240

0	GR (GAPI)	200
400	TT3 (usec)	200

0	AMP3 (mV)	100	200	Variable Density	1200
18	CCL	-2			
200	CBL5	1200			
0	AMP5 (mV)	100			





Calibration Report

Database File: xtohr0112042209b.db
 Dataset Pathname: pass1
 Dataset Creation: Wed Apr 22 12:22:39 2009 by Log Open-Cased 071220

Gamma Ray Calibration Report

Serial Number: 081015
 Tool Model: 275D_INC
 Performed: Thu Jan 15 09:32:25 2009

Calibrator Value: 200.0 GAPI

Background Reading: 50.0 cps
 Calibrator Reading: 250.0 cps

Sensitivity: 1.0000 GAPI/cps

Inclinometer Calibration Report

Performed: Thu Jan 15 09:53:41 2009

	Low Read.	High Read.	Low Ref.	High Ref.	
X Accelerometer	-3568.00	3589.40	-1.00	1.00	gee
Y Accelerometer	-3621.60	3494.00	-1.00	1.00	gee
Z Accelerometer					

Cement Bond Log Calibration Report

Serial Number: 081024
 Tool Model: PROBEDIITALCBL
 Performed: Tue Apr 07 10:52:48 2009

Depth: 49.8253 ft
 Casing Diameter: 5.5 in

	3' Spacing	5' Spacing	
Signal Zero:	0	0	mV
Calibrated Amplitude:	75	75	mV
Reading at Signal Zero:	-0.04	-0.04	V
Reading in Free Pipe:	2.1	2.3	V

32.0513
1.28205

Dataset: xtohr0112042209b.db: field/well/run1/pass1
Total Length: 23.00 ft
Total Weight: 236.50 lb
O.D. 2.75 in