



SUPERIOR
Black Lick, Pa.
Mercer, Pa.
Wooster, Oh.
Cleveland, Ok.
Trinidad, Co.

DUAL INDUCTION LOG

Company XTO Energy Inc.
Well Hill Ranch 06-04
Field Purgatoire River
County Las Animas State Colorado

Location: API # : 05 071 09566 00

327 FNL & 900' FWL

SEC 06 TWP 35S RGE 67W

Permanent Datum Ground Level Elevation 8517'
Log Measured From Ground Level
Drilling Measured From Ground Level

Other Services
CDL
NEU
Elevation
K.B. -----
D.F. -----
G.L. 8517'

Date 3-17-09

Run Number One

Depth Driller 3050'

Depth Logger 3043'

Bottom Logged Interval 3041'

Top Log Interval Surface Casing

Casing Driller 8 5/8" @ 446'

Casing Logger 448'

Bit Size 7 7/8"

Type Fluid in Hole Water

Density / Viscosity ///

pH / Fluid Loss ///

Source of Sample ///

Rm @ Meas. Temp ///

Rmf @ Meas. Temp ///

Rmc @ Meas. Temp ///

Source of Rmf / Rmc ///

Rm @ BHT ///

Time Circulation Stopped 5:30 P.M.

Time Logger on Bottom 8:45 P.M.

Maximum Recorded Temperature 130 DEG F

Equipment Number T697

Location Trinidad

Recorded By J. Cappellucci

Witnessed By Mr. Dalton King

<<< Fold Here >>>

All interpretations are opinions based on inferences from electrical or other measurements and we cannot and do not guarantee the accuracy or correctness of any interpretation, and we shall not, except in the case of gross or willful negligence on our part, be liable or responsible for any loss, costs, damages, or expenses incurred or sustained by anyone resulting from any interpretation made by any of our officers, agents or employees. These interpretations are also subject to our general terms and conditions set out in our current Price Schedule.

Comments

Well Directions:

Lorencito, take door # 6 to top of hill, stay on main road past trash dumpster, stay straight, at Y stay left, stay on main road, at beige tank stay right, at big rocks take left, end on second location on left.



SUPERIOR
Black Lick, Pa.
Mercer, Pa.
Wooster, Oh.
Cleveland, Ok.
Trinidad, Co.

Main Pass

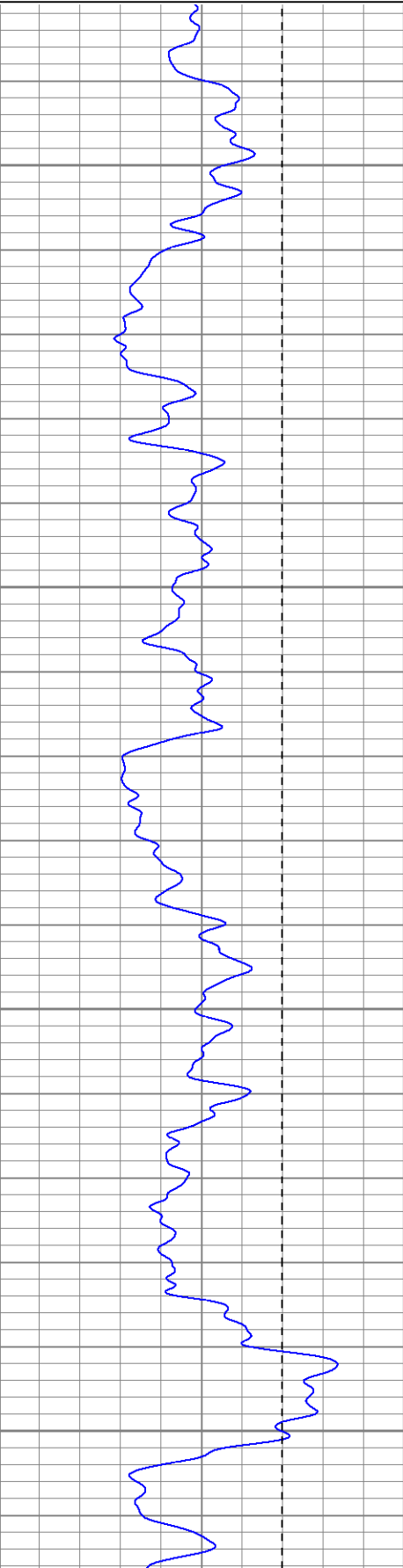
Database File: xtohr0604.db
Dataset Pathname: pass2.2
Presentation Format: dil
Dataset Creation: Tue Mar 17 22:54:22 2009 by Calc Open-Cased 071220
Charted by: Depth in Feet scaled 1:240

0	GR (GAPI)	200
0	SP (mV)	200

0.2	RILM (Ohm-m)	2000

0.2	RILD (Ohm-m)	2000

0.2	RLL3 (Ohm-m)	2000

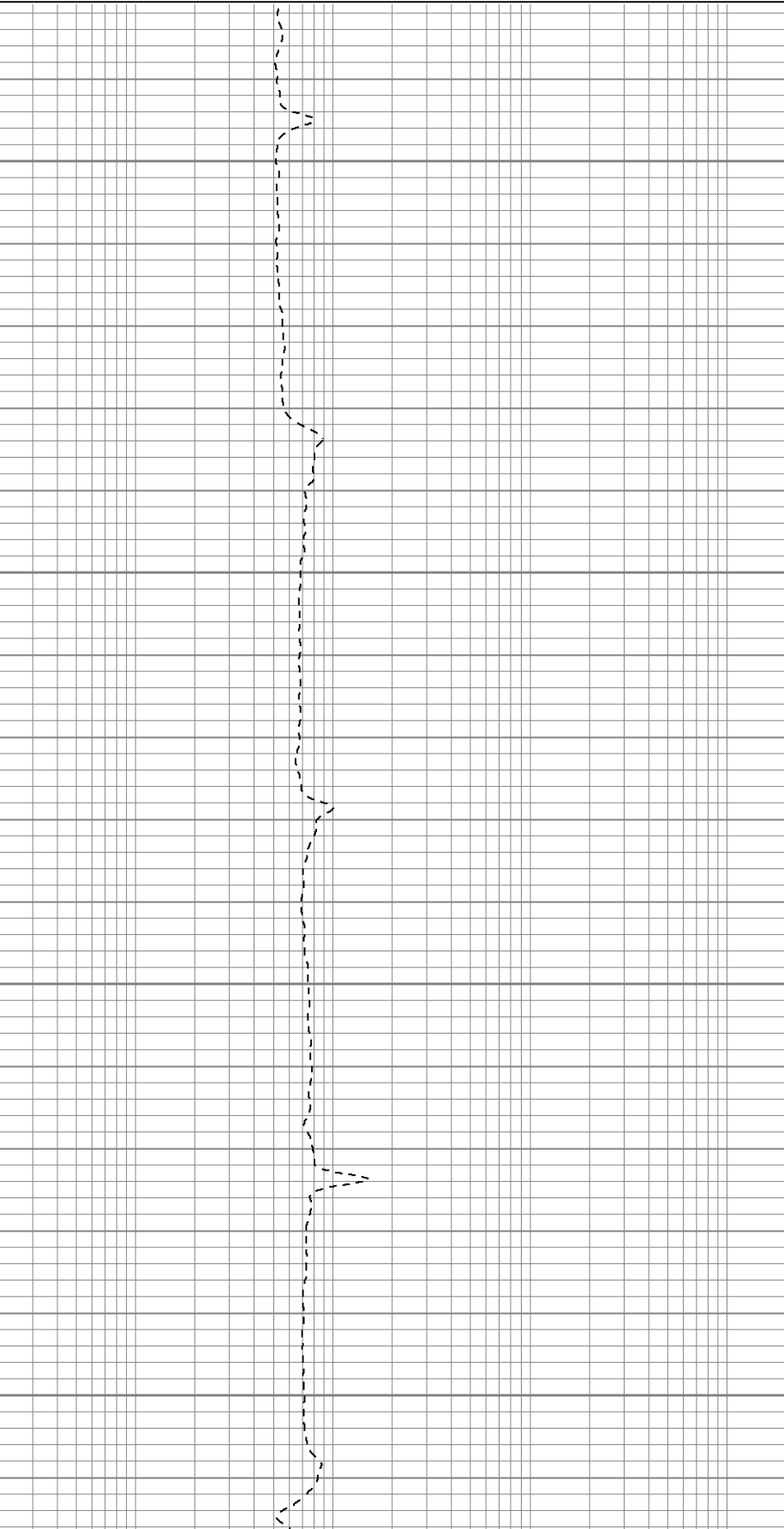


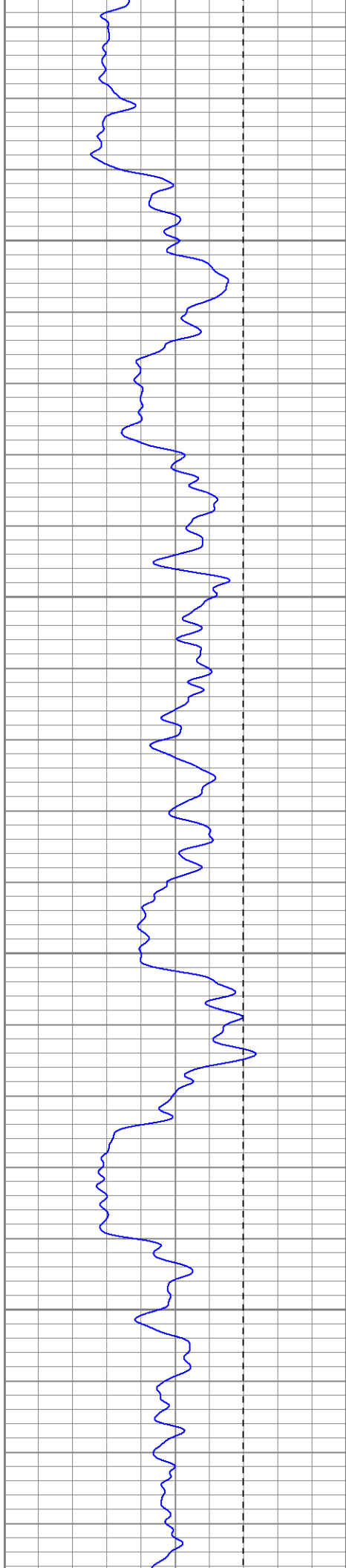
50

100

150

200



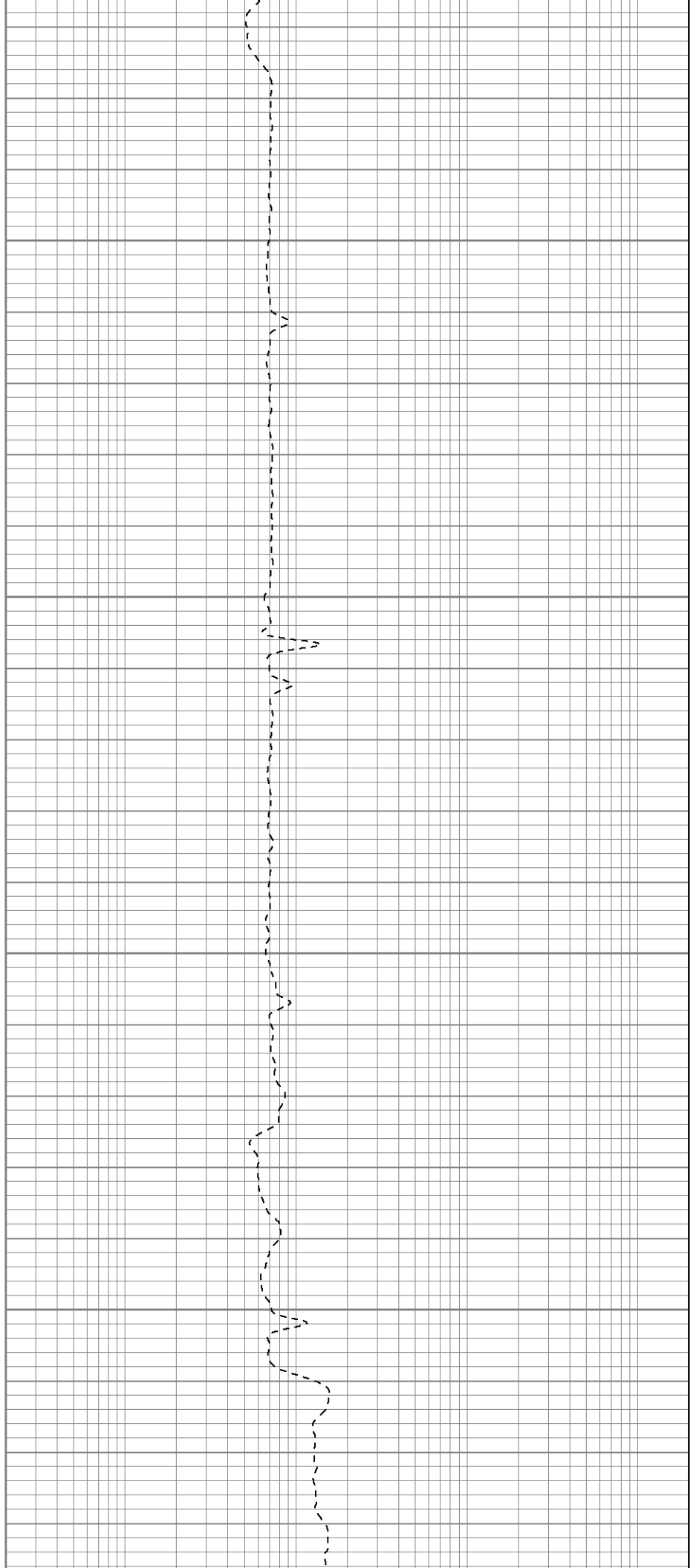


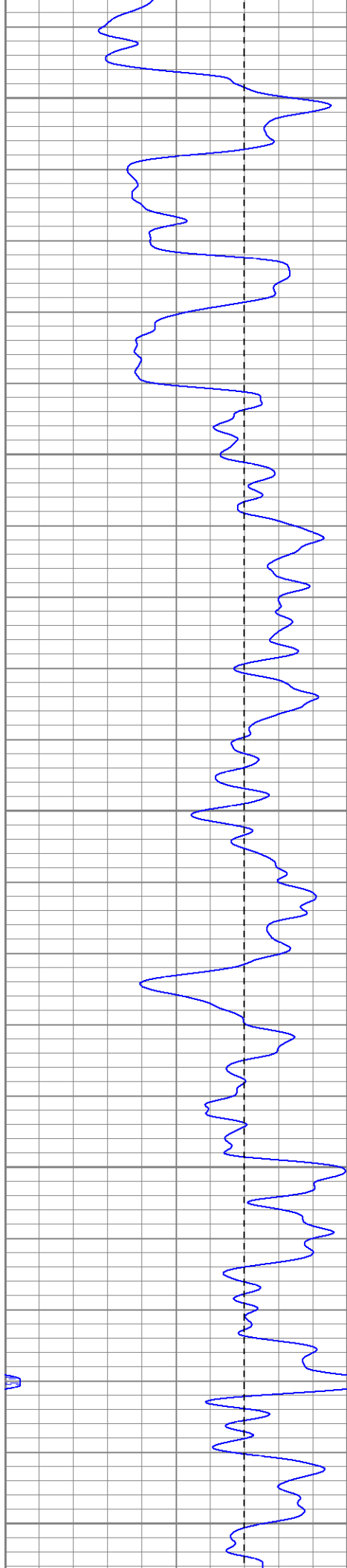
250

300

350

400





Surface Casing

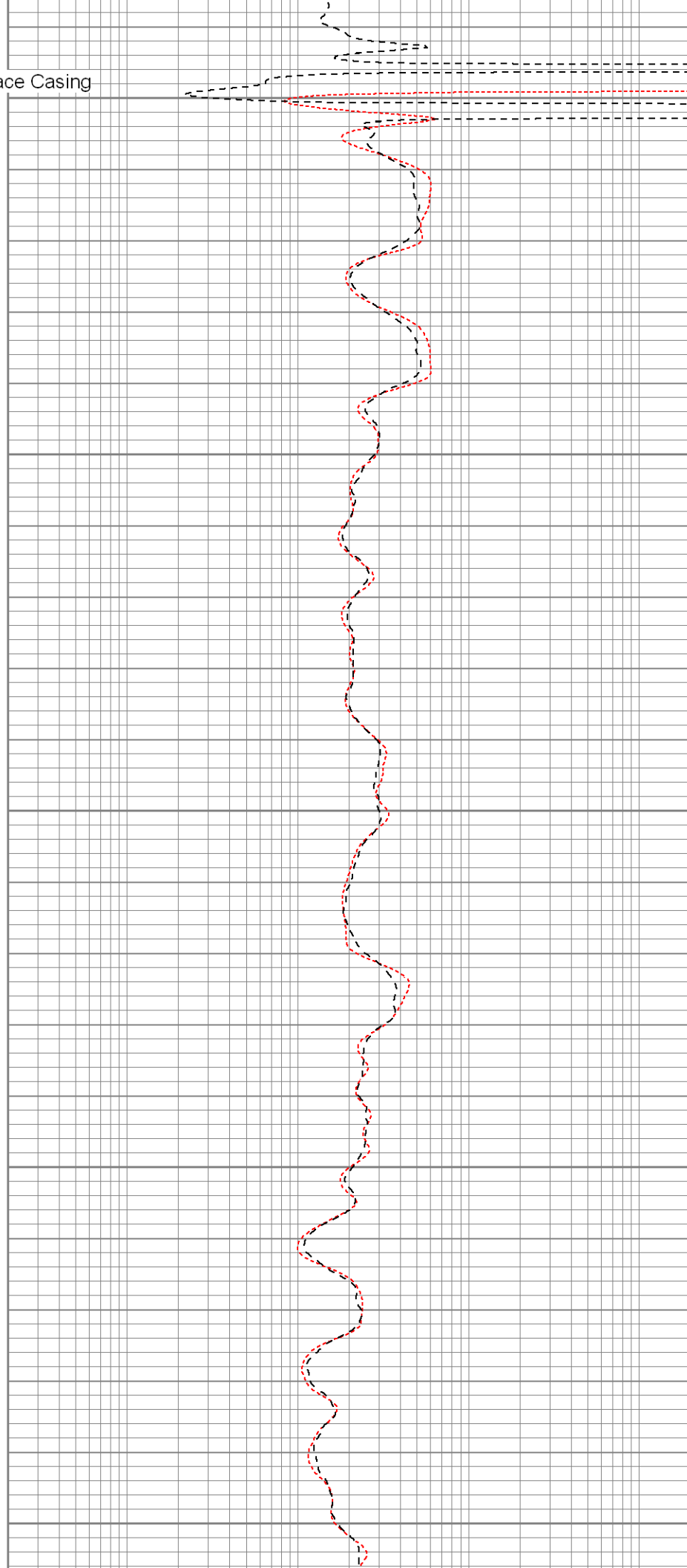
450

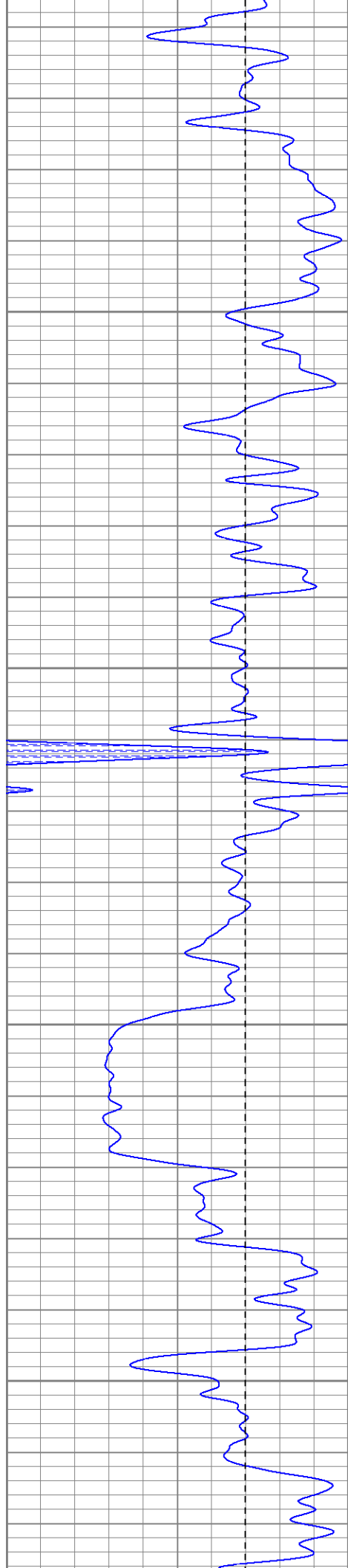
500

550

600

650



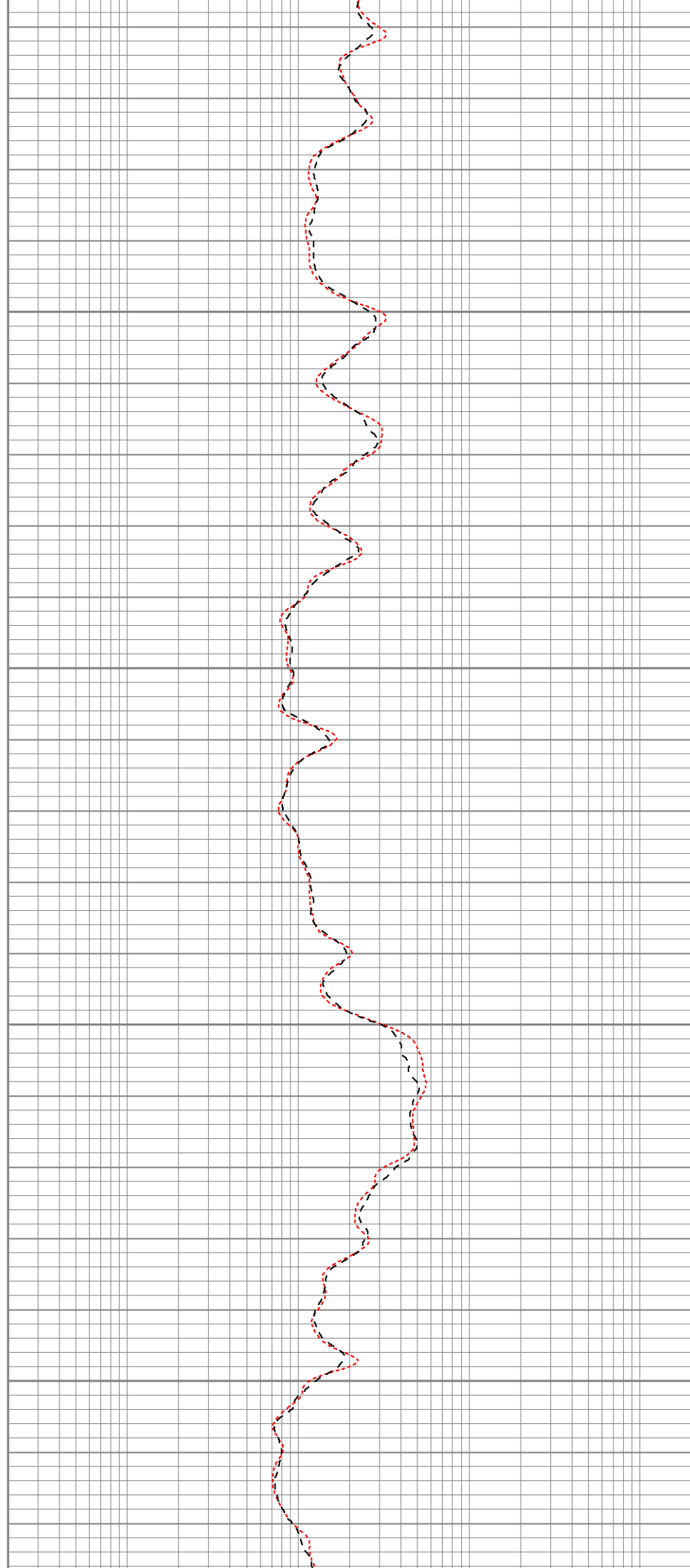


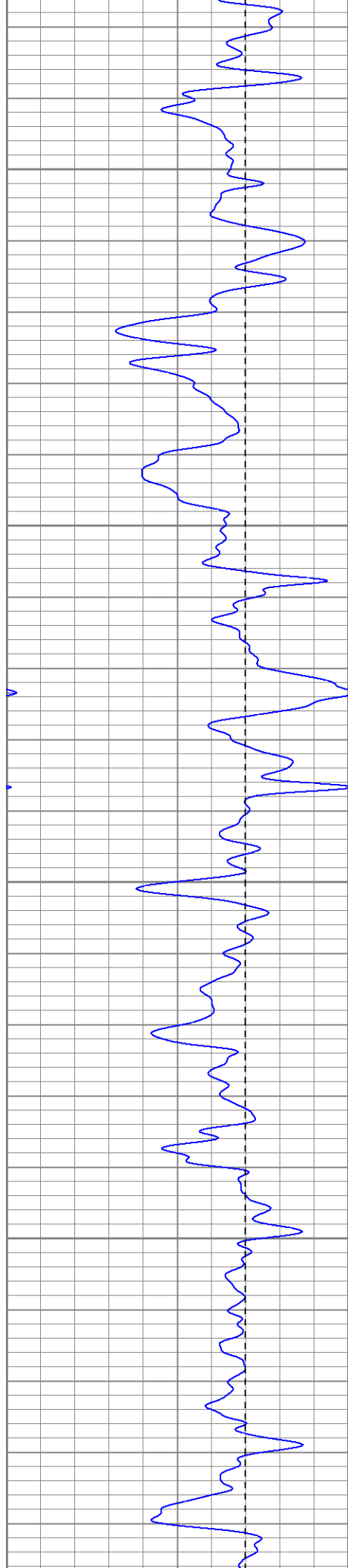
700

750

800

850



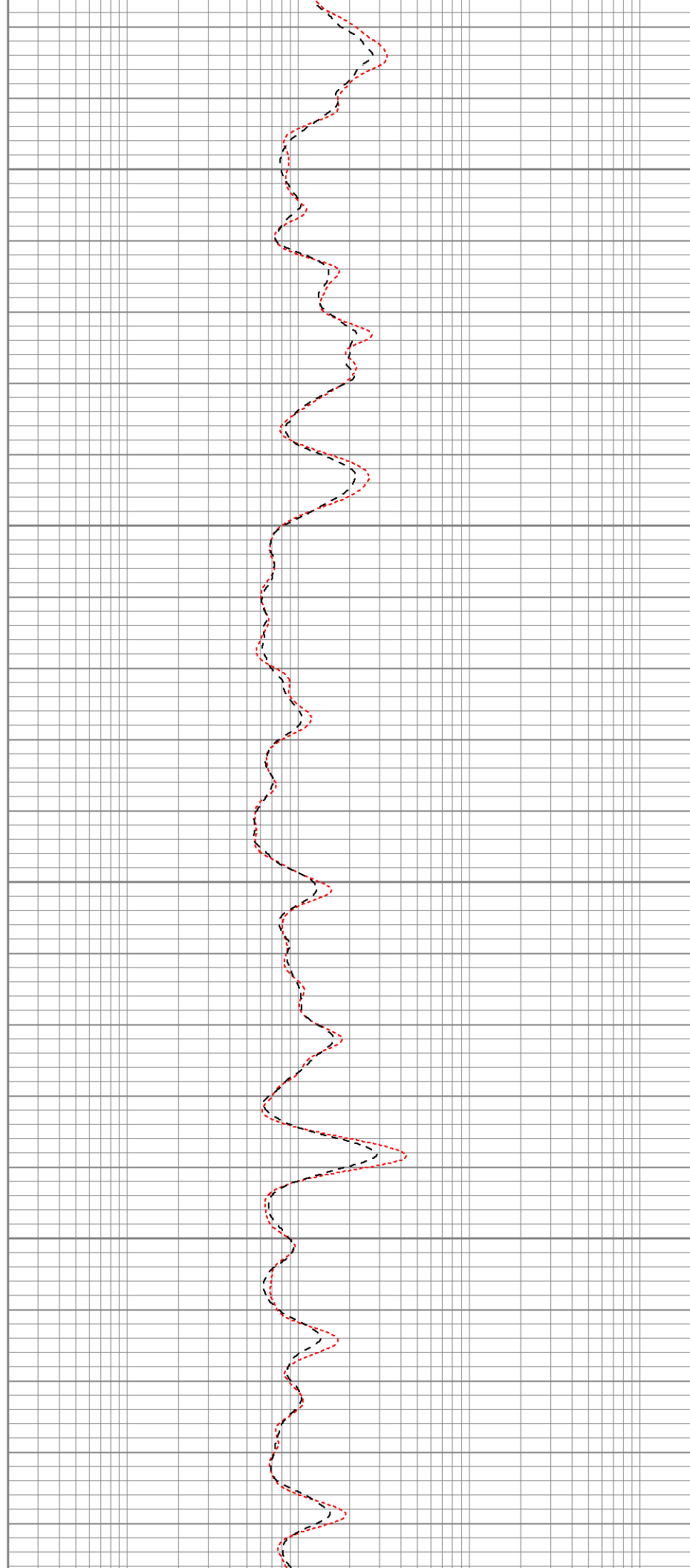


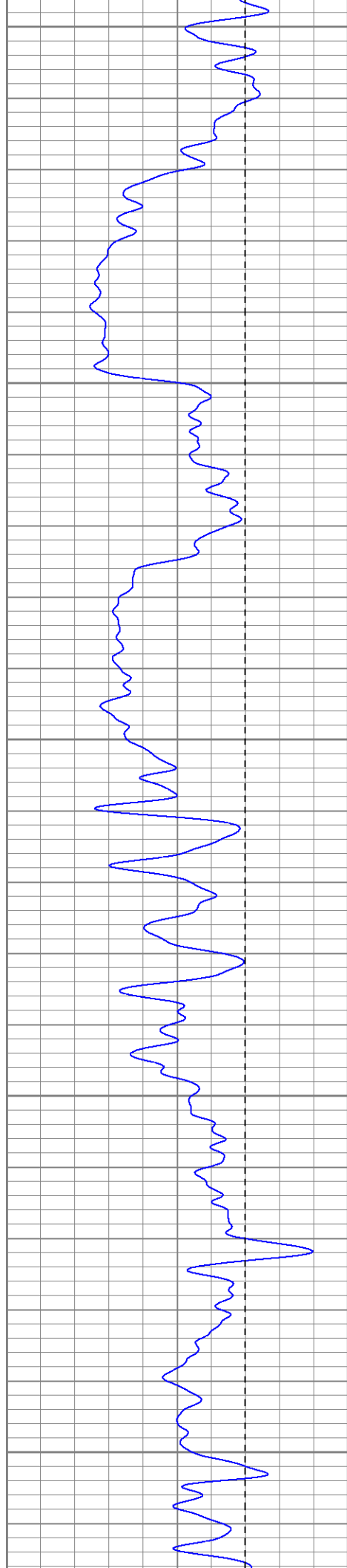
900

950

1000

1050





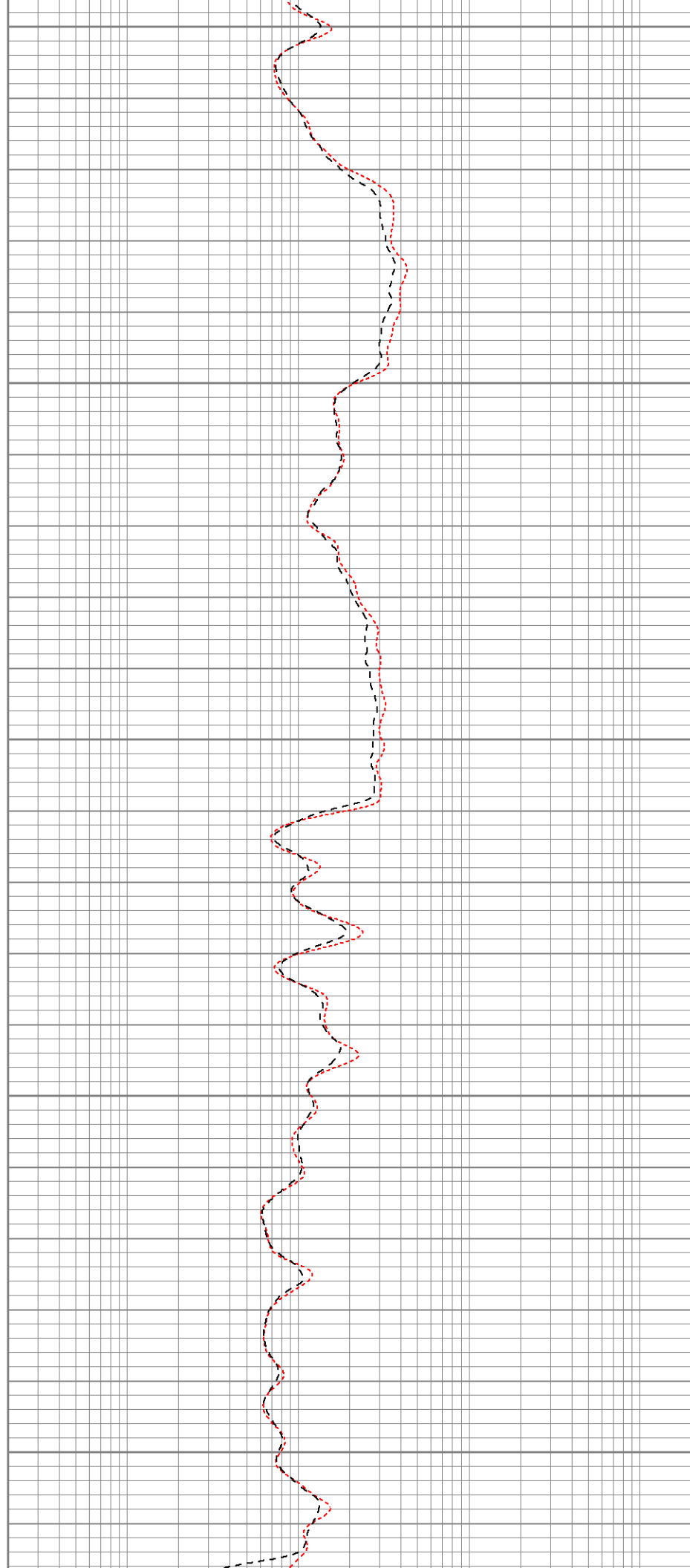
1100

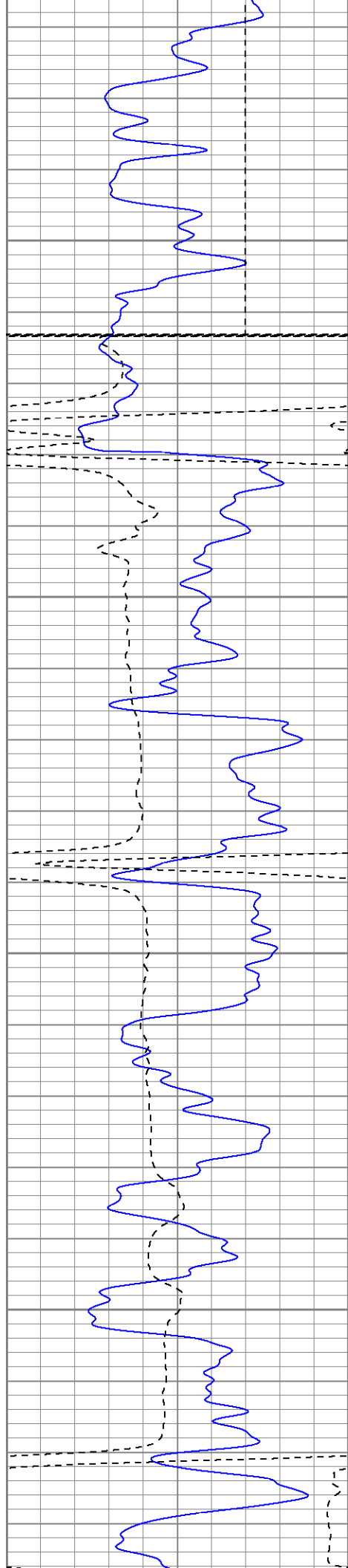
1150

1200

1250

1300





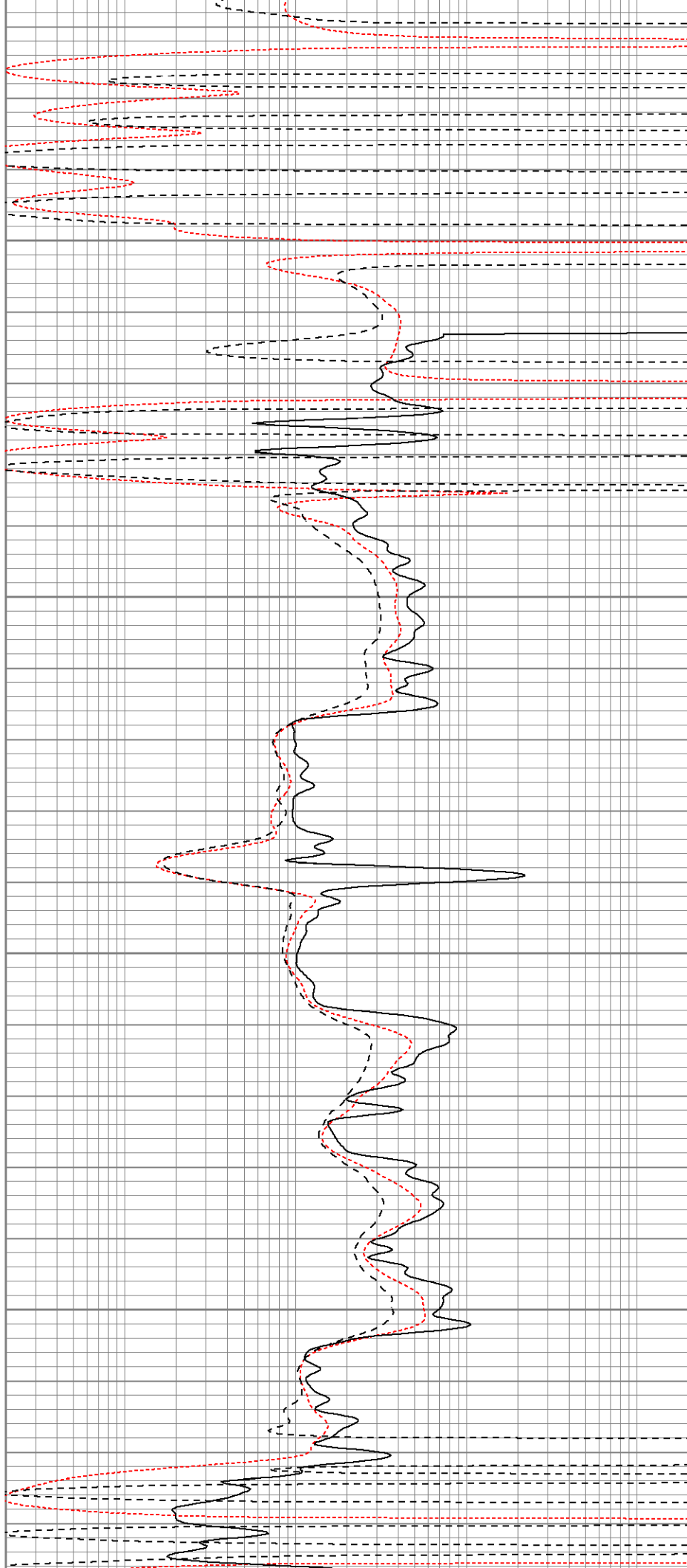
1350

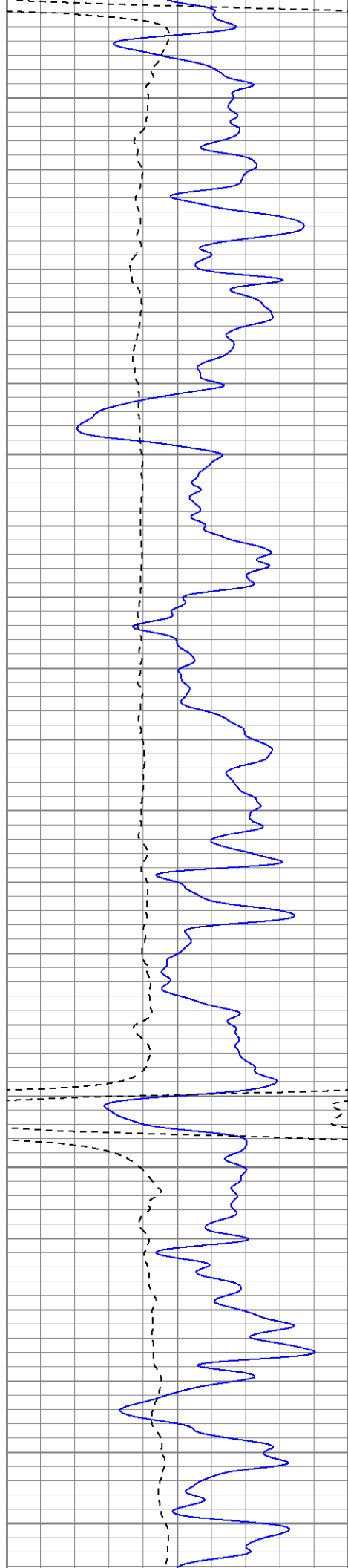
Fluid Level

1400

1450

1500





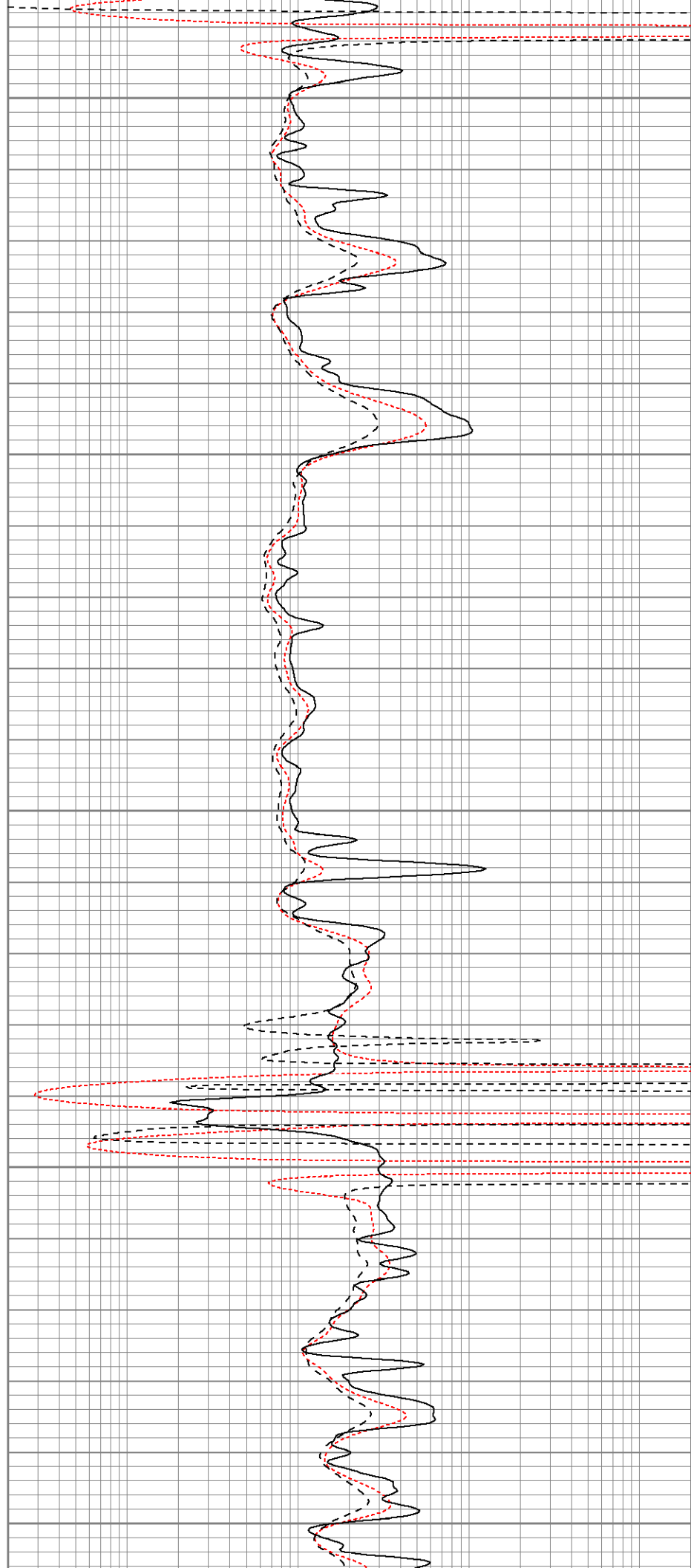
1550

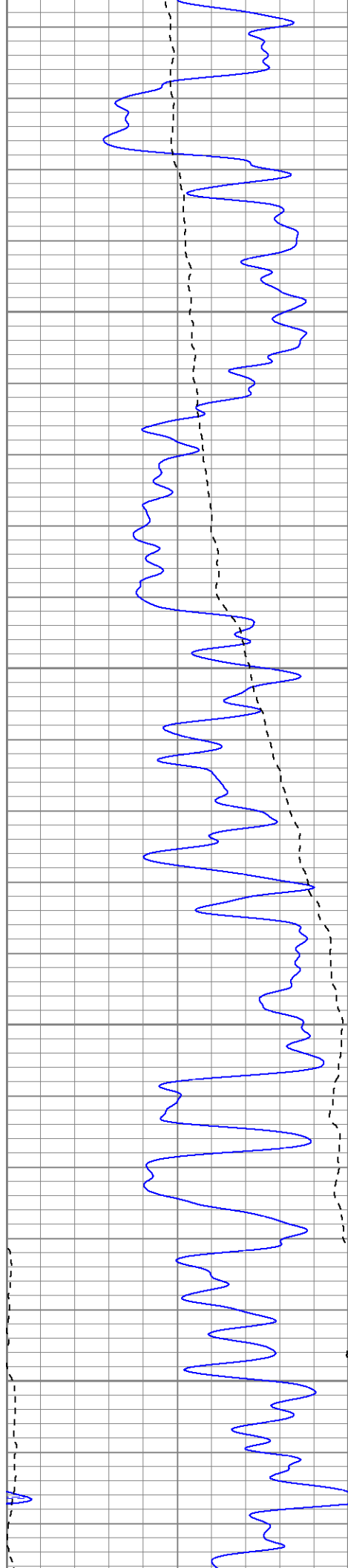
1600

1650

1700

1750



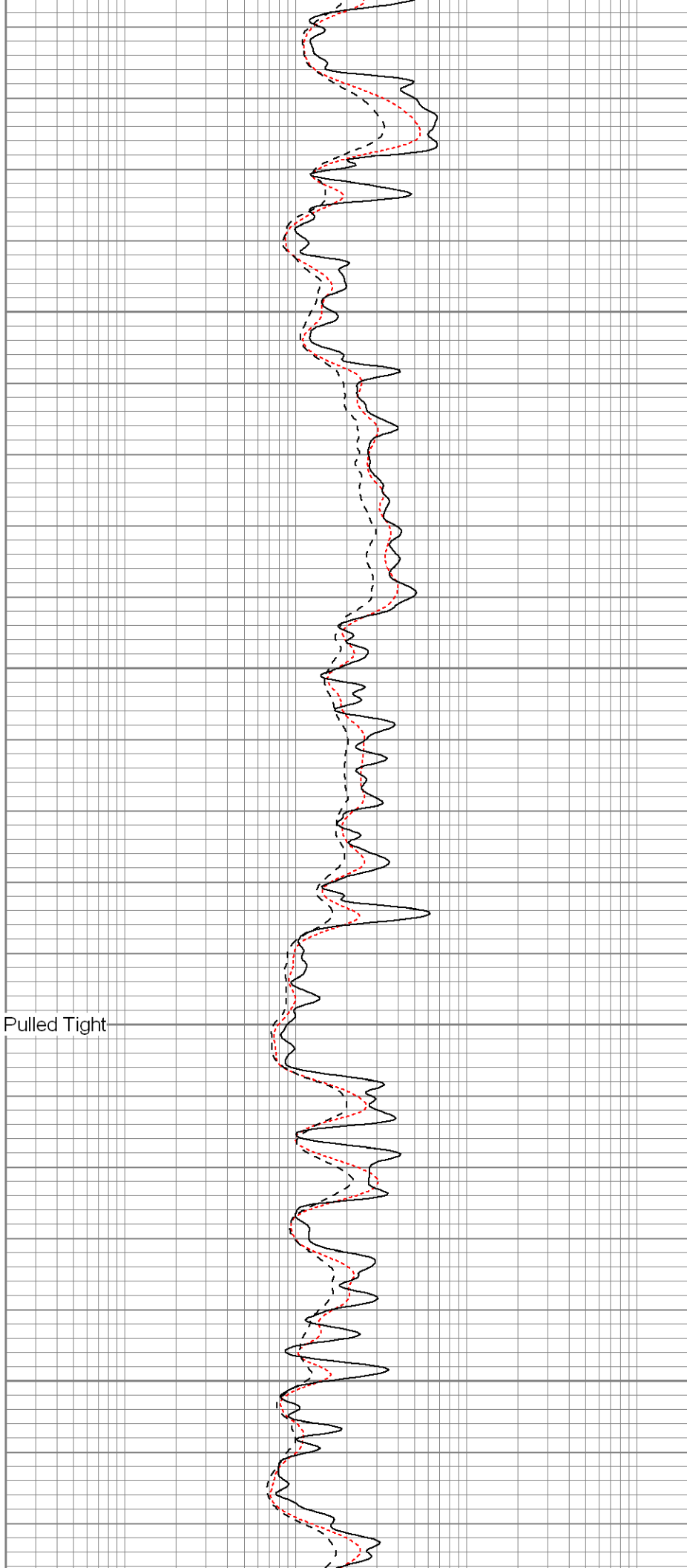


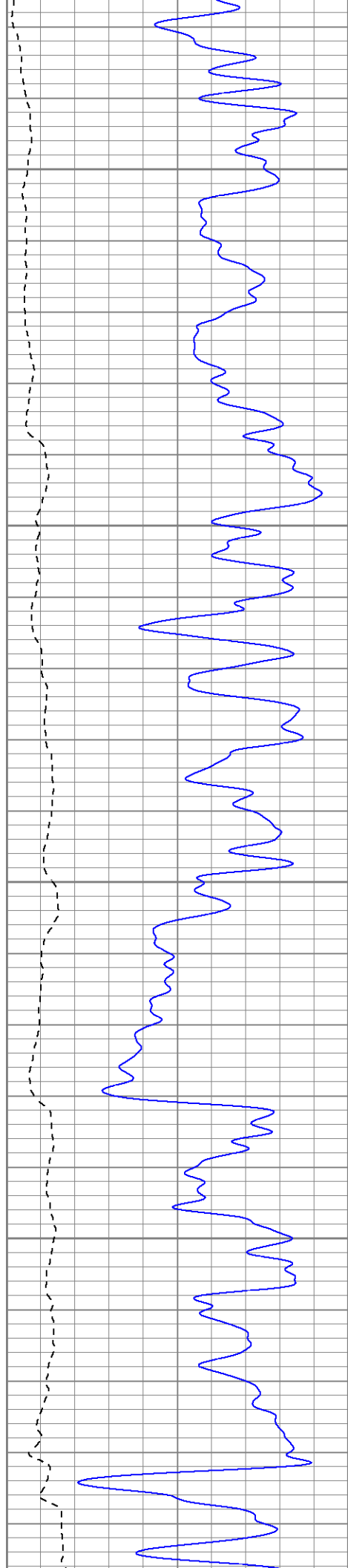
1800

1850

1900 Tool Pulled Tight

1950



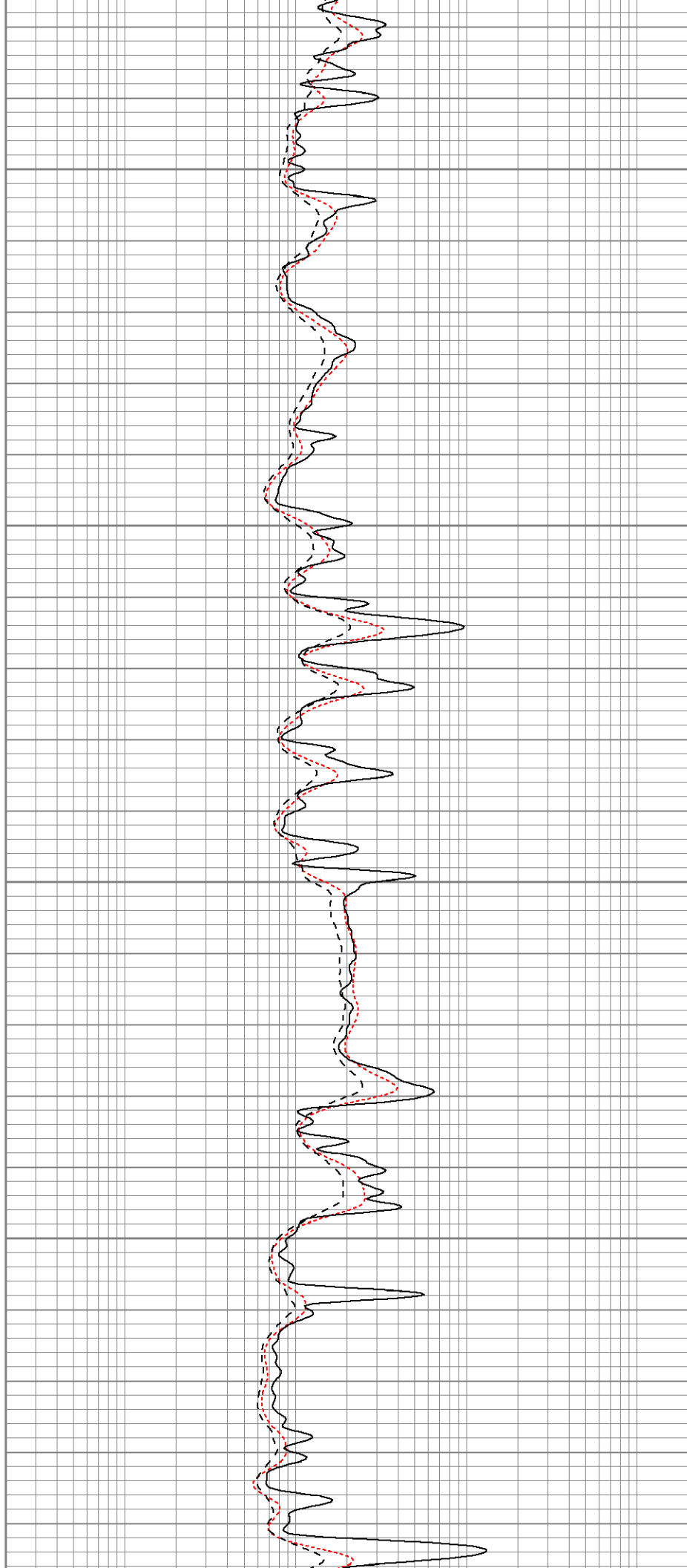


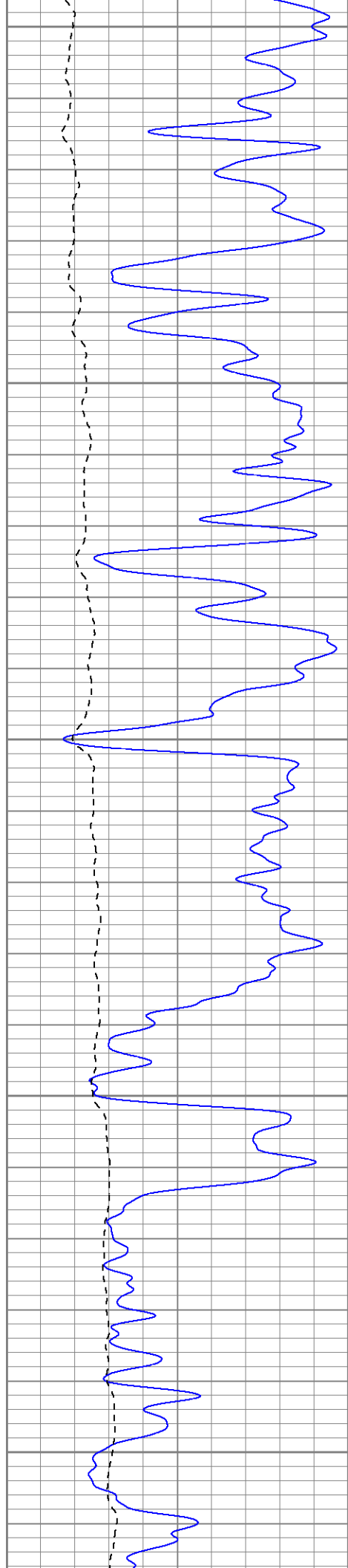
2000

2050

2100

2150





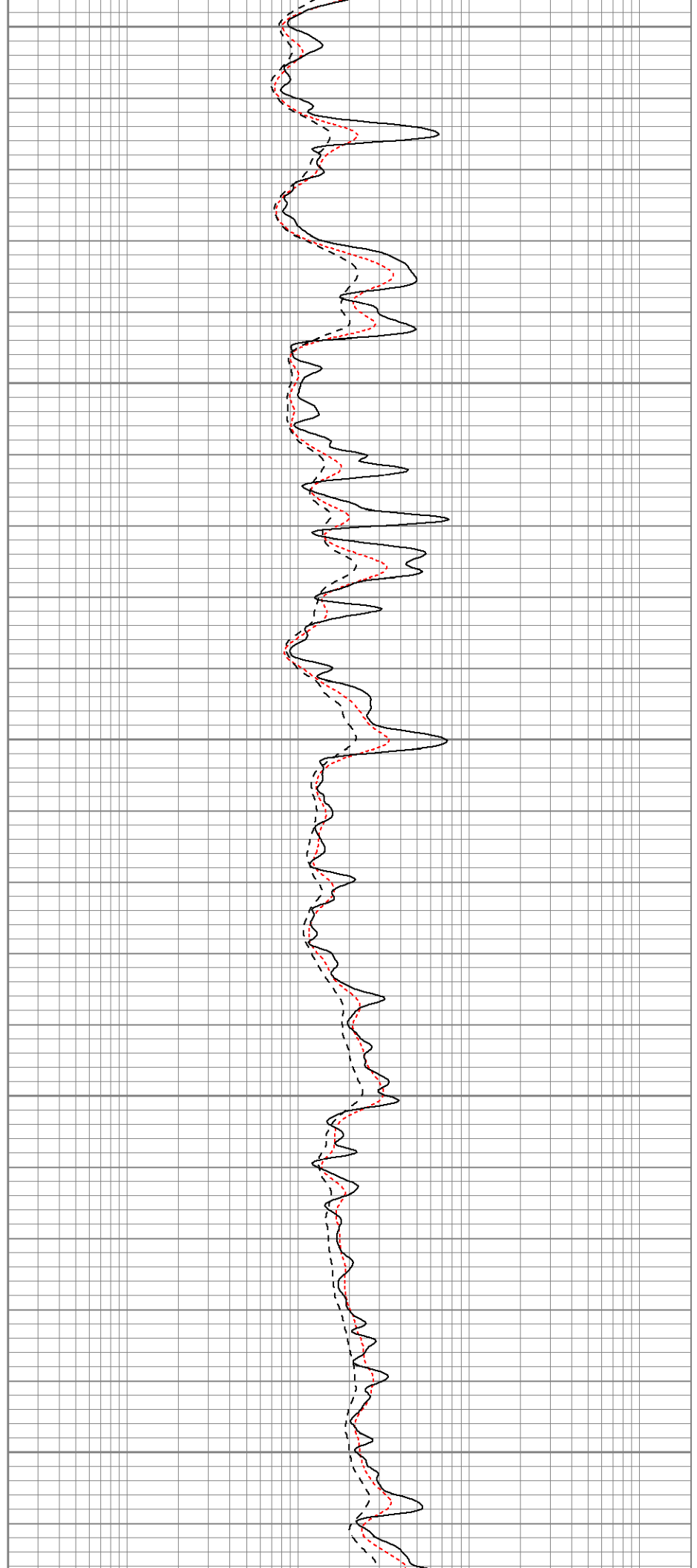
2200

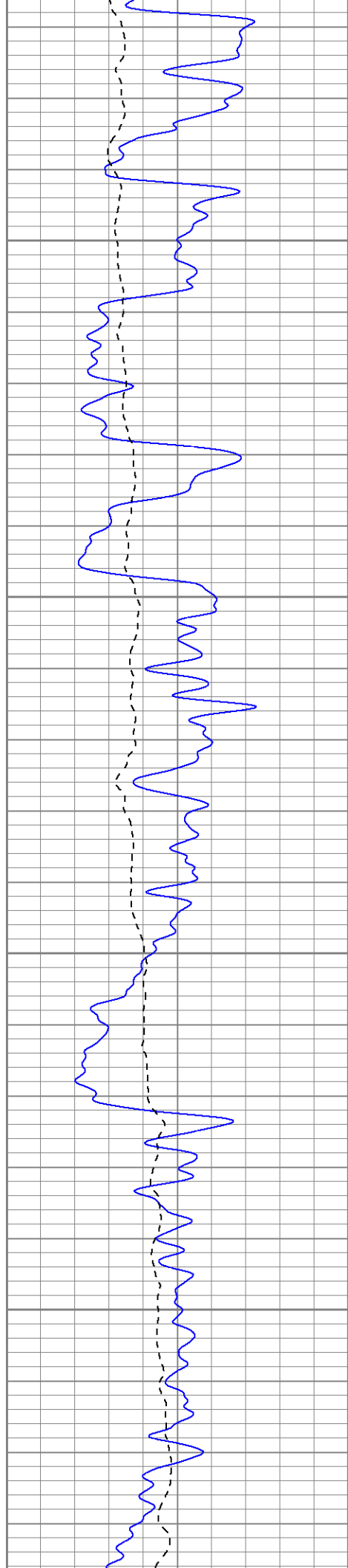
2250

2300

2350

2400



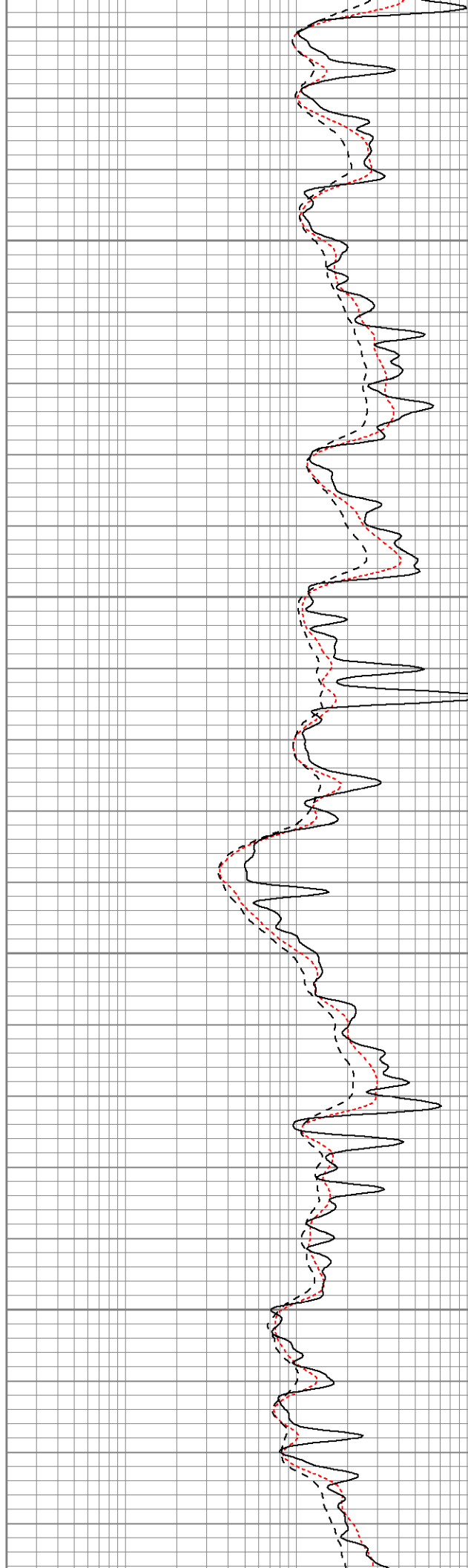


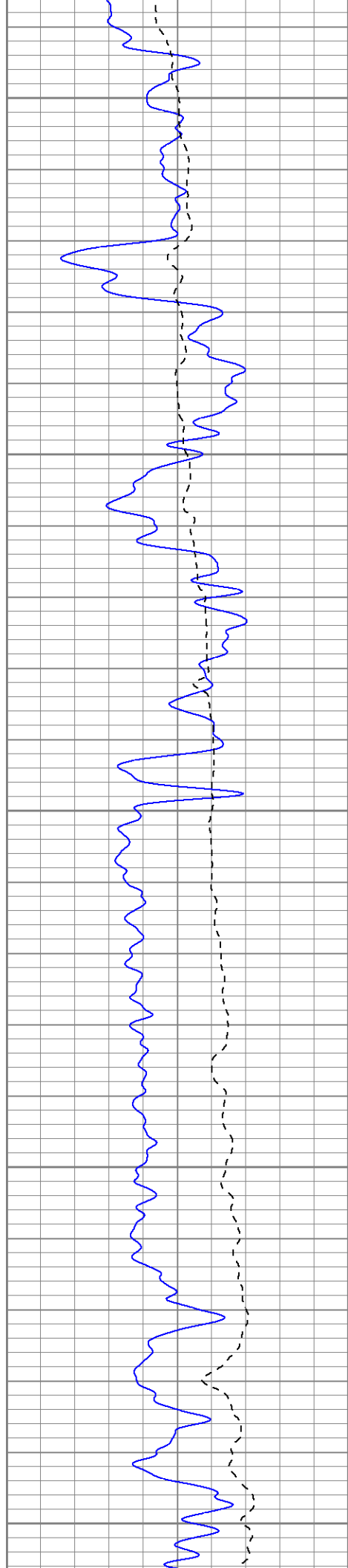
2450

2500

2550

2600





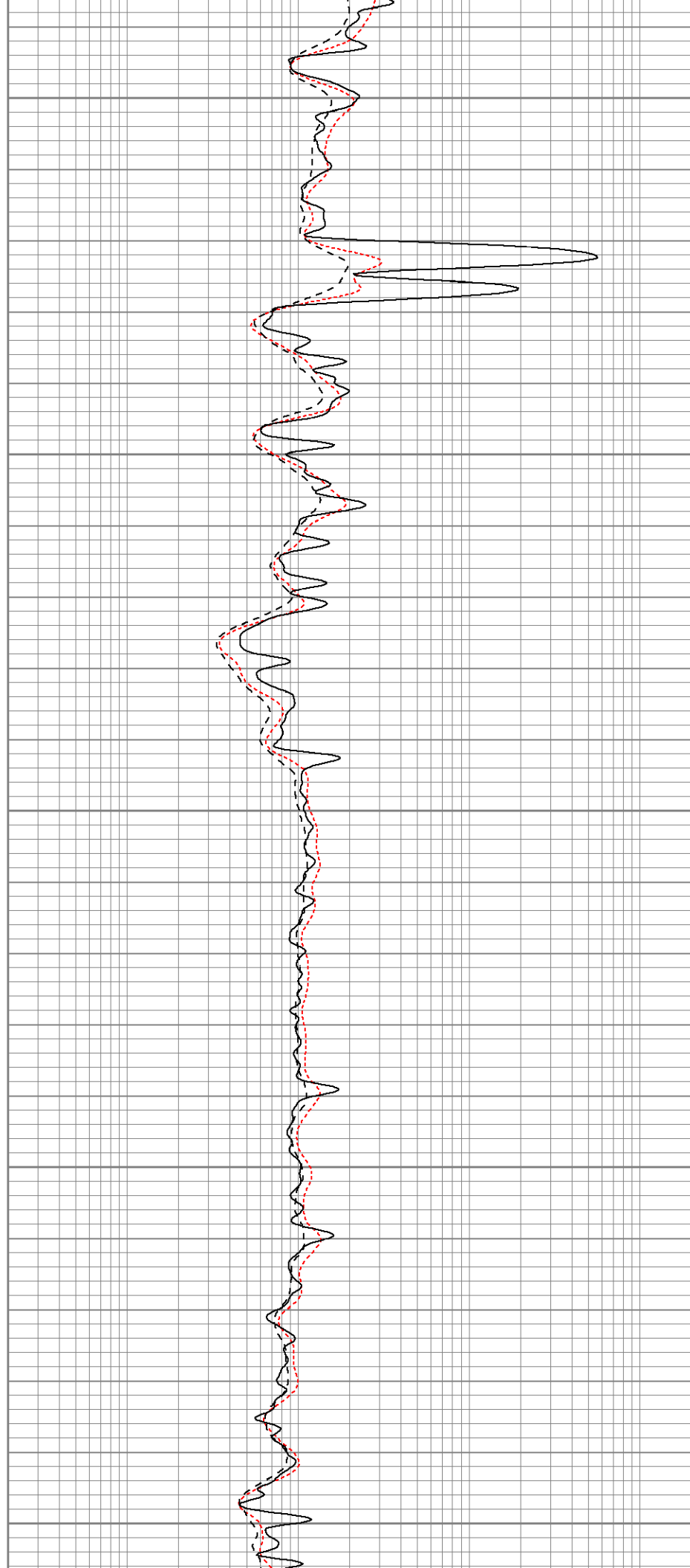
2650

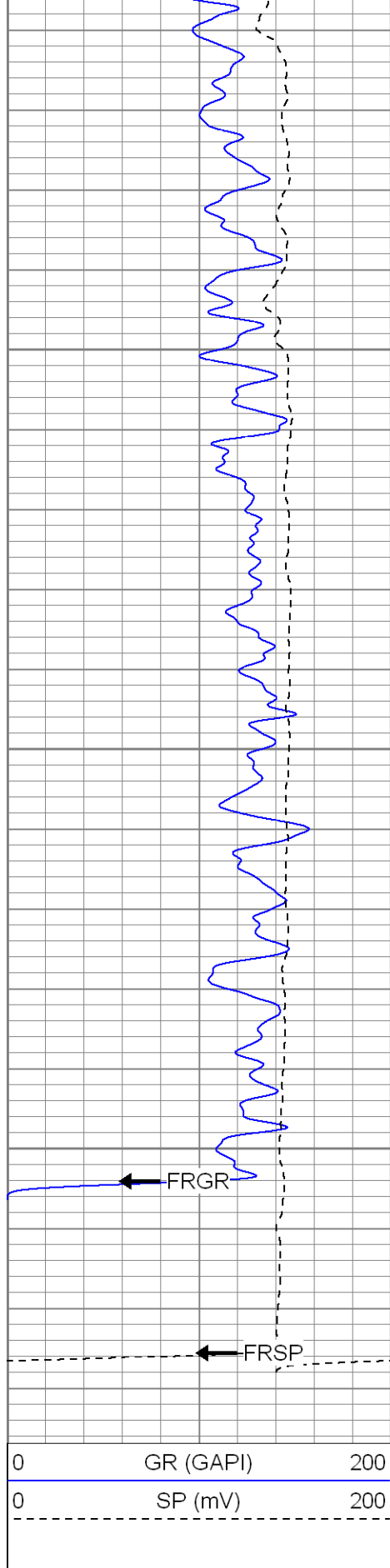
2700

2750

2800

2850

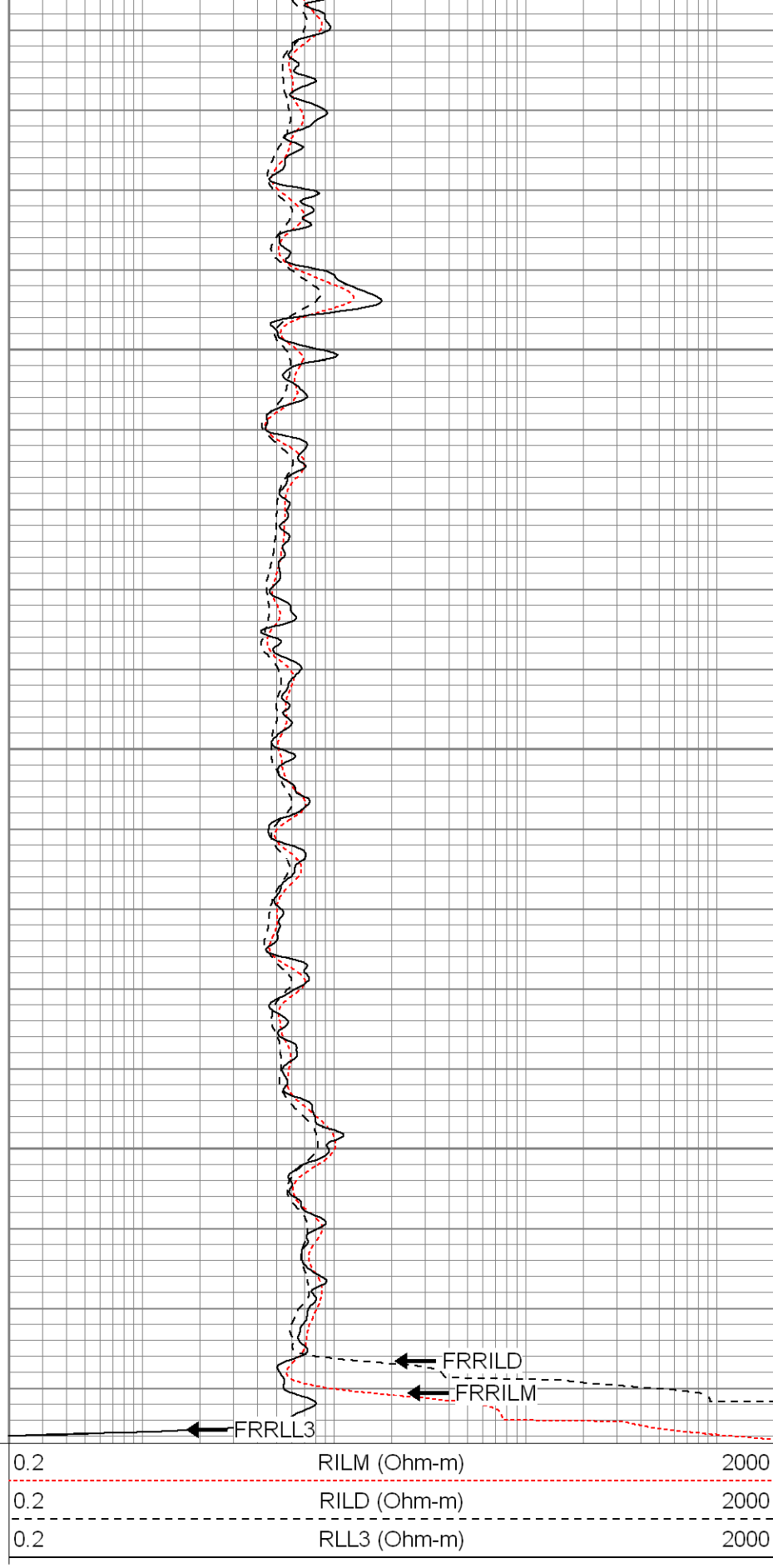




2900

2950

3000



SUPERIOR

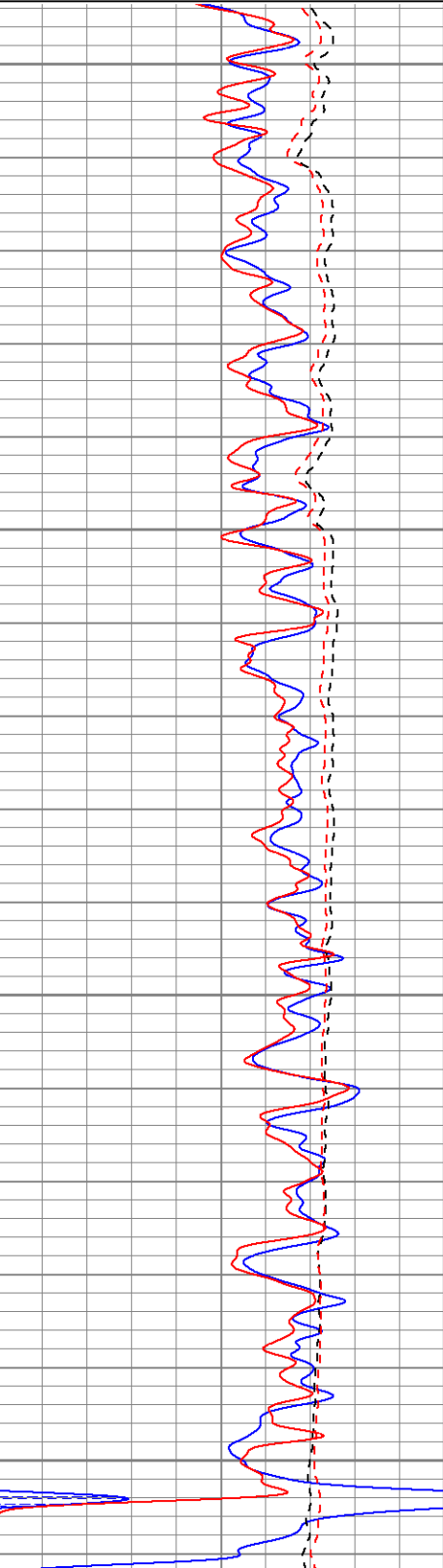
Black Lick, Pa.
Mercer, Pa.
Wooster, Oh.
Cleveland, Ok.
Trinidad, Co.

Repeat Section

Database File: xtohr0604.db
Dataset Pathname: pass1.1
Presentation Format: dil
Dataset Creation: Tue Mar 17 21:17:16 2009 by Calc Open-Cased 071220
Charted by: Depth in Feet scaled 1:240

0	GR (GAPI)	200
0	SP (mV)	200
0	GR-repeat (GAPI)	200
0	SP-repeat (mV)	200

0.2	RILM (Ohm-m)	2000
0.2	RILD (Ohm-m)	2000
0.2	RLL3 (Ohm-m)	2000
0.2	RLL3-repeat (Ohm-m)	2000
0.2	RILM-repeat (Ohm-m)	2000
0.2	RILD-repeat (Ohm-m)	2000

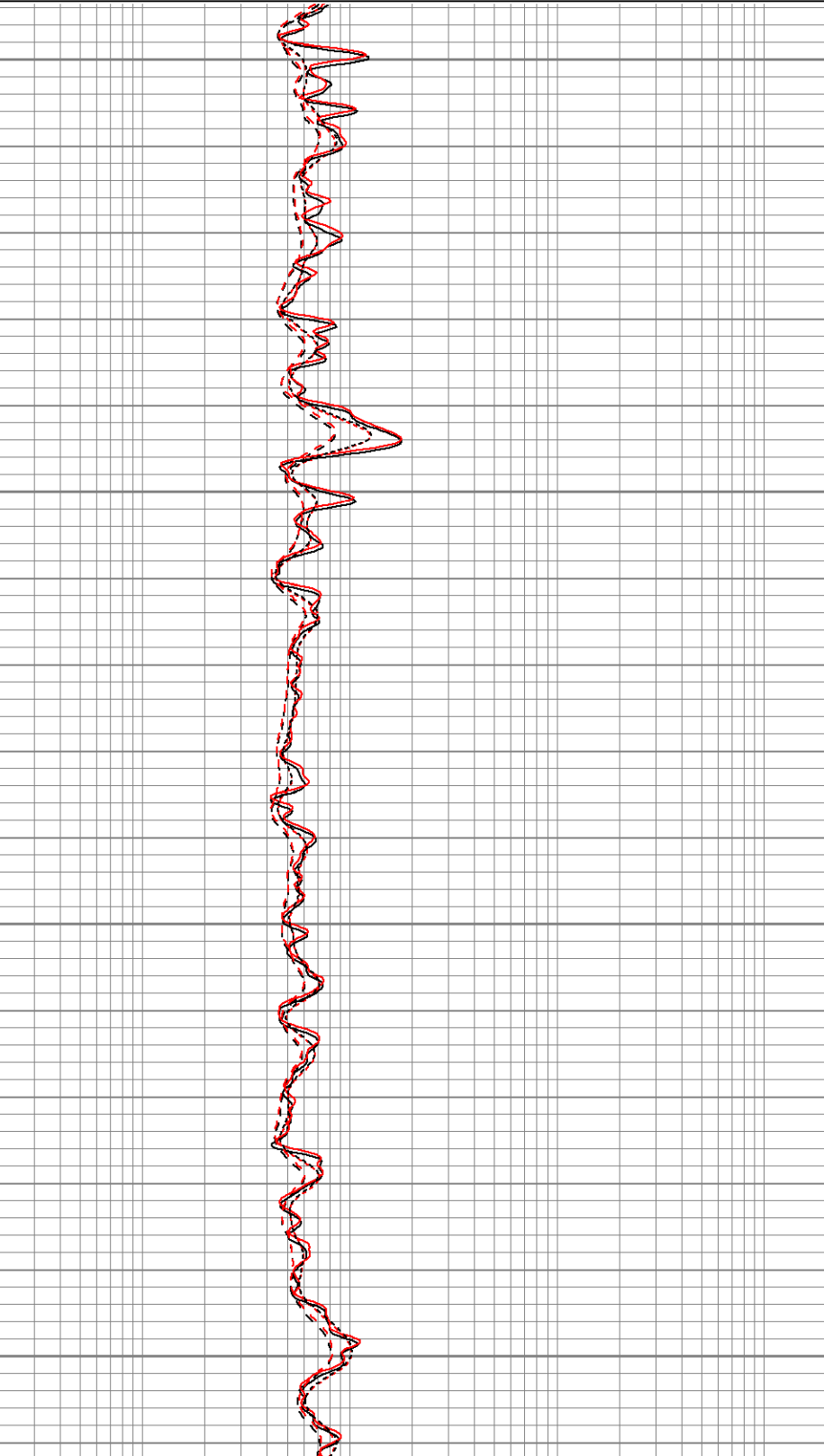


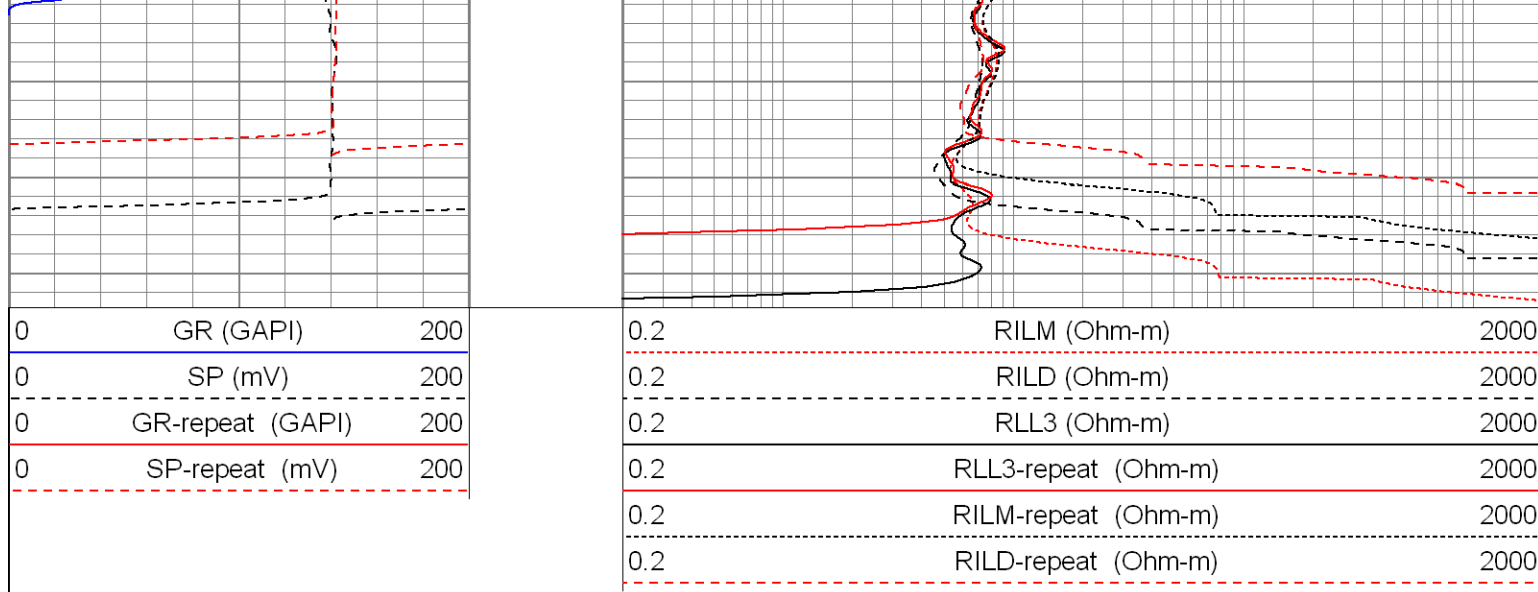
2850

2900

2950

3000





Calibration Report

Database File: xtohr0604.db
 Dataset Pathname: pass1
 Dataset Creation: Tue Mar 17 20:45:32 2009 by Log Open-Cased 071220

Dual Induction Calibration Report

Serial-Model: 5375-G
 Surface Cal Performed: Tue Mar 03 12:05:55 2009
 Downhole Cal Performed: Thu Mar 12 12:06:12 2009

Surface Calibration

Loop:	Readings			References			Results	
	Air	Loop		Air	Loop		m	b
Deep	0.002	0.621	V	0.000	500.000	mmho-m	807.905	-1.800
Medium	0.003	0.743	V	0.000	600.000	mmho-m	811.317	-2.798
Internal:	Zero	Cal		Zero	Cal		m	b
Deep	0.002	0.621	V	0.000	500.000	mmho-m	807.937	-1.938
Medium	0.004	0.743	V	0.000	550.000	mmho-m	744.131	-2.816

Downhole Calibration

Internal:	Readings			References			Results	
	Zero	Cal		Zero	Cal		m	b
Deep	-1.465	497.071	mmho-m	0.138	500.118	mmho-m	1.003	1.607
Medium	-0.231	548.134	mmho-m	0.250	549.936	mmho-m	1.002	0.482
Shallow	2.505	0.008	V	500.000	2.000	Ohm-m	130.000	0.000

Compensated Density Calibration Report





Serial-Model: 2501DHT-DHT
 Source / Verifier: /
 Master Calibration Performed: Tue Mar 03 14:30:18 2009

Master Calibration

	Density		Far Detector	Near Detector	
Magnesium	1.710	g/cc	767.26	303.43	cps

Aluminum	2.590	g/cc	171.91	210.81	cps
Spine Angle = 76.32			Density/Spine Ratio = 0.572		
	Size		Reading		
Small Ring	8.00	in	6217.62		
Large Ring	14.00	in	10357.00		

Gamma Ray Calibration Report		
Serial Number:	2001	
Tool Model:	OH	
Performed:	Thu Feb 26 13:18:39 2009	
Calibrator Value:	1.0	GAPI
Background Reading:	0.0	cps
Calibrator Reading:	1.0	cps
Sensitivity:	0.2500	GAPI/cps
Neutron Calibration Report		
Serial Number:	5108	
Tool Model:	PROBE	
Performed:	Thu Feb 26 13:38:03 2009	
Calibrator Value:	1	NAPI
Calibrator Reading:	1	cps
Sensitivity:	1	NAPI/cps

Sensor	Offset (ft)	Schematic	Description	Len (ft)	OD (in)	Wt (lb)	
NEU	37.85		None	0.75	1.50	5.00	
			NEU-PROBE (5108) Probe Epithermal	4.92	3.63	85.00	
GR	32.32		GR-OH (2001) 2001	3.56	3.25	40.00	
			CDL-DHT (2501DHT) Digital High Temp CDL Tool	9.69	4.00	201.00	
LSD	23.78						
DCAL	23.49						
SSD	23.24						
HEADVOLT	21.47						
CILD	10.60			DIL-G (5375) Gearhart	21.47	4.00	345.00
SP	10.60						
CILM	6.89						
RLL3	1.70						

Dataset:	xtohr0604.db: field/well/run1/pass1
Total Length:	40.39 ft
Total Weight:	676.00 lb
O.D.	4.00 in