



SUPERIOR
Black Lick, Pa.
Mercer, Pa.
Wooster, Oh.
Cleveland, Ok.
Trinidad, Co.

DUAL INDUCTION LOG

Company XTO Energy Inc.
Well Hill Ranch 01-02
Field Purgatoire River
County Las Animas State Colorado

Location: API # : 05 071 09560 00

820' FNL & 1919' FEL

SEC 01 TWP 35S RGE 68W

Permanent Datum Ground Level Elevation 8627'
Log Measured From Ground Level
Drilling Measured From Ground Level

Other Services
CDL
NEU
Elevation
K.B. -----
D.F. -----
G.L. 8627'

Date	3-12-09	3-13-09	
Run Number	One	Two	
Depth Driller	2637'	2637'	
Depth Logger	2014'	2284'	
Bottom Logged Interval	2012'	2282'	
Top Log Interval	Surface Casing	Surface Casing	
Casing Driller	8 5/8" @ 450'	8 5/8" @ 450'	
Casing Logger	452'	452'	
Bit Size	7 7/8"	7 7/8"	
Type Fluid in Hole	Water	Water	
Density / Viscosity	///	///	
pH / Fluid Loss	///	///	
Source of Sample	///	///	
Rm @ Meas. Temp	///	///	
Rmf @ Meas. Temp	///	///	
Rmc @ Meas. Temp	///	///	
Source of Rmf / Rmc	///	///	
Rm @ BHT	///	///	
Time Circulation Stopped	9:00 A.M.	9:00 A.M./ 3-12-09	
Time Logger on Bottom	12:00 P.M.	9:30 A.M./3-13-09	
Maximum Recorded Temperature	90 DEG F	96 DEG F	
Equipment Number	T697	T697	
Location	Trinidad	Trinidad	
Recorded By	J. Cappellucci	J. Cappellucci	
Witnessed By	Mr. Dalton King	Mr. Dalton King	

<<< Fold Here >>>

All interpretations are opinions based on inferences from electrical or other measurements and we cannot and do not guarantee the accuracy or correctness of any interpretation, and we shall not, except in the case of gross or willful negligence on our part, be liable or responsible for any loss, costs, damages, or expenses incurred or sustained by anyone resulting from any interpretation made by any of our officers, agents or employees. These interpretations are also subject to our general terms and conditions set out in our current Price Schedule.

Comments

Multiple Passes Ran
Merged all Data

Well Directions:

Lorencito, take door # 6 to top of hill, stay on main road past trash dumpster, stay straight, at Y stay left, stay on main road, at beige tank stay right, at big rocks take left, end on third location on right.



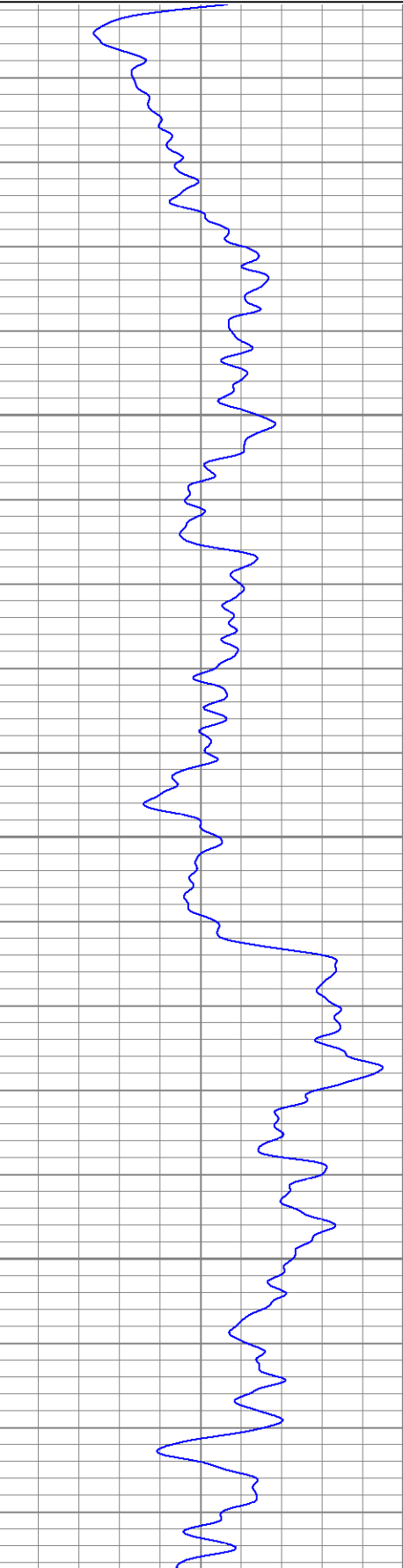
SUPERIOR
Black Lick, Pa.
Mercer, Pa.
Wooster, Oh.
Cleveland, Ok.
Trinidad, Co.

Main Merged Pass

Database File: xtohr0102.db
Dataset Pathname: pass2.3
Presentation Format: dil
Dataset Creation: Fri Mar 13 10:55:56 2009
Charted by: Depth in Feet scaled 1:240

0	GR (GAPI)	200
0	SP (mV)	200

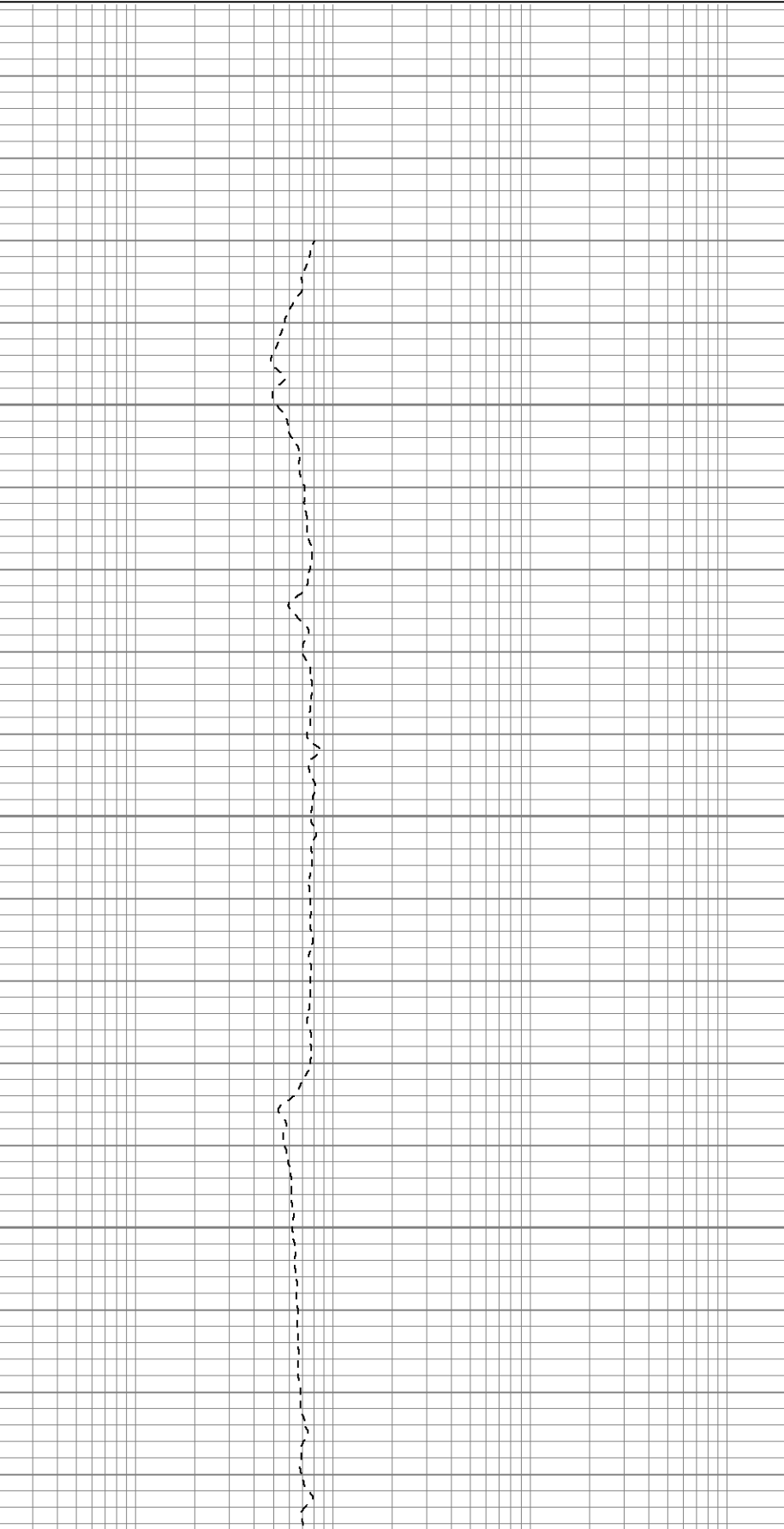
0.2	RILM (Ohm-m)	2000
0.2	RILD (Ohm-m)	2000
0.2	RLL3 (Ohm-m)	2000

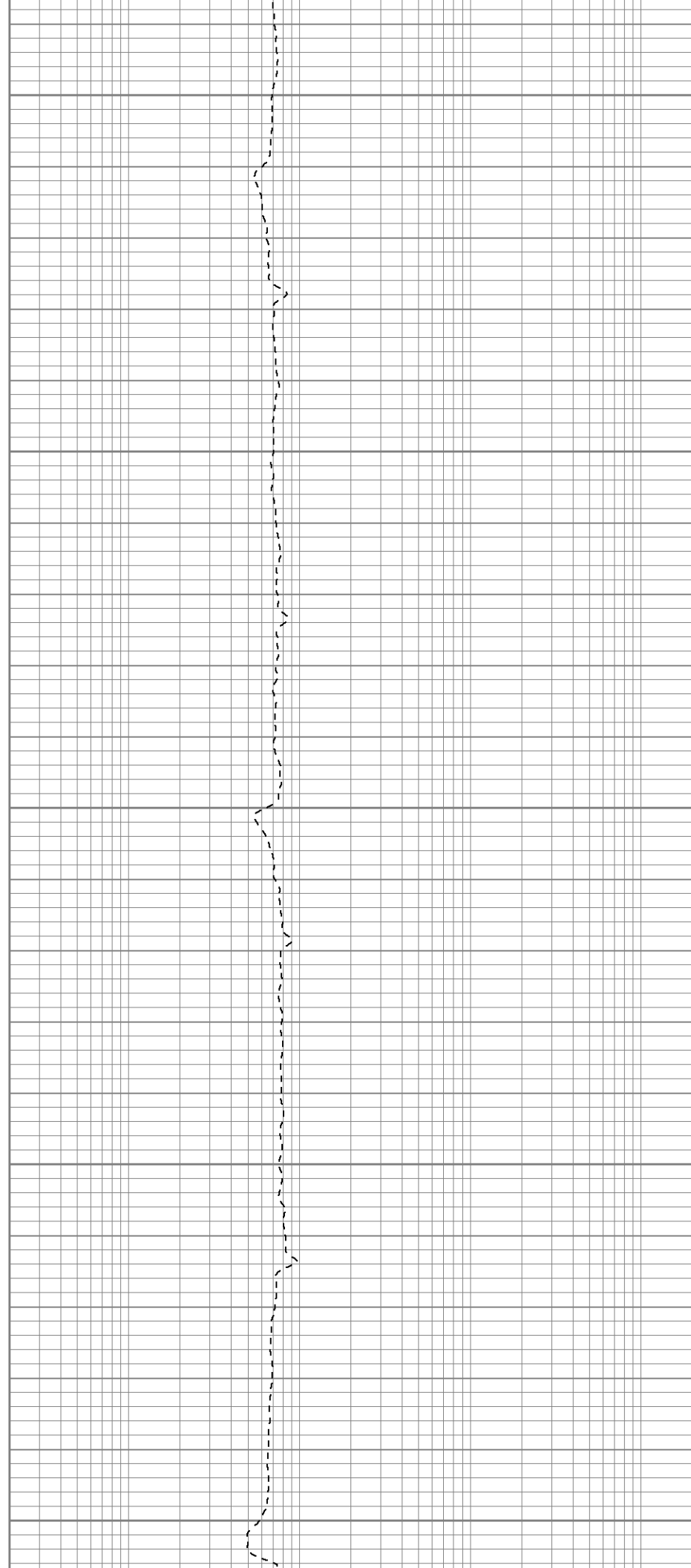
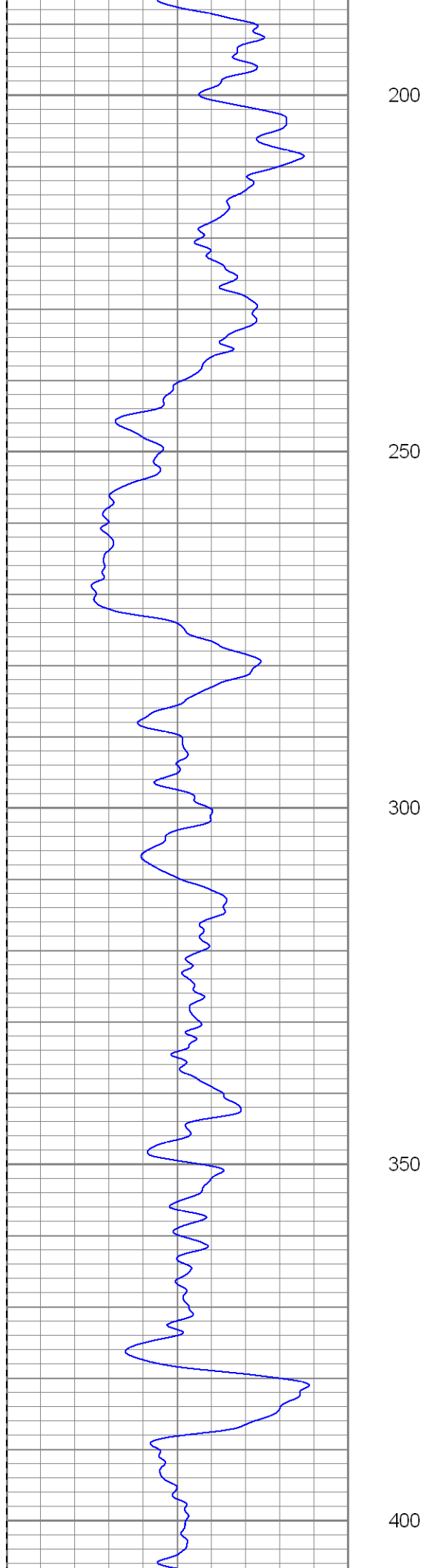


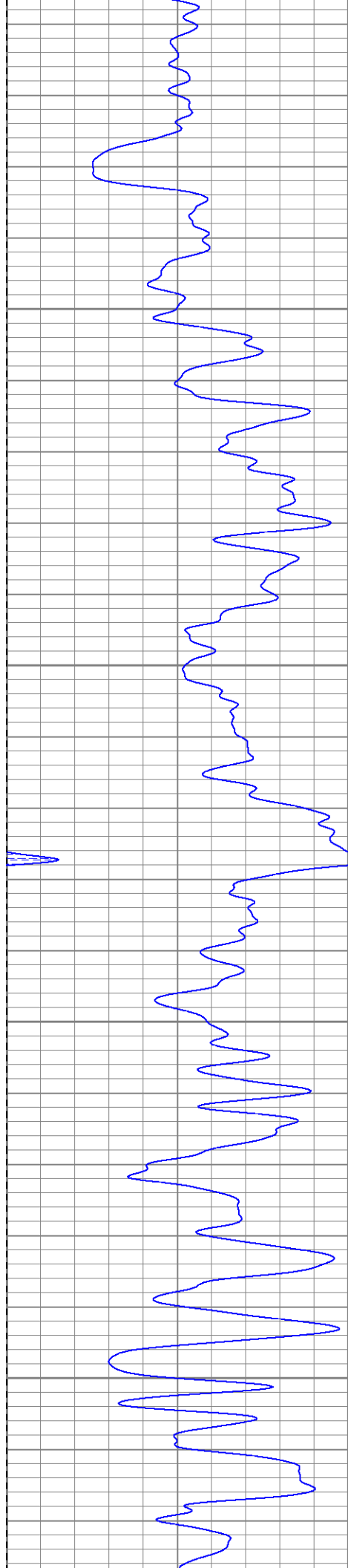
50

100

150







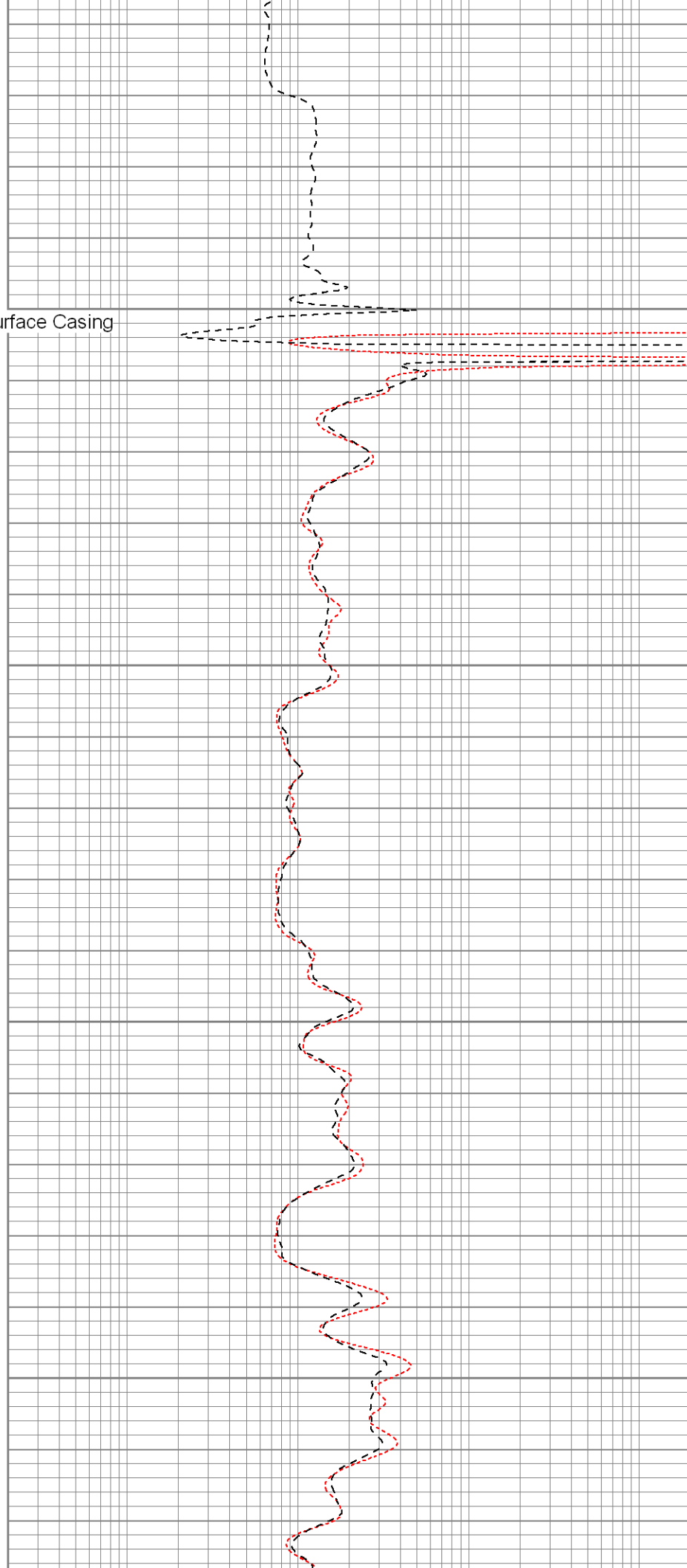
450

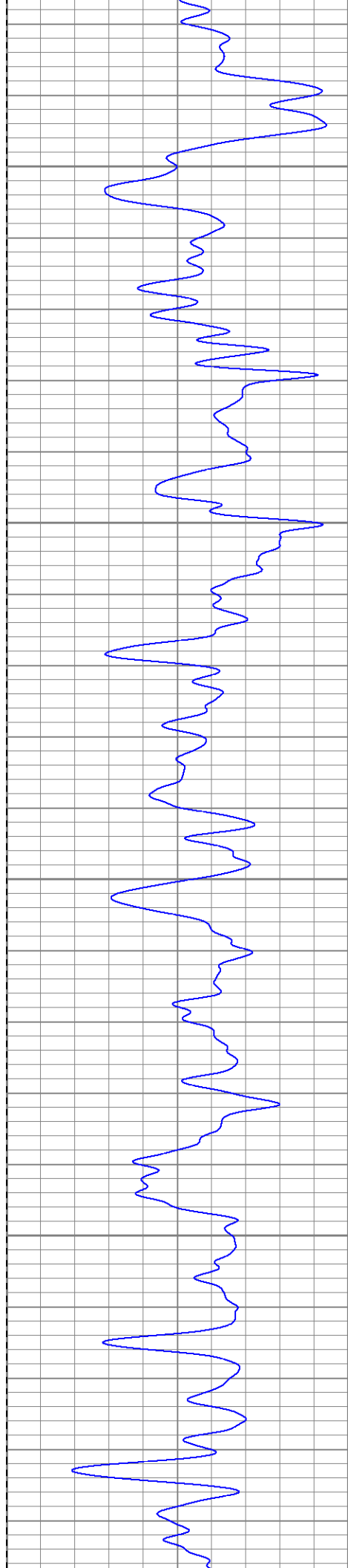
Surface Casing

500

550

600



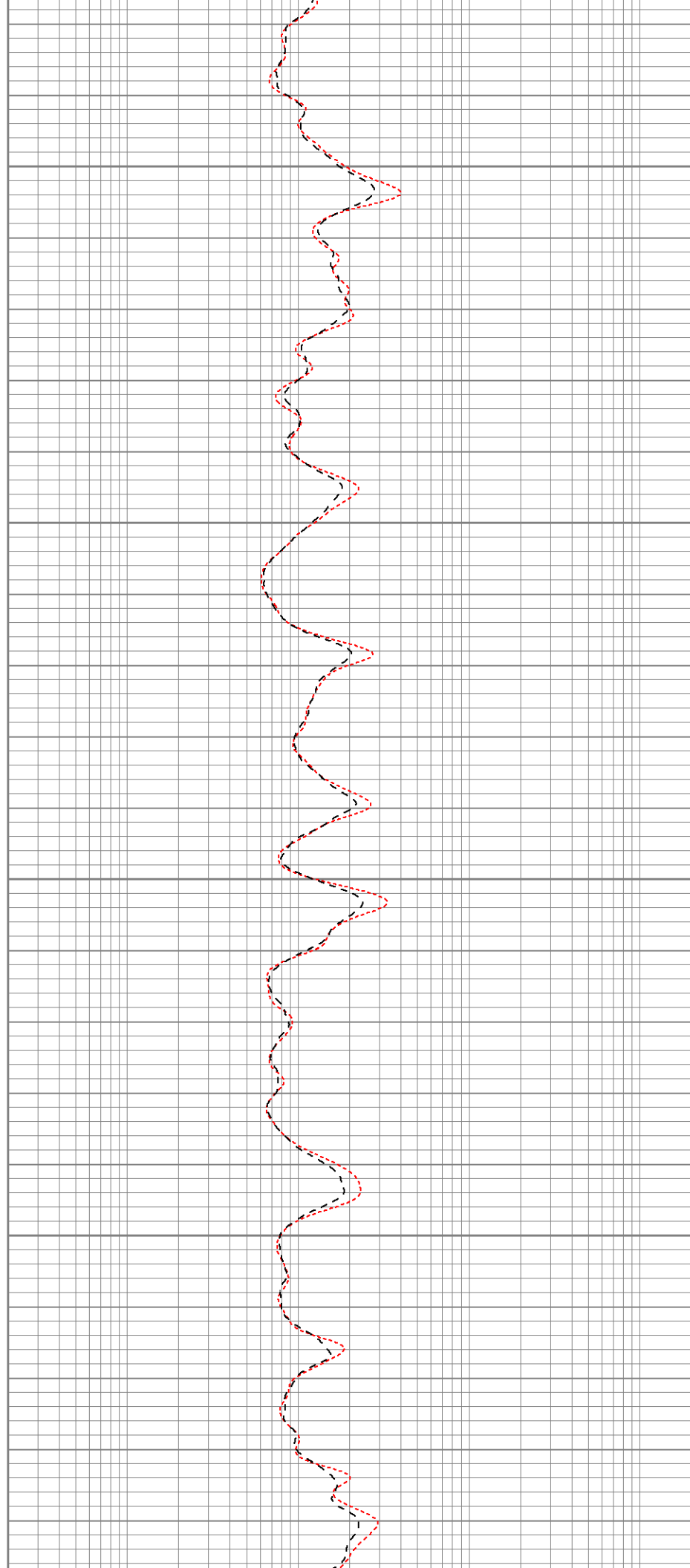


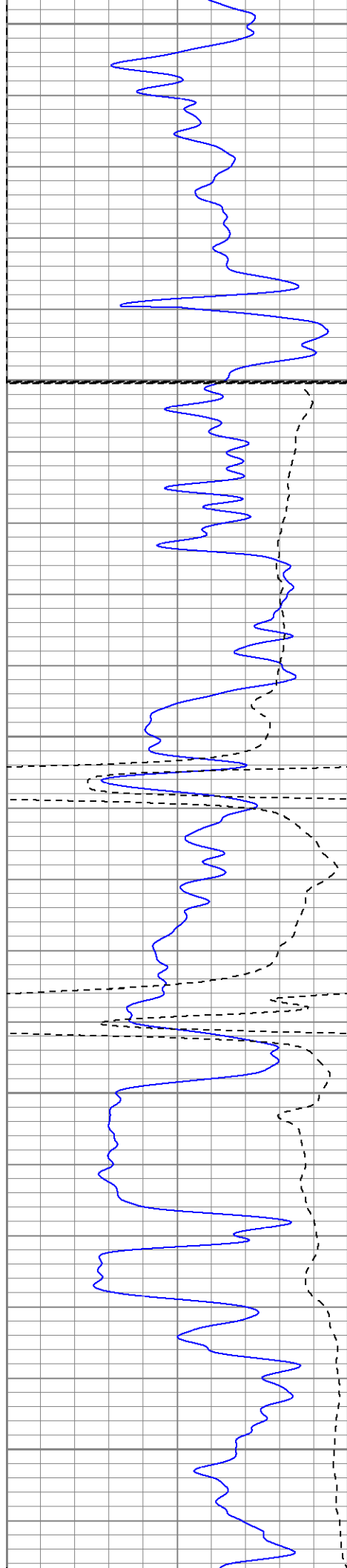
650

700

750

800





850

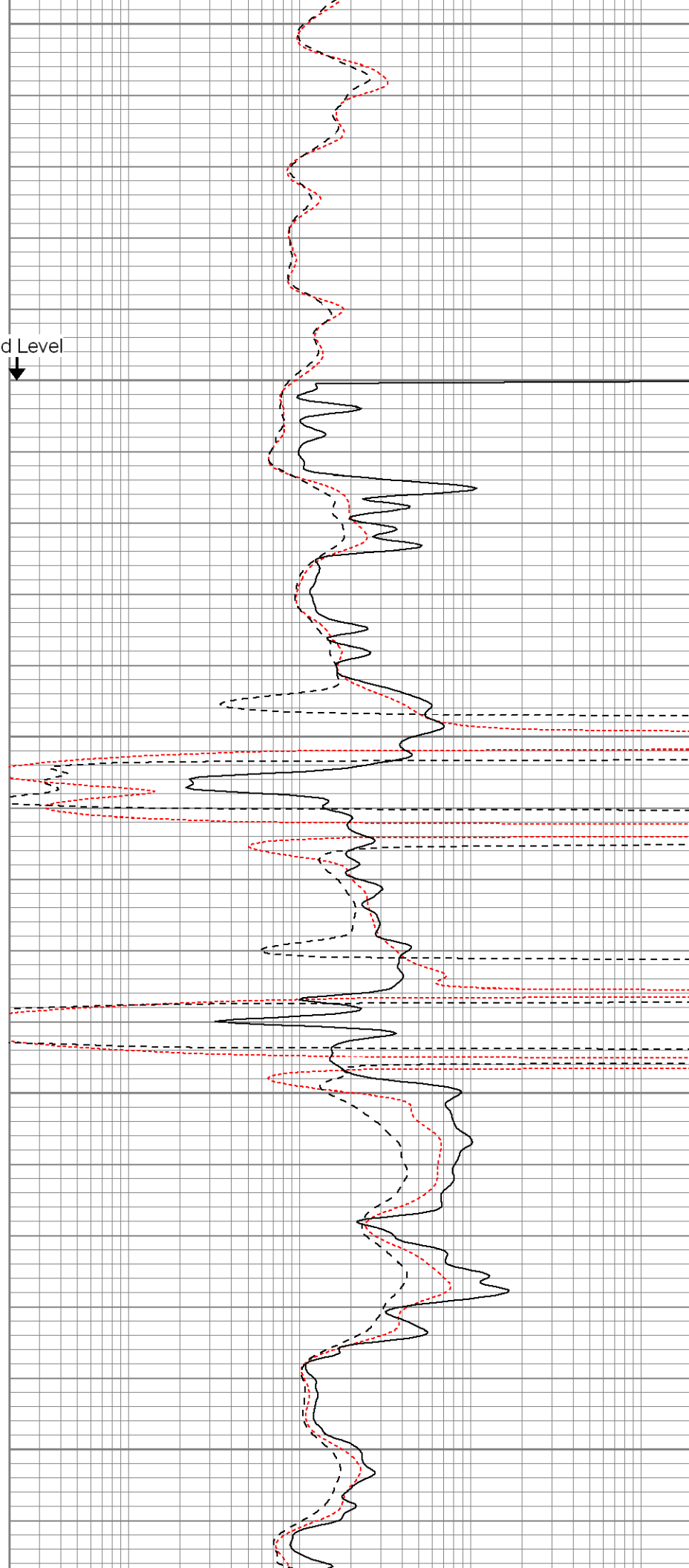
900

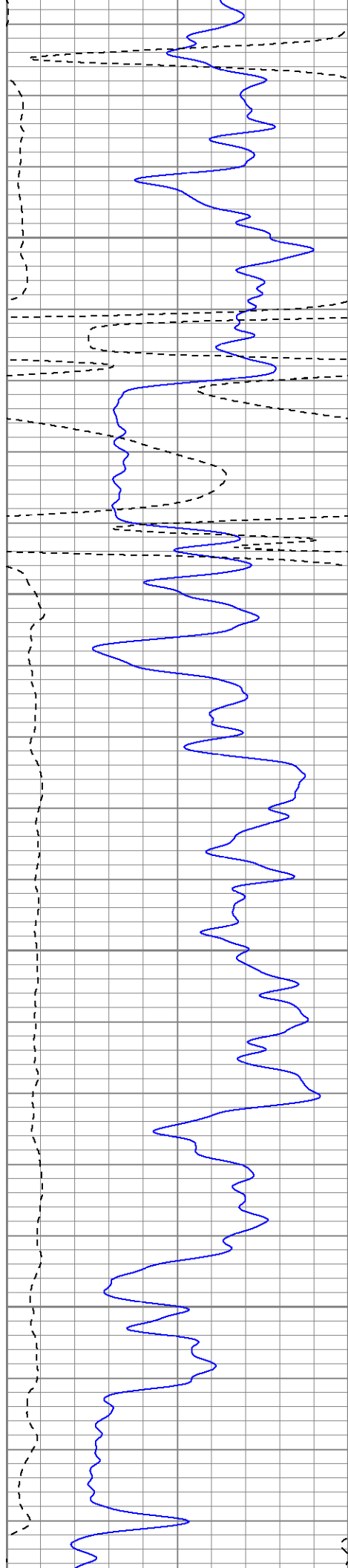
950

1000

1050

Fluid Level



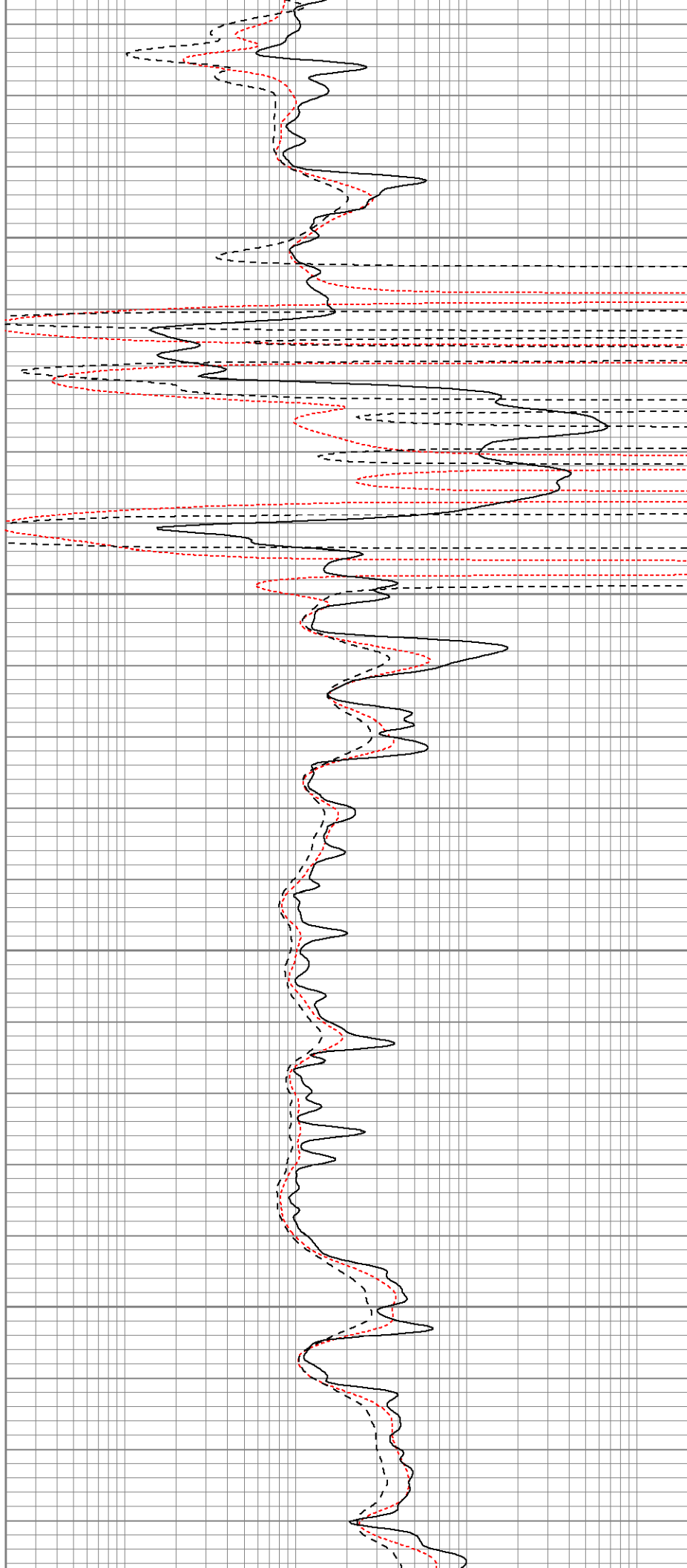


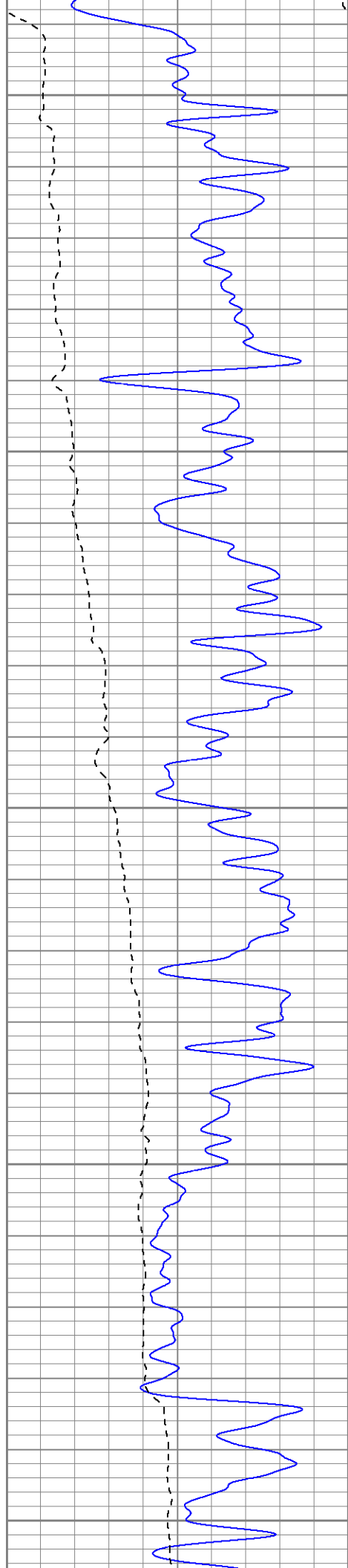
1100

1150

1200

1250





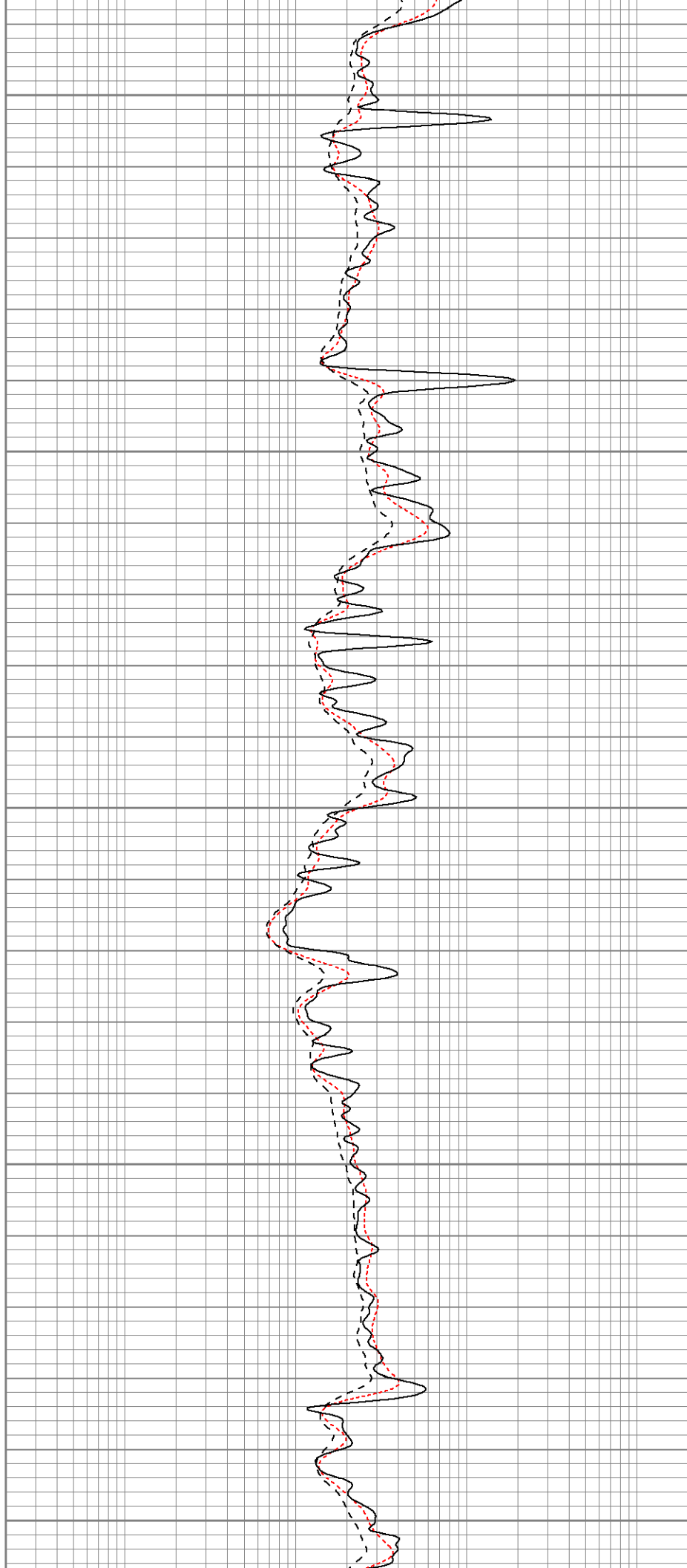
1300

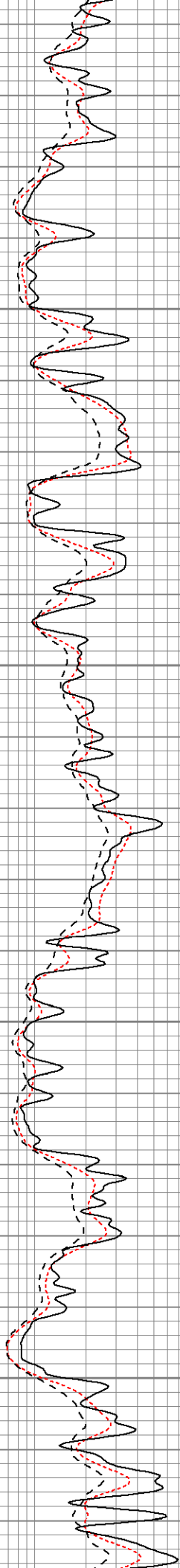
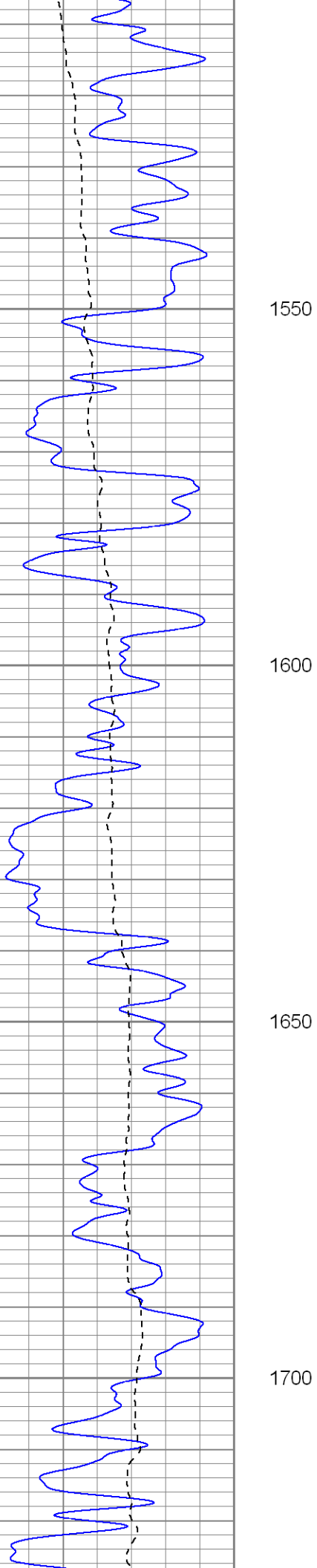
1350

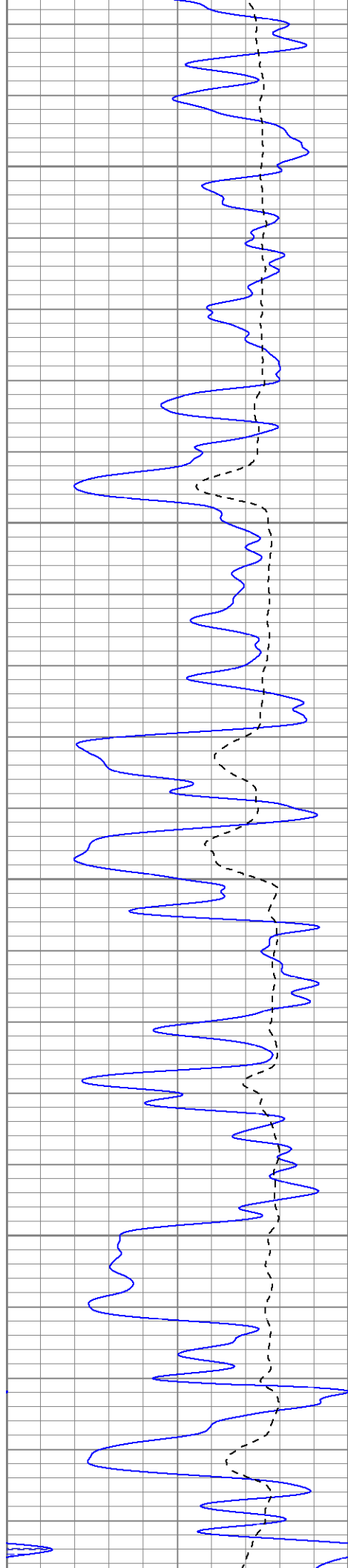
1400

1450

1500





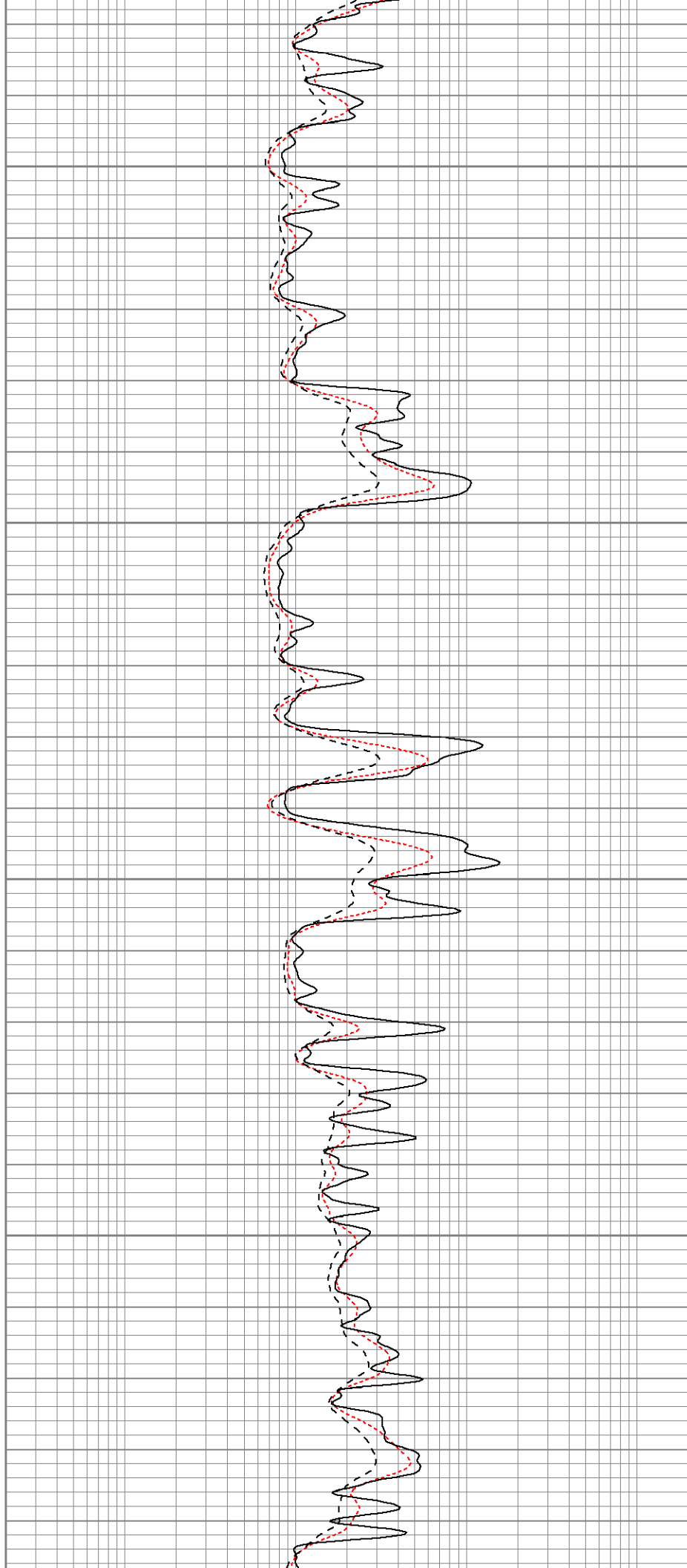


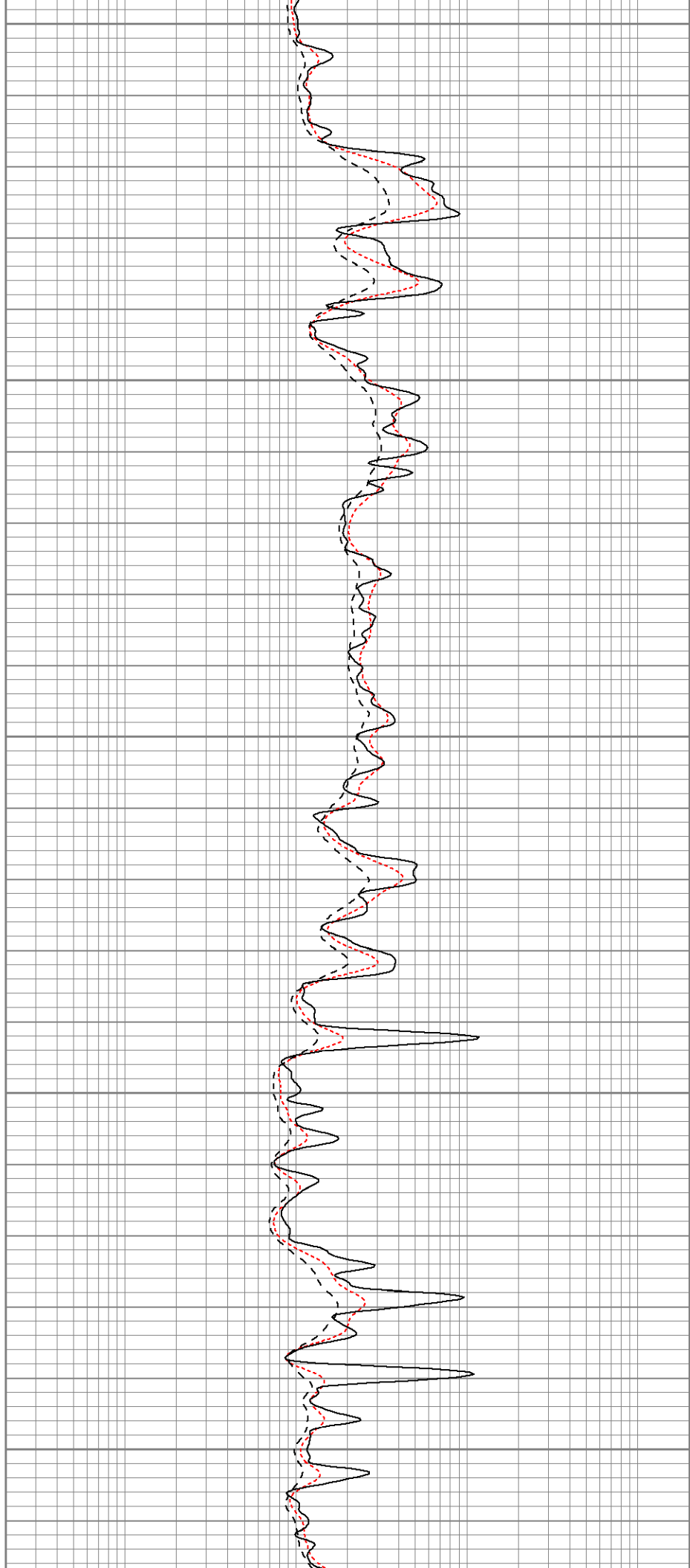
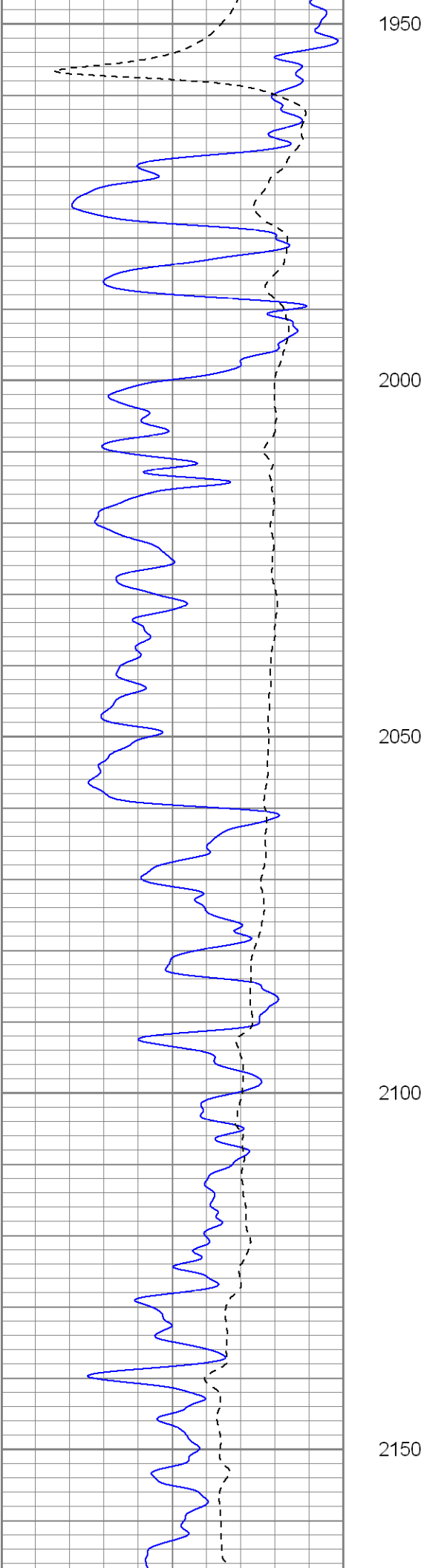
1750

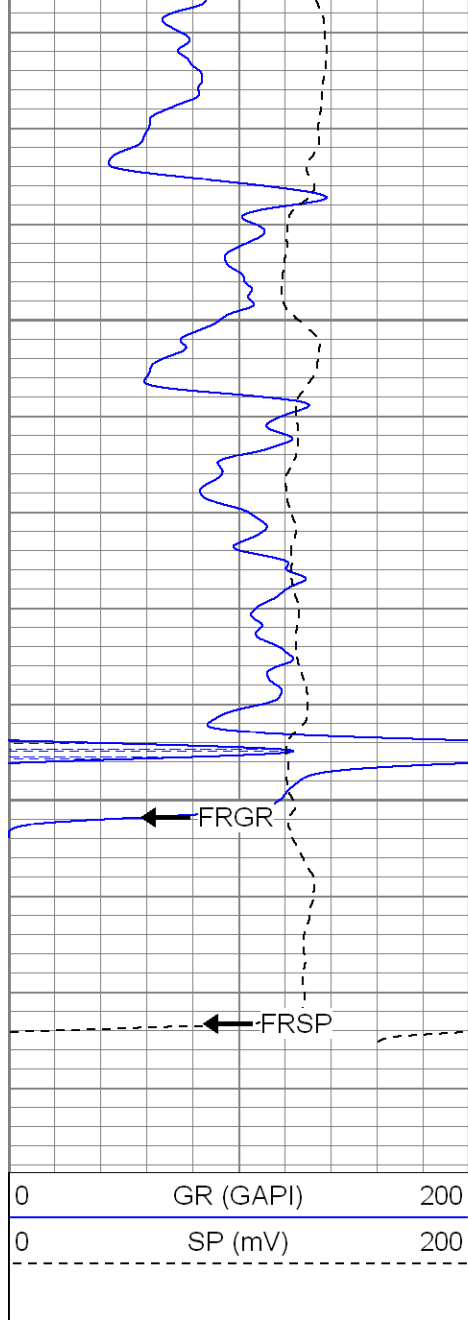
1800

1850

1900

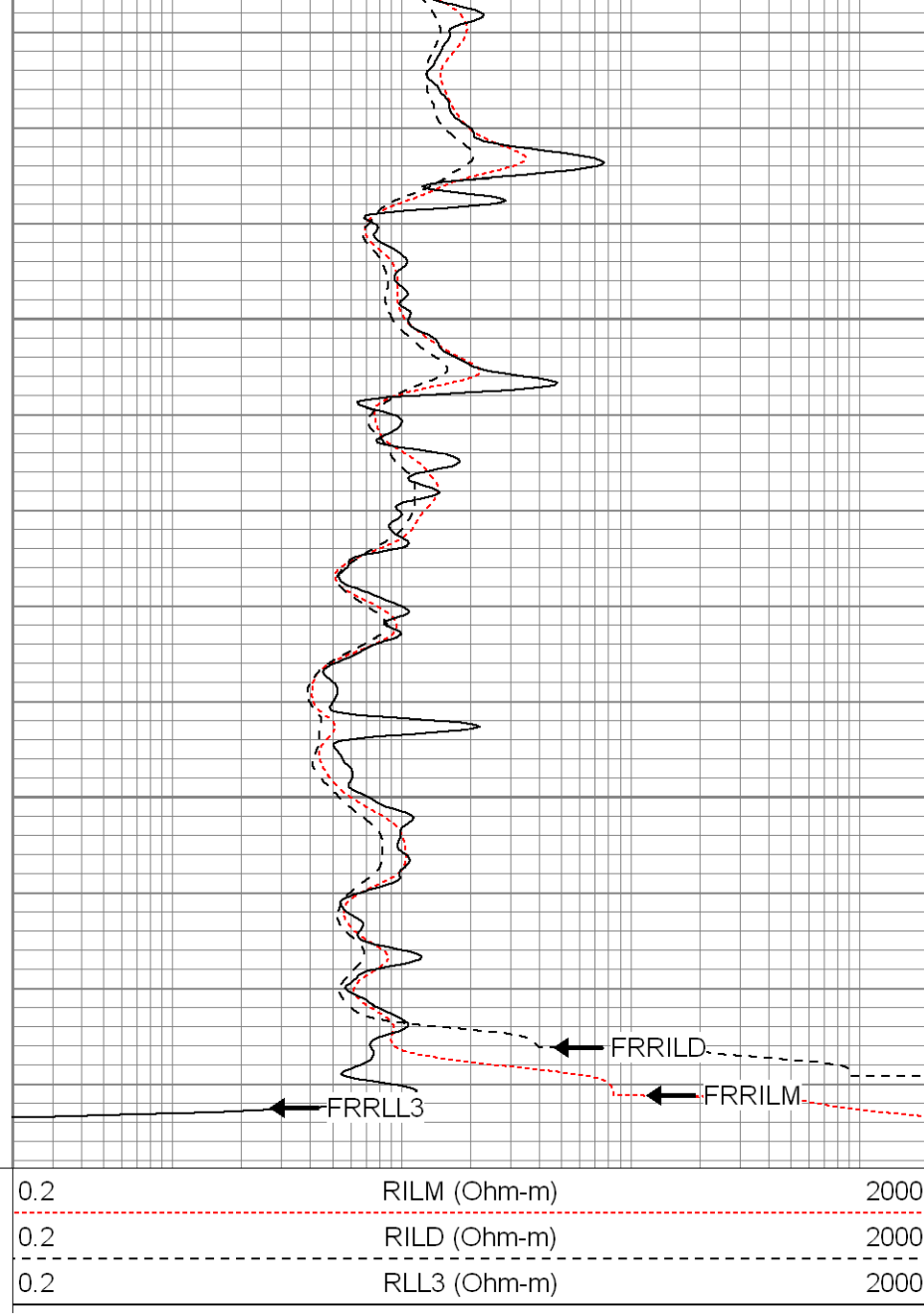






2200

2250



SUPERIOR

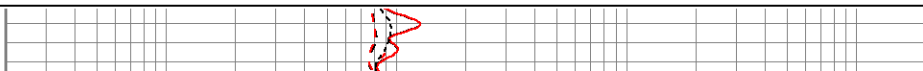
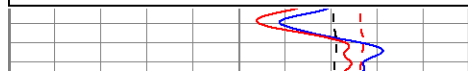
Black Lick, Pa.
Mercer, Pa.
Wooster, Oh.
Cleveland, Ok.
Trinidad, Co.

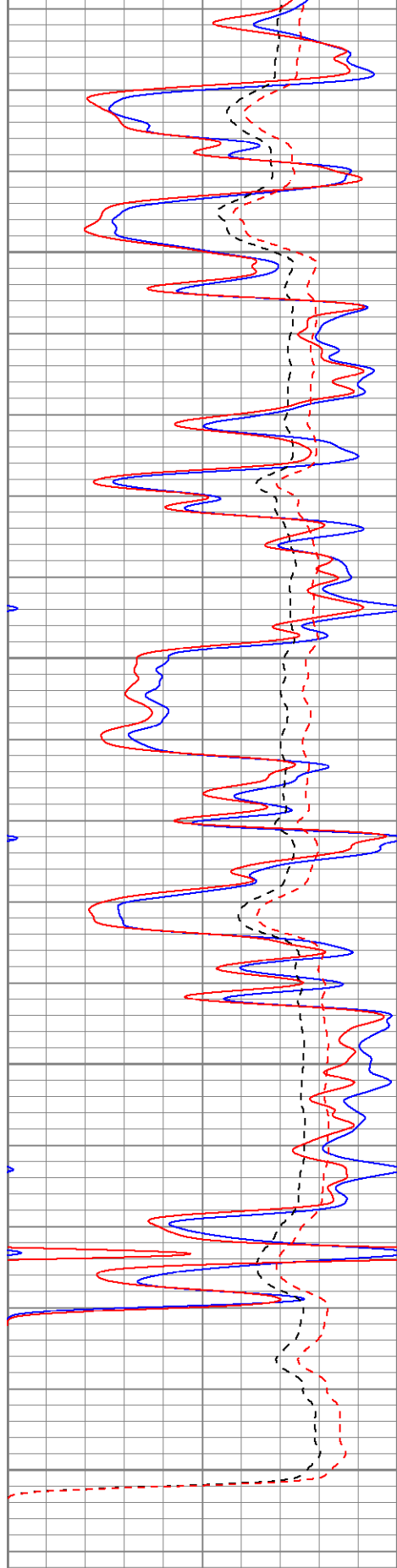
Repeat Section

Database File: xtohr0102.db
Dataset Pathname: pass1.1
Presentation Format: dil
Dataset Creation: Thu Mar 12 13:19:45 2009 by Calc Open-Cased 071220
Charted by: Depth in Feet scaled 1:240

0	GR (GAPI)	200
0	SP (mV)	200
0	GR-repeat (GAPI)	200
0	SP-repeat (mV)	200

0.2	RILM (Ohm-m)	2000
0.2	RILD (Ohm-m)	2000
0.2	RLL3 (Ohm-m)	2000
0.2	RLL3-repeat (Ohm-m)	2000
0.2	RILM-repeat (Ohm-m)	2000
0.2	RILD-repeat (Ohm-m)	2000





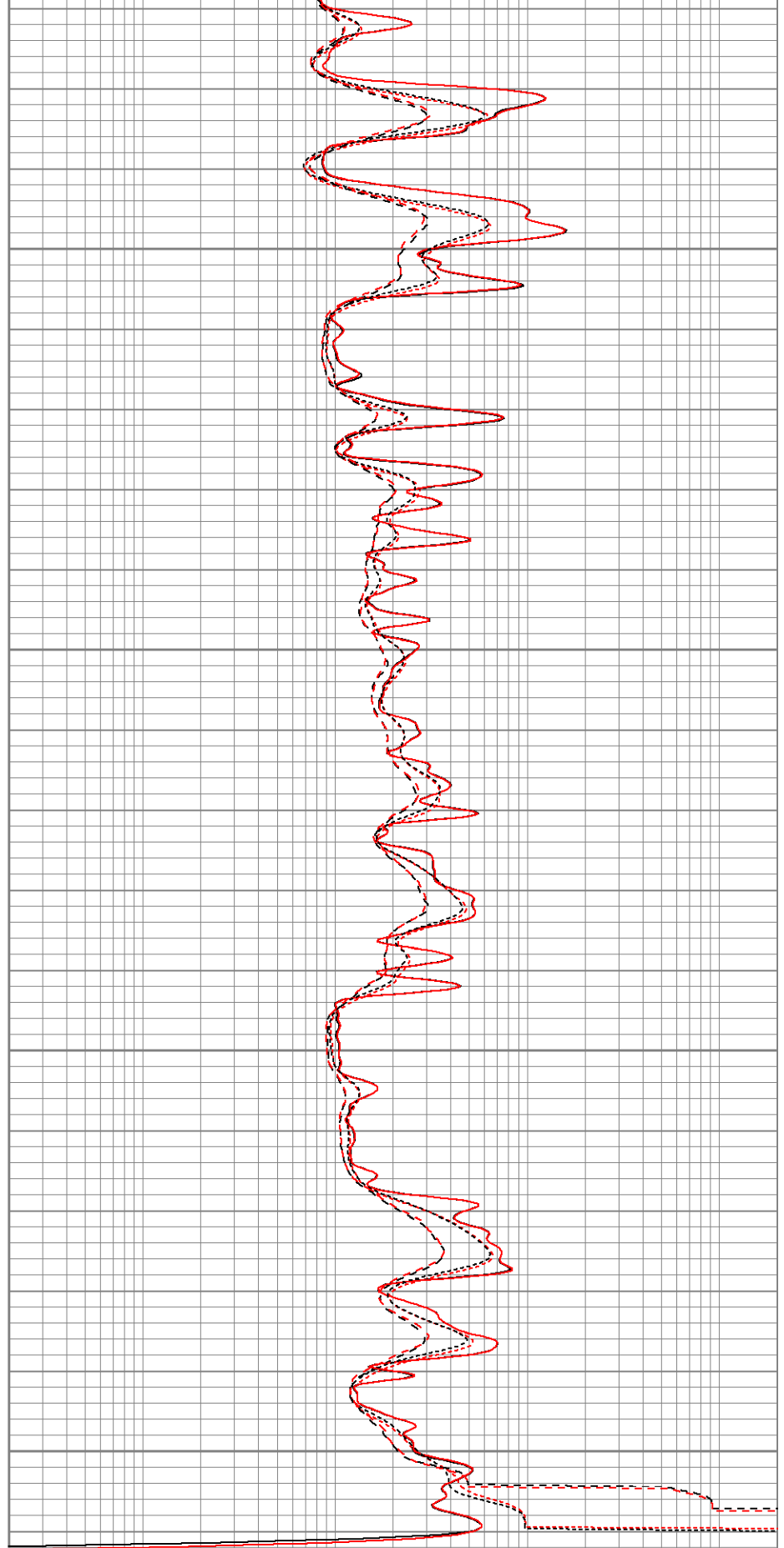
0	GR (GAPI)	200
0	SP (mV)	200
0	GR-repeat (GAPI)	200
0	SP-repeat (mV)	200

1850

1900

1950

2000



0.2	RILM (Ohm-m)	2000
0.2	RILD (Ohm-m)	2000
0.2	RLL3 (Ohm-m)	2000
0.2	RLL3-repeat (Ohm-m)	2000
0.2	RILM-repeat (Ohm-m)	2000
0.2	RILD-repeat (Ohm-m)	2000

0.2	RILM-repeat (Ohm-m)	2000
0.2	RILD-repeat (Ohm-m)	2000

Calibration Report		
Database File:	xtohr0102.db	
Dataset Pathname:	pass1	
Dataset Creation:	Thu Mar 12 12:12:06 2009 by Log Open-Cased 071220	

Dual Induction Calibration Report		
Serial-Model:	5375-G	
Surface Cal Performed:	Tue Mar 03 12:05:55 2009	
Downhole Cal Performed:	Thu Mar 12 12:06:12 2009	

Surface Calibration								
Loop:	Readings			References			Results	
	Air	Loop		Air	Loop		m	b
Deep	0.002	0.621	V	0.000	500.000	mmho-m	807.905	-1.800
Medium	0.003	0.743	V	0.000	600.000	mmho-m	811.317	-2.798
Internal:	Zero	Cal		Zero	Cal		m	b
Deep	0.002	0.621	V	0.000	500.000	mmho-m	807.937	-1.938
Medium	0.004	0.743	V	0.000	550.000	mmho-m	744.131	-2.816

Downhole Calibration								
Internal:	Readings			References			Results	
	Zero	Cal		Zero	Cal		m	b
Deep	-1.465	497.071	mmho-m	0.138	500.118	mmho-m	1.003	1.607
Medium	-0.231	548.134	mmho-m	0.250	549.936	mmho-m	1.002	0.482
Shallow	2.505	0.008	V	500.000	2.000	Ohm-m	130.000	0.000

Compensated Density Calibration Report		
Serial-Model:	2501DHT-DHT	
Source / Verifier:	/	
Master Calibration Performed:	Tue Mar 03 14:30:18 2009	

Master Calibration						
	Density			Far Detector	Near Detector	
Magnesium	1.710	g/cc		767.26	303.43	cps
Aluminum	2.590	g/cc		171.91	210.81	cps
Spine Angle = 76.32				Density/Spine Ratio = 0.572		
	Size			Reading		
Small Ring	8.00	in		6217.62		
Large Ring	14.00	in		10357.00		

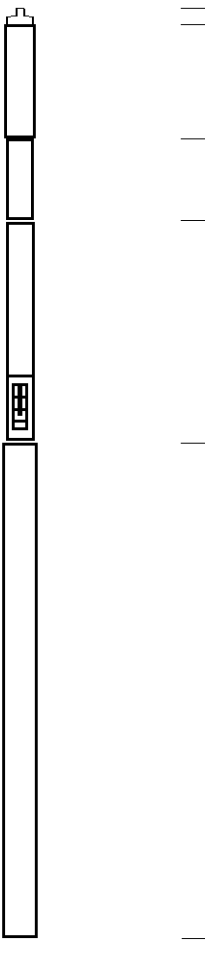
Gamma Ray Calibration Report		
------------------------------	--	--

Serial Number:	2001	
Tool Model:	OH	
Performed:	Thu Feb 26 13:18:39 2009	
Calibrator Value:	1.0	GAPI

Background Reading:	0.0	cps
Calibrator Reading:	1.0	cps
Sensitivity:	0.2500	GAPI/cps

Neutron Calibration Report

Serial Number:	5108	
Tool Model:	PROBE	
Performed:	Thu Feb 26 13:38:03 2009	
Calibrator Value:	1	NAPI
Calibrator Reading:	1	cps
Sensitivity:	1	NAPI/cps

Sensor	Offset (ft)	Schematic	Description	Len (ft)	OD (in)	Wt (lb)
NEU	37.85		None	0.75	1.50	5.00
			NEU-PROBE (5108) Probe Epithermal	4.92	3.63	85.00
GR	32.32		GR-OH (2001) 2001	3.56	3.25	40.00
			CDL-DHT (2501DHT) Digital High Temp CDL Tool	9.69	4.00	201.00
LSD	23.78					
DCAL	23.49					
SSD	23.24					
HEADVOLT	21.47					
CILD SP	10.60		DIL-G (5375) Gearhart	21.47	4.00	345.00
CILM	6.89					
RLL3	1.70					
Dataset: xtohr0102.db: field/well/run1/pass1 Total Length: 40.39 ft Total Weight: 676.00 lb O.D. 4.00 in						