



SUPERIOR
Black Lick, Pa.
Mercer, Pa.
Wooster, Oh.
Cleveland, Ok.
Trinidad, Co.

DUAL INDUCTION LOG

Company XTO Energy Inc.
Well Hill Ranch 06-04
Field Purgatoire River
County Las Animas State Colorado

Location: API # : 05 071 09566 00

327 FNL & 900' FWL

SEC 06 TWP 35S RGE 67W

Permanent Datum Ground Level Elevation 8517'
Log Measured From Ground Level
Drilling Measured From Ground Level

Other Services
CDL
NEU
Elevation
K.B. -----
D.F. -----
G.L. 8517'

Date 3-8-09

Run Number One

Depth Driller 2370'

Depth Logger 1896'

Bottom Logged Interval 1894'

Top Log Interval Surface Casing

Casing Driller 8 5/8" @ 460'

Casing Logger 456'

Bit Size 7 7/8"

Type Fluid in Hole Water

Density / Viscosity ///

pH / Fluid Loss ///

Source of Sample ///

Rm @ Meas. Temp ///

Rmf @ Meas. Temp ///

Rmc @ Meas. Temp ///

Source of Rmf / Rmc ///

Rm @ BHT ///

Time Circulation Stopped 6:30 A.M.

Time Logger on Bottom 1:15 P.M.

Maximum Recorded Temperature 83 DEG F

Equipment Number T0701

Location Trinidad

Recorded By C. Sineros

Witnessed By Mr. Dalton King

<<< Fold Here >>>

All interpretations are opinions based on inferences from electrical or other measurements and we cannot and do not guarantee the accuracy or correctness of any interpretation, and we shall not, except in the case of gross or willful negligence on our part, be liable or responsible for any loss, costs, damages, or expenses incurred or sustained by anyone resulting from any interpretation made by any of our officers, agents or employees. These interpretations are also subject to our general terms and conditions set out in our current Price Schedule.

Comments

Well Directions:

Lorencito, take door # 6 to top of hill, stay on main road past trash dumpster, stay straight, at Y stay left, stay on main road, at beige tank stay right, at big rocks take left, go straight up hill, past 3 locations, take hard right, end on first drive thru location.

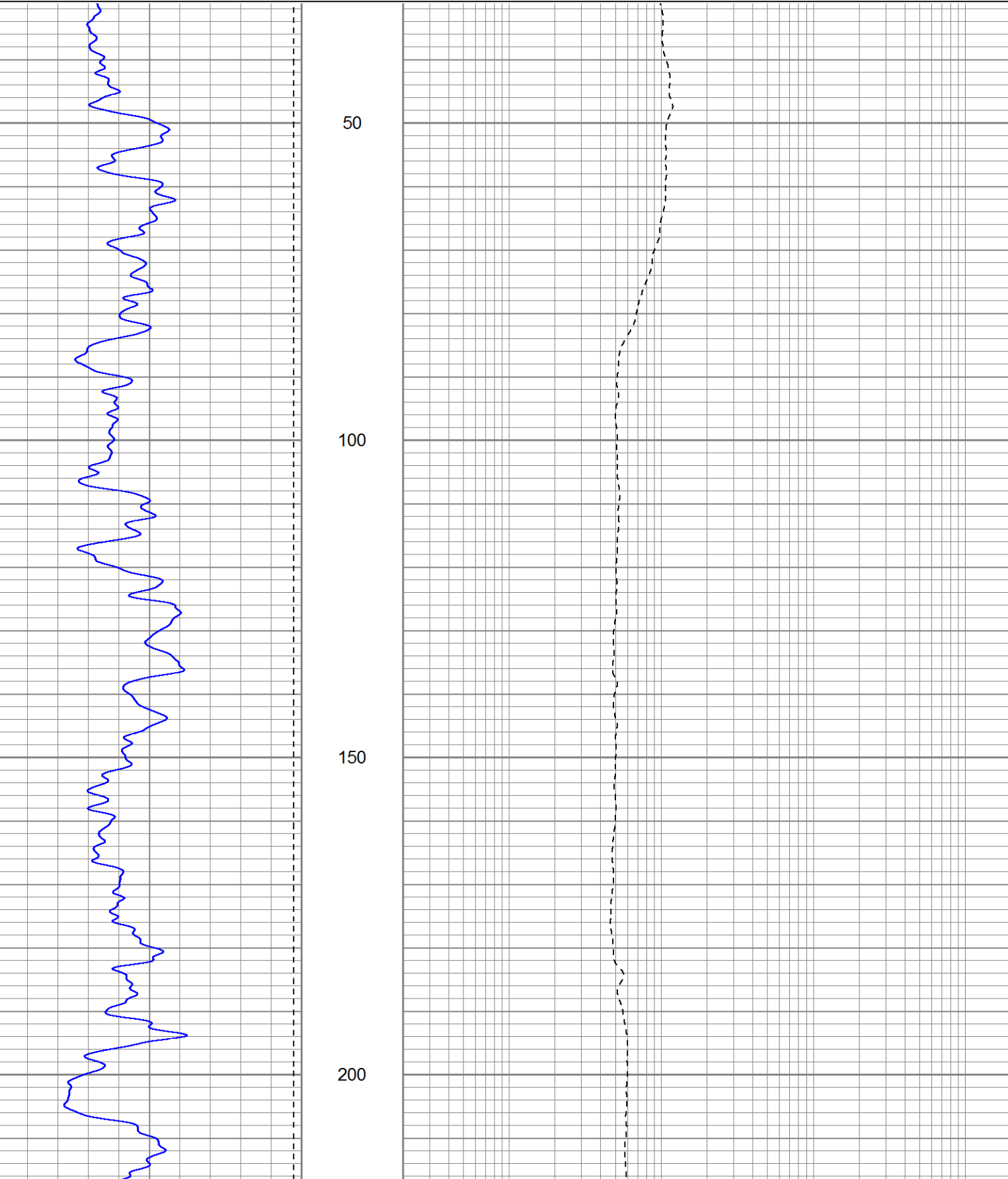


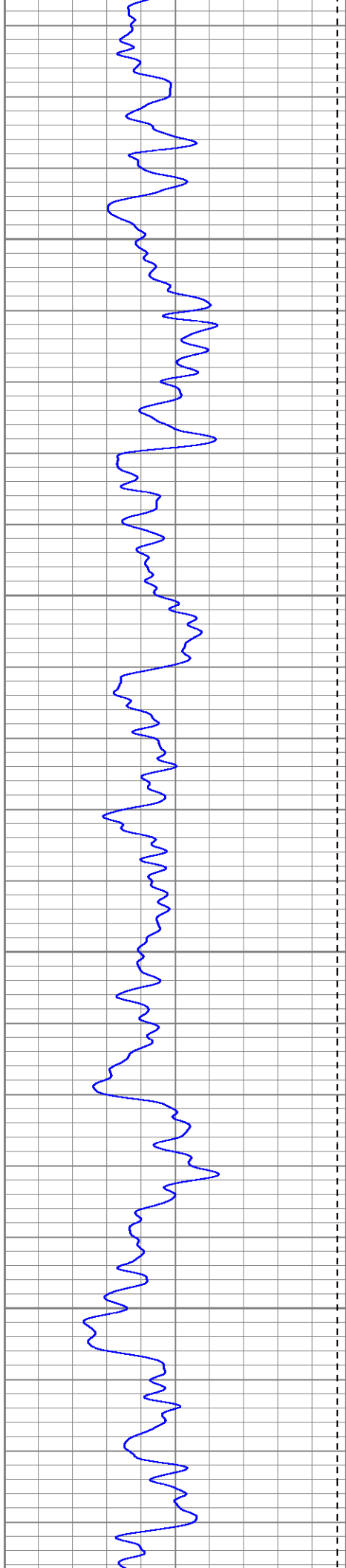
SUPERIOR
Black Lick, Pa.
Mercer, Pa.
Wooster, Oh.
Cleveland, Ok.
Trinidad, Co.

Main Pass

Database File: xtohr06-04.db
Dataset Pathname: pass2.4
Presentation Format: dil
Dataset Creation: Mon Mar 09 08:23:34 2009 by Calc Open-Cased 071220
Charted by: Depth in Feet scaled 1:240

0	GR (GAPI)	200	0.2	RILD (Ohm-m)	2000
-200	SP (mV)	0	0.2	RILM (Ohm-m)	2000
			0.2	RLL3 (Ohm-m)	2000



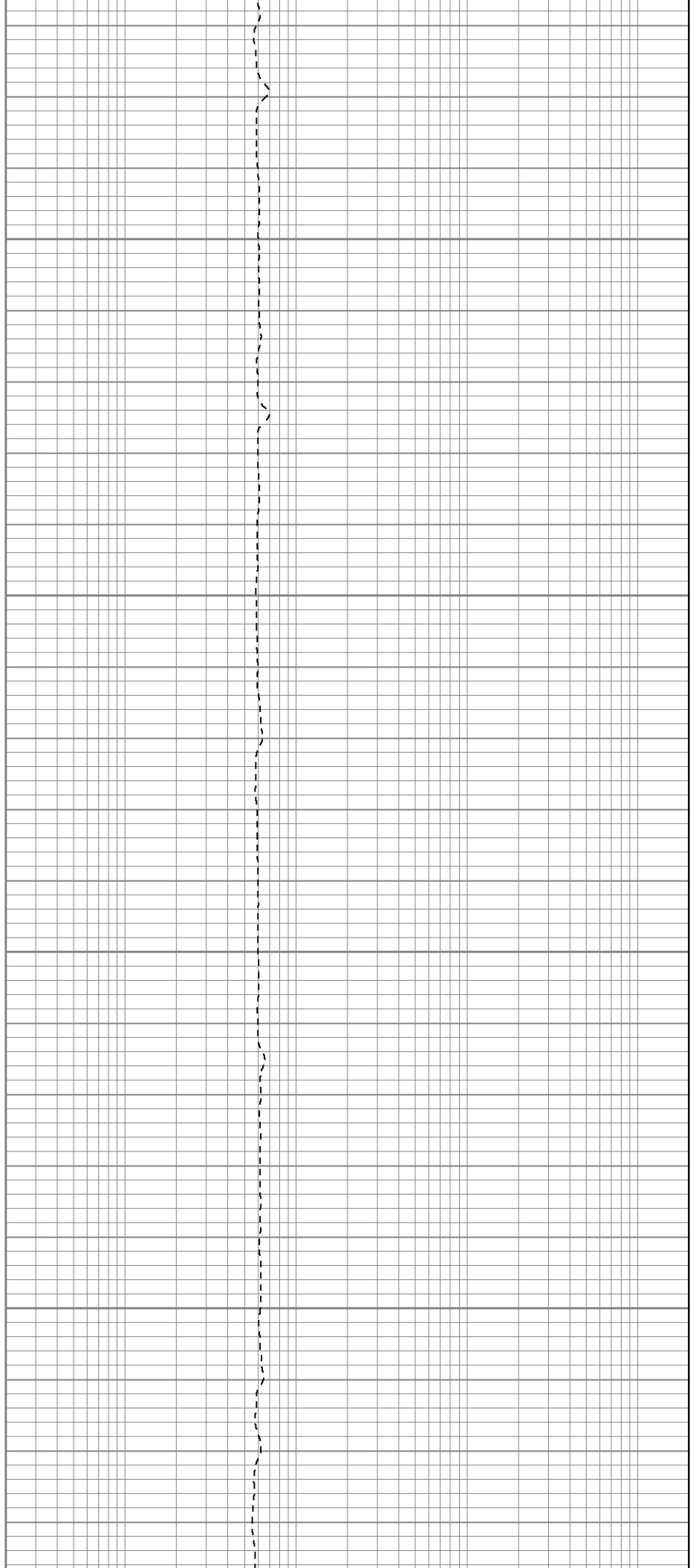


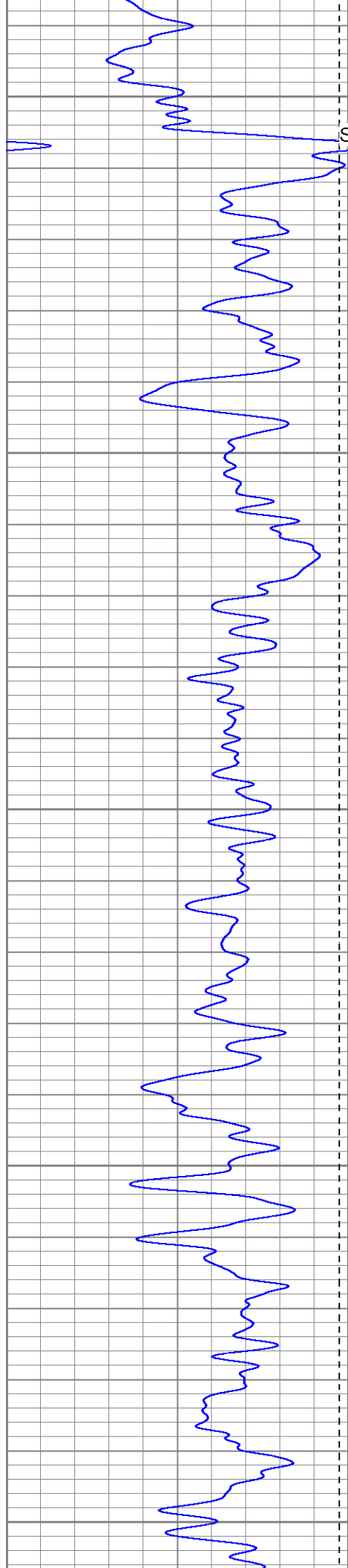
250

300

350

400





450

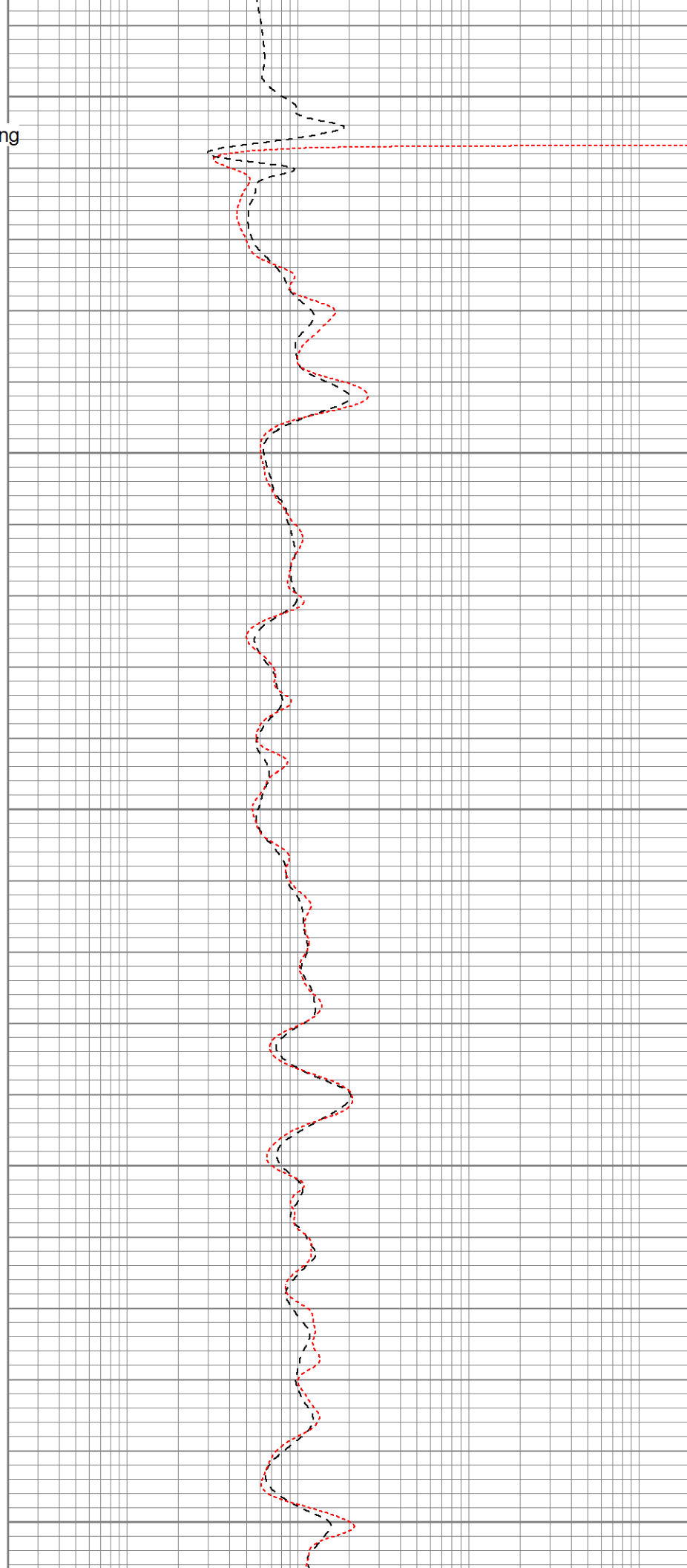
Surface Casing

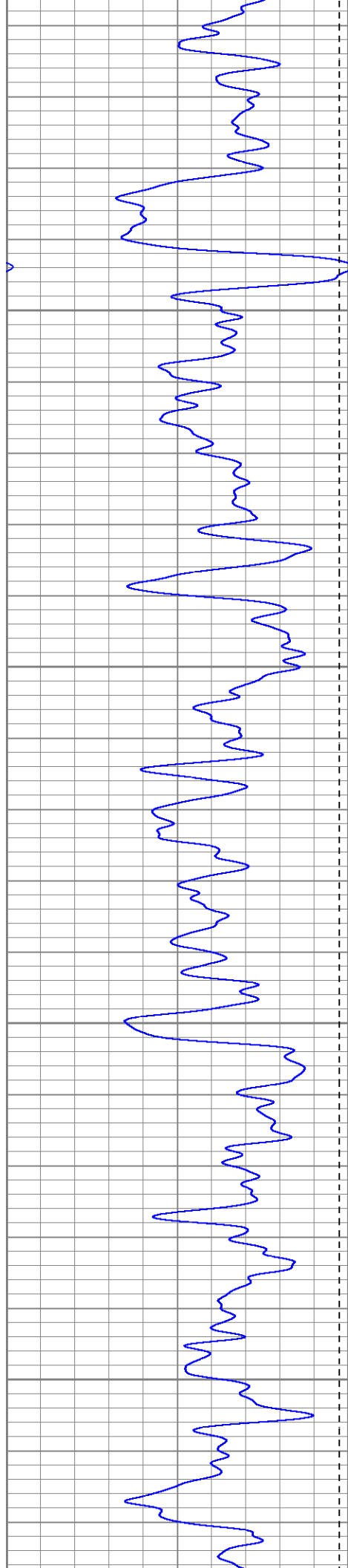
500

550

600

650



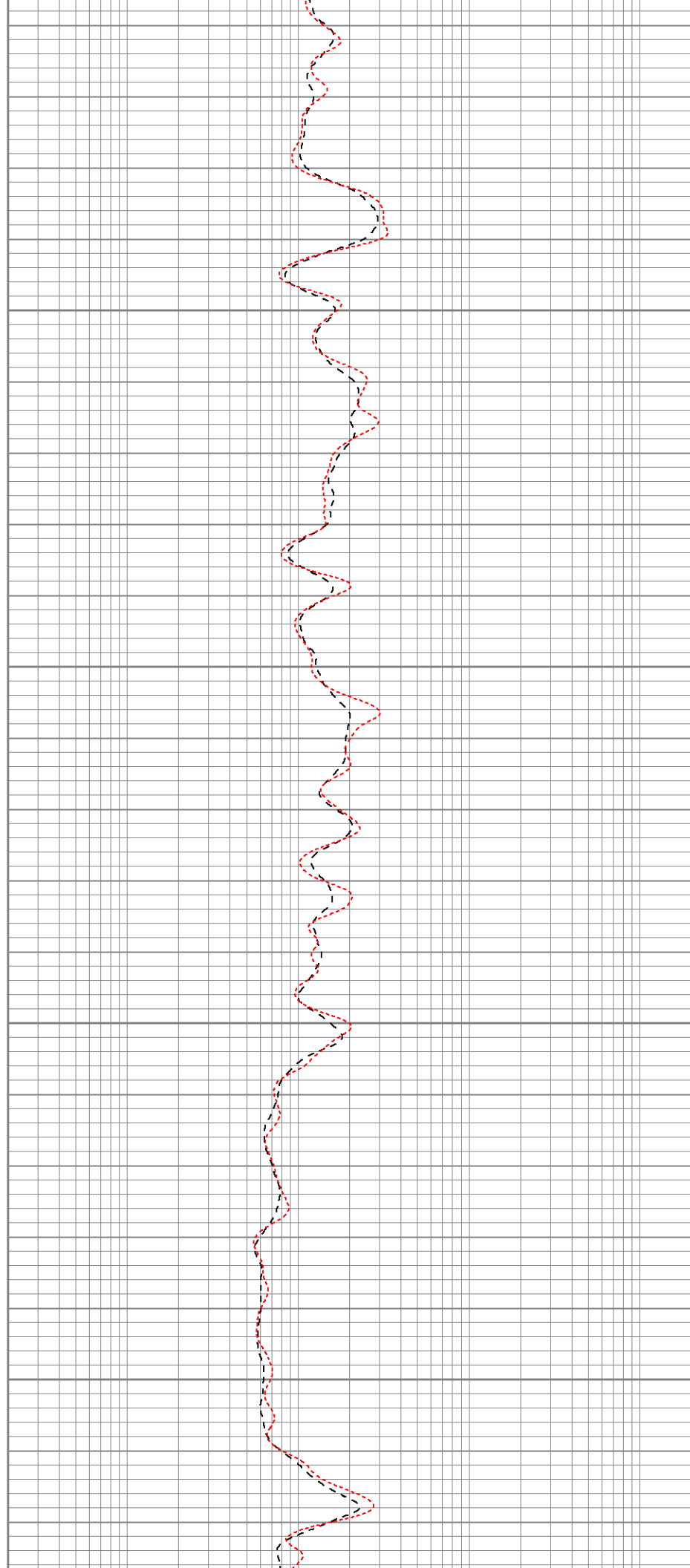


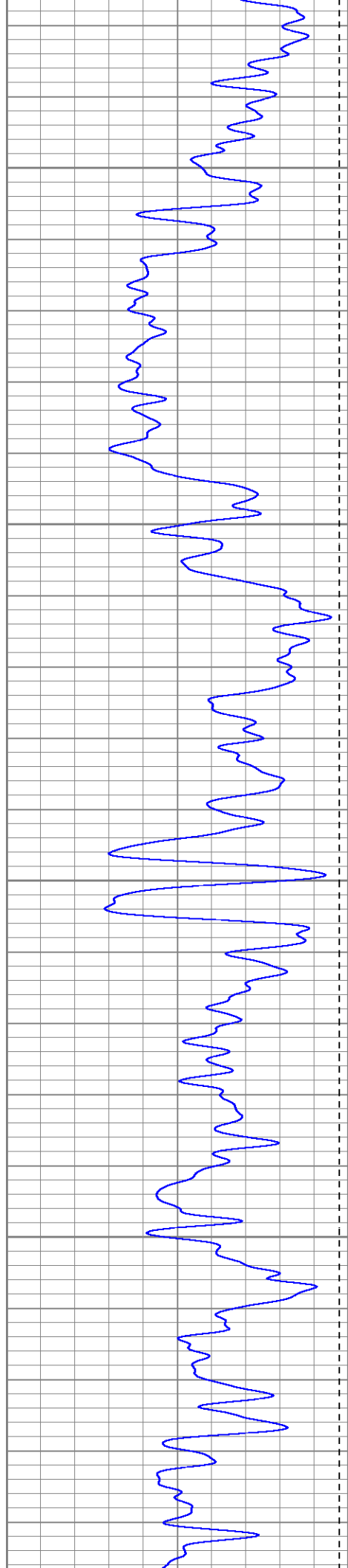
700

750

800

850



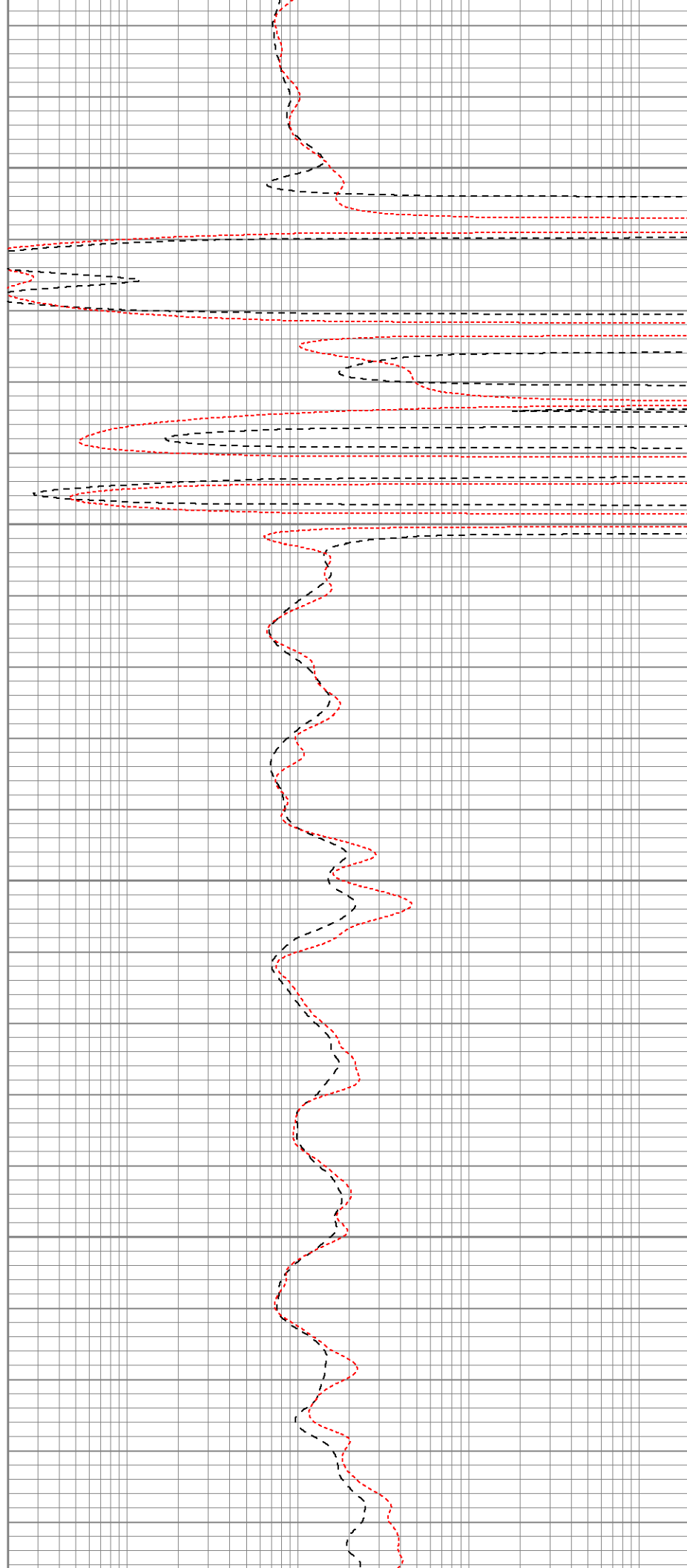


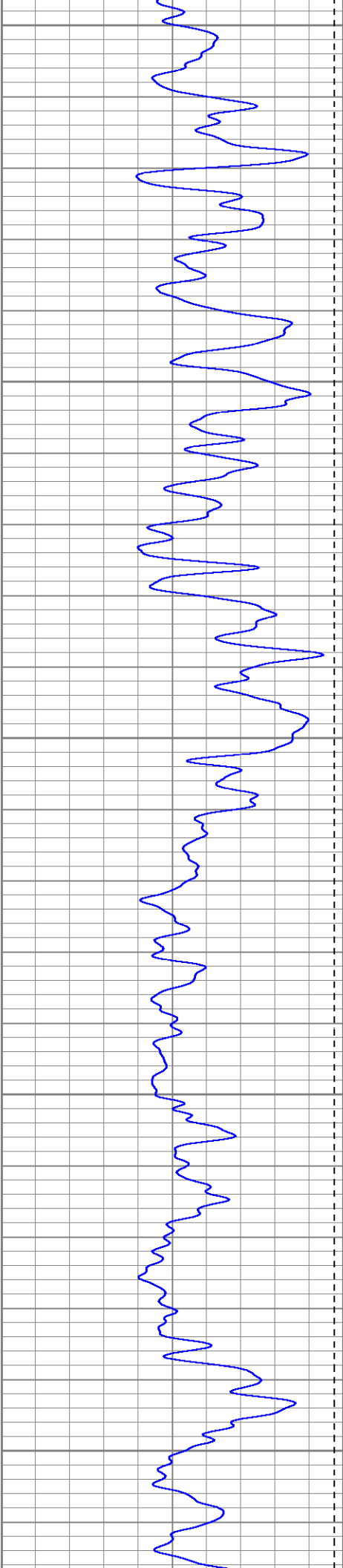
900

950

1000

1050





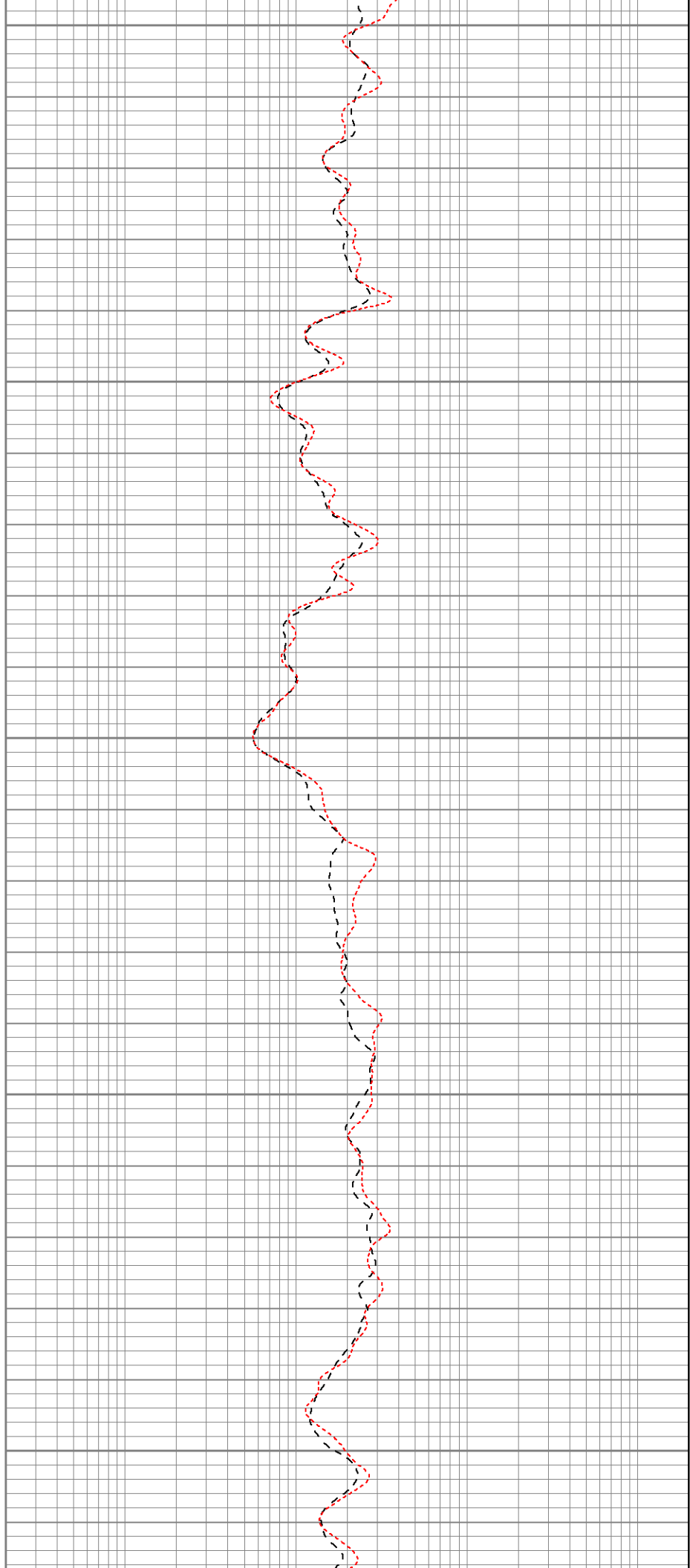
1100

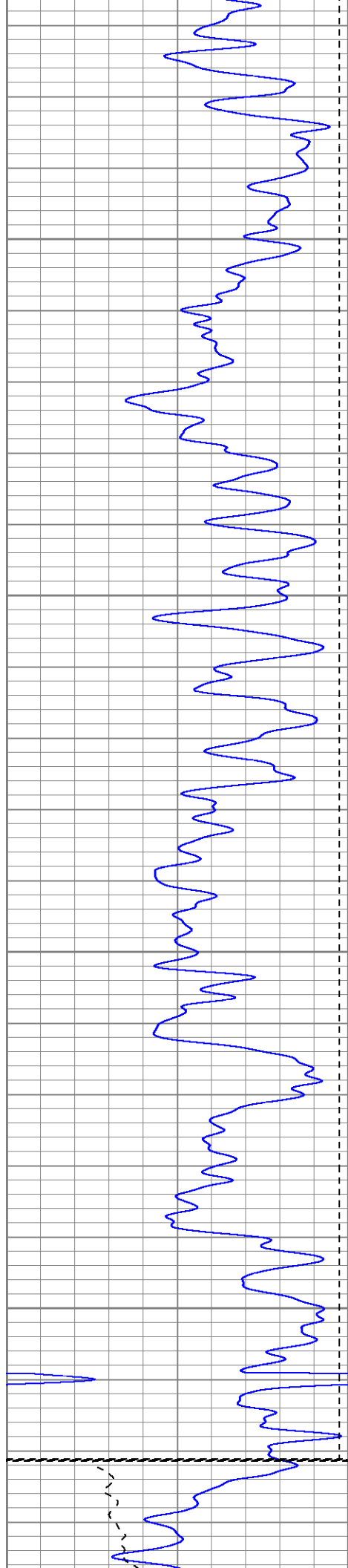
1150

1200

1250

1300





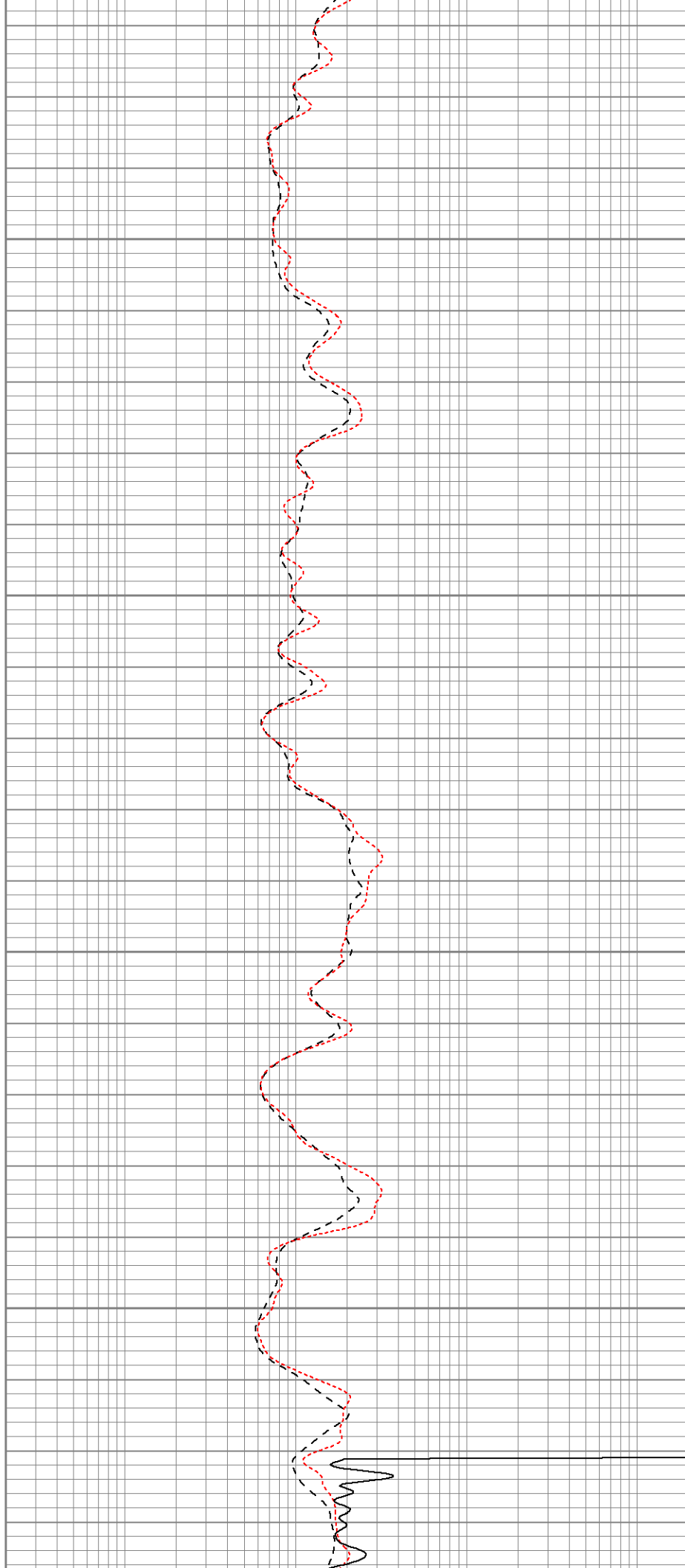
1350

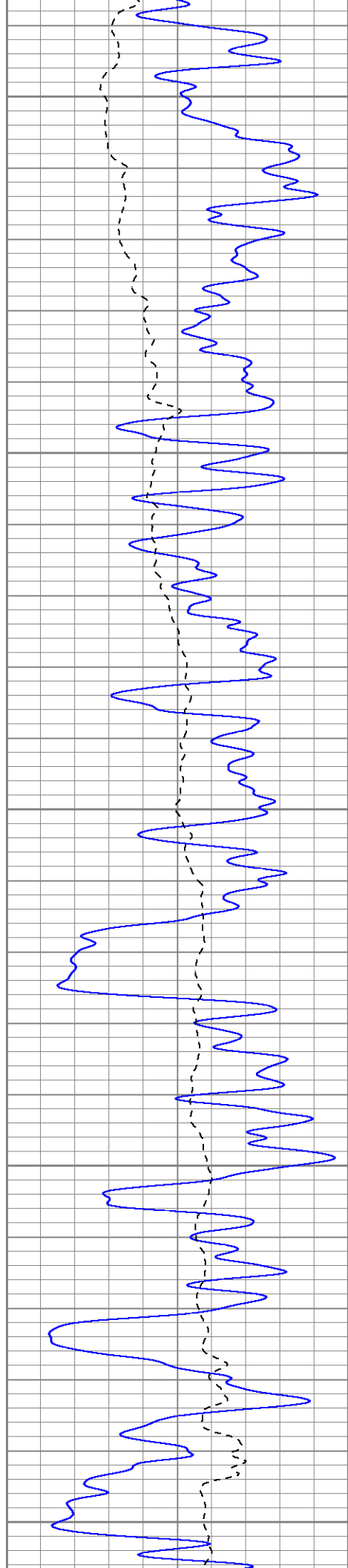
1400

1450

1500

Fluid Level





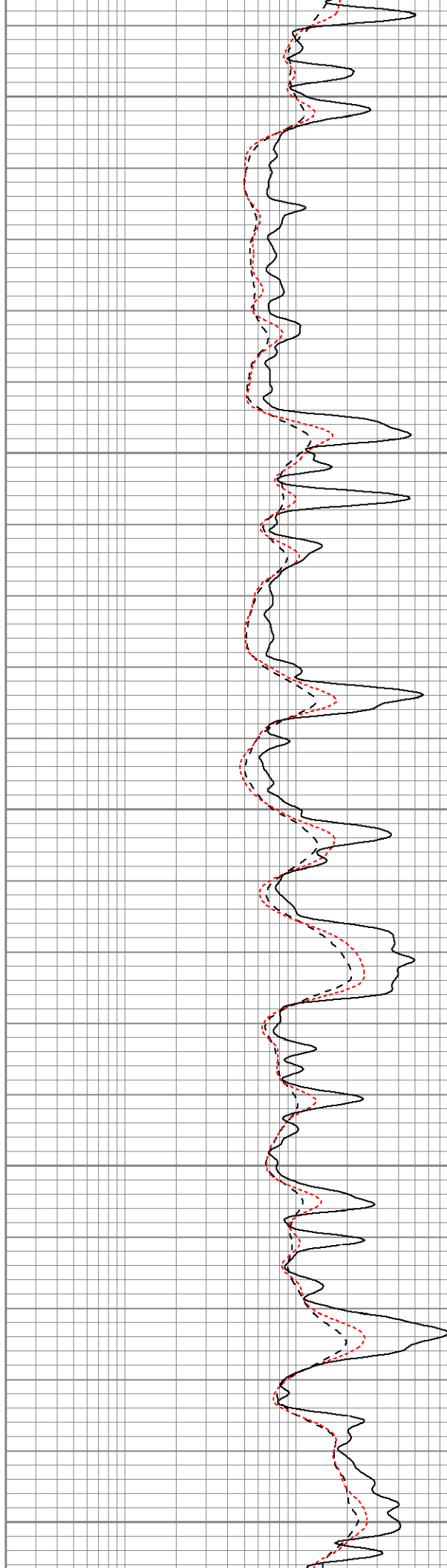
1550

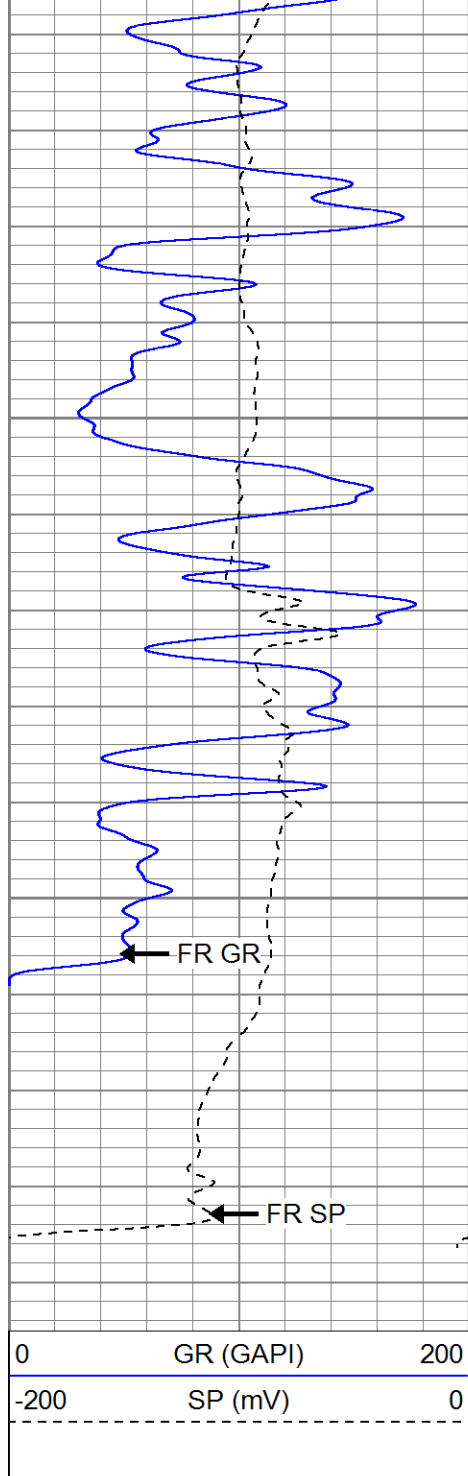
1600

1650

1700

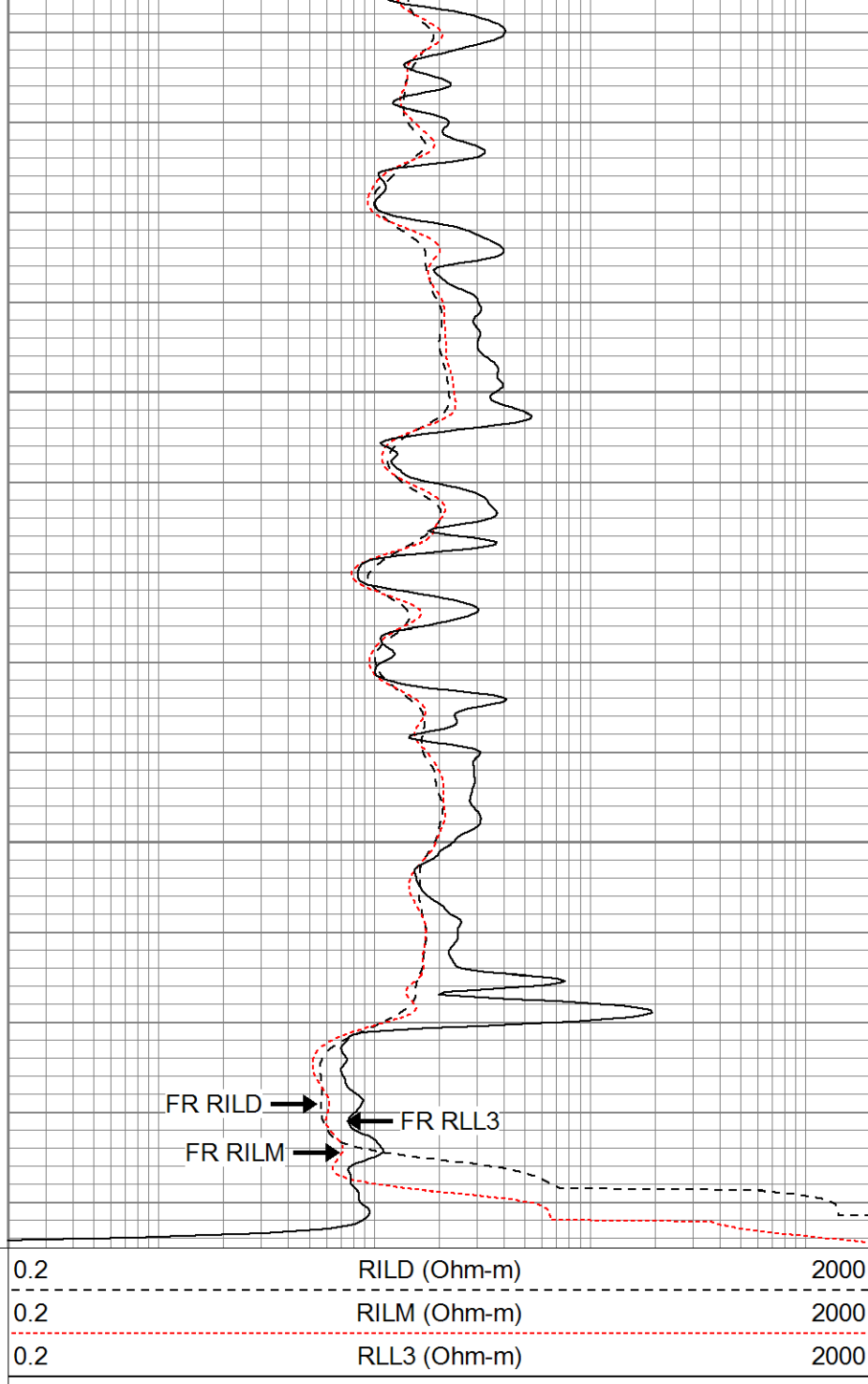
1750





1800

1850



SUPERIOR

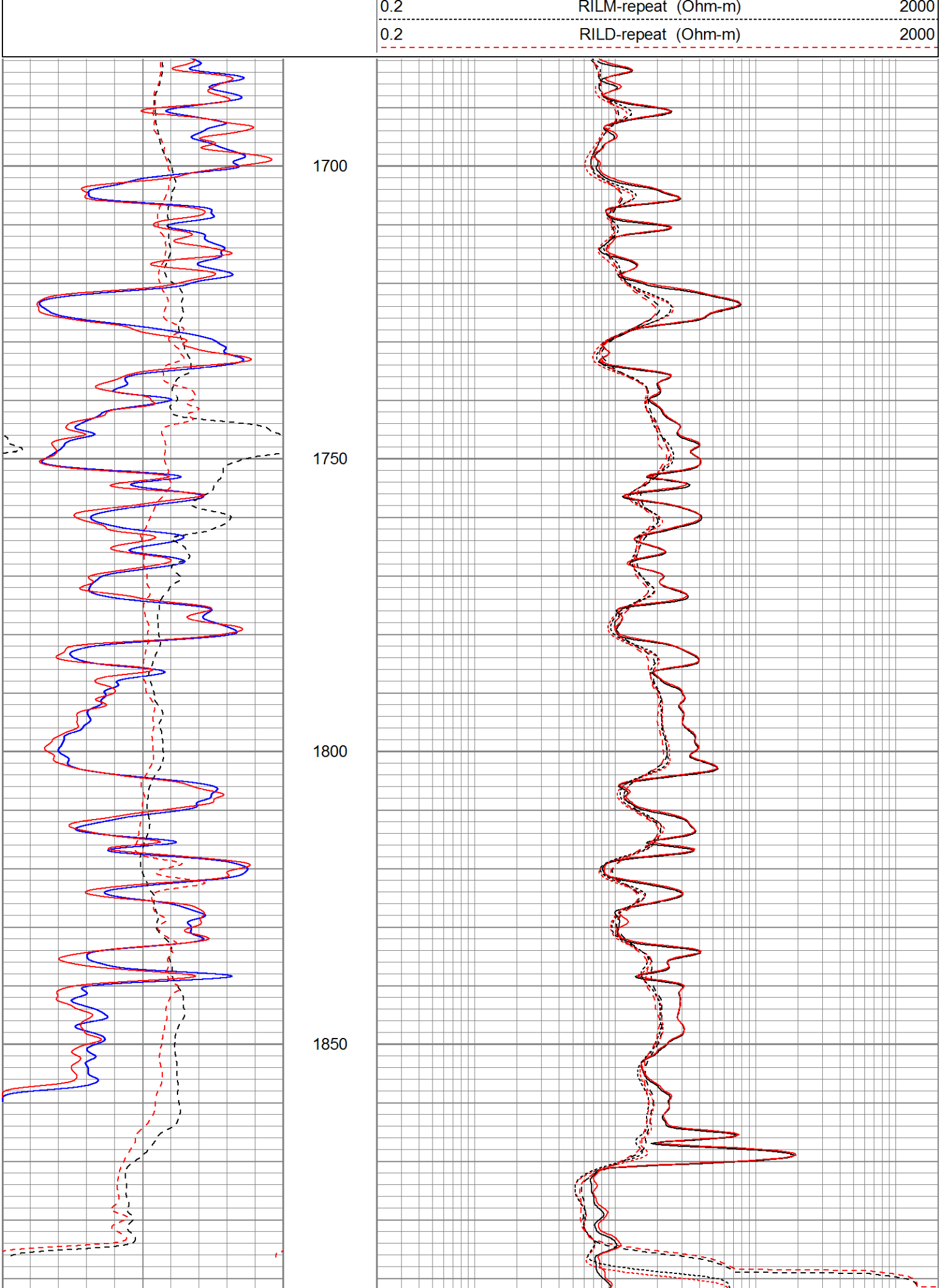
Black Lick, Pa.
Mercer, Pa.
Wooster, Oh.
Cleveland, Ok.
Trinidad, Co.

Repeat Section

Database File: xtchr06-04.db
Dataset Pathname: pass1.3
Presentation Format: dil
Dataset Creation: Mon Mar 09 08:28:20 2009 by Calc Open-Cased 071220
Charted by: Depth in Feet scaled 1:240

0	GR (GAPI)	200
-200	SP (mV)	0
0	GR-repeat (GAPI)	200
-200	SP-repeat (mV)	0

0.2	RILD (Ohm-m)	2000
0.2	RILM (Ohm-m)	2000
0.2	RLL3 (Ohm-m)	2000
0.2	RLL3-repeat (Ohm-m)	2000






0	GR (GAPI)	200	0.2	RILD (Ohm-m)	2000
-200	SP (mV)	0	0.2	RILM (Ohm-m)	2000
0	GR-repeat (GAPI)	200	0.2	RLL3 (Ohm-m)	2000
-200	SP-repeat (mV)	0	0.2	RLL3-repeat (Ohm-m)	2000
			0.2	RILM-repeat (Ohm-m)	2000
			0.2	RILD-repeat (Ohm-m)	2000

Calibration Report									
Database File:		xtohr06-04.db							
Dataset Pathname:		pass2							
Dataset Creation:		Sun Mar 08 12:06:52 2009 by Log Open-Cased 071220							
Dual Induction Calibration Report									
Serial-Model:		5375-G							
Surface Cal Performed:		Sun Mar 08 11:40:19 2009							
Downhole Cal Performed:		Sun Mar 08 11:47:28 2009							
Surface Calibration									
		Readings			References			Results	
Loop:	Air	Loop		Air	Loop		m	b	
Deep	0.008	0.626	V	0.000	500.000	mmho-m	808.535	-6.509	
Medium	0.009	0.748	V	0.000	550.000	mmho-m	743.848	-6.615	
Internal:	Zero	Cal		Zero	Cal		m	b	
Deep	0.008	0.626	V	0.000	500.000	mmho-m	808.503	-6.356	
Medium	0.009	0.748	V	0.000	550.000	mmho-m	744.032	-6.521	
Downhole Calibration									
		Readings			References			Results	
Internal:	Zero	Cal		Zero	Cal		m	b	
Deep	-0.271	499.817	mmho-m	-0.153	499.867	mmho-m	1.000	0.118	
Medium	-0.041	550.005	mmho-m	-0.095	549.768	mmho-m	1.000	-0.054	
Shallow	2.512	0.017	V	500.000	2.000	Ohm-m	125.000	-3.000	

Compensated Density Calibration Report					
Serial-Model:		901-2.75POH			
Source / Verifier:		/			
Master Calibration Performed:		Thu Mar 05 11:41:01 2009			
Master Calibration					
	Density		Far Detector		Near Detector
Magnesium	1.710	g/cc	1032.51	516.27	cps
Aluminum	2.590	g/cc	184.87	256.60	cps
Spine Angle = 67.88			Density/Spine Ratio = 0.474		
	Size		Reading		
Small Ring	8.00	in	2.55	V	
Large Ring	17.00	in	4.60	V	

Large Ring			17.00	in	4.00	in
Neutron Calibration Report						
Serial Number:	803					
Tool Model:	2.75POH					
Performed:	Fri Feb 27 11:14:22 2009					
Calibrator Value:	1	NAPI				
Calibrator Reading:	1	cps				
Sensitivity:	1	NAPI/cps				
Gamma Ray Calibration Report						
Serial Number:	804					
Tool Model:	2.75POH					
Performed:	Fri Feb 27 10:14:54 2009					
Calibrator Value:	200.0	GAPI				
Background Reading:	50.0	cps				
Calibrator Reading:	250.0	cps				
Sensitivity:	0.6000	GAPI/cps				

Sensor	Offset (ft)	Schematic	Description	Len (ft)	OD (in)	Wt (lb)	
GR	37.81		None	0.75	1.50	5.00	
			GR-2.75POH (804) Probe	3.73	2.75	43.00	
NEU	32.27		NEU-2.75POH (803) Probe Epithermal	4.75	2.75	58.00	
			CDL-2.75POH (902) Probe	8.43	2.75	106.00	
LSD	24.44			Probe	0.89	3.50	20.00
DCAL	24.16						
SSD	23.91						
CILD SP	10.60		DIL-G (5375) Gearhart	20.80	4.00	345.00	
	10.60						

