



**SUPERIOR**  
Black Lick, Pa.  
Mercer, Pa.  
Wooster, Oh.  
Cleveland, Ok.  
Trinidad, Co.

## DUAL INDUCTION LOG

Company XTO Energy Inc.  
Well Hill Ranch 01-12  
Field Purgatoire River  
County Las Animas State Colorado

Location: API #: 05 071 09562 00

2314' FSL & 645' FWL

SEC 01 TWP 35S RGE 68W

Permanent Datum	Ground Level	Elevation	8659'
Log Measured From	Ground Level		
Drilling Measured From	Ground Level		

Other Services  
CDL  
NEU  
Elevation  
K.B. -----  
D.F. -----  
G.L. 8659'

Date	3-4-09		
Run Number	One		
Depth Driller	2275'		
Depth Logger	2273'		
Bottom Logged Interval	2271'		
Top Log Interval	Surface Casing		
Casing Driller	8 5/8" @ 456'		
Casing Logger	454'		
Bit Size	7 7/8"		
Type Fluid in Hole	Water		
Density / Viscosity	///		
pH / Fluid Loss	///		
Source of Sample	///		
Rm @ Meas. Temp	///		
Rmf @ Meas. Temp	///		
Rmc @ Meas. Temp	///		
Source of Rmf / Rmc	///		
Rm @ BHT	///		
Time Circulation Stopped	11:00 A.M.		
Time Logger on Bottom	1:15 P.M.		
Maximum Recorded Temperature	100 DEG F		
Equipment Number	T697		
Location	Trinidad		
Recorded By	J. Cappellucci		
Witnessed By	Mr. Dalton King		

<<< Fold Here >>>

All interpretations are opinions based on inferences from electrical or other measurements and we cannot and do not guarantee the accuracy or correctness of any interpretation, and we shall not, except in the case of gross or willful negligence on our part, be liable or responsible for any loss, costs, damages, or expenses incurred or sustained by anyone resulting from any interpretation made by any of our officers, agents or employees. These interpretations are also subject to our general terms and conditions set out in our current Price Schedule.

### Comments

#### Well Directions:

Lorencito, take door # 6 to top of hill, stay on main road past trash dumpster, stay straight, at Y stay left, stay on main road, at beige tank stay right, at big rocks take left, go straight up hill, past 3 locations, take hard right, pass one location on top of hill, follow road down, dead end on location.



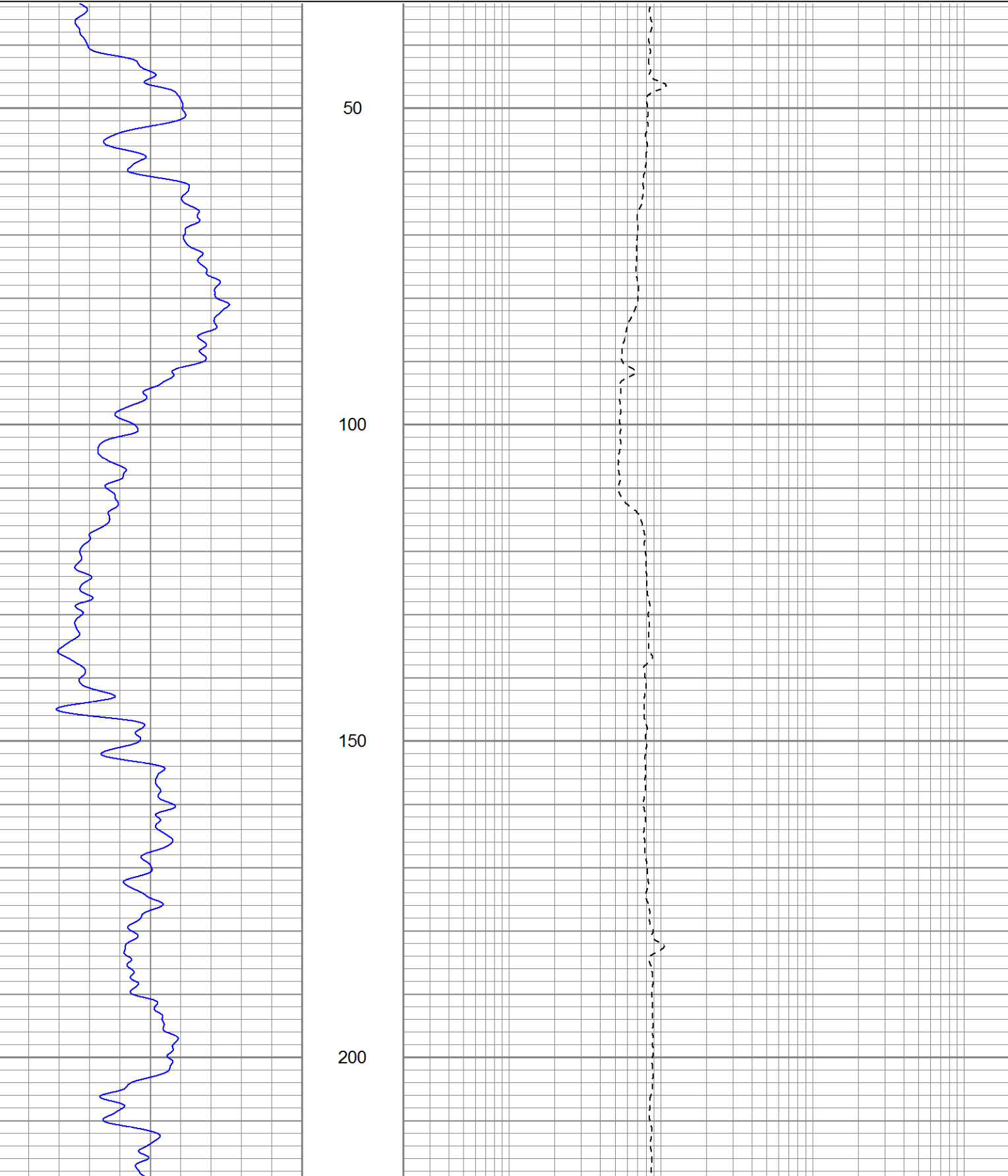
**SUPERIOR**

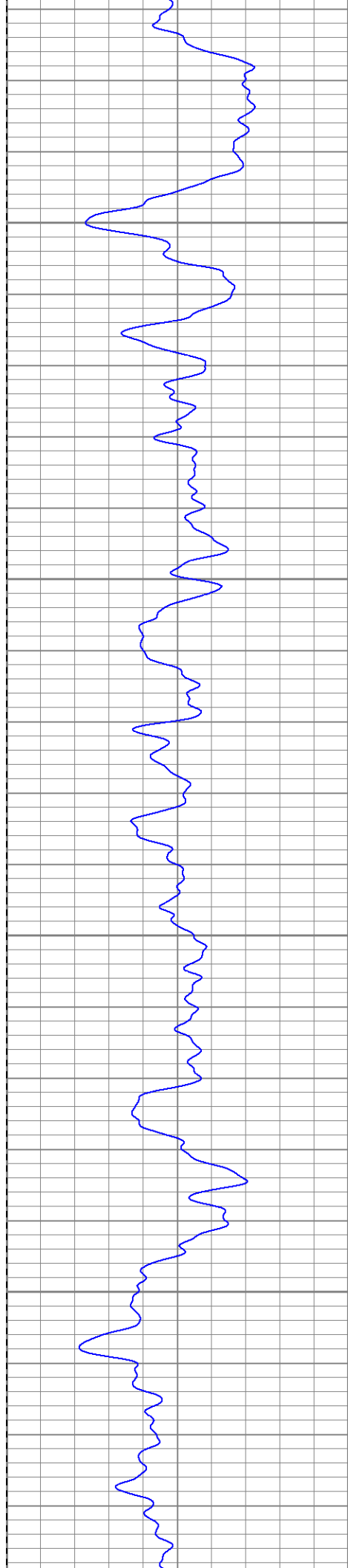
Black Lick, Pa.  
Mercer, Pa.  
Wooster, Oh.  
Cleveland, Ok.  
Trinidad, Co.

# Main Pass

Database File: xtohr0112.db  
Dataset Pathname: pass2.1  
Presentation Format: dil  
Dataset Creation: Wed Mar 04 14:56:27 2009 by Calc Open-Cased 071220  
Charted by: Depth in Feet scaled 1:240

0	GR (GAPI)	200	0.2	RILM (Ohm-m)	2000
0	SP (mV)	200	0.2	RILD (Ohm-m)	2000
			0.2	RLL3 (Ohm-m)	2000



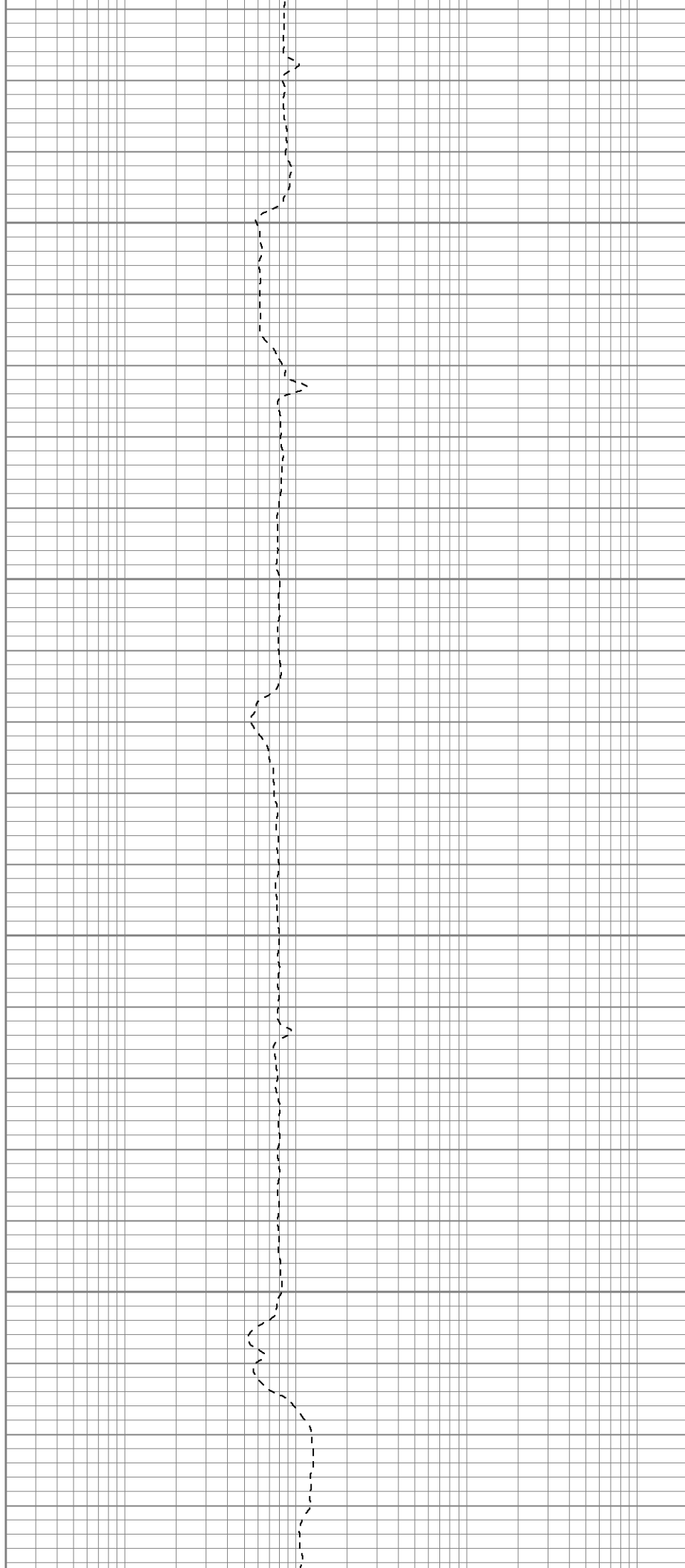


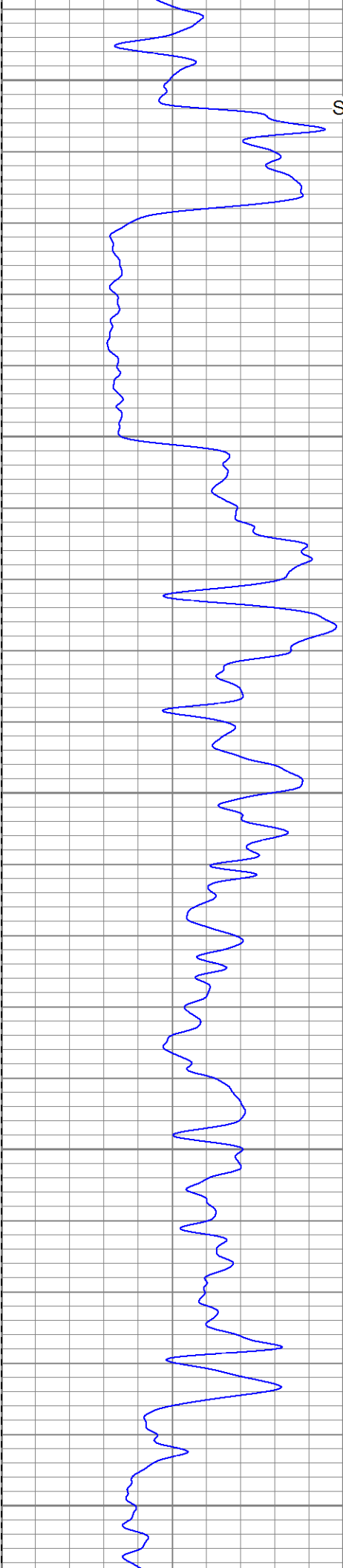
250

300

350

400





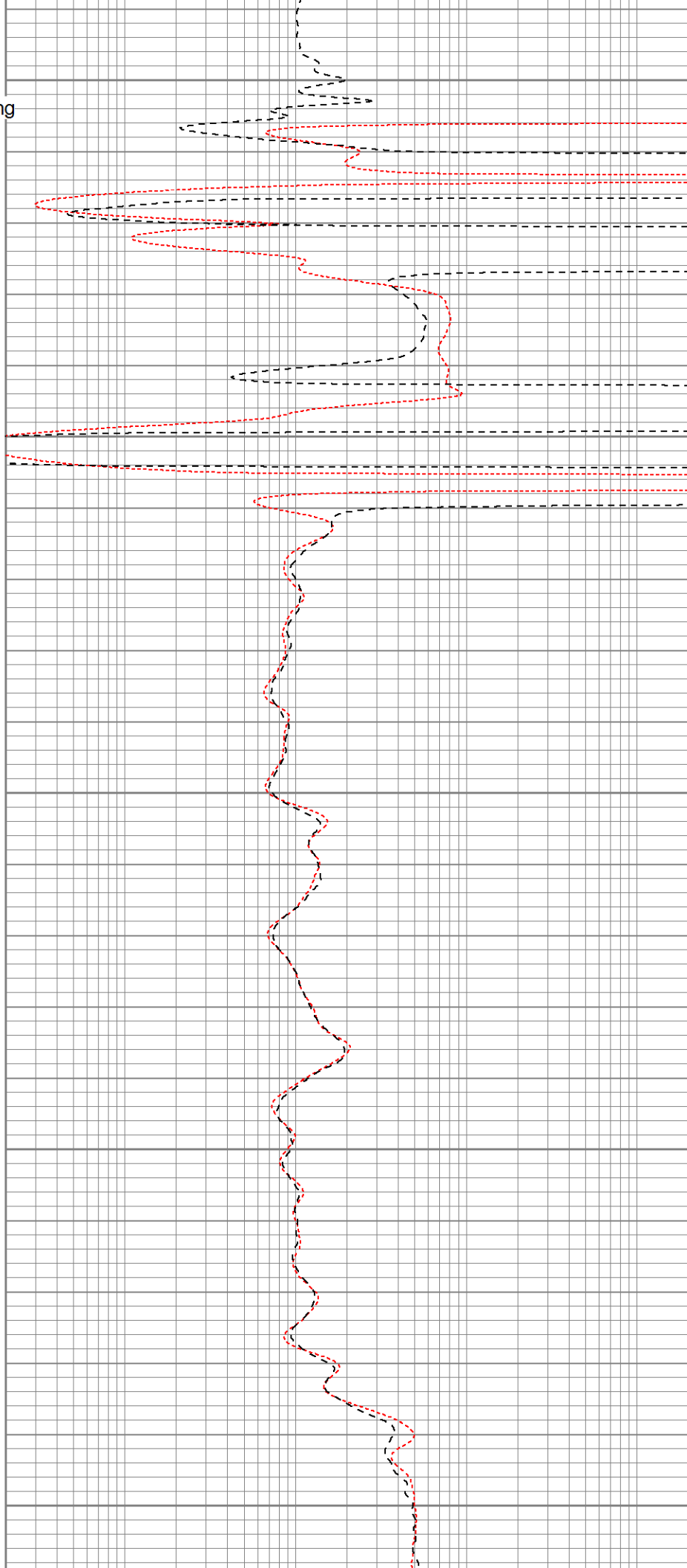
450  
Surface Casing

500

550

600

650





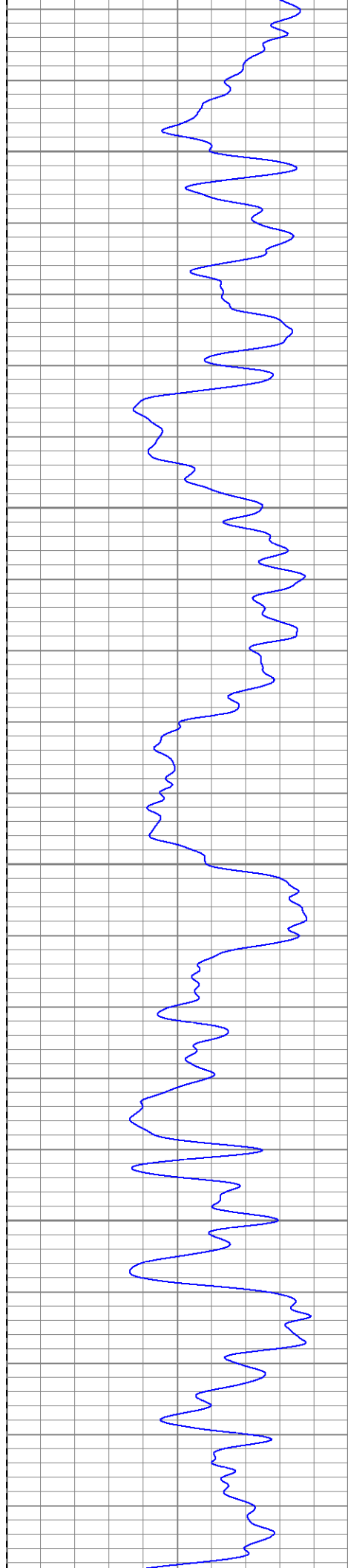
700

750

800

850



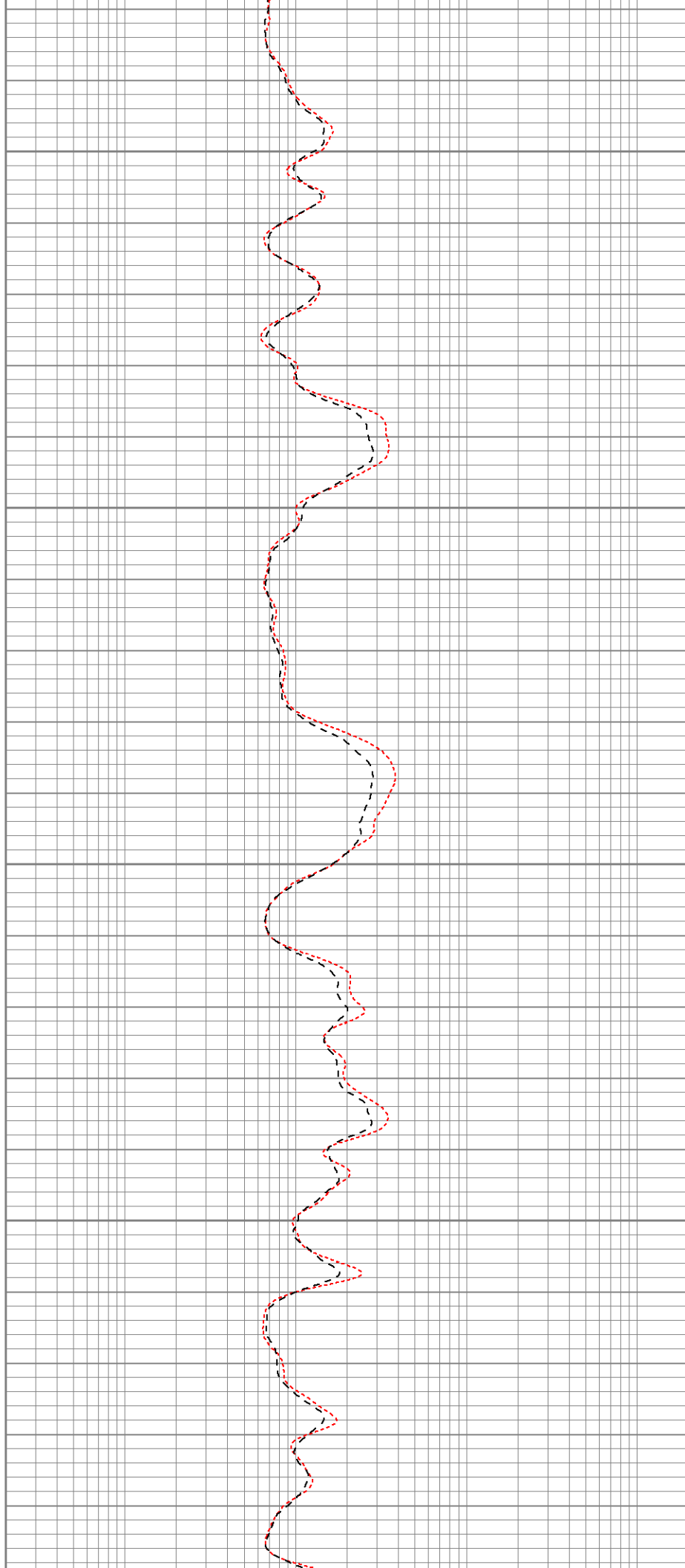


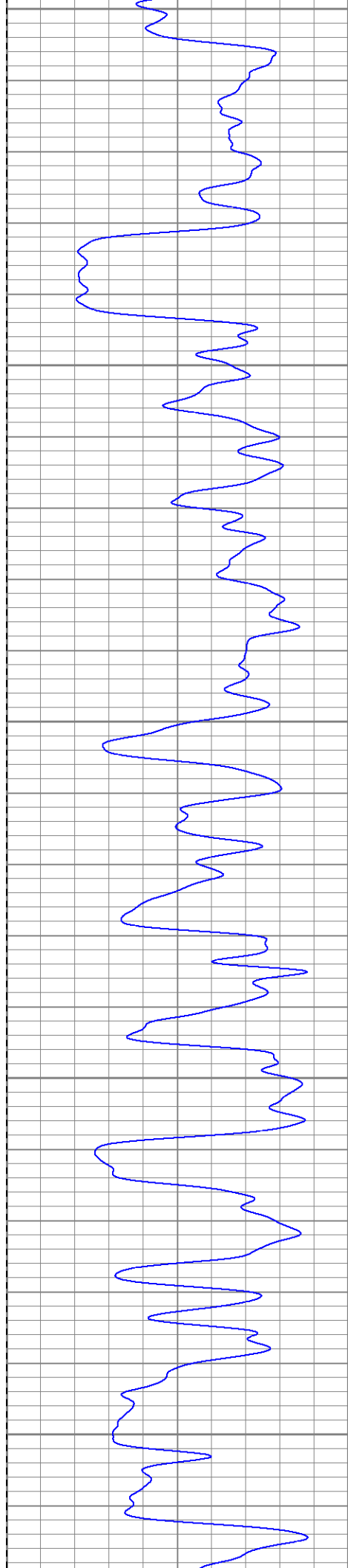
900

950

1000

1050





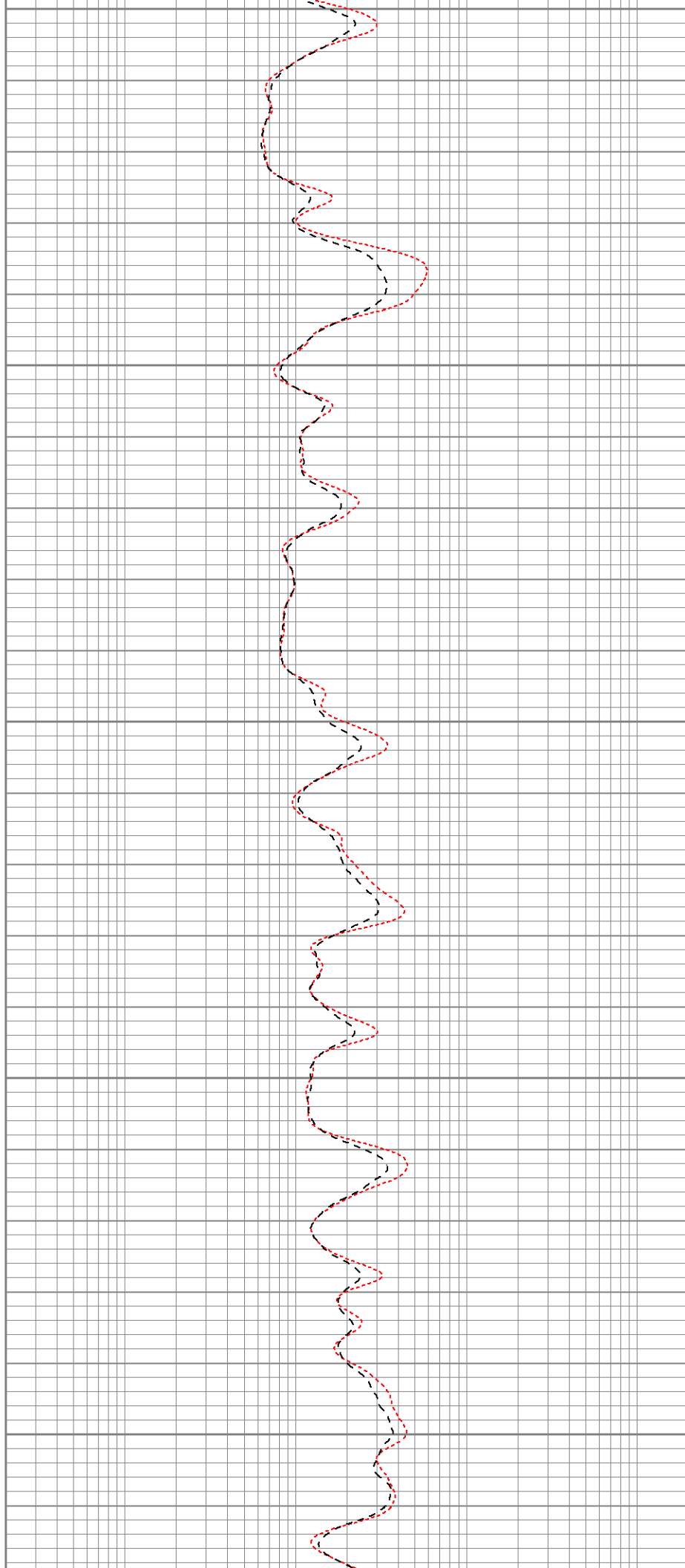
1100

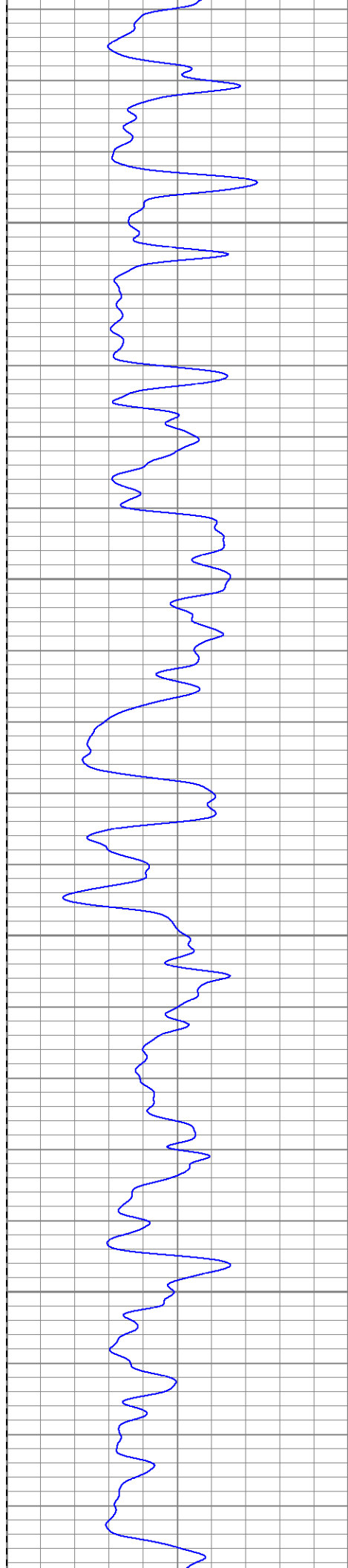
1150

1200

1250

1300



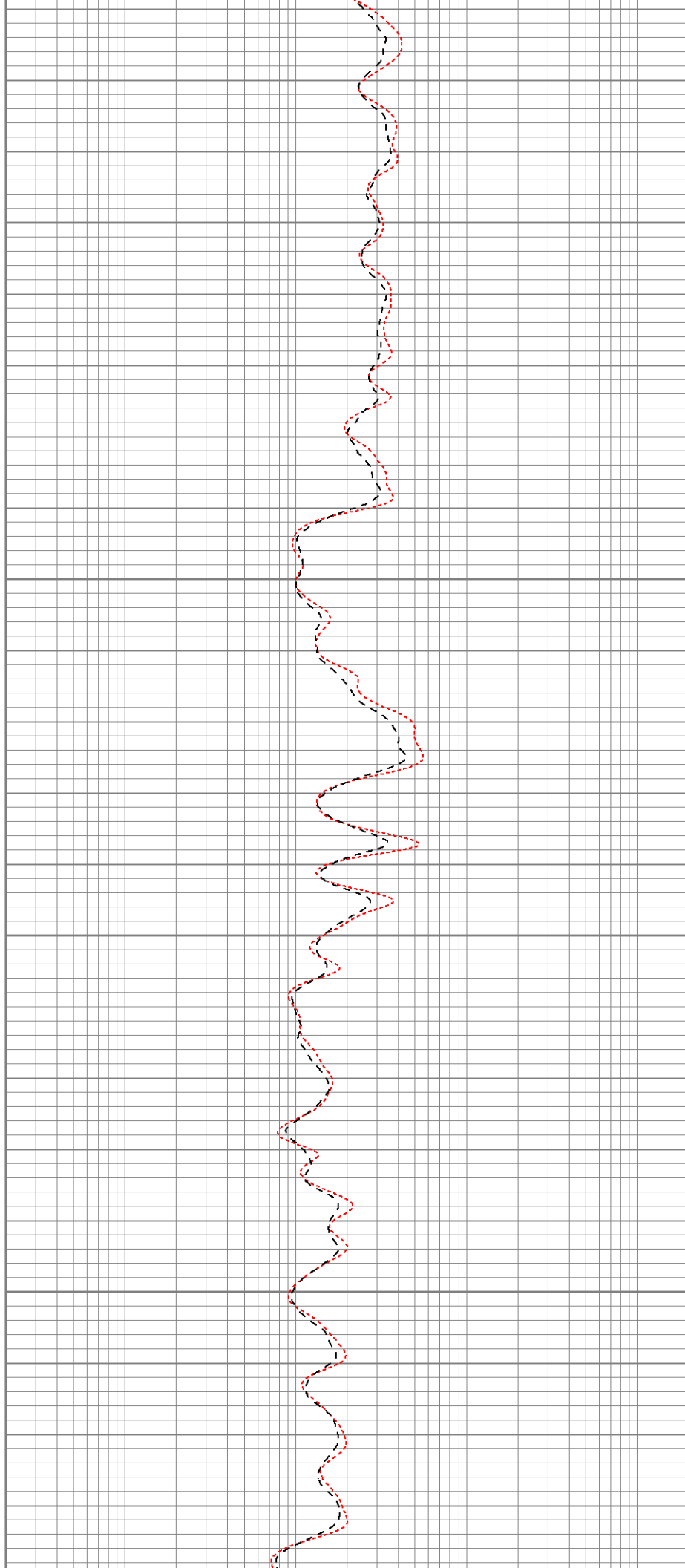


1350

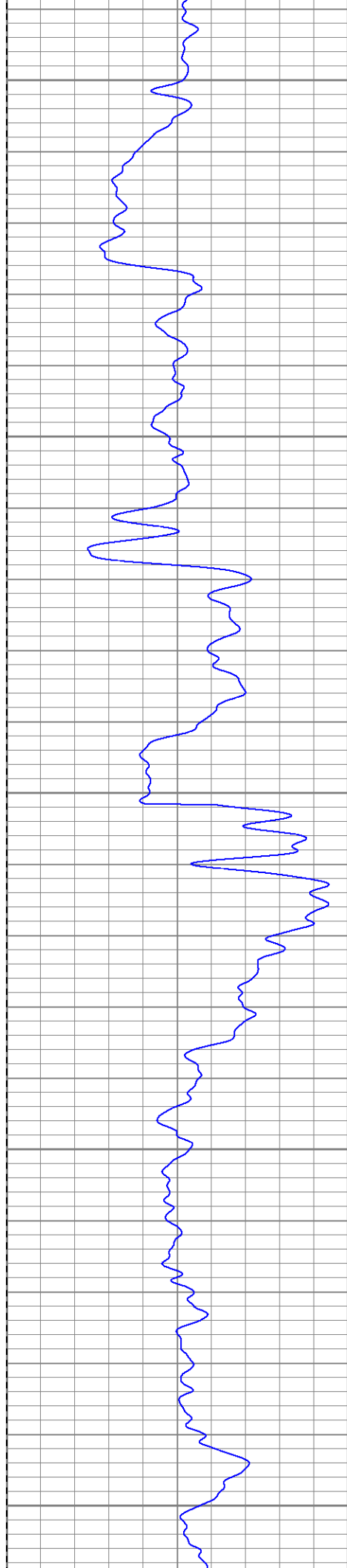
1400

1450

1500







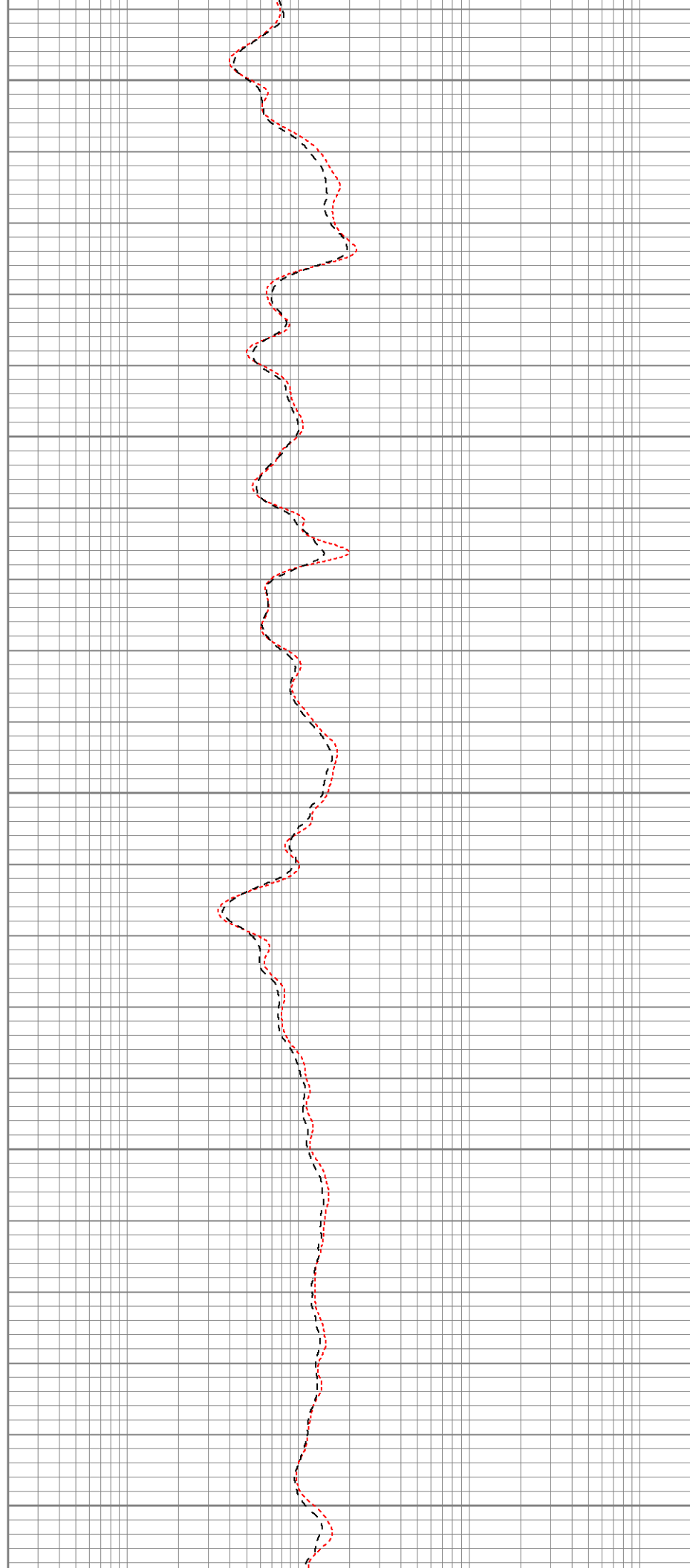
1550

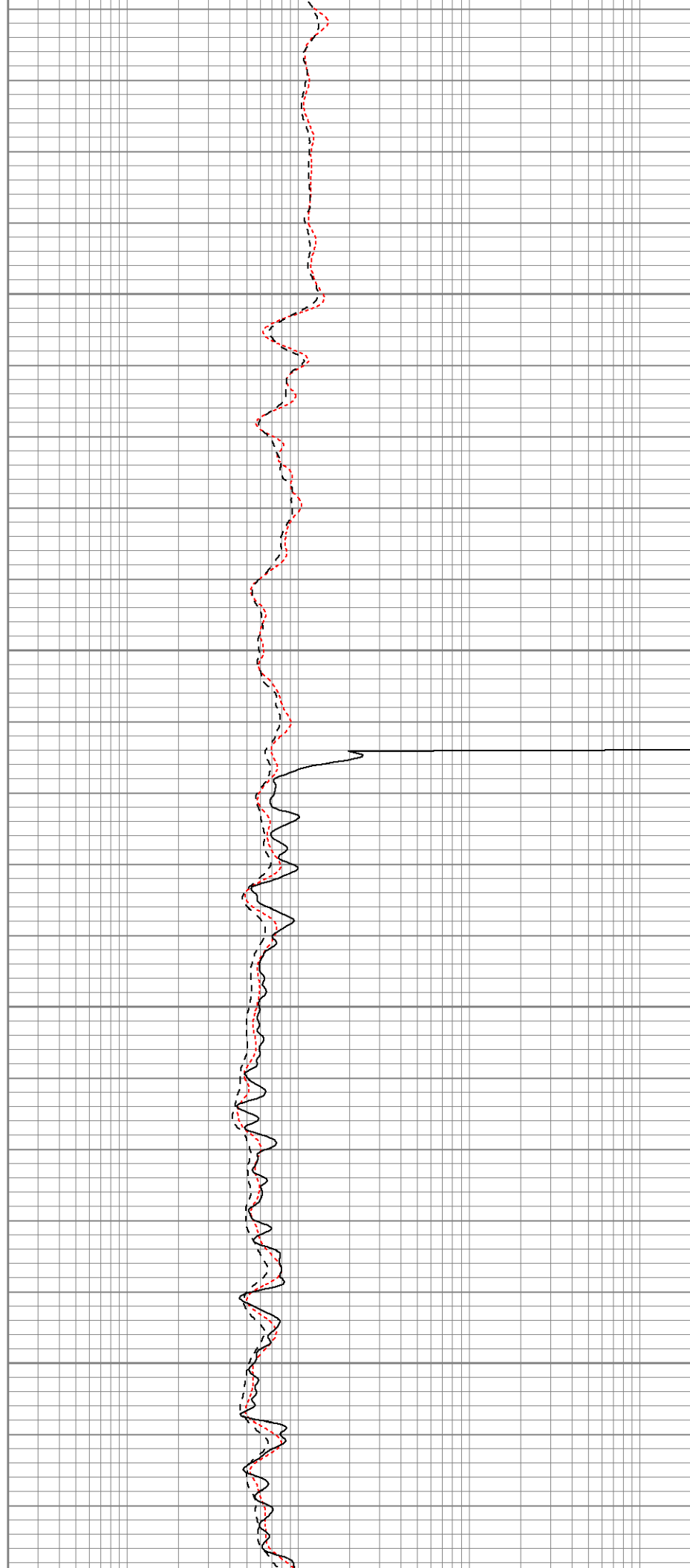
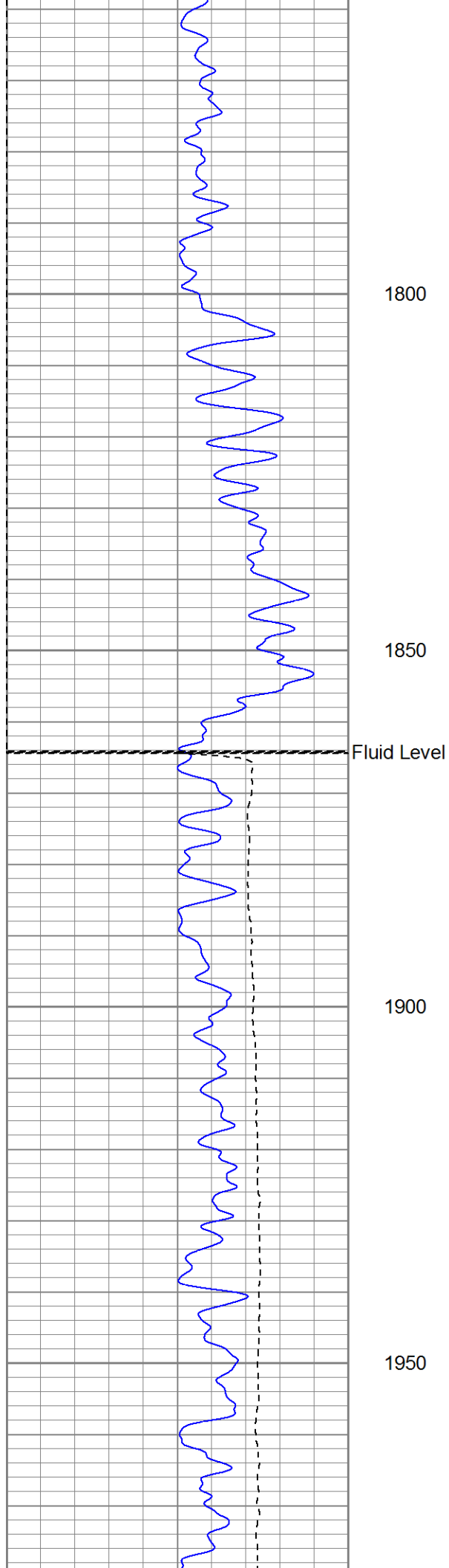
1600

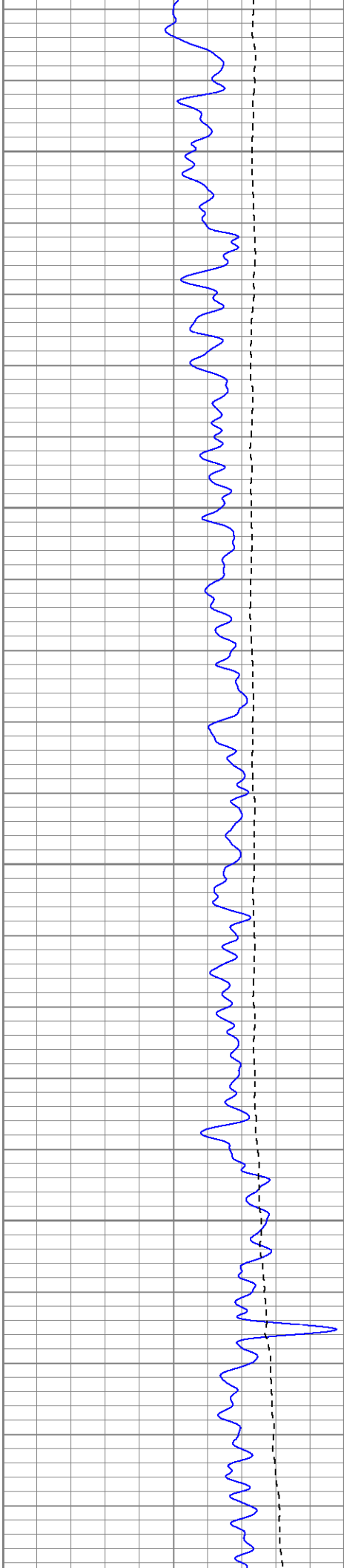
1650

1700

1750





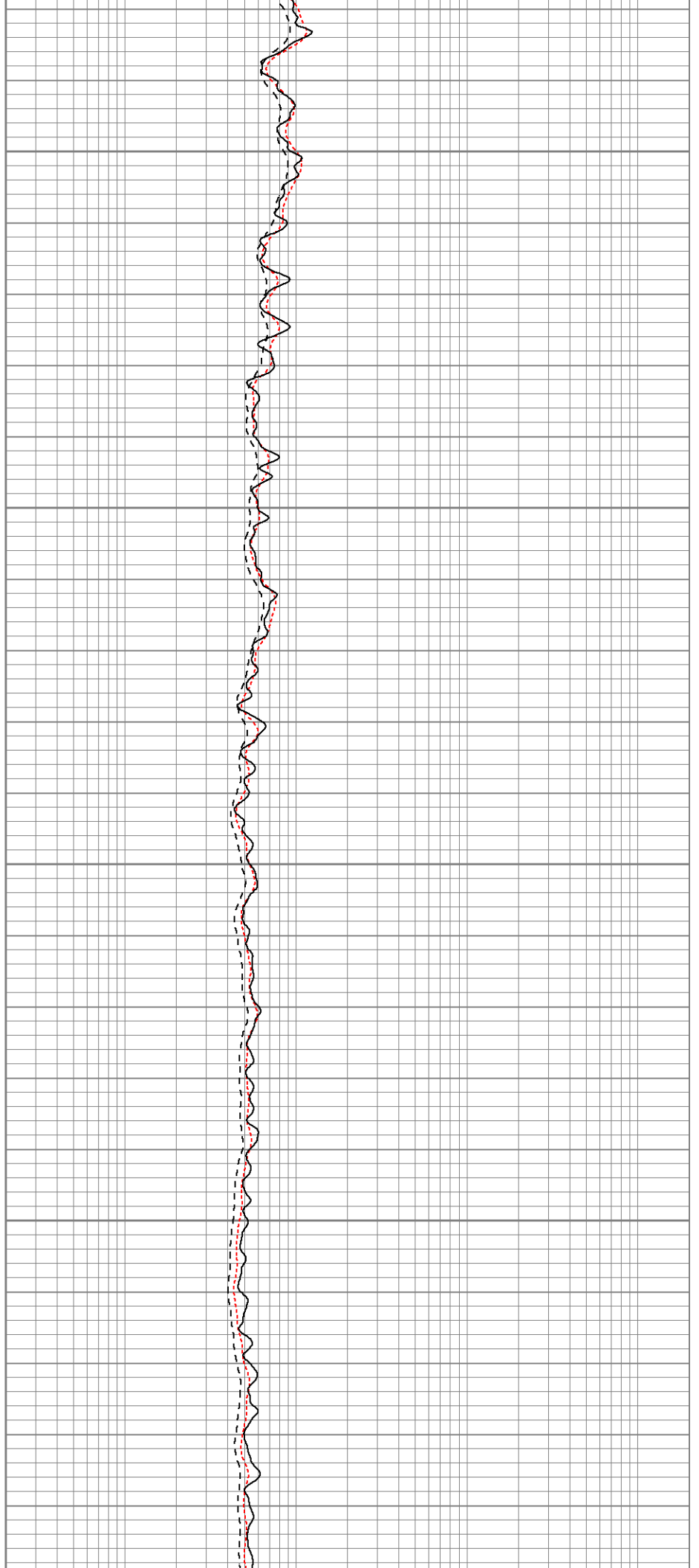


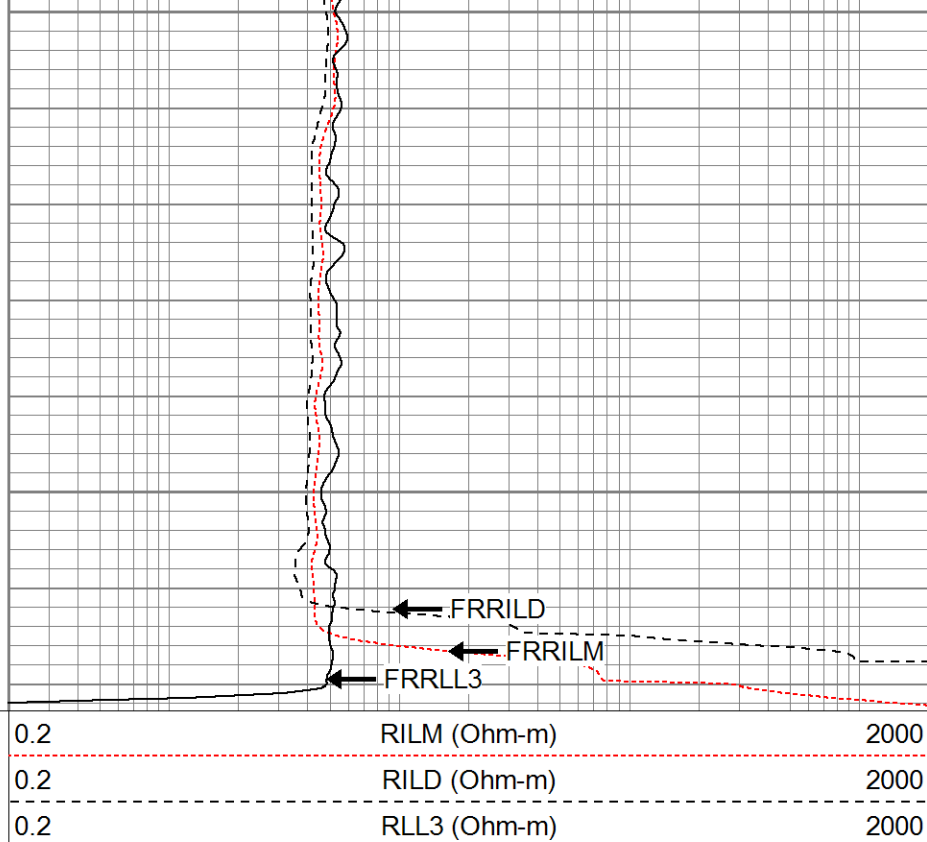
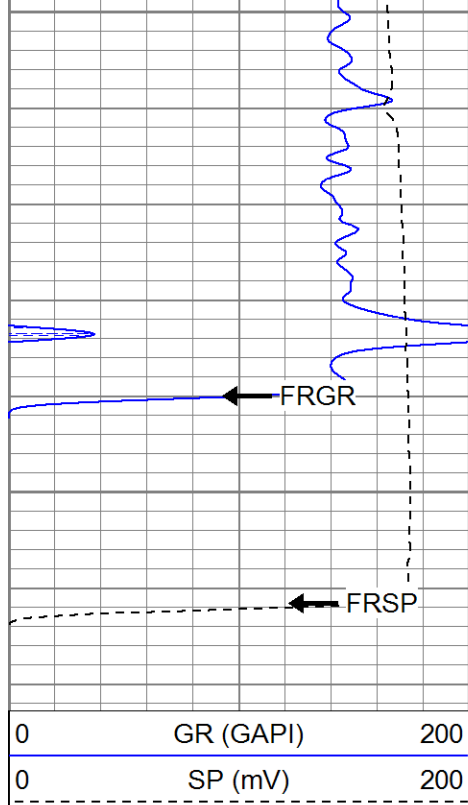
2000

2050

2100

2150





**SUPERIOR**

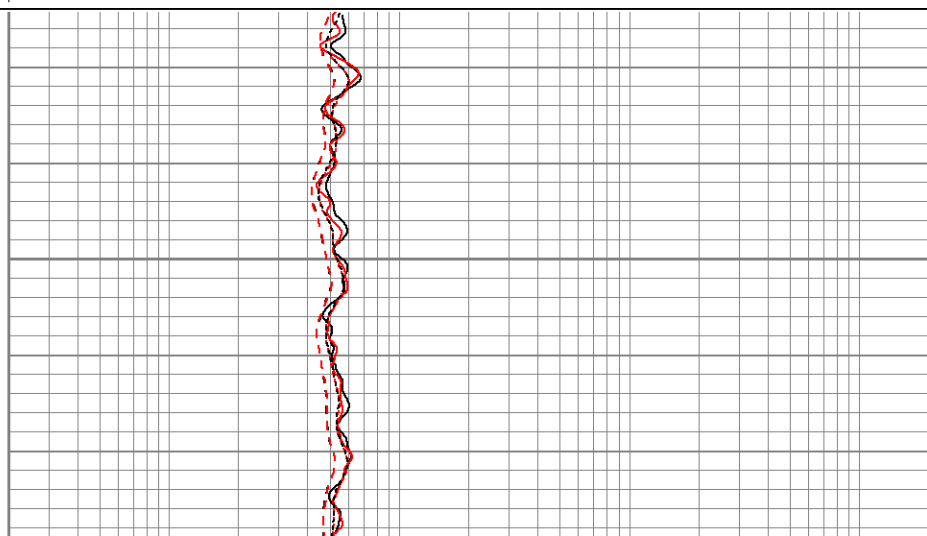
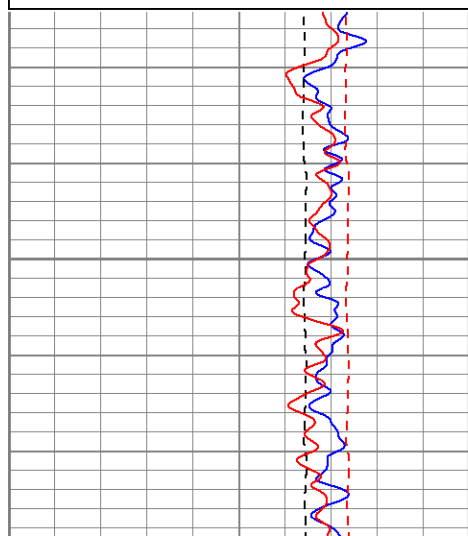
Black Lick, Pa.  
Mercer, Pa.  
Wooster, Oh.  
Cleveland, Ok.  
Trinidad, Co.

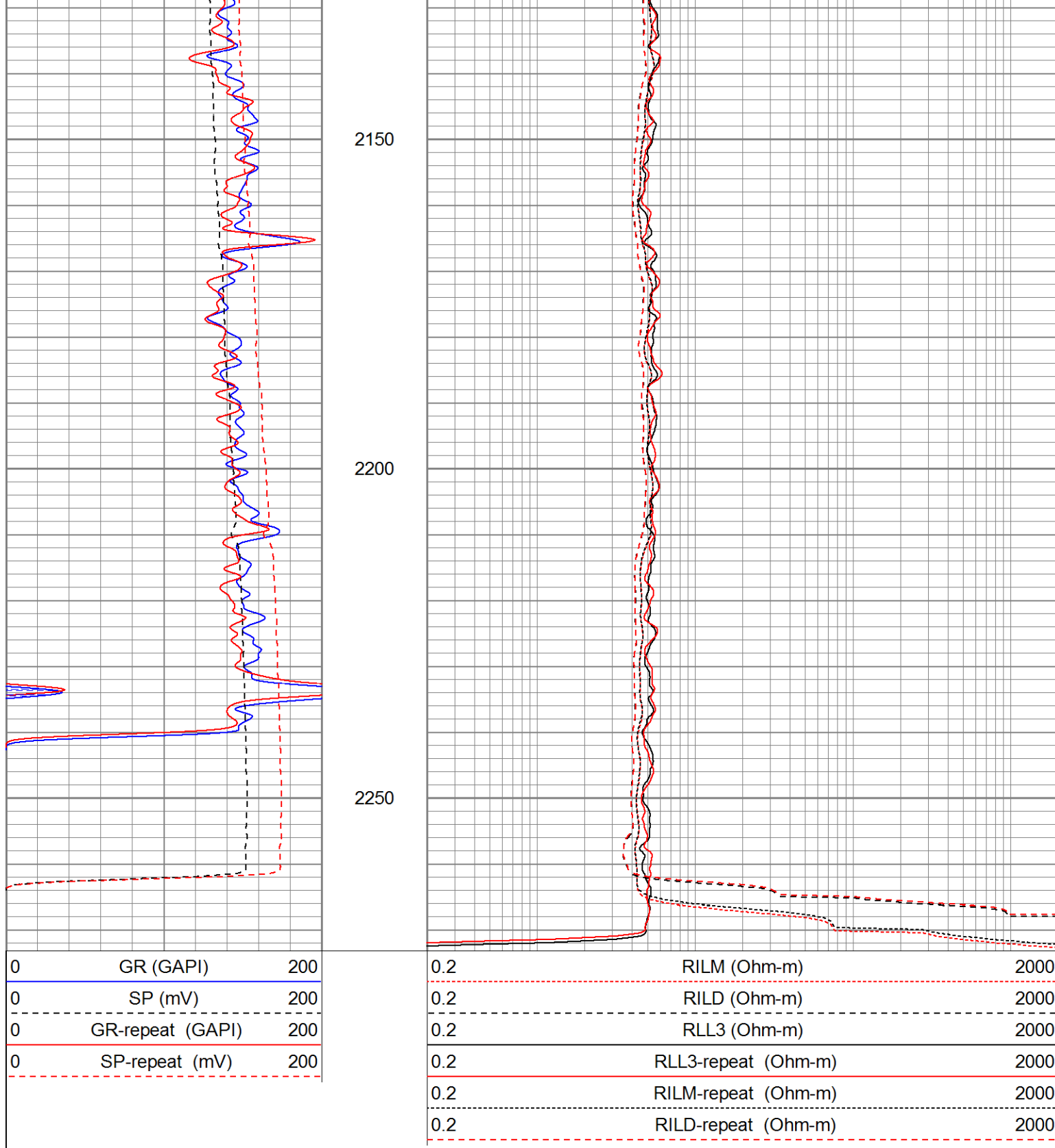
# Repeat Section

Database File: xtohr0112.db  
Dataset Pathname: pass1.1  
Presentation Format: dil  
Dataset Creation: Wed Mar 04 14:26:09 2009 by Calc Open-Cased 071220  
Charted by: Depth in Feet scaled 1:240

0	GR (GAPI)	200
0	SP (mV)	200
0	GR-repeat (GAPI)	200
0	SP-repeat (mV)	200

0.2	RILM (Ohm-m)	2000
0.2	RILD (Ohm-m)	2000
0.2	RLL3 (Ohm-m)	2000
0.2	RLL3-repeat (Ohm-m)	2000
0.2	RILM-repeat (Ohm-m)	2000
0.2	RILD-repeat (Ohm-m)	2000





### Calibration Report

Database File: xtohr0112.db  
Dataset Pathname: pass1  
Dataset Creation: Wed Mar 04 13:16:17 2009 by Log Open-Cased 071220

### Dual Induction Calibration Report

Serial-Model: 5375-G  
Surface Cal Performed: Tue Mar 03 12:05:55 2009  
Downhole Cal Performed: Wed Mar 04 13:13:25 2009

Surface Calibration								
Loop:	Readings			References			Results	
	Air	Loop		Air	Loop		m	b
Deep	0.002	0.621	V	0.000	500.000	mmho-m	807.905	-1.800
Medium	0.003	0.743	V	0.000	600.000	mmho-m	811.317	-2.798
Internal:	Zero	Cal		Zero	Cal		m	b
Deep	0.002	0.621	V	0.000	500.000	mmho-m	807.937	-1.938
Medium	0.004	0.743	V	0.000	550.000	mmho-m	744.131	-2.816

Downhole Calibration								
Internal:	Readings			References			Results	
	Zero	Cal		Zero	Cal		m	b
Deep	-0.868	498.274	mmho-m	0.138	500.118	mmho-m	1.002	1.007
Medium	0.513	549.542	mmho-m	0.250	549.936	mmho-m	1.001	-0.264
Shallow	2.505	0.010	V	500.000	2.000	Ohm-m	124.000	0.000

Compensated Density Calibration Report								
--	--	--	--	--	--	--	--	--

Serial-Model:				2501DHT-DHT				
Source / Verifier:				/				
Master Calibration Performed:				Tue Mar 03 14:30:18 2009				

Master Calibration								
	Density			Far Detector		Near Detector		
Magnesium	1.710	g/cc		767.26		303.43	cps	
Aluminum	2.590	g/cc		171.91		210.81	cps	
Spine Angle = 76.32				Density/Spine Ratio = 0.572				
	Size			Reading				
Small Ring	8.00	in		6217.62				
Large Ring	14.00	in		10357.00				

Gamma Ray Calibration Report								
------------------------------	--	--	--	--	--	--	--	--

Serial Number:			2001					
Tool Model:			OH					
Performed:			Thu Feb 26 13:18:39 2009					
Calibrator Value:			1.0			GAPI		
Background Reading:			0.0			cps		
Calibrator Reading:			1.0			cps		
Sensitivity:			0.2500			GAPI/cps		

Neutron Calibration Report								
----------------------------	--	--	--	--	--	--	--	--

Serial Number:			5108					
Tool Model:			PROBE					
Performed:			Thu Feb 26 13:38:03 2009					
Calibrator Value:			1			NAPI		
Calibrator Reading:			1			cps		

Sensor	Offset (ft)	Schematic	Description	Len (ft)	OD (in)	Wt (lb)
NEU	37.85		None	0.75	1.50	5.00
			NEU-PROBE (5108) Probe Epithermal	4.92	3.63	85.00
GR	32.32		GR-OH (2001) 2001	3.56	3.25	40.00
LSD DCAL SSD HEADVOLT	23.78		CDL-DHT (2501DHT) Digital High Temp CDL Tool	9.69	4.00	201.00
	23.49					
	23.24					
	21.47					
CILD SP	10.60 10.60		DIL-G (5375) Gearhart	21.47	4.00	345.00
CILM	6.89					
RLL3	1.70					
Dataset: xtohr0112.db: field/well/run1/pass1 Total Length: 40.39 ft Total Weight: 676.00 lb O.D. 4.00 in						