



SUPERIOR
WELL SERVICES
Black Lick, Pa.
Mercer, Pa.
Wooster, Oh.
Cleveland, Ok.
Trinidad, Co.

CEMENT BOND LOG

Company XTO Energy Inc.

Well Apache Canyon 03-13

Field Purgatorie River

County Las Animas State CO

Location: API # : 05 071 09571 00

SEC 03 TWP 34S RGE 67W

Permanent Datum Ground level Elevation 7546'

Log Measured From Ground Level

Drilling Measured From Ground Level

Date 7-30-08

Run Number One

Depth Driller 2200'

Depth Logger 2130'

Bottom Logged Interval 2126'

Top Log Interval Surface

Open Hole Size 7 7/8"

Type Fluid Water

Density / Viscosity ///

Max. Recorded Temp. 150 Deg F

Estimated Cement Top Surface

Time Well Ready ROA

Time Logger on Bottom 8:00 A.M.

Equipment Number T700

Location Trinidad

Recorded By K. Lucero

Witnessed By Mr. Travis Gourdin

Run Number Bit From To Size Weight From To

Casing Record Size Wgt/Ft Top Bottom

Surface String 8 5/8" 00 480'

Prot. String 00 00 NA

Production String 5.5" 00 2180'

Liner

<<< Fold Here >>>

All interpretations are opinions based on inferences from electrical or other measurements and we cannot and do not guarantee the accuracy or correctness of any interpretation, and we shall not, except in the case of gross or willful negligence on our part, be liable or responsible for any loss, costs, damages, or expenses incurred or sustained by anyone resulting from any interpretation made by any of our officers, agents or employees. These interpretations are also subject to our general terms and conditions set out in our current Price Schedule.

Comments

Well Directions:

First Bosque Entrance to Alamasito, follow main road left at AC 04-07 Location, drive through one location, next left to location



SUPERIOR
Black Lick, Pa.
Mercer, Pa.
Wooster, Oh.
Cleveland, Ok.
Trinidad, Co.

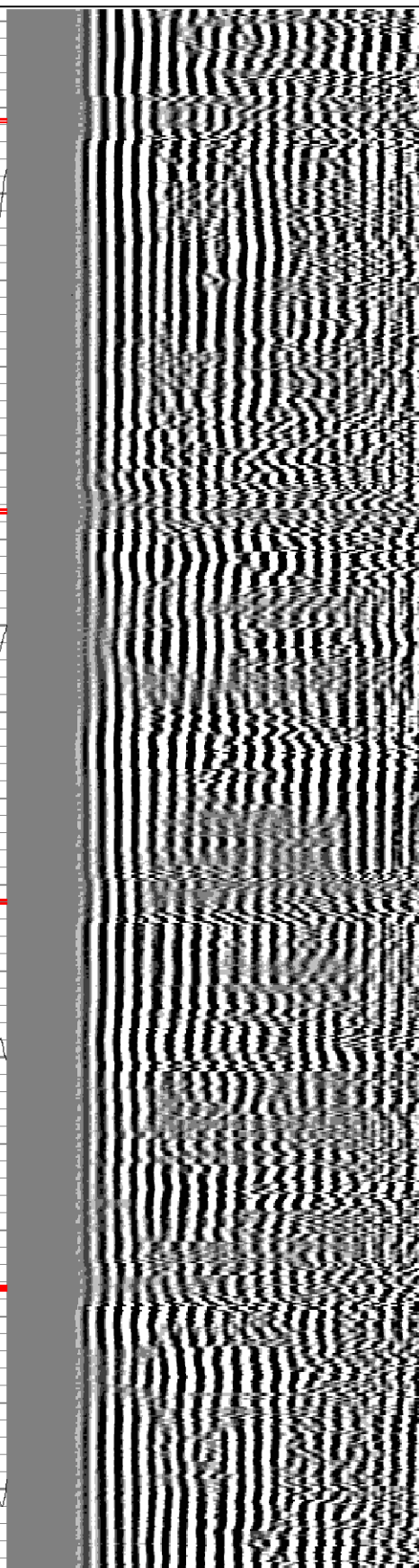
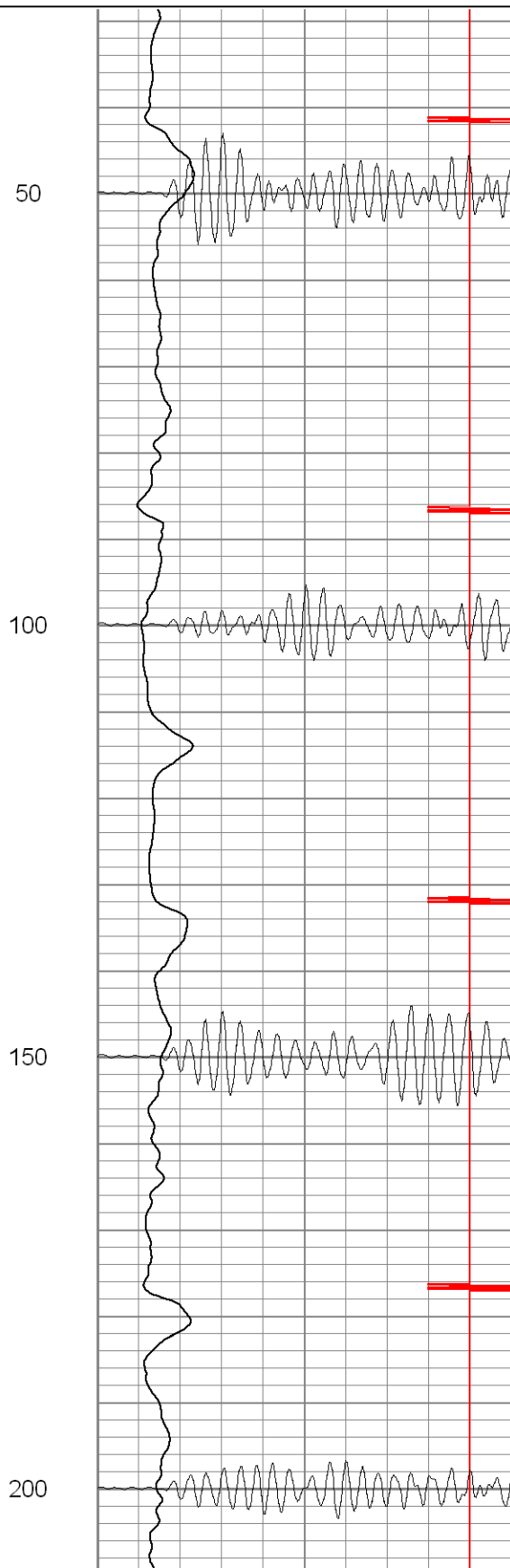
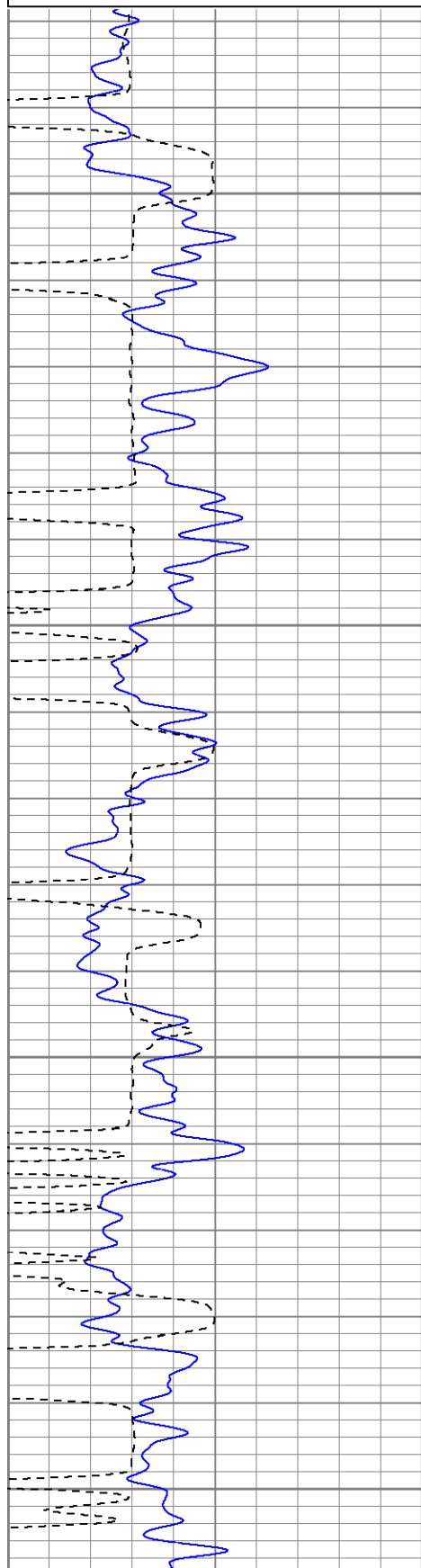
Main Pass 1000 PSI

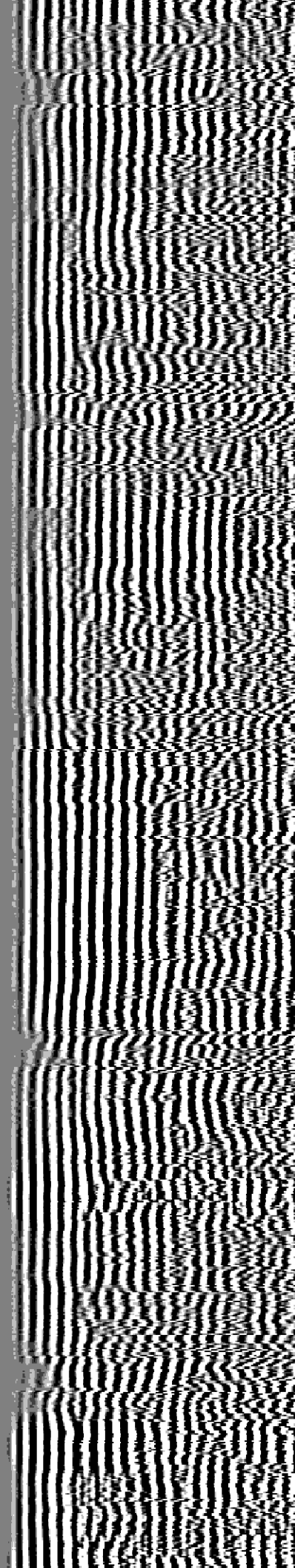
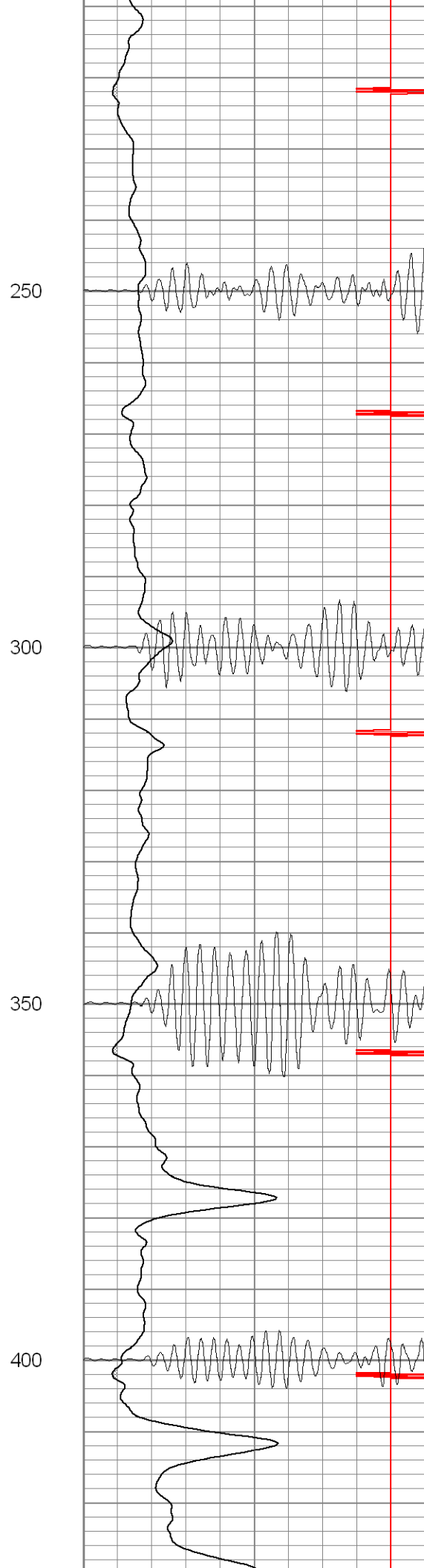
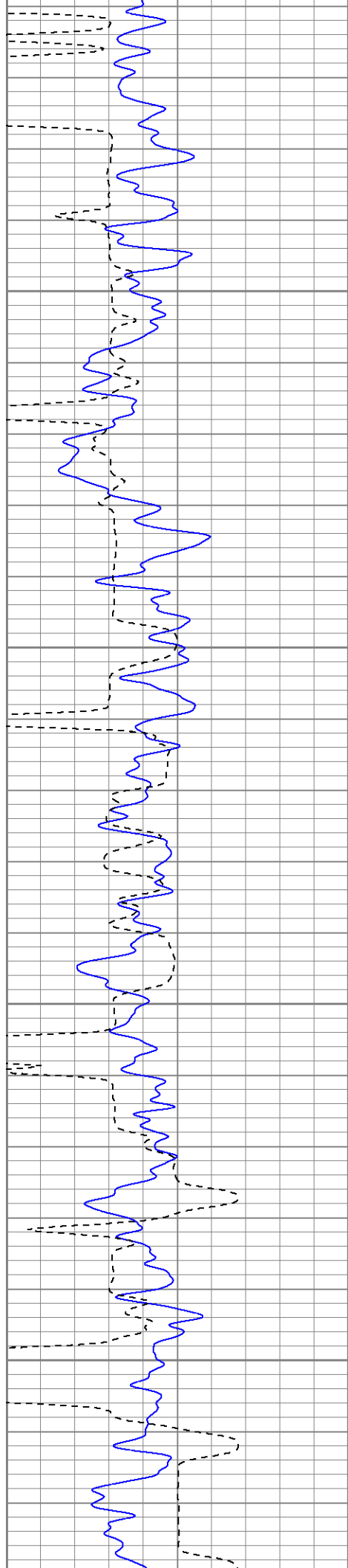
Database File: xtoac031373008b.db
Dataset Pathname: pass2
Presentation Format: cblrt
Dataset Creation: Wed Jul 30 08:18:51 2008 by Log Open-Cased 071220
Charted by: Depth in Feet scaled 1:240

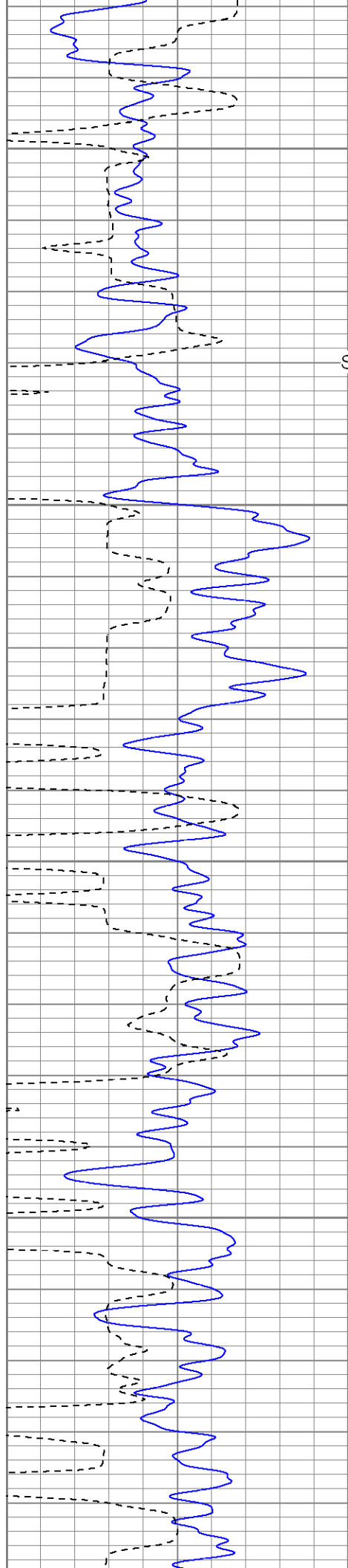
0	GR (GAPI)	200
400	TT3 (usec)	200
<hr/>		
200	GR (GAPI)	400

0	Amplitude (mV)	100
18	CCL	-2
<hr/>		
200	CBL5	1200

200 VDL 1200







Surface Casing

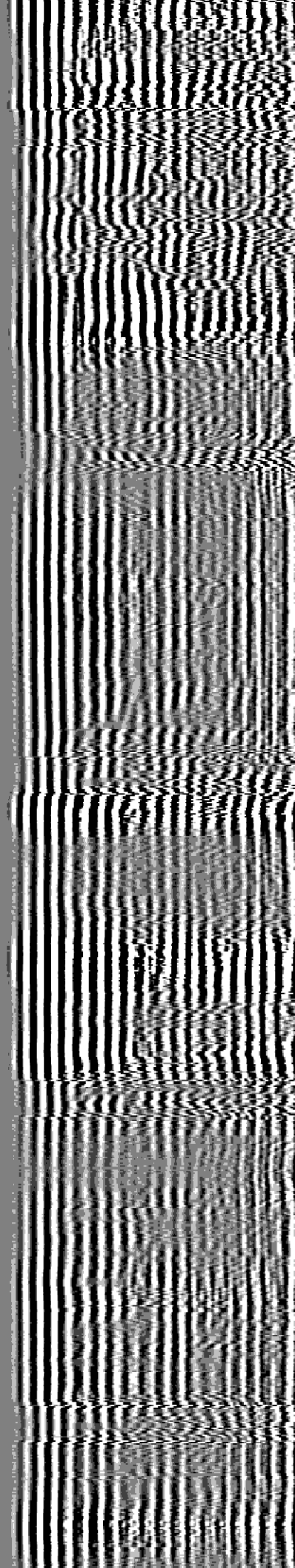
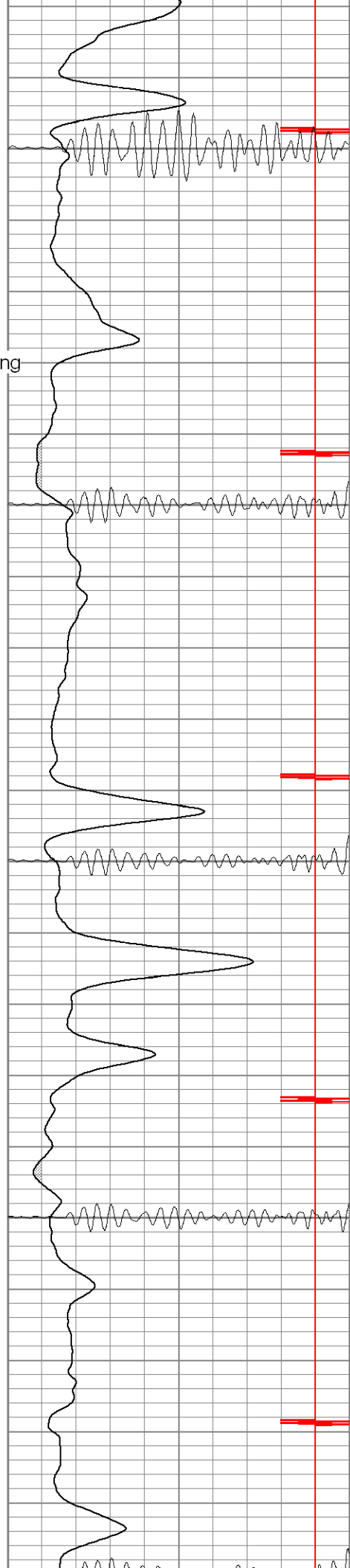
450

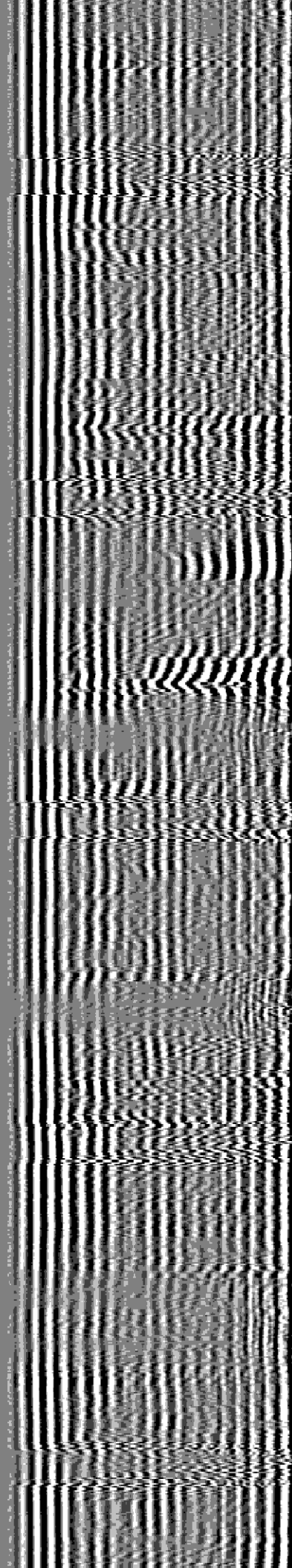
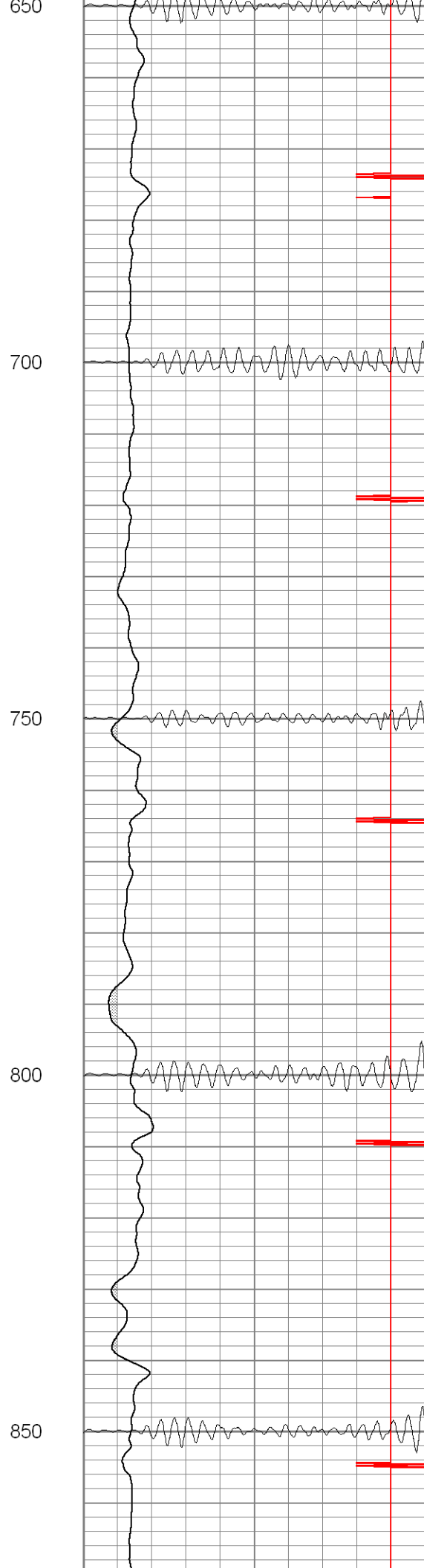
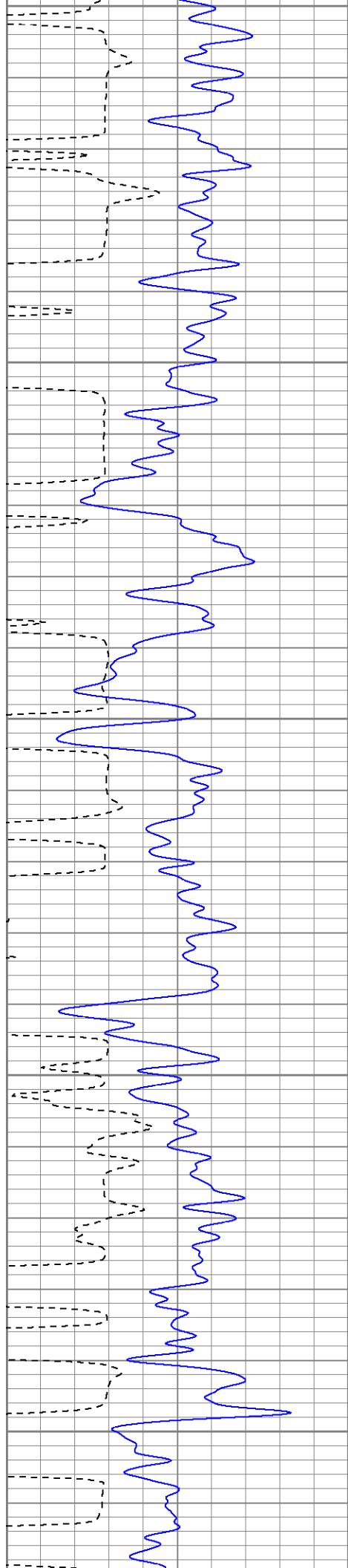
500

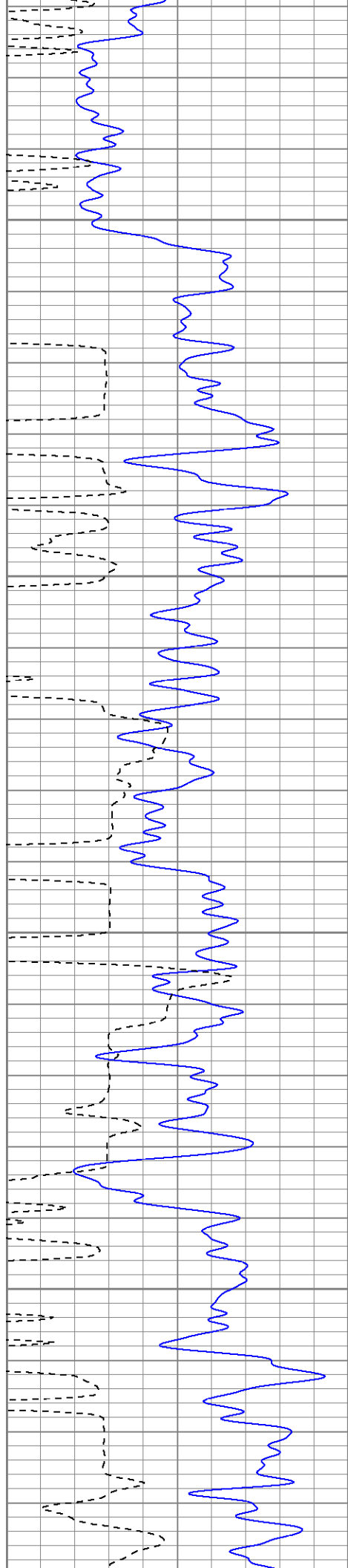
550

600

650





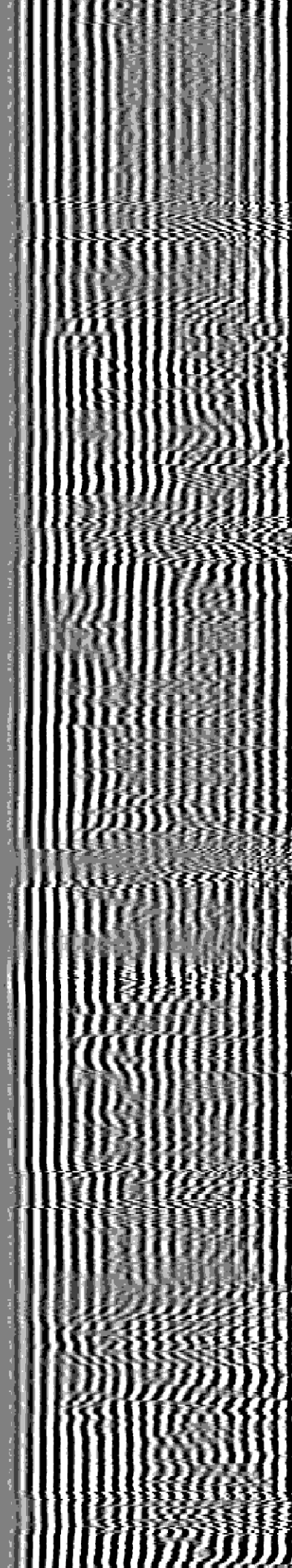
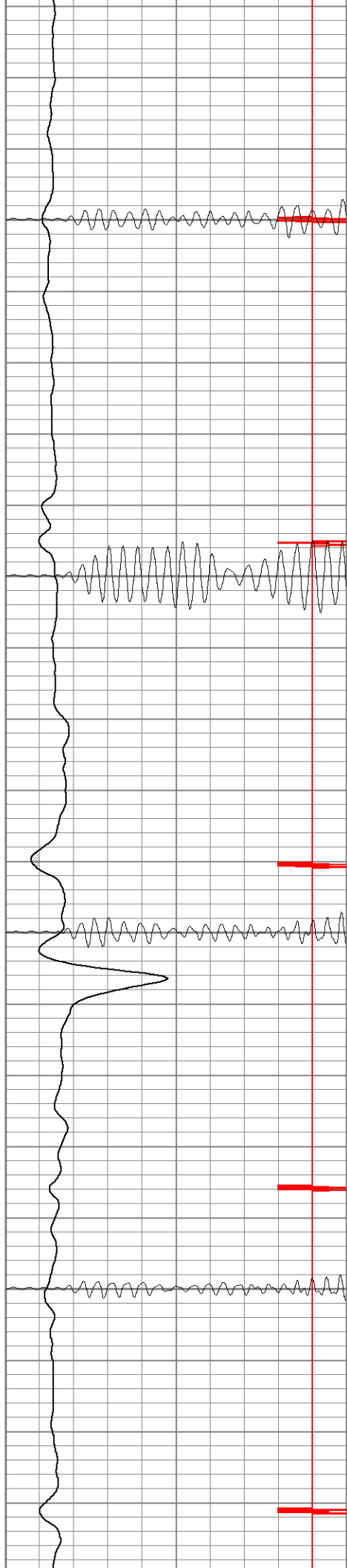


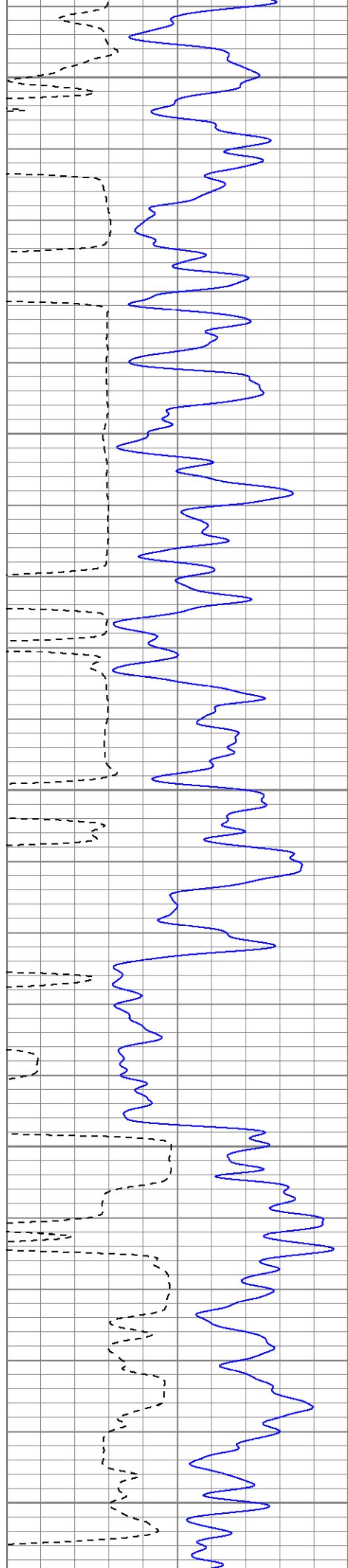
900

950

1000

1050





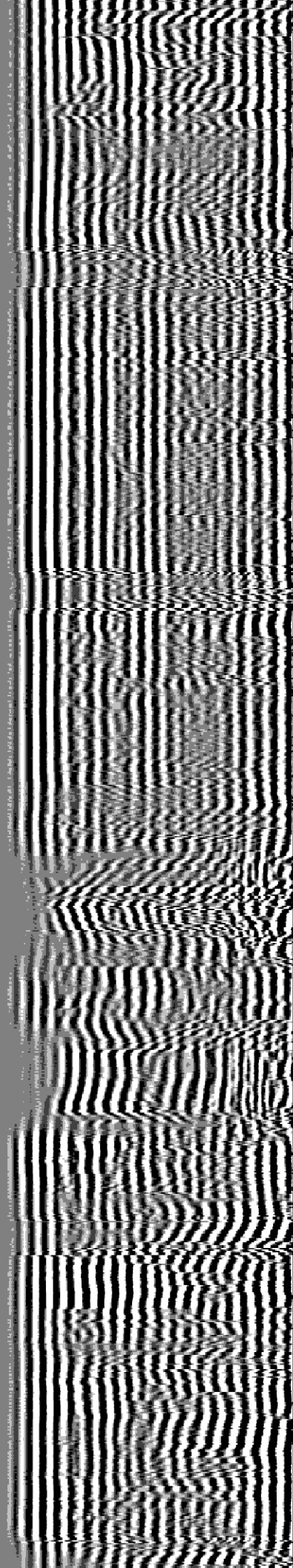
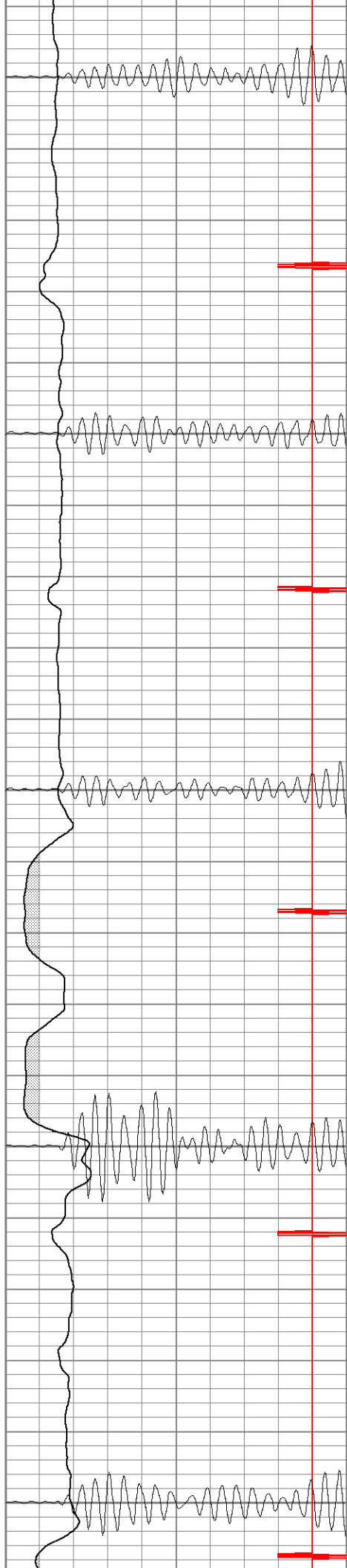
1100

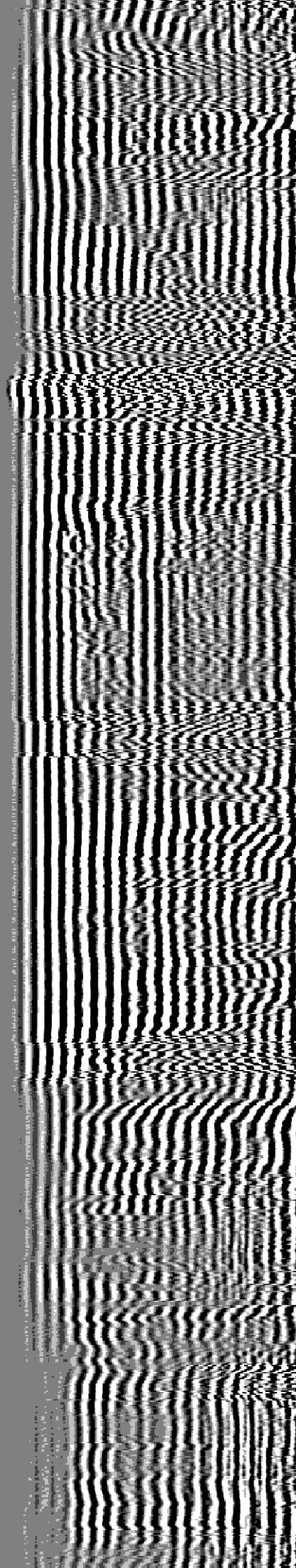
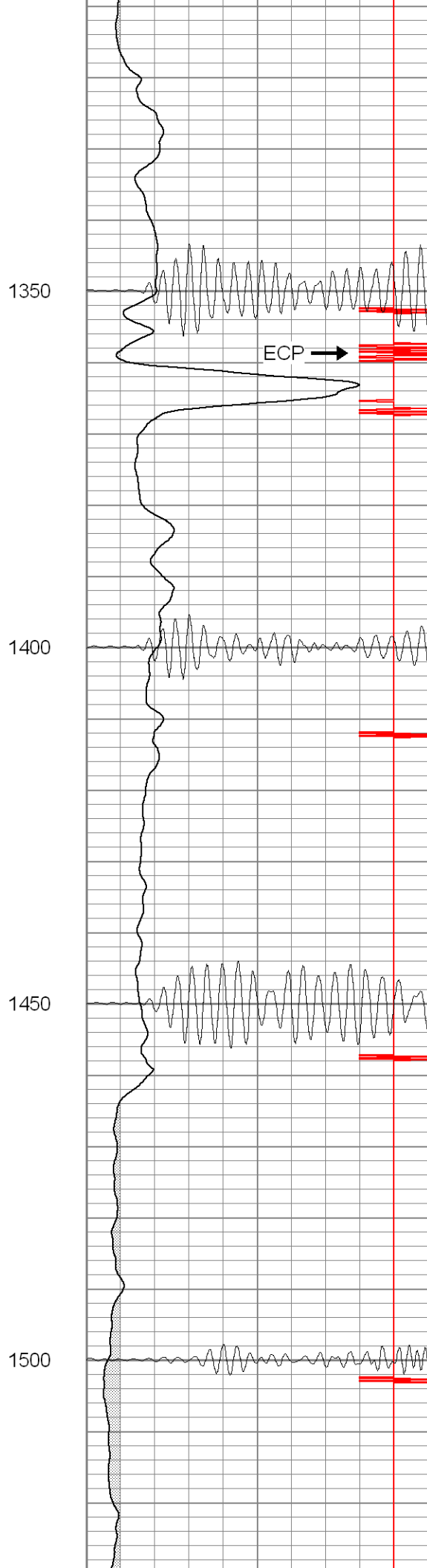
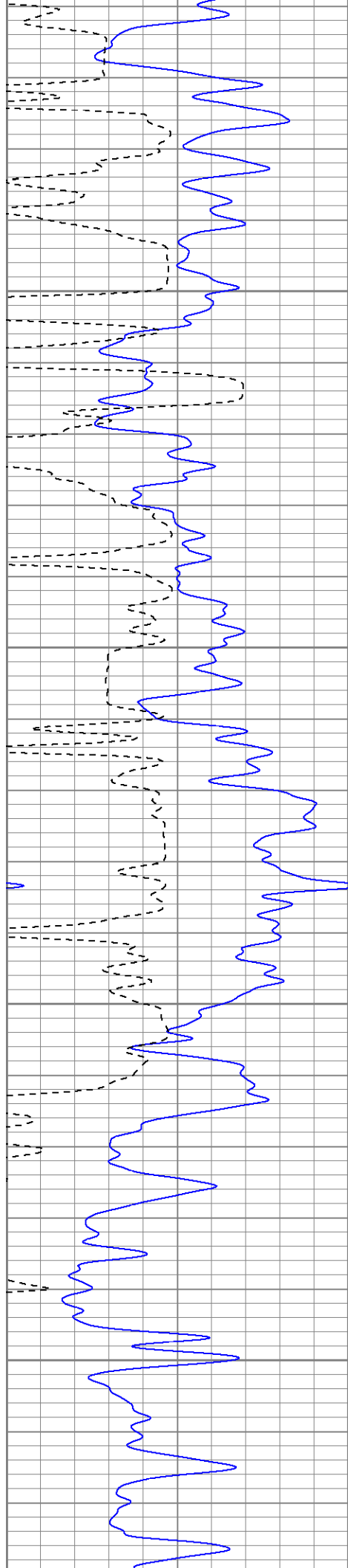
1150

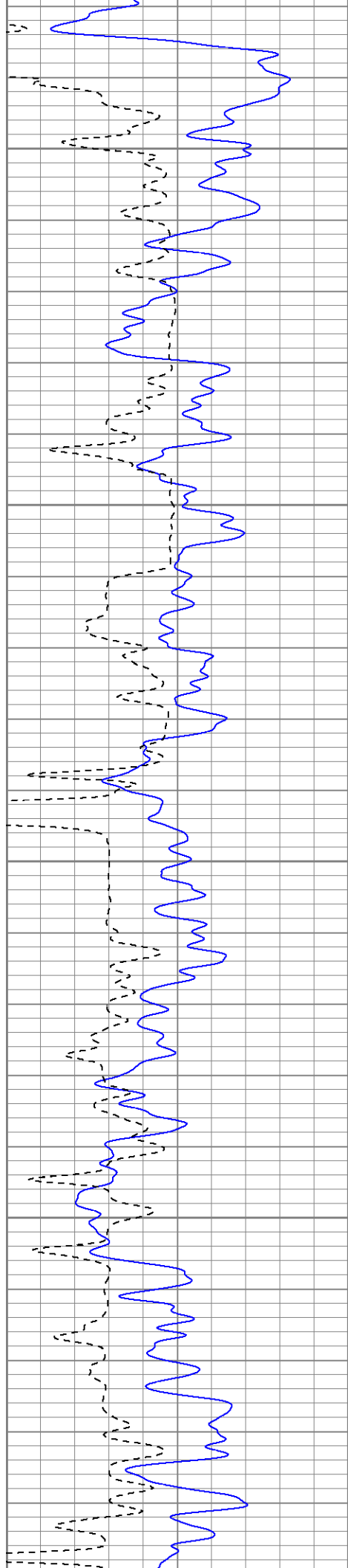
1200

1250

1300





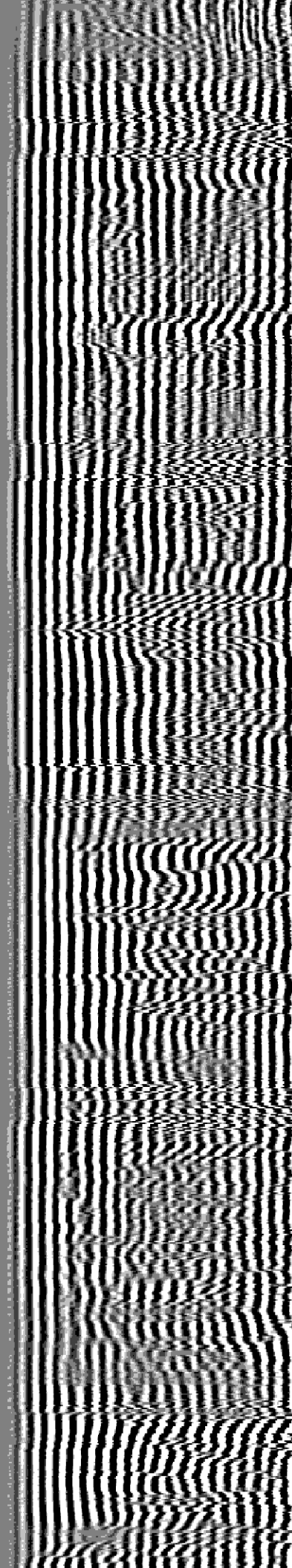
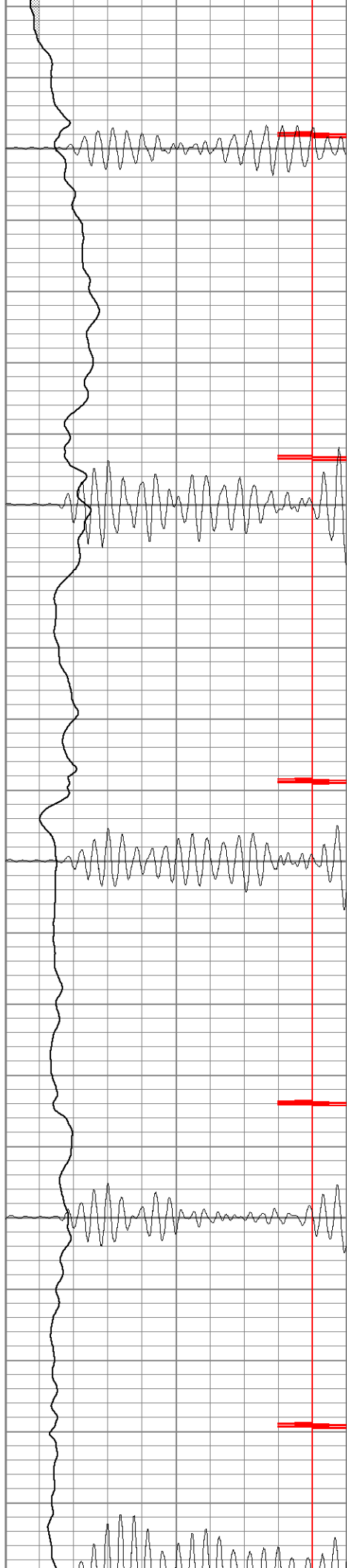


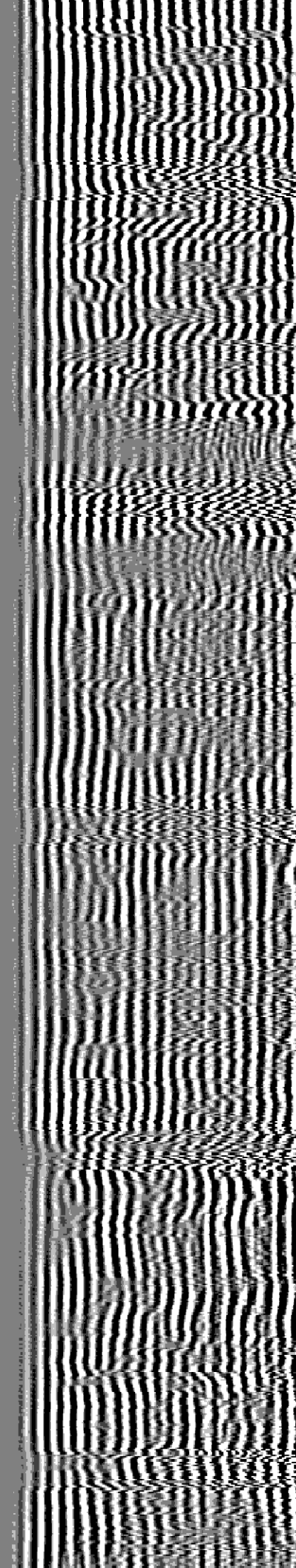
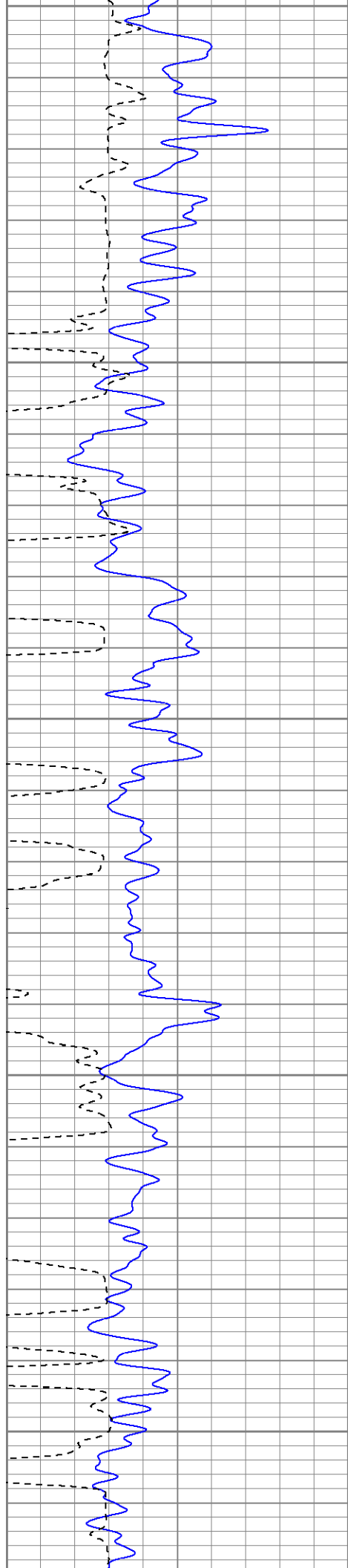
1550

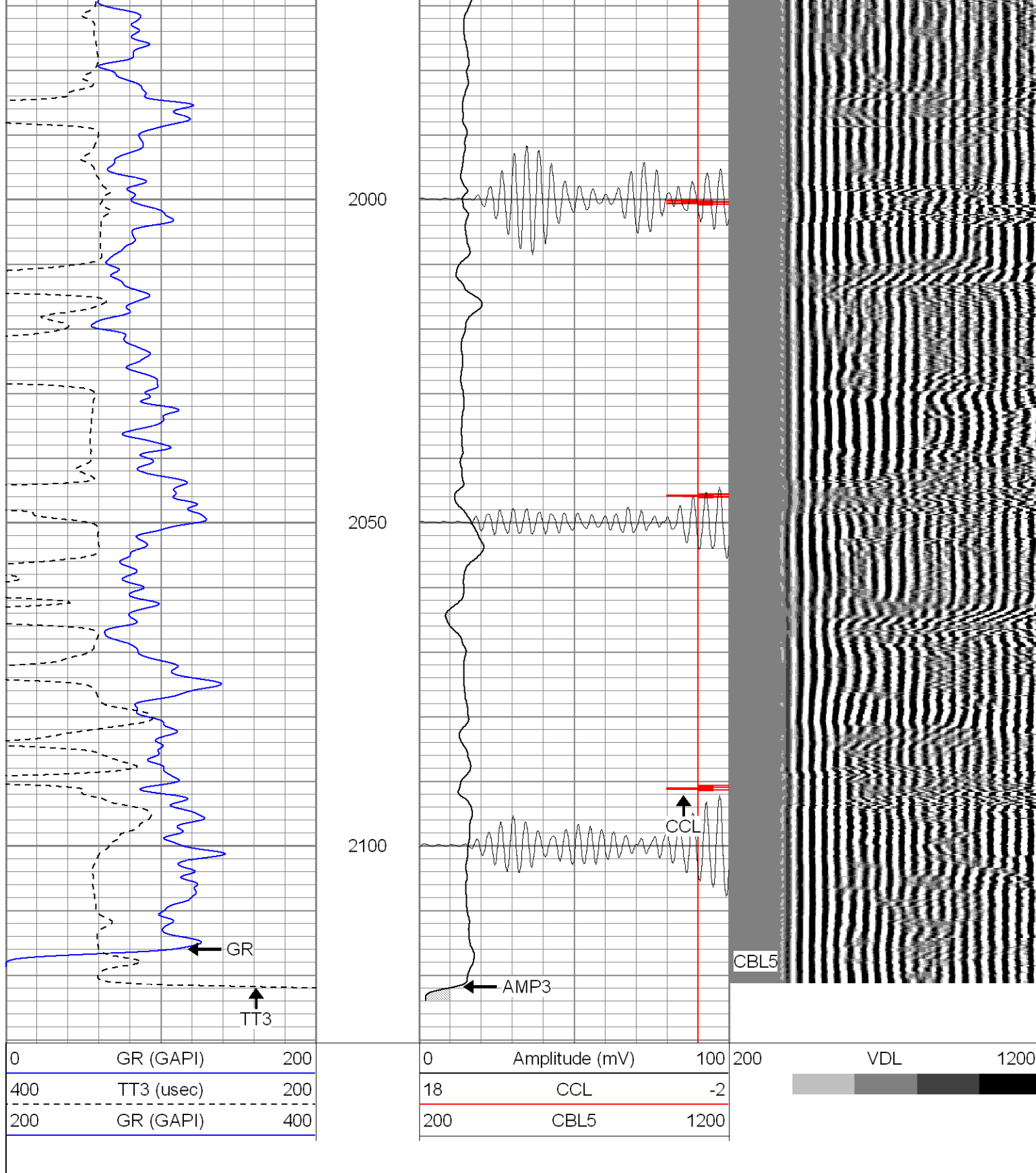
1600

1650

1700







SUPERIOR

Black Lick, Pa.
Mercer, Pa.
Wooster, Oh.
Cleveland, Ok.
Trinidad, Co.

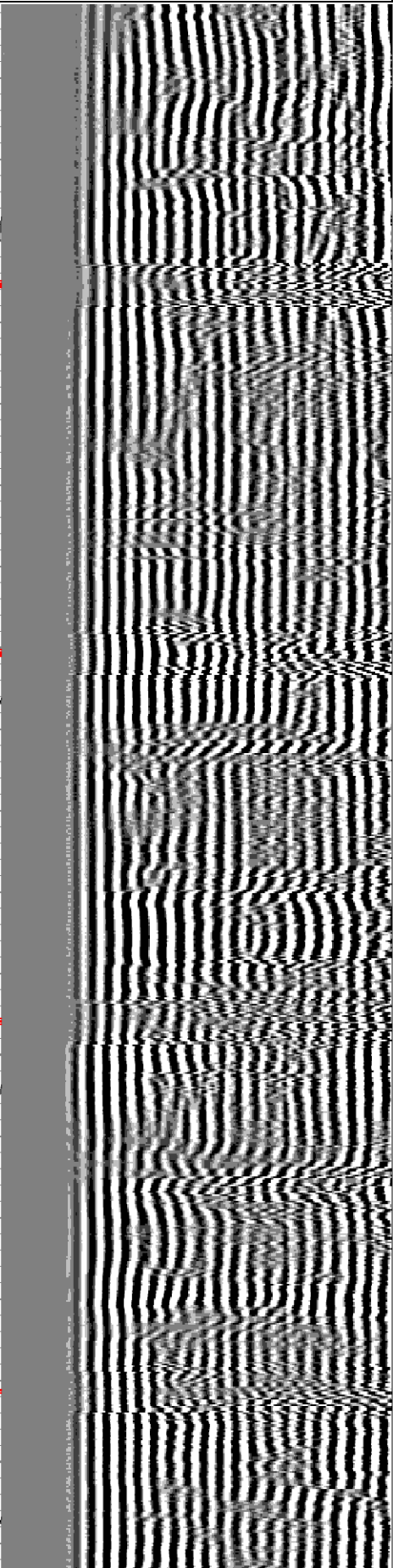
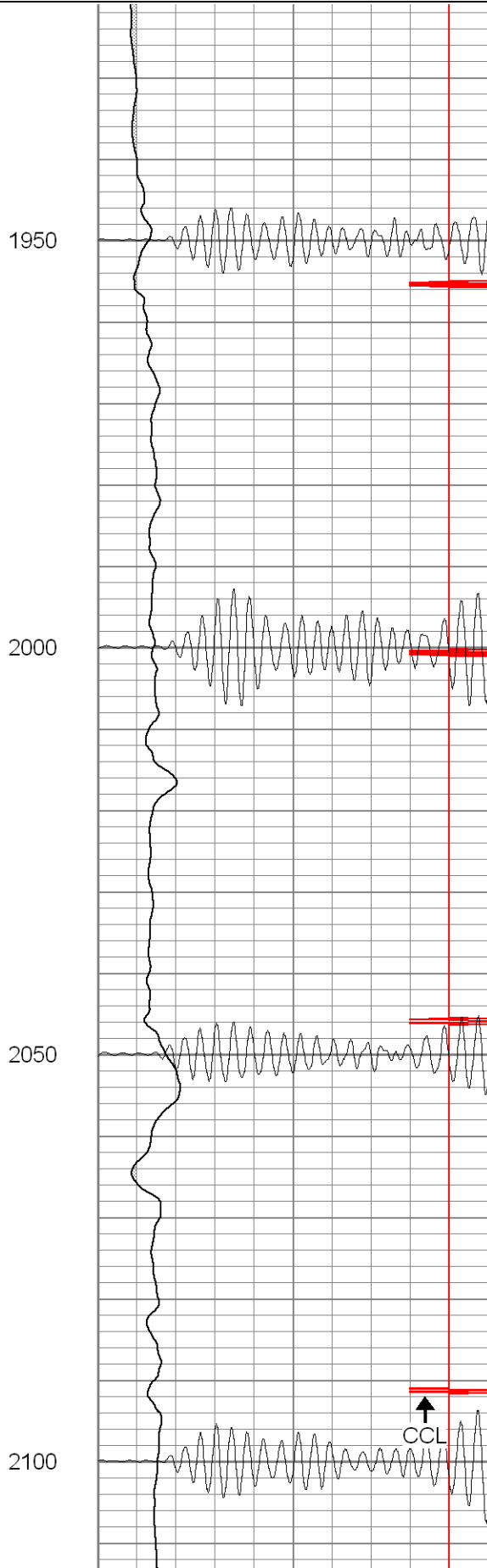
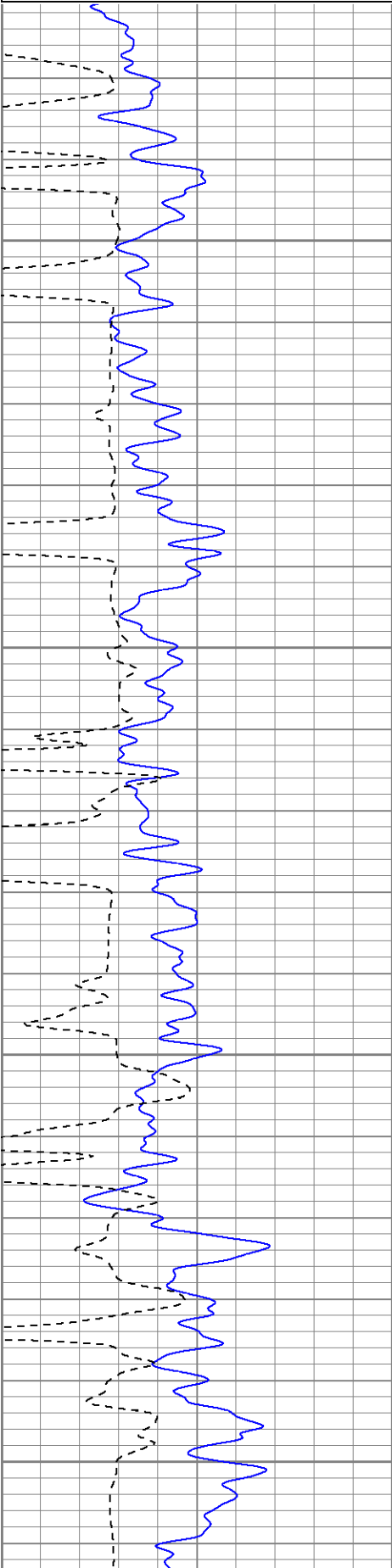
Repeat Section

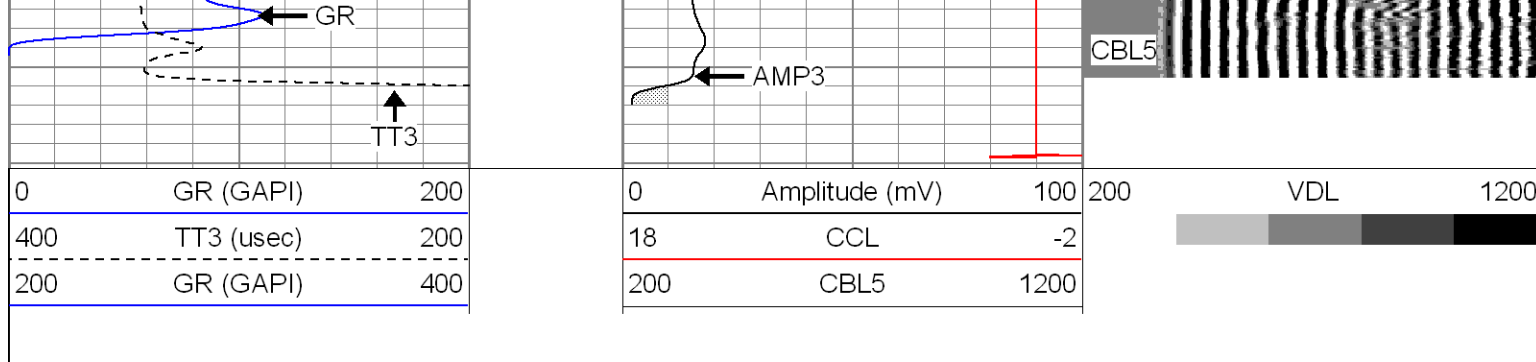
Database File: xtoac031373008b.db
 Dataset Pathname: pass1.1
 Presentation Format: cblrt
 Dataset Creation: Wed Jul 30 09:20:48 2008 by Gale Open Cases 071320

0	GR (GAPI)	200
400	TT3 (usec)	200
200	GR (GAPI)	400

0	Amplitude (mV)	100
18	CCL	-2
200	CBL5	1200

200	VDL	1200
-----	-----	------





Calibration Report

Database File: xtoac031373008b.db
 Dataset Pathname: pass1
 Dataset Creation: Wed Jul 30 08:10:02 2008 by Log Open-Cased 071220

Cement Bond Log Calibration Report

Serial Number: Titan5
 Tool Model: T5
 Performed: Thu Jul 03 10:23:25 2008

Depth: 2424.98 ft
 Casing Diameter: 5.5 in

3' Spacing 5' Spacing

Signal Zero: 1 1 mV
 Calibrated Amplitude: 85 85 mV
 Reading at Signal Zero: -0.02 0 V
 Reading in Free Pipe: 1.49 2.4 V

Gain: 55.6291 35
 Offset: 2.11258 1

Gamma Ray Calibration Report

Serial Number: Titan5
 Tool Model: T2
 Performed: Wed Jul 02 08:27:42 2008

Calibrator Value: 200.0 GAPI

Background Reading: 54.0 cps
 Calibrator Reading: 219.0 cps

Sensitivity: 0.9900 GAPI/cps

Sensor	Offset (ft)	Schematic	Description	Len (ft)	OD (in)	Wt (lb)
GR	13.64		X	3.00	1.69	25.00
			GR-T2 (Titan5)	2.52	1.69	25.00
WVF5	9.49					
WVF3	8.49		CBL-T5 (Titan5)	7.23	2.44	110.00
			X	3.00	1.69	25.00

