



SUPERIOR
WELL SERVICES
Black Lick, Pa.
Mercer, Pa.
Wooster, Oh.
Cleveland, Ok.
Trinidad, Co.

**CEMENT
BOND
LOG
1000 PSI**

Company XTO Energy, Inc.
Well Golden Eagle 34-06
Field Purgatoire River
County Las Animas State CO

Location: API # : 05 071 09539 00

1733 FNL & 1557' FWL

SEC 34 TWP 33S RGE 67W

Permanent Datum Ground Level Elevation 7467'
Log Measured From Ground Level
Drilling Measured From Ground Level

Other Services
TEMP
Elevation
K.B. -----
D.F. -----
G.L. 7467'

Date 7-18-08

Run Number	One
Depth Driller	2200'
Depth Logger	2126'
Bottom Logged Interval	2125'
Top Log Interval	Surface
Open Hole Size	7 7/8"
Type Fluid	Water
Density / Viscosity	///
Max. Recorded Temp.	116F
Estimated Cement Top	28'
Time Well Ready	ROA
Time Logger on Bottom	7:45AM
Equipment Number	T0702
Location	Trinidad
Recorded By	E. Ray
Witnessed By	Travis Gourdin

Borehole Record				Tubing Record			
Bit	From	To	Size	Weight	From	To	

Casing Record	Size	Wgt/Ft	Top	Bottom
Surface String	8 5/8"		00	483'
Prot. String				
Production String	5 1/2"		00	2130'
Liner				

<<< Fold Here >>>

All interpretations are opinions based on inferences from electrical or other measurements and we cannot and do not guarantee the accuracy or correctness of any interpretation, and we shall not, except in the case of gross or willful negligence on our part, be liable or responsible for any loss, costs, damages, or expenses incurred or sustained by anyone resulting from any interpretation made by any of our officers, agents or employees. These interpretations are also subject to our general terms and conditions set out in our current Price Schedule.

Comments

First Bosque entrance, take right @ Cherry Canyon, Left @ Y, go thru green gate, take right just before Compressor Station 5, dead end on location

Main Pass 1000PSI
Repeat Section 0PSI



SUPERIOR
Black Lick, Pa.
Mercer, Pa.
Wooster, Oh.
Cleveland, Ok.
Trinidad, Co.

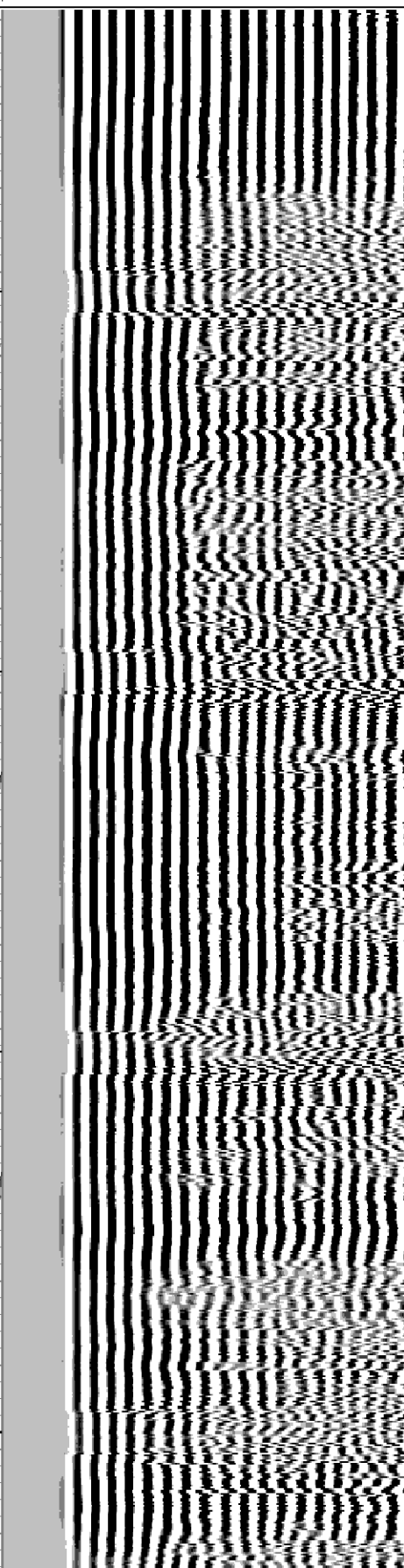
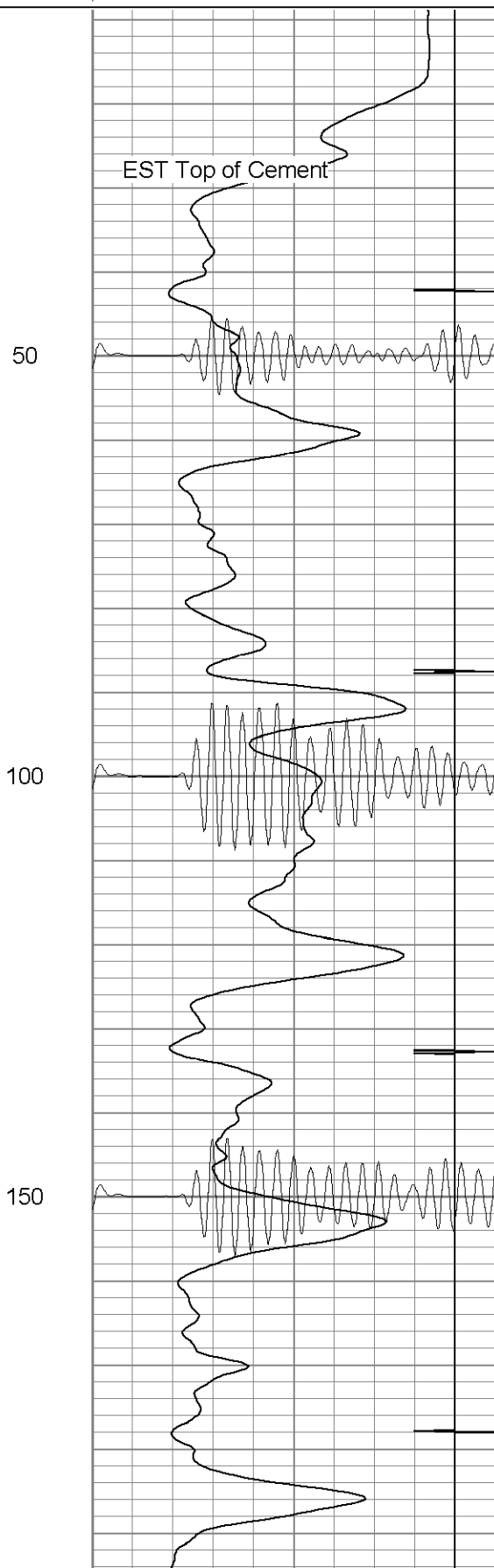
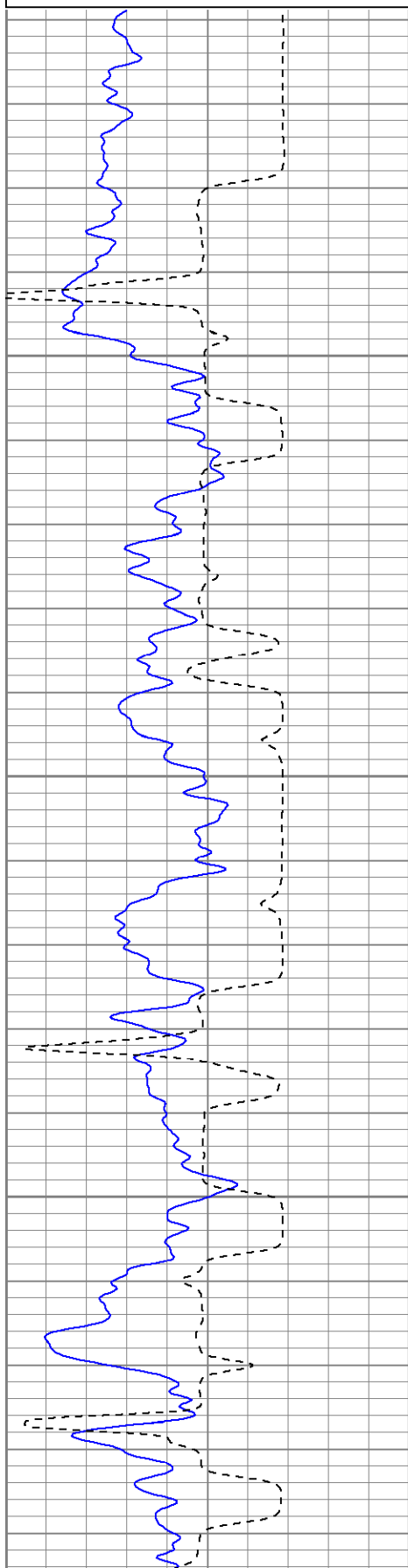
Main Pass (1000PSI)

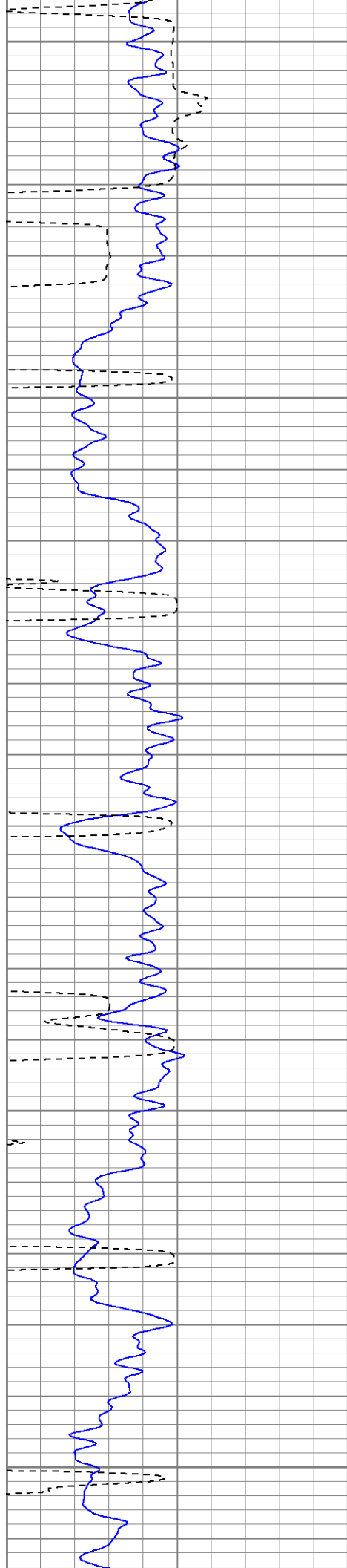
Database File: ge340671808b.db
Dataset Pathname: pass3
Presentation Format: cblrt
Dataset Creation: Fri Jul 18 08:05:15 2008 by Log Std Casedhole 07081
Charted by: Depth in Feet scaled 1:240

0	GR (GAPI)	200
400	TT3 (usec)	200

0	AMP3 (mV)	100
18	CCL	-2
100	CBL5	1200

200	Variable Density	1200
-----	------------------	------





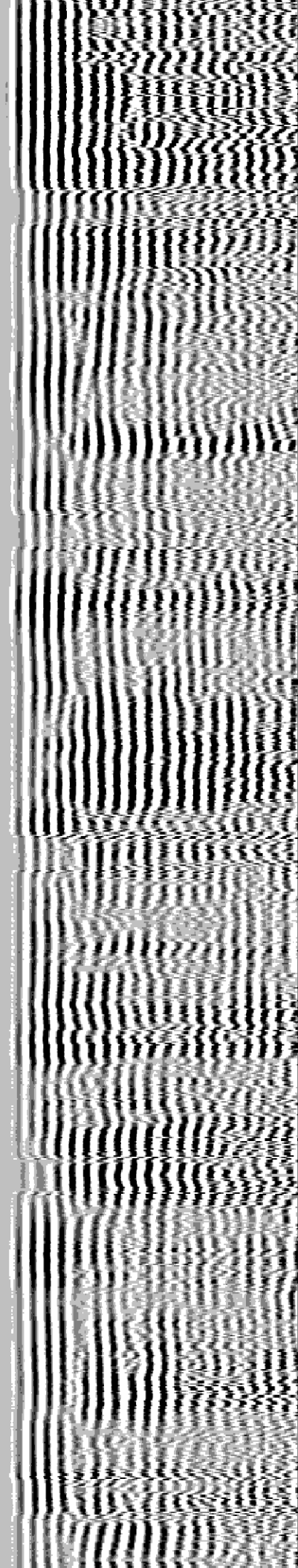
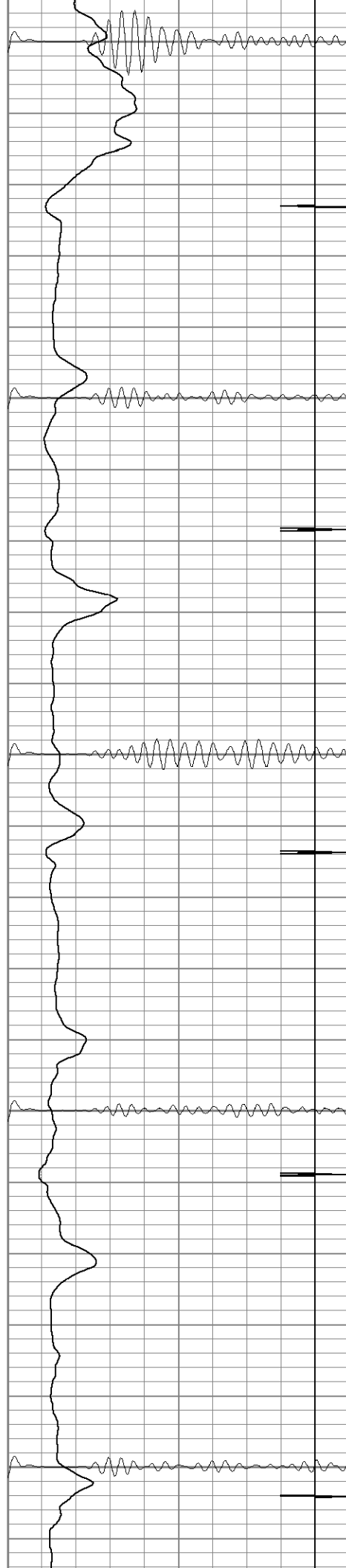
200

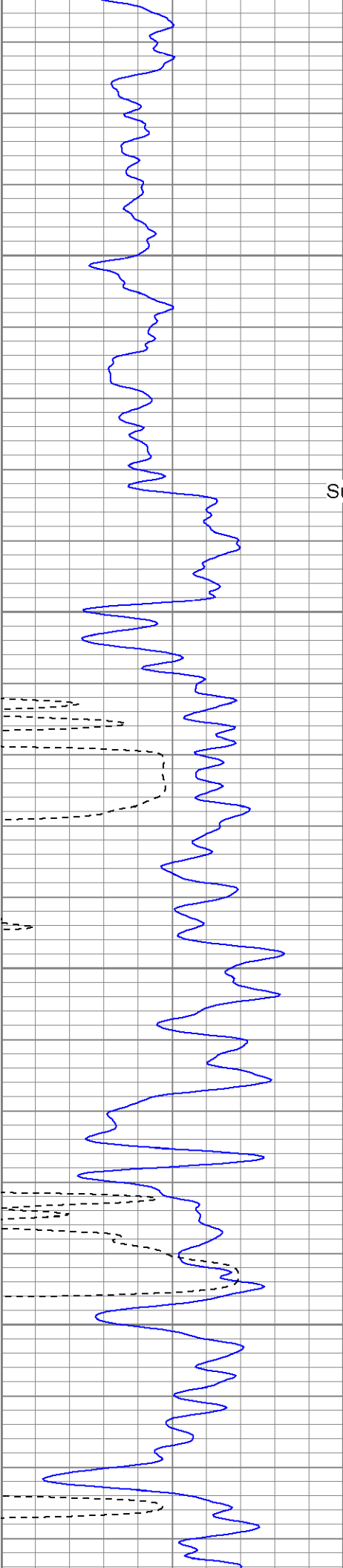
250

300

350

400





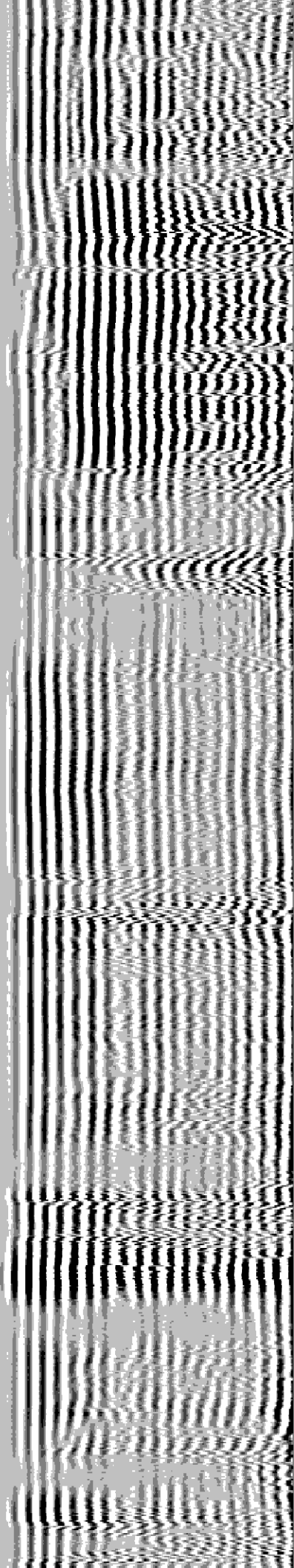
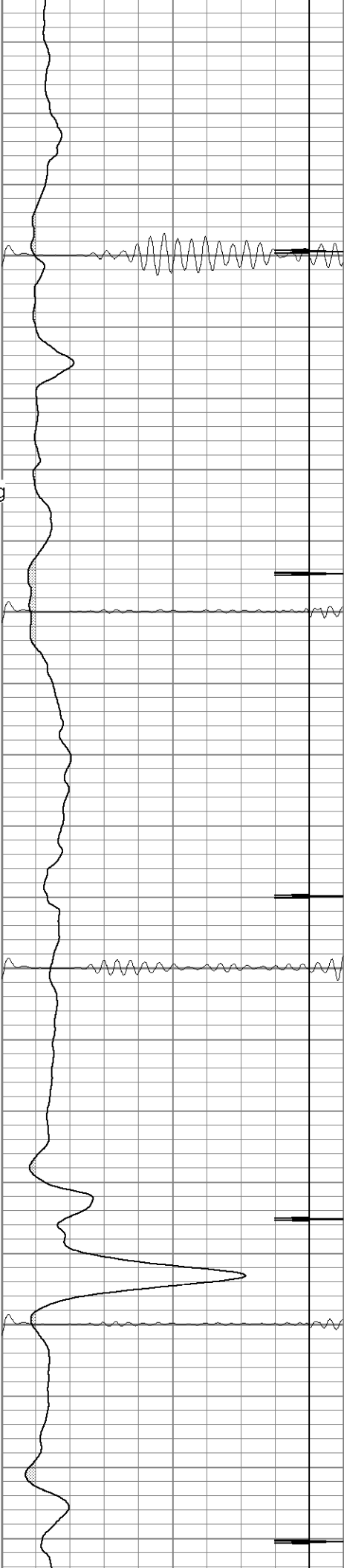
Surface Casing

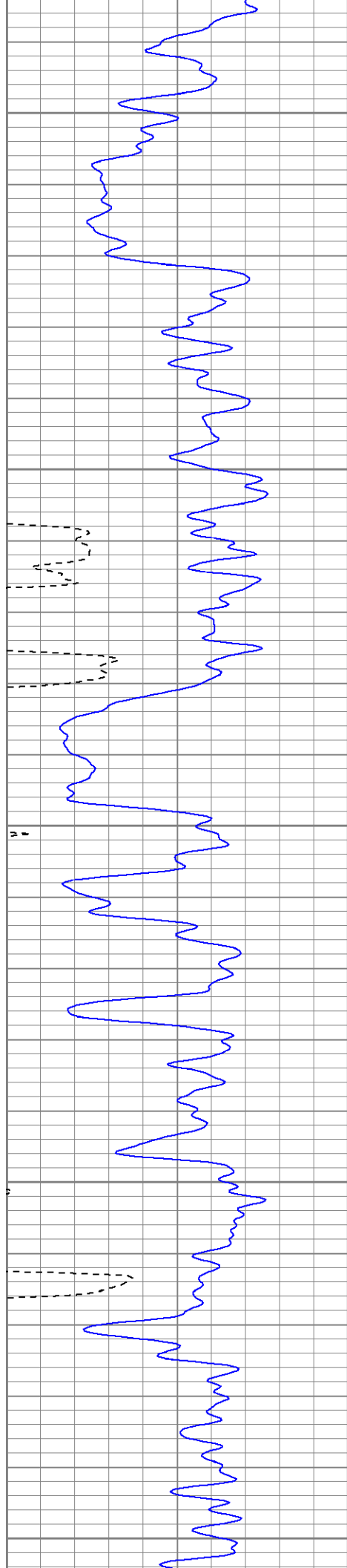
450

500

550

600





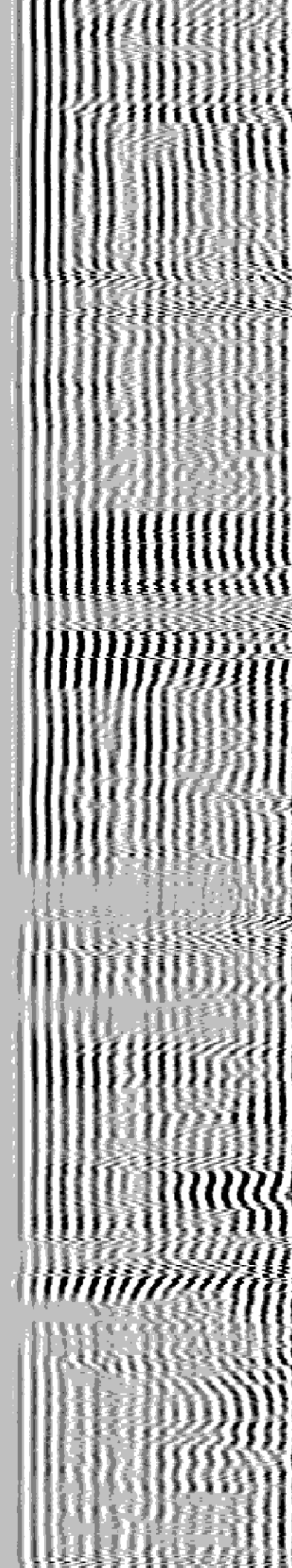
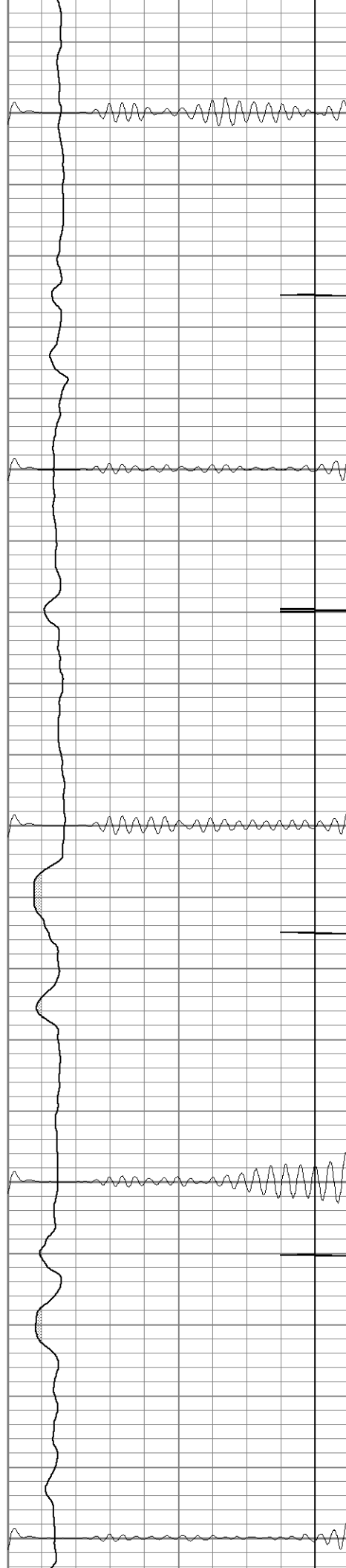
650

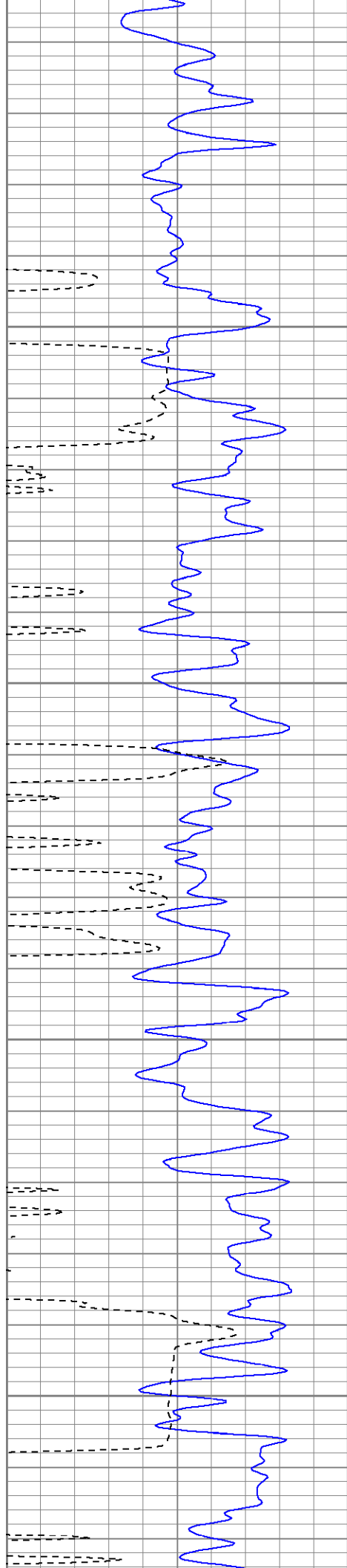
700

750

800

850



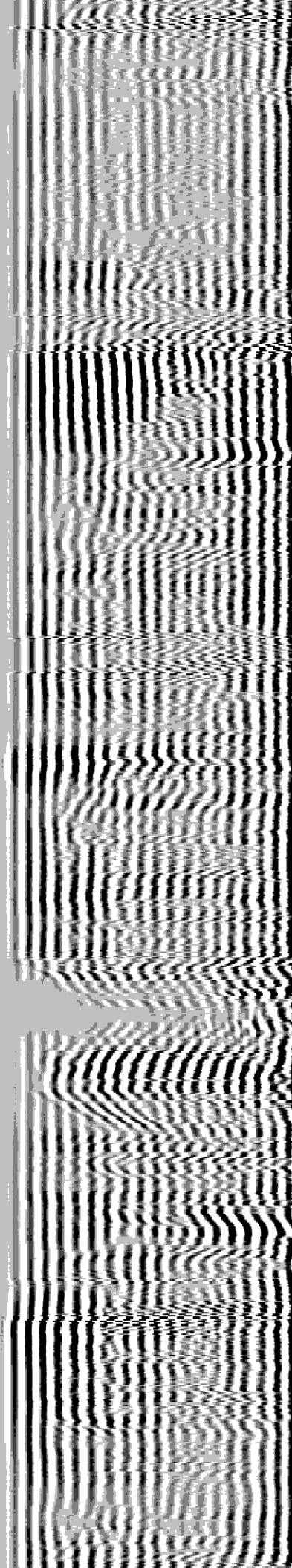
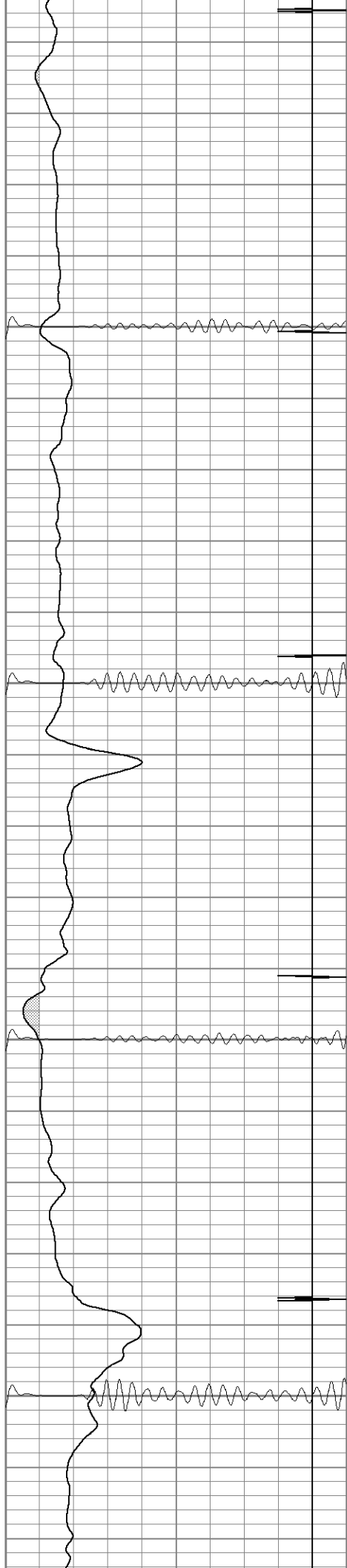


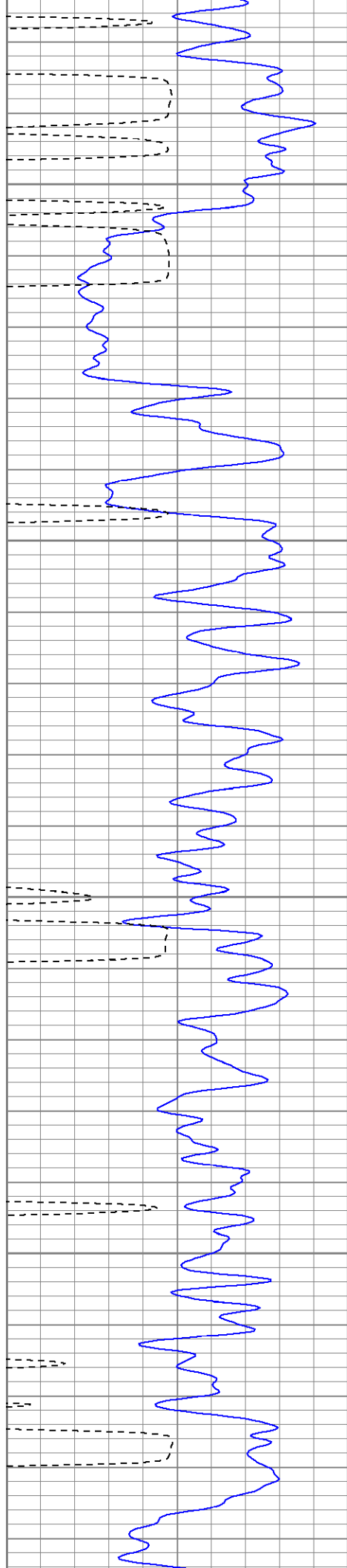
900

950

1000

1050



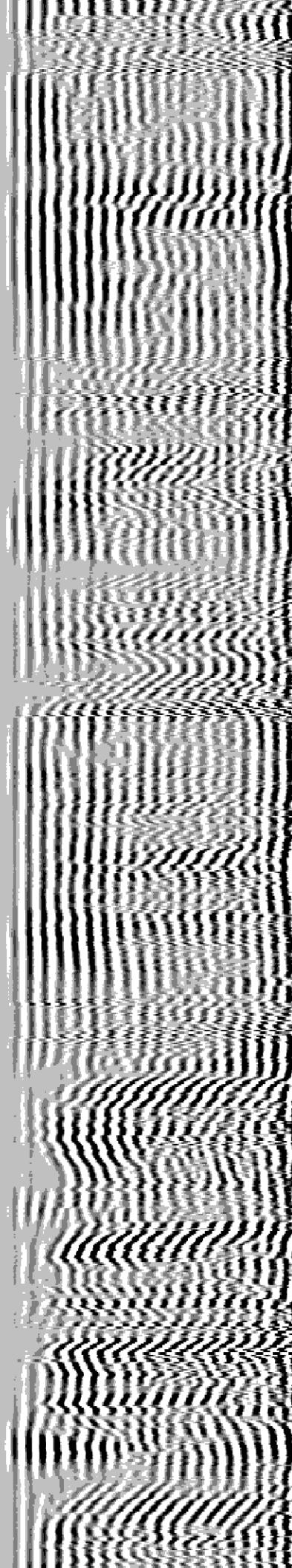
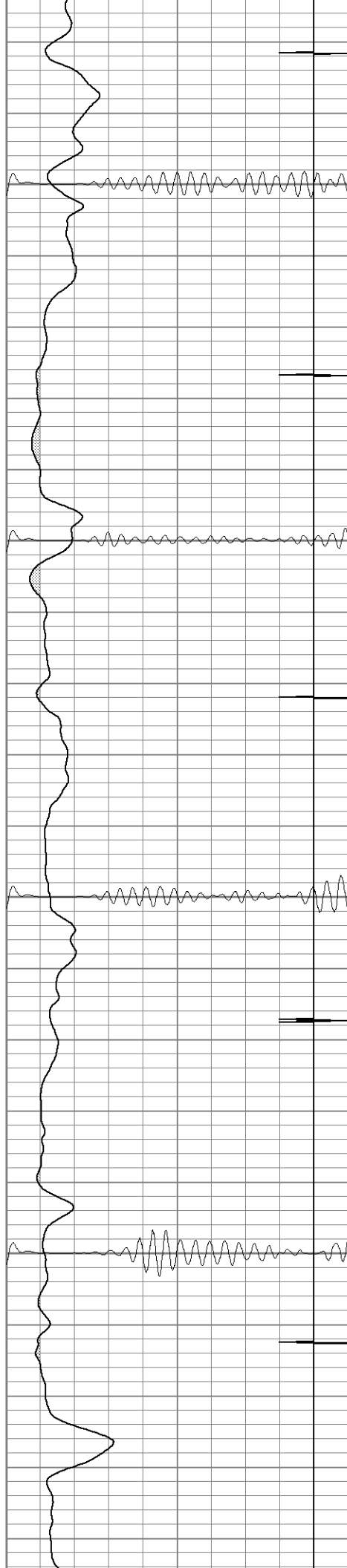


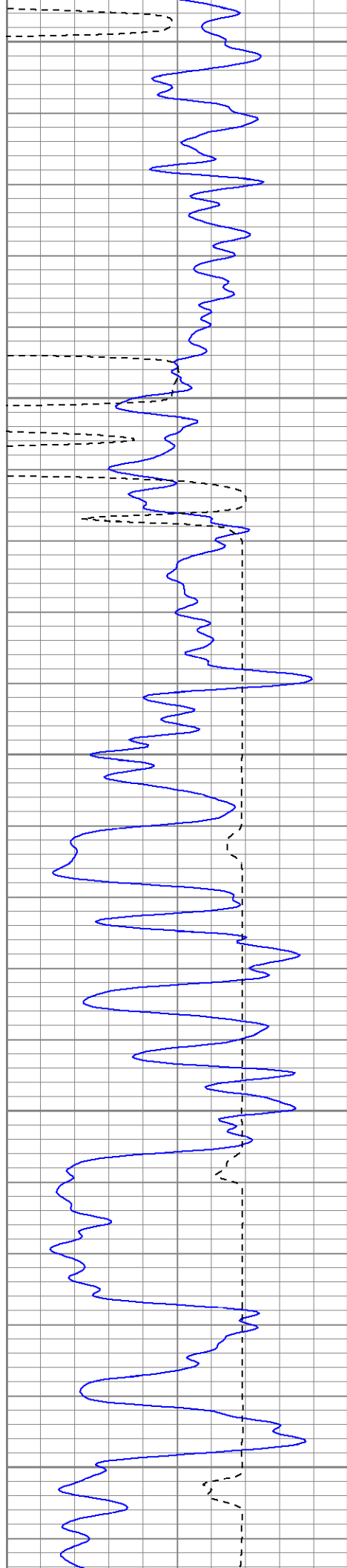
1100

1150

1200

1250





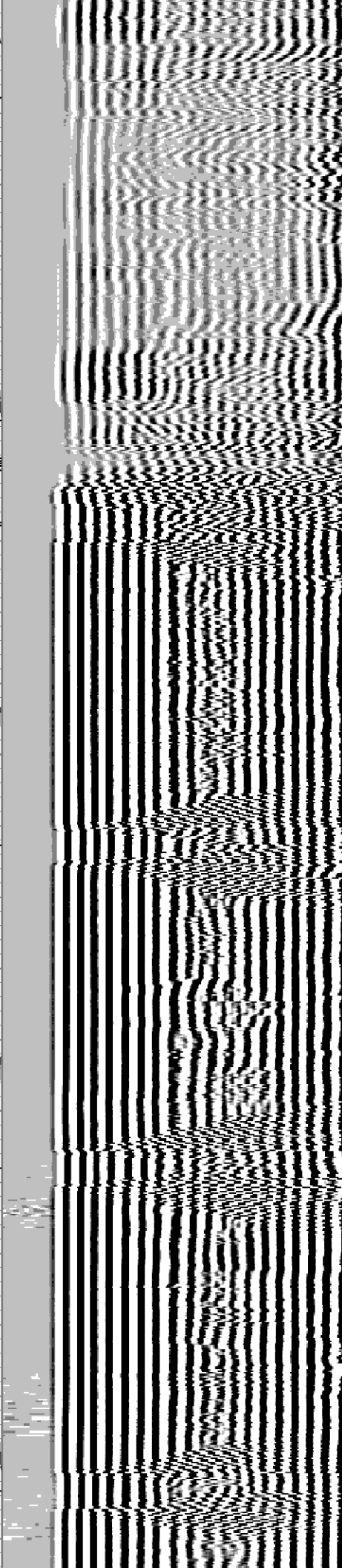
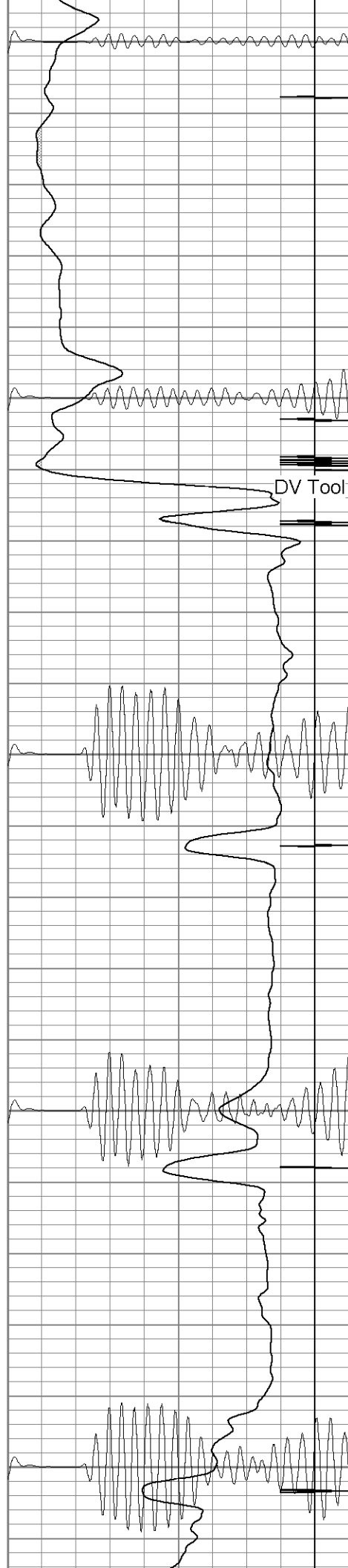
1300

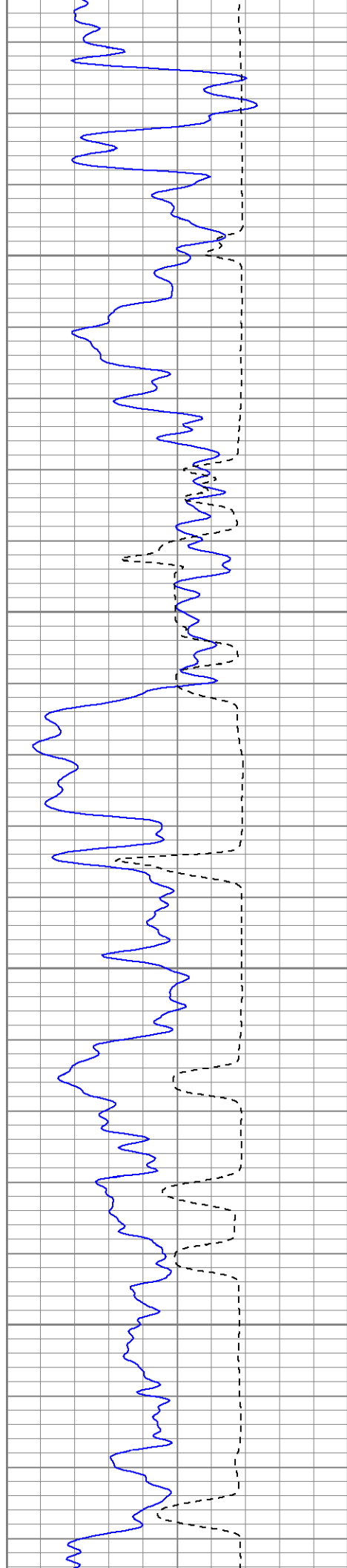
1350

1400

1450

1500



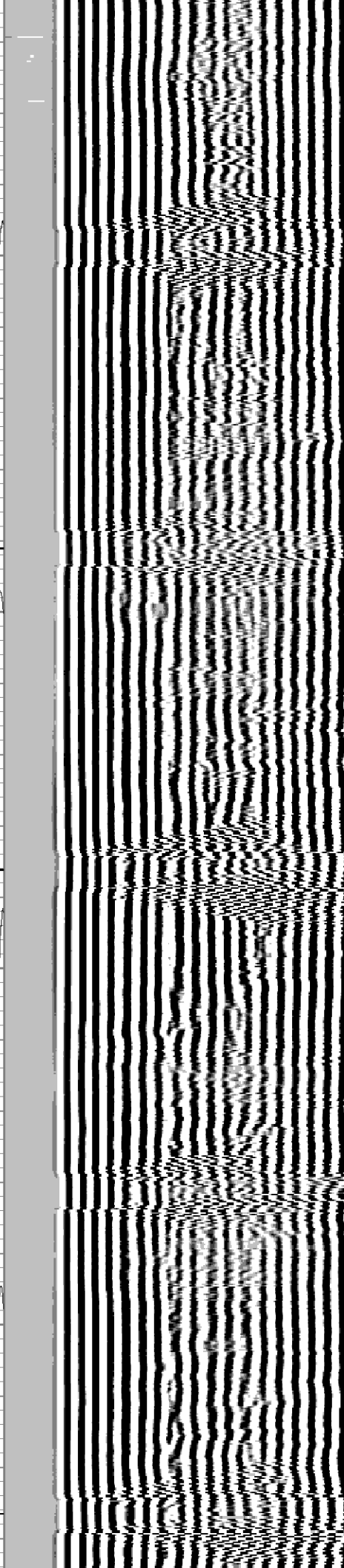
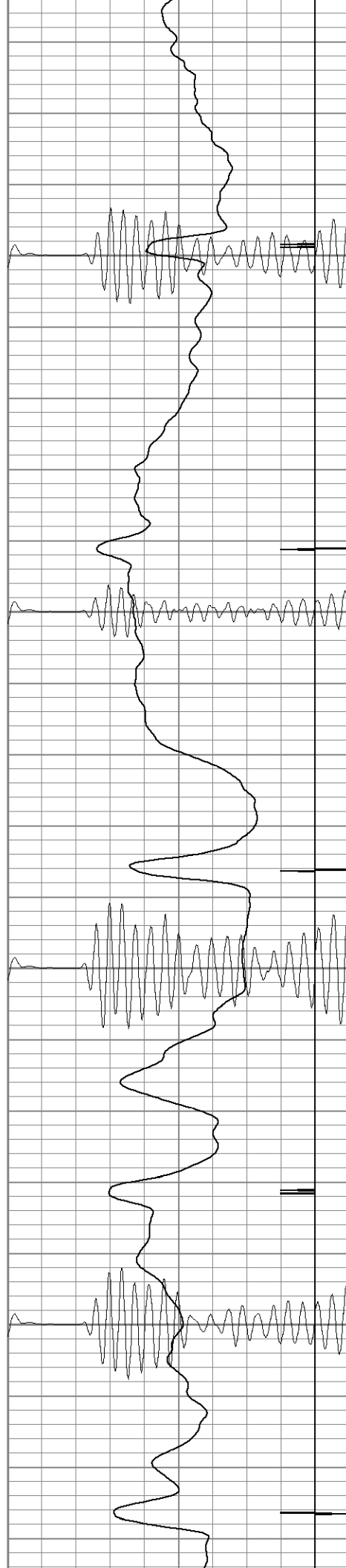


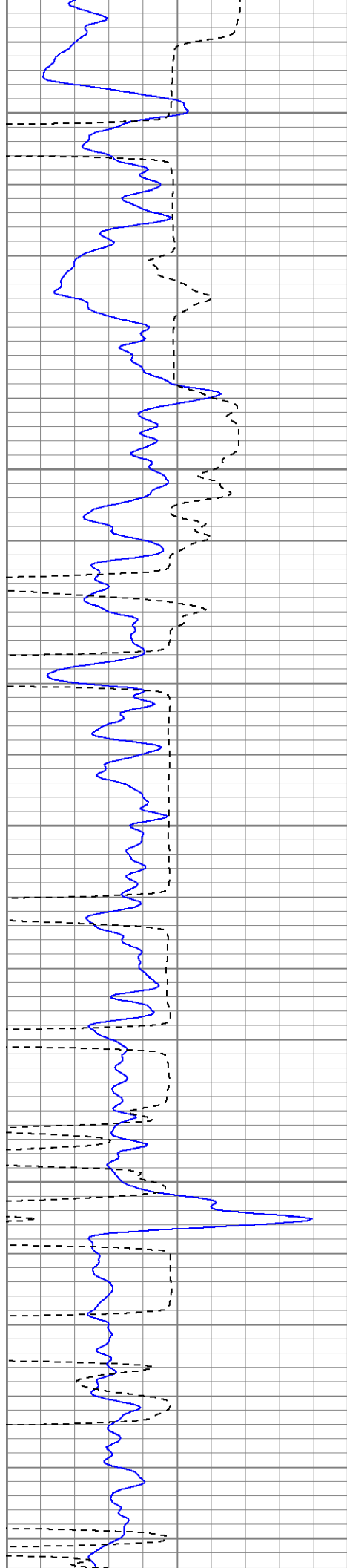
1550

1600

1650

1700





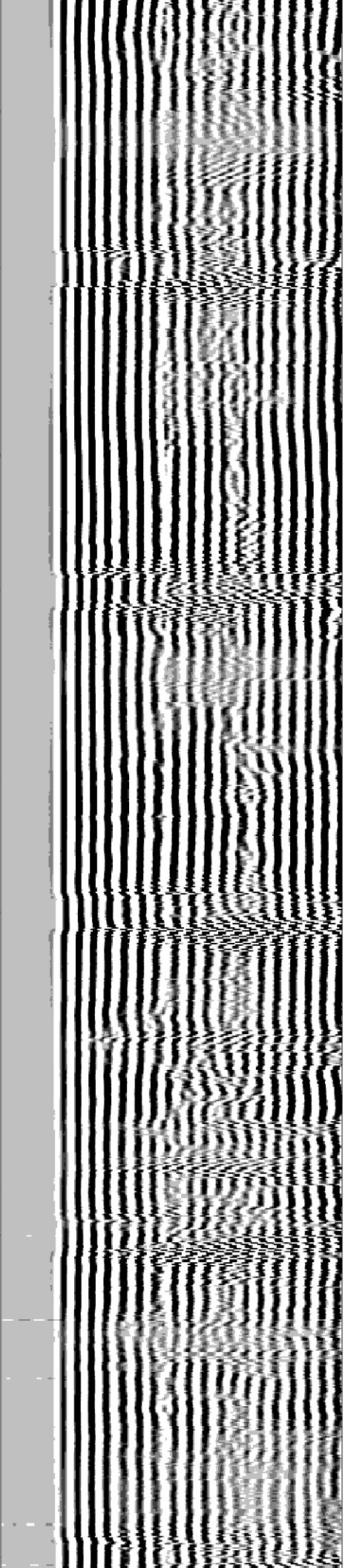
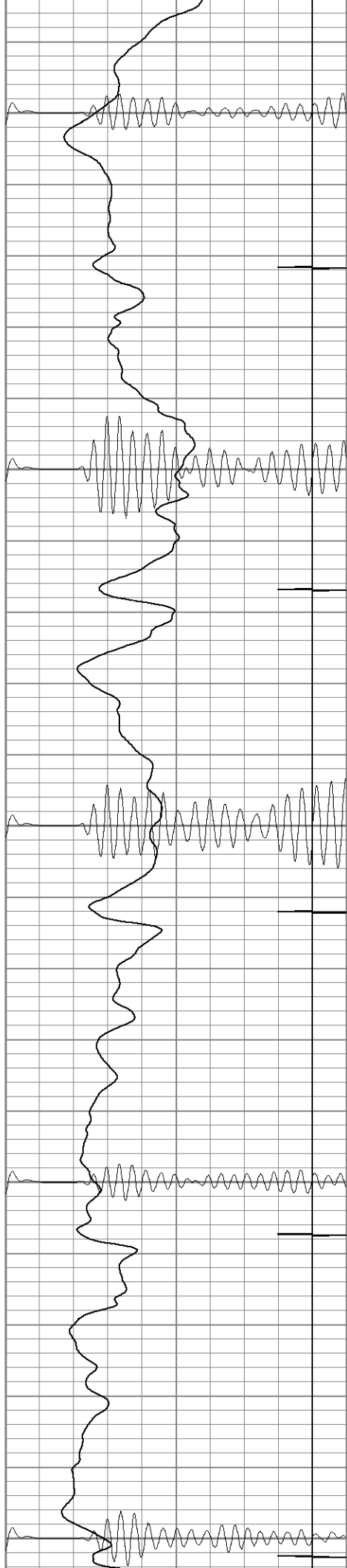
1750

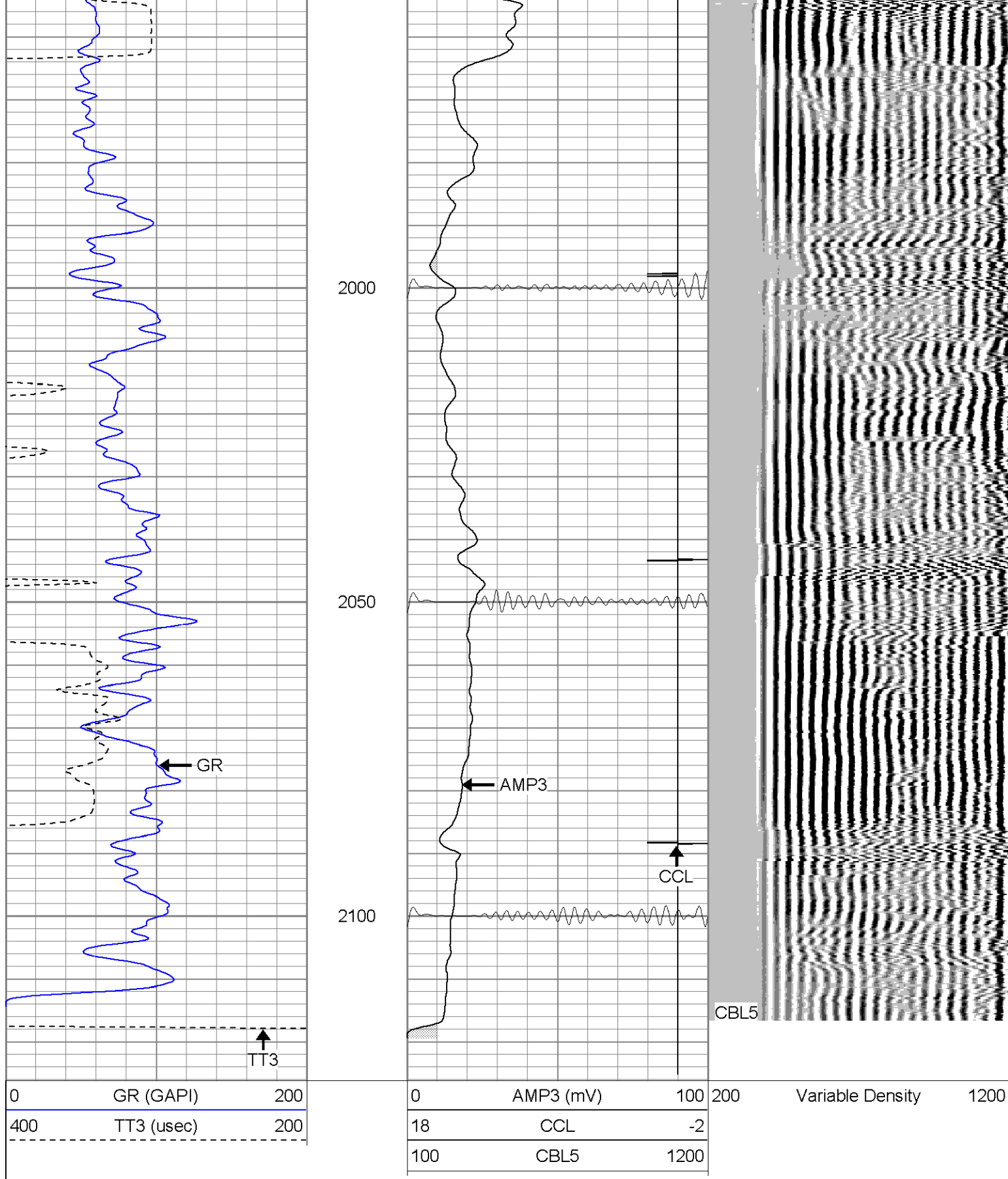
1800

1850

1900

1950

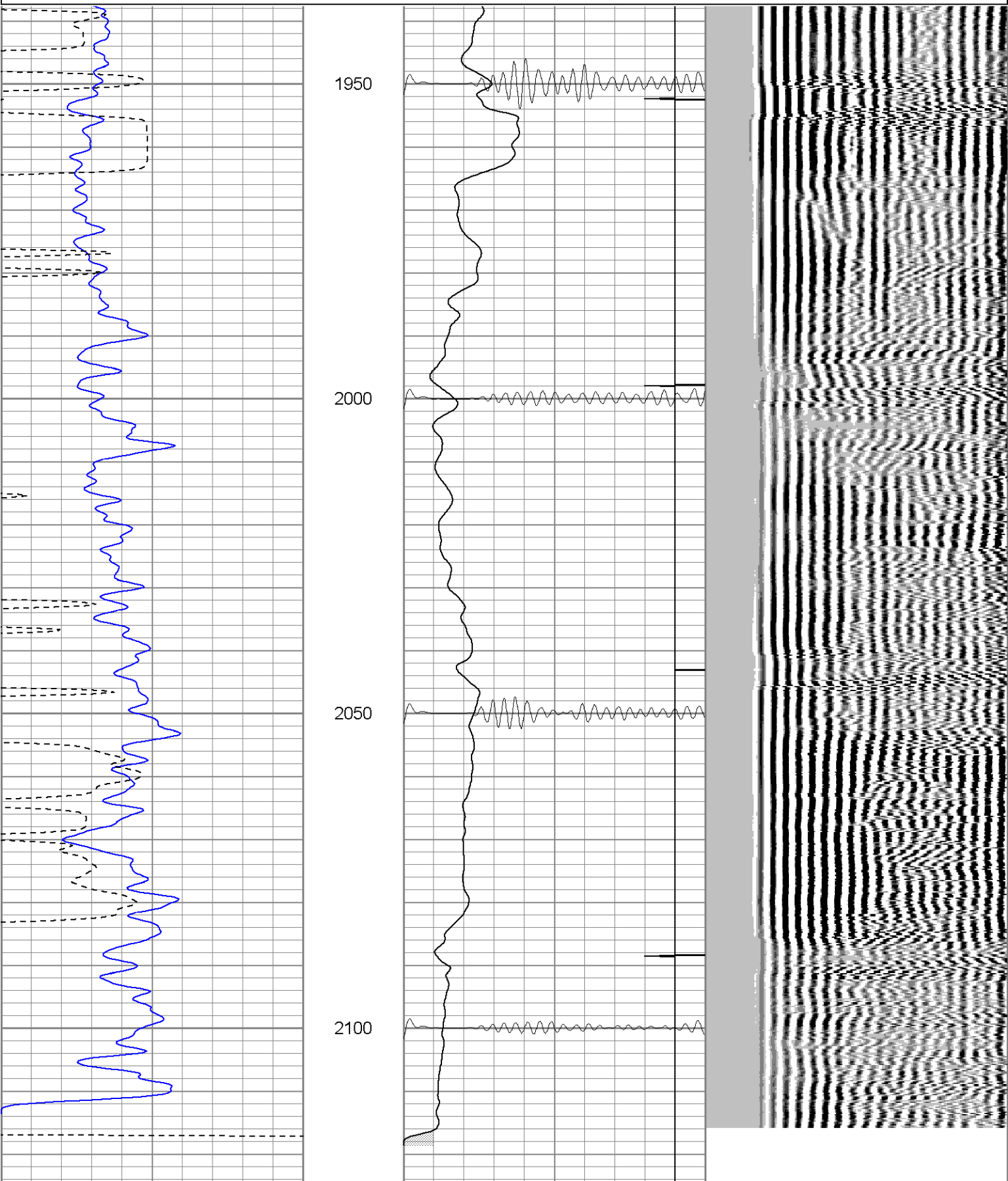




SUPERIOR
 Black Lick, Pa.
 Mercer, Pa.
 Wooster, Oh.
 Cleveland, Ok.
 Trinidad, Co.

Repeat Section (0PSI)

0	GR (GAPI)	200	0	AMP3 (mV)	100	200	Variable Density	1200
400	TT3 (usec)	200	18	CCL	-2			
			100	CBL5	1200			



400	TT3 (usec)	200	18	CCL	-2
			100	CBL5	1200

Calibration Report

Database File: ge340671808b.db
Dataset Pathname: pass1
Dataset Creation: Fri Jul 18 07:55:09 2008 by Log Std Casedhole 07081

Cement Bond Log Calibration Report

Serial Number: Titan5
Tool Model: T2
Performed: Tue Jul 15 17:07:00 2008

Depth: 0 ft
Casing Diameter: 0 in

3' Spacing 5' Spacing

Signal Zero: 0 0 mV
Calibrated Amplitude: 85 85 mV
Reading at Signal Zero: 0 0.008 V
Reading in Free Pipe: 0.88 2 V

Gain: 96.5909 42.6707
Offset: 0 -0.341365

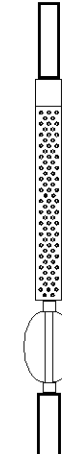
Gamma Ray Calibration Report

Serial Number: Titan5
Tool Model: T2
Performed: Tue Jul 15 16:01:57 2008

Calibrator Value: 250.0 GAPI

Background Reading: 40.0 cps
Calibrator Reading: 220.0 cps

Sensitivity: 1.1000 GAPI/cps

Sensor	Offset (ft)	Schematic	Description	Len (ft)	OD (in)	Wt (lb)
GR	13.64		GR-T2 (Titan5)	2.52	2.44	25.00
WVF5	9.49		CBL-T2 (Titan5)	7.23	2.25	110.00
WVF3	8.49					
			X	3.00	3.00	25.00
CCL	0.83		CCL-T5 (Titan5) Long	2.15	2.75	15.00

Dataset: ge340671808b.db: field/well/run1/pass1
Total Length: 14.91 ft
Total Weight: 175.00 lb
O.D. 3.00 in