



SUPERIOR
WELL SERVICES
Black Lick, Pa.
Mercer, Pa.
Wooster, Oh.
Cleveland, Ok.
Trinidad, Co.

**CEMENT BOND
GAMMA RAY
LOG
1000 PSI**

Company XTO Energy Inc.
Well New Elk 25-04
Field Purgatoire River
County Las Animas State Colorado

Location: API # : 05 071 09535 00
829' FNL & 1200' FWL
SEC 25 TWP 33S RGE 68W
Permanent Datum Ground Level Elevation 7765'
Log Measured From Ground Level
Drilling Measured From Ground Level
Other Services
Elevation
K.B. -----
D.F. -----
G.L. 7765'

Date 7-3-08

Run Number	One		
Depth Driller	2200'		
Depth Logger	1824'		
Bottom Logged Interval	1820'		
Top Log Interval	Surface		
Open Hole Size	7 7/8"		
Type Fluid	Water		
Density / Viscosity	///		
Max. Recorded Temp.	///		
Estimated Cement Top	757'		
Time Well Ready	R.O.A.		
Time Logger on Bottom	10:30 AM		
Equipment Number	T0700		
Location	Trinidad		
Recorded By	K. Lucero		
Witnessed By	Mr. Steve Dominguez		

Borehole Record				Tubing Record			
Run Number	Bit	From	To	Size	Weight	From	To
Casing Record	Size			Wgt/Ft		Top	Bottom
Surface String	8 5/8					00'	901'
Prot. String							
Production String	5 1/2					00'	2181'
Liner							

<<< Fold Here >>>

All interpretations are opinions based on inferences from electrical or other measurements and we cannot and do not guarantee the accuracy or correctness of any interpretation, and we shall not, except in the case of gross or willful negligence on our part, be liable or responsible for any loss, costs, damages, or expenses incurred or sustained by anyone resulting from any interpretation made by any of our officers, agents or employees. These interpretations are also subject to our general terms and conditions set out in our current Price Schedule.

Comments

Well Directions:

Second Bosque Entrance, stright across railroad tracks, right to Apache canyon, main road through 5 drive through locations, next right up hill, right at top of hill, dead end on location.



SUPERIOR
Black Lick, Pa.
Mercer, Pa.
Wooster, Oh.
Cleveland, Ok.
Trinidad, Co.

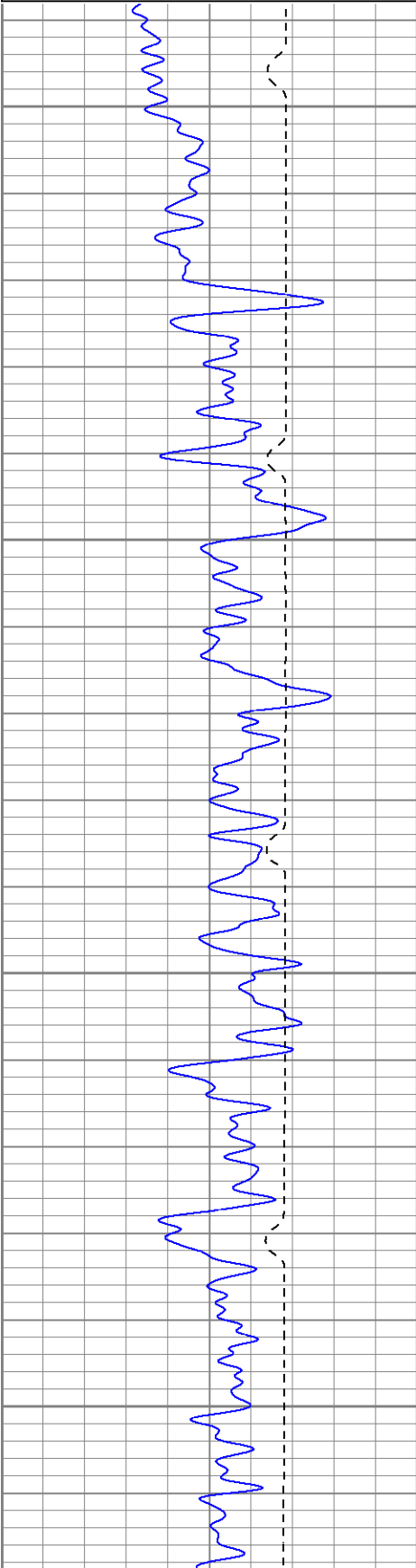
Main Pass 1000 PSI

Database File: xstone25-047308b.db
Dataset Pathname: pass2.1
Presentation Format: cblrt
Dataset Creation: Thu Jul 03 11:37:58 2008 by Calc Open-Cased 071220
Charted by: Depth in Feet scaled 1:240

0	GR (GAPI)	200
400	TT3 (usec)	200
<hr/>		
200	GR (GAPI)	400

0	Amplitude (mV)	100
18	CCL	-2
<hr/>		
200	CBL5	1200

200 VDL 1200

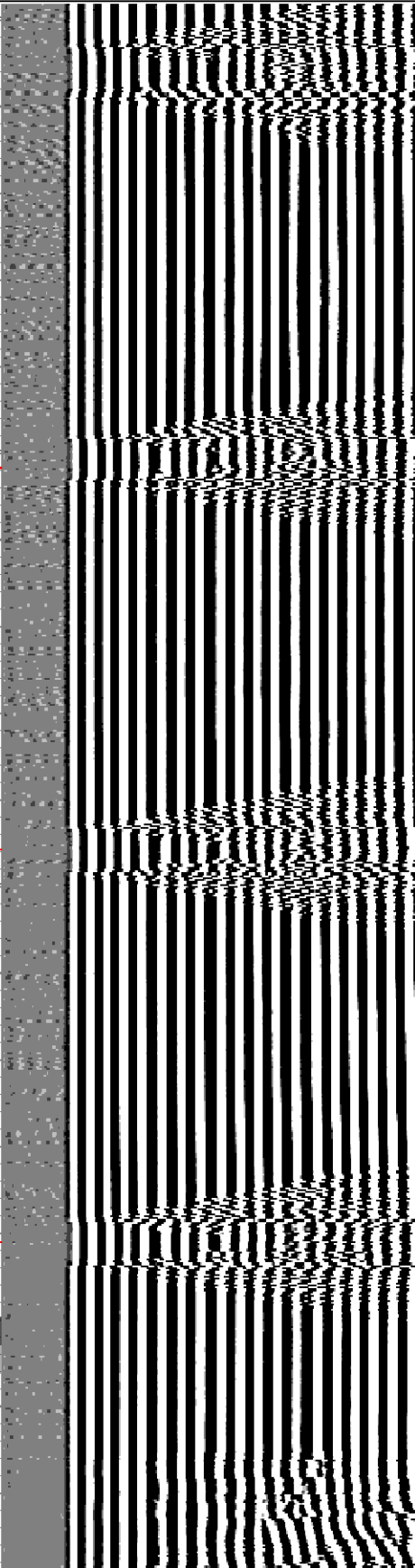
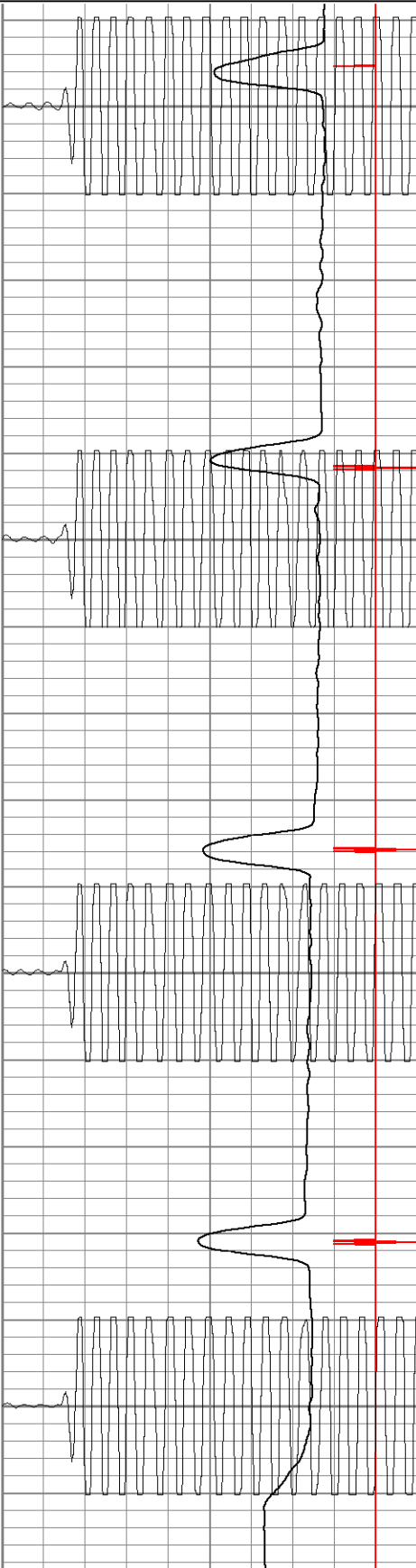


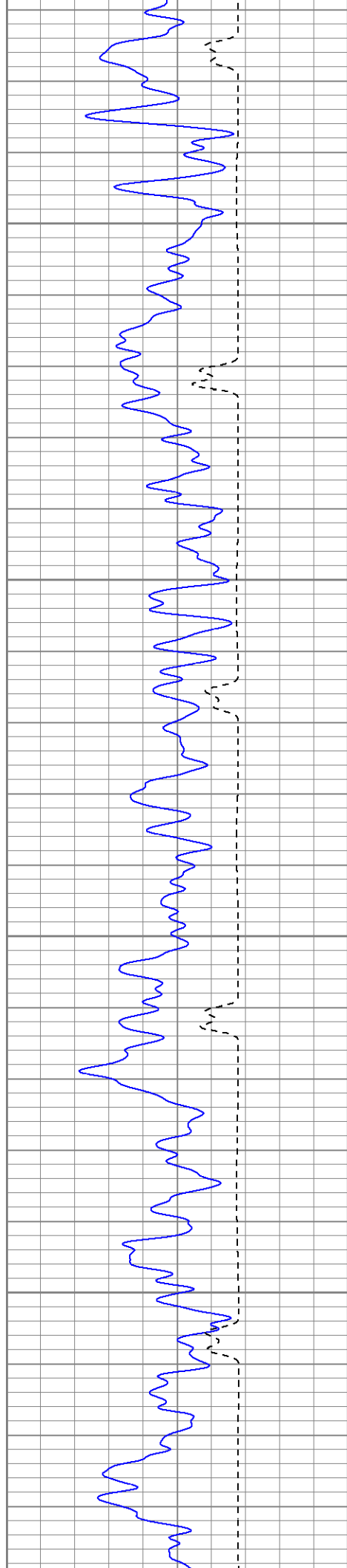
50

100

150

200



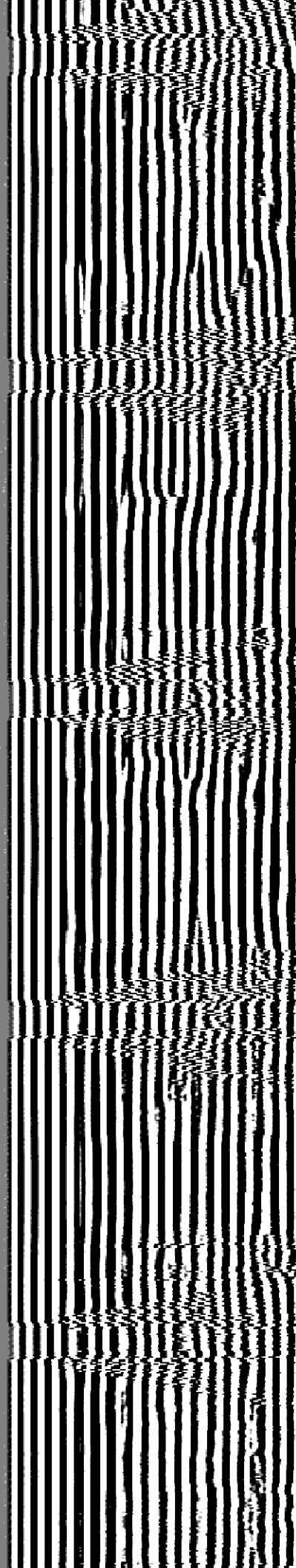
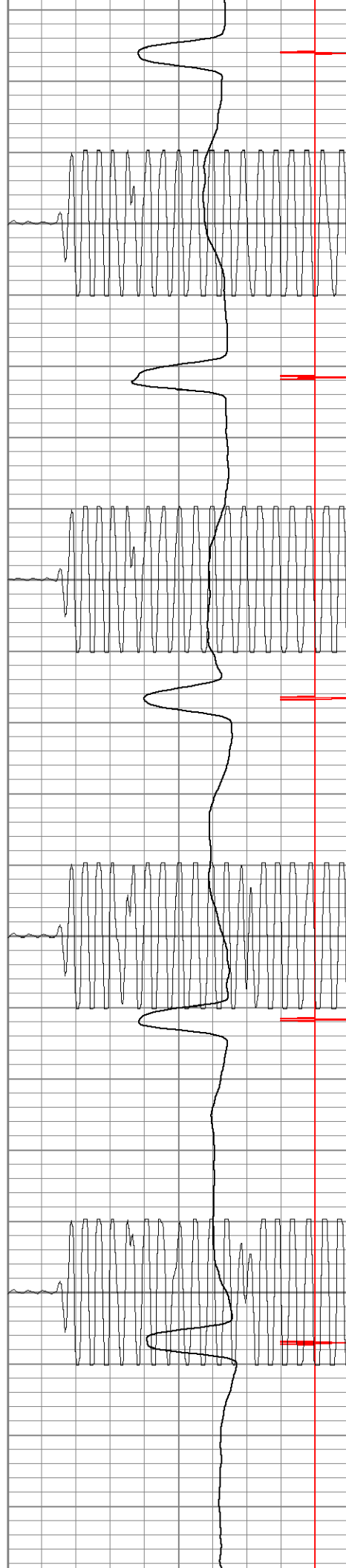


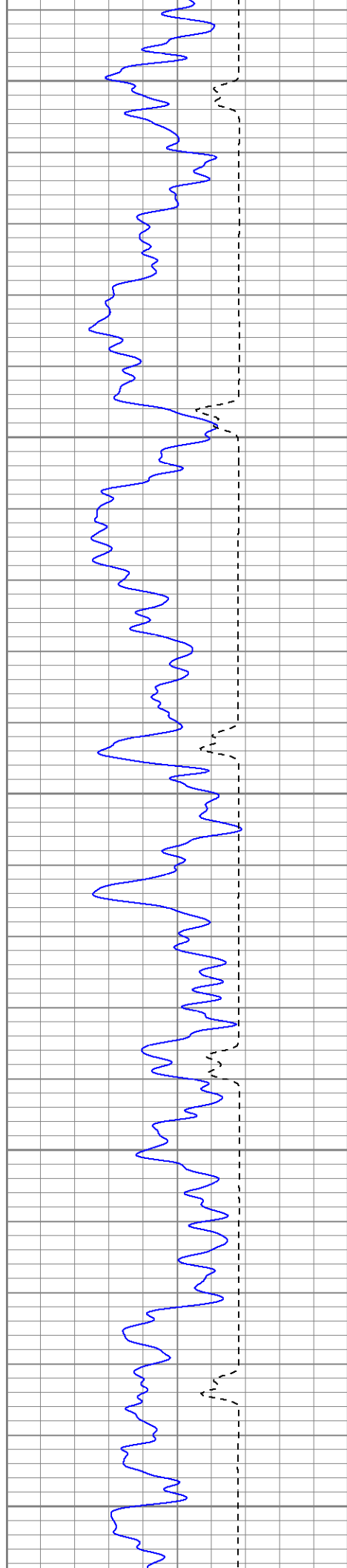
250

300

350

400





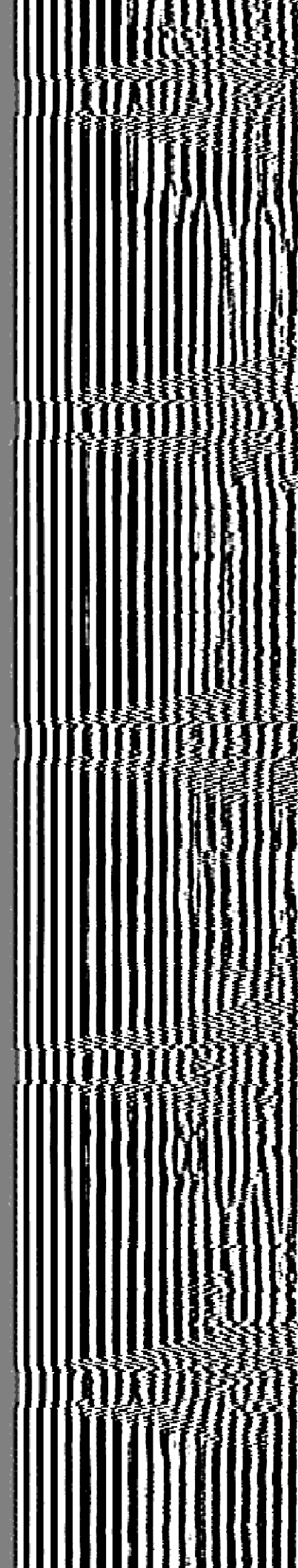
450

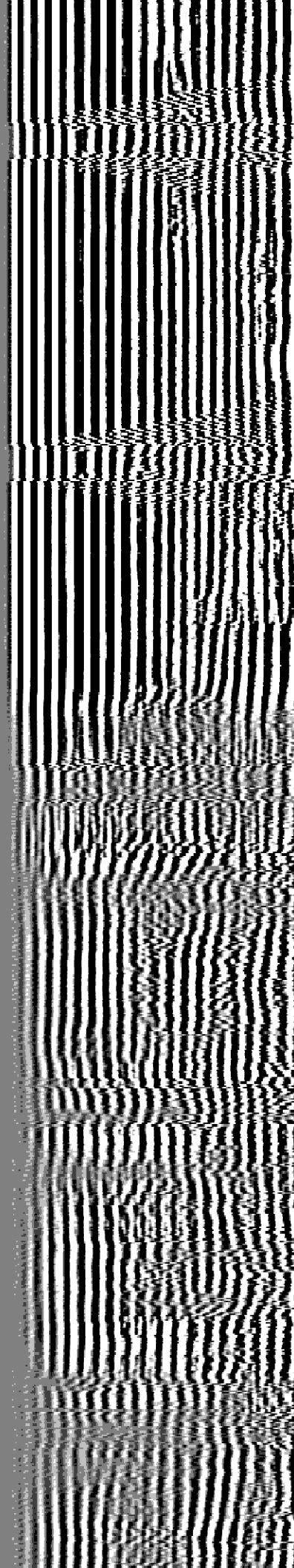
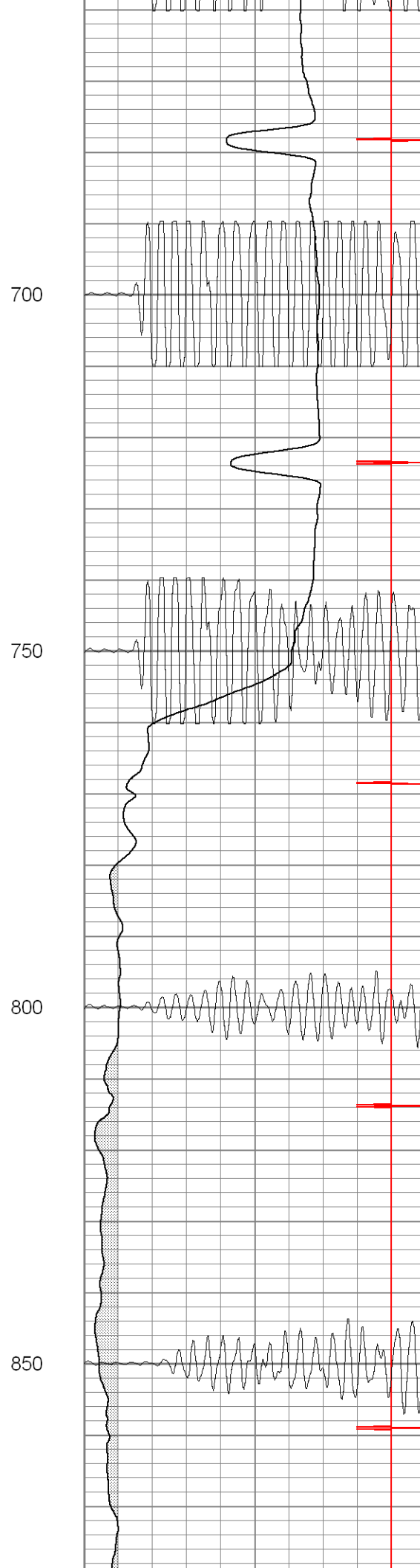
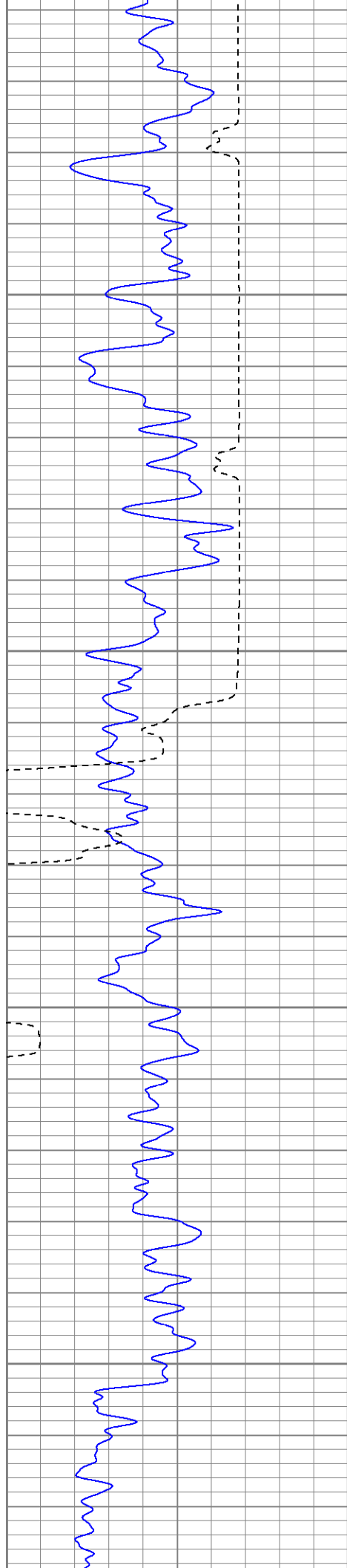
500

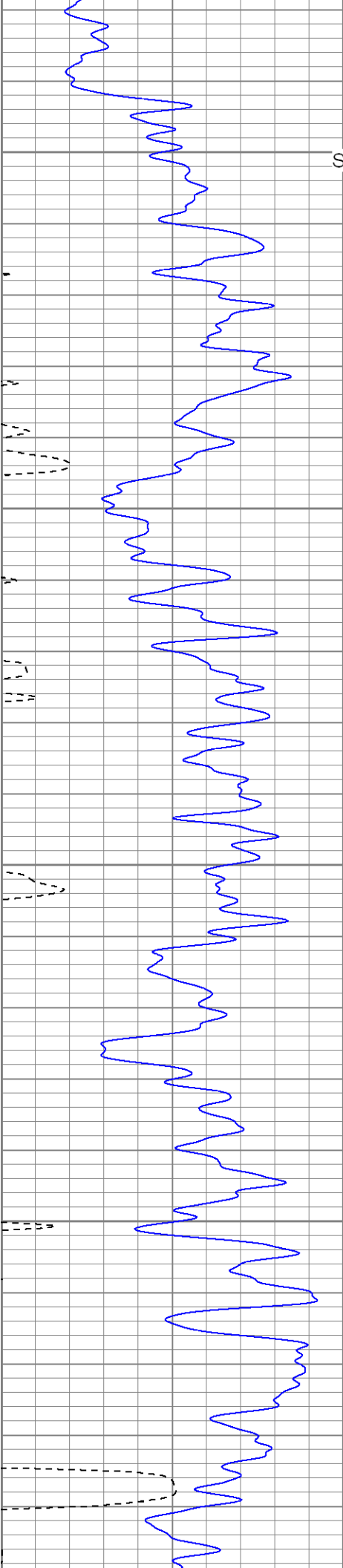
550

600

650





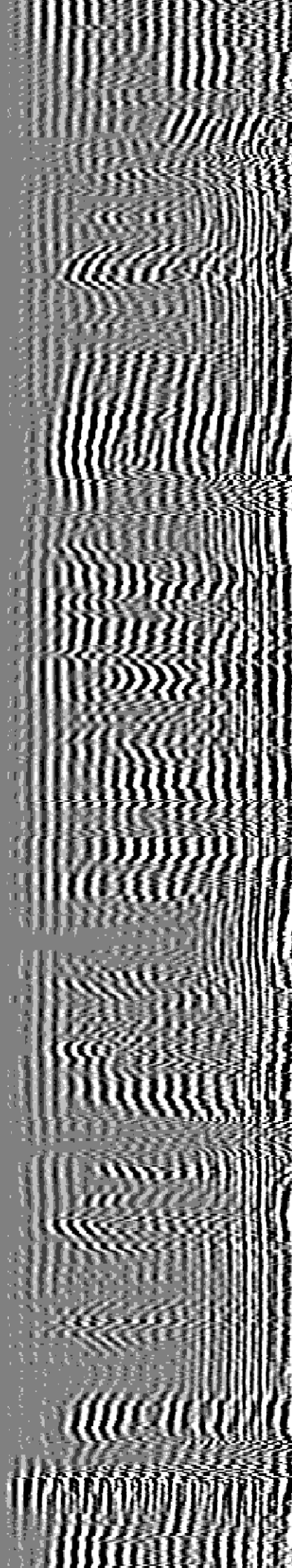
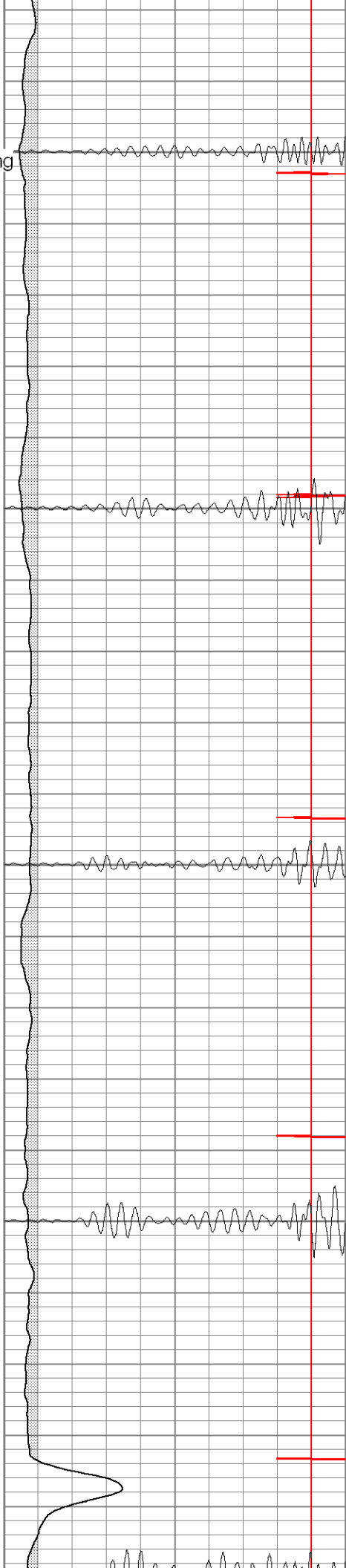


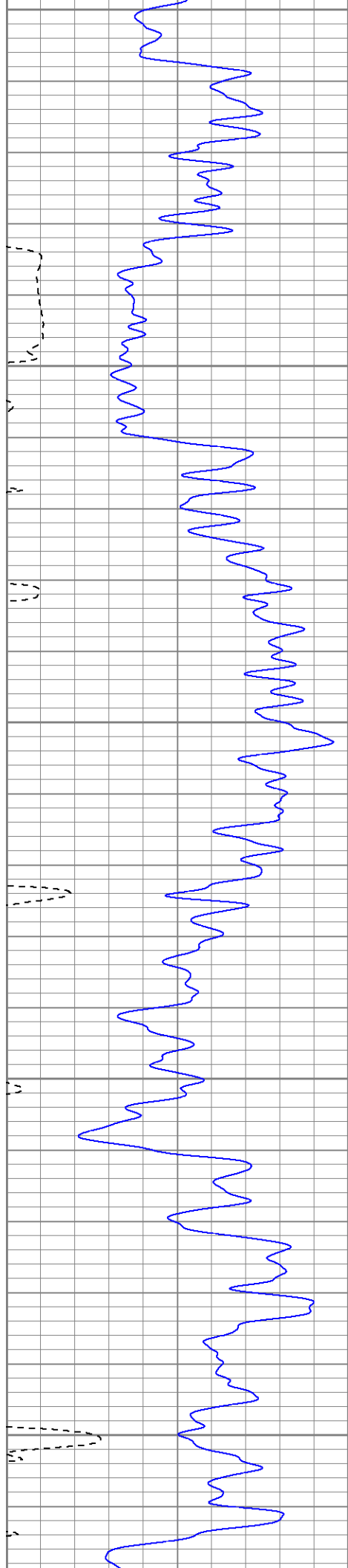
Surface Casing

950

1000

1050





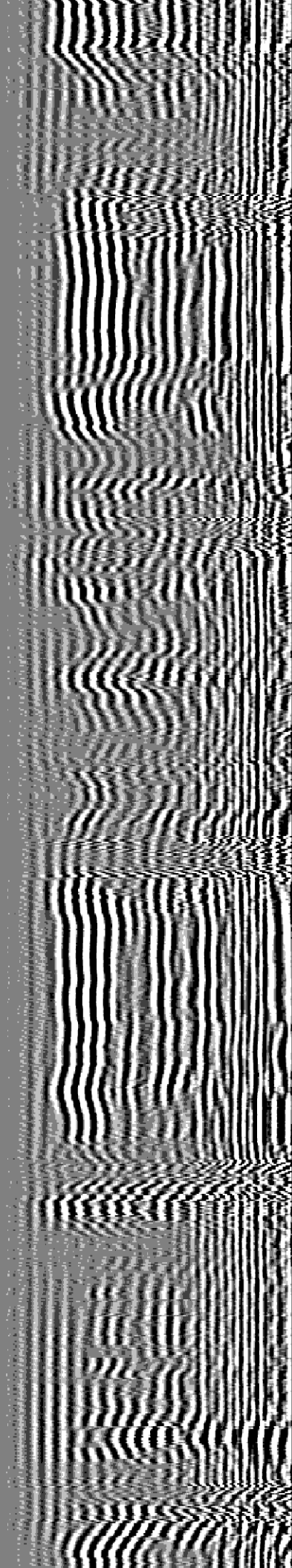
1100

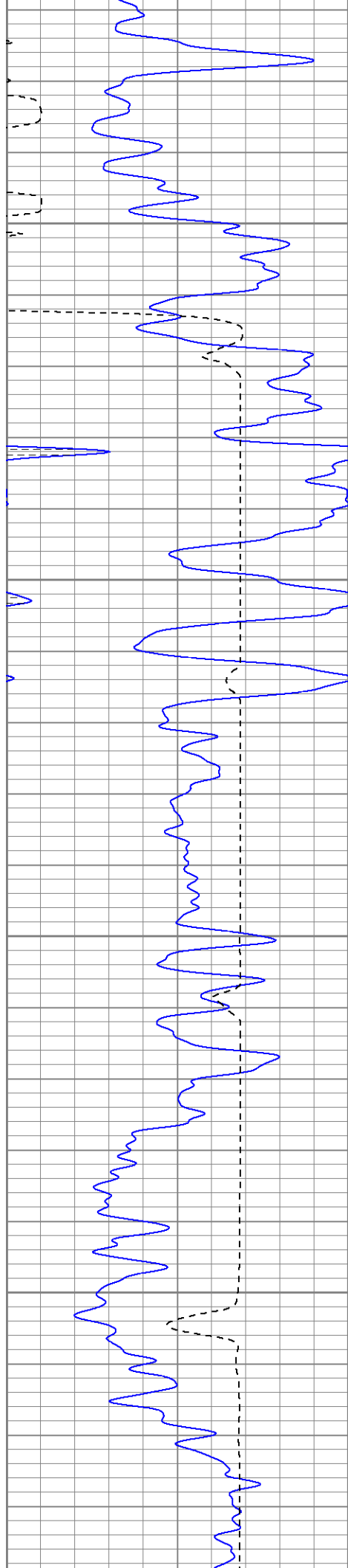
1150

1200

1250

1300



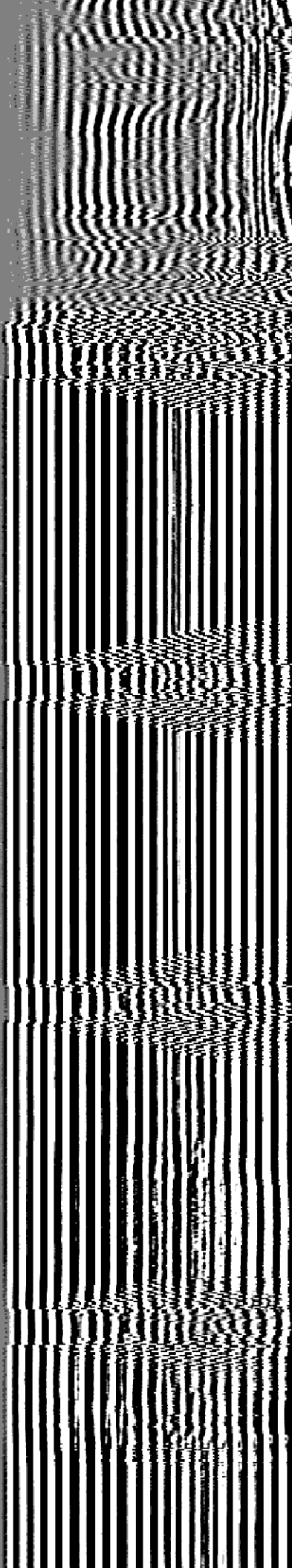
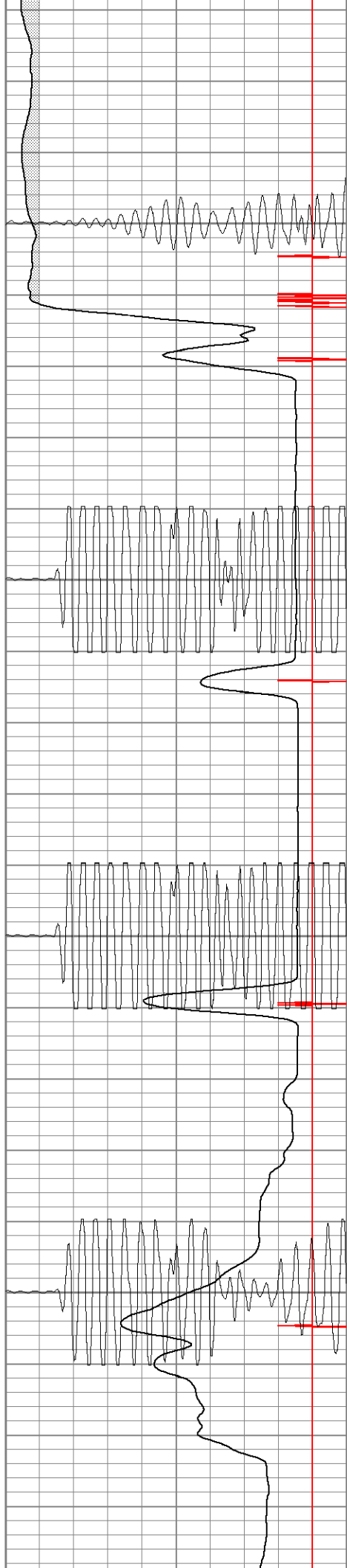


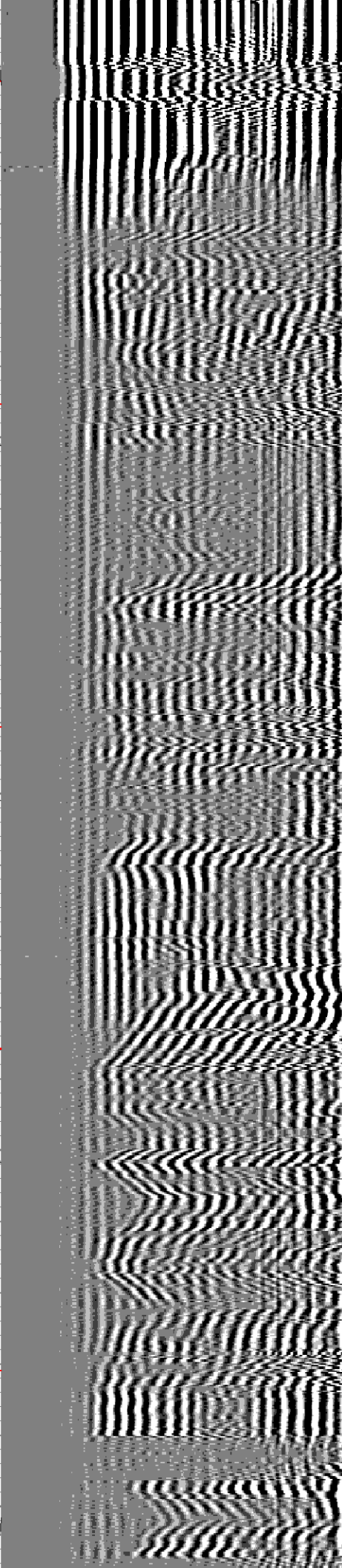
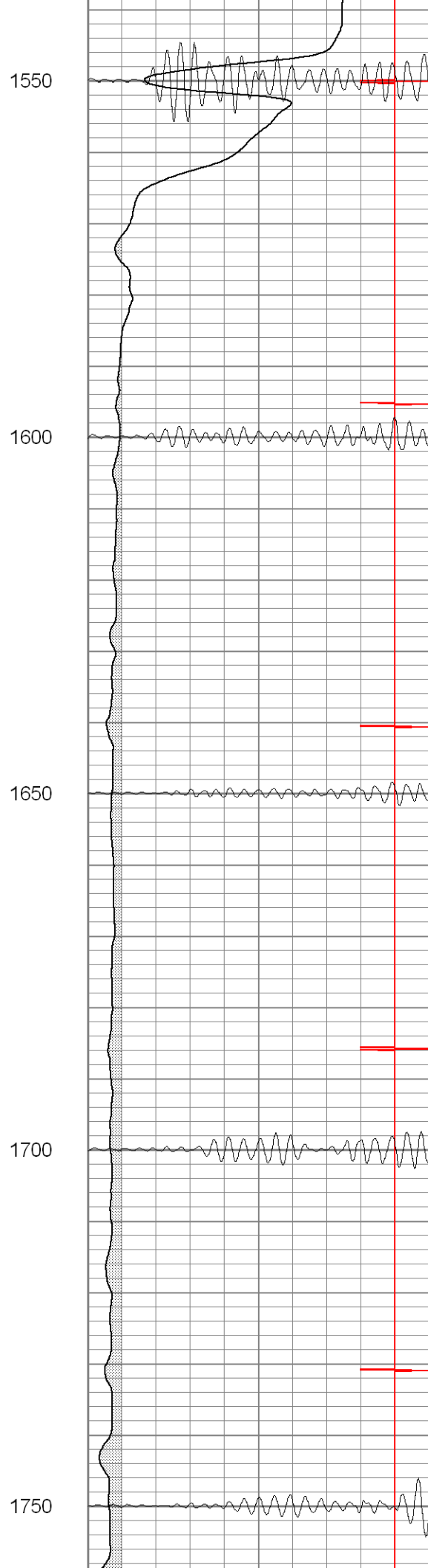
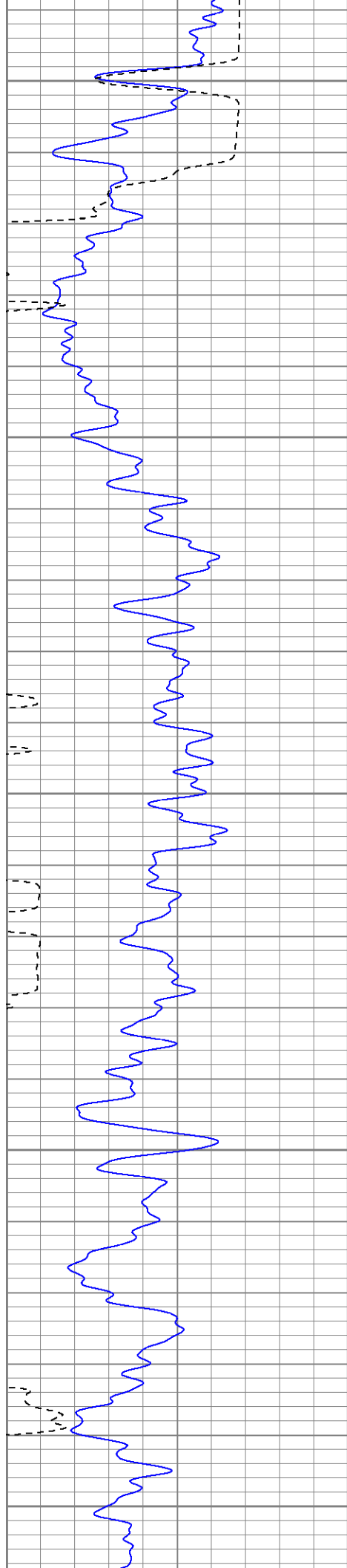
1350

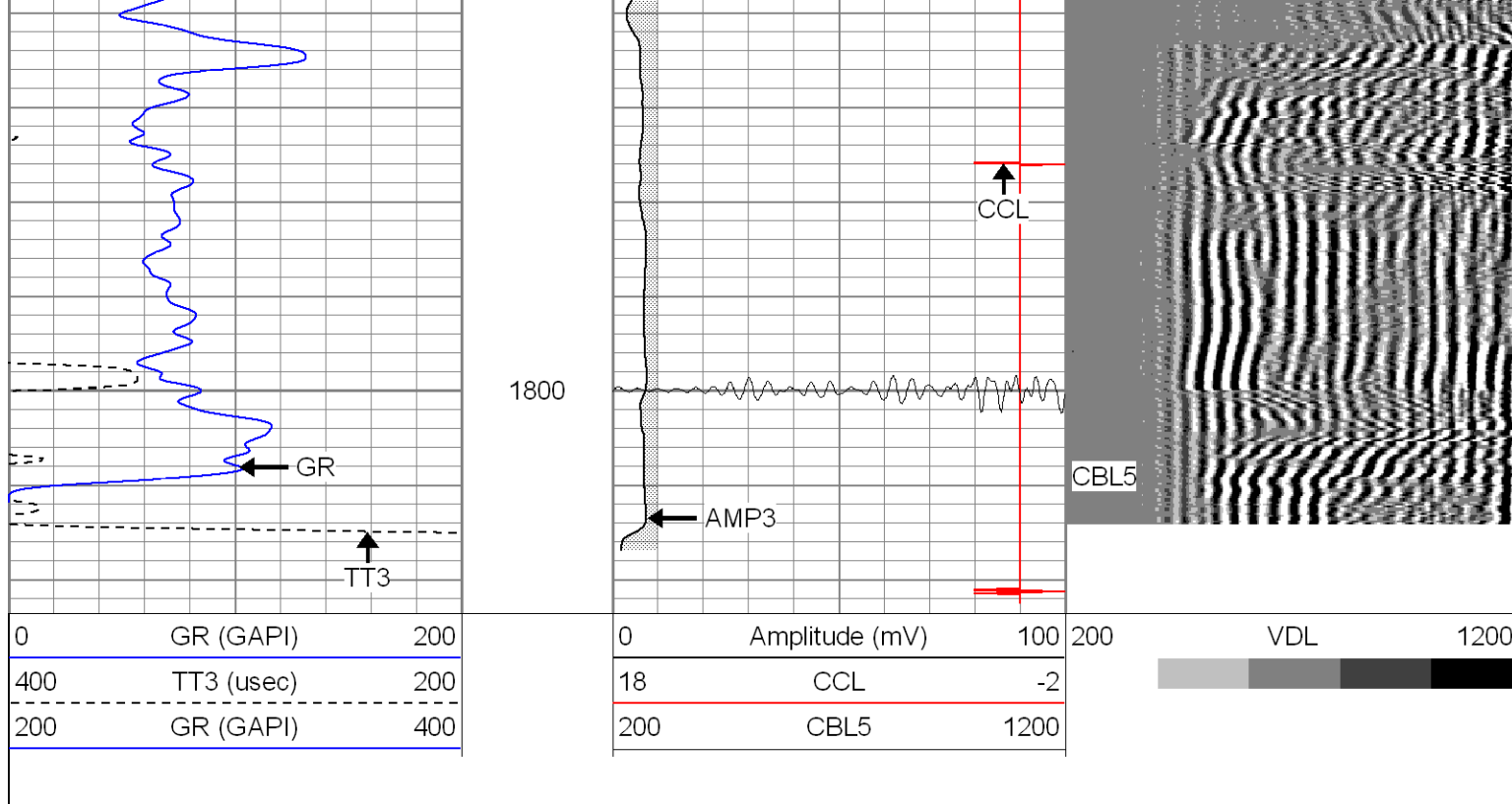
1400

1450

1500





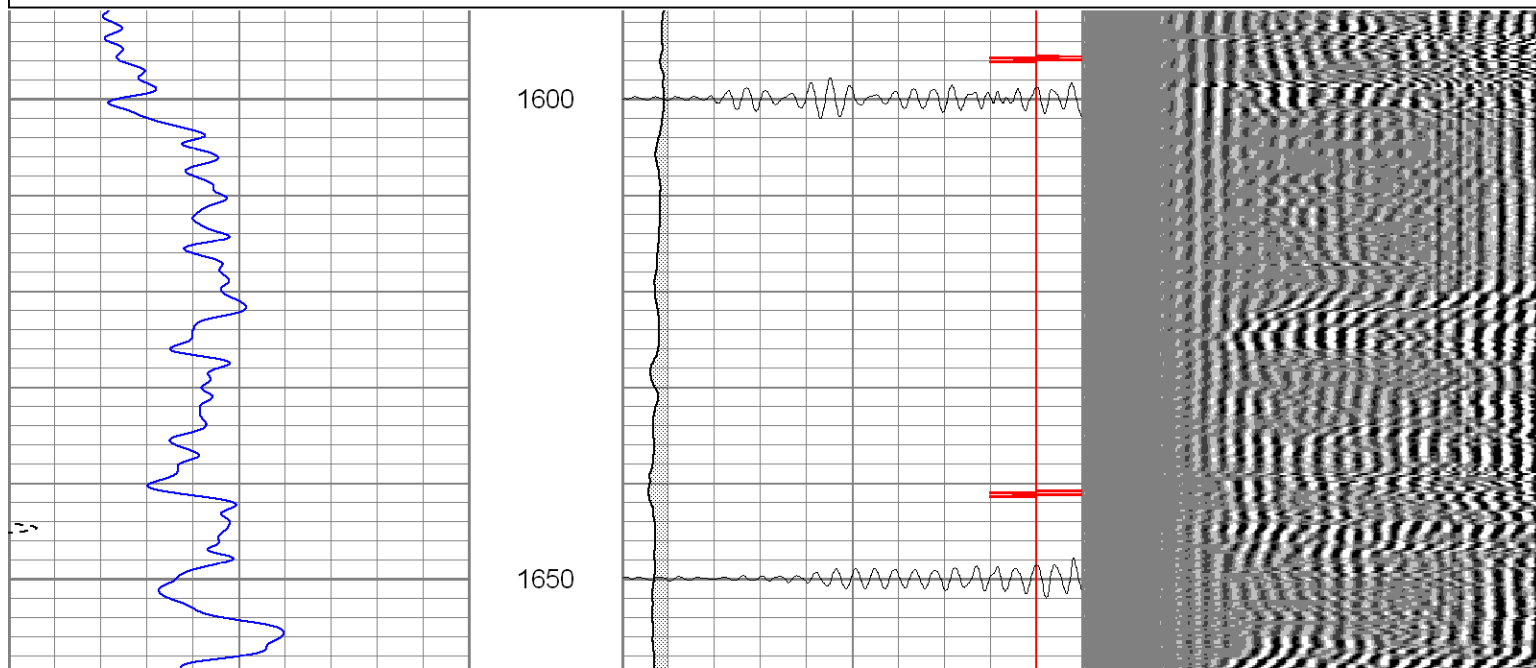
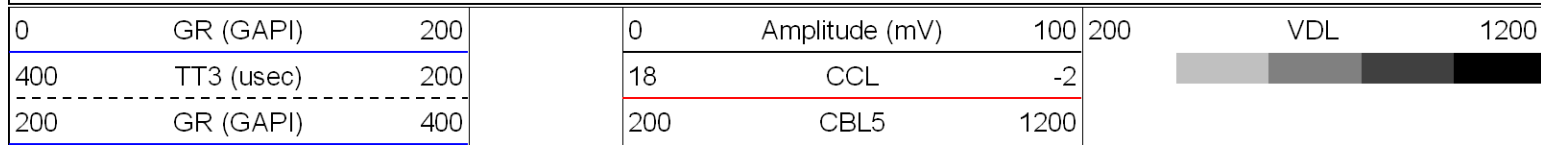


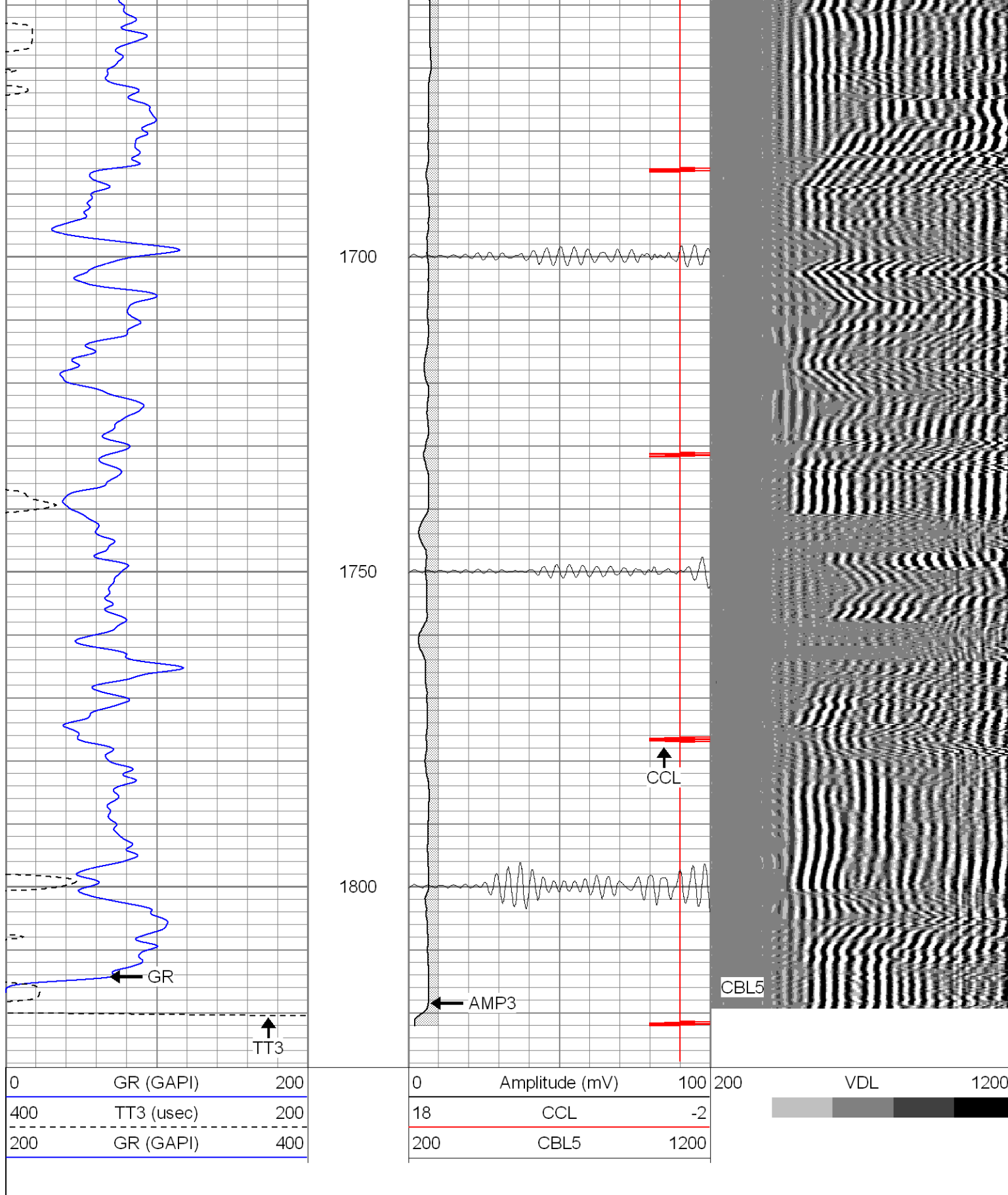
SUPERIOR

Black Lick, Pa.
Mercer, Pa.
Wooster, Oh.
Cleveland, Ok.
Trinidad, Co.

Repeat Section 0 PSI

Database File: xtone25-047308b.db
Dataset Pathname: pass1
Presentation Format: cblrt
Dataset Creation: Thu Jul 03 10:39:40 2008 by Log Open-Cased 071220
Charted by: Depth in Feet scaled 1:240





Calibration Report

Database File: xtone25-047308b.db
Dataset Pathname: pass1
Dataset Creation: Thu Jul 03 10:39:40 2008 by Log Open-Cased 071220

Cement Bond Log Calibration Report

Serial Number: Titan5
Tool Model: T5
Performed: Thu Jul 03 10:23:25 2008

Depth: 2424.98 ft
Casing Diameter: 5.5 in

	3' Spacing	5' Spacing	
Signal Zero:	1	1	mV
Calibrated Amplitude:	85	85	mV
Reading at Signal Zero:	-0.02	0	V
Reading in Free Pipe:	1.49	2.4	V
Gain:	55.6291	35	
Offset:	2.11258	1	

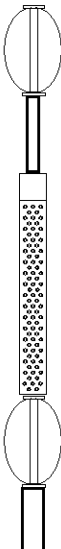
Gamma Ray Calibration Report

Serial Number: Titan5
Tool Model: T2
Performed: Wed Jul 02 08:27:42 2008

Calibrator Value: 200.0 GAPI

Background Reading: 54.0 cps
Calibrator Reading: 219.0 cps

Sensitivity: 0.9900 GAPI/cps

Sensor	Offset (ft)	Schematic	Description	Len (ft)	OD (in)	Wt (lb)
GR	13.64		X	3.00	1.69	25.00
			GR-T2 (Titan5)	2.52	1.69	25.00
WVF5	9.49		CBL-T5 (Titan5)	7.23	2.44	110.00
WVF3	8.49					
CCL	0.83		X	3.00	1.69	25.00
			CCL-T6 (Titan6)	2.15	2.75	15.00
		Dataset: xtone25-047308b.db: field/well/run1/pass1 Total Length: 17.91 ft Total Weight: 200.00 lb O.D. 2.75 in				