



SUPERIOR
WELL SERVICES
Black Lick, Pa.
Mercer, Pa.
Wooster, Oh.
Cleveland, Ok.
Trinidad, Co.

CEMENT BOND LOG

Company XTO Energy Inc.
Well New Elk 25-04
Field Purgatorie River
County Las Animas State CO

Location: API # : 05 071 09535 00

SEC 25 TWP 33S RGE 68W

Permanent Datum Ground Level Elevation 7765'
Log Measured From Ground Level
Drilling Measured From Ground Level

Other Services
Elevation
K.B. -----
D.F. -----
G.L. 7765'

Date Run Number 7-1-08

Depth Driller 2200'

Bottom Logged Interval 2134'

Top Log Interval Surface

Open Hole Size 7 7/8

Type Fluid Water

Density / Viscosity

Max. Recorded Temp. 75.7

Estimated Cement Top 3.00 P.M.

Time Well Ready 3.30 P.M.

Time Logger on Bottom 1070-1

Equipment Number

Location Trinidad

Recorded By C. Sinerros

Witnessed By Mr. Steve Dominguez

Borehole Record Bit From To Size Weight From To

Casing Record Size Wgt/Ft Top Bottom

Surface String 8 5/8" 00' 901'

Prot. String 5.5" 00' 2181'

Production String

Liner

<<< Fold Here >>>

All interpretations are opinions based on inferences from electrical or other measurements and we cannot and do not guarantee the accuracy or correctness of any interpretation, and we shall not, except in the case of gross or willful negligence on our part, be liable or responsible for any loss, costs, damages, or expenses incurred or sustained by anyone resulting from any interpretation made by any of our officers, agents or employees. These interpretations are also subject to our general terms and conditions set out in our current Price Schedule.

Comments

Well Directions:
Second Bosque entrance, straight across railroad tracks, at Y stay right to Apache canyon, follow main road thru five drive thru locations, take next right up hill, dead end on location.



SUPERIOR
Black Lick, Pa.
Mercer, Pa.
Wooster, Oh.
Cleveland, Ok.
Trinidad, Co.

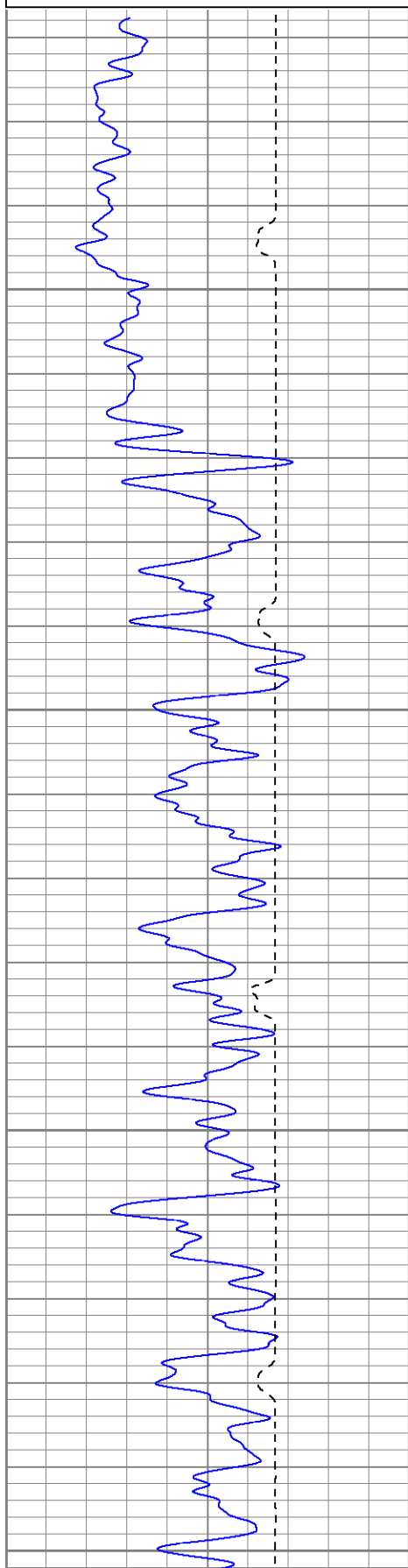
1000 PSI

Database File: xtone25047108b.db
Dataset Pathname: pass2.1
Presentation Format: cblrt
Dataset Creation: Tue Jul 01 16:33:42 2008 by Calc Open-Cased 070814
Charted by: Depth in Feet scaled 1:240

0	GR (GAPI)	200
400	TT3 (usec)	200

0	AMP3 (mV)	100
18	CCL	-2
100	CBL5	1200

200 Variable Density 1200

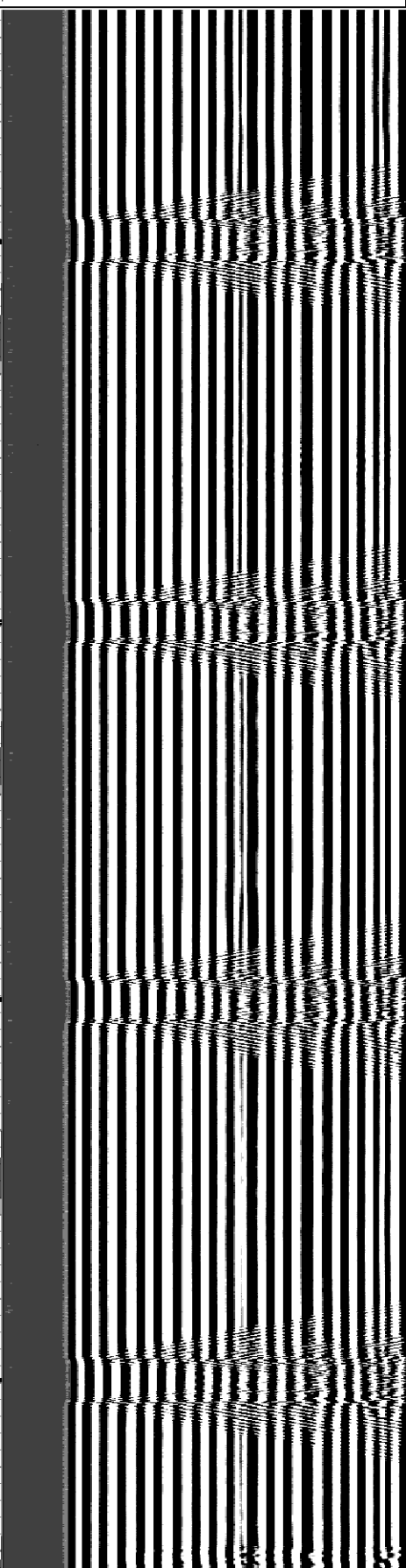


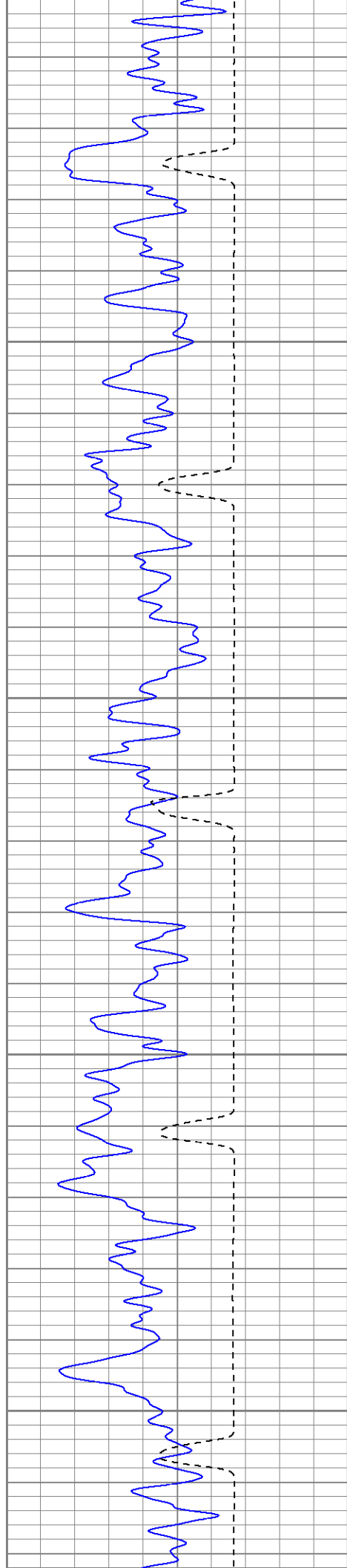
50

100

150

200



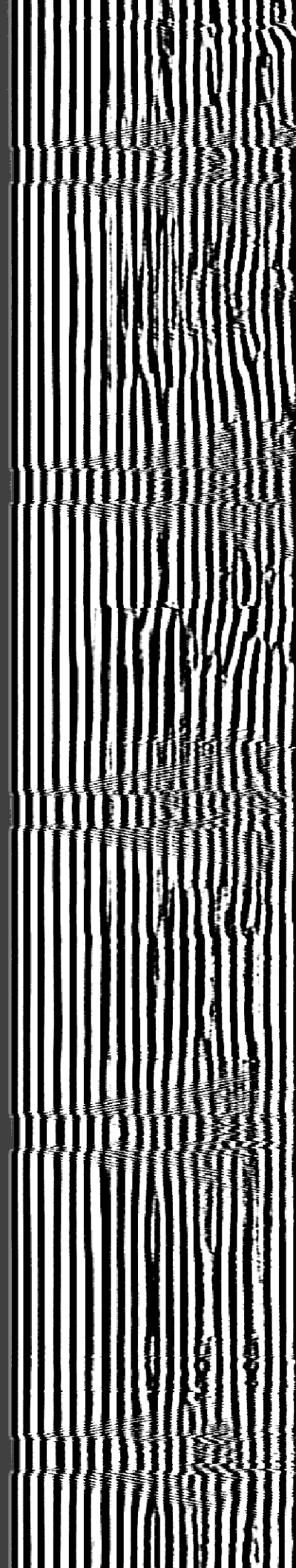
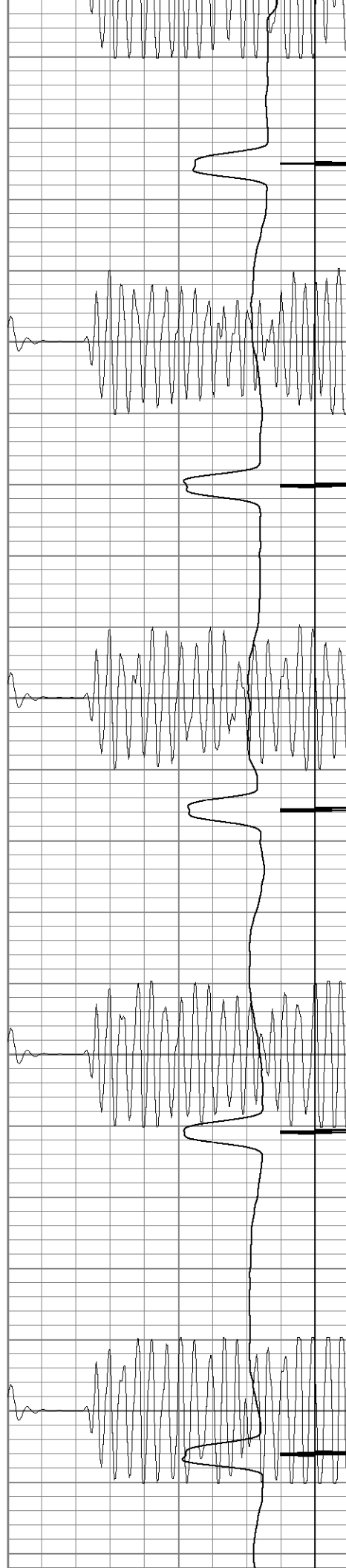


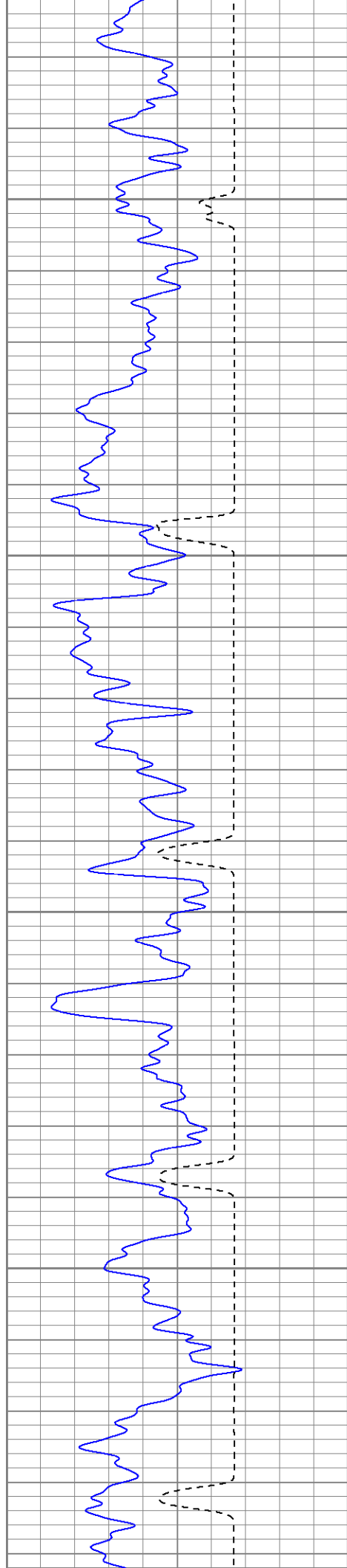
250

300

350

400



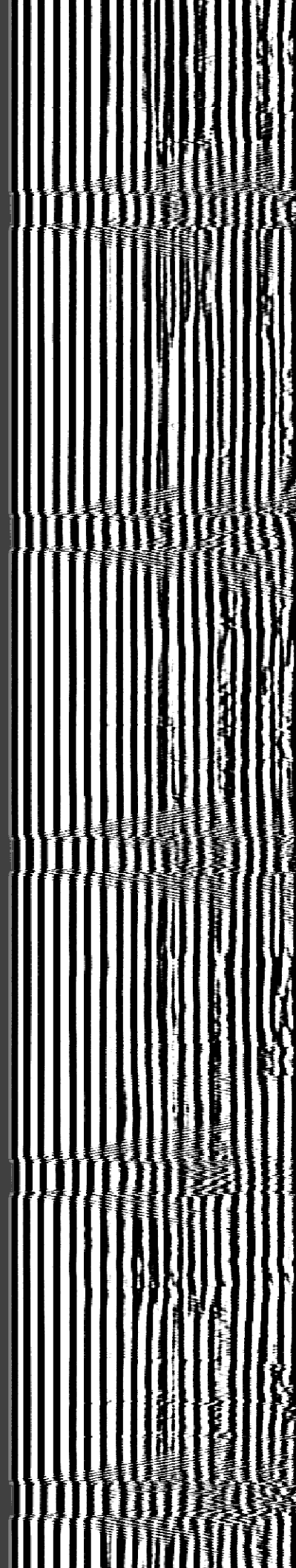
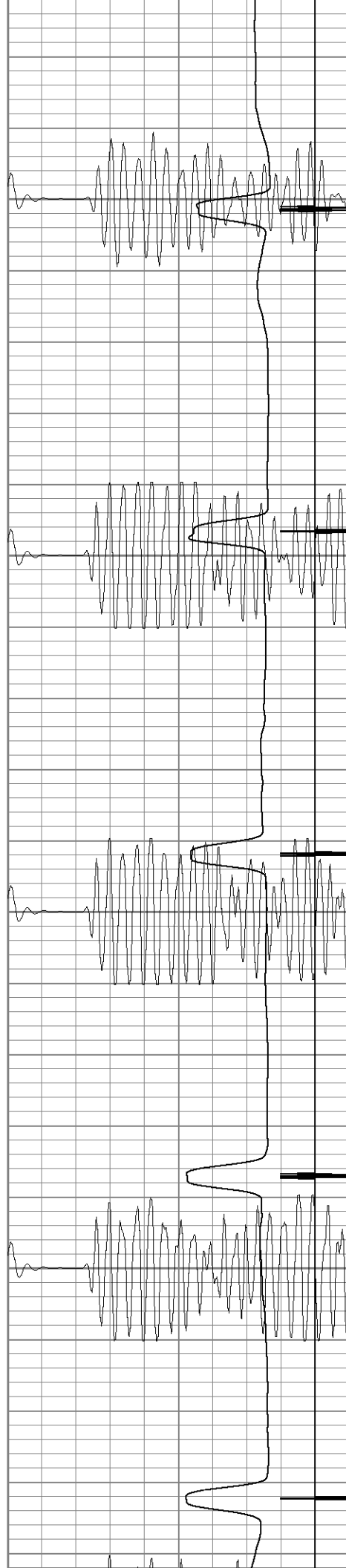


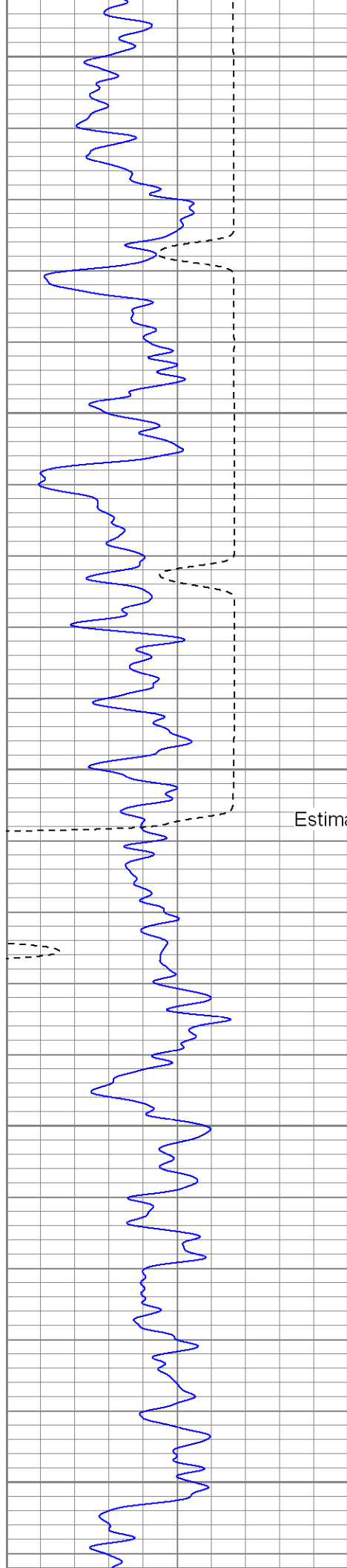
450

500

550

600





650

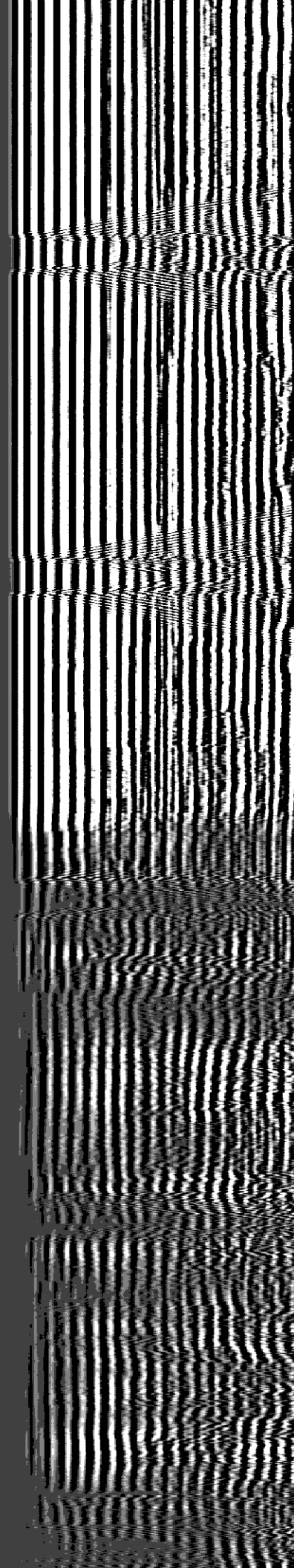
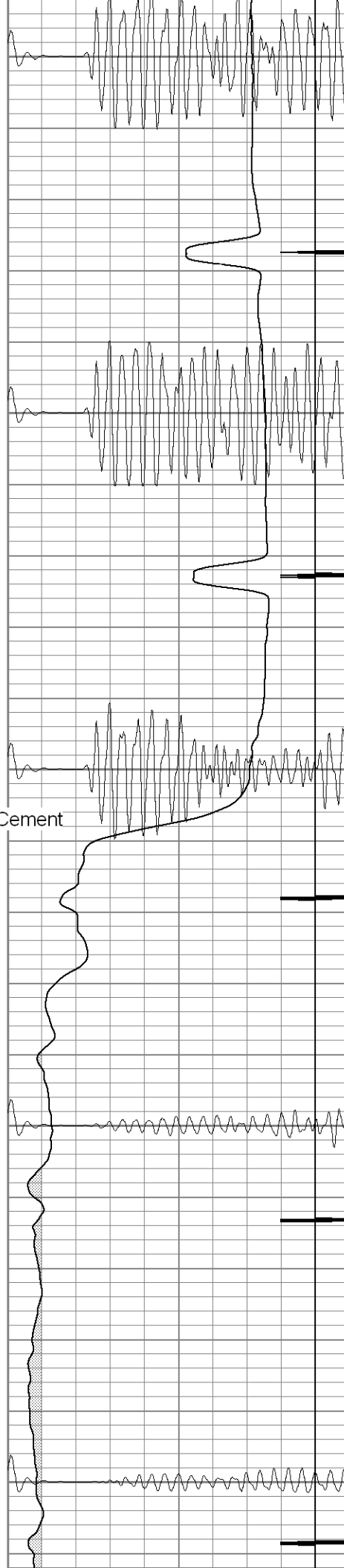
700

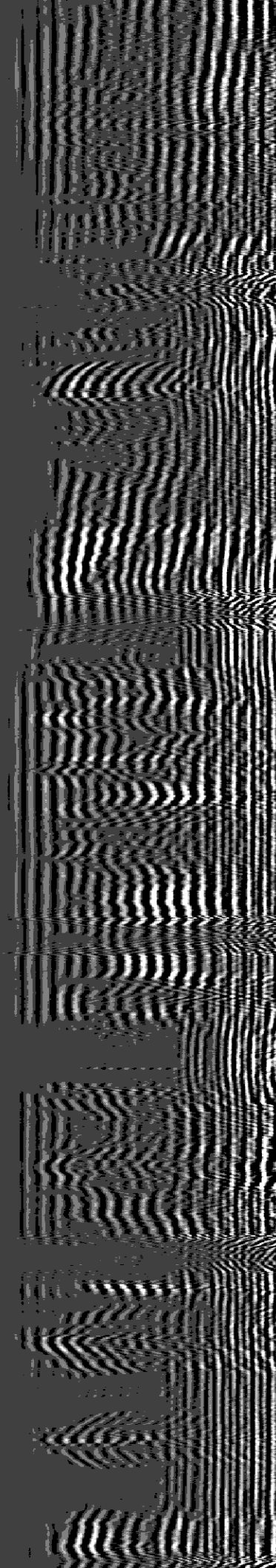
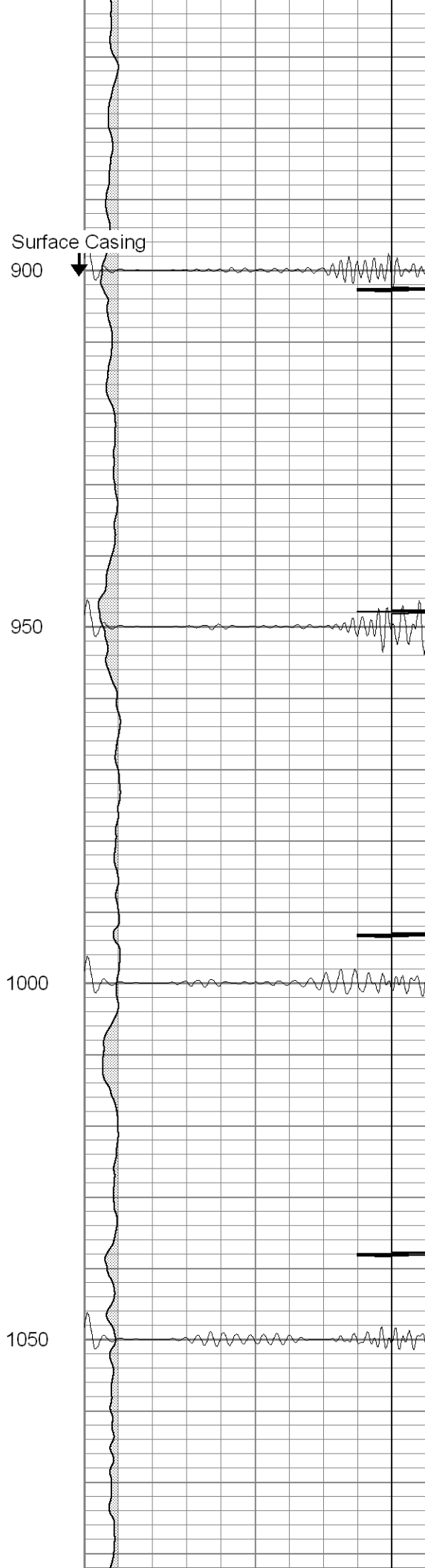
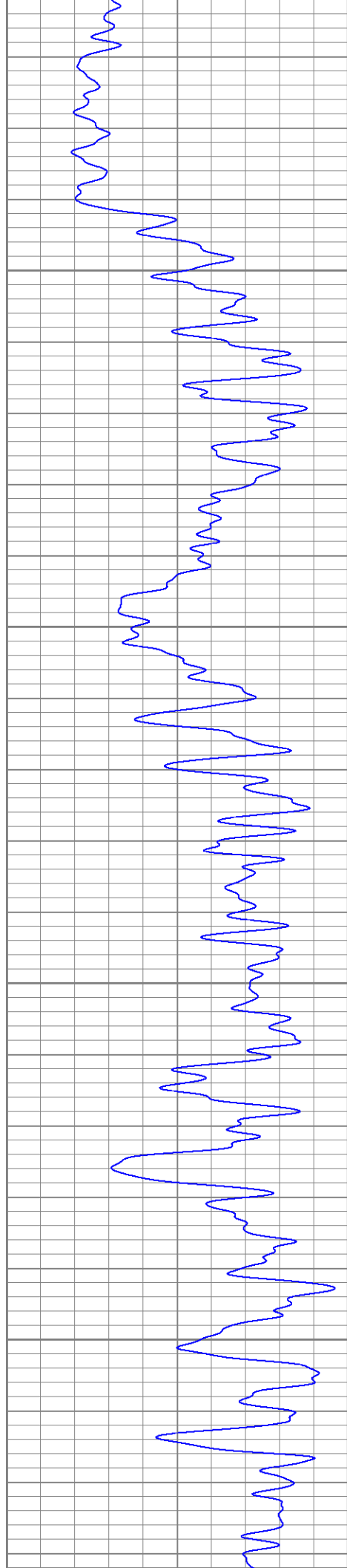
750

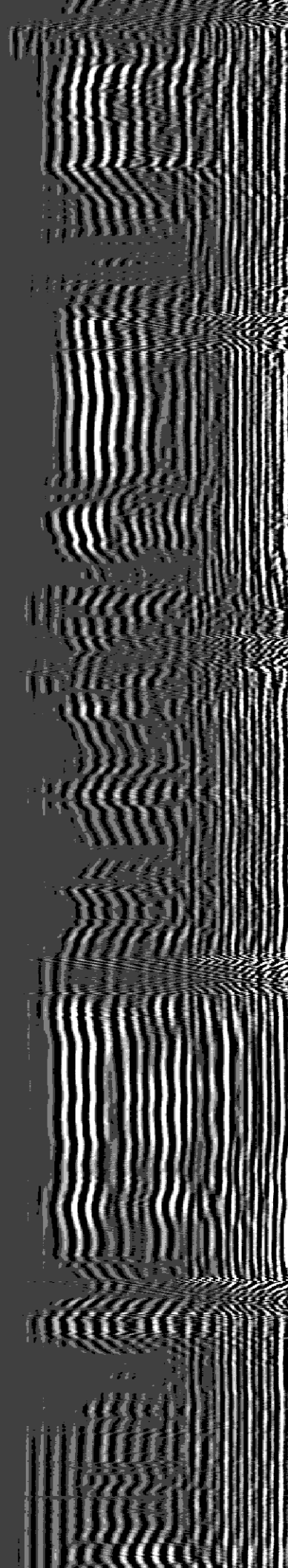
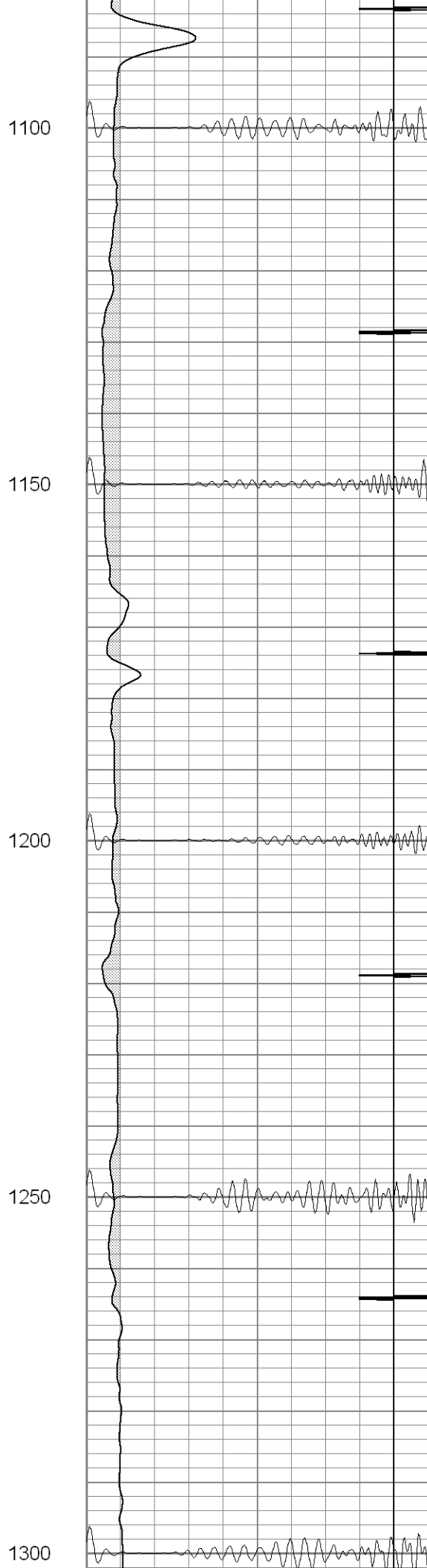
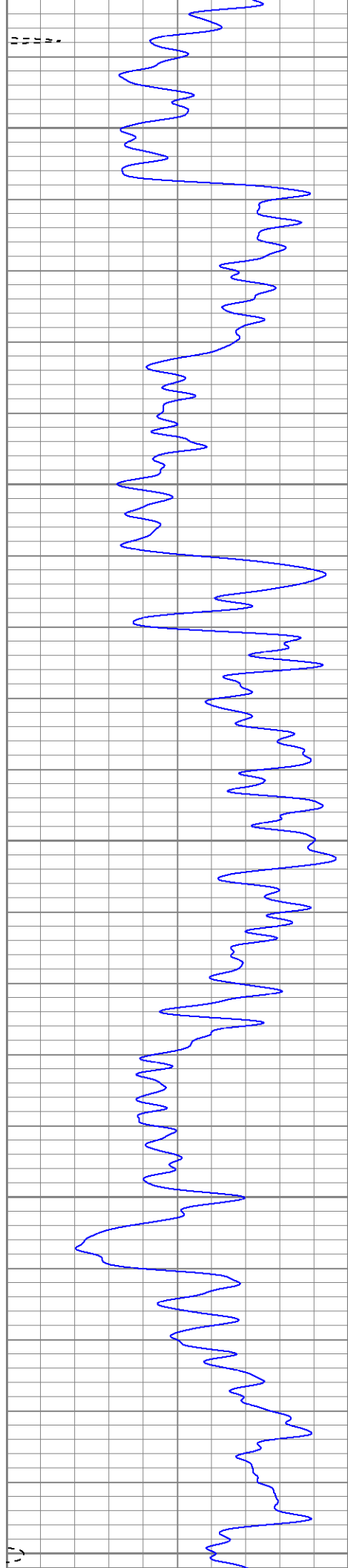
Estimated Top of Cement

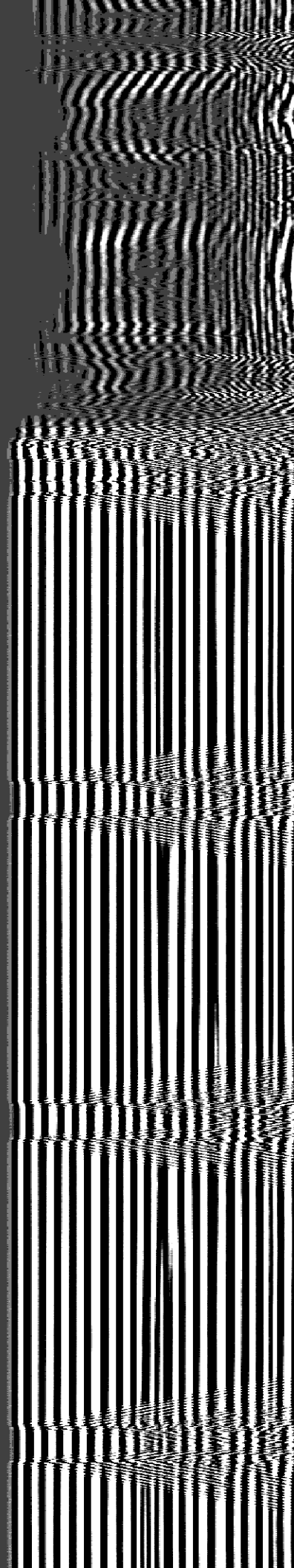
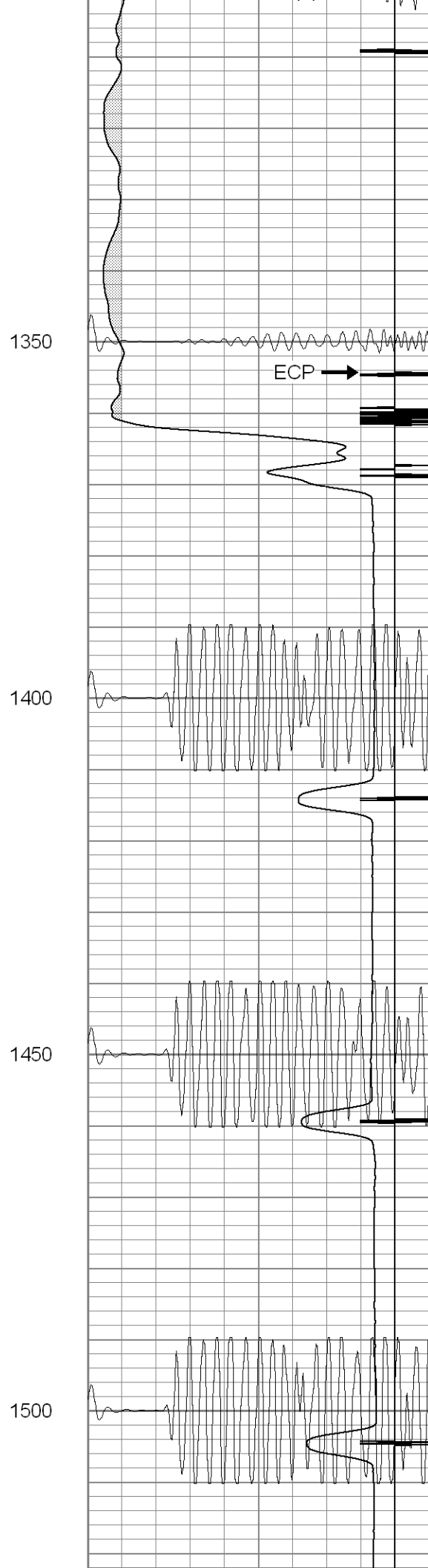
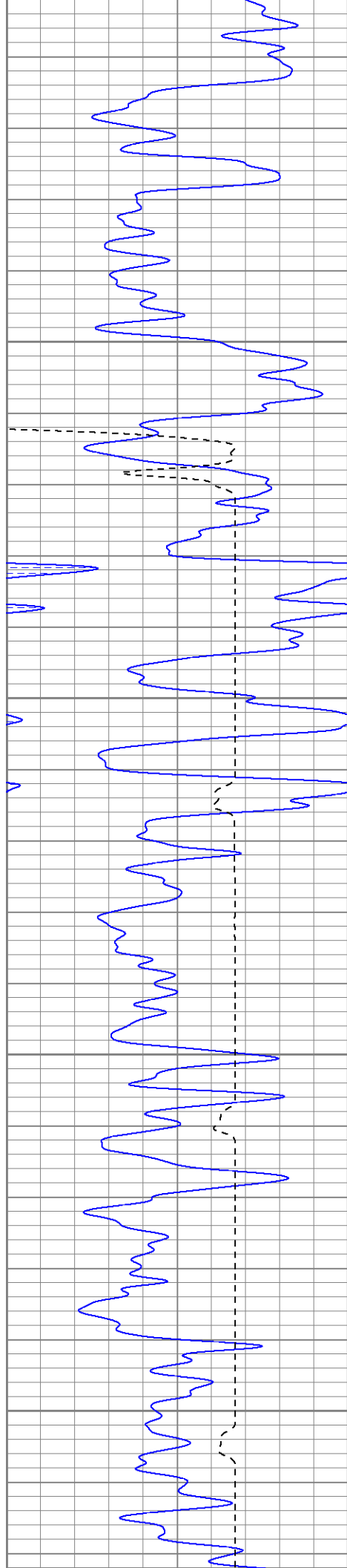
800

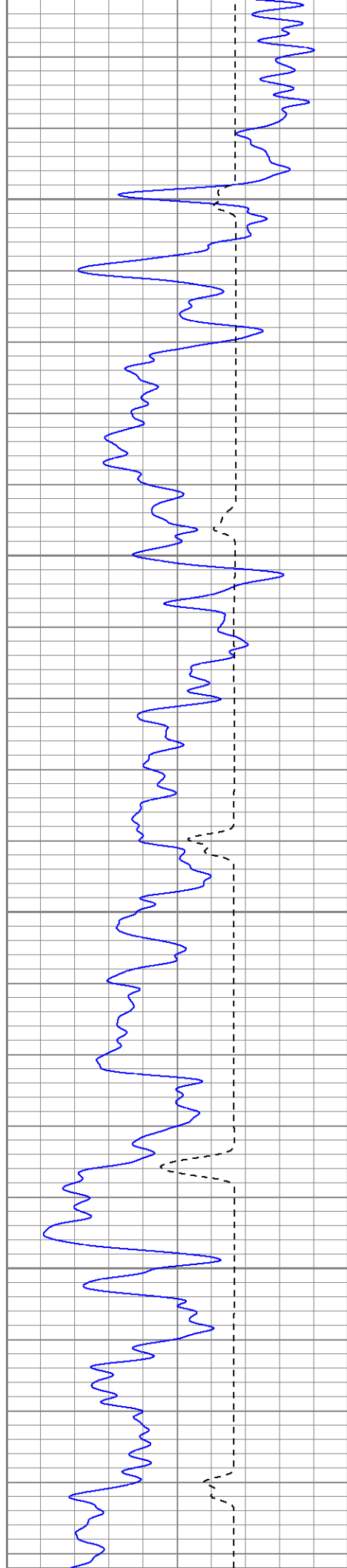
850









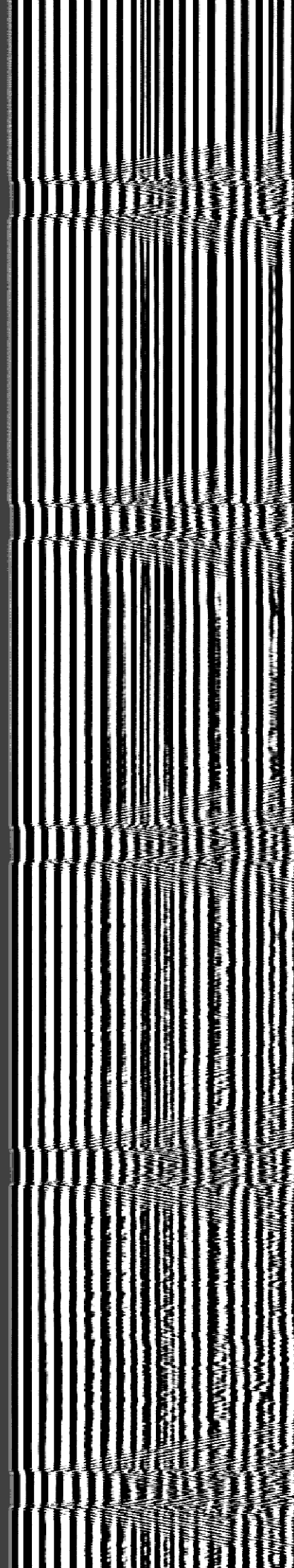
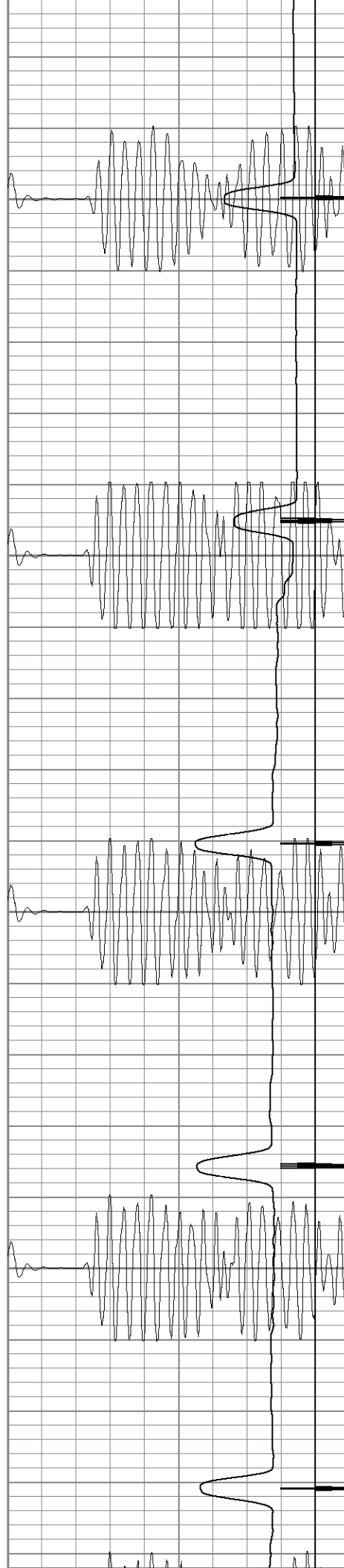


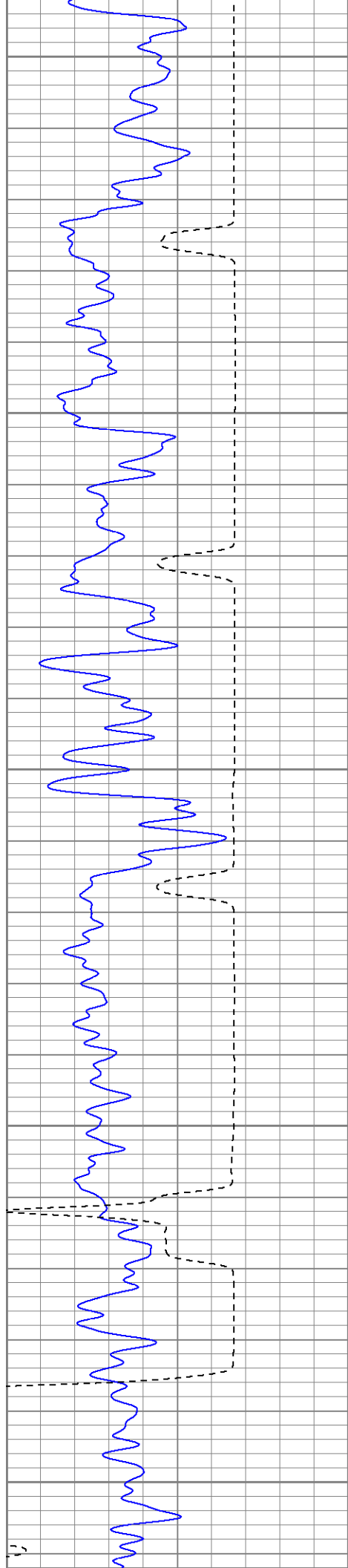
1550

1600

1650

1700





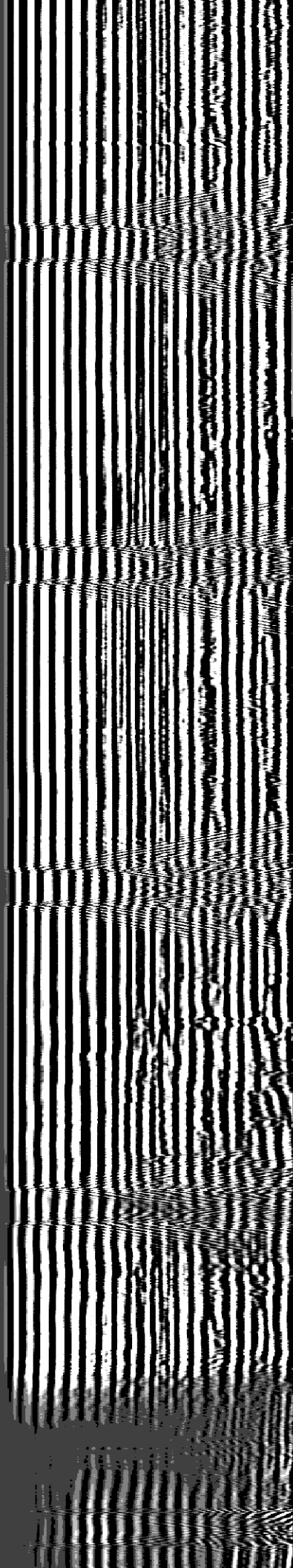
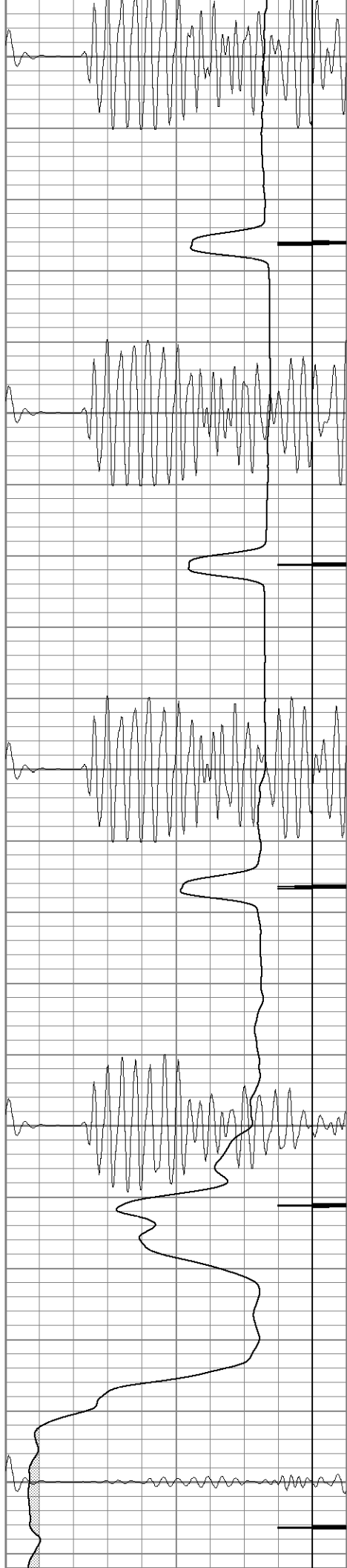
1750

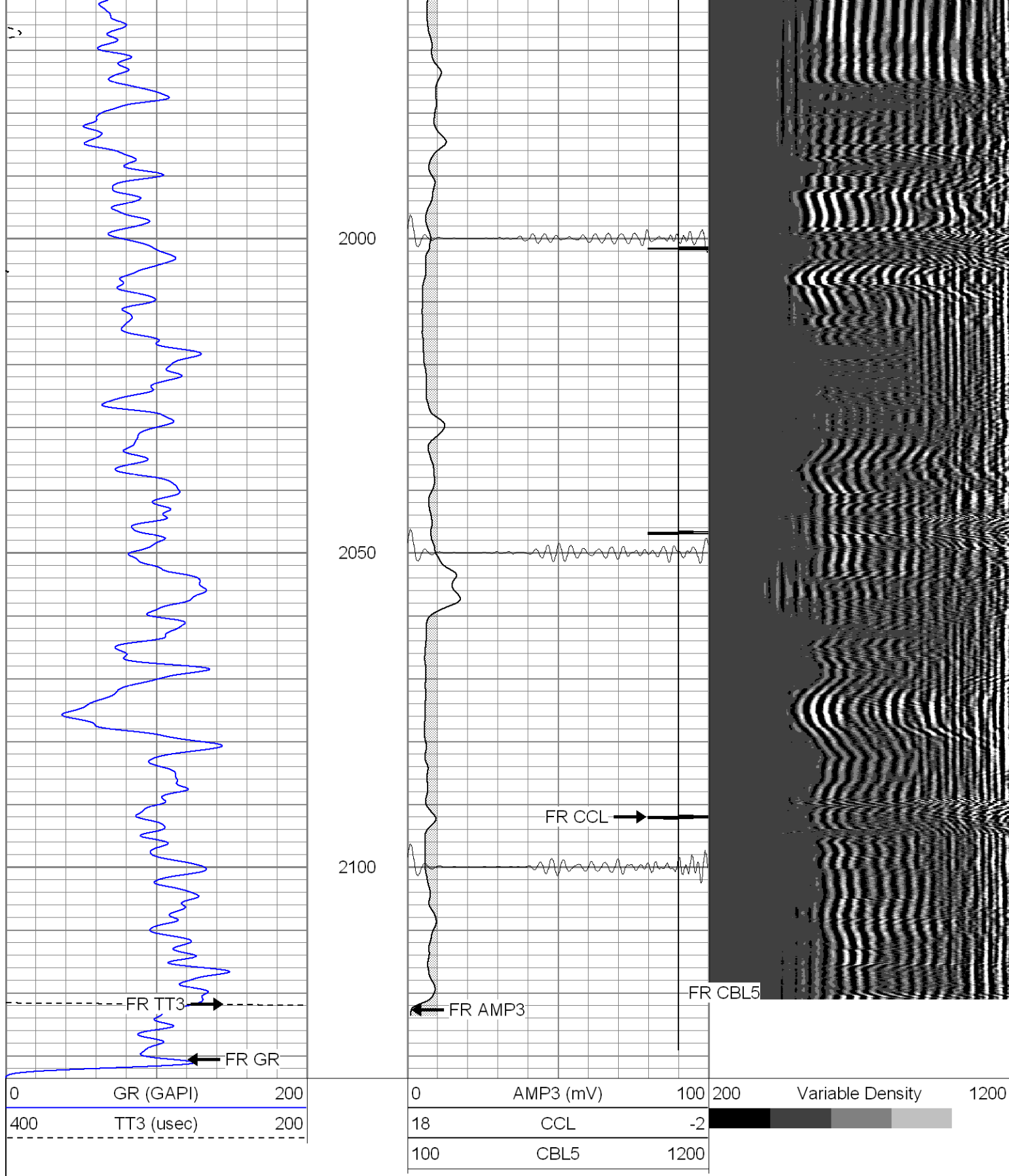
1800

1850

1900

1950





SUPERIOR

Black Lick, Pa.
Mercer, Pa.
Wooster, Oh.
Cleveland, Ok.
Trinidad, Co.

Repeat Pass

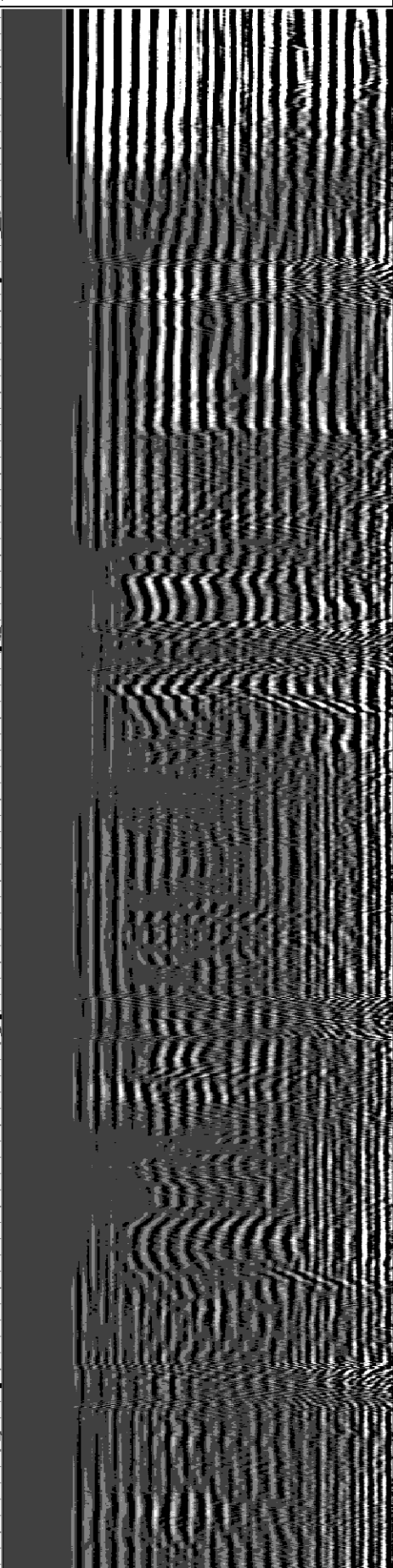
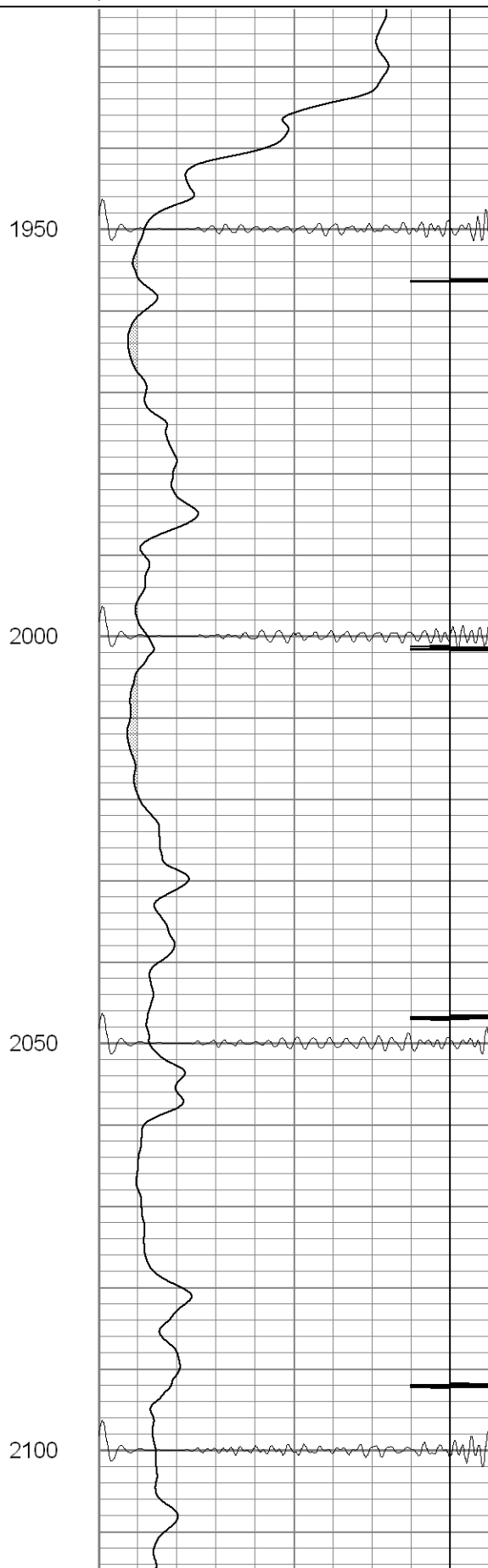
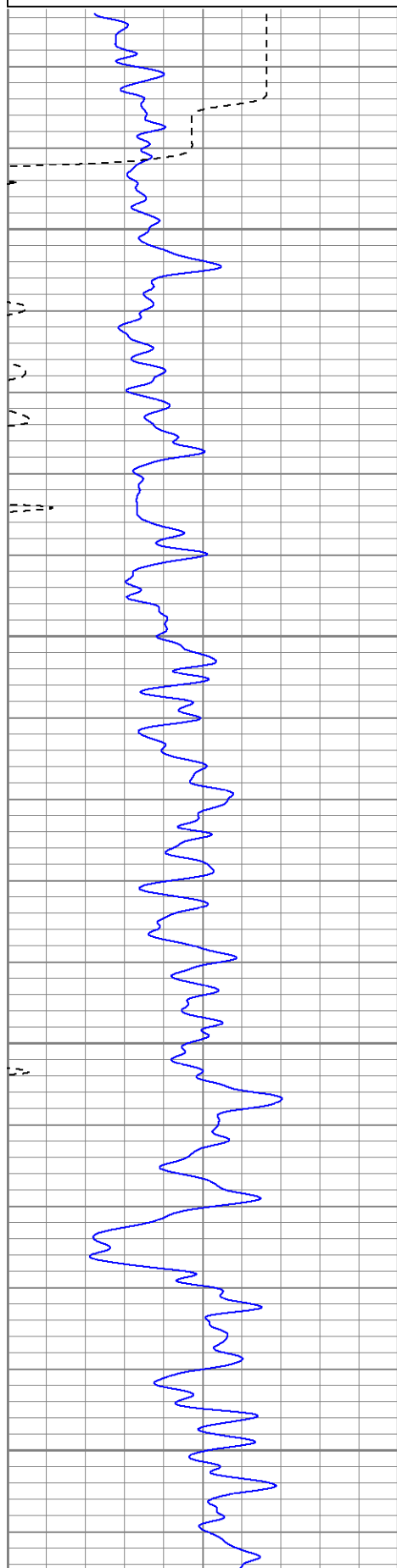
Database File: xtone25047108b.db

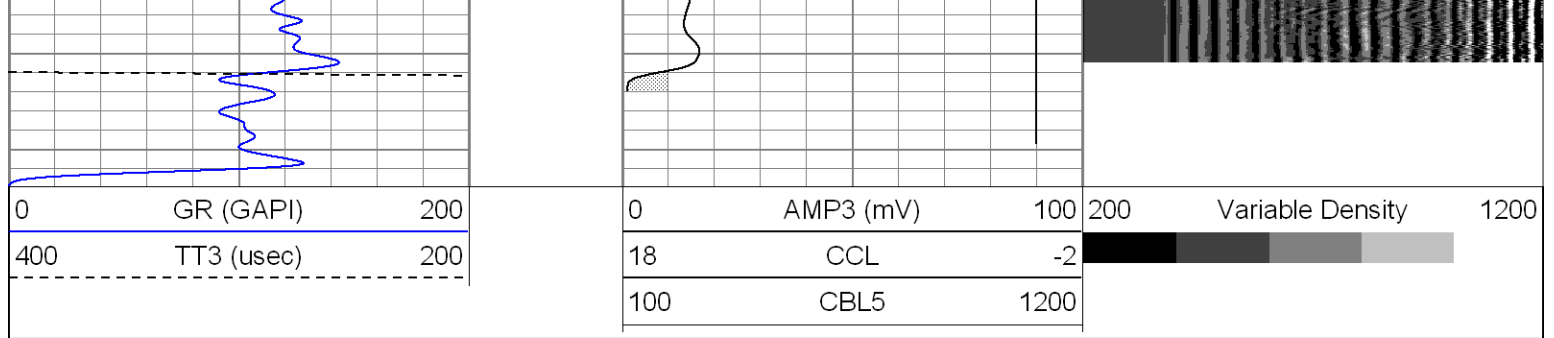
Dataset Pathname: pass1.1

0	GR (GAPI)	200
400	TT3 (usec)	200

0	AMP3 (mV)	100
18	CCL	-2
100	CBL5	1200

200 Variable Density 1200





Calibration Report				
Database File:	xtone25047108b.db			
Dataset Pathname:	pass1			
Dataset Creation:	Tue Jul 01 15:36:06 2008 by Log Open-Cased 070814			
Gamma Ray Calibration Report				
Serial Number:	2.75			
Tool Model:	Titan2.75			
Performed:	Tue Jun 10 12:49:53 2008			
Calibrator Value:	1.0	GAPI		
Background Reading:	0.0	cps		
Calibrator Reading:	1.0	cps		
Sensitivity:	1.0000	GAPI/cps		
Cement Bond Log Calibration Report				
Serial Number:	Titan4			
Tool Model:	T4			
Performed:	Tue Jun 10 12:48:42 2008			
Depth:	78.9548	ft		
Casing Diameter:	5.5	in		
	3' Spacing	5' Spacing		
Signal Zero:	1	1	mV	
Calibrated Amplitude:	82	82	mV	
Reading at Signal Zero:	-0.00383301	-0.00368652	V	
Reading in Free Pipe:	1.57312	1.97876	V	
Gain:	51.3649	40.8586		
Offset:	1.19688	1.15063		

Sensor	Offset (ft)	Schematic	Description	Len (ft)	OD (in)	Wt (lb)
			None	0.75	1.50	5.00
			X	3.00	1.69	25.00
WVF5	12.82		CBL-T4 (Titan4) Titan4	8.15	2.25	110.00
WVF3	11.82					

CCL	4.27		X	3.00	1.69	25.00
			CCL-Titan2.75 (2.75)	1.71	2.75	15.00
GR	1.42		GR-Titan2.75 (2.75)	3.77	2.75	25.00
<p>Dataset: xtone25047108b.db: field/well/run1/pass1 Total Length: 20.38 ft Total Weight: 205.00 lb O.D.: 2.75 in</p>						