



SUPERIOR
Black Lick, Pa.
Mercer, Pa.
Wooster, Oh.
Cleveland, Ok.
Trinidad, Co.

DUAL INDUCTION LOG

Company XTO Energy Inc.
Well New Elk 25-06
Field Purgatoire River
County Las Animas State Colorado

Location: API # : 05 071 09536 00

1615' FNL & 2119' FWL

SEC 25 TWP 33S RGE 68W

Other Services
CDL
NEUTRON

Elevation

Permanent Datum Ground Level Elevation 7743'
Log Measured From Ground Level
Drilling Measured From Ground Level

K.B. -----
D.F. -----
G.L. 7743'

Date 6-30-08

Run Number One

Depth Driller 2200'

Depth Logger 2200'

Bottom Logged Interval 2198'

Top Log Interval Surface Casing

Casing Driller 8 5/8" @ 918'

Casing Logger 912'

Bit Size 7 7/8"

Type Fluid in Hole Water

Density / Viscosity ///

pH / Fluid Loss ///

Source of Sample ///

Rm @ Meas. Temp ///

Rmf @ Meas. Temp ///

Rmc @ Meas. Temp ///

Source of Rmf / Rmc ///

Rm @ BHT ///

Time Circulation Stopped 1:00 A.M.

Time Logger on Bottom 3:30 A.M.

Maximum Recorded Temperature 117 DEG F

Equipment Number T697

Location Trinidad

Recorded By J. Cappellucci

Witnessed By Mr. Don Johnson

<<< Fold Here >>>

All interpretations are opinions based on inferences from electrical or other measurements and we cannot and do not guarantee the accuracy or correctness of any interpretation, and we shall not, except in the case of gross or willful negligence on our part, be liable or responsible for any loss, costs, damages, or expenses incurred or sustained by anyone resulting from any interpretation made by any of our officers, agents or employees. These interpretations are also subject to our general terms and conditions set out in our current Price Schedule.

Comments

Well Directions:
Second Bosque Entrance, straight across railroad tracks, at Y stay right to
Apache canyon, drive through 4 drive thru locations take next right,
at top of hill at Y stay left, dead end on location.



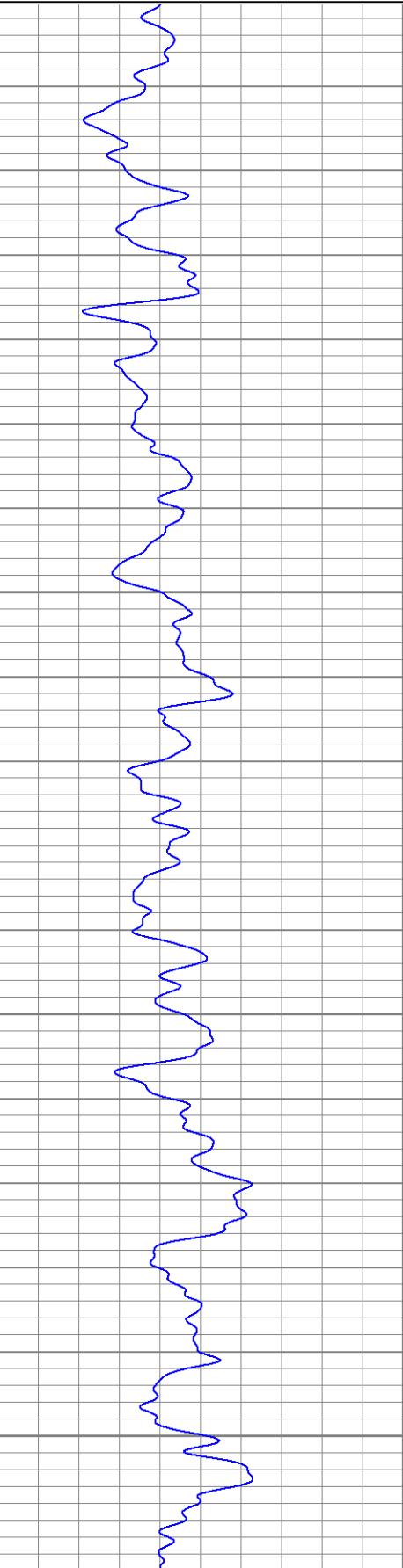
SUPERIOR
Black Lick, Pa.
Mercer, Pa.
Wooster, Oh.
Cleveland, Ok.
Trinidad, Co.

Main Pass

Database File: xtone2506.db
Dataset Pathname: pass2.1
Presentation Format: dil
Dataset Creation: Mon Jun 30 05:10:03 2008 by Calc Open-Cased 070814
Charted by: Depth in Feet scaled 1:240

0	GR (GAPI)	200
-200	SP (mV)	0

0.2	RILM (Ohm-m)	2000
0.2	RILD (Ohm-m)	2000
0.2	RLL3 (Ohm-m)	2000

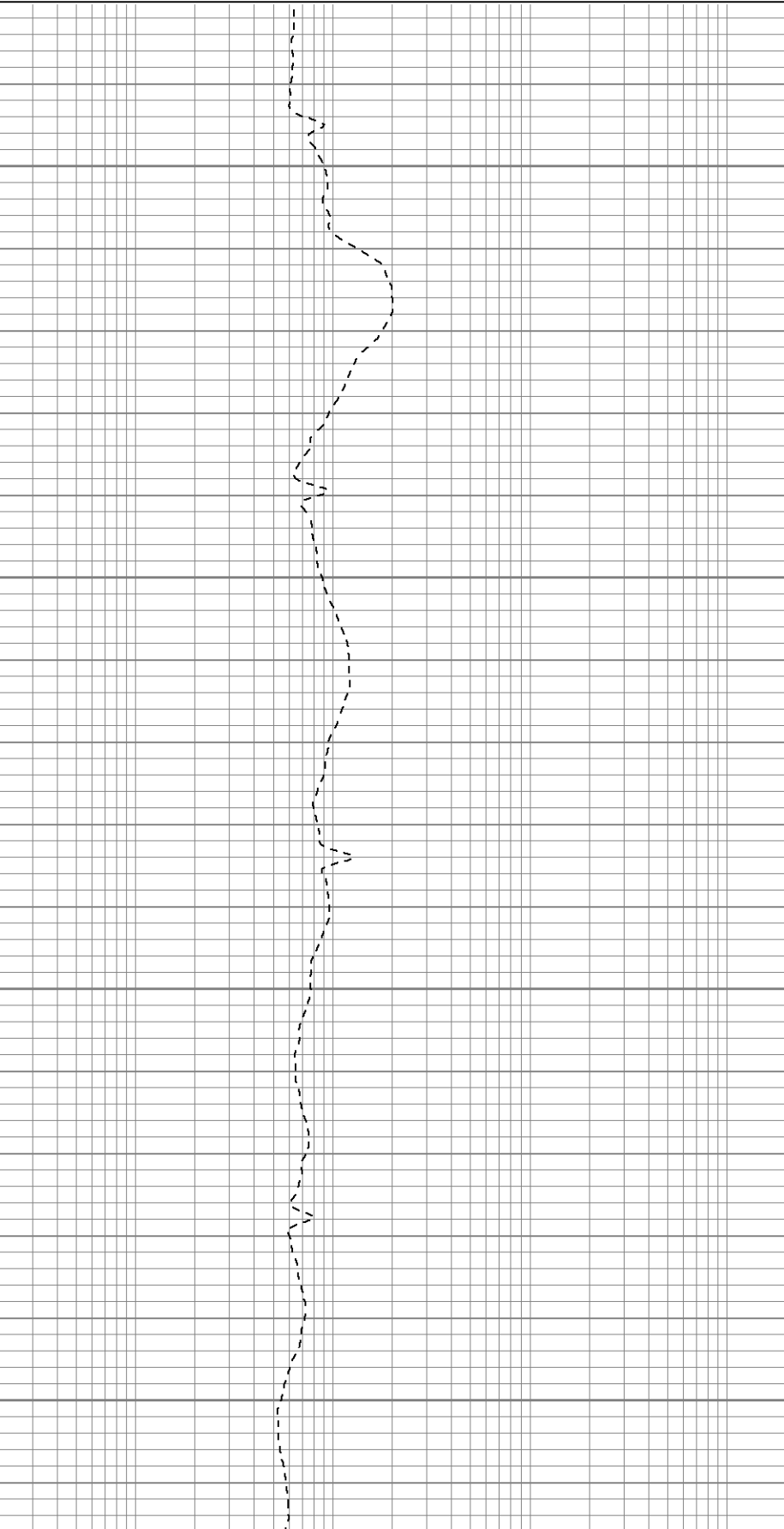


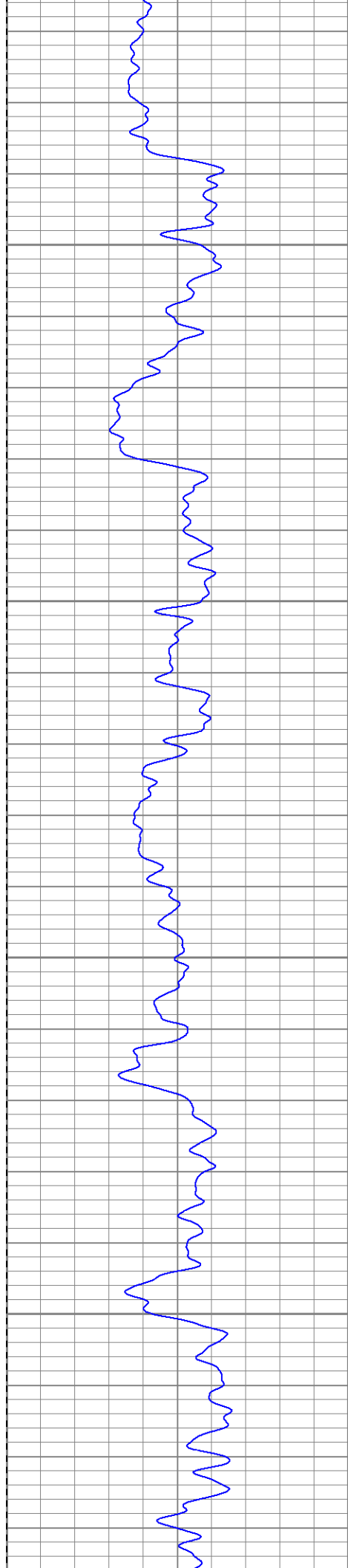
50

100

150

200



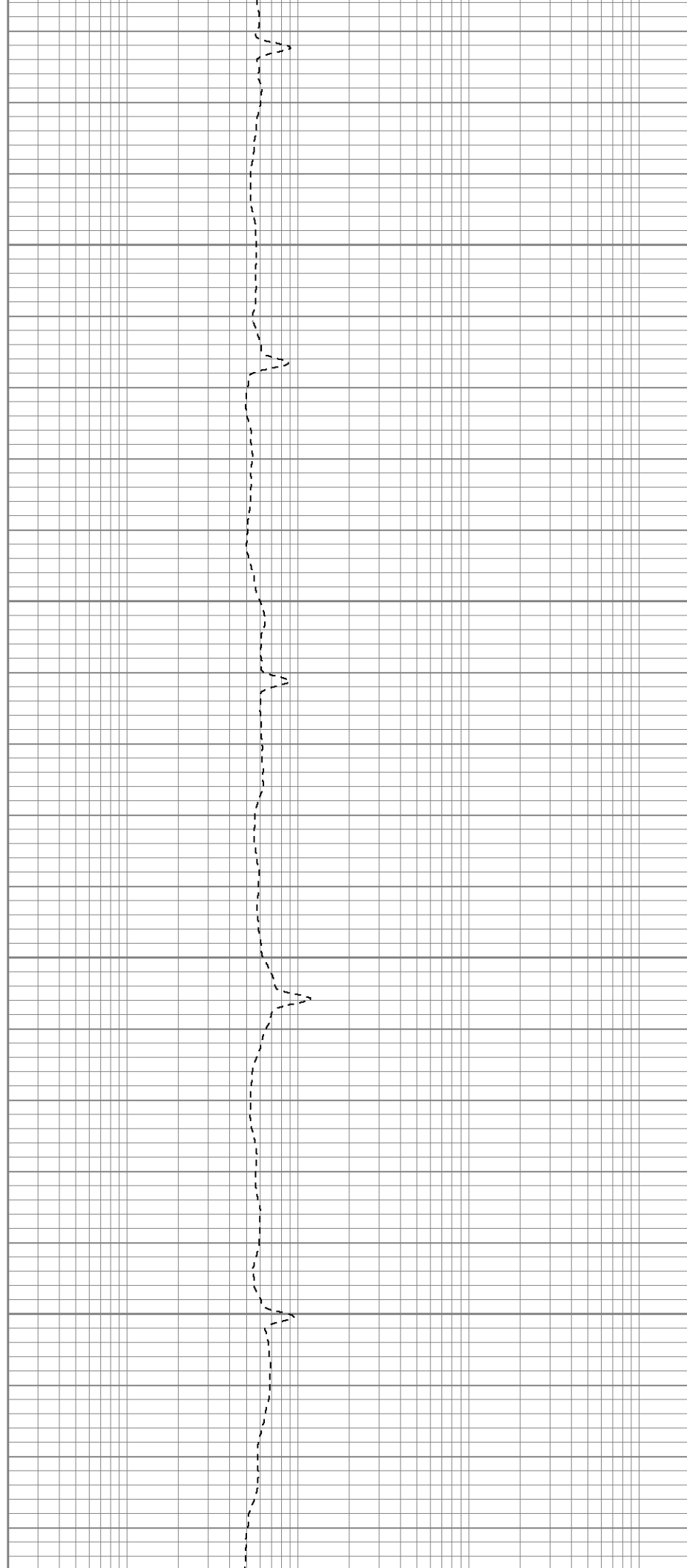


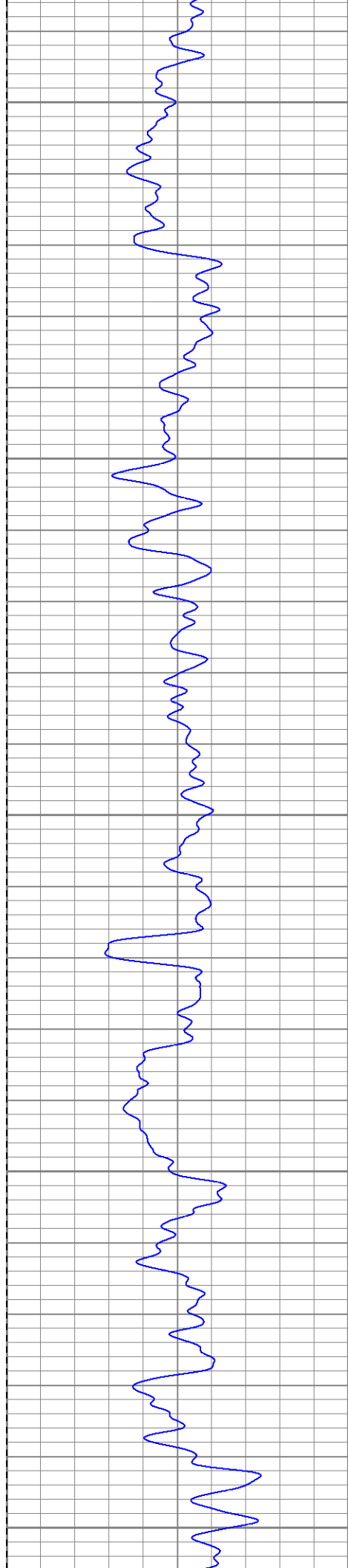
250

300

350

400





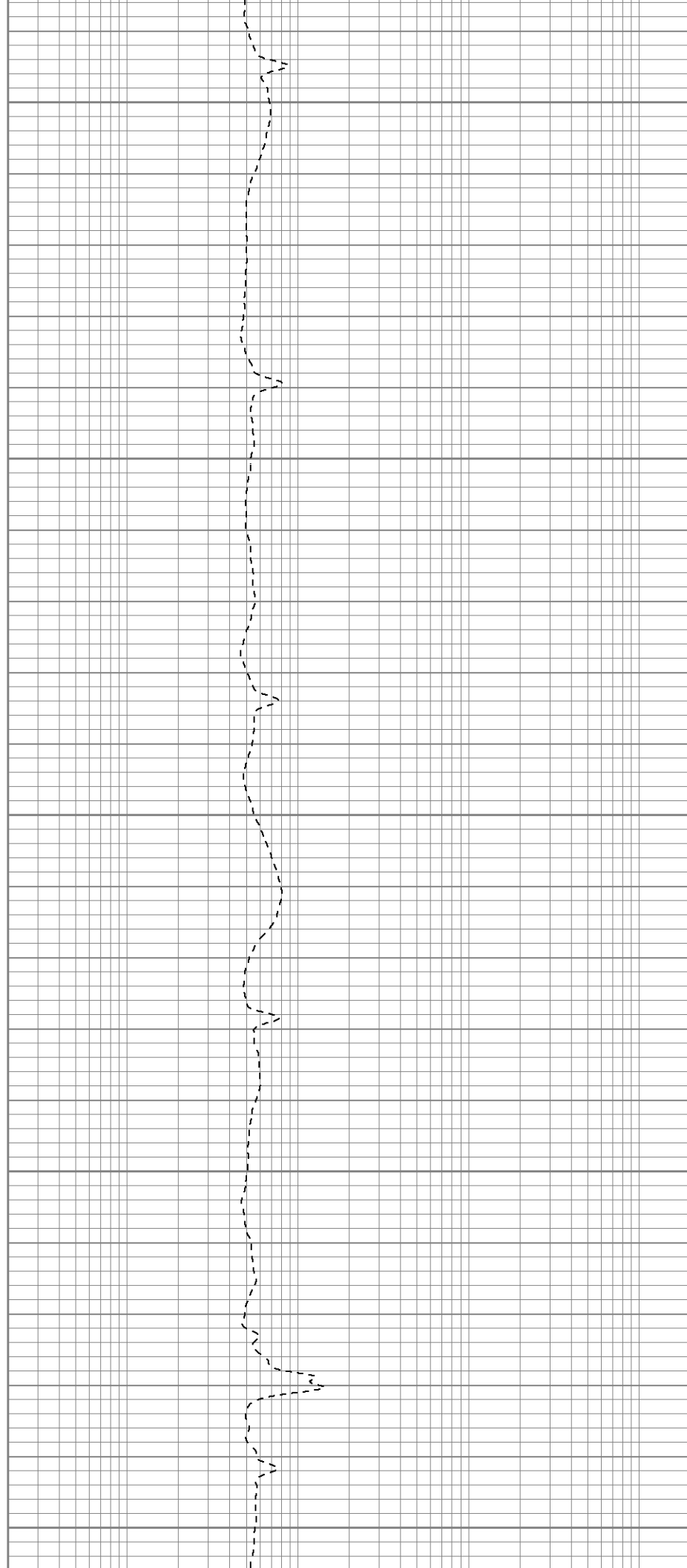
450

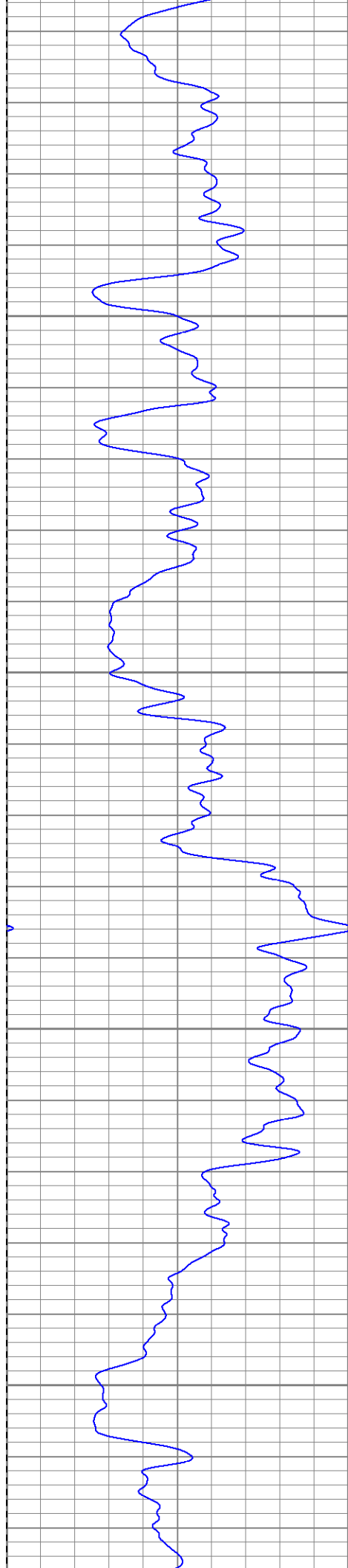
500

550

600

650



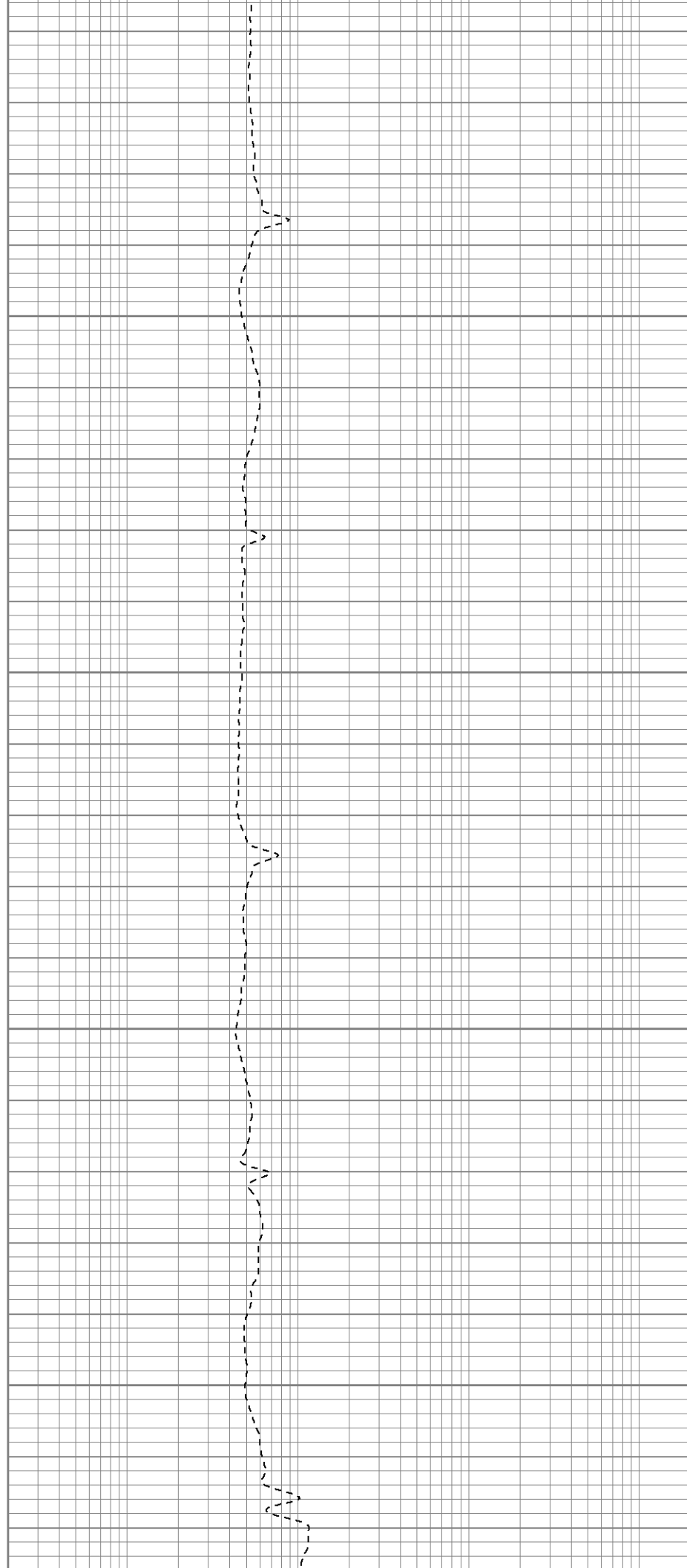


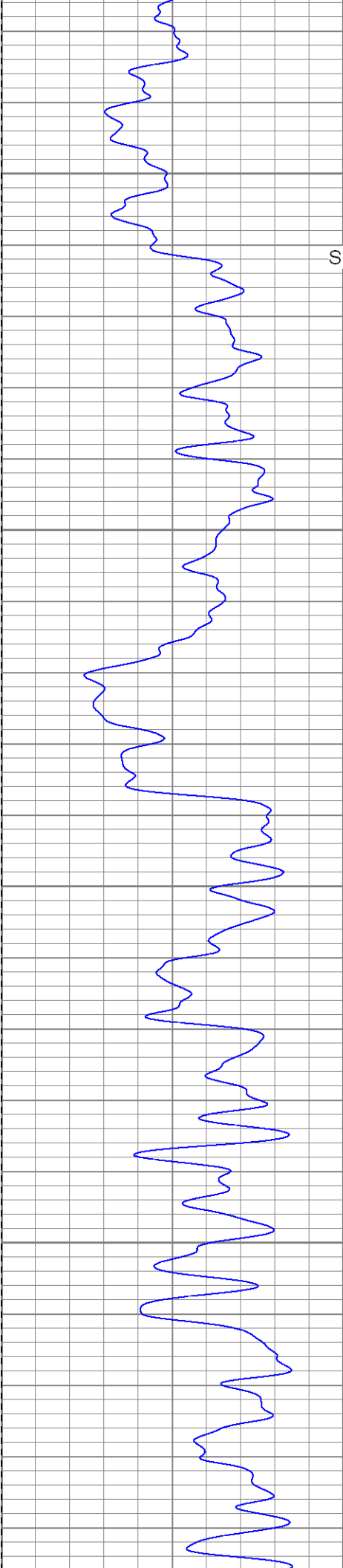
700

750

800

850





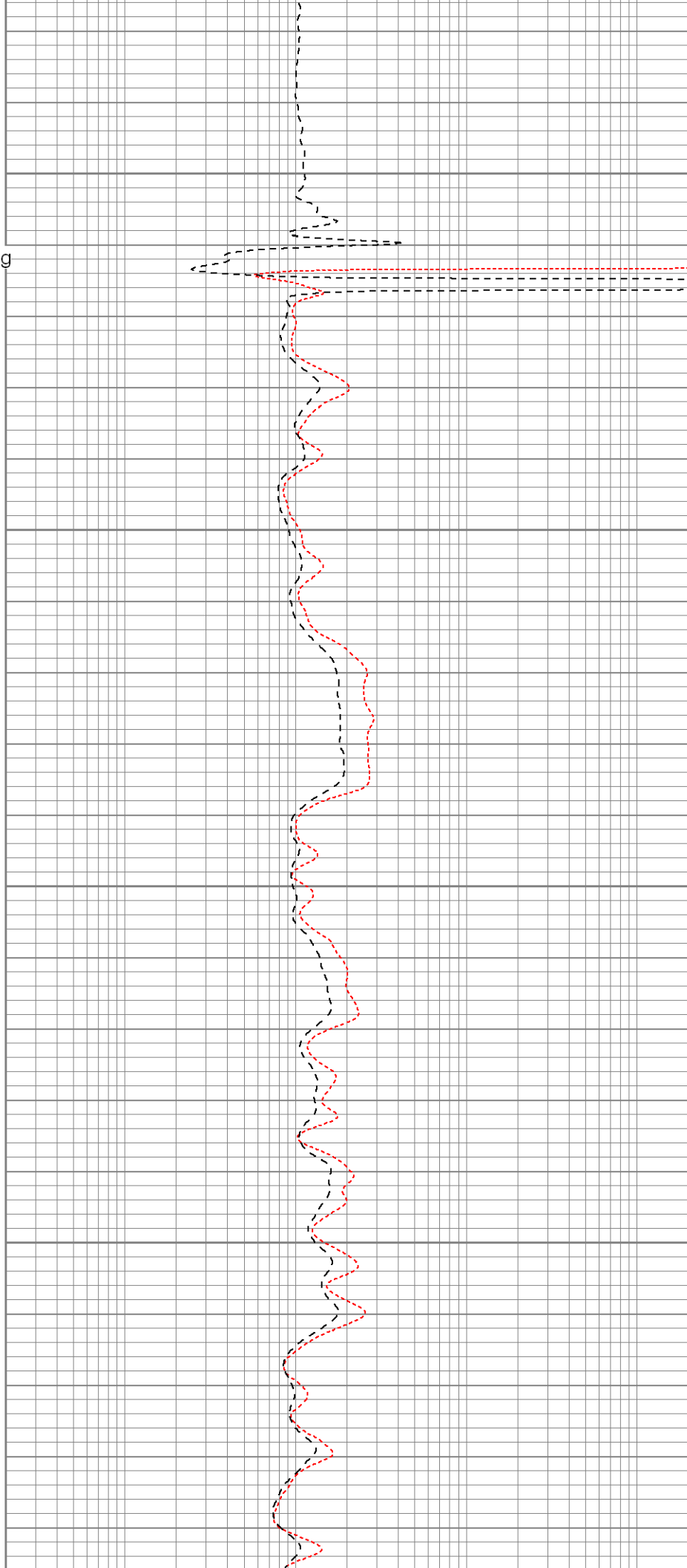
900

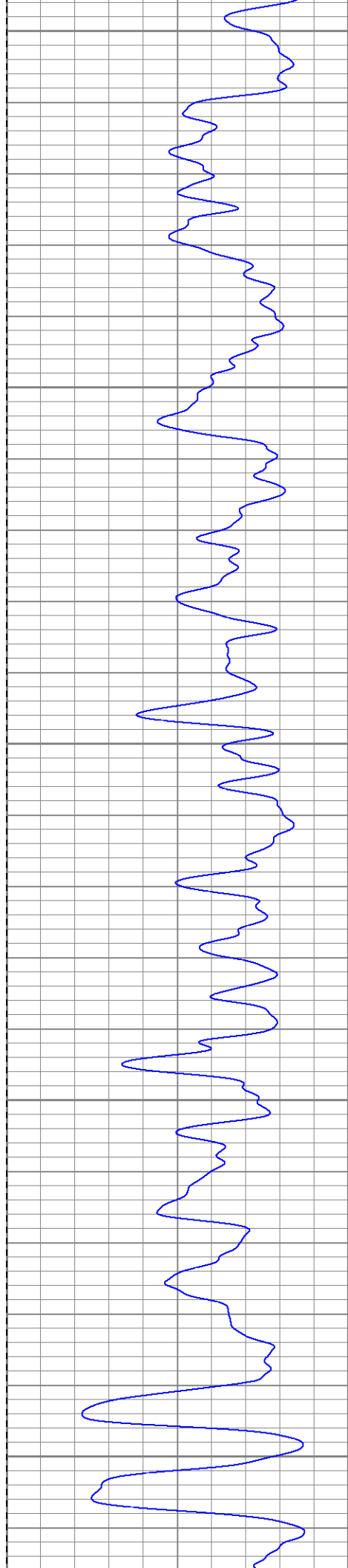
Surface Casing

950

1000

1050





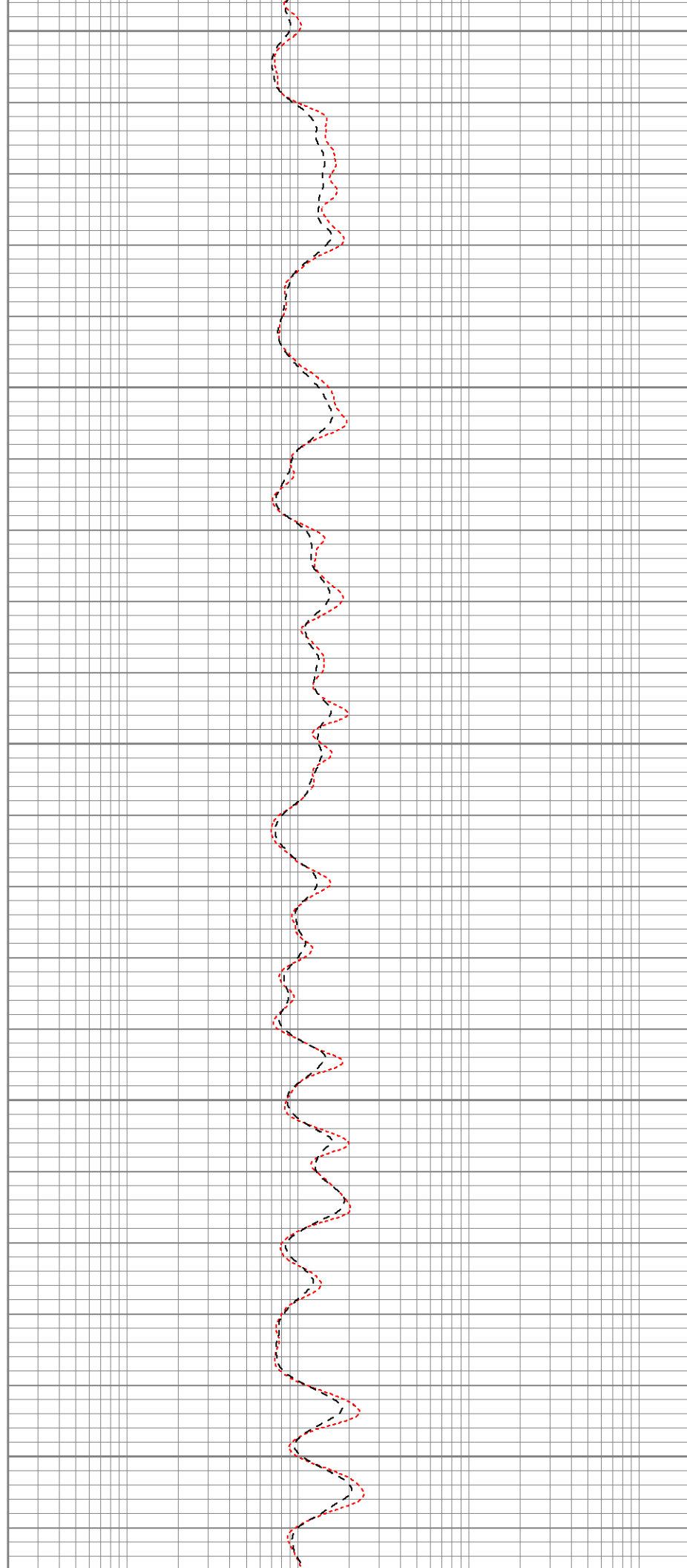
1100

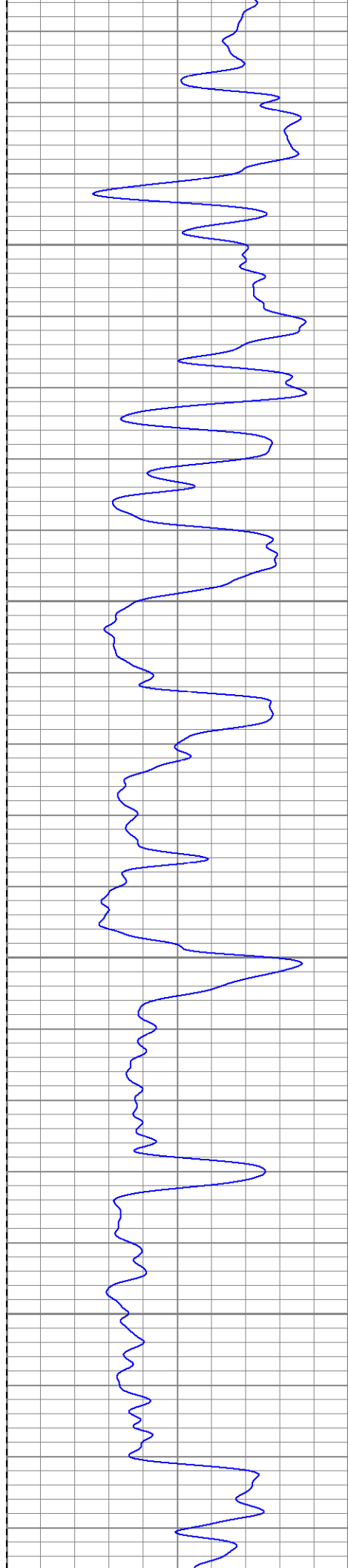
1150

1200

1250

1300



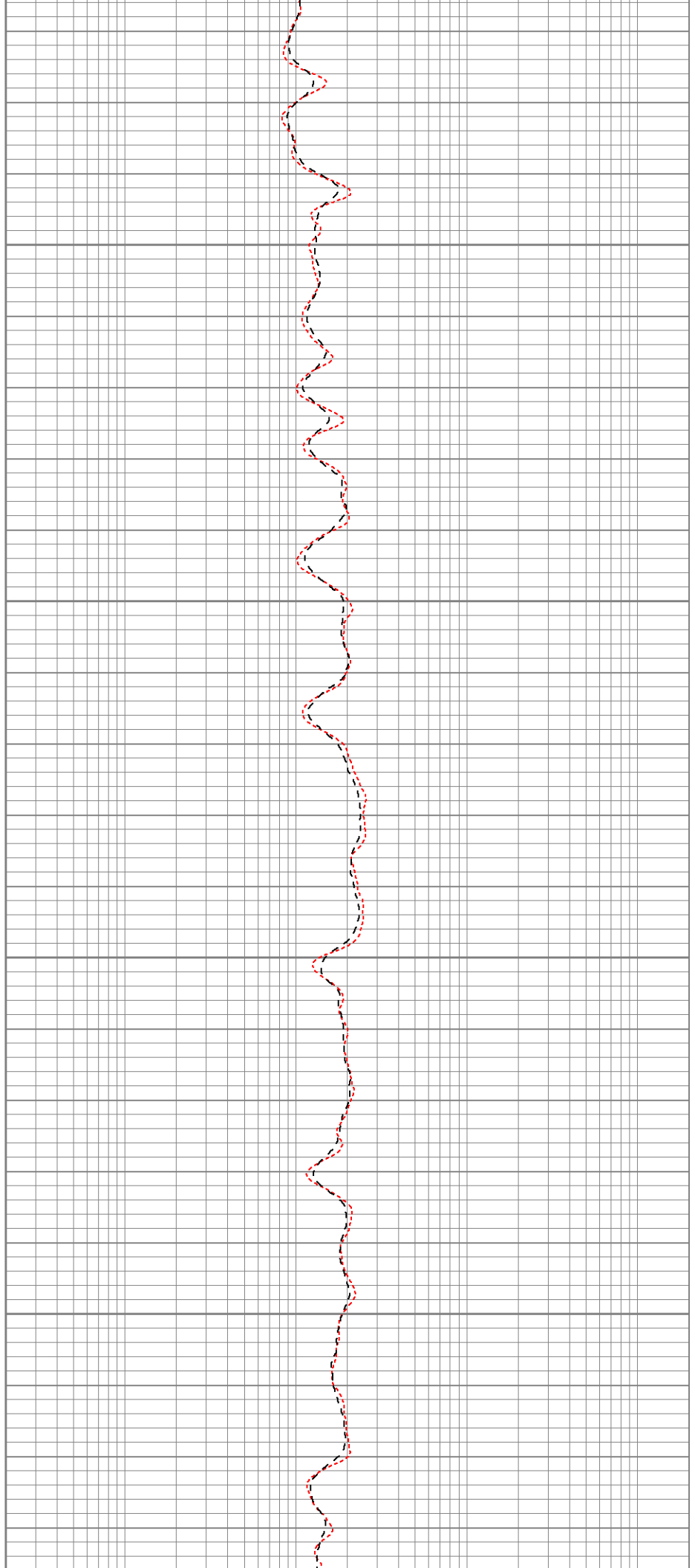


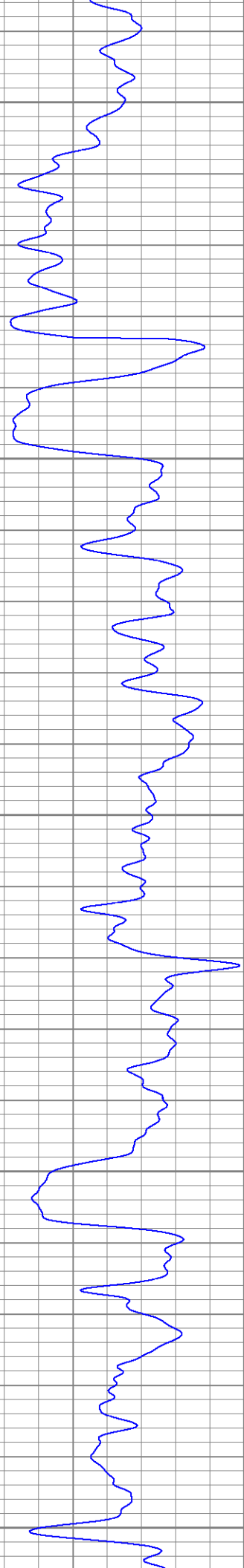
1350

1400

1450

1500





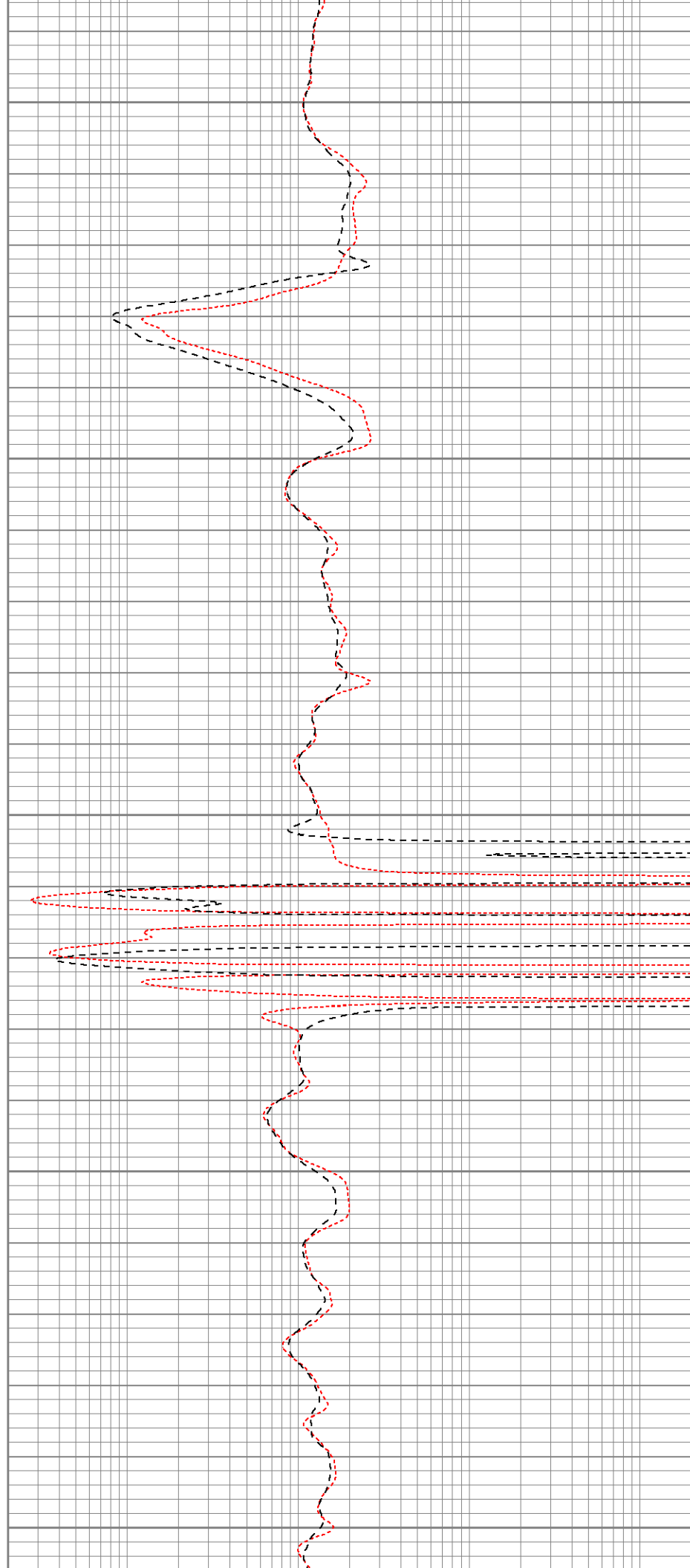
1550

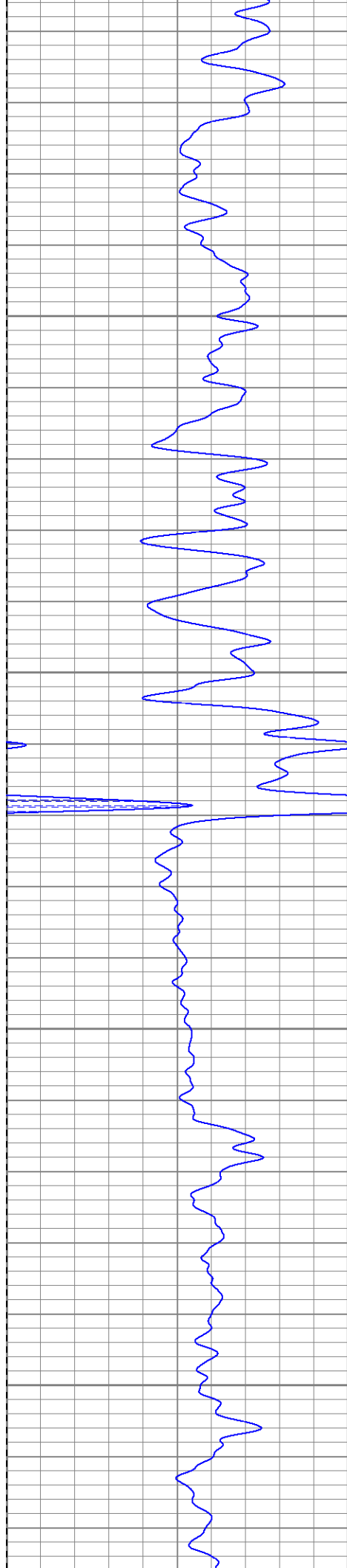
1600

1650

1700

1750



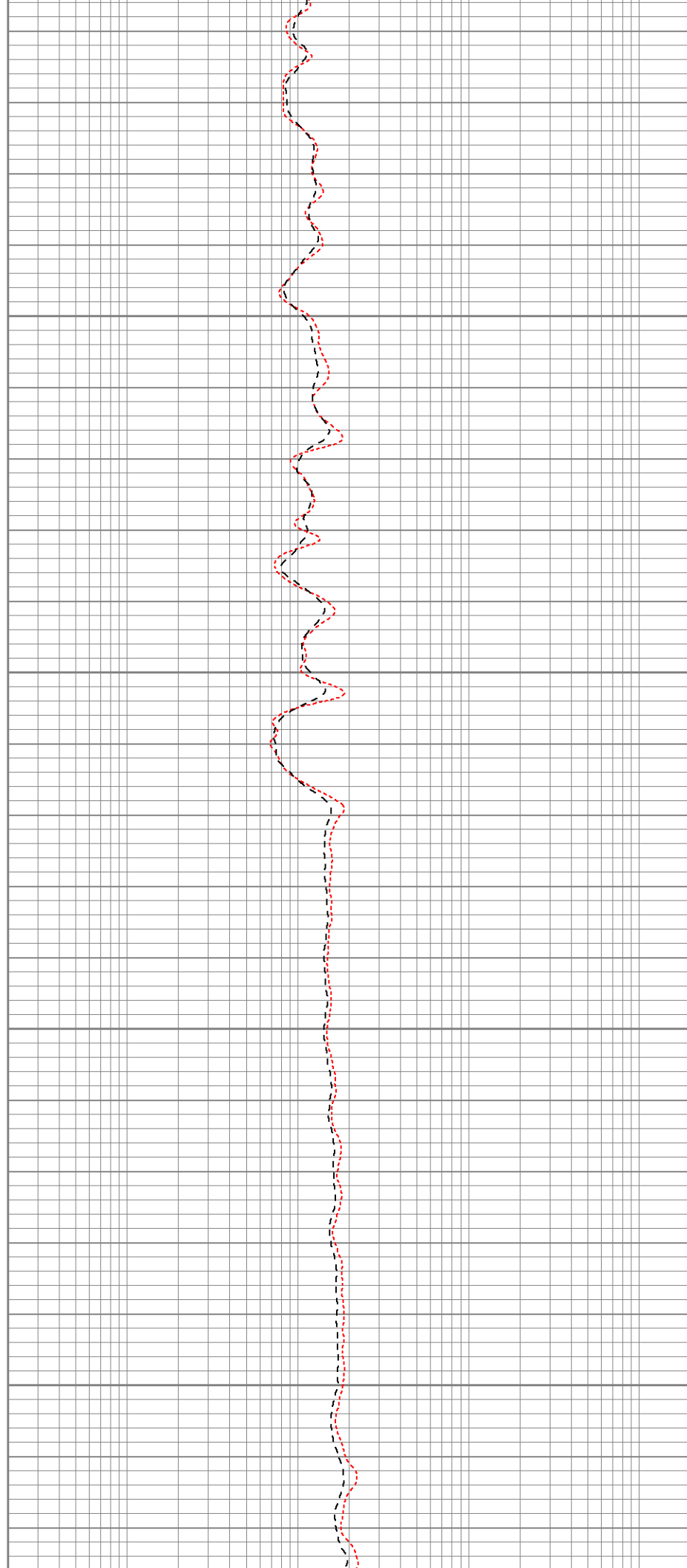


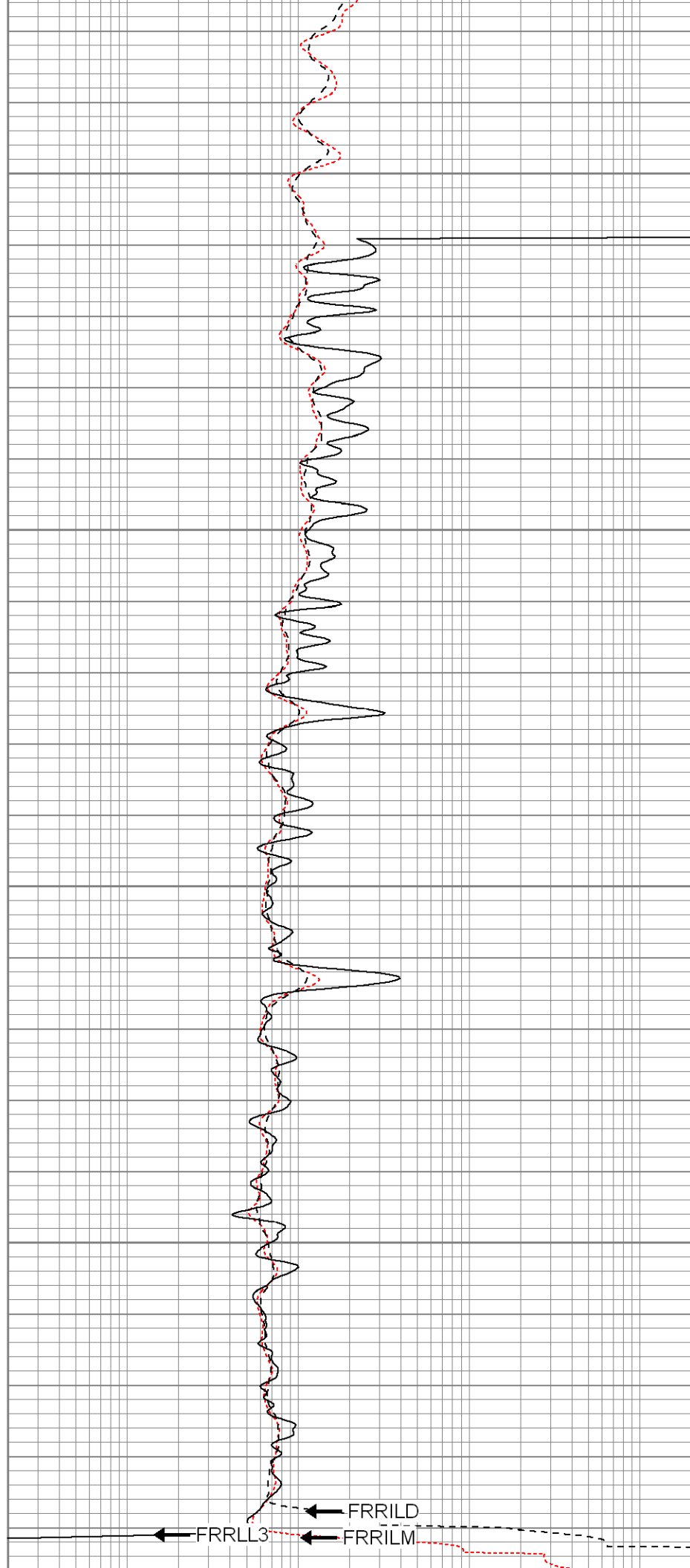
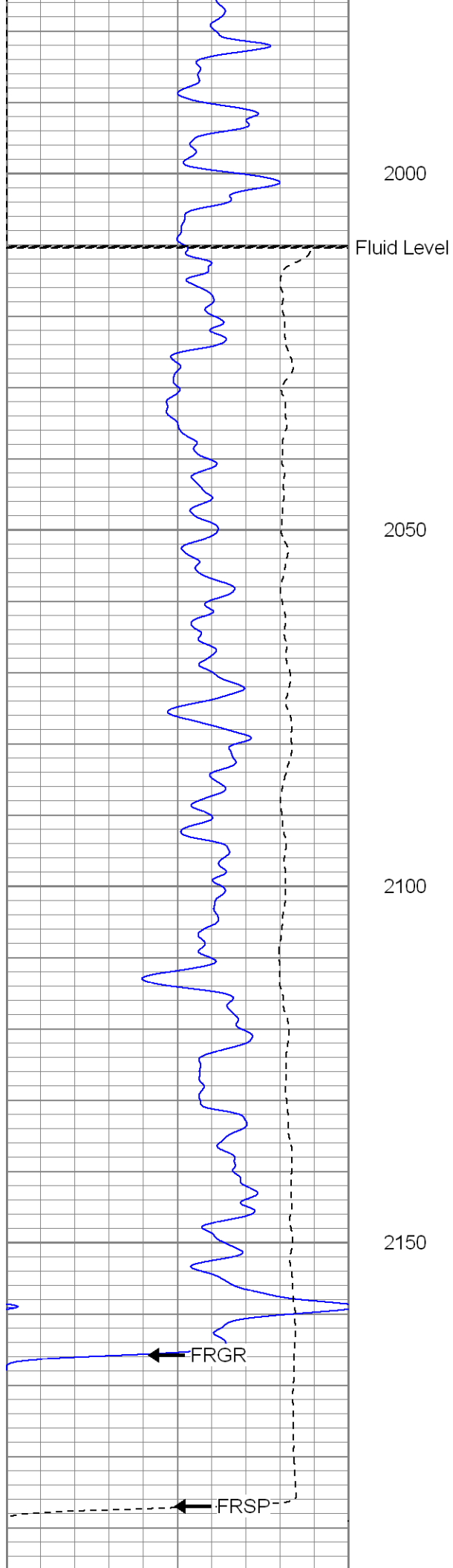
1800

1850

1900

1950





0	GR (GAPI)	200
-200	SP (mV)	0

0.2	RILM (Ohm-m)	2000
0.2	RILD (Ohm-m)	2000
0.2	RLL3 (Ohm-m)	2000



SUPERIOR

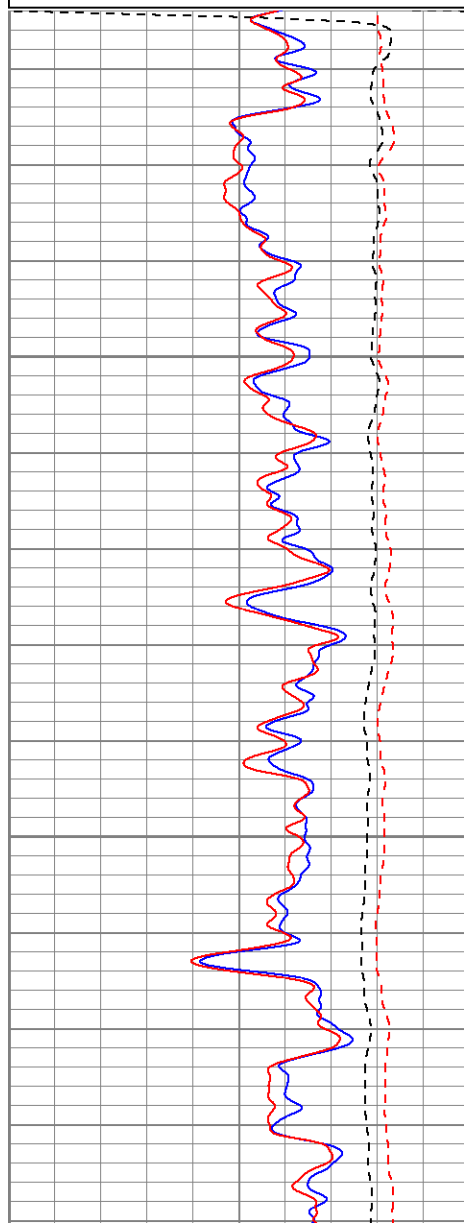
Black Lick, Pa.
Mercer, Pa.
Wooster, Oh.
Cleveland, Ok.
Trinidad, Co.

Repeat Pass

Database File: xtone2506.db
Dataset Pathname: pass1.1
Presentation Format: dil
Dataset Creation: Mon Jun 30 03:58:41 2008 by Calc Open-Cased 070814
Charted by: Depth in Feet scaled 1:240

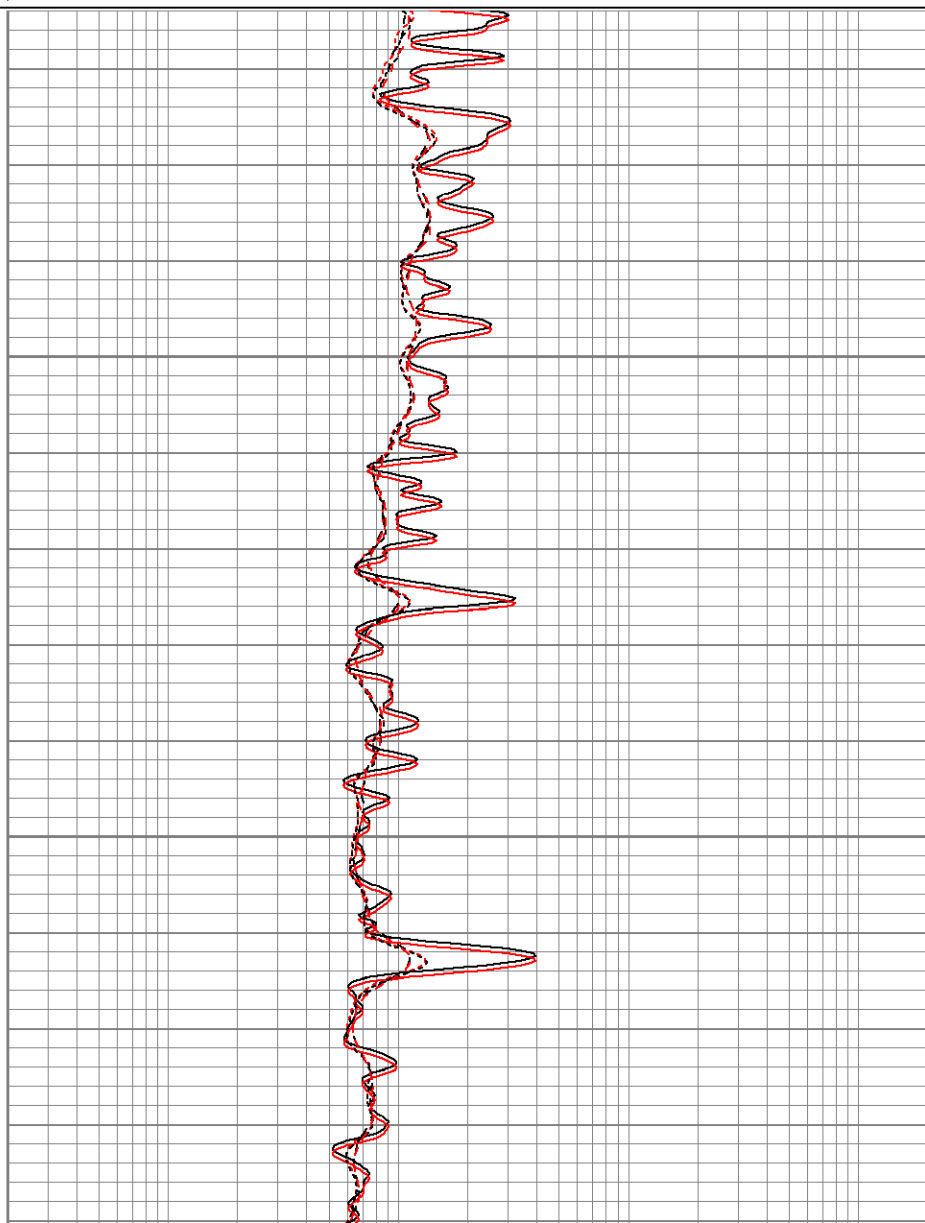
0	GR (GAPI)	200
-200	SP (mV)	0
0	GR-repeat (GAPI)	200
-200	SP-repeat (mV)	0

0.2	RILM (Ohm-m)	2000
0.2	RILD (Ohm-m)	2000
0.2	RLL3 (Ohm-m)	2000
0.2	RLL3-repeat (Ohm-m)	2000
0.2	RILM-repeat (Ohm-m)	2000
0.2	RILD-repeat (Ohm-m)	2000



2050

2100





0.2	RILM (Ohm-m)	2000
0.2	RILD (Ohm-m)	2000
0.2	RLL3 (Ohm-m)	2000
0.2	RLL3-repeat (Ohm-m)	2000
0.2	RILM-repeat (Ohm-m)	2000
0.2	RILD-repeat (Ohm-m)	2000

Database File: xtone2506.db
Dataset Pathname: pass1
Dataset Creation: Mon Jun 30 03:28:48 2008 by Log Open-Cased 070814

Serial-Model: 080522-Probe
Surface Cal Performed: Wed Jun 04 14:22:17 2008
Downhole Cal Performed: Thu Jun 12 12:12:50 2008
After Survey Verification Performed: Thu Jun 12 12:12:50 2008

Readings			References			Results		
Loop:	Air	Loop		Air	Loop		m	b
Deep	0.006	0.647	V	0.000	400.000	mmho-m	623.790	-3.739
Medium	0.014	0.754	V	0.000	464.000	mmho-m	627.128	-8.884
Internal:	Zero	Cal		Zero	Cal		m	b
Deep	0.007	0.648	V	0.000	400.000	mmho-m	624.783	-4.587
Medium	0.013	0.754	V	0.000	464.000	mmho-m	626.379	-8.017

	Readings			References			Results	
	Zero	Cal		Zero	Cal		m'	b'
Deep	2.604	402.452	mmho-m	0.841	400.206	mmho-m	0.999	-1.760
Medium	1.030	462.308	mmho-m	-0.857	463.698	mmho-m	1.007	-1.894
LL3		7.405	V		750.000	Ohm-m		
		-0.005	V		12.000	Ohm-m		
		-7.230	V		3745.000	mmho-m		

Serial Number: 2542T

Tool Model: CDLP
Performed: Fri Jun 27 10:52:07 2008

	Reference	Reading
Low Reference:	55.00 degF	3.11 V
High Reference:	160.00 degF	5.35 V
Gain:	46.88	
Offset:	-90.78	
Delta Spacing	1	

Compensated Density Calibration Report

Serial-Model:	2542-T2
Source / Verifier:	/
Master Calibration Performed:	Thu Jun 26 08:09:20 2008

Master Calibration


	Density		Far Detector	Near Detector	
Magnesium	1.710	g/cc	725.64	339.44	cps
Aluminum	2.590	g/cc	162.65	232.88	cps
Spine Angle = 75.86			Density/Spine Ratio = 0.571		
	Size		Reading		
Small Ring	8.00	in	1.33	V	
Large Ring	14.00	in	2.67	V	

Gamma Ray Calibration Report

Serial Number:	2001	
Tool Model:	OH	
Performed:	Wed Jun 04 09:52:45 2008	
Calibrator Value:	1.0	GAPI
Background Reading:	0.0	cps
Calibrator Reading:	1.0	cps
Sensitivity:	0.2500	GAPI/cps

Neutron Calibration Report

Serial Number:	5108	
Tool Model:	PROBE	
Performed:	Thu Jun 26 12:08:49 2008	
Calibrator Value:	1	NAPI
Calibrator Reading:	1	cps
Sensitivity:	1	NAPI/cps

Sensor	Offset (ft)	Schematic	Description	Len (ft)	OD (in)	Wt (lb)
NEU	37.47		None	0.75	1.50	5.00
			NEU-PROBE (5108) Probe Epithermal	4.92	3.63	85.00
			GR-OH (2001)	3.56	3.25	40.00

