



SUPERIOR
Black Lick, Pa.
Mercer, Pa.
Wooster, Oh.
Cleveland, Ok.
Trinidad, Co.

DUAL INDUCTION LOG

Company XTO Energy Inc.
Well New Elk 25-04
Field Purgatoire River
County Las Animas State Colorado

Location: API # : 05 071 09535 00

829' FNL & 1200' FWL

SEC 25 TWP 33S RGE 68W

Other Services
CDL
NEUTRON

Elevation

Permanent Datum Ground Level Elevation 7765'
Log Measured From Ground Level
Drilling Measured From Ground Level

K.B. -----
D.F. -----
G.L. 7765'

Date 6-26-08

Run Number One

Depth Driller 2200'

Depth Logger 2202'

Bottom Logged Interval 2200'

Top Log Interval Surface Casing

Casing Driller 8 5/8" @ 903'

Casing Logger 901'

Bit Size 7 7/8"

Type Fluid in Hole Water

Density / Viscosity ///

pH / Fluid Loss ///

Source of Sample ///

Rm @ Meas. Temp ///

Rmf @ Meas. Temp ///

Rmc @ Meas. Temp ///

Source of Rmf / Rmc ///

Rm @ BHT ///

Time Circulation Stopped 11:00 A.M.

Time Logger on Bottom 1:40 P.M.

Maximum Recorded Temperature 117 DEG F

Equipment Number T697

Location Trinidad

Recorded By J. Cappellucci

Witnessed By Mr. Don Johnson

<<< Fold Here >>>

All interpretations are opinions based on inferences from electrical or other measurements and we cannot and do not guarantee the accuracy or correctness of any interpretation, and we shall not, except in the case of gross or willful negligence on our part, be liable or responsible for any loss, costs, damages, or expenses incurred or sustained by anyone resulting from any interpretation made by any of our officers, agents or employees. These interpretations are also subject to our general terms and conditions set out in our current Price Schedule.

Comments

Well Directions:
Second Bosque Entrance, straight across railroad tracks, at Y stay right to
Apache canyon, drive through 4 drive thru locations take next right,
dead end on location.



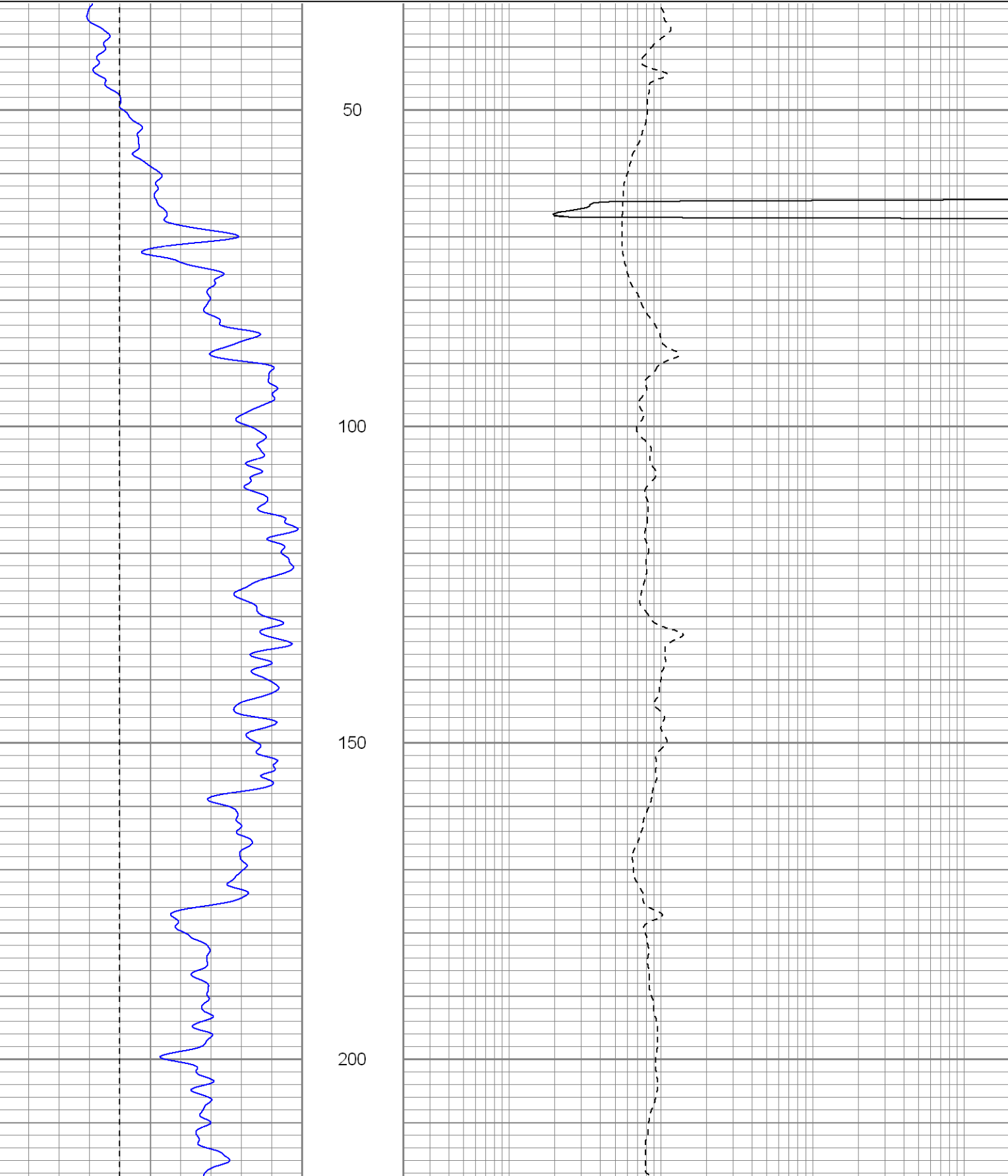
SUPERIOR
Black Lick, Pa.
Mercer, Pa.
Wooster, Oh.
Cleveland, Ok.
Trinidad, Co.

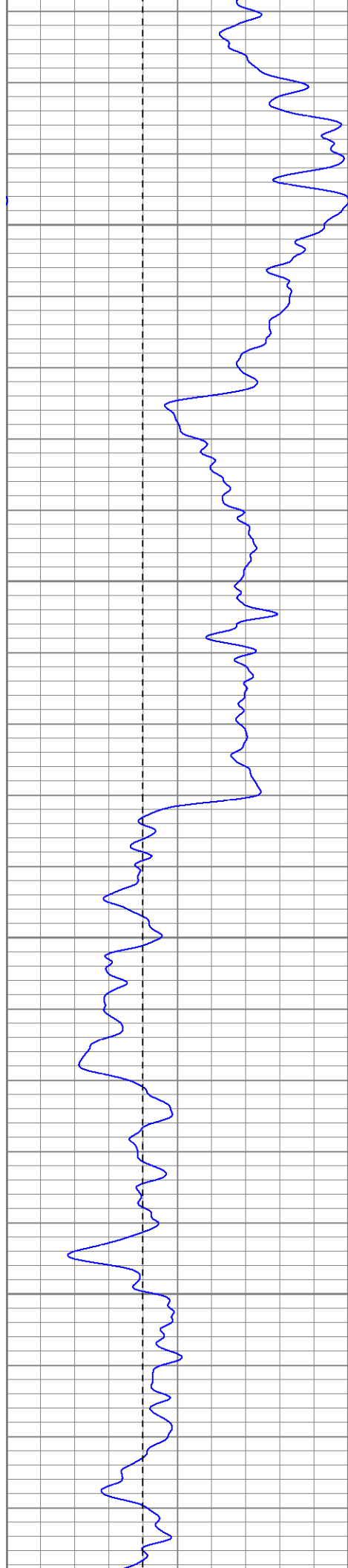
Main Pass

Database File: xtone2504.db
Dataset Pathname: pass2.1
Presentation Format: dil
Dataset Creation: Thu Jun 26 15:16:17 2008 by Calc Open-Cased 070814
Charted by: Depth in Feet scaled 1:240

0	GR (GAPI)	200
-200	SP (mV)	0

0.2	RILM (Ohm-m)	2000
0.2	RILD (Ohm-m)	2000
0.2	RLL3 (Ohm-m)	2000



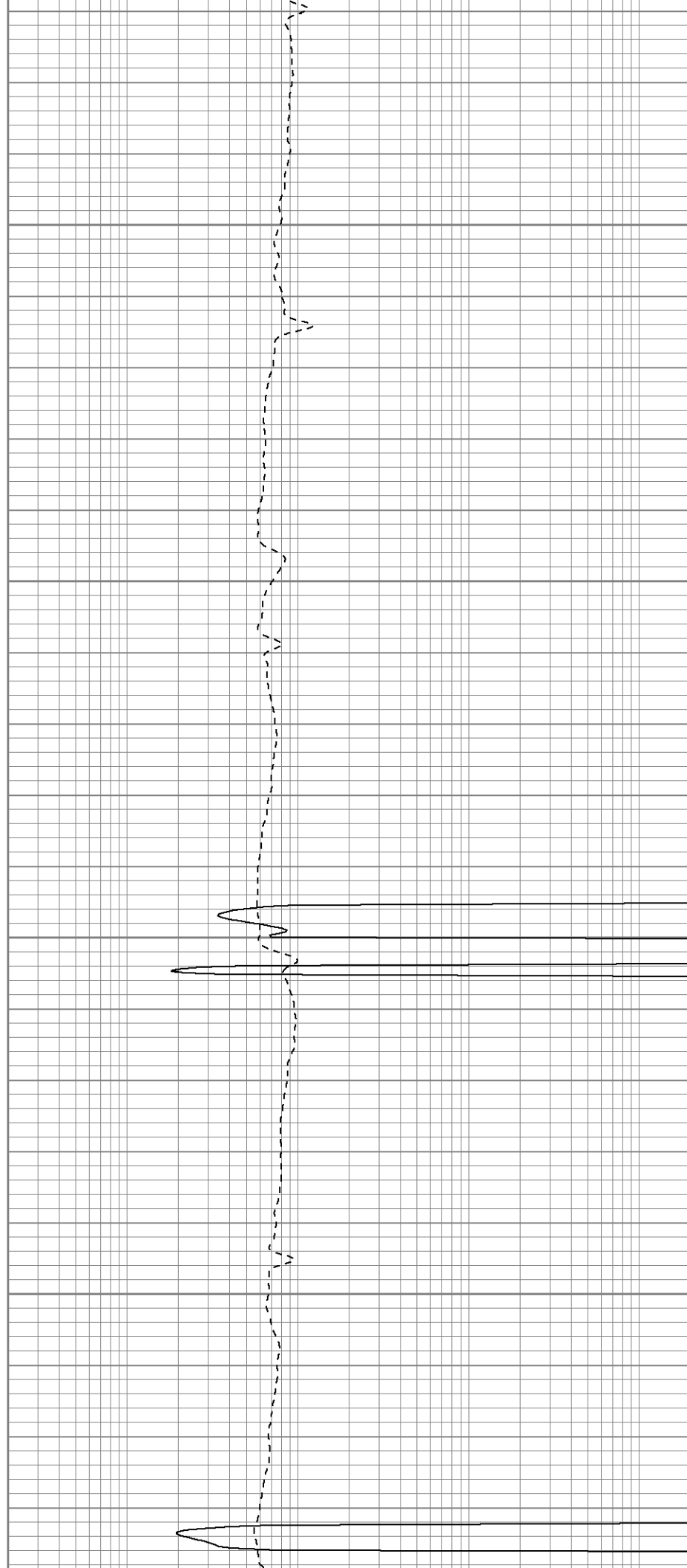


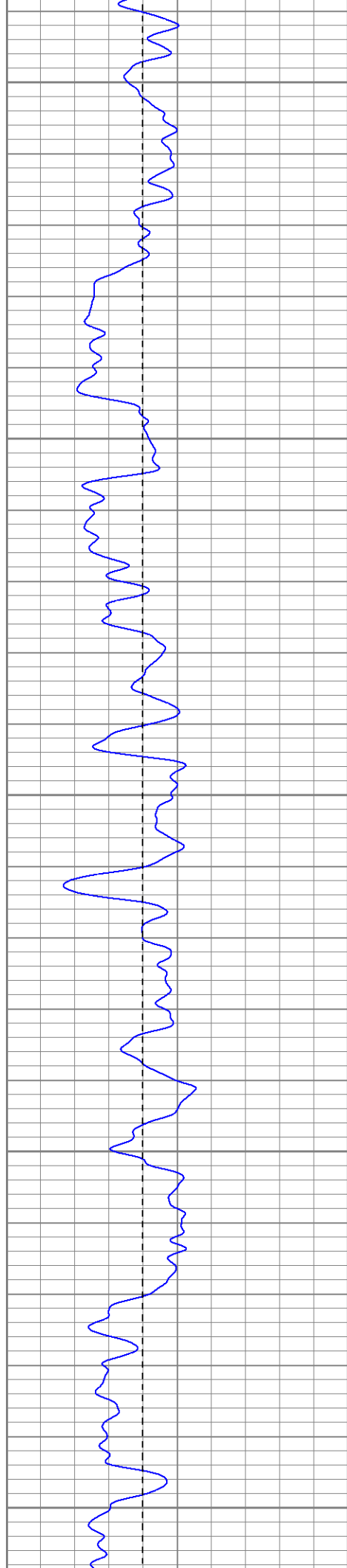
250

300

350

400





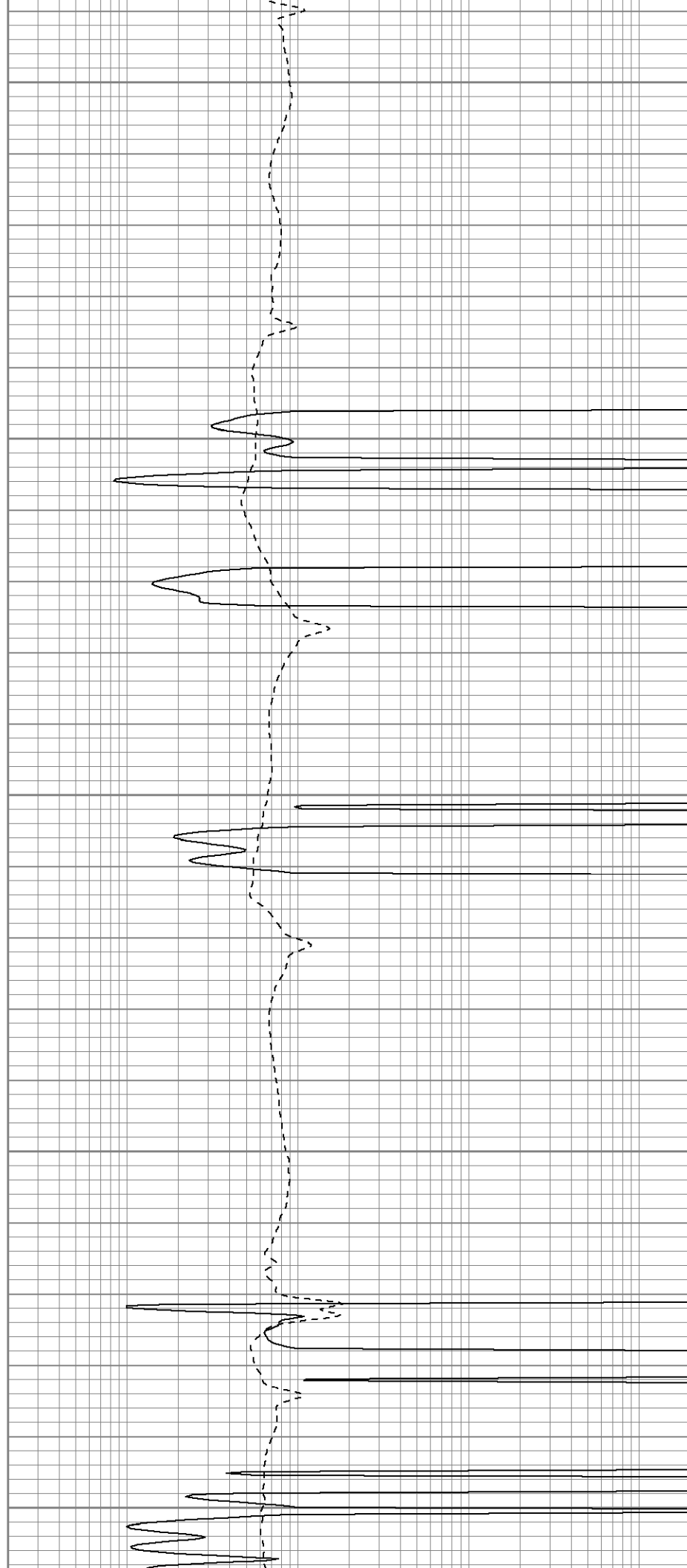
450

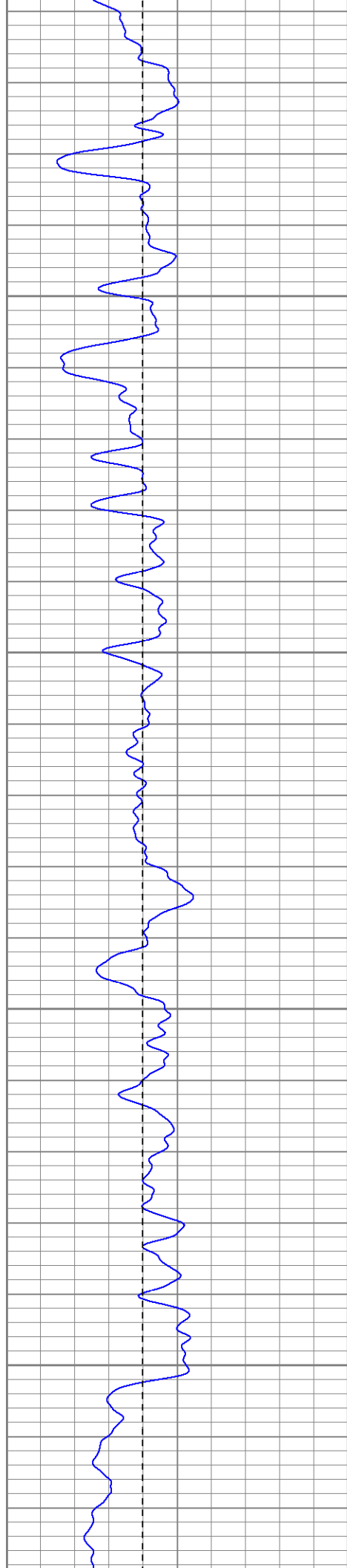
500

550

600

650



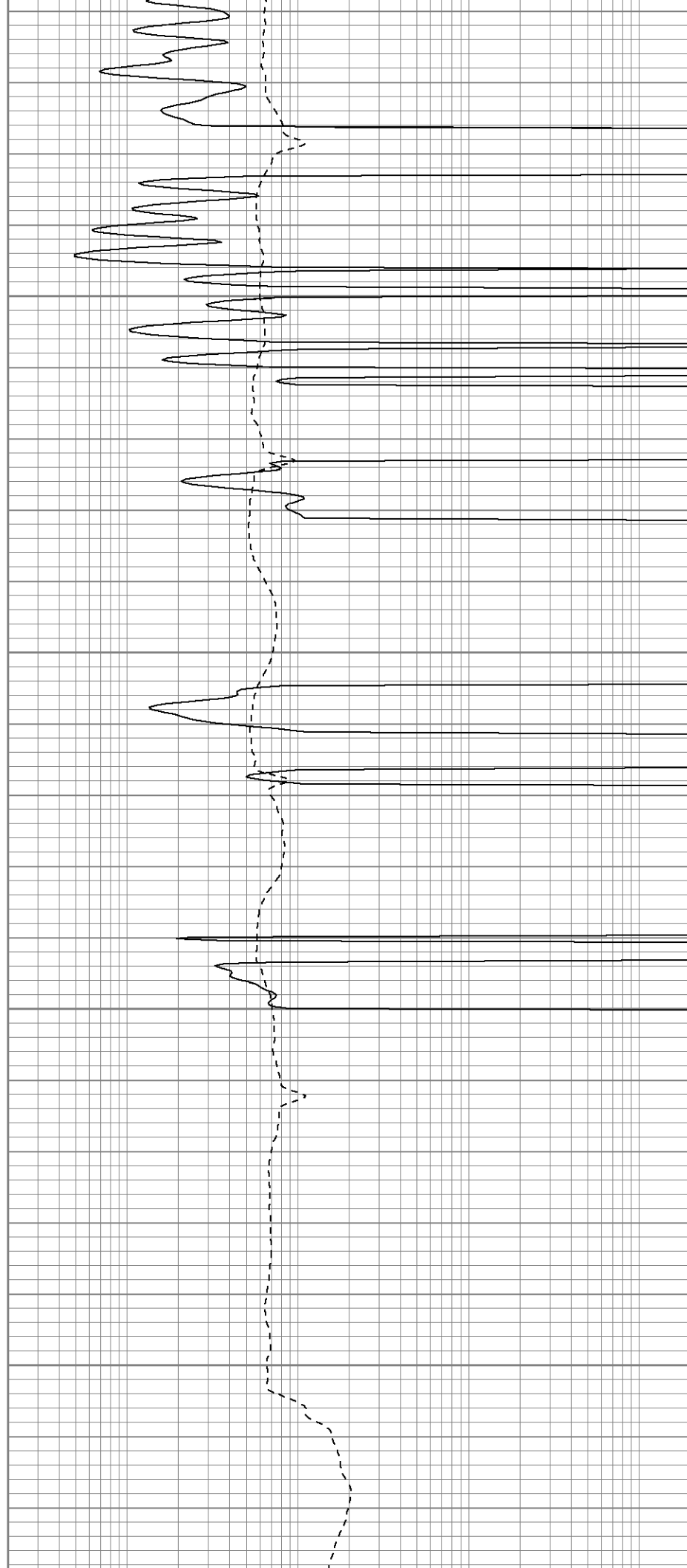


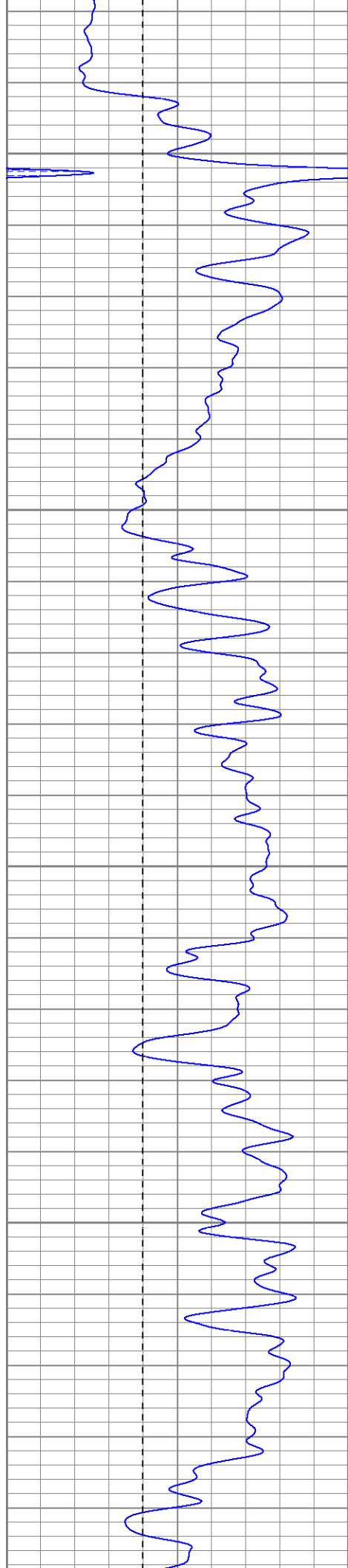
700

750

800

850



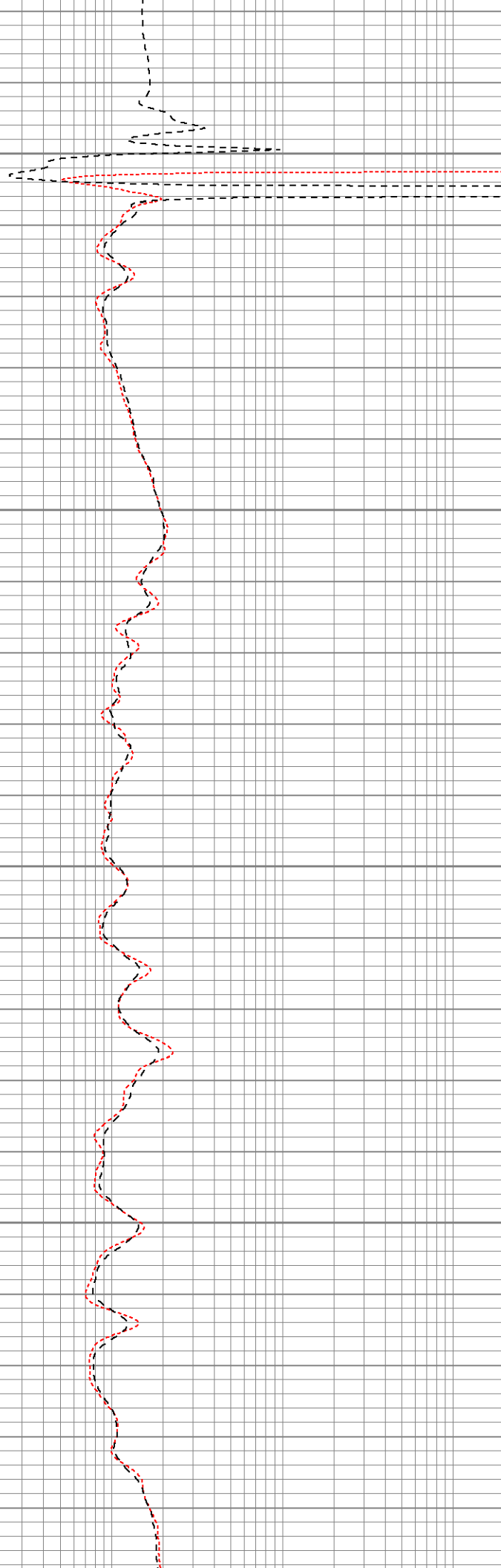


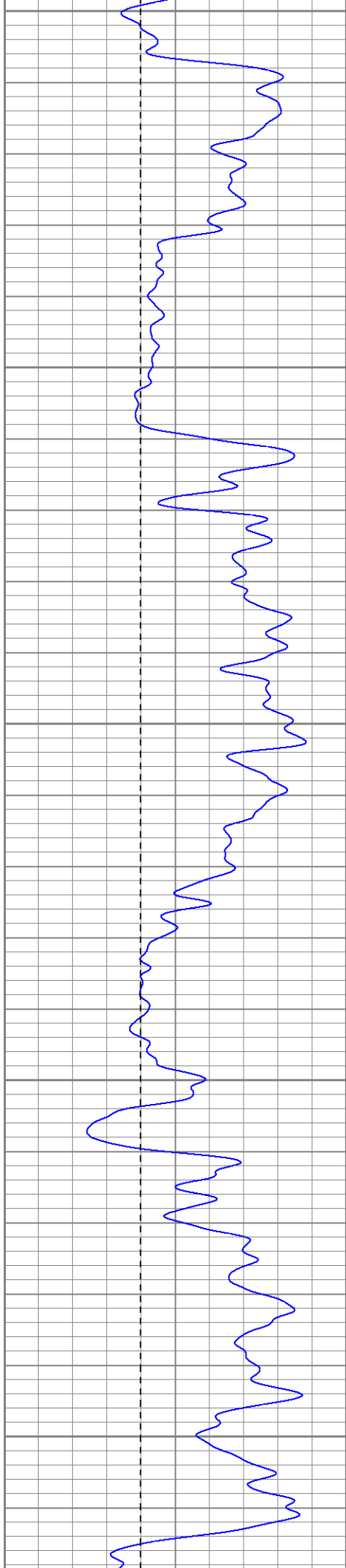
Surface Casing
900

950

1000

1050





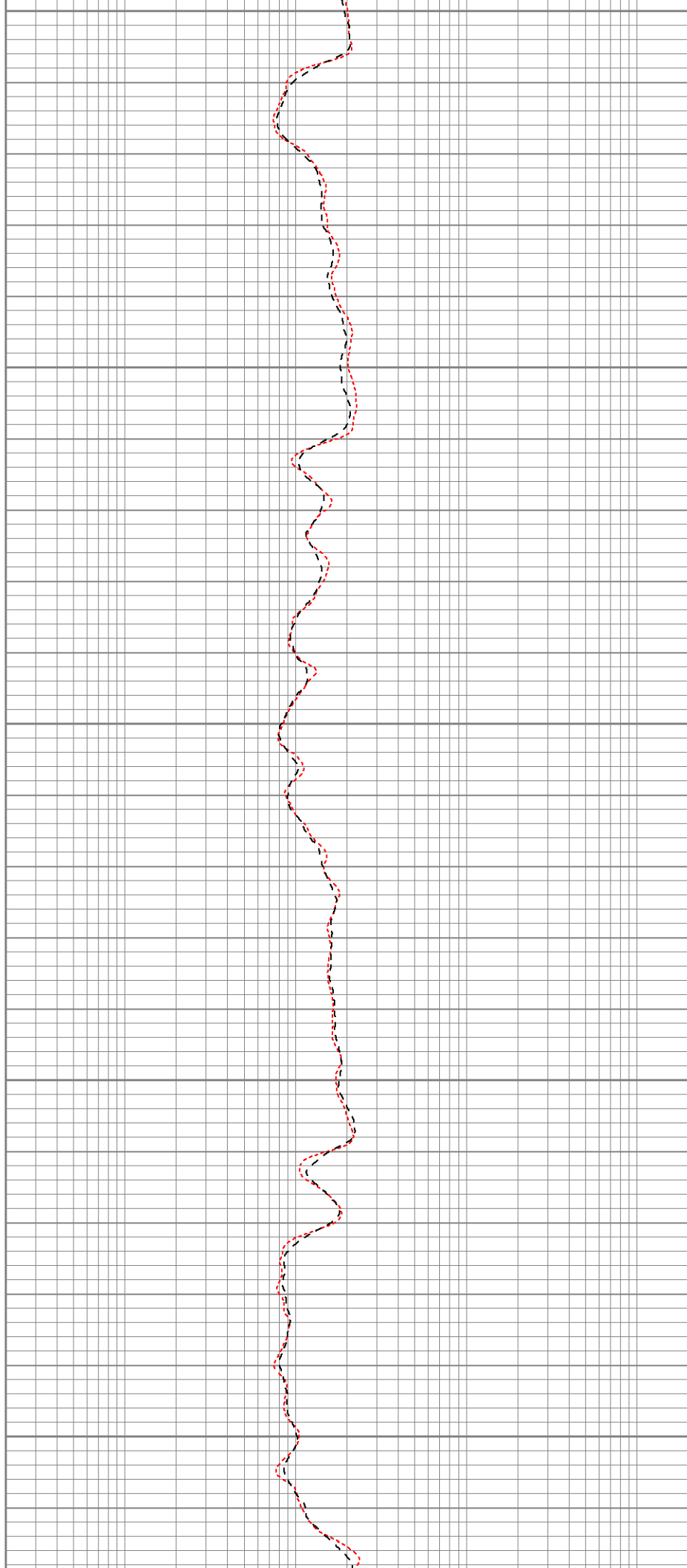
1100

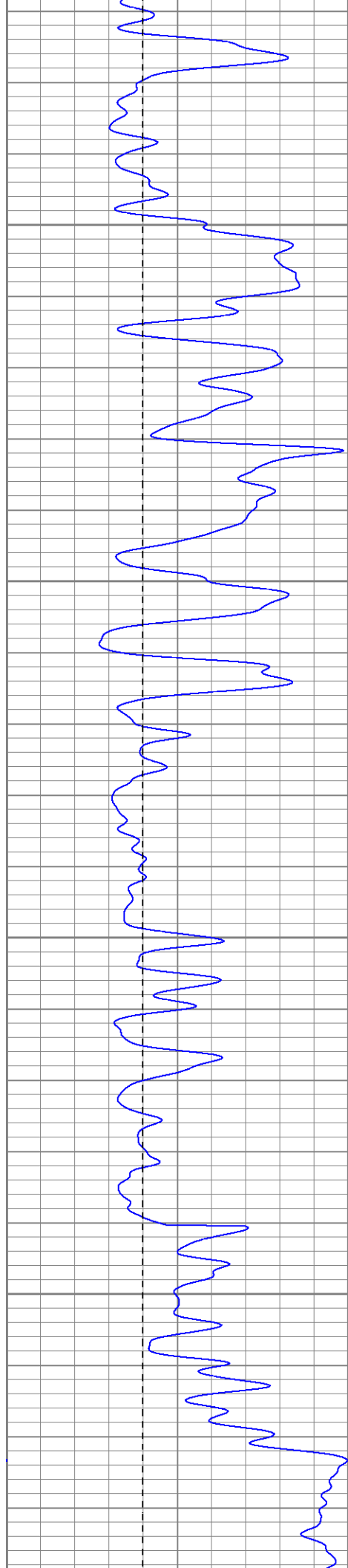
1150

1200

1250

1300



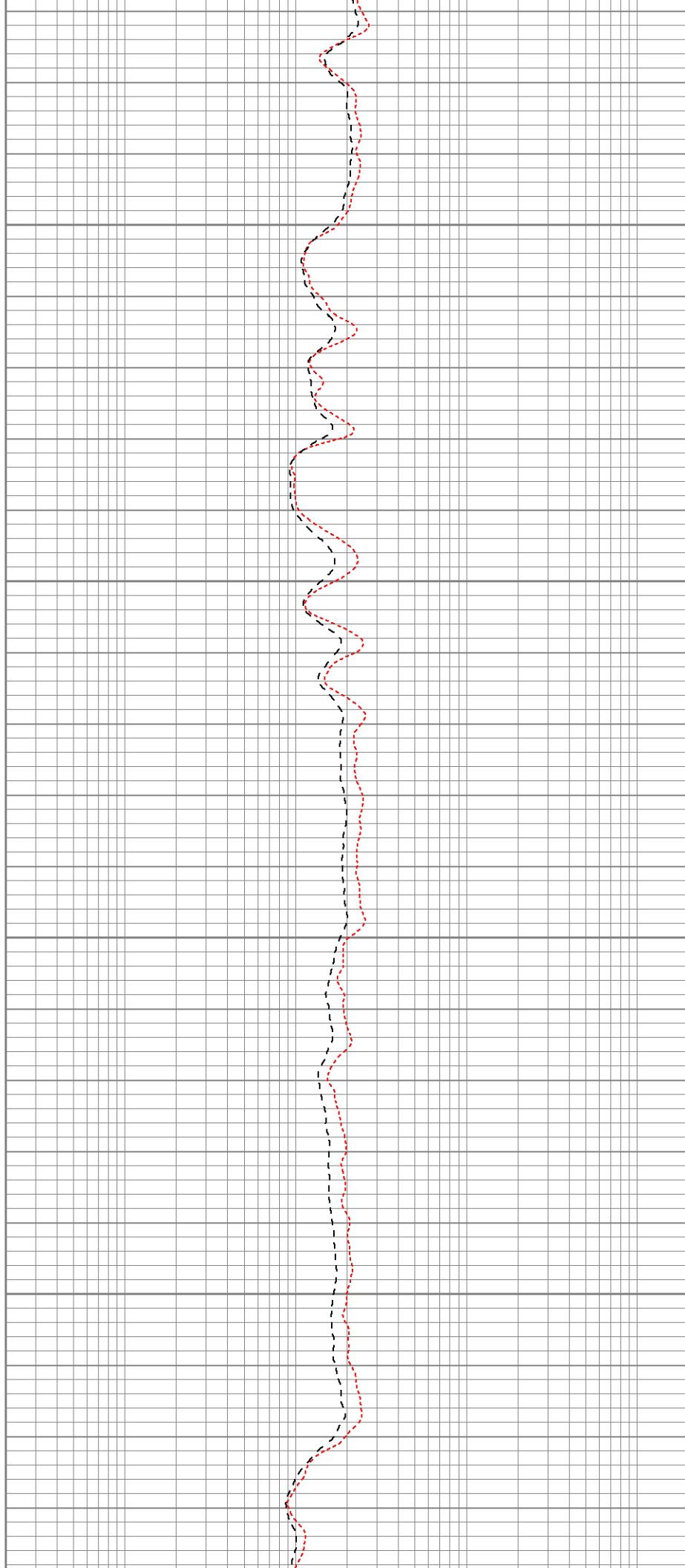


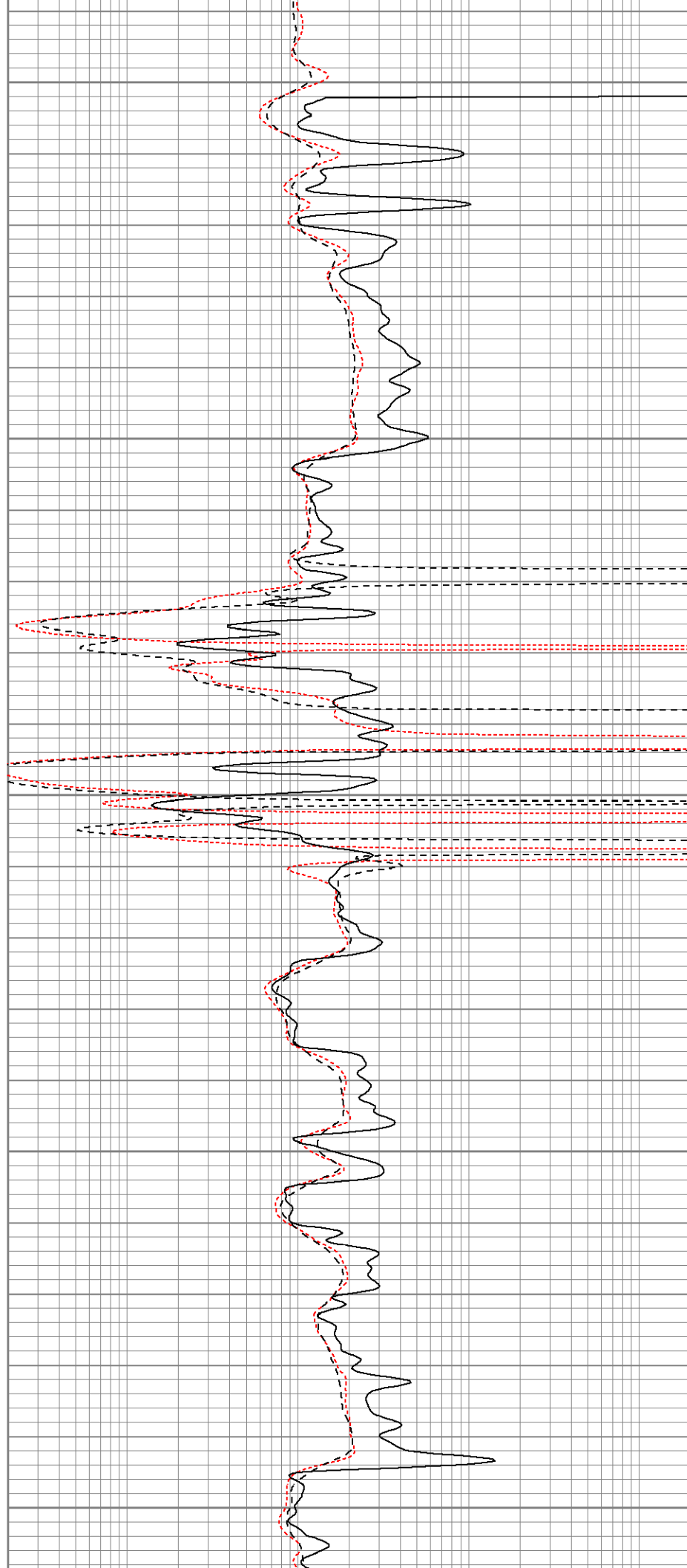
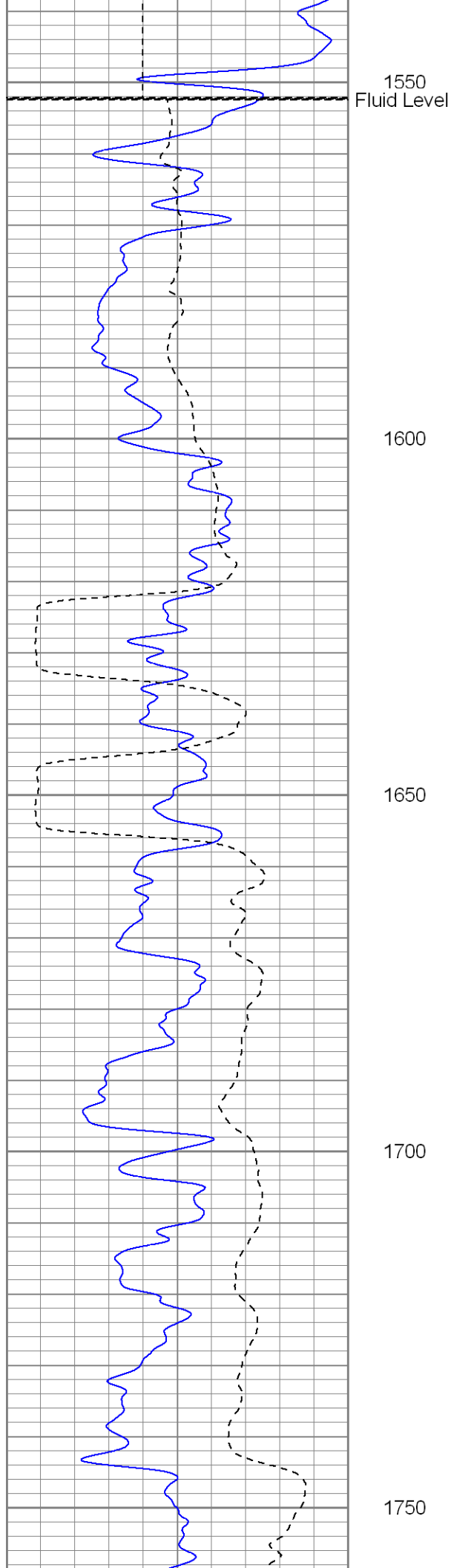
1350

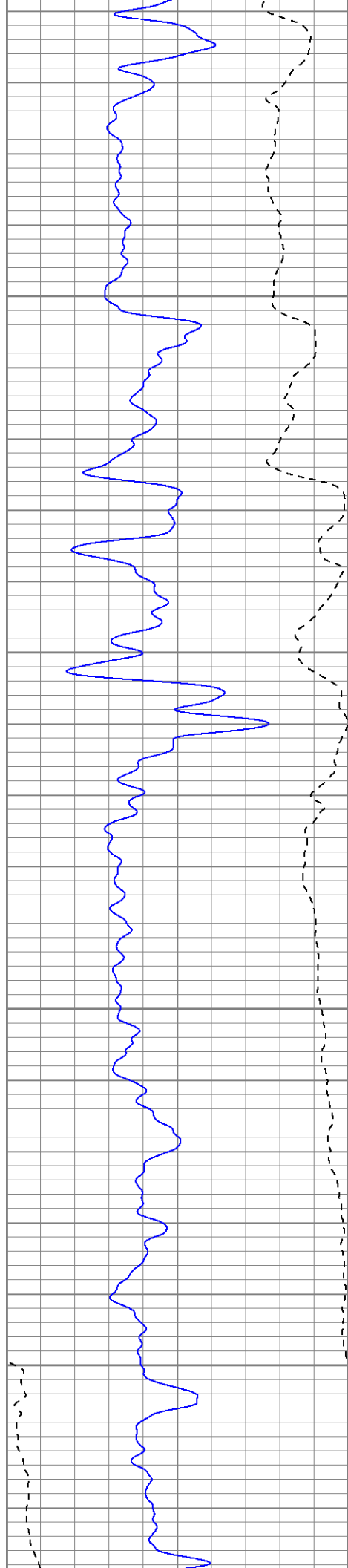
1400

1450

1500





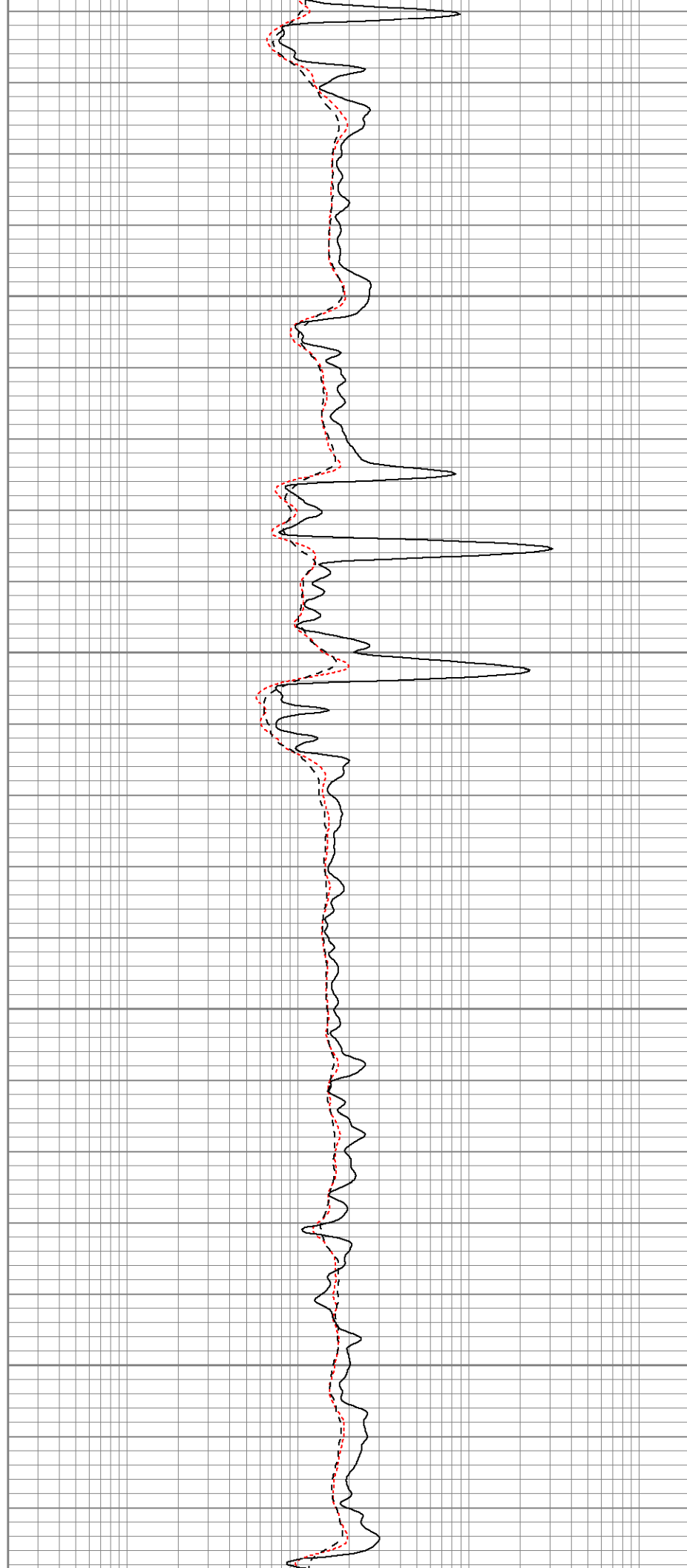


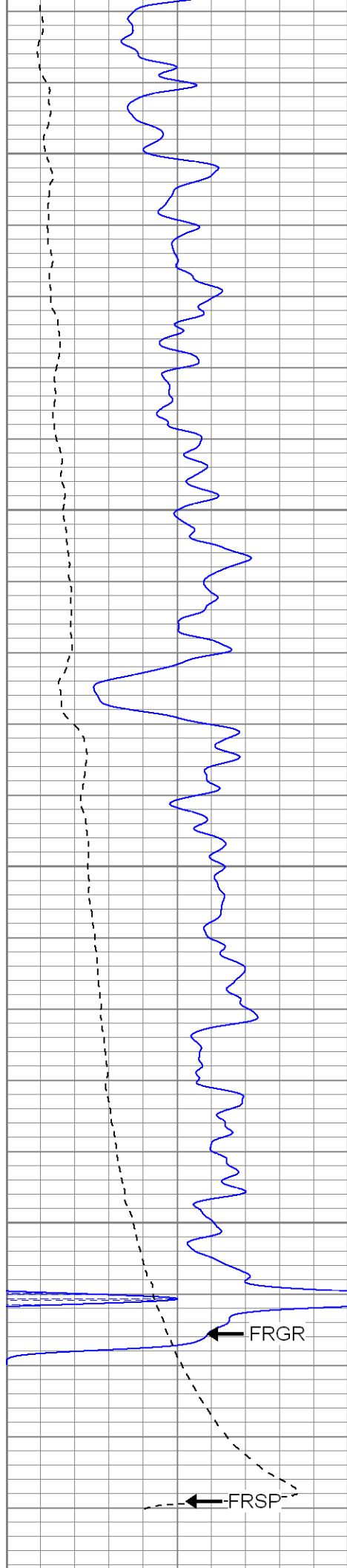
1800

1850

1900

1950





2000

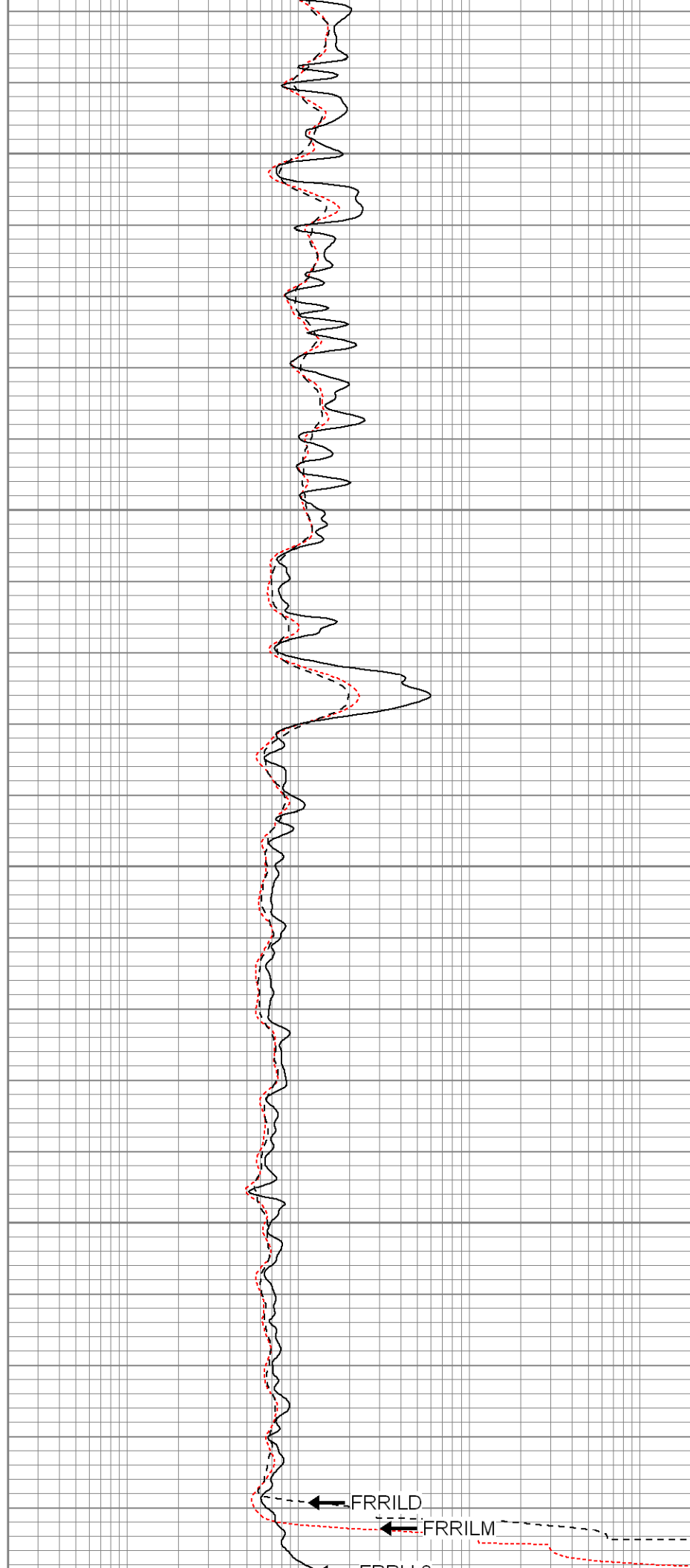
2050

2100

2150

FRGR

FRSP



FRRILD

FRRILM

0	GR (GAPI)	200
-200	SP (mV)	0

0.2	RILM (Ohm-m)	2000
0.2	RILD (Ohm-m)	2000
0.2	RLL3 (Ohm-m)	2000



SUPERIOR

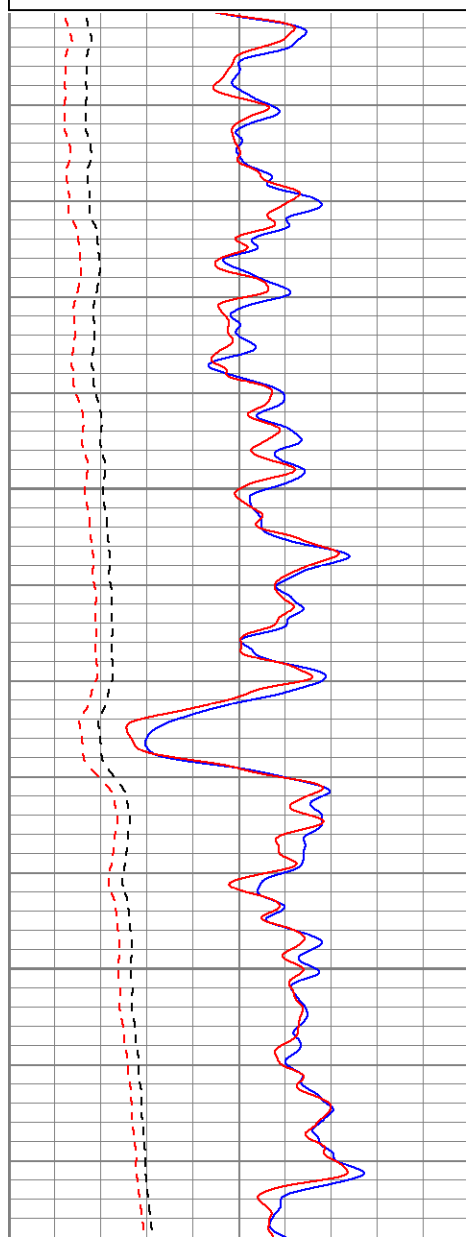
Black Lick, Pa.
Mercer, Pa.
Wooster, Oh.
Cleveland, Ok.
Trinidad, Co.

Repeat Pass

Database File: xtone2504.db
Dataset Pathname: pass1.1
Presentation Format: dil
Dataset Creation: Thu Jun 26 14:26:53 2008 by Calc Open-Cased 070814
Charted by: Depth in Feet scaled 1:240

0	GR (GAPI)	200
-200	SP (mV)	0
0	GR-repeat (GAPI)	200
-200	SP-repeat (mV)	0

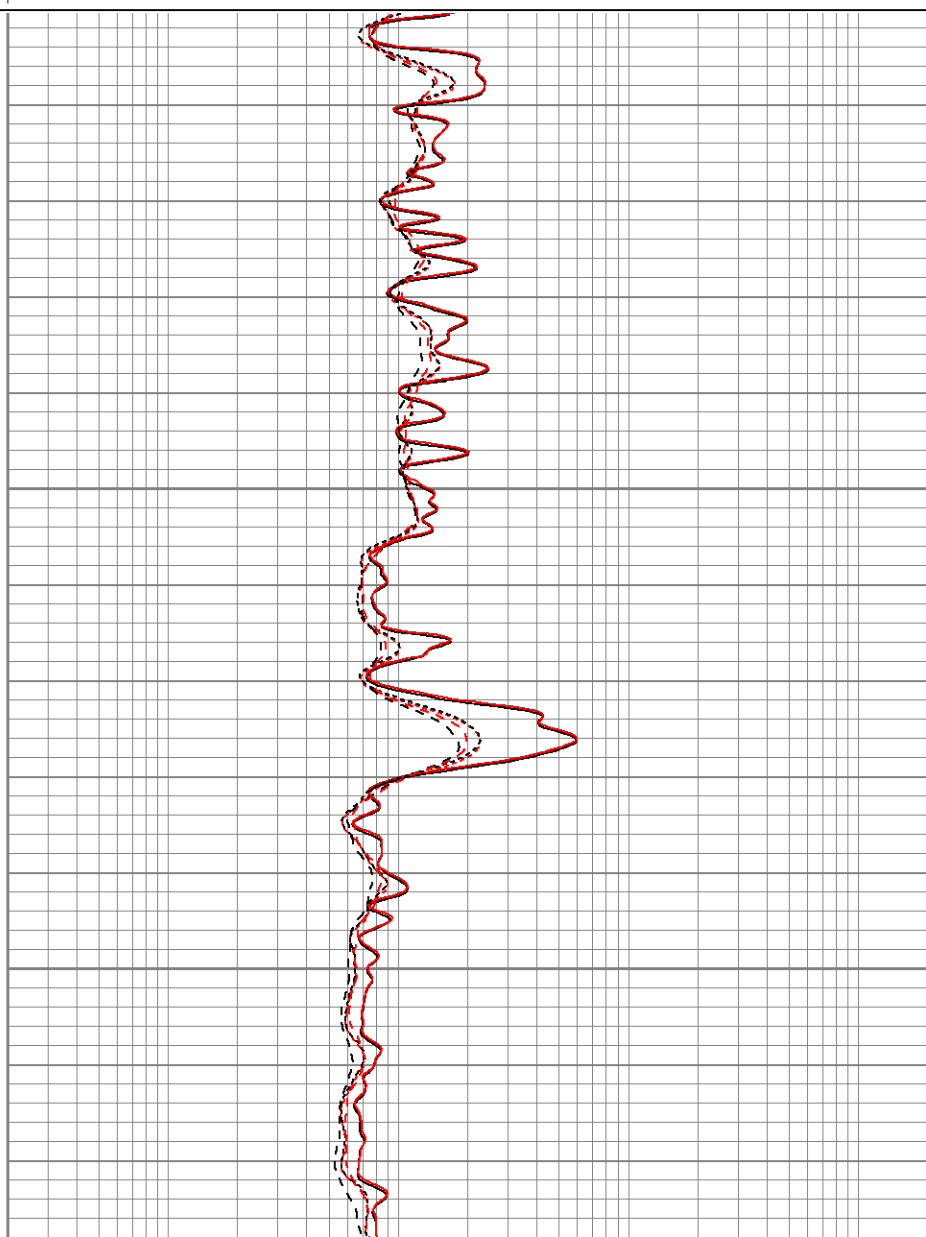
0.2	RILM (Ohm-m)	2000
0.2	RILD (Ohm-m)	2000
0.2	RLL3 (Ohm-m)	2000
0.2	RLL3-repeat (Ohm-m)	2000
0.2	RILM-repeat (Ohm-m)	2000
0.2	RILD-repeat (Ohm-m)	2000

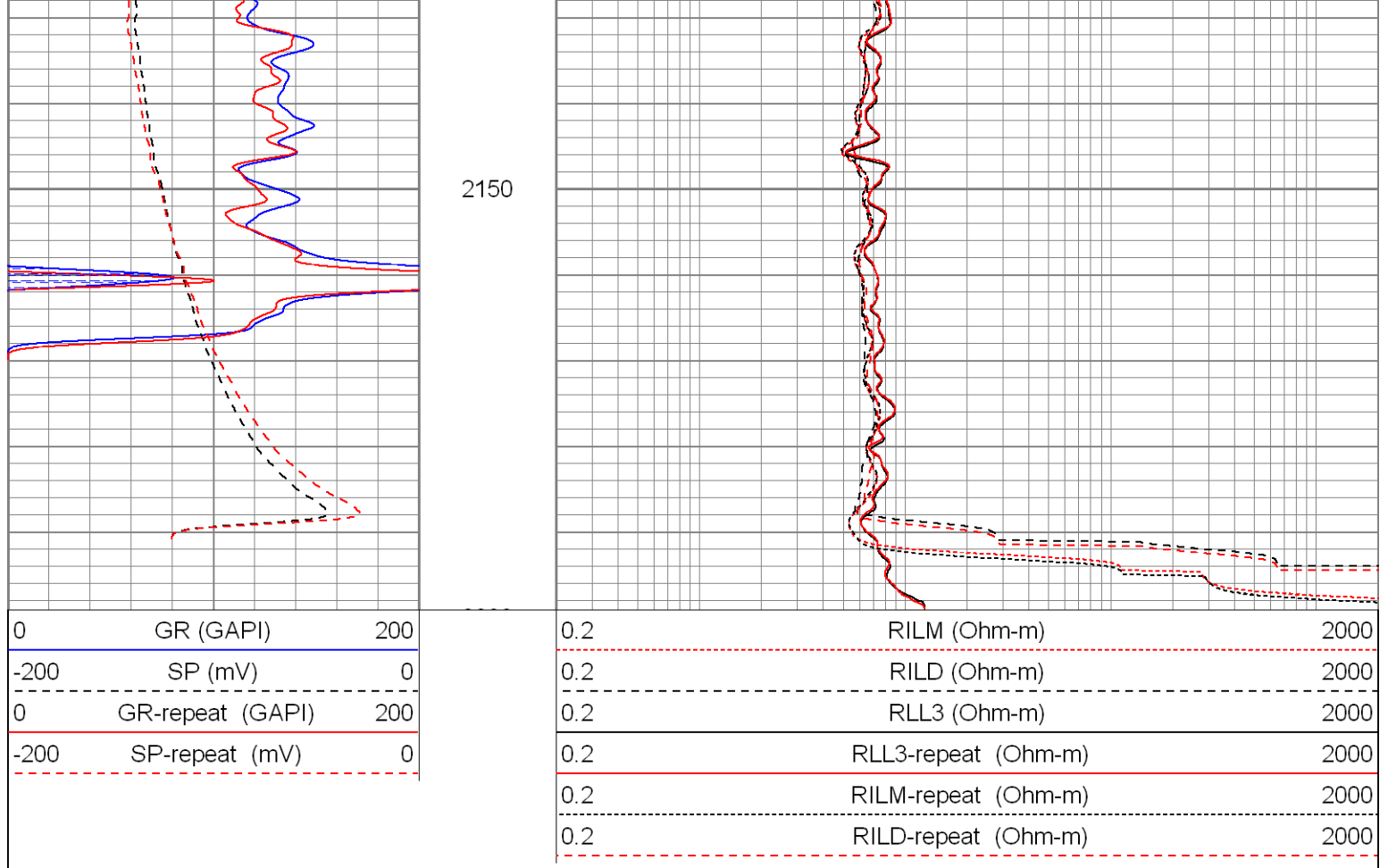


2000

2050

2100





Calibration Report

Database File: xtone2504.db
 Dataset Pathname: pass1
 Dataset Creation: Thu Jun 26 13:44:12 2008 by Log Open-Cased 070814

Dual Induction Calibration Report

Serial-Model: 080522-Probe
 Surface Cal Performed: Wed Jun 04 14:22:17 2008
 Downhole Cal Performed: Thu Jun 12 12:12:50 2008
 After Survey Verification Performed: Thu Jun 12 12:12:50 2008

Surface Calibration

Loop:	Readings			References			Results	
	Air	Loop		Air	Loop		m	b
Deep	0.006	0.647	V	0.000	400.000	mmho-m	623.790	-3.739
Medium	0.014	0.754	V	0.000	464.000	mmho-m	627.128	-8.884
Internal:	Zero	Cal		Zero	Cal		m	b
Deep	0.007	0.648	V	0.000	400.000	mmho-m	624.783	-4.587
Medium	0.013	0.754	V	0.000	464.000	mmho-m	626.379	-8.017

Downhole Calibration

	Readings			References			Results	
	Zero	Cal		Zero	Cal		m'	b'
Deep	2.604	402.452	mmho-m	0.841	400.206	mmho-m	0.999	-1.760
Medium	1.030	462.308	mmho-m	-0.857	463.698	mmho-m	1.007	-1.894
LL3		7.405	V		1500.000	Ohm-m		
		-0.005	V		20.000	Ohm-m		
		-7.230	V		3745.000	mmho-m		

Compensated Density Calibration Report

Serial-Model: 2118-poilex
 Source / Verifier: /
 Master Calibration Performed: Wed Jun 04 14:20:01 2008

Master Calibration

	Density		Far Detector	Near Detector	
Magnesium	1.710	g/cc	392.00	385.00	cps
Aluminum	2.590	g/cc	93.00	275.00	cps
Spine Angle = 76.84			Density/Spine Ratio = 0.596		
	Size		Reading		
Small Ring	8.80	in	4.39	V	
Large Ring	14.00	in	8.28	V	

Gamma Ray Calibration Report

Serial Number: 2001
 Tool Model: OH
 Performed: Wed Jun 04 09:52:45 2008

Calibrator Value: 1.0 GAPI

Background Reading: 0.0 cps
 Calibrator Reading: 1.0 cps

Sensitivity: 0.2500 GAPI/cps

Neutron Calibration Report

Serial Number: 5145
 Tool Model: G
 Performed: Wed Jun 25 15:29:02 2008

Calibrator Value: 1200 NAPI

Calibrator Reading: 1700 cps

Sensitivity: 0.705882 NAPI/cps

Sensor	Offset (ft)	Schematic	Description	Len (ft)	OD (in)	Wt (lb)
NEU	37.73		None	0.75	1.50	5.00
			NEU-G (5145) Gearhart Epithermal	5.65	3.50	85.00
GR	31.47		GR-OH (2001) 2001	3.56	3.25	40.00
			CDL-poilex (2118)	8.83	4.00	275.00
LSD	23.30					
DCAL	22.89					

