



SUPERIOR
WELL SERVICES
Black Lick, Pa.
Mercer, Pa.
Wooster, Oh.
Cleveland, Ok.
Trinidad, Co.

**CEMENT
BOND
LOG
1000 PSI**

Company XTO Energy, Inc.
Well New Elk 25-02
Field Purgatoire River
County Las Animas State CO

Location: API # : 05 071 09474 00

475' FNL & 1931' FEL

SEC 25 TWP 33S RGE 68W

Permanent Datum Ground Level Elevation 7790'
Log Measured From Ground Level
Drilling Measured From Ground Level

Other Services
Press.
CNTRL
Elevation
K.B. -----
D.F. -----
G.L. 7790'

Date Run Number 4-7-08

Depth Driller 2350'

Depth Logger 1940'

Bottom Logged Interval 1939'

Top Log Interval Surface

Open Hole Size 7 7/8"

Type Fluid Water

Density / Viscosity ///

Max. Recorded Temp. 131F

Estimated Cement Top 184'

Time Well Ready ROA

Time Logger on Bottom 9:50AM

Equipment Number T0702

Location Trinidad

Recorded By E. Ray

Witnessed By Mr. Ryan Rensink

Borehole Record Bit From To Size Weight From To

Casing Record Size Wgt/Ft Top Bottom

Surface String 8 5/8" 00 586'

Prot. String 5 1/2" 00 NA

Production String

Liner

<<< Fold Here >>>

All interpretations are opinions based on inferences from electrical or other measurements and we cannot and do not guarantee the accuracy or correctness of any interpretation, and we shall not, except in the case of gross or willful negligence on our part, be liable or responsible for any loss, costs, damages, or expenses incurred or sustained by anyone resulting from any interpretation made by any of our officers, agents or employees. These interpretations are also subject to our general terms and conditions set out in our current Price Schedule.

Comments

Second Bosque Entrance, straight across railroad tracks,
@ Y stay right to Apache Canyon, take first right past windmill,
follow road up hill thru one location, @ fork stay left to location

CBL ran under 1000 PSI

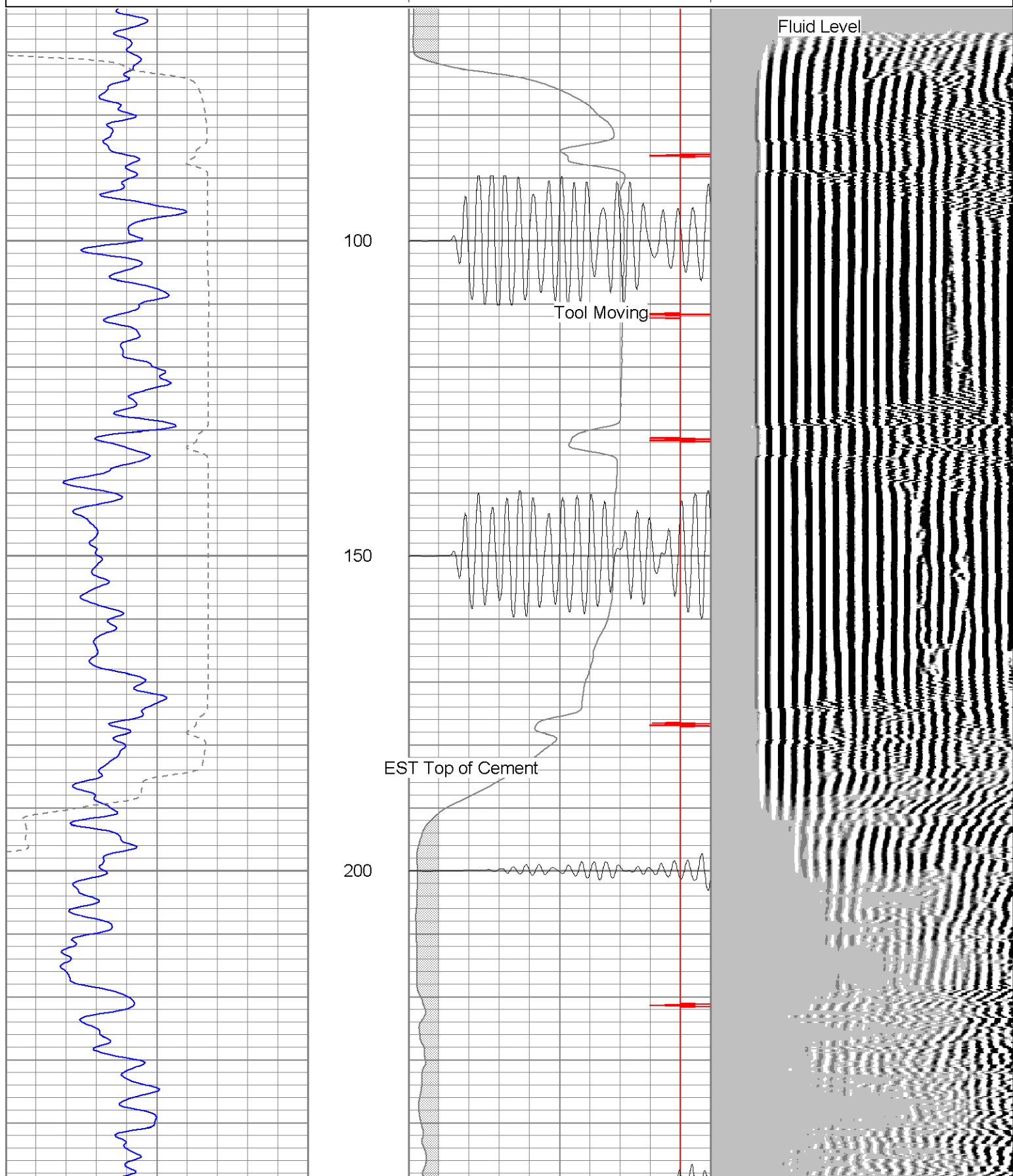


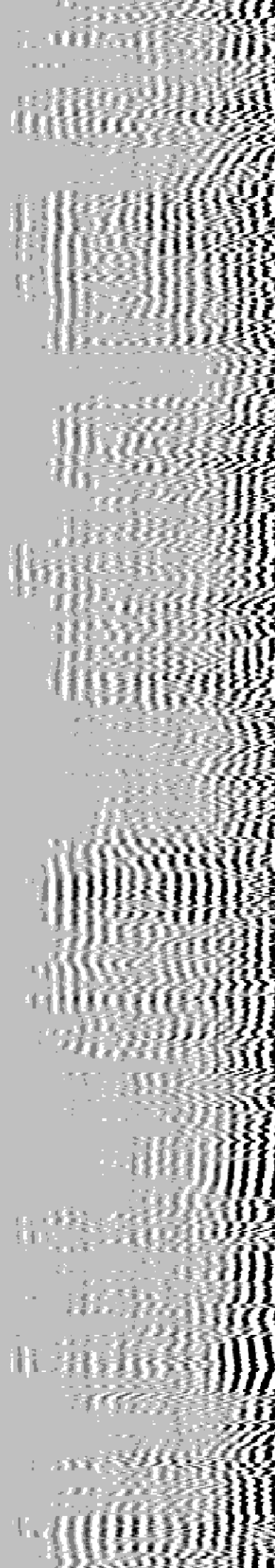
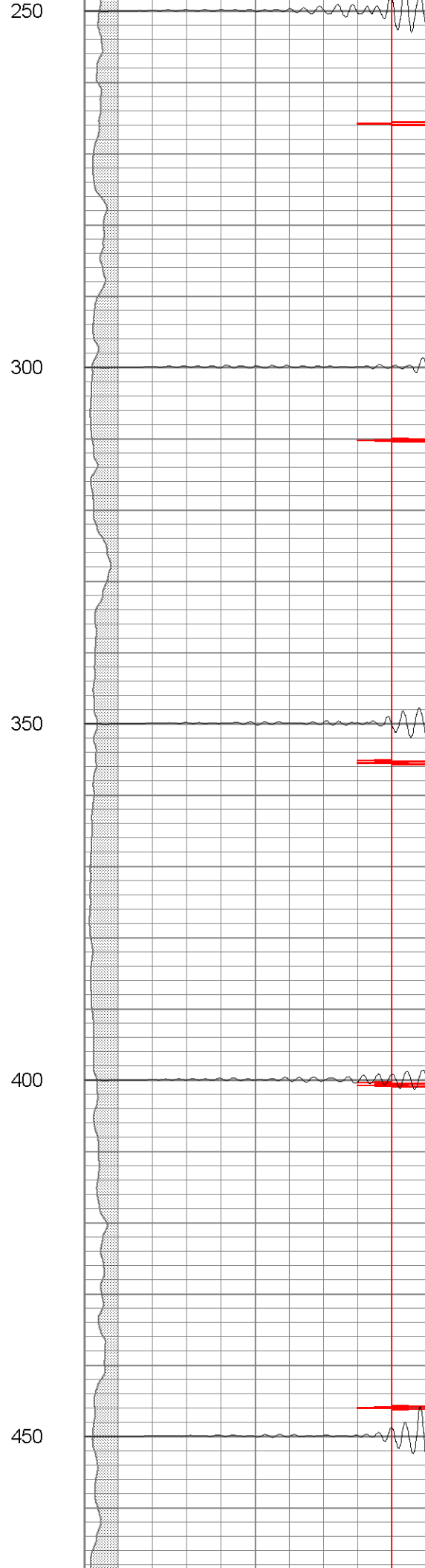
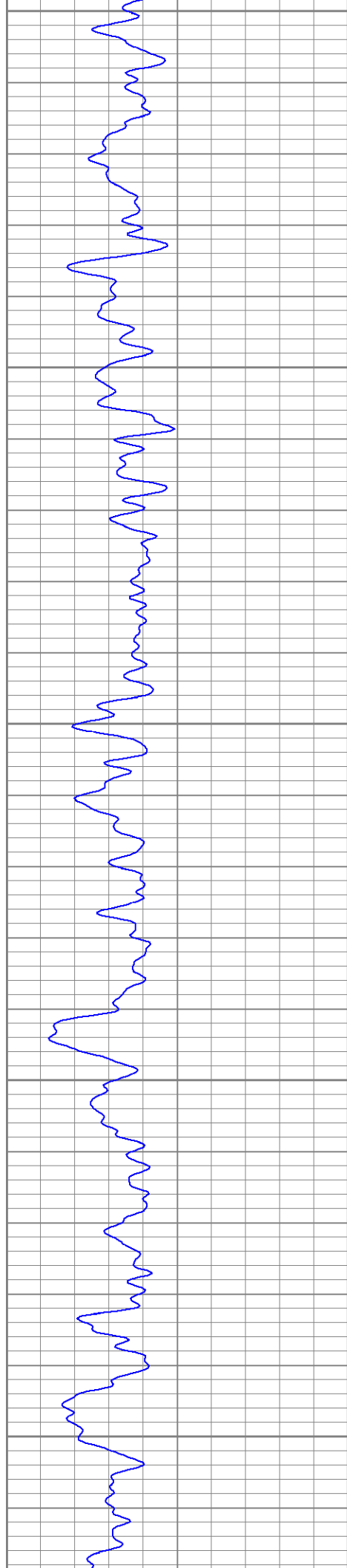
SUPERIOR
Black Lick, Pa.
Mercer, Pa.
Wooster, Oh.
Cleveland, Ok.
Trinidad, Co.

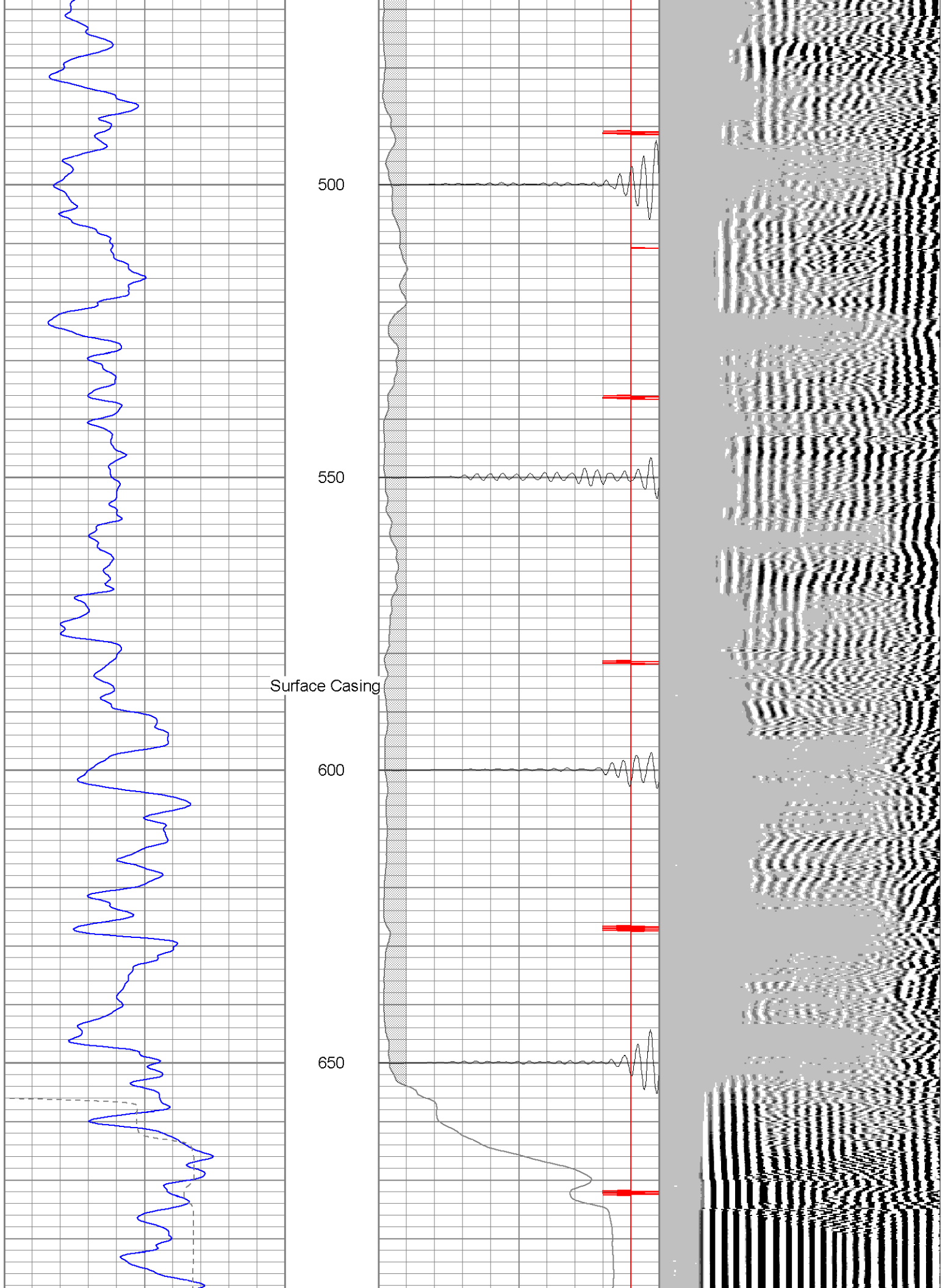
Main Pass (1000 PSI)

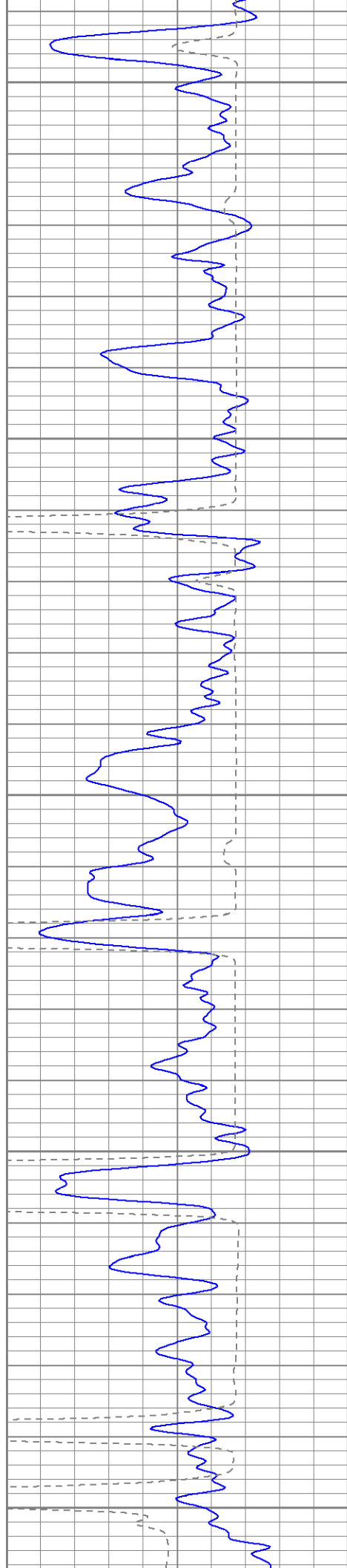
Database File: ne250240708b.db
Dataset Pathname: pass2.1
Presentation Format: cblt2
Dataset Creation: Mon Apr 07 12:12:24 2008 by Calc Std Casedhole 07081
Charted by: Depth in Feet scaled 1:240

0	GR (GAPI)	200	0	Amplitude (mV)	100	200	variable density	1200
400	TT3 (usec)	200	18	Collar Locator	-2			
-----			200	CBL5	1200			









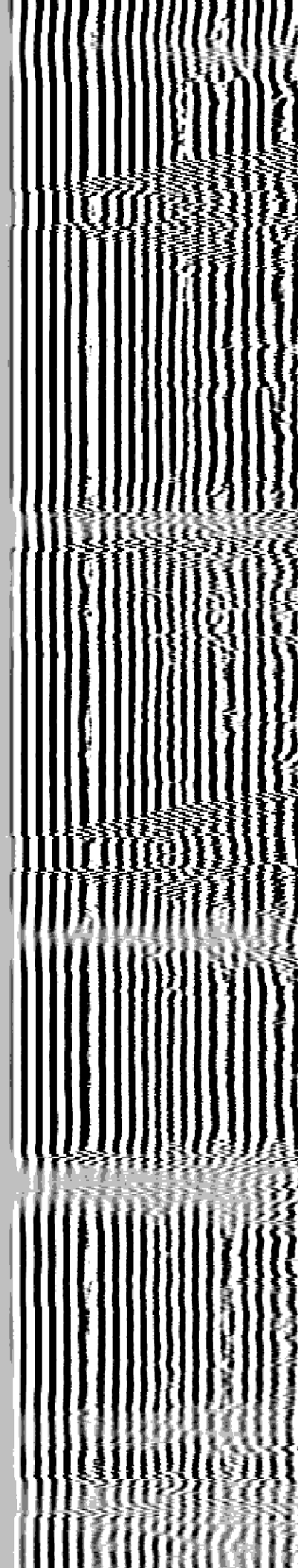
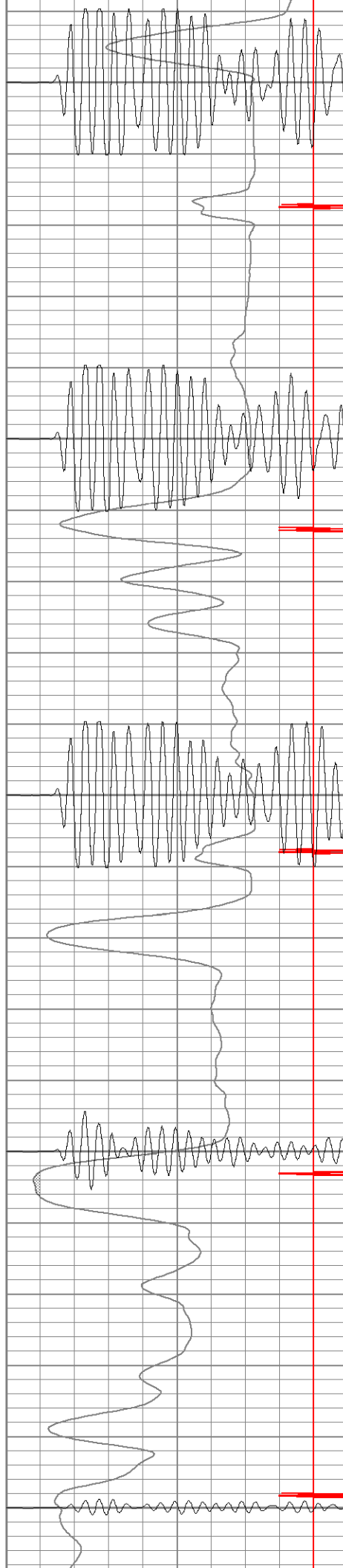
700

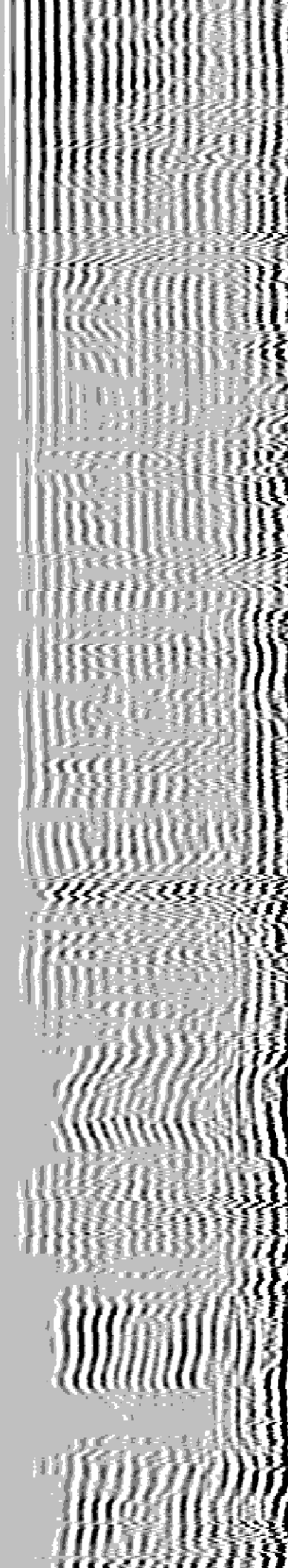
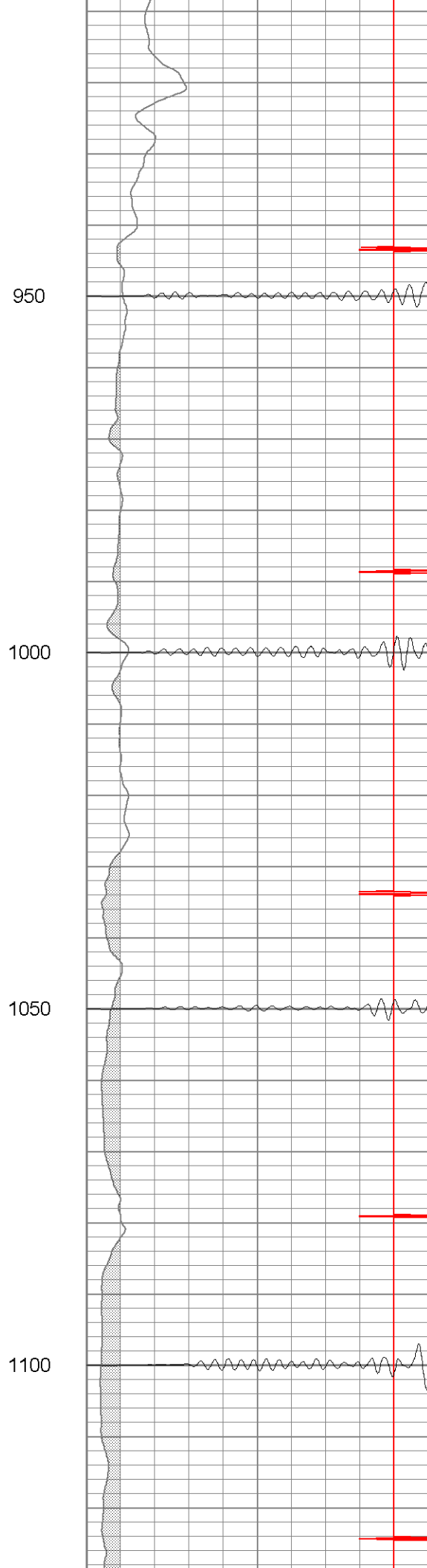
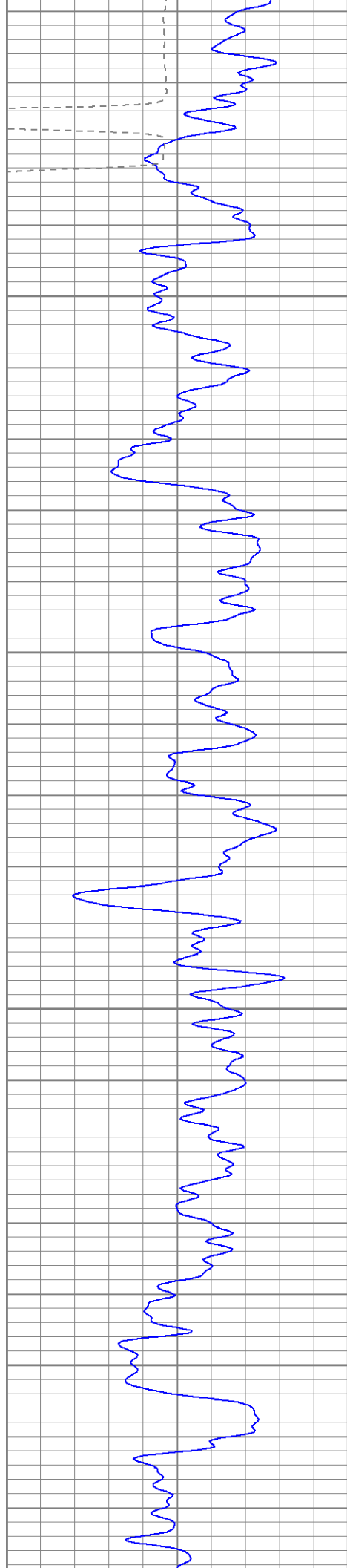
750

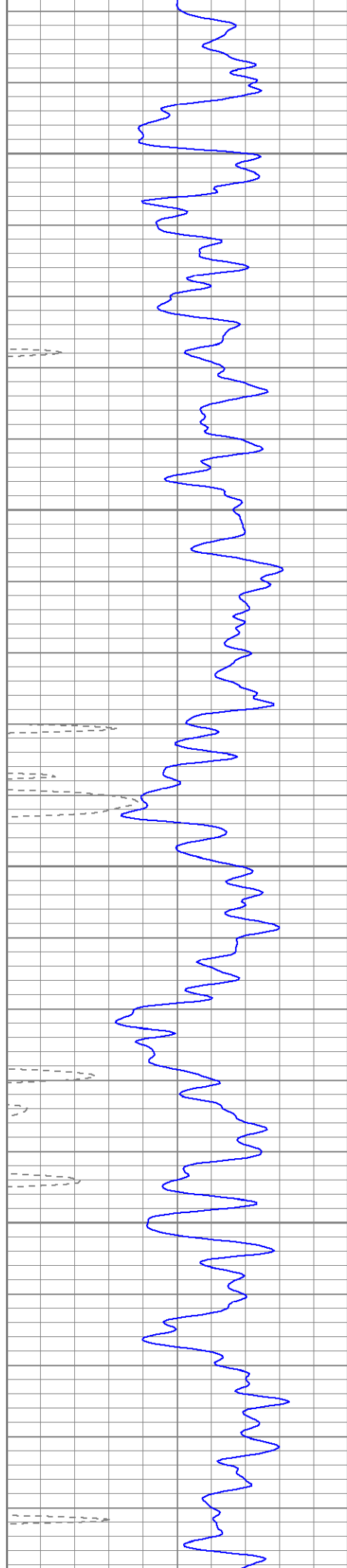
800

850

900





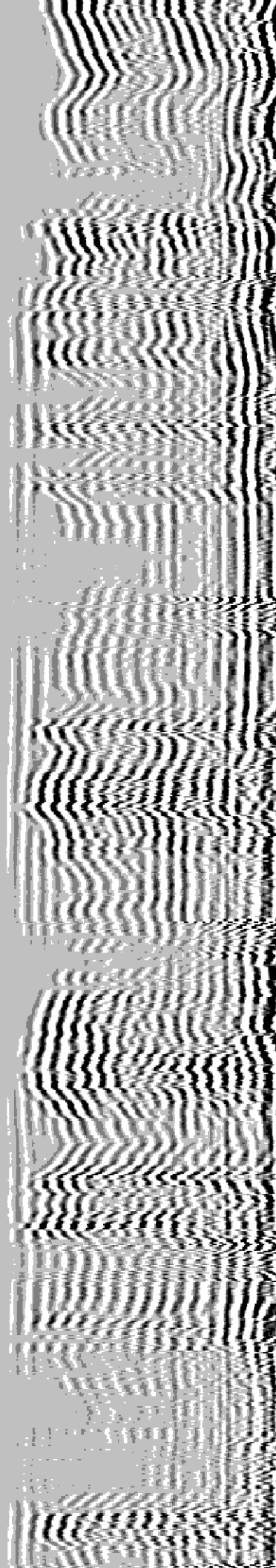
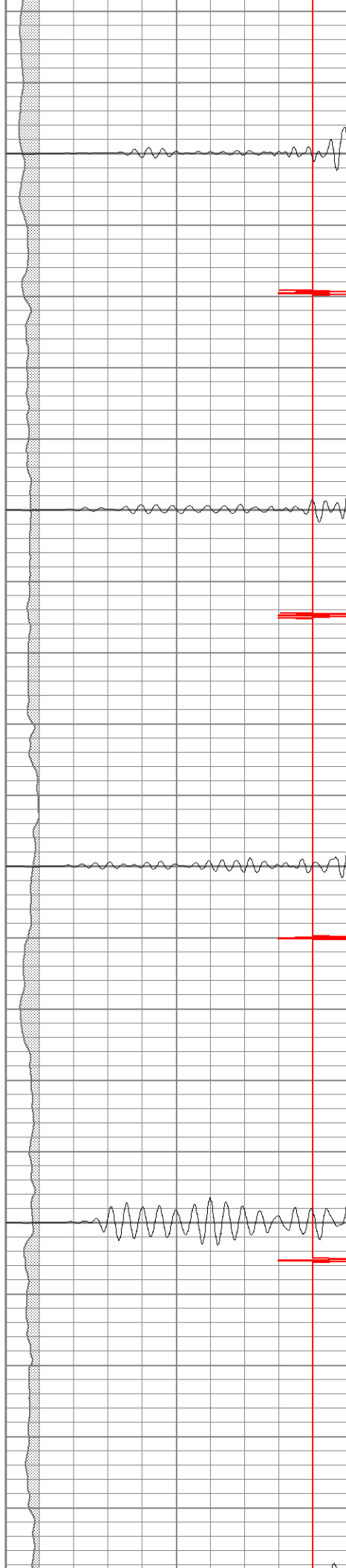


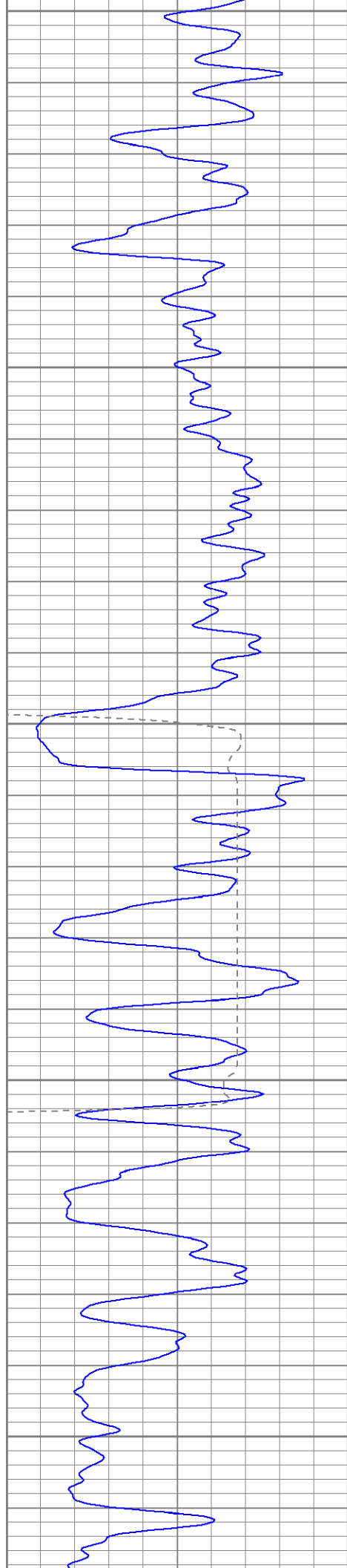
1150

1200

1250

1300





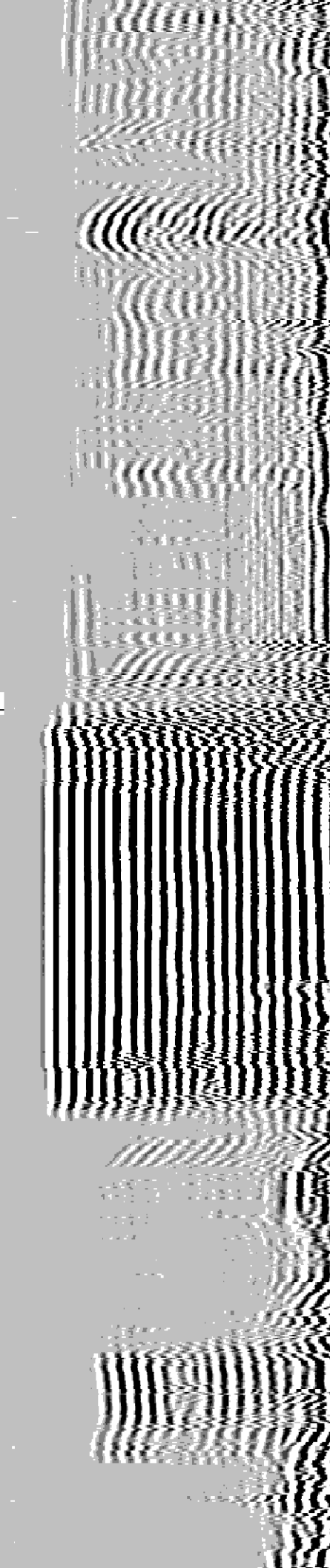
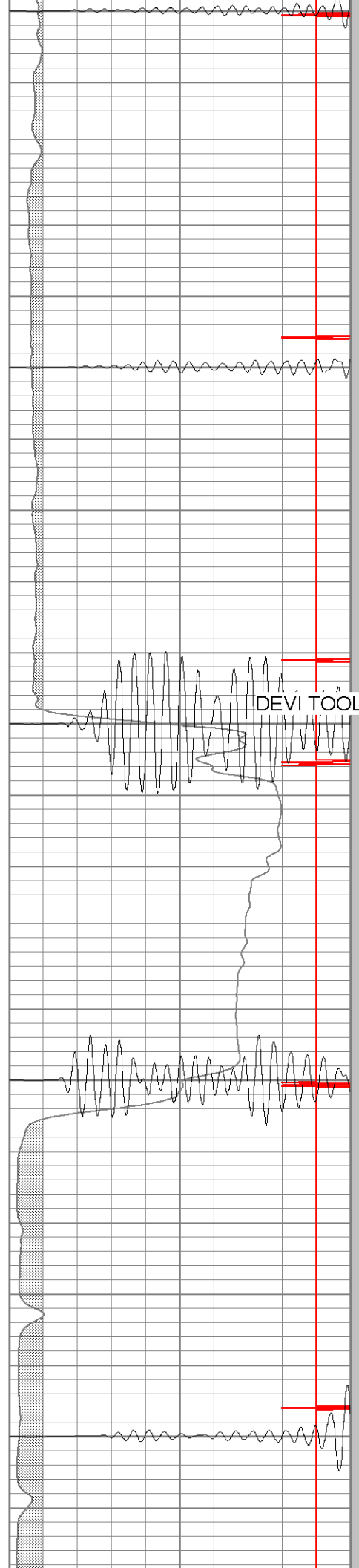
1350

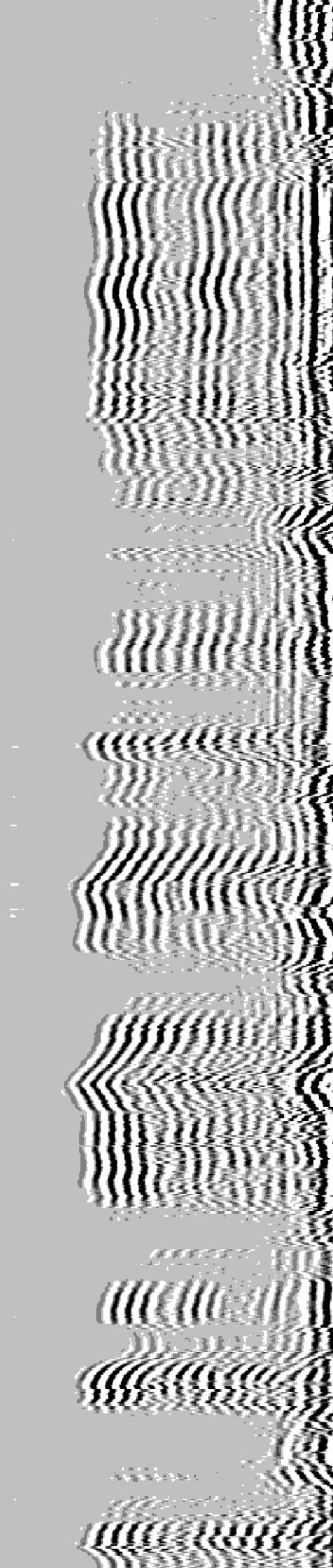
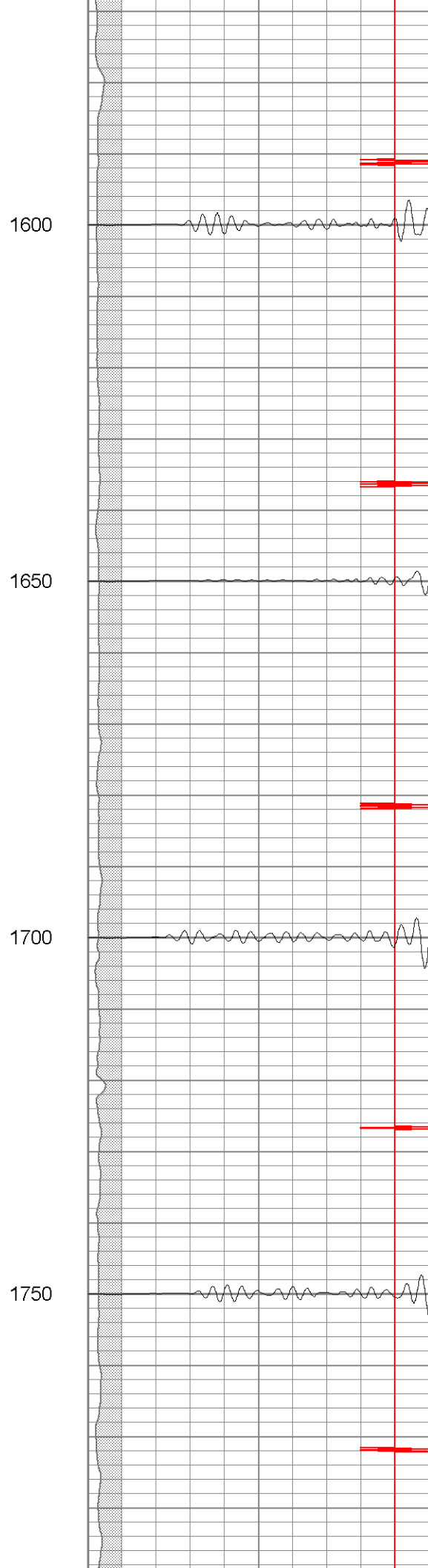
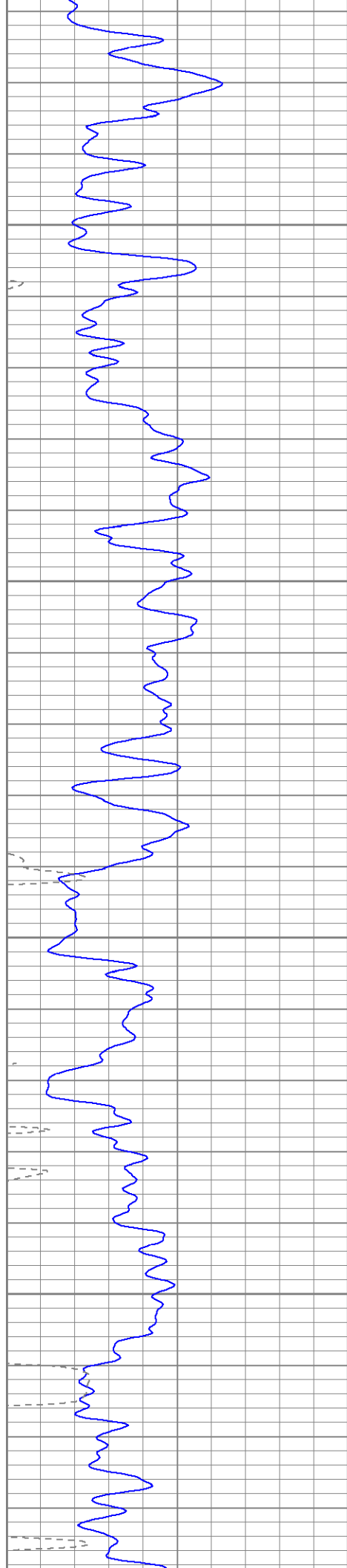
1400

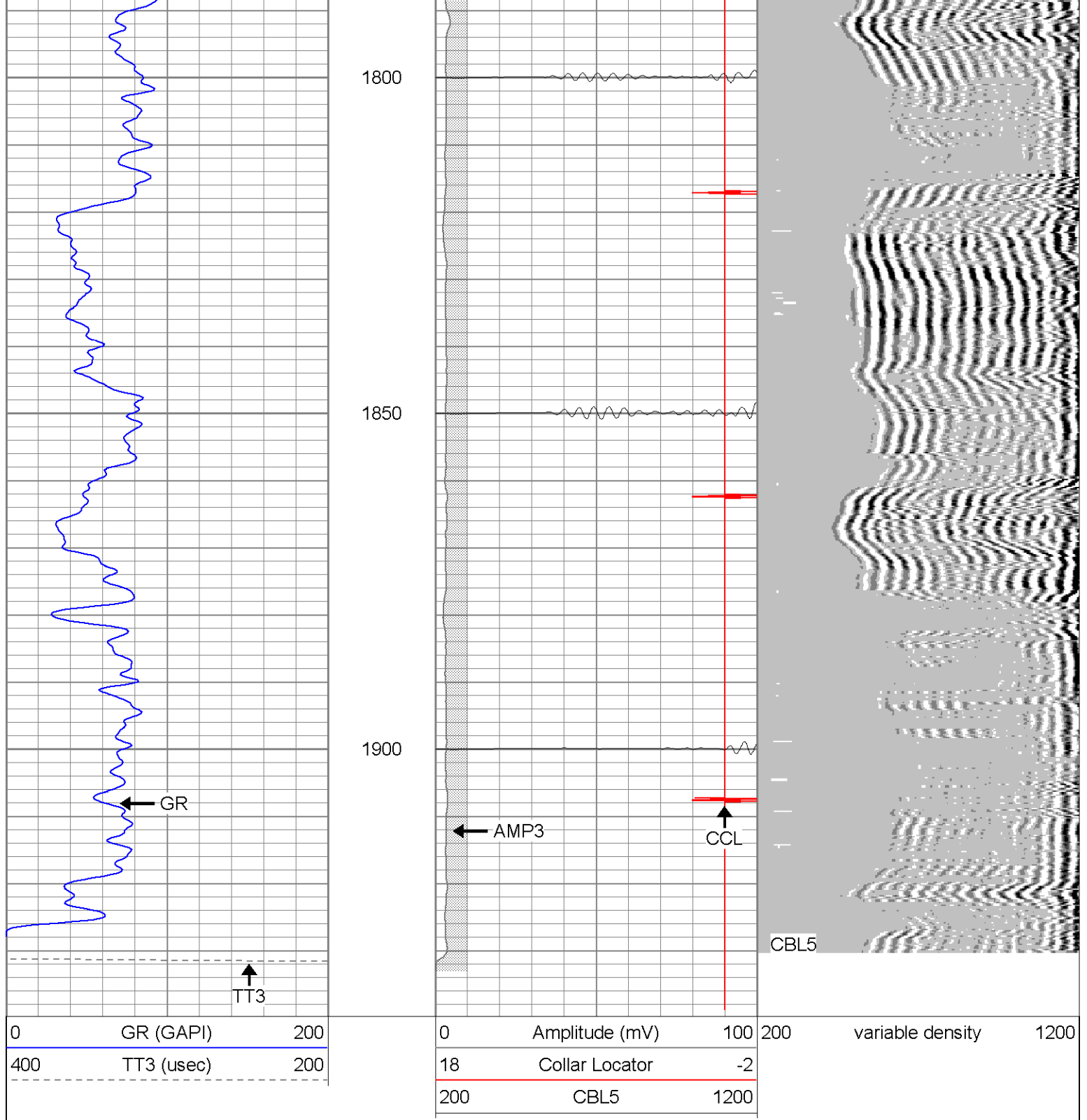
1450

1500

1550







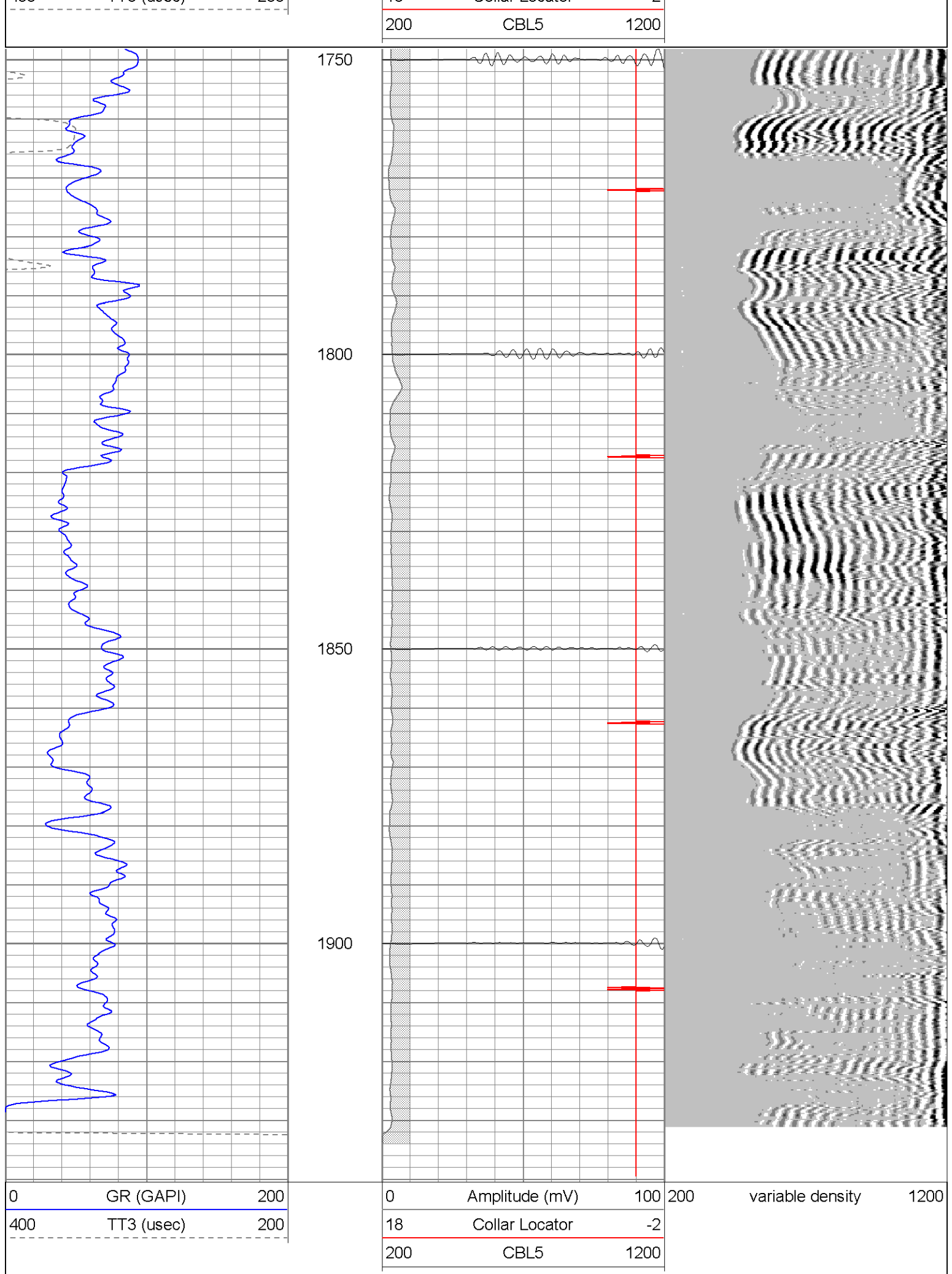
SUPERIOR

Black Lick, Pa.
Mercer, Pa.
Wooster, Oh.
Cleveland, Ok.
Trinidad, Co.

Repeat Section (0 PSI)

Database File: ne250240708b.db
 Dataset Pathname: pass1.1
 Presentation Format: cbt2
 Dataset Creation: Mon Apr 07 12:12:45 2008 by Calc Std Casedhole 07081
 Charted by: Depth in Feet scaled 1:240

0	GR (GAPI)	200	0	Amplitude (mV)	100	200	variable density	1200
400	TT3 (usec)	200	18	Collar Locator	-2			



Calibration Report

Database File: ne250240708b.db
 Dataset Pathname: pass1
 Dataset Creation: Mon Apr 07 11:04:02 2008 by Log Std Casedhole 07081

Cement Bond Log Calibration Report

Serial Number:	Titan3		
Tool Model:	T3		
Performed:	Wed Apr 02 12:22:39 2008		
Depth:	2230.09	ft	
Casing Diameter:	5.5	in	
	3' Spacing	5' Spacing	
Signal Zero:	1	1	mV
Calibrated Amplitude:	85	85	mV
Reading at Signal Zero:	0.03	0.01	V
Reading in Free Pipe:	1.7	2	V
Gain:	50.2994	42.2111	
Offset:	-0.508982	0.577889	

Gamma Ray Calibration Report

Serial Number:	Titan3	
Tool Model:	T2	
Performed:	Thu Apr 03 10:11:13 2008	
Calibrator Value:	1.0	GAPI
Background Reading:	0.0	cps
Calibrator Reading:	1.0	cps
Sensitivity:	1.1000	GAPI/cps

Sensor	Offset (ft)	Schematic	Description	Len (ft)	OD (in)	Wt (lb)
GR	13.64		C Longer Production CENT	2.49	1.83	2.00
			GR-T2 (Titan3)	2.52	2.44	25.00
WVF5	9.49		CBL-T3 (Titan3)	7.23	2.25	110.00
WVF3	8.49					
CCL	0.83		X	3.00	3.00	25.00
			CCL-T5 (Titan3) Long	2.15	2.75	15.00

Dataset: ne250240708b.db: field/well/run1/pass1
 Total Length: 17.40 ft
 Total Weight: 177.00 lb
 O.D. 3.00 in