



**SUPERIOR**  
Black Lick, Pa.  
Mercer, Pa.  
Wooster, Oh.  
Cleveland, Ok.  
Trinidad, Co.

# CEMENT BOND GAMMA RAY 1000 PSI

Company XTO Energy Inc.

Well New Elk 25-02

Field Purgatorie River

County Las Animas

State CO

Company XTO Energy Inc.

Well New Elk 25-02

Field Purgatorie River

County Las Animas

State CO

Location:

API # : 05 071 09474 00

475' FNL & 1931' FEL

SEC 25 TWP 33S RGE 68W

Permanent Datum Ground Level Elevation 7790'  
Log Measured From Ground Level  
Drilling Measured From Ground Level

Other Services  
PRES  
CONTROL/  
TEMP  
Elevation

K.B. -----  
D.F. -----  
G.L. 7790'

Date

4/2/08

Run Number

one

Depth Driller

2350'

Depth Logger

2256'

Bottom Logged Interval

2252'

Top Log Interval

Surf.

Open Hole Size

7 7/8"

Type Fluid

water

Density / Viscosity

///

Max. Recorded Temp.

131F

Estimated Cement Top

690'

Time Well Ready

9:45

Time Logger on Bottom

9:55

Equipment Number

0703

Location

Trinidad

Recorded By

Worley

Witnessed By

Mr. Rensink

Run Number

Bit

From

To

Size

Weight

From

To

Casing Record

Size

Wgt/Ft

Top

Bottom

Surface String

8 5/8"

00

586'

Prot. String

5 1/2"

00

NA

Production String

5 1/2"

00

NA

Liner

5 1/2"

00

NA

<<< Fold Here >>>

All interpretations are opinions based on inferences from electrical or other measurements and we cannot and do not guarantee the accuracy or correctness of any interpretation, and we shall not, except in the case of gross or willful negligence on our part, be liable or responsible for any loss, costs, damages, or expenses incurred or sustained by anyone resulting from any interpretation made by any of our officers, agents or employees. These interpretations are also subject to our general terms and conditions set out in our current Price Schedule.

## Comments

Second Bosque entrance, straight across railroad tracks,  
at Y stay Right to Apache Canyon, take first right past windmill,  
follow road up hill thru one location, at fork stay left to location.

CBL ran under 1000 PSI.



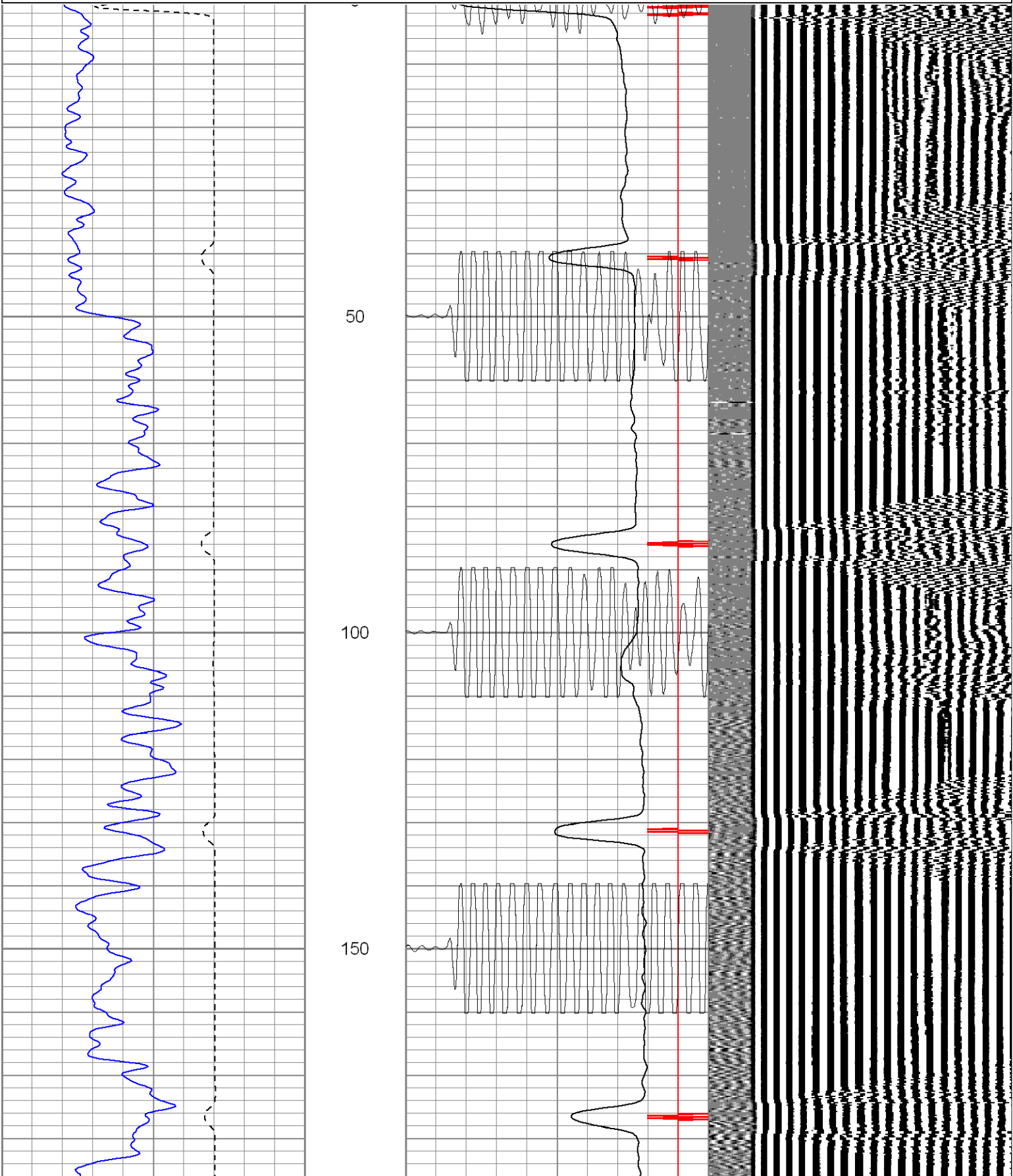
**SUPERIOR**

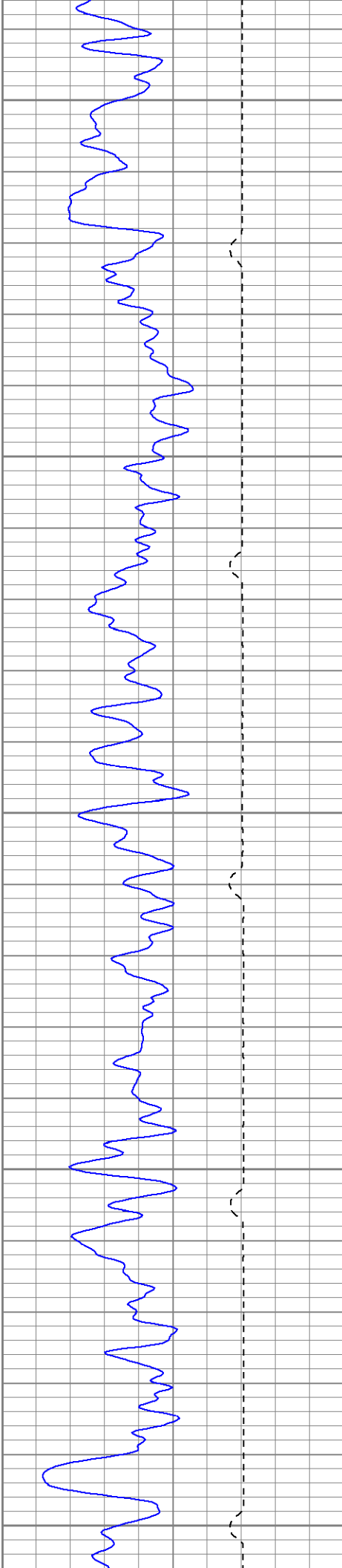
Black Lick, Pa.  
Mercer, Pa.  
Wooster, Oh.  
Cleveland, Ok.  
Trinidad, Co.

# Main Pass 1000 PSI

Database File: ne25-02b4208.db  
Dataset Pathname: pass2.1  
Presentation Format: cblrt  
Dataset Creation: Wed Apr 02 10:54:25 2008 by Calc Open-Cased 071220  
Charted by: Depth in Feet scaled 1:240

0	GR (GAPI)	200	0	AMP3 (mV)	100	200	CBL5	1200
400	TT3 (usec)	200	18	CCL	-2			
			200	CBL5	1200			





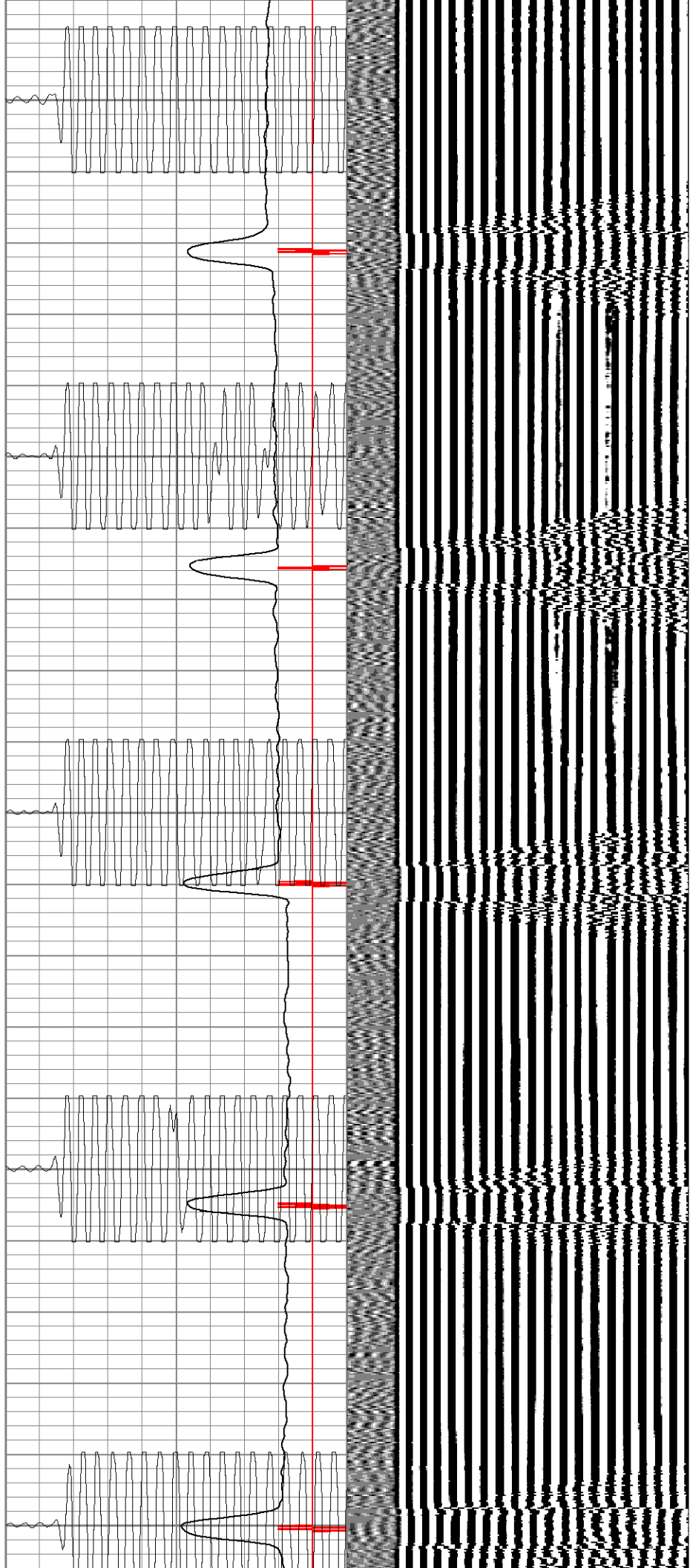
200

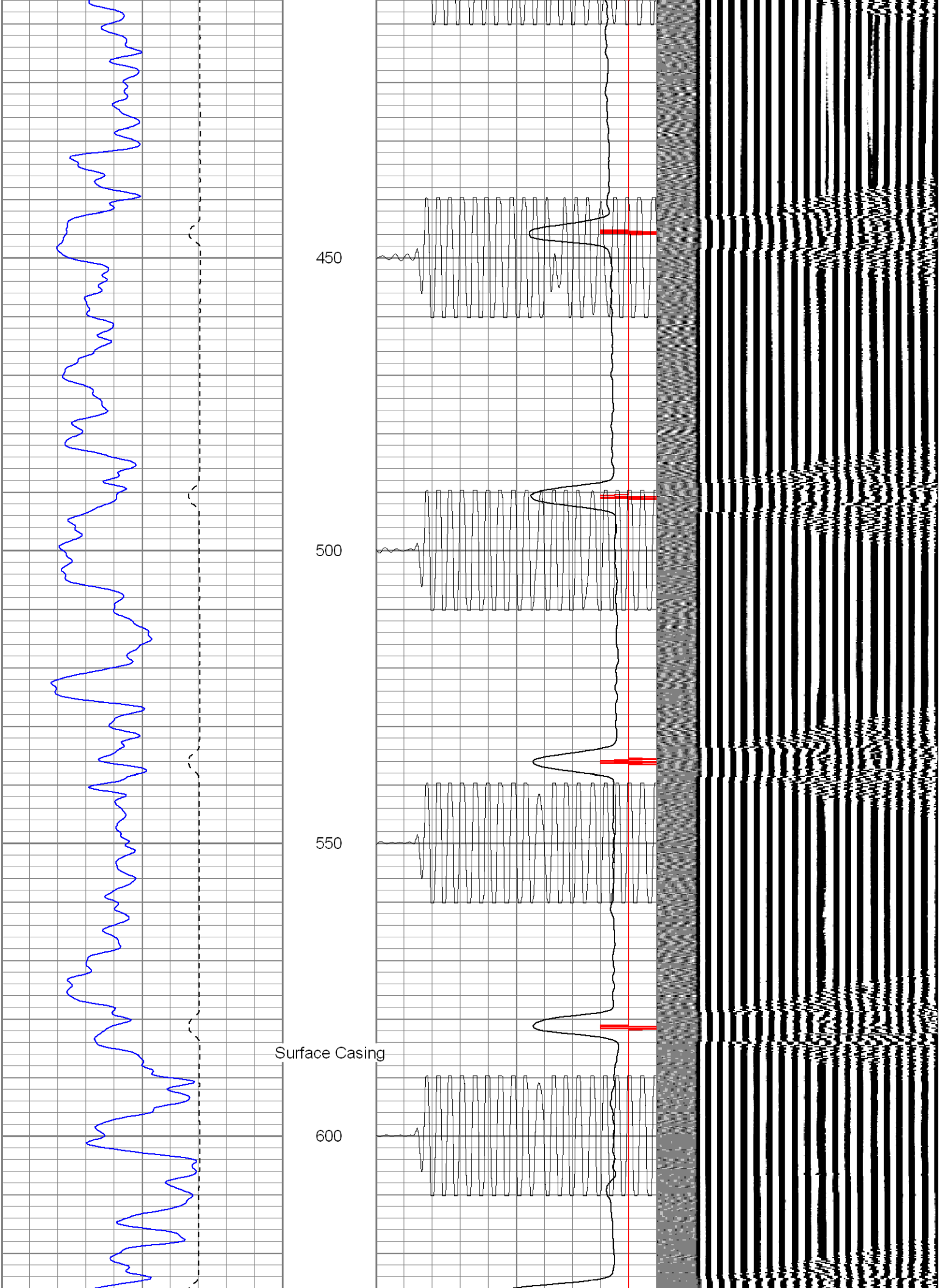
250

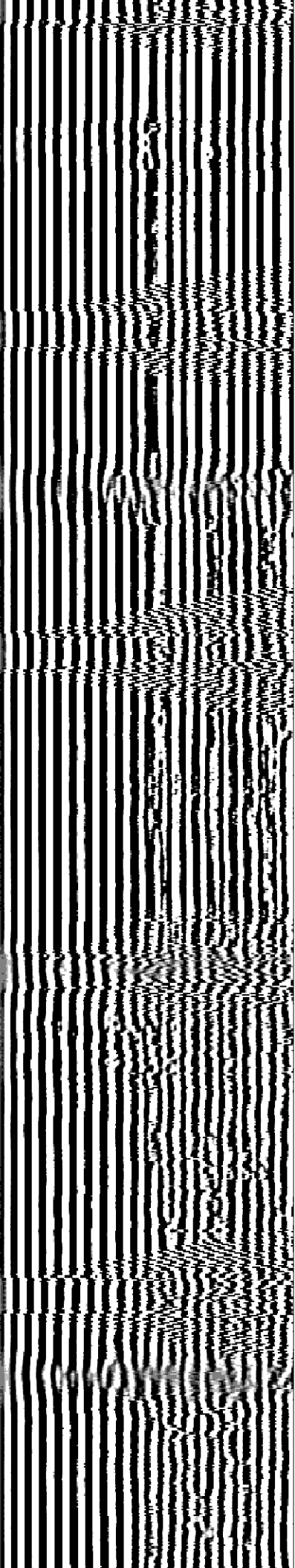
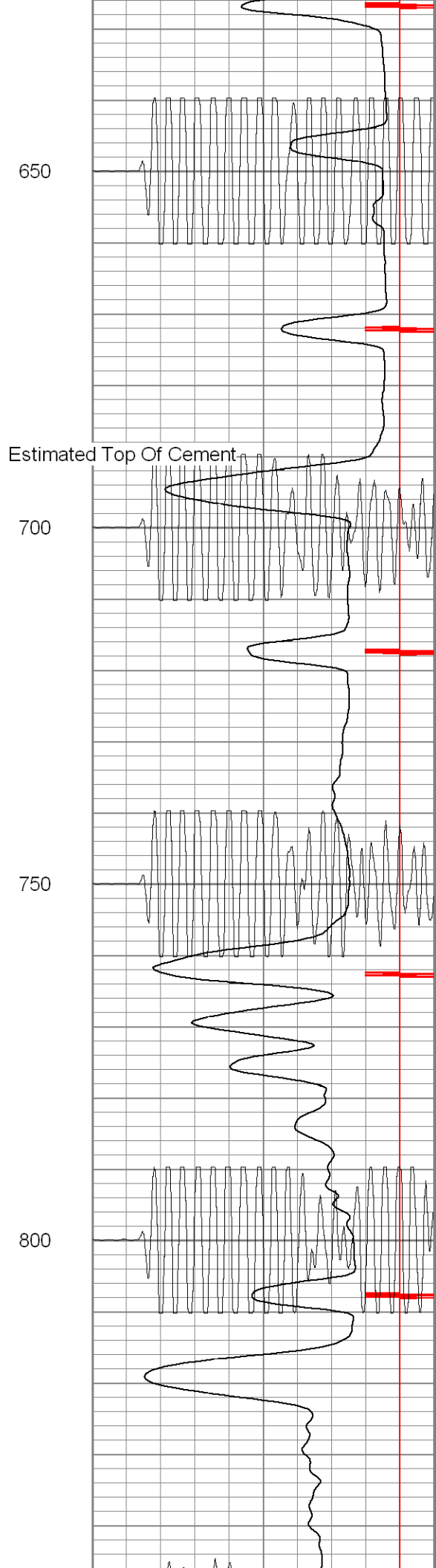
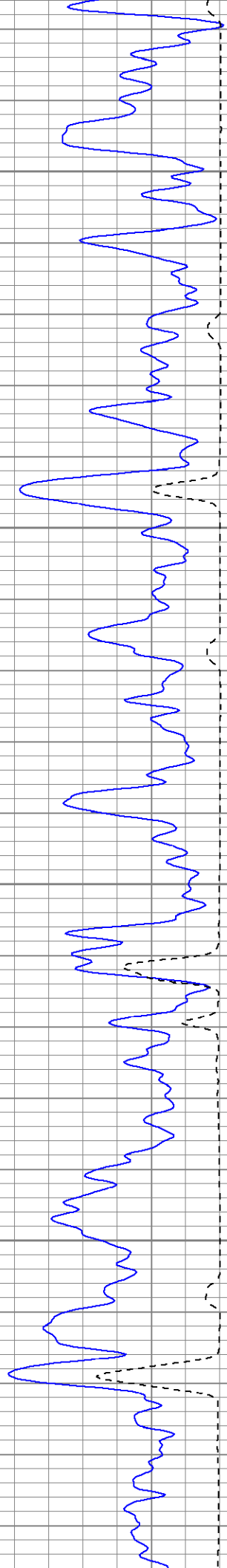
300

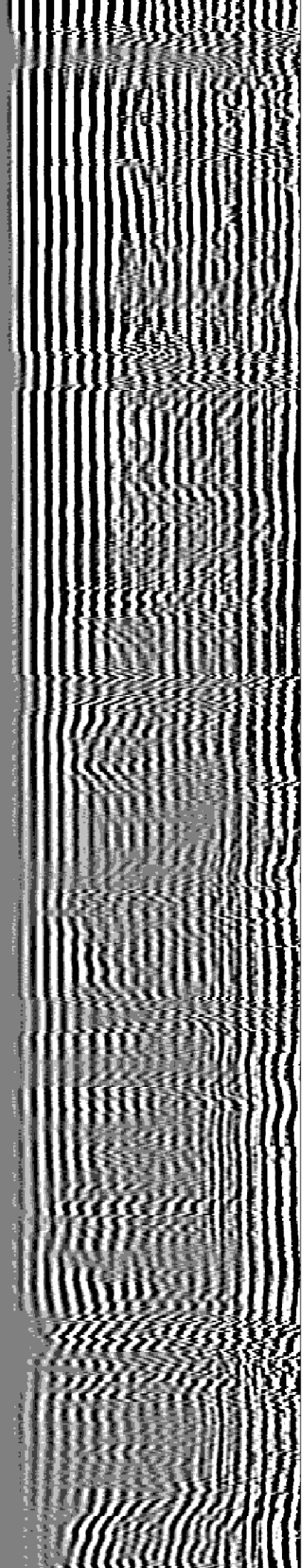
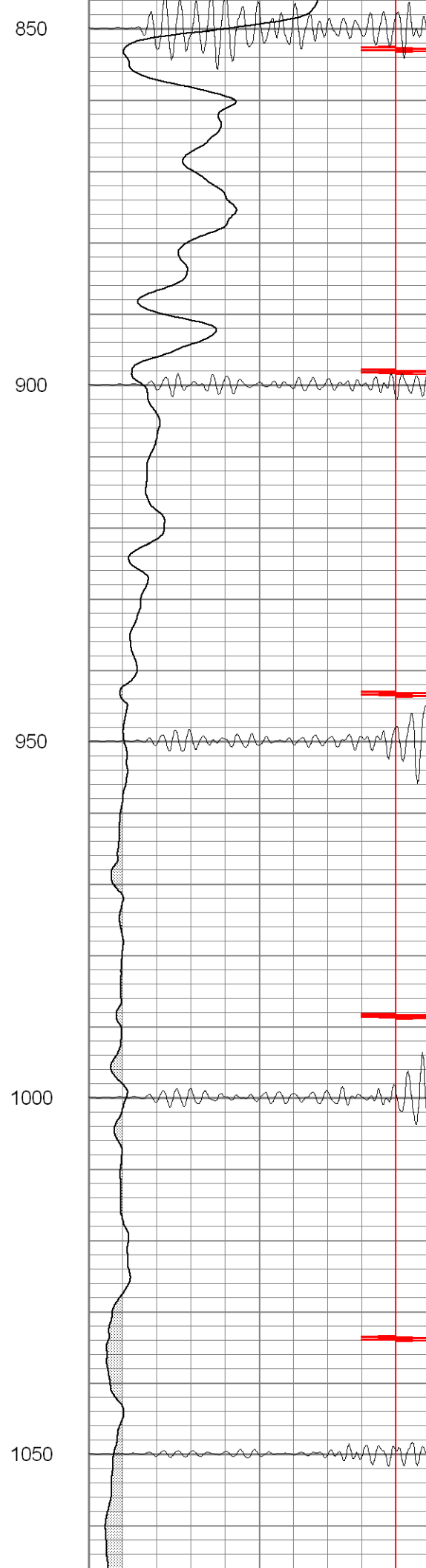
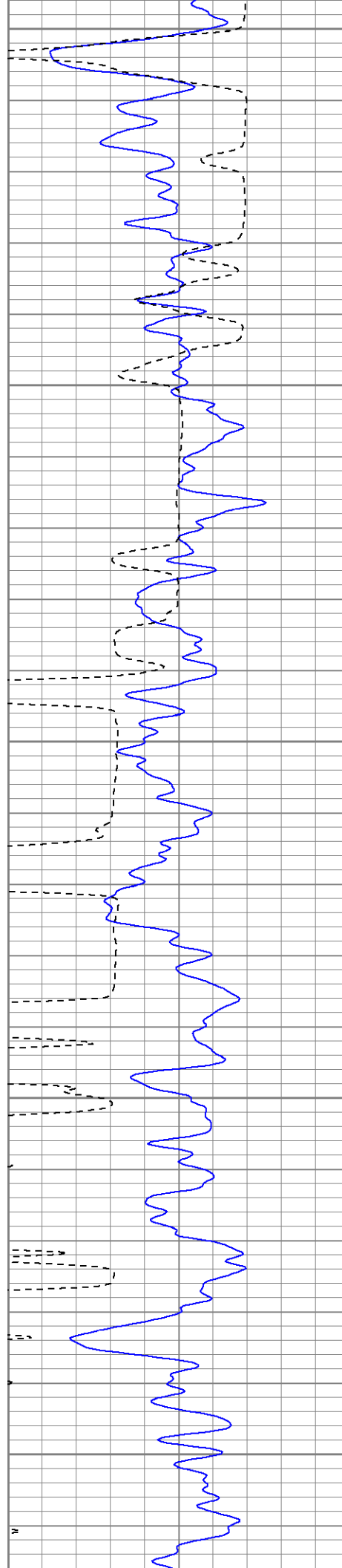
350

400

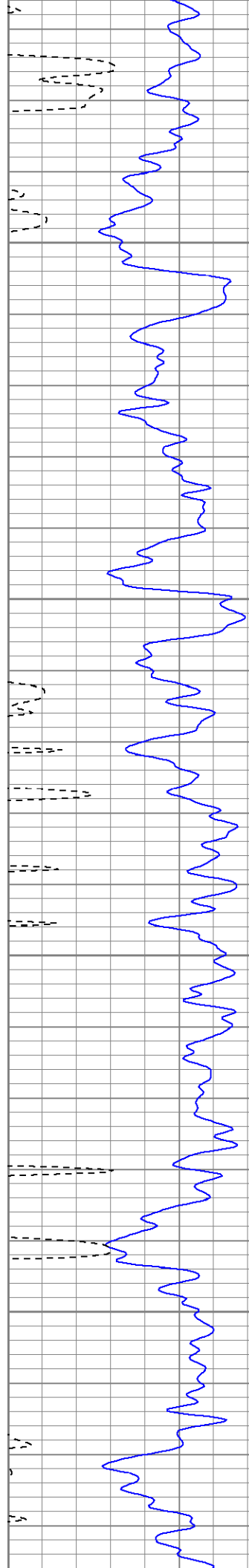










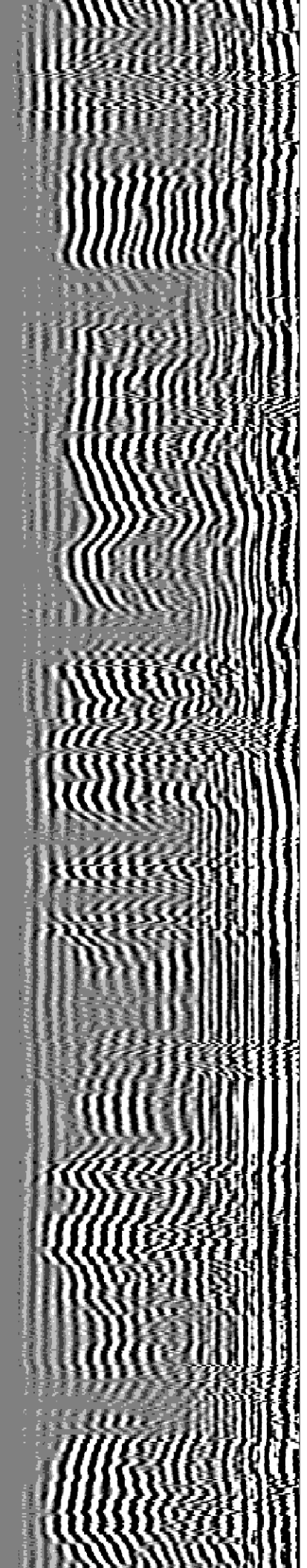


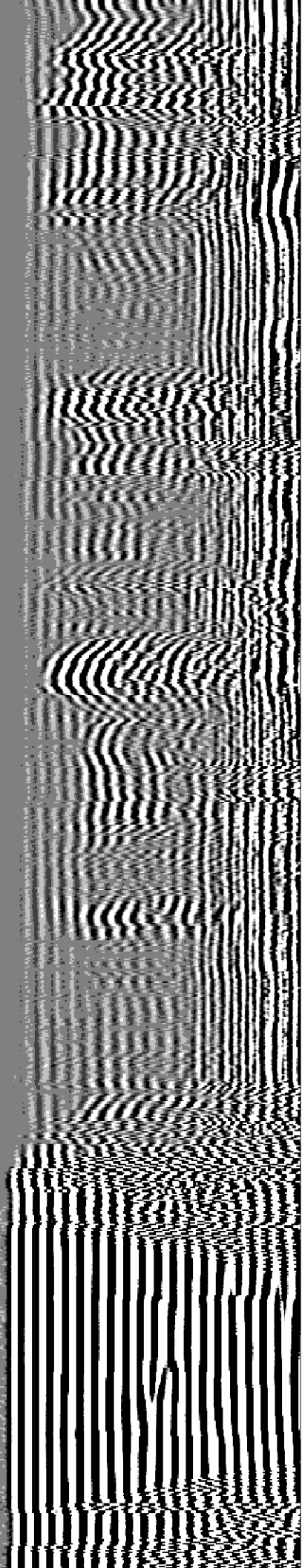
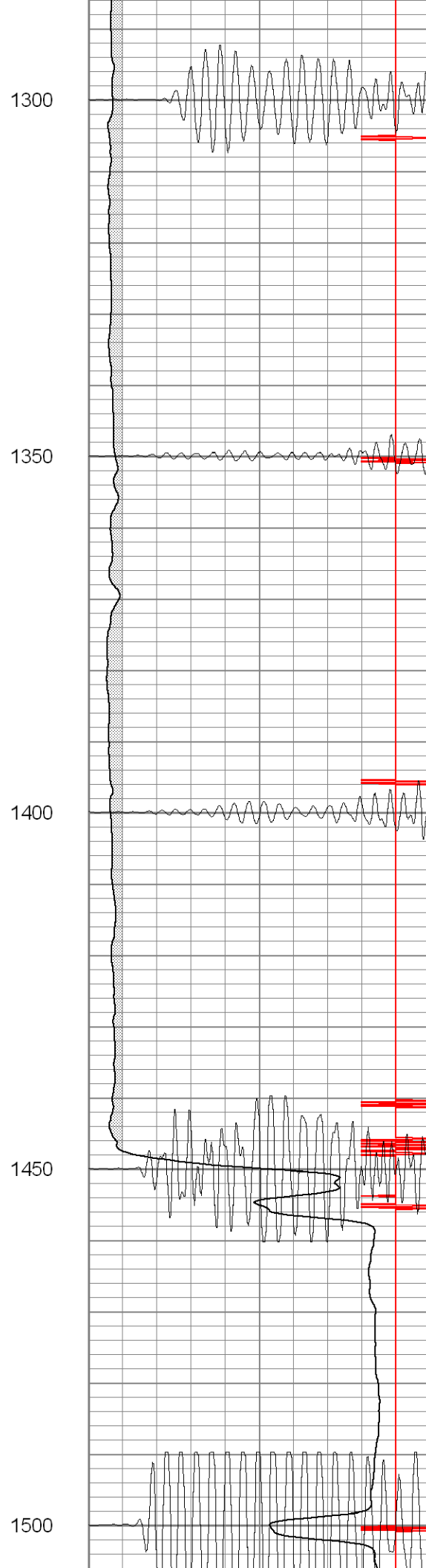
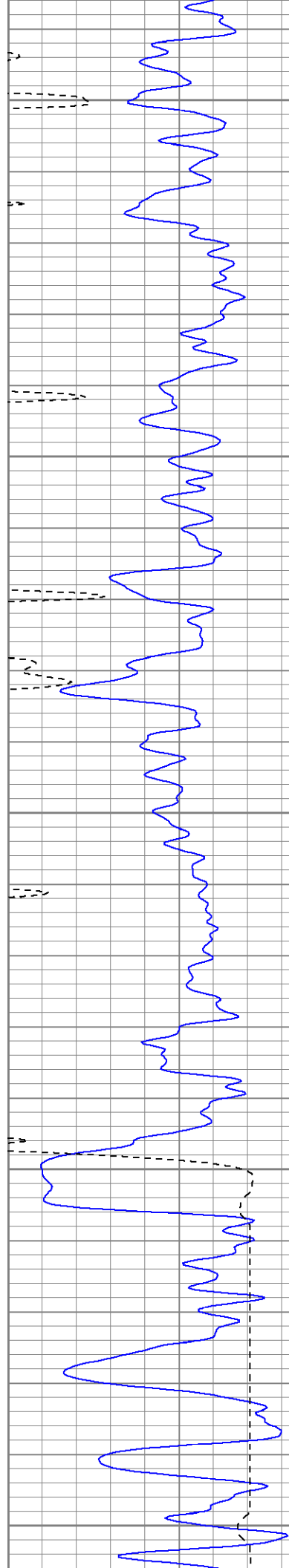
1100

1150

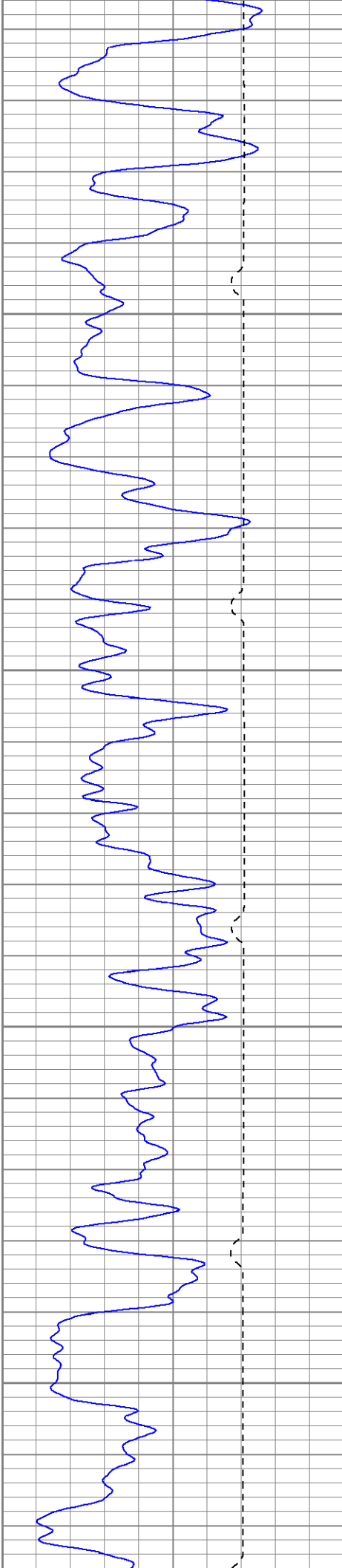
1200

1250







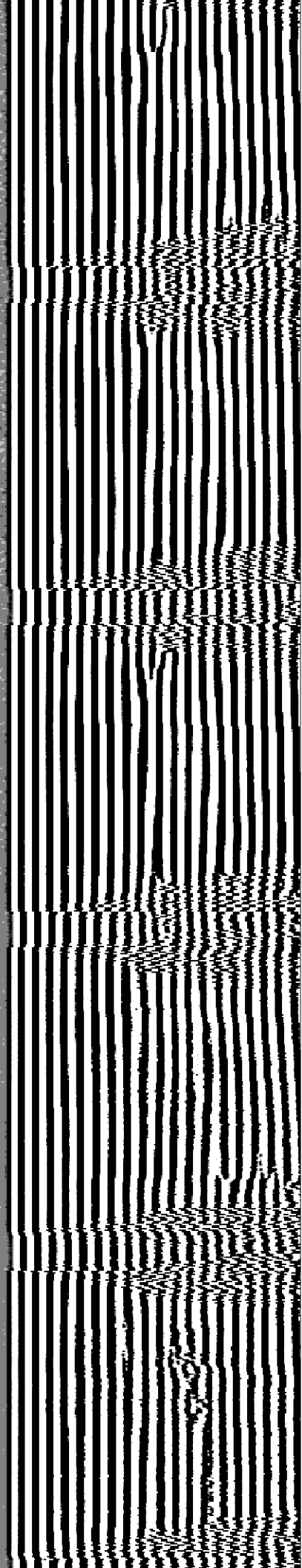
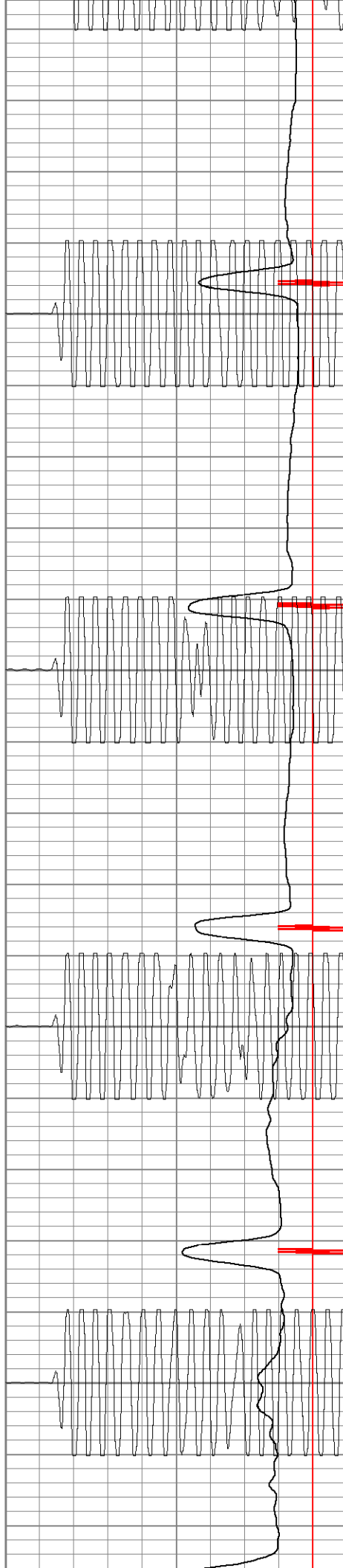


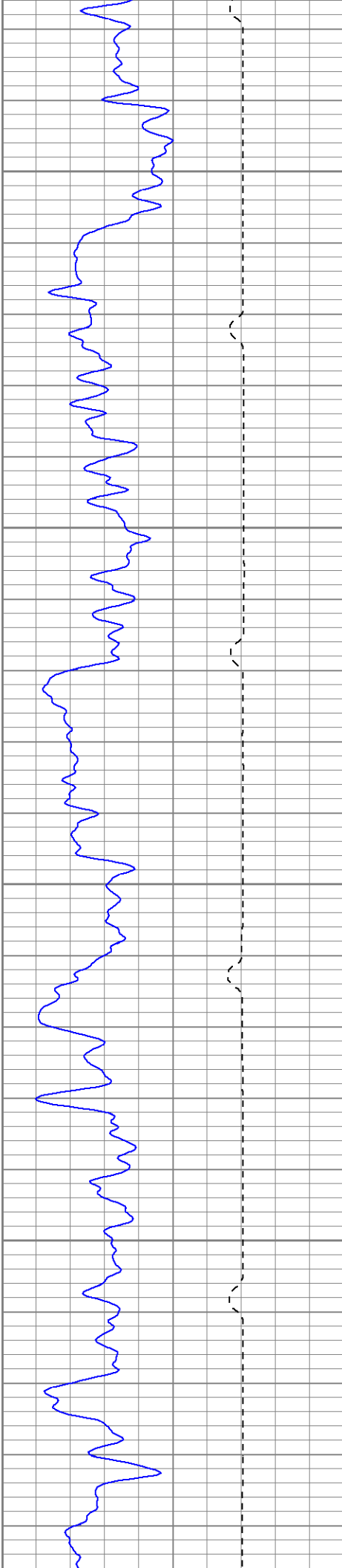
1550

1600

1650

1700



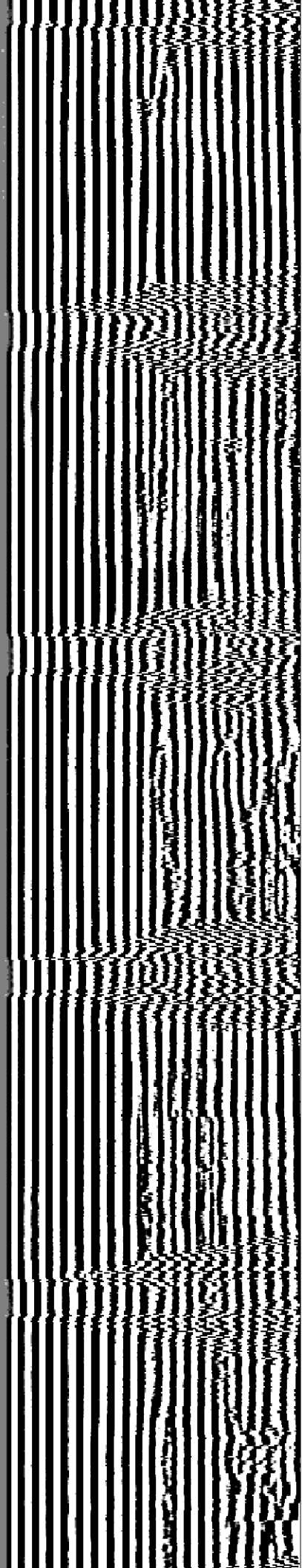
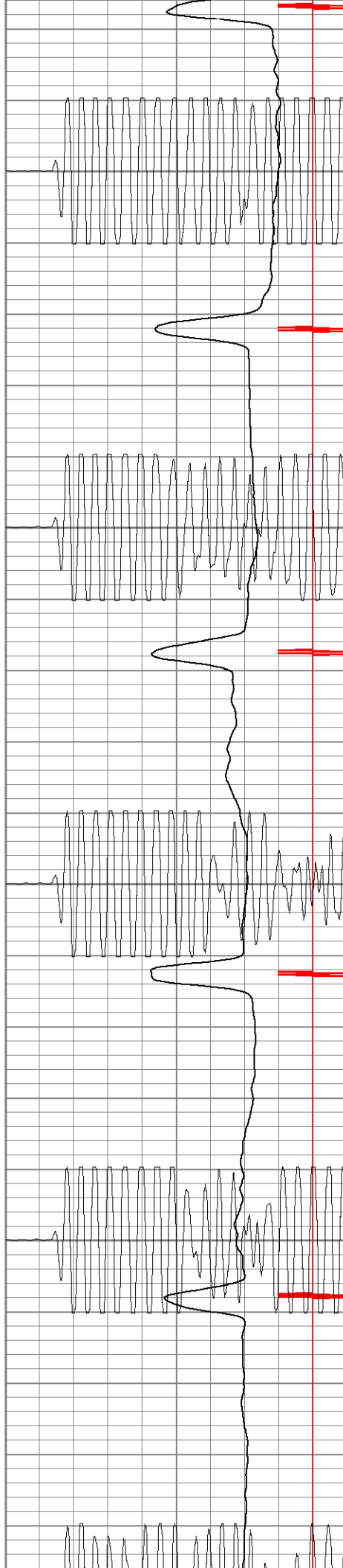


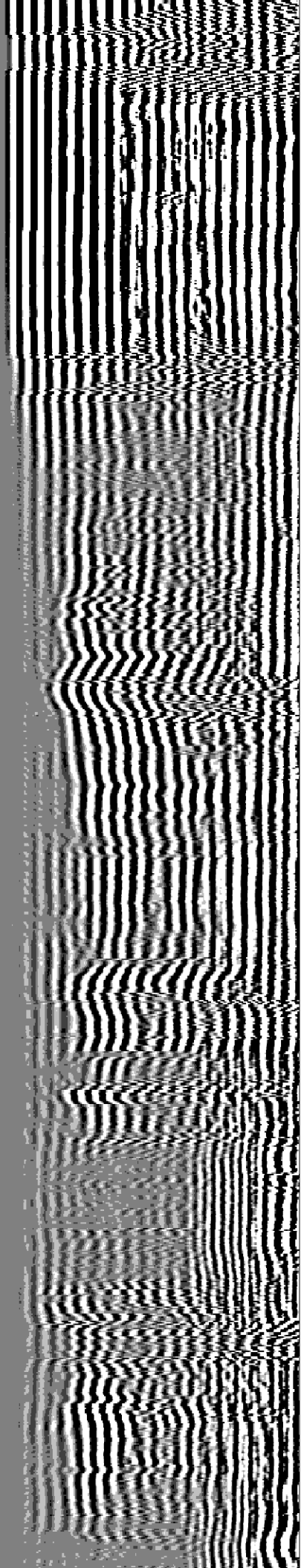
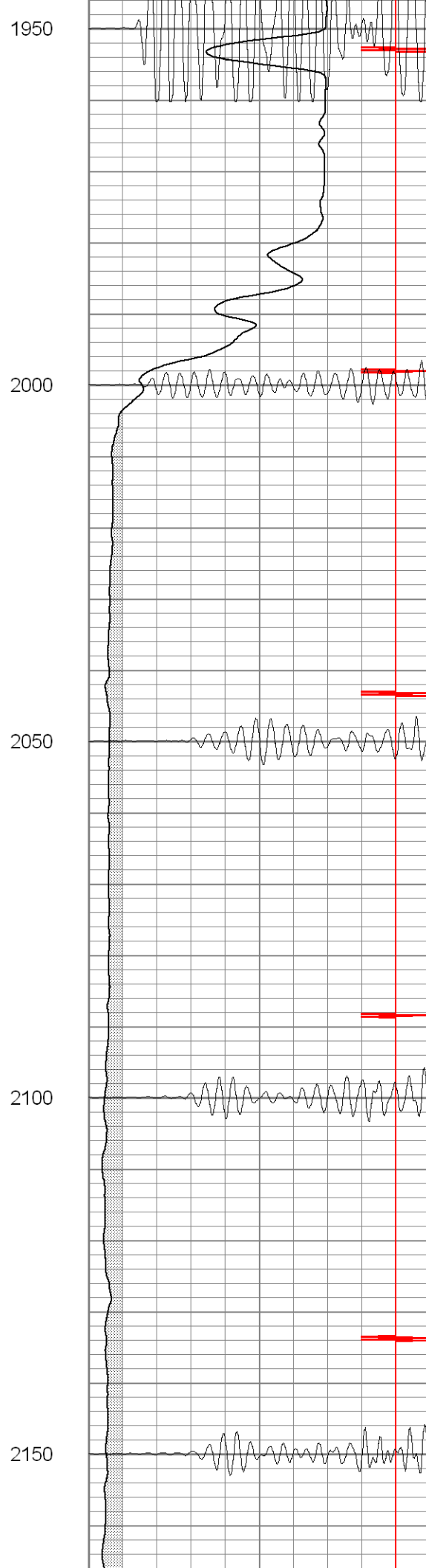
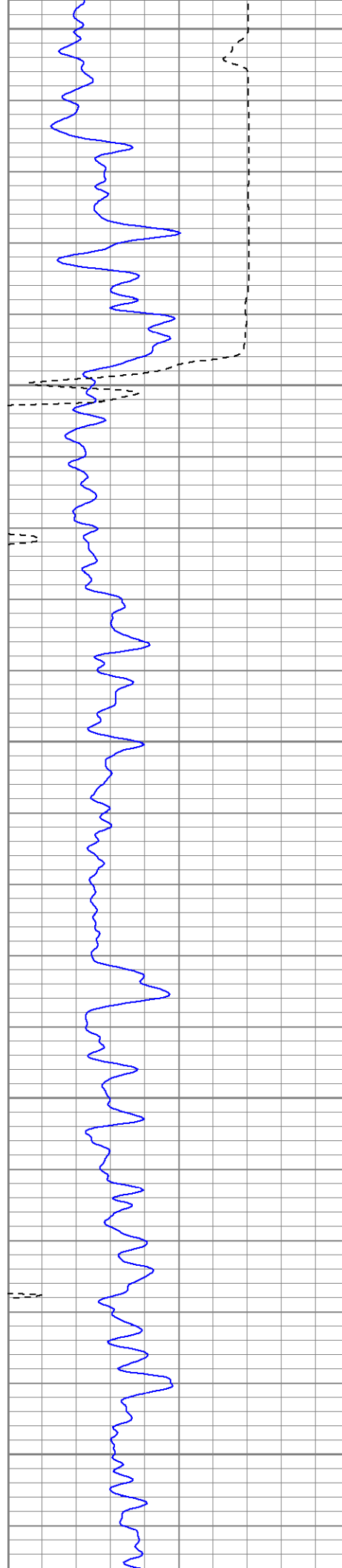
1750

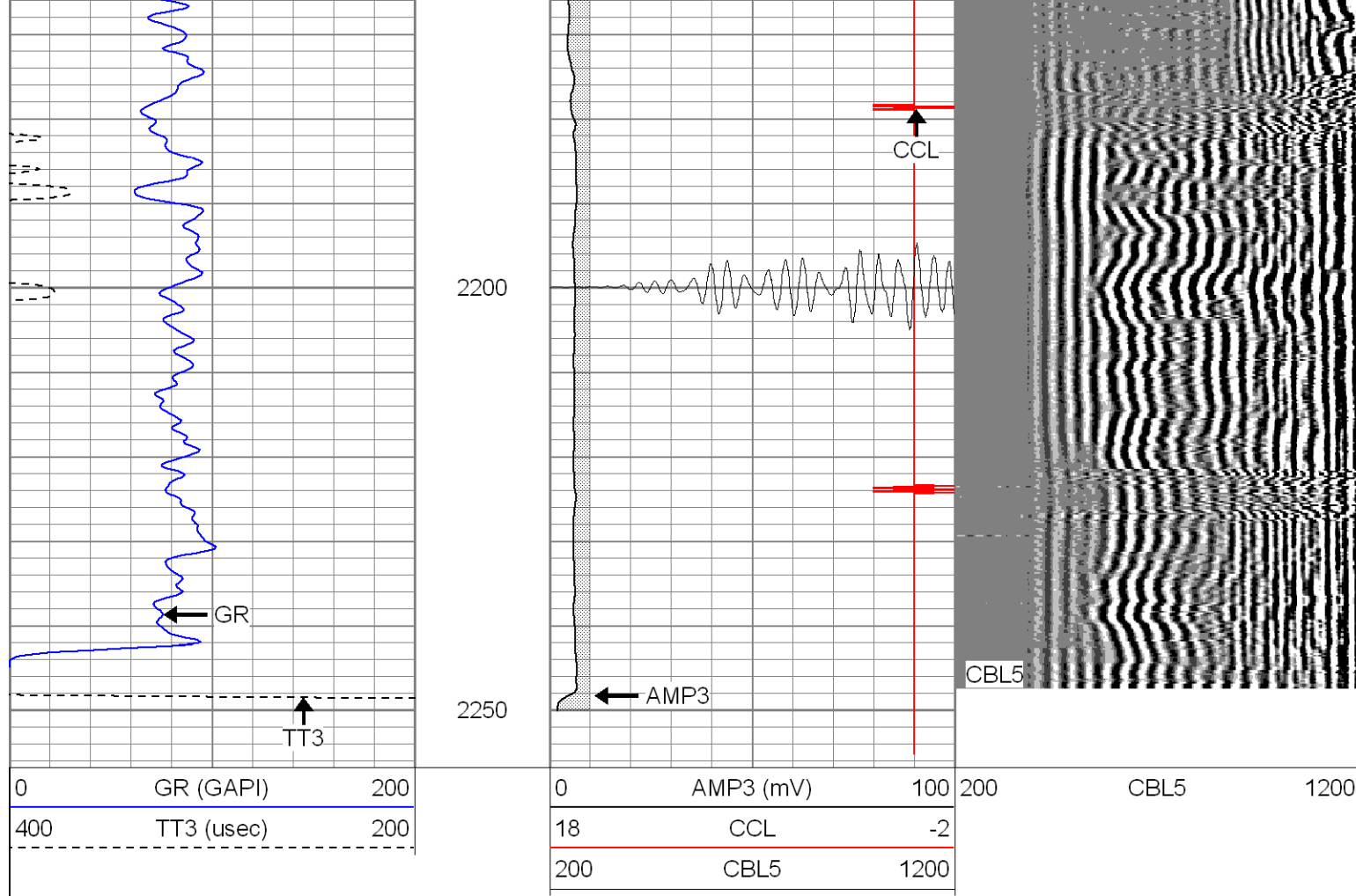
1800

1850

1900





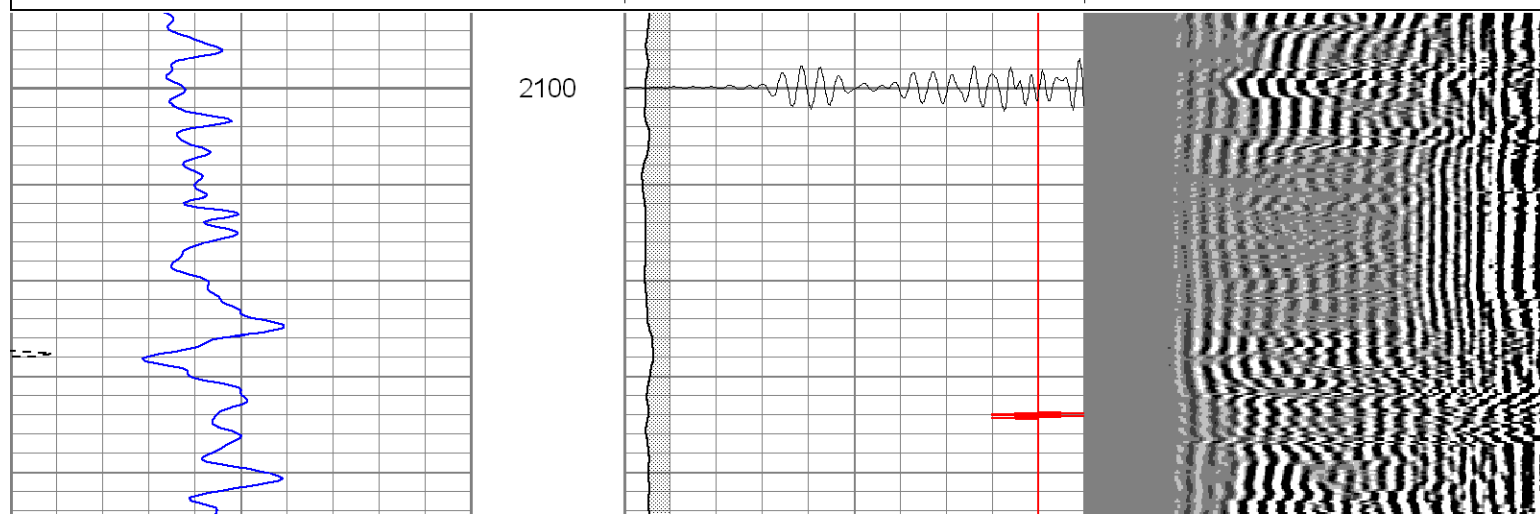
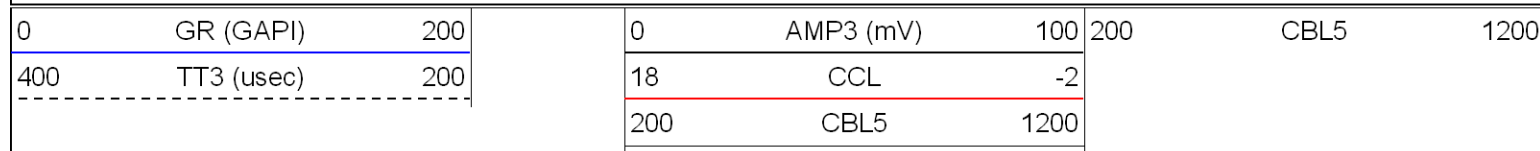


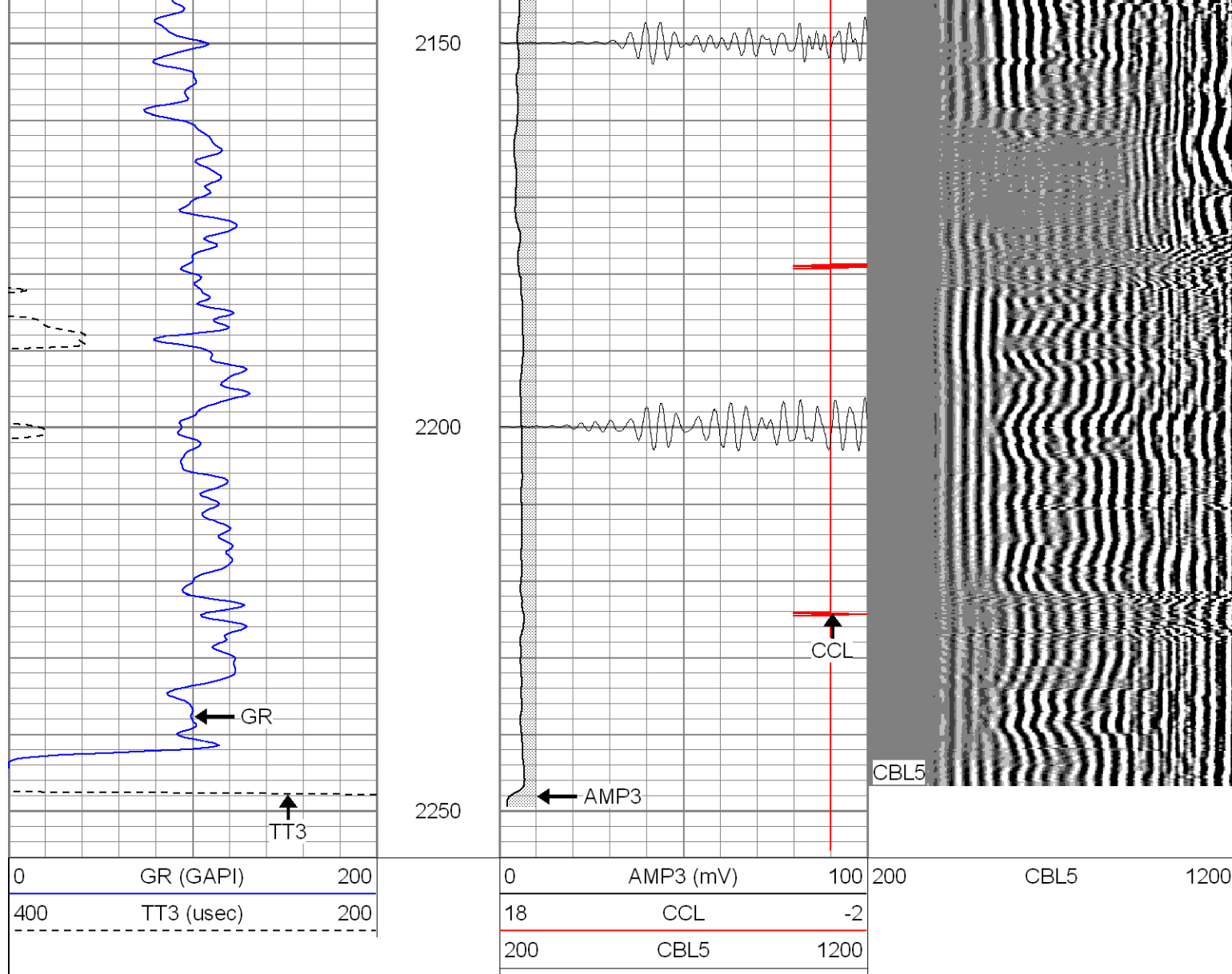
**SUPERIOR**

Black Lick, Pa.  
Mercer, Pa.  
Wooster, Oh.  
Cleveland, Ok.  
Trinidad, Co.

# Repeat Section 0 PSI

Database File: ne25-02b4208.db  
Dataset Pathname: pass1  
Presentation Format: cblrt  
Dataset Creation: Wed Apr 02 09:50:52 2008 by Log Open-Cased 071220  
Charted by: Depth in Feet scaled 1:240





### Calibration Report

Database File: ne25-02b4208.db  
 Dataset Pathname: pass1  
 Dataset Creation: Wed Apr 02 09:50:52 2008 by Log Open-Cased 071220

### Cement Bond Log Calibration Report

Serial Number:	Titan5		
Tool Model:	T5		
Performed:	Wed Apr 02 09:24:33 2008		
Depth:	189.22	ft	
Casing Diameter:	5.5	in	
	3' Spacing	5' Spacing	
Signal Zero:	0	0	mV
Calibrated Amplitude:	85	85	mV
Reading at Signal Zero:	-0.04	0.0081543	V
Reading in Free Pipe:	1.54	2.44	V
Gain:	53.7975	34.9529	
Offset:	2.1519	-0.285016	

### Gamma Ray Calibration Report

Serial Number: Titan5



Serial Number:	Titanis
Tool Model:	T2
Performed:	Wed Apr 02 09:24:44 2008

Calibrator Value:	1.0	GAPI
-------------------	-----	------

Background Reading:	0.0	cps
Calibrator Reading:	1.0	cps

Sensitivity:	1.1500	GAPI/cps
--------------	--------	----------