



**SUPERIOR**  
Black Lick, Pa.  
Mercer, Pa.  
Wooster, Oh.  
Cleveland, Ok.  
Trinidad, Co.

## DUAL INDUCTION LOG

Company XTO Energy Inc.  
Well Golden Eagle 19-13  
Field Purgatoire River  
County Las Animas State Colorado

Location: API # : 05 071 09479 00

586' FSL & 1243' FWL

SEC 19 TWP 33S RGE 67W

Permanent Datum Ground Level Elevation 7779'  
Log Measured From Ground Level  
Drilling Measured From Ground Level

Other Services  
CDL  
NEUTRON  
Elevation  
K.B. -----  
D.F. -----  
G.L. 7779'

Date 3-25-08

Run Number One

Depth Driller 2400'

Depth Logger 2404'

Bottom Logged Interval 2402'

Top Log Interval Surface Casing

Casing Driller 8 5/8" @ 767'

Casing Logger 767'

Bit Size 7 7/8"

Type Fluid in Hole Water

Density / Viscosity ///

pH / Fluid Loss ///

Source of Sample ///

Rm @ Meas. Temp ///

Rmf @ Meas. Temp ///

Rmc @ Meas. Temp ///

Source of Rmf / Rmc ///

Rm @ BHT ///

Time Circulation Stopped 2:00 A.M.

Time Logger on Bottom 4:30 A.M.

Maximum Recorded Temperature 102 DEG F

Equipment Number T697

Location Trinidad

Recorded By J. Cappellucci

Witnessed By Mr. Dalton King

<<< Fold Here >>>

All interpretations are opinions based on inferences from electrical or other measurements and we cannot and do not guarantee the accuracy or correctness of any interpretation, and we shall not, except in the case of gross or willful negligence on our part, be liable or responsible for any loss, costs, damages, or expenses incurred or sustained by anyone resulting from any interpretation made by any of our officers, agents or employees. These interpretations are also subject to our general terms and conditions set out in our current Price Schedule.

### Comments

#### Well Directions:

Second Bosque Entrance, straight across railroad tracks, at Y stay left to Apache canyon, take first right past windmill, follow up the hill, through one location, at fork stay left, take first hard right up hill, drive through one location, stay to right, follow road to location.



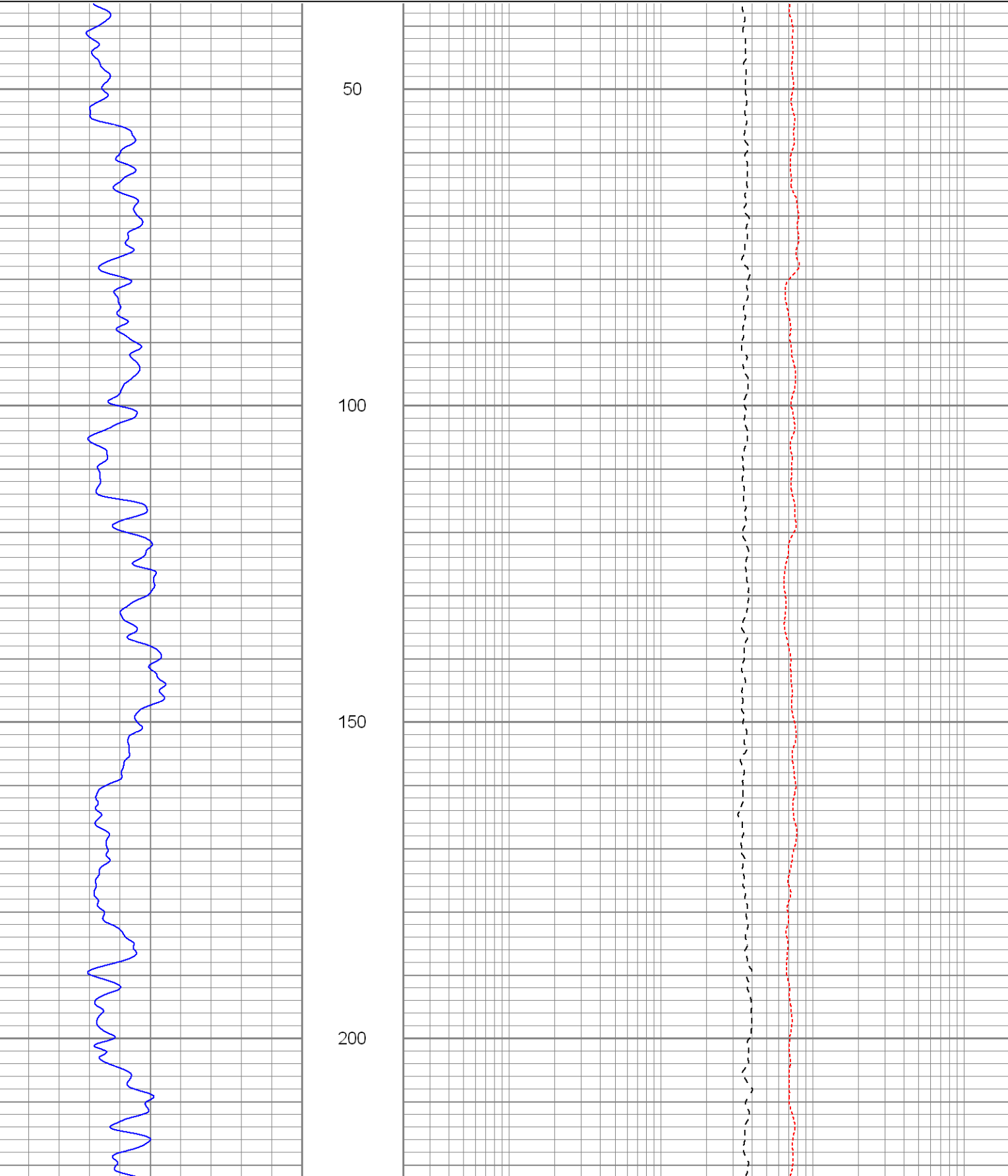
**SUPERIOR**  
Black Lick, Pa.  
Mercer, Pa.  
Wooster, Oh.  
Cleveland, Ok.  
Trinidad, Co.

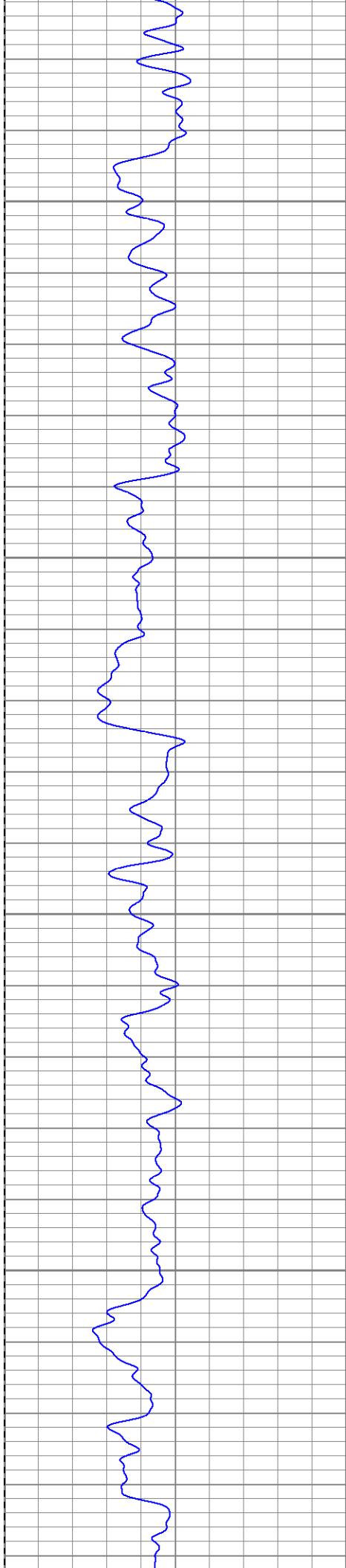
# Main Pass

Database File: xtoge1913.db  
Dataset Pathname: pass2.1  
Presentation Format: dil  
Dataset Creation: Tue Mar 25 06:11:16 2008 by Calc Open-Cased 070814  
Charted by: Depth in Feet scaled 1:240

0	GR (GAPI)	200
-200	SP (mV)	0

0.2	RILM (Ohm-m)	2000
0.2	RILD (Ohm-m)	2000
0.2	RLL3 (Ohm-m)	2000



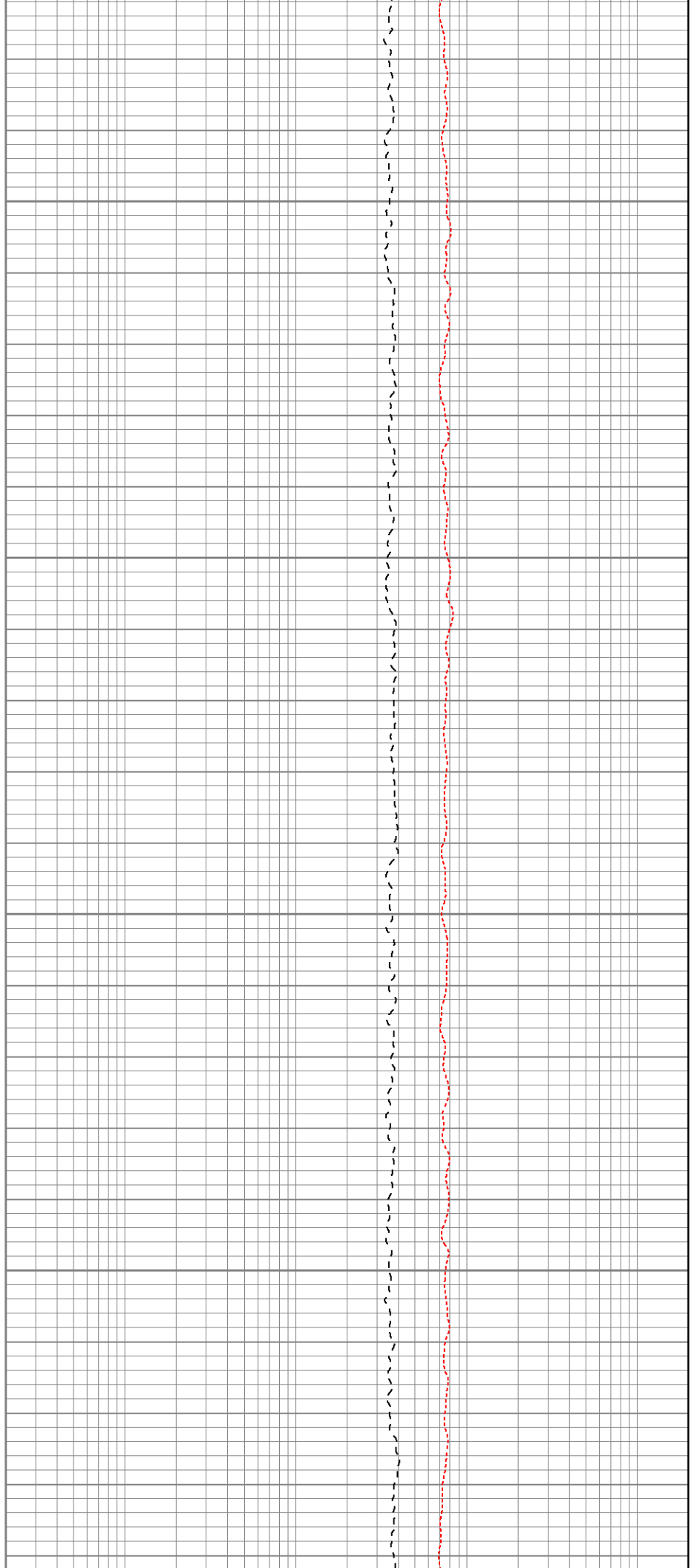


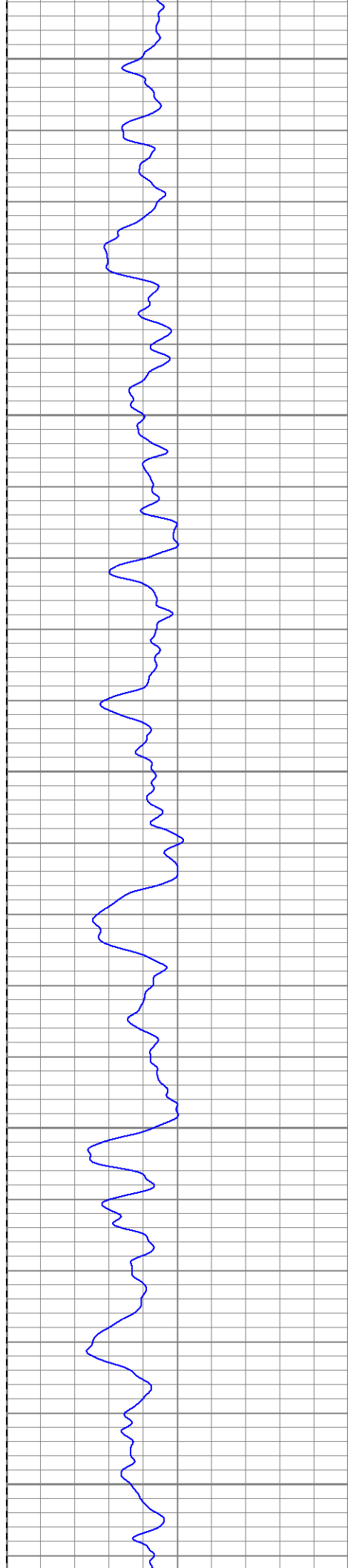
250

300

350

400





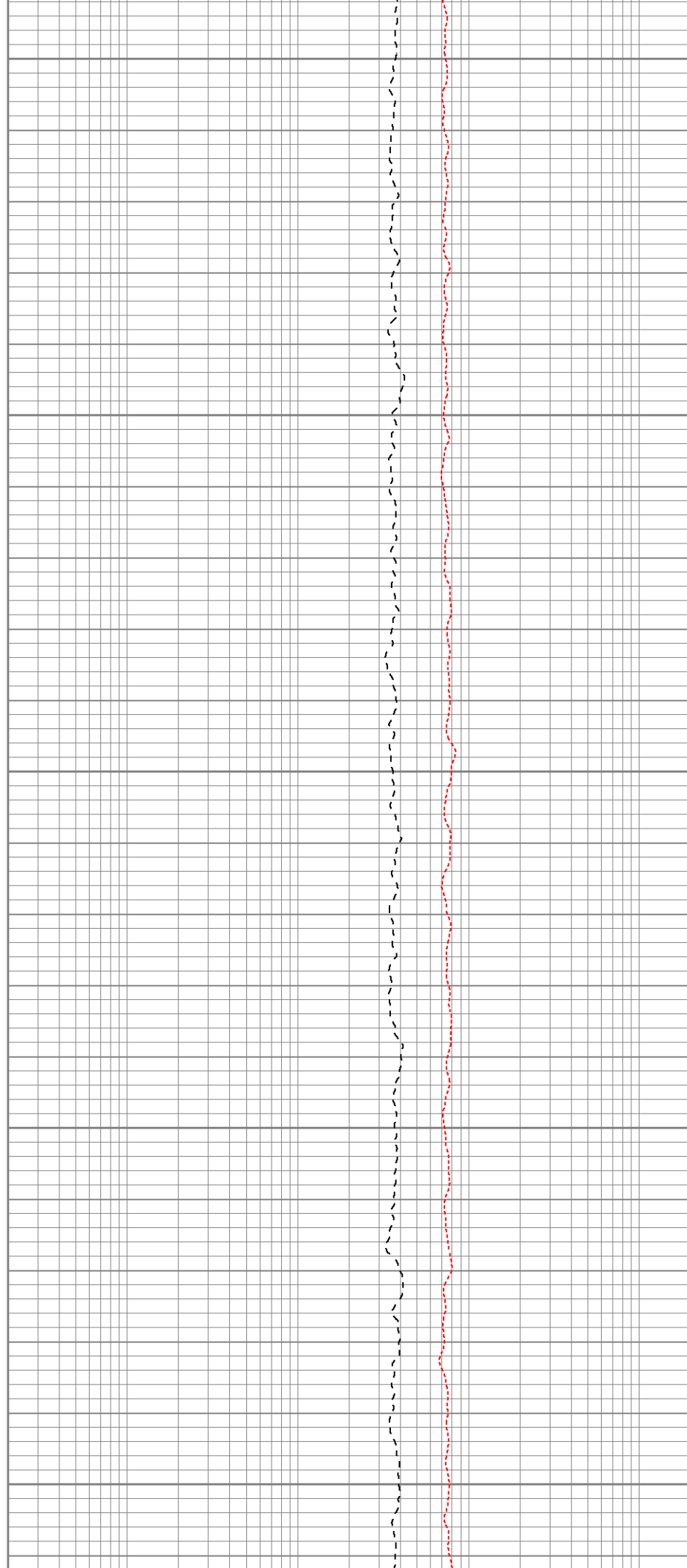
450

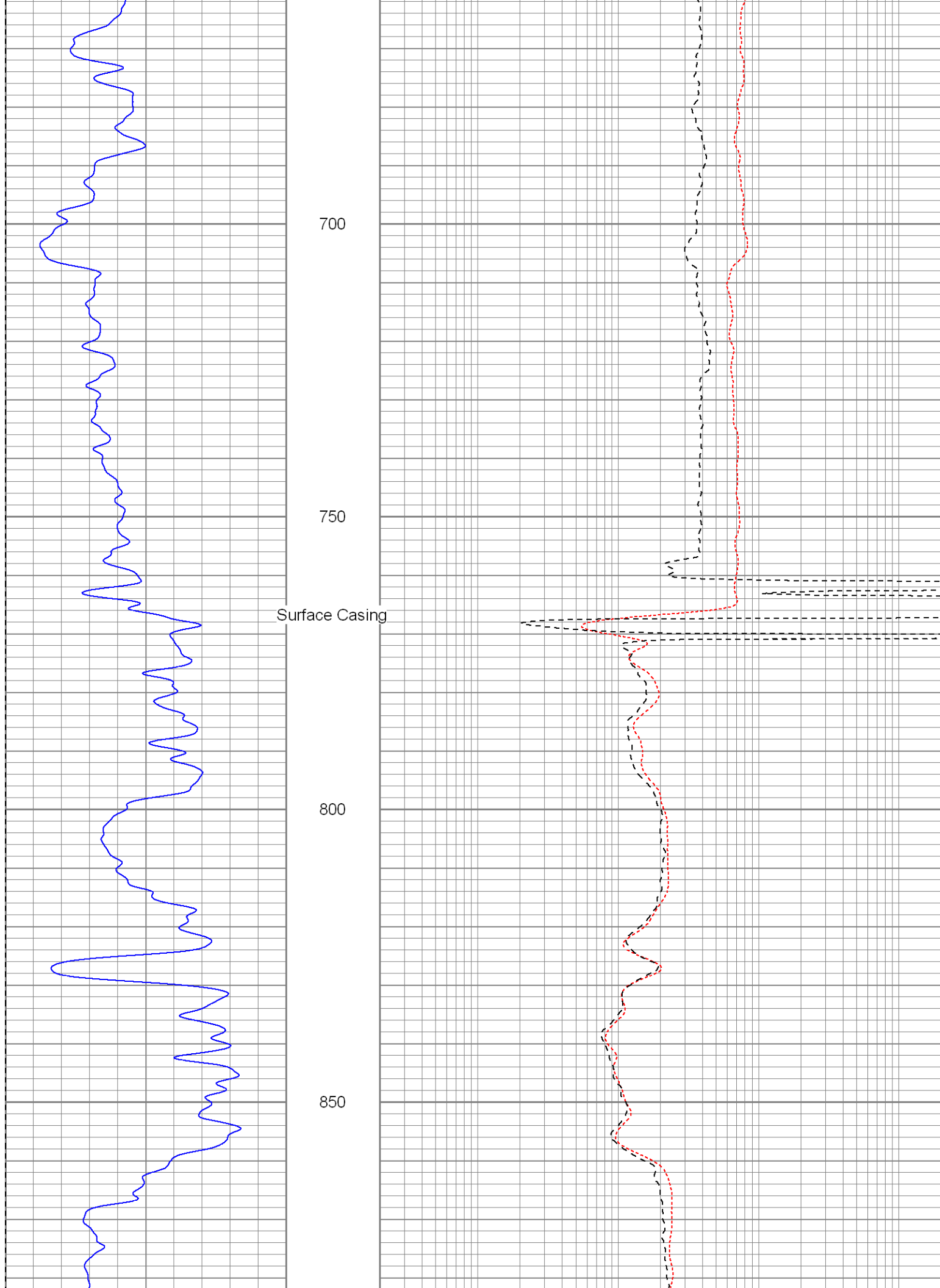
500

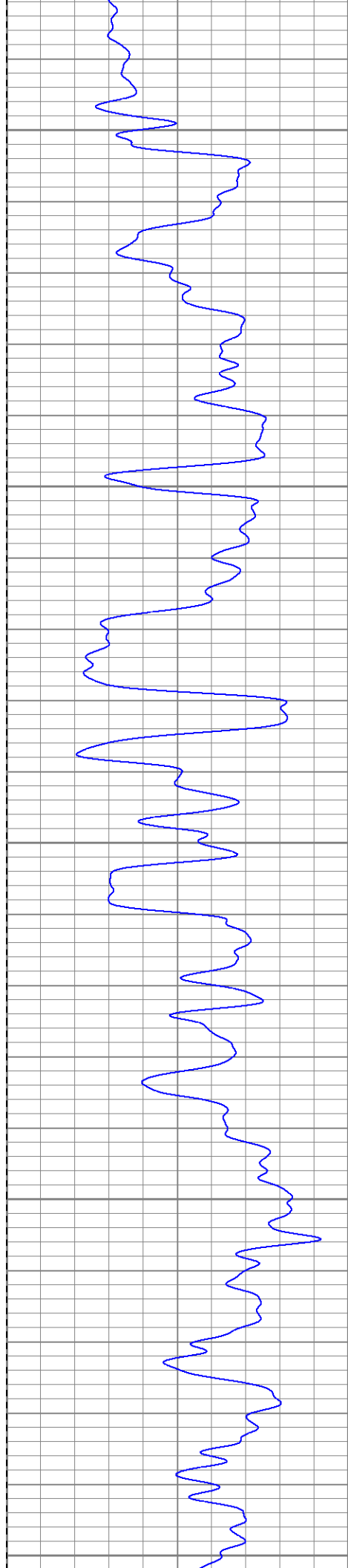
550

600

650







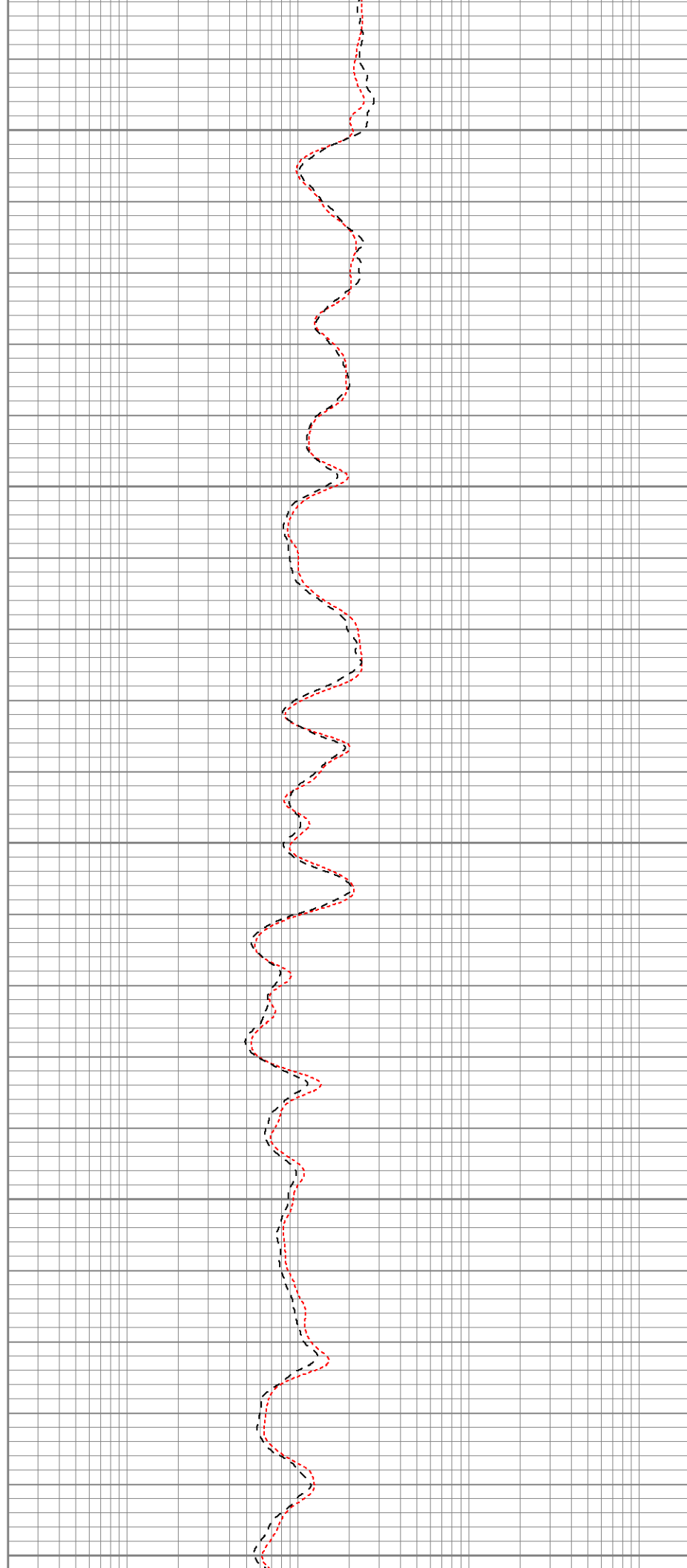
900

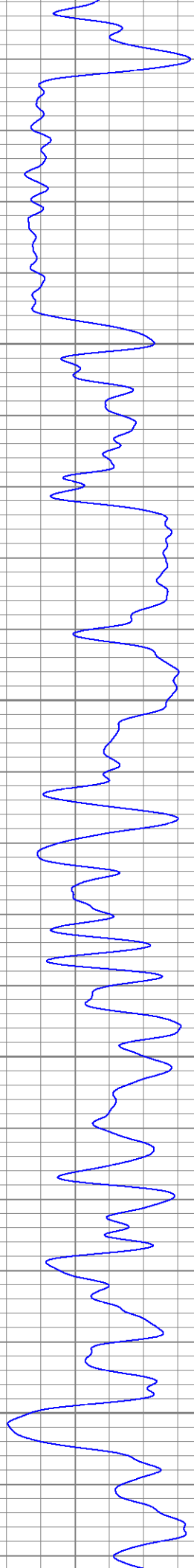
950

1000

1050

1100



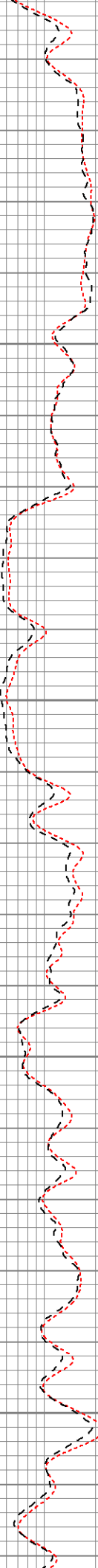


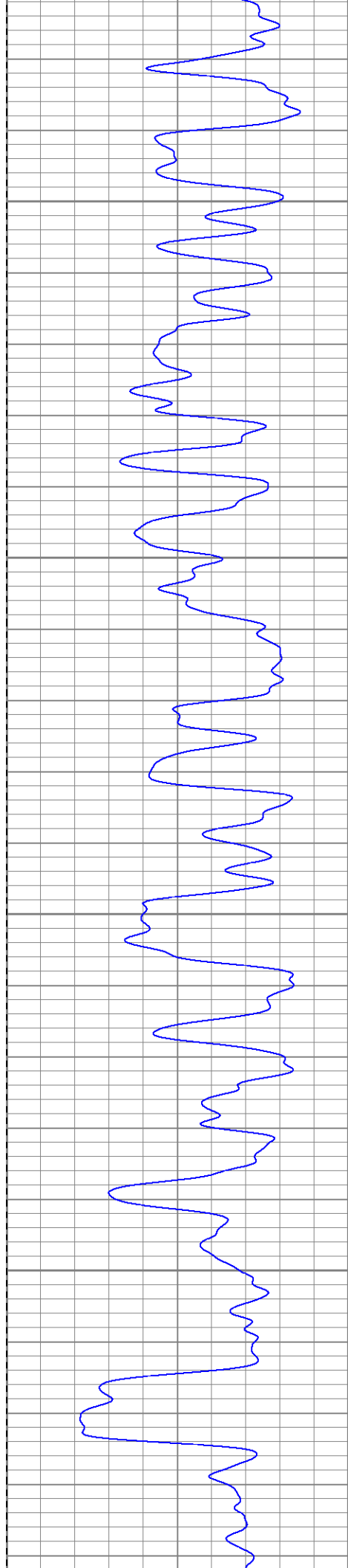
1150

1200

1250

1300



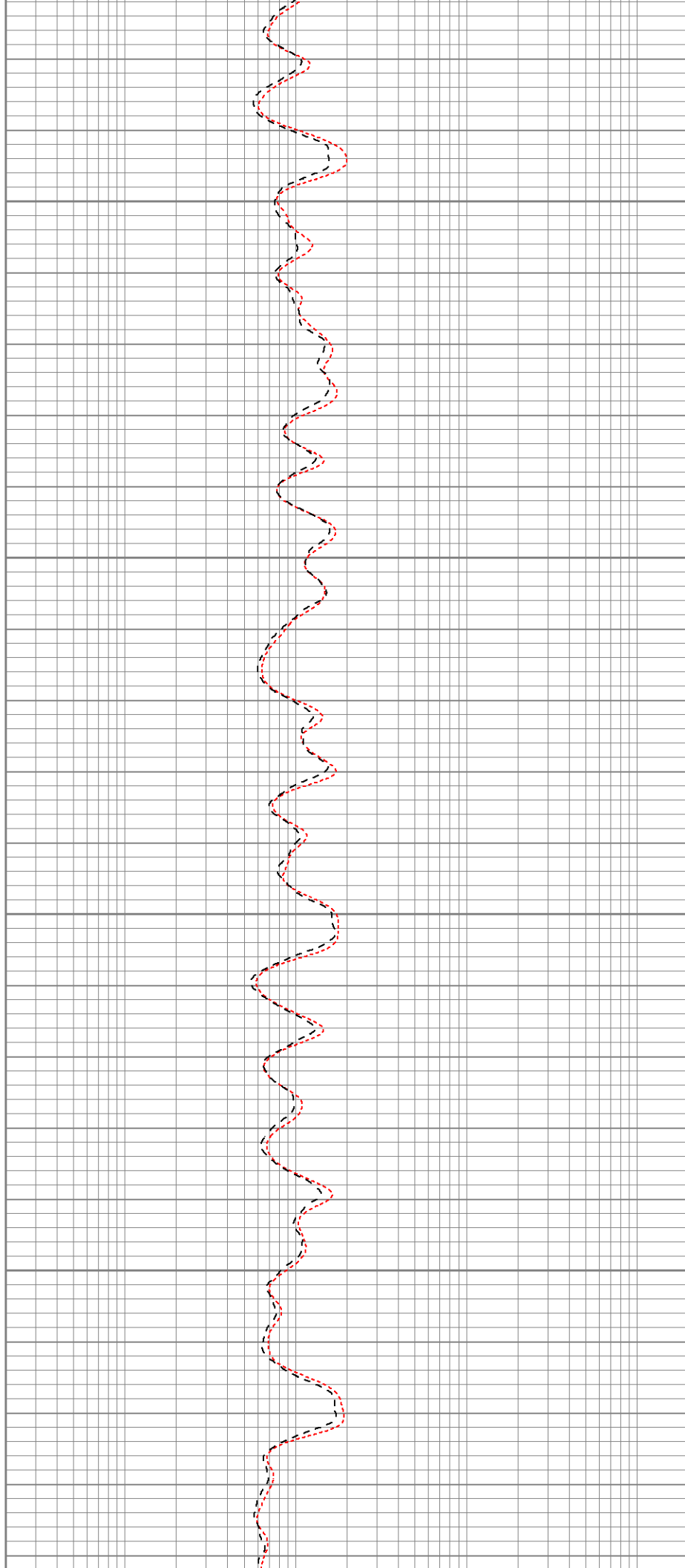


1350

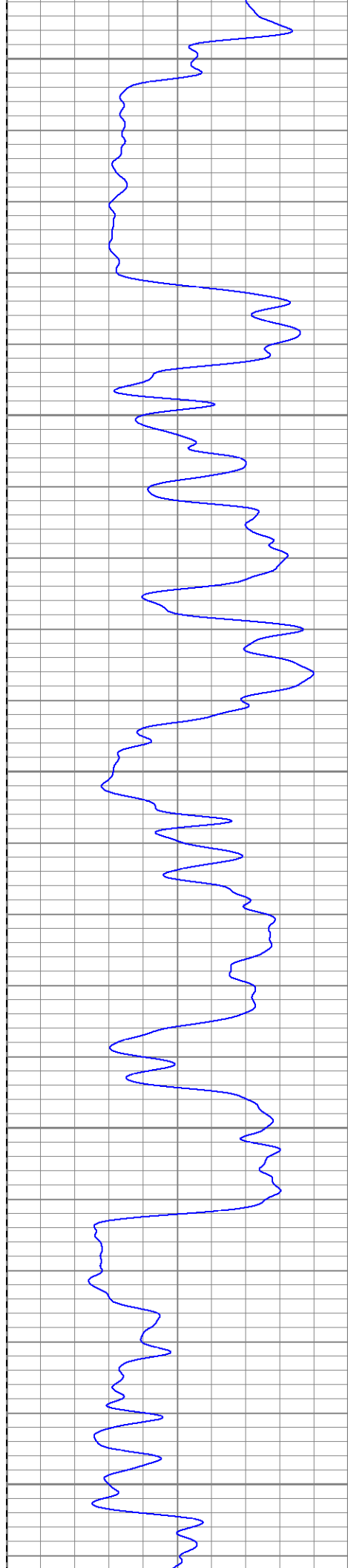
1400

1450

1500







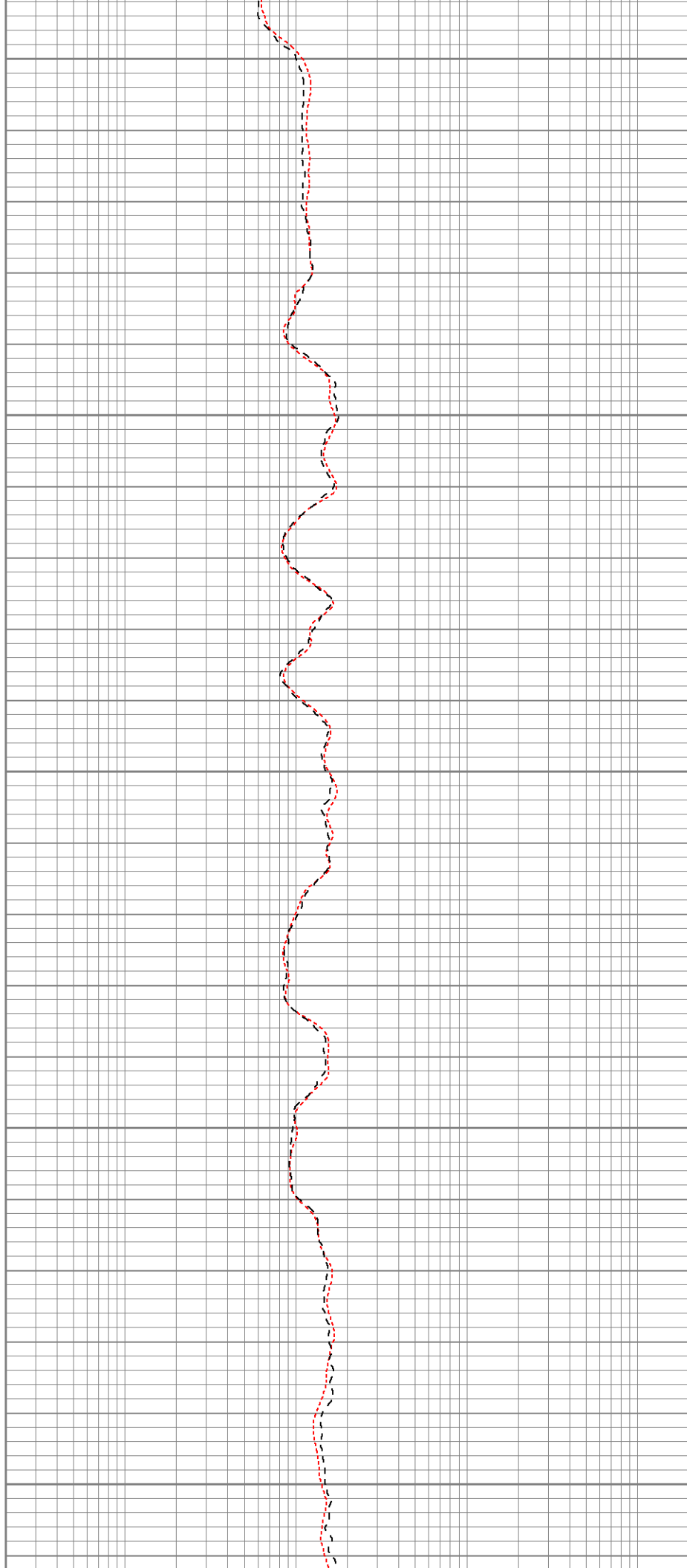
1550

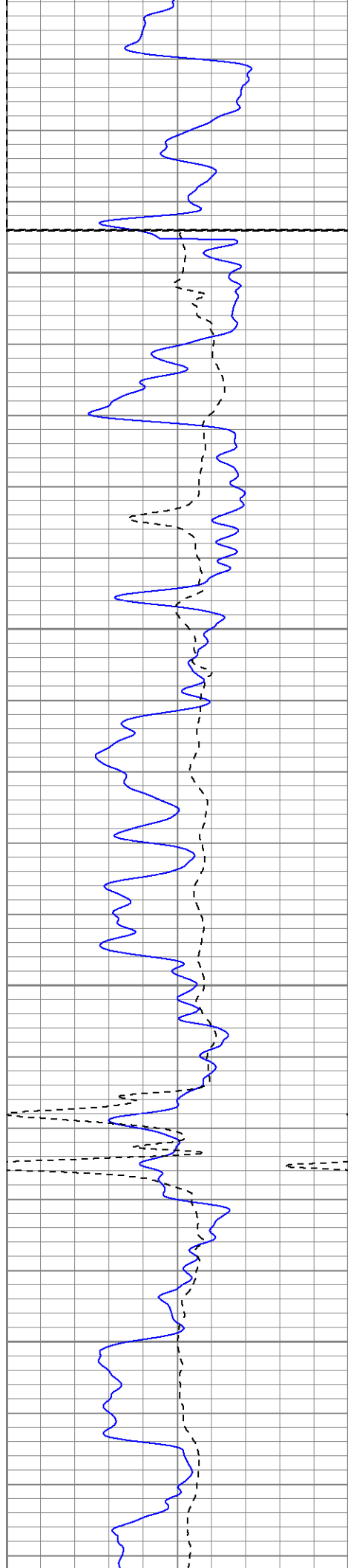
1600

1650

1700

1750





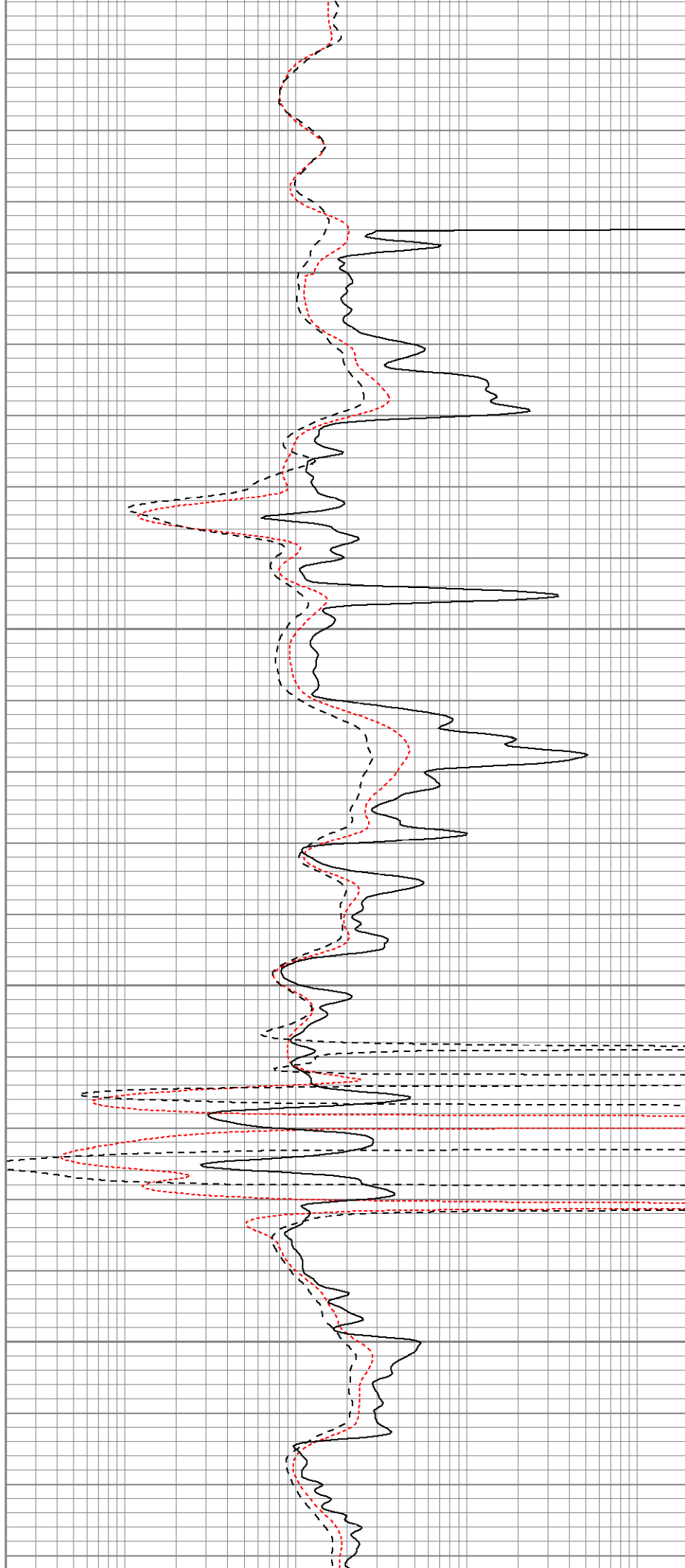
Fluid Level

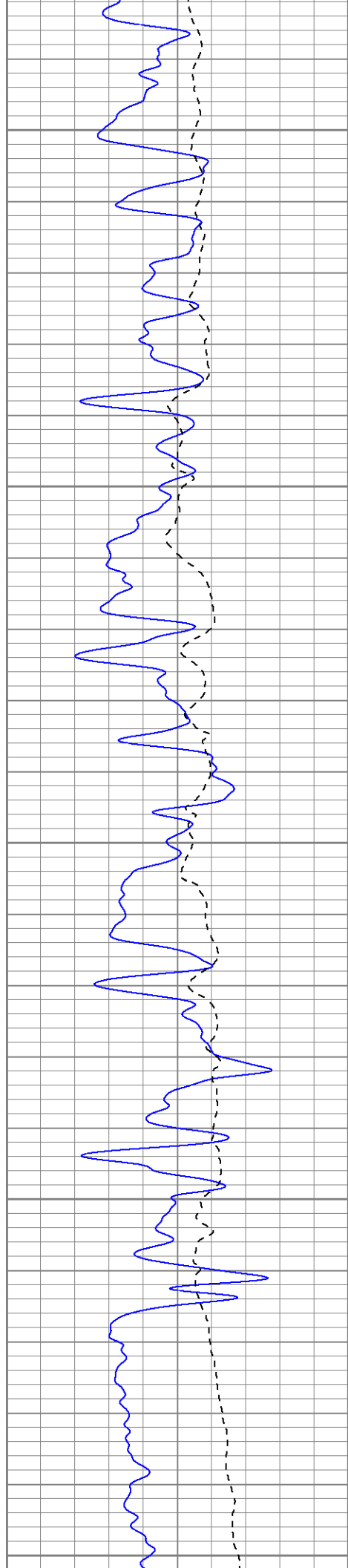
1800

1850

1900

1950





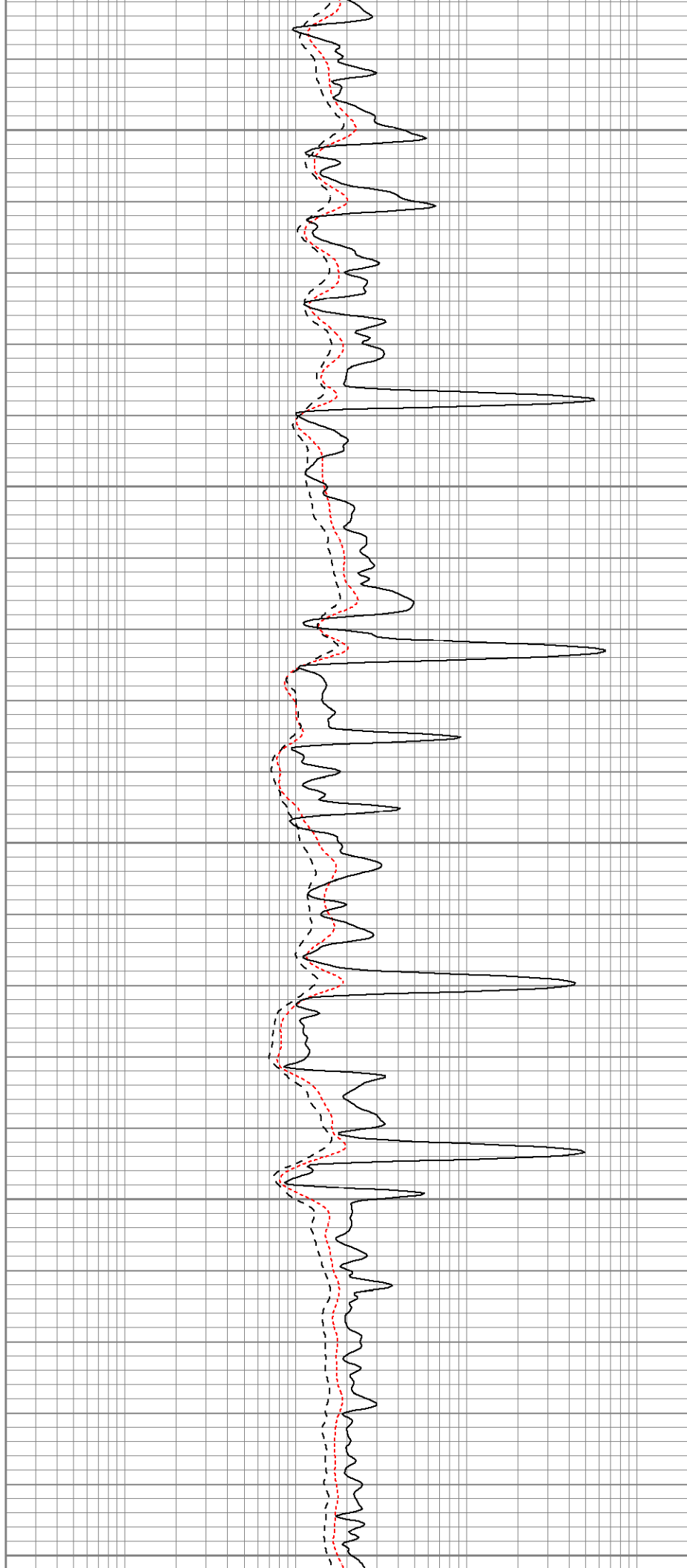
2000

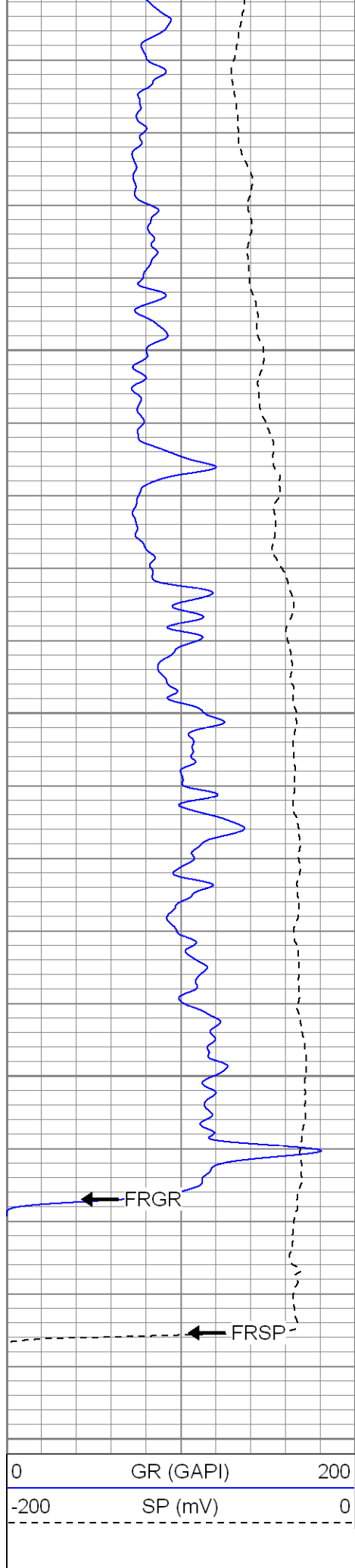
2050

2100

2150

2200



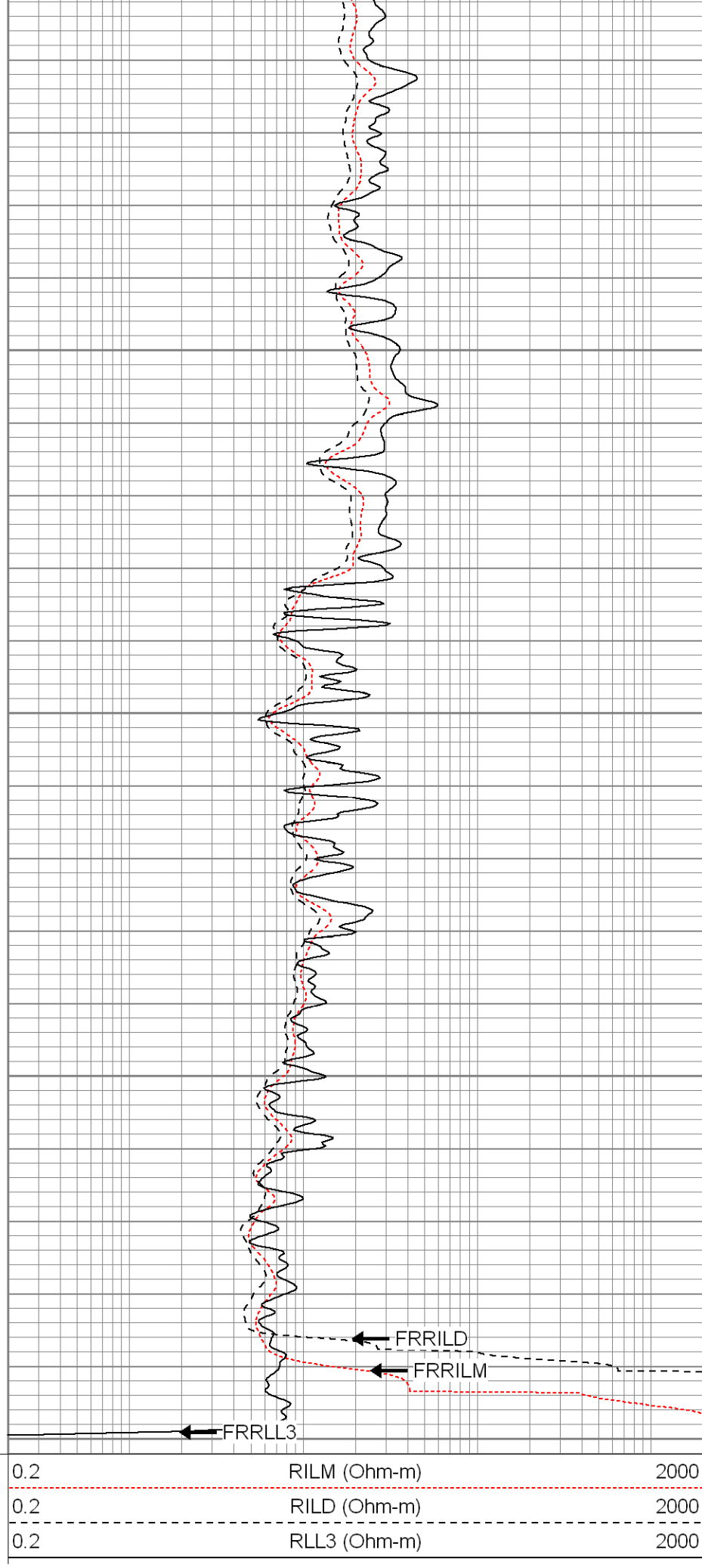


2250

2300

2350

2400





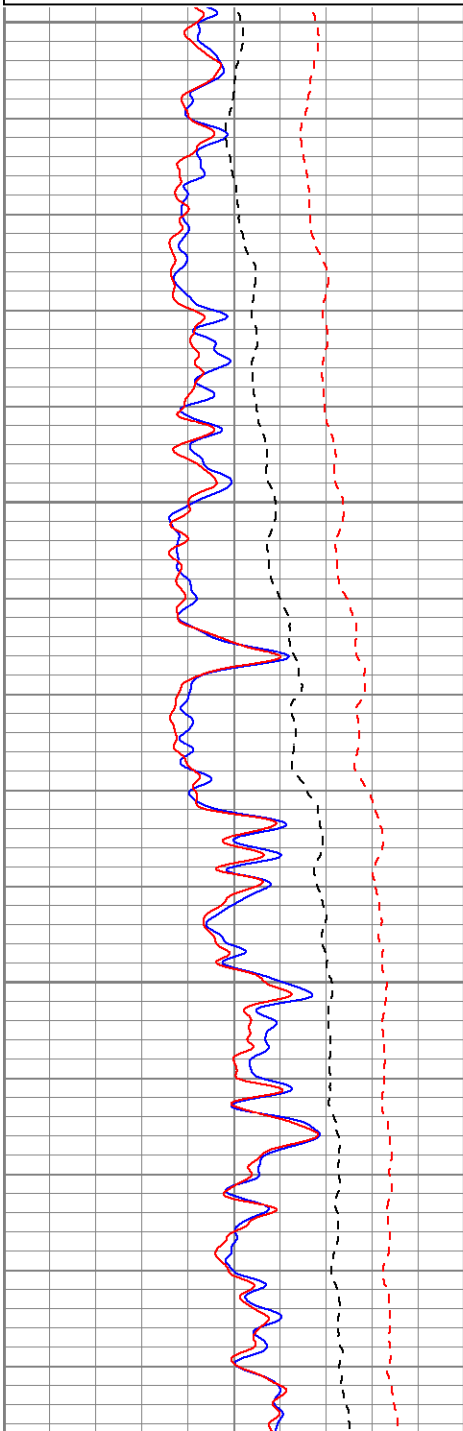
SUPERIOR  
Black Lick, Pa.  
Mercer, Pa.  
Wooster, Oh.  
Cleveland, Ok.  
Trinidad, Co.

# Repeat Pass

Database File: xtoge1913.db  
Dataset Pathname: pass1.1  
Presentation Format: dil  
Dataset Creation: Tue Mar 25 05:03:05 2008 by Calc Open-Cased 070814  
Charted by: Depth in Feet scaled 1:240

0	GR (GAPI)	200
-200	SP (mV)	0
0	GR-repeat (GAPI)	200
-200	SP-repeat (mV)	0

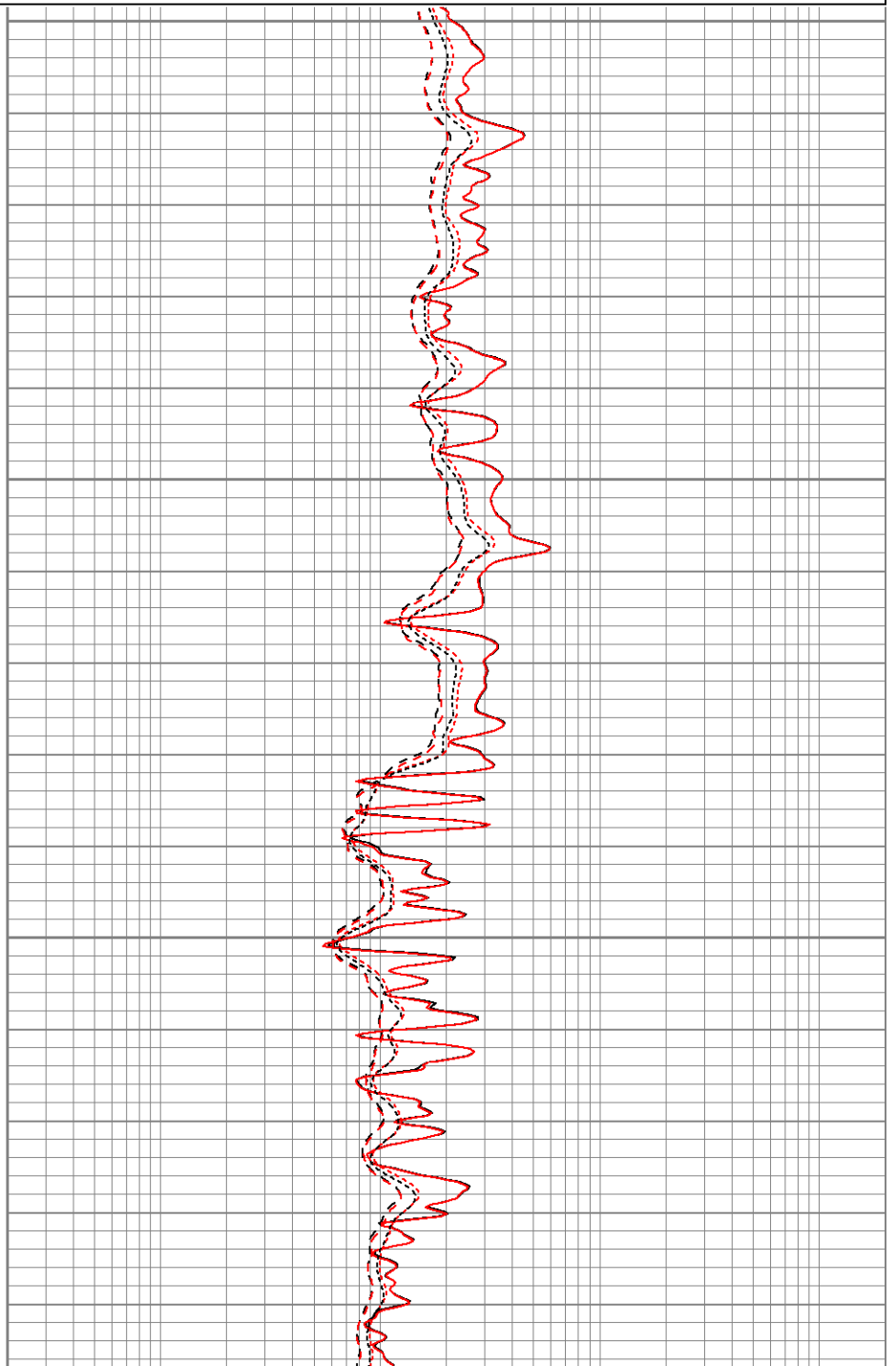
0.2	RILM (Ohm-m)	2000
0.2	RILD (Ohm-m)	2000
0.2	RLL3 (Ohm-m)	2000
0.2	RLL3-repeat (Ohm-m)	2000
0.2	RILM-repeat (Ohm-m)	2000
0.2	RILD-repeat (Ohm-m)	2000



2200

2250

2300





## Master Calibration




	Density			Far Detector	Near Detector	
Magnesium	1.710	g/cc		689.13	662.28	cps
Aluminum	2.590	g/cc		156.84	466.09	cps
Spine Angle = 76.65			Density/Spine Ratio = 0.578			
	Size			Reading		
Small Ring	8.50	in		4.33	V	
Large Ring	14.00	in		8.24	V	

## Gamma Ray Calibration Report

Serial Number: 2001  
 Tool Model: OH  
 Performed: Wed Mar 05 01:30:07 2008  
  
 Calibrator Value: 1.0 GAPI  
  
 Background Reading: 0.0 cps  
 Calibrator Reading: 1.0 cps  
  
 Sensitivity: 0.2500 GAPI/cps

## Neutron Calibration Report

Serial Number: 5145  
 Tool Model: G  
 Performed: Tue Mar 04 08:46:08 2008  
  
 Calibrator Value: 1200 NAPI  
  
 Calibrator Reading: 1700 cps  
  
 Sensitivity: 0.705882 NAPI/cps

Sensor	Offset (ft)	Schematic	Description	Len (ft)	OD (in)	Wt (lb)
NEU	40.47		None	0.75	1.50	5.00
			NEU-G (5145) Gearhart Epithermal	5.65	3.50	85.00
GR	34.63		GR-OH (2001) 2001	3.56	3.25	40.00
LSD DCAL SSD	26.46		CDL-poilex (2118)	8.83	4.00	275.00
	26.05					
	25.88					

CILD SP	16.29 16.29					
CILM	12.54		DIL-P (20017) Pengo	24.63	4.00	300.00
RLL3	3.21					

Dataset:
xtoge1913.db: field/well/run1/pass1

Total Length:
43.42 ft

Total Weight:
705.00 lb

O.D.
4.00 in