



SUPERIOR
Black Lick, Pa.
Mercer, Pa.
Wooster, Oh.
Cleveland, Ok.
Trinidad, Co.

DUAL INDUCTION LOG

Company XTO Energy Inc.
Well New Elk 25-02
Field Purgatoire River
County Las Animas State Colorado

Location: API # : 05 071 09474 00

475' FNL & 1931' FEL

SEC 25 TWP 33S RGE 68W

Permanent Datum Ground Level Elevation 7790'
Log Measured From Ground Level
Drilling Measured From Ground Level

Other Services
CDL
NEUTRON
Elevation
K.B. -----
D.F. -----
G.L. 7790'

Date 3-18-08

Run Number One

Depth Driller 2350'

Depth Logger 2347'

Bottom Logged Interval 2345'

Top Log Interval Surface Casing

Casing Driller 8 5/8" @ 586'

Casing Logger 586'

Bit Size 7 7/8"

Type Fluid in Hole Water

Density / Viscosity ///

pH / Fluid Loss ///

Source of Sample ///

Rm @ Meas. Temp ///

Rmf @ Meas. Temp ///

Rmc @ Meas. Temp ///

Source of Rmf / Rmc ///

Rm @ BHT ///

Time Circulation Stopped 11:30 A.M.

Time Logger on Bottom 2:15 P.M.

Maximum Recorded Temperature 112 DEG F

Equipment Number T697

Location Trinidad

Recorded By J. Cappellucci

Witnessed By Mr. Don Johnson

<<< Fold Here >>>

All interpretations are opinions based on inferences from electrical or other measurements and we cannot and do not guarantee the accuracy or correctness of any interpretation, and we shall not, except in the case of gross or willful negligence on our part, be liable or responsible for any loss, costs, damages, or expenses incurred or sustained by anyone resulting from any interpretation made by any of our officers, agents or employees. These interpretations are also subject to our general terms and conditions set out in our current Price Schedule.

Comments

Well Directions:

Second Bosque Entrance, straight across railroad tracks, at Y stay left to Apache canyon, take first right past windmill, follow up the hill, through one location, at fork stay right to location.

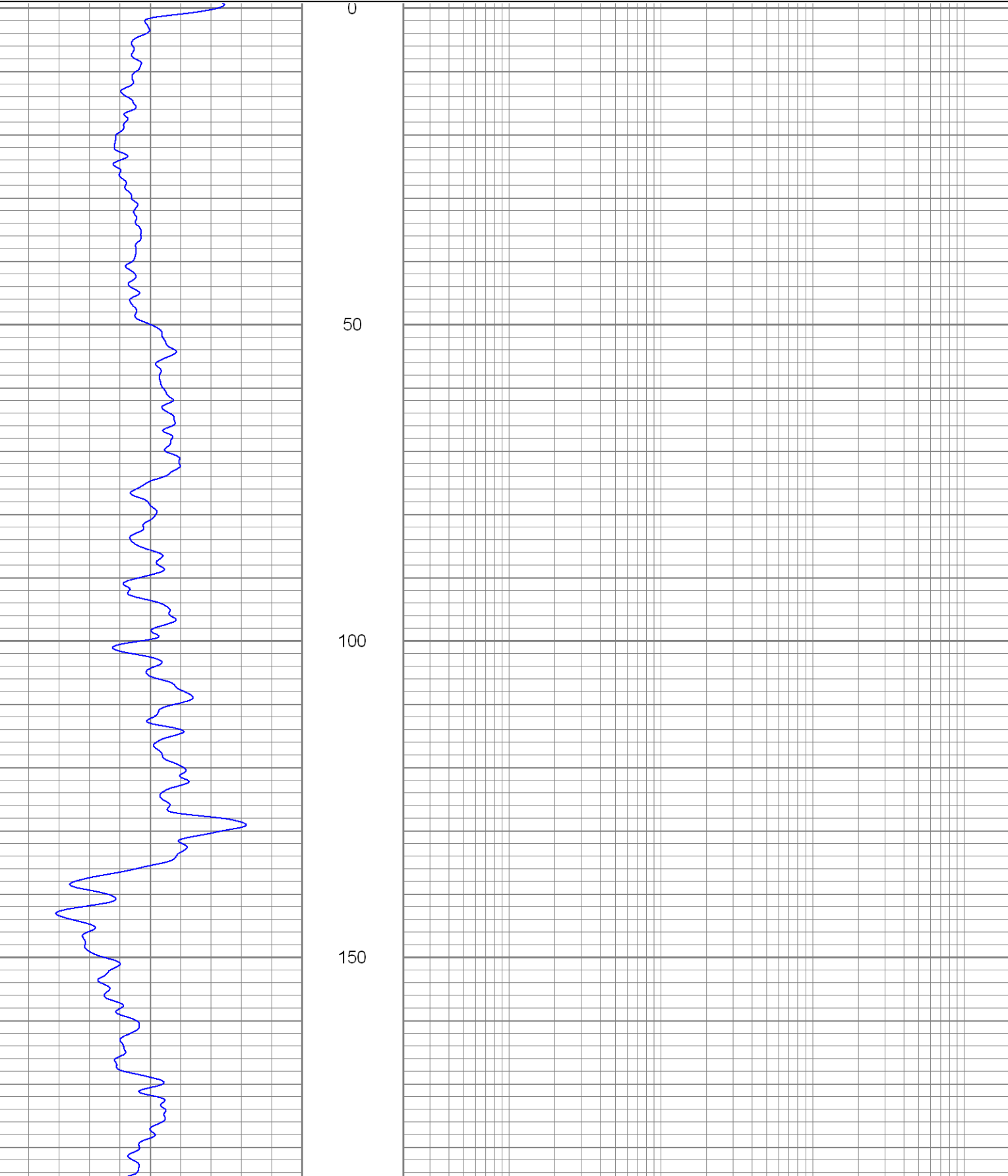


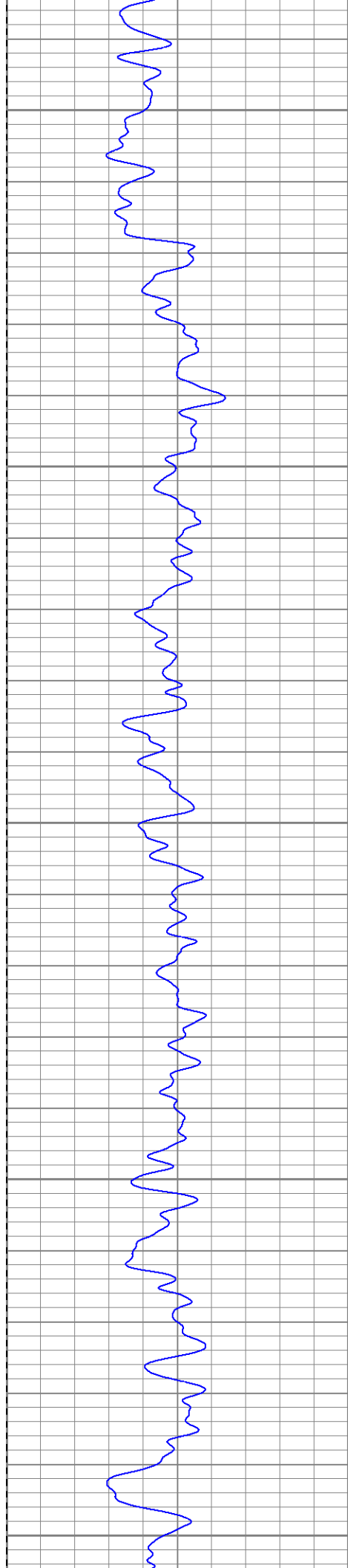
SUPERIOR
Black Lick, Pa.
Mercer, Pa.
Wooster, Oh.
Cleveland, Ok.
Trinidad, Co.

Main Pass

Database File: xtone2502.db
Dataset Pathname: pass2.2
Presentation Format: dil
Dataset Creation: Tue Mar 18 16:54:33 2008
Charted by: Depth in Feet scaled 1:240

0	GR (GAPI)	200	0.2	RILM (Ohm-m)	2000
-200	SP (mV)	0	0.2	RILD (Ohm-m)	2000
			0.2	RLL3 (Ohm-m)	2000





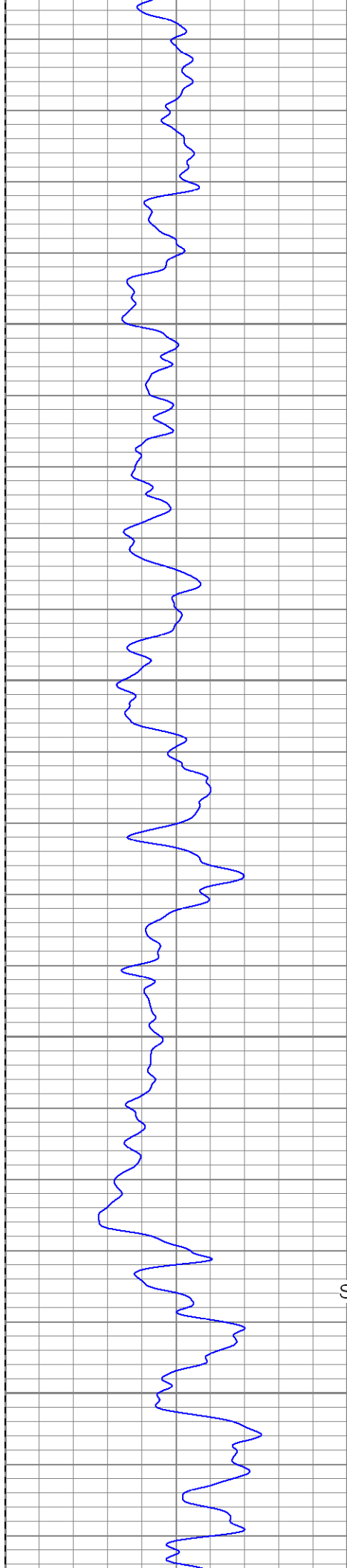
200

250

300

350

400



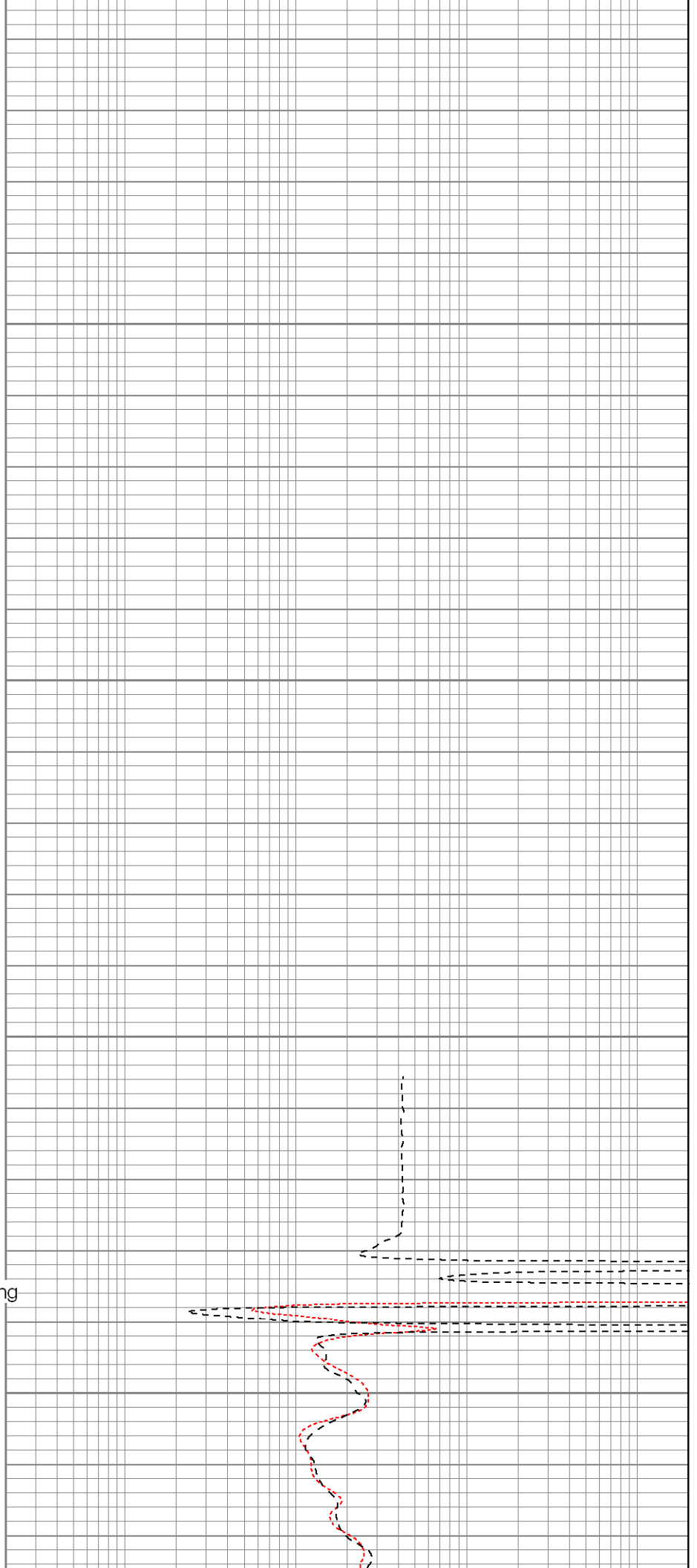
450

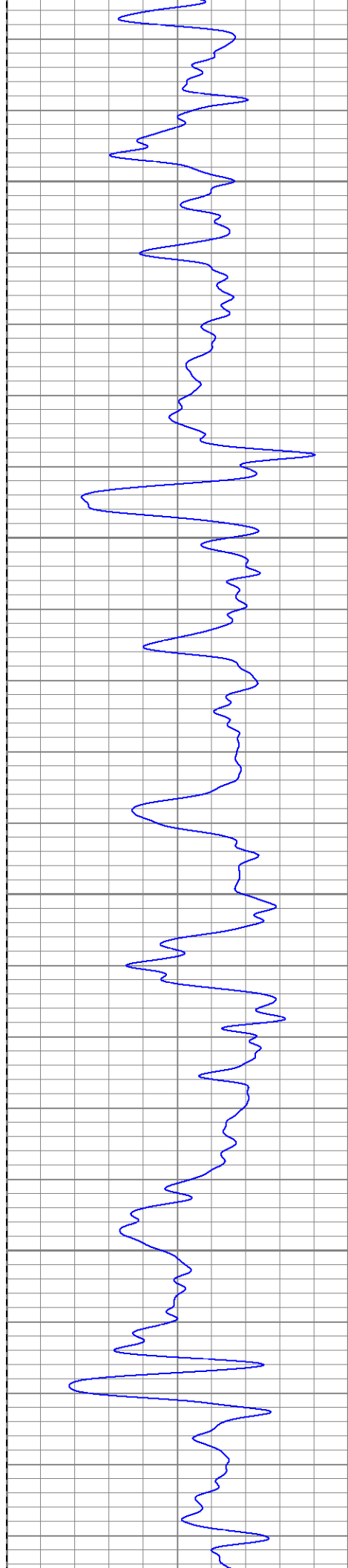
500

550

Surface Casing

600



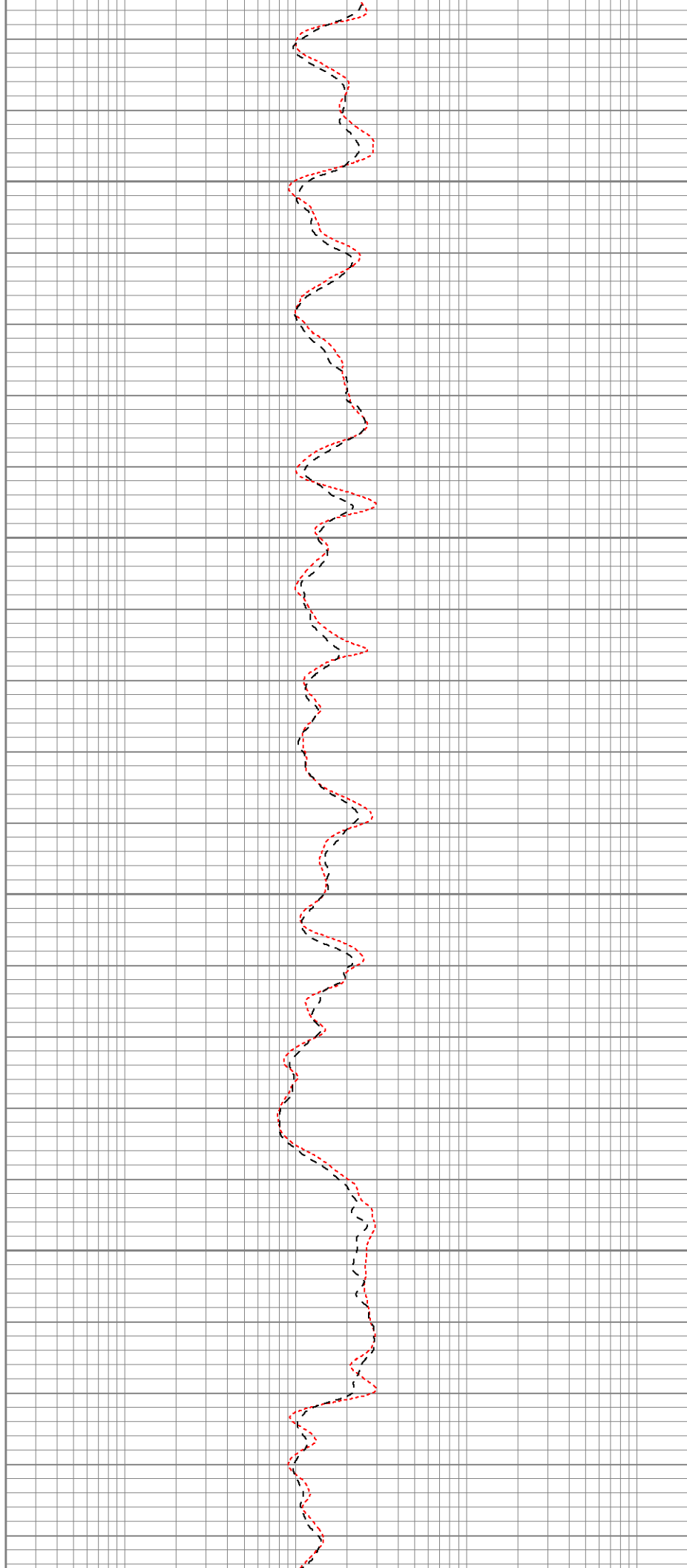


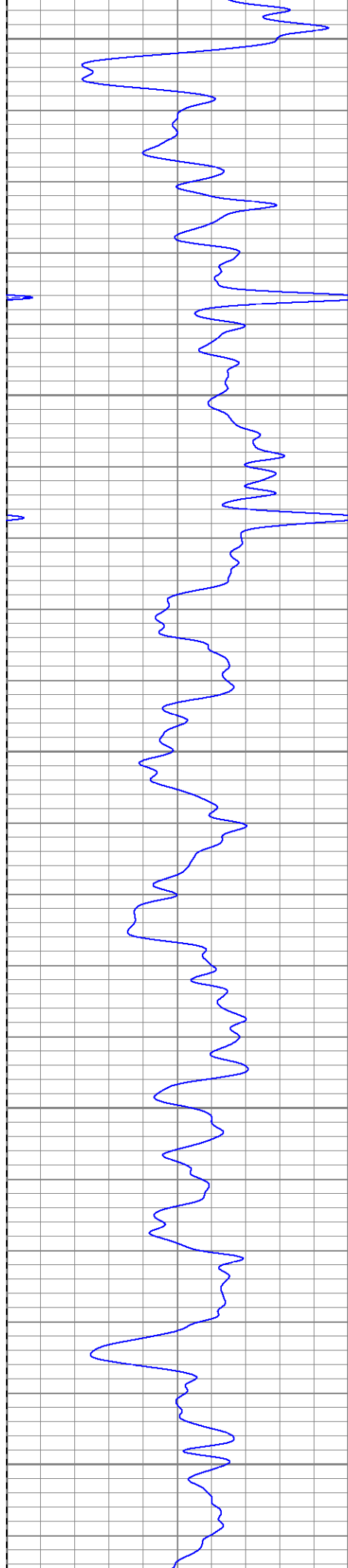
650

700

750

800





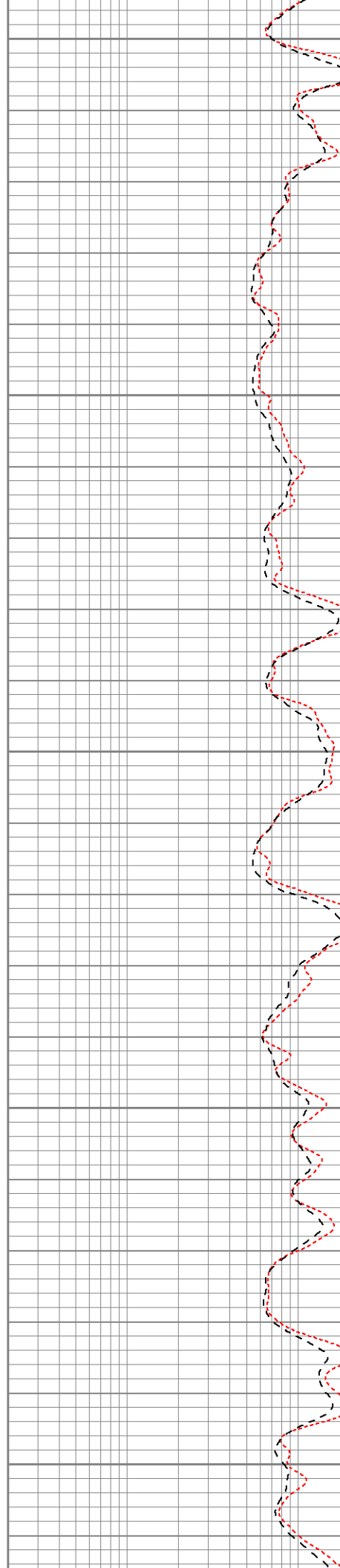
850

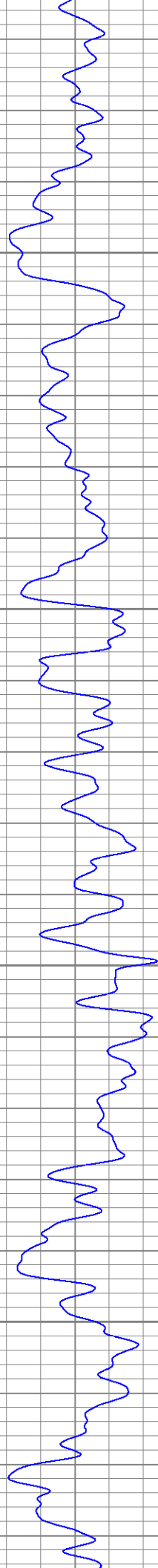
900

950

1000

1050





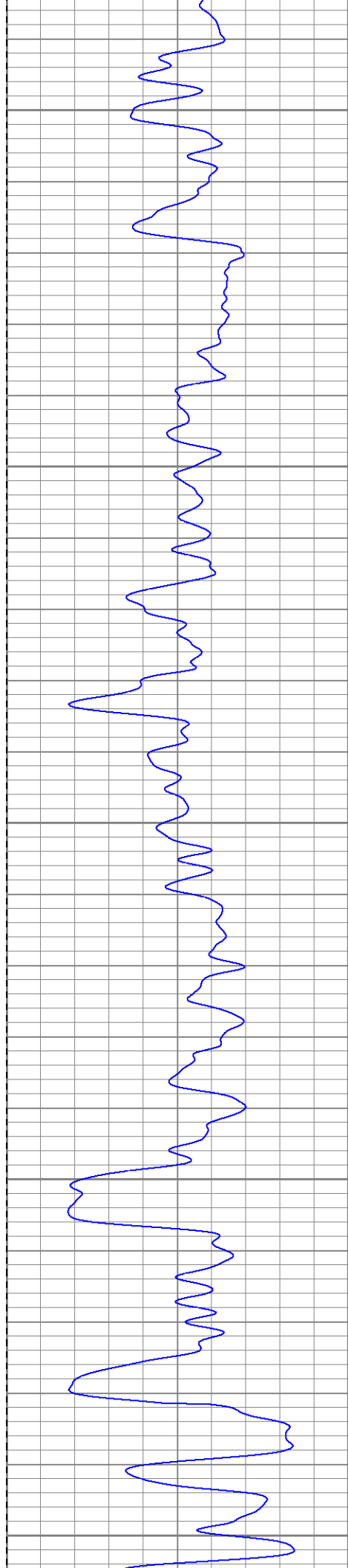
1100

1150

1200

1250





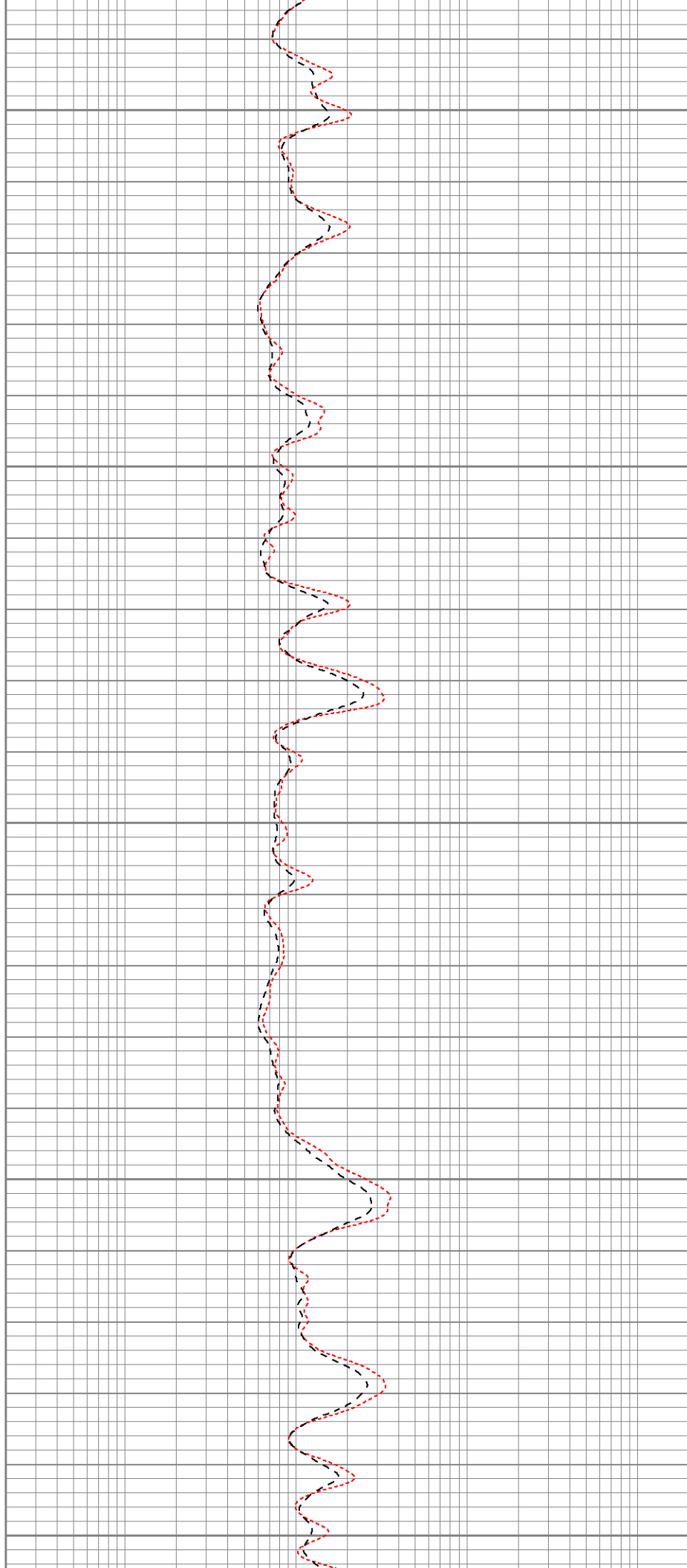
1300

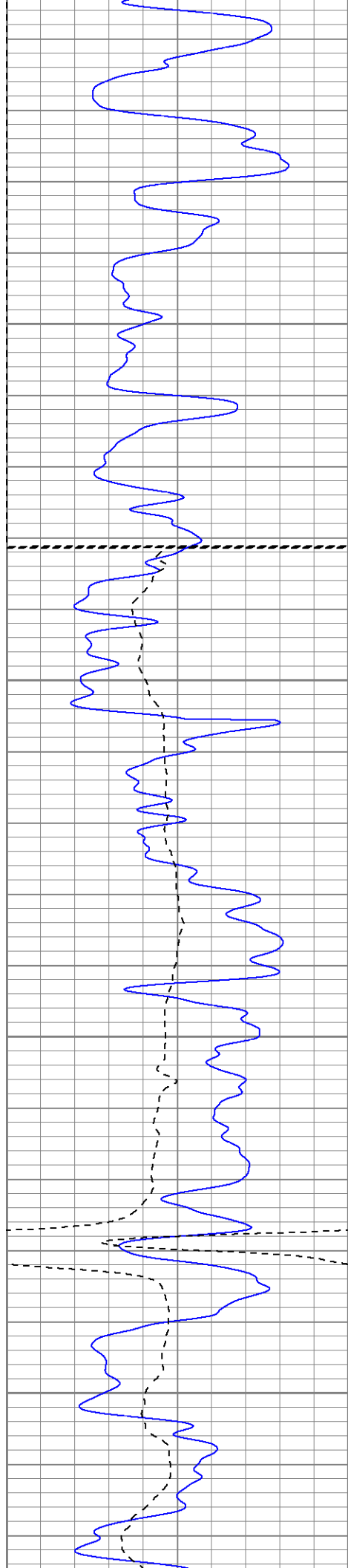
1350

1400

1450

1500





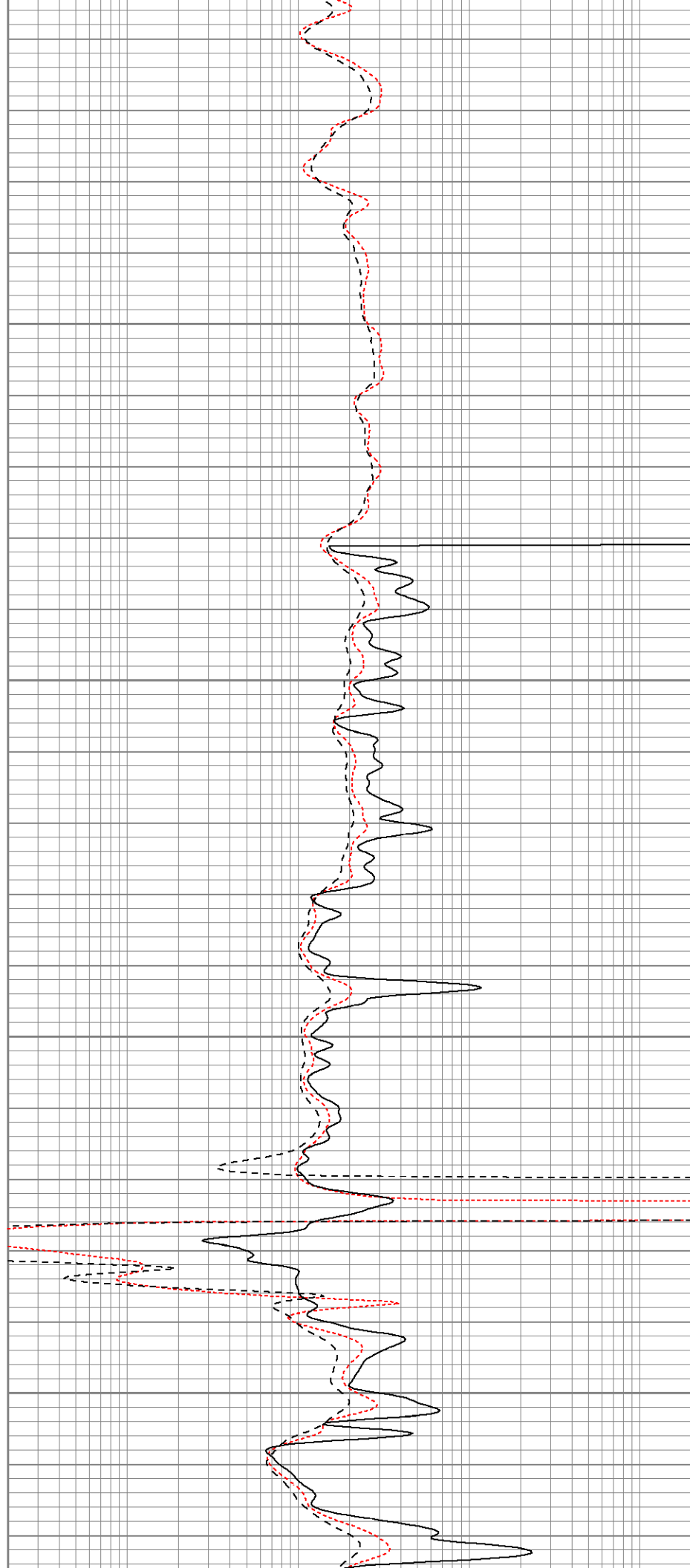
1550

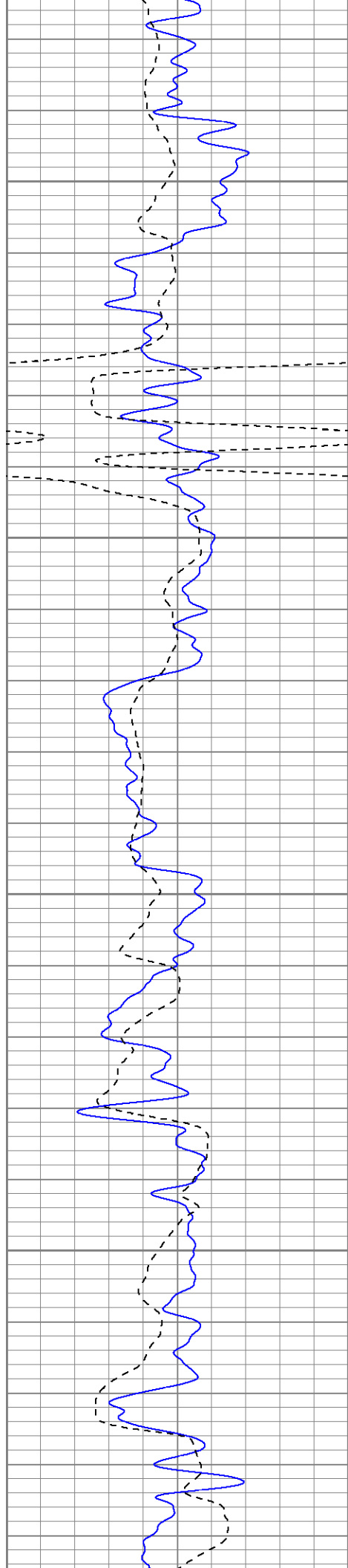
Fluid Level

1600

1650

1700



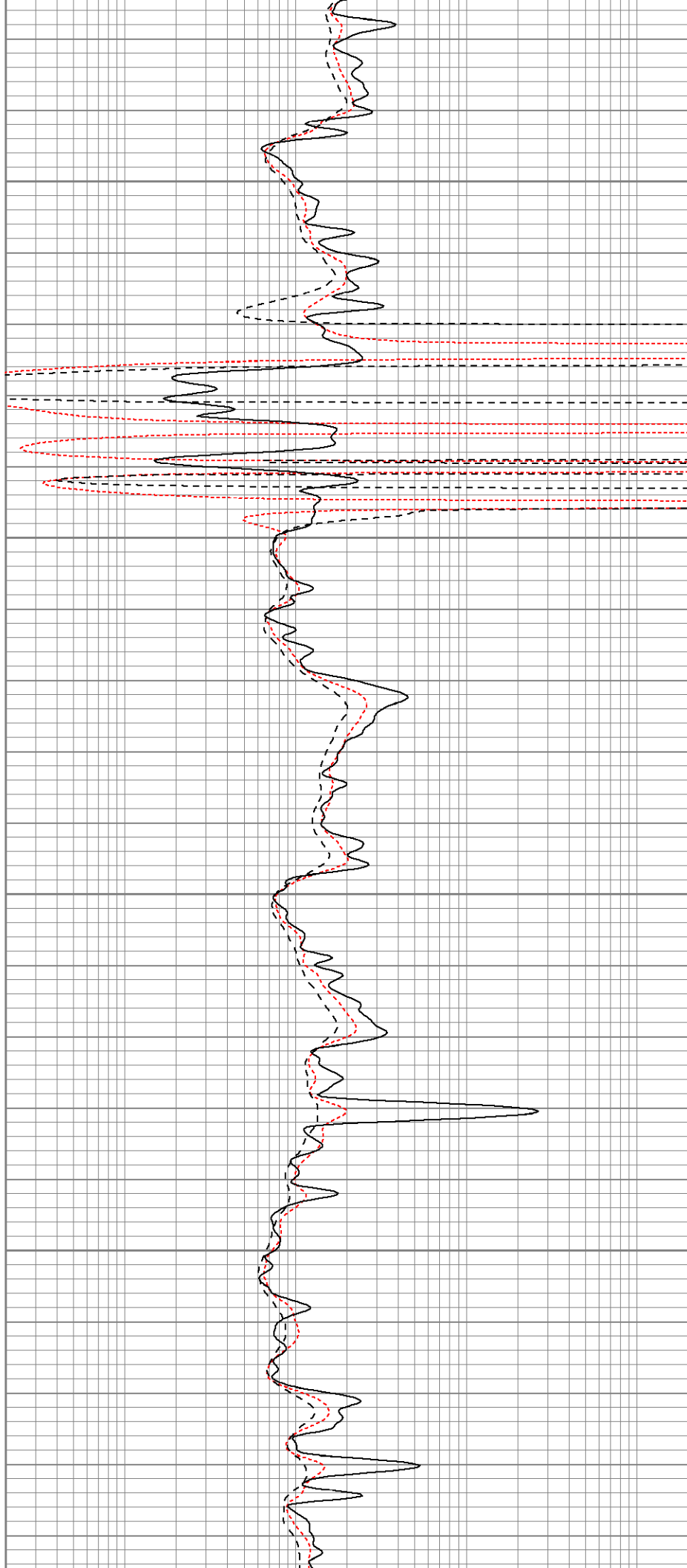


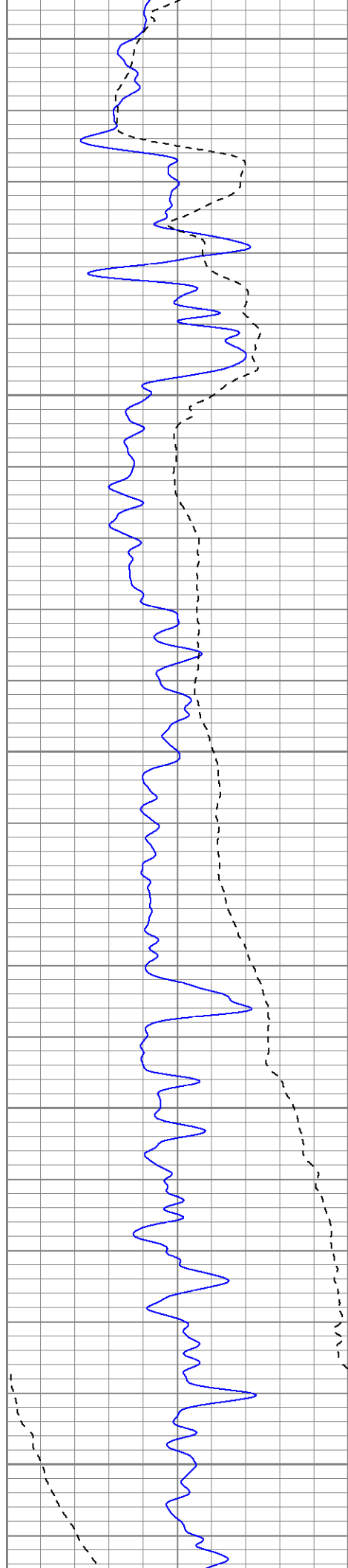
1750

1800

1850

1900





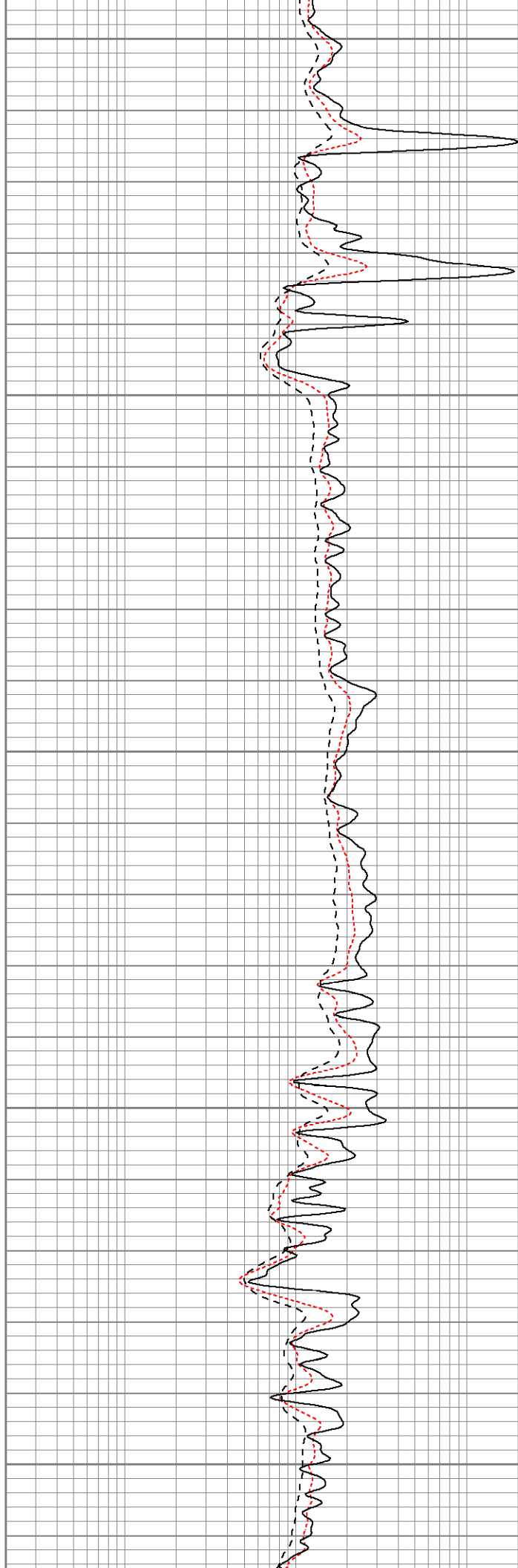
1950

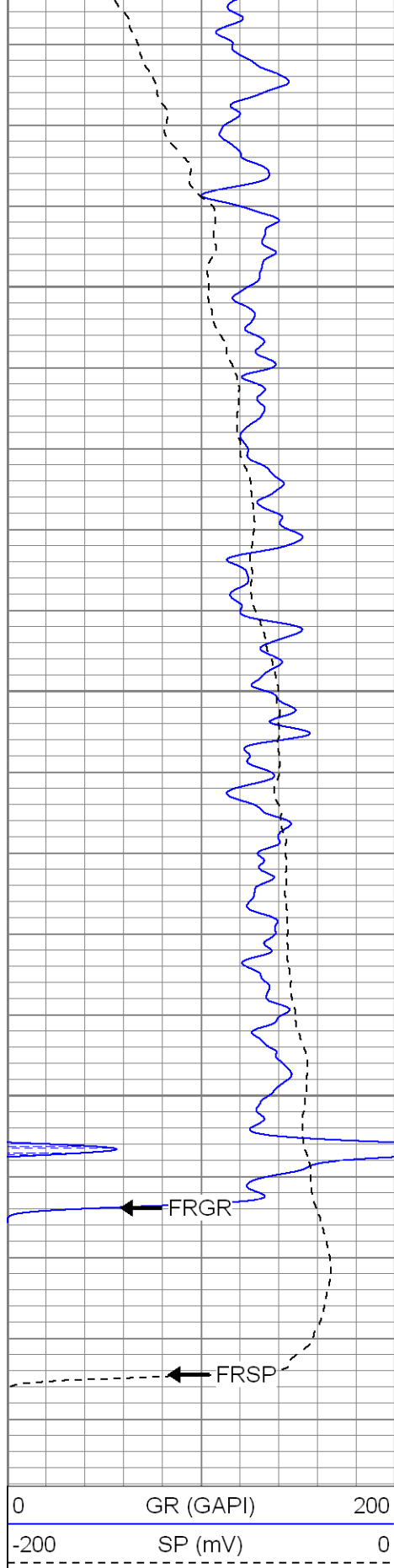
2000

2050

2100

2150

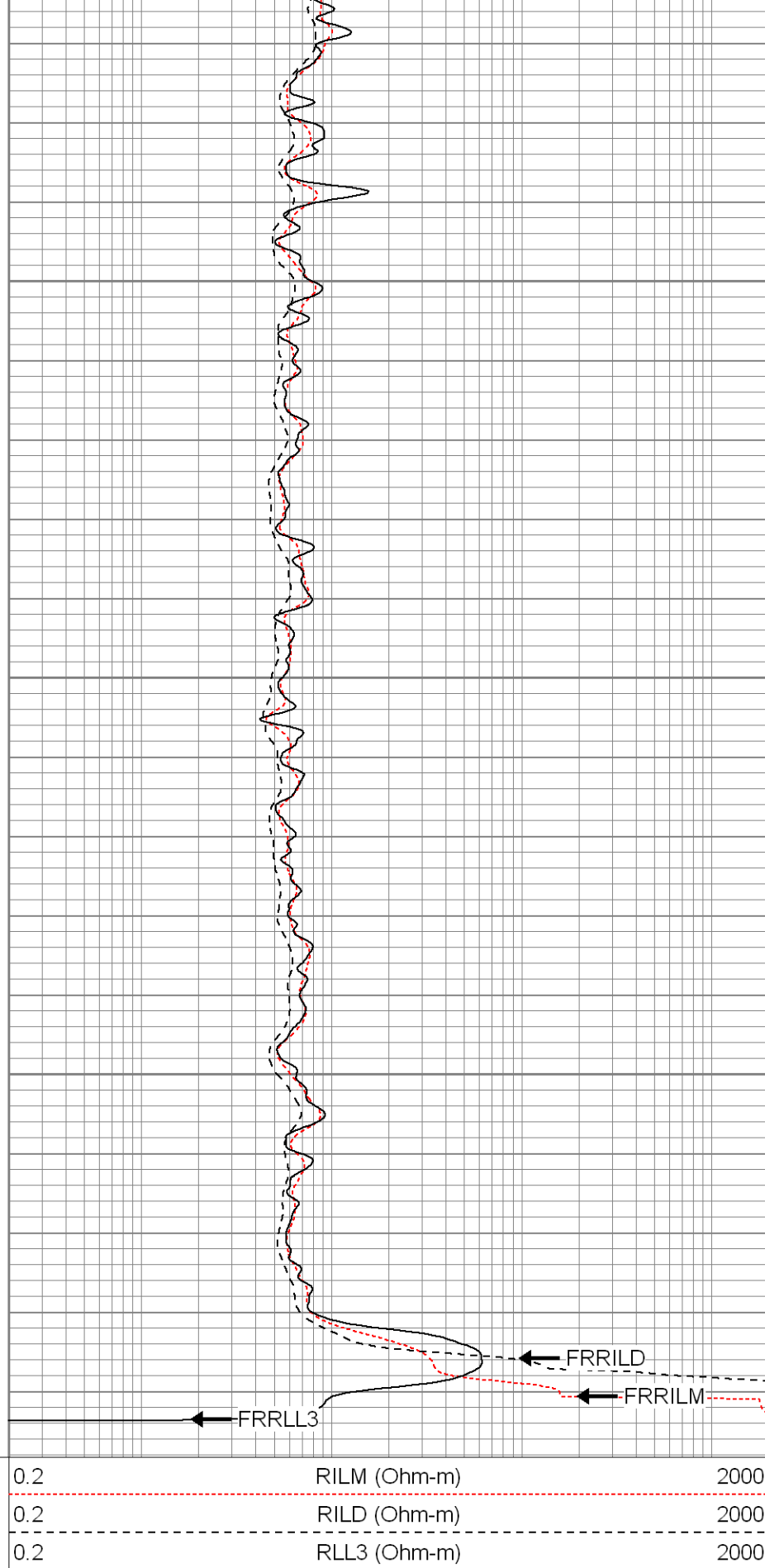




2200

2250

2300



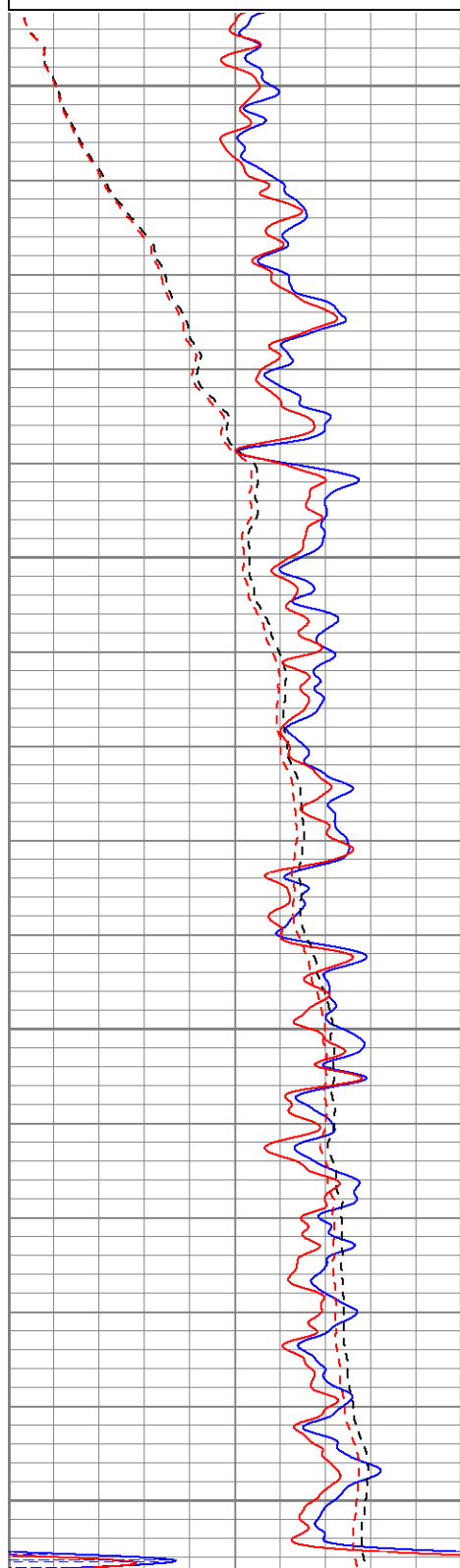
SUPERIOR
Black Lick, Pa.
Mercer, Pa.
Wooster, Oh.

Repeat Pass

Database File: xtone2502.db
Dataset Pathname: pass1.1
Presentation Format: dil
Dataset Creation: Tue Mar 18 14:51:03 2008 by Calc Open-Cased 070814
Charted by: Depth in Feet scaled 1:240

0	GR (GAPI)	200
-200	SP (mV)	0
-200	SP-repeat (mV)	0
0	GR-repeat (GAPI)	200

0.2	RILM (Ohm-m)	2000
0.2	RILD (Ohm-m)	2000
0.2	RLL3 (Ohm-m)	2000
0.2	RILD-repeat (Ohm-m)	2000
0.2	RLL3-repeat (Ohm-m)	2000
0.2	RILM-repeat (Ohm-m)	2000

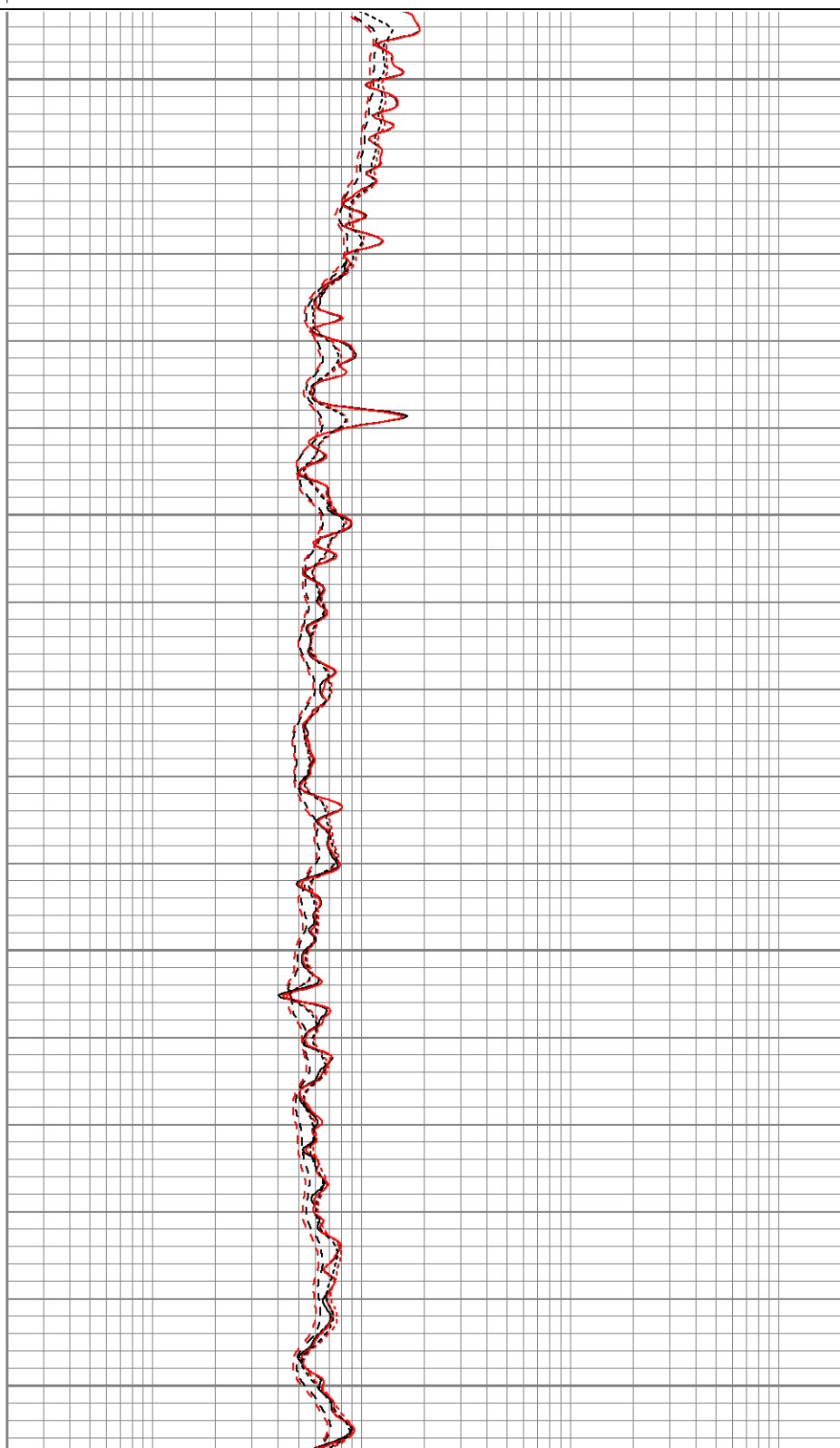


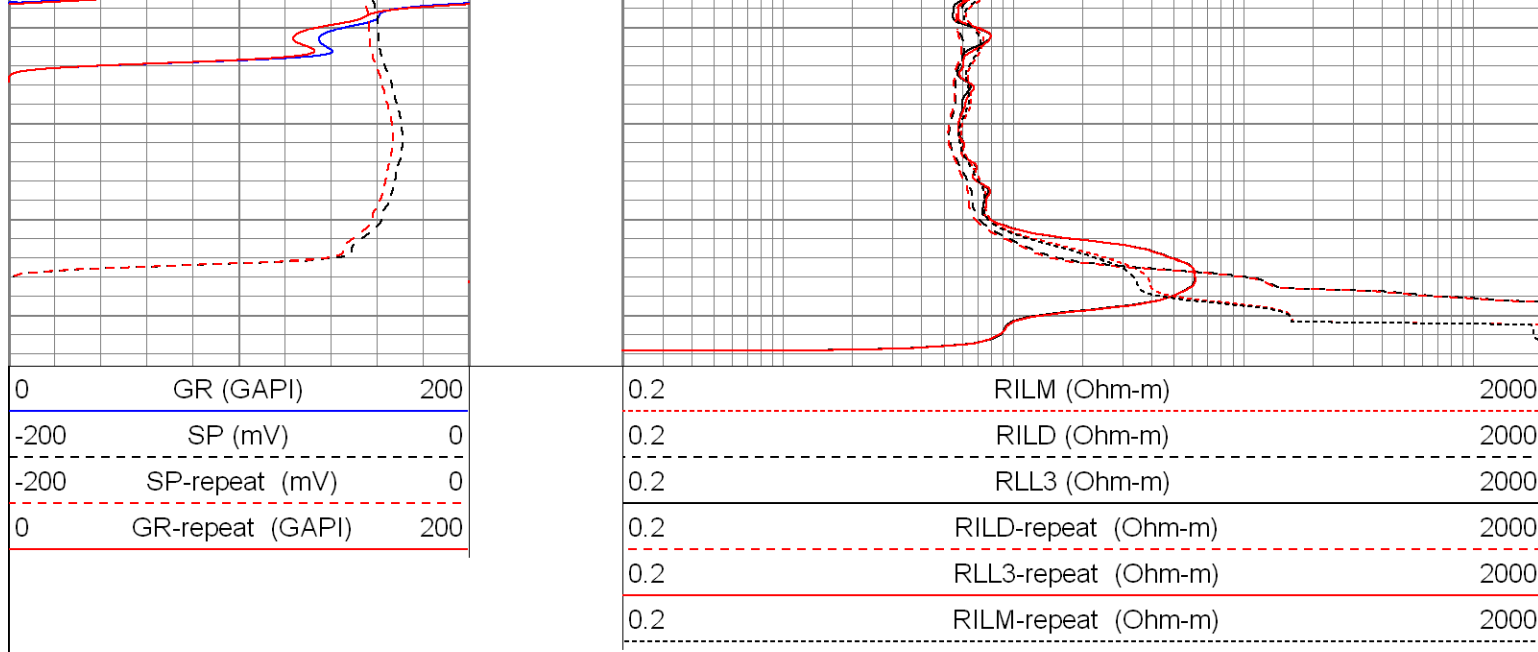
2150

2200

2250

2300





Calibration Report	
Database File:	xtone2502.db
Dataset Pathname:	pass1
Dataset Creation:	Tue Mar 18 14:17:09 2008 by Log Open-Cased 070814

Dual Induction Calibration Report

Serial-Model:	5375-G
Surface Cal Performed:	Wed Mar 05 01:17:28 2008
Downhole Cal Performed:	Wed Mar 05 01:18:19 2008

Surface Calibration									
Readings				References			Results		
Loop:	Air	Loop		Air	Loop		m	b	
Deep	0.000	0.619	V	0.000	500.000	mmho-m	808.416	-0.143	
Medium	0.003	0.740	V	0.000	550.000	mmho-m	746.121	-2.291	
Internal:	Zero	Cal		Zero	Cal		m	b	
Deep	0.000	0.618	V	0.000	500.000	mmho-m	809.686	-0.193	
Medium	0.003	0.740	V	0.000	550.000	mmho-m	746.925	-2.612	

Downhole Calibration								
Internal:	Readings			References			Results	
	Zero	Cal		Zero	Cal		m	b
Deep	0.133	499.798	mmho-m	0.049	499.265	mmho-m	0.999	-0.084
Medium	0.460	549.973	mmho-m	0.319	549.727	mmho-m	1.000	-0.141
Shallow	2.510	0.008	V	500.000	2.000	Ohm-m	124.000	-3.000

Compensated Density Calibration Report	
--	--

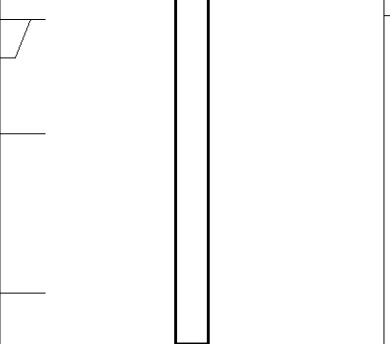
Serial-Model:	2118-poilex
Source / Verifier:	/
Master Calibration Performed:	Mon Mar 17 09:00:21 2008

Master Calibration		
Density	Far Detector	Near Detector

Magnesium	1.710	g/cc	689.13	662.28	cps
Aluminum	2.590	g/cc	156.84	466.09	cps
Spine Angle = 76.65			Density/Spine Ratio = 0.578		
	Size		Reading		
Small Ring	8.50	in	4.33	V	
Large Ring	14.00	in	8.24	V	

Gamma Ray Calibration Report					
Serial Number:	2001				
Tool Model:	OH				
Performed:	Wed Mar 05 01:30:07 2008				
Calibrator Value:	1.0		GAPI		
Background Reading:	0.0		cps		
Calibrator Reading:	1.0		cps		
Sensitivity:	0.2500		GAPI/cps		
Neutron Calibration Report					
Serial Number:	5145				
Tool Model:	G				
Performed:	Tue Mar 04 08:46:08 2008				
Calibrator Value:	1200		NAPI		
Calibrator Reading:	1700		cps		
Sensitivity:	0.705882		NAPI/cps		

Sensor	Offset (ft)	Schematic	Description	Len (ft)	OD (in)	Wt (lb)
NEU	37.31		None	0.75	1.50	5.00
			NEU-G (5145) Gearhart Epithermal	5.65	3.50	85.00
GR	31.47		GR-OH (2001) 2001	3.56	3.25	40.00
LSD DCAL SSD	23.30		CDL-poilex (2118)	8.83	4.00	275.00
	22.89					
	22.72					

CILD	10.60		DIL-G (5375) Gearhart	21.47	4.00	345.00
SP	10.60					
CILM	6.89					
RLL3	1.70					
Dataset: xtone2502.db: field/well/run1/pass1 Total Length: 40.26 ft Total Weight: 750.00 lb O.D. 4.00 in						