

Company Bonanza Creek Operating Co. LLC

Well North Plate 24-24

Field Wattenberg

County Weld

State/Province Colorado

Location 660 FSL & 1969 FWL

SE SW

Sec - 24 Twp - 5N Rge - 63W

Log Measured From ICB

Drilling Measured From ICB

Drilling Date October 10, 2007

Drilling Operator

Drilling Depth (m) 6700

Drilling Depth (ft) 6699

Bottom Logged (m) 6699

Bottom Logged (ft) 6699

Company

Well

County

State/Prov

Location

SE SW

Sec - 24 Twp - 5N Rge - 63W

Log Measured From ICB

Drilling Measured From ICB

Drilling Date October 10, 2007

Drilling Operator

Drilling Depth (m) 6700

Drilling Depth (ft) 6699

Bottom Logged (m) 6699

Bottom Logged (ft) 6699

Company

Well

County

State/Prov

Location

SE SW

Sec - 24 Twp - 5N Rge - 63W

Log Measured From ICB

Drilling Measured From ICB

Drilling Date October 10, 2007

Drilling Operator

Drilling Depth (m) 6700

Drilling Depth (ft) 6699

Bottom Logged (m) 6699

Bottom Logged (ft) 6699

Company

Well

County

State/Prov

Location

SE SW

Sec - 24 Twp - 5N Rge - 63W

Log Measured From ICB

Drilling Measured From ICB

Drilling Date October 10, 2007

Drilling Operator

Drilling Depth (m) 6700

Drilling Depth (ft) 6699

Bottom Logged (m) 6699

Bottom Logged (ft) 6699

Company

Well

County

State/Prov

Location

SE SW

Sec - 24 Twp - 5N Rge - 63W

Log Measured From ICB

Drilling Measured From ICB

Drilling Date October 10, 2007

Drilling Operator

Drilling Depth (m) 6700

Drilling Depth (ft) 6699

Bottom Logged (m) 6699

Bottom Logged (ft) 6699

Company

Well

County

State/Prov

Location

SE SW

Sec - 24 Twp - 5N Rge - 63W

Log Measured From ICB

Drilling Measured From ICB

Drilling Date October 10, 2007

Drilling Operator

Drilling Depth (m) 6700

Drilling Depth (ft) 6699

Bottom Logged (m) 6699

Bottom Logged (ft) 6699

Company

Well

County

State/Prov

Location

SE SW

Sec - 24 Twp - 5N Rge - 63W

Log Measured From ICB

Drilling Measured From ICB

Drilling Date October 10, 2007

Drilling Operator

Drilling Depth (m) 6700

Drilling Depth (ft) 6699

Bottom Logged (m) 6699

Bottom Logged (ft) 6699

Company

Well

County

State/Prov

Location

SE SW

Sec - 24 Twp - 5N Rge - 63W

Log Measured From ICB

Drilling Measured From ICB

Drilling Date October 10, 2007

Drilling Operator

Drilling Depth (m) 6700

Drilling Depth (ft) 6699

Bottom Logged (m) 6699

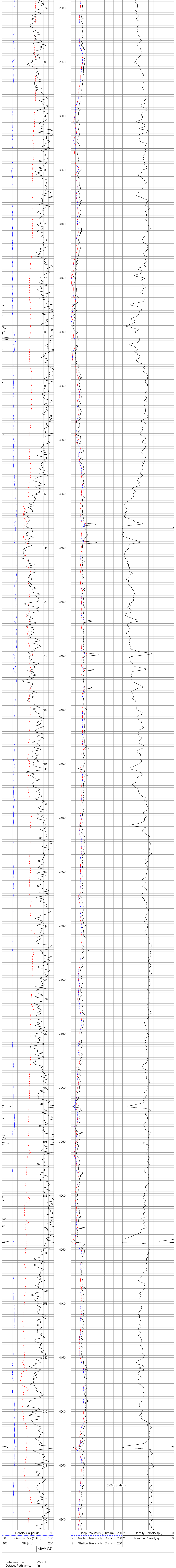
Bottom Logged (ft) 6699

All interpretations are opinions based on inferences from electrical or other measurements and we cannot and do not guarantee the accuracy or correctness of any interpretation, and we shall not, except in the case of gross or willful negligence on our part, be liable or responsible for any loss, costs, damages, or expenses incurred or sustained by anyone resulting from any interpretation made by any of our officers, agents or employees. These interpretations are also subject to our general terms and conditions set out in our current Price Schedule.

Comments

Annular volume calculated for 4.5" casing
Mid Continent Rig 1
Thank you for using Phoenix Surveys!!
API #. 05-123-25827-00

Database File: 9279 db
Dataset Pathname: fin
Presentation Format: pdc1
Dataset Creation: Fri Oct 10 13:31:34 2008
Charted by: Depth in Feet scaled 1:240



Database File: 9279 db
Dataset Pathname: fin
Presentation Format: pdc1
Dataset Creation: Fri Oct 10 13:31:34 2008
Charted by: Depth in Feet scaled 1:240

