

PHOENIX SURVEYS, INC.

COMPENSATED DENSITY
COMPENSATED NEUTRON
DUAL INDUCTION

Company
Well
Field
County

Bonanza Creek Operating Co. LLC
North Plate 11-24
Wattenberg
Weld

Location
State/Province
County

660' FNL & 559' FWL
NW NW
Sec. 24 Twp 5N Rge 63W
Elevation 4614

Other Services
None

Log Measurement
Log Measurement From
Log Measurement To

KB
KB
KB

Log Measurement From
Log Measurement To

KB
KB
KB

Date
Run Number
Depth
Bottom Log Interval

September 12, 2007
6726
6722
6722

6726
6722
6722

Casing Identifier
Casing Logger
Bit Size

373
373
7-7/8"

Type Fluid in Hole
Type Fluid in Hole
Type Fluid in Hole

Chemical
Chemical
Chemical

Source of Sample
Rm @ Mass Temp
Rm @ Mass Temp
Source of Rm/Temp
Rm @ Mass Temp
Time Log on Bottom
Maximum Recorded Temperature

Flowline
3.67 @ 72° F
3.67 @ 72° F
Measure / CMC
1.2 @ 210° F
1600
210° F

Equipment Number
Location
Recorded By
Witnessed By

4400
Brighton, CO
Matt Gill
Kerry McCowen

Robb Bradman
Marshall Barton

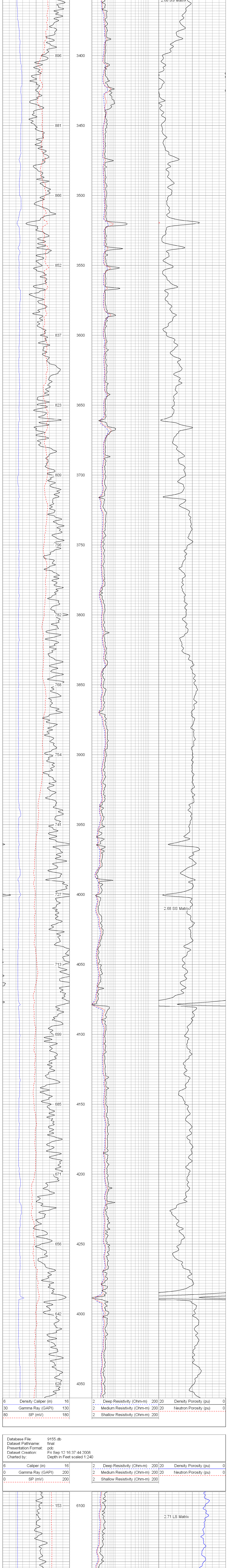
<<< Fold Here >>>

All interpretations are opinions based on inferences from electrical or other measurements and we cannot and do not guarantee the accuracy or correctness of any interpretation, and we shall not, except in the case of gross or willful negligence on our part, be liable or responsible for any loss, costs, damages, or expenses incurred or sustained by anyone resulting from any interpretation made by any of our officers, agents or employees. These interpretations are also subject to our general terms and conditions set out in our current Price Schedule.

Comments

Annular volume calculated for 4-1/2" casing
Mid Continent Rig #1
Thank you for using Phoenix Surveys!!
API #: 05-123-25824-00

Database File:	9155.db
Dataset Pathname:	final
Presentation Format:	pdf
Dataset Creation:	Fri Sep 12 16:37:44 2008
Charted by:	Depth in Feet scaled 1:240



6	Caliper (in)	16	2	Deep Resistivity (Ohm-m)	200	20	Density Porosity (pu)	0
0	Gamma Ray (GAPI)	200	2	Medium Resistivity (Ohm-m)	200	20	Neutron Porosity (pu)	0
0	SP (mV)	200	2	Shallow Resistivity (Ohm-m)	200			

