



COMPENSATED DENSITY  
DUAL INDUCTION

Company Bonanza Creek Operating Co. LLC  
Well North Plate 13-24  
Field Wattenberg  
County Weld  
State/Province Colorado

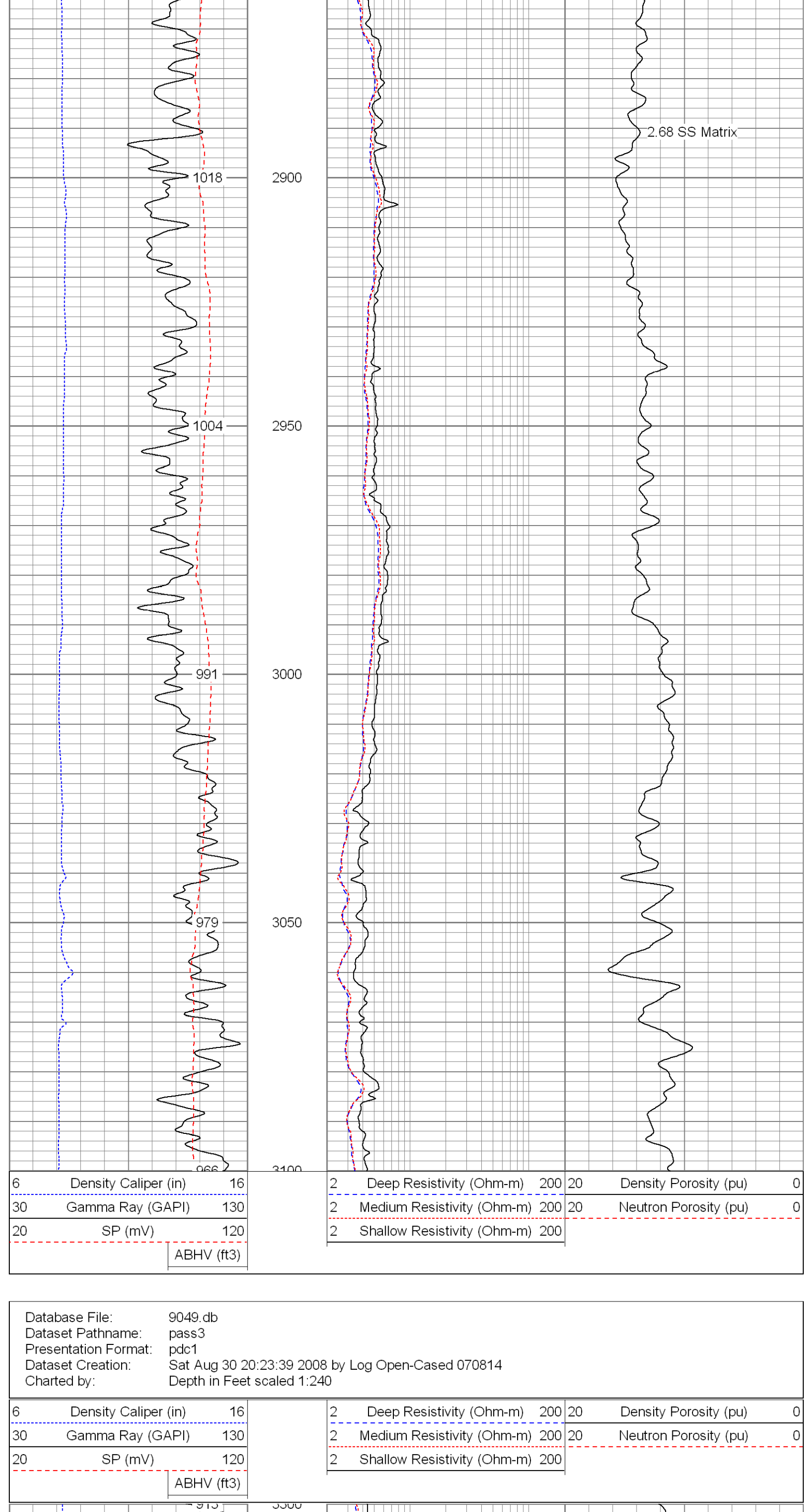
Location 1981 FSL & 626 FVL  
Sec -24 Twp -5N R9e -63W  
Company  
Well Field  
State/Priv  
Elevation 4550  
Log Measured From K/B  
Date August 30, 2008  
Depth (feet) 6693  
Bottom Logged Interval 6689 - 6693  
Casing Depth 374  
Type Fluid in Hole Polymer Gel

Depth / Velocity 9.7 / 1.52  
Pit Fluid Color 3.4 @ 84 F  
Rm @ Kern Temp 2.5 @ 84 F  
Rm @ Mean Temp 1.2 @ 76 F  
Rm @ BHRT 1.2 @ 76 F  
Time Correction Started 15:00  
Maximum Recorded Temperature 218 F  
Equipment Number 4600  
Recorded By Eric Christensen  
Checked By Marshall Jackson

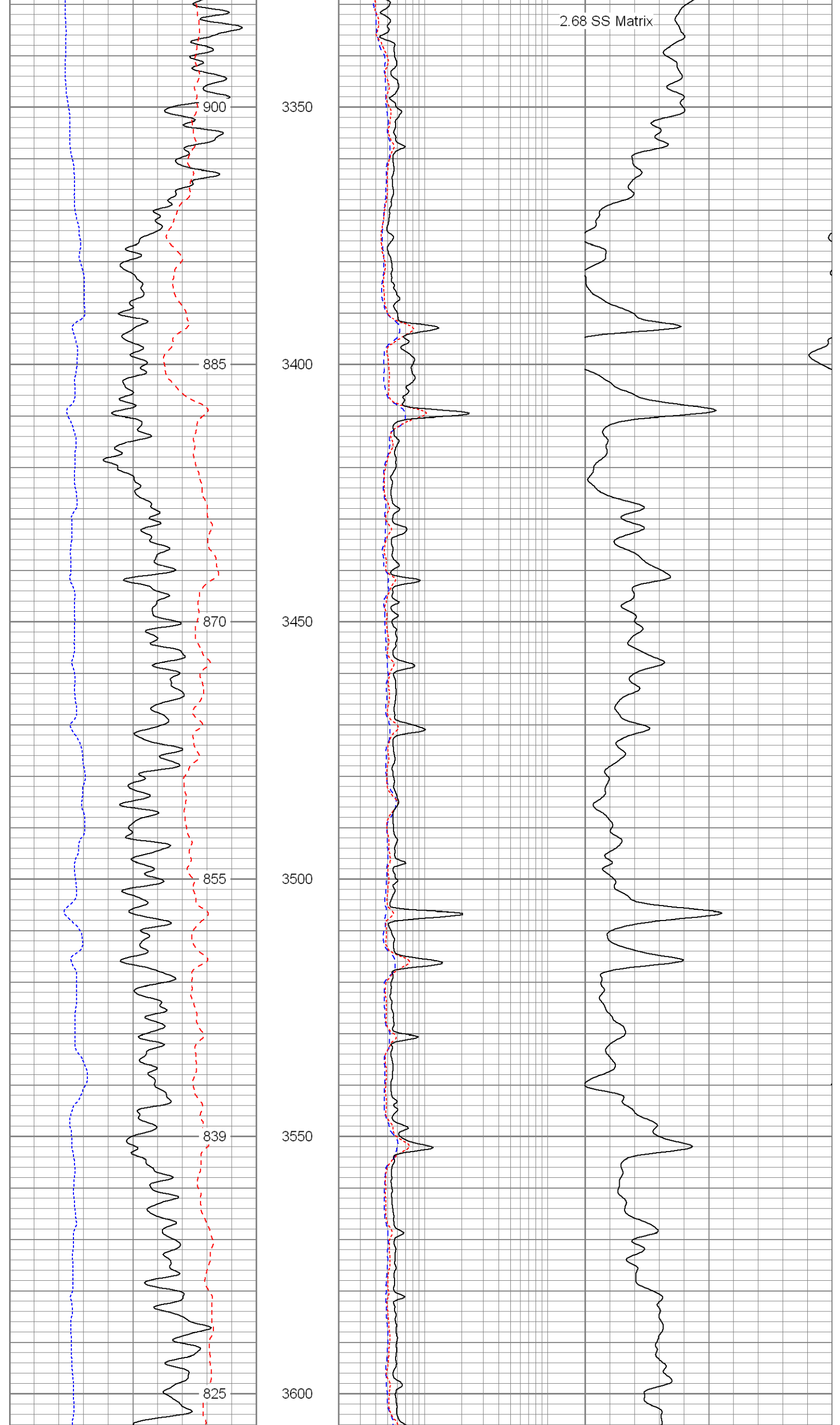
Database File: 9049.db  
Dataset Pathname: pass3  
Presentation Format: pdc1  
Dataset Creation: Sat Aug 30 20:23:39 2008 by Log Open-Cased 070814  
Charted by: Depth in Feet scaled 1.240

Annular volume calculated for 4.5" casing  
Mid Continent Rig 1  
Thank you for using Phoenix Surveys!!  
API #: 05-123-25826-00

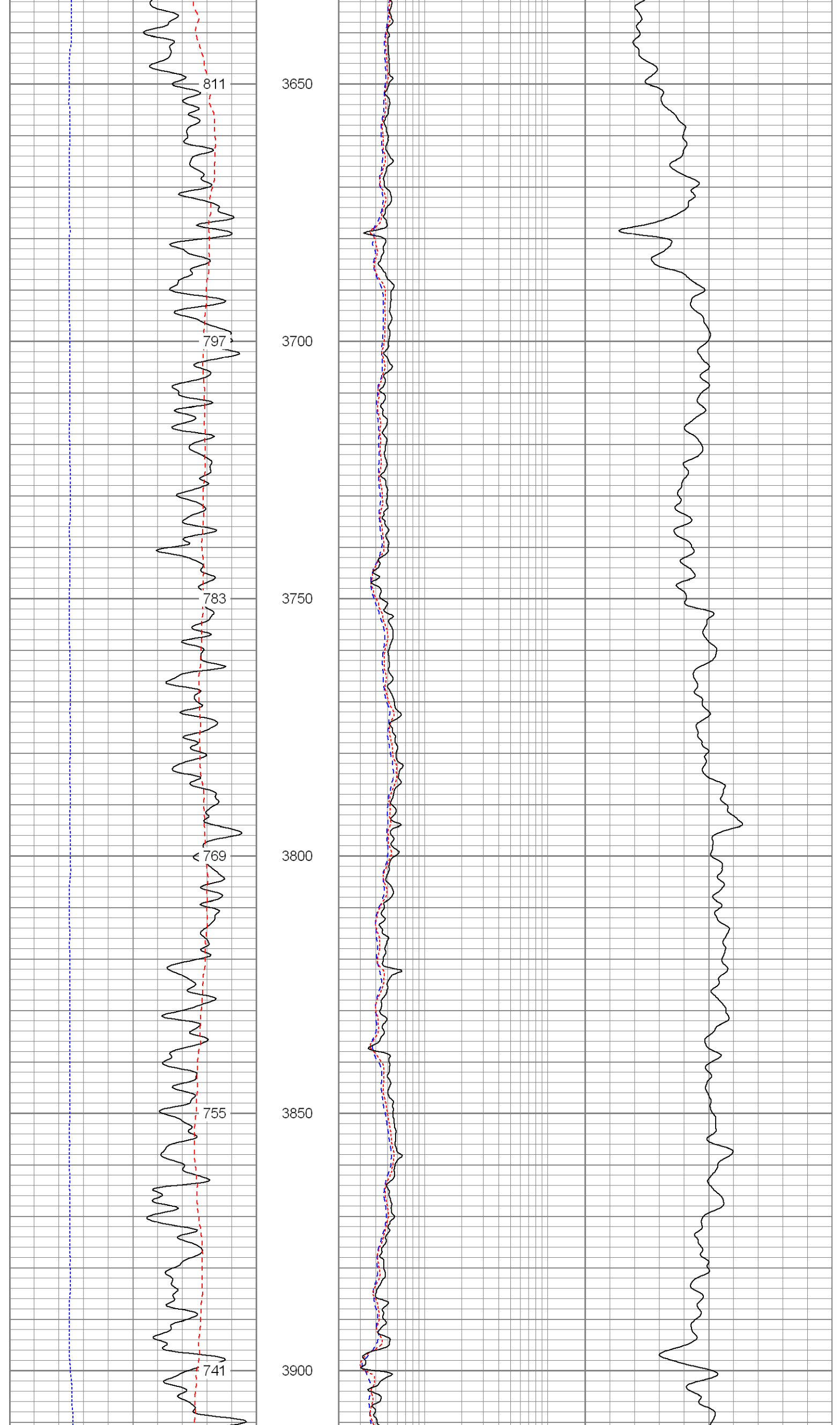
Database File: 9049.db  
Dataset Pathname: pass3  
Presentation Format: pdc1  
Dataset Creation: Sat Aug 30 20:23:39 2008 by Log Open-Cased 070814  
Charted by: Depth in Feet scaled 1.240



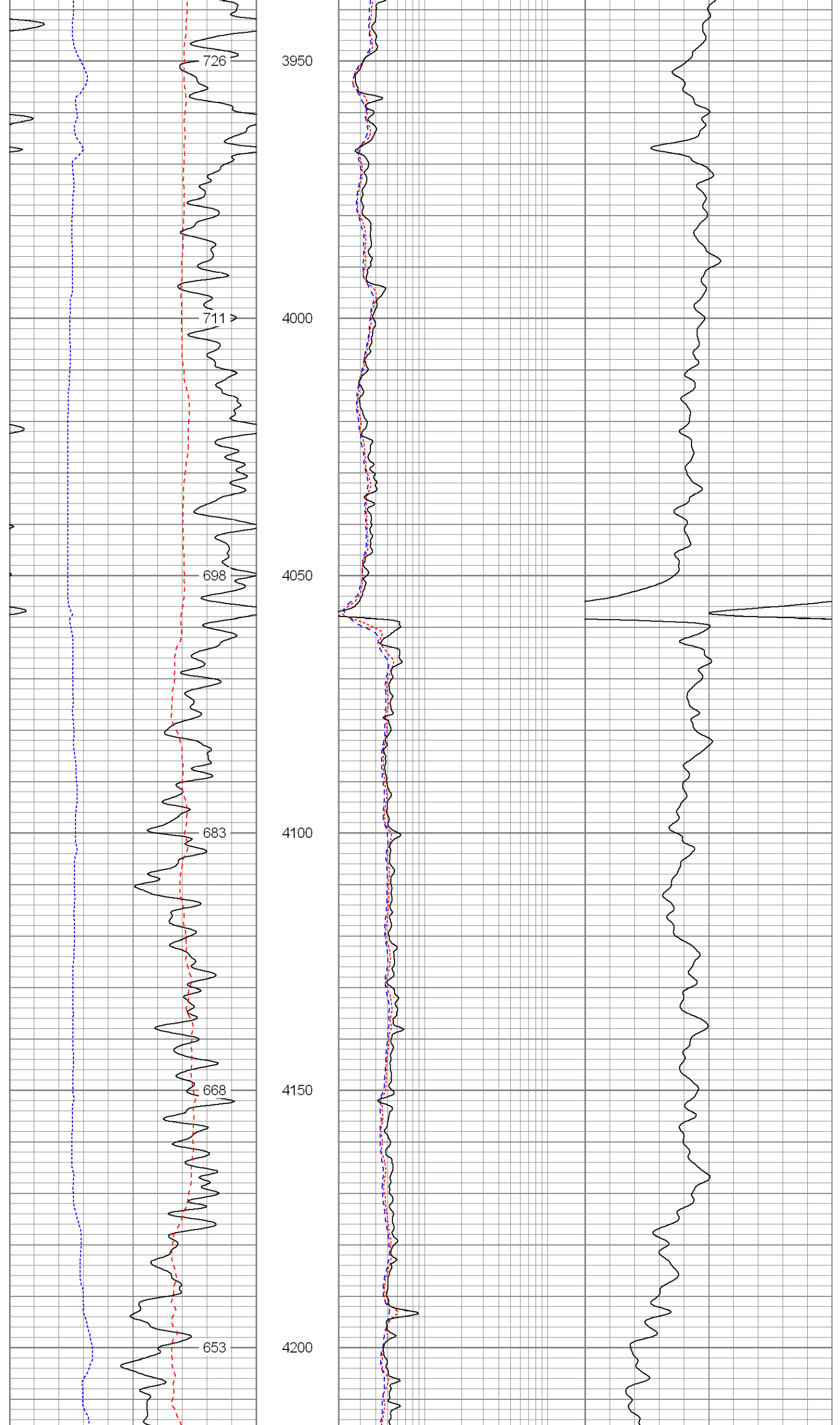
Database File: 9049.db  
Dataset Pathname: pass3  
Presentation Format: pdc1  
Dataset Creation: Sat Aug 30 20:23:39 2008 by Log Open-Cased 070814  
Charted by: Depth in Feet scaled 1.240



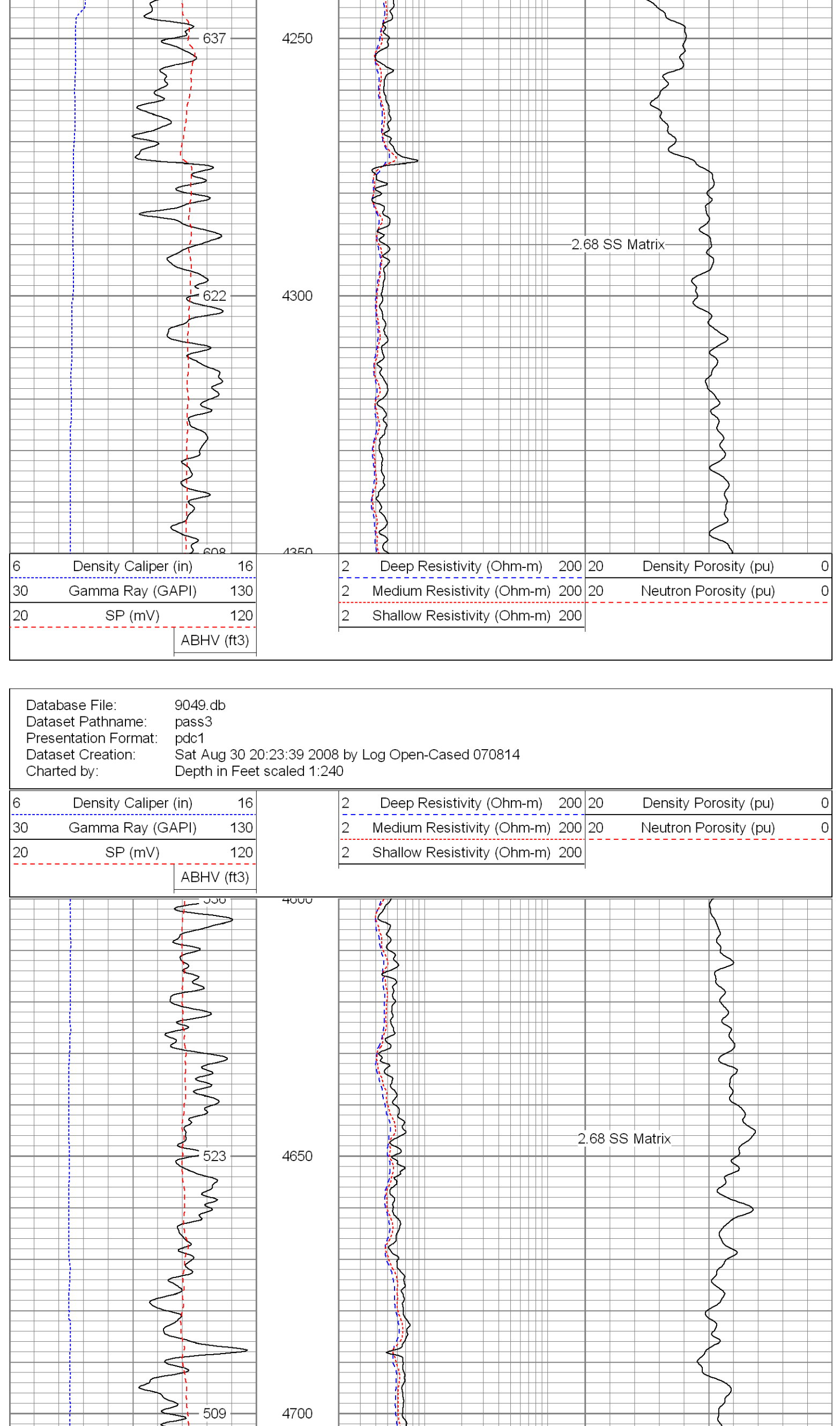
Database File: 9049.db  
Dataset Pathname: pass3  
Presentation Format: pdc1  
Dataset Creation: Sat Aug 30 20:23:39 2008 by Log Open-Cased 070814  
Charted by: Depth in Feet scaled 1.240



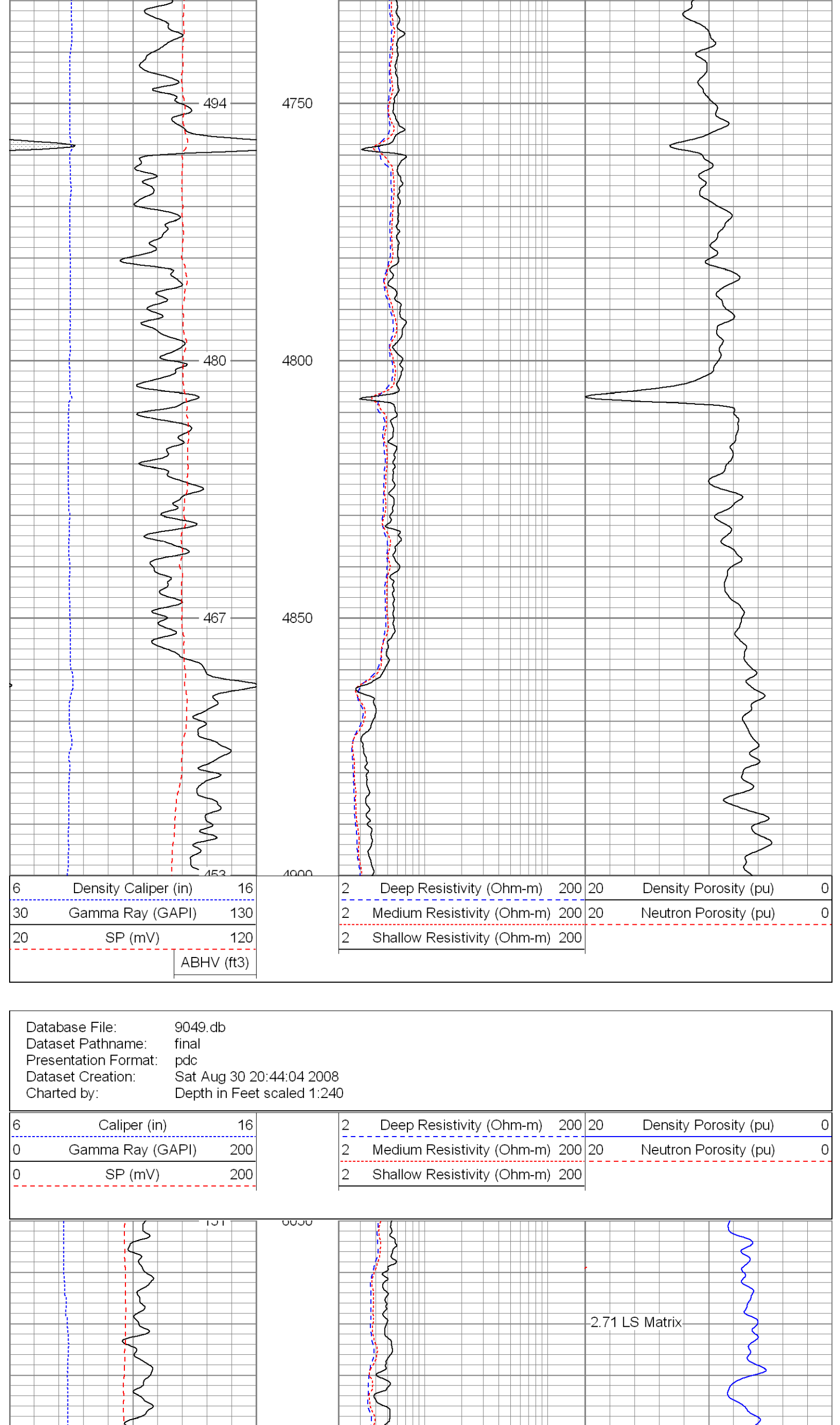
Database File: 9049.db  
Dataset Pathname: pass3  
Presentation Format: pdc1  
Dataset Creation: Sat Aug 30 20:23:39 2008 by Log Open-Cased 070814  
Charted by: Depth in Feet scaled 1.240



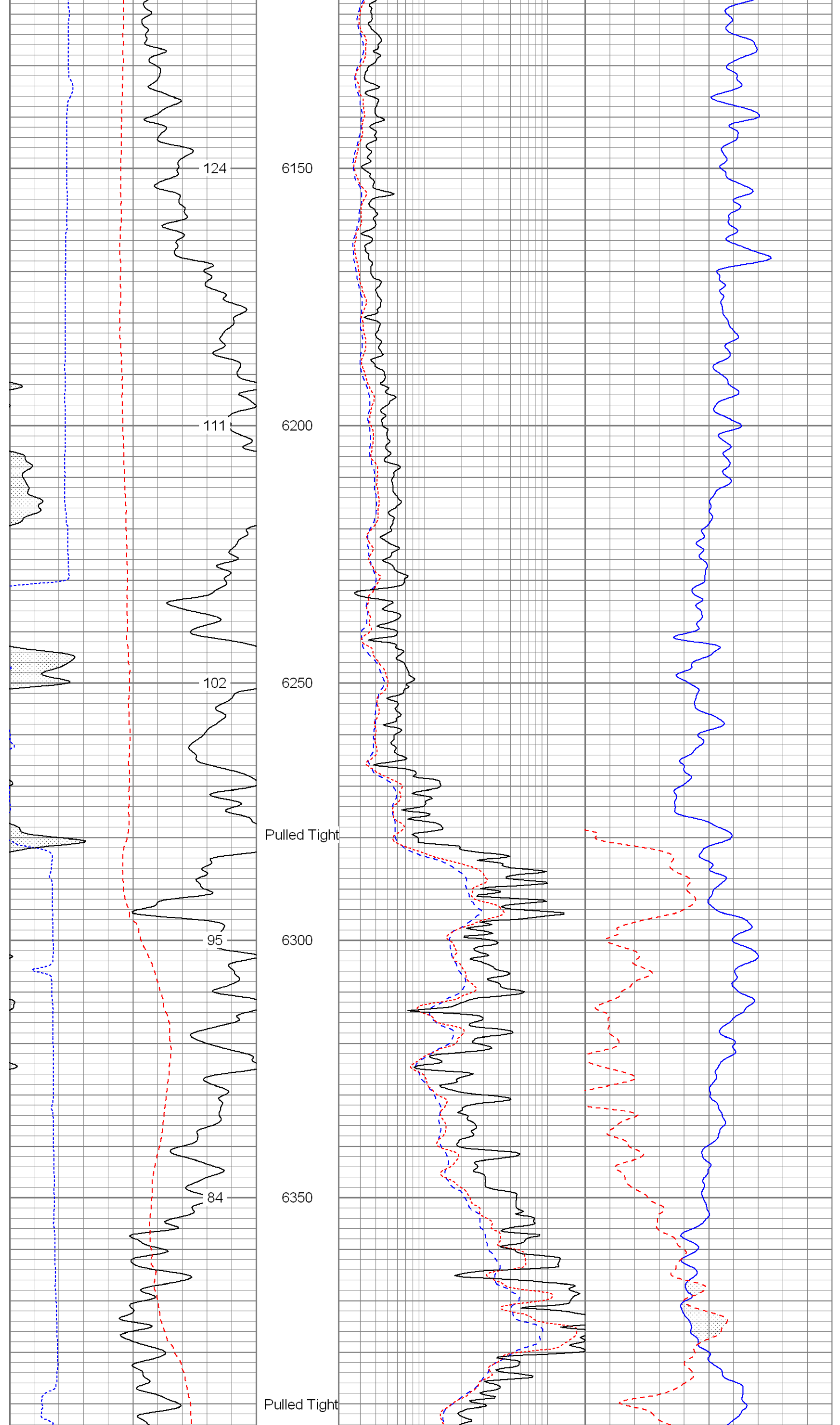
Database File: 9049.db  
Dataset Pathname: pass3  
Presentation Format: pdc1  
Dataset Creation: Sat Aug 30 20:23:39 2008 by Log Open-Cased 070814  
Charted by: Depth in Feet scaled 1.240



Database File: 9049.db  
Dataset Pathname: pass3  
Presentation Format: pdc1  
Dataset Creation: Sat Aug 30 20:23:39 2008 by Log Open-Cased 070814  
Charted by: Depth in Feet scaled 1.240



Database File: 9049.db  
Dataset Pathname: pass3  
Presentation Format: pdc1  
Dataset Creation: Sat Aug 30 20:23:39 2008 by Log Open-Cased 070814  
Charted by: Depth in Feet scaled 1.240



Database File: 9049.db  
Dataset Pathname: pass3  
Presentation Format: pdc1  
Dataset Creation: Sat Aug 30 20:23:39 2008 by Log Open-Cased 070814  
Charted by: Depth in Feet scaled 1.240

