



SUPERIOR
Black Lick, Pa.
Mercer, Pa.
Wooster, Oh.
Cleveland, Ok.
Trinidad, Co.

CEMENT BOND LOG

Company XTO Energy, Inc.
Well Apache Canyon 04-02
Field Purgatoire River
County Las Animas State CO

Location: API # : 05 071 09634 00

1305' FNL & 2444' FEL

SEC 04 TWP 34S RGE 67W

Permanent Datum Ground Level Elevation 7323'
Log Measured From Ground Level
Drilling Measured From Ground Level

Other Services
TEMP
Elevation
K.B. -----
D.F. -----
G.L. 7323'

Date 8-28-08

Run Number	One
Depth Driller	1925'
Depth Logger	1848'
Bottom Logged Interval	1847'
Top Log Interval	Surface
Open Hole Size	7 7/8"
Type Fluid	Water
Density / Viscosity	///
Max. Recorded Temp.	104F
Estimated Cement Top	Surface
Time Well Ready	ROA
Time Logger on Bottom	2:15PM
Equipment Number	T0702
Location	Trinidad
Recorded By	E. Ray
Witnessed By	Steve Dominguez

Borehole Record				Tubing Record			
Bit	From	To	Size	Weight	From	To	

Casing Record	Size	Wgt/Ft	Top	Bottom
Surface String	8 5/8"		00	500'
Prot. String				
Production String	5 1/2"		00	1845'
Liner				

<<< Fold Here >>>

All interpretations are opinions based on inferences from electrical or other measurements and we cannot and do not guarantee the accuracy or correctness of any interpretation, and we shall not, except in the case of gross or willful negligence on our part, be liable or responsible for any loss, costs, damages, or expenses incurred or sustained by anyone resulting from any interpretation made by any of our officers, agents or employees. These interpretations are also subject to our general terms and conditions set out in our current Price Schedule.

Comments

First Bosque entrance, Turn Right up Alamacito Canyon, first right up hill,
dead end on location

Main Pass 1000PSI
Repeat Section 0PSI

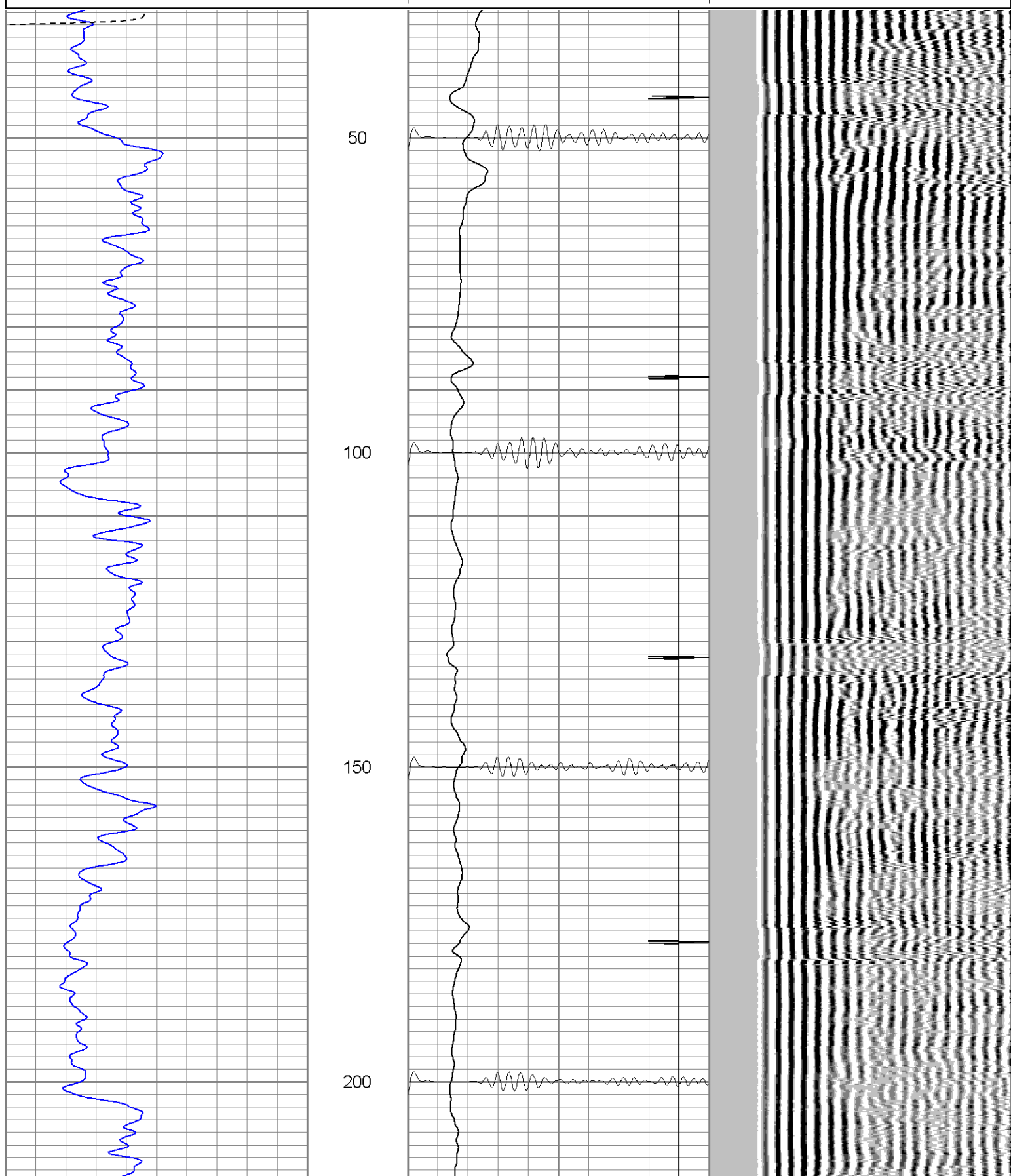


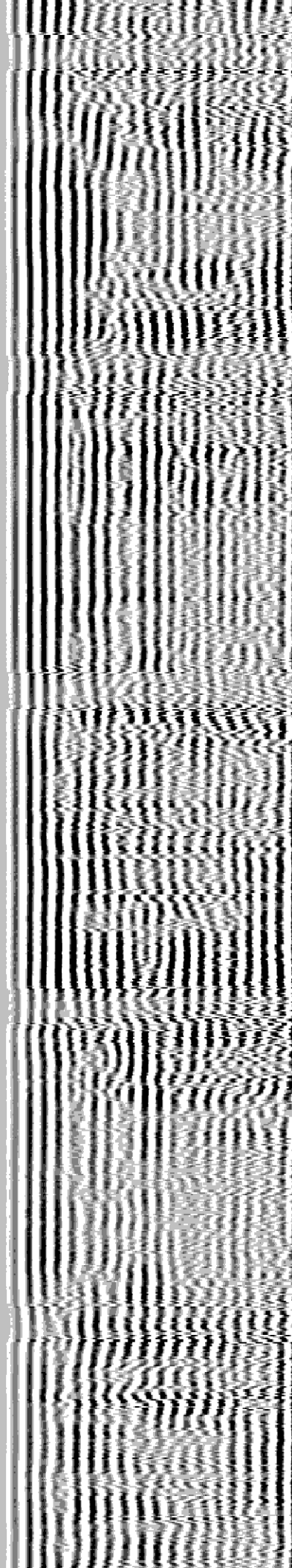
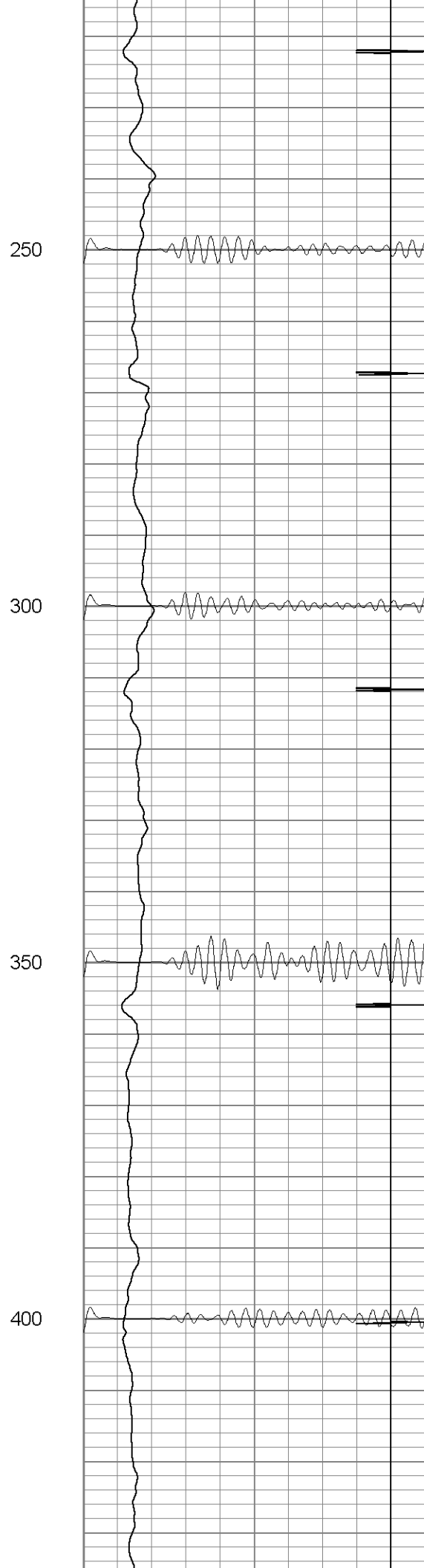
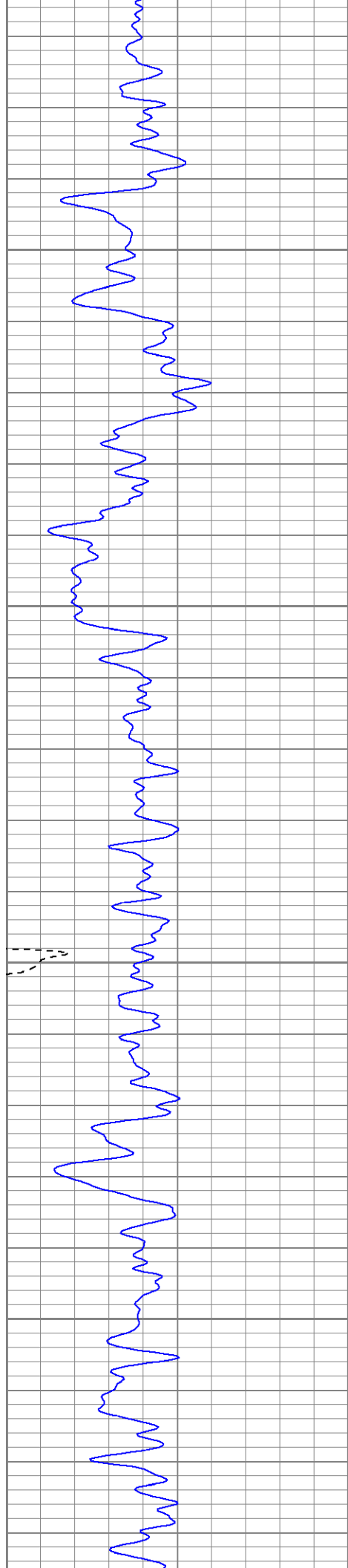
SUPERIOR
Black Lick, Pa.
Mercer, Pa.
Wooster, Oh.
Cleveland, Ok.
Trinidad, Co.

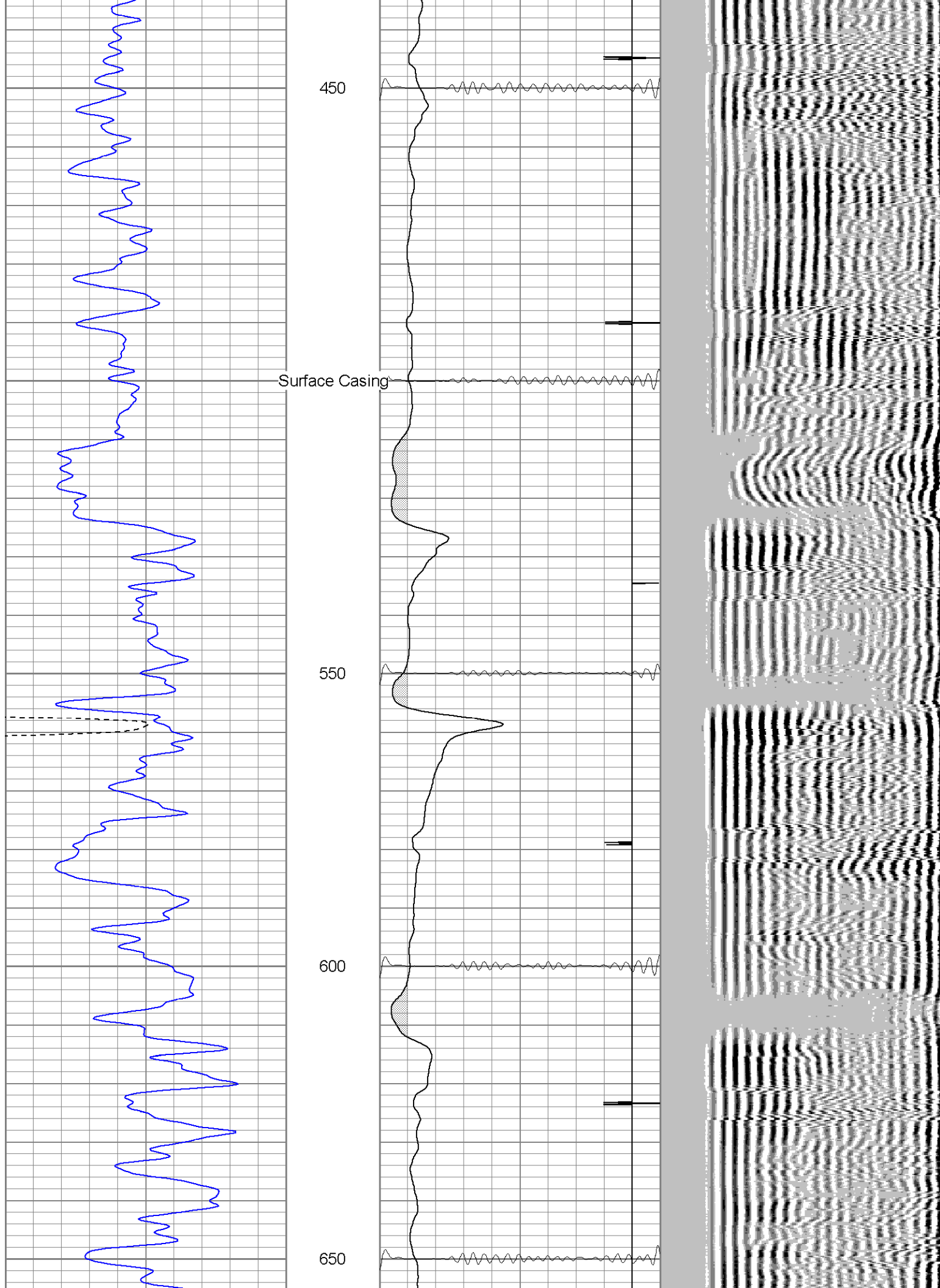
Main Pass (1000PSI)

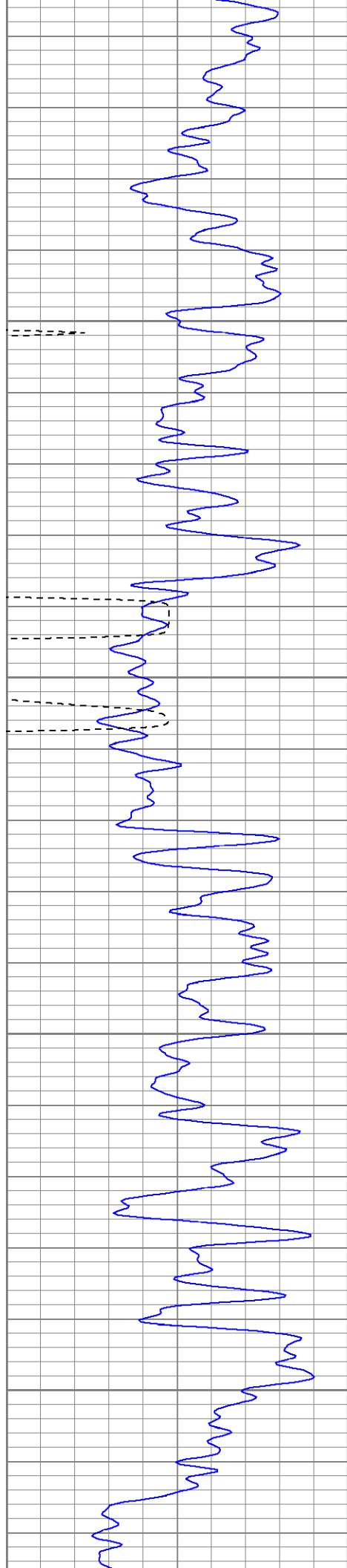
Database File: ac0402082808b.db
Dataset Pathname: pass2
Presentation Format: cblrt
Dataset Creation: Thu Aug 28 14:38:08 2008 by Log Open-Cased 071220
Charted by: Depth in Feet scaled 1:240

0	GR (GAPI)	200	0	AMP3 (mV)	100	200	Variable Density	1200
400	TT3 (usec)	200	18	CCL	-2			
			100	CBL5	1200			







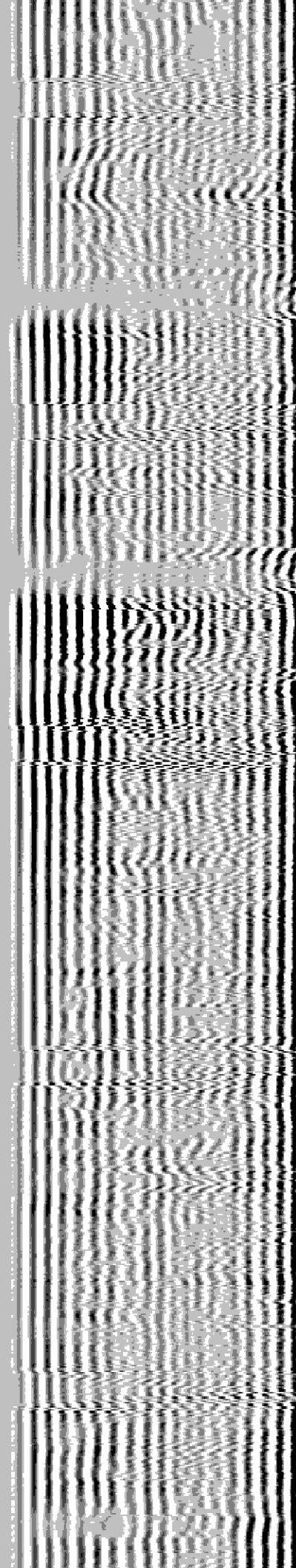
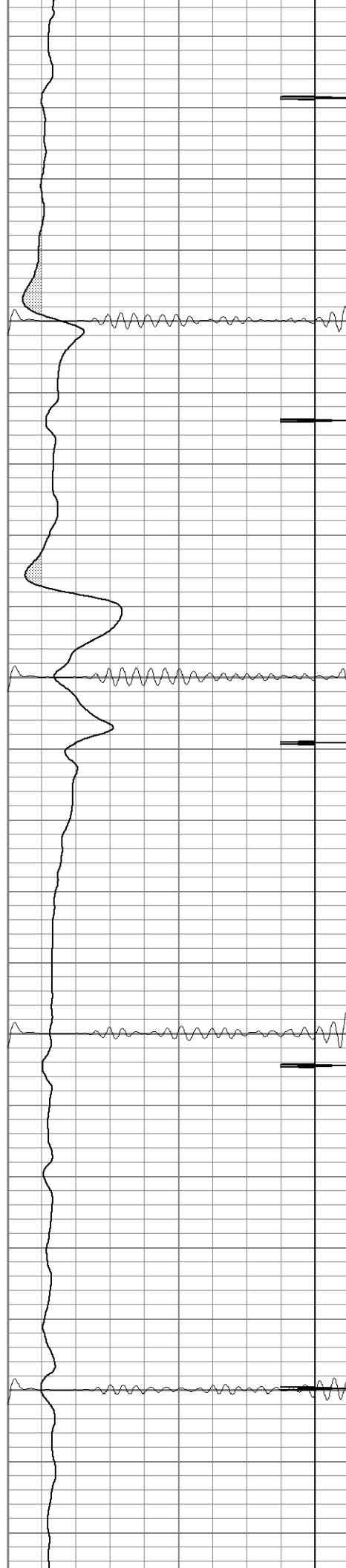


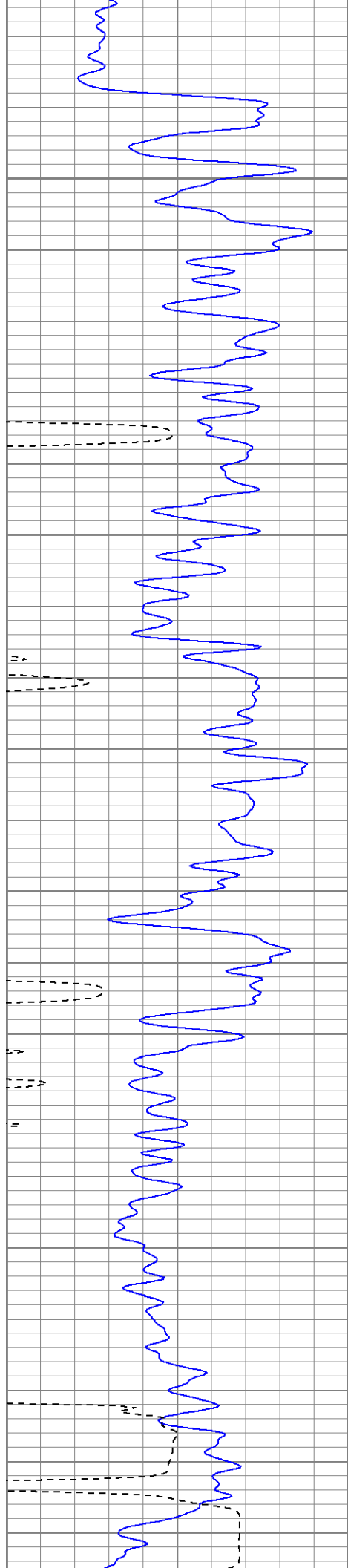
700

750

800

850



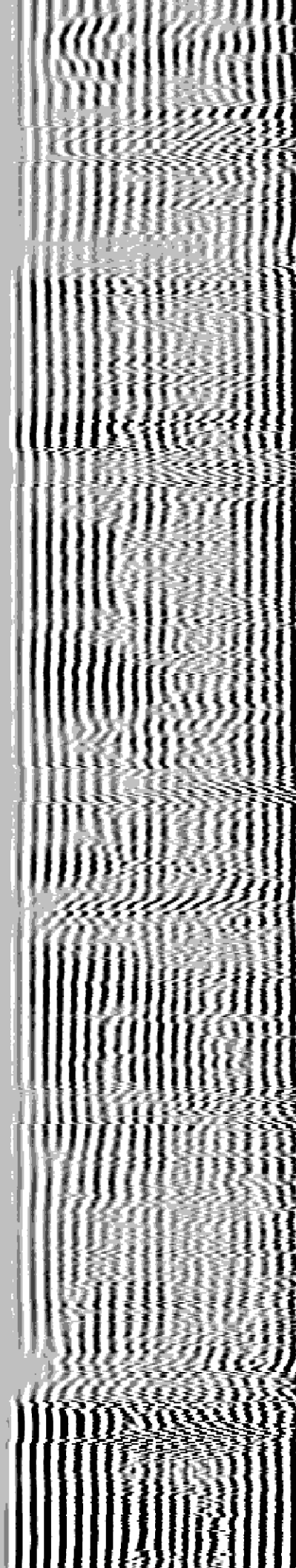
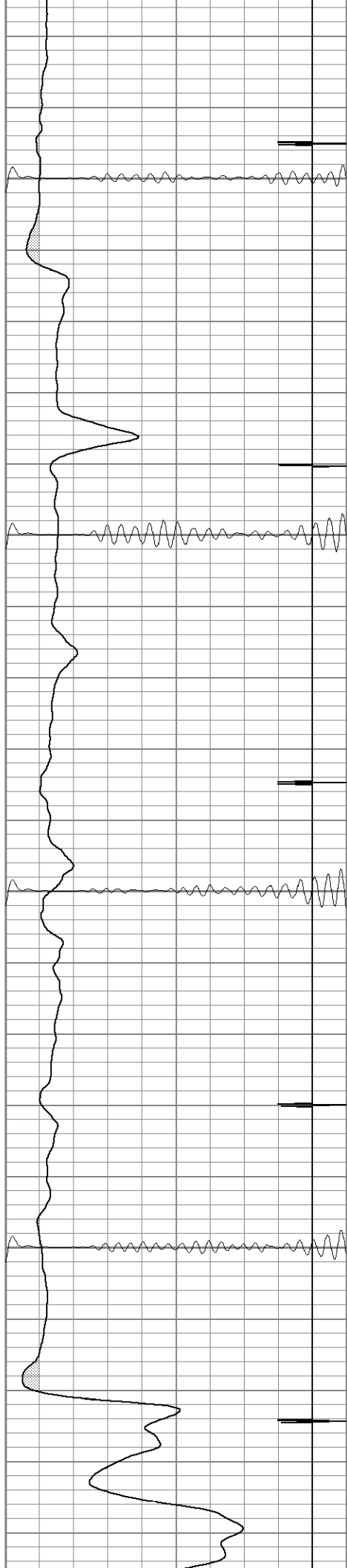


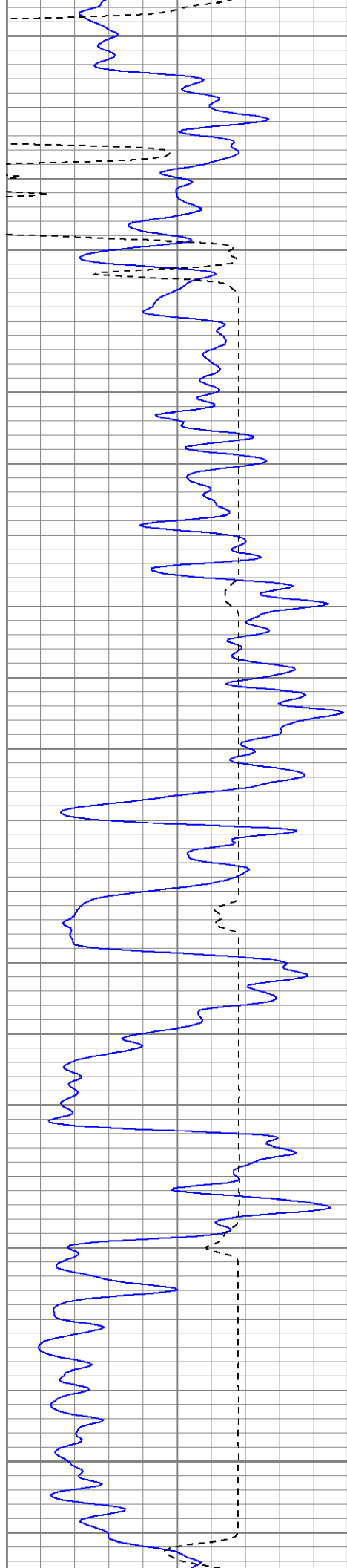
900

950

1000

1050





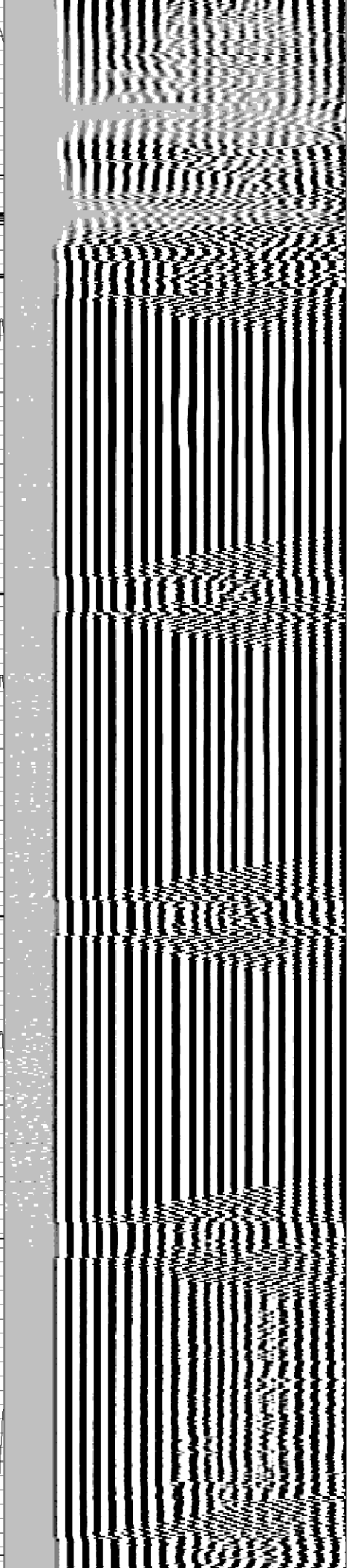
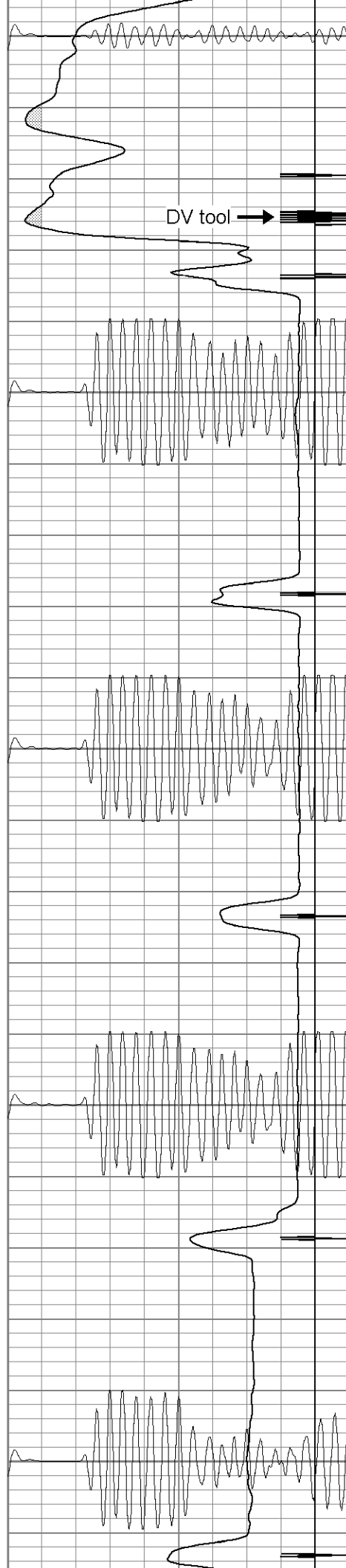
1100

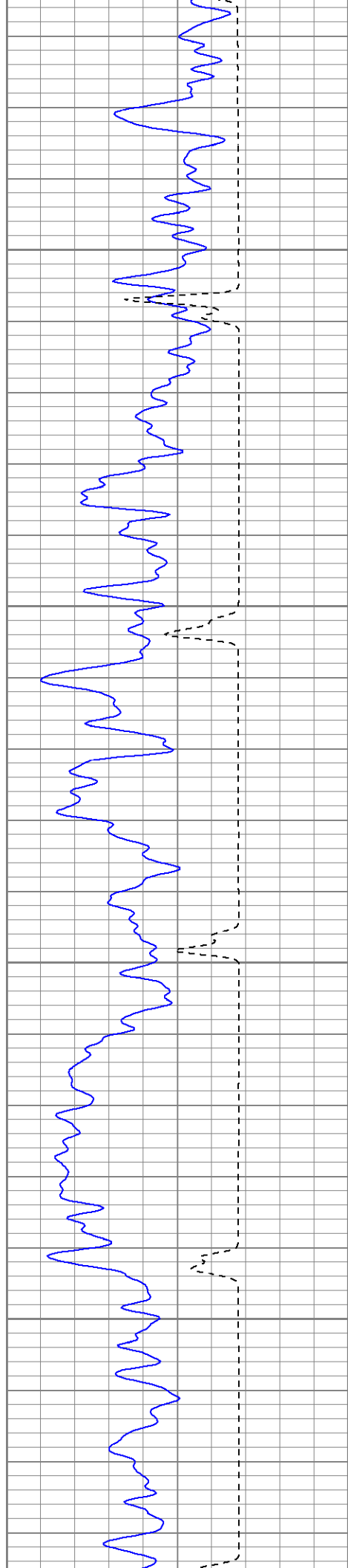
1150

1200

1250

1300



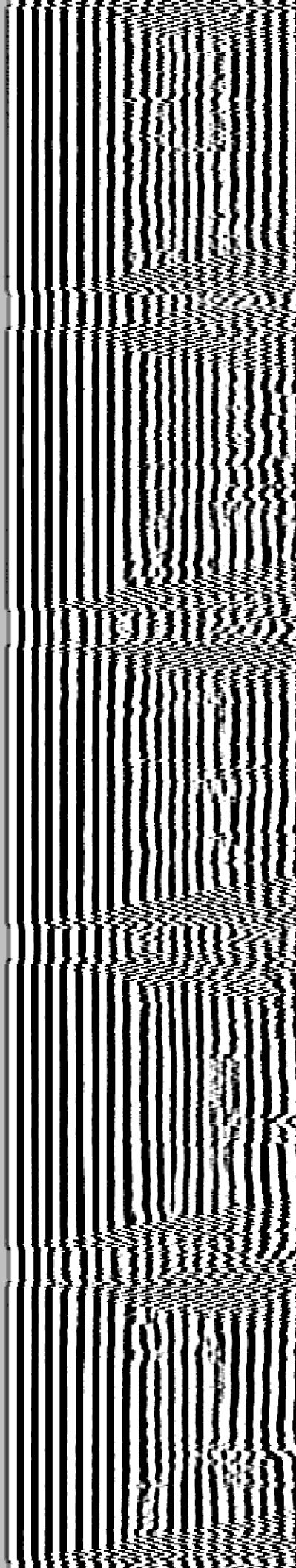


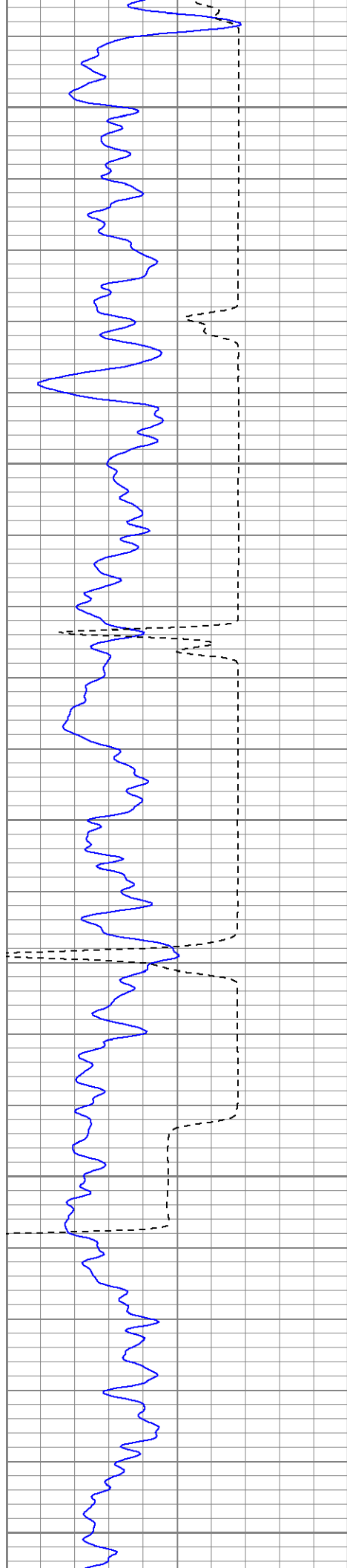
1350

1400

1450

1500





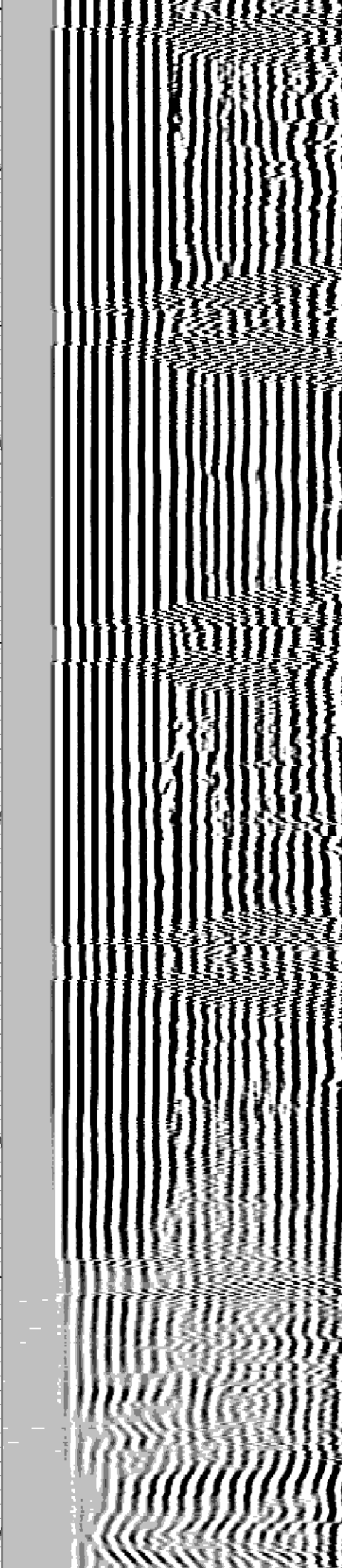
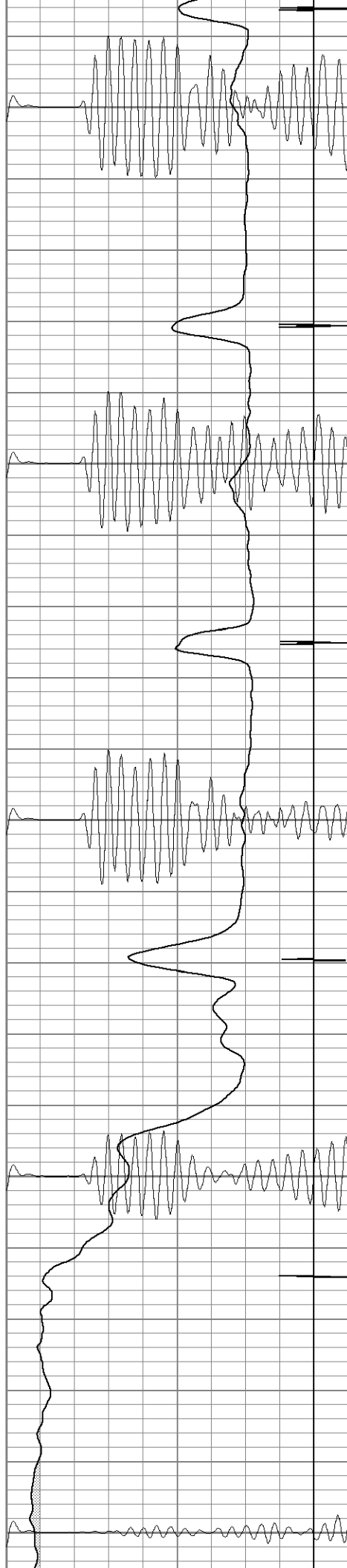
1550

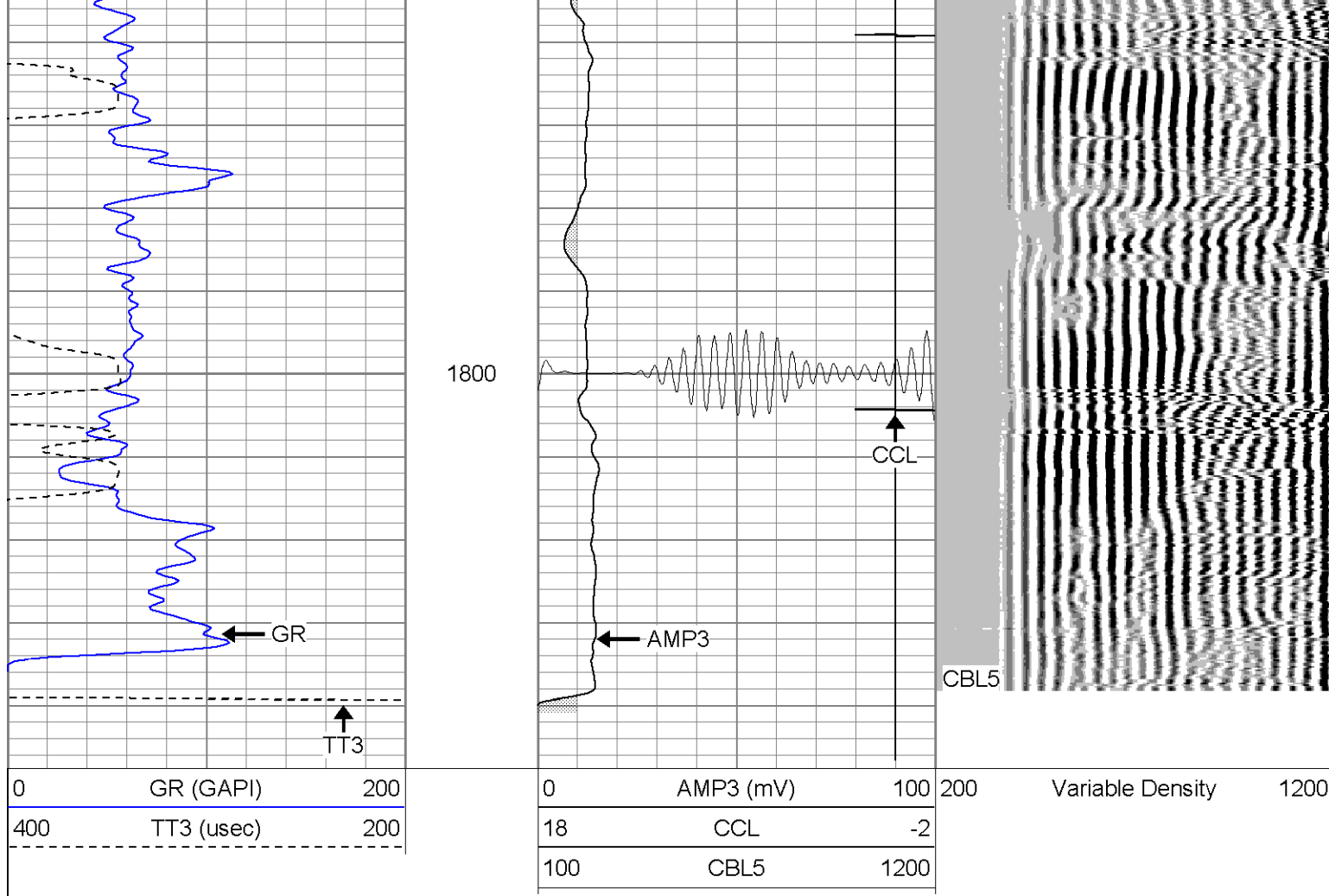
1600

1650

1700

1750



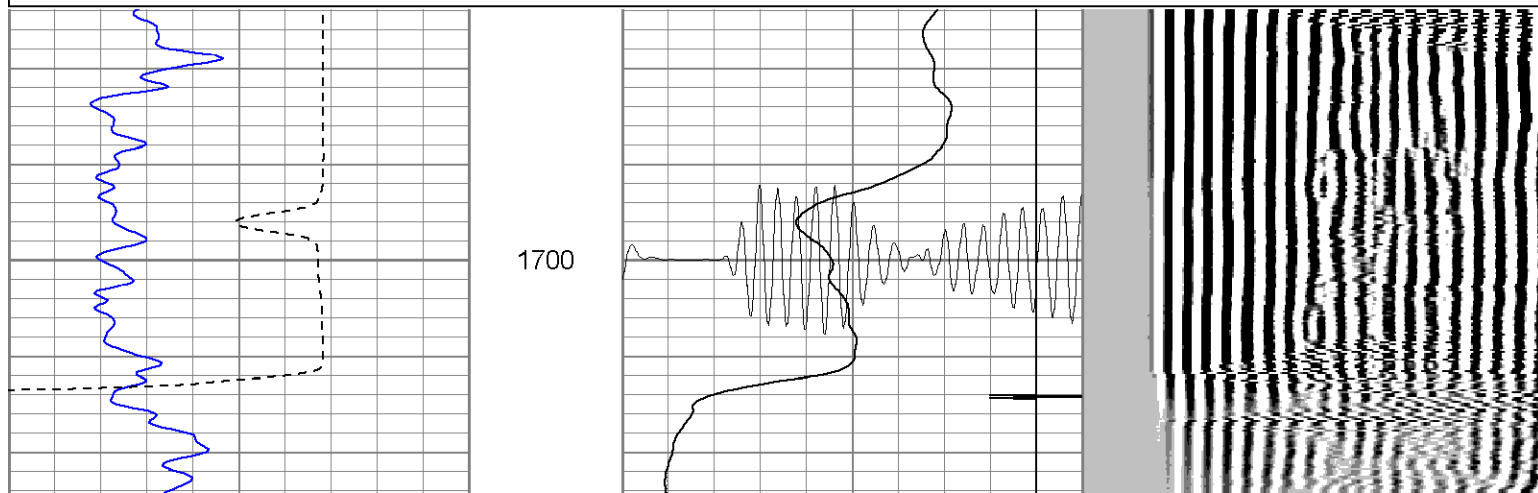
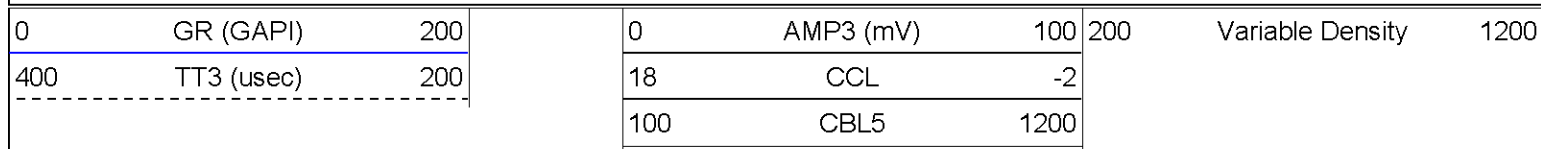


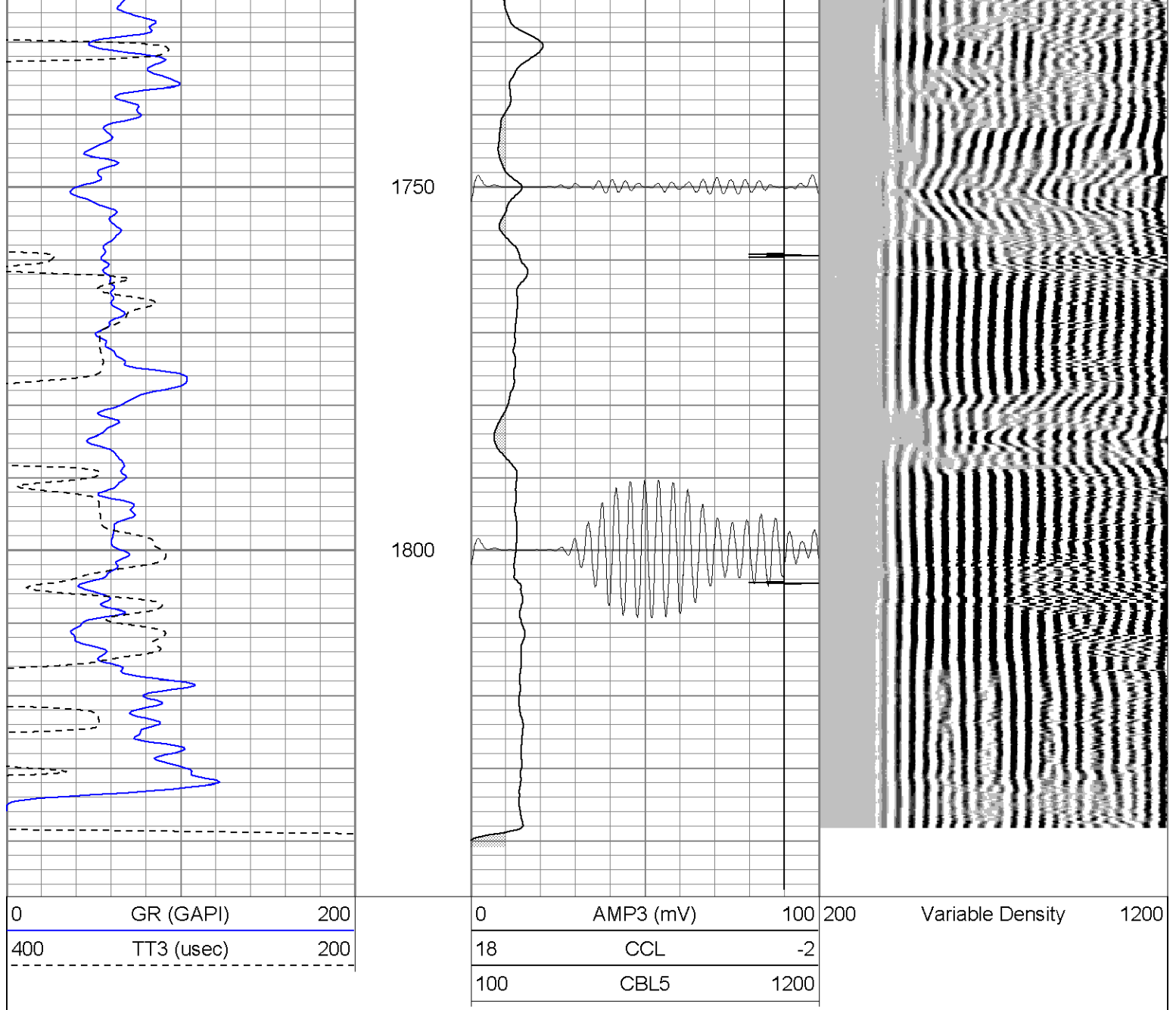
SUPERIOR

Black Lick, Pa.
Mercer, Pa.
Wooster, Oh.
Cleveland, Ok.
Trinidad, Co.

Repeat Section (0PSI)

Database File: ac0402082808b.db
Dataset Pathname: pass1
Presentation Format: cblrt
Dataset Creation: Thu Aug 28 14:30:23 2008 by Log Open-Cased 071220
Charted by: Depth in Feet scaled 1:240





Calibration Report

Database File: ac0402082808b.db
 Dataset Pathname: pass1
 Dataset Creation: Thu Aug 28 14:30:23 2008 by Log Open-Cased 071220

Cement Bond Log Calibration Report

Serial Number:	Titan5		
Tool Model:	T2		
Performed:	Thu Aug 28 14:24:53 2008		
Depth:	44.4662	ft	
Casing Diameter:	5.5	in	
	3' Spacing	5' Spacing	
Signal Zero:	0	0	mV
Calibrated Amplitude:	85	85	mV
Reading at Signal Zero:	0.00925293	0.00957031	V
Reading in Free Pipe:	1.02	2.1204	V
Gain:	84.0962	40.2685	
Offset:	-0.778136	-0.385382	

Gamma Ray Calibration Report

Serial Number: Titan5
 Tool Model: T2
 Performed: Thu Aug 28 14:05:00 2008

 Calibrator Value: 250.0 GAPI

 Background Reading: 40.0 cps
 Calibrator Reading: 220.0 cps

 Sensitivity: 1.1000 GAPI/cps

Sensor	Offset (ft)	Schematic	Description	Len (ft)	OD (in)	Wt (lb)
GR	13.64		GR-T2 (Titan5)	2.52	2.44	25.00
WVF5	9.49		CBL-T2 (Titan5)	7.23	2.25	110.00
WVF3	8.49					
			X	3.00	3.00	25.00
CCL	0.83		CCL-T5 (Titan5) Long	2.15	2.75	15.00
		Dataset: ac0402082808b.db: field/well/run1/pass1 Total Length: 14.91 ft Total Weight: 175.00 lb O.D.: 3.00 in				