



SUPERIOR
WELL SERVICES
Black Lick, Pa.
Mercer, Pa.
Wooster, Oh.
Cleveland, Ok.
Trinidad, Co.

**CEMENT
BOND
LOG
1000 PSI**

Company XTO Energy, Inc.
Well Golden Eagle 32-15
Field Purgatoire River
County Las Animas State CO

Location: API # : 05 071 09631 00

770' FSL & 1766' FEL

SEC 32 TWP 33S RGE 67W

Permanent Datum Ground Level Elevation 7784'
Log Measured From Ground Level
Drilling Measured From Ground Level

Other Services
TEMP
Elevation
K.B. -----
D.F. -----
G.L. 7784'

Date 8-14-08

Run Number	One
Depth Driller	2425'
Depth Logger	2355'
Bottom Logged Interval	2354'
Top Log Interval	Surface
Open Hole Size	7 7/8"
Type Fluid	Water
Density / Viscosity	///
Max. Recorded Temp.	132F
Estimated Cement Top	737'
Time Well Ready	3:15PM
Time Logger on Bottom	3:30PM
Equipment Number	T0702
Location	Trinidad
Recorded By	E. Ray
Witnessed By	Travis Gourdin

Borehole Record				Tubing Record			
Bit	From	To	Size	Weight	From	To	

Casing Record	Size	Wgt/Ft	Top	Bottom
Surface String	8 5/8"		00	499'
Prot. String				
Production String	5 1/2"		00	2428'
Liner				

<<< Fold Here >>>

All interpretations are opinions based on inferences from electrical or other measurements and we cannot and do not guarantee the accuracy or correctness of any interpretation, and we shall not, except in the case of gross or willful negligence on our part, be liable or responsible for any loss, costs, damages, or expenses incurred or sustained by anyone resulting from any interpretation made by any of our officers, agents or employees. These interpretations are also subject to our general terms and conditions set out in our current Price Schedule.

Comments

First Bosque entrance, take right @ Cherry Canyon, Left @ Y, go thru green gate, past Compressor Station 5, stay right @ hard switchback, take 2nd left, @ Y stay left, dead end on location

Main Pass 1000PSI
Repeat Section 0PSI



SUPERIOR
Black Lick, Pa.
Mercer, Pa.
Wooster, Oh.
Cleveland, Ok.
Trinidad, Co.

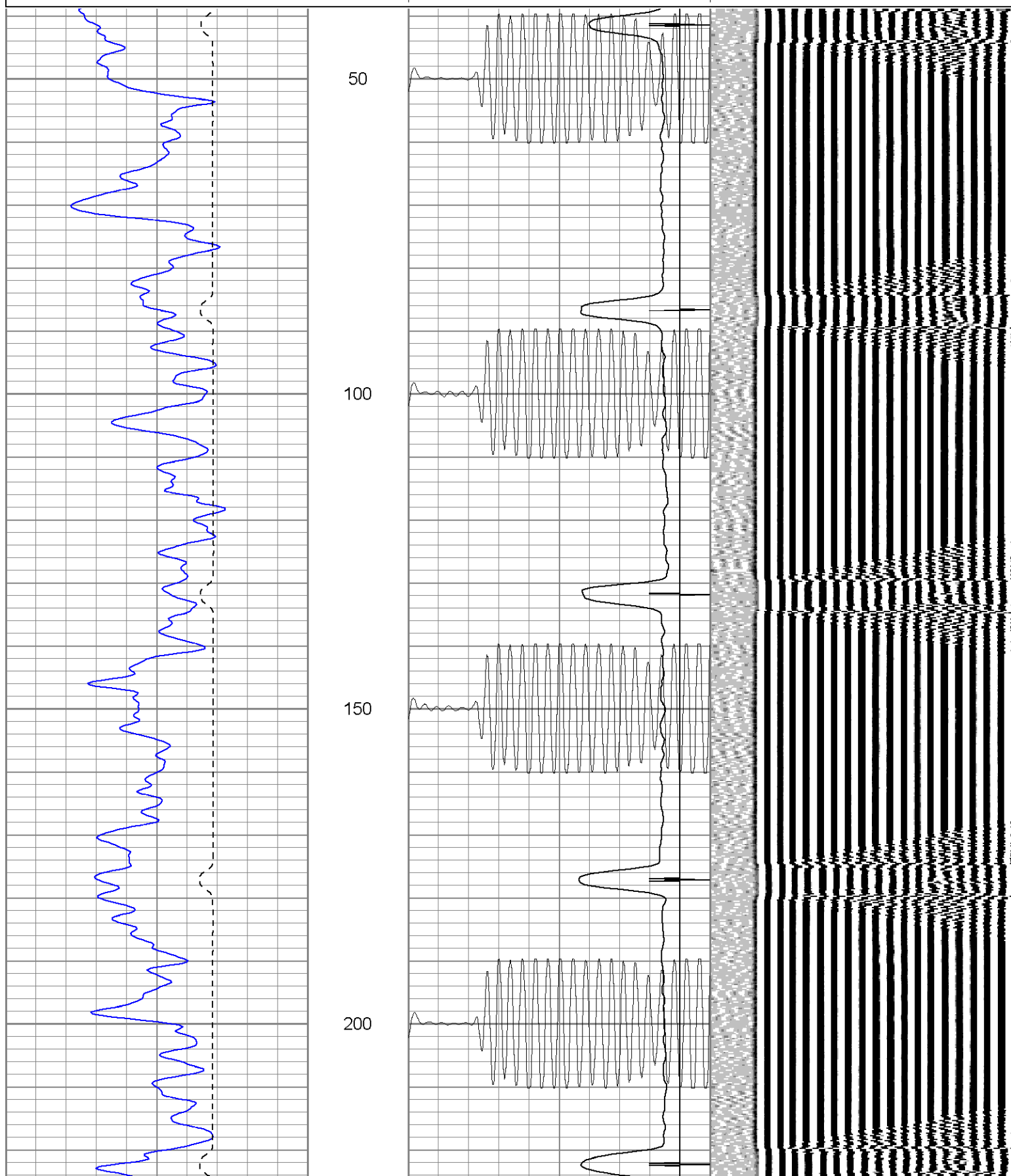
Main Pass (1000PSI)

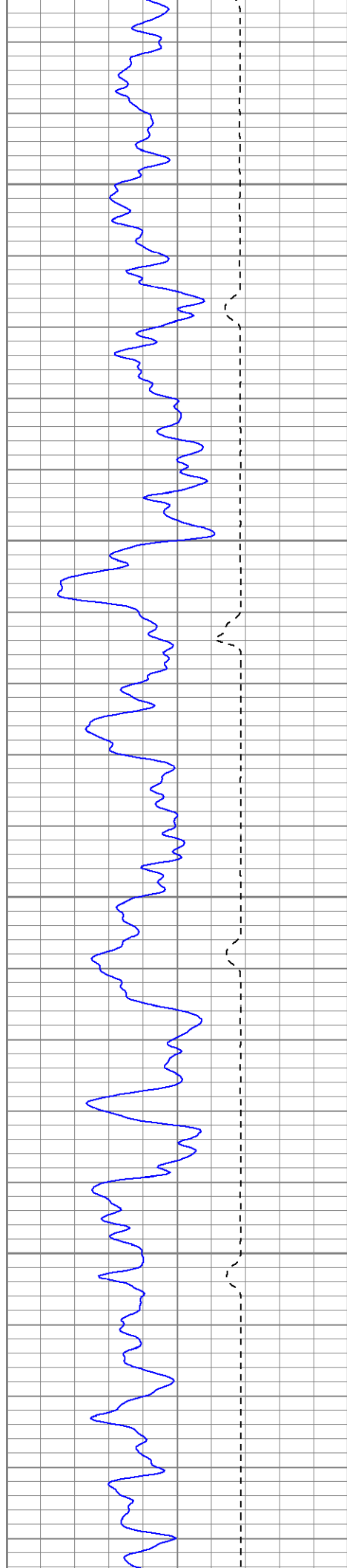
Database File: ge321581408b.db
Dataset Pathname: pass2
Presentation Format: cblrt
Dataset Creation: Thu Aug 14 15:59:22 2008 by Log Std Casedhole 07081
Charted by: Depth in Feet scaled 1:240

0	GR (GAPI)	200
400	TT3 (usec)	200

0	AMP3 (mV)	100
18	CCL	-2
100	CBL5	1200

200	Variable Density	1200
-----	------------------	------



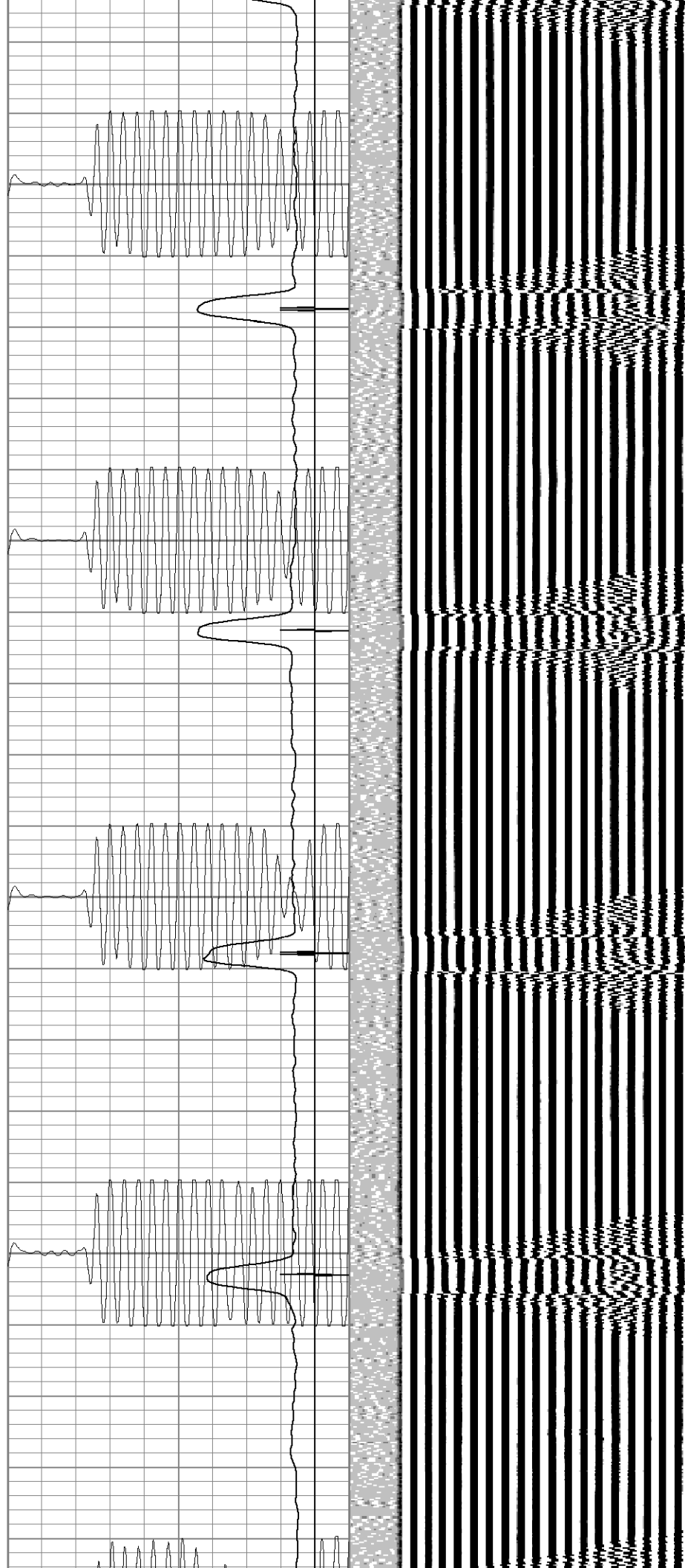


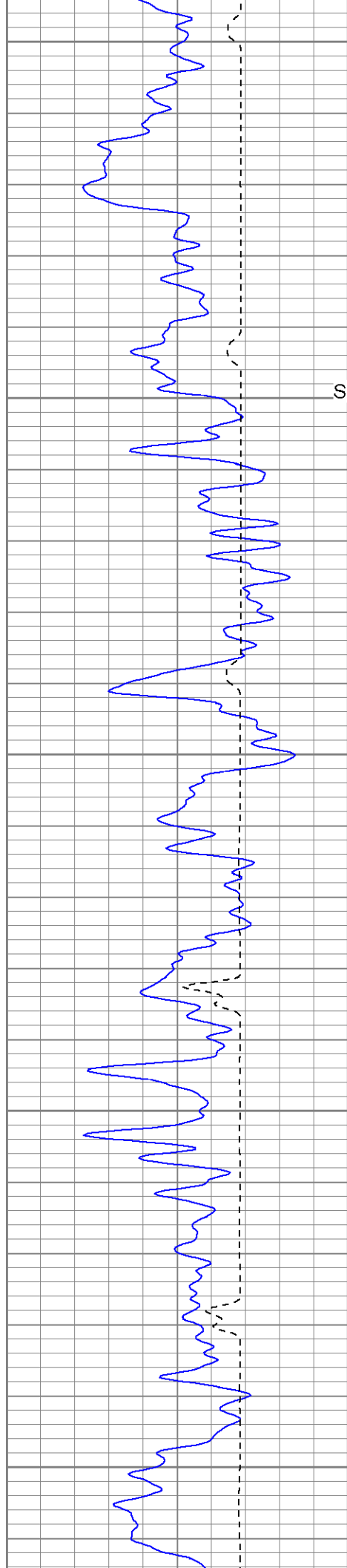
250

300

350

400





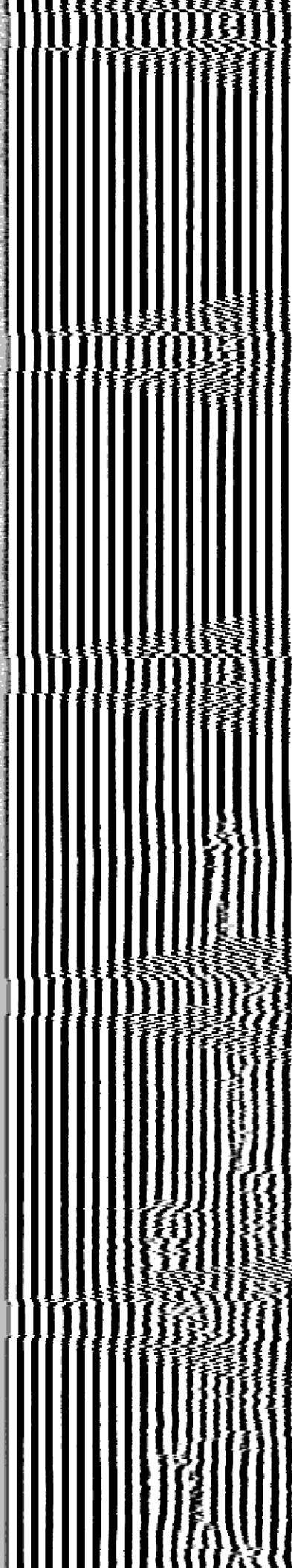
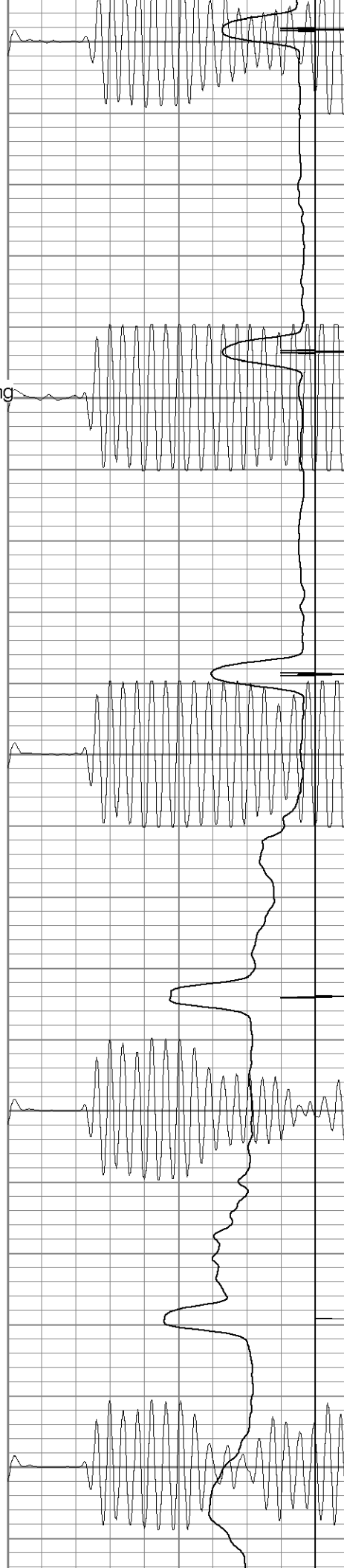
450

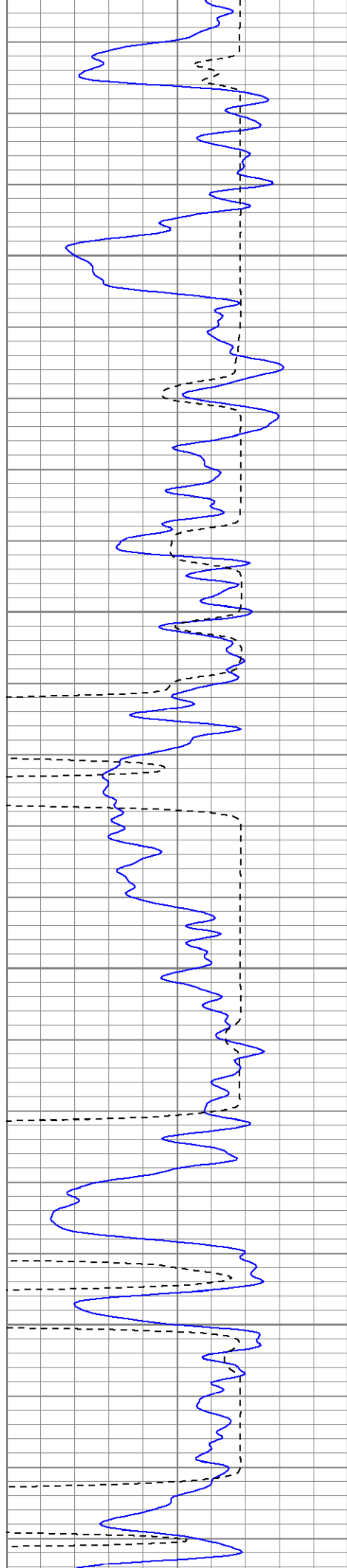
Surface_Casing

550

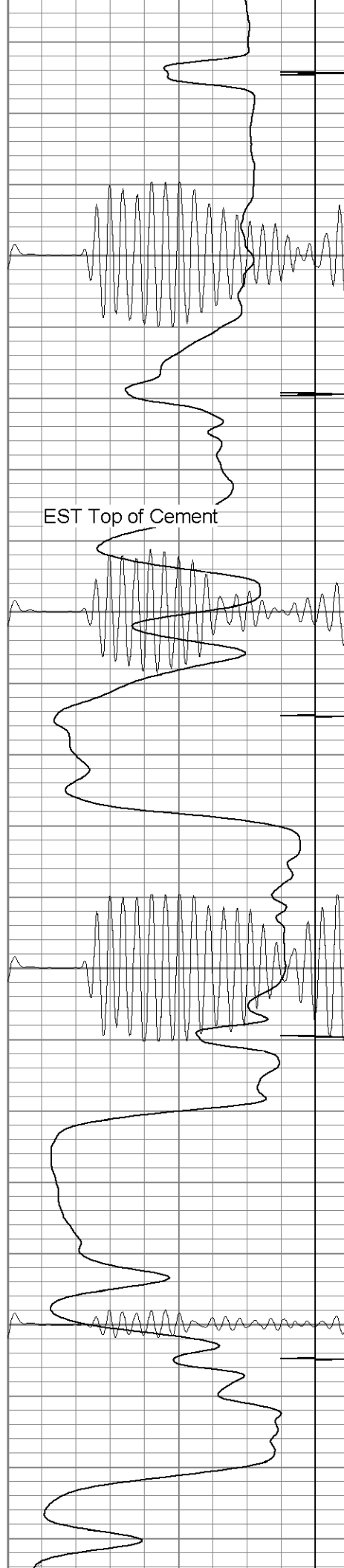
600

650





700

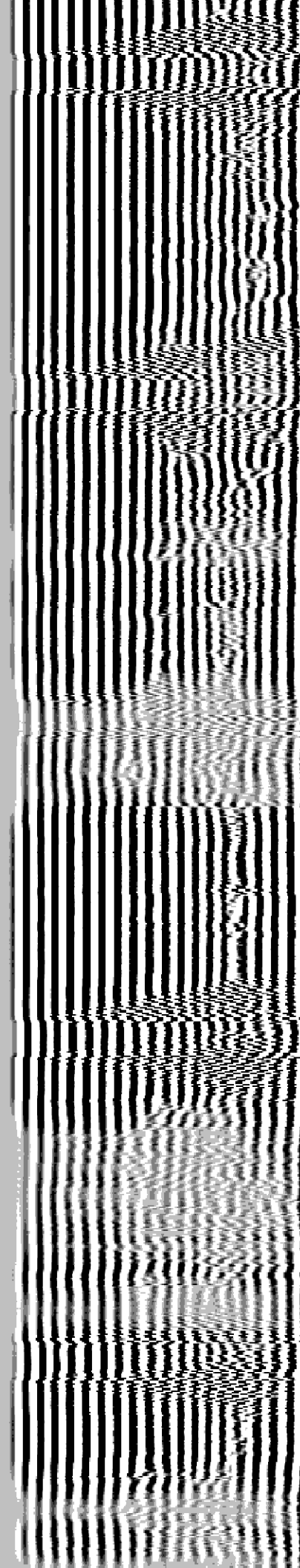


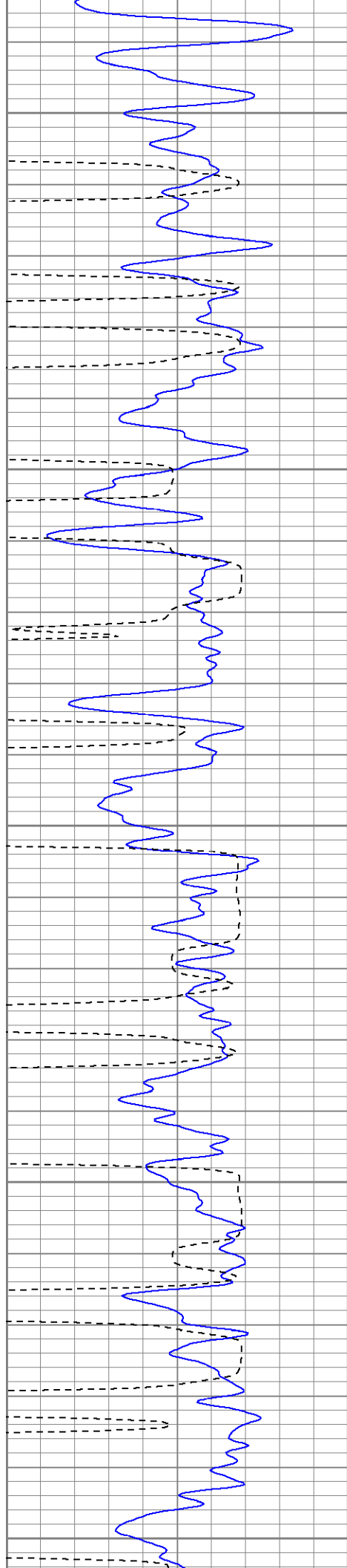
EST Top of Cement

750

800

850





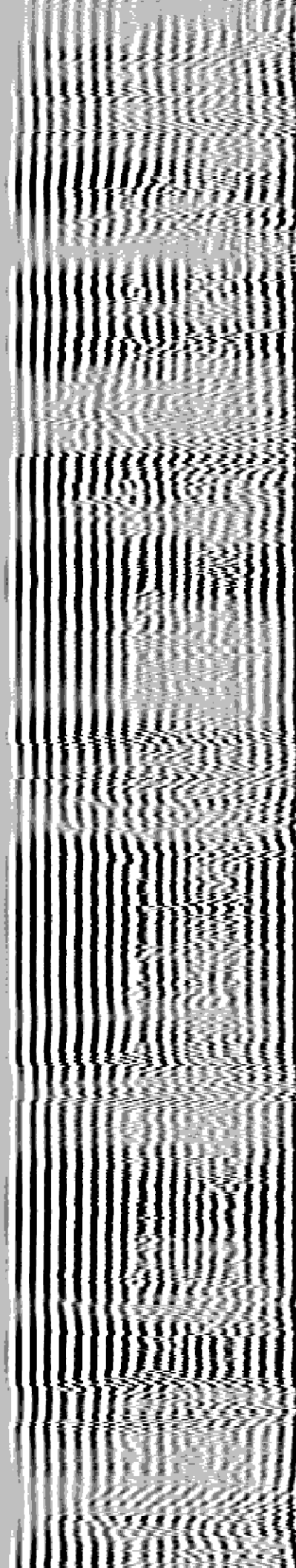
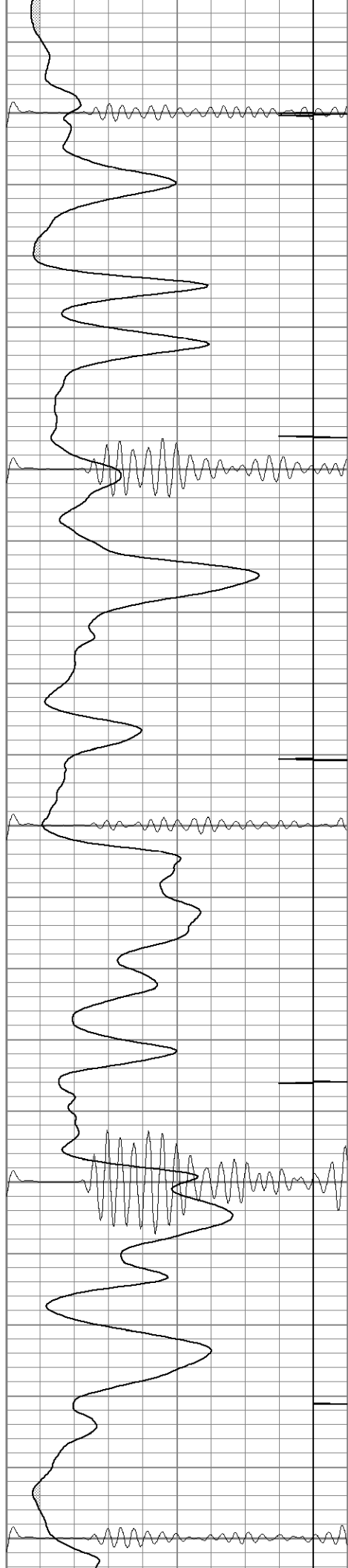
900

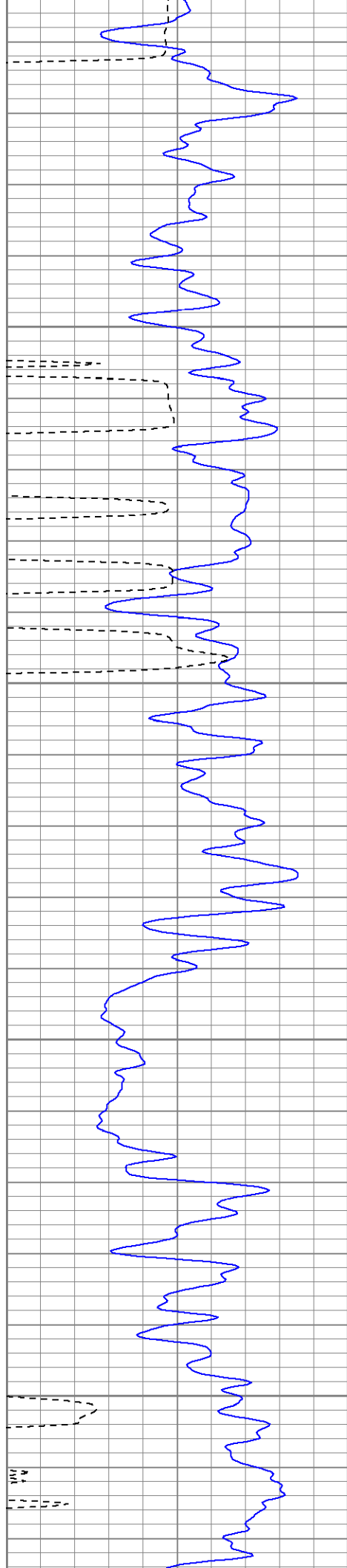
950

1000

1050

1100



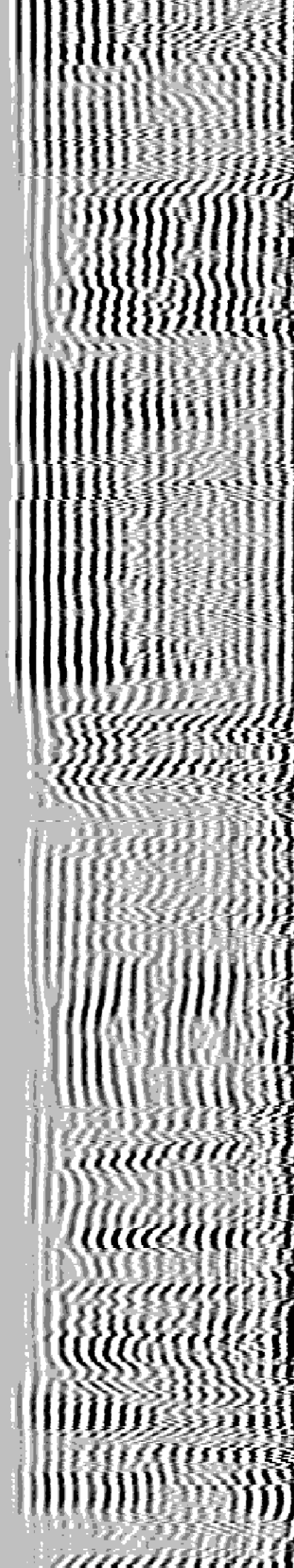
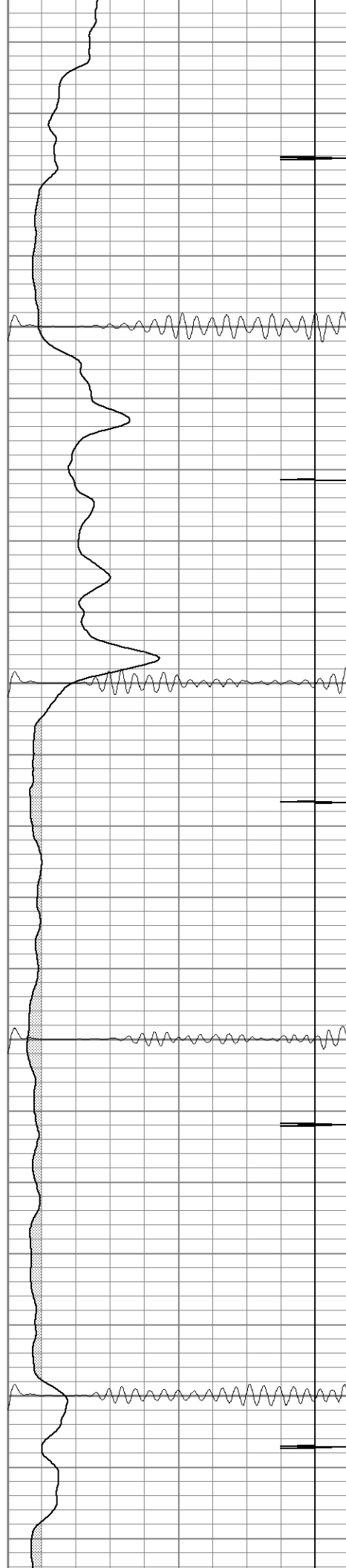


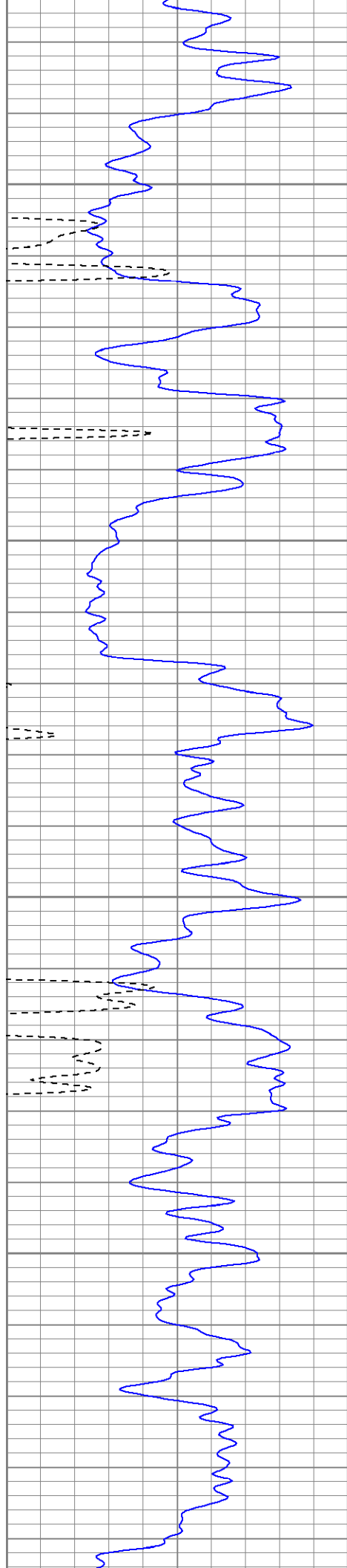
1150

1200

1250

1300



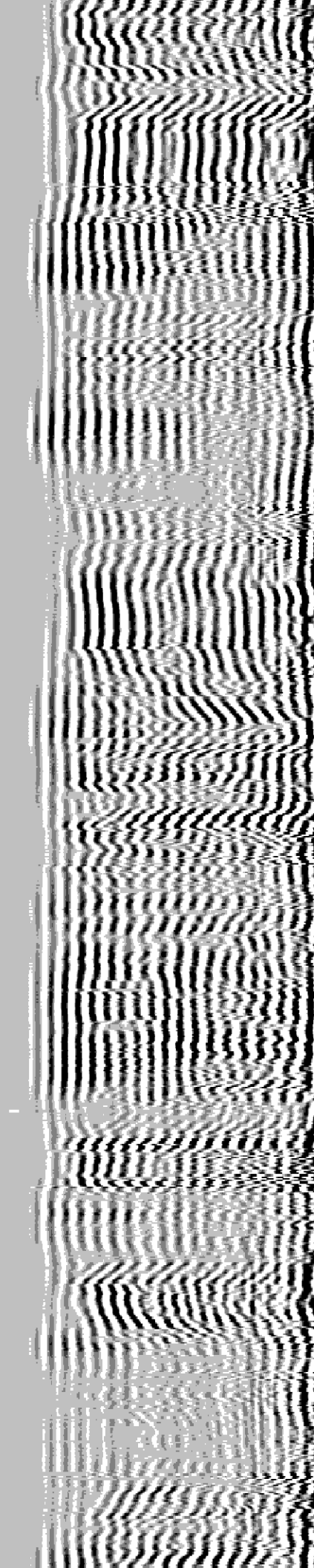
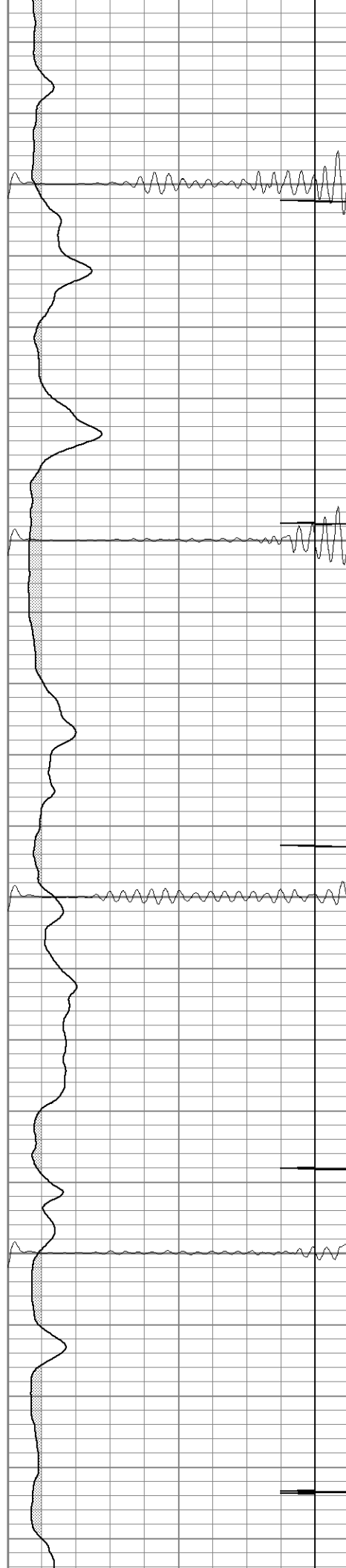


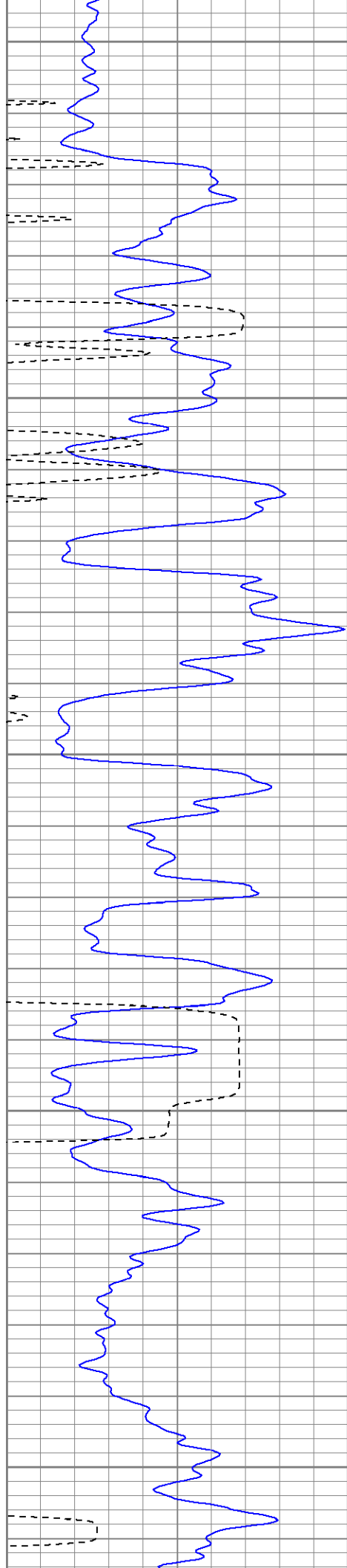
1350

1400

1450

1500





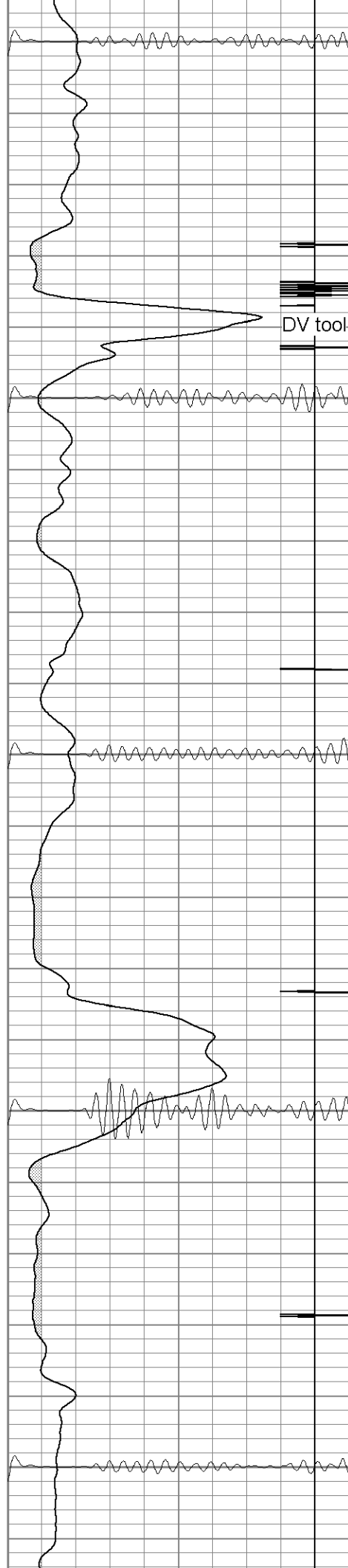
1550

1600

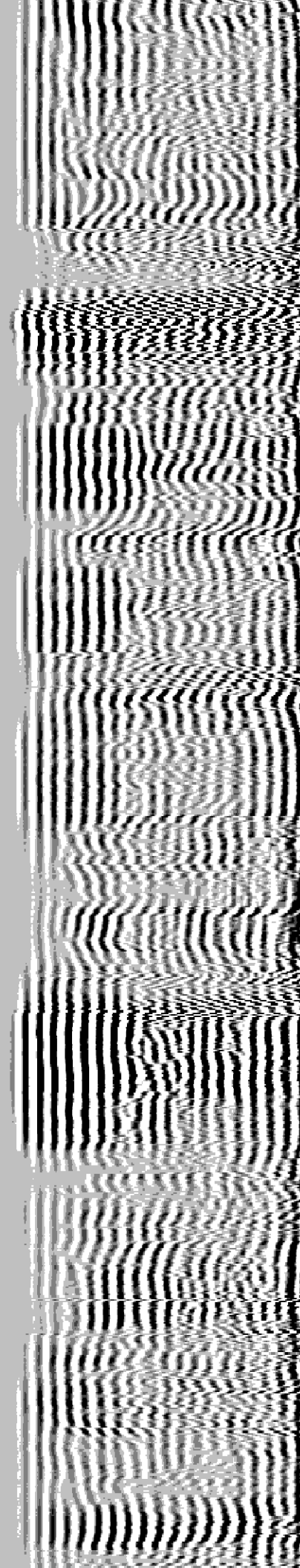
1650

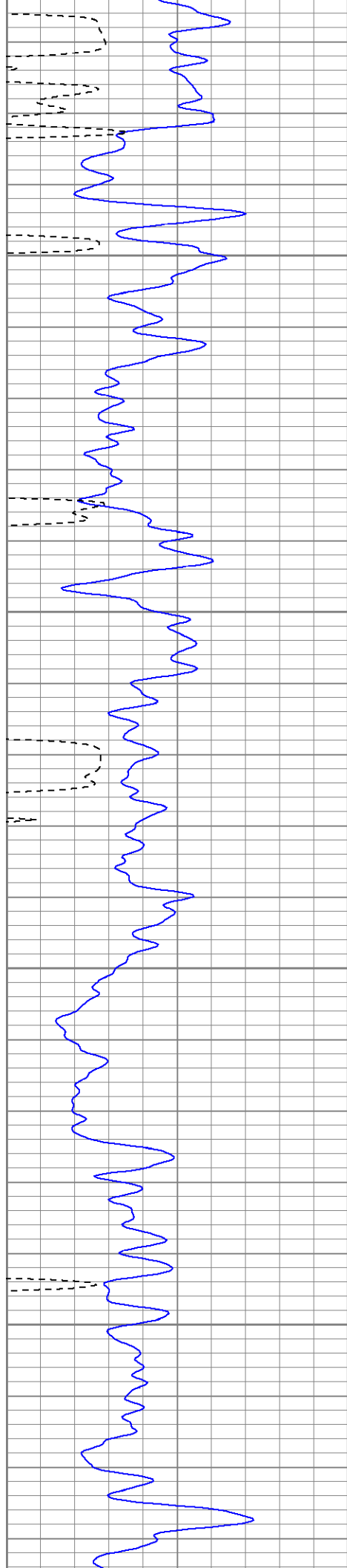
1700

1750



DV tool



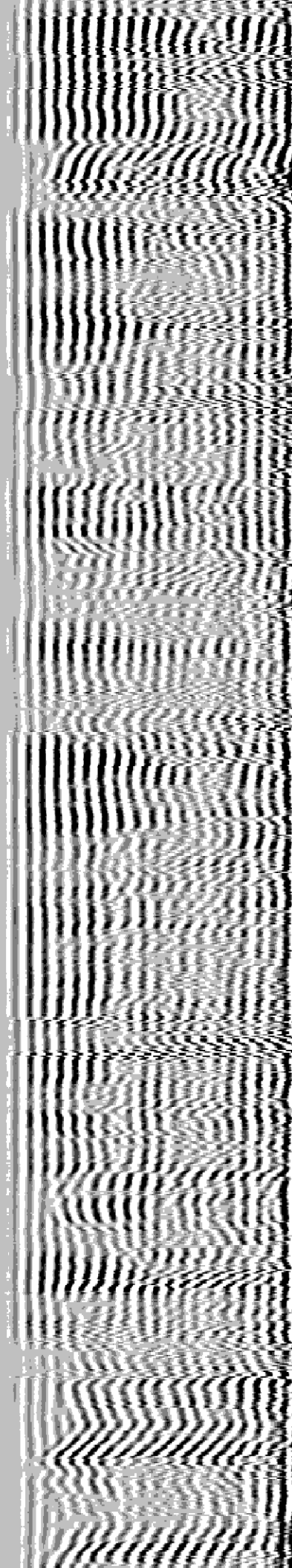
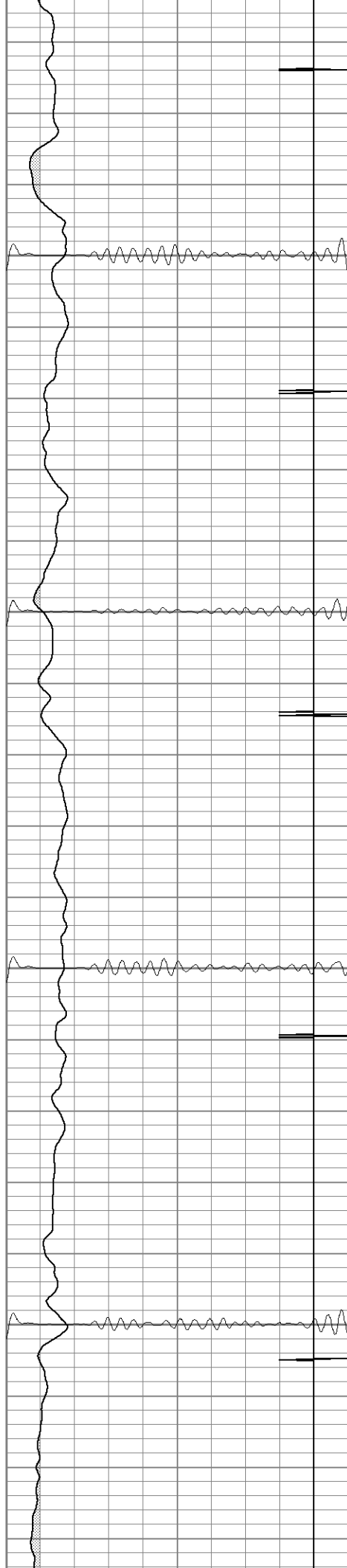


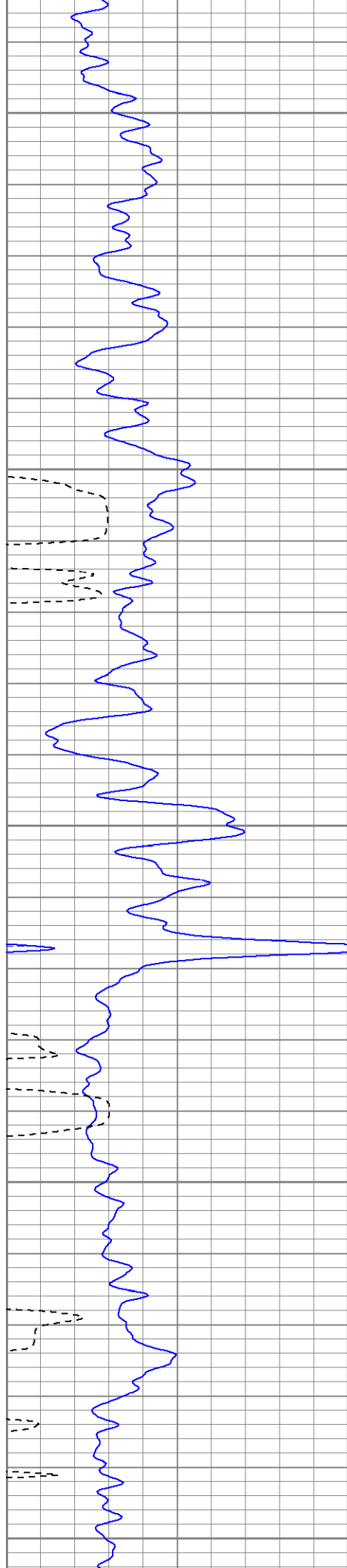
1800

1850

1900

1950





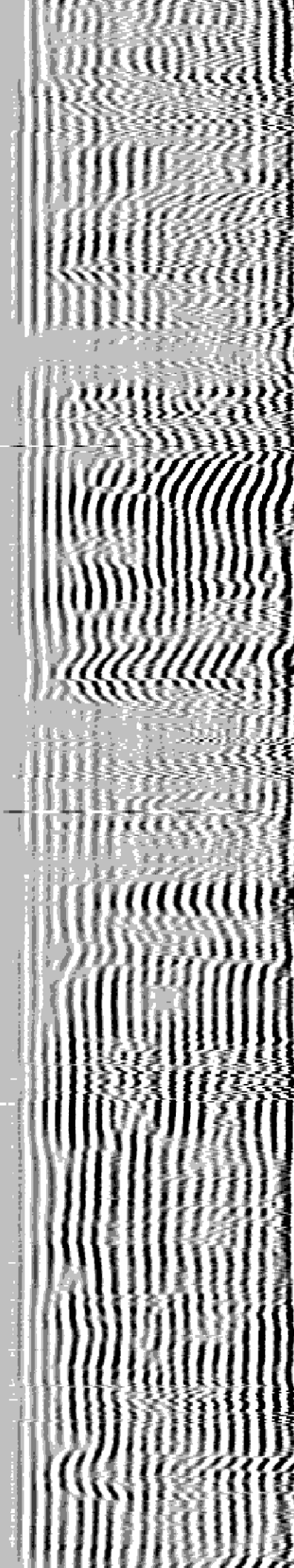
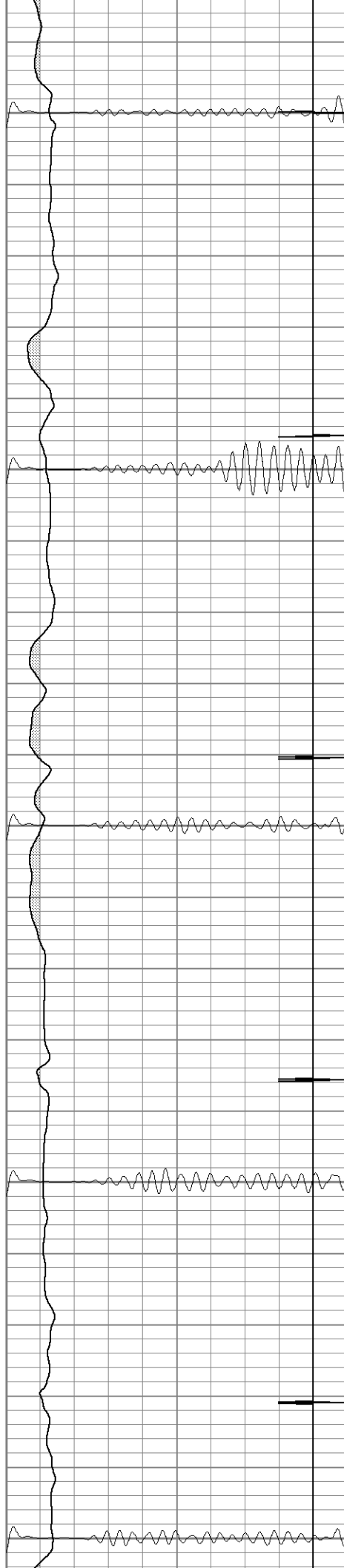
2000

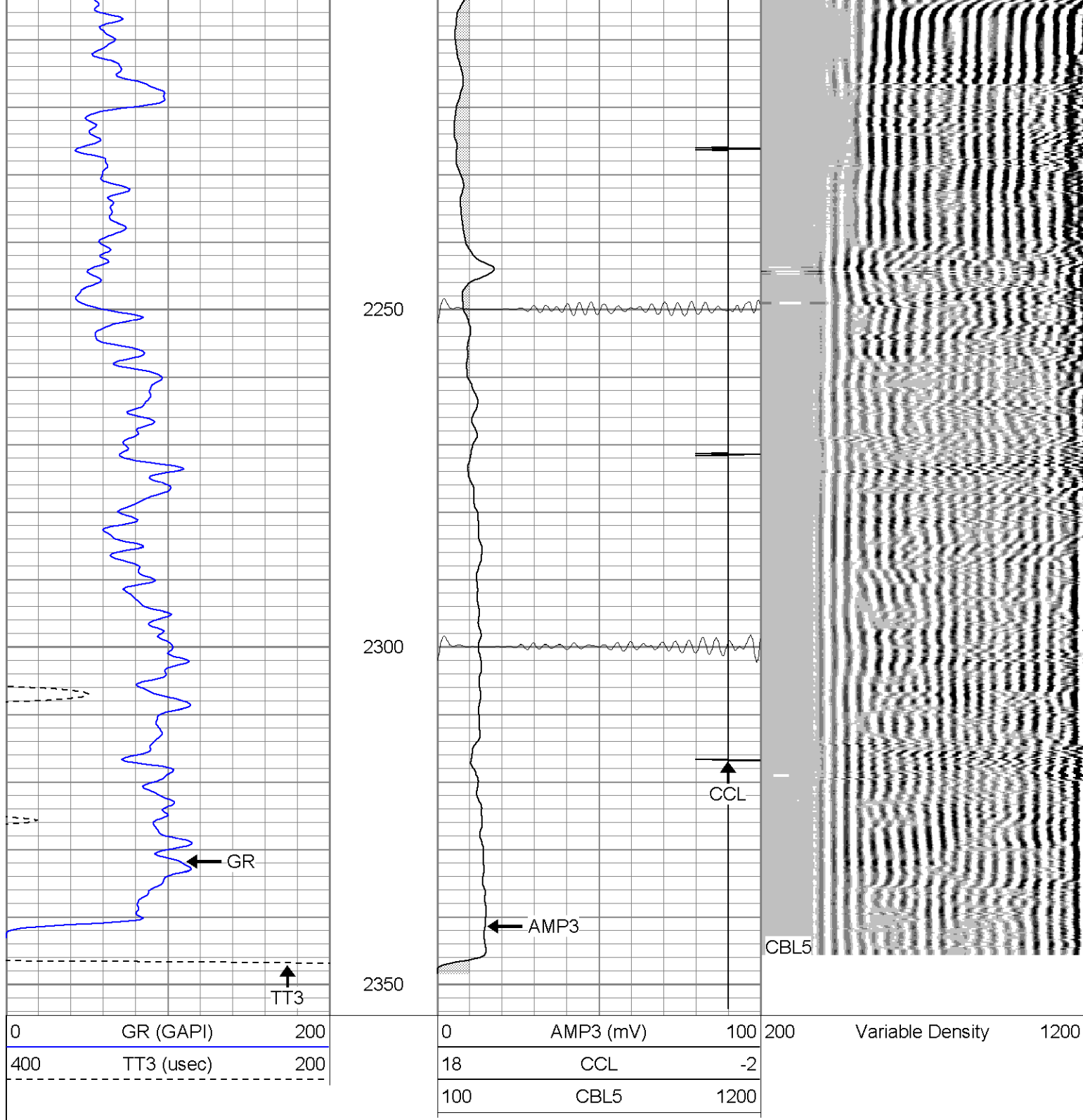
2050

2100

2150

2200





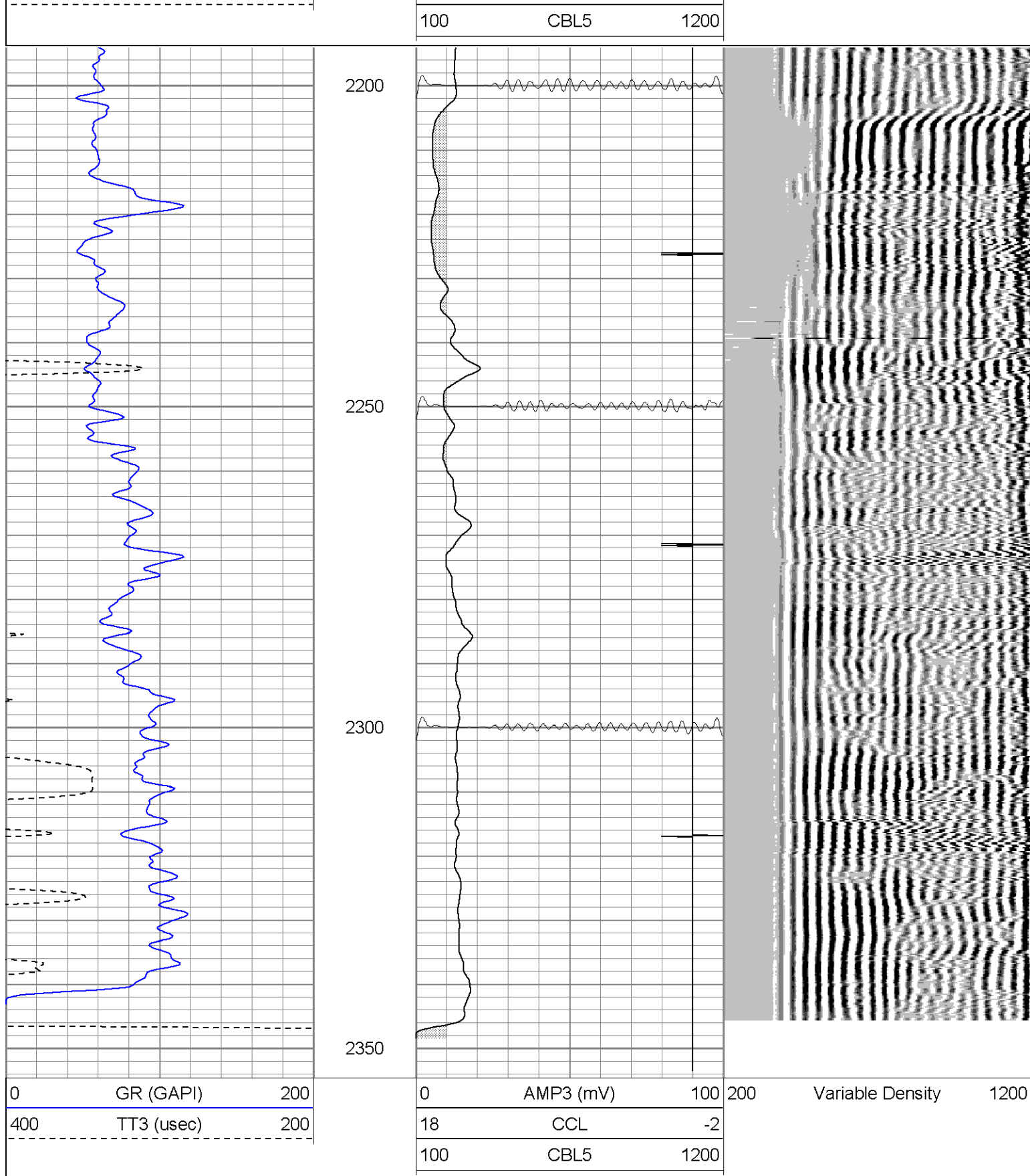
SUPERIOR

Black Lick, Pa.
Mercer, Pa.
Wooster, Oh.
Cleveland, Ok.
Trinidad, Co.

Repeat Section (0PSI)

Database File: ge321581408b.db
Dataset Pathname: pass1
Presentation Format: cblrt
Dataset Creation: Thu Aug 14 15:52:21 2008 by Log Std Casedhole 07081
Charted by: Depth in Feet scaled 1:240

0	GR (GAPI)	200	0	AMP3 (mV)	100	200	Variable Density	1200
400	TT3 (usec)	200	18	CCL	-2			



Calibration Report

Database File: ge321581408b.db
Dataset Pathname: pass1
Dataset Creation: Thu Aug 14 15:52:21 2008 by Log Std Casedhole 07081

Cement Bond Log Calibration Report

Serial Number: Titan5
Tool Model: T2

Thu Aug 14 15:41:45 2008

0	ft
0	in

5' Spacing

0	0	mV
85	85	mV
0	0.008	V
0.97	2.06	V

87.6289	41.423
0	-0.331384

Gamma Ray Calibration Report

Titan5
T2
Thu Aug 14 14:37:59 2008

250.0 GAPI

40.0 cps
220.0 cps

1.1000 GAPI/cps

Sensor	Offset (ft)	Schematic	Description	Len (ft)	OD (in)	Wt (lb)
GR	13.13		GR-T2 (Titan5)	2.52	2.44	25.00
WVF5	8.98		CBL-T2 (Titan5)	7.23	2.25	110.00
WVF3	7.98					
			C	2.49	1.83	2.00
			Longer Production CENT			
CCL	0.83		CCL-T5 (Titan5) Long	2.15	2.75	15.00

Dataset:	ge321581408b.db: field/well/run1/pass1
Total Length:	14.40 ft
Total Weight:	152.00 lb
O.D.	2.75 in